

Proceedings of the Iowa Academy of Science

Volume 30 | Annual Issue

Article 56

1923

Cuscuta in Iowa

G. L. Wittrock
Grinnel College

Copyright ©1923 Iowa Academy of Science, Inc.

Follow this and additional works at: <https://scholarworks.uni.edu/pias>

Recommended Citation

Wittrock, G. L. (1923) "Cuscuta in Iowa," *Proceedings of the Iowa Academy of Science*, 30(1), 351-354.
Available at: <https://scholarworks.uni.edu/pias/vol30/iss1/56>

This Research is brought to you for free and open access by the Iowa Academy of Science at UNI ScholarWorks. It has been accepted for inclusion in Proceedings of the Iowa Academy of Science by an authorized editor of UNI ScholarWorks. For more information, please contact scholarworks@uni.edu.

352 IOWA ACADEMY OF SCIENCE Vol. XXX, 1923

- C. californica* var. *breviflora* Bingham, Utah (Marcus E. Jones, 1880, No. 1875) Cited by Yuncker.
C. subinclusa Sonoma county, Calif. (F. W. Johnson, 1890).
C. americana St. Thomas, W. Indies (Baron von Eggers, 1876).
C. suaveolens Europe.

IOWA SPECIMENS OF THE AMES HERBARIUM SEEN BY
 YUNCKER

- C. cephalanthi* McGregor (Ada Hayden); Little Rock (L. H. Pammel); Decorah county (J. P. Anderson); N. E. Iowa (H. Goddard); Worth county (L. H. Pammel).
 Cited by Yuncker: Fayette county; Ames; Vinton.
C. coryli Fayette county (B. Fink); Fairfield; Decatur county (J. P. Anderson); Ames (L. H. Pammel); Lipton (E. L. Kirkpatrick); Lake Mills (L. H. Pammel).
 Cited by Yuncker: Decatur county.
C. cuspidata Cited by Yuncker: Muscatine county.
C. curta Estherville (L. H. Pammel); Decorah (L. H. Pammel).
C. epithymum Glencoe (T. D. Crane); Ames (L. H. Pammel); Dow City (E. L. Thomas).
C. glomerata Decorah; Des Moines (L. H. Pammel); Manson (C. W. Hyde); Decatur county (J. P. Anderson); McGregor (L. H. Pammel); Wapello (H. P. Kelly); Winneshiek county (H. Goddard).
 Cited by Yuncker: Decatur, Ames, Spirit Lake.
C. gronovii Ames; N. E. Iowa (H. Goddard); Emmet county; Postville (O. Schultz).
C. pentagona var. *typica* Creston (A. Lee Smith); Madison county (M. Nellis); Earlham (M. Nellis); Ames (J. R. Campbell).
 Cited by Yuncker: Ames.
C. pentagona var. *calycina* Dallas Center (H. E. Codlin).
C. polygonorum Lake Mills (L. H. Pammel); Emmet county (R. I. Cratty); Audubon county (L. H. Pammel); High Lake.

SPECIES WHOSE RANGE, ACCORDING TO YUNCKER, WOULD
 PERMIT IT TO BE FOUND IN IOWA
 IN IOWA

C. indecora.

KEY TO SPECIES

- | | |
|--|---------------------|
| Stigma linear, elongated | <i>C. epithymum</i> |
| Stigma capitate; knoblike | 1. |
| 1. No bracts at base of calyx | 2. |
| 1. 2-5 bracts at base of calyx | 5. |
| 2. Fls. mostly smooth, not fleshy or papillate | 3. |
| 2. Fls. fleshy, cells lens-shaped; corolla tips inflexed | 6. |

- | | |
|---|-----------------------|
| 3. Corolla remaining at base of capsule | 4. |
| 3. Corolla carried at apex of capsule | <i>C. cephalanthi</i> |
| 3. Corolla surrounding capsule | <i>C. gronovii</i> |
| 4. Corolla lobes triangular, nearly as long as corolla; rudimentary scales below stamens hardly developed | <i>C. polygonorum</i> |
| 4. Corolla lobes acute, shorter than corolla, sometimes reflexed; scales prominent | <i>C. pentagona</i> |
| 5. Fls. in dense clusters; sessile; 5 large coarse bracts | <i>C. glomerata</i> |
| 5. Fls. in loosely paniculate clusters; sepals serrated | <i>C. cuspidata</i> |
| 6. Fls. mostly tetramerous; scales rudimentary | <i>C. coryli</i> |
| 6. Fls. mostly pentamerous; scales prominent | <i>C. indecora</i> |

VARIATIONS OF *C. PENTAGONA* AND *C. GRONOVII*

- | | |
|--|-----------|
| <i>C. pentagona</i> | |
| Calyx lobes overlapping; fls. small | typica |
| Calyx lobes not overlapping; fls. large | calycina |
| <i>C. gronovii</i> | |
| Calyx lobes about as long as corolla | latiflora |
| Calyx lobes shorter than the cylindrical corolla | vulgivaga |

NOTE:—*C. polygonorum*, according to Yuncker, is the same plant as that described by Gray under the name of *C. obtusiflora*. Yuncker recognizes *C. obtusiflora*, which is found only in S. America. Yuncker prefers *C. pentagona* instead of *C. arvensis*; he also accepts Small's *C. glandulosa* in preference to *C. obtusiflora glandulosa*.

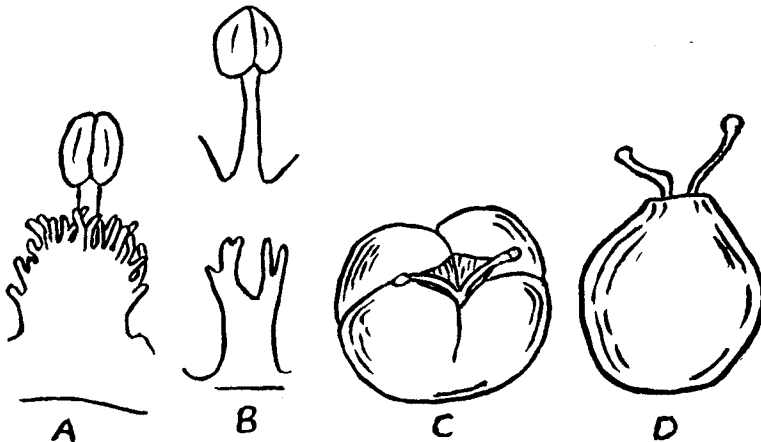


Fig. 1.—Types of scales and capsules: A, prominent scale of *Cuscuta pentagona*; B, rudimentary scale of *C. polygonorum*; C, compressed capsule of *C. polygonorum*; D, conical-globose capsule of *C. gronovii*. After Yuncker.

SPECIMENS OUTSIDE OF IOWA IN THE AMES HERBARIUM
CITED BY F. G. YUNCKER

- C. chapalana* State of Jalisco, Mexico (C. G. Pringle No. 5349).
C. corymbosa Fed. District, Mexico (C. G. Pringle No. 6574).
C. indecora Butte county, California (A. A. Heller No. 11677).
C. gracillima State of Morelos, Mexico (C. G. Pringle No. 6185).
C. pentagona Winchester, Massachusetts (Fernald and Weatherby No. 259); Neueces county, Texas (A. A. Heller No. 1549); Eagle Rock, Missouri (B. F. Bush No. 63); Carrabelle, Florida (A. H. Curtiss No. 5881).
C. potosina Federal Dist., Mexico (C. G. Pringle No. 6575).
C. polygonorum Washington, D. C. (E. S. Steele, 1900).
C. rostrata Swain county, North Carolina (Beardslee and C. A. Kofoid, 1891).
C. rugosiceps State of Oaxaca, Mexico (C. G. Pringle No. 4967).
C. salina Skamania county, Washington (W. N. Suksdorf No. 1487). Also in the U. S. Nat. Herb. as sheet 49,803.
C. subinclusa Butte county, California (A. A. Heller No. 11588).
C. tinctoria San Luis Potosi, Mexico (J. G. Schaffner No. 377); State of Jalisco, Mexico (C. G. Pringle No. 4529).
C. umbellata State of Puebla, Mexico (C. G. Pringle No. 6297).

DEPARTMENT OF BOTANY,
GRINNEL COLLEGE.