

1938

A Preliminary List of the Dolichopidae of Iowa

Bernard G. Berger
Iowa Wesleyan College

H. E. Jaques
Iowa Wesleyan College

Copyright © Copyright 1938 by the Iowa Academy of Science, Inc.
Follow this and additional works at: <https://scholarworks.uni.edu/pias>

Recommended Citation

Berger, Bernard G. and Jaques, H. E. (1938) "A Preliminary List of the Dolichopidae of Iowa," *Proceedings of the Iowa Academy of Science*: Vol. 45: No. 1 , Article 77.
Available at: <https://scholarworks.uni.edu/pias/vol45/iss1/77>

This Research is brought to you for free and open access by UNI ScholarWorks. It has been accepted for inclusion in Proceedings of the Iowa Academy of Science by an authorized editor of UNI ScholarWorks. For more information, please contact scholarworks@uni.edu.

A PRELIMINARY LIST OF THE DOLICHOPIDAE OF IOWA

BERNARD G. BERGER AND H. E. JAQUES

The Dolichopidae are small flies not exceeding eight millimeters in length, and are almost always bright metallic green or blue in color. The adults are found especially abundant on plants around sand and mud, as well as on rocks and plants in the water. They are predaceous flies living on small, soft bodied insects. The genera *Laxina*, *Condylostylus* and *Sciapus* may be found on leaves of shaded flowers in search of food. These flies may be readily distinguished from the members of other families by the absence of a cross vein between the discal and the second basal cell, these uniting to form a single cell. Male Dolichopids possess a great variety

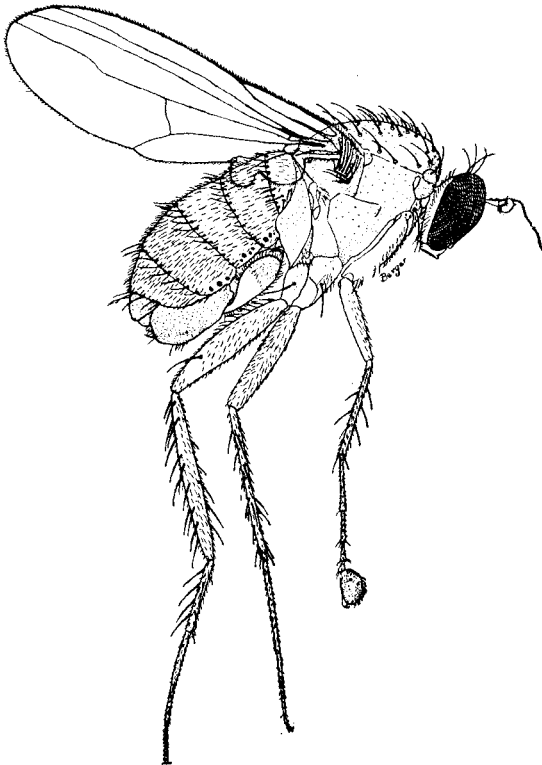


Fig. 1. *Dolichopus lobatus* Lw.

of secondary sexual characters. These characters are found on the tarsi, tibiae, femora, antennae and many other places. These are thought to be ornaments which are exhibited before the females.

The list herewith submitted contains fourteen genera, and fifty-nine species. Specimens of each of these species are in the Iowa Insect Survey Collection at Iowa Wesleyan College. The determinations have been made or checked by Mr. Greene and Mr. Fred C. Harmston for which the authors extend grateful recognition. Catalog numbers used are taken from "A Catalog of the Diptera of Iowa," by H. E. Jaques, an unpublished catalog used for the Iowa Insect Survey.

- | | |
|---|---|
| 143-11 <i>Sciapus scintillans</i> Lw. | 153-42 <i>Dolichopus batillifer</i> Lw. |
| 143-14 <i>Sciapus unifasciatus</i> Say. | 153-43 <i>Dolichopus bifractus</i> Lw. |
| 143-16 <i>Sciapus comatus</i> Schiner | 153-46 <i>Dolichopus calcaratus</i> Ald. |
| 143-31 <i>Condylostylus siphon</i> Say. | 153-48 <i>Dolichopus comatus</i> Lw. |
| 143-32 <i>Condylostylus furcatus</i> V. D. | 153-49 <i>Dolichopus canadensis</i> V. D. |
| 143-51 <i>Laxina patibulatus</i> Say. | 154-4 <i>Dolichopus cuprinus</i> Wiedemann |
| 143-52 <i>Laxina scobinator</i> Lw. | 154-5 <i>Dolichopus dakotensis</i> Ald. |
| 143-53 <i>Laxina caudatus</i> Wd. | 154-9 <i>Dolichopus deterius</i> Lw. |
| 143-54 <i>Laxina flavipes</i> Ald. | 154-17 <i>Dolichopus flagellitenens</i>
Wheel. |
| 143-55 <i>Laxina incrimis</i> Lw. | 155-5 <i>Dolichopus indigena</i> V. C. & A. |
| 143-56 <i>Laxina calcaratus</i> Lw. | 155-8 <i>Dolichopus lobatus</i> Lw. |
| 144-3 <i>Diaphorus leucostoma</i> Loew | 155-10 <i>Dolichopus longipennis</i> Lw. |
| 144-7 <i>Diaphorus sodalis</i> Lw. | 155-18 <i>Dolichopus ovatus</i> Lw. |
| 144-8 <i>Diaphorus spectabilis</i> Lw. | 155-19 <i>Dolichopus pachycnemus</i> Lw. |
| 145-4 <i>Chrysotus barbatus</i> Lw. | 155-25 <i>Dolichopus myosota</i> O. S. |
| 145-9 <i>Chrysotus cornutus</i> Lw. | 156-6 <i>Dolichopus ramifer</i> Lw. |
| 146-2 <i>Chrysotus obliquus</i> Lw. | 156-10 <i>Dolichopus retinens</i> V. C.
& A. |
| 146-3 <i>Chrysotus pallipes</i> Lw. | 156-12 <i>Dolichopus scapularis</i> Lw. |
| 146-7 <i>Chrysotus picticornis</i> Lw. | 156-20 <i>Dolichopus socius</i> Lw. |
| 147-1 <i>Argyra albicans</i> Lw. | 156-22 <i>Dolichopus sarotes</i> Lw. |
| 148-81 <i>Syntormon cinereiventris</i> Lw. | 157-4 <i>Dolichopus terminalis</i> Lw. |
| 149-2 <i>Sympycnus lineatus</i> Lw. | 157-7 <i>Dolichopus variabilis</i> Lw. |
| 149-3 <i>Sympycnus nodatus</i> Lw. | 158-5 <i>Gymnopternus crassicauda</i> Lw. |
| 149-51 <i>Neurigona aestiva</i> VanD. | 158-12 <i>Gymnopternus frequens</i> Lw. |
| 150-5 <i>Neurigona rubella</i> Lw. | 159-2 <i>Gymnopternus meniscus</i> Lw. |
| 152-1 <i>Hydrophorus aestuum</i> Lw. | 159-11 <i>Gymnopternus scotias</i> Lw. |
| 152-41 <i>Scellus exustus</i> Wlk. | 159-17 <i>Gymnopternus minutus</i> Lw. |
| 153-3 <i>Dolichopus absonus</i> V. C. & A. | 160-53 <i>Pelastoneurus lamellatus</i> Lw. |
| 153-4 <i>Dolichopus acuminatus</i> Lw. | 160-58 <i>Pelastoneurus vagans</i> Lw. |
| 153-41 <i>Dolichopus barbicauda</i>
V. C. & A. | |

DEPARTMENT OF BIOLOGY,
IOWA WESLEYAN COLLEGE,
MT. PLEASANT, IOWA.