

1939

A List of the Mordellidea (Coleoptera) Known to Occur in Iowa

H. E. Jaques
Iowa Wesleyan College

Donald Gordner
Iowa Wesleyan College

Let us know how access to this document benefits you

Copyright ©1939 Iowa Academy of Science, Inc.

Follow this and additional works at: <https://scholarworks.uni.edu/pias>

Recommended Citation

Jaques, H. E. and Gordner, Donald (1939) "A List of the Mordellidea (Coleoptera) Known to Occur in Iowa," *Proceedings of the Iowa Academy of Science*, 46(1), 427-428.

Available at: <https://scholarworks.uni.edu/pias/vol46/iss1/127>

This Research is brought to you for free and open access by the IAS Journals & Newsletters at UNI ScholarWorks. It has been accepted for inclusion in Proceedings of the Iowa Academy of Science by an authorized editor of UNI ScholarWorks. For more information, please contact scholarworks@uni.edu.

Offensive Materials Statement: Materials located in UNI ScholarWorks come from a broad range of sources and time periods. Some of these materials may contain offensive stereotypes, ideas, visuals, or language.

A LIST OF THE MORDELLIDAE (COLEOPTERA)
KNOWN TO OCCUR IN IOWA

H. E. JAQUES AND DONALD GORDNER

The tumbling flower beetles, as these small active insects are called, are capable of running and flying about with great rapidity. Their habit of kicking and tumbling about after having fallen out of a flower is responsible for their common name. They are small, wedge-shaped beetles; their body arched; head bent downward and the abdomen usually prolonged into a pointed style. In most species the hind legs are very long, front legs short, the hind tarsi long and compressed. The tarsal claws are either simple or cleft to the base. They are usually black, densely covered with fine silken pubescence, and often spotted or banded with yellow or silver. The adults are found on flowers or on or under the bark of dead trees. The larvae live in dead wood and pith of plants, some of

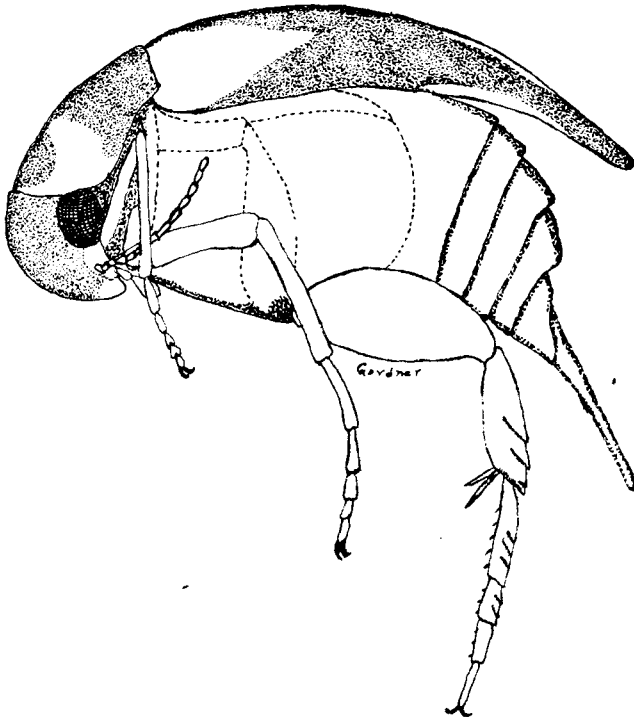


Fig. 1. *Mordellestina ornata* (Melsh.)

them being carnivorous, eating the larvae of Lepidoptera and Diptera which they find in the plants.

Besides the above characters the Mordellidae have four-jointed maxillary palpi, head vertical and applied very closely to the prosternum, sharply narrowed behind the eyes. Antennae slender, eleven-jointed and inserted at the sides of the front. Thorax narrowed in front, elytra narrowed behind, leaving the tip of the abdomen exposed. Many of the species have small black ridges on the outer surface of the hind tibia and tarsi. These prominent characters are used in separating these species.

Thirty-eight of the species listed as being known for Iowa are represented by specimens in the Iowa Insect Survey collection and represent some twenty years of state-wide collecting. Work done at the Lakeside Laboratory and the extensive collecting trips associated with it, have contributed in a large way to these records. The other species are reported by Wickham or by Leng.

The numbers are those of Leng's catalog.

7804 <i>Tomoxia bidentata</i> (Say)	7873 <i>Modellistena testacea</i> Blatch.
7805 <i>Tomoxia lineella</i> Lec.	7875 <i>Mordellistena simiusta</i> Lec.*
7810 <i>Mordella melaena</i> Germ.	7879 <i>Mordellistena nigricans</i> (Melsh.)*
7811 <i>Mordella scutellaris</i> Fab.	7883 <i>Mordellistena splendens</i> Smith
7814 <i>Mordella octopunctata</i> Fab.	7886 <i>Mordellistena sexnotata</i> Dury
7817 <i>Mordella marginata</i> Melsh.	7888 <i>Mordellistena pustulata</i> (Melsh.)
7818 <i>Mordella lunulata</i> Hellmuth	7889 <i>Mordellistena convicta</i> Lec.
7819 <i>Mordella serval</i> Say	7893 <i>Mordellistena morula</i> Lec.
7821 <i>Mordella oculata</i> Say	7894 <i>Mordellistena ambusta</i> Lec.
7924 <i>Mordella triloba</i> (Say)	7896 <i>Mordellistena smithi</i> Dury
7825 <i>Mordella undulata</i> Melsh.	7899 <i>Mordellistena unicolor</i> Lec.
7827 <i>Mordella discoidea</i> Melsh.	7901 <i>Mordellistena marginalis</i> (Say)
7389 <i>Mordellistena trifasciata</i> (Say)*	7902 <i>Mordellistena divisa</i> Lec.
7839 <i>Mordellistena lepidula</i> Lec*	7905 <i>Mordellistena aequalis</i> Smith
7841 <i>Mordellistena limbalis</i> (Melsh.)	7908 <i>Mordellistena wolcotti</i> Lilj.**
7848 <i>Mordellistena vapida</i> Lec.	7910 <i>Mordellistena pubescens</i> Fab.
7855 <i>Mordellistena fulvicollis</i> (Melsh.)	7911 <i>Mordellistena bihamata</i> (Melsh.)
7856 <i>Mordellistena ornata</i> (Melsh.)	7913 <i>Mordellistena fuscata</i> (Melsh.)
7858 <i>Mordellistena scapularis</i> (Say)*	7923 <i>Mordellistena suturella</i> Hellm.
7859 <i>Mordellistena comata</i> (Lec.)	7927 <i>Mordellistena aemula</i> Lec.*
7860 <i>Mordellistena aspersa</i> (Melsh.)	7931 <i>Anthobatula trifasciata</i> (Melsh.)
7869 <i>Mordellistena picilabris</i> Hellm.	7943 <i>Anaspis rufa</i> Say
7872 <i>Mordellistena grammica</i> Lec.	
7872b <i>Mordellistena grammica ustulata</i> Lec.*	

* Reported by Wickham.

** Reported by Leng.

IOWA WESLEYAN COLLEGE,
MOUNT PLEASANT, IOWA.