

1945

## A Preliminary List of the Carabidae Known to Occur in Iowa

H. E. Jaques  
*Iowa Wesleyan College*

Leonard Redlinger  
*Iowa Wesleyan College*

Copyright ©1945 Iowa Academy of Science, Inc.

Follow this and additional works at: <https://scholarworks.uni.edu/pias>

---

### Recommended Citation

Jaques, H. E. and Redlinger, Leonard (1945) "A Preliminary List of the Carabidae Known to Occur in Iowa," *Proceedings of the Iowa Academy of Science*, 52(1), 293-298.

Available at: <https://scholarworks.uni.edu/pias/vol52/iss1/42>

This Research is brought to you for free and open access by the Iowa Academy of Science at UNI ScholarWorks. It has been accepted for inclusion in Proceedings of the Iowa Academy of Science by an authorized editor of UNI ScholarWorks. For more information, please contact [scholarworks@uni.edu](mailto:scholarworks@uni.edu).

## A PRELIMINARY LIST OF THE CARABIDAE KNOWN TO OCCUR IN IOWA

H. E. JAQUES AND LEONARD REDLINGER

Ground Beetles, as this Coleopterous family is called, are for the most part terrestrial and hide in almost every conceivable place. They are particularly abundant under stones and objects on the ground and wherever other small invertebrates are found. Practically all of them are carnivorous and mostly nocturnal in habits. Many species are attracted to lights, and may be easily collected at night or by the use of light traps. The Carabids are predacious on worms, snails, caterpillars, grubs, maggots, and in fact almost any living animal that they can overcome. Because of their predatory habits they are considered beneficial, however a few of the genera are harmful in that they devour berries, seeds, pollen, tender shoots and the foliage of plants.

The ground beetles vary widely in size some approaching the

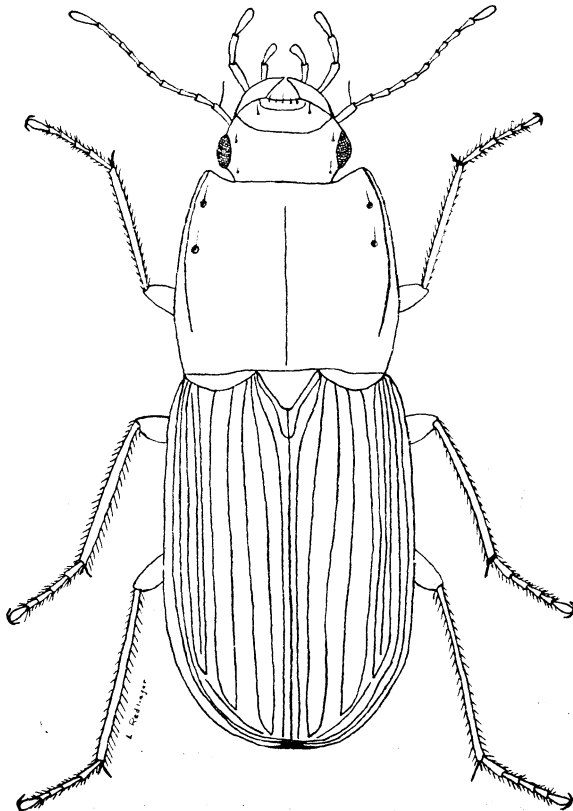


Fig. 1. 1465 *Dicaelus elongatus* Bon.

microscopic. At the other extreme, some Iowa species measure well over an inch in length. Many of the species are black, but some are highly colored, which makes them very attractive. The antennae are long, filiform, eleven-segmented and they are inserted between the base of the mandibles and the eyes. The mouth parts are well developed; the mandibles are large. The tarsi are five-segmented. The elytra almost always have longitudinal ridges and are frequently punctured. Two typical species are pictured. (Figs. 1 and 2).

The larvae of ground beetles are generally long and slender with sharp projecting mandibles. They live in the same obscure places as the adult insects but are more shy, and are consequently less frequently seen.

A list of the Carabidae known to occur in Iowa follows. The

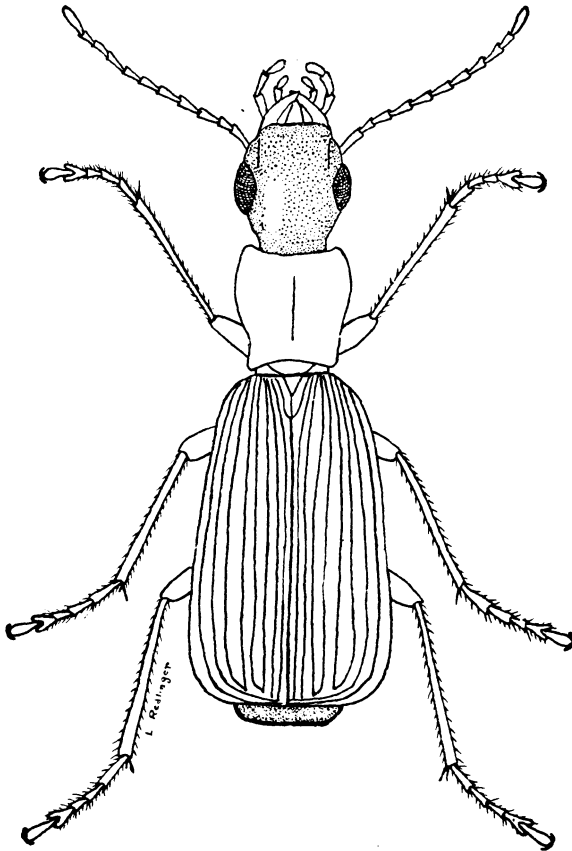


Fig. 2. 1710 *Calleida punctata* Lec.

ones marked with an \* are known only from the records of other collectors. Specimens of all species not so marked are found in the

Iowa Insect Survey Collection at Iowa Wesleyan College. Further collecting will doubtless furnish many additional species in this large and interesting family.

125	<i>Scaphinotus elevatus</i> (Fab.)	1522b	<i>A. extensicollis viridus</i> (Lec.)*
135	<i>Nomaretus fissicollis</i> Lec.	1523	<i>A. decorus</i> (Say)
162	<i>Sphaeroderus lecontei</i> Dej.	18938	<i>Europhilus elongatulus</i> Hald.
170	<i>Carabus sylvosus</i> Say	1537	<i>Platynidius errans</i> (Say)
171	<i>C. serratus</i> Say	1539	<i>P. tenuis</i> Lec.*
172	<i>C. limbatus</i> Say	1541	<i>P. nutatus</i> G&H, n.m.*
176	<i>Calosoma externum</i> Say	1542	<i>P. melanarius</i> (Dej.)
180	<i>C. scrutator</i> Fab.	1546	<i>Platynidius affinis</i> (Kby.)
181	<i>C. willcoxi</i> Lec.	1552	<i>P. deceptivus</i> Lec.*
183	<i>C. frigidum</i> Kby.	1553	<i>P. cupripennis</i> (Say)
195	<i>C. lugubre</i> Lec.	1555	<i>P. excavatus</i> (Dej.)
200	<i>C. obsoletum</i> Say.	1556	<i>Playtnusferreus</i> (Hald.)
204	<i>C. calidum</i> Fab.	1557	<i>Platynidius basalis</i> (Lec.)*
226	<i>Elaphrus cicatricosus</i> Lec.*	1558	<i>P. nutans</i> (Say)
230	<i>E. riparius</i> L.	1560	<i>P. picticornis</i> Newn.*
233	<i>E. ruscarius</i> Say	1566	<i>P. octopunctatus</i> (Fab.)
241	<i>Loricera caeruleascens</i> (L.)*	1567	<i>P. placidus</i> (Say)
		1573	<i>P. obsoleta</i> (Say)*
245	<i>Opisthius richardsoni</i> Kby.	1577	<i>P. aeruginosus</i> (Dej.)*
		1579	<i>P. crenistriatus</i> Lec.
246	<i>Notiophilus aeneus</i> Hbst.*	1581	<i>P. punctiformis</i> (Say)
		1582	<i>Platynus sordens</i> Kby.
247	<i>N. semistriatus</i> Say	1584	<i>Platynidius ruficornis</i> Lec.*
251	<i>N. novemstriatus</i> Lec.		
292	<i>Nebria pallipes</i> Say	1586	<i>Platynus gemellus</i> Lec.
295	<i>N. lacustris</i> Csy.	1587	<i>Platynidius picipennis</i> (Kby.)
308	<i>Pasimachus depressus</i> Fab.	1588	<i>P. lutulentus</i> Lec.*
310	<i>P. elongatus</i> Lec.	1592	<i>Platynus obscurus</i> Hbst.
316	<i>Scarites subterraneus</i> Fab.	1595	<i>Olisthopus parmatus</i> (Say)
317	<i>S. substriatus</i> Hald.	1596	<i>O. micans</i> Lec.*
324	<i>Dyschirius nigripes</i> Lec.	1609	<i>Atranus pubescens</i> (Dej.)
329	<i>D. aeneolus</i> Lec.*	1610	<i>Leptotrachelus dorsalis</i> (Fab.)
331	<i>D. globulosus</i> Say		
334	<i>D. haemorrhoidalis</i> Dej.*	1612	<i>Casnonia pennsylvanica</i> L.
339	<i>D. sphaericollis</i> Say		
341	<i>D. truncatus</i> Lec.*	1615	<i>Galerita atripes</i> Lec.*
342	<i>D. erythrocerus</i> Lec.*	1616	<i>G. janus</i> Fab.
355	<i>D. hispidus</i> Lec.	1620	<i>G. bicolor</i> Drury
358	<i>Clivina dentipes</i> Dej.	1620b	<i>G. bicolor intermedia</i> Csy.
359	<i>C. impressifrons</i> Lec.		
366	<i>C. rufa</i> Lec.*	1623	<i>Zuphium americanum</i> Dej.
369	<i>C. americana</i> Dej.		
372	<i>C. striatopunctata</i> Dej.*	1636	<i>Tetragonoderus fasciatus</i> Hald.
373	<i>C. ferrea</i> Lec.*		
375	<i>C. bipustulata</i> (Fab.)	1641	<i>Lebia grandis</i> Hentz.
380	<i>Aspidoglossa subangulata</i> (Chd.)*	1642	<i>L. atriventris</i> Say
		1643	<i>L. tricolor</i> Say
383	<i>Schizogenius lineolatus</i> (Say)	1655	<i>L. viridis</i> Say
		1658	<i>L. pumila</i> Dej.
385	<i>S. ferrugineus</i> Putz.	1664	<i>L. viridipennis</i> Dej.
386	<i>S. amphibioides</i> (Hald.)*	1667	<i>L. ornata</i> Say
396	<i>Ardistomis puncticollis</i> (Dej.)	1671	<i>L. analis</i> Dej.
		1672	<i>L. fuscata</i> Dej.

399	<i>Panagaeus fasciatus</i> Say	18981	<i>Smicronyx canonica</i> Csy.
408	<i>Bembidion inaequale</i> Say	1675	<i>Lebia scapularis</i> Dej.
411	<i>B. littorale</i> (Oliv.)*	1681	<i>L. vittata</i> Fab.
419	<i>B. punctatostriatum</i> Say*	1686	<i>L. bivittata</i> Fab.
422	<i>B. aenulum</i> Hayw.*	1691	<i>Dromius piceus</i> Dej.
423	<i>B. robusticolle</i> Hayw.*	1694	<i>Apristus subsulcatus</i> (Dej.)
426	<i>B. confusum</i> Hayw.		<i>Blechrus glabratus</i> (Duft.)
429	<i>B. coxendix</i> Say*	1696	<i>Metabletus americanus</i> (Dej.)
431	<i>B. bifossulatum</i> (Lec.)	1699	<i>Axinopalpus biplagiatus</i> (Dej.)
432	<i>B. americanum</i> Dej.		<i>Calleida punctata</i> Lec.
438	<i>B. nitidum</i> (Kby.)*		<i>C. purpurea</i> (Say)*
439	<i>B. obliquulum</i> Lec.*	1700	<i>Plochionus timidus</i> Hald.
440	<i>B. laevigatum</i> Say		<i>Pinacodera limbata</i> (Dej.)
482	<i>B. planatum</i> (Lec.)*	1710	<i>P. platicollis</i> (Say)
512	<i>B. nigrum</i> Say	1712	<i>P. platicollis fuscata</i> (Dej.)
565	<i>B. texanum</i> Chd.	1723	<i>Cymindis planipennis</i> Lec.
572	<i>B. picipes</i> (Kby.)*	1725	<i>C. pilosa</i> Say
577	<i>B. Postremum</i> Say		<i>C. cribrata</i> Lec.*
584	<i>B. lucidum</i> (Lec.)	1726	<i>C. americana</i> Dej.
588	<i>B. tetracolum</i> Say*	1726a	<i>Apenes lucidula</i> (Dej.)
590	<i>B. dilatatum</i> (Lec.)		<i>A. sinuata</i> (Say)
591	<i>B. honestum</i> Say*	1742	<i>Pentagonica flavipes</i> (Lec.)*
592	<i>B. chalceum</i> Dej.		<i>P. flavipes bicolor</i> Lec.
599	<i>B. fuscicrum</i> Mots.	1746	<i>Helluomorpha bicolor</i> Harris
648	<i>B. posticum</i> (Hald.)	1749	<i>Brachinus americanus</i> Lec.
651	<i>B. patruale</i> Dej.	1752	<i>B. janthinipennis</i> (Dej.)
655	<i>B. intermedium</i> (Kby.)	1753	<i>B. viridipennis perplexus</i> Dej.
658	<i>B. dorsale</i> Say*	1756	<i>B. pulchellus</i> Blatch.
659	<i>B. versutum</i> Lec.*	1760	<i>B. cyadripennis</i> Dej.
660	<i>B. variegatum</i> Say		<i>B. cyanipennis</i> Say
665	<i>B. fidele</i> Csy.*	1760a	<i>B. alternans</i> Dej.
679	<i>B. arcuatum</i> Lec.	1770	<i>B. ballistarius</i> Lec.
680	<i>B. graciliforme</i> Hayw.		<i>B. fumans</i> (Fab.)
686	<i>B. cordatum</i> (Lec.)	1774	<i>B. cordicollis</i> Dej.
705	<i>B. affine</i> Say		<i>Chlaenius tomentosus</i> (Say)
722	<i>B. flavipictum</i> Mots.	1775	<i>C. purpuricollis</i> Rand.*
723	<i>B. versicolor</i> (Lec.)	1776a	<i>C. nigher</i> Rand.*
730	<i>B. oberthuri</i> Hayw.*		<i>C. impunctifrons</i> Say
737	<i>B. quadrimaculatum</i> (L)	1777	<i>C. pennsylvanicus</i> Say
744	<i>B. pedicellatum</i> Lec.	1780	<i>C. brevilabris</i> Lec.
754	<i>B. sulcatum</i> (Lec.)*	1783	<i>C. tricolor</i> Dej.
759	<i>B. frontale</i> (Lec.)	1786	<i>C. nemoralis</i> Say
792	<i>Pericompsus ephippiatus</i> (Say)	1788	<i>C. solitarius</i> Say
797	<i>Tachyura dolosa</i> (Lec.)*	1789	<i>C. leucoscelis</i> Chev.
805	<i>T. incurva</i> (Say.)	1790	<i>C. cordicollis</i> Kby.
811	<i>T. granaria</i> (Dej.)*	1806	<i>C. prasinus</i> Dej.
825	<i>T. capax</i> (Lec.)	1808	<i>C. platyderus</i> Chd.*
829	<i>T. tripunctata</i> (Say)*	1810	<i>C. diffinis</i> Chd.
834	<i>T. ferrugineus</i> (Dej.)	1814	<i>C. laticollis</i> Say
836+	<i>Tachys</i> sp.	1817	<i>C. sericeus</i> Forst.
849	<i>T. proximus</i> (Say)	1819	<i>C. fuscicornis</i> Dej.
851	<i>T. scitulus</i> Lec.	1821	
857	<i>T. coruscus</i> Lec.	1822	
883	<i>T. laevus</i> (Say)	1830	
890	<i>Tachyta nana</i> (Gyll.)	1831	
892	<i>T. inornata</i> Say	1831a	
898	<i>Trachymenis flavicauda</i> Say	1834	
901	<i>Patrobus longicornis</i> (Say)	1840	
1006	<i>Pterostichus adoxus</i> (Say)	1841	
1020	<i>Leptoferonia ovicollis</i>	1842	
		1846	
		1847	

	(Schffr.)*	1848	<i>C. erythropus</i> Germ.
1034	<i>Anaferonia constricta</i> (Say)	1856	<i>Anomoglossus emarginatus</i> (Say)
1040	<i>A. incisa</i> (Lec.)	1858	<i>A. pusillus</i> (Say)
1058	<i>Eumolops sodalis</i> (Lec.)	1860	<i>Brachylobus lithophilus</i> (Say)
1061	<i>E. colossus</i> (Lec.)		
1062	<i>E. Torva</i> (Lec.)	1862	<i>Lachnocrepis parallelus</i> (Say)
1070	<i>Evarthrus seximpressus</i> (Lec.)	1868	<i>Oodes americanus</i> Dej.
1074	<i>E. orbatus</i> (Newn.)*	1870	<i>O. cupreus</i> Chd.
1089	<i>Euferonia stygica</i> (Say)	1878	<i>Geopinus incrassatus</i> (Dej.)
1103	<i>Abacidus sculptus</i> (Lec.)		
1105	<i>A. permundus</i> (Say)	1882	<i>Nothopus valens</i> Csy.
1108	<i>Gastrosticta ventralis</i> (Say)	1884	<i>N. zabroides</i> Lec.*
		1886	<i>Cratacanthus dubius</i> (Beauv.)
1110	<i>G. obscura</i> (Say)		
1161	<i>Poecilus chalcites</i> Say	1895	<i>Pharalus testaceus</i> (Lec.)
1162	<i>P. lucublandus</i> Say		
1164	<i>P. convexicollis</i> Say	1896	<i>Harpalus caliginosus</i> (Fab.)
1166	<i>Lophoglossus haldemani</i> (Lec.)*	1897	<i>H. erraticus</i> Say
1167	<i>L. tartaricus</i> (Say)	1907	<i>H. vagans</i> Lec.
1169	<i>L. scrutator</i> (Lec.)*	1910	<i>H. erythropus</i> Dej.
1173	<i>Omaseus ebeninus</i> Dej.	1915	<i>H. compar</i> Lec.
1174	<i>O. caudicalis</i> (Say)	1920	<i>H. longicollis</i> Lec.
1175	<i>O. luctuosus</i> (Dej.)	1922	<i>H. faunus</i> Say
1176	<i>O. corvinus</i> (Dej.)	1925	<i>H. pennsylvanicus</i> Deg.
1177	<i>Dysidius purpuratus</i> Lec.	1933	<i>H. viduus</i> Lec.
		1936	<i>H. rufimanus</i> Lec.*
1178	<i>D. mutus</i> (Say)	1956	<i>H. herbivagus</i> Say
1181	<i>Pseudargutor erythropus</i> (Dej.)	1957	<i>H. fallax</i> Lec.
		1971	<i>H. nitidulus</i> Chd.
1182	<i>Micromaseus patruelis</i> (Dej.)	1975	<i>H. ellipsis</i> Lec.
		1979	<i>H. funestus</i> Lec.
1183	<i>Micromaseus femoralis</i> (Kby.)	2006	<i>H. obesulus</i> Lec.*
		2007	<i>H. spadiceus</i> (Dej.)*
1188	<i>Bothriopterus pennsylvanicus</i> (Lec.)	2009	<i>H. vulpeculus</i> Say
		2010	<i>H. dichrous</i> Dej.
1209b	<i>Loxandrus lucidulus</i>	19077	<i>H. blanditus</i> Csy.
	<i>Brevicollis</i> (Lec.)*	2013	<i>Selenophorus opalinus</i> Lec.*
1209c	<i>L. minor</i> (Chd.)		
1223	<i>L. agilis</i> (Dej.)	2026	<i>S. ellipticus</i> Dej.
1243	<i>Curtonotus carivatus</i> (Lec.)	2034	<i>S. planipennis</i> Lec.
		2039	<i>S. pedicularius</i> Dej.
1244	<i>C. rufimanus</i> (Kby.)*	2051	<i>Gynandropus hylacis</i> (Say)
1256	<i>C. infaustus</i> Lec.	2064	<i>Discorderus parallelus</i> (Hald.)
1259	<i>C. pennsylvanicus</i> Hayw.		
1262	<i>Leiocnemis avida</i> (Say)	2066	<i>Hartonymus hoodi</i> Csy.
1265	<i>Bradytus exaratus</i> Dej.	2070	<i>Triplectrus carbonarius</i> (Say)
1267	<i>B. apricarius</i> (Payk.)		
1281	<i>Percosia obesa</i> (Say)	2071	<i>T. rusticus</i> (Say)
1285	<i>Celia patruelis</i> (Dej.)	2079	<i>T. dulcicollis</i> Laf.
1309	<i>C. remotestriata</i> Dej.*	2087	<i>Anisodactylus harrisii</i> Lec.
1319	<i>C. chalcea</i> Dej.*		
1350	<i>C. subaenea</i> Lec.	2088	<i>A. nigerrimus</i> Dej.
1372	<i>C. musculus</i> (Say)	2090	<i>A. nigrita</i> Dej.
1379sp.	<i>Amara</i> sp.	2092	<i>A. agricola</i> Say
1385	<i>A. impuncticollis</i> Say	2107	<i>A. coenus</i> Say
1389	<i>A. fallax</i> Lec.	2110	<i>Xestonotus lugubris</i> (Dej.)
1400	<i>A. cupreolata</i> Putz.		
1415	<i>A. polita</i> Lec.	2111	<i>Amphasia interstitialis</i> (Say)
1429	<i>A. basillaris</i> (Say)		

1430	<i>Triaena pallipes</i> Kby.	2112	<i>Pseudamphasia sericea</i> (Harris)
1433	<i>T. angustata</i> (Say)	2126	<i>Anadaptus discoideus</i> (Dej.)
1441	<i>Rembus major</i> Lec.	2127	<i>A. baltimorensis</i> (Say)
1441a	<i>R. major expansa</i> Csy.	2132	<i>Anisotarsus sayi</i> Blatch.
1442	<i>R. laticollis</i> Lec.	2139	<i>A. terminatus</i> (Say)
1443	<i>R. impressicollis</i> Dej.	2144	<i>Spongopus verticalis</i> Lec.
1444	<i>R. obtusa</i> Lec.	2146	<i>Trichocellus cognatus</i> Gyll*.
1446	<i>A. alternans</i> Csy.	2159	<i>Triliarthrus badiipennis</i> (Hald.)
1450	<i>Dicaelus dilatatus</i> Say	2163	<i>atrime dius</i> (Say)
1450a	<i>D. dejeani</i> Dej.	2171	<i>Stenocellus rupestris</i> (Say)
1452	<i>D. splendidus</i> Say	2173	<i>S. debilipes</i> (Say)*
1454	<i>D. purpuratus</i> Bon.*	2175	<i>S. congener</i> (Lec.)
1458	<i>D. sculptilis</i> Say	2203	<i>Amerinus linearis</i> (Lec.)
1460	<i>D. furvus</i> Dej.	2213	<i>Acupalpus carus</i> (Lec.)
1464	<i>D. ovalis</i> Lec.	2216	<i>Stenolophus carbonarius</i> (Dej.)
1465	<i>D. elongatus</i> Bon.	2218	<i>S. ochropezus</i> (Say)
1466	<i>D. ambiguus</i> Laf.	2220	<i>S. fuliginosus</i> Dej.
1468	<i>D. politus</i> Dej.	2234	<i>S. plebejus</i> Dej.
1470	<i>Badister notatus</i> Hald.	2238	<i>S. conjunctus</i> (Say)
1471	<i>B. pulchellus</i> Lec.	2245	<i>Tachistodes indistinctus</i> (Dej.)*
1472	<i>B. bipustulatus</i> Fab.*	2246	<i>T. testaceus</i> (Dej.)
1478	<i>B. flavipes</i> Lec.*	2247	<i>T. pauperculus</i> (Dej.)
1481	<i>B. reflexus</i> Lec.	2249	<i>T. partarius</i> (Say)
1482	<i>Calathus gregarius</i> Dej.	2251	<i>Agonoderus lineola</i> (Fab.)
1483	<i>C. ingratus</i> Dej.	2261	<i>A. comma</i> (Fab.)
1484	<i>C. opaculus</i> Lec.		
1489	<i>Pristodactyla impunctata</i> (Say)		
1513	<i>Platynidius decens</i> Say*		
1514	<i>P. sinuatus</i> (Dej.)		
1518	<i>P. cincticollis</i> (Say)*		
1521	<i>Platynus brunneomarginatus</i> Mann.		
1522	<i>Anchomenus extensicollis</i> (Say)		

BIOLOGY DEPARTMENT,  
IOWA WESLEYAN COLLEGE  
MT. PLEASANT, IOWA