

1950

A Wasp With Three Pairs of Wings (Hymenoptera; Ichneumonidae)

Jean L. Laffoon
Iowa State College

Let us know how access to this document benefits you

Copyright ©1950 Iowa Academy of Science, Inc.

Follow this and additional works at: <https://scholarworks.uni.edu/pias>

Recommended Citation

Laffoon, Jean L. (1950) "A Wasp With Three Pairs of Wings (Hymenoptera; Ichneumonidae)," *Proceedings of the Iowa Academy of Science*, 57(1), 467-468.

Available at: <https://scholarworks.uni.edu/pias/vol57/iss1/67>

This Research is brought to you for free and open access by the IAS Journals & Newsletters at UNI ScholarWorks. It has been accepted for inclusion in Proceedings of the Iowa Academy of Science by an authorized editor of UNI ScholarWorks. For more information, please contact scholarworks@uni.edu.

Offensive Materials Statement: Materials located in UNI ScholarWorks come from a broad range of sources and time periods. Some of these materials may contain offensive stereotypes, ideas, visuals, or language.

A Wasp With Three Pairs of Wings (Hymenoptera; Ichneumonidae)

By JEAN L. LAFFOON

An abnormal male specimen of *Cratichneumon unifasciatorius* (Say) was collected on June 25, 1949, at Ames, Iowa, by Miss Shirley Sparling, a student in beginning entomology. Because of the nature of the abnormality it appears worthy of a note. This specimen possesses three pairs of wings, one pair on each of the thoracic segments (see fig. 1). Unfortunately, this condition was not noted until some time after the insect was mounted, so that observations of the living insect and the opportunity to study the musculature were not available. The specimen is in good condition except for the left prothoracic wing which is badly torn.

The individual was compared with other specimens of the same species in an effort to discover if other structures were abnormal. No divergences from the normal were observed except in the case of the prothorax. The notum of the prothorax is apparently the

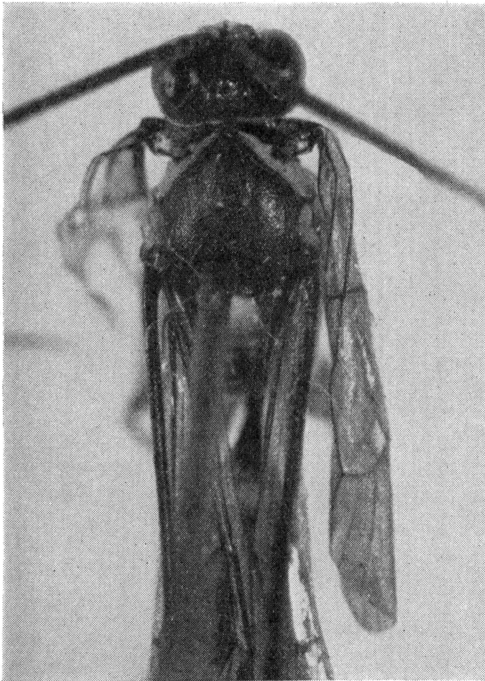


Figure 1

only sclerite affected by the abnormal condition, being divided into dorsal and ventral sections between which the wing is attached.

The prothoracic wing is about 8 mm. long, the mesothoracic 11 mm., and the metathoracic 8 mm. The venation of the prothoracic wing is of the same pattern as that of the mesothoracic wing, the only noted differences being in size. Axillary sclerites are present, but as the wings have not been removed from the wasp, the details of the arrangement of these sclerites have not been studied. The membrane of the prothoracic wing appears to be slightly weaker than that of the other wings.

Mr. John H. Staby of the Iowa State College Photoservice office did the photographic work for this paper. Miss Sparling has generously given this interesting wasp to the Iowa State College Insect Collection.

DEPARTMENT OF ZOOLOGY AND ENTOMOLOGY
IOWA STATE COLLEGE
AMES, IOWA