

# Proceedings of the Iowa Academy of Science

---

Volume 86 | Number

Article 9

---

1979

**Erratum: G. R. Hallberg, "Wind-aligned Drainage in Loess in Iowa."  
Proc. Iowa Acad. Sci . 86(1): p. 5.**

Copyright ©1979 Iowa Academy of Science, Inc.

Follow this and additional works at: <https://scholarworks.uni.edu/pias>

---

## Recommended Citation

(1979) "Erratum: G. R. Hallberg, "Wind-aligned Drainage in Loess in Iowa." Proc. Iowa Acad. Sci . 86(1): p. 5.," *Proceedings of the Iowa Academy of Science*, 86(2), 80-80.

Available at: <https://scholarworks.uni.edu/pias/vol86/iss2/9>

This Back Matter is brought to you for free and open access by the Iowa Academy of Science at UNI ScholarWorks. It has been accepted for inclusion in Proceedings of the Iowa Academy of Science by an authorized editor of UNI ScholarWorks. For more information, please contact [scholarworks@uni.edu](mailto:scholarworks@uni.edu).

ERRATUM: G.R. Hallberg, "Wind-aligned Drainage in Loess in Iowa." Proc. Iowa Acad. Sci. 86(1): p. 5.

LOESS DRAINAGE IN IOWA

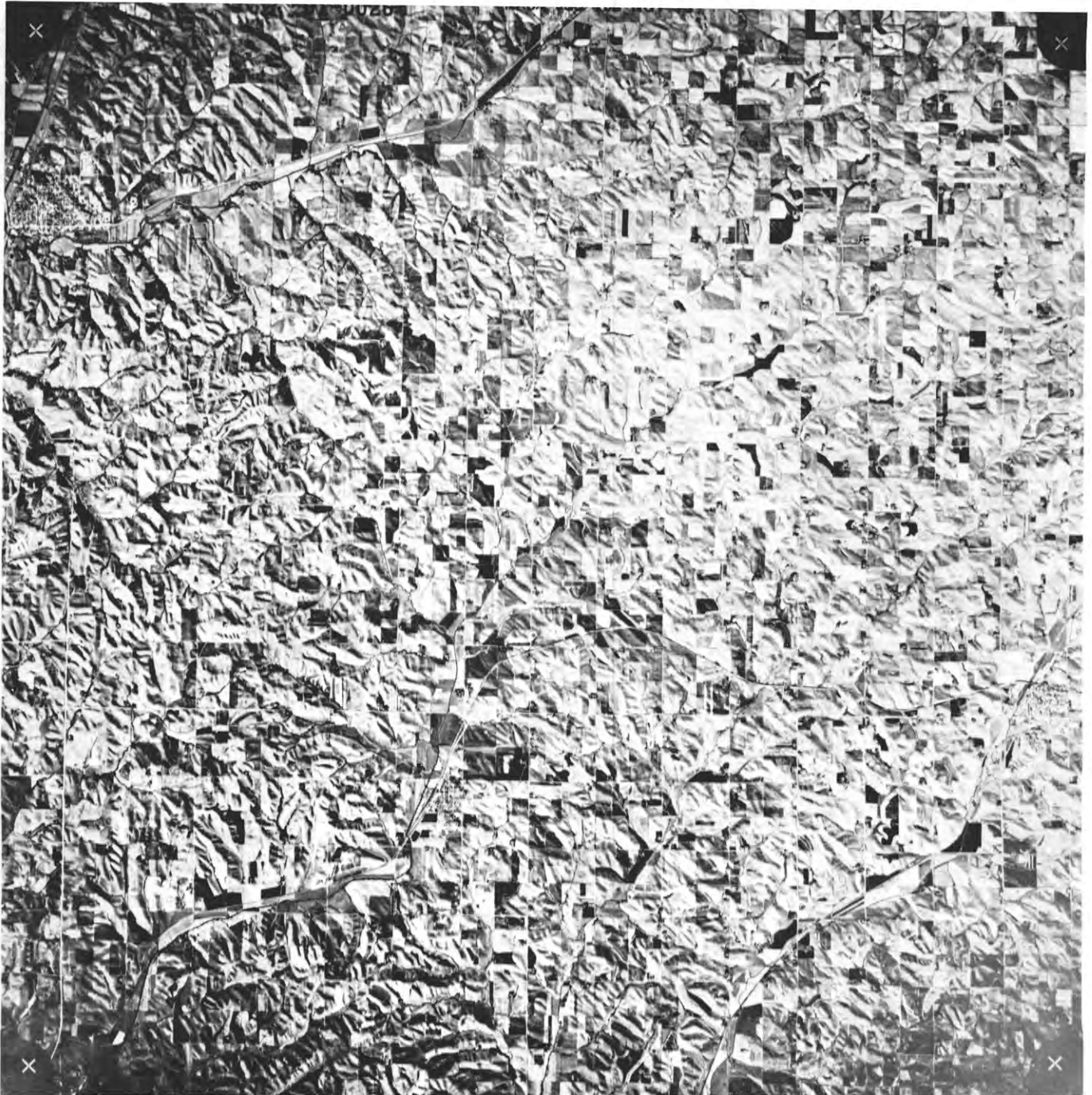


Figure 1. Black-and-white copy of NASA hi-altitude (60,000 ft; 18,300 m) CIR aerial-photograph, showing NW-SE aligned drainage. Boyer River appears on the northwest side of the image; the town of Manning in Carroll County appears in the southeast portion. Image taken 28 November 1973; in mid-afternoon.