

1990

Astronomy Bulletin - The 1991 Winter Sky

P. Steven Leiker
Center for Astrophysics

Follow this and additional works at: <https://scholarworks.uni.edu/istj>



Part of the [Science and Mathematics Education Commons](#)

Recommended Citation

Leiker, P. Steven (1990) "Astronomy Bulletin - The 1991 Winter Sky," *Iowa Science Teachers Journal*: Vol. 27 : No. 2 , Article 6.

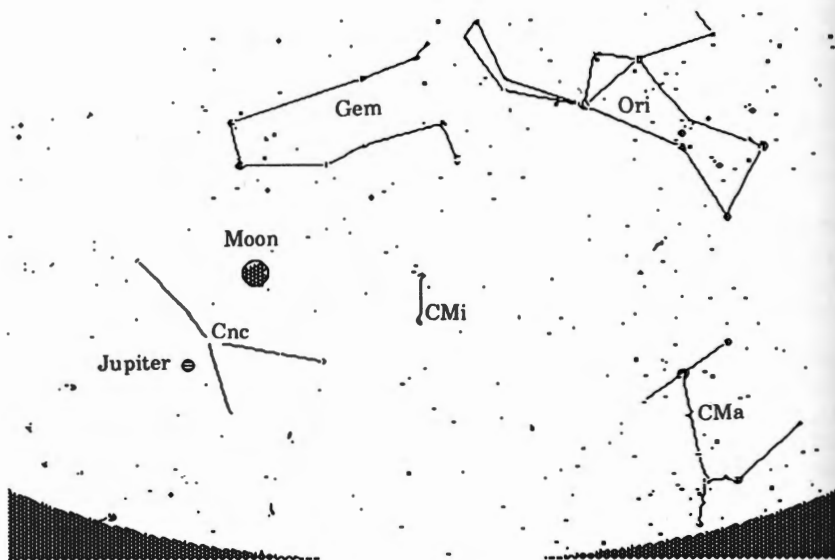
Available at: <https://scholarworks.uni.edu/istj/vol27/iss2/6>

This Article is brought to you for free and open access by UNI ScholarWorks. It has been accepted for inclusion in Iowa Science Teachers Journal by an authorized editor of UNI ScholarWorks. For more information, please contact scholarworks@uni.edu.

THE 1991 WINTER SKY January 1991 through February 1991

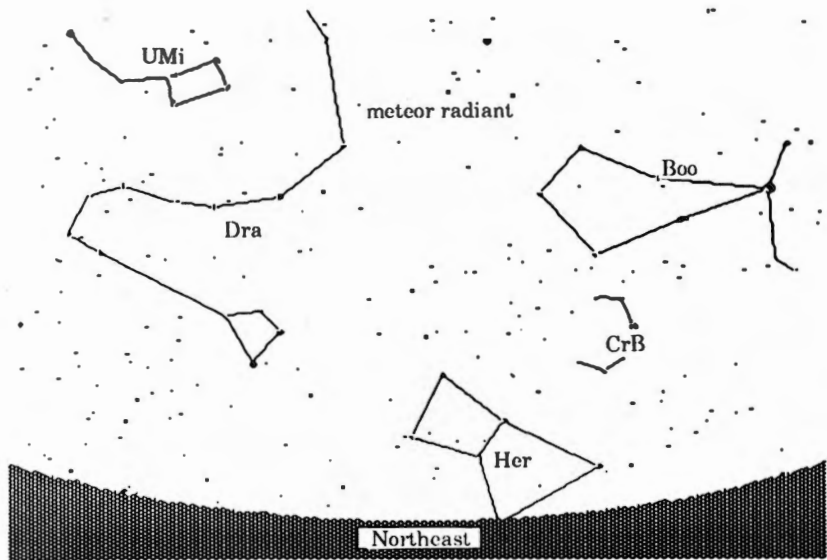
Figure 1: This view is seen by a person facing east on January 1 at about 9 p.m. The five constellations shown are Cnc=Cancer, Gem=Gemini, CMi=Canis Minor, Ori=Orion and CMa=Canis Major. The Moon is in the waxing gibbous phase and is nearly full. *Jupiter* is the bright object 11' to the lower left of the Moon.

Figure 2: This view of the sky may be seen by a person facing northeast at 3 a.m. on January 3. The five constellations outlined are UMi=Ursa Minor, Dra=Draco, Her=Hercules, CrB=Corona Borealis and Boo=Bootes. On this night, it is possible to see meteors of the Quadrantids meteor shower which will appear to radiate from a point between the constellations Draco and Bootes. This shower produces approximately 50 meteors per hour. Unfortunately, on this date, the Moon is nearly full and bright moonlight will make it difficult to see all but the brightest meteors.



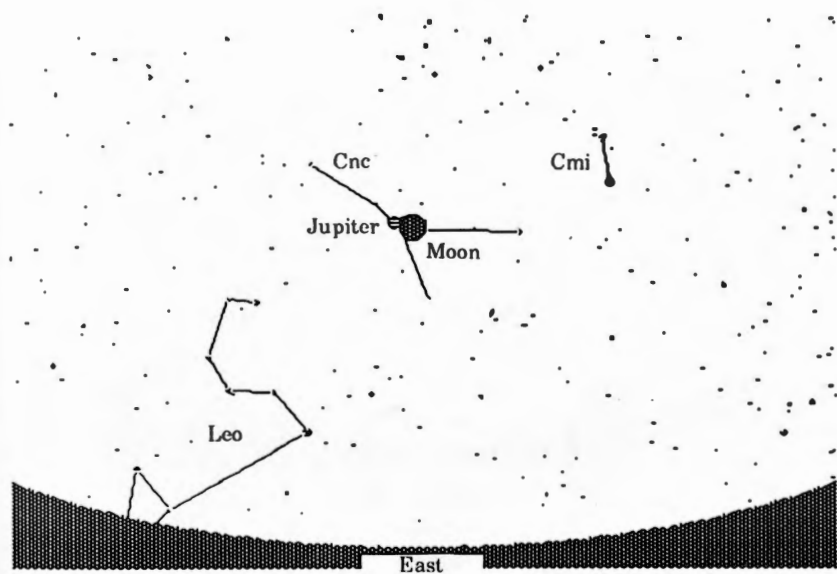
January 1, 1991
9:00 p.m.

Figure 1



January 3, 1991
 3:00 a.m.

Figure 2



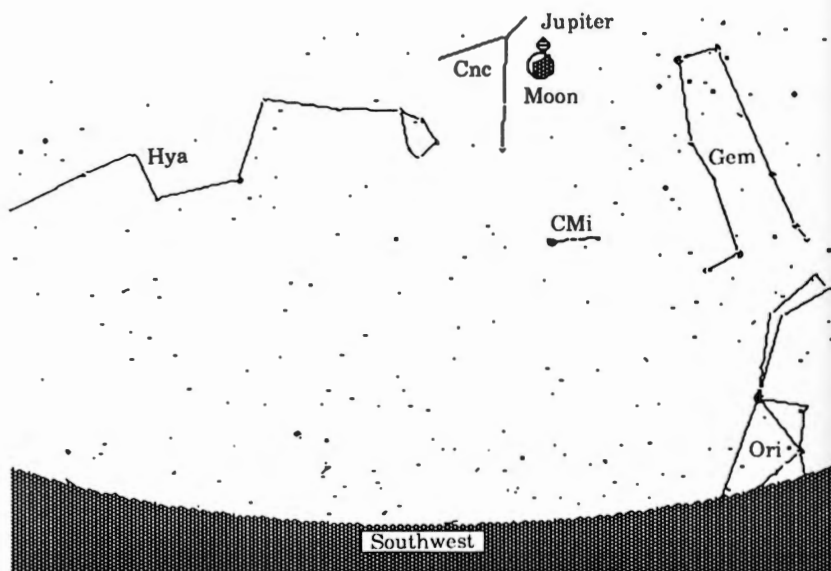
January 29, 1991
 8:00 p.m.

Figure 3

Figure 3: This is the view of the sky seen by a person facing east on January 29 at about 8 p.m. The constellations shown are CMi=Canis Minor, Cnc=Cancer and Leo. The Moon is full and *Jupiter* is approximately 2° to the left of the Moon.

Figure 4: On February 26, *Jupiter* is once again only about 2° from the Moon. The Moon is full. The constellations shown are Hya=Hydra, Cnc=Cancer, CMi=Canis Minor, Gem=Gemini and Ori=Orion.

P. Steven Leiker
Project ESTEEM
Center for Astrophysics
60 Garden Street, MS 71
Cambridge, MA 02138



February 26, 1991
1:30 a.m.

Figure 4