

1991

Astronomy Bulletin - The 1992 Spring Sky

Patrick Steven Leiker

Harvard-Smithsonian Center for Astrophysics

Follow this and additional works at: <https://scholarworks.uni.edu/istj>



Part of the Science and Mathematics Education Commons

Let us know how access to this document benefits you

Copyright © Copyright 1991 by the Iowa Academy of Science

Recommended Citation

Leiker, Patrick Steven (1991) "Astronomy Bulletin - The 1992 Spring Sky," *Iowa Science Teachers Journal*: Vol. 28: No. 3, Article 6.

Available at: <https://scholarworks.uni.edu/istj/vol28/iss3/6>

This Article is brought to you for free and open access by the IAS Journals & Newsletters at UNI ScholarWorks. It has been accepted for inclusion in Iowa Science Teachers Journal by an authorized editor of UNI ScholarWorks. For more information, please contact scholarworks@uni.edu.

Offensive Materials Statement: Materials located in UNI ScholarWorks come from a broad range of sources and time periods. Some of these materials may contain offensive stereotypes, ideas, visuals, or language.

THE 1992 SPRING SKY April to June 1992

Figure 1: On the night of April 21 and the morning of April 22, it may be possible to see meteors of the Lyrid meteor shower. The meteors will appear to originate or radiate from above the constellation Lyra. Figure 1 shows the approximate location of this radiant. Unfortunately, the Moon, which rises at 12:11 a.m., is in a waning gibbous phase and is 75 percent illuminated. Once the Moon rises it will be difficult, if not impossible, to see all but the brightest meteors. On a clear dark night, approximately 15 meteors per hour may be seen.

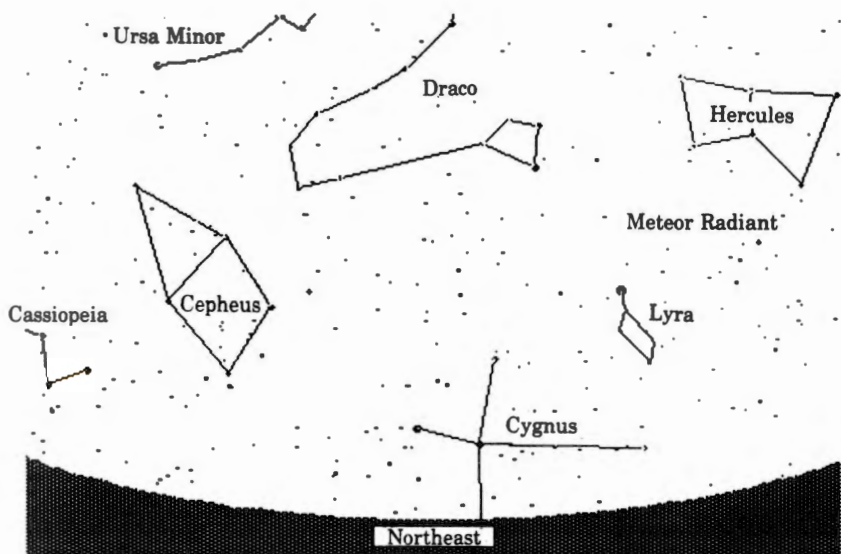


Figure 1
April 21, 1992
11:30 PM

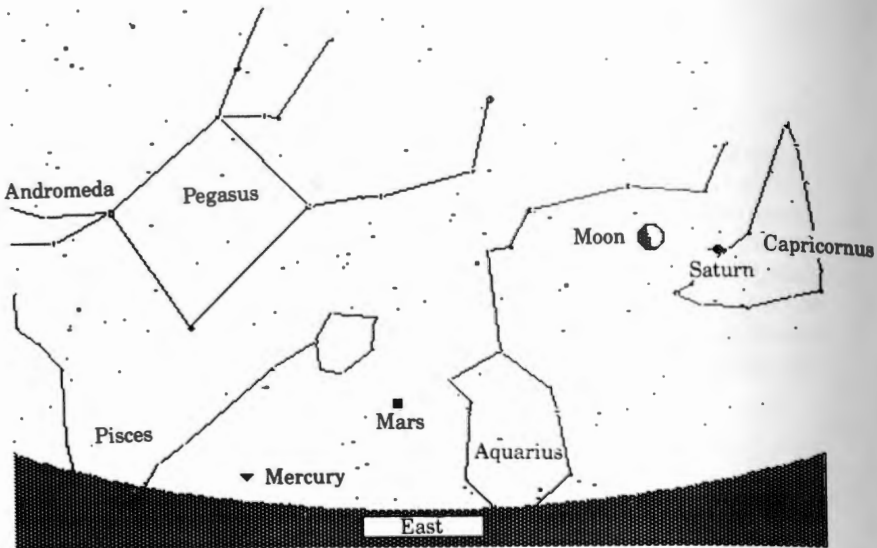


Figure 2
April 26, 1992
5:45 AM

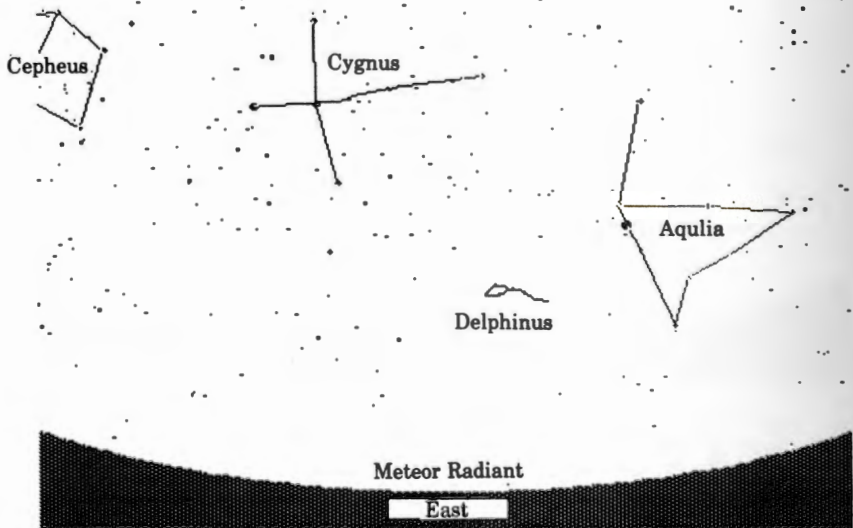


Figure 3
May 4, 1992
2:00 AM

Figure 2: Approximately 30 minutes before sunrise on April 26, the Moon, *Saturn*, *Mars* and perhaps *Mercury* may be visible. The Moon will be illuminated 36 percent. Saturn will be located about 7° to the right of the Moon. Mars will be directly east approximately 11° above the horizon. Seventeen degrees to the lower left of Mars, very near the horizon, is the planet Mercury. Binoculars may be necessary and would certainly improve your chances of seeing these planets in the morning twilight. The Sun will rise at 6:17 a.m.

Figure 3: On the night of May 3 and the morning of May 4, it may be possible to see meteors of the Eta Aquarid meteor shower. The meteors will appear to originate or radiate low on the eastern horizon, from above the constellation Aquarius, at 2:00 a.m. Figure 3 shows the approximate location of this radiant. Fortunately, the Moon is new and will not interfere with meteor observing. On a clear dark night, about 20 of these meteors per hour may be seen.

Figure 4: Early in the morning on May 10, *Saturn* and *Mars* will be visible. Saturn can be found in the constellation Capricornus, about 23° above the horizon. Mars is in the constellation Pisces and can be found about 45° to the lower right of Saturn. Mars will be close to the horizon, so binoculars may be necessary to see it. Sunrise is at 5:59 a.m.

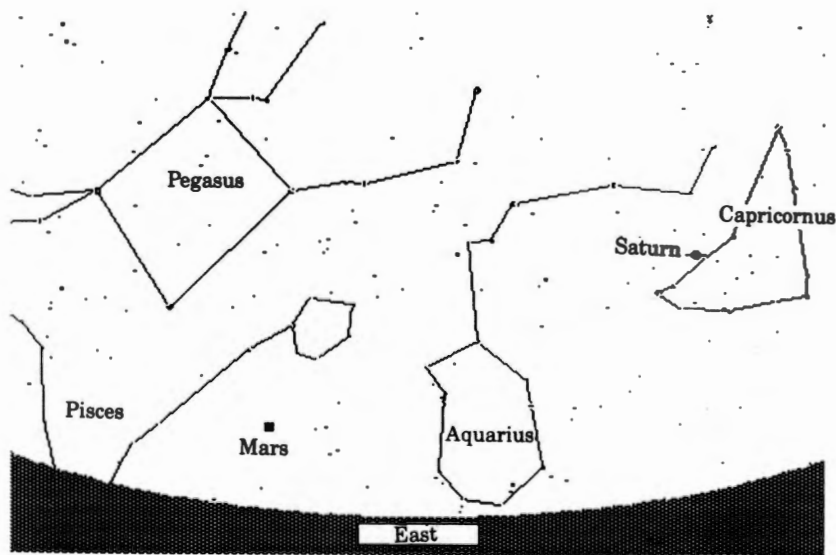


Figure 4
May 10, 1992
5:00 AM

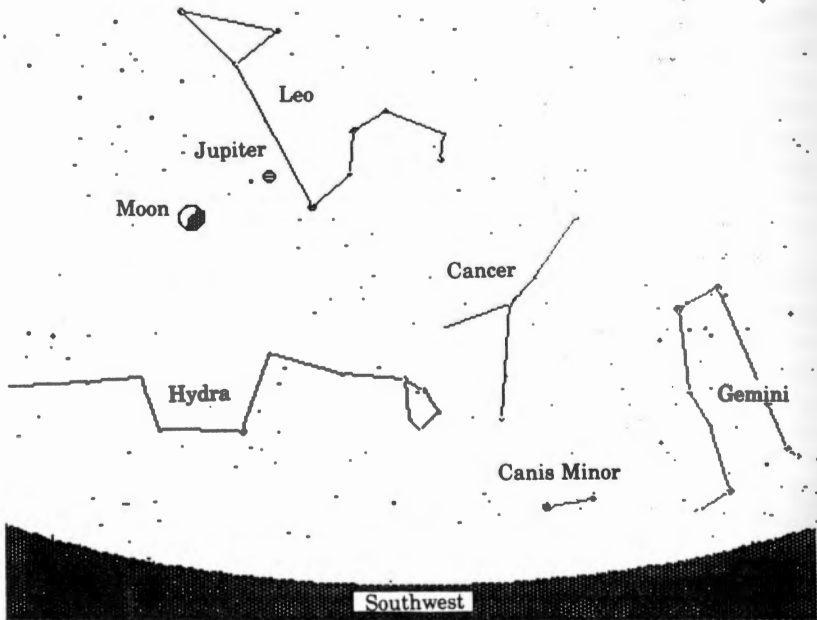


Figure 5
May 10, 1992
10:00 PM

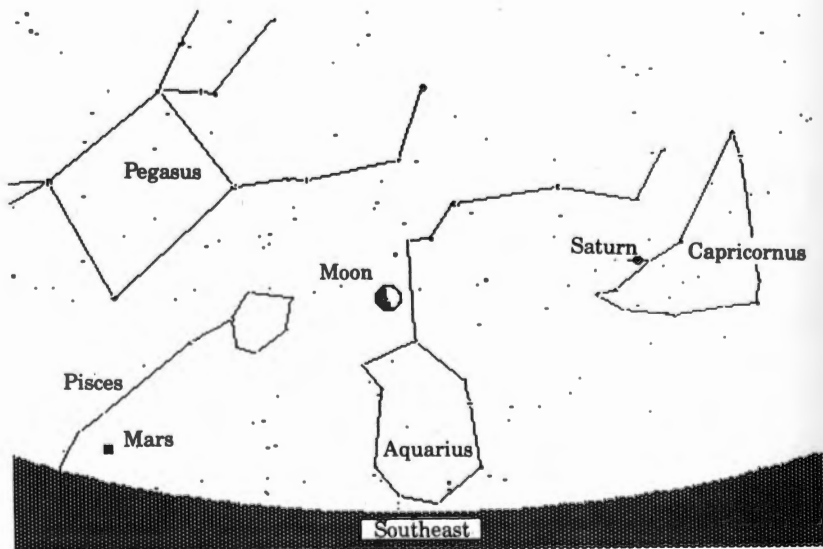


Figure 6
May 25, 1992
4:00 AM

Figure 5: On the night of May 10, the Moon and *Jupiter* are high in the southwest in the constellation *Leo*. The Moon is illuminated 67 percent. *Jupiter* is approximately 9° to the upper right of the Moon.

Figure 6: The Moon, *Saturn*, and *Mars* will be visible low in the southeast before sunrise on May 25. The Moon is illuminated 43 percent. *Saturn* is 25° to the right of the Moon. *Mars* is only about 5° above the horizon, approximately 33° to the left of the Moon. Binoculars may be necessary in order to view this planet. Sunrise is at 5:46 a.m.

Figure 7: On the night of June 5, the Moon is illuminated 30 percent. *Jupiter* is located in the constellation *Leo* approximately 16° above the Moon.

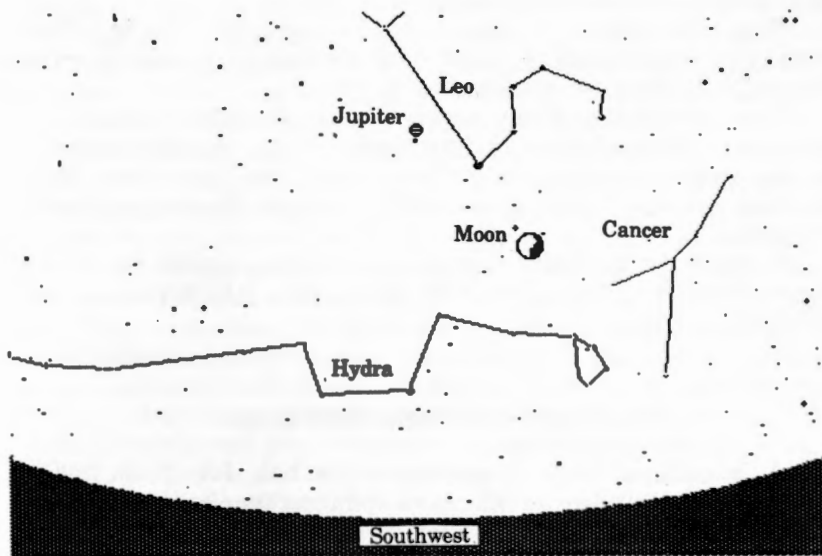


Figure 7
June 5, 1992
10:00 PM

Patrick Steven Leiker
Harvard-Smithsonian Center for Astrophysics
60 Garden Street
Cambridge, MA 02138