

2016

2016 UNI Panther Softball

University of Northern Iowa

Let us know how access to this document benefits you

Copyright ©2016 Athletics, University of Northern Iowa

Follow this and additional works at: <https://scholarworks.uni.edu/amg>



Part of the [Higher Education Commons](#)

Recommended Citation

University of Northern Iowa, "2016 UNI Panther Softball" (2016). *Athletics Media Guides*. 235.
<https://scholarworks.uni.edu/amg/235>

This Book is brought to you for free and open access by the Athletics at UNI ScholarWorks. It has been accepted for inclusion in Athletics Media Guides by an authorized administrator of UNI ScholarWorks. For more information, please contact scholarworks@uni.edu.

Offensive Materials Statement: Materials located in UNI ScholarWorks come from a broad range of sources and time periods. Some of these materials may contain offensive stereotypes, ideas, visuals, or language.



2016
UNI Panther
Softball

Quick Facts

General Information

Location.....Cedar Falls, Iowa
Founded.....1876
Enrollment.....11,928
Colors.....Purple and Old Gold
Nickname.....Panthers
Conference.....Missouri Valley
President.....Dr. Bill Ruud
Interim Athletic Director.....Jean Berger
Athletics Web Site.....www.unipanthers.com



UNISoftball

Coaches/Staff

Head Coach.....Ryan Jacobs
.....229-190 (112-85 MVC)
Hitting/Outfield Coach.....Matt Egger
Pitching/Recruiting Coordinator.....Julie Gerdes
Volunteer Assistant Coach.....TJ Matthews
Student Manager.....Erika Murphy
Athletic Trainer.....Matt Frericks
Strength Coach.....Eryca Hingtgen
Facilities and Operations.....Travis Kramer

Team Information

2015 Overall Record.....22-28
2015 MVC Record.....15-10 (3rd)
Home.....12-8
Road.....7-11
Neutral.....3-9
Starters Returning/Lost.....7/2
Softball Facility.....Robinson-Dresser Field

Athletic Communications

Assistant A.D. for Athletics Communications.....
.....Colin McDonough
Assistant Director.....Jordie Lindley
Assistant A.D. for New Media.....Michelle Van Dorn
Softball Contact.....Riley Ubben
.....ubbenr@uni.edu





2015 Roster

| No. | Name | Position | Height | Year | Hometown/High School |
|-----|--------------------|-----------|--------|-------|------------------------------------|
| 2 | Brittney Krodinger | SS/C/UTIL | 5-6 | Fr. | Festus, Mo./DeSoto |
| 3 | Courtney Krodinger | 3B/P/UTIL | 5-6 | Fr. | Festus, Mo./DeSoto |
| 4 | Macey Wolfe | OF | 5-6 | Jr. | Grimes, Iowa/Dallas Center-Grimes |
| 5 | Alicia Crivaro | IF | 5-5 | Jr. | Des Moines, Iowa/Dowling |
| 6 | Samantha Olson | OF | 5-6 | Sr. | Olathe, Kan./Olathe East |
| 8 | Brooke Craig | P/OF/1B | 5-11 | Fr. | Waterloo, Iowa/Columbus |
| 9 | Kate Kinnetz | IF | 5-5 | R-Fr. | Waterloo, Iowa/East |
| 10 | Bailey Lange | P/OF | 5-7 | Fr. | Sioux Falls, S.D./Washington |
| 11 | Kristin Lock | OF | 5-10 | Sr. | Lenexa, Kan./St. James Academy |
| 12 | Micalla Rettinger | OF | 5-10 | Sr. | Lenexa, Kan./Park Hill |
| 14 | Samantha Nicholson | IF | 5-6 | So. | Winterset, Iowa/Winterset |
| 15 | Anna Varriano | C | 5-5 | Jr. | Overland Park, Kan./Blue Valley |
| 20 | Samantha Belz | P | 6-0 | Sr. | Davenport, Iowa/West |
| 21 | Kennedy Bailey | IF | 5-7 | So. | Delta, BC Canada/Sands Secondary |
| 22 | Alyssa Buchanan | P | 5-11 | Jr. | Fisher, Ind./Hamilton Southeastern |
| 26 | Chelsea Ross | P/1B | 5-11 | Sr. | Kansas City, Mo./Liberty |
| 27 | Caitlin Wnek | IF | 5-4 | Sr. | Amana, Iowa/Cleer Creek Amana |

Roster Breakdown

Position

Infield (9)
Outfield (6)
Catcher (2)
Pitcher (6)

Class

Senior (6)
Junior (4)
Sophomore (2)
Freshman (5)

State

Iowa (7)
Missouri (3)
Kansas (4)
Indiana (1)
South Dakota (1)
Canada (1)

2015 Schedule

| Date | Time | Opponent | Location |
|------|-----------------|-----------------------------------|----------------------|
| | | Ramada UNI-Dome Classic | |
| 2-12 | 2:45 p.m. | Nebraska | Cedar Falls, Iowa |
| 2-12 | 7:15 p.m. | Saint Louis | Cedar Falls, Iowa |
| 2-13 | 7:15 p.m. | Green Bay | Cedar Falls, Iowa |
| 2-13 | 9 p.m. | South Dakota State | Cedar Falls, Iowa |
| 2-14 | 2:45 p.m. | South Dakota State | Cedar Falls, Iowa |
| 2-14 | 7:15 p.m. | Western Illinois | Cedar Falls, Iowa |
| | | Arizona State Tournament | |
| 2-19 | 11 a.m. | Montana | Tempe, Ariz. |
| 2-19 | 5:45 p.m. | Michigan State | Tempe, Ariz. |
| 2-20 | 5:45 p.m. | Michigan State | Tempe, Ariz. |
| 2-20 | 10:15 p.m. | Arizona State | Tempe, Ariz. |
| 2-21 | 1:15 p.m. | Memphis | Tempe Ariz. |
| | | Ole Miss Tournament | |
| 2-26 | 11:00 a.m. | UT-San Antonio | Oxford, Miss. |
| 2-26 | 4:00 p.m. | Ole Miss | Oxford, Miss. |
| 2-27 | 11:00 a.m. | Stephen F. Austin | Oxford, Miss. |
| 2-27 | 4:00/6:30 p.m. | TBD | Oxford, Miss. |
| 2-28 | 10:00 a.m./Noon | TBD | Oxford, Miss. |
| | | University of Arkansas Tournament | |
| 3-4 | 12:30 p.m. | Wright State | Fayetteville, Ark. |
| 3-4 | 5:30 p.m. | Arkansas | Fayetteville, Ark. |
| 3-5 | 12:30 p.m. | Buffalo | Fayetteville, Ark. |
| 3-5 | 5:30 p.m. | Arkansas | Fayetteville, Ark. |
| 3-6 | 10:00 a.m. | Buffalo | Fayetteville, Ark. |
| | | University of Kansas Tournament | |
| 3-11 | 9:00 a.m. | Nebraska-Omaha | Lawrence, Kan. |
| 3-11 | 11:30 a.m. | UMKC | Lawrence, Kan. |
| 3-12 | 9:00 a.m. | Missouri State | Lawrence, Kan. |
| 3-12 | 2:00 p.m. | Kansas | Lawrence, Kan. |
| 3-13 | 11:30 a.m. | Western Illinois | Lawrence, Kan. |
| 3-19 | 12:00 p.m. | Wichita State (DH)* | Wichita, Kan. |
| 3-20 | 12:00 p.m. | Wichita State* | Wichita, Kan. |
| 3-23 | 4:00 p.m. | Missouri | Cedar Falls, Iowa |
| 3-25 | 12:00 p.m. | Evansville (DH)* | Evansville, Ind. |
| 3-26 | 12:00 p.m. | Evansville* | Evansville, Ind. |
| 4-2 | 12:00 p.m. | Indiana State (DH)* | Cedar Falls, Iowa |
| 4-3 | 12:00 p.m. | Indiana State* | Cedar Falls, Iowa |
| 4-6 | 4:00 p.m. | Iowa State | Cedar Falls, Iowa |
| 4-9 | 12:00 p.m. | Bradley (DH)* | Peoria, Ill. |
| 4-10 | 12:00 p.m. | Bradley* | Peoria, Ill. |
| 4-12 | 4:00 p.m. | Iowa | Iowa City, Iowa |
| 4-16 | 12:00 p.m. | Loyola (DH)* | Cedar Falls, Iowa |
| 4-17 | 12:00 p.m. | Loyola* | Cedar Falls, Iowa |
| 4-19 | 4:00 p.m. | Drake (DH)* | Cedar Falls, Iowa |
| 4-23 | 12:00 p.m. | Missouri State (DH)* | Cedar Falls, Iowa |
| 4-24 | 12:00 p.m. | Missouri State* | Cedar Falls, Iowa |
| 4-26 | 4:00 p.m. | Nebraska-Omaha | Omaha, Neb. |
| 4-27 | 6:00 p.m. | Drake* | Des Moines, Iowa |
| 4-30 | 12:00 p.m. | Southern Illinois (DH)* | Carbondale, Ill. |
| 5-1 | 12:00 p.m. | Southern Illinois* | Carbondale, Ill. |
| 5-7 | 12:00 p.m. | Illinois State (DH)* | Cedar Falls, Iowa |
| 5-8 | 12:00 p.m. | Illinois State* | Cedar Falls, Iowa |
| 5-12 | TBD | MVC Tournament* | Carbondale, Ill. |
| 5-19 | TBD | NCAA Regional | TBD |
| 5-26 | TBD | NCAA Super Regional | TBD |
| 6-2 | TBD | NCAA Women's College World Series | Oklahoma City, Okla. |



Jacobs boasts an impressive 229-190 overall record and his team's have set or tied six single-season school records. He has coached 30 players to All-MVC honors and three MVC Newcomer of the Year recipients. The Panther softball team has been resurrected to become a legitimate conference contender year in and year out.

Last season, Jacobs and the Panthers made their seventh straight appearance in the Missouri Valley Conference

Tournament after finishing at 22-28 with a 15-10 conference record. On their way to finishing third in the conference, UNI grabbed no hit victories over Southern Illinois 8-0 at Robinson-Dresser Field and on the road at Loyola 11-0.

In 2014, UNI finished the year with a 28-20 record while four players earned All-MVC honors. On February 8, the Panthers defeated 10-ranked Texas 6-3 at the Louisiana-Lafayette Tournament. The UNI offense finished the season ranked in the top-25 nationally in two categories. The Panthers finished eighth in doubles per game with 1.60 per contest and 25th in home runs per game (1.08).

Jacobs helped coach former standout pitcher Jamie Fisher (2011-2014) into UNI's career record books. Fisher owns six career records including most wins (79), most career strikeouts (767), most complete games (97), most games started (126), most appearances (140) and lowest opponent batting average (.214). Fisher was named the 2012 MVC Pitcher of the Year while earning first-team all-MVC honors three times during her career at UNI.

The 2013 squad won the Missouri Valley Conference Tournament and advanced to the NCAA Tournament for only the second time in school history. They also captured the first-ever NCAA Tournament win in UNI's program history with a 2-1 win over the Tulsa Golden Hurricane.

In 2012, Jacobs led the Panthers to their third consecutive winning season along with the program's first outright MVC regular season championship after finishing with a 38-16 overall record and 21-5 in conference play. Coach Jacobs once again proved his ability to put an outstanding offense on the field as the team finished third in the conference in batting average and in the top tier of almost every major offensive category. The team outscored opponents by 133 runs on the season. Coach Jacobs and his staff proved they are a rising program in the Midwest as they went on a 15 game win-streak extending from March 14th until April 11th.

It didn't take long for Jacobs to make his imprint on the UNI softball program as he guided the Panthers to one of their best seasons in school history in just his second year coaching during the 2009 campaign as the Panthers finished with a 34-22 overall record and 15-11 in Missouri Valley Conference play. Coach Jacobs and his staff were named the MVC Coaching Staff of the Year in 2009, which marked only the second time a UNI coaching staff has earned that honor in school history.

In 2012, Jacobs and his staff orchestrated a 6-win improvement from last season, a 5 game improvement in Missouri Valley play, and coached the Panthers to the most conference wins (21) in school history. This first place regular-season championship was also the top Valley finish for the Panthers in program history.

Jacobs also led the Panthers back to the MVC Softball Tournament for the second year in a row in 2012. Jacobs guided the Panthers to a 15-0 start in MVC play, the first time in school history the Panthers got off to that start in league action.

Jacobs, known for his offensive mindset turned the Panthers into an offensive juggernaut in 2009 as the Panther set a new school record with 52 home runs in 2009, eclipsing the previous record of 42 homers set by the 2003 Panther softball team. The Panthers led the Valley in nearly every offensive category in 2009, which included batting average, slugging percentage, runs scored, hits, RBI, triples and home runs.

During his first year as head coach, Jacobs led the Panthers to a blistering 7-1 record to start the season before cooling off and finishing with a 20-28 overall record and a 5-16 conference mark. Jacobs also helped the Panthers improve their overall winning percentage from .373 (19-32 overall) in 2007 to .416 (20-28 overall) in 2008 and improve one spot in the Valley

standings.

The Panthers set a school record for team fielding percentage during Jacobs' first year after compiling a .971 fielding percentage, topping the previous school record of .961 set in 2001. Jacobs' squad only committed 41 errors, shattering the previous mark of 52 errors committed in a season back in 1998.

Jacobs served as the head softball coach at Cedar Falls High School from 2004 to 2007, guiding the Tigers to a 108-62-2 cumulative record. In 2007, the Tigers' squad finished with a 32-10 mark -- the second-best in school history -- and was ranked as high as fifth in Iowa's Class 4A. In Jacobs' tenure at CFHS, he guided six first-team All-Mississippi Valley Conference players, including one conference player of the year, five first-team all-district players and four all-state players.

After a season of playing professional baseball for the Richmond Roosters of the Frontier League and assistant baseball coaching stints at Cornell College and Cedar Rapids Xavier High School, Jacobs returned to Cedar Falls and UNI in 2001.

Jacobs is no stranger to Panther athletics.

The Cedar Rapids native played two seasons for UNI's baseball team, from 1997 to 1998, helping the Panthers to a then-school record 32 wins and second-place finish in the Missouri Valley Conference.

He served as an assistant coach on the Panther baseball staff, specializing in coaching the catchers and hitters. He also coordinated Panther camps and clinics and served as the team's first base coach. UNI recorded an average of 29 wins per season while Jacobs was on staff, including a school-record 35 victories and an NCAA tournament appearance in 2001.

Jacobs' coaching philosophy revolves around pushing players to their maximum potential and being able to outwork the opposing team. Jacobs looks to focus on playing the game "the right way" and hustling to outplay opponents.

Jacobs was a standout prep baseball player at Cedar Rapids Regis High School, being named both Mississippi Valley Conference Player of the Year and the Iowa Legion Player of the Year in 1994.

Jacobs and his wife, Kelley, reside in Cedar Falls with their two daughters, Haley and Emma.





Entering his fourth year as the UNI hitting and outfield coach, Matt Egger helped the Panthers tally a slugging percentage north of .400 for the second straight seasons while his team recorded 49 home runs.

Egger helped coach the Panther offense into a team that finished the 2014 season ranked top-25 nationally in two categories. UNI finished eighth nationally in doubles per game with 1.60 and 25th in home runs per game with 1.08 per contest.

"I am really excited to welcome Matt Egger to the Panther softball family," head

coach Ryan Jacobs said after Egger joined the UNI coaching staff on Oct. 10, 2012. "He brings a ton of energy and an endless work ethic. Matt has proven himself as a great leader, a strong recruiter and a positive role model for student-athletes. I am looking forward to bringing his knowledge, experience and positive energy to this UNI staff."

"I personally believe that within the past five years UNI softball has transformed itself into the premier softball program in the state of Iowa," Egger said. "I look forward to representing the University of Northern Iowa and what Coach Jacobs and his staff has built at all times - on and off the field."

Egger served as the head softball coach at Ellsworth Community College for the past three seasons. In those three seasons, Eggers had 19 players earn all-region honors and 17 players earn academic all-region status. He coached two NFCA All-Americans, one Academic All-American and an NJCAA All-American.

Egger began his coaching career in baseball. He served as a prep baseball coach in Webster City, Cedar Falls, Clear Lake and Rockwell-Swaledale. Egger also coached baseball at the collegiate level at North Iowa Area Community College.

Egger graduated from Webster City High School in 1996 as a three-sport all-state athlete in football, wrestling and baseball. Egger graduated from Cornell College in 2000 with a double major in sociology and physical education. He competed in football, wrestling and baseball at Cornell College.

He has three children (Chelsea, Reis and Alek).



Former University of Northern Iowa standout pitcher Julie Gerdes is in her eighth season as the pitching coach and recruiting coordinator for the Panther softball squad.

In 2015, Gerdes saw pitcher Chelsea Ross set a new career-high for strikeouts in a season (193) while tallying two no-hit performances against Southern Illinois and Loyola.

Gerdes has overseen the talents of former standout pitcher Jamie Fisher (2011-14), who owns six career records at UNI. Fisher holds the records for most career wins (79), most complete games (97), most career strikeouts (767), lowest opponent batting average (.214), most appearances (140), most games started (126) and second all-time with 21 shutouts. Fisher was named the 2012 MVC Pitcher of the Year while earning first-team all-MVC honors three times and second-team all-MVC one time.

Gerdes came to the Panther staff after serving as the pitching coach at Wartburg College from 2005-07 and also assisting head coach Ryan Jacobs at Cedar Falls High School from 2004-07.

As an assistant coach at Wartburg, Gerdes helped lead the Knights to a combined 102-23 record and two Iowa Intercollegiate Athletic Conference tournament championships, including a 2006 IAC regular season title.

Not only did Gerdes assist with pitching at Wartburg from 2005-2007; she also helped Jacobs with pitching duties at Cedar Falls High School. Gerdes helped lead the Tigers to a 32-10 mark in 2007 and was ranked as high as fifth in Iowa's Class 4A.

A 2000 graduate of Burlington High School, Gerdes began her collegiate softball career at Kirkwood Community College where she earned NJCAA Region XI first team honors from the National Fastpitch Coaches Association and also National Coaches Association-Louisville Slugger All-American first team. Gerdes pitching record at Kirkwood was an impressive 41-10 over two seasons, helping Kirkwood to an 84-29 team record.

Following her career at Kirkwood; Gerdes joined the Panther pitching staff and tallied a 12-6 pitching record in her first season. She threw over 100 innings in each of her years as a Panther, and posted 17 complete games, including 12 in her junior season. Gerdes graduated from UNI in 2005 with a degree in mathematics and taught at Cedar Falls High School from 2005-2007.

Gerdes coaching efforts with the Panthers Pitching staff has been an impressive turn around prior to her arrival at UNI. Gerdes improved the pitching staff's season earned run average over an entire run in her first season at UNI bringing the Panthers down from a 4.05 earned run average in 2008, to just a 2.80 in 2009. In her last four seasons with the Panthers her squad averages just a 2.72 earned run average; a vast improvement from the previous four-year period averaging 4.20 earned runs per game.

She has also found success through the years in her recruiting efforts. As recruiting coordinator, Gerdes has recruited and brought in much of the talent that has led to part of the success the Panthers's program has put together and experienced the past few seasons keeping the Panthers a legitimate contender atop the Missouri Valley Conference year after year.



2015 Overall Statistics

• Record: 22-28 • Home: 12-8 • Away: 7-12 • Neutral: 3-8 • Conference: 15-10 •

| Player | avg | gp-gs | ab | r | h | 2b | 3b | hr | rbi | tb | slg% | bb | hbp | so | gdp | ob% | sf | sh | sb-att | po | a | e | fld% |
|-------------------------------------|------|-------|------|-----|-----|----|----|----|-----|-----|------|-----|-----|-----|-----|------|----|----|--------|-----|-----|----|-------|
| Alceraz, Rikki | .329 | 48-48 | 152 | 32 | 50 | 9 | 0 | 10 | 23 | 89 | .586 | 17 | 2 | 26 | 0 | .399 | 2 | 0 | 7-7 | 51 | 108 | 10 | .941 |
| Wnee, Caitlin | .296 | 50-50 | 162 | 35 | 48 | 12 | 0 | 5 | 17 | 75 | .453 | 22 | 2 | 8 | 0 | .383 | 2 | 1 | 9-10 | 81 | 93 | 11 | .941 |
| Beiley, Kennedy | .293 | 47-46 | 123 | 23 | 36 | 6 | 1 | 8 | 36 | 68 | .553 | 22 | 4 | 21 | 0 | .408 | 3 | 2 | 3-3 | 272 | 16 | 9 | .970 |
| Wolfe, Macey | .277 | 38-32 | 94 | 15 | 26 | 7 | 0 | 4 | 18 | 45 | .479 | 10 | 0 | 21 | 0 | .346 | 0 | 2 | 3-4 | 2 | 0 | 0 | 1.000 |
| Lock, Kristin | .271 | 49-48 | 140 | 30 | 38 | 9 | 0 | 6 | 19 | 65 | .464 | 16 | 7 | 30 | 0 | .372 | 1 | 2 | 6-7 | 56 | 5 | 6 | .910 |
| Ross, Chelsea | .271 | 43-41 | 107 | 15 | 29 | 4 | 0 | 8 | 28 | 57 | .533 | 22 | 3 | 20 | 0 | .403 | 2 | 2 | 0-0 | 7 | 19 | 1 | .953 |
| Hunter, Julia | .266 | 48-48 | 125 | 14 | 32 | 3 | 1 | 3 | 21 | 46 | .388 | 17 | 1 | 24 | 0 | .350 | 0 | 1 | 5-5 | 116 | 80 | 6 | .970 |
| Rettinger, Micella | .261 | 50-50 | 171 | 22 | 43 | 7 | 3 | 1 | 17 | 99 | .345 | 7 | 0 | 21 | 0 | .281 | 0 | 3 | 3-4 | 62 | 1 | 1 | .984 |
| Olson, Samantha | .238 | 46-39 | 101 | 11 | 24 | 0 | 0 | 0 | 5 | 24 | .238 | 1 | 0 | 25 | 0 | .245 | 0 | 7 | 12-14 | 30 | 7 | 1 | .974 |
| Buchanan, Alyssa | .231 | 16-9 | 26 | 2 | 6 | 2 | 0 | 1 | 6 | 11 | .423 | 1 | 0 | 1 | 0 | .259 | 0 | 0 | 0-0 | 7 | 23 | 13 | .898 |
| Martin, Micharia | .176 | 30-15 | 34 | 12 | 6 | 1 | 0 | 0 | 3 | 7 | .206 | 5 | 0 | 6 | 0 | .282 | 0 | 5 | 4-4 | 8 | 1 | 4 | .692 |
| Vamano, Anna | .172 | 50-50 | 58 | 8 | 10 | 1 | 0 | 2 | 7 | 17 | .293 | 4 | 0 | 16 | 0 | .222 | 1 | 0 | 1-1 | 249 | 28 | 3 | .989 |
| Nicholson, Samantha | .125 | 12-4 | 16 | 2 | 2 | 0 | 0 | 1 | 4 | 5 | .313 | 3 | 2 | 7 | 0 | .333 | 0 | 1 | 0-0 | 6 | 10 | 1 | .941 |
| Koerperich, Hailey | .000 | 15-7 | 3 | 0 | 0 | 0 | 0 | 0 | 0 | 0 | .000 | 0 | 0 | 3 | 0 | .000 | 0 | 0 | 0-0 | 30 | 5 | 2 | .946 |
| Hland, Aubrey | .000 | 3-0 | 3 | 0 | 0 | 0 | 0 | 0 | 0 | 0 | .000 | 0 | 0 | 1 | 0 | .000 | 0 | 0 | 0-0 | 0 | 0 | 0 | .000 |
| Sedlacek, Rachel | .000 | 7-1 | 2 | 1 | 0 | 0 | 0 | 0 | 0 | 0 | .000 | 1 | 0 | 2 | 0 | .333 | 0 | 0 | 0-0 | 0 | 0 | 0 | .000 |
| Koerperich, Hope | .000 | 2-0 | 1 | 0 | 0 | 0 | 0 | 0 | 0 | 0 | .000 | 0 | 0 | 1 | 0 | .000 | 0 | 0 | 0-0 | 0 | 0 | 0 | .000 |
| Belz, Samantha | .000 | 1-1 | 0 | 0 | 0 | 0 | 0 | 0 | 0 | 0 | .000 | 0 | 0 | 0 | 0 | .000 | 0 | 0 | 0-0 | 1 | 6 | 0 | 1.000 |
| Forsyth, Mara | .000 | 2-2 | 0 | 0 | 0 | 0 | 0 | 0 | 0 | 0 | .000 | 0 | 0 | 0 | 0 | .000 | 0 | 0 | 0-0 | 0 | 0 | 0 | .000 |
| Totals | .266 | 50-50 | 1318 | 222 | 350 | 61 | 5 | 49 | 204 | 568 | .431 | 148 | 21 | 233 | 0 | .346 | 11 | 26 | 53-59 | 978 | 402 | 68 | .953 |
| Opponents | .287 | 50-50 | 1321 | 240 | 379 | 58 | 5 | 42 | 209 | 573 | .434 | 123 | 25 | 237 | 5 | .357 | 9 | 49 | 41-51 | 987 | 366 | 56 | .950 |

(All games Sorted by Earned run avg)

| Player | era | w-l | app-gs | cg | sho | sv | ip | h | r | er | bb | so | 2b | 3b | hr | ab | b/avg | wp | hbp | bk | sfa | sha |
|------------------------------------|-------|-------|--------|----|-----|----|-------|-----|-----|-----|-----|-----|----|----|----|------|-------|----|-----|----|-----|-----|
| Ross, Chelsea | 3.56 | 18-16 | 34-32 | 24 | 6/0 | 0 | 196.2 | 199 | 116 | 100 | 74 | 193 | 33 | 4 | 29 | 768 | .259 | 27 | 10 | 0 | 4 | 24 |
| Buchanan, Alyssa | 4.10 | 4-9 | 24-16 | 5 | 0/0 | 0 | 97.1 | 127 | 84 | 57 | 29 | 32 | 13 | 1 | 9 | 411 | .309 | 1 | 13 | 0 | 4 | 17 |
| Belz, Samantha | 6.83 | 0-3 | 12-2 | 0 | 0/0 | 0 | 27.2 | 44 | 30 | 27 | 16 | 11 | 10 | 0 | 3 | 120 | .367 | 2 | 2 | 0 | 1 | 5 |
| Koerperich, Hailey | 11.31 | 0-0 | 4-0 | 0 | 0/0 | 0 | 4.1 | 9 | 10 | 7 | 4 | 1 | 2 | 0 | 1 | 22 | .409 | 5 | 0 | 0 | 0 | 3 |
| Totals | 4.10 | 22-28 | 50-50 | 29 | 6/0 | 0 | 326.0 | 379 | 240 | 191 | 123 | 237 | 58 | 5 | 42 | 1321 | .287 | 35 | 25 | 0 | 9 | 49 |
| Opponents | 3.98 | 28-22 | 50-50 | 25 | 3/2 | 3 | 329.0 | 350 | 222 | 187 | 148 | 233 | 61 | 5 | 49 | 1318 | .266 | 20 | 21 | 3 | 11 | 26 |

PB - Team (8), Varriano, A. 8, Opp (10). Pickoffs - Team (2), Varriano, A. 2. SBA/ATT - Varriano, A. (41-50), Ross, C. (24-30), Buchanan, A. (15-17), Belz, S. (1-3), KoerperichHa (1-1).

Record when team scores:

| Runs | 0 | 1 | 2 | 3 | 4 | 5 | 6 | 7 | 8 | 9 | 10+ |
|------|-----|-----|-----|-----|-----|-----|-----|-----|-----|-----|-----|
| W-L | 0-3 | 0-6 | 1-5 | 4-5 | 3-6 | 2-1 | 1-1 | 2-0 | 4-0 | 2-1 | 3-0 |

Record when opponent scores:

| Runs | 0 | 1 | 2 | 3 | 4 | 5 | 6 | 7 | 8 | 9 | 10+ |
|------|-----|-----|-----|-----|-----|-----|-----|-----|-----|-----|-----|
| W-L | 6-0 | 6-1 | 2-1 | 3-2 | 1-5 | 0-3 | 1-3 | 1-3 | 1-3 | 0-0 | 1-7 |

Record when leading after:

| Inning | 1 | 2 | 3 | 4 | 5 | 6 |
|--------|-----|------|------|------|------|------|
| W-L | 7-7 | 12-7 | 14-5 | 17-3 | 15-1 | 12-0 |

Record when trailing after:

| Inning | 1 | 2 | 3 | 4 | 5 | 6 |
|--------|-----|------|------|------|------|------|
| W-L | 1-8 | 2-13 | 3-17 | 2-19 | 2-21 | 3-21 |

Record when tied after:

| Inning | 1 | 2 | 3 | 4 | 5 | 6 |
|--------|-------|-----|-----|-----|-----|-----|
| W-L | 14-13 | 8-8 | 5-6 | 3-6 | 2-3 | 1-3 |

Won-loss streaks:

Current losing streak 2
Longest winning streak 5
Longest losing streak 6

2015 Statistics

(All games Sorted by Fielding pct)

| Player | c | po | a | e | fld% | dp | sba | csb | sba% | pb | cl |
|--------------------|------|-----|-----|----|-------|----|-----|-----|-------|----|----|
| Belz,Samantha | 7 | 1 | 6 | 0 | 1.000 | 0 | 1 | 2 | .333 | 0 | 0 |
| Wolfe, Macey | 2 | 2 | 0 | 0 | 1.000 | 0 | 0 | 0 | --- | 0 | 0 |
| Varriano,Anna | 280 | 249 | 28 | 3 | .989 | 1 | 41 | 9 | .820 | 8 | 0 |
| Rettinger,Micalla | 64 | 62 | 1 | 1 | .984 | 0 | 0 | 0 | --- | 0 | 0 |
| Olson,Samantha | 38 | 30 | 7 | 1 | .974 | 1 | 0 | 0 | --- | 0 | 0 |
| Hunter,Julia | 202 | 116 | 80 | 6 | .970 | 6 | 0 | 0 | --- | 0 | 0 |
| Bailey,Kennedy | 297 | 272 | 16 | 9 | .970 | 11 | 0 | 0 | --- | 0 | 0 |
| Ross,Chelsea | 27 | 7 | 19 | 1 | .963 | 2 | 24 | 6 | .800 | 0 | 0 |
| Koerperich,Hailey | 37 | 30 | 5 | 2 | .946 | 1 | 1 | 0 | 1.000 | 0 | 0 |
| Nicholson,Samantha | 17 | 6 | 10 | 1 | .941 | 0 | 0 | 0 | --- | 0 | 0 |
| Alcaraz,Rikki | 169 | 51 | 108 | 10 | .941 | 4 | 0 | 0 | --- | 0 | 0 |
| Wnek,Caitlin | 185 | 81 | 93 | 11 | .941 | 9 | 0 | 0 | --- | 0 | 0 |
| Lock,Kristin | 67 | 56 | 5 | 6 | .910 | 0 | 0 | 0 | --- | 0 | 0 |
| Buchanan,Alyssa | 43 | 7 | 23 | 13 | .698 | 1 | 15 | 2 | .882 | 0 | 0 |
| Martin,Michaela | 13 | 8 | 1 | 4 | .692 | 0 | 0 | 0 | --- | 0 | 0 |
| Forsyth,Mara | 0 | 0 | 0 | 0 | .000 | 0 | 0 | 0 | --- | 0 | 0 |
| Bland,Aubrey | 0 | 0 | 0 | 0 | .000 | 0 | 0 | 0 | --- | 0 | 0 |
| Koerperich,Hope | 0 | 0 | 0 | 0 | .000 | 0 | 0 | 0 | --- | 0 | 0 |
| Sedlacek,Rachel | 0 | 0 | 0 | 0 | .000 | 0 | 0 | 0 | --- | 0 | 0 |
| Totals | 1448 | 978 | 402 | 68 | .953 | 14 | 41 | 10 | .804 | 8 | 0 |
| Opponents | 1409 | 987 | 366 | 56 | .960 | 12 | 53 | 6 | .898 | 10 | 1 |

| Inning-by-inning | 1 | 2 | 3 | 4 | 5 | 6 | 7 | 8 | 9 | EX | Total |
|------------------|----|----|----|----|----|----|----|---|---|----|-------|
| UNI | 42 | 24 | 25 | 33 | 31 | 37 | 29 | 0 | 1 | 0 | 222 |
| Opponents | 26 | 24 | 37 | 41 | 44 | 45 | 22 | 0 | 0 | 1 | 240 |

Win-Loss record when ...

| | | | |
|----------------------|-------|----------------------|-------|
| Overall | 22-28 | After 4 leading | 17-3 |
| Conference | 15-10 | ... trailing | 2-19 |
| Non-Conference | 7-18 | ... tied | 3-6 |
| Home games | 12-8 | After 5 leading | 15-1 |
| Away games | 7-12 | ... trailing | 2-21 |
| Neutral site | 3-8 | ... tied | 2-3 |
| Day games | 22-26 | After 6 leading | 12-0 |
| Night games | 0-2 | ... trailing | 3-21 |
| vs Left starter | 3-4 | ... tied | 1-3 |
| vs Right starter | 19-24 | | |
| 1-Run games | 6-6 | Hit 0 home runs | 5-16 |
| 2-Run games | 5-5 | ... 1 home run | 6-9 |
| 5+Run games | 8-9 | ... 2+ home runs | 11-3 |
| Extra Innings | 1-1 | | |
| Shutouts | 6-3 | Opponent 0 home runs | 13-13 |
| | | ... 1 home run | 6-6 |
| Scoring 0-2 runs | 1-14 | ... 2+ HRs | 3-9 |
| ... 3-5 runs | 9-12 | | |
| ... 6-9 runs | 9-2 | Made 0 errors | 12-7 |
| ... 10+ runs | 3-0 | ... 1 error | 2-6 |
| | | ... 2+ errors | 8-15 |
| Opponent 0-2 runs | 14-2 | | |
| ... 3-5 runs | 4-10 | Opp. made 0 errors | 6-10 |
| ... 6-9 runs | 3-9 | ... 1 error | 8-9 |
| ... 10+ runs | 1-7 | ... 2+ errors | 8-9 |
| Scored in 1st inning | 7-10 | Out-hit opponent | 16-2 |
| Opp. scored in 1st | 2-10 | Out-hit by opponent | 2-23 |
| Scores first | 15-11 | Hits are tied | 4-3 |
| Opp. scores first | 7-17 | | |

Meet the Panthers



2015: First-team All-MVC honoree... named MVC Pitcher of the Week three times... honored as the MVC Player of the Week (5/4)... tossed her first career no-hitter in an 11-0 win over Loyola (3/21)... threw her second no-hitter of the season in an 8-0 win over Southern Illinois (3/28)... recorded six shutout wins in the circle... earned two one-hit victories... struck out a career-high 11 batters in a win over Drake (4/14)... set a new career-high for strikeouts in

a season with 193... batted .271 at the plate while recording a .533 slugging percentage... tallied a team-high .347 batting average in conference play.

2014: Second-team All-MVC selection... appeared in 47 games... made 26 appearances as a pitcher while starting 18 games... tallied a 11-6 record on the mound with a 3.46 ERA... recorded 123 strikeouts in 129.1 innings... struck out 10 batters in seven innings during a 5-2 win against Indiana State (4/ 5)... hit a team-high nine home runs while driving in 27 runs... recorded a .957 fielding percentage... drove in five runs on two hits in a 7-3 win over Evansville (3/29).

High School: Ross was named the Kansas City Metro Player of the Year as a prep pitcher.

As a high school senior, Ross tallied 18 wins and a 0.73 earned run average. She also earned first-team all-state, all-conference, all-district and all-region honors as a senior. Ross earned second-team all-state honors as a sophomore. She was a four-time all-conference, all-district and all-metro selection and was a three-time all-region choice.



Career-Highs

Hits Allowed - 0 vs. Loyola (3/21), SIU (3/28)

Strikeouts in a game - 11 vs. Drake (4/14)

Runs Batted In - 28 (2015)

Hits - 29 (2014, 2015)

Slugging Percentage - .533 (2015)

Strikeouts in a season - 193 (2015)

Wins - 18 (2015)

Complete Games - 24 (2015)

Games Started - 32 (2015)

Earned Run Average - 3.46 (2014)

Innings Tossed - 196.2 (2015)

Accolades

2015: First-team All-MVC

MVC Pitcher of the Week (3x)

MVC Player of the Week (5/4)

2014: Second-team All-MVC

2015: Named second-team All-MVC for the second straight season... posted a .296 batting average... recorded a team-high doubles with 12... struck out just eight times batting from the leadoff spot... batted .329 in MVC play with 11 RBI... tied the team-high in walks with 22... scored a team-leading 35 runs... drove in 17 runs on 48 hits... went a perfect 4-4 at the plate while scoring four runs in a 15-11 win over Green Bay (2/7).



2014: Second-team All-MVC selection... scored a team-high 32 runs... named to the MVC Scholar-Athlete Team... batted .307 while driving in 26 runs... appeared and started at shortstop in all 48 games... tied the team-high in hits with 50... posted a .917 fielding percentage... hit six home runs... went 3-for-3 with a double and a home run against Loyola (5/3).

2013: Named Co-Newcomer of the Year in the Missouri Valley Conference ... led the team with 47 hits ... batted .290 with 26 runs, 14 doubles, three home runs and 17 RBI ... started all 53 games at shortstop as a true freshman ... tied for the team lead with 12 multi-hit games ... tallied four multi-RBI games as well ... ranked No. 48 amongst the toughest batters to strikeout in the nation in NCAA Division I softball ... struck out only 10 times in 162 at-bats ... went 4-for-4 with two runs and two doubles in UNI's 8-1 win over Indiana State (4/21) ... scored the Panthers' first run of the NCAA Regional in UNI's 2-1 win over Tulsa (5/18).

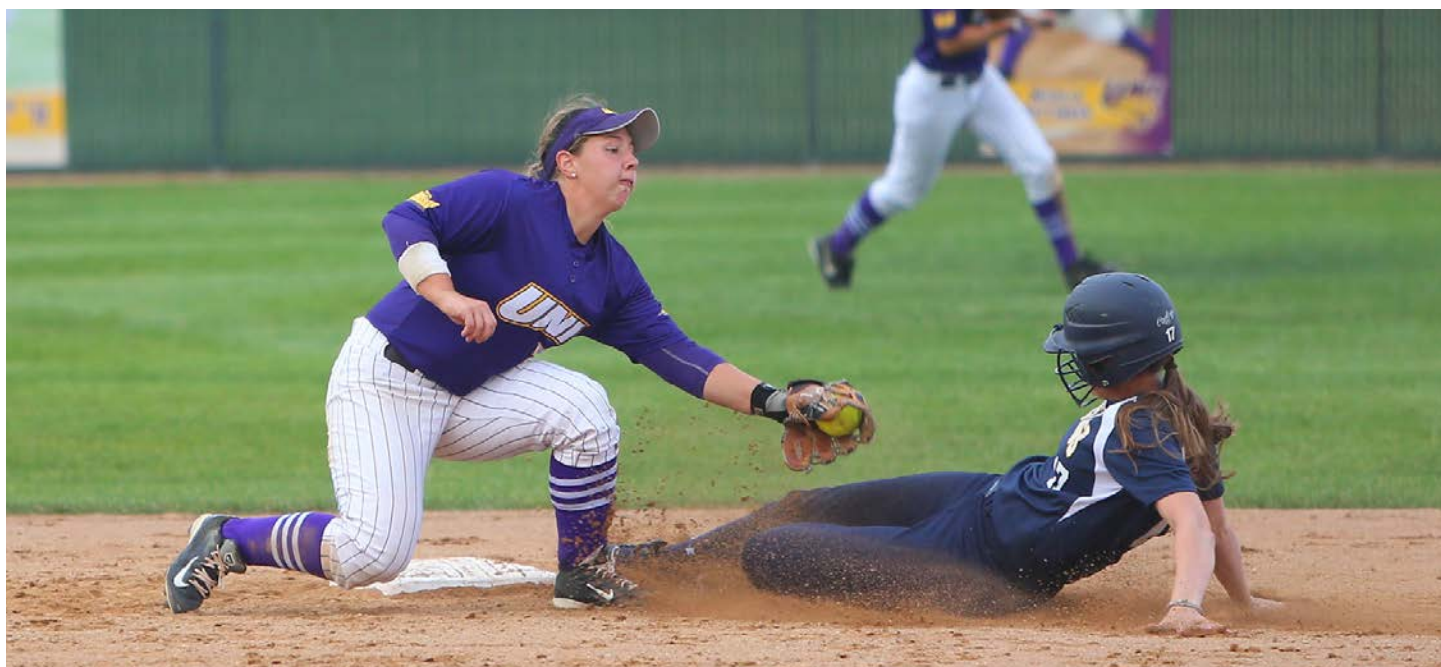
High School: A five-year varsity letter recipient ... earned all-conference as well as all-state honors in class 3A and 4A from 2009-2012. also was her class Valedictorian maintaining a 4.0 GPA throughout high school ... a member of National Honor Society.

Accolades

2015: Second-team All-MVC
2014: Second-team All-MVC
2013: MVC Co-Newcomer of the Year

Career-Highs

Batting Average - .307 (2014)
Hits - 50 (2014)
Doubles - 14 (2013)





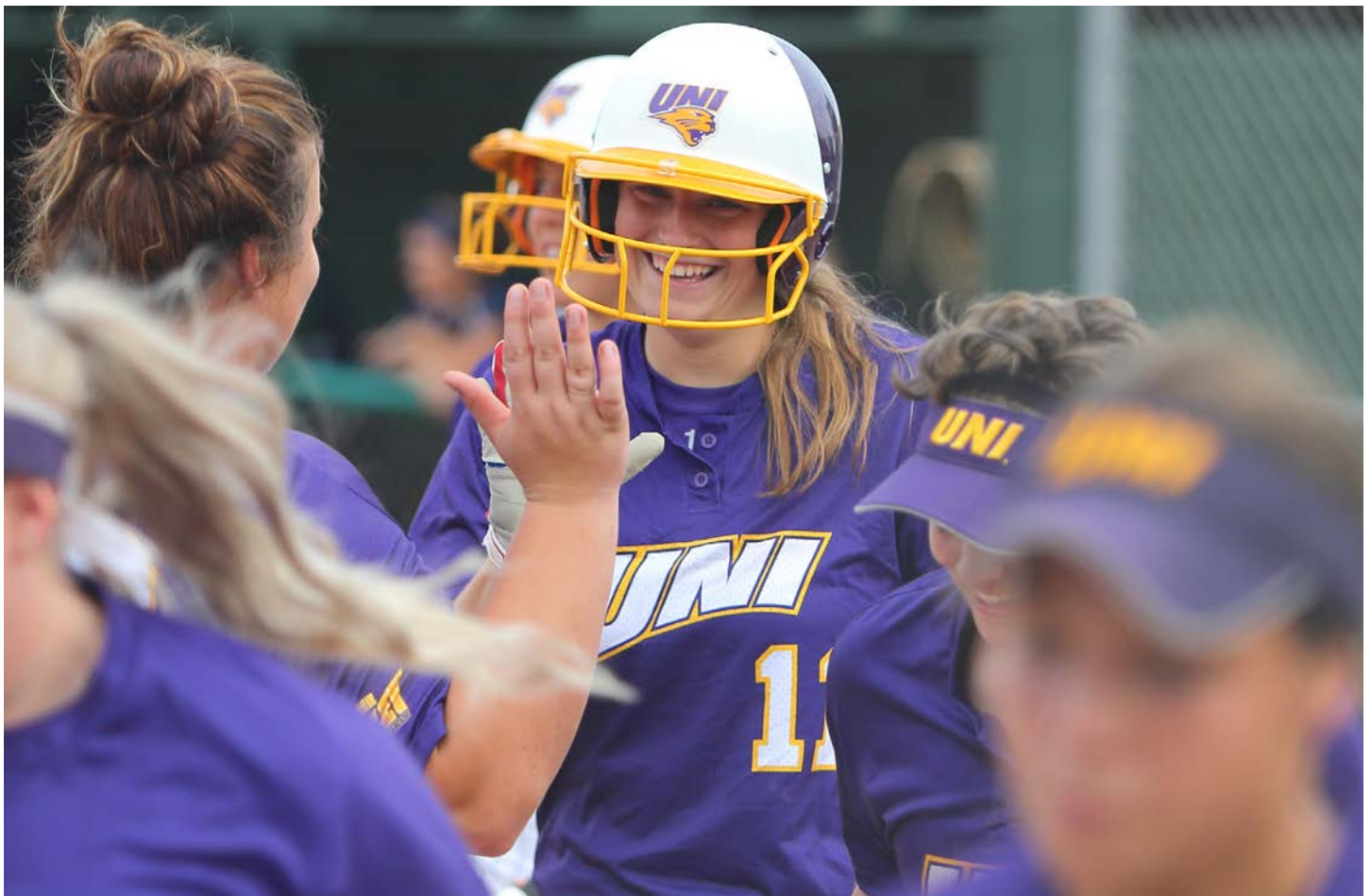
2015: Batted .271 while starting 48 games as an outfielder and designated player... scored 30 runs while driving in 19... hit six home runs... homered in back-to-back games at the Houston Hilton Plaza Invitational (2/13-2/15)... tallied three RBI while hitting a home run in a 5-1 win over Bradley (4/11).

2014: Appeared in 47 games while starting 45 games in the outfield... batted .278 while driving in 18 runs... hit six

home runs and nine doubles... hit a home run and drove in three runs in a 6-3 win against 10-ranked Texas (2/8).

2013: Started all 53 games as a true freshman ... had 28 starts in left field, 23 starts in right field and two starts at the designated player slot ... tallied her first hit in her collegiate debut against No. 1-ranked Alabama (2/8) ... had the team's second-longest hitting streak of the season (nine games) from April 13-April 27 ... led the team with 14 stolen bases ... tied for team-high honors with 12 multi-hit games ... ranked second on the team with a .307 batting average ... came through in the clutch in the MVC Championship game as she singled in two runs with two outs and two strikes with the Panthers' trailing Evansville, 1-0, in the bottom of the sixth ... UNI won the game, 2-1, and advanced to the NCAA Tournament.

High School: A shortstop from from St. James Academy (Thunder) of Lenexa, Kan. ... a two-year varsity letter recipient in basketball as well as a four-year recipient in softball ... she was no stranger to awards earning honors in several categories; 1st Team Kansas 4A All-State in 2010 and 2011, 1st Team All-Sun County in 2010 and 2011, 2nd Team All-Metro Kansas City in 2010, 1st Team All-Metro Kansas City in 2011, as well as Kansas All Star Team-MO-KAN All Star Softball Series in 2012 ... her most memorable moment in high school was hitting her first home run.



2015: Batted .251 with a team-high three triples... one of three Panthers to start all 50 games... tallied 43 hits while driving in 17 runs... batted .316 in MVC play with 14 RBI... recorded 12 multi-hit games... went 3-4 while scoring two runs in an 8-7 win over Evansville (4/18).

2014: Appeared in 47 games while starting 46 games in the outfield and one game as a designated hitter... record-

ed an on-base percentage of .356 while batting .223... hit eight doubles and drove in 18 runs... recorded a team-high 23 walks... hit two home runs and drove in five runs in a 9-1 win over Missouri State (4/18).

2013: Appeared in 51 games and drew 50 starts as a true freshman ... she started 50 games in centerfield and had another start as the designated player ... led the team in hitting with a .317 batting average ... ranked second on the squad in slugging percentage (.453) ... ranked third on the team with 44 hits ... tallied 10 multi-hit games to rank third on the squad in that category ... tied for third on the squad with four home runs ... went 2-for-4 with three runs and three RBI in an 8-2 win over Green Bay (2/9) in the UNI-Dome Classic ... tallied a season-high four RBI in a 9-1 victory over Santa Clara (3/9) ... went 3-for-3 vs. Stanford (5/18) in the NCAA Regional in Lincoln, Neb.

High School: A four year letter recipient in softball, Micalla also earned three letters in basketball. Micalla earned a number of honors throughout her softball career including four All-District teams, three of which were first team honors, a trio of first team All-District honors, and second team All-State honor following her senior season. Micalla's favorite high school memory was winning their teams memorial day tournament when she was a freshmen.





2015: Stole a team-high 12 bases... lead the Panthers in sacrifices with seven while tallying a .238 batting average... swiped two bases against Drake at the UNI-Dome Classic (2/8)... went 2-2 while scoring two runs in a 9-1 win over Indiana State (5/2).

2014: Appeared in 47 games as a pinch runner and an outfielder... stole a team-high 16 bases on 16 attempts... batted .258 in 66 plate appearances... scored

17 runs... went 3-for-3 with three stolen bases in a 9-0 win over Iowa State (4/2).

2013: Saw action in 44 games and drew 35 starts ... she started 24 games in left field, five games at designated player, three games at first base and three games in center field ... tallied 16 hits and scored 10 runs ... ranked third on the team with six stolen bases ... went 2-for-3 with a run and an RBI in a 3-2 win over Wichita State (4/13) ... scored the go-ahead run on a bases loaded walk in UNI's 2-1 win over Tulsa (5/18) in the NCAA Regional in Lincoln, Neb. ... gunned down the potential go-ahead run for the Golden Hurricane with an outfield assist at home plate in the top of the fourth after Tulsa had tied the game at 1-1 on a single to left field.

High School: A four-year varsity letter recipient in softball, she also earned a pair of letters in volleyball through her high school career ... she earned a number of honors through her career; All-Conference recipient from 2009-2012, All-Region recipient from 2010-2012, and All-State from 2010-2012 ... her most memorable moments through high school were all the friends she made throughout her career.



2015: Appeared in 12 games while starting two in the circle... tossed 27.2 innings while striking out 11 batters... allowed no runs while striking out three batters in five innings of work against Drake (4/14)... made a relief appearance against Missouri State (4/25), allowing one run over a six inning span.

At Kirkwood: Belz was named second-team All-America by the National Fastpitch Coaches Association in

2013: First team all-region honoree.

High School: Belz was named second-team all-Mississippi Athletic Conference in 2012... five-year varsity letter winner at West High School in Davenport... all-Metro second-team.



#20 Belz, Samantha - 12 appearances (All games)

| Date | Opponent | GS | IP | H | R | ER | BB | SO | 2B | 3B | HR | WP | BK | HBP | IBB | Score | W-L | Sv | ERA | NP |
|--------|-----------------------|----|------|----|----|----|----|----|----|----|----|----|----|-----|-----|-------|-----|----|-------|----|
| Feb 06 | SOUTHERN UTAH | | 3.1 | 1 | 1 | 1 | 3 | 0 | 0 | 0 | 0 | 0 | 0 | 0 | 0 | 7-6 | 0-0 | 0 | 2.10 | 62 |
| Feb 07 | WISCONSIN-GREEN B | * | 3.0 | 8 | 3 | 3 | 0 | 2 | 2 | 0 | 0 | 0 | 0 | 0 | 0 | 15-11 | 0-0 | 0 | 4.42 | 32 |
| Feb 08 | DRAKE | * | 3.0 | 4 | 5 | 4 | 1 | 1 | 0 | 0 | 1 | 0 | 0 | 0 | 0 | 1-7 | 0-1 | 0 | 6.00 | 58 |
| Feb 27 | at Columbia | | 0.0 | 1 | 0 | 0 | 0 | 0 | 0 | 0 | 0 | 0 | 0 | 0 | 0 | 3-4 | 0-1 | 0 | 6.00 | - |
| Mar 01 | vs Maryland | | 1.0 | 4 | 3 | 3 | 0 | 1 | 1 | 0 | 0 | 0 | 0 | 1 | 0 | 0-10 | 0-1 | 0 | 7.45 | 31 |
| Mar 06 | vs North Dakota State | | 1.0 | 4 | 6 | 6 | 3 | 1 | 1 | 0 | 0 | 1 | 0 | 0 | 0 | 4-12 | 0-1 | 0 | 10.50 | 40 |
| Mar 07 | vs Indiana State | | 2.0 | 4 | 2 | 2 | 1 | 2 | 2 | 0 | 0 | 0 | 0 | 1 | 0 | 1-7 | 0-1 | 0 | 9.98 | 42 |
| Apr 11 | BRADLEY-2 | | 2.0 | 0 | 0 | 0 | 1 | 0 | 0 | 0 | 0 | 0 | 0 | 0 | 0 | 3-7 | 0-1 | 0 | 8.67 | 34 |
| Apr 14 | at Drake-2 | | 5.0 | 5 | 0 | 0 | 1 | 3 | 2 | 0 | 0 | 0 | 0 | 0 | 0 | 2-6 | 0-1 | 0 | 6.54 | - |
| Apr 18 | at Evansville | | 0.2 | 2 | 3 | 1 | 0 | 0 | 1 | 0 | 0 | 1 | 0 | 0 | 0 | 8-7 | 0-1 | 0 | 6.67 | 17 |
| Apr 25 | at Missouri State-2 | | 6.0 | 6 | 1 | 1 | 5 | 1 | 1 | 0 | 0 | 0 | 0 | 0 | 0 | 3-4 | 0-2 | 0 | 5.44 | 89 |
| Apr 29 | at Missouri | | 0.2 | 5 | 6 | 6 | 1 | 0 | 0 | 0 | 2 | 0 | 0 | 0 | 0 | 9-10 | 0-3 | 0 | 6.83 | 26 |
| Totals | | 2 | 27.2 | 44 | 30 | 27 | 16 | 11 | 10 | 0 | 3 | 2 | 0 | 2 | 0 | 56-91 | 0-3 | 0 | 6.83 | - |





2015: Batted .277 while appearing in 38 games as an outfield and designated player... hit four home runs while driving in 18 runs... tallied a .479 slugging percentage... recorded a .291 batting average in MVC play... went 2-2 with two doubles and two RBI in an 8-0 win over Southern Illinois (3/28)... drove in the game-clinching run against Nebraska-Omaha (4/28).

2014: Appeared in 13 games while starting one game as a designated hitter... batted .231 and hit one triple during 13 plate appearances... went 1-for-1 as a pinch hitter in a 6-1 win over SIUE (3/18).

Wolfe is a two-time all-state pick from Dallas Center Grimes High School. She earned Class 4A all-tournament team honors at the state tournament as a sophomore and as a junior. She is a two-time unanimous first-team all-conference selection. She a three-time all-county pick. In 2012, she hit .356 with a .627 slugging percentage and a .460 on-base percentage with seven home runs. As a sophomore in 2011, she hit .471 with a .908 slugging percentage and a .510 on-base percentage with 13 home runs. She led Class 3A in home runs as a sophomore. She holds her high school single-season records in hits (72), RBI (55), doubles (22), home runs (13), slugging percentage (.908), at-bats (153) and runs scored (49). Wolfe has a 3.9157 grade point average and ranks 10th in her class of 148. She is a member of National Honor Society and the Fellowship of Christian Athletes. She also competes in basketball, volleyball and track as a prep athlete. She has taken part in seven RAGBRAI's.



2015: Named to the Missouri Valley Conference All-Defensive team while tallying a .989 fielding percentage from behind the plate... one of three Panthers to play in and start all 50 games... threw out nine runners attempting to steal... hit a two-run homerun while scoring two runs in a 15-11 win against Green Bay (2/7)... tallied two hits while homering against Missouri State (4/25).



2014: Appeared in 33 games while starting 23 games as a catcher... drove in six runs and hit four doubles... recorded a .989 fielding percentage.

Varriano earned first-team all-state honors as a catcher in 2012. Varriano was named the defensive player of the year two years in a row. Varriano has served as team captain and been a four-year letterwinner at Blue Valley High School. Varriano led the team in hits, singles, runs scored, on-base percentage and batting average. In her sophomore season, Blue Valley took runner-up honors in the state of Kansas. She played for the ADIDAS Futures team and took ninth out of 50 teams in the competition. She also played for the KC Xtreme 18 Gold squad coached by Paul Caccavo in 2011-12. She currently plays for the KC Peppers 18 Gold coached by Dan Eakin. Varriano is a member of National Honor Society and has been an honor roll student every year of high school. Varriano is a three-time scholar-athlete recipient. She is also a member of the FEA (Future Educators of America) Club.





22

Alyssa Buchanan

Junior

Pitcher

Fisher, Ind.

Hamilton Southeastern



2015: Tossed 97.1 innings while appearing in 24 games and starting 16 contests... recorded five complete games... allowed just two hits and one run in a 9-1 win over Southern Illinois (3/28)... threw six innings against Indiana State, allowing no earned runs in a 9-1 victory (5/2)... hit a three-run homerun against Iowa State (4/1).

2014: Appeared in 22 games for the Panthers... batted .321 in 28 appear-

ances at the plate... homered and drove in four runs against Southern as a designated hitter in a 15-0 win (2/14)... drove in two runs during as a pinch hitter in a 6-1 win against SIUE (3/18)... pitched five innings with a 4.20 ERA.

Buchanan is a two-time all-conference pitcher at Hamilton Southeastern High School in Fishers, Ind. Buchanan helped her prep squad to the 2010 Indiana 4A state championship. In the 2010 postseason, Buchanan tallied a 1.17 earned run average and hit .455 at the plate. She plans to major in communications at UNI.

| Date | Opponent | GS | IP | H | R | ER | BB | SO | 2B | 3B | HR | WP | BK | HBP | IBB | Score | W-L | Sv | ERA | NP |
|--------|-----------------------|----|------|-----|----|----|----|----|----|----|----|----|----|-----|-----|---------|-----|----|------|-----|
| Feb 06 | SOUTHERN UTAH | ^ | 3.2 | 7 | 5 | 5 | 2 | 2 | 0 | 0 | 1 | 0 | 0 | 0 | 0 | 7-6 | 1-0 | 0 | 9.55 | 88 |
| Feb 07 | WISCONSIN-GREEN B | | 3.2 | 7 | 5 | 4 | 0 | 0 | 0 | 0 | 3 | 0 | 0 | 0 | 0 | 15-11 | 2-0 | 0 | 8.59 | 55 |
| Feb 08 | DRAKE | | 4.0 | 4 | 2 | 2 | 0 | 3 | 0 | 0 | 1 | 0 | 0 | 0 | 0 | 1-7 | 2-0 | 0 | 6.79 | 70 |
| Feb 13 | at Houston | * | 6.0 | 7 | 5 | 5 | 2 | 1 | 0 | 0 | 0 | 0 | 0 | 1 | 0 | 2-5 | 2-1 | 0 | 6.46 | 85 |
| Feb 14 | vs McNeese State | ^ | 7.0 | 9 | 4 | 4 | 2 | 0 | 3 | 1 | 1 | 0 | 0 | 0 | 0 | 1-4 | 2-2 | 0 | 5.75 | 91 |
| Feb 27 | at Columbia | ^ | 6.1 | 7 | 4 | 4 | 1 | 1 | 1 | 0 | 0 | 0 | 0 | 0 | 0 | 3-4 | 2-3 | 0 | 5.48 | - |
| Mar 01 | vs Maryland | ^ | 4.0 | 5 | 7 | 6 | 1 | 1 | 0 | 0 | 1 | 0 | 0 | 2 | 0 | 0-10 | 2-4 | 0 | 6.06 | 68 |
| Mar 06 | vs North Dakota State | * | 4.2 | 10 | 6 | 6 | 3 | 4 | 2 | 0 | 1 | 0 | 0 | 1 | 0 | 4-12 | 2-5 | 0 | 6.41 | 100 |
| Mar 07 | vs Indiana State | * | 2.0 | 2 | 2 | 0 | 0 | 1 | 1 | 0 | 0 | 0 | 0 | 0 | 0 | 1-7 | 2-6 | 0 | 6.10 | 40 |
| Mar 14 | at Illinois State-2 | | 1.1 | 0 | 0 | 0 | 0 | 2 | 0 | 0 | 0 | 0 | 0 | 1 | 0 | 3-5 | 2-6 | 0 | 5.91 | 18 |
| Mar 15 | at Illinois State | | 4.2 | 7 | 5 | 3 | 1 | 2 | 1 | 0 | 0 | 0 | 0 | 3 | 0 | 6-11 | 2-6 | 0 | 5.77 | 92 |
| Mar 21 | at Loyola Chicago | ^ | 5.1 | 5 | 1 | 1 | 0 | 2 | 0 | 0 | 0 | 0 | 0 | 0 | 0 | 2-1 | 2-6 | 0 | 5.32 | 65 |
| Mar 28 | SOUTHERN ILLINOIS | ^ | 5.0 | 2 | 1 | 1 | 2 | 0 | 0 | 0 | 1 | 0 | 0 | 0 | 0 | 9-1 | 3-6 | 0 | 4.98 | 75 |
| Apr 01 | at Iowa State | | 1.0 | 3 | 4 | 3 | 1 | 0 | 0 | 0 | 0 | 0 | 0 | 1 | 0 | 4-12 | 3-6 | 0 | 5.25 | 23 |
| Apr 03 | WICHITA STATE-2 | * | 7.0 | 10 | 4 | 3 | 1 | 1 | 2 | 0 | 0 | 0 | 0 | 1 | 0 | 1-4 | 3-7 | 0 | 5.01 | 110 |
| Apr 11 | BRADLEY-2 | ^ | 5.0 | 10 | 7 | 3 | 1 | 4 | 1 | 0 | 0 | 0 | 0 | 1 | 0 | 3-7 | 3-8 | 0 | 4.95 | 96 |
| Apr 14 | at Drake-2 | ^ | 1.0 | 3 | 6 | 0 | 2 | 2 | 0 | 0 | 0 | 0 | 0 | 0 | 0 | 2-6 | 3-9 | 0 | 4.88 | - |
| Apr 18 | at Evansville | * | 5.0 | 6 | 4 | 1 | 0 | 0 | 0 | 0 | 0 | 0 | 0 | 1 | 0 | 8-7 | 3-9 | 0 | 4.66 | 74 |
| Apr 25 | at Missouri State-2 | * | 4.1 | 8 | 3 | 2 | 3 | 1 | 1 | 0 | 0 | 0 | 0 | 0 | 0 | 3-4 | 3-9 | 0 | 4.58 | 75 |
| Apr 26 | at Missouri State | | 1.0 | 1 | 0 | 0 | 1 | 1 | 0 | 0 | 0 | 0 | 0 | 0 | 0 | 4-6 | 3-9 | 0 | 4.52 | 14 |
| Apr 29 | at Missouri | ^ | 5.1 | 5 | 4 | 2 | 5 | 1 | 0 | 0 | 0 | 0 | 0 | 0 | 0 | 9-10 | 3-9 | 0 | 4.41 | 103 |
| May 02 | INDIANA STATE-2 | ^ | 6.0 | 3 | 1 | 0 | 0 | 2 | 1 | 0 | 0 | 1 | 0 | 1 | 0 | 9-1 | 4-9 | 0 | 4.12 | 93 |
| May 03 | INDIANA STATE | | 3.0 | 2 | 2 | 0 | 1 | 1 | 0 | 0 | 0 | 0 | 0 | 0 | 0 | 5-8 | 4-9 | 0 | 4.00 | 52 |
| May 07 | vs Illinois State | | 1.0 | 4 | 2 | 2 | 0 | 0 | 0 | 0 | 0 | 0 | 0 | 0 | 0 | 2-8 | 4-9 | 0 | 4.10 | 17 |
| Totals | | 16 | 97.1 | 127 | 84 | 57 | 29 | 32 | 13 | 1 | 9 | 1 | 0 | 13 | 0 | 104-157 | 4-9 | 0 | 4.10 | - |



2015: Drove in 57 runs for the Kirkwood Eagles while recording 14 homeruns... batted .357 with a .713 slugging percentage while helping Kirkwood qualify for the national tournament... named first-team all-region in 2015 and 2014.

High School: Four year letter-winner at Dowling Catholic High School... named second-team all-conference as a senior... class 5A all-tournament team honoree while helping lead the Maroons to a state title.



Personal: Daughter of Charles and Lori Crivaro... born on May 24, 1995 in Des Moines, Iowa... has two sisters; Katelyn (17) and Rachelle (16)... majoring in Elementary Education and Early Childhood Education.





21

Kennedy Bailey
Sophomore
Infield

Delta, BC Canada
Sands Secondary

2015: Named MVC Newcomer of the Week (3/9)... drove in a team-high 36 runs... tallied a team-best .408 on-base percentage... batted .293 with a .553 slugging percentage... hit nine home runs with eight of those coming in conference play... went 2-3 with four RBI in an 11-0 win over Loyola (3/21)... homered in four straight games (4/18-4/25)... reached base in 13 straight

games... went 3-4 with a RBI against No. 11 Tennessee (3/6).

High School: Bailey was part of a Delta Heat squad that won the 2012 and 2014 national championship in Canada... named top second baseman during both of the national championship runs while leading the tournament in RBI... posted a batting average of .489 in 2014 while hitting 12 home runs, seven triples and 22 doubles while driving in 84 runs... batted .473 in 2013 with 24 doubles and 77 RBI.



2015: Started four games while appearing in 12... hit a walk-off grand slam in the bottom of the seventh inning in a 15-11 win over Green Bay at the UNI-Dome Classic (2/7).

High School: Nicholson was named first-team all-state in 2013 and 2014 while hitting .423 and .398, respectively ... all-conference selection four times at Winterset High School ... helped lead Winterset to the state tournament three times ... tied the single season home run record ... set the record for slugging percentage in a single season ... second-team all-state in 2012 ... also lettered in basketball.



2015: Redshirted

High School: Kinnetz earned first-team all-state honors in 2012. She is a three-time all-metro pick and a two-time first-team all-conference selection at Waterloo East High School. Kinnetz tallied honorable mention all-state honors in 2011. In 2012, Kinnetz hit 10 home runs, drove in 42 runs, stole 33 bases and hit .513 at the plate. Kinnetz is also a two-time first-team all-metro pick in volleyball. She is an honor roll student and plans to major in biology at UNI.





High School: Tallied a .438 career batting average with 17 home runs and 26 RBI at De Soto High School... helped lead her team to a state championship in 2014 while being named to the all-state squad... member of the St. Louis All Star team as a senior... named to the St. Louis Dispatch All-Star team in 2014 and 2013... all-conference, all-district, all-regional honoree four

straight seasons... member of the 98 Dream Team in 2014 and 2013... named MVP of the JCAA conference as a junior while helping the Dragons finish third in the state... all-state academic second-team honoree as a junior and senior... also played basketball and soccer, helping her team to a district title as freshman... member of the National Honor Society.



High School: Posted a career batting average of .483 at De Soto while striking out 497 batters in 407 innings of work... named St. Louis Post-Dispatch Player of the Year as a senior... batted .567 while helping her team win a state title and being named player of the year and co-MVP of the JCAA conference... team captain as a senior... named to the all-state team as a freshman,

junior, and senior... all-conference, all-district, all-regional, and all-state academic honoree four straight seasons... member of the 98 Dream Team in 2011, 2013, and 2014 while being named MVP in 2013 and 2014... also played basketball, earning all-district honors in 2014 and all-conference in 2013 and 2014... named 2015 Army Reserve Scholarship Athlete of the Year... a member of the National Honor Society.



High School: Craig earned first-team all-metro and first-team all-conference in her first four years for the Sailors. In 2014, she earned 3A all-state honors while batting .500 and talling a 16-6 record and 1.83 ERA in the circle as the Sailors broke the school record for most wins in a season while winning the conference championship. Craig has lettered in volleyball, basketball, track, and softball while being named a team captain in volleyball and basketball. She is the daughter of Martin and Sarah Craig.



High School: Batted .367 while compiling a 1.70 ERA as a senior... varsity state champion in 2011... named USSSA National Defensive MVP in 2010... made the honor roll all four years.

Personal: Daughter of Scot Lange... born on Sioux Falls, SD on December 30, 1996... has one brother; Kee-gan (22)... majoring in Movement and Exercise Science.



**UNI
PANTHERS**



Individual Season Records

Hitting Records

Batting Average

1. .446 Lindsay Wood (83-186) 2002
2. .393 Jody Dean (55-140) 1998
3. .390 Deena Chipp (64-164) 1992

Slugging Percentage

1. .757 Jody Dean (140 Ab) 1998
2. .726 Lindsay Wood (186 Ab) 2002
3. .676 Jody Dean (173 Ab) 1997

On-Base Percentage

1. .536 Lindsay Wood (186 Ab) 2002
2. .473 Jody Dean (140 Ab) 1998
3. .459 Deena Chipp (164 Ab) 1992

Stolen Base Percentage

1. 1.000.. (8 Players)

Games Played

1. 64..... Heather Daters..... 1991
- 64..... Holly Harrison 1991
- 64..... Jennifer Peters 1991
- 64..... Cindy Franzen 1991

Games Started

1. 64..... Heather Daters..... 1991
- 64..... Jennifer Peters 1991
- 64..... Cindy Franzen 1991
- 64..... Holly Harrison 1991

At-Bats

1. 213 Lindsay Wood 2000
2. 207 Cindy Franzen 1991
3. 206 Connie Fangmann 1990

Runs Scored

1. 55 Lindsay Wood 2002
2. 48 Jen Dean 1997
3. 47 Mackenzie Daigh 2012

Hits

1. 83 Lindsay Wood 2002
2. 77 Lindsay Wood 2000
3. 71 Mackenzie Daigh 2012

Doubles

1. 19 Kylie Sloan 1999
2. 18 Vicki White 1990
- 18 Mackenzie Daigh 2012

Triples

1. 11 Laura Novotny 1992
2. 9 Teresa Kennedy 1980
- 9 Lynell O'Connor 1988
- 9 Amber Sampson 1997

Home Runs

1. 14 Angela Higgins 2003
- 14 Courtney Dunker 2010
2. 12 Jody Dean 1997
- 12 Jody Dean 1998
- 12 Kelly Papesh 2009



Lindsay Wood (1999-2002) was a three-time Missouri Valley Conference batting champion and 2002 MVC Player of the Year. A native of Eldridge, Iowa, Wood set 11 school records during her career and was named a first team All-American in 2002, a first for a UNI player. She was later drafted by the Akron Racers of the National Pro Fastpitch league.

Runs Batted In

1. 59 Rachel Gerking 2009
2. 44 Jen Dean 1994
- 44 Jody Dean 1997
- 44 Stacy Weber 1994

Total Bases

1. 135 Lindsay Wood 2002
2. 129 Lindsay Wood 2000
3. 117 Jody Dean 1997

Walks Drawn

1. 35 Lindsay Wood 2002
2. 34 Courtney Dunker 2011
3. 31 Jen Larsen 2010

Hit By Pitch

1. 19 Hannah Borschel 2012
2. 18 Hannah Borschel 2011
3. 17 Whitney Plein 2011

Strikeouts

1. 53 Rachael Rogers 2003
2. 52 Jeannine Soncini 1999
3. 51 Rachael Rogers 2006
- 51 Courtney Dunker 2011

Sacrifice Flies

1. 5 Melissa Navntoft 1999
2. 4 Jenny Schultz 1990
- 4 Courtney Dunker 2012

Sacrifice Hits

1. 33 Jenny Schultz 1988
2. 25 Pam Phipps 1986
3. 24 Jennifer Peters 1993

Stolen Bases

1. 24 Kristi Johnson (24-31) 2001
2. 23 Lindsay Wood (23-29) 2002
3. 22 (2 Players)

Stolen Base Attempts

1. 31 Kristi Johnson (24-31) 2001
2. 29 Lindsay Wood (23-29) 2002
3. 25 (2 Players)

Pitching Records

Earned Run Average

1. 0.35 Jennifer Berger (159.2 Ip) 1982
2. 0.63 Krista Fosbinder (166.0 Ip) ... 1986
3. 0.65 Kathy Gross (107.1 IP) 1981

Opponent Batting Average

1. .179 Jamie Fisher (190.0 IP) 2012
2. .184 Malinda McClintock (128.0 IP) .. 2002
3. .216 Jamie Fisher (233.1 IP) 2013

Walks Per 7 Innings

1. 0.63 Lesa Trenary (122.2 IP) 1981
2. 0.79 Lori Cook (150.2 IP) 1984
3. 0.97 Jeannine Soncini (195.2 IP) . 1999

Strikeouts Per 7 Innings

1. 9.47 Jennifer Berger (159.2 IP) 1982
2. 7.87 Jamie Fisher (187.2 IP) 2011
3. 7.75 Jamie Fisher (176 IP) 2012

Wins

1. 22 Jamie Fisher (22-15) 2013
2. 21 Sarah O'Byrne (21-20) 1990
3. 20 Jamie Fisher (20-11) 2011
- 20 Jamie Fisher (20-4) 2012

Losses

1. 21 Julie Phillips (19-21) 2002
2. 20 Sarah O'Byrne (21-20) 1990
3. 19 Monica Wright (7-19) 2006

Saves

1. 3 (5 Players)

Appearances

1. 47 Sarah O'Byrne 1990
2. 43 Desiree Bebout 1992
3. 42 Julie Phillips 2002

Games Started

1. 42 Julie Phillips 2002
2. 38 Sarah O'Byrne 1990
- 38 Jamie Fisher 2013

Individual Season Records

Complete Games

- 34..... Sarah O'Byrne..... 1990
- 34..... Jamie Fisher 2013
- 30..... Julie Phillips 2002

Shutouts

- 9 Julie Phillips 2002
- 9 Sarah O'Byrne..... 1988
- 8 (4 Players)

Innings Pitched

- 279.1 .. Sarah O'Byrne..... 1990
- 253.1 .. Jamie Fisher 2013
- 249.1 .. Julie Phillips 2002

Hits Allowed

- 301 Julie Phillips 2002
- 242 Sarah O'Byrne..... 1990
- 221 Desiree Bebout..... 1992

Runs Allowed

- 146 Julie Phillips 2002
- 123 Monica Wright 2006
- 116 Chelsea Roos 2015

Walks Allowed

- 107 Uju Ibekwe 2006
- 98 Julie Phillips 2002
- 97 Jamie Fisher 2013

Batters Struck Out

- 216 Jennifer Berger 1982
- 213 Jamie Fisher 2013
- 211 Jamie Fisher 2011

Doubles Allowed

- 45 Julie Phillips 2002
- 43 Monica Wright 2006
- 34 Ashley Lepley 2007

Home Runs Allowed

- 29 Chelsea Ross 2015
- 25 Jen Larsen 2007
- 22 Ashley Lepley 2008

Wild Pitches

- 27 Chelsea Ross 2015
- 22 Uju Ibekwe 2006
- 21 Jaye Hutcheson 2012

Hit Batters

- 22 Jaye Hutcheson 2012
- 21 Julie Phillips 2002
- 21 Jamie Fisher 2014

Fielding Records

Fielding Percentage

- 1.000.. Shellie Pfohl (207-12-0) 1982
- 1.000.. Morgan Paulson (230-15-0) 2008
- 1.000.. Allison Taverner (121-8-0) 2001

Putouts

- 539 Cindy Franzen 1989
- 522 Cindy Franzen 1990
- 513 Connie Fangmann 1991
- 513 Cindy Franzen 1991

Assists

- 202 Holly Harrison 1991
- 172 Stacy Weber 1994
- 158 Lindsay Wood..... 2002

Errors

- 44 Deena Chipp..... 1990
- 38 Stacy Weber 1993
- 32 Paula Evers 1986

Double Plays

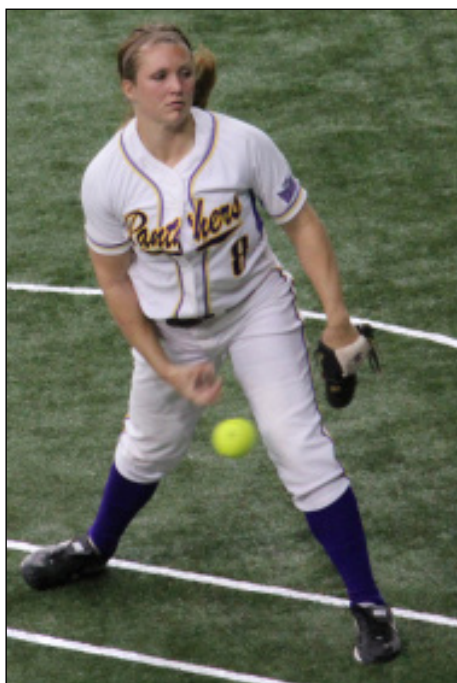
- 18 Angie Schreurs..... 1998
- 17 Jackie Paulus 1998
- 17 Jamie Kelling 2006

Triple Plays

- 1 Jamie Kelling 2006
- 1 Stephanie Aguero..... 2006

Caught Stealing

- 19 Kelly Papesh..... 2006
- 16 Angela Higgins 2002
- 15 Julie Phillips 2002



Team Records

Single-Season Hitting

- » Batting Average:.....2971993
- » Slugging Percentage:464.....2014
- » On-Base Percentage:..3672012
- » Hits:455.....1997
- » Runs Scored:292.....1997
- » Doubles:801997
- » Triples:.....311992
- » Home Runs:.....52 ..2009, 2014
- » Walks:.....161.....2012
- » Strikeouts:.....374.....2000
- » Stolen Bases:881996

Single-Season Pitching

- » Earned Run Average: 1.251987
- » Opponent Average:...189.....1986
- » Strikeouts:.....382.....2011
- » Complete Games:.....551988
- » Shutouts:171988
- » Innings Pitched:430.01991
- » Most Hits Allowed:.....4571991
- » Fewest Hits Allowed:240*1986
- » Most Runs Allowed:..276.....2007
- » Fewest Runs Allowed: ...107*1986

Single-Season Fielding

- » Fielding Percentage: ..9712008
- » Fewest Errors:412008
- » Most Errors:128.....1992
- » Double Plays:24 .1998, 2006, 2009

Miscellaneous

- » Games Played:.....641991
- » Wins:401994
- » Conference Wins:212012
- » Fewest Wins:122006
- » Losses:401991
- » Consecutive Wins.....152012

* NCAA Division I seasons only (1983-present)

Hitting Records

Batting Average

1. .367 Lindsay Wood.....1999-02
2. .361 Jody Dean.....1996-99
3. .348 Deena Chipp.....1990-93
4. .342 Mackenzie Daigh2009-12
5. .337 Rikki Alcaraz.....2014-15

Slugging Percentage

1. .631 Jody Dean.....1996-99
2. .599 Rikki Alcaraz.....2014-15
3. .555 Deena Chipp1990-93
4. .548 Lindsay Wood.....1999-02
5. .538 Jen Larsen.....2007-10

On Base Percentage

1. .428 Lindsay Wood.....1999-02
2. .423 Jody Dean1996-99
3. .416 Jen Larsen.....2007-10
4. .407 Rikki Alcaraz.....2014-15
5. .405 Deena Chipp1990-93

Stolen Base Percentage

1. 1.000.. Jen Dean (64-64).....1994-97
- 1.000.. Sheryl Schlader (35-35)....1978-81
- 1.000.. Betty Davis (39-39).....1981-83
- 1.000.. Marshelle Clark (32-32)....1981-84
5. .943 Deena Chipp (33-35)1990-93

Games Played

1. 231 Jenny Schultz1987-90
- 231 Lindsay Wood.....1999-02
3. 230 Vicki White.....1989-92
4. 229 Mary Decoster.....1987-90
5. 220 Heather Daters.....1991-94

Games Started

1. 230 Lindsay Wood.....1999-02
2. 229 Vicki White.....1989-92
3. 220 Heather Daters.....1991-94
4. 207 Deena Chipp.....1990-93
5. 205 Connie Fangmann1990-93

Runs Scored

1. 151 Mackenzie Daigh2009-12
2. 148 Lindsay Wood.....1999-02
3. 135 Jackie Paulus1996-99
4. 133 Jen Larsen.....2007-10
5. 130 Heather Daters.....1991-94
- 130 Megan Machovec2007-10

Hits

1. 269 Lindsay Wood.....1999-02
2. 231 Mackenzie Daigh2009-12
3. 216 Jackie Paulus1996-99
4. 209 Chris Ehlert.....1986-89
5. 208 Heather Daters.....1991-94
- 208 Deena Chipp.....1990-93
- 208 Megan Machovec2007-10

Doubles

1. 51 Mackenzie Daigh2009-12
2. 43 Vicki White.....1989-92
- 43 Lindsay Wood.....1999-02
- 43 Rachel Gerking2007-11
5. 42 Kylie Sloan1998-00

Triples

1. 24 Laura Novotny1990-93
2. 20 Amber Sampson1995-98
3. 18 Lynell O'Connor.....1987-90
- 18 Megan Machovec2007-10
4. 17 Laurel Magee.....1981-84

Home Runs

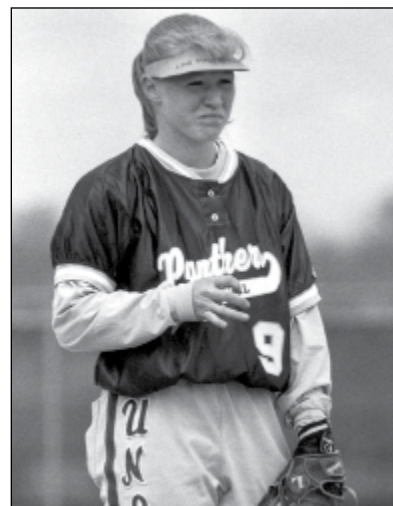
1. 30 Jen Larsen.....2007-10
2. 29 Jody Dean.....1996-99
- 29 Courtney Dunker2009-12
4. 25 Rachael Rogers2003-06
5. 23 Jen Dean1994-97

Runs Batted In

1. 124 Rachel Gerking2007-11
2. 121 Jen Larsen.....2007-10
3. 119 Jen Dean1994-97
4. 117 Jody Dean.....1996-99
5. 116 Angie Schreurs.....1996-99

Walks

1. 88 Jen Larsen.....2007-10
2. 85 Vicki White.....1989-92
3. 77 Lindsay Wood.....1999-02
4. 75 Gina Brown.....2011-14
5. 74 Angie Schreurs.....1996-99



Jen Dean (1994-97) owns the NCAA record for career stolen-base percentage, going 64-for-64 on the basepaths during her four years with the Panthers. No other player with at least 50 steals has posted a career percentage of 1.000 in NCAA history.

Hit By Pitch

1. 40 Hannah Borschel.....2009-12
2. 27 Whitney Plein2010-12
3. 16 Mackenzie Daigh2009-12
4. 14 Kristin Lock.....2013-15
5. 11 Rachel Gerking2007-11

Strikeouts

1. 180 Rachael Rogers2003-06
2. 143 Angie Schreurs.....1996-99
3. 138 Beth Scheetz.....1998-01
4. 134 Amber Sampson1995-98
5. 130 Courtney Dunker2009-12

Sacrifice Hits

1. 81 Jenny Schultz1987-90
2. 47 Jennifer Peters1990-93
- 47 Pam Phipps1983-86
4. 40 Kristal Ward1992-95
5. 39 Tracy Davis2002-05

Stolen Bases

1. 64 Jen Dean (64-64)1994-97
2. 60 Lindsay Wood (60-76).....1999-02
3. 45 Kristi Johnson (45-56).....2000-01
4. 41 Stacy Weber (41-45).....1993-96
- 41 Megan Machovec2007-10



Jody Dean, a Panther from 1996-1998, owns the UNI career record for slugging percentage despite having her career cut short by injury in her senior campaign. Dean was named third team All-America in 1997.

Individual Season Records

Pitching Records

Earned Run Average

1. 0.67 Kathy Gross (346.2 IP).....1979-82
2. 1.02 Jennifer Berger (446.0 IP)1982-84
3. 1.07 Lori Cook (346.1 IP)1981-84
4. 1.11 Krista Fosbinder (766.0 IP) ...1986-89
5. 1.50 Sarah O'Byrne (752.2 IP) .1987-90

Opponent Batting Average

1. .214 Jamie Fisher (817.0 IP).....2011-14
2. .228 Malinda McClintock (513.2 IP) ..2000-02,04
3. .245 Kandy Keiper (265.2 IP)....1993-94
4. .253 Desiree Bebout (665.0 IP)1991-94
5. .254 Chelsea Ross (326.0 IP)....2014-15

Wins

1. 79..... Jamie Fisher (79-44)2011-14
2. 60..... Sarah O'Byrne (60-48)1987-90
3. 59..... Krista Fosbinder (59-50) .1986-89
4. 53..... Desiree Bebout (53-47) ...1991-94
5. 49..... Jeannine Soncini (49-37)1997-00

Losses

1. 60..... Julie Phillips (40-60)2001-04
2. 50..... Krista Fosbinder (59-50) .1986-89
3. 48..... Sarah O'Byrne (60-48)1987-90
4. 47..... Desiree Bebout (53-47) ...1991-94
5. 47..... Jen Larsen (47-47).....2007-10



A 2007 inductee into the UNI Athletics Hall of Fame, Krista Fosbinder (1986-89) tallied a remarkable 1.11 career ERA - the best of any UNI pitcher with at least 500 career innings pitched. She tossed a UNI school-record 28 shutouts in her career. Her 59 career wins ranks as the third-best total in school history.

Saves

1. 7 Malinda McClintock...2000-02,04
2. 5 Desiree Bebout1991-94
3. 4 Heidi Fromherz1997-00
4. 3 Jen Larsen.....2007-10
- 3 Jaye Hutcheson2009-12

Appearances

1. 140 Jamie Fisher2011-14
2. 122 Krista Fosbinder.....1986-89
- 122 Jen Larsen.....2007-10
4. 121 Sarah O'Byrne.....1987-90
5. 119 Desiree Bebout1991-94

Games Started

1. 126 Jamie Fisher2011-14
2. 108 Sarah O'Byrne.....1987-90
3. 104 Krista Fosbinder.....1986-89
4. 100 Desiree Bebout1991-94
5. 98..... Julie Phillips2001-04

Complete Games

1. 97..... Jamie Fisher2011-14
2. 85..... Sarah O'Byrne.....1987-90
3. 84..... Desiree Bebout1991-94
4. 63..... Julie Phillips2001-04
5. 61..... Shelby Worms1995-98

Shutouts

1. 28..... Krista Fosbinder.....1986-89
2. 21..... Jamie Fisher2011-14
3. 22..... Sarah O'Byrne.....1987-90
4. 18..... Desiree Bebout1991-94
5. 15..... Jeannine Soncini1997-00

Innings Pitched

1. 766.0.. Krista Fosbinder.....1986-89
2. 752.2.. Sarah O'Byrne.....1987-90
3. 665.0.. Desiree Bebout1991-94
4. 631.0.. Jamie Fisher2011-13
5. 612.0.. Julie Phillips2001-04

Strikeouts

1. 767 Jamie Fisher2011-14
2. 415 Malinda McClintock...2000-02,04
3. 413 Jennifer Berger1982-84
4. 407 Krista Fosbinder.....1986-89
5. 351 Shelby Worms1995-98

Fewest Walks Per 7 Innings

1. 1.09 Lori Cook (346.1 IP)1981-84
2. 1.29 Kandy Keiper (265.2 IP)....1993-94
3. 1.35 Linda Whannel (260.0 IP)1985-86
4. 1.36 Heidi Fromherz (426.2 IP)1997-00
5. 1.48 Sarah O'Byrne (752.2 IP) .1987-90

Wild Pitches

1. 59..... Jamie Fisher2011-14
2. 56..... Jaye Hutcheson2009-12
3. 43..... Sarah O'Byrne.....1987-90
4. 40..... Heidi Fromherz1997-00
- 40..... Uju Ibekwe2003-06

Most Hit Batters

1. 52..... Julie Phillips2001-04
2. 50..... Jamie Fisher2011-14
3. 40..... Jaye Hutcheson2009-12
4. 32..... Jen Larsen.....2007-10
5. 29..... Melissa Tillett.....2008-11

Fielding Records

Fielding Percentage

1. .989 Angie Schreurs.....1996-99
2. .989 Morgan Paulson2006-09
3. .987 Gina Brown.....2011-14
4. .984 Cindy Franzen1989-91
5. .984 Laurel Magee.....1981-84

Double Plays

1. 48..... Morgan Paulson2006-09
2. 37 Cindy Franzen1989-91
3. 31 Stephanie Aguero.....2005-07
4. 29..... Mackenzie Daigh2009-12
5. 27 Angie Schreurs.....1996-99

Triple Plays

1. 1 Stephanie Aguero.....2005-07
- 1 Jamie Kelling2005-06

Putouts

1. 1,707.. Angie Schreurs.....1996-99
2. 1,574.. Cindy Franzen1989-91
3. 1,255.. Morgan Paulson2006-09
4. 1,022.. Laurel Magee.....1981-84
5. 980 Amy Hendrickson1991-94

Assists

1. 554 Stacy Weber1993-96
2. 453 Jackie Paulus1996-99
3. 446 Lindsay Wood.....1999-02
4. 436 Paula Evers1985-88
5. 430 Kylie Sloan1998-00

Most Errors

1. 94 Stacy Weber.....1993-96
2. 81 Paula Evers1985-88
3. 73 Deena Chipp1990-93
4. 66 Betty Thronsdon1979-82
5. 61 Sherri Salsbury1982-84

Year-By-Year Results



Jane Mertesdorf

1974

(15-3)

Jane Mertesdorf (1st)

| | |
|---------------------------|------------|
| Luther | 14-2, 2-0 |
| Graceland | 2-3, 27-1 |
| Grand View | 18-4, 9-1 |
| Iowa State | 6-5, 7-3 |
| Luther | 6-3, 7-6 |
| Iowa | 13-0, 34-1 |
| Wartburg | 4-3, 5-4 |
| IAIAW Championships (3rd) | |
| Graceland | 9-2 |
| Buena Vista | 11-1 |
| Luther | 1-2 |
| Iowa State | 1-4 |

1975

(20-4)

Jane Mertesdorf (2nd)

| | |
|---------------------------------|-----------|
| Luther | 3-0, 5-6 |
| Iowa | 10-0, 6-4 |
| Iowa State | 7-1, 10-2 |
| Graceland | 8-3 |
| Kansas State | 3-4 (8) |
| Wartburg | 15-1, 9-1 |
| IAIAW District Tournament (1st) | |
| Wartburg | 5-1 |
| Luther | 4-0, 4-0 |

| | |
|------------------------------|----------|
| IAIAW State Tournament (1st) | |
| Graceland | 12-3 |
| Iowa Wesleyan | 10-0 |
| Iowa State | 2-1, 3-2 |

| | |
|----------------------------|-----------|
| Women's College W.S. (2nd) | |
| Oklahoma | 5-0 |
| Michigan State | 4-3 |
| Kansas | 4-1 |
| Nebraska-Omaha | 0-1 |
| Michigan State | 7-3 |
| Nebraska-Omaha | 11-1, 4-6 |

1976

(23-3)

Jane Mertesdorf (3rd)

| | |
|---------------------------|-----------|
| Iowa | 11-0 |
| Luther | 3-0 |
| Wartburg | 3-2, 8-1 |
| Iowa State | 7-4, 1-0 |
| Luther | 1-0 |
| Graceland | 8-0, 15-0 |
| Wartburg | 5-0, 1-0 |
| Luther | 1-0, 3-4 |
| Minn. St., Mankato | 10-0 |
| Minnesota | 10-0 |
| Moorhead State | 11-0 |
| IAIAW Championships (1st) | |
| William Penn | 10-0 |
| Drake | 11-0 |
| Wartburg | 2-0 |
| Iowa State | 9-1 |

| | |
|------------------------------|------|
| Luther | 7-2 |
| Women's College W.S. (top 6) | |
| Northern St. College | 3-1 |
| Arizona State | 0-2 |
| Indiana State | 10-2 |
| Texas | 6-0 |
| Northern Colorado | 0-1 |

1977

(30-2)

Jane Mertesdorf (4th)

| | |
|---------------------------------|------------|
| Wartburg | 4-3, 9-1 |
| Nebraska-Omaha | 9-3, 7-2 |
| Iowa | 6-5, 7-0 |
| Grand View | 12-0, 12-2 |
| Mt. Mercy | 6-1, 7-1 |
| IAIAW District Tournament (1st) | |
| Upper Iowa | 13-0 |
| Luther | 3-2 |
| Iowa State | 2-0, 1-0 |
| Wartburg | 9-0, 10-3 |
| Waldorf | 12-0, 9-0 |
| Luther | 0-1, 13-0 |

| | |
|---------------------------|----------|
| IAIAW State Champs. (1st) | |
| Mt. Mercy | 9-0 |
| William Penn | 2-0 |
| Iowa State | 2-1, 4-2 |

| | |
|----------------------------|----------|
| IAIAW Reg. 6 Champs. (1st) | |
| North Dakota State | 4-0 |
| Tarkio | 1-0 |
| Missouri State | 3-2, 6-1 |

| | |
|----------------------------|-----------------------|
| Women's College W.S. (1st) | |
| Southern Illinois | 3-0 |
| Kansas | 4-0 |
| Michigan State | 7-3 |
| Arizona | 1-0 (8), 0-1 (9), 7-0 |

1978

(21-11)

Jane Mertesdorf (5th)

| | |
|--------------|-------------|
| Wartburg | 2-1, 5-3 |
| Luther | 4-3, 0-1 |
| Grand View | 4-3, 5-1 |
| Iowa | 1-5 |
| Luther | 1-4 |
| William Penn | 5-3, 5-4 |
| Drake | 13-3, 10-3 |
| Iowa State | 2-4, 9-7 |
| Loras | 2-4, 0-5 |
| Loras | (Default 2) |
| Minnesota | 9-2, 0-3 |

| | |
|---------------------------------|----------|
| IAIAW District Tournament (1st) | |
| Upper Iowa | 13-4 |
| Luther | 7-5 |
| Wartburg | 7-3, 7-0 |

| | |
|------------------------------|-----|
| IAIAW State Tournament (5th) | |
| Central | 4-2 |
| Mt. Mercy | 4-2 |
| Grand View | 1-2 |
| Iowa State | 1-2 |

| | |
|-------------------------------|------|
| IAIAW Reg. 6 Tournament (4th) | |
| Minnesota | 0-4 |
| South Dakota | 11-2 |
| Luther | 8-3 |
| Kansas | 0-5 |

1979

(22-9)



Meredith Bakley

edith Bakley (1st)

| | |
|-----------------|---------------|
| Wartburg | 4-7, 6-5 |
| Wichita State | 10-2 |
| Nebraska | 2-5 |
| Wayne State | 5-4 |
| Emporia State | 1-6 |
| Drake | 1-0 (9), 5-1 |
| St. Cloud State | 6-3, 6-5 |
| Minnesota | 5-7 |
| Luther | 15-5 (5), 5-4 |
| Mt. Mercy | 2-3, 10-6 |
| Loras | 1-0, 8-2 |
| Iowa State | 0-1, 4-3 |

| | |
|---------------------------------|----------|
| IAIAW District Tournament (1st) | |
| Luther | 7-2 |
| Upper Iowa | 5-2 |
| Wartburg | 8-2, 3-1 |
| Grand View | 1-3, 2-1 |

| | |
|------------------------------|----------|
| IAIAW State Tournament (2nd) | |
| Iowa Wesleyan | 8-0 |
| Iowa State | 5-0 |
| William Penn | 3-1 |
| Drake | 0-1 (12) |
| William Penn | 6-5 (8) |
| Drake | 1-2 |

1980

(31-15)

Meredith Bakley (2nd)

| | |
|--------------------------------|----------------|
| Hawaii-Hilo Invitational (2nd) | |
| Texas Woman's | 0-1 |
| Utah State | 0-2 |
| Northern Colorado | 0-1 |
| Golden West St. | 1-0, 4-5 |
| Northern Colorado | 1-5 |
| Hilo Comets | 1-0, 0-1, 10-0 |
| Northern Colorado | 5-3 |
| Texas Woman's | 2-3 |
| Utah State | 1-0 |
| Wartburg | 10-0, 4-0 |
| Iowa | 7-1, 1-0 |

| | |
|-----------------------|---------------|
| Nebraska invitational | |
| Nebraska-Omaha | 8-1 |
| Nebraska | 1-5 |
| NW Missouri State | 8-5 |
| South Dakota | 5-2 |
| Wayne State | 2-3 |
| Luther | 5-0, 2-0 |
| Loras | 2-0, 11-0 |
| Central | 7-0, 7-0 |
| Mt. Mercy | 5-3, 8-6 |
| Upper Iowa | (Forfeits 2) |
| Drake | 6-3, 2-4 |
| Clarke College | 18-0 (5), 9-0 |

| | |
|------------------------------|----------|
| Minnesota Invitational | |
| Iowa State | 0-3 |
| Northwestern | 7-2, 6-0 |
| Iowa | 6-0 |
| Minnesota | 2-6 |
| Grand View | 2-0, 2-6 |
| IAIAW State Tournament (3rd) | |
| Westmar | 3-1 |
| Northwestern (IA) | 1-0 (9) |
| William Penn | 0-3 |
| Drake | 1-5 |

1981

(28-16)

Meredith Bakley (3rd)

| | |
|----------------------------|---------------|
| Texas Woman's Invitational | |
| Texas-Arlington | 0-1 (9), 2-1 |
| Texas Woman's | 1-4, 2-3 |
| Iowa State | 1-2 |
| South Carolina | 4-5 |
| Western Michigan | 2-3 |
| North Texas | 9-0 |
| Oklahoma City | 6-1 |
| Texas Woman's | 1-3 |
| Wartburg | 12-2 (5) |
| Grand View | 0-1 (8) |
| William Penn | 3-2, 4-1 |
| Mt. Mercy | 4-1, 12-0 (6) |
| St. Ambrose | 3-2 (8), 3-1 |
| Iowa | 5-4, 4-1 |
| Iowa State | 3-0, 1-2 |
| Colorado State | 3-0 |
| Wyoming | 5-2 |
| Nebraska-Omaha | 4-3 |
| William Penn | 6-2, 7-2 |
| Luther | 7-1, 13-0 (5) |

| | |
|------------------------|-----------|
| IAIAW Sectionals (3rd) | |
| Grand View | 4-0 |
| Drake | 2-1 |
| Northwestern (Iowa) | 1-5 |
| Drake | 1-5 |
| Loras | 1-4, 12-0 |

| | |
|------------------------------|-----|
| IAIAW State Tournament (3rd) | |
| St. Ambrose | 0-2 |
| Loras | 9-1 |
| St. Ambrose | 3-0 |
| Grand View | 0-5 |

| | |
|-------------------------------|---------|
| IAIAW Reg. 6 Tournament (4th) | |
| Moorhead State | 7-0 |
| South Dakota | 2-1 |
| Truman State | 0-1 |
| St. Cloud State | 6-0 (8) |
| Grand View | 0-1 |

1982

(35-15-1)

Meredith Bakley (4th)

| | |
|-----------------------------|---------------|
| Okla. Baptist | 3-6, 13-5 (5) |
| Southern Illinois | 3-4 (8) |
| Oklahoma | 0-6 |
| Oklahoma City | 7-3 |
| Texas-Arlington | 1-6 |
| Oklahoma City | 11-2 (5), 1-6 |
| Missouri State Invitational | |
| Missouri State | 2-7 |
| Southern Illinois | 1-0 (10) |
| Minnesota | 1-9 |

| | |
|--------------|--------------|
| William Penn | 3-1, 3-2 (9) |
| St. Ambrose | 3-0, 4-2 |

| | |
|-------------------|------------------|
| Iowa Invitational | |
| Grand View | 0-4, 12-3 |
| Iowa | 5-0, 0-3 |
| Iowa State | 0-1 (8), 5-5 (5) |

| | |
|-------------------------------|----------------|
| Missouri Western Invite (2nd) | |
| Wayne State | 4-0 |
| Missouri Western | 2-0 |
| Nebraska-Omaha | 2-0 |
| Truman State | 3-0 |
| Missouri Western | 0-3, 0-2 |
| William Penn | 0-2, 7-2 |
| Wartburg | 10-2, 10-0 (5) |
| Luther | 2-1, 9-3 |

| | |
|-----------------------------|---------------|
| IAIAW West Sectionals (1st) | |
| Grand View | 13-1 |
| (6)Northwestern (Iowa) | 14-2 |
| (5)Northwestern (Iowa) | 10-0 |
| Grand View | 5-1, 6-0 |
| Loras | 8-4, 14-2 (6) |

| | |
|------------------------------|----------|
| IAIAW State Tournament (3rd) | |
| St. Ambrose | 4-1 (8) |
| William Penn | 0-2 |
| St. Ambrose | 1-2 (10) |

| | |
|---------------------------------|------|
| IAIAW Region 6 Tournament (1st) | |
| Minnesota-Duluth | 2-0 |
| NW Missouri State | 4-0 |
| Augustana (S.D.) | 3-0 |
| St. Ambrose | 13-1 |

| | |
|------------------------------|----------|
| IAIAW II Championships (1st) | |
| Eastern Illinois | 1-0 |
| Northern Arizona | 6-2 |
| SIU-Edwardsville | 1-0, 5-0 |

1983

(31-15)

Meredith Bakley (5th)

| | |
|----------------------------------|-----------|
| Central State Invitational (2nd) | |
| West Texas A&M | 4-1 |
| Wichita State | 5-1 |
| South Dakota State | 8-1 |
| Central Oklahoma | 6-1 |
| Northwestern State | 2-1 |
| Texas Wesleyan | 1-2 |
| Oklahoma Baptist | 2-0, 3-9 |
| Oklahoma State | 0-8, 1-8 |
| Missouri | 3-9 |
| Wyoming | 9-4 |
| Oklahoma City | 9-1, 8-0 |
| Wartburg | 10-1, 4-3 |
| Iowa | 1-2, (10) |
| St. Ambrose | 3-1, 7-6 |
| Minnesota | 3-2, 3-5 |
| William Penn | 7-1, 6-0 |
| Iowa State | 2-3, 2-0 |

| | |
|-----------------------------------|----------|
| Missouri Western Invitational | |
| Washburn | 4-0 |
| Nebraska-Kearney | 2-3 (8) |
| Oklahoma Baptist | 1-0 (9) |
| Nebraska-Omaha | 2-5 |
| Iowa | 2-0, 3-1 |
| Drake | 1-0, 2-1 |
| Illinois State Invitational (1st) | |
| Southern Illinois | 3-0 |
| Western Illinois | 2-1 |
| Kent State | 6-2 |

Year-By-Year Results

| | |
|--------------------------|----------|
| Indiana State | 7-1 |
| Central Michigan | 3-1 |
| Grand View | 2-3, 5-1 |
| Loras | 1-0, 9-8 |
| Minnesota | 0-5, 0-4 |
| Gateway Conf. Tournament | |
| Indiana State | 2-3 (10) |
| Wichita State | 0-1 (9) |

1984

| | |
|------------------------------|---------------|
| (23-22-1, 8-8 Gateway) | |
| Meredith Bakley (6th) | |
| Central State Invitational | |
| Texas Wesleyan | 3-2 |
| Central Oklahoma..... | 2-5 |
| Friends | 1-0 |
| Pittsburg State | 5-2 |
| Oklahoma Baptist | 0-3 |
| Arizona | 0-1 (11) |
| Indiana | 0-2 |
| Oklahoma City | 0-0 (26) |
| Pittsburg State Invitational | |
| Nebraska-Omaha | 3-2 |
| Missouri Southern | 9-2 |
| Texas Wesleyan | 0-1 |
| Wartburg | 11-0, 3-4 |
| *Illinois State | 1-2 (13), 0-9 |
| *Indiana State | 1-0, 2-1 |
| Iowa | 8-7, 2-7 |
| MSU-Mankato | 1-0, 4-0 |
| *Western Illinois..... | 0-2 (9), 2-4 |
| *Bradley | 2-9, 0-1 |
| St. Ambrose | 4-0, 2-0 |
| UNI-Dome Tournament (4th) | |
| South Dakota | 1-2 |
| Truman State | 3-1 |
| Missouri Western | 1-3 |
| Nebraska-Kearney | 4-3 (9) |
| St. Xavier | 2-0 |
| Iowa State | 4-5, 5-0 |
| *Eastern Illinois | 4-2, 3-1 |
| *Southern Illinois | 2-1, 0-4 |
| Iowa | 1-7, 1-3 |
| *Missouri State | 1-0, 1-0 |
| *Wichita State | 0-1 (8), 5-2 |
| Gateway Conf. Tournament | |
| Bradley | 0-7 |
| Eastern Illinois | 0-5 |

1985

| | |
|--------------------------|---------------|
| (24-30, 8-10 Gateway) | |
| Meredith Bakley (7th) | |
| Sooner Invitational | |
| Kansas | 1-2 |
| Arizona State | 1-6 |
| Central Michigan | 1-2 |
| Indiana | 2-7, 1-2 |
| Central Michigan | 1-3 |
| Missouri | 0-1 |
| SIU- Edwardsville | 0-1 |
| Oklahoma | 3-4 |
| Oklahoma Baptist | 3-1, 4-0 |
| Wartburg | 7-1, 5-0 |
| Mt. Mercy | 0-1, 18-1 (5) |
| Iowa | 5-6, 4-1 |
| Minn. St., Mankato | 7-0, 2-1 |
| *Eastern Illinois | 2-0, 2-1 |
| *Southern Illinois | 5-2, 0-7 |

| | |
|---------------------------|---------------|
| *Drake | 2-3 (9), 4-6 |
| Creighton | 0-6 |
| UNI-Dome Tournament (3rd) | |
| Michigan State | 4-3 |
| Creighton | 0-2 |
| Colorado State | 2-0 |
| Central Michigan | 2-0 |
| Drake | 3-0 |
| Nebraska-Omaha | 6-3 |
| Central Michigan | 0-1 (8) |
| St. Ambrose | 6-1, 4-3 |
| Iowa State | 0-5, 3-7 |
| *Illinois State | 1-0, 7-8 |
| *Indiana State | 4-10, 2-3 (8) |
| Grand View | 4-12 |
| *Missouri State | 4-3, 2-9 |
| *Wichita State | 1-0, 2-0 |
| Iowa | 0-4, 2-1 (9) |
| *Western Illinois | 1-4, 2-1 |
| *Bradley | 1-4, 1-3 |
| Gateway Conf. Tournament | |
| Indiana State | 2-3 (11) |
| S. Illinois | 2-3 (11) |

1986

| | |
|--------------------------|---------------|
| (20-29, 6-11 Gateway) | |
| Meredith Bakley (8th) | |
| Sooner Invitational | |
| Oklahoma State | 1-5 |
| Baylor | 0-1 (9) |
| Creighton | 0-1 |
| Oklahoma City | 1-3 |
| Missouri | 1-2 |
| Oklahoma City | 2-3 (8) |
| Missouri | 3-2 |
| Oklahoma City | 1-2 (9) |
| *Illinois State | 0-1, 2-1 |
| Redbird Invitational | |
| Indiana State | 0-1 |
| St. Francis | 10-0 (6) |
| Western Michigan | 0-7 |
| Drake | 4-3 (11) |
| Illinois State | 0-4 |
| Minn. St., Mankato | 1-0, 2-1 (10) |
| *Wichita State | 2-3 |
| *Missouri State | 2-1 |
| UNI-Dome Tournament | |
| *Wichita State | 0-1 |
| *Missouri State | 0-2 |
| Creighton | 0-1 |
| Bowling Green | 0-5 |
| Illinois-Chicago | 1-0 |
| Neb.-Omaha | 2-3 (11) |
| St. Ambrose | 5-0, 1-2 |
| Mt. Mercy | 2-1, 4-1 |
| Iowa | 4-2, 1-3 |
| *Southern Illinois | 0-1, 3-6 |
| *Eastern Illinois..... | 3-1 (14), 1-6 |
| Iowa State | 3-4, 0-7 |
| *Drake | 0-2, 4-0 |
| Wartburg | 9-3, 4-1 |
| *Bradley | 1-0, 1-4 |
| *Western Illinois | 5-3, 1-3 |
| Gateway Conf. Tournament | |
| Drake | 1-0 |
| Illinois State | 2-1 |
| Indiana State | 0-1 |
| Missouri State | 1-2 (8) |

1987

| | |
|--------------------------|-------------------|
| (29-23, 7-11 Gateway) | |
| Meredith Bakley (9th) | |
| Sooner Invitational | |
| Wichita State | 2-1 |
| New Mexico | 0-4 |
| Missouri | 1-3 |
| Iowa | 7-2 |
| Oklahoma | 1-8 (8) |
| Oklahoma City | 1-0 (9) |
| Creighton | 0-1 (8) |
| North Texas | 8-4, 6-4 |
| Redbird Invitational | |
| Ball State | 3-2 |
| Southern Illinois | 0-3 |
| Bradley | 0-3 |
| Minn. St., Mankato | 3-1, 2-0 |
| *Southern Illinois | 2-5, 6-1 |
| *Eastern Illinois | 0-5, 1-2 |
| *Wichita State | 0-1, 0-4 |
| *Missouri State | 0-4, 1-2 |
| UNI-Dome Invitational | |
| St. Cloud State | 1-0 |
| Nebraska-Omaha | 2-0 |
| North Dakota State | 3-2 (9) |
| Nebraska-Kearney | 5-0 |
| Illinois-Chicago | 2-0 |
| North Dakota | 7-9 (8) |
| St. Ambrose | 1-0, 3-4 |
| Luther | 2-1, 6-3 |
| *Indiana State | 3-0, 2-1 |
| *Illinois State | 0-3, 0-3 |
| Wartburg | 1-0 (8), 8-0 (6) |
| *Bradley | 3-1, 1-3 (11) |
| *W. Illinois | 1-9 (5), 12-4 (5) |
| *Drake | 8-0 (5), 16-1 (5) |
| Grand View | 2-1, 3-0 |
| Iowa | 0-3, 0-1 (8) |
| Gateway Conf. Tournament | |
| Indiana State | 1-0 |
| Eastern Illinois..... | 1-2 |
| Wichita State | 1-0 |
| Illinois State | 0-5 |

1988

| | |
|--------------------------|--------------|
| (35-25, 11-7 Gateway) | |
| Meredith Bakley (10th) | |
| Sooner Invitational | |
| Missouri | 1-2 |
| Texas-Arlington | 0-11 |
| Baylor | 2-1 (8) |
| Creighton | 4-5 (10) |
| Oklahoma | 10-2 |
| Wichita State | 3-1 |
| New Mexico | 2-1 |
| Illinois State | 0-9 (5) |
| North Texas | 9-1, 3-0 |
| Texas-Arlington | 1-0, 6-2 |
| Baylor | 0-1, 4-2 |
| Sam Houston State | 3-5, 0-3 |
| Stephen F. Austin | 1-0, 0-3 |
| Wartburg | 6-0, 7-0 (5) |
| Creighton Invitational | |
| Minnesota | 5-4 (11) |
| Creighton | 2-3 (10) |
| Minnesota | 0-1 |
| Creighton | 1-8 (6) |
| Minn. St., Mankato | 1-0 (8), 4-1 |

| | |
|--------------------------|---------------|
| Iowa State | 1-2, 3-5 |
| UNI-Dome Invitational | |
| Illinois-Chicago | 7-1 |
| Northern Illinois | 0-2 |
| Drake | 8-0 (6) |
| Green Bay | 8-0 (6) |
| Missouri | 3-2 |
| Green Bay | 3-0 |
| Augustana | 4-0 |
| Missouri Western | 3-0 |
| *Western Illinois | 1-2, 3-0 |
| *Bradley | 9-6, 2-0 |
| *Drake | 5-0, 2-0 |
| *Eastern Illinois | 4-5, 0-2 |
| *Southern Illinois | 2-3, 2-4 |
| *Illinois State | 0-2, 2-10 |
| *Indiana State | 2-0, 1-0 |
| Iowa | 1-3 (8), 3-9 |
| *Missouri St..... | 2-1, 10-2 (5) |
| *Wichita State | 4-1, 5-1 |
| Gateway Conf. Tournament | |
| Southern Illinois | 5-4 |
| Illinois State | 1-4 |
| Drake | 2-1 |
| Missouri State | 4-7 |

1989

| | |
|------------------------------|---------------|
| (33-26, 9-7 Gateway) | |
| Meredith Bakley (11th) | |
| Sooner Invitational | |
| Oklahoma State | 0-9 |
| Iowa | 1-9 |
| Sam Houston State | 0-4 |
| Wichita State | 4-0 |
| Texas-Arlington | 2-3 |
| Benedictine | 23-0 |
| Pittsburg State Invitational | |
| Missouri Western | 7-3 |
| Pittsburg State | 3-0 |
| Baker | 11-0 |
| Lincoln (Mo.) | 3-1 |
| Northeastern | 0-5 |
| Wichita State | 0-2 |
| Indiana State | 0-2, 0-3 |
| Houston Baptist | 8-1 |
| Stephen F. Austin | 0-1, 0-1 (8) |
| Iowa | 5-6, 1-2 (9) |
| Wartburg | 3-2, 15-1 |
| Minn. St., Mankato | 1-0, 2-4 (10) |
| Iowa State | 0-3, 0-6 |
| *Illinois State | 1-2, 0-3 |
| *Indiana State | 0-4, 2-4 |
| Winona State | 9-2, 4-1 |
| UNI-Dome Classic | |
| Drake | 3-1 |
| Wis.-Green Bay | 3-1 |
| Oklahoma City | 5-2 |
| DePaul | 2-4 |
| Loyola | 7-0 |
| St. Cloud State | 2-4 |
| *Western Illinois | 0-2, 3-1 |
| DePaul Invitational | |
| Drake | 6-0 |
| Wis.-Green Bay | 2-1 |
| Loyola | 4-0 |
| DePaul | 6-2 |
| Notre Dame | 2-0 |
| *Drake | 4-3, 5-2 |

| | |
|--------------------------|----------|
| *Eastern Illinois | 9-0, 5-1 |
| *Southern Illinois | 2-1, 3-4 |
| *Missouri State | 1-0, 3-2 |
| *Wichita State | 1-2, 5-0 |
| Gateway Conf. Tournament | |
| Wichita State | 0-5 |
| Missouri State | 6-0 |
| Bradley | 3-2 |
| Illinois State | 13-6 |
| Western Illinois | 2-5 |

1990

| | |
|--------------------------------|--------------------|
| (29-30, 3-13 Gateway) | |
| Meredith Bakley (12th) | |
| Florida State invitational | |
| Illinois State | 2-3 |
| Florida A&M | 5-4 (8) |
| Georgia State | 2-3 (10) |
| Indiana | 1-0 (10) |
| Missouri | 1-6 |
| Samford | 8-2 |
| Missouri | 0-6 |
| Princeton | 3-1, 8-0 |
| Florida State | 1-0, 2-4 |
| Southern Illinois Invitational | |
| Southern Illinois | 6-4 |
| Louisiana-Monroe | 3-2 |
| Wartburg | 4-1, 3-1 |
| Creighton Invitational | |
| Eastern Michigan | 5-13 |
| Northern Illinois | 2-3 |
| Illinois State | 4-9, 6-5 |
| DePaul | 2-5 |
| Creighton | 0-6 |
| Minn. St., Mankato | 2-1, 0-2 |
| Iowa State | 5-4, 6-5 |
| *Southern Illinois | 7-8, 0-5 |
| *Eastern Illinois | 2-4, 3-6 |
| Adelphi | 0-2, 5-4 |
| UNI-Dome Tournament | |
| St. Xavier | 3-2 |
| Metropolitan State | 5-2 |
| Wis.-Green Bay | 5-2 |
| Drake | 0-1 (8) |
| Illinois-Chicago | 3-2 |
| North Dakota | 17-3 |
| Augustana (S.D.) | 2-0 |
| Saginaw Valley | 0-2 |
| *Illinois State | 2-3, 1-3 |
| *Drake | 1-2, 1-7 |
| *Wichita State | 4-5, 3-4 |
| *Missouri State | 9-1, 1-2 |
| Minnesota | 3-0, 1-9 |
| *Bradley | 2-1 (10), 3-4 (16) |
| *Western Illinois | 2-1, 1-10 |
| Gateway Conf. Tournament | |
| Wichita State | 6-0 |
| Illinois State | 6-5 |
| Drake | 2-0 |
| Southern Illinois | 2-0 |
| Western Illinois | 3-2 |
| NCAA Northwest Regional | |
| UCLA | 0-2, 0-4 |

Year-By-Year Results

1991

| |
|-----------------------------------|
| (24-40, 6-11 Gateway) |
| Meredith Bakley (13th) |
| Metrodome Invitational |
| Missouri..... 2-7 |
| Minnesota-Duluth 2-0 |
| Concordia 9-8 |
| Minnesota 1-2 |
| Indiana 1-8 |
| Creighton..... 1-6 |
| Florida State Invitational |
| Florida A&M 3-0 |
| DePaul 5-4 |
| Furman 0-1 |
| Miami (Ohio).... 4-6, 1-8 (9) |
| Florida A&M 6-4, 1-5 |
| Florida State 1-3, 1-2 (8) |
| Southern Illinois Invitational |
| Ball State 7-3 |
| Bradley 4-9 |
| Southern Illinois 7-11 |
| Wartburg 1-3, 6-0 |
| Missouri Invitational |
| Drake 0-6 |
| Missouri 0-3 |
| Green Bay 4-3 (9) |
| DePaul 0-2 |
| Minnesota 1-5 |
| Minn., St., Mankato 4-2, 6-0 |
| *Indiana State 7-0, 2-7 |
| *Illinois State 3-9, 3-5 |
| *Wichita State ... 2-3 (10), 2-5 |
| *Missouri State 0-2, 0-4 |
| UNI-Dome Invitational |
| Saginaw Valley St. ... 5-4 (9) |
| Bradley 10-2 |
| St. Xavier 0-4 |
| Washburn 4-0 |
| Valparaiso 5-1 |
| Truman State 9-3 |
| Saginaw Valley St. 6-1 |
| Washburn 4-2 |
| Augustana (S.D.)..... 0-1 |
| Iowa State 3-5, 1-5 |
| *Southern Illinois ... 0-10, 0-5 |
| *Eastern Illinois 4-1, 0-4 |
| Luther 0-1, 6-8 |
| *Drake 7-4, 10-0 |
| Creighton Invitational |
| Drake 7-0 |
| Creighton 2-5 |
| Nebraska-Omaha . 0-3, 0-4 |
| Drake 0-4 (8) |
| *Bradley 0-1 |
| *Western Illinois 3-1, 3-7 |
| Gateway Conf. Tournament |
| Drake 2-4 |
| Missouri State 2-4 |

1992

| |
|-----------------------------------|
| (29-24-1, 4-11-1 Gateway) |
| Meredith Bakley (14th) |
| Saint Louis 4-5, 21-4 |
| Missouri-St. Louis 9-1, 3-5 |
| Austin Peay 6-0, 13-1 |
| Mercer 8-0, 10-1 |
| Florida A&M 9-1, 3-0 |

| |
|-----------------------------------|
| Florida State Invitational |
| Florida State 0-2 |
| Kent State 3-2 |
| South Florida 3-2 |
| Georgia State 5-3 |
| Furman 7-5 |
| Rutgers 7-5 |
| Kent State 1-7 |
| Wartburg 9-2, 12-5 |
| *Eastern Illinois 0-1, 9-19 |
| *Southern Illinois 3-5, 1-3 |
| UNI-Dome Invitational |
| Saginaw Valley 3-5 |
| Valparaiso 8-1 |
| Green Bay 7-1 |
| Loyola 6-4 |
| Illinois-Chicago 0-7 |
| St. Cloud State 6-4 |
| St. Xavier 3-7 |
| Wis.-Green Bay 1-12, 10-3 |
| Minn., St., Mankato 3-0 |
| *Missouri State ... 1-2, 4-5 (9) |
| *Wichita State 6-9, 0-3 |
| Iowa State 4-0, 1-3 |
| *Illinois State 0-2, 4-4 |
| Luther 2-1, 7-0 |
| *Western Illinois 1-0, 3-4 |
| *Bradley 3-1, 2-0 |
| Nebraska 2-5, 3-4 |
| *Drake 2-3 (11), 5-2 |
| Gateway Conf. Tournament.. |
| Southern Illinois 3-1 |
| Missouri State 3-4 |
| Southern Illinois 3-13 |

1993

| |
|-----------------------------------|
| (25-19, 8-8 MVC) |
| Meredith Bakley (15th) |
| Rutgers 2-4 |
| Adelphi 4-0 |
| Florida State 0-7 |
| Florida State Invitational |
| Kent State 6-1 |
| Connecticut 0-7 |
| Furman 0-11 |
| Louisana-Monroe... 4-3 (9) |
| Rider 7-2 |
| Toledo 6-2 |
| Southern Illinois Invitational |
| Ball State 4-3 |
| SE Missouri State..... 4-3 |
| Evansville 5-0 |
| Tennessee Tech 2-4 |
| UNI-Dome Invitational |
| St. Xavier 2-0 |
| Illinois-Chicago 2-6 |
| Saginaw Valley St. 9-1 |
| Loyola 10-3 |
| Valparaiso 10-1 |
| Missouri-St. Louis 5-8 |
| Minn., St., Mankato ... 3-2, 7-0 |
| *Tulsa 7-0, 5-0 |
| *Missouri State 1-0, 3-5 |
| Nebraska..... 5-6, 9-10 |
| *Illinois State 2-4, 3-7 |
| *Bradley 9-1, 7-6 |
| *Wichita State 8-9, 4-8 (8) |

| |
|-------------------------------|
| *Creighton 1-4, 1-3 |
| Iowa State..... 8-1, 7-1 |
| *Drake 4-3, 0-1 |
| *Indiana State 9-2, 4-0 |
| MVC Tournament |
| Creighton 2-5 |
| Tulsa 2-1 |
| Southern Illinois 0-6 |

1994

| |
|-----------------------------------|
| (40-21, 7-7 MVC) |
| Meredith Bakley (16th) |
| Missouri Invitational |
| Missouri 2-7 |
| Notre Dame 4-6, 0-7 |
| Missouri 5-3 |
| Saint Louis 9-0, 11-0 |
| McKendree 8-0, 12-2 |
| Florida State Invitational |
| Illinois-Chicago 5-3 |
| Miami (Ohio) 6-3 |
| Massachusetts 4-1 |
| Georgia State 0-1 (8) |
| Western Illinois 1-7 |
| Florida A&M 10-2, 6-2 |
| Eastern Illinois ... 1-2, 11-3 |
| Monmouth 4-0 |
| Central Connecticut 7-2 |
| West Florida 1-6 |
| Southern Illinois Invitational |
| Southern Illinois 1-2 |
| SE Missouri State..... 2-7 |
| Tennessee Tech 3-0 |
| Wartburg 8-0, 1-0 |
| Western Illinois Invitational |
| Green Bay 10-0 |
| Western Illinois 8-3 |
| UMKC 9-2 |
| Creighton 5-3 |
| DePaul 1-3 |
| Nebraska 0-8, 7-0 |
| UNI-Dome Invitational |
| St. Xavier 4-0, 2-0 |
| Wis.-Green Bay 4-0 |
| Northeast Illinois 5-0 |
| Loyola-Chicago 2-1 |
| Illinois-Chicago 4-3 (8) |
| Wisconsin-Parkside 9-6 |
| Augustana (S.D.) 1-9 |
| Minn., St., Mankato ... 3-1, 1-0 |
| *Southern Illinois 2-1, 5-2 |
| *Indiana State 2-3, 8-9 |
| Iowa State 3-0, 6-5 |
| *Wichita State 2-0, 3-10 |
| *Creighton 0-2, 13-7 |
| *Drake 2-0, 8-1 |
| *Tulsa 5-1, 1-3 |
| *Illinois State 0-6, 1-10 |
| MVC Tournament |
| Illinois State 3-2 |
| Drake 4-5 |
| Missouri State 1-4 |

1995

| |
|------------------------|
| (24-32, 5-15 MVC) |
| Meredith Bakley (17th) |
| Missouri Invitational |

| |
|------------------------------------|
| Indiana State..... 0-3 |
| Missouri 0-1 (8) |
| Purdue 1-2 (8) |
| Indiana State 7-6 |
| Florida State Invitational |
| Massachusetts 4-9 |
| Illinois-Chicago 0-7 |
| Indiana 3-2 |
| Eastern Illinois 0-4 |
| Furman 0-3 (8) |
| Florida A&M 10-4, 8-0 |
| Shawnee State 2-0, 9-4 |
| Central Conneticut... 6-1, 8-0 |
| Southern Illinois Invitational |
| Tennessee Tech 7-3 |
| Evansville 7-4 |
| Southern Illinois 8-7 |
| Eastern Illinois 4-3 |
| SE Missouri State..... 1-5 |
| Wartburg 9-0, 8-6 |
| Western Illinois Invitational |
| Indiana State 2-3 (9) |
| Western Illinois 1-7 |
| Indiana State 2-5 |
| Western Illinois 3-1 |
| *Indiana State 7-3, 3-4 |
| *Bradley 8-2, 4-3 |
| *Illinois State 0-5, 2-3 (8) |
| UNI-Dome Invitational |
| Drake 1-8 |
| Wisconsin-Parkside 7-3 |
| Augustana (S.D.) 2-4 |
| Nebraska 1-3 |
| St. Cloud State 2-1 (8) |
| Minn., St., Mankato .. 3-5 (9) |
| Iowa State..... 0-6, 0-3 |
| *Wichita State 2-6, 0-2 |
| *Creighton 5-4, 3-9 |
| Minn., St., Mankato ... 1-0, 2-1 |
| *Tulsa 3-10, 1-10 |
| *Missouri State 1-6, 3-4 |
| *Drake..... 0-5, 6-5 |
| *Southern Illinois..... 0-7, 1-6 |
| *Evansville..... 1-2, 4-6 |

1996

| |
|--------------------------------|
| (34-22, 11-9 MVC) |
| Meredith Bakley (18th) |
| Missouri Invitational |
| Indiana State 9-1 |
| Missouri 7-5 |
| St. Louis 4-0 |
| Missouri..... 2-4 |
| Saint Louis 6-0, 21-4 (5) |
| Missouri State Invitational |
| Drake 2-3 (8) |
| Missouri State..... 2-12 (5) |
| Kansas 3-2 |
| Florida State Invitational |
| Samford..... 7-1 |
| Georgia State 1-3 (9) |
| Michigan 0-13 (5) |
| Miami (Ohio)..... 3-5 |
| Illinois-Chicago 6-2 |
| Florida A&M 12-1, 10-1 |
| at Pensacola, Fla. |
| Central Conn. 10-0 (6), 7-1 |

| |
|-------------------------------------|
| Kent. Wesleyan..... 1-0 |
| Missouri Southern 0-2 |
| Southern Illinois Invitational |
| St Louis 9-1 |
| Southern Illinois 3-0 |
| Evansville 2-0 |
| Loyola-Chicago..... 2-1 |
| Coe 8-0, 11-0 |
| *Indiana State 8-0 (5), 3-0 |
| *Illinois State .. 0-8 (5), 0-8 (5) |
| *Bradley 0-1, 5-4 |
| *Wichita State 3-2 (8), 4-5 |
| *Creighton 3-0, 4-3 (9) |
| Nebraska..... 7-8, 3-7 |
| *Southern Ill. 7-2, 3-4 (12) |
| *Evansville 6-3, 5-0 |
| Minn., St., Mankato ... 5-6, 4-5 |
| *Tulsa 0-6, 4-3 |
| *Missouri St. 4-5 (10), 5-11 |
| Minnesota 4-2 |
| Iowa State..... 9-1, 7-6 |
| *Drake 0-6, 4-3 |
| MVC Tournament |
| Southern Illinois 0-2 |
| Tulsa 7-3 |
| Bradley 0-1 |

1997

| |
|--------------------------------|
| (29-29, 8-8 MVC) |
| Meredith Bakley (19th) |
| Missouri Invitational (2nd) |
| Indiana State 1-5 |
| Missouri 4-9, 1-11 |
| NE Illinois 17-3 |
| Missouri State Invitational |
| UMKC 8-5 |
| Drake 4-3 |
| Florida State Invitational |
| Louisiana Tech 2-1 |
| South Florida 0-3 |
| Furman 4-1 |
| Michigan State 9-3 |
| Massachusetts 1-2 |
| at Tallahassee, Fla. |
| Florida A&M 1-2, 2-3 |
| UMass 4-1, 5-10 |
| Long Island 14-2 |
| Connecticut 5-6 |
| Southern Illinois Invite (3rd) |
| SE Missouri State 0-1 |
| Southern Illinois 0-2 |
| St. Louis 14-2, 6-2 |
| Western Illinois Invite (2nd) |
| Butler..... 7-0 (Forfeit) |
| Western Illinois... 10-8, 6-4 |
| Drake 4-0 |
| Southern Illinois 0-1 |
| UMKC 8-0, 9-0 |
| *Bradley 7-9, 7-5 |
| UNI-Dome Invitational (1st) |
| St. Louis 22-0 |
| Valparaiso 9-2 |
| Bradley 4-2 |
| St. Louis 5-3 |
| Bradley 3-1 |
| Minnesota 0-2, 0-8 |
| *Wichita State 5-4, 6-0 |

Year-By-Year Results

*Missouri State 0-3, 14-0
Minn., St., Mankato 2-3
*Drake 0-2, 3-0
Nebraska 5-6, 4-6
*Indiana State 5-0, 10-0
*Illinois State 7-8, 2-11
Iowa State 5-6, 6-8
*Evansville 10-9, 3-5
*Southern Illinois 1-2, 2-7
MVC Tournament
Southern Illinois 3-4
Evansville 2-11

1998

(26-22, 11-7 MVC)
Meredith Bakley (20th)
Metrodome Invitational
Missouri 2-4
Kansas 1-3
Western Illinois 0-8 (6)
Minnesota 1-7, 3-7
Tenn.-Martin 21-3 (5),
..... 14-2 (5)
SE Missouri State 4-6, 5-6
Florida State Invitational
Florida State 0-3
Penn State 6-10
Robert Morris 4-2
Eastern Michigan 9-1 (5)
LSU 0-10 (6)
North Florida 8-0, 7-1
Missouri Invitational
SE Missouri State 1-3
Southern Illinois 2-1 (9)
St. Louis 7-2
Tennessee-Martin 9-3
UMKC 6-1, 3-0
*Missouri State 0-2, 4-0
*Wichita State 3-4, 4-2
Iowa State 1-2
*Creighton 2-0, 3-4
*Drake 6-5, 2-1
*Evansville 6-2, 0-1
*Southern Illinois 6-9, 4-5
Minnesota 3-2, 3-5
*Illinois State 1-0, 3-4
*Indiana State 6-2, 11-9 (9)
*Bradley 4-1, 4-0
MVC Tournament
Wichita State 8-0 (5)
Illinois State 2-1
Missouri State 2-6, 1-2
Evansville 1-0

1999

(32-22, 9-9 MVC)
Meredith Bakley (21st)
Missouri Quadrangular
St. Louis 9-1
Missouri 0-6
UMKC 7-1
Missouri 2-4
SE Missouri State Invitational
SE Missouri State 3-2
Harvard 0-1
Western Illinois 3-0
Florida State Invitational

Georgia State 4-2
Princeton 7-2
Penn State 2-3
Fresno State 0-4
Western Illinois 3-0
West Florida 1-4, 1-2
Missouri Invitational
Tulsa 4-0
Butler 4-0
Loyola-Chicago 5-3
Northwestern State 3-2
Indiana 0-7
Iowa State 3-7
Southern Illinois Invitational
Eastern Illinois 5-3
Southern Illinois 0-8
SE Missouri State 3-1
St. Louis 9-8
*Wichita State 8-9, 1-2
*Missouri State 3-2, 1-0
Iowa State 5-4, 5-3
*Illinois State 2-7, 0-4
*Indiana State 1-0, 15-3
*Creighton 4-3, 1-3
UMKC 4-2, 6-3
*Bradley 4-5, 9-0
Western Illinois 7-4, 1-7
*Drake 7-4, 4-3
*Southern Illinois 0-1, 5-6
*Evansville 4-2, 2-12
MVC Tournament
Southern Illinois 1-0
Creighton 0-2
Evansville 4-1
Missouri State 2-0
Illinois State 6-1
Creighton 3-5

2000

(28-32, 11-7 MVC)
Meredith Bakley (22nd)
Metrodome Invitational
Western Illinois 2-0
Alabama 5-6
Minnesota 3-7
Louisville 3-4
Missouri 3-4, 3-2
Alabama 0-8
Missouri Quadrangular
Western Illinois 5-4
UMKC 6-0
Missouri 3-4, 1-3
SE Missouri State Invitational
SE Missouri State 1-4
Iowa State 1-4
IUPUI 5-4
Western Kentucky 5-0
Missouri Invitational
Southern Illinois 0-2
Missouri 2-6
Georgia State 9-15
Southern Illinois 2-3
Georgia State 7-9
Missouri 8-6
Princeton 2-1, 3-4
Miami (Ohio) 2-1, 9-3
Florida State Invitational

Virginia Tech 1-4
Maryland 7-1
Bethune-Cookman 6-1
Florida State 2-6
Massachusetts 4-6
Southern Illinois Invitational
Southern Illinois 2-4
SE Missouri State 9-8
Western Kentucky 7-3
Syracuse 1-4
*Southern Illinois 0-2, 2-0
*Evansville 1-0, 5-3
UMKC 4-3, 6-3
*Bradley 5-0, 6-3
Minnesota 0-7, 0-4
*Wichita State 1-6, 7-2
*Missouri State 4-7, 1-2
*Drake 1-3, 5-3
*Creighton 7-2, 5-0
Iowa 0-3
*Indiana State 6-0, 9-1
*Illinois State 2-7, 2-4
MVC Tournament
Bradley 3-1
Illinois State 1-9
Creighton 1-4



SARA HAYES

2001

(25-33, 13-14 MVC)
Sara Hayes (1st)
Metrodome Invitational
Western Illinois 3-4 (8)
Minnesota 1-10
Louisville 2-4
Green Bay 2-5
Louisville 2-4
Wis.-Green Bay 10-0
Western Illinois 1-3
La.-Monroe Mardi Gras Classic
Southern Miss 1-5
SE Louisiana 3-1 (8)
Louisiana-Monroe 2-5
Virginia Tech 2-0
Drake 1-0
Southeast Missouri Classic
Buffalo 6-0
Missouri State 5-4
Western Kentucky 2-3
San Diego Invitational
BYU 1-7
Tulsa 6-2
Portland State 0-1
Boston College 3-1
UC San Diego 0-5, 4-3
*Missouri State 3-1 (8), 3-1
*Missouri State 5-3 (12)
*Southern Illinois 1-2, 5-2
*Southern Illinois 0-4
*Evansville 3-2, 1-3

*Evansville 1-2
Iowa 0-7, 1-4
Western Illinois 2-0, 5-10
*Creighton 3-12, 0-1
*Creighton 3-0
*Bradley 3-1, 2-1
*Wichita State 3-4, 2-3
*Wichita State 2-3
Minnesota 0-1, 0-2
*Drake 3-2, 5-4
*Drake 5-0
*Bradley 0-3
*Illinois State 0-2, 0-3
*Illinois State 1-3
*Indiana State 13-0, 4-1
*Indiana State 9-1
MVC Tournament
Evansville 0-6
Wichita State 9-1
Southern Illinois 1-3

2002

(33-26, 12-13 MVC)
Sara Hayes (2nd)
Ironkids Metrodome Classic
Green Bay 8-0 (6)
UMKC 7-0
Northern Illinois 1-0
Minnesota 4-2
Western Illinois 3-2
UMKC 2-3
Arizona Wildcat Invitational
Cal St.-Northridge 9-7
San Jose State 7-1 (8)
Arizona 2-12 (5)
Eastern Michigan 2-1 (8)
Drake 7-5
Louisville Cardinal Invitational
Toledo 6-3
Northwestern 0-3
Louisville 7-5
Kent State 0-3 (5)
National Invitational Tourn.
Buffalo 5-0
San Jose State 4-1
Arizona State 2-1
Long Beach State 1-3
California 1-6
*Southern Ill. 0-1 (10), 2-3 (8)
*Southern Illinois 0-1
IUPUI 4-1, 12-2
Eastern Illinois 8-3, 10-11
*Missouri State 3-2, 2-1
*Creighton 0-1, 1-7
*Creighton 3-0
*Bradley 5-0, 1-0
*Wichita State 2-3, 2-6
*Wichita State 3-9
Iowa State 4-5
*Drake 9-0, 4-8
*Drake 9-6
Minnesota 6-3, 0-7
Saint Louis 3-1, 8-6
*Indiana State 7-2, 7-0
*Indiana State 13-0
Iowa 0-8, 1-9
*Illinois State 1-8, 1-6
*Bradley 0-3

*Evansville 3-0, 2-10
*Evansville 6-5
MVC Tournament
Illinois State 2-1
Illinois State 2-3
Creighton 2-3



Christy Hebert

2003

(26-22, 10-14 MVC)
Christy Hebert (1st)
IRONKIDS Metrodome Classic
Western Illinois 8-1
Drake 2-3
Tulsa 2-6
Bradley 6-4
Green Bay 2-8
Northern Illinois 3-4
Houston Cougar Invitational
Pittsburgh 9-0
Stephen F. Austin 4-3
Sam Houston State 6-2
Texas Southern 10-1
Houston 1-6
Arizona Wildcat Invitational
San Diego State 0-7
New Mexico State 9-5
Arizona 0-8
Dutch Nat'l Team 3-4
New Mexico State 3-1
San Diego State Tournament
San Diego State 2-1
San Diego 2-1
Harvard 3-2
San Diego 5-2
Long Beach State 0-1
*Illinois State 2-3, 0-3
*Illinois State 6-7
Butler 14-7, 9-4
*Drake 1-2, 2-0
*Drake 3-0
*Indiana State 3-2, 2-1
*Indiana State 8-1
Iowa 9-7
*Missouri State 1-3, 0-2
*Wichita State 6-2, 6-5
*Wichita State 9-8
Minnesota 1-10
*Southern Illinois 11-0, 1-6
*Bradley 2-0, 2-0
*Creighton 0-11, 6-7
*Creighton 1-6
*Bradley 3-9
*Evansville 4-1, 4-5

2004

(17-32, 11-15 MVC)
Christy Hebert (2nd)
Hilton Plaza Cougar Invite
Baylor 2-9

Year-By-Year Results

| | |
|------------------------------|----------|
| Louisiana-Monroe | 6-5 |
| Sam Houston State..... | 1-2 |
| Houston..... | 0-3 |
| Texas A&M-CC | 0-1 |
| Kentucky Tournament | |
| Ball State | 5-1 |
| Kentucky | 0-1 |
| Youngstown State | 2-1 |
| Kentucky | 3-4 |
| Arizona Wildcat Invitational | |
| Indiana | 0-8 |
| Texas El-Paso | 3-0 |
| Georgia Tech | 0-7 |
| North Texas | 6-0 |
| Florida Atlantic Tournament | |
| Rhode Island | 2-3 |
| Florida Atlantic | 0-2 |
| Manhattan | 2-0 |
| Florida Atlantic | 0-2 |
| Florida Atlantic | 0-1 |
| Miami (Ohio) | 1-2 |
| *Southern Illinois..... | 1-5, 0-1 |
| *Southern Illinois | 1-4 |
| *Missouri State | 4-3, 4-5 |
| Iowa State | 0-8 |
| *Wichita State | 0-8, 3-0 |
| *Wichita State | 5-6 |
| *Creighton | 0-2, 3-7 |
| *Creighton | 4-3 |
| *Bradley | 1-7, 0-5 |
| Iowa State | 1-9 |
| *Evansville | 5-7, 5-6 |
| *Evansville..... | 4-1 |
| Iowa | 3-4 |
| Wisconsin | 2-6 |
| *Indiana State | 1-0, 3-2 |
| *Indiana State | 4-0 |
| Bradley | 2-1 |
| *Illinois State | 7-2, 2-4 |
| *Illinois State | 5-2 |
| *Drake..... | 3-7, 1-3 |
| *Drake | 9-8 |

2005

(22-25, 10-17 MVC)
Christy Hebert (3rd)

| | |
|------------------------------|----------|
| Minnesota Metrodome Classic | |
| Drake | 3-2 |
| Wis.-Green Bay | 8-1 |
| Minnesota | 1-3 |
| Tulsa | 2-1 |
| Western Illinois | 4-6 |
| Arizona Wildcat Invitational | |
| Hawaii | 1-3 |
| Marshall..... | 5-4 |
| National Invitational Tourn. | |
| Colorado State | 0-1 |
| Sacramento State | 0-7 |
| Rhode Island | 5-1 |
| Connecticut | 2-0 |
| San Jose State..... | 8-6, 8-1 |
| *Missouri State | 1-4, 4-2 |
| *Missouri State | 8-3 |
| *Southern Illinois | 5-9, 1-4 |
| *Southern Illinois..... | 1-2 |
| *Creighton | 0-3, 3-5 |
| *Creighton | 1-4 |

| | |
|-----------------------|------------|
| Iowa State | 5-3 |
| *Bradley | 10-3 |
| *Evansville..... | 0-3, 4-5 |
| *Evansville | 0-3 |
| *Bradley | 10-3, 3-1 |
| Iowa State | 5-4 |
| *Wichita State | 0-5, 1-8 |
| *Wichita State | 0-4 |
| South Dakota State.. | 7-1, 2-0 |
| *Indiana State | 1-0, 12-10 |
| *Indiana State | 7-2 |
| Wisconsin | 3-7, 3-4 |
| *Illinois State | 0-5, 9-8 |
| *Illinois State | 5-10 |
| *Drake | 0-3, 1-5 |
| *Drake | 7-3 |

2006

(12-38-1, 2-21 MVC)
Christy Hebert (4th)

| | |
|-----------------------------|-----------|
| Stetson Tournament | |
| #14 DePaul | 1-4 |
| Stetson..... | 5-7 |
| #14 DePaul | 0-5 |
| Charleston Southern .. | 4-4 |
| Charleston Southern .. | 6-1 |
| Bradley Invitational | |
| Northern Illinois | 3-4 |
| Western Illinois | 12-3 |
| Purdue | 1-6 |
| Northern Illinois | 4-1 |
| Best Western-Tulsa Festival | |
| Kansas | 2-15 |
| Tulsa..... | 1-7 |
| Stephen F. Austin | 5-3 |
| Notre Dame | 1-10 |
| #17 Nebraska..... | 2-11 |
| SEMO Spring Classic | |
| IUPUI..... | 2-0 |
| Lipscomb | 10-0 |
| SE Missouri St. | 3-9, 4-5 |
| UMKC | 5-2 |
| Missouri..... | 3-8, 4-6 |
| *Southern Illinois.... | 0-12, 5-6 |
| *Southern Illinois..... | 0-8 |
| Wartburg | 7-6 |
| *Missouri State | 1-7, 0-7 |
| *Missouri State | 6-10 |
| #19 Nebraska | 2-4 |
| *Creighton | 0-4, 1-2 |
| *Creighton | 8-6 |
| Iowa State..... | 1-2 |
| *Wichita State | 0-4, 2-4 |
| *Wichita State | 3-4 |
| Iowa State..... | 6-1 |
| *Drake..... | 2-3, 2-3 |
| South Dakota St. | 0-6, 9-0 |
| *Bradley | 3-4, 1-2 |
| *Indiana State | 4-3, 3-4 |
| *Indiana State | 0-1 |
| Iowa | 0-11 |
| *Bradley | 1-8 |
| *Evansville..... | 0-4, 3-10 |
| *Evansville..... | 0-2 |

2007

(19-32, 4-11 MVC)
Christy Hebert (5th)

| | |
|------------------------------|---------------|
| UNI-Dome Invitational | |
| North Dakota State | 5-6 |
| South Dakota State | 4-3 |
| Northern Illinois | 1-8 |
| Drake | 13-4 (5) |
| Schutt Showcase | |
| Bradley..... | 1-4 |
| Saint Louis | 0-2 |
| IUPUI..... | 8-0 |
| Saint Louis | 9-4 |
| Arkansas Invitational | |
| Louisiana-Monroe..... | 6-3 |
| Arkansas..... | 3-0 |
| Arkansas..... | 1-9 (6) |
| Louisiana-Monroe 2-1, | 6-3 |
| Arkansas..... | 5-6 |
| National Invitational Tourn. | |
| Santa Clara | 14-2 (5) |
| San Jose State | 3-6 |
| UC Davis | 0-2 |
| UC Riverside..... | 5-3 |
| #22 California | 5-6 |
| San Jose State | 3-5, 2-8 |
| Santa Clara | 4-1, 5-2 |
| *#17 Illinois State.8-11, | 4-12 (5) |
| *#17 Illinois State | 0-7 |
| *Drake..... | 4-6, 5-2 |
| *Drake | 2-8 |
| Iowa State..... | 3-6, 3-5 |
| *Missouri State | 6-1 |
| *Missouri State | 8-10 |
| North Dakota State .. | 2-4, 5-4 |
| *Wichita State | 0-7 |
| *Wichita State | 0-7, 10-5 |
| *Bradley | 9-5, 4-12 (6) |
| Western Illinois | 1-3, 6-2 |
| *#20 S. Illinois1-14 (5), | 2-10 (5) |
| *#20 S. Illinois..... | 5-10 (9) |
| Creighton | 0-3, 4-10 |
| Creighton | 0-10 (5) |
| Evansville..... | 2-8, 3-1 |
| Evansville..... | 1-5 |



2008

(20-28, 5-16 MVC)
Ryan Jacobs (1st)

| | |
|-------------------------------------|-----|
| UNI-Dome Invitational | |
| Dayton | 7-5 |
| South Dakota State | 3-4 |
| South Dakota State | 7-2 |
| North Dakota State | 3-0 |
| Metrodome Softball Classic | |
| Tennessee Tech..... | 6-2 |
| Western Illinois | 4-3 |
| Arkansas..... | 3-0 |
| Minnesota..... | 6-4 |
| UT-Martin Hospitality House Classic | |

| | |
|------------------------------|------------|
| Minnesota..... | 0-1 |
| Indiana State..... | 6-7 |
| Dartmouth | 5-8 |
| Ball State | 1-0 |
| Tennessee-Martin | 10-2 |
| National Invitational Tourn. | |
| San Jose State | 4-3 |
| Nevada..... | 3-4 |
| Boston College..... | 2-6 |
| Tennessee State..... | 0-4 |
| California..... | 0-2 |
| *Southern Illinois..... | 3-4 |
| *Southern Illinois..... | 1-7, 1-6 |
| Iowa State..... | 3-6, 6-3 |
| *Creighton | 2-4, 6-11 |
| *Creighton | 0-1 |
| Nebraska..... | 2-1, 2-6 |
| *Bradley | 2-0, 6-2 |
| *Drake..... | 1-10, 7-15 |
| *Drake..... | 10-11 |
| *Wisconsin | 3-0 |
| *Missouri State | 7-0 |
| *Indiana State | 3-5, 3-7 |
| *Indiana State | 4-11 |
| North Dakota State .. | 4-1, 1-0 |
| Iowa..... | 4-5 |
| *Wichita State | 0-2, 6-1 |
| *Wichita State | 2-5 |
| *Illinois State | 5-4, 6-8 |
| *Illinois State | 2-15 |

2009

(34-22, 15-11 MVC)
Ryan Jacobs (2nd)

| | |
|--------------------------------------|---------------|
| UNI-Dome Invitational | |
| Dayton | 14-6 (6) |
| North Dakota..... | 11-9 |
| Nebraska..... | 1-2 |
| Metrodome Softball Classic | |
| Western Illinois | 6-0 |
| Minnesota..... | 0-4 |
| Green Bay..... | 8-4 |
| Drake | 3-2 (8) |
| Arkansas..... | 7-0 |
| LSU Easton Purple and Gold Challenge | |
| LSU | 2-3 (8) |
| UAB | 11-2 (5) |
| Texas State..... | 2-0 |
| Texas State..... | 0-3 |
| UAB | 5-4 (11) |
| Kansas Jayhawk Classic | |
| Kansas..... | 8-5 |
| North Dakota State | 5-1 |
| Eastern Illinois | 9-0 |
| Kansas..... | 9-6 |
| at Missouri..... | 1-2 |
| *at Missouri State .12-5, | 11-5 |
| *at Missouri State | 11-4 |
| at Oklahoma..... | 0-8 |
| at Oklahoma State..... | 1-9 (5) |
| *Southern Illinois.3-2, | 6-5 (8) |
| *Southern Illinois..... | 0-4 |
| at Iowa State..... | 6-4 |
| North Dakota State. 4-2, | 2-12 (5) |
| *Bradley | 8-9, 3-7 |
| *at Evansville..... | 9-0, 10-6 (8) |
| at Evansville..... | 2-1 (10) |
| *vs. Creighton | 1-5, 0-1 |
| at Wisconsin..... | 9-0 (5), 8-0 |
| *Wichita State | 7-0, 7-5 |

| | |
|--------------------------|------------------|
| *Wichita State | 2-3 |
| *at Bradley..... | 1-0 |
| *Indiana State | 0-4, 1-2 (8) |
| *Indiana State | 4-3 |
| Iowa | 3-5 |
| at Nebraska | 2-7, 6-3 |
| *at Illinois State | 3-4, 4-7 |
| *at Illinois State | 5-4 |
| *at Drake..... | 2-1 (8), 9-1 (6) |
| *at Drake..... | 1-2 (10) |
| MVC Tournament | |
| at Bradley..... | 2-4 |

2010

(28-25, 13-12 MVC)
Ryan Jacobs (3rd)

| | |
|-------------------------------|---------------|
| UNI-Dome Invitational | |
| Dayton | 10-0 |
| North Dakota..... | 13-6 |
| Green Bay..... | 4-5 |
| South Dakota | 10-1 |
| Austin Peay Classic | |
| IUPUI..... | 5-0 |
| Austin Peay..... | 10-0 |
| IUPUI..... | 7-2 |
| Tennessee State..... | 10-2 |
| Chattanooga..... | 1-2 |
| at Arizona | 1-4 |
| Perigona State DeMarini Chal- | |
| Samford..... | 7-11 (10) |
| Arizona State | 0-10 |
| Idaho State | 2-0 |
| Creighton..... | 0-4 |
| at Missouri..... | 0-3 |
| Oklahoma Spring Festival | |
| Utah | 5-3 |
| Oklahoma..... | 1-11 |
| Utah | 9-6 |
| Oklahoma | 1-11 |
| at Oklahoma State..... | 0-8, 5-7 |
| at Tulsa..... | 8-0 |
| *at Wichita State | 5-3 |
| *at Indiana State .. | 6-3, 1-0 (9) |
| *at Indiana State | 10-4 |
| *Illinois State | 1-9 |
| *Illinois State | 9-11, 3-5 |
| South Dakota State..... | 5-4 (9) |
| *at Bradley..... | 10-2 (5), 9-2 |
| *Drake..... | 1-5, 1-3 |
| *Drake..... | 1-0 |
| Iowa State..... | 0-6 |
| *at Creighton | 2-8, 3-4 |
| *at Creighton | 0-8 |
| *Bradley | 9-2 |
| *Evansville..... | 10-6, 9-0 (5) |
| *Evansville..... | 12-2 |
| at Nebraska | 5-3 |
| at Iowa | 8-7 (8) |
| *at Southern Illinois.. | 0-8, 0-1 |
| *at Southern Illinois..... | 1-4 |
| *Missouri State | 6-2, 1-2 |
| *Missouri State | 4-2 |
| MVC Tournament | |
| vs. Missouri State | 3-4 |

Year-By-Year Results

2011

(32-25, 16-12 MVC)

Ryan Jacobs (4th)

UNI-Dome Invitational

South Dakota 11-0
North Dakota 9-1
Green Bay 8-7
UTEP 3-2
South Dakota 8-0

Chattanooga Tournament

UT-Martin 0-2
Tennessee Tech 5-4 (8)
Northwestern State 0-1
Chattanooga 3-10
IUPUI 7-1

Arizona State DeMarini Challenge

Northern Colorado 11-0
Arizona State 1-6
East Carolina 1-4
Creighton 5-3
New Mexico State 2-4

Oklahoma State Mizuno Classic

Northern Colorado 13-5 (5)
Oklahoma State 0-7
Minnesota 0-1
Northern Colorado 6-3
at Tulsa 1-5

vs. Indiana 5-1

vs. North Dakota State 3-4

vs. Minnesota 1-8

*at Missouri State 3-1, 5-6

*at Missouri State 2-3

*at Evansville 6-2

*at Evansville 8-0, 3-2

Iowa State 4-2

*Southern Illinois 1-0, 2-6

*Southern Illinois 9-5

at Iowa State 3-11

at South Dakota St. 10-1, 7-6

*Illinois State 4-7, 2-3

*Illinois State 1-0

Missouri 2-7

*at Drake 2-3, 2-3

*at Drake 0-7

*Creighton 3-0, 3-4

*Creighton 7-2

*Bradley 7-3, 8-3

*Wichita State 2-1, 10-6

*Wichita State 3-5

*Indiana State 8-0, 1-0

*Indiana State 7-0

MVC Tournament

at Missouri State 0-2

2012

(38-16, 21-4 MVC)

Ryan Jacobs (5th)

UNI-Dome Invitational (Ames, Iowa)

vs. Valparaiso 6-0
vs. North Dakota 4-8 (9)
vs. Green Bay 9-1 (5)
vs. Nebraska-Omaha 3-2
vs. Western Illinois 1-4

Memphis Tiger Invitational

Missouri State 5-3

Western Illinois 5-0

Memphis 3-2

Southeast Missouri State 2-1

Miami (Ohio) 0-2

Colorado State Classic

Weber State 10-12

Colorado State 8-2

Weber State 8-0 (6)

Colorado State 13-16

Saint Mary's 8-2

USF Under Armour Classic

Boston 1-0

Central Connecticut St. 1-2

Long Island 1-5

Canisius 8-0 (5)

Rutgers 4-0

at North Florida 4-5, 2-3 (8)

at Stetson 8-0 (5)

*Evansville 8-1, 8-0 (5)

*Evansville 1-0

*at Indiana State 11-1 (5), 7-0

*at Indiana State 7-5 (8)

at Iowa State 8-0 (5)

*at Wichita State 8-6, 6-5

*at Wichita State 4-2

at Western Illinois 8-0 (5)

*Drake 5-1, 3-2

*Drake 11-2 (5)

#9 Missouri 1-3

*at Creighton 5-4

*at Creighton 15-3 (5)

*at Bradley 8-1, 3-9

*Missouri State 5-1 (9), 7-6

*Missouri State 0-1 (8)

*Bradley 4-1

at Iowa 4-3 (8), 0-7

*at Southern Illinois 2-0, 1-7

*at Southern Illinois 5-0

*Illinois State 0-1, 3-0

MVC Tournament

at Southern Illinois 0-1

2013

(27-26, 13-8 MVC)

Ryan Jacobs (6th)

UNI-Dome Invitational

#1 Alabama 1-8

North Dakota State 5-2

Green Bay 8-2

Illinois 0-8 (6)

Drake 0-6

Littlewood Classic

vs. Illinois-Chicago 8-0

at #3 Arizona State 3-5

vs. Minnesota 0-5

vs. Minnesota 1-3

vs. Michigan State 0-1

Central Arkansas Tournament

vs. Grambling 13-4 (5)

at Central Arkansas 3-4 (8)

vs. Ball State 3-9

at Central Arkansas 2-16 (5)

Ark.-Pine Bluff 6-0

Woo Pig Classic

vs. Jacksonville State 1-10 (6)

at Arkansas 0-8 (5)

vs. Wright State 2-1

at Arkansas 1-17 (5)

vs. Wright State 1-0

Mizuno Classic

vs. Cleveland State 6-2

at Oklahoma State 0-1

vs. Santa Clara 9-1 (5)

vs. Cleveland State 4-5

vs. Santa Clara 2-1

*at Missouri State 4-3, 2-8

*Southern Illinois 4-3, 2-1

*at Creighton 1-4, 1-11 (5)

*at Creighton 2-4

*at Evansville 4-3, 5-7

*at Evansville 3-4 (9)

*Wichita State 3-2, 7-1

*Indiana State 9-4, 4-1

*Indiana State 8-1

*Bradley 7-1, 4-1

Iowa 1-10 (5)

*at Illinois State 1-4, 0-1

*at Illinois State 9-3

*at Bradley 8-0 (6)

MVC Tournament

vs. Southern Illinois 6-4

at Creighton 1-0

vs. Evansville 2-1

NCAA Regional

at #17 Nebraska 0-4

vs. #24 Tulsa 2-1

vs. #13 Stanford 1-4

2014

(28-20, 14-12 MVC)

Ryan Jacobs (7th)

Louisiana-Lafayette Invite

vs. North Carolina 8-7

at #13 La.-Lafayette 8-10 (8)

vs. Purdue 6-3

vs. #10 Texas 6-3

North Texas Invite

vs. Southern Univ. 15-0 (5)

vs. Nicholls State 4-3

at North Texas 6-8

vs. Nicholls State 8-0 (5)

at North Texas 6-7

Florida State Invite

vs. Florida A&M 4-1

vs. UC Santa Barbara 1-15

vs. UC Santa Barbara 2-3 (8)

vs. Charleston South 9-4

WKU Hilltopper Classic

vs. Wright State 5-2

at Western Kentucky 6-3

vs. IUPUI 3-2

vs. Green Bay 1-3

*at Southern Ill. 2-1 (10), 5-4

vs. SIU Edwardsville 6-1

*vs. Illinois State 3-4 (9), 4-9

*vs. Illinois State 3-1

*Evansville 7-4, 10-2 (5)

*Evansville 0-7

Iowa State 9-0 (6)

*at Indiana State 2-0, 5-2

*at Indiana State 9-5

at #19 Nebraska 0-4

*at Wichita State 4-9, 0-8 (6)

*at Wichita State 0-6 (5)

*Drake 1-4, 6-0

*Missouri St. 10-0 (5), 9-1 (5)

*at Drake 1-7

*at Bradley 2-1, 0-1

*at Bradley 2-5

at Iowa 9-8

*Loyola 2-5, 4-2

*Loyola 2-0

MVC Tournament

vs. Missouri State 3-4

2015

(22-28, 15-10 MVC)

Ryan Jacobs (8th)

UNI-Dome Invitational

Southern Utah 7-6

Iowa 4-12 (5)

Green Bay 0-1, 15-11

North Dakota State 4-2

Drake 1-7

Houston Tournament

vs. DePaul 1-7

at Houston 2-5

vs. Stephen F. Austin 3-0

vs. McNeese State 1-4

vs. UMass 5-3

Diamond 9 Citrus Classic

vs. UAB 1-3

vs. Columbia 3-4

vs. Lehigh 0-2

vs. Maryland 0-10 (5)

Tennessee Tournament

vs. N. Dakota St. 4-12 (6)

at #11 Tennessee 4-5

vs. Purdue 3-1

vs. Indiana State 1-7

vs. Purdue 2-3

*at Illinois State 6-4, 3-5

*at Illinois State 3-5

*at Loyola 11-0 (5), 2-1

*at Southern Ill. 8-0 (6), 9-1 (5)

at Iowa State 4-12 (5)

*Wichita State 4-3, 1-4

*Wichita State 3-6

*Bradley 5-1, 3-7

*Bradley 4-8

*at Drake 3-1, 2-6

*at Evansville 7-0, 8-7

*Drake 3-2

*at Missouri St. 15-8, 3-4 (11)

*at Missouri St. 4-6

Nebraska-Omaha 8-0 (6)

at #11 Missouri 2-4, 9-10

*Indiana St. 4-3 (9), 9-1 (6)

MVC Tournament

vs. Illinois State 2-8

Opponent Results (Through 2015)

| Team | Record | Last | Team | Record | Last | Team | Record | Last |
|----------------------------|-------------|------|------------------------------|-------------|------|-----------------------------|-------------|------|
| Adelphi | 2-1 | 1993 | Graceland | 6-1 | 1976 | Nebraska | 4-19 | 2014 |
| Alabama | 0-3 | 2013 | Grambling | 1-0 | 2013 | Nebraska-Kearney | 2-1 | 1987 |
| Arizona | 2-5 | 2010 | Grand View | 16-9 | 1987 | Nebraska-Omaha | 11-6 | 2015 |
| Arizona State | 1-5 | 2013 | Harvard | 1-1 | 2003 | New Mexico | 1-1 | 1988 |
| Arkansas | 3-4 | 2013 | Hawaii | 0-1 | 2005 | New Mexico State | 2-1 | 2011 |
| Arkansas-Pine Bluff | 1-0 | 2013 | Houston | 0-3 | 2015 | Nevada | 0-1 | 2008 |
| Augustana (S.D.) | 3-3 | 1995 | Houston Baptist | 1-0 | 1989 | Nicholls State | 2-0 | 2014 |
| Austin Peay | 3-0 | 2010 | Idaho State | 1-0 | 2010 | North Carolina | 1-0 | 2014 |
| Baker | 1-0 | 1989 | Illinois | 0-1 | 2013 | North Dakota | 5-2 | 2012 |
| Ball State | 5-1 | 2013 | Illinois-Chicago | 8-3 | 2013 | North Dakota State | 9-5 | 2015 |
| Baylor | 2-3 | 2004 | Illinois State | 20-72-12015 | | North Florida | 2-2 | 2012 |
| Benedictine | 1-0 | 1989 | Indiana | 3-6 | 2011 | North Texas | 6-2 | 2014 |
| Bethune-Cookman | 1-0 | 2000 | Indiana-Purdue (IUPUI) | 9-0 | 2014 | Northeastern | 0-1 | 1987 |
| Boston College | 1-1 | 2008 | Indiana State | 58-26 | 2015 | Northeastern Illinois | 2-0 | 1997 |
| Boston Univ. | 1-0 | 2012 | Iowa | 24-29 | 2015 | Northeast Louisiana | 2-0 | 1993 |
| Bowling Green | 0-1 | 1986 | Iowa State | 38-38-12015 | | Northern Arizona | 1-0 | 1982 |
| Bradley | 50-33 | 2015 | Iowa Wesleyan | 2-0 | 1979 | Northern Colorado | 4-3 | 2011 |
| Brigham Young | 0-1 | 2001 | Jacksonville State | 0-1 | 2013 | Northern Illinois | 2-5 | 2007 |
| Buena Vista | 1-0 | 1974 | Kansas | 5-4 | 2009 | Northern State (S.D.) | 1-0 | 1976 |
| Buffalo | 2-0 | 2002 | Kansas State | 0-1 | 1975 | NW Missouri State | 2-0 | 1982 |
| Butler | 4-0 | 2003 | Kent State | 3-2 | 2002 | Northwestern | 2-1 | 2002 |
| California | 0-3 | 2008 | Kentucky | 0-2 | 2004 | Northwestern (Iowa) | 3-1 | 1982 |
| Cal State Northridge | 1-0 | 2002 | Kentucky Wesleyan | 1-0 | 1996 | Northwestern State | 2-1 | 2011 |
| Canisius | 1-0 | 2012 | Lehigh | 0-1 | 2015 | Notre Dame | 1-3 | 2006 |
| Central (Iowa) | 3-0 | 1980 | Lincoln (Mo.) | 1-0 | 1989 | Oklahoma | 2-6 | 2010 |
| Central Arkansas | 0-2 | 2013 | Lipscomb | 1-0 | 2006 | Oklahoma Baptist | 5-3 | 1985 |
| Central Connecticut | 5-1 | 2012 | Long Beach State | 0-2 | 2003 | Oklahoma City | 7-4-1 | 1989 |
| Central Michigan | 2-3 | 1985 | Long Island | 1-1 | 2012 | Oklahoma State | 0-9 | 2013 |
| Central Oklahoma | 1-1 | 1984 | Loras | 12-3 | 1983 | Penn State | 0-2 | 1999 |
| Charleston Southern | 2-0-1 | 2014 | Louisiana-Lafayette | 0-1 | 2014 | Pittsburgh | 1-0 | 2003 |
| Chattanooga | 0-2 | 2011 | Louisiana-Monroe | 6-1 | 2007 | Pittsburg State | 2-0 | 1989 |
| Clarke | 2-0 | 1980 | Louisiana State | 0-2 | 2009 | Portland State | 0-1 | 2001 |
| Cleveland State | 1-1 | 2013 | Louisiana Tech | 1-0 | 1997 | Princeton | 4-2 | 2005 |
| Coe | 2-0 | 1996 | Louisville | 1-3 | 2002 | Purdue | 2-3 | 2015 |
| Colorado State | 3-2 | 2012 | Loyola (Ill.) | 11-1 | 2015 | Rhode Island | 1-1 | 2005 |
| Columbia | 0-1 | 2015 | Luther | 29-8 | 1992 | Rider | 1-0 | 1993 |
| Concordia | 1-0 | 1991 | McKendree | 2-0 | 1994 | Robert Morris | 1-0 | 1998 |
| Connecticut | 1-2 | 2005 | Manhattan | 1-0 | 2004 | Rutgers | 2-1 | 2012 |
| Creighton | 19-52 | 2013 | Mankato State | 22-6 | 1997 | Sacramento State | 0-1 | 2005 |
| Dayton | 3-0 | 2010 | Marshall | 1-0 | 2005 | Saginaw Valley State | 3-2 | 1993 |
| Dartmouth | 0-1 | 2008 | Maryland | 1-1 | 2015 | Saint Louis | 17-2 | 2007 |
| DePaul | 2-7 | 2015 | Massachusetts | 3-4 | 2015 | Saint Mary's | 1-0 | 2012 |
| Drake | 65-48 | 2015 | McNeese State | 0-1 | 2015 | Sam Houston State | 1-4 | 2004 |
| East Carolina | 0-1 | 2011 | Memphis | 1-0 | 2012 | Samford | 2-1 | 2010 |
| Eastern Illinois | 14-15 | 2009 | Mercer | 2-0 | 1992 | San Diego | 4-0 | 2003 |
| Eastern Michigan | 2-1 | 2002 | Metropolitan State | 1-0 | 1990 | San Diego State | 0-1 | 2003 |
| Emporia State | 0-1 | 1979 | Miami (Ohio) | 3-5 | 2012 | San Jose State | 5-3 | 2008 |
| Evansville | 36-24 | 2015 | Michigan | 0-1 | 1996 | Santa Clara | 5-0 | |

Yearly Leaders

Batting Leaders

Hits

| | | |
|-----------|---------|------------------|
| 2015..... | 50..... | Rikki Alcaraz |
| 2014..... | 50..... | Two Tied |
| 2013..... | 47..... | Caitlin Wnek |
| 2012..... | 71..... | Mackenzie Daigh |
| 2011..... | 55..... | Mackenzie Daigh |
| 2010..... | 55..... | Jen Larsen |
| 2009..... | 70..... | Megan Machovec |
| 2008..... | 56..... | Megan Machovec |
| 2007..... | 45..... | Jen Larsen |
| 2006..... | 40..... | Two Tied |
| 2005..... | 55..... | Jamie Kelling |
| 2004..... | 45..... | Erin Strellner |
| 2003..... | 44..... | Erin Strellner |
| 2002..... | 83..... | Lindsay Wood |
| 2001..... | 58..... | Lindsay Wood |
| 2000..... | 77..... | Lindsay Wood |
| 1999..... | 56..... | Kylie Sloan |
| 1998..... | 56..... | Jackie Paulus |
| 1997..... | 66..... | Jody Dean |
| 1996..... | 54..... | Two Tied |
| 1995..... | 54..... | Jaye Donlea |
| 1994..... | 61..... | Heather Daters |
| 1993..... | 49..... | Heather Daters |
| 1992..... | 64..... | Deena Chipp |
| 1991..... | 58..... | Deena Chipp |
| 1990..... | 56..... | Vicki White |
| 1989..... | 65..... | Chris Ehlert |
| 1988..... | 64..... | Chris Ehlert |
| 1987..... | 48..... | Chris Ehlert |
| 1986..... | 41..... | Julie Schroeder |
| 1985..... | 54..... | Paula Evers |
| 1984..... | 36..... | Two Tied |
| 1983..... | 50..... | Laurie Magee |
| 1982..... | 53..... | Laurie Magee |
| 1981..... | 34..... | Betty Thronson |
| 1980..... | 37..... | Jocelyn Drabelle |
| 1979..... | 29..... | Jocelyn Drabelle |
| 1978..... | 34..... | Sue Coakley |

Doubles

| | | |
|-----------|---------|-------------------|
| 2015..... | 12..... | Caitlin Wnek |
| 2014..... | 14..... | Rikki Alcaraz |
| 2013..... | 14..... | Caitlin Wnek |
| 2012..... | 18..... | Mackenzie Daigh |
| 2011..... | 14..... | Rachel Gerking |
| 2010..... | 11..... | Mackenzie Daigh |
| 2009..... | 14..... | Rachel Gerking |
| 2008..... | 11..... | Stephanie Aguerro |
| 2007..... | 12..... | Stephanie Aguerro |
| 2006..... | 8..... | Rachael Rogers |
| 2005..... | 9..... | Jamie Kelling |
| 2004..... | 14..... | Erin Strellner |
| 2003..... | 9..... | Erin Strellner |
| 2002..... | 14..... | Stacey Sampson |
| 2001..... | 13..... | Lindsay Wood |
| 2000..... | 16..... | Two Tied |
| 1999..... | 19..... | Kylie Sloan |
| 1998..... | 11..... | Two Tied |
| 1997..... | 14..... | Kristen Dalrymple |
| 1996..... | 13..... | Stacy Weber |
| 1995..... | 11..... | Two Tied |
| 1994..... | 14..... | Heather Daters |
| 1993..... | 10..... | Deena Chipp |
| 1992..... | 13..... | Deena Chipp |
| 1991..... | 8..... | Vicki White |
| 1990..... | 18..... | Vicki White |
| 1989..... | 13..... | Chris Ehlert |
| 1988..... | 13..... | Chris Ehlert |
| 1987..... | 13..... | Susan Mahoney |
| 1986..... | 5..... | Julie Schroeder |
| 1985..... | 16..... | Pam Phipps |
| 1984..... | 4..... | Two Tied |
| 1983..... | 8..... | Marla Peterson |
| 1982..... | 12..... | Jane Wagner |
| 1981..... | 4..... | Three Tied |
| 1980..... | 5..... | Jocelyn Drabelle |
| 1979..... | 6..... | Jocelyn Drabelle |
| 1978..... | 7..... | Sue Coakley |

Triples

| | | |
|-----------|---------|-------------------|
| 2015..... | 3..... | Micalla Rettinger |
| 2014..... | 2..... | Two Tied |
| 2013..... | 0..... | None |
| 2012..... | 3..... | Three Tied |
| 2011..... | 1..... | Four Tied |
| 2010..... | 6..... | Megan Machovec |
| 2009..... | 6..... | Megan Machovec |
| 2008..... | 5..... | Megan Machovec |
| 2007..... | 2..... | Mandy Kumamoto |
| 2006..... | 3..... | Rachael Rogers |
| 2005..... | 3..... | Two Tied |
| 2004..... | 2..... | Rachael Rogers |
| 2003..... | 2..... | Three Tied |
| 2002..... | 4..... | Lindsay Wood |
| 2001..... | 2..... | Lindsay Wood |
| 2000..... | 6..... | Lindsay Wood |
| 1999..... | 5..... | Angie Schreurs |
| 1998..... | 8..... | Amber Sampson |
| 1997..... | 9..... | Amber Sampson |
| 1996..... | 4..... | Jackie Paulus |
| 1995..... | 5..... | Jen Dean |
| 1994..... | 6..... | Stacy Weber |
| 1993..... | 4..... | Three Tied |
| 1992..... | 11..... | Laura Novotny |
| 1991..... | 5..... | Two Tied With |
| 1990..... | 7..... | Jenny Schultz |
| 1989..... | 4..... | Lynell O'Connor |
| 1988..... | 9..... | Lynell O'Connor |
| 1987..... | 6..... | Chris Ehlert |
| 1986..... | 5..... | Julie Schroeder |
| 1985..... | 5..... | Pam Phipps |

Home Runs

| | | |
|-----------|---------|-------------------|
| 2015..... | 10..... | Rikki Alcaraz |
| 2014..... | 9..... | Chelsea Ross |
| 2013..... | 8..... | Nicole Fisher |
| 2012..... | 9..... | Whitney Plein |
| 2011..... | 10..... | Courtney Dunker |
| 2010..... | 14..... | Courtney Dunker |
| 2009..... | 12..... | Kelly Papesh |
| 2008..... | 7..... | Jen Larsen |
| 2007..... | 10..... | Ashley Lepley |
| 2006..... | 7..... | Rachael Rogers |
| 2005..... | 5..... | Tracy Davis |
| 2004..... | 9..... | Rachael Rogers |
| 2003..... | 14..... | Angela Higgins |
| 2002..... | 11..... | Lindsay Wood |
| 2001..... | 3..... | Two Tied |
| 2000..... | 9..... | Kylie Sloan |
| 1999..... | 7..... | Kylie Sloan |
| 1998..... | 12..... | Jody Dean |
| 1997..... | 12..... | Jody Dean |
| 1996..... | 5..... | Jody Dean |
| 1995..... | 4..... | Stacy Weber |
| 1994..... | 8..... | Jen Dean |
| 1993..... | 7..... | Deena Chipp |
| 1992..... | 4..... | Deena Chipp |
| 1991..... | 8..... | Deena Chipp |
| 1990..... | 2..... | Deena Chipp |
| 1989..... | 1..... | Four Tied |
| 1988..... | 2..... | Susan Mahoney |
| 1987..... | 2..... | Chris Ehlert |
| 1986..... | 1..... | Two Tied |
| 1985..... | 1..... | Three Tied |
| 1984..... | 1..... | Terri Heisterkamp |
| 1983..... | 3..... | Marla Peterson |
| 1982..... | 6..... | Marshelle Clark |
| 1981..... | 2..... | Laurie Magee |
| 1980..... | 1..... | Jocelyn Drabelle |
| 1978..... | 2..... | Three Tied |

Batting Average

| | | |
|-----------|-----------|-------------------|
| 2015..... | .329..... | Rikki Alcaraz |
| 2014..... | .345..... | Rikki Alcaraz |
| 2013..... | .317..... | Micalla Rettinger |
| 2012..... | .384..... | Mackenzie Daigh |
| 2011..... | .359..... | Mackenzie Daigh |
| 2010..... | .355..... | Jen Larsen |
| 2009..... | .366..... | Rachel Gerking |
| 2008..... | .366..... | Megan Machovec |
| 2007..... | .326..... | Jen Larsen |
| 2006..... | .282..... | Nikki Ferden |

| | | |
|-----------|-----------|-------------------|
| 2005..... | .366..... | Erin Strellner |
| 2004..... | .292..... | Erin Strellner |
| 2003..... | .303..... | Erin Strellner |
| 2002..... | .446..... | Lindsay Wood |
| 2001..... | .331..... | Lindsay Wood |
| 2000..... | .362..... | Lindsay Wood |
| 1999..... | .357..... | Kylie Sloan |
| 1998..... | .393..... | Jody Dean |
| 1997..... | .382..... | Jody Dean |
| 1996..... | .323..... | Angie Schreurs |
| 1995..... | .320..... | Kristen Dalrymple |
| 1994..... | .353..... | Heather Daters |
| 1993..... | .413..... | Deena Chipp |
| 1992..... | .390..... | Deena Chipp |
| 1991..... | .347..... | Deena Chipp |
| 1990..... | .337..... | Vicki White |
| 1989..... | .349..... | Chris Ehlert |
| 1988..... | .335..... | Chris Ehlert |
| 1987..... | .300..... | Chris Ehlert |
| 1986..... | .263..... | Julie Schroeder |
| 1985..... | .314..... | Paula Evers |
| 1984..... | .321..... | Laurie Magee |
| 1983..... | .357..... | Laurie Magee |
| 1982..... | .319..... | Laurie Magee |
| 1981..... | .259..... | Linda Stone |
| 1980..... | .291..... | Jocelyn Drabelle |
| 1979..... | .279..... | Jocelyn Drabelle |
| 1978..... | .425..... | Sue Coakley |

Runs Batted In

| | | |
|-----------|---------|-------------------|
| 2015..... | 36..... | Kennedy Bailey |
| 2014..... | 32..... | Rikki Alcaraz |
| 2013..... | 27..... | Gina Brown |
| 2012..... | 33..... | Two Tied |
| 2011..... | 39..... | Eranne Daugharthy |
| 2010..... | 34..... | Eranne Daugharthy |
| 2009..... | 59..... | Rachel Gerking |
| 2008..... | 31..... | Two Tied |
| 2007..... | 32..... | Ashley Lepley |
| 2006..... | 27..... | Stephanie Aguerro |
| 2005..... | 29..... | Tracy Davis |
| 2004..... | 26..... | Rachael Rogers |
| 2003..... | 37..... | Angela Higgins |
| 2002..... | 38..... | Lindsay Wood |
| 2001..... | 25..... | Kimbee Plata |
| 2000..... | 43..... | Kylie Sloan |
| 1999..... | 31..... | Kylie Sloan |
| 1998..... | 39..... | Angie Schreurs |
| 1997..... | 44..... | Jody Dean |
| 1996..... | 35..... | Jody Dean |
| 1995..... | 37..... | Kristal Ward |
| 1994..... | 44..... | Two Tied |
| 1993..... | 32..... | Deena Chipp |
| 1992..... | 34..... | Deena Chipp |
| 1991..... | 31..... | Deena Chipp |
| 1990..... | 31..... | Lynell O'Connor |
| 1989..... | 39..... | Chris Ehlert |
| 1988..... | 32..... | Chris Ehlert |
| 1987..... | 25..... | Chris Ehlert |
| 1986..... | 12..... | Two Tied |
| 1985..... | 19..... | Julie Schroeder |
| 1984..... | 17..... | Jane Wagner |
| 1983..... | 28..... | Laurie Magee |
| 1982..... | 36..... | Jane Wagner |
| 1981..... | 26..... | Sherri Salsbury |
| 1980..... | 28..... | Teresa Kennedy |
| 1979..... | 27..... | Sue Coakley |
| 1978..... | 29..... | Teresa Kennedy |

Walks

| | | |
|-----------|---------|-------------------|
| 2015..... | 22..... | Three Tied |
| 2014..... | 23..... | Micalla Rettinger |
| 2013..... | 22..... | Nicole Fisher |
| 2012..... | 28..... | Gina Brown |
| 2011..... | 34..... | Courtney Dunker |
| 2010..... | 31..... | Jen Larsen |
| 2009..... | 23..... | Jen Larsen |
| 2008..... | 22..... | Stephanie Aguerro |
| 2007..... | 22..... | Ashley Lepley |
| 2006..... | 18..... | Jamie Kelling |
| 2005..... | 20..... | Tracy Davis |
| 2004..... | 24..... | Tracy Davis |
| 2003..... | 20..... | Erin Strellner |

| | | |
|-----------|---------|------------------|
| 2002..... | 35..... | Lindsay Wood |
| 2001..... | 21..... | Allison Taverner |
| 2000..... | 30..... | Jeannine Soncini |
| 1999..... | 20..... | Angie Schreurs |
| 1998..... | 21..... | Three Tied |
| 1997..... | 27..... | Jen Dean |
| 1996..... | 22..... | Angie Schreurs |
| 1995..... | 17..... | Jaye Donlea |
| 1994..... | 19..... | Jen Dean |
| 1993..... | 18..... | Jennifer Peters |
| 1992..... | 28..... | Vicki White |
| 1991..... | 29..... | Vicki White |
| 1990..... | 16..... | Lynell O'Connor |
| 1989..... | 21..... | Lynell O'Connor |
| 1988..... | 27..... | Paula Evers |
| 1987..... | 12..... | Connie McBride |
| 1986..... | 14..... | Chris Ehlert |
| 1985..... | 17..... | Sonya Feaker |
| 1984..... | 17..... | Sherri Salsbury |
| 1983..... | 19..... | Marshelle Clark |
| 1982..... | 22..... | Marshelle Clark |
| 1981..... | 20..... | Karla Schiltz |
| 1980..... | 17..... | Karla Schiltz |
| 1979..... | 10..... | Three Tied |
| 1978..... | 12..... | Karla Schiltz |

At-Bats

| | | |
|-----------|----------|-------------------|
| 2015..... | 162..... | Caitlin Wnek |
| 2014..... | 163..... | Caitlin Wnek |
| 2013..... | 162..... | Caitlin Wnek |
| 2012..... | 185..... | Mackenzie Daigh |
| 2011..... | 184..... | Rachel Gerking |
| 2010..... | 181..... | Megan Machovec |
| 2009..... | 198..... | Megan Machovec |
| 2008..... | 153..... | Megan Machovec |
| 2007..... | 148..... | Rachel Gerking |
| 2006..... | 162..... | Jamie Kelling |
| 2005..... | 166..... | Jamie Kelling |
| 2004..... | 154..... | Erin Strellner |
| 2003..... | 154..... | Lindsey Gierman |
| 2002..... | 186..... | Lindsay Wood |
| 2001..... | 186..... | Kristi Johnson |
| 2000..... | 213..... | Lindsay Wood |
| 1999..... | 173..... | Jackie Paulus |
| 1998..... | 164..... | Jackie Paulus |
| 1997..... | 196..... | Amber Sampson |
| 1996..... | 193..... | Jackie Paulus |
| 1995..... | 178..... | Jaye Donlea |
| 1994..... | 198..... | Jaye Donlea |
| 1993..... | 149..... | Kristal Ward |
| 1992..... | 192..... | Jennifer Peters |
| 1991..... | 207..... | Cindy Fangmann |
| 1990..... | 206..... | Cindy Fangmann |
| 1989..... | 186..... | Chris Ehlert |
| 1988..... | 191..... | Chris Ehlert |
| 1987..... | 173..... | Paula Evers |
| 1986..... | 158..... | Paula Evers |
| 1985..... | 172..... | Paula Evers |
| 1984..... | 143..... | Terri Heisterkamp |
| 1983..... | 152..... | Marshelle Clark |
| 1982..... | 181..... | Linda Stone |
| 1981..... | 133..... | Betty Thronson |
| 1980..... | 131..... | Teresa Kennedy |
| 1979..... | 106..... | Sheryl Schlader |
| 1978..... | 91..... | Teresa Kennedy |

Runs

| | | |
|-----------|---------|-----------------|
| 2015..... | 35..... | Caitlin Wnek |
| 2014..... | 32..... | Caitlin Wnek |
| 2013..... | 28..... | Nicole Fisher |
| 2012..... | 47..... | Mackenzie Daigh |
| 2011..... | 37..... | Mackenzie Daigh |
| 2010..... | 39..... | Jen Larsen |
| 2009..... | 42..... | Megan Machovec |
| 2008..... | 32..... | Megan Machovec |
| 2007..... | 32..... | Jen Larsen |
| 2006..... | 26..... | Rachael Rogers |
| 2005..... | 33..... | Jamie Kelling |
| 2004..... | 21..... | Rachael Rogers |
| 2003..... | 29..... | Two Tied |
| 2002..... | 55..... | Lindsay Wood |
| 2001..... | 24..... | Lindsay Wood |
| 2000..... | 43..... | Lindsay Wood |

Yearly Leaders

| | |
|------------------|-------------------|
| 1999.....28..... | Angie Schreurs |
| 1998.....45..... | Jackie Paulus |
| 1997.....48..... | Jen Dean |
| 1996.....36..... | Jackie Paulus |
| 1995.....38..... | Jaye Donlea |
| 1994.....41..... | Heather Daters |
| 1993.....40..... | Heather Daters |
| 1992.....39..... | Deena Chipp |
| 1991.....31..... | Deena Chipp |
| 1990.....27..... | Deena Chipp |
| 1989.....34..... | Two Tied |
| 1988.....35..... | Paula Evers |
| 1987.....23..... | Chris Ehler |
| 1986.....17..... | Two Tied |
| 1985.....42..... | Paula Evers |
| 1984.....16..... | Terri Heisterkamp |
| 1983.....26..... | Marshelle Clark |
| 1982.....35..... | Marshelle Clark |
| 1981.....33..... | Sheryl Schlader |
| 1980.....26..... | Jocelyn Drabelle |
| 1979.....25..... | Sheryl Schlader |
| 1978.....22..... | Sheryl Schlader |

Stolen Bases

| | |
|------------------|--------------------|
| 2015.....12..... | Samantha Olson |
| 2014.....16..... | Samantha Olson |
| 2013.....14..... | Kristin Lock |
| 2012.....12..... | Whitney Plein |
| 2011.....14..... | Whitney Plein |
| 2010.....10..... | Samantha Waters |
| 2009.....13..... | Samantha Waters |
| 2008.....8..... | Megan Machovec |
| 2007.....12..... | Megan Machovec |
| 2006.....11..... | Two Tied |
| 2005.....10..... | Jen Sieleman |
| 2004.....8..... | Lindsey Gierman |
| 2003.....9..... | Stephanie Stratton |
| 2002.....23..... | Lindsay Wood |
| 2001.....24..... | Kristi Johnson |
| 2000.....21..... | Kristi Johnson |
| 1999.....8..... | Jackie Paulus |
| 1998.....10..... | Jackie Paulus |
| 1997.....21..... | Jen Dean |
| 1996.....16..... | Jackie Paulus |
| 1995.....16..... | Jen Dean |
| 1994.....22..... | Two Tied |
| 1993.....6..... | Stacy Weber |
| 1992.....19..... | Jennifer Peters |
| 1991.....9..... | Laura Novotny |
| 1990.....10..... | Deena Chipp |
| 1989.....7..... | Jenny Schultz |
| 1988.....9..... | Paula Evers |
| 1987.....4..... | Jenny Schultz |
| 1986.....6..... | Laura McInroy |
| 1985.....13..... | Laura McInroy |
| 1984.....8..... | Marshelle Clark |
| 1983.....14..... | Tracy Davis |
| 1982.....10..... | Marshelle Clark |
| 1981.....17..... | Betty Davis |
| 1980.....6..... | Sheryl Schlader |
| 1979.....15..... | Sheryl Schlader |
| 1978.....8..... | Sheryl Schlader |

Pitching Leaders

Earned Run Average

| | |
|--------------------|--------------------|
| 2015.....3.56..... | Chelsea Ross |
| 2014.....3.16..... | Jamie Fisher |
| 2013.....1.99..... | Jamie Fisher |
| 2012.....1.33..... | Jamie Fisher |
| 2011.....2.09..... | Jamie Fisher |
| 2010.....3.13..... | Melissa Tillett |
| 2009.....2.12..... | Jen Larsen |
| 2008.....3.34..... | Jen Larsen |
| 2007.....4.28..... | Jen Larsen |
| 2006.....4.56..... | Uju Ibekwe |
| 2005.....2.70..... | Liz Adams |
| 2004.....2.66..... | Julie Phillips |
| 2003.....3.57..... | Julie Phillips |
| 2002.....1.59..... | Malinda McClintock |
| 2001.....2.15..... | Malinda McClintock |
| 2000.....2.33..... | Heidi Fromherz |
| 1999.....1.75..... | Jeannine Sencini |
| 1998.....1.41..... | Shelby Worms |

| | |
|--------------------|------------------|
| 1997.....2.26..... | Jeannine Sencini |
| 1996.....1.63..... | Kandy Keiper |
| 1995.....2.56..... | Shelby Worms |
| 1994.....1.15..... | Desiree Bebout |
| 1993.....1.76..... | Desiree Bebout |
| 1992.....2.16..... | Desiree Bebout |
| 1991.....0.75..... | Heather Daters |
| 1990.....1.82..... | Sarah O'Byrne |
| 1989.....1.21..... | Sarah O'Byrne |
| 1988.....1.22..... | Krista Fosbinder |
| 1987.....0.97..... | Krista Fosbinder |
| 1986.....0.63..... | Krista Fosbinder |
| 1985.....1.26..... | Linda Whannel |
| 1984.....1.53..... | Lori Cook |
| 1983.....1.10..... | Jennifer Berger |
| 1982.....0.35..... | Jennifer Berger |
| 1981.....0.65..... | Kathy Gross |
| 1980.....0.98..... | Kathy Gross |

Innings Pitched

| | |
|---------------------|--------------------|
| 2015.....196.2..... | Chelsea Ross |
| 2014.....186.0..... | Jamie Fisher |
| 2013.....253.1..... | Jamie Fisher |
| 2012.....190.0..... | Jamie Fisher |
| 2011.....187.2..... | Jamie Fisher |
| 2010.....125.1..... | Melissa Tillett |
| 2009.....205.0..... | Jen Larsen |
| 2008.....127.2..... | Jen Larsen |
| 2007.....138.0..... | Ashley Lepley |
| 2006.....169.2..... | Monica Wright |
| 2005.....154.1..... | Amanda Hess |
| 2004.....126.1..... | Malinda McClintock |
| 2003.....181.2..... | Julie Phillips |
| 2002.....249.1..... | Malinda McClintock |
| 2001.....169.2..... | Malinda McClintock |
| 2000.....174.0..... | Heidi Fromherz |
| 1999.....195.2..... | Jeannine Sencini |
| 1998.....143.2..... | Shelby Worms |
| 1997.....125.0..... | Shelby Worms |
| 1996.....193.2..... | Kandy Keiper |
| 1995.....175.2..... | Kandy Keiper |
| 1994.....151.0..... | Dana Happel |
| 1993.....151.0..... | Desiree Bebout |
| 1992.....223.2..... | Desiree Bebout |
| 1991.....192.0..... | Connie Fangmann |
| 1990.....277.2..... | Sarah O'Byrne |
| 1989.....203.0..... | Krista Fosbinder |
| 1988.....223.0..... | Krista Fosbinder |
| 1987.....174.0..... | Krista Fosbinder |
| 1986.....166.0..... | Krista Fosbinder |
| 1985.....171.2..... | Linda Whannel |
| 1984.....150.2..... | Lori Cook |
| 1983.....159.0..... | Jennifer Berger |
| 1982.....159.2..... | Jennifer Berger |
| 1981.....122.2..... | Lesa Trenary |
| 1980.....100.1..... | Kathy Gross |
| 1979.....89.1..... | Lori Stielow |
| 1978.....80.2..... | Linda Edwards |

Appearances

| | |
|------------------|--------------------|
| 2015.....34..... | Chelsea Ross |
| 2014.....36..... | Jamie Fisher |
| 2013.....38..... | Jamie Fisher |
| 2012.....32..... | Jamie Fisher |
| 2011.....34..... | Jamie Fisher |
| 2010.....29..... | Jaye Hutcheson |
| 2009.....34..... | Jen Larsen |
| 2008.....26..... | Jen Larsen |
| 2007.....39..... | Jen Larsen |
| 2006.....30..... | Monica Wright |
| 2005.....27..... | Amanda Hess |
| 2004.....25..... | Malinda McClintock |
| 2003.....34..... | Julie Phillips |
| 2002.....42..... | Julie Phillips |
| 2001.....34..... | Malinda McClintock |
| 2000.....33..... | Heidi Fromherz |
| 1999.....31..... | Jeannine Sencini |
| 1998.....24..... | Shelby Worms |
| 1997.....23..... | Two Tied |
| 1996.....31..... | Kandy Keiper |
| 1995.....32..... | Kandy Keiper |
| 1994.....27..... | Kandy Keiper |
| 1993.....27..... | Desiree Bebout |
| 1992.....43..... | Desiree Bebout |

| | |
|------------------|------------------|
| 1991.....34..... | Connie Fangmann |
| 1990.....47..... | Sarah O'Byrne |
| 1989.....33..... | Krista Fosbinder |
| 1988.....32..... | Krista Fosbinder |
| 1987.....32..... | Krista Fosbinder |
| 1986.....25..... | Krista Fosbinder |
| 1985.....26..... | Linda Whannel |
| 1984.....20..... | Lori Cook |
| 1983.....23..... | Jennifer Berger |
| 1982.....26..... | Jennifer Berger |
| 1981.....20..... | Lesa Trenary |
| 1980.....17..... | Two Tied |
| 1979.....14..... | Lori Stielow |
| 1978.....15..... | Trish Kinley |

Wins

| | |
|------------------|--------------------|
| 2015.....18..... | Chelsea Ross |
| 2014.....17..... | Jamie Fisher |
| 2013.....22..... | Jamie Fisher |
| 2012.....20..... | Jamie Fisher |
| 2011.....20..... | Jamie Fisher |
| 2010.....14..... | Jen Larsen |
| 2009.....18..... | Jen Larsen |
| 2008.....9..... | Ashley Lepley |
| 2007.....9..... | Ashley Lepley |
| 2006.....7..... | Monica Wright |
| 2005.....12..... | Amanda Hess |
| 2004.....8..... | Malinda McClintock |
| 2003.....13..... | Julie Phillips |
| 2002.....19..... | Julie Phillips |
| 2001.....13..... | Malinda McClintock |
| 2000.....13..... | Jeannine Sencini |
| 1999.....19..... | Jeannine Sencini |
| 1998.....14..... | Shelby Worms |
| 1997.....9..... | Jeannine Sencini |
| 1996.....19..... | Kandy Keiper |
| 1995.....12..... | Kandy Keiper |
| 1994.....16..... | Dana Happel |
| 1993.....14..... | Desiree Bebout |
| 1992.....19..... | Desiree Bebout |
| 1991.....11..... | Two Tied |
| 1990.....21..... | Sarah O'Byrne |
| 1989.....17..... | Sarah O'Byrne |
| 1988.....18..... | Krista Fosbinder |
| 1987.....14..... | Krista Fosbinder |
| 1986.....11..... | Krista Fosbinder |
| 1985.....12..... | Linda Whannel |
| 1984.....10..... | Lori Cook |
| 1983.....15..... | Jennifer Berger |
| 1982.....17..... | Jennifer Berger |
| 1981.....10..... | Two Tied |
| 1980.....10..... | Lori Stielow |
| 1979.....8..... | Two Tied |
| 1978.....8..... | Linda Edwards |

Strikeouts

| | |
|-------------------|--------------------|
| 2015.....193..... | Chelsea Ross |
| 2014.....136..... | Jamie Fisher |
| 2013.....213..... | Jamie Fisher |
| 2012.....207..... | Jamie Fisher |
| 2011.....211..... | Jamie Fisher |
| 2010.....72..... | Melissa Tillett |
| 2009.....70..... | Jen Larsen |
| 2008.....70..... | Ashley Lepley |
| 2007.....83..... | Ashley Lepley |
| 2006.....91..... | Monica Wright |
| 2005.....113..... | Amanda Hess |
| 2004.....87..... | Malinda McClintock |
| 2003.....74..... | Julie Gerdes |
| 2002.....103..... | Malinda McClintock |
| 2001.....146..... | Malinda McClintock |
| 2000.....86..... | Heidi Fromherz |
| 1999.....133..... | Jeannine Sencini |
| 1998.....97..... | Shelby Worms |
| 1997.....85..... | Shelby Worms |
| 1996.....108..... | Shelby Worms |
| 1995.....84..... | Kandy Keiper |
| 1994.....67..... | Dana Happel |
| 1993.....63..... | Desiree Bebout |
| 1992.....84..... | Desiree Bebout |
| 1991.....52..... | Desiree Bebout |
| 1990.....118..... | Sarah O'Byrne |
| 1989.....100..... | Krista Fosbinder |
| 1988.....113..... | Krista Fosbinder |

| | |
|-------------------|------------------|
| 1987.....80..... | Krista Fosbinder |
| 1986.....114..... | Krista Fosbinder |
| 1985.....64..... | Linda Whannel |
| 1984.....72..... | Jennifer Berger |
| 1983.....125..... | Jennifer Berger |
| 1982.....216..... | Jennifer Berger |
| 1981.....46..... | Kathy Gross |
| 1980.....52..... | Kathy Gross |
| 1979.....50..... | Kathy Gross |
| 1978.....30..... | Linda Edwards |

Walks Allowed

| | |
|-------------------|--------------------|
| 2015.....74..... | Chelsea Ross |
| 2014.....57..... | Jamie Fisher |
| 2013.....97..... | Jamie Fisher |
| 2012.....72..... | Jamie Fisher |
| 2011.....56..... | Jamie Fisher |
| 2010.....57..... | Melissa Tillett |
| 2009.....70..... | Jen Larsen |
| 2008.....46..... | Jen Larsen |
| 2007.....54..... | Jen Larsen |
| 2006.....107..... | Uju Ibekwe |
| 2005.....78..... | Amanda Hess |
| 2004.....48..... | Julie Gerdes |
| 2003.....55..... | Julie Phillips |
| 2002.....98..... | Julie Phillips |
| 2001.....41..... | Malinda McClintock |
| 2000.....31..... | Heidi Fromherz |
| 1999.....27..... | Jeannine Sencini |
| 1998.....36..... | Jeannine Sencini |
| 1997.....44..... | Shelby Worms |
| 1996.....87..... | Shelby Worms |
| 1995.....62..... | Shelby Worms |
| 1994.....29..... | Kandy Keiper |
| 1993.....23..... | Desiree Bebout |
| 1992.....38..... | Dana Happel |
| 1991.....66..... | Desiree Bebout |
| 1990.....55..... | Mindy Sindlinger |
| 1989.....47..... | Sarah O'Byrne |
| 1988.....66..... | Krista Fosbinder |
| 1987.....44..... | Two Tied |
| 1986.....28..... | Two Tied |
| 1985.....34..... | Linda Whannel |
| 1984.....20..... | Jennifer Berger |
| 1983.....35..... | Jennifer Berger |
| 1982.....40..... | Jennifer Berger |
| 1981.....38..... | Kathy Gross |
| 1980.....20..... | Kathy Gross |
| 1979.....13..... | Kathy Gross |
| 1978.....25..... | Trish Kinley |

Individual Honors

All-Conference Selections

All-Gateway Conference

| | | | |
|-----------|-----------------------|----|------------|
| 1983..... | Laura Norenberg..... | OF | |
| 1985..... | Paula Evers..... | 1B | |
| 1987..... | Chris Ehler..... | 3B | |
| 1988..... | Susan Mahoney..... | 1B | |
| | Chris Ehler..... | 3B | |
| | Paula Evers..... | SS | |
| 1989..... | Krista Fosbinder..... | P | (1st Team) |
| | Chris Ehler..... | 3B | (1st Team) |
| 1990..... | Sarah O'Byrne..... | P | (1st Team) |
| | Jenny Schultz..... | OF | (At-Large) |
| 1991..... | Deena Chipp..... | OF | (At-Large) |
| 1992..... | Deena Chipp..... | OF | (1st Team) |

All-Missouri Valley Conference

| | | | |
|-----------|-----------------------|----|---------------|
| 1993..... | Deena Chipp..... | OF | (1st Team) |
| | Laura Novotny..... | 2B | (2nd Team) |
| | Karen Vandevoort..... | C | (2nd Team) |
| 1994..... | Heather Daters..... | OF | (1st Team) |
| | Karen Vandevoort..... | C | (1st Team) |
| | Stacy Weber..... | SS | (1st Team) |
| 1995..... | Jaye Donlea..... | UT | (1st Team) |
| 1996..... | Kandy Keiper..... | P | (2nd Team) |
| | Stacy Weber..... | SS | (2nd Team) |
| 1997..... | Jackie Paulus..... | 2B | (1st Team) |
| | Jen Dean..... | 3B | (1st Team) |
| | Jody Dean..... | OF | (1st Team) |
| | Amber Sampson..... | OF | (2nd Team) |
| 1998..... | Jackie Paulus..... | 2B | (1st Team) |
| | Jody Dean..... | OF | (1st Team) |
| | Shelby Worms..... | P | (2nd Team) |
| | Angie Schreurs..... | 1B | (2nd Team) |
| 1999..... | Kylie Sloan..... | SS | (1st Team) |
| | Jackie Paulus..... | 2B | (1st Team AL) |
| | Lindsay Wood..... | OF | (1st Team AL) |
| 2001..... | Lindsay Wood..... | 3B | (1st Team) |
| | Kylie Sloan..... | SS | (1st Team) |
| | Jeannine Soncini..... | P | (2nd Team) |
| 2001..... | Lindsay Wood..... | 3B | (1st Team AL) |
| | Kristi Johnson..... | 2B | (2nd Team) |
| | Kimbee Plata..... | SS | (2nd Team) |

Academic Honors

MVC Scholar-Athlete Honorees

| | | |
|-----------|------------------------|---------------------|
| 1993..... | Karen Vandevoort..... | (1st Team) |
| 1994..... | Karen Vandevoort..... | (1st Team) |
| | Dana Happel..... | (1st Team) |
| 1996..... | Kari McLaughlin..... | (1st Team) |
| 1998..... | Jackie Paulus..... | (1st Team) |
| | Kylie Sloan..... | (1st Team) |
| 1999..... | Jackie Paulus..... | (1st Team) |
| | Kylie Sloan..... | (1st Team) |
| 2000..... | Kylie Sloan..... | (1st Team) |
| | Jeannine Soncini..... | (1st Team) |
| 2001..... | Kristi Johnson..... | (Honorable Mention) |
| 2002..... | Stacey Sampson..... | (1st Team) |
| 2003..... | Erin Strellner..... | (Honorable Mention) |
| 2004..... | Erin Strellner..... | (Honorable Mention) |
| 2005..... | Erin Strellner..... | (1st Team) |
| 2007..... | Jen Larsen..... | (1st Team) |
| 2008..... | Steph Agüero..... | (1st Team) |
| | Jen Larsen..... | (1st Team) |
| 2009..... | Jen Larsen..... | (1st Team) |
| 2010..... | Jen Larsen..... | (1st Team) |
| | Eranne Daugharthy..... | (1st Team) |
| 2011..... | Eranne Daugharthy..... | (1st Team) |
| 2012..... | Jamie Fisher..... | (1st Team) |
| | Whitney Plein..... | (Honorable Mention) |
| 2013..... | Jamie Fisher..... | (1st Team) |
| 2014..... | Jamie Fisher..... | (1st Team) |
| | Caitlin Wnek..... | (Honorable Mention) |

| | | | |
|-----------|------------------------|---------|---------------|
| | Stacey Sampson..... | OF | (2nd Team) |
| 2002..... | Lindsay Wood..... | 3B | (1st Team) |
| | Stacey Sampson..... | 1B | (1st Team AL) |
| | Angela Higgins..... | C | (2nd Team) |
| 2003..... | Angela Higgins..... | C | (1st Team) |
| | Erin Strellner..... | 3B | (2nd Team) |
| 2004..... | Rachael Rogers..... | SS | (2nd Team) |
| 2005..... | Erin Strellner..... | 3B | (2nd Team) |
| | Tracy Davis..... | P | (2nd Team) |
| | Rachael Rogers..... | SS | (2nd Team) |
| 2008..... | Jen Larsen..... | DP/P | (1st Team) |
| 2009..... | Rachel Gerking..... | OF | (1st Team) |
| | Megan Machovec..... | OF | (1st Team) |
| | Brittney Balduf..... | 3B | (2nd Team) |
| | Mackenzie Daigh..... | SS | (2nd Team) |
| | Jen Larsen..... | DP/P | (2nd Team) |
| | Kelly Papes..... | C | (2nd Team) |
| 2010..... | Megan Machovec..... | OF | (1st Team) |
| | Jen Larsen..... | DP/P | (1st Team) |
| | Mackenzie Daigh..... | SS | (2nd Team) |
| | Eranne Daugharthy..... | DP/UTIL | (2nd Team) |
| 2011..... | Jamie Fisher..... | P | (1st Team) |
| | Mackenzie Daigh..... | SS | (1st Team) |
| | Eranne Daugharthy..... | 1B | (2nd Team) |
| | Rachel Gerking..... | OF | (2nd Team) |
| 2012..... | Jamie Fisher..... | P | (1st Team) |
| | Mackenzie Daigh..... | SS | (1st Team) |
| | Whitney Plein..... | 3B | (1st Team) |
| | Samantha Reimer..... | C | (2nd Team) |
| 2013..... | Jamie Fisher..... | P | (1st Team) |
| | Gina Brown..... | 1B | (2nd Team) |
| | Nicole Fisher..... | DP | (2nd Team) |
| | Haley Kriener..... | 3B | (2nd Team) |
| 2014..... | Rikki Alcaraz..... | 3B | (1st Team) |
| | Jamie Fisher..... | P | (2nd Team) |
| | Chelsea Ross..... | P/UTIL | (2nd Team) |
| | Caitlin Wnek..... | SS | (2nd Team) |
| 2015..... | Chelsea Ross..... | P/UTIL | (1st Team) |
| | Rikki Alcaraz..... | 3B | (2nd Team) |
| | Caitlin Wnek..... | SS | (2nd Team) |

Note: Only First Team Honors Awarded 1983-1988

Postseason Awards

MVC All-Tournament Selections

| | | |
|-----------|-----------------------|---------|
| 1993..... | Jennifer Peters..... | P |
| 1994..... | Karen Vandevoort..... | C |
| 1996..... | Kandy Keiper..... | P |
| 1997..... | Deanne Fick..... | P |
| 1998..... | Shelby Worms..... | P |
| | Jody Dean..... | OF |
| | Jackie Paulus..... | 2B |
| 1999..... | Jeannine Soncini..... | P |
| | Jackie Paulus..... | 2B |
| | Angie Schreurs..... | P |
| 2001..... | Lindsay Wood..... | 3B |
| | Stacey Sampson..... | OF |
| 2002..... | Lindsay Wood..... | 3B |
| | Julie Phillips..... | P |
| 2011..... | Hannah Borschel..... | OF |
| 2012..... | Mackenzie Daigh..... | SS |
| | Whitney Plein..... | 3B |
| 2013..... | Jamie Fisher..... | P (MVP) |
| | Gina Brown..... | 1B |
| | Nicole Fisher..... | DP |
| | Kristin Lock..... | OF |
| 2014..... | Chelsea Ross..... | P |

All-Americans



Lindsay Wood



Jody Dean

Jody Dean - NFCA Third Team (1997)
Lindsay Wood - NFCA First Team (2002)
Jamie Fisher - Easton Second Team (2012)



Jamie Fisher



Meredith Bakley

Conference Honors

MVC Most Valuable Player

» Lindsay Wood (2002)

MVC Pitcher of the Year

» Jamie Fisher (2012)

MVC Newcomer of The Year

» Caitlin Wnek (2013)

MVC Rookie of The Year

» Lindsay Wood (1999)

» Mackenzie Daigh (2009)

» Jamie Fisher (2011)

MVC Coach of The Year

» Meredith Bakley (2000)

» UNI Staff (2009, 2012)

Academic All-America

First Team

» Karen Vandevoort (1992)

Third Team

» Kylie Sloan (2000)

Yearly Leaders

| | | | | | | | |
|-------------------------|-----------|-------------------------|-------------|--------------------------|-----------|--------------------------|-----------|
| Abney, Livi..... | 2010-11 | Engle, Amy..... | 1997 | Magee, Laurie..... | 1981-84 | Schafer, Melissa..... | 1988-89 |
| Ackerman, Peggy..... | 1985-86 | Evers, Paula..... | 1985-88 | Magnuson, Jessica..... | 2008-09 | Scheetz, Beth..... | 1998-01 |
| Adams, Liz..... | 2005-2008 | Fangmann, Connie..... | 1990-93 | Maoney, Susan..... | 1987-88 | Schlader, Sheryl..... | 1978-81 |
| Aguero, Stephanie..... | 2005-2008 | Feaker, Sonya..... | 1984-85, 87 | Martin, Kathy..... | 1978-79 | Schneider, Pam..... | 1976-79 |
| Alcaraz, Rikki..... | 2014-15 | Ferden, Nikki..... | 2005-07 | Martin, Michaela..... | 2014-15 | Schrage, Diane..... | 1988 |
| Anderson, Gloria..... | 1979-80 | Fick, Deanne..... | 1994-97 | Matter, Holly..... | 1992 | Schreurs, Angie..... | 1996-99 |
| Angstman, Kris..... | 1986 | Finn, Marcia..... | 1975 | McBride, Connie..... | 1985-88 | Schroder, Julie..... | 1985-86 |
| Aten, Olivia..... | 2011-12 | Fisher, Jamie..... | 2011-14 | McBall, Tangela..... | 1992 | Schultz, Jenny..... | 1987-90 |
| Augustus, Jerri..... | 1982-83 | Fisher, Nicole..... | 2013-14 | McBartney, Kris..... | 1975-78 | Seidel, Penny..... | 1983-84 |
| Bailey, Kennedy..... | 2015 | Flaws, Mackenzie..... | 2013 | McCauley, Melinda..... | 1982 | Sellers, Maggie..... | 1995-98 |
| Bakey, Sarah..... | 2007-10 | Foresman, Vicki..... | 1989 | McClintock, Malinda..... | 2000-04 | Severin, Pamela..... | 1982-85 |
| Balduf, Brittny..... | 2008-09 | Forsbinder, Krista..... | 1986-89 | McCormick, Gena..... | 1984-85 | Severinsen, Jessica..... | 2011-12 |
| Barkley, Jessica..... | 2007-08 | Forsyth, Mara..... | 2015 | McCoy, Kelli..... | 1999-00 | Shalla, Stefaney..... | 2006-2008 |
| Bauer, Shari..... | 1992-94 | Franzen, Cindy..... | 1989-91 | McDonald, Katelyn..... | 2012 | Shenk, Mickey..... | 1996-97 |
| Beauchamp, Shelly..... | 1985-87 | Freitag, Heidi..... | 1998-01 | McElmell, Jenny..... | 1990-91 | Shogren, Kathy..... | 1975-76 |
| Bebout, Desiree..... | 1991-94 | Fromherz, Heidi..... | 1997-00 | McInroy, Laura..... | 1985-86 | Sielemann, Jennifer..... | 2003-05 |
| Beitzel, Anne..... | 1980 | Froning, Dixie..... | 1988 | McLaughlin, Kari..... | 1995-96 | Sindlinger, Mindy..... | 1990-91 |
| Belz, Samantha..... | 2015 | Fulton, Vanessa..... | 1977 | Mercurio, Tami..... | 1989 | Sloan, Beth..... | 1982-83 |
| Benedict, Alex..... | 2013 | Galvin, Allison..... | 2009-12 | Metcalfe, Kim..... | 1976 | Sloan, Kylie..... | 1997-00 |
| Benson, Janeen..... | 1976-77 | Garner, Karey..... | 1996 | Miller, Tanya..... | 2002-03 | Soncini, Jeannine..... | 1997-00 |
| Benson, Terri..... | 1983-86 | Garrett, Tabitha..... | 1996 | Moeller, Jo..... | 1975-76 | Sovereign, Paula..... | 1987 |
| Berger, Jennifer..... | 1982-84 | Gerdes, Julie..... | 2003-04 | Murken, Robyn..... | 1981-82 | Spicer, Leanne..... | 1984-85 |
| Bernhardt, Jan..... | 1975-77 | Gerking, Rachel..... | 2007-11 | Navntoft, Melissa..... | 1997-00 | Staveley, Stephanie..... | 1998-00 |
| Bernhardt, Joyce..... | 1976-77 | Gierman, Lindsey..... | 2002-04 | Neuman, Rhonda..... | 1975 | Steil, Angie..... | 2009 |
| Berning, Mindy..... | 1992 | Graver, Cara..... | 2001 | Nicholson, Samantha..... | 2015 | Steinkamp, Jami..... | 1995-96 |
| Blair, Heather..... | 1997-99 | Green, Christy..... | 1995 | Nielsen, Jill..... | 1979 | Stieger, Kari..... | 1988 |
| Bland, Aubrey..... | 2015 | Gross, Kathy..... | 1979-82 | Norenberg, Laura..... | 1982-84 | Stielow, Lori..... | 1979-80 |
| Borschel, Hannah..... | 2009-12 | Gurgich, Layne..... | 2012 | Novotny, Laura..... | 1990-93 | Stockman, Pat..... | 1975-77 |
| Brandes, Cindy..... | 1980 | Happel, Dana..... | 1992-94 | Olson, Julie..... | 1976-78 | Stone, Linda..... | 1981-83 |
| Braun, Diane..... | 1975-76 | Harrison, Holly..... | 1987-91 | Olson, Samanatha..... | 2013-15 | Stout, Jodi..... | 1991 |
| Brooks, Candice..... | 1999 | Hathaway, Lori..... | 1985 | Owen, Lindsey..... | 2001 | Strellner, Erin..... | 2002-05 |
| Brown, Gina..... | 2011-14 | Hayes, Shawn..... | 1989-90 | O'Byrne, Sarah..... | 1987-90 | Tarter, Heather..... | 2007-2008 |
| Brown, Pat..... | 1975-76 | Heflin, Kalli..... | 2009 | O'Conner, Lynell..... | 1987-90 | Taverner, Allison..... | 2000-01 |
| Brunssen, Jordyn..... | 2013-14 | Heisterkamp, Terri..... | 1984-85 | Papash, Kelly..... | 2006-09 | Thielen, Erin..... | 2000 |
| Buress, Connie..... | 1977-79 | Hendrickson, Amy..... | 1991-94 | Parker, Doris..... | 1976-77 | Thomas, Michelle..... | 1976-77 |
| Brunner, Kim..... | 1988 | Hess, Amanda..... | 2005 | Patterson, Stacey..... | 1998 | Thronson, Betty..... | 1979-82 |
| Buchanan, Alyssa..... | 2014-15 | Higgins, Angela..... | 2002-03 | Paulson, Morgan..... | 2006-09 | Tillett, Melissa..... | 2008-11 |
| Burns, Dana..... | 2004 | Holthaus, Lisa..... | 1986-87 | Paulus, Jackie..... | 1996-99 | Trenary, Lesa..... | 1980-81 |
| Buss, Emily..... | 2002 | Huebner, Susan..... | 1975-76 | Perry, Carrie..... | 1988 | Troyna, Donna..... | 1975-76 |
| Callanan, Lindsay..... | 2009-10 | Huffy, Marcia..... | 1979 | Peters, Jennifer..... | 1990-93 | Turner, Laura..... | 2009-12 |
| Carlson, McKena..... | 2010-13 | Hunter, Julia..... | 2012-15 | Peterson, Dyann..... | 2006 | Tyler, Sue..... | 1978-81 |
| Carlson, Shannon..... | 1997 | Hutcheson, Jaye..... | 2009-12 | Peterson, Jill..... | 1979 | Vancil, Katherine..... | 1995 |
| Carroll, Natalie..... | 2006 | Ibekwe, Uju..... | 2003-06 | Peterson, Marla..... | 1983-85 | Vande Voort, Karen..... | 1991-94 |
| Carruthers, Cathy..... | 1981 | Jennings, Heather..... | 1992-94 | Pfohl, Shellie..... | 1982-84 | VanVleet, Abbie..... | 2013 |
| Chase, Leslie..... | 1996 | Johnson, Kristi..... | 2000-01 | Phillips, Julie..... | 2001-04 | Variano, Anna..... | 2014-15 |
| Chipp, Deena..... | 1990-93 | Johnson, Sharon..... | 1975-77 | Phillips, Michelle..... | 2008 | Victoria, Bailey..... | 2015 |
| Clark, Marshelle..... | 1981-84 | Juhl, Jackie..... | 1991 | Phipps, Pam..... | 1983-86 | Vignaroli, Angela..... | 1992-95 |
| Coakley, Sue..... | 1976-79 | Keegan, Kelly..... | 1994-95 | Pollow, Abby..... | 2013 | Wachholder, Kim..... | 2009-10 |
| Cook, Lori..... | 1981-84 | Keiper, Crystal..... | 2008-09 | Plata, Kimbee..... | 2001 | Wagner, Jane..... | 1981-84 |
| Corkrean, Jenny..... | 1978-79 | Keiper, Kandy..... | 1993-96 | Plein, Whitney..... | 2009-12 | Wahlostrom, Barb..... | 1975-77 |
| Curran, Jamie..... | 1998 | Kelling, Jamie..... | 2005-06 | Plese, Emma..... | 2012 | Walls, Melissa..... | 2012-13 |
| Cuva, Sarah..... | 2000 | Kelsey, Laura..... | 2004 | Rankin, Carol..... | 1977 | Ward, Kristal..... | 1992-95 |
| Daigh, Mackenzie..... | 2009-12 | Kennedy, Teresa..... | 1977-80 | Rawson, Bonnie..... | 1975-76 | Waters, Samantha..... | 2009-10 |
| Daleske, Judy..... | 1980-81 | King, Melissa..... | 2002-05 | Rebling, Sara..... | 2001-02 | Watt, Jackie..... | 1997 |
| Dalrymple, Kristen..... | 1995-98 | Kinley, Trish..... | 1978-80 | Reed, Krystan..... | 2004-05 | Weber, Stacy..... | 1993-96 |
| Daters, Heather..... | 1991-94 | Kinnetz, Kate..... | 2014-15 | Reimer, Samantha..... | 2010-13 | Whannel, Linda..... | 1985-86 |
| Daugharthy, Eranne..... | 2009-11 | Koerperich, Hailey..... | 2014-15 | Reiter, Pam..... | 1985-87 | White, Vicki..... | 1989-92 |
| Davis, Betty..... | 1981-83 | Koerperich, Hope..... | 2015 | Rettinger, Micalla..... | 2013-15 | Winter, Jackie..... | 1981-82 |
| Davis, Tracy..... | 2002-05 | Kragel, Wendi..... | 2001 | Rhoads, Dena..... | 1994-95 | Wnek, Caitlin..... | 2013-15 |
| Dean, Jen..... | 1994-97 | Kriener, Haley..... | 2010-13 | Robins, Jeanelle..... | 1977 | Wolfe, Macey..... | 2015 |
| Dean, Jody..... | 1996-99 | Kriener, Mary..... | 1975-78 | Rogers, Rachael..... | 2003-06 | Wood, Lindsay..... | 1999-02 |
| Decoster, Mary..... | 1987-90 | Kumamoto, Mandy..... | 2004-07 | Ross, Chelsea..... | 2014-15 | Woodard, Pam..... | 1981 |
| Donlea, Jaye..... | 1994-95 | Kurtz, Maria..... | 1994 | Ruzicka, Brittany..... | 2006-2008 | Worms, Shelby..... | 1995-98 |
| Doughty, Ellie..... | 2013 | Lafleur, Jacque..... | 1999-00 | Sabey, Teri..... | 1999 | Wright, Lindsey..... | 1999-02 |
| Dowd, Amanda..... | 2000 | Lang, Kami..... | 1992 | Sackett, Nancy..... | 1986-87 | Wright, Monica..... | 2006 |
| Drabelle, Jocelyn..... | 1978-80 | Larsen, Jen..... | 2007-10 | Sadlack, Rachel..... | 2013-15 | Young, Blair..... | 2000-03 |
| Dunker, Courtney..... | 2009-12 | Larson, Melissa..... | 2001-04 | Saladino, Sarah..... | 2010 | Zbornik, Jennifer..... | 1992-94 |
| Dykstra, Nancy..... | 1989 | Lepley, Ashley..... | 2007-2008 | Salsbury, Sherri..... | 1981-84 | Zembruski, Aly..... | 2012-13 |
| Eason, Patrisha..... | 1982-84 | Link, Whitney..... | 2007 | Sampson, Amber..... | 1995-98 | Zintak, Leanne..... | 1999 |
| Edwards, Linda..... | 1978-79 | Lock, Kristin..... | 2013-15 | Sampson, Stacey..... | 1999-02 | | |
| Ehlert, Chris..... | 1986-89 | Lyons, Janie..... | 1984 | Sandoval, Claudia..... | 2002 | | |
| Embrey, Leah..... | 2009-12 | Machovec, Megan..... | 2007-10 | Santi, Kathy..... | 1975-78 | | |