

1997

Panther Softball '97

University of Northern Iowa

Let us know how access to this document benefits you

Copyright ©1997 Athletics, University of Northern Iowa

Follow this and additional works at: <https://scholarworks.uni.edu/amg>



Part of the [Higher Education Commons](#)

Recommended Citation

University of Northern Iowa, "Panther Softball '97" (1997). *Athletics Media Guides*. 227.

<https://scholarworks.uni.edu/amg/227>

This Book is brought to you for free and open access by the Athletics at UNI ScholarWorks. It has been accepted for inclusion in Athletics Media Guides by an authorized administrator of UNI ScholarWorks. For more information, please contact scholarworks@uni.edu.

Offensive Materials Statement: Materials located in UNI ScholarWorks come from a broad range of sources and time periods. Some of these materials may contain offensive stereotypes, ideas, visuals, or language.



Panther Softball '97

NORTHERN IOWA

2 STEAL



PANTHERS



University
of
Northern
Iowa





Northern Iowa Softball

Contents

Contents/Athletic Phone Directory/Credits

First Class Facilities

This is Northern Iowa

Meet the Athletic Administration

Meet the Panther Support Staff

Meet the Coaches

1997 Season Outlook

1997 Rosters

Meet the Panthers...

Deanne Fick

Kristen Dalrymple

Jen Dean

Shannon Carlson/Amber Sampson

Maggie Sellers/Mickey Shenk

Shelby Worms/Heather Blair

Jody Dean/Amy Engle

Jackie Paulus/Angie Schreurs/Heidi Fromherz

Melissa Navntoft/Kylie Sloan/Jeannine Soncini/Jackie Watt

1996 Game Summary

1996 Statistics

Northern Iowa School Records

1996 Final MVC Standings/Honors

The Missouri Valley Conference

1996 MVC Statistics

Conference Only

All Games

Northern Iowa Yearly Results

1974-1981

1981-1987

1987-1992

1992-1996

Northern Iowa All-Time Series Records

1997 Northern Iowa Schedule

1997 Northern Iowa Opponents

Northern Iowa Media Information

Team Picture/Quick Schedule

Inside Front Cover

Page 1

Page 2

Page 3

Page 4

Page 5

Page 6

Page 7

Page 8

Page 9

Page 10

Page 11

Page 12

Page 13

Page 14

Page 15

Page 16

Page 17

Page 18

Page 19

Page 20

Page 21

Page 22

Page 23

Page 24

Page 25

Page 26

Page 27

Page 28

Page 29

Page 30-32

Inside Back Cover

Back Cover



Athletic Directory

(Area code for all numbers is 319.)

Christopher Ritrievi, Athletic Director

Office Phone: 273-2470

Nancy Justis, Media Relations Director

Office Phone: 273-6354

Office FAX: 273-3602

Kevin Kane, Asst. Media Relations Director

Office Phone: 273-3642

David Moll, Media Relations Intern

Office Phone: 273-3642

Chad Guge, Student Assistant/Softball Contact

Office Phone: 273-6354

Home Phone: 273-3229

Meredith Bakley, Head Softball Coach

Office Phone: 273-2520

Home Phone: 236-3664

Dr. Gene Bruhn, Assistant Coach

Home Phone: 278-4980

Media Relations and Softball Address

UNI-Dome NW Upper

University of Northern Iowa

Cedar Falls, IA 50614

General Information

Location: Cedar Falls, IA 50614

Founded: 1876

Enrollment: 13,000

Nickname: Panthers

Colors: Purple and Old Gold

Conference: Missouri Valley

Affiliation: NCAA Division I

1996 Record: 34-22 (11-9 MVC)

Starters Returning/Lost: 9/3

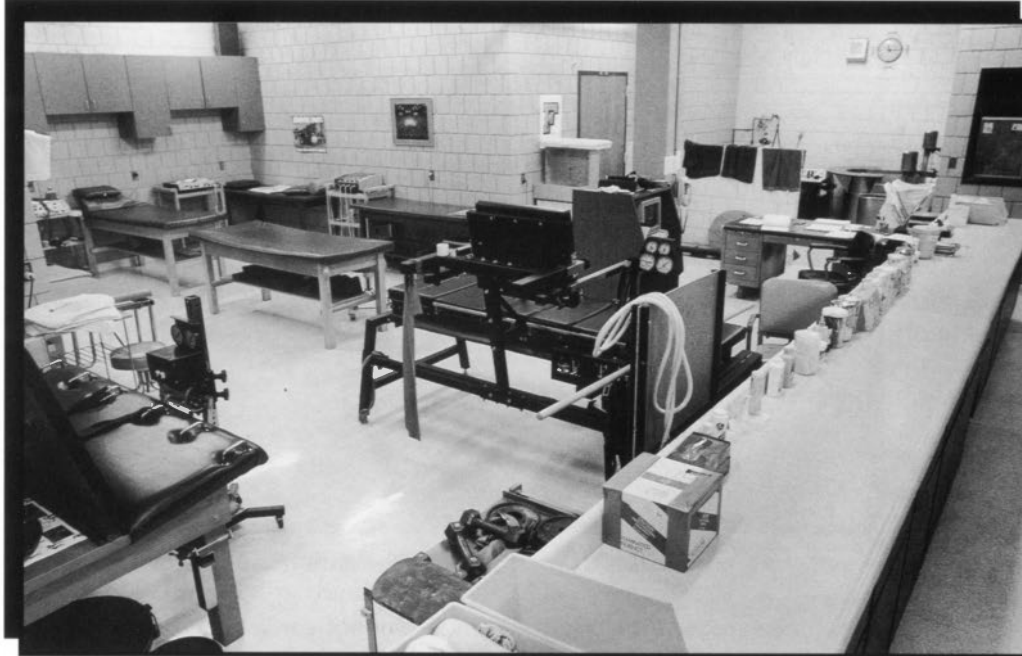
Letterwinners Returning/Lost: 10/3

Credits

The 1997 softball media guide was designed and written by Chad Guge, Media Relations office student assistant/softball contact. Editorial assistance provided by Nancy Justis, Media Relations Director. Pictures provided by UNI Public Relations Department.

First Class Facilities

The Northern Iowa softball team found its home on the UNI campus in the 1978 season with the construction of its own diamond after previously playing all home games at a softball complex in nearby Waterloo.



Ground-level dug-outs have been added since that time to afford protection for the athletes from the possibility of inclement weather. These were remodeled in 1995 to provide a better playing atmosphere.

However, if the weather dictates that games can no longer be played outdoors, the Panthers have the advantage of being able to play indoors in the UNI-Dome, a

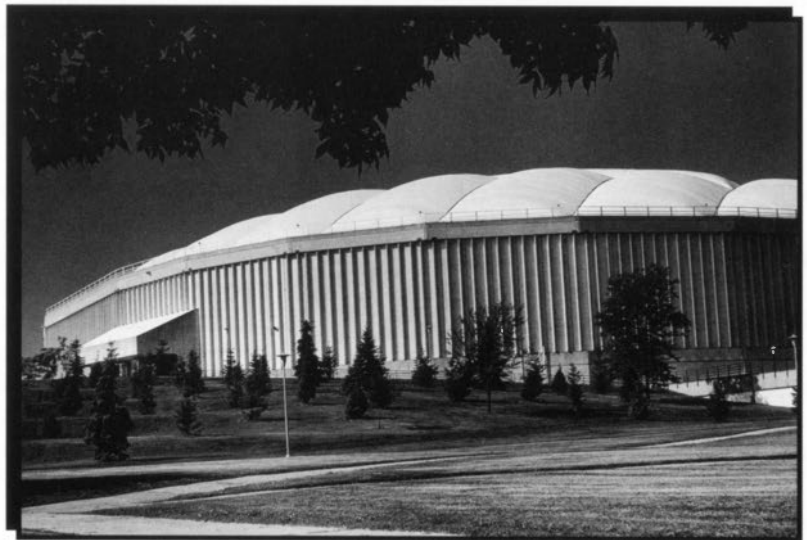
unique, multi-purpose athletic facility built in 1976, that has gained a reputation as one of the finest collegiate facilities in America.

The Dome combines the features of a fieldhouse, football stadium, and large auditorium. In addition to Panther football, basketball, softball, wrestling, and track events, it has played host to the NCAA Division I-AA football playoffs, gymnastics and wrestling championships, high school football and basketball, the Iowa high school football playoffs, and is the site of the 1997 NCAA National Wrestling Championships.

The turf was replaced three years ago with a new Astroturf manufactured by Balsam Corporation, the same material that lasted 16 years prior to the installation of the new. It's a premier surface utilized by every Dome facility in North America with the exception of one, and offers the best durability and playability of any material on the market.

Approximately 16,400 spectators can be seated for football games and track meets, and although normal capacity is 10,000 for basketball, seating can be expanded to over 20,000.

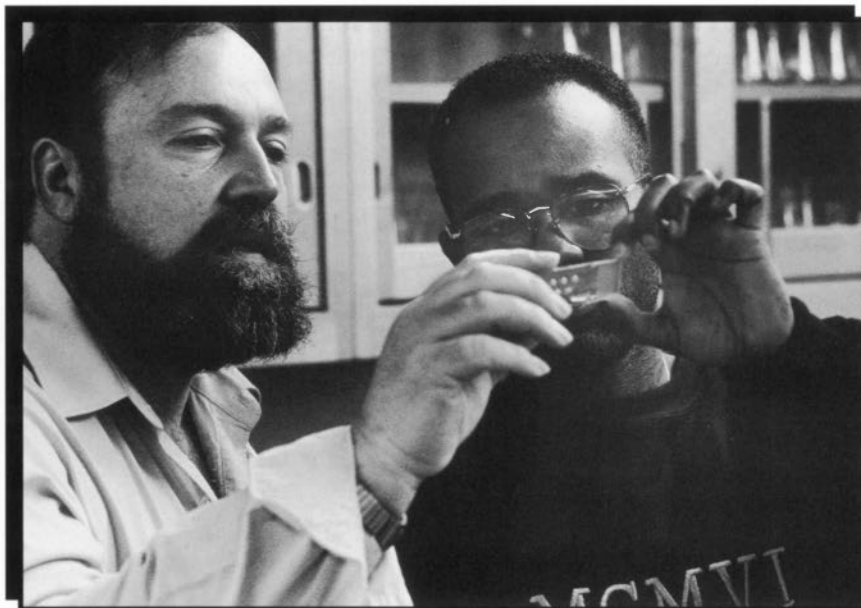
UNI softball has hosted nine tournaments in the Dome, placing two fields opposite each other on the turf. The tourney field has included nationally ranked teams, including Nebraska, as well as Missouri Valley Conference member Drake and strong teams such as Augustana of South Dakota, Mankato State, and the 1995 champion team, Wisconsin-Parkside.





This is Northern Iowa

The University of Northern Iowa emphasizes outstanding undergraduate education, with complementary graduate programs at the master's, specialist's and doctoral levels. Building on its historic strength in teacher education, the University has developed a number of outstanding programs in its various Colleges. UNI also participates in the bachelor of liberal studies program offered by the Regents Universities, and its Division of Continuing Education and Special Programs sponsors classes off-campus in centers throughout the state. Enrollment on its 860-acre campus stands at over 13,000 students from every county in Iowa, 40 states and 48 foreign countries.



UNI's heritage and philosophy place great value on providing a student-centered educational experience. The University nurtures a premiere learning environment -- it is small enough to offer its students individualized attention, yet large enough to provide a variety of resources and opportunities as well as distinguished faculty. The University prides itself on being a great teaching university, and most courses are taught by full-time faculty members (663) who are committed to helping students grow intellectually and personally.



UNI was founded in 1876 as the Iowa State Normal School. In 1909, it became Iowa State Teachers College. In 1961, the name was changed to State College of Iowa, and in 1967, the Iowa Legislature acted to change the status of the institution to that of a university under its present title.

While maintaining its primary emphasis on teacher education, the University has continued its metamorphosis toward a multi-purpose institution, with nationally acclaimed programs in many disciplines.

UNI's accounting program continues to be ranked among the best in the nation. UNI student groups ranging from chemistry to conservation to public relations have been recognized by their respective national groups for the excellence of their programs.

UNI's outreach also extends to the Iowa business community through programs of the External Services Division of

the College of Business Administration, including the Institute for Decision Making, Small Business Development Center, Small Business Institute, Management & Professional Development Center, Market Development Program and Industrial Site Location Program. The Iowa Waste Reduction Center provides free, non-regulatory consulting services on waste management to the state's small and medium-sized companies. The Iowa Plastics Technology Center and the Center for Applied Research in Metal Casting are among UNI's newest service programs designed to diversify, expand and strengthen Iowa's economy.

UNI offers a wide variety of cultural programs, lectures and conferences. The Continuing Education division, often in conjunction with the University's Office of Conference and Visitor Services, also cooperates with business and industry in programs of study and development on the campus.

Meet the Athletic Administration



President Dr. Robert Koob

Robert Koob, a Northern Iowa alumnus, begins his second year as its eighth president. A 1962 graduate of what was then State College of Iowa, Koob was named president July 1, 1995 by the Iowa State Board of Regents.

Koob had been a senior vice president and vice president for academic affairs at California Polytechnic State University at San Luis Obispo, CA, since 1990.

Prior to his position at Cal Poly, the 54-year old Koob was vice president of academic affairs at North Dakota State from 1985-90 and served a one-year term as interim president from 1987-88.

At Cal Poly, Koob was director and chair of the Cal Poly Foundation and served on a number of CSU system committees, including the CSU Commission on Telecommunications Infrastructures.

He began his teaching career at North Dakota State in 1967 as an assistant professor of chemistry, advancing to professor of chemistry in 1972. He served that institution in several capacities before assuming the vice presidency. He was chair of the chemistry department for six years, and acting chair of the physics department one year, as well as dean of the College of Science and Mathematics from 1981-84.

Koob graduated from State College of Iowa with a bachelor's degree in chemistry and earned his doctorate in chemistry from Kansas in 1967. He and his wife, Yvonne, have seven grown children.

"It's an honor for me, as a UNI graduate, to return as president," he said. "I can't imagine anyone being more honored in the State of Iowa."



Athletic Director Christopher Ritrievi

Chris Ritrievi is in his fifth year as Northern Iowa Director of Athletics. Since the day he joined the department, he has worked to develop a competitive Division I athletic program.

A former Division I athlete himself, Ritrievi earned three varsity letters at Princeton, where he received a bachelor's degree in Economics in 1979. He earned his master's in Business Administration from Lehigh in 1983.

His career in intercollegiate athletics began as a graduate assistant at Lehigh. He has served in administrative and coaching positions at the Eastern College Athletic Conference, Bowling Green State, Princeton, Pennsylvania and

Stanford prior to coming to UNI.

During his tenure at UNI, he has reorganized the management of the department to make it more effective and has set priorities to increase the competitiveness of Panther teams. Emphasizing increased operating budgets for all sports and increased scholarships for women's sports, the department has enjoyed its best performances since joining Division I in 1980. Since 1992, the Panthers have celebrated their first Missouri Valley Conference championships in men's cross country, indoor and outdoor track and field and volleyball. Football has won five Gateway Conference titles and has enjoyed the highest attendance, including six-of-seven UNI-Dome football sellouts. In 1995-96, six sports enjoyed their highest conference finishes since joining the MVC in 1991.

The department successfully has hosted NCAA football playoff games and volleyball matches. This year the UNI-Dome is hosting the NCAA Division I Wrestling Championships.

Increased emphasis on athletics performance has not diminished the positive public image the program enjoys. The department operates on a balanced budget and student-athletes graduate at rates equal to or better than the student body as a whole.

Ritrievi served as vice president of the MVC athletic directors in 1994-95 and chairs the league's long-range planning and Gateway finance committees. He has also been named president of the Division I-AA Football Athletic Directors Association for the 1996-97 year.

A native of Levittown, PA, he is married to the former Stephanie Homeyer who grew up in Wellsburg, IA.



Meet the Panther Support Staff

Nancy Justis, Athletic Media Relations Director



Justis is a member of the College Sports Information Directors of America (CoSIDA) and served as chair of that organization's Career Enhancement Committee for several years. She joined the UNI staff in 1974 as assistant editor in the Office of Public Relations after working one year as a reporter for the Fort Collins (CO) Coloradoan. In 1976, she was named the first fulltime assistant SID at UNI and was named director in 1979. Her publications have received several awards from CoSIDA.

She was a member of the press operations corp at the 1984 Summer Olympics in Los Angeles and the 1987 Pan American Games in Indianapolis. She assisted with the 1993 NCAA Midwest Regional Basketball Championship held in St. Louis. She also is a member of Women in Communications, Inc., and the

United States Basketball Writers Association. She's a 1973 graduate of the University of Iowa. A native of Cedar Rapids, IA, she and her husband Bob, who announces home Panther football and men's basketball games, have a daughter, Nicole.

Kevin Kane, Assistant Media Relations Director



Kane, a 1984 UNI graduate, was named assistant SID in 1988 after pursuing his graduate degree from Western Illinois. He assumed the additional duties of head women's golf coach two years ago. Prior to taking the UNI position, he spent almost five years in radio as a reporter and on-air personality before pursuing his graduate degree.

He also is a member of the College Sports Information Directors of America and has received publication awards from that organization. A native of Bernard, IA, he's married to the former Laurie Upah. The couple have two daughters-- Kelsey, 6, and Allison, 2.



Chad Guge
Softball Contact



Sandra Williamson
Assoc. AD



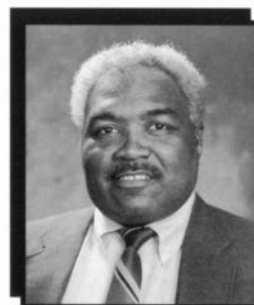
Jersey Jermier
Assoc. AD



Jim Egli
Asst. AD--Facilities



Julie Bright
Business Manager



Bob Kincaid
Academic Advising

Meet the Coaches

Head Coach Meredith Bakley



Meredith Bakley is in her 18th year heading the Northern Iowa softball program. During her tenure, she has an AIAW National Championship to her credit, leading the Panthers to the title in 1982, and a berth in the NCAA Division I Championships in 1990 after her team won the Gateway Conference Tournament.

She recorded a 22-10 record her first year at UNI enroute to a second-place finish in the AIAW State Tournament, the same year the team finished sixth at the regional championship. In all, her UNI teams have posted above .500 records in 13 of 18 seasons.

Bakley has compiled a 517-411-3 record since her arrival in Cedar Falls in 1979 and has guided her teams to 29 or more wins ten times. Her philosophy of playing against the best competition available has seen the Panthers face a steady diet of the nation's top-ranked teams.

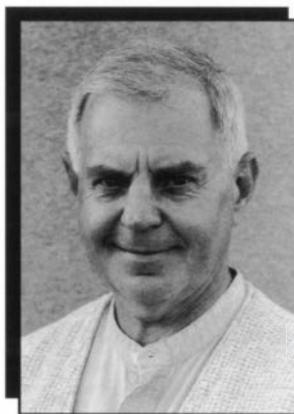
A graduate of Black Hills State College in Spearfish, South Dakota, Bakley received her master's degree from Colorado State University in 1974. She has completed hours toward her doctorate from the University of Iowa and Northern Colorado.

Bakley was an instructor at Valley State College in Valley City, North Dakota, where she was head basketball and softball coach before coming to UNI. Her Valley City softball squad placed second in the state in 1978. Bakley's career collegiate coaching record is 576-447-3.

Bakley's Composite UNI Record

Year	Record	Year	Record
1979	22-10	1989	34-26
1980	31-15	1990	29-30
1981	28-15	1991	24-40
1982	35-15-1	1992	29-24-1
1983	31-15	1993	25-19
1984	23-22-1	1994	40-21
1985	24-30	1995	24-32
1986	20-29	1996	34-22
1987	29-23	Overall	517-411-3
1988	35-25		

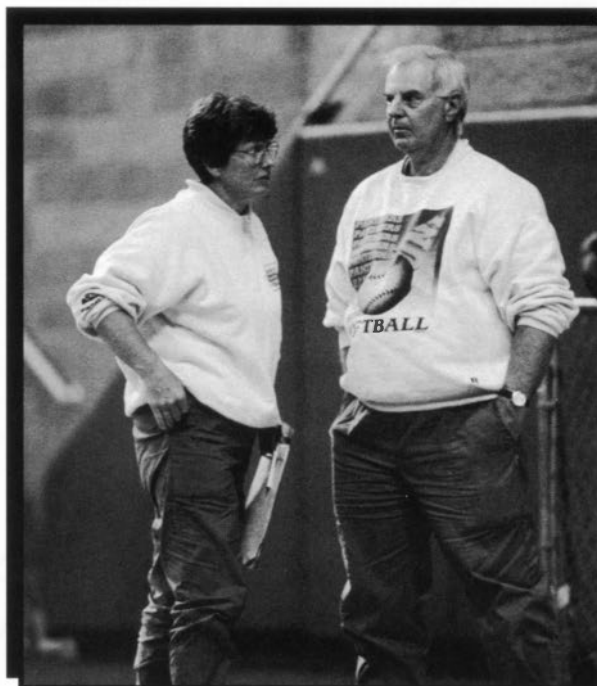
Assistant Coach Dr. Gene Bruhn



Dr. Gene Bruhn is in his 15th season as the only assistant coach the Panthers have ever had. Dr. Bruhn has handled Northern Iowa pitching staffs that have been consistently among the best in the Missouri Valley since his arrival. Included on those staffs have been all-conference

hurdlers Krista Fosbinder, Sarah O'Byrne and Kandy Keiper.

Bruhn currently is a practicing chiropractor in Clarksville, Iowa. He studied at Ellsworth Junior College two years, at Wartburg for a year, and received his degree from Palmer College of Chiropractic in Davenport, Iowa. Dr. Bruhn was a top softball player in the area for over 25 years.



With last year's 34-22 finish, Bakley (left) broke the 500 UNI career-victory mark with a 2-0 win over Evansville in the Saluki Invitational.



1997 Season Outlook

"License to Steal" is an appropriate motto for the Northern Iowa Panthers as they try to break the school record for stolen bases in a season for the third consecutive year. Junior Jen Dean also is looking to improve on her streak of 43 consecutive regular-season stolen bases without being thrown out. The Panthers have the speed to do it, but the key question is if they have the experience and leadership to win the Missouri Valley Conference title.

"We've lost three key seniors from last year's team. Kandy Keiper was a great pitcher for us. She was able to go out and carry her games and scatter the opponents' hits. We've also lost shortstop Stacy Weber. She was not only an exceptional player, but a great team leader. Also gone from the team is Kari McLaughlin, who came in and played third base after Jen (Dean) went out for the year and won us ball games for us with her defense," commented head coach Meredith Bakley, in her 18th year at Northern Iowa.

The Panthers come off a 34-22 season which saw them go 1-2 in the Missouri Valley Conference Tournament. This year, the MVC Tournament is being held in Cedar Falls. Bakley isn't just satisfied with making it to the tourney again this year.

"Our goal this year is to win the Missouri Valley Conference title, and that's it. We aren't happy with just making it there. With the tourney being held in Cedar Falls, it's just that much more of an incentive."

Despite losing three key players, the Panthers do return a veteran outfield, led by tri-captain Deanne Fick. The only senior on the team, she is expected to start in left field after her best year yet at UNI. Also starting in the outfield are junior right fielder Amber Sampson and sophomore center fielder Jody Dean. Both had great seasons, with Dean leading the team in homeruns with five and Sampson was fourth on the team with nine doubles and 10 stolen bases. Also competing for spots is sophomore Heather Blair.



After leading the Panthers in several offensive categories, sophomore Jackie Paulus will return to second base.



Junior Amber Sampson should be a key part of UNI's returning outfield for the 1997 season.

The infield is a mix of seasoned veterans and young talent. On the left side is junior tri-captain Jen Dean, who is eager to return after sitting out most of last season due to a wrist injury. Filling in beside her at shortstop is newcomer Kylie Sloan. Bakley had high praise for her young recruit.

"Kylie did really well, and is sound fundamentally. She got to work this fall with Jen on communication, so it should work out really well this season," Bakley said.

The right side of the infield is solidified with the return of sophomores Jackie Paulus and Angie Schreurs at second and third base, respectfully. Both had excellent first years, with each leading the team in most of the offensive categories. Behind Paulus is freshman walk on Jackie Watt, and backing up Schreurs is Shannon Carlson.

Catching should not be a problem, as all three catchers return for UNI. Junior tri-captain Kristen Dalrymple and junior Mickey Shenk will share time starting, with junior Maggie Sellers backing them up.

Pitching could be the factor which makes or breaks the Panther season, as only one starter returns from 1996. Bakley has recruited three new pitchers to help fill the gap left by Keiper. Returning to lead this staff is junior Shelby Worms. She will be looked on to lead the young crew after coming off a 15-8 season with a team-leading 108 strikeouts. The second spot in the rotation is still up in the air, but three fine recruits in freshmen Heidi Fromherz, Jeannine Soncini and Melissa Navntoft are looking to grab it. Also vying for a spot is sophomore walk on Amy Engle.

"All three pitchers have seen good playing time this fall. Heidi had probably the best fall season of the three. She was a pleasant discovery. Jeannine has a lot of playing time and experience. She is a hard worker and has a lot of skill. Melissa was used mainly as a closer for us this fall, and as a left-hander, should provide a different look for the opponents," Bakley said.

Can the Panthers combine the youth and experience to win the MVC? Bakley believes they can and will. "This should be a very exciting year. I look forward to working with this group of women."

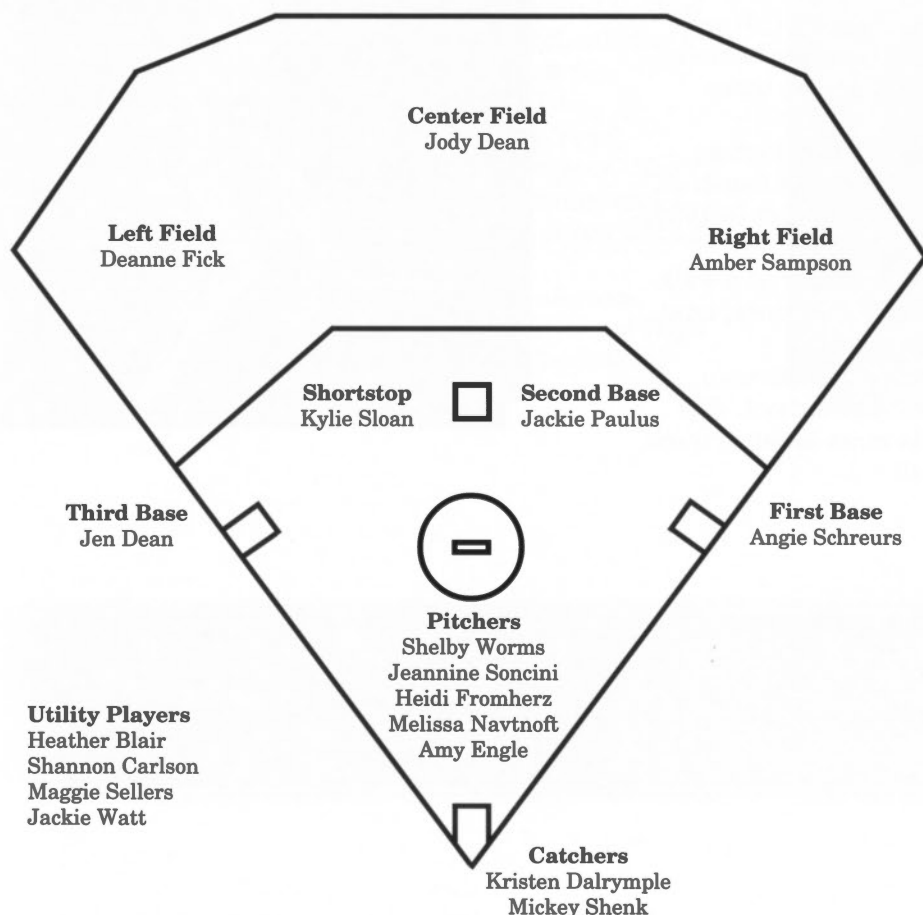


1997 Panther Rosters

Alphabetical Roster

No.	Name	Year	Pos.	B/T	Hometown/High School
17	Heather Blair	So.	IF	L/R	Des Moines, IA/Valley/UNLV
3	Shannon Carlson	Jr.	1B	R/R	Des Moines, IA/East/Iowa Central
15	Kristen Dalrymple	Jr.	C	R/R	St. Louis, MO/Kirkwood
9	Jen Dean	Jr.	3B	R/R	Postville, IA/Postville
7	Jody Dean	So.	OF	R/R	Postville, IA/Postville
19	Amy Engle	So.	P	R/R	Newton, IA/Newton
10	Deanne Fick	Sr.	OF	R/R	Oskaloosa, IA/Oskaloosa
18	Heidi Fromherz	Fr.	P	R/R	Milwaukie, OR/Central
11	Melissa Navntoft	Fr.	P/IF	L/L	Burlington, IA/Burlington
1	Jackie Paulus	So.	2B	R/R	Burlington, IA/Burlington
13	Amber Sampson	Jr.	OF	R/R	Urbandale, IA/Urbandale
12	Angie Schreurs	So.	1B	L/L	West Des Moines, IA/Valley
6	Maggie Sellers	Jr.	C	R/R	Chariton, IA/Chariton
5	Mickey Shenk	Jr.	C	R/R	Carlisle, IA/Carlisle/Southeastern
2	Kylie Sloan	Fr.	SS	R/R	Carlisle, IA/Carlisle
16	Jeannine Soncini	Fr.	P	R/R	Flossmoor, IL/Homewood-Flossmoor
4	Jackie Watt	Fr.	IF	R/R	East Dubuque, IL/Wahlert
14	Shelby Worms	Jr.	P	R/R	Mascoutah, IL/Mascoutah

Depth Chart Roster



Numerical Roster

No.	Name
1	Jackie Paulus
2	Kylie Sloan
3	Shannon Carlson
4	Jackie Watt
5	Mickey Shenk
6	Maggie Sellers
7	Jody Dean
9	Jen Dean
10	Deanne Fick
11	Melissa Navntoft
12	Angie Schreurs
13	Amber Sampson
14	Shelby Worms
15	Kristen Dalrymple
16	Jeannine Soncini
17	Heather Blair
18	Heidi Fromherz
19	Amy Engle



Northern Iowa Softball

Meet the Panthers



**Senior Tri-Captain
Deanne Fick/OF
Oskaloosa, Iowa
Public Relations
Letters Earned at UNI: 3
Daughter of Keith and Bev Fick
Birthdate: August 31, 1974**

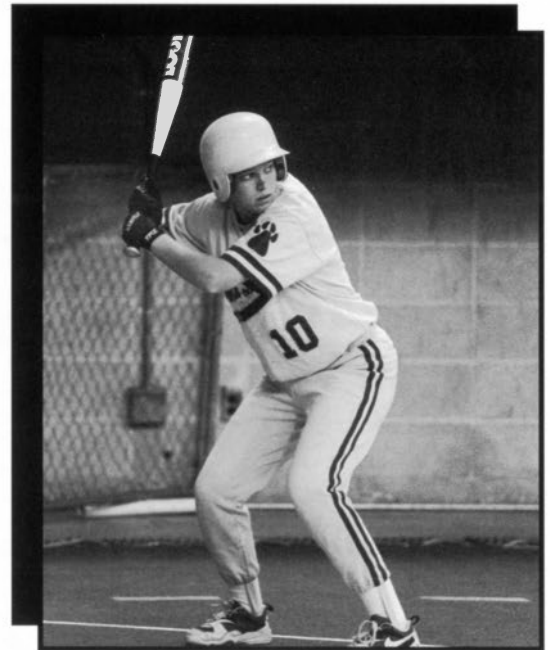
1997 Outlook...Deanne was picked to be a tri-captain with Jen Dean and Kristen Dalrymple after her best year yet for Northern Iowa. She is expected to start in left field where she has played steadily for the past two years. Deanne should provide leadership and experience to this very young Panther team.

1996...Finished with a .311 batting average, raising her career batting average by 33 points. She also matched her career marks in doubles (10) and runs batted in (27). She hit her first career homerun and triple last year, while committing only three errors in 57 chances.

1995...Played in 50 games her sophomore year, batting .227 with 29 hits. She placed fourth on the team with 11 stolen bases in 14 attempts in 1995, and tallied 15 runs scored.

1994...Batted .218 in her first year as a walk-on with the Panthers. She played in 59 games, totaling 13 runs batted in and six doubles.

High School...A four-year all-conference selection in softball at Oskaloosa High School. She earned 17 letters participating in cross country, track, volleyball, basketball and softball.



<u>Yr.</u>	<u>BA</u>	<u>G</u>	<u>AB</u>	<u>R</u>	<u>H</u>	<u>RBI</u>	<u>2B</u>	<u>3B</u>	<u>HR</u>	<u>SB/A</u>	<u>SO</u>	<u>BB</u>
1994	.218	59	174	17	32	13	6	0	0	4/5	36	8
1995	.227	50	128	15	29	6	0	0	0	11/14	20	7
1996	.311	52	132	22	41	27	10	3	1	10/11	23	12
Tot.	.235	161	434	54	102	46	16	3	1	25/30	79	27



**Junior Tri-Captain
Kristen Dalrymple/C
St. Louis, Missouri
Undecided
Letters Earned at UNI: 2
Daughter of Jim and Charlene Dalrymple
Birthdate: October 7, 1976**

1997 Outlook...Kristen is looking to improve on last year's performance. The starting catcher for Northern Iowa, she should do well defensively with her past experience behind the plate. As a tri-captain, she can help develop the youth on the pitching staff this season.

1996...Batting .222 in '96, Kristen still managed to hit two homeruns and total 24 runs batted in. She also was third on the team in walks with 14. Her fielding picked up where her batting left off, tallying a .993 fielding percentage while throwing out five would-be stealers and handing out 26 assists.

1995...Earned team "Rookie of the Year" honors after having an excellent freshman year. She finished with a team-high .320 batting average and totaled 11 doubles and 21 RBIs. She also threw out 13 baserunners in 61 attempts.

High School...A first team all-conference selection her junior and senior years at Kirkwood High School. She won eight letters in softball, basketball and track.



<u>Yr.</u>	<u>BA</u>	<u>G</u>	<u>AB</u>	<u>R</u>	<u>H</u>	<u>RBI</u>	<u>2B</u>	<u>3B</u>	<u>HR</u>	<u>SB/A</u>	<u>SO</u>	<u>BB</u>
1995	.320	56	153	4	49	21	11	1	1	1/1	25	9
1996	.222	56	158	9	35	24	7	1	2	0/0	36	14
Tot.	.270	112	311	13	84	45	18	2	3	1/1	61	23



Junior Tri-Captain
Jen Dean/3B
Postville, Iowa
Political Science
Letters Earned at UNI: 2
Daughter of Glen and Judy Dean
Birthdate: January 20, 1975

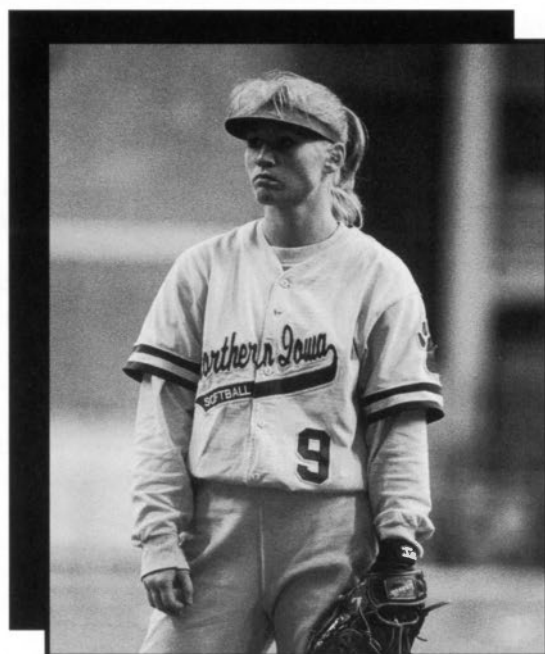
1997 Outlook...Jen will return to third base this year after sitting out most of the 1996 season due to a wrist injury. She had an outstanding fall season, and has worked on her fielding and throwing during the off-season. Jen should provide excellent leadership for the Panthers as a tri-captain, and will provide a reliable glove at the "hot corner."

1996...Despite only playing nine games last season, Jen broke the UNI school record with an .815 slugging percentage. She hit four homeruns and batted .370 during her shortened year.

1995...Only playing 42 games in '95 due to a hand injury at the Western Illinois Invitational, she still batted a respectable .270 with five doubles, five triples and three homeruns. On the year, Jen also tallied 16 stolen bases on 16 attempts.

1994...Solidified her starting position at third base with an outstanding freshman year in which she broke four Northern Iowa records, including most runs batted in (44) and most homeruns (8) in a season. She also racked up 22 stolen bases and batted .273 during the '94 season.

High School...A first team all-conference four years and first team all-district three years at Postville High School. She earned 16 letters in high school in basketball, track, volleyball and softball.



<u>Yr.</u>	<u>BA</u>	<u>G</u>	<u>AB</u>	<u>R</u>	<u>H</u>	<u>RBI</u>	<u>2B</u>	<u>3B</u>	<u>HR</u>	<u>SB/A</u>	<u>SO</u>	<u>BB</u>
1994	.273	61	165	36	45	44	6	0	8	22/22	45	19
1995	.270	42	126	20	34	29	5	5	3	16/16	17	6
1996	.370	9	27	11	10	10	0	0	4	5/5	5	3
Tot.	.279	112	318	67	89	83	11	5	15	43/43	67	28

Northern Iowa Softball



Junior Shannon Carlson/1B
Des Moines, Iowa
Undecided
Daughter of Bill and Dixie Carlson
Birthdate: October 17, 1974

1997 outlook...Shannon will back up Angie Schreurs at first base and is a possible selection at designated player.

1996 (Iowa Central)...Batted .256 and had 11 hits and four runs batted in despite playing in only 23 games due to an eye injury at Iowa Central College. That same year, she participated in the NCAA Division III National Tournament.

1995 (Iowa Central)...Was a second team all-Iowa Conference selection at designated player finishing with a .284 average and two homeruns.

High School...Was a first team all-state selection at first base for Des Moines East High School.



Junior Amber Sampson/OF
Urbandale, Iowa
Elementary Education
Letters Earned at UNI: 2
Daughter of Tim and Marilyn Sampson
Birthdate: May 6, 1976

1997 Outlook...Amber is one of three starters from last year's squad to return to the outfield for UNI. Expected to start in right field, Amber has worked on her batting during the off-season.

1996...Had a fine year for the Panthers, batting a respectable .288 with 17 runs batted in, nine doubles and three triples. The last two stats were career highs for Amber. She also stole 10 bases without being thrown out.

1995...Played 55 games with a .312 batting average. She was second on the team with 15 stolen bases in 18 attempts.

High School...A first team all-state and all-conference selection her senior year at Urbandale and a second team all-conference pick her junior year. She earned 10 letters in softball, track and basketball.

<u>Yr.</u>	<u>BA</u>	<u>G</u>	<u>AB</u>	<u>R</u>	<u>H</u>	<u>RBI</u>	<u>2B</u>	<u>3B</u>	<u>HR</u>	<u>SB/A</u>	<u>SO</u>	<u>BB</u>
1995	.312	55	154	22	48	10	0	0	0	15/18	29	11
1996	.288	56	153	28	44	17	9	3	0	10/10	26	10
Tot.	.299	111	307	50	92	27	9	3	0	25/28	55	21



Junior Maggie Sellers/C
Chariton, Iowa
Biology
Letters Earned at UNI: 2
Daughter of Bruce and Terry Sellers
Birthdate: June 25, 1976

1997 Outlook...Maggie will be looked upon to be a back-up catcher for Kristen Dalrymple and Mickey Shenk. During the off-season, she has worked on her power at the plate and improving her speed. Maggie will see much of her playing time as a pinch runner for UNI.

1996...Saw limited action in the '96 season, mainly as a pinch runner. She scored nine runs on the year and came to the plate five times in 17 games.

1995...Maggie played in 22 games for Northern Iowa in her first season, totaling three runs.

High School...Selected first team all-conference and second team all-district in 1994 and second team all-conference her sophomore year at Chariton High School. She won 13 letters in softball, track, volleyball and basketball.

<u>Yr.</u>	<u>BA</u>	<u>G</u>	<u>AB</u>	<u>R</u>	<u>H</u>	<u>RBI</u>	<u>2B</u>	<u>3B</u>	<u>HR</u>	<u>SB/A</u>	<u>SO</u>	<u>BB</u>
1995	.000	22	6	3	0	0	0	0	0	0/0	2	1
1996	.000	17	5	9	0	0	0	0	0	0/1	3	0
Tot.	.000	39	11	12	0	0	0	0	0	0/1	5	1



Junior Mickey Shenk/C
Carlisle, Iowa
Social Studies
Letters Earned at UNI: 1
Daughter of Jim and Patty Shenk
Birthdate: February 17, 1976

1997 Outlook...Mickey will split time with Kristen Dalrymple at catcher after a good fall season. Defensively sound, she has worked on her hitting during the off season.

1996...Had a decent '96 season despite a .221 batting average. She did have eight doubles and 28 runs batted in during the year. Mickey also broke the school record with a 1.000 fielding percentage (131 chances without an error).

1995 (Southeastern College)...Mickey transferred from Southeastern after her '95 season. She was nominated for the second team JC All-American Region II team.

High School...Earned selections to the second team all-conference team for three years and all-district first team for two while at Carlisle High School. She received 14 letters for softball, volleyball, basketball and track.

<u>Yr.</u>	<u>BA</u>	<u>G</u>	<u>AB</u>	<u>R</u>	<u>H</u>	<u>RBI</u>	<u>2B</u>	<u>3B</u>	<u>HR</u>	<u>SB/A</u>	<u>SO</u>	<u>BB</u>
1996	.221	51	136	12	30	28	8	1	1	2/2	11	6



Junior Shelby Worms/P
Mascoutah, Illinois
Elementary Education
Letters Earned at UNI: 2
Daughter of Gene and Gail Worms
Birthdate: August 1, 1976

1997 Outlook...Shelby will start the '97 season as the Panthers' number one pitcher, and as the only returning pitcher on the UNI roster. She had a great fall season, and should be one of the top pitchers in the Missouri Valley.

1996...Shelby finished the '96 campaign with a 15-8 record and a 2.88 earned run average. She led the team with 108 strikeouts in 167.2 innings of work. She started 26 games and finished 20 of them, as well as picking up the team's only save on the year.

1995...In her first season for UNI, she finished with a 6-14 record and a 2.56 ERA. She was second on the pitching staff in many categories, including innings pitched (131) and strikeouts (61).

High School...A first team all-conference selection her sophomore, junior and senior years while also earning honors as regional Player of the Year her senior year. She was invited to play in the Super 60 Classic that same year. She earned eight letters in softball and volleyball at Mascoutah High School.

<u>Yr.</u>	<u>ERA</u>	<u>W-L</u>	<u>G</u>	<u>GS</u>	<u>CG</u>	<u>Sho</u>	<u>IP</u>	<u>H</u>	<u>R</u>	<u>ER</u>	<u>BB</u>	<u>SO</u>	<u>WP</u>
1995	2.56	4-16	28	22	6	2	131.0	147	78	48	62	61	9
1996	2.88	15-8	28	26	20	4	167.2	160	89	69	87	108	14
Tot.	2.74	19-24	56	48	26	6	298.2	307	166	117	149	169	23



Sophomore Heather Blair/Util.
West Des Moines, Iowa
Undecided
Daughter of Del and Connie Blair
Birthdate: February 17, 1977

1997 Outlook...Heather saw limited action this fall season, mainly as a pinch runner or designated player. Her speed and defensive skills will be an asset to the Northern Iowa roster as a utility player.

High School...A first team all-conference selection for three years and an honorable mention selection for one at Valley High School. She also was a third team all-state choice her senior year. Heather won 13 letters in volleyball, basketball, track and softball.



Sophomore Jody Dean/OF
Postville, Iowa
Business/Accounting
Letters Earned at UNI: 1
Daughter of Glen and Judy Dean
Birthdate: May 30, 1977

1997 Outlook...Jody, the younger sister of third baseman Jen Dean, is expected to start in centerfield, replacing Kari McLaughlin. She did play most of last year, gaining valuable experience. Jody improved her defensive skills during the fall, and that combined with her speed on the bases and her explosive bat should make her a valuable member of the team.

1996...Jody was a key player last season, putting up impressive numbers for a freshman. She batted .310 with team-leading marks in runs batted in (35) and homeruns (5). She also was second on the team with 34 runs scored and 14 stolen bases.

High School...Jen was a four-year first team all-conference selection and a two-time all-state choice at Postville High School. She earned 15 letters in softball, basketball, volleyball and track.

<u>Yr.</u>	<u>BA</u>	<u>G</u>	<u>AB</u>	<u>R</u>	<u>H</u>	<u>RBI</u>	<u>2B</u>	<u>3B</u>	<u>HR</u>	<u>SB/A</u>	<u>SO</u>	<u>BB</u>
1996	.310	56	158	35	49	35	6	2	5	14/18	18	8



Sophomore Amy Engle/P
Newton, IA
Leisure Services
Daughter of Gail and Karyl Engle
Birthdate: August 1, 1976

1997 Outlook...Amy did not play this fall season due to an injury. She is expected to see playing time this spring as a relief pitcher on a very young UNI pitching staff.

High School...At Newton High School, was a second team all-conference pick her junior year and a honorable mention selection her senior year. She earned 15 letters in volleyball, basketball, track and softball.

Northern Iowa Softball



Sophomore Jackie Paulus/ 2B
Burlington, Iowa
Business
Letters Earned at UNI: 1
Daughter of Robert and Lily Paulus
Birthdate: February 27, 1977

1997 Outlook...Jackie returns to second base after a spectacular freshman year. A solid glove and quickness makes her one of the best defensive players in the Panther line-up. Jackie teams up with Jen Dean and Angie Schreurs to give experience in the UNI infield.

1996...Led the '96 squad in most of the offensive statistics. She tallied 193 at bats, 36 runs scored, 54 hits, four triples and 16 stolen bases -- all of which were team highs. Jackie also was second on the team with 140 putouts and third with 112 assists.

High School...A first team all-conference and a Class 3A all-state selection for Burlington High School. She was asked to participate in the Iowa Coaches Association All-Star Game, but could not play due to injury. She won letters in varsity basketball, softball and volleyball.

<u>Yr.</u>	<u>BA</u>	<u>G</u>	<u>AB</u>	<u>R</u>	<u>H</u>	<u>RBI</u>	<u>2B</u>	<u>3B</u>	<u>HR</u>	<u>SB/A</u>	<u>SO</u>	<u>BB</u>
1996	.280	56	193	36	54	24	5	4	2	16/17	16	10



Sophomore Angie Schreurs/1B
West Des Moines, Iowa
Education
Letters Earned at UNI: 1
Daughter of Dave and Audrey Schreurs
Birthdate: January 5, 1977

1997 Outlook...Angie will start at first base for the second consecutive year. A smart defensive player, she gives added power to the Northern Iowa line-up from the left side of the plate.

1996...Led the Panthers last season in five offensive categories, including doubles (12), on-base percentage (.403) and batting average (.323). The latter stat earned her the team's Slugger Award for the highest batting average.

High School...A four-year all-conference and a two-year all-state selection for Valley High School. She earned eight letters in softball and basketball.

<u>Yr.</u>	<u>BA</u>	<u>G</u>	<u>AB</u>	<u>R</u>	<u>H</u>	<u>RBI</u>	<u>2B</u>	<u>3B</u>	<u>HR</u>	<u>SB/A</u>	<u>SO</u>	<u>BB</u>
1996	.323	56	167	35	54	27	12	2	2	6/10	35	22



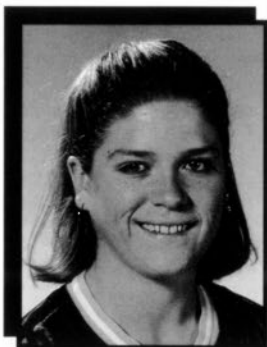
Freshman Heidi Fromherz/P
Milwaukie, OR
Communications
Daughter of Jim and Mary Fromherz
Birthdate: February 15, 1978

1997 Outlook...Heidi had the best fall season of the new recruits. She should compete with Jeannine Soncini for the number two spot in the rotation at the beginning of this spring season.

High School...An honorable mention all-league selection her junior year and a first team choice her senior year at Central Catholic High School. She was picked to play in the Oregon Senior All-Star Game her senior year. She won two letters in high school in softball.



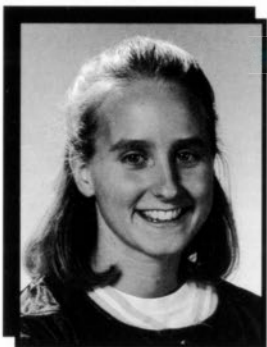
Northern Iowa Softball



Freshman Melissa Navntoft/P
Burlington, IA
Physical Education
Daughter of Ivan and Janet Navntoft
Birthdate: July 15, 1978

1997 Outlook...Melissa saw action as the main stopper this fall season for Northern Iowa. She should either continue this role in the spring, or compete for a starting position. With her bat, she may also see playing time as a designated player.

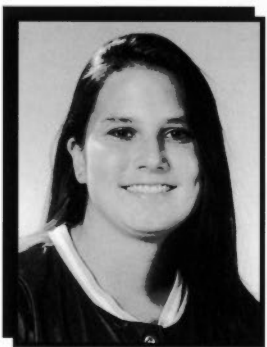
High School...Has five years of playing experience at Burlington High School where she earned all-conference and all-state selections in softball. She has played on the same high school team as sophomore Jackie Paulus.



Freshman Kylie Sloan/SS
Carlisle, IA
Biology
Daughter of Kurt and Jeani Sloan
Birthdate: February 4, 1978

1997 Outlook...Kylie needs to fill some big shoes at shortstop with the loss of Stacy Weber, but if the fall season is any indication, she should be up to the task. She is excellent defensively, and she can hit for average and power.

High School...Earned 16 letters in golf, basketball, volleyball and softball. She was an all-conference and all-state selection at Carlisle High School.



Freshman Jeannine Soncini/P
Flossmoor, IL
Political Science
Daughter of Carl and Barbara Soncini
Birthdate: January 12, 1978

1997 Outlook...Jeannine will be the number two or three starter in Northern Iowa's pitching rotation after a good fall season. She is working during the off-season to adjust to the added length of the pitcher's mound, and should be ready for a great '97 season.

High School...An all-conference selection for three years and an all-area pick for two at Homewood-Flossmoor High School. She was picked to play in the Illinois High School Super 60 Classic. Jeannine made the varsity squad eight times for volleyball, basketball and softball.



Freshman Jackie Watt/IF
East Dubuque, IL
Accounting
Daughter of Jim and Teresa Watt
Birthdate: March 16, 1978

1997 Outlook...Jackie will help provide depth in the infield, backing up both Kylie Sloan and Jackie Paulus. She saw her main action this fall as the designated player. She has average power with her bat, and is sound defensively.

High School...Won letters in basketball and softball for Dubuque Wahlert High School. She was a first team all-Mississippi Valley Conference selection.



1996 Season Game Summary

<u>Game Date</u>	<u>Opposing Team</u>	<u>Score</u>	<u>R-H-E/R-H-E</u>	<u>Overall</u>	<u>Pitcher of Record</u>
Feb 24, 1996	#Indiana State	9-1 W	9-7-0/1-4-2	1-0-0	Keiper (1-0)
Feb 24, 1996	#Missouri	7-5 W	7-11-4/5-3-1	2-0-0	Worms (1-0)
Feb 25, 1996	#St. Louis Univ.	4-0 W	4-7-1/0-3-2	3-0-0	Worms (2-0)
Feb 25, 1996	#Missouri	2-4 L	2-4-3/4-7-2	3-1-0	Keiper (1-1)
Mar 1, 1996	at St. Louis Univ.	6-0 W	6-8-0/0-4-1	4-1-0	Keiper (2-1)
Mar 1, 1996	at St. Louis Univ.	21-4 W (5 inn.)	21-17-3/4-2-3	5-1-0	Worms (3-0)
Mar 9, 1996	\$Drake	2-3 L (8 inn.)	2-4-2/3-6-1	5-2-0	Keiper (2-2)
Mar 10, 1996	\$SW Missouri State	2-12 L (5 inn.)	2-8-2/12-10-1	5-3-0	Worms (3-1)
Mar 10, 1996	\$Kansas	3-2 W	3-11-1/2-5-2	6-3-0	Keiper (3-2)
Mar 15, 1996	%Samford	7-1 W	7-11-5/1-5-0	7-3-0	Keiper (4-2)
Mar 15, 1996	%Georgia State	1-3 L (9 inn.)	1-6-3/3-4-2	7-4-0	Worms (3-2)
Mar 15, 1996	%Michigan	0-13 L (5 inn.)	0-2-1/13-15-1	7-5-0	Chase (0-1)
Mar 16, 1996	%Miami (Ohio)	3-5 L	3-6-1/5-8-2	7-6-0	Keiper (4-3)
Mar 16, 1996	%Illinois-Chicago	6-2 W	6-8-2/2-7-0	8-6-0	Worms (4-2)
Mar 17, 1996	at Florida A&M	12-1 W (6 inn.)	12-9-1/1-4-2	9-6-0	Keiper (5-3)
Mar 17, 1996	at Florida A&M	10-1 W (5 inn.)	0-8-1/1-3-3	10-6-0	Worms (5-2)
Mar 19, 1996	^Central Connecticut	10-0 W (6 inn.)	10-13-2/0-1-0	11-6-0	Keiper (6-3)
Mar 19, 1996	^Central Connecticut	7-1 W	7-13-1/1-3-0	12-6-0	Worms (6-2)
Mar 20, 1996	^Kentucky Wesleyan	1-0 W	1-3-0/0-2-4	13-6-0	Keiper (7-3)
Mar 20, 1996	^Missouri Southern	0-2 L	0-3-1/2-6-0	13-7-0	Worms (6-3)
Mar 22, 1996	&St. Louis Univ.	9-0 W	9-8-3/1-1-0	14-7-0	Keiper (8-3)
Mar 22, 1996	&Southern Illinois	3-0 W	3-6-0/0-4-1	15-7-0	Worms (7-3)
Mar 23, 1996	&Evansville	2-0 W	2-8-1/0-5-1	16-7-0	Keiper (9-3)
Mar 23, 1996	&Loyola-Chicago	2-1 W	2-3-0/1-6-0	17-7-0	Worms (8-3)
Apr 2, 1996	Coe College	8-0 W	8-11-0/0-2-0	18-7-0	Keiper (10-3)
Apr 2, 1996	Coe College	11-0 W (5 inn.)	11-9-0/0-1-2	19-7-0	Worms (9-3)
Apr 5, 1996	*at Indiana State	8-0 W (5 inn.)	8-10-1/0-1-3	20-7-0	Keiper (11-3)
Apr 5, 1996	*at Indiana State	3-0 W	3-6-1/0-6-1	21-7-0	Worms (10-3)
Apr 6, 1996	*at Illinois State	0-8 L (5 inn.)	0-4-1/8-12-1	21-8-0	Keiper (11-4)
Apr 6, 1996	*at Illinois State	0-8 L (5 inn.)	0-3-0/8-12-0	21-9-0	Worms (10-4)
Apr 7, 1996	*at Bradley	0-1 L	0-3-3/1-4-1	21-10-0	Keiper (11-5)
Apr 7, 1996	*at Bradley	5-4 W	5-9-2/4-11-2	22-10-0	Worms (11-4)
Apr 12, 1996	*Wichita State	3-2 W (8 inn.)	3-13-0/2-7-0	23-10-0	Keiper (12-5)
Apr 12, 1996	*Wichita State	4-5 L	4-9-1/5-6-2	23-11-0	Worms (11-5)
Apr 13, 1996	*Creighton	3-0 W	3-5-1/0-5-1	24-11-0	Keiper (13-5)
Apr 13, 1996	*Creighton	4-3 W (9 inn.)	4-10-0/3-10-1	25-11-0	Keiper (14-5)
Apr 17, 1996	at Nebraska	7-8 L	7-9-2/8-11-1	25-12-0	Keiper (14-6)
Apr 17, 1996	at Nebraska	3-7 L	3-6-1/7-6-0	25-13-0	Worms (11-6)
Apr 19, 1996	*Southern Illinois	7-2 W	7-7-2/2-9-1	26-13-0	Keiper (15-6)
Apr 19, 1996	*Southern Illinois	3-4 L (12 inn.)	3-9-2/4-10-1	26-14-0	Keiper (15-7)
Apr 20, 1996	*Evansville	6-3 W	6-5-2/3-6-3	27-14-0	Keiper (16-7)
Apr 20, 1996	*Evansville	5-0 W	5-7-0/0-5-0	28-14-0	Worms (12-6)
Apr 23, 1996	Mankato State	5-6 L	5-7-1/6-12-0	28-15-0	Worms (12-7)
Apr 23, 1996	Mankato State	4-5 L	4-5-2/5-9-2	28-16-0	Kimberly (0-1)
Apr 26, 1996	*at Tulsa	0-6 L	0-4-2/6-9-1	28-17-0	Keiper (16-8)
Apr 26, 1996	*at Tulsa	4-3 W	4-7-1/3-7-2	29-17-0	Worms (13-7)
Apr 27, 1996	*at SW Missouri	4-5 L (10 inn.)	4-5-3/5-9-3	29-18-0	Keiper (16-9)
Apr 27, 1996	*at SW Missouri	5-11 L	5-5-1/11-14-3	29-19-0	Worms (13-8)
Apr 30, 1996	Minnesota	4-2 W	4-9-0/2-7-0	30-19-0	Keiper (17-9)
May 1, 1996	Iowa State	9-1 W (6 inn.)	9-11-2/1-7-6	31-19-0	Keiper (18-9)
May 1, 1996	Iowa State	7-6 W	7-11-2/6-11-1	32-19-0	Worms (14-8)
May 4, 1996	*at Drake	0-6 L	0-1-1/6-9-2	32-20-0	Keiper (18-10)
May 4, 1996	*at Drake	4-3 W	4-8-0/3-8-0	33-20-0	Worms (15-8)
May 9, 1996	+Southern Illinois	0-2 L	0-3-1/2-5-1	33-21-0	Keiper (18-11)
May 9, 1996	+Tulsa	7-3 W	7-8-2/3-6-2	34-21-0	Keiper (19-11)
May 10, 1996	+Bradley	0-1 L	0-3-1/1-5-0	34-22-0	Keiper (19-12)

Missouri Invitational
 \$ SW Missouri Invitational
 % Florida State Invitational
 ^ Games in Pensacola, Florida
 & Southern Illinois Invitational
 * Missouri Valley Conference games
 + Missouri Valley Conference Tournament



Northern Iowa Softball

1996 Statistics (Includes 56 games)

1996 Batting Statistics (Bold denotes team leader)

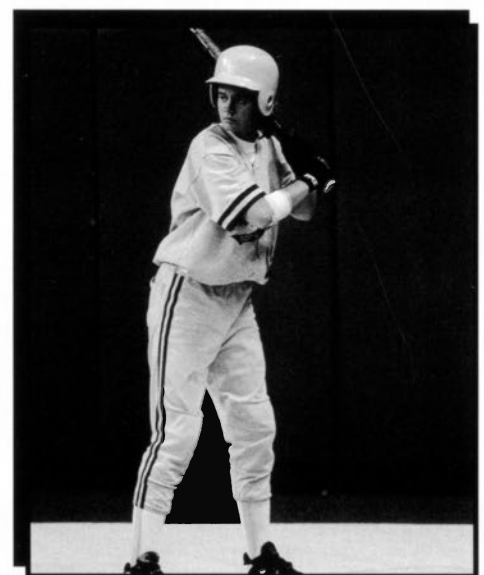
Player	G.	AB	R	H	RBI	Avg.	2B	3B	HR	BB	HBP	Slug%	OB%	SB/A	S/SF	SO
Jen Dean	9	27	11	10	10	.370	0	0	4	3	0	.815	.433	5/5	0/0	5
Jami Steinkamp	36	6	13	2	3	.333	1	0	0	0	0	.500	.333	3/3	0/0	0
Angie Schreurs	56	167	35	54	27	.323	12	2	2	22	1	.455	.403	6/10	3/1	35
Deanne Fick	52	132	22	41	27	.311	10	3	1	12	0	.455	.368	10/11	8/0	23
Jody Dean	55	158	35	49	35	.310	6	2	5	8	2	.468	.347	14/18	5/2	18
Amber Sampson	56	153	28	44	17	.288	9	3	0	10	3	.386	.343	10/10	6/0	26
Jackie Paulus	56	193	36	54	24	.280	5	4	2	10	1	.378	.319	16/17	9/0	16
Stacy Weber	56	170	27	47	27	.276	13	2	1	15	0	.394	.335	10/11	6/0	13
Kari McLaughlin	56	176	25	43	25	.244	2	0	0	8	0	.256	.276	12/17	11/1	16
Kristen Dalrymple	56	158	9	35	24	.222	7	1	2	14	1	.316	.286	0/0	2/2	36
Mickey Shenk	51	136	12	30	28	.221	8	1	1	6	1	.316	.257	2/2	3/1	11
Maggie Sellers	17	5	9	0	0	.000	0	0	0	0	0	.000	.000	0/1	0/0	3
Tabitha Garrett	3	1	0	0	0	.000	0	0	0	0	0	.000	.000	0/0	0/0	1
UNI	56	1482	262	409	247	.276	73	18	18	108	9	.386	.328	88/105	53/7	203
Opponents	56	1446	176	361	171	.250	63	13	7	135	14	.326	.318	51/68	54/9	215

1996 Pitching Statistics

Pitcher	G	GS	CG	Sho	S	W-L	ERA	IP	R	ER	H	2B	3B	HR	WP	HBP	BB	SO
Kandy Keiper	31	28	27	8	0	19-12	1.63	193.2	68	45	173	28	4	3	15	7	41	105
Shelby Worms	28	26	20	4	1	15-8	2.88	167.2	89	69	160	29	6	4	14	7	87	108
Jackie Kimberly	4	1	0	0	0	0-1	5.73	11.0	13	9	25	6	3	0	5	0	4	1
Leslie Chase	2	1	0	0	0	0-1	25.20	1.2	6	6	3	0	0	0	0	0	3	1
UNI	56	56	47	12	1	34-22	2.41	374.0	176	129	361	63	13	7	34	14	135	215
Opponents	56	56	34	9	1	22-34	3.66	367.1	262	192	409	73	18	18	37	9	108	203

1996 Fielding Statistics

Player	C	PO	A	Err	Pct.
Mickey Shenk	131	118	13	0	1.000
Shelby Worms	37	3	34	0	1.000
Kristen Dalrymple	143	116	26	1	.993
Angie Schreurs	476	452	20	4	.992
Amber Sampson	62	54	7	1	.984
Jackie Paulus	262	140	112	10	.962
Deanne Fick	57	52	2	3	.947
Kandy Keiper	79	9	65	5	.937
Stacy Weber	200	64	120	16	.920
Jody Dean	83	73	2	8	.904
Kari McLaughlin	171	32	122	17	.901
Jen Dean	17	3	8	6	.647
UNI	1718	1116	531	71	.959
Opponents	1695	1096	513	86	.949



In her first year as a Panther, freshman Angie Schreurs led the team in four offensive categories.

Northern Iowa Division I Records (Since 1983)

ALL-TIME BESTS ESTABLISHED BEFORE 1983

GAMES

Highest Winning Pct.: .941, 32-2 (1977)
Most Consecutive Games Won: 18 (1977)

BATTING (Individual)

Highest Batting Avg., Season (min. 2.0 at bats/game): .425 Sue Coakley (1978)

PITCHING (Individual)

Most Strikeouts, Career: 413, Jennifer Berger (1982-84)
Most Strikeouts, Season: 216, Jennifer Berger (1982)
Most Shutouts, Season: 10, Patty Stockman (1977)

BATTING (Team)

Most Runs Scored per Game: 9.8 (1974)
Most Runs Scored in a Game: 34 vs. Iowa (1974)
Most Hits per Game: 8.0 (tie) (1977)
Most Walks, Season: 128 (1982)

Batting

Team

Highest Team Batting Avg., Season: .297 (1993)
Most at Bats, Season: 1641 (1991)
Most Runs, Season: 266 (1994)

***Most Runs per Game: 4.68 (1996)**

*Most Runs, Game: 23 vs. Benedictine (1989)

Most Hits, Season: 433 (1994)

*Most Hits Per Game: 8.0 (1992)

Most Doubles, Season: 73 (1996)

Most Triples, Season: 31 (1992)

Most Home Runs, Season: 26 (1994)

Most Runs Batted In, Season: 248 (1994)

Most Stolen Bases, Season: 88 (1996)

*Most Walks, Season: 111 (1994)

Most Strikeouts, Season: 206 (1994)

Season (Individual)

Most Games: 64, Jennifer Peters, Heather Daters (1991)
Most Runs: 42, Paula Evers (1985)
Most Hits: 65, Chris Ehlert (1989)
Most Strikeouts: 45, Jen Dean (1994)
Most Doubles: 18, Vicki White (1990)
Most Triples: 11, Laura Novotny (1992)
Most Home Runs: 8, Deena Chipp (1991); Jen Dean (1994)
Most Runs Batted In: 44, Jen Dean (1994); Stacy Weber (1994)
Most Runs Batted In, Game: 7, Stacy Weber (1993)
Most Sacrifices: 33, Jenny Schultz (1988)
Most Stolen Bases: 22, Jen Dean (1994); Jaye Donlea (1994)
Most Consecutive Games With a Hit: 14, Laura Novotny (1991)
Most Times Hit by a Pitch: 4, Jaye Donlea (1995)
Most Walks: 29, Vicki White (1991)
*Highest Batting Avg. (2.0 at bats/game): .413, Deena Chipp (1993)
Most At Bats: 207, Cindy Franzen (1991)
Most Total Bases: 115, Angie Schreurs (1996)
Highest Slugging Pct. (2.0 at bats/game): .815, Jen Dean (1996)

Career

Most Games: 233, Vicki White (1989-92)
Most Doubles: 43, Vicki White (1989-92)
Most Triples: 24, Laura Novotny (1990-93)
Most Home Runs: 21, Deena Chipp (1990-93)
Most Total Bases: 331, Deena Chipp (1990-1993)
*Highest Slugging Pct. (min. 300 AB): .511, Deena Chipp (1990-93)
Most RBI: 114, Stacy Weber, (1993-96)
Most Hits: 209, Chris Ehlert (1986-89)
Highest Batting Avg. (min. 300 AB): .347, Deena Chipp (1990-93)
Most Runs: 130, Heather Daters (1991-94)
Most At Bats: 679, Paula Evers (1985-88)
Most Sacrifices: 85, Jenny Schultz (1987-90)
Most Stolen Bases: 34, Jaye Donlea (1994-95)
Most Walks: 79, Heather Daters (1991-94)

Games

Most Games, Season: 64 (1991)
Most Games Won, Season: 40 (1994)
Most Games Lost, Season: 40 (1991)
*Highest Winning Pct.: .674, 31-15 (1983)
Lowest Winning Pct.: .375, 24-40 (1991)
*Most Consecutive Games Won: 11 (1989)
Most Consecutive Games Lost: 9 (1985)
Longest Game: 26 inn., Oklahoma City 0-0 (1984)

Fielding (Season)

Most Putouts: 539, Cindy Franzen (1989)
Most Assists: 202, Holly Harrison (1991)
Most Assists by an Outfielder: 16, Jenny Schultz (1988)
***Highest Fielding Pct (min. 1.5 chances/game): 1.000, Mickey Shenk (1996)**
Most Errors: 43, Deena Chipp (1990)

Fielding (Career)

Most Putouts: 1,574, Cindy Franzen (1989-91)
Most Assists: 436, Paul Evers (1985-88)
Most Assists by an Outfielder: 34, Jenny Schultz (1987-90)
Highest Fielding Pct. (min. 400 chances): .983, Cindy Franzen (1989-91)

Pitching

Team

Lowest Staff ERA, Season: 1.02, (1983)

Season (Individual)

Most Victories: 21, Sarah O'Byrne (1990)
Most Losses: 20, Sarah O'Byrne (1990)
Most Games: 47, Sarah O'Byrne (1990)
Most Starts: 38, Sarah O'Byrne (1990)
Most Complete Games: 34, Sarah O'Byrne (1990)
Lowest ERA (Min. 25% of team's innings): 0.63, Krista Fosbinder (1986)
Most Innings Pitched: 277.7 Sarah O'Byrne (1990)
Most Consecutive Scoreless Innings: 46, Sarah O'Byrne (1988)
*Most Shutouts: 9, Sarah O'Byrne (1988)
Most Consecutive Shutouts: 6, Sarah O'Byrne (1988) Kandy Keiper (1996)
*Most Strikeouts: 125, Jennifer Berger (1983)
Most Hits Allowed: 235, Sarah O'Byrne (1990)
Most Runs Allowed: 101, Connie Fangmann (1991); Kandy Keiper (1995)
Most Earned Runs Allowed: 72, Sarah O'Byrne (1990); Connie Fangmann, Desiree Bebout (1991)
Most Home Runs Allowed: 6, Kandy Keiper (1993); Desiree Bebout (1993)
Most Walks Allowed: 87, Shelby Worms (1996)

Career

Most Victories: 60, Sarah O'Byrne (1987-90)
Most Losses: 50, Krista Fosbinder (1986-89)
Most Games: 122, Krista Fosbinder (1986-89)
Most Starts: 108, Sarah O'Byrne (1987-90)
Most Complete Games: 101, Krista Fosbinder (1986-89)
Lowest ERA (min. 300 innings): 1.11, Krista Fosbinder (1986-1989)
Most Innings: 766, Krista Fosbinder (1986-89)
Most Shutouts: 28, Krista Fosbinder (1986-89)
*Most Strikeouts: 407, Krista Fosbinder (1986-89)
Most Hits Allowed: 626, Sarah O'Byrne (1987-90)
Most Runs Allowed: 284, Sarah O'Byrne (1987-90)
Most Earned Runs Allowed: 199, Kandy Keiper (1993-96)
Most Home Runs Allowed: 11, Krista Fosbinder (1986-89)
Most Walks Allowed: 167, Krista Fosbinder (1986-89)

*Record is not all-time best or is tied for all-time best



Northern Iowa Softball

1996 Missouri Valley Conference Season

1996 Final MVC Standings

Missouri Valley							Overall Records					
	W	L	T	Pct.	H	A	W	L	T	Pct.	H	A/N
Illinois State	15	2	0	.882	8-2	7-0	35	19	0	.648	13-6	22-13
Drake	14	5	1	.725	9-1	5-4-1	31	14	1	.685	13-3	18-11-1
SW Missouri	13	6	0	.684	7-1	6-5	34	22	0	.607	14-4	20-18
S. Illinois	11	9	0	.550	9-3	2-6	26	21	0	.553	14-5	12-16
N. Iowa	11	9	0	.550	6-2	5-7	34	22	0	.607	11-4	23-18
Wichita State	10	10	0	.500	8-4	2-6	31	31	0	.500	12-8	19-23
Bradley	8	10	1	.447	6-2-1	2-8	24	34	1	.415	12-4-1	12-30
Tulsa	8	12	0	.400	5-5	3-7	24	33	0	.421	9-5	15-28
Creighton	6	12	0	.333	5-5	1-7	17	24	0	.415	6-8	11-16
Evansville	5	14	0	.263	3-4	2-10	22	28	0	.440	8-5	14-23
Indiana State	2	14	0	.125	1-7	1-7	13	37	0	.260	6-11	7-26

1996 All-Conference Honors

First Team

P	Kerri Bartlow	Jr.	Illinois St.
P	Jamie Schutteck	Jr.	So. Illinois
P	Stephanie Wright	Sr.	Drake
C	Toni Rieke	Sr.	SW Mo.
1B	Aimee DeKeyser	Jr.	Drake
2B	Jami Koss	Sr.	So. Illinois
3B	Becky Lis	Jr.	So. Illinois
SS	Jennifer Bachman	Jr.	Wichita St.
SS	Ronnie Marmitt	Jr.	Illinois St.
OF	Christine Knotts	Sr.	So. Illinois
OF	Christy Lunceford	Jr.	Creighton
OF	Natalie Quinn	Sr.	Bradley
OF	Priscilla Welch	Jr.	Illinois St.
UT	Kate Madden	Sr.	SW Mo.
DP	Angela Fuller	So.	Tulsa

Second Team

P	Kerri Bartholomew	Sr.	Tulsa
P	Heather Buchanan	Jr.	Evansville
P	Dawn Fowler	Sr.	Illinois St.
P	Kandy Keiper	Sr.	No. Iowa
C	Angela Curry	Jr.	Illinois St.
C	Julie Jehle	Sr.	Bradley
1B	Toni Rios	Jr.	Illinois St.
2B	Tuesday Briggs	Sr.	Tulsa
2B	Casi Cusac	Sr.	Illinois St.
2B	Diedre Shores	So.	SW Mo.
3B	Tricia Polhert	So.	Drake
3B	Becky Kroll	Sr.	Creighton
SS	Tara Pearson	Jr.	Bradley
SS	Stacy Weber	Sr.	No. Iowa
OF	Heather Anderson	Jr.	SW Mo.
OF	Jenny Ehlert	Jr.	Drake
OF	Bobbie Paull	Sr.	Wichita St.
OF	Becky Youngquist	So.	Illinois St.

Most Valuable Player

Kate Madden, Southwest Missouri St.

Rookie of the Year

Heather Stella, Illinois State

Coach of the Year

Melinda Fischer, Illinois State

UNI MVC All-Tournament Team

Kandy Keiper

1996 UNI MVC All-Academic

Kari McLaughlin, First Team
Deanne Fick, Honorable Mention

1996 UNI's District VII CoSIDA All-Academic Team

Kari McLaughlin

The Missouri Valley Conference

A commitment to excellence, both in the classroom and athletic arena, has been a trademark of the Missouri Valley Conference since its inception in the winter of 1907. Built firmly on a solid foundation, the Missouri Valley Conference has made great strides and streamlined its resources and skills to become one of the nation's most progressive athletic conferences.

Athletic accomplishments on the men's athletics side include four national basketball championships, 17 trips to the NCAA Final Four and a 1989 national baseball championship.

Obviously, the inclusion of women's programs under the Missouri Valley banner--the oldest athletic conference west of the Mississippi River--has provided an immediate boost. The Gateway Collegiate Athletic Conference--which began in 1982--merged with the Missouri Valley Conference and was unveiled as part of the new MVC on July 1, 1992.

The St. Louis-based Missouri Valley Conference began its first tradition long ago. Initiated as a basketball conference in 1907, the MVC has produced many individual and team national champions in basketball and other sports.

Seeds for the creation of the conference were planted by eight administrators representing five institutions who gathered at the Midland Hotel in Kansas City, MO, on January 12, 1907. The five schools which formed the Missouri Valley Intercollegiate Athletic Association were Washington University of St. Louis, and the state universities of Iowa, Kansas, Missouri and Nebraska. Two months after the initial meeting, two more institutions--Drake University and Iowa State College--were admitted to the league.

In the fall of 1907, basketball became the first competitive sport. Today, the Missouri Valley Conference sponsors the following sports: baseball, men's and women's basketball, men's and women's cross country and track (indoor and outdoor), men's and women's golf, men's and women's soccer, softball, men's and women's swimming, men's and women's tennis and women's volleyball.

MVC student-athletes and coaches have become household names during the conference's illustrious history,

both during their collegiate careers and, for some, professional careers which have followed stardom in the Missouri Valley Conference. Individual basketball greats such as Wichita State's Antoine Carr, Bradley's Hersey Hawkins, Creighton's Benoit Benjamin and Southern Illinois' Ashraf Amaya and Chris Carr are still active on NBA rosters, while past stars such as Larry Bird, Oscar Robertson, Chet Walker, Walt Frazier, Wes Unseld, Paul Silas and many others are still to be found in the Missouri Valley's record books.

Missouri Valley Conference student-athletes also have had their share of success in the classroom. Peter Bednekoff, a track athlete from Tulsa, was a 1988 Rhodes Scholar, and Creighton's Bill O'Dowd, a 4.0 student who earned a master's degree in four years, was named one of the top 20 undergraduates in the country by *USA Today* in 1990. In 1995-96, two MVC student-athletes were named national academic Players of the Year in their respective sports (*Drake's Tricia Wakley in women's basketball and Southern Illinois' Christine Knotts in softball*).

Some 31 institutions in 13 states have at one time or another been a part of what is now the Missouri Valley Conference. Membership has stabilized in the past decade, and now a league that has survived in what has been a volatile environment for the past few years continues its evolution with women's athletics maintaining its ascent. A listing of current members is below.

Doug Elgin is in his ninth year as MVC commissioner. A 1973 graduate of Lafayette College, Elgin previously served as assistant commissioner at the Sun Belt Conference for five years after three years as the University of Virginia's sports information director. A native of Hagerston, Md., Elgin received his master's from Ohio University in 1975.

MVC Members

Bradley	Indiana State
Creighton	Northern Iowa
Drake	Southern Illinois
Evansville	Southwest Missouri
Illinois State	Wichita State



Missouri Valley Conference

MVC Directory

Missouri Valley Conference
1000 St. Louis Union Station, Suite 333
St. Louis, MO 63103
Phone: (314) 421-0339
Fax: (314) 421-3505
Scoreboard: (314) 997-9877
Bulletin Board: (314) 421-0444
Internet Address: <http://www.mvc.org>

J. Douglas Elgin, Commissioner
Patty Viverito, Sr. Assoc. Commissioner
Joe Mitch, Assoc. Commissioner
Jack Watkins, Asst. Commissioner
Mike Kern, Asst. Commissioner-Info Services
Dan Butterly, Director of Marketing
Helen Heugel, Asst. to the Commissioner
Jan Moore, Secretary/Receptionist
Melody Yount, Communication Intern
Lainan Schmidt, Marketing Intern

1996-97 Championships

Women's Tennis (Individual)
Oct. 11-12-13 - St. Louis, MO
Men's Tennis (Individual)
Jan. 24-25-26 - Des Moines, IA
Men's and Women's Cross Country
Nov. 2 - Cedar Falls, IA
Women's Soccer
Nov. 7,8,10 - Evansville, IN
Men's Soccer
Nov. 14,16 - Omaha, NE
Volleyball Championship
Nov. 21-22-23 - Springfield, MO
Men's and Women's Swimming & Diving
Dec. 6-7-8 - Carbondale, IL
Men's and Women's Indoor Track & Field
Feb. 21-22 - Carbondale, IL
Men's and Women's Outdoor Track & Field
May 16-17 - Normal, IL
Men's Basketball
March 1-2-3 - St. Louis, MO
Women's Basketball
March 6-7-8 - Springfield, MO
Women's Golf
April 21-22 - Springfield, MO
Men's Golf
April 28-29 - St. Louis, MO
Men's Tennis (Team)
April 25-26-27 - Evansville, IN
Women's Tennis (Team)
April 25-26-27 - Wichita, KS
Softball Championship
May 8-9-10 - Cedar Falls, IA
Baseball Championship
May 14-15-16-17 - TBA



Doug Elgin
Commissioner



Patty Viverito
Sr. Assoc. Commissioner



Joe Mitch
Assoc. Commissioner



Northern Iowa Softball

1996 MVC Rankings

MVC Games Only

Team Batting (by Avg.)

1. SW Missouri St.	.323
2. Illinois State	.317
3. Bradley	.311
4. Southern Illinois	.305
5. Drake	.295
6. Creighton	.281
7. Tulsa	.267
8. Wichita State	.244
9. Northern Iowa	.242
10. Evansville	.209
11. Indiana State	.190

Team Pitching (by ERA)

1. Drake	1.69
2. SW Missouri St.	2.03
3. Illinois State	2.11
4. Wichita State	2.19
5. Northern Iowa	2.70
6. Evansville	2.92
7. Southern Illinois	3.12
8. Tulsa	3.60
9. Bradley	3.66
10. Creighton	3.73
11. Indiana State	4.64

Team Fielding (by Pct.)

1. Illinois State	.964
2. Northern Iowa	.962
3. Drake	.961
4. Southern Illinois	.958
5. Bradley	.957
6. Wichita State	.956
7. SW Missouri St.	.947
8. Evansville	.944
Creighton	.944
10. Tulsa	.942
11. Indiana State	.909

<u>Individual Batting</u>	<u>Avg.</u>
Kate Madden, SMSU	.527
Christy Lunceford, CU	.455
Becky Lis, SIU	.450
Priscilla Welch, ILSU	.434
Jenny Ehlert, DU	.424

<u>Hits</u>	<u>H</u>
Kate Madden, SMSU	39
Natalie Quinn, BU	29
Jami Koss, SIU	28
Tara Pearson, BU	27
Becky Lis, SIU	27

<u>Runs Scored</u>	<u>R</u>
Kate Madden, SMSU	22
Becky Lis, SIU	20
Jami Koss, SIU	18
Tara Pearson, BU	18
Jennifer Feldmeier, SIU	17
Tricia Polhert, DU	17

<u>Doubles</u>	<u>2B</u>
Christy Lunceford, CU	8
Natalie Quinn, BU	7
Heather Anderson, SMSU	7
Shannon Hutson, DU	7
Jamie Schutteck, SIU	7

<u>Triples</u>	<u>3B</u>
Jami Koss, SIU	3
Michelle Moores, WSU	3
Becky Lis, SIU	3
Jackie Paulus, UNI	2
Stacy Weber, UNI	2

<u>Homeruns</u>	<u>HR</u>
Jody Dean, UNI	3
Amy Thompson, DU	3
Kerri Bartlow, ILSU	3
Becky Kroll, CU	2
Jackie Paulus, UNI	2

<u>Runs Batted In</u>	<u>RBI</u>
Natalie Quinn, BU	24
Heather Anderson, SMSU	23
Jamie Schutteck, SIU	19
Becky Lis, SIU	16
Toni Rieke, SMSU	16

<u>Stolen Bases</u>	<u>SB</u>
Kate Madden, SMSU	18
Jami Koss, SIU	12
Tara Pearson, BU	10
Heidi Geier, CU	10
Keri Dowell, SMSU	9

<u>Wins</u>	<u>W-L</u>
Stephanie Wright, DU	9-2
Wendy Farthing, SMSU	8-1
Kerri Bartlow, ILSU	7-1
Jamie Schutteck, SIU	7-5
Kandy Keiper, UNI	6-6

<u>Innings Pitched</u>	<u>IP</u>
Amy Elza, BU	81.0
Jamie Schutteck, SIU	80.1
Stephanie Wright, DU	77.2
Kandy Keiper, UNI	75.1
Stacey Hart, WSU	69.0

<u>Strikeouts</u>	<u>SO</u>
Jamie Schutteck, SIU	51
Keri Bartholomew, TU	49
Heather Buchanan, UE	45
Stephanie Wright, DU	42
Amy Elza, BU	42
Kandy Keiper, UNI	40

<u>Shutouts</u>	<u>Sho</u>
Stephanie Wright, DU	3
Amy Elza, BU	3
Jamie Schutteck, SIU	2
Michelle Petersen, INSU	2
Kandy Keiper, UNI	2

<u>Earned Run Average</u>	<u>ERA</u>
Trudi Maosi, WSU	0.75
Stephanie Wright, DU	0.90
Dawn Fowler, ILSU	1.48
Heather Buchanan, UE	1.56
Kerri Bartlow, ILSU	1.60

The Panthers ranked in the nation's Top 35 in four categories:

27th	Stolen Bases	1.57/G
29th	Doubles	1.30/G
T35th	Triples	.32/G
T35th	Fielding Pct.	.959

1996 MVC Rankings

All Games

Team Batting (by Avg.)

1. Illinois State	.311
SW Missouri St.	.311
3. Southern Illinois	.289
4. Tulsa	.285
5. Creighton	.284
6. Bradley	.281
7. Northern Iowa	.276
8. Drake	.274
9. Evansville	.266
10. Wichita State	.254
11. Indiana State	.202

Team Pitching (by ERA)

1. Drake	1.55
2. Southern Illinois	2.19
3. Wichita State	2.33
4. Northern Iowa	2.41
5. SW Missouri St.	2.47
6. Evansville	2.77
7. Illinois State	2.86
8. Creighton	3.51
9. Tulsa	3.65
10. Indiana State	3.95
Bradley	3.95

Team Fielding (by Pct.)

1. Illinois State	.967
2. Drake	.960
3. Northern Iowa	.959
4. Wichita State	.954
5. Evansville	.953
6. Southern Illinois	.951
7. Creighton	.949
8. Bradley	.948
9. SW Missouri St.	.947
10. Tulsa	.929
11. Indiana State	.918

<u>Individual Batting</u>	<u>Avg.</u>
Kate Madden, SMSU	.454
Christy Lunceford, CU	.419
Christine Knotts, SIU	.413
Priscilla Welch, ILSU	.400
Becky Lis, SIU	.396

<u>Hits</u>	<u>H</u>
Kate Madden, SMSU	83
Natalie Quinn, BU	74
Priscilla Welch, ILSU	70
Tara Pearson, BU	68
Angela Fuller, TU	65

<u>Runs Scored</u>	<u>R</u>
Kate Madden, SMSU	59
Tara Pearson, BU	45
Natalie Quinn, BU	42
Ronnie Marmitt, ILSU	42
Becky Lis, SIU	41
Diedre Shores, SMSU	41

<u>Doubles</u>	<u>2B</u>
Natalie Quinn, BU	21
Becky Lis, SIU	15
Bobbie Paull, WSU	15
Heather Anderson, SMSU	14
Jamie Schutteck, SIU	13
Stacy Weber, UNI	13

<u>Triples</u>	<u>3B</u>
Kate Madden, SMSU	5
Becky Lis, SIU	5
April Long, SIU	5
Betsy Youngquist, ILSU	5
Jackie Paulus, UNI	4

<u>Homeruns</u>	<u>HR</u>
Angela Fuller, TU	12
Natalie Quinn, BU	8
Kerri Bartlow, ILSU	6
Heather Anderson, SMSU	6
Jody Dean, UNI	5

<u>Runs Batted In</u>	<u>RBI</u>
Natalie Quinn, BU	54
Heather Anderson, SMSU	46
Heather Stella, ILSU	45
Toni Rieke, SMSU	43
Angela Fuller, TU	43

<u>Stolen Bases</u>	<u>SB</u>
Kate Madden, SMSU	36
Tara Pearson, BU	35
Jami Koss, SIU	25
Keri Dowell, SMSU	22
Heidi Geier, CU	19

<u>Wins</u>	<u>W-L</u>
Kandy Keiper, UNI	19-12
Stephanie Wright, DU	17-7
Jamie Schutteck, SIU	17-10
Amy Elza, BU	16-16
Kate Madden, SMSU	15-8
Shelby Worms, UNI	15-8

<u>Innings Pitched</u>	<u>IP</u>
Amy Elza, BU	218.1
Stacey Hart, WSU	200.2
Jamie Schutteck, SIU	197.2
Kandy Keiper, UNI	193.2
Kerri Bartlow, ILSU	174.2

<u>Strikeouts</u>	<u>SO</u>
Kerri Bartholomew, TU	138
Jamie Schutteck, SIU	126
Stephanie Wright, DU	111
Amy Elza, BU	108
Shelby Worms, UNI	108
Kandy Keiper, UNI	105

<u>Shutouts</u>	<u>Sho</u>
Kandy Keiper, UNI	8
Jamie Schutteck, SIU	8
Amy Elza, BU	7
Sarah Haak, DU	6
Stacey Hart, WSU	6

<u>Earned Run Average</u>	<u>ERA</u>
Stephanie Wright, DU	1.17
Heather Buchanan, UE	1.62
Kandy Keiper, UNI	1.63
Jamie Schutteck, SIU	1.74
Turdi Maosi, WSU	1.75

Since the first season for the Missouri Valley Conference in 1993, UNI has finished with a fielding percentage of .950 or better and a team ERA of 2.50 or lower in 3 out of 4 seasons.

<u>Year</u>	<u>Fielding %</u>	<u>ERA</u>
1993	.914	2.09
1994	.955	2.04
1995	.955	2.81
1996	.959	2.41



Northern Iowa Yearly Results

Results prior to 1974 not available

1974 (15-3)

Luther 14-2, 2-0
Graceland 2-3, 27-1
Grand View 18-4, 9-1
Iowa State 6-5, 7-3
Luther 6-3, 7-6
Iowa 13-0, 34-1
Wartburg 4-3, 5-4

IAIAW

Championships (3rd)

Graceland 9-2
Buena Vista 11-1
Luther 1-2
Iowa State 1-4

Head Coach: Jane

Mertesdorf

1975 (20-4)

Luther 3-0, 5-6
Iowa 10-0, 6-4
Iowa State 7-1, 10-2
Graceland 8-3
Kansas State 3-4 (8)
Wartburg 15-1, 9-1

IAIW District

Championships (1st)

Wartburg 5-1
Luther 4-0, 4-0

IAIAW State

Championships (1st)

Graceland 12-3
Iowa Wesleyan 10-0
Iowa State 2-1, 3-2

Women's College

World Series (2nd)

Oklahoma 5-0
Michigan State 4-3
Kansas 4-1
Nebraska-Omaha 0-1
Michigan State 7-3
Nebraska-Omaha 11-1, 4-6

Head Coach: Jane

Mertesdorf

1976 (23-3)

Iowa 11-0
Luther 3-0
Wartburg 3-2, 8-1
Iowa State 7-4, 1-0
Luther 1-0
Graceland 8-0, 15-0
Wartburg 5-0, 1-0
Luther 1-0, 3-4
Mankato State 10-0
Minnesota 10-0
Moorhead State 11-0

IAIAW

Championships (1st)

William Penn 10-0

Iowa State 9-1

Luther 7-2

Women's College

World Series (top 6)

N. State College (SD) 3-1
Arizona State 0-2
Indiana State 10-2
Texas 6-0
Northern Colorado 0-1

Head Coach: Jane

Mertesdorf

1977 (30-2)

Wartburg 4-3, 9-1
Nebraska-Omaha 9-3, 7-2
Iowa 6-5, 7-0
Grand View 12-0, 12-2
Mt. Mercy 6-1, 7-1

IAIAW District

Championships (1st)

Upper Iowa 13-0
Luther 3-2
Iowa State 2-0, 1-0
Wartburg 9-0, 10-3
Waldorf (Exhib.) 12-0, 9-0
Luther 0-1, 13-0

IAIAW State

Championships (1st)

Mt. Mercy 9-0
William Penn 2-0
Iowa State 2-1, 4-2

AIABW Region 6

Championships (1st)

North Dakota State 4-0
Tarkio 1-0
SW Missouri State 3-2, 6-1

Women's College

World Series (1st)

Southern Illinois 3-0
Kansas 4-0
Michigan State 7-3
Arizona 1-0 (8),
0-1 (9), 7-0

Head Coach: Jane

Mertesdorf

1978 (21-11)

Wartburg 2-1, 5-3
Luther 4-3, 0-1
Grand View 4-3, 5-1
Iowa 1-5
Luther 1-4
William Penn 5-3, 5-4
Drake 13-3, 10-3
Iowa State 2-4, 9-7
Loras 2-4, 0-5
Loras (2 Defaults)
Minnesota 9-2, 0-3

IAIAW District

Championships (1st)

Upper Iowa 13-4

Luther 7-5

Wartburg 7-3, 7-0

IAIAW State

Championship (3rd)

Central 4-2
Mt. Mercy 4-2
Grand View 1-2
Iowa State 1-2

AIABW Region 6

Championship (4th)

Minnesota 0-4
South Dakota 11-2
Luther 8-3
Kansas 0-5

Head Coach: Jane

Mertesdorf

1979 (22-10)

Wartburg 4-7, 6-5
Wichita State 10-2
Nebraska 2-5
Wayne State 5-4
Emporia State 1-6
Drake 1-0 (9), 5-1
St. Cloud State 6-3, 6-5
Minnesota 5-7
Minnesota JV 2-3
Iowa State 0-1, 4-3 (10)
Luther 15-5 (5), 5-4
Mt. Mercy 2-3, 10-6
Loras 1-0, 8-2

IAIAW District

Championships (1st)

Luther 7-2
Upper Iowa 5-2
Wartburg 8-2, 3-1
Grand View 1-3, 2-1

IAIAW State

Championships (2nd)

Iowa Wesleyan 8-0
Iowa State 5-0
William Penn 3-1
Drake 0-1 (12)
William Penn 6-5 (8)
Drake 1-2

Head Coach: Meredith

Bakley

1980 (31-15)

Hawaii-Hilo Invite (2nd)

Texas Women's 0-1
Utah State 0-2
Northern Colorado 0-1
Golden West State 1-0, 4-5
Northern Colorado 1-5
Hilo Comets 1-0, 0-1, 10-0
Northern Colorado 5-3
Texas Women's 2-3
Utah State 1-0

Minnesota Invite (3rd)

Iowa State 0-3
Northwestern 7-2
Iowa 6-0
Minnesota 2-6
Northwestern 6-0
Wartburg 10-0, 4-0
Iowa 7-1, 1-0
Nebraska-Omaha 8-1
Nebraska 1-5
Northwest Missouri State 8-5
South Dakota 5-2
Wayne State 2-3
Grand View 2-0, 2-6
Luther 5-0, 2-0
Loras 2-0, 11-0
Central 7-0, 7-0
Mt. Mercy 5-3, 8-6
Upper Iowa (2 Forfeits)
Drake 6-3, 2-4
Clarke College 18-0 (5), 9-0

IAIAW State

Championship (3rd)

Westmar 3-1
Northwestern College 1-0 (9)
William Penn 0-3
Drake 1-5

Head Coach: Meredith

Bakley

1981 (28-15)

Texas-Arlington 0-1 (9), 2-1
Texas Women's 1-4, 2-3
Iowa State 1-2
South Carolina 4-5
Western Michigan 2-3
North Texas State 9-0
Oklahoma City 6-1
Texas Women's 1-3
Wartburg 12-2 (5)
Grand View 0-1 (8)
William Penn 3-2, 4-1
Mt. Mercy 4-1, 12-0 (6)
St. Ambrose 3-2 (8), 3-1
Iowa 5-4, 4-1
Iowa State 3-0, 1-2
Colorado State 3-0
Wyoming 5-2
Nebraska-Omaha 4-3
William Penn 6-2, 7-2
Luther 7-1, 13-0 (5)
Ellsworth (Exhib.) 4-0, 1-0
Loras 1-4, 12-0 (5)

IAIAW Sectionals (3rd)

Grand View 4-0
Drake 2-1
Northwestern College 1-5
Drake 1-5

IAIAW State

Championship (3rd)

Northern Iowa Softball



St. Ambrose 0-2
Loras 9-1
St. Ambrose 3-0
Grand View 0-5

IAIAW Region 6

Championship (4th)

Moorhead State 7-0
South Dakota 2-1
Northeast Missouri State 0-1
St. Cloud State 6-0 (8)
Grand View 0-1

Head Coach: Meredith Bakley

1982 (35-15-1)

Oklahoma Baptist 3-6, 13-5
Southern Illinois 3-4 (8)
Oklahoma 0-6
Oklahoma City 7-3
Texas-Arlington 1-6
Oklahoma City 11-2 (5), 1-6
Southwest Missouri State 2-7
Southern Illinois 1-0 (10)
Minnesota 1-9
William Penn 3-1, 3-2 (9)
St. Ambrose 3-0, 4-2
Grand View 0-4, 12-3
Iowa 5-0, 0-3
Iowa State 0-1 (8), 5-5 (5)

Missouri Western

Invite (2nd)

Wayne State 4-0
Missouri Western 2-0
Nebraska-Omaha 2-0
Northeast Missouri State 3-0
Missouri Western 0-3, 0-2
William Penn 0-2, 7-2
Wartburg 10-2, 10-0 (5)
Luther 2-1, 9-3

IAIAW West

Sectionals (1st)

Grand View 13-1
Northwestern (IA) 14-2 (6)
10-0 (5)

Grand View 5-1, 6-0
Loras 8-4, 14-2 (6)

IAIAW State

Tournament (3rd)

St. Ambrose 4-1 (8)
William Penn 0-2
St. Ambrose 1-2 (10)

IAIAW Region 6

Championships (1st)

Minnesota-Duluth 2-0
Northwest Missouri State 4-0
Augustana (SD) 3-0
St. Ambrose 13-1

IAIAW II Women's College

World Series (1st)

Eastern Illinois 1-0
Northern Arizona 6-2
Southern Illinois-
Edwardsville 1-0, 5-0

Head Coach: Meredith Bakley

1983 (31-15)

Central State (OK)

Invitational (2nd)

West Texas State 4-1
Wichita State 5-1
South Dakota State 8-1
Central State 6-1
Northwest Louisiana 2-1
Texas Wesleyan 1-2
Oklahoma Baptist 2-0, 3-9
Oklahoma State 0-8, 1-8
Missouri 3-9
Wyoming 9-4
Oklahoma City 9-1, 8-0
Wartburg 10-1, 4-3
Iowa 1-2 (10)
St. Ambrose 3-1, 7-6
Minnesota 3-2, 3-5
William Penn 7-1, 6-0
Iowa State 2-3, 2-0

Missouri Western Invite

Washburn 4-0
Kearney State 2-3 (8)
Oklahoma Baptist 1-0 (9)
Nebraska-Omaha 2-5
Iowa 2-0, 3-1
Drake 1-0, 2-1
Illinois St. Invite (1st)
Southern Illinois 3-0
Western Illinois 2-1
Kent State 6-2
Indiana State 7-1
Central Michigan 3-1
Grand View 2-3, 5-1
Loras 1-0, 9-8
Minnesota 0-5, 0-4

Gateway Conference

Indiana State 2-3 (10)
Wichita State 0-1 (9)

Head Coach: Meredith Bakley

1984 (23-22-1)

Central State (OK)

Invitational

Texas Wesleyan 3-2
Central State 2-5
Friends 1-0
Pittsburg State 5-2
Oklahoma Baptist 0-3
Arizona 0-1 (11)
Indiana 0-2
Oklahoma City 0-0 (26)
Pittsburg State Invite
Nebraska-Omaha 3-2
Missouri Southern 9-2
Texas Wesleyan 0-1
Wartburg 11-0, 3-4
*Illinois State 1-2 (13), 0-9
*Indiana State 1-0, 2-1
Iowa 8-7, 2-7
Mankato State 1-0, 4-0
*Western Illinois 0-2 (9), 2-4
*Bradley 2-9, 0-1
St. Ambrose 4-0, 2-0

Miller Medical

UNI Tourney (4th)

South Dakota 1-2
Northeast Missouri State 3-1
Missouri Western 1-3

Kearney State 4-3 (9)
St. Xavier 2-0
Iowa State 4-5, 5-0
*Eastern Illinois 4-2, 3-1
*Southern Illinois 2-1, 0-4
Iowa 1-7, 1-3
*SW Missouri State 1-0, 1-0
*Wichita State 0-1 (8), 5-2

Gateway Conference Tournament

Bradley 0-7
Eastern Illinois 0-5
Head Coach: Meredith Bakley

*Gateway Conference Games

1985 (24-30)

Sooner Invitational

Kansas 1-2
Arizona State 1-6
Central Michigan 1-2
Indiana 2-7, 1-2
Central Michigan 1-3
Missouri 0-3
Southern Illinois-
Edwardsville 0-1
Oklahoma 3-4
Oklahoma Baptist 3-1, 4-0
Wartburg 7-1, 5-0
Mt. Mercy 0-1, 18-1 (5)
Iowa 5-6, 4-1
Mankato State 7-0, 2-1
*Eastern Illinois 2-0, 2-1
*Southern Illinois 5-2, 0-7
*Drake 2-3 (9), 4-6
Creighton 0-6

Miller Medical-

UNI Tourney (3rd)

Michigan State 4-3
Creighton 0-2
Colorado State 2-0
Central Michigan 2-0
Drake 3-0
Nebraska-Omaha 6-3
Central Michigan 0-1 (8)
St. Ambrose 6-1, 4-3
Iowa State 0-5, 3-7
*Illinois State 1-0, 7-8
*Indiana State 4-10, 2-3 (8)
Grand View 4-12
*SW Missouri State 4-3, 2-9
*Wichita State 1-0, 2-0
Iowa 0-4, 2-1 (9)
*Western Illinois 1-4, 2-1
*Bradley 1-4, 1-3

Gateway Conference Tournament

Indiana State 2-3 (11)
Southern Illinois 2-3 (11)

Head Coach: Meredith Bakley

*Gateway Conference Games

1986 (20-29)

Sooner Invitational

Oklahoma State 1-5
Baylor 0-1 (9)

Creighton 0-1
Oklahoma City 1-3
Missouri 1-2
Oklahoma City 2-3 (8)
Missouri 3-2
Oklahoma City 1-2 (9)
*Illinois State 0-1, 2-1
Redbird Invitational
*Indiana State 0-1
College of St. Francis 10-0 (6)
Western Michigan 0-7
Drake 4-3 (11)
Illinois State 0-4
Mankato State 1-0, 2-1 (10)
*Wichita State 2-3
*SW Missouri State 2-1

Miller Medical-

UNI Tournament

*Wichita State 0-1
*Southwest Missouri 0-2
Creighton 0-1
Bowling Green (OH) 0-5
Illinois at Chicago 1-0
Nebraska-Omaha 2-3 (11)
St. Ambrose 5-0, 1-2
Mt. Mercy 2-1, 4-1
Iowa 4-2, 1-3
*Southern Illinois 0-1, 3-6
*Eastern Illinois 3-1 (14), 1-6
Iowa State 3-4, 0-7
*Drake 0-2, 4-0
Wartburg 9-3, 4-1
*Bradley 1-0, 1-4
*Western Illinois 5-3, 1-3
Gateway Conference Tournament

Drake 1-0
Illinois State 2-1
Indiana State 0-1
Southwest Missouri 1-2 (8)
Head Coach: Meredith Bakley

*Gateway Conference Games

1987 (29-23)

Sooner Invitational

Wichita State 2-1
New Mexico 0-4
Missouri 1-3
Iowa 7-2
Oklahoma 1-8 (8)
Oklahoma City 1-0 (9)
Creighton 0-1 (8)
North Texas State 8-4, 6-4

Redbird Invitational

#Illinois Central 3-0
Ball State 3-2
Southern Illinois 0-3
Bradley 0-3
Mankato State 3-1, 2-0
*S. Illinois 2-5 (10), 6-1
*Eastern Illinois 0-5, 1-2
*Wichita State 0-1, 0-4
*SW Missouri State 0-4, 1-2
UNI-Dome Invitational
St. Cloud State 1-0
Nebraska-Omaha 2-0
North Dakota State 3-2 (9)



Northern Iowa Softball

Kearney State 5-0
Illinois at Chicago 2-0
North Dakota 7-9 (8)
St. Ambrose 1-0, 3-4
Luther 2-1, 6-3
*Indiana State 3-0, 2-1
*Illinois State 0-3, 0-3
Wartburg 1-0 (8), 8-0 (6)
*Bradley 3-1, 1-3 (11)
*W. Illinois 1-9 (5), 12-4 (5)
*Drake 8-0 (5), 16-1 (5)
Grand View 2-1, 3-0
Iowa 0-3, 0-1 (8)

Gateway Conference Tournament

Indiana State 1-0
Eastern Illinois 1-2
Wichita State 1-0
Illinois State 0-5
**Head Coach: Meredith
Bakley**

#Exhibition

*Gateway Conference Games

1988 (35-25)

Sooner Invitational

Missouri 1-2
Texas-Arlington 0-11
Baylor 2-1 (8)
Creighton 4-5 (10)
Oklahoma 10-2
Wichita State 3-1
New Mexico 2-1
Illinois State 0-9 (5)
North Texas State 9-1
Texas-Arlington 3-0
Baylor 1-0
Sam Houston State 3-5, 0-3
Stephen F. Austin 1-0, 0-3
Wartburg 6-0, 7-0 (5)

Creighton Invitational

Minnesota 5-4 (11)
Creighton 2-3 (10)
Minnesota 0-1
Creighton 1-8 (6)
Mankato State 1-0 (8), 4-1
Iowa State 1-2, 3-5

UNI-Dome Classic

Illinois at Chicago 7-1
Northern Illinois 0-2
Drake 8-0 (6)
Wisconsin-Green Bay 8-0 (6)
Missouri 3-2
Wisconsin-Green Bay 3-0
Augustana 4-0
Missouri Western 3-0
*Western Illinois 1-2, 3-0
*Bradley 9-6, 2-0
*Drake 5-0, 2-0
*Eastern Illinois 4-5, 0-2
*Southern Illinois 2-3, 2-4
*Illinois State 0-2, 2-10
*Indiana State 2-0, 1-0
Iowa 1-3 (8), 3-9
*SW Missouri 2-1, 10-2 (5)
*Wichita State 4-1, 5-1

Gateway Conference Tournament

Southern Illinois 5-4
Illinois State 1-4
Drake 2-1
Southwest Missouri 4-7
**Head Coach: Meredith
Bakley**

*Gateway Conference Games

1989 (34-26)

Sooner Invitational

Oklahoma State 0-9
Iowa 1-9
Sam Houston State 0-4
Wichita State 4-0
Texas-Arlington 2-3

Pittsburg State Invite

Benedictine 23-0
Missouri Western 7-3
Pittsburg State 3-0
Baker 11-0
Lincoln 3-1
Northeastern 0-5
Wichita State 0-2
Indiana State 0-3
Houston Baptist 8-1
Stephen F. Austin 0-1, 0-1 (8)
Iowa 5-6, 1-2 (9)
Wartburg 3-2, 15-1
Mankato State 1-0, 2-4 (10)
Iowa State 0-3, 0-6
*Illinois State 1-2, 0-3
*Indiana State 0-4, 2-4
Winona State 9-2, 4-1

UNI-Dome Classic

Drake 3-1
Wisconsin-Green Bay 3-1
Oklahoma City 5-2
DePaul 2-4
Loyola 7-0
St. Cloud State 2-4
*Western Illinois 0-2, 3-1

Windy City Classic

Drake 6-0
Wisconsin-Green Bay 2-1
Loyola 4-0
DePaul 6-2
Notre Dame 2-0
*Drake 4-3, 5-2
*Eastern Illinois 9-0, 5-1
*Southern Illinois 2-1, 3-4
*Bradley 1-5, 4-1
*Southwest Missouri 1-0, 3-2
*Wichita State 1-2, 5-0

Gateway Conference Tournament

Wichita State 0-5
Southwest Missouri 6-0
Bradley 3-2
Illinois State 13-6
Western Illinois 2-5

Head Coach: Meredith Bakley

*Gateway Conference Games

1990 (29-30)

Illinois State 2-3
Florida A&M 5-4 (8)
Georgia State 2-3 (10)
Indiana 1-0 (10)
Missouri 1-6
Samford 8-2
Missouri 0-6
Princeton 3-1, 8-0
Florida State 1-0, 2-4
Southern Illinois Invite
Southern Illinois 6-4
Northeast Louisiana 3-2
Wartburg 4-1, 3-1
Eastern Michigan 5-13
Northern Illinois 2-3
Illinois State 4-9, 6-5
DePaul 2-5
Creighton 0-6
Mankato State 2-1, 0-2
Iowa State 5-4, 6-5
*Southern Illinois 7-8, 0-5,
*Eastern Illinois 2-4, 3-6
Adelphi 0-2, 5-4

UNI-Dome Tournament

St. Xavier 5-4
Metropolitan State 5-2
Wisconsin-Green Bay 5-2
Drake 0-1 (8)
Illinois at Chicago 3-2 (8)
North Dakota 17-3
Augustana 2-0
Saginaw Valley 0-2
*Illinois State 2-3, 1-3
*Drake 1-2, 1-7,
*Wichita State 4-5, 3-4,
*Southwest Missouri 9-1, 1-2
Minnesota 3-0, 1-9
*Bradley 2-1 (10), 3-4 (16)
*Western Illinois 2-1, 1-10

Gateway Conference Tournament

Wichita State 6-0
Illinois State 6-5
Drake 2-0
Southern Illinois 2-0
Western Illinois 3-2

NCAA

Tournament

UCLA 0-2, 0-4

Head Coach: Meredith Bakley

*Gateway Conference Games

1991 (24-40)

Missouri 2-7
Minnesota-Duluth 2-0
Concordia 9-8
Minnesota 1-2
Indiana 1-8
Creighton 1-6
Florida A&M 3-0
DePaul 5-4
Furman 0-1
Miami of Ohio 4-6, 1-8
Florida A&M 6-4 (9), 1-5

Florida State 1-3, 1-2 (8)
Ball State 7-3
Bradley 4-9
Southern Illinois 7-11
Wartburg 1-3, 6-0
Drake 0-6
Missouri 0-3
Wisconsin-Green Bay 4-3 (9)
DePaul 0-2
Minnesota 1-5
Mankato State 4-2, 6-0
*Indiana State 7-0, 2-7
*Illinois State 3-9, 3-5
*Wichita State 2-3 (10), 2-5
*SW Missouri State 0-2, 4-0
Saginaw Valley State 5-4 (9)
Bradley 10-2
St. Xavier 0-4
Washburn 4-0
Valparaiso 5-1
Northeast Missouri State 9-3
Saginaw Valley State 6-1
Washburn 4-2
Augustana (SD) 0-1
Iowa State 3-5, 1-5
*Southern Illinois 0-10, 0-5
*Eastern Illinois 4-1, 0-4
Luther 0-1, 6-8
*Drake 7-4, 10-0
Drake 7-0
Creighton 2-5
Nebraska-Omaha 0-3, 0-4
Drake 0-4 (8)
*Bradley 0-1
*Western Illinois 3-1, 3-7

Gateway Conference Tournament

Drake 2-4
SW Missouri State 2-4
**Head Coach: Meredith
Bakley**

*Gateway Conference Games

Drake 7-0
Creighton 2-5
Nebraska-Omaha 0-3, 0-4
Drake 0-4 (8)
*Bradley 0-1
*Western Illinois 3-1, 3-7

Gateway Conference Tournament

Drake 2-4
SW Missouri State 2-4

Head Coach: Meredith Bakley

*Gateway Conference Games

1992 (29-24-1)

St. Louis 4-5, 21-4
Missouri-St. Louis 9-1, 3-5
Austin Peay 6-0, 13-1
Mercer 8-0, 10-1
Florida A&M 9-1, 3-0
Florida State 0-2
Florida State Invitational
Kent State 3-2
South Florida 3-2
Georgia State 5-3
Furman 7-5
Rutgers 7-5
Kent State 1-7
Wartburg 9-2, 12-5
*Eastern Illinois 0-1, 9-19
*Southern Illinois 3-5, 1-3
UNI-Dome Invitational
Saginaw Valley 3-5
Valparaiso 8-1
Wisconsin-Green Bay 7-1
Loyola 6-4
Illinois at Chicago 0-7

Northern Iowa Softball



Loyola 6-4
 Illinois at Chicago 0-7
 St. Cloud State 6-4
 St. Xavier 3-7
 Wisconsin-Green Bay 1-12, 10-3
 Mankato State 3-0
 *SW Missouri St. 1-2, 4-5 (9)
 *Wichita State 6-9, 0-3
 Iowa State 4-0, 1-3
 *Illinois State 0-2, 4-4
 Luther 2-1, 7-0
 *Western Illinois 1-0, 3-4
 *Bradley 3-1, 2-0
 Nebraska 2-5, 3-4
 *Drake 2-3 (11), 5-2
Gateway Conference Tournament
 Southern Illinois 3-1
 SW Missouri State 3-4
 Southern Illinois 3-13
Head Coach: Meredith Bakley
 *Gateway Conference Games

1993 (25-19)
 Rutgers 2-4
 Florida State 0-7
 Adelphi 4-0
 Toledo 6-2
 Mankato State (10) 3-2, 7-0
 Nebraska 5-6, 9-10
 Iowa State 8-1, 7-1
Florida State Invitational
 Kent State 6-1
 Connecticut 0-7
 Furman 0-11
 Northeast Louisiana (9) 4-3
 Rider 7-2
Southern Illinois Invite
 Southeast Missouri State 4-3
 Evansville 5-0
 Ball State 4-3
 Tennessee Tech 2-4
UNI-Dome Invitational
 St. Xavier 2-0
 Illinois at Chicago 2-6
 Saginaw Valley State 9-1
 Loyola 10-3
 Valparaiso 10-1
 St. Louis 5-8
 *Tulsa 5-0, 7-0
 *SW Missouri State 1-0, 3-5
 *Illinois State 2-4, 3-7
 *Bradley 9-1, 7-6
 *Wichita State 8-9, 4-8 (8)
 *Creighton 1-4, 1-3
 *Drake 4-3, 0-1
 *Indiana State 9-2, 4-0
Missouri Valley Conference Tourney
 Creighton 2-5
 Tulsa 2-1
 Southern Illinois 0-6
Head Coach: Meredith Bakley
 *Missouri Valley Conference Games

1994 (40-21)
 St. Louis 9-0, 11-0
 McKendree 8-0, 12-2
 Florida A&M 6-2
 Eastern Illinois 1-2, 11-3
 Monmouth 4-0
 Central Connecticut 7-2
 West Florida 1-6
 Southern Illinois 1-2
 Southeast Missouri 2-7
 Tennessee Tech 3-0
 Wartburg 8-0, 1-0
 Wisconsin-Green Bay 10-0
 Western Illinois 8-3
 Missouri-Kansas City 9-2
 Creighton 5-3
 DePaul 1-3
 Nebraska 0-8, 7-0
 Mankato State 3-1, 1-0
 Iowa State 3-0, 6-5
UNI-Dome Invitational
 St. Xavier 4-0, 2-0
 Wisconsin-Green Bay 4-0
 Northeast Illinois 5-0
 Loyola of Chicago 2-1
 Illinois at Chicago 4-3 (8)
 Wisconsin-Parkside 9-6
 Augustana (SD) 1-9
Missouri Invitational
 Missouri 2-7, 5-3
 Notre Dame 4-6, 0-7
Florida State Invitational
 Illinois at Chicago 5-3
 Miami (OH) 6-3
 Massachusetts 4-1
 Georgia State (8) 0-1
 Western Illinois 1-7
 Florida A&M 10-2
 *Southern Illinois 2-1, 5-2
 *Indiana State 2-3, 8-9
 *Wichita State 2-0, 3-10
 *Creighton 0-2, 13-7
 *Drake 2-0, 8-1
 *Tulsa 5-1, 1-3
 *Illinois State 0-6, 1-10
Missouri Valley Conference Tourney
 Illinois State 3-2
 Drake 4-5
 Southwest Missouri State 1-4
Head Coach: Meredith Bakley
 *Missouri Valley Conference Games

1995 (24-32)
 Florida A & M 10-4, 8-0
 Shawnee State 2-0, 9-4
 Central Connecticut 6-1, 8-0
 Wartburg 9-0, 8-6
 Iowa State 0-6, 0-3
 Mankato State 1-0, 2-1
Missouri Invitational
 Indiana State 0-3
 Missouri 0-1 (8)
 Purdue 1-2 (8)
 Indiana State 7-6

Florida State Invitational
 Massachusetts 4-9
 Illinois-Chicago 0-7
 Indiana 3-2
 Eastern Illinois 0-4
 Furman 0-3 (8)
Southern Illinois Invite
 Tennessee Tech 7-3
 Evansville 7-4
 Southern Illinois 8-7
 Eastern Illinois 4-3
 Southeast Missouri 1-5
Western Illinois Invite
 Indiana State 2-3 (9)
 Western Illinois 1-7
 Indiana State 2-5
 Western Illinois 3-1
UNI-Dome Invitational
 Drake 1-8
 Wisconsin-Parkside 7-3
 Augustana-S. Dakota 2-4
 Nebraska 1-3
 St. Cloud State 2-1 (8)
 Mankato State 3-5 (9)
 *Indiana State 7-3, 3-4
 *Bradley 8-2, 4-3
 *Illinois State 0-5, 2-3 (8)
 *Wichita State 2-6, 0-2
 *Creighton 5-4, 3-9
 *Tulsa 3-10, 1-10
 *SW Missouri State 1-6, 3-4
 *Drake 0-5, 6-5
 *Southern Illinois 0-7, 1-6
 *Evansville 1-2, 4-6
Head Coach: Meredith Bakley
 *Missouri Valley Conference Games

1996 (34-22)
 St. Louis Univ. 6-0, 21-4 (5)
 Florida A&M 12-1 (6), 10-1 (5)
 Coe College 8-0, 11-0 (5)
 Nebraska 7-8, 3-7
 Mankato State 5-6, 4-5
 Minnesota 4-2
 Iowa State 9-1 (6), 7-6
Missouri Invitational
 Indiana State 9-1
 Missouri 7-5, 2-4
 St. Louis Univ. 4-0
SW Missouri Invitational
 Drake 2-3 (8)
 SW Missouri State 2-12 (5)
 Kansas 3-2
Florida State Invitational
 Samford 7-1
 Georgia State 1-3 (9)
 Michigan 0-13 (5)
 Miami (Ohio) 3-5
 Illinois-Chicago 6-2
Pensacola, Florida
 Central Connecticut 10-0 (6), 7-1
 Kentucky Wesleyan 1-0
 Missouri Southern 0-2
Southern Illinois Invite
 St. Louis Univ. 9-1
 Southern Illinois 3-0

Evansville 2-0
 Loyola-Chicago 2-1
 *Indiana State 8-0 (5), 3-0
 *Illinois State 0-8 (5), 0-8 (5)
 *Bradley 0-1, 5-4
 *Wichita State 3-2 (8), 4-5
 *Creighton 3-0, 4-3 (9)
 *S. Illinois 7-2, 3-4 (12)
 *Evansville 6-3, 5-0
 *Tulsa 0-6, 4-3
 *SW Missouri 4-5 (10), 5-11
 *Drake 0-6, 4-3
Missouri Valley Conference Tourney
 Southern Illinois 0-2
 Tulsa 7-3
 Bradley 0-1
Head Coach: Meredith Bakley
 *Missouri Valley Conference Games

Northern Iowa has shown it is a softball powerhouse in the State of Iowa. UNI holds a 173-71-1 record against in-state colleges including a 28-23-1 record versus Big 12 member Iowa State and a 20-16 record versus Big Ten power Iowa. The Panthers hold undefeated records with six of the 15 Iowa schools they have played, and have only one losing mark, which is a 6-9 record against Grand View.



Northern Iowa Softball

All Time Series Records

Team Record Last Meeting

Adelphi	2-1	1993
Arizona	2-2	1984
Arizona State	0-2	1985
Augustana (SD)	3-3	1995
Austin Peay	2-0	1992
Baker	1-0	1989
Ball State	3-0	1993
Baylor	2-2	1988
Benedictine	1-0	1989
Bowling Green	0-1	1986
Bradley	15-14	1996
Buena Vista	1-0	1974
Central College	3-0	1980
Central Connecticut	5-0	1996
Central Michigan	2-3	1985
Central State	1-1	1984
Clarke College	2-0	1980
Coe College	2-0	1996
Colorado State	2-0	1985
Concordia	1-0	1991
Connecticut	0-1	1993
Creighton	5-16	1996
DePaul	2-4	1994
Drake	33-21	1996
Eastern Illinois	11-14	1995
Eastern Michigan	0-1	1990
Ellsworth (Exhib.)	2-0	1981
Emporia State	0-1	1979
Evansville	5-2	1996
Florida A&M	11-1	1996
Florida State	1-5	1993
Friends	1-0	1984
Furman	1-3	1995
Georgia State	1-3	1996
Golden West State	1-1	1980
Graceland	6-1	1976
Grand View	6-9	1987
Hilo Comets	2-1	1980
Houston Baptist	1-0	1989
Ill. Central (Exhib.)	1-0	1987
Illinois at Chicago	7-22	1996
Illinois State	6-29-1	1996
Indiana	2-4	1995
Indiana State	17-16	1996
Iowa	20-16	1989
Iowa State	28-23-1	1996
Iowa Wesleyan	2-0	1979
Kansas	3-2	1996
Kansas State	0-1	1975
Kearney State	2-1	1987
Kent State	3-1	1993
Kentucky Wesleyan	1-0	1996
Lincoln	1-0	1989
Loras	12-3	1983
Loyola	6-0	1996
Luther	29-8	1992
McKendree	2-0	1994
Mankato State	22-5	1996
Massachusetts	1-1	1995
Mercer	2-0	1992
Metropolitan State	1-0	1990
Miami of Ohio	1-3	1996
Michigan	0-1	1996
Michigan State	4-0	1985
Minnesota	6-12	1996
Minnesota JV	0-1	1979
Minnesota-Duluth	2-0	1991
Missouri	4-12	1996
Missouri-Kansas City	1-0	1994
Missouri-St. Louis	1-1	1992
Missouri Southern	1-1	1996
Missouri Western	3-3	1989
Monmouth	1-0	1994

Team Record Last Meeting

Moorhead State	2-0	1981
Mt. Mercy	12-2	1986
Nebraska	1-10	1996
Nebraska-Omaha	9-6	1991
New Mexico	1-1	1988
North Dakota	1-1	1990
North Dakota State	2-0	1987
North Texas State	5-0	1988
Northeastern	0-1	1989
Northeast Illinois	1-0	1994
Northeast Louisiana	2-0	1993
NE Missouri St.	3-1	1991
Northern Arizona	1-0	1982
Northern Colorado	1-3	1980
Northern Illinois	0-2	1990
Northern State (SD)	1-0	1976
Northwestern College	3-0	1980
Northwest Louisiana	1-0	1983
NW Missouri St.	2-0	1982
Northwestern	2-0	1980
Northwestern (IA)	2-0	1982
Notre Dame	1-2	1994
Oklahoma	2-3	1988
Oklahoma Baptist	5-3	1985
Oklahoma City	7-4-1	1989
Oklahoma State	0-4	1989
Pittsburgh State	2-0	1989
Princeton	2-0	1990
Purdue	0-1	1995
Rider	1-0	1993
Rutgers	1-1	1993
Saginaw Valley	3-2	1993
St. Ambrose	15-4	1987
St. Cloud State	6-1	1995
St. Francis	1-0	1986
St. Louis	7-2	1996
St. Xavier	5-2	1994
Stephen F. Austin	1-3	1989
Sam Houston State	0-3	1989
Samford	2-0	1996
Shawnee State	2-0	1995
South Carolina	0-1	1981
South Dakota	3-1	1984
South Dakota State	1-0	1983
South Florida	1-0	1992
SE Missouri State	1-2	1995
SIU-Edwardsville	2-1	1985
Southern Illinois	16-25	1996
SW Missouri State	14-20	1996
Tarkio	1-0	1977
Tennessee Tech	2-1	1995
Texas	1-0	1976
Texas-Arlington	3-4	1989
Texas Wesleyan	1-2	1984
Texas Women's	0-5	1981
Toledo	1-0	1993
Tulsa	4-3	1995
UCLA	0-2	1990
Upper Iowa	5-0	1980
Utah State	1-1	1980
Valparaiso	3-0	1993
Waldorf JC (Exhib.)	2-0	1977
Wartburg	48-3	1995
Washburn	3-0	1991
Wayne State	2-1	1982
West Florida	0-1	1994
West Texas State	1-0	1983
Western Illinois	11-14	1995
Western Michigan	0-2	1986
Westmar	1-0	1980
Wichita State	15-21	1996
William Penn	15-3	1983
Winona State	2-0	1989
Wis.-Green Bay	10-1	1994
Wisconsin-Parkside	2-0	1995
Wyoming	2-0	1983

All-Time Record (since 1974) 626-436-3

Northern Iowa Softball



1997 Northern Iowa Schedule

			19	20	21	22
23	24	25	26	27	28	

February

Date	Team
22-23	at Missouri Invitational Columbia, Missouri 22: Indiana State (10 am), Missouri (4 pm) 23: Northeastern Illinois (9 am)

2	3	4	5	6	7	8
9	10	11	12	13	14	15
16	17	18	19	20	21	22
23	24	25	26	27	28	29
30						

March

Date	Team
8-9	at SW Missouri Invite Springfield, Missouri 8: Missouri-KC (9:30 am), Drake (11:30 am) 9: SW Missouri (9:30 am)
14-16	at Florida State Invite Tallahassee, Florida 14: Louisiana Tech (9 am), S. Florida (11 am) Furman (3 pm) 15: Michigan St. (9 am), Massachusetts (5 pm)
16	at Florida A&M
18	Univ. of Massachusetts at Tallahassee, Florida
19	Long Island Univ. at Tallahassee, Florida
21-22	at Southern Illinois Invite Carbondale, Illinois 21: SE Missouri (12 pm), Southern Ill. (2 pm) 22: St. Louis (12 pm)
28-29	at Western Illinois Invite Macomb, Illinois 28: Butler (11 am), Western Ill. (1 pm)

		1	2	3	4	5
6	7	8	9	10	11	12
13	14	15	16	17	18	19
20	21	22	23	24	25	26
27	28	29	30			

April

Date	Team	Time
1	at U. of Missouri-Kansas City	1 pm
3	Bradley	3 pm
4-6	UNI-Dome Invitational Cedar Falls, Iowa 4: St. Louis (1 pm), Valparaiso (2:30 pm) Bradley (5:30 pm)	
9	at Univ. of Minnesota	3 pm
12	SW Missouri State	12 noon
13	Wichita State	12 noon
16	Mankato State	3 pm
19	at Drake	12 noon
20	at Creighton	12 noon
23	Nebraska	2 pm
26	Indiana State	12 noon
27	Illinois State	12 noon
29	at Iowa State	3 pm

				1	2	3
4	5	6	7	8	9	10

May

Date	Team	Time
3	at Evansville	12 noon
4	at Southern Illinois	12 noon
8-10	Missouri Valley Conference Tournament Cedar Falls, Iowa	

Home games in bold
All single dates are doubleheaders



Northern Iowa Softball

1997 Northern Iowa Opponents



School: Bradley University
Location: Peoria, Illinois
Enrollment: 6,000
Conference: Missouri Valley
Nickname: Lady Braves
Athletic Colors: Red and White

President: Dr. John Brazil
Athletic Director: Ken Kavanagh
Phone: (309) 677-2670

SID: Joe Dalfonso
Phone: (309) 677-2624
Fax: (309) 677-2626
SB Contact: Joe Dalfonso
Phone: (309) 677-2624
Head Coach: Stefanie Jones
Phone: (309) 677-2692
Asst. Coach(es): Angie LeMonnier

1996 Overall Record: 20-32



School: Creighton University
Location: Omaha, Nebraska
Enrollment: 6,152
Conference: Missouri Valley
Nickname: Lady Jays
Athletic Colors: Blue and White

President: Rev. Michael Morrison
Athletic Director: Bruce Rasmussen
Phone: (402) 280-2720

SID: Bobby Parker
Phone: (402) 280-2488
Fax: (402) 280-2495
SB Contact: Andy Nemann
Phone: (402) 280-5544
Head Coach: Brent Vigness
Phone: (402) 280-2949
Asst. Coach(es): Marie Curran

1996 Overall Record: 17-24



School: Drake University
Location: Des Moines, Iowa
Enrollment: 3,200
Conference: Missouri Valley
Nickname: Bulldogs
Athletic Colors: Blue and White

President: Dr. Michael Ferrari
Athletic Director: Lynn King
Phone: (515) 271-2889

SID: Mike Mahon
Phone: (515) 271-3012
Fax: (515) 271-3015
SB Contact: Jason Eslinger
Phone: (515) 271-3740
Head Coach: Megan Bryant
Phone: (515) 271-2046
Asst. Coach(es): Brenda Vigness
Kerri Przybyski
1996 Overall Record: 31-12



School: Evansville University
Location: Evansville, Indiana
Enrollment: 2,600
Conference: Missouri Valley
Nickname: Aces
Athletic Colors: Purple and White

President: James Vinson
Athletic Director: James Byers
Phone: (812) 479-2238

SID: Bob Boxell
Phone: (812) 479-2350
Fax: (812) 479-2199
SB Contact: Bob Boxell
Phone: (812) 479-2350
Head Coach: Gwen Lewis
Phone: (812) 479-2620
Asst. Coach(es): Peg Boardman

1996 Overall Record: 22-28



School: Florida A&M University
Location: Tallahassee, Florida
Enrollment: 10,395
Conference: Mid-Eastern Athletic
Nickname: Rattlerettes
Athletic Colors: Orange and Green

President: Dr. Frederick Humphries
Athletic Director: Kenneth Riley
Phone: (904) 599-3868

SID: Michelle Jinks, Women's Sports
Phone: (904) 599-3200
Fax: (904) 599-3206
SB Contact: Arthur Hightower
Phone: (904) 599-3200
Head Coach: Veronica Wiggins
Phone: (904) 599-3239
Asst. Coach(es): Tonya Knight
Pam McQuinton
1996 Overall Record: 33-34



School: Illinois State University
Location: Normal, Illinois
Enrollment: 19,409
Conference: Missouri Valley
Nickname: Redbirds
Athletic Colors: Red and White

President: Dr. David Strand
Athletic Director: Rick Greenspan
Phone: (309) 438-3636

SID: Kenny Mossman
Phone: (309) 438-3825
Fax: (309) 438-5634
SB Contact: Scott Wherley
Phone: (309) 438-3249
Head Coach: Melinda Fischer
Phone: (309) 438-5807
Asst. Coach(es): Mary Jo Fimbach
Bill Kennedy
1996 Overall Record: 35-19

Northern Iowa Softball



School: Indiana State University
Location: Terre Haute, Indiana
Enrollment: 11,641
Conference: Missouri Valley
Nickname: Sycamores
Athletic Colors: Blue and White

President: Dr. John Moore
Athletic Director: Larry Gallo
Phone: (812) 237-4040

SID: Chris Burkhalter
Phone: (812) 237-4160
Fax: (812) 237-4157
SB Contact: Rob Ervin
Phone: (812) 237-4160
Head Coach: Linda Derk
Phone: (812) 237-4166
Asst. Coach(es): Hope Favreau

1996 Overall Record: 13-37



School: Iowa State University
Location: Ames, Iowa
Enrollment: 24,500
Conference: Big 12
Nickname: Cyclones
Athletic Colors: Cardinal and Gold

President: Dr. Martin C. Jischke
Athletic Director: Gene Smith
Phone: (515) 294-0123

SID: Tom Kroeschell
Phone: (515) 294-3372
Fax: (515) 294-0558

SB Contact: Katie Bartling
Phone: (515) 294-3372
Head Coach: Ruth Crowe
Phone: (515) 294-3426
Asst. Coach(es): Cara Coughenour

1996 Overall Record: 17-28



School: Long Island University
Location: Brooklyn, New York
Enrollment: 9,500
Conference: Northeast Conference
Nickname: Blackbirds
Athletic Colors: Blue and White

President: Dr. David Steinberg
Athletic Director: Alan Chaves
Phone: (718) 488-1292

SID: Greg Fox
Phone: (718) 488-1420
Fax: (718) 780-4046
SB Contact: Steven Torres
Phone: (718) 488-1420
Head Coach: Roy Kortmann
Phone: (718) 488-1523
Asst. Coach(es): William Gehrke
 Christine Dragula
1996 Overall Record: 20-22



School: Mankato State University
Location: Mankato, Minnesota
Enrollment: 12,450
Conference: North Central
Nickname: Mavericks
Athletic Colors: Purple and Gold

President: Dr. Richard Rush
Athletic Director: Georgene Brock
Phone: (507) 389-1795

SID: Paul Allen
Phone: (507) 389-2625
Fax: (507) 389-1923
SB Contact: Paul Allen
Phone: (507) 389-2625
Head Coach: Lori Meyer
Phone: (507) 389-2689
Asst. Coach(es): Jenni Leis

1996 Overall Record: 36-19



School: University of Nebraska
Location: Lincoln, Nebraska
Enrollment: 25,000
Conference: Big 12
Nickname: Cornhuskers
Athletic Colors: Scarlet and Cream

President: Dr. James Moeser
Athletic Director: Bill Byrne
Phone: (402) 472-3011

SID: Chris Anderson
Phone: (402) 472-2263
Fax: (402) 472-2005
SB Contact: Jeff Abele/Keith Mann
Phone: (402) 472-2263
Head Coach: Rhonda Revelle
Phone: (402) 472-6465
Asst. Coach(es): Lori Sippel
 Misti Guenther
1996 Overall Record: 42-23



School: Southern Illinois University
Location: Carbondale, Illinois
Enrollment: 22,400
Conference: Missouri Valley
Nickname: Salukis
Athletic Colors: Maroon and White

President: Dr. Donald Beggs
Athletic Director: Jim Hart
Phone: (618) 453-7250

SID: Gene Green
Phone: (618) 453-5470
Fax: (618) 536-2152
SB Contact: Bryan McGowan
Phone: (618) 453-5465
Head Coach: Kay Brechtelsbauer
Phone: (618) 453-5466
Asst. Coach(es): Kerri Blaylock
 Mark Cosgrove
1996 Overall Record: 26-21



Northern Iowa Softball

1997 Northern Iowa Opponents, Cont.



School: Southwest Missouri State Univ.
Location: Springfield, Missouri
Enrollment: 17,570
Conference: Missouri Valley
Nickname: Lady Bears
Athletic Colors: Maroon and White

President: John Keiser
Athletic Director: Bill Rowe
Phone: (417) 836-5244

SID: Mark Stillwell
Phone: (417) 836-5402
Fax: (417) 836-4868
SB Contact: Jon Ripberger
Phone: (417) 836-5402
Head Coach: Holly Hesse
Phone: (417) 836-8384
Asst. Coach(es): Sue Frederick
Beth Perine
1996 Overall Record: 30-20



School: Univ. of Massachusetts
Location: Amherst, Massachusetts
Enrollment: 24,125
Conference: Atlantic 10
Nickname: Minutewomen
Athletic Colors: Maroon and White

President: William Bulger
Athletic Director: Bob Marcum
Phone: (413) 545-2342

SID: Bill Strickland
Phone: (413) 545-2439
Fax: (413) 545-1556
SB Contact: Kate Mulligan
Phone: (413) 545-2439
Head Coach: Elaine Sortino
Phone: (413) 545-0038
Asst. Coach(es): Shelly Fowler
Kathryn Gleason
1996 Overall Record: 38-15-1



School: University of Minnesota
Location: Minneapolis, Minnesota
Enrollment: 38,000
Conference: Big 10
Nickname: Golden Gophers
Athletic Colors: Maroon and Gold

President: Nils Hasselmo
Athletic Director: Chris Voelz
Phone: (612) 624-4044

SID: Lisa Nelson
Phone: (612) 624-3335
Fax: (612) 624-8018
SB Contact: Becky Bohm
Phone: (612) 624-1023
Head Coach: Lisa Bernstein-O'Brien
Phone: (612) 624-9024
Asst. Coach(es): Julie Standering
Jennifer McGuinness
1996 Overall Record: 44-18



School: Univ. of Missouri-Kansas City
Location: Kansas City, Missouri
Enrollment: 10,209
Conference: Mid-Continent
Nickname: Kangaroos
Athletic Colors: Blue and Gold

President: Dr. Eleanor Schwartz
Athletic Director: Lee Hunt
Phone: (816) 235-1039

SID: Chad Harberts
Phone: (816) 235-1034
Fax: (816) 235-1035
SB Contact: Geoff Hill
Phone: (816) 235-1034
Head Coach: Galen Struve
Phone: (816) 235-1036
Asst. Coach(es): Terry Snelling
1996 Overall Record: 5-31



School: Wichita State University
Location: Wichita, Kansas
Enrollment: 14,558
Conference: Missouri Valley
Nickname: Shockers
Athletic Colors: Black and Yellow

President: Dr. Eugene M. Hughes
Athletic Director: Bill Belknap
Phone: (316) 978-3250

SID: Larry Rankin
Phone: (316) 978-3265
Fax: (316) 978-3336
SB Contact: Ron Burnett
Phone: (316) 978-3265
Head Coach: Jim Maynard
Phone: (316) 978-3257
Asst. Coach(es): Steve Harshberger
Michelle Moores
1996 Overall Record: 31-31

Northern Iowa Softball



Northern Iowa Media Information

Press facilities are very limited at the UNI Softball Field. The field has no enclosed press box at this time. If you are covering a game, please prepare for inclement weather. There are few electrical outlets for use and there is no phone line. If you need to use the fax machine or a phone line after the second game of a doubleheader, please contact **Chad Guge, student assistant in charge of softball at the Media Relations Department (319) 273-6354 or at home (319) 273-3229** before the day of a game.

The UNI Softball Field is located behind the UNI-Dome and to the northwest. Free parking is available and there is no admission charge for games. If the weather does not allow for outdoor play, games may be moved into the UNI-Dome if it is available and the game time will be delayed by approximately one hour. Media may call the Media Relations/Sports Information office prior to the game in regards to this matter.

Head coach Meredith Bakley, assistant coach Gene Bruhn and any players are available for interviews on most occasions after the second game of a doubleheader. Interviews may be arranged with **head coach Meredith Bakley at (319) 273-2520**.

If media or any member of an opponent's sports information office are unable to attend a game, please call before the day of a game to request statistics and/or box scores of the game. These will be available approximately **one hour after the second game of a doubleheader**. Box scores and team statistics are available on the Info Connection number listed on this page. Box scores will be faxed to all local media outlets and to opposing team's sports information offices after the second game of a doubleheader.

UNI Softball Media Outlets

Media Outlet

Waterloo Courier
Des Moines Register
Cedar Rapids Gazette
Northern Iowan
KWWL-TV
KCRG-TV
KGAN-TV
KCNZ
KXEL
KWLO
WMT

Phone

(319) 291-1466
1-800-532-1455
(319) 398-8257
(319) 273-2157
(319) 291-1290
(319) 398-8391
(319) 395-9081
(319) 277-1918
(319) 234-6397
(319) 234-2200
(319) 235-7774

UNI Intercollegiate Athletic Staff Directory (Area Code for all numbers is 319)

Administration

Chris Ritrievi	273-2470
Sandra Williamson	273-6033
Jersey Jermier	273-3097
Julie Bright	273-2475

Media Relations

Nancy Justis	273-6354
Kevin Kane	273-3642

Marketing/Promotions

Ann Brett Gillespie	273-6944
---------------------	----------

Academic Advising

Bob Kincaid	273-6321
-------------	----------

Sports Medicine

Terry Noonan	273-6369
Nancy Bowers	273-6476

Equipment

Steve Nurse	273-2459
Dennis Anderson	273-2459

Other Frequently Called Numbers

Admissions	273-2281
Registrar	273-2241
Financial Aid	273-2700
Public Safety	273-2712
Public Relations	273-2761
Alumni	273-2355
Camps	273-2267
Dome Floor	273-7194
East Gym	273-2654
West Gym	273-2141
Physical Educ. Center	273-6275

Info Connection Fax-On-Demand

To Access, call: (770) 399-3066
Missouri Valley Conference Passcode: 682
Softball Notes/Results/Stats Request: #1795
Box Score from Home Game Request: #1796



Northern Iowa Softball

1997 Northern Iowa Softball Team



Front row, l-r: Nicole Saathoff, Jackie Watt, Heidi Fromherz, Jen Dean, Maggie Sellers, Shelby Worms. **Second row, l-r:** Heather Blair, Kylie Sloan, Deanne Fick, Mickey Shenk, Amber Sampson, Kristen Dalrymple, Melissa Navntoft. **Third row, l-r:** Jeannine Soncini, Jody Dean. **Fourth row, l-r:** Amy Engle, Angie Schreurs. **Back row:** Jackie Paulus.

1997 Northern Iowa Schedule

February

23-24 at Missouri Invitational
Columbia, Missouri

March

8-9 at Southwest Missouri Invitational
Springfield, Missouri
14-16 at Florida State Invitational
Tallahassee, Florida
16 at Florida A&M
Tallahassee, Florida
18 University of Massachusetts
at Tallahassee, Florida
19 Long Island University
at Tallahassee, Florida
21-22 at Southern Illinois Invitational
Carbondale, Illinois
28-29 at Western Illinois Invitational
Macomb, Illinois

April

1 at U. of Missouri-Kansas City 1 pm
3 *Bradley 3 pm
4-6 UNI-Dome Invitational
Cedar Falls, Iowa
9 at University of Minnesota 3 pm
12 *SW Missouri State 1 pm
13 *Wichita State 1 pm
16 Mankato State 3 pm
19 *at Drake 1 pm
20 *at Creighton 1 pm
23 Nebraska 2 pm
26 *Indiana State 1 pm
27 *Illinois State 1 pm
29 at Iowa State 3 pm

May

3 *at Evansville 1 pm
4 *at Southern Illinois 1 pm
8-10 Missouri Valley Conference
Tournament
Cedar Falls, Iowa

Home games in bold

* denotes Missouri Valley Conference game

All single dates are doubleheaders