

1997

1996-97 Women's Basketball Media Guide

University of Northern Iowa

Let us know how access to this document benefits you

Copyright ©1996 Athletics, University of Northern Iowa

Follow this and additional works at: <https://scholarworks.uni.edu/amg>



Part of the [Higher Education Commons](#)

Recommended Citation

University of Northern Iowa, "1996-97 Women's Basketball Media Guide" (1997). *Athletics Media Guides*. 224.

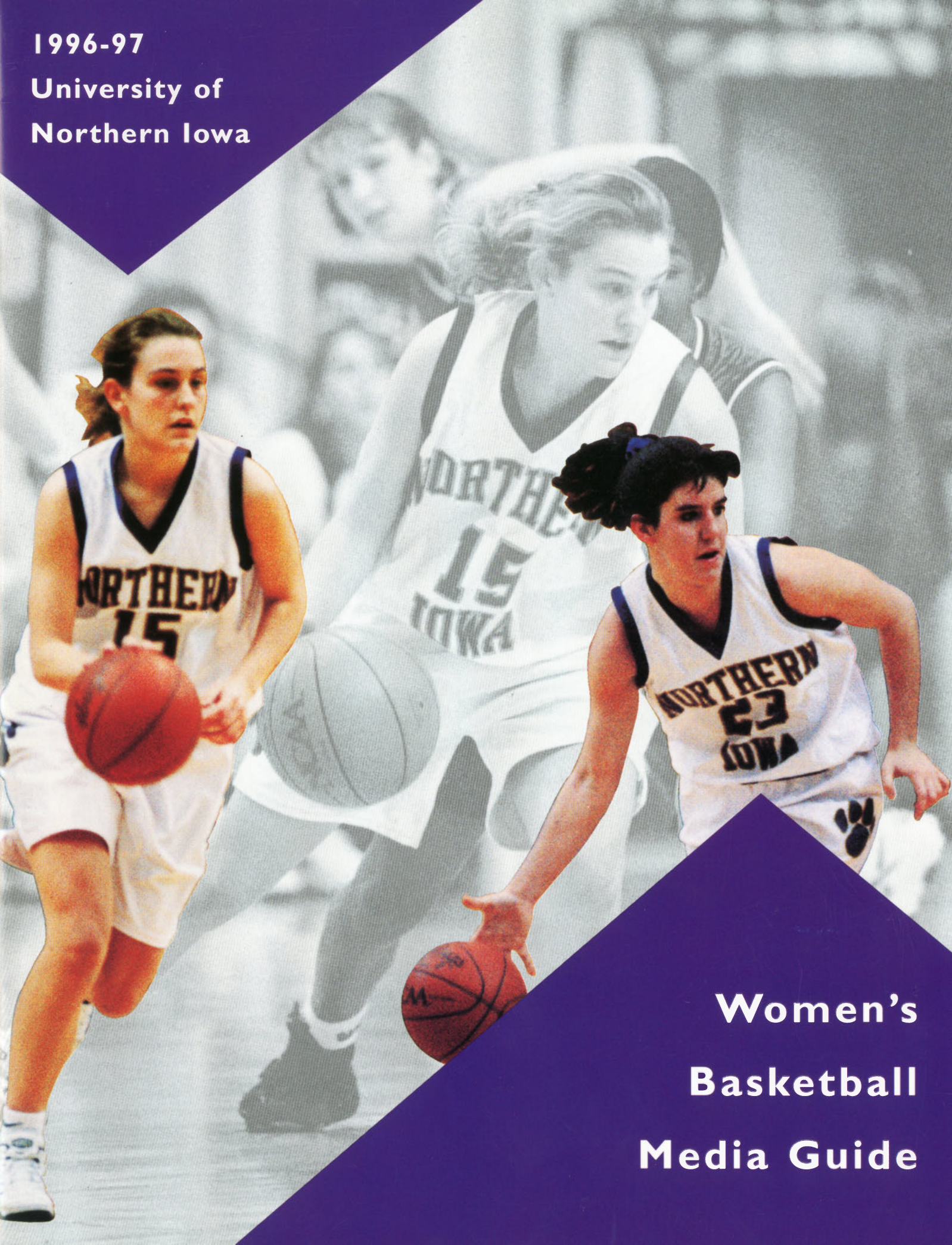
<https://scholarworks.uni.edu/amg/224>

This Book is brought to you for free and open access by the Athletics at UNI ScholarWorks. It has been accepted for inclusion in Athletics Media Guides by an authorized administrator of UNI ScholarWorks. For more information, please contact scholarworks@uni.edu.

Offensive Materials Statement: Materials located in UNI ScholarWorks come from a broad range of sources and time periods. Some of these materials may contain offensive stereotypes, ideas, visuals, or language.

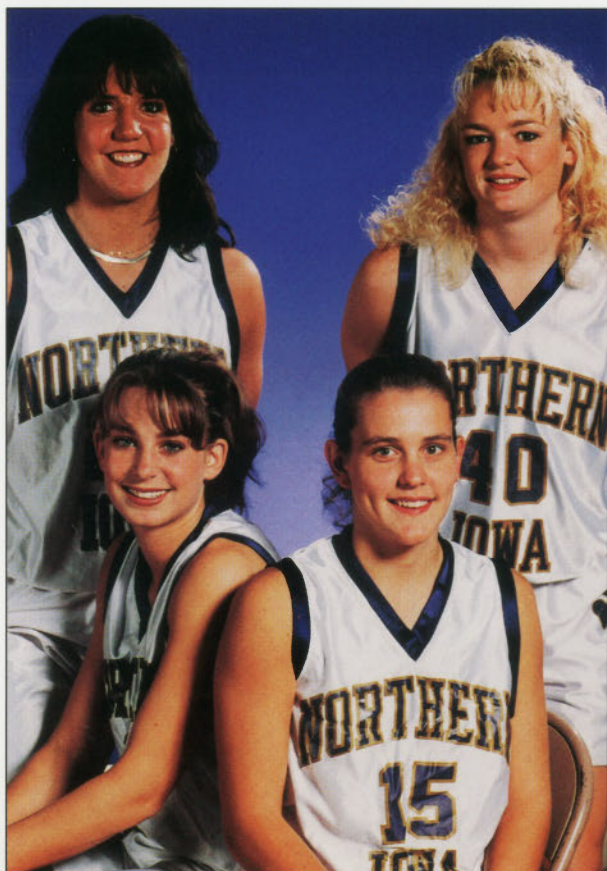
1996-97

**University of
Northern Iowa**



**Women's
Basketball
Media Guide**

1995-96 Northern Iowa Superlatives



Sitting (l-r): Karen Fenske, Kelley Westhoff;
Standing: Kate Lawler, Jen Steffens



1996 Academic All-Conference Honorable Mention

- Set UNI record with six conference wins
- Reached MVC Tournament for second time in school history
- Won five of last eight regular season contests

Team records set in 1995-96:

- Three-point field goals made, season (121)
- Three-point field goals attempted, season (403)
- Free throws made, season (461)
- Free throws attempted, season (667)
- Three-point field goals attempted, game (30 vs. Minnesota, 12/15/95)

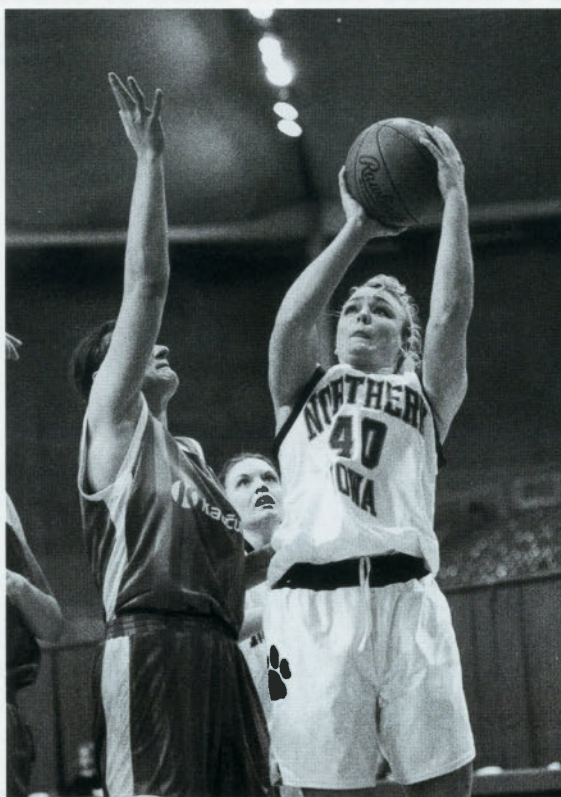
Individual records set in 1995-96:

- Assists, game (13, Kelley Westhoff vs. Bradley, 2/24/96)
- Assists, season (155, Kelley Westhoff)

1996-97 Northern Iowa Women's Basketball

Table of Contents

1995-96 Superlatives	IFC
Quick Facts, Table of Contents	1
Media Information	2
Season Outlook	3-4
Coaching Staff	
Head coach Tony DiCecco	6
Assistant coaches	7
1996-97 Roster	8
Player Profiles	
Karen Fenske	10
Kate Lawler	11
Heidi Munz	12
Kelley Westhoff	13
Jessica Johnson	14
Shannan Kadner	15
Adrienne Miskell	16
Jen Steffens	17
Erin Fox	18
Mary Koch	19
Kate Hanneman/Ky Petersen	20
Jill Seidl/Allison Starr	21
Angella Welch/Support Staff	22
1995-96 Stats/Results	23
1995-96 High-Low Analysis	24
Missouri Valley Conference	25
1995-96 MVC Standings	26
This is UNI	
The University of Northern Iowa	28
Facilities	29
Administration	30-31
Cedar Falls	32
1996-97 Opponents	34-39
MVC Composite Schedule	40
Basketball History	
Record Book	42
Career Leaders	43
Season-by-Season Results	44-45
All-Time Records vs. Opponents	46
All-Time UNI Roster	47
Radio/Television Roster	48
Postcards from the Panthers	IBC
1996-97 Schedule	OBC



Junior **Jen Steffens** returns for the Panthers after averaging 9.4 points and 5.6 rebounds last season.

UNI Quick Facts

University Facts:

Location: Cedar Falls, Iowa 50614-0314
Enrollment: 13,000
Founded: 1876
Nickname: Panthers
Colors: Purple and Old Gold
Affiliation: NCAA Division I
Conference: Missouri Valley
Arena (capacity): UNI-Dome (10,000)
President: Dr. Robert Koob
Faculty Chairman of Athletics: Dr. Jack Wilkinson
Director of Athletics: Chris Ritrievi
Associate Athletic Directors: Dr. Sandra Williamson, John "Jersey" Jermier

Women's Basketball Facts:

Head Coach: Tony DiCecco (Upper Iowa, 1971)
Record at UNI: 7-20 (one year)
Overall record: same
Office: (319) 273-6443
Assistant Coaches: Colleen Heimstead, Tanya Warren, Jenny Nelson
1995-96 record: 7-20
1995-96 MVC record (finish): 6-12 (8th)
Letterwinners returning/lost: 10/2
Starters returning/lost: 5/0

On the cover: Panther co-captains **Kate Lawler (23)** and **Kelley Westhoff (15)** look to lead UNI in 1996-97.

Credits

The 1996-97 Northern Iowa Women's Basketball Media Guide was designed, written and typeset by Dave Moll - Athletic Media Relations Intern, with editorial assistance from Nancy Justis. Photography by Jeff Martin, UNI Office of Public Relations.

Media Information

Credentials

All members of the media must obtain credentials. Credential requests should be made through the Athletic Media Relations Office.

Press Luncheons

Head coach Tony DiCecco or a member of his staff will be in attendance at the weekly Press Luncheon. Press Luncheons are held every Monday at 12 noon on the lower level of Tally's Grand Cafe on University Avenue in Cedar Falls. The Press Luncheons are open to the public.

Coach/Player Interviews

All non-post game interviews are to be arranged through Dave Moll in the Athletic Media Relations Office. Please do not contact players or coaches directly for interviews.

Radio

Visiting radio lines may be arranged by contacting the Athletic Media Relations Office.

Fax on Demand

Throughout the season, information will be made available through *Info Connection*. Information can be accessed by dialing (770) 399-3066 from the handset of a fax machine. The Missouri Valley Conference System Passcode is 682. The basketball release request number is 1730 and the stats only request number is 1732.

Athletic Media Relations

Women's BB Contact: Dave Moll
Office: (319) 273-3642
Home: (319) 266-3042
Fax: (319) 273-3602
Press Row: (319) 273-6311



Dave Moll

Athletic
Media
Relations
Intern

Panther Basketball on KCNZ

Catch exciting Panther basketball action on KCNZ-AM (1250) this season with Tracey Williams calling the play-by-play. Listed below is the broadcast schedule for this season.



Tracey Williams

Fri., Nov. 29	UNI vs. Niagara
Sun., Dec. 8	UNI vs. Iowa State
Sat., Dec. 14	UNI at Wisconsin-Milwaukee
Sun., Dec. 29	UNI vs. Southern Illinois
Tues., Dec. 31	UNI vs. Evansville
Fri., Jan. 3	UNI at Creighton
Sun., Jan. 5	UNI at Drake
Sat., Jan. 11	UNI vs. SW Missouri State
Mon., Jan. 13	UNI vs. Wichita State
Thurs., Jan. 30	UNI vs. Creighton
Sat., Feb. 1	UNI vs. Drake
Sat., Feb. 15	UNI vs. Bradley
Thurs., Feb. 20	UNI vs. Indiana State
Sat., Feb. 22	UNI vs. Illinois State
Thurs.-Sat., Mar. 6-8	MVC Tournament

The Tony DiCecco Show

Join UNI head coach Tony DiCecco and Tracey Williams approximately 30 minutes before tipoff for *The Tony DiCecco Show*. Hear Coach DiCecco's game and season analysis of Panther basketball.

UNI Media Outlets

Print Media	Phone	Fax	Address
Waterloo Courier	(319) 291-1466	(319) 291-2069	P.O. Box 540 Woaterloo, IA 50704
Des Moines Register	(800) 532-1455	(515) 286-2504	P.O. Box 957 Des Moines, IA 50304
Cedar Rapids Gazette	(319) 398-8257	(319) 398-5861	500 3rd Ave. S.E. Cedar Rapids, IA 52401
Northern Iowan	(319) 273-2157	(319) 273-5931	Univ. of Northern Iowa Cedar Falls, IA 50614
Associated Press	(800) 362-2580	(515) 243-1550	P.O. Box 1741 Des Moines, IA 50306
Quad City Times	(319) 383-2220	(319) 383-2370	PO Box 3828, 124 E. 2nd Davenport, IA 52801
Television	Phone	Address	
KWWL-TV	(319) 291-1290	500 E. 4th St., Waterloo, IA 50703	
KCRG-TV	(319) 398-8391	2nd Ave. at 5th St. S.E., Cedar Rapids, IA 52401	
KGAN-TV	(319) 395-9081	P.O. Box 3131, Cedar Rapids, IA 52406	
Iowa Public Television	(515) 281-4500	P.O. Box 6450, Johnston, IA 50131	
KCCI-TV	(515) 247-8811	P.O. Box 10305, Des Moines, IA 50306	
Radio	Phone	Address	
KCNZ	(319) 277-1918	721 Shirley St., P.O. Box 248, Cedar Falls, IA 50613	
WMT	(319) 395-0533	P.O. Box 2147, Cedar Rapids, IA 52406	
KXEL	(319) 234-6397	Box 1540, Waterloo, IA 50704	
KWLO	(319) 234-2200	Box 1330, Waterloo, IA 50703	
KHAK	(319) 365-9431	425 Second St. N.E., Suite 450, Cedar Rapids, IA 52401	
KOEL	(319) 283-1234	P.O. Box 391, Oelwein, IA 50662	

Experienced Panther Squad Looks to Build on Last Season's Success All Five Starters Return for DiCecco in 1996-97

Experience and balance are two words that can best describe the 1996-97 version of the UNI women's basketball squad. Head coach Tony DiCecco returns 10 letterwinners, including all five starters, from a '95-'96 squad that recorded six conference wins, the highest mark in UNI history. The second-year head coach hopes to build on last year's late season success, which saw the Panthers victorious in five of their final eight regular season contests.

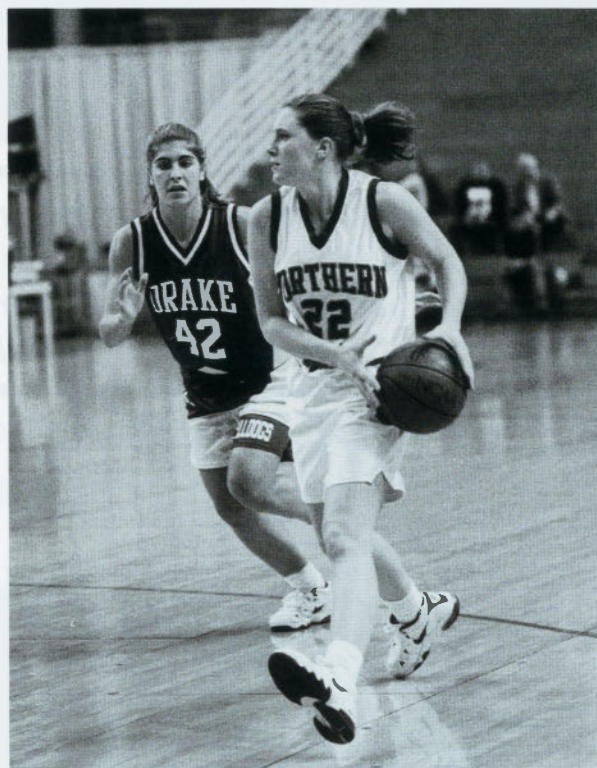
"This year, everyone understands their role on the team. We've been together for a year and know what to expect from each other."

**-- UNI head coach,
Tony DiCecco**

"At this point last year, we were just getting to know each," DiCecco said. "However, this year, everyone understands their role on the team. We've been together for a year and know what to expect from each other."



Senior **Heidi Munz** scored a career-high eight points versus Evansville on January 18, 1996.



Mary Koch returns for her sophomore season after averaging 5.9 points and 2.3 rebounds last year.

The Panthers will be led by senior Kate Lawler and Kelley Westhoff. Lawler, a 5-11 forward, led the team in scoring (14.0 ppg) and rebounding (6.5 rpg) last year. In addition, the Rochester, Minnesota native ranked second on the squad in three-point field goals (26) and blocks (9).

"Lawler's versatility makes her one of the toughest players to defend in the conference," DiCecco said. "She can score from the inside, but she also has a very strong perimeter game."

Westhoff will once again serve as the Panthers' floor general. As a junior, she set a UNI record with 155 assists (5.7 apg), which ranked second in the Missouri Valley Conference. The 5-8 point guard also tied the school record for assists in a game when she tallied 13 against Bradley on February 24, 1996.

"Westhoff is a great floor leader," DiCecco said. "She has the ability to see the entire floor and control the tempo of the game."

Other key returnees for Coach DiCecco include juniors Jen Steffens and Shannan Kadner, sophomores Erin Fox and Mary Koch, and senior Karen Fenske.

Steffens, a 5-11 forward, started 16 games last season. She averaged 9.4 points and 5.6 rebounds, which both ranked among the team leaders.

A 6-1 center, Kadner represents the Panthers' main inside threat. During the '95-'96 campaign, she connected on 47.5 percent of her field goal attempts. In addition, she poured in 8.7 points and grabbed 4.6 boards per outing.

(Continued)

1996-97 Season Outlook

(continued from page three)

Fox, a 5-7 off guard, returns as the team's second leading scorer (9.9 ppg). As a freshman, she shot a team-high 79.5 percent from the free throw line, which ranked sixth in the MVC.

The tandem of Koch and Fenske will give the Panthers a long distance threat. Last year, Koch, a 5-10 guard/forward, ranked second in the MVC in three-point field goal percentage (.404), while

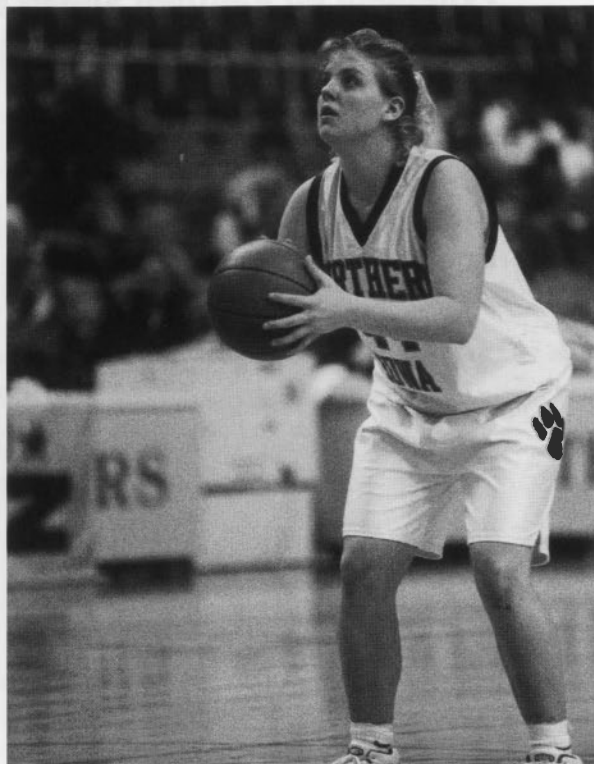
The Panthers return 10 letterwinners, including all five starters, from a '95-'96 squad that recorded six conference wins, the highest mark in UNI history.

Fenske, a 5-9 guard, led the squad in three-point field goals made (29).

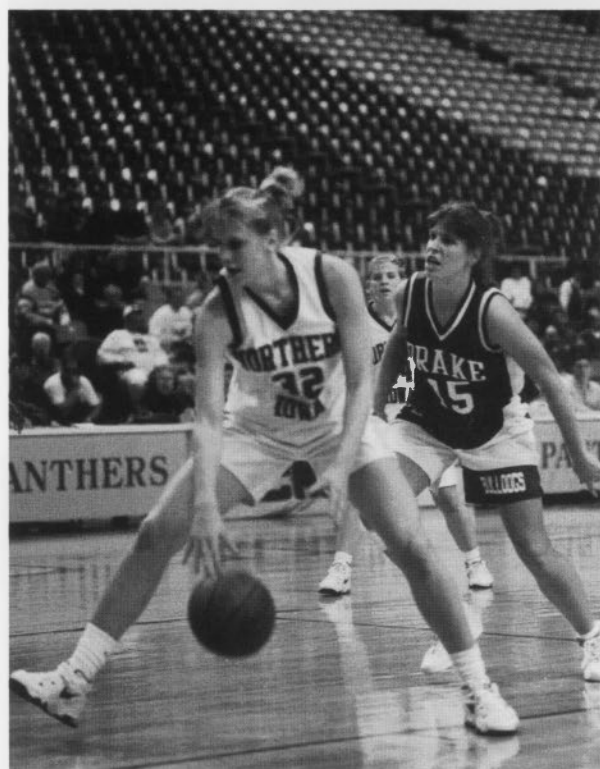
Senior Heidi Munz (5-6, guard) and juniors Adrienne Miskell (6-0, forward) and Jessica Johnson (6-0, forward) round out the returning letterwinners for DiCecco.

Kate Hanneman also returns for the Panthers after a redshirt season in '95-'96. The 5-10 guard/forward has four years of eligibility remaining.

Coach DiCecco is anticipating immediate support from this



Sophomore **Erin Fox** scored a season-high 28 points versus Evansville on February 15, 1996.

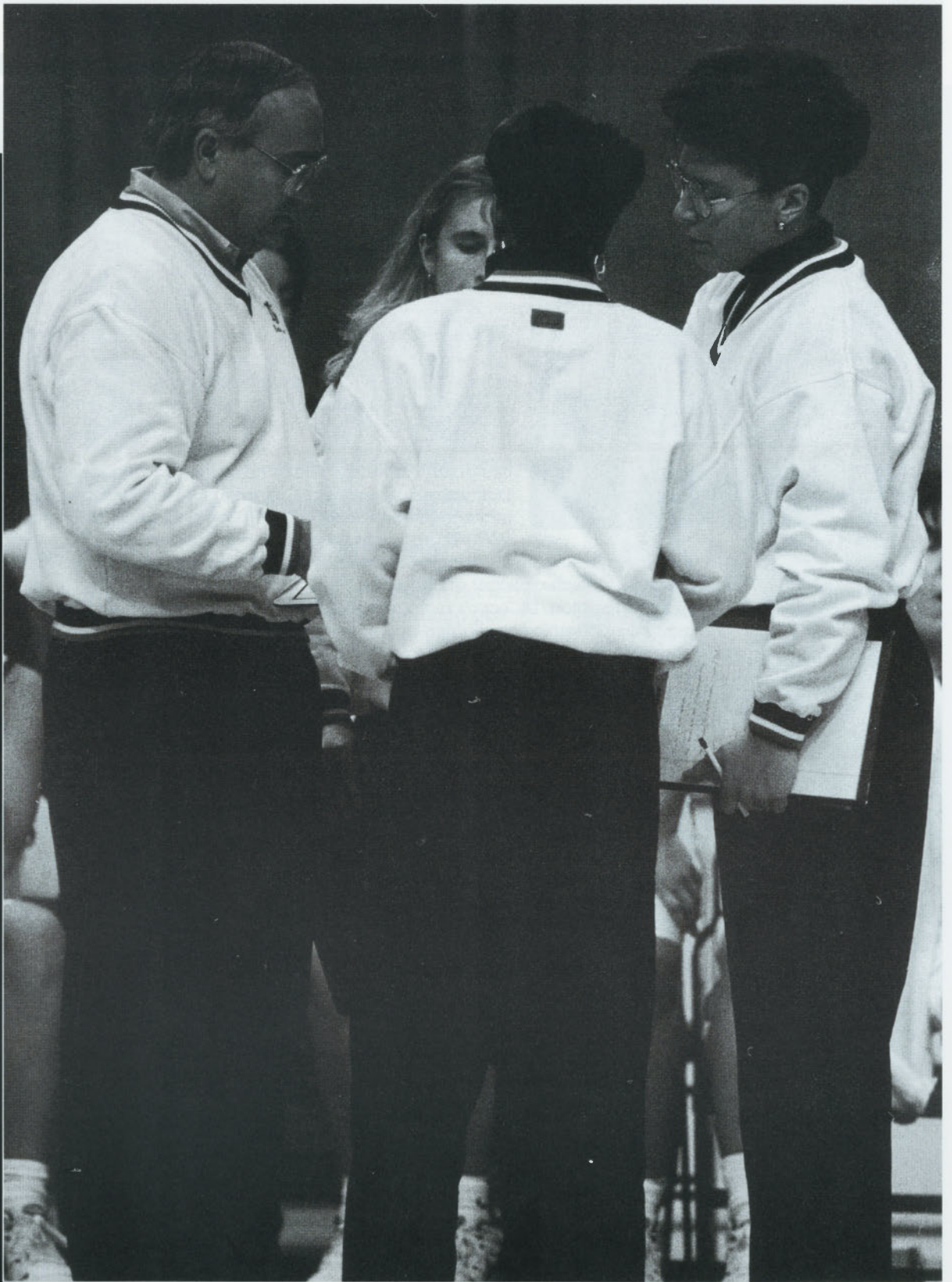


Junior **Shannan Kadner** reached double figures in points on 14 occasions last season.

year's newcomers. Joining the Panther program are freshmen Ky Petersen (5-10, guard/forward), Angella Welch (5-10, forward), Allison Starr (5-9, guard) and Jill Seidl (5-6, guard).

The 1996-97 schedule looks to be very challenging. Once again, the Missouri Valley Conference will be extremely competitive with Southwest Missouri State, Southern Illinois, Illinois State and Drake leading the way. The Panthers' non-conference schedule doesn't provide much relief with road contests at Wisconsin, Cal State-Northridge and Wisconsin-Milwaukee and home meetings with Iowa State, Buffalo and Niagara. UNI opens the regular season at the Nevada Tournament, facing the tourney host on November 22.

With this combination of experience and balance, DiCecco looks to improve upon last year's record-setting season. Last season's appearance in the MVC Tournament marked only the second time a UNI team had reached its conference tournament since becoming Division I. This year, the Panthers plan on returning to the MVC tourney. However, they will not be satisfied just to make the field, the Panthers will be looking to advance toward their first conference title.



Coaching Staff



Head Coach Tony DiCecco

Tony DiCecco enters his second season at the helm of the Northern Iowa women's basketball program. DiCecco and the Panthers are coming off a successful '95-'96 season, which saw UNI advance to the Missouri Valley Conference Tournament for only the second time in school history. In addition, the Panthers tallied a school-record six conference wins.

A 1971 graduate of Upper Iowa University, DiCecco arrived at UNI from Creighton University, where he served as an assistant coach for six seasons. During his six seasons at Creighton, the Bluejays compiled a 122-52 record, including two Western Athletic Conference (WAC) Championships, one WAC Tournament Championship, and two NCAA Tournament appearances.

Nine players made first-team All-Missouri Valley Conference or All-Western Athletic Conference during his tenure as an assistant at Creighton.

While at Creighton, DiCecco's main responsibilities included on-floor practice and game coaching, recruiting and academic coordinator, and assistant director of women's basketball camps. DiCecco was also involved in developing and implementing "We'll Be There", "Adopt-A-School", and "Fun To Read" programs for the basketball team to interact with students to promote drug-free awareness and education awareness in the Omaha, Nebraska area.

While coaching, DiCecco developed a four-year promotional program to elevate the women's basketball program in the Omaha area. Through the interaction with the community and school groups, attendance doubled the first year. He also directed all phases of the season ticket program as well as assisted with advertising sales for the game program. He was also instrumental in establishing a youth support group for the team.

Prior to his arrival at Creighton, DiCecco was the head girls basketball coach at Montezuma Community Schools in Montezuma, Iowa. He compiled a 306-69 record, including eight conference, 10 sectional and two regional championships, as well as two Iowa State Tournament appearances.

DiCecco also served as the head girls softball coach from 1974-86 at Montezuma and head coach from 1971-73 at West Central in Maynard, Iowa. He recorded a third-place finish in the 1973 Iowa State Softball Tournament while at West Central.

His background also includes teaching stints at both Montezuma and West Central. He taught physical education and social studies at a variety of levels.

DiCecco, a native of Niagara, New York, resides in Cedar Falls with Kristi, his wife of 27 years.





Assistant Coach Colleen Heimstead

Colleen Heimstead is entering her fourth season as a full-time assistant on the Panther coaching staff. Heimstead began her coaching career as a graduate assistant for the Panthers in 1992 and was elevated to full-time status the following season.

She serves as the Panthers' recruiting coordinator and is co-director for the summer basketball camps. In addition to coaching the power players, Heimstead is director of the conditioning program and assists with scouting and facilities.

Heimstead was a four-year letterwinner and a two-year team captain at Southern Illinois University, starting 81 of 124 games and averaging 3.3 points and 2.2 rebounds as a senior. She ranks fourth on the all-time SIU assist list with 309 career assists.

While attending SIU, the Elk Mound, Wisconsin native served on several athletic and academic advisory committees, including the Intercollegiate Athletic Advisory Committee and the Gender Equity Committee. She was an honor student and was named to the Gateway Conference All-Academic Team. During the off-seasons, Heimstead served as a counselor at the Wisconsin Coaches Scouting Service Basketball Camps from 1988-91.

Heimstead earned a Bachelor of Arts degree in biological sciences from SIU in 1992.



Assistant Coach Tanya Warren

Tanya Warren begins her second season on the UNI coaching staff. Warren's main responsibilities include academics, scheduling, team travel and directing the Panther strength program. She also serves as the co-director of the summer basketball camps and assists in recruiting and scouting.

A native of Des Moines, Iowa, Warren arrived at UNI from Iowa State University, where she served as an assistant coach for one season.

Warren earned her bachelor's degree in social work at Creighton University in 1988 after leading her team to a Western Athletic Conference Championship. She was named a Kodak All-American after her senior season and finished as the university's all-time career leader in assists, second in steals and fourth in scoring. She was named the team's most valuable player twice and had her number retired after her collegiate career. In addition, Warren was invited to participate in the 1988 Olympic Trials.

In 1992, she was inducted into the Iowa High School Hall of Fame after leading Lincoln High School (Des Moines) to a 75-13 record and three conference championships.

Warren's coaching experience includes two seasons as head coach at Duchesne Academy (Omaha, Nebraska) and three seasons as basketball, volleyball and track coach at Boys Town H.S. (Boys Town, Nebraska).



Graduate Assistant Jenny Nelson

Jenny Nelson (formerly Sandvold) enters her second season as a graduate assistant on the Panther coaching staff. She is responsible for film exchange, directing fifth year staff members, study table and game management, in addition to assisting with conditioning.

Nelson earned her bachelor's degree in psychology from St. Ambrose University in 1995. While at St. Ambrose, she was named to the all-regional basketball team. Prior to her stint at St. Ambrose, Nelson attended the University of Oregon and Kirkwood Community College, where she also played basketball. A native of Cedar Falls, she was named to the Dean's List at all three institutions and earned JUCO All-American and academic All-American honors.

Prior to arriving at UNI, Nelson was an assistant coordinator for Youth Volunteer Corps of the Quad Cities (Davenport, Iowa) from March-August, 1995 where she organized and supervised youth teams to work at various project sites. She was also a volunteer coach for the Davenport Assumption High School women's track team in 1995 and a counselor/coach for AAU girl's basketball in the summers of 1988-94.

Nelson and her husband, Brad, reside in Cedar Falls.

1996-97 UNI Rosters



1996-97 UNI Women's Basketball Team

Front row (l-r): Jessica Johnson, Kate Lawler, Kelley Westhoff, Heidi Munz, Karen Fenske, Jen Steffens

Middle row: Megan Donahue (manager), Colleen Heimstead (assistant coach), Tony DiCecco (head coach), Tanya Warren (assistant coach), Jenny Nelson (graduate assistant), Amanda Truax (student assistant)

Back row: Jill Seidl, Angella Welch, Kate Hanneman, Erin Fox, Adrienne Miskell, Shannan Kadner, Mary Koch, Allison Starr, Ky Petersen, Nancy Bowers (athletic trainer), Brenda Turner (athletic trainer)

Numerical Roster

No.	Name	Pos.	Ht.	Class	Hometown/High School or Junior College
10	Heidi Munz*	G	5-6	Sr.	Milledgeville, Ill./Rock Valley (Ill.) CC
15	Kelley Westhoff***	G	5-8	Sr.	Dubuque, Iowa/Wahlert
20	Ky Petersen	G/F	5-10	Fr.	Avoca, Iowa/AvoHa-Shelby-Tenant
22	Mary Koch*	G/F	5-10	So.	Pequot Lakes, Minn./Pequot Lakes
23	Kate Lawler***	F	5-11	Sr.	Rochester, Minn./Lourdes
24	Karen Fenske***	G	5-9	Sr.	Ellsworth, Wisc./Ellsworth
30	Jill Seidl	G	5-6	Fr.	Carroll, Iowa/Kuemper
32	Shannan Kadner**	C	6-1	Jr.	Conrad, Iowa/BCL-UW
33	Erin Fox*	G	5-7	So.	Denver, Iowa/Denver
40	Jen Steffens**	F	5-11	Jr.	Primghar, Iowa/South O'Brien
44	Angella Welch	F	5-10	Fr.	Des Moines, Iowa/Lincoln
45	Kate Hanneman	G/F	5-10	Fr.	Center Point, Iowa/Center Point-Urbana
50	Allison Starr	G	5-9	Fr.	Wellsburg, Iowa/Wellsburg-Steamboat
52	Jessica Johnson**	F	6-0	Jr.	Madisonville, Ky./North Hopkins
54	Adrienne Miskell**	F	6-0	Jr.	O'Fallon, Ill./O'Fallon Township

Alphabetical Roster

No.	Name
24	Karen Fenske***
33	Erin Fox*
45	Kate Hanneman
52	Jessica Johnson**
32	Shannan Kadner**
22	Mary Koch*
23	Kate Lawler***
54	Adrienne Miskell**
10	Heidi Munz*
20	Ky Petersen
30	Jill Seidl
50	Allison Starr
40	Jen Steffens**
44	Angella Welch
15	Kelley Westhoff***

Breakdown by Class

Seniors (4):	
24	Karen Fenske***
23	Kate Lawler***
10	Heidi Munz*
15	Kelley Westhoff***
Juniors (4):	
52	Jessica Johnson**
32	Shannan Kadner**
54	Adrienne Miskell**
40	Jen Steffens**
Sophomores (2):	
33	Erin Fox*
22	Mary Koch*
Freshmen (5):	
45	Kate Hanneman
20	Ky Petersen
30	Jill Seidl
50	Allison Starr
44	Angella Welch

Coaching Staff

Head Coach:	
Tony DiCecco (Upper Iowa, 1971)	
Assistant Coaches:	
Colleen Heimstead (Southern Illinois, 1992)	
Tanya Warren (Creighton, 1988)	
Graduate Assistant:	
Jenny Nelson (St. Ambrose, 1995)	
Student Assistant:	
Amanda Truax	



Player Profiles



Karen Fenske

5-9 ♦ Guard ♦ Senior

Ellsworth, Wisconsin

Ellsworth High School

24

The Fenske File

Born: 4/2/75

Parents: Robert & Carolyn Fenske

Major: Marketing

Career plans: Marketing research/advertising

Hobbies: Biking, reading, watching TV

"I chose UNI because of its location and its excellent business program."

1995-96: Saw action in 26 contests ... reached double-figures in points on six occasions ... scored season-high 14 points against Niagara (December 29, 1995) ... led squad in three-point field goals made (29) and attempted (118) ... ranked second on team in steals (28) and third in assists (30) ... named honorable mention academic all-conference for second straight season.

1994-95: Played in 26 games with 23 starts ... second-leading scorer with 8.5 points ... scored career-high 17 points versus Southern Illinois on February 18, 1995 ... led squad with 48 three-point field goals and 171 three-point field goal attempts ... ranked second on team with 35 steals ... scored in double figures in 13 contests ... selected honorable mention academic all-conference.

1993-94: Appeared in 21 games in her freshman season ... averaged 2.7 points and 1.2 rebounds per outing ... tallied season-high 15 points versus Bradley (February 11, 1994) ... scored nine points, grabbed five rebounds and dished out five assists vs. Illinois State (February 26, 1994).

High School: Set six scoring records, including total points ... selected all-conference twice ... member of National Honor Society.



Fenske's career highs

Points: 17 vs. Southern Illinois (February 18, 1995)

FGs made: 7 vs. Southern Illinois (February 18, 1995)

FGs att.: 17 vs. Wichita State (January 16, 1995)

FTs made: 5 vs. Buffalo (December 29, 1996)

FTs att.: 7 vs. Buffalo (December 28, 1995)

3-pt. FGs made: 4 vs. Drake (January 9, 1995)

4 vs. Wichita State (January 16, 1995)

3-pt. FGs att.: 15 vs. Wichita State (January 16, 1995)

Rebounds: 7 vs. Illinois State (January 26, 1995)

7 vs. Creighton (February 5, 1995)

Assists: 5 vs. Wisconsin-Milwaukee (December 28, 1994)

Steals: 4 vs. Wisconsin-Milwaukee (December 28, 1994)

Blocks: 2 vs. Buffalo (January 27, 1996)

Fenske's career statistics

Year	GP/GS	--Total--			--3-Point--			-----Rebounds-----			PF-FO	A	TO	BLK	ST	PTS	AVG
		FG-FGA	PCT		FG-FGA	PCT	FT-FTA	PCT	OFF	DEF	TOT						
1993-94	21/1	21-79	.266		7-39	.180	7-11	.636	4	22	26	1.2	16-0	17	21	1	11
1994-95	26/23	81-270	.300		48-171	.281	12-32	.375	21	49	70	2.7	68-2	26	84	3	35
1995-96	26/17	54-195	.277		29-188	.246	22-35	.629	12	52	64	2.5	56-2	30	56	5	28
Totals	77/41	156-544	.287		84-398	.211	41-78	.526	37	123	160	2.1	140-4	73	161	9	74

23

Kate Lawler

5-11 ♦ Forward ♦ Senior

Rochester, Minnesota

Lourdes High School



1995-96: Played and started 26 games ... led team in scoring (14.0) and rebounding (6.5) ... scored career-high 25 points in final regular season game against Indiana State (March 2, 1996) ... reached double figures in points in 22 of 26 games ... shot 71.8 percent (79-for-110) from the free throw line and 36.1 percent (26-for-72) from three-point territory ... chosen honorable mention academic all-conference.

1994-95: Played in 25 games with seven starts ... reached double figures in points on six occasions ... led team in free throw percentage (.853) ... recorded double-double with 11 points and 10 rebounds versus Indiana State (February 23, 1995) ... selected honorable mention academic all-conference ... shot 30.2 percent (16-for-53) from three-point range.

1993-94: Appeared in 22 contests with one start (Morehead State - December 4, 1993) ... averaged 1.9 points and 1.1 rebounds per game ... tallied season-high six points versus Missouri-Kansas City (November 29, 1993) and Illinois State (February 17, 1994).

High School: Led Lourdes High School to two state championships ... earned all-conference, all-city, all-state tournament, and academic all-state honors as a senior ... member of National Honor Society.

The Lawler File

Born: 4/27/75

Parents: Tom and Sue Lawler

Nicknames: "Silk", "Puddin'"

Major: Textile and Apparel

Career plans: Fashion merchandising

Hobbies: Fitness, listening to music

"I chose UNI because it had a lot to offer me academically, athletically, and socially."

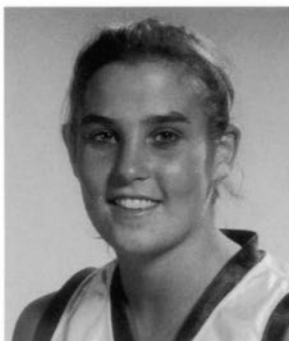


Lawler's career highs

Points: 25 vs. Indiana State (March 2, 1996)
FGs made: 9 vs. Indiana State (March 2, 1996)
FGs att.: 17 vs. Creighton (January 11, 1996)
 17 vs. Indiana State (March 2, 1996)
FTs made: 9 vs. Bradley (February 24, 1996)
FTs att.: 10 vs. Bradley (February 24, 1996)
3-pt. FGs made: 3 vs. Iowa State (December 6, 1995)
3-pt. FGs att.: 7 vs. Iowa State (December 6, 1995)
 7 vs. Minnesota (December 15, 1995)
Rebounds: 13 vs. Evansville (January 18, 1996)
Assists: 5 vs. Indiana State (February 23, 1995)
Steals: 4 vs. Southern Illinois (February 18, 1995)
Blocks: 2 vs. Evansville (February 16, 1995)
 2 vs. Indiana State (March 2, 1996)

Lawler's career statistics

Year	GP/GS	--Total--		--3-Point--		-----Rebounds-----										PTS	AVG	
		FG-FGA	PCT	FG-FGA	PCT	FT-FTA	PCT	OFF	DEF	TOT	AVG	PF-FO	A	TO	BLK			ST
1993-94	22/1	16-47	.340	2-10	.200	7-9	.778	9	16	25	1.1	21-0	16	19	1	7	41	1.9
1994-95	25/7	48-146	.329	16-53	.302	29-34	.853	17	41	58	2.3	39-0	27	58	4	16	141	5.6
1995-96	26/26	130-317	.410	26-72	.361	79-110	.718	60	110	170	6.5	94-6	29	66	9	24	365	14.0
Totals	73/34	194-510	.380	44-135	.326	115-153	.752	86	167	253	3.5	154-6	72	143	14	47	547	7.5



Heidi Munz

5-6 ♦ Guard ♦ Senior

Milledgeville, Illinois

Milledgeville High School/Rock Valley (Ill.) C.C.

10

The Munz File

Born: 9/19/75

Parents: Kathy Shaw and Lanny Munz

Nickname: "Munzy"

Major: Elementary education

Career plans: Teach and coach at elementary level

Hobbies: Running, bike riding

"I chose UNI because I wanted to be a part of building the women's basketball program."

1995-96: Played in 25 contests in her first season with the Panthers ... scored a career-high 11 points in a 78-60 UNI victory over Evansville on January 18, 1996 ... shot 33.3 percent (11-for-33) from three-point territory on the season ... grabbed a career-high six rebounds against Wisconsin (January 16, 1996) ... connected on eight of her 10 free throw attempts for the season ... made her only start of the season versus Creighton on January 11, 1996.

Rock Valley Community College: Earned second team all-conference honors ... named to NJCAA National Team ... also lettered in volleyball.

High School: Selected first team all-conference, all area at Milledgeville High School ... led team in assists, free throw percentage ... also earned varsity letters in track, volleyball, softball ... member of National Honor Society ... student council, class vice president.

Munz's career highs

Points: 11 vs. Evansville (January 18, 1996)

FGs made: 4 vs. Evansville (January 18, 1996)

FGs att.: 8 vs. Evansville (January 18, 1996)

FTs made: 2 - several occasions

FTs att.: 2 - several occasions

3-pt. FGs made: 3 vs. Evansville (January 18, 1996)

3-pt. FGs att.: 6 vs. Indiana State (January 2, 1996)

6 vs. Southwest Missouri State (January 7, 1996)

Rebounds: 6 vs. Wisconsin (January 16, 1996)

Assists: 4 vs. Niagara (December 29, 1995)

Steals: 2 vs. Illinois State (January 4, 1996)

2 vs. Southwest Missouri State (January 7, 1996)

2 vs. Evansville (January 18, 1996)

Blocks: none



Munz's career statistics

Year	GP/GS	--Total--		--3-Point--		FT-FTA		-----Rebounds-----											
		FG-FGA	PCT	FG-FGA	PCT	PCT		OFF	DEF	TOT	AVG	PF-FO	A	TO	BLK	ST	PTS	AVG	
1995-96	25/2	19-65	.292	11-33	.333	8-10	.800	11	12	23	0.9	34-0	12	17	0	12	57	2.3	
Totals	25/2	19-65	.292	11-33	.333	8-10	.800	11	12	23	0.9	34-0	12	17	0	12	57	2.3	

15

Kelley Westhoff

5-8 ♦ Guard ♦ Senior

Dubuque, Iowa

Wahlert High School

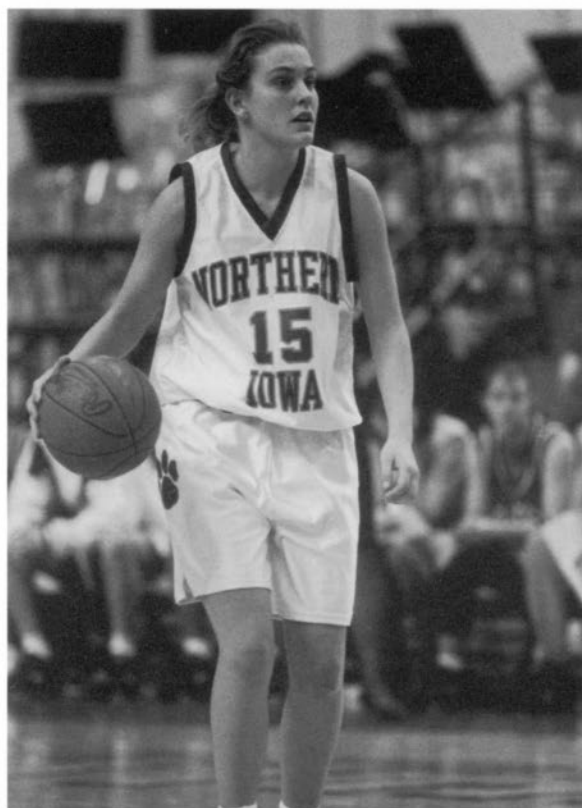


1995-96: Only player to start all 27 games last season ... set school records for assists in a season (155) and in a game (13 vs. Bradley, February 24, 1996) ... reached double figures in points on five occasions, scoring a career-high 13 versus Illinois State (February 28, 1996) ... named honorable mention academic all-conference for second consecutive year.

1994-95: Appeared in 26 games, with 18 starts ... led team in assists (84) and was third in steals (31) ... shot 75.6 percent (34-for-45) from the free throw line ... tallied season-high nine assists against Evansville (February 16, 1995) ... averaged 3.7 points and 3.4 rebounds per outing ... selected honorable mention academic all-conference.

1993-94: Played in 26 contests ... started 15 games as a freshman ... recorded season-high six steals versus Creighton (January 29, 1994) ... averaged 3.5 points, 2.5 rebounds, and 2.2 assists per outing ... shot 70.0 percent (21-for-30) from the charity stripe on the season.

High School: Set school records for career assists and steals ... selected to Iowa all-star team and Iowa select team as a senior ... ranked second in state in assists her senior year ... named all-conference and all-area ... member of National Honor Society.



The Westhoff File

Born: 1/13/75

Parents: Bob and Sue Westhoff

Major: Finance (real estate)

Career plans: Pursue a career in financial planning and real estate

Hobbies: Biking, skiing, watching movies

"One thing I really like about UNI is its size and the friendliness of the people."

Westhoff's career highs

Points: 13 vs. Illinois State (February 28, 1996)

FGs made: 5 vs. Wichita State (January 9, 1996)
5 vs. Illinois State (February 28, 1996)

FGs att.: 11 vs. Buffalo (December 28, 1995)

FTs made: 7 vs. Southwest Missouri State (January 7, 1996)

FTs att.: 8 vs. Southwest Missouri State (January 7, 1996)

3-pt. FGs made: 1 - several occasions

3-pt. FGs att.: 4 vs. Wisconsin (January 16, 1996)

Rebounds: 9 vs. Indiana State (January 2, 1996)
9 vs. Bradley (February 24, 1996)

Assists: 13 vs. Bradley (February 24, 1996)

Steals: 7 vs. Illinois State (February 28, 1996)

Blocks: 1 - several occasions

Westhoff's career statistics

	--Total--			--3-Point--			-----Rebounds-----											
Year	GP/GS	FG-FGA	PCT	FG-FGA	PCT	FT-FTA	PCT	OFF	DEF	TOT	AVG	PF-FO	A	TO	BLK	ST	PTS	AVG
1993-94	26/15	35-92	.380	0-2	.000	21-30	.700	11	57	68	2.6	39-0	56	67	4	33	91	3.5
1994-95	26/18	31-97	.320	1-5	.200	34-45	.756	15	74	89	3.4	55-3	84	56	4	31	97	3.7
1995-96	27/27	58-154	.377	6-28	.214	35-55	.636	30	95	125	4.6	83-3	155	105	8	61	157	5.8
Totals	75/60	124-343	.362	7-35	.200	90-130	.692	56	226	282	3.8	177-6	295	228	16	125	345	4.6



Jessica Johnson

6-0 ♦ Forward ♦ Junior

Madisonville, Kentucky

North Hopkins High School

52

The Johnson File

Born: 2/19/76

Parents: Fred and Linda Johnson

Nickname: "J.J."

Major: Elementary and middle school education

Career plans: Teach in an elementary or middle school

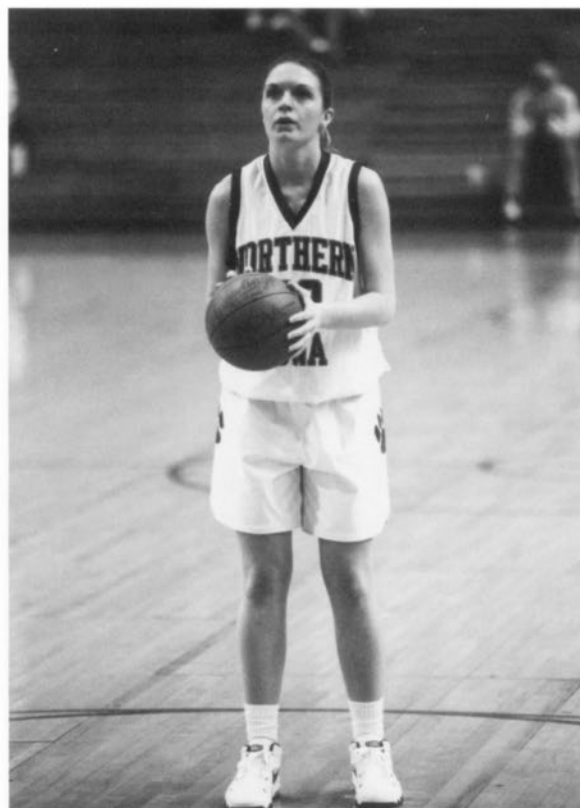
Hobbies: Reading, biking, swimming, skiing

"One thing I really like about UNI is that I've been able to experience things that I wouldn't have at any other school."

1995-96: Saw action in all 27 games, starting one ... scored season-high 10 points against St. Joseph's (December 3, 1995) ... led squad in field goal shooting percentage (.585) connecting on 24 of 41 attempts ... hit eight of 10 free throw attempts versus St. Joseph's ... shot 69.8 percent from the free throw line on the season.

1993-94: Played in 26 games, starting 14 ... scored career-high 12 points versus Bradley (March 4, 1995) ... grabbed career-high six rebounds on three different occasions ... ranked second on team in free throw shooting percentage (.804), connecting on 37 of her 46 attempts ... shot 44.5 percent (36-for-81) from the field ... averaged 4.2 points and 3.2 rebounds per contest.

High School: Averaged 17.0 points and 9.0 rebounds as a senior ... earned state, regional, district, and conference postseason accolades following her senior season ... named team Most Valuable Player in her final year ... also earned a varsity letter in track and field.



Johnson's career highs

Points: 12 vs. Bradley (March 4, 1995)

FGs made: 5 vs. Northern Arizona (December 30, 1994)

FGs att.: 12 vs. Northern Arizona (December 30, 1994)

FTs made: 8 vs. St. Joseph's (December 3, 1995)

FTs att.: 10 vs. St. Joseph's (December 3, 1995)

3-pt. FGs made: none

3-pt. FGs att.: none

Rebounds: 6 vs. Missouri-Kansas City (December 20, 1994)

6 vs. Wisconsin-Milwaukee (December 28, 1994)

6 vs. Evansville (January 21, 1995)

Assists: 4 vs. Evansville (January 18, 1996)

Steals: 2 - several occasions

Blocks: 3 vs. Evansville (January 21, 1995)

Johnson's career statistics

Year	GP/GS	--Total--			--3-Point--			FT-FTA			-----Rebounds-----			PF-FO A			TO BLK ST			PTS AVG	
		FG-FGA	PCT		FG-FGA	PCT		PCT			OFF	DEF	TOT	AVG							
1994-95	26/14	36-81	.445		0-0	.000		37-46	.804		26	56	82	3.2	66-4	16	40	6	15	109	4.2
1995-96	27/1	24-41	.585		0-0	.000		30-43	.698		10	29	39	1.4	38-0	8	17	0	9	78	2.9
Totals	53/15	60-122	.492		0-0	.000		67-89	.753		36	85	121	2.3	104-4	24	57	6	24	187	3.5

32

Shannan Kadner

6-1 ♦ Center ♦ Junior

Conrad, Iowa

BCL-UW High School



1995-96: Saw action in 27 games, starting 24 ... ranked fourth on team in scoring (8.7 ppg) and third in rebounding (4.6 rpg) ... scored career-high 20 points against Iowa State on December 6, 1995 ... notched first career double-double with 14 points and 10 rebounds in win over Evansville (January 18, 1996) ... reached double figures in points in 14 games ... had 16 points and nine rebounds against Minnesota (December 15, 1995).

1994-95: Played in 21 games with two starts ... tallied season-high in points (nine) and rebounds (seven) versus Evansville (February 16, 1995) ... shot 72.7 percent (8-11) from the free throw line and 42.4 percent (21-66) from the field on the season ... scored eight points on two occasions ... recorded 10 steals on the season.

High School: Selected all-state following senior season ... named all-conference following junior and senior campaigns ... led BCL-UW team to conference championship as a senior ... scored 2,059 points in her career ... also earned all-conference in volleyball and qualified for track and field state finals ... member of National Honor Society.



The Kadner File

Born: 3/25/76

Parents: Jim and Donna Kadner

Nicknames: "Kads", "Farmer", "Momma"

Major: Public relations

Career plans: To be a success in the field of public relations/marketing

Hobbies: Being with friends and boyfriend, shopping, listening to music

"I chose UNI because I wanted to help build a successful women's basketball program."

Kadner's career highs

Points: 20 vs. Iowa State (December 6, 1995)

FGs made: 9 vs. St. Joseph's (December 3, 1995)
9 vs. Iowa State (December 6, 1995)

FGs att.: 16 vs. St. Joseph's (December 3, 1995)

FTs made: 8 vs. Wichita State (March 3, 1996)

FTs att.: 11 vs. Wichita State (March 3, 1996)

3-pt. FGs made: none

3-pt. FGs att.: none

Rebounds: 10 vs. Evansville (January 18, 1996)

Assists: 3 vs. Missouri-Kansas City (December 17, 1995)

Steals: 2 - several occasions

Blocks: 2 vs. Evansville (February 16, 1995)

2 vs. Creighton (January 11, 1996)

Kadner's career statistics

	--Total--			--3-Point--			-----Rebounds-----												
Year	GP/GS	FG-FGA	PCT	FG-FGA	PCT	FT-FTA	PCT	OFF	DEF	TOT	AVG	PF-FO	A	TO	BLK	ST	PTS	AVG	
1994-95	21/2	21-66	.424	0-0	.000	8-11	.727	19	30	49	2.3	41-3	4	16	6	10	64	3.1	
1995-96	27/24	97-204	.475	0-0	.000	41-56	.732	50	74	124	4.6	88-6	11	35	8	11	235	8.7	
Totals	48/26	118-270	.435	0-0	.000	49-67	.731	69	104	173	3.6	129-9	15	51	14	21	299	6.2	



Adrienne Miskell

6-0 ♦ Forward ♦ Junior

O'Fallon, Illinois

O'Fallon Township High School

54

The Miskell File

Born: 1/8/76

Parents: Sandra Miskell

Nickname: "A"

Major: Management Information Systems

Career plans: Top management position in an MIS dept. of a large retail corporation

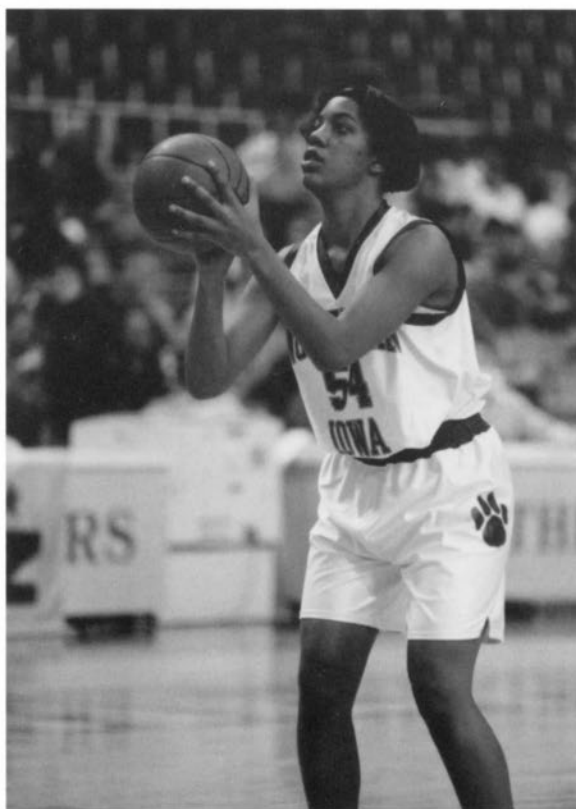
Hobbies: Volleyball, listening to music, hanging out with friends

"One thing I really like about UNI is the people and the professors."

1995-96: Played in 23 games ... averaged 3.8 points per outing ... scored career-high 13 points versus Niagara (December 29, 1995), connecting on five of her 10 field goal attempts ... recorded 10 points and six rebounds against Illinois State (February 28, 1996) ... shot 42.2 percent (27-64) from the field on the season ... tallied career-high seven rebounds against Creighton on January 11, 1996.

1994-95: Appeared in 24 games ... made only start versus Washington State (December 2, 1994) ... scored season-high eight points in 67-47 victory over Wisconsin-Milwaukee (December 28, 1994) ... grabbed six rebounds on two occasions (Wisconsin-Milwaukee, Northern Arizona) ... averaged 2.2 points and 2.1 rebounds ... tallied seven steals and five blocks on the season.

High School: Holds school record for points and rebounds in a career ... also set single game records in points (40) and rebounds (19) ... selected first team all-area as a junior and senior ... named school's Most Valuable Athlete as a senior ... earned varsity letters in volleyball and softball ... member of National Honor Society.



Miskell's career highs

Points: 13 vs. Niagara (December 29, 1995)

FGs made: 5 vs. Niagara (December 29, 1995)

FGs att.: 10 vs. Niagara (December 29, 1995)

FTs made: 6 vs. Creighton (January 11, 1996)

6 vs. Illinois State (February 28, 1996)

FTs att.: 7 vs. Illinois State (February 28, 1996)

3-pt. FGs made: none

3-pt. FGs att.: none

Rebounds: 7 vs. Creighton (January 11, 1996)

Assists: 2 vs. Indiana State (February 23, 1995)

Steals: 2 vs. Drake (February 2, 1995)

Blocks: 2 vs. Northern Arizona (December 30, 1994)

Miskell's career statistics

Year	—Total—			—3-Point—			—Rebounds—											
	GP/GS	FG-FGA	PCT	FG-FGA	PCT	FT-FTA	PCT	OFF	DEF	TOT	AVG	PF-FO	A	TO	BLK	ST	PTS	AVG
1994-95	24/1	20-64	.313	0-0	.000	10-22	.455	25	27	52	2.2	33-2	3	10	5	7	50	2.1
1995-96	23/2	27-64	.422	0-0	.000	33-51	.647	30	34	64	2.8	44-1	1	19	3	4	87	3.8
Totals	47/3	47-128	.368	0-0	.000	43-73	.585	55	61	116	2.5	77-3	4	29	8	11	137	2.9

40

Jen Steffens

5-11 ♦ Forward ♦ Junior
Primghar, Iowa
South O'Brien High School



1995-96: Saw action in 27 games, starting 16 ... ranked second on squad in rebounding (5.6 rpg) and third in scoring (9.4 ppg) ... tallied two double-doubles ... notched career-high 11 rebounds on two different occasions ... reached double figures in scoring 12 times ... averaged 19.0 points and 5.5 rebounds in back-to-back UNI victories over Drake and Creighton ... named honorable mention academic all-conference.

1994-95: Played in all 26 games with 14 starts ... scored career-high 22 points versus Missouri-Kansas City (December 20, 1994) ... ranked second on squad in scoring (8.9 ppg) and rebounding (4.0 rpg) ... reached double figures in scoring on 13 occasions ... recorded double-double with 11 points and 10 rebounds against Bradley (January 4, 1995).

High School: Selected first team all-state ... ranks as school's all-time career scoring and rebounding leader ... averaged 26 points, 10 rebounds, and four steals as a senior ... named all-state in volleyball ... also earned varsity letters in golf and track & field ... valedictorian and senior class president ... member of National Honor Society and FCA Ambassadors.



The Steffens File

Born: 1/19/76
Parents: Marj and Dave Steffens
Major: Finance
Hobbies: Running, shopping

"I chose UNI because I wanted to be part of something from the start and I wanted to make a difference."

Steffens' career highs

Points: 22 vs. Missouri-Kansas City (December 20, 1994)
FGs made: 8 vs. Missouri-Kansas City (December 20, 1994)
FGs att.: 17 vs. Bradley (January 4, 1995)
FTs made: 8 vs. Utah (December 3, 1994)
FTs att.: 10 vs. Creighton (February 10, 1996)
3-pt. FGs made: 2 - several occasions
3-pt. FGs att.: 5 vs. Kansas (December 6, 1994)
5 vs. Missouri-Kansas City (December 20, 1994)
5 vs. Wichita State (January 9, 1996)
Rebounds: 11 vs. Evansville (January 18, 1996)
11 vs. Wichita State (February 3, 1996)
Assists: 2 - several occasions
Steals: 4 vs. Wisconsin (January 16, 1996)
Blocks: 1 - several occasions

Steffens' career statistics

	---Total---			--3-Point--			-----Rebounds-----												
Year	GP/GS	FG-FGA	PCT	FG-FGA	PCT	FT-FTA	PCT	OFF	DEF	TOT	AVG	PF-FO	A	TO	BLK	ST	PTS	AVG	
1994-95	26/14	76-234	.325	13-48	.271	65-100	.650	36	67	103	4.0	59-1	17	75	5	21	230	8.9	
1995-96	27/16	81-237	.342	12-47	.255	81-120	.675	71	81	152	5.6	55-0	14	66	4	28	255	9.4	
Totals	53/30	157-471	.333	25-95	.263	146-220	.664	107	148	255	4.8	114-1	31	141	9	29	485	9.2	



Erin Fox

5-7 ♦ Guard ♦ Sophomore

Denver, Iowa

Denver High School

33

The Fox File

Born: 1/11/77

Parent: Kim Fox

Major: Secondary education

Career plans: Continue to play basketball after college

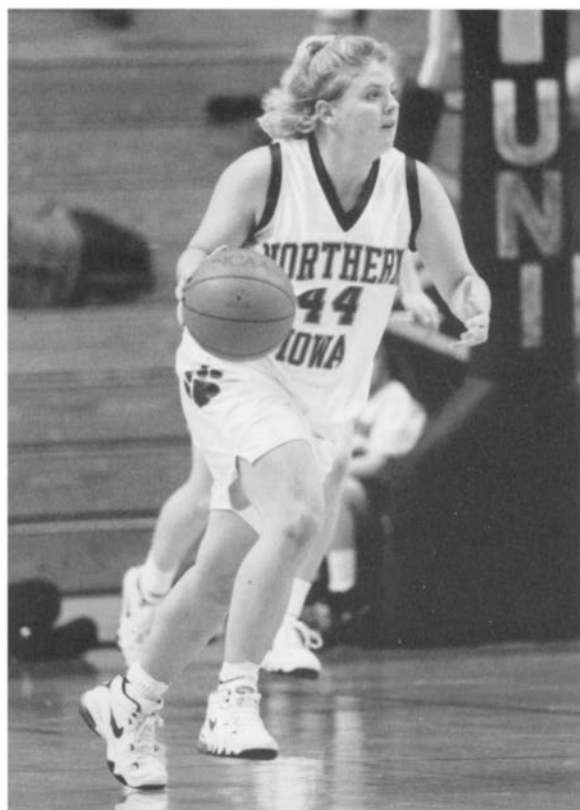
"I chose UNI because its close to home and I wanted to help build the women's basketball program."

1995-96: Played in all 27 games ... started the final 10 games of the season ... ranked second on squad in scoring (9.9) and assists (1.8) ... shot team-high 79.5 percent (97-122) from the free throw line on the season ... scored career-high 28 points in overtime victory at Evansville (February 15, 1996) ... reached double figures in points on 11 occasions ... connected on 12 of 13 free throw attempts (.923) and grabbed career-high eight rebounds against Bradley (February 24, 1996).

High School: Two-time first team all-state selection ... named conference Most Valuable Player twice ... led state in assists as a senior ... chosen honorable mention All-America by *USA Today* ... led Denver High School to a record of 44-2 during her junior and senior seasons ... member of National Honor Society.

Fox's career highs

Points: 28 vs. Evansville (February 15, 1996)
FGs made: 7 vs. Evansville (February 15, 1996)
 7 vs. Indiana State (March 2, 1996)
FGs att.: 23 vs. Illinois State (February 28, 1996)
FTs made: 12 vs. Evansville (February 15, 1996)
 12 vs. Bradley (February 24, 1996)
FTs att.: 15 vs. Evansville (February 15, 1996)
3-pt. FGs made: 3 vs. Southwest Missouri St. (Feb. 1, 1996)
3-pt. FGs att.: 8 vs. Illinois State (February 28, 1996)
Rebounds: 8 vs. Bradley (February 24, 1996)
Assists: 6 vs. Drake (February 20, 1996)
Steals: 2 - several occasions
Blocks: 1 vs. Evansville (February 18, 1996)



Fox's career statistics

Year	GP/GS	---Total---		--3-Point--				-----Rebounds-----										
		FG-FGA	PCT	FG-FGA	PCT	FT-FTA	PCT	OFF	DEF	TOT	AVG	PF-FO	A	TO	BLK	ST	PTS	AVG
1995-96	27/10	77-188	.410	16-51	.314	97-122	.795	21	47	68	2.5	54-0	48	68	1	20	267	9.9
Totals	27/10	77-188	.410	16-51	.314	97-122	.795	21	47	68	2.5	54-0	48	68	1	20	267	9.9

22

A black and white portrait of a young woman with light-colored hair pulled back, smiling. She is wearing a dark-colored top with a light-colored strap over her shoulder. The background is a plain, light color.

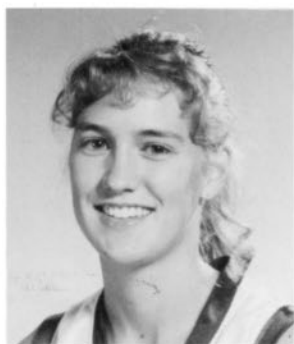
High School: Named all-conference four years ... two-time district Most Valuable Player ... all-state honorable mention selection as a senior ... chosen Minnesota All-Star ... was finalist for state player of the year honors her senior season ... named team's MVP last three years ... earned all-conference honors in volleyball following her sophomore, junior and senior seasons ... also participated in track, finishing sixth in state in the long jump her senior season ... member of National Honor Society.

***"I chose UNI
because I had
a great feeling
about the
place!"***



Points: 16 vs. Wichita State (February 3, 1996)
FGs made: 6 vs. Wichita State (February 3, 1996)
FGs att.: 12 vs. Bradley (February 24, 1996)
FTs made: 4 vs. Creighton (January 11, 1996)
 4 vs. Southern Illinois (February 17, 1996)
FTs att.: 4 - several occasions
3-pt. FGs made: 3 vs. Wichita State (February 3, 1996)
 3 vs. Southern Illinois (February 17, 1996)
3-pt. FGs att.: 5 - four occasions
Rebounds: 7 vs. Southern Illinois (February 17, 1996)
Assists: 4 vs. Bradley (February 24, 1996)
Steals: 2 - several occasions
Blocks: 1 vs. Wichita State (January 9, 1996)
 1 vs. Evansville (February 15, 1996)

Year	--Total--			--3-Point--			-----Rebounds-----										PTS AVG	
	GP/GS	FG-FGA	PCT	FG-FGA	PCT	FT-FTA	PCT	OFF	DEF	TOT	AVG	PF-FO	A	TO	BLK	ST		
1995-96	23/10	49-126	.389	21-52	.404	16-22	.727	13	41	54	2.3	29-0	18	45	2	15	135	5.9
Totals	23/10	49-126	.389	21-52	.404	16-22	.727	13	41	54	2.3	29-0	18	45	2	15	135	5.9



Kate Hanneman

5-10 ♦ Guard/Forward ♦ Freshman

Center Point, Iowa

Center Point-Urbana High School

45

1995-96: Redshirted due to injury.

High School: First team all-state selection following junior and senior seasons ... led Center Point-Urbana to 1995 Class 2A state championship ... chosen first team all-conference three seasons ... selected to 1995 all-state tournament team ... also played volleyball, softball and track ... earned honorable mention all-state honors in volleyball ... named first team all-conference in softball three years and first team all-district as a senior ... member of school record 4 x 800, distance medley and 4 x 400 relay teams ... member of National Honor Society ... senior class president.

The Hanneman File

Born: 9/13/76

Parents: David and Carol Hanneman

Major: Biology

Hobbies: Sports, movies, playing cards

"I chose UNI because it is a great school and I liked what I saw on my visit."

20

Ky Petersen

5-10 ♦ Guard/Forward ♦ Freshman

Avoca, Iowa

AvoHa-Shelby Tenant High School



The Petersen File

Born: 11/23/77

Parents: Greg and Marge Petersen

Major: Marketing

"I chose UNI because of the friendly and family-like atmosphere. Also, the school is not too big and not too small."

High School: Averaged 20.4 points, 10.6 rebounds, and 6.6 assists per game as a senior ... named all-academic ... earned all-state, all-conference, and all-area honors ... played six-on-six basketball as a freshman at AvoHa-Shelby Tenant ... had career scoring average of 20.5 points ... also lettered in volleyball and track, earning all-conference honors in both.

30

Jill Seidl

5-6 ♦ Guard ♦ Freshman
Carroll, Iowa
Kuemper High School



The Seidl File

Born: 2/16/78
Parents: Tom and Lori Seidl
Major: Biology/chemistry
Career plans: Sports medicine

"I chose UNI because when I visited campus, I just knew this was me. I was also very impressed with the women's basketball coaching staff."

High School: Selected all-state second team and all-conference first team as a senior ... earned academic all-conference honors ... led Kuemper High School team to 19-2 record as junior and an 18-5 record as a sophomore, which included a trip to the state tournament ... averaged 8.7 points, 5.9 assists, 4.0 steals, and 3.0 rebounds per outing as a junior ... also participated in cross country and track, earning academic all-conference honors in both ... member of National Honor Society (co-president) ... student council vice president ... Monogram Club president.



Allison Starr

5-9 ♦ Guard ♦ Freshman
Wellsburg, Iowa
Wellsburg-Steamboat Rock High School

50

High School: Named league Most Valuable Player following sophomore, junior and senior seasons ... averaged 19.4 points, 6.4 rebounds, 4.4 assists and 4.7 steals per game as a senior ... three-time all-conference performer ... two-time all-academic selection ... named first team all-state as a senior by the *Des Moines Register* ... also participated in volleyball, softball and track ... three-time first team all-conference volleyball player ... three-time conference long jump champion, 1994 state champion, 1995 state runner-up ... first team all-conference in softball as a sophomore.

The Starr File

Born: 10/6/77
Parents: Kirk and Deb Starr
Nicknames: Al, Tuke
Major: Undecided
Hobbies: Any kind of sports

"I chose UNI because of how close it is to my family and friends and the coaching staff."



Angella Welch

5-10 ♦ Forward ♦ Freshman
Des Moines, Iowa
Lincoln High School

44

High School: Two-time Central Iowa Metro League division scoring champion ... 1995-96 CIML Player of the Year ... named first team all-conference on two occasions ... averaged 18.6 points per game as a senior and 15.9 points as a junior ... selected first team all-state following her senior season ... also participated in track and field at Lincoln High School ... placed second in state 200-meter finals as a sophomore and third as a junior ... also placed third in state high jump finals and sixth in state 100-meter finals.

The Welch File

Born: 2/7/78
Parents: Teresa and Thomas Hawkins, Ron Welch
Nickname: Welch's
Major: Communications
Career plans: Advertising
Hobbies: Reading

"I chose UNI because it was close to home, but not too close."

Panther Support Staff



Nancy Bowers
 Athletic Trainer



Amanda Truax
 Student Assistant



Brenda Turner
 Athletic Trainer



Megan Donahue
 Manager

1995-96 Final Statistics

Player	GP-GS	--Total--		--3-Point--		FT-FTA	PCT	---Rebounds---			AVG	PF-FO	A	TO	BLK	ST	PTS	AVG
		FG-FGA	PCT	FG-FGA	PCT			OFF	DEF	TOT								
Kate Lawler	26-26	130-317	.410	26-72	.361	79-110	.718	60	110	170	6.5	94-6	29	66	9	24	365	14.0
Erin Fox	27-10	77-188	.410	16-51	.314	97-122	.795	21	47	68	2.5	54-0	48	48	1	20	267	9.9
Jen Steffens	27-16	81-237	.342	12-47	.255	81-120	.675	71	81	152	5.6	55-0	14	66	4	28	255	9.4
Shannan Kadner	27-24	97-204	.475	0-0	.000	41-56	.732	50	74	124	4.6	88-6	11	35	8	11	235	8.7
Karen Fenske	26-17	54-195	.277	29-118	.246	22-35	.629	12	52	64	2.5	56-2	30	56	5	28	159	6.1
Kelley Westhoff	27-27	58-154	.377	6-28	.214	35-55	.636	30	95	125	4.6	83-3	155	105	8	61	157	5.8
Mary Koch	23-10	49-126	.389	21-52	.404	16-22	.727	13	41	54	2.3	29-0	18	45	2	15	135	5.9
Adrienne Miskell	23-2	27-64	.422	0-0	.000	33-51	.647	30	34	64	2.8	44-1	1	19	3	4	87	3.8
Jessica Johnson	27-1	24-41	.585	0-0	.000	30-43	.698	10	29	39	1.4	38-0	8	17	0	9	78	2.9
Carrie Jaspers	26-0	24-45	.533	0-0	.000	15-33	.455	16	50	66	2.5	41-1	5	16	12	15	63	2.4
Heidi Munz	25-2	19-65	.292	11-33	.333	8-10	.800	11	12	23	0.9	34-0	12	17	0	12	57	2.3
Becky Simonson	21-0	14-44	.318	0-0	.000	4-9	.444	13	10	23	1.1	24-1	3	11	3	1	32	1.5
Amanda Truax	3-0	0-3	.000	0-2	.000	0-1	.000	0	1	1	0.3	1-0	1	0	0	0	0	0.0
TOTALS	27	654-1683	.389	121-403	.300	461-667	.691	392	699	1091	40.4	641-20	335	527	55	228	1890	70.0
OPPONENTS	27	708-1616	.438	114-331	.344	582-851	.684	389	782	1171	43.4	590	412	516	97	308	2112	78.2

1995-96 Results (7-20, 6-12 MVC)

DATE	OPPONENT	SCORE	W/L	ATT.	HIGH SCORER	HIGH REBOUNDER
12/2/95	at Kansas#	71-95	L	857	(15) Erin Fox	(5) Kate Lawler, Karen Fenske
12/3/95	vs. St. Joseph's (Pa.)#	64-68	L	200	(18) Shannan Kadner	(6) Kelley Westhoff, Shannan Kadner
12/6/95	at Iowa State	66-96	L	1,045	(20) Shannan Kadner	(5) Shannan Kadner, Jen Steffens
12/15/95	MINNESOTA	68-80	L	265	(16) Kate Lawler, Shannan Kadner	(10) Kate Lawler
12/17/95	MISSOURI-KANSAS CITY	68-47	W	538	(10) Kate Lawler, Shannan Kadner, Jen Steffens	(9) Kate Lawler, Jen Steffens
12/28/95	at Buffalo	65-73	L	125	(15) Kate Lawler	(8) Kate Lawler, Shannan Kadner
12/29/95	at Niagara	85-88	L	105	(14) Karen Fenske, Jen Steffens	(8) Kelley Westhoff, Jen Steffens
1/2/96	at Indiana State*	70-86	L	370	(17) Kate Lawler	(11) Kate Lawler
1/4/96	at Illinois State*	65-76	L	3,721	(12) Shannan Kadner	(7) Kate Lawler
1/7/96	SW MISSOURI STATE*	64-83	L	331	(14) Kate Lawler	(7) Shannan Kadner
1/9/96	WICHITA STATE*	62-68	L	212	(17) Jen Steffens	(7) Kelley Westhoff, Jen Steffens
1/11/96	at Creighton*	67-73	L	457	(16) Kate Lawler	(12) Kate Lawler
1/16/96	WISCONSIN	68-95	L	526	(14) Kate Lawler, Shannan Kadner	(6) Heidi Munz, Shannan Kadner (6)
1/18/96	EVANSVILLE*	78-60	W	60	(14) Shannan Kadner, Jen Steffens	(13) Kate Lawler
1/20/96	SOUTHERN ILLINOIS*	59-83	L	363	(16) Kate Lawler	(7) Jen Steffens
1/27/96	BRADLEY*	63-75	L	216	(17) Kate Lawler	(6) Kate Lawler, Karen Fenske, Jen Steffens
2/1/96	at SW Missouri State*	63-75	L	5,989	(23) Erin Fox	(7) Kate Lawler
2/3/96	at Wichita State*	76-82	L	425	(16) Mary Koch	(11) Jen Steffens
2/8/96	DRAKE*	91-88	W	392	(20) Erin Fox	(6) Kate Lawler
2/10/96	CREIGHTON*	78-76	W	412	(19) Kate Lawler, Jen Steffens, Erin Fox	(9) Jen Steffens
2/15/96	at Evansville*	79-77	W(ot)	225	(28) Erin Fox	(8) Kate Lawler
2/17/96	at Southern Illinois*	54-84	L	698	(15) Mary Koch	(7) Mary Koch
2/20/96	at Drake*	67-77	L	1,844	(13) Kate Lawler	(7) Kate Lawler
2/24/96	at Bradley*	87-82	W(ot)	403	(24) Kate Lawler	(9) Kelley Westhoff
2/28/96	ILLINOIS STATE*	69-75	L	286	(15) Erin Fox	(7) Erin Fox
3/2/96	INDIANA STATE*	76-67	W	375	(25) Kate Lawler	(9) Kate Lawler
3/7/96	vs. SW Missouri State**	67-83	L		(17) Erin Fox	(5) Shannan Kadner, Jen Steffens, Erin Fox, Carrie Jaspers

Dial Soap Classic (Lawrence, Kansas)

* Missouri Valley Conference game

** Missouri Valley Conference Tournament game

1995-96 Individual Highs / Team High-Low Analysis

Individual Highs

Northern Iowa

Points:	28, Erin Fox vs. Evansville
FGs Made:	9, Shannan Kadner vs. St. Joseph's, Iowa St. 9, Kate Lawler vs. Indiana State
FGs Attempted:	23, Erin Fox vs. Illinois State
FG Percentage:	.700 (7-10), Erin Fox vs. Evansville
3-pt. FGs Made:	3, six players tied
3-pt. FGs Att.:	12, Karen Fenske vs. Kansas
3-pt. FG Per.:	.600 (3-5), Erin Fox vs. Southwest Missouri St. .600 (3-5), Mary Koch vs. Wichita State
FTs Made:	12, Erin Fox vs. Evansville, Bradley
FTs Attempted:	15, Erin Fox vs. Evansville
FT Percentage:	1.000 (8-8), Kate Lawler vs. SW Missouri St. 1.000 (6-6), Shannan Kadner vs. Buffalo 1.000 (6-6), Kate Lawler vs. Indiana State 1.000 (6-6), Erin Fox vs. SW Missouri State
Rebounds:	13, Kate Lawler vs. Evansville
Assists:	13, Kelley Westhoff vs. Bradley
Turnovers:	10, Kelley Westhoff vs. Bradley
Blocked Shots:	4, Carrie Jaspers vs. Drake
Steals:	7, Kelley Westhoff vs. Illinois State



Senior **Kelley Westhoff** set records for assists in game (13) and in a season (155) during the 1995-96 campaign.

Team High/Low Analysis

Northern Iowa

	High	Low
Points (first half):	46 vs. Drake	21 vs. SW Missouri State
Points (second half):	47 vs. Creighton	19 vs. Southern Illinois
Total Points:	91 vs. Drake	54 vs. Southern Illinois
Field Goals Made:	33 vs. Drake	14 vs. Southern Illinois
Field Goals Attempted:	76 vs. Minnesota	48 vs. St. Joseph's (Pa.)
Field Goal Percentage:	.550 vs. Drake	.280 vs. Southern Illinois
3-pt. Field Goals Made:	9 vs. Missouri-K.C.	2 vs. Indiana State
3-pt. Field Goals Att.:	30 vs. Minnesota	8 vs. Buffalo/Indiana St.
3-pt. Field Goal Per.:	.500 vs. Creighton	.125 vs. Bradley
Free Throws Made:	25 vs. Bradley	6 vs. Southern Illinois
Free Throws Attempted:	38 vs. Drake	12 vs. Bradley
Free Throw Percentage:	.909 vs. Drake	.520 vs. Evansville
Offensive Rebounds:	22 vs. Evansville	6 vs. Southern Illinois
Defensive Rebounds:	38 vs. Evansville	15 vs. SW Missouri State
Total Rebounds:	60 vs. Evansville	29 vs. Iowa State
Assists:	21 vs. Bradley	2 vs. Southern Illinois
Blocked Shots:	5 vs. Drake/Creighton	0 vs. Wichita State
Steals:	16 vs. SW Missouri State	2 vs. Drake
Turnovers:	28 vs. Southern Illinois	11 vs. Buffalo/Indiana St.
Personal Fouls:	35 vs. Drake	18 vs. Wichita St./Bradley

Opponents

High	Low
53 by Iowa State	23 by Missouri-K.C.
53 by Wichita State	21 by St. Joseph's
96 by Iowa State	47 by Missouri-K.C.
38 by Kansas	11 by Missouri-K.C.
72 by Bradley	50 by Missouri-K.C.
.629 by Iowa State	.220 by Missouri-K.C.
7 by Iowa State	2 by SW Missouri St.
27 by Missouri-K.C.	6 by three teams
.714 by Wisconsin	.176 by Creighton
40 by Wisconsin	10 by Indiana State
57 by Wisconsin	16 by Indiana State
.833 by Creighton	.500 by Illinois State
26 by Minnesota	5 by Illinois State
42 by Buffalo	20 by Drake
60 by Minnesota	31 by Illinois State
26 by Iowa State	6 by Evansville
11 by Bradley	0 by St. Joseph's
18 by Evansville	7 by Creighton
29 by Illinois State	10 by SW Missouri St.
30 by Drake	15 by Drake

A commitment to excellence, both in the classroom and athletic arena, has been a trademark of the Missouri Valley Conference since its inception in the winter of 1907. Built firmly on a solid foundation, the Missouri Valley Conference has made great strides and streamlined its resources and skills to become one of the nation's most progressive athletic conferences.

Athletic accomplishments on the men's side include four national basketball championships, 17 trips to the NCAA Final Four and a 1989 national baseball championship.

Obviously, the inclusion of women's programs under the Missouri Valley banner – the oldest athletic conference west of the Mississippi River – has provided an immediate boost. The Gateway Collegiate Athletic Conference, which began in 1982, merged with the Missouri Valley Conference and was unveiled as part of the new MVC on July 1, 1992.

The St. Louis-based Missouri Valley Conference began its first tradition long ago. Initiated as a basketball conference in 1907, the MVC has produced many individual and team national champions in basketball and other sports.

Seeds for the creation of the conference were planted by eight administrators representing five institutions, who gathered at the Midland Hotel in Kansas City, Missouri, on January 12, 1907. The five schools which formed the Missouri Valley Intercollegiate Athletic Association were Washington University of St. Louis, and the state universities of Iowa, Kansas, Missouri and Nebraska. Two months after the initial meeting, two more institutions – Drake University and Iowa State College – were admitted to the league.

In the fall of 1907, basketball became the first competitive sport. Today, the Missouri Valley Conference sponsors the following sports: baseball, men's and women's basketball, men's and women's cross country and track (indoor and outdoor), men's and women's golf, men's and women's soccer, softball, men's and women's swimming, men's and women's tennis and women's volleyball.

MVC student-athletes and coaches have become household names during the conference's illustrious history, both during their collegiate careers and, for some, professional careers which have followed stardom in the Missouri Valley Conference.

Individual basketball greats such as Antoine Carr, Hersey Hawkins, Benoit Benjamin, Ashraf Amara and Chris Carr are still active on NBA rosters, while past stars such as Larry Bird, Oscar Robertson, Chet Walker, Wes Unseld, Paul Silas and many others are still to be found in the Valley's record books.

Some 31 institutions in 13 states have at one time or another been a part of what is now the Missouri Valley Conference. Membership has stabilized in the past decade, and now a league that has survived in what has been a volatile environment for the past few years continues its evolution with women's athletics maintaining its ascent.

Current conference members include Bradley University, Creighton University, Drake University, the University of Evansville, Illinois State University, Indiana State University, the University of Northern Iowa, Southern Illinois University, Southwest Missouri State University and Wichita State University.

Doug Elgin is in his ninth year as MVC commissioner. A 1973 graduate of Lafayette College, Elgin previously served as assistant commissioner at the Sun Belt Conference for five years after three years as the University of Virginia's sports information director. A native of Hagerstown, Maryland, Elgin received his master's from Ohio University in 1975.



Missouri Valley Conference

1000 St. Louis Union Station, Suite 333

St. Louis, MO 63101

Phone: (314) 421-0339

Fax: (314) 421-3503

Scoreboard: (314) 997-9877

Bulletin Board: (314) 421-0444

Internet Address: <http://www.mvc.org>

J. Douglas Elgin, *Commissioner*

Patty Viverito, *Senior Associate Commissioner*

Joe Mitch, *Associate Commissioner*

Jack Watkins, *Assistant Commissioner*

Mike Kern, *Assistant Commissioner - Info Services*

Dan Butterly, *Director of Marketing*

Helen Huegel, *Assistant to the Commissioner*

Jan Moore, *Secretary/Receptionist*

Melody Yount, *Media Relations Assistant*

Lainen Schmidt, *Marketing Assistant*

◆ **Bradley University** ◆

◆ **Creighton University** ◆

◆ **Drake University** ◆

◆ **University of Evansville** ◆

◆ **Illinois State University** ◆

◆ **Indiana State University** ◆

◆ **University of Northern Iowa** ◆

◆ **Southern Illinois University** ◆

◆ **Southwest Missouri State University** ◆

◆ **Wichita State University** ◆

1995-96 MVC Final Standings / All-Conference Teams

1995-96 MVC Final Standings

	-MVC-			-Overall-					
	W	L	Pct.	W	L	Pct.	Home	Away	Neutral
Southwest Missouri State	16	2	.889	25	5	.833	13-0	8-3	4-2
Southern Illinois	15	3	.833	18	10	.643	9-3	8-6	1-1
Illinois State	14	4	.778	19	13	.594	10-2	6-7	3-4
Creighton	10	8	.556	16	13	.552	9-4	7-9	0-0
Drake	10	8	.556	15	13	.536	7-5	7-7	1-1
Bradley	7	11	.389	12	15	.444	6-5	4-9	2-1
Wichita State	7	11	.389	8	20	.286	5-7	3-10	0-3
Northern Iowa	6	12	.333	7	20	.259	5-7	2-11	0-2
Indiana State	3	15	.167	7	19	.269	6-7	1-11	0-1
Evansville	2	16	.111	3	23	.115	3-10	0-12	0-1

1996 State Farm MVC Tournament Results

First Round (Thursday, March 7, 1996):

#2 Southern Illinois 83, #7 Wichita State 65
 #3 Illinois State 80, #6 Bradley 75 (ot)
 #1 SW Missouri State 83, #8 Northern Iowa 67
 #4 Creighton 70, #5 Drake 68

Semifinals (Friday, March 8, 1996):

Illinois State 64, Southern Illinois 59
 SW Missouri State 66, Creighton 54
Championship (Sat., March 9, 1996):
 SW Missouri State 59, Illinois State 56

1995-96 Missouri Valley Conference Honors

All-Conference Team

LaTanya Davis, *Southwest Missouri State*
 Kim Evans, *Wichita State*
 Nikki Gilmore, *Southern Illinois*
 Kasia McClendon, *Southern Illinois*
 Roshonda Reed, *Southwest Missouri State*
 Holly Sivesind, *Creighton*
 Tammy Van Oppen, *Bradley*
 Tricia Wakely, *Drake*
 Melanie Ward, *Illinois State*
 Carrie Welle, *Creighton*

Honorable Mention Selections

Lisa Davies, *Southwest Missouri State*
 Livia Hester, *Indiana State*
 Krissy Holden, *Indiana State*
 Kiersten Miller, *Drake*
 Missy Miller, *Creighton*

All-Newcomer Team

Jennifer Goetz, *Indiana State*
 Jessie McVay, *Southwest Missouri State*
 Roshonda Reed, *Southwest Missouri State*
 Jenny Schmidt, *Illinois State*
 Tammy Van Oppen, *Bradley*

All-Defensive Team

Leslie Budak, *Creighton*
 Lisa Davies, *Southwest Missouri State*
 LaTanya Davis, *SW Missouri State*
 Kasia McClendon, *Southern Illinois*
 Kay Schroeder, *Illinois State*

Player of the Year: Tricia Wakely, *Drake*

Newcomer of the Year: Roshonda Reed, *Southwest Missouri State*

Freshman of the Year: Roshonda Reed, *Southwest Missouri State*

Defensive Player of the Year: Kasia McClendon, *Southern Illinois*

'Rawlings' Coach of the Year: Jill Hutchison, *Illinois State*

'State Farm' MVC Tournament MVP: LaTanya Davis, *Southwest Missouri State*

1996 MVC Academic All-Conference Team

First Team:

Deana Alexander, *Wichita State*
 Lisa Davies, *Southwest Missouri State*
 Tricia Wakely, *Drake*
 Melanie Ward, *Illinois State*
 Carrie Welle, *Creighton*

Second Team:

Krissy Holden, *Indiana State*
 Mary Jane Johnson, *Illinois State*
 Kiersten Miller, *Drake*
 Deha Peyton, *Drake*
 Holly Sivesind, *Creighton*
 Valarie Trame, *Illinois State*

Honorable Mention:

Jette Atkinson, *Indiana State*
 Leslie Budak, *Creighton*
 Karen Fenske, *Northern Iowa*
 Stacy Griffin, *Illinois State*
 Beth Hasheider, *Southern Illinois*
 Heather Horner, *Creighton*
 Missy Lange, *Drake*
 Kate Lawler, *Northern Iowa*
 Kristi McCullough, *Creighton*
 Jill Sajevec, *Evansville*
 Kay Schroeder, *Illinois State*
 Suzanne Smith, *Evansville*
 Courtney Spillers, *Bradley*
 Jen Steffens, *Northern Iowa*
 Natasha Weddle, *Evansville*
 Kelley Westhoff, *Northern Iowa*
 Cristen Wuebben, *Creighton*

1996 MVC Players of the Week

11/27 Tricia Wakely, *Drake*
 12/4 Kiersten Miller, *Drake*
 12/11 Tasha McDowell, *SW Missouri St.*
 12/18 Melanie Ward, *Illinois State*
 12/26 Krissy Holden, *Indiana State*
 1/3 Kiersten Miller, *Drake*
 1/8 Kasia McClendon, *Southern Ill.*
 1/15 Roshonda Reed, *SW Missouri St.*
 1/22 Melanie Ward, *Illinois State*
 1/29 Tammy Van Oppen, *Bradley*
 2/5 Kasia McClendon, *Southern Ill.*
 2/12 Erin Fox, *Northern Iowa*
 2/19 Tricia Wakely, *Drake*
 2/26 Kim Evans, *Wichita State*
 3/4 Valarie Trame, *Illinois State*



This is UNI

The University of Northern Iowa

The University of Northern Iowa's academic reputation again has proven a key factor in landing a spot as the only public institution in *U.S. News and World Report's* top 15 regional universities in the Midwest for 1996.

UNI's 11th-place ranking is two places higher than last year's rating. This marks the second year in a row that UNI was the only

"Where Great Teaching makes the difference"

public university ranked in the top 15, which are chosen from more than 100 public and private institutions in the region.

UNI received a "1" rating on academic reputation, the highest of any of the top 15 universities in the Midwest region. That rating consistently has improved over the past four years, from 26 in 1993, 20 in 1994 and 13 in 1995.

The magazine also named UNI the Midwest's most efficient regional university and first in "best value".

This marks the fifth time in the past six years that UNI has been cited by the magazine's "America's Best Colleges" issue in such categories as overall "best", "best buy", "up and coming" and "most efficient".

UNI emphasizes outstanding undergraduate education, with complimentary graduate programs at the master's, specialist's and doctoral levels. Building on its historic strength in teacher education, the University has developed a number of outstanding programs in its various Colleges. UNI also participates in the bachelor of liberal studies program offered by the Regents Universities, and its Division of Continuing Education and Special Programs sponsors classes off-campus in centers throughout the state. Enrollment on its 860-acre campus stands at about 13,000 students from every county in Iowa, 40 states and 48 foreign countries.

UNI's heritage and philosophy place great value on providing a student-centered educational experience. The University nurtures a premiere learning environment - it is small enough to offer its students individualized attention, yet large enough to provide a variety of resources and opportunities, as well as distinguished faculty. The University prides itself on being a great teaching university, and most courses are taught by full-time faculty members (over



600) who are committed to helping students grow intellectually and personally.

UNI was founded in 1876 as the Iowa State Normal School. In 1909, it became Iowa State Teachers College. In 1961, the name was changed to State College of Iowa, and in 1967, the Iowa Legislature acted to change the status of the institution to that of a university under its present title.

While maintaining its primary emphasis on teacher education, the University has continued its metamorphosis toward a multi-purpose institution, with nationally acclaimed programs in many disciplines. UNI's accounting program continues to be ranked among the best in the nation. UNI student groups ranging from chemistry to conservation to public relations have been recognized by their respective national groups for the excellence of their programs.

UNI's outreach also extends to the Iowa business community through programs of the External Service Division of the College of Business Administration, including the Institute for Decision Making, Small Business Development Center, Small Business Institute, Management & Professional Development Center, Market Development Program and Industrial Site Location Program.

UNI offers a wide variety of cultural programs, lectures and conferences. The Continuing Education division, often in conjunction with the University's Office of Conference and Visitor Services, also cooperates with business and industry in programs of study and development on the campus.



The UNI-Dome, a unique, multi-purpose athletic facility built in 1976, has gained a reputation as one of the finest collegiate facilities in America. The Dome combines the features of a fieldhouse, football stadium and large auditorium. It contains accommodations for a variety of events such as concerts, exhibitions, trade shows and convocations, in addition to football, basketball, softball, wrestling and track events. It has been the host to the NCAA football playoffs, gymnastics and wrestling championships, high school football and basketball, the Iowa high school football playoffs, and will be the site of the 1997 NCAA national wrestling championships.

The Dome's versatility allows for football and basketball games or track meets to be held on the same day. Underneath the artificial football turf on a synthetic floor area are basketball and tennis courts and an eight-lane, 220-yard oval running track.

"There's No Place Like Dome"

The turf was replaced four years ago with a new AstroTurf manufactured by Balsam Corporation, the same material that lasted 16 years prior to the installation of the new surface. It's a premier surface utilized by every Dome facility in North America with the exception of one and offers the best durability and playability of any material on the market.

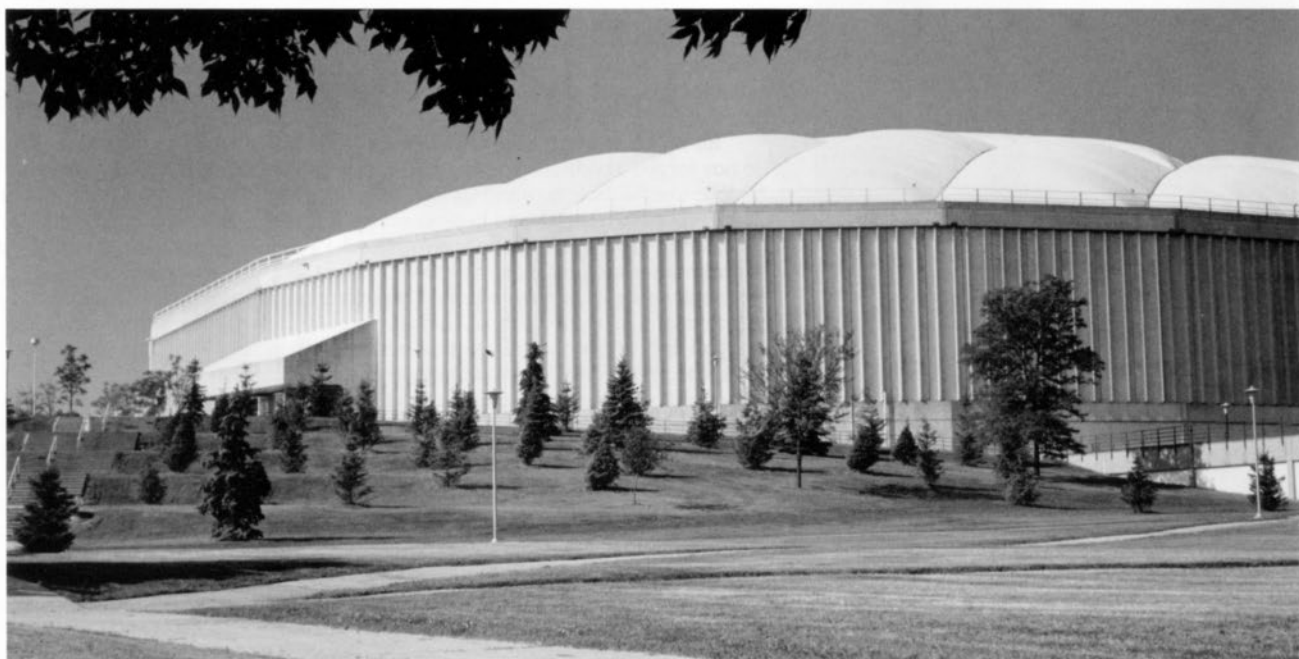
Approximately 16,400 spectators can be seated for football games and track meets and, although normal capacity is 10,000 for basketball, seating can be expanded to over 20,000. For stage production such as concerts, total capacity can reach 25,000.



Training Facilities



Weight Room



UNI-Dome



Dr. Robert Koob

University President

Robert Koob, a Northern Iowa alumnus, returned to his alma mater in August, 1995 as its eighth president. A 1962 graduate of what was then the State College of Iowa, Koob was named president July 1, 1995, by the Iowa State Board of Regents.

Koob had been a senior vice president and vice president for academic affairs at California Polytechnic State University at San Luis Obispo, CA, since 1990.

Prior to his position at Cal Poly, the 53-year old Koob was vice president of academic affairs at North Dakota State from 1985-90 and served a one-year term as interim president from 1987-88.

At Cal Poly, Koob was director and chair of the Cal Poly Foundation and served on a number of CSU system committees, including the CSU Commission on Telecommunications Infrastructure.

He began his teaching career at North Dakota State in 1967 as an assistant professor of chemistry in 1972. He served that institution in several capacities before assuming the vice presidency. He was chair of the chemistry department for six years, and acting chair of the physics department one year, as well as dean of the College of Science and Mathematics from 1981-84.

Koob graduated from State College of Iowa with a bachelor's in chemistry and earned his doctorate in chemistry from Kansas in 1967. He and his wife, Yvonne, have seven grown children.

"It's an honor for me, as a UNI graduate, to return as president," he said. "I can't imagine anyone being more honored in the State of Iowa."



Christopher Ritrievi

Director of Athletics

Christopher Ritrievi is in his fifth year as Northern Iowa Director of Athletics. Since the day he joined the department, he has worked to develop a competitive Division I athletic program at UNI.

A former Division I athlete himself, Ritrievi earned three varsity letters in wrestling at Princeton University, where he received a bachelor's degree in economics in 1979. He earned a master's in business administration from Lehigh University in 1983.

His career in intercollegiate athletics started as a graduate assistant at Lehigh. He has served in administrative and coaching positions at the Eastern College Athletic Conference, Bowling Green State, Princeton, University of Pennsylvania and Stanford, where he had been associate athletic director prior to coming to UNI.

During his UNI tenure, he has reorganized the management of the athletic department to make it more effective and has set priorities to increase the competitiveness of Panther teams. Emphasizing increased operating budgets for all sports and increased scholarships for women's sports, the department has enjoyed its best performances since joining Division I in 1980. Since 1992, UNI has celebrated Missouri Valley Conference championships in men's cross country, indoor and outdoor track and field and volleyball. Football has won four Gateway Conference titles and has enjoyed the highest attendance, including six of seven UNI-Dome football sellouts. In 1995-96, six sports enjoyed their highest conference finishes since joining the MVC in 1991.

Ritrievi served as vice president for the MVC athletic directors in 1994-95 and chairs the MVC long-range planning and Gateway Conference finance committees. He has also been named president of the Division I-AA Football Athletic Directors Association for the 1996-97 year.

The 39-year-old native of Levittown, PA, is married to the former Stephanie Homeyer, who grew up in Wellsburg, IA.

Athletic Staff Directory

All phone numbers area code (319):

Women's Basketball:

Tony DiCecco, head coach	273-6443
Colleen Heimstead, assistant	273-6338
Tanya Warren, assistant	273-6987
Jenny Nelson, graduate assistant	273-5831

Iradge Ahrabi-Fard, Volleyball (head coach)	273-6480
Terry Allen, Football (head coach)	273-6175
Meredith Bakley, Softball (head coach)	273-2520
Gary Barta, Assistant AD/Development	273-6078
John Bermel, Men's Golf (head coach)	273-8647
Jan Bittner, Volleyball (assistant)	273-6480
Nancy Bowers, Assistant Trainer	273-6476
Don Briggs, Wrestling (head coach)	273-6473
Julie Bright, Business Manager	273-2475
Gene Bruhn, Softball (assistant)	273-2520
Chris Bucknam, Men's Track (head coach)	273-6481
Tony Beuter, Athletic Club	273-2471
Kevin Buisman, Accounts Manager	273-6050
Kay Bukatz, UNI-Dome Secretary	273-6050
Nancy Clark, Men's/Women's Tennis (head coach)	273-5874
Jonathan Cox, Men's Basketball (assistant)	273-6175
Joan Craig, AD Secretary	273-2470
Jim Egli, Assistant AD/Facilities	273-6050
Mark Farley, Football (assistant)	273-6471
Alan Fried, Wrestling (assistant)	273-6341
Michael Garrison, Football (assistant)	273-6470
Ann Brett Gillespie, Marketing & Promotions	273-6994
Joel Greenlee, Wrestling (assistant)	273-6341
Jim Hall, Men's/Women's Swimming (head coach)	273-2503
John "Jersey" Jermier, Associate AD	273-3097
Nancy Justis, Athletic Media Relations (director)	273-6354
Kevin Kane, Athletic Media Relations (assistant)/ Women's Golf (head coach)	273-3642
Bob Kincaid, Academic Adviser	273-6321
Dave Kohrs, Facilities Coordinator	273-2865
Bill Lawson, Men's Track (assistant)	273-6481
Eldon Miller, Men's Basketball (head coach)	
Ken Misfeldt, Baseball (assistant)	273-6323
Dick Moseley, Football (assistant)	273-6474
Jeff Noble, Diving	273-2406
Terry Noonan, Head Trainer	273-6369
Steve Nurse, Equipment Manager	273-2459
Bobbi Petersen, Volleyball (assistant)	273-6480
Chris Ritnivi, Athletic Director	273-2470
Bill Salmon, Football (assistant)	273-6725
Dave Schrage, Baseball (head coach)	273-6323
Lea Ann Shaddox, Women's Track (head coach)	273-6157
Terri Soldan, Women's Track (assistant)	273-6157
Ardell Wiegandt, Football (assistant)	273-6791
Del Wight, Football (assistant)	273-6436
Dr. Jack Wilkinson, NCAA Faculty Representative	273-2515
Dr. Sandra Williamson, Associate AD	273-6033
Paul Zakowski, Ticket Manager	273-6131



Gary Barta
Assistant A.D./Development



Julie Bright
Business Manager



Jim Egli
Assistant A.D./Facilities



John "Jersey" Jermier
Associate Athletic Director



Nancy Justis
Athletic Media Relations, Director



Dr. Jack Wilkinson
NCAA Faculty Representative



Dr. Sandra Williamson
Associate Athletic Director



Where can you find beautiful tree-lined bike trails, modern theatre, and rich history all in one spot? Where do annual fun filled events abound? Take the scenic route to Cedar Falls and find out exactly what you've been missing in this Northeast Iowa town.

Cedar Falls is home to the University of Northern Iowa and the UNI-Dome. Sports fans come and enjoy hard-hitting college football as the Panthers do battle in the Dome for another successful season. Put your hands together for quality theatrical performances at the Strayer-Wood Theatre also located on the picturesque campus. Catch dramatic and comedic performances performed in the plush theatre complex.

History abounds in Cedar Falls' faithfully restored older homes. Take a turn through the Victorian Home and the Carriage House Museum in Cedar Falls' historic district. The Italian Revival style Victorian Home was built in 1863 and now houses a collection of beautiful antique furniture and gowns.

Grab your bike, feet, and roller blades and head out to the Cedar Valley Nature Trail, stretching from Waterloo to Cedar Rapids. The paved trail offers fun, sun and scenery to all ages. The trail sponsors free weekends and an annual concert series in Buzzards Quarry where you can enjoy a picnic lunch and live music.

Take part in one of the numerous annual events that take place in Cedar Falls. Every year over 200,000 people migrate into town for the three-day Sturgis

Falls Celebration the last full weekend in June. The weekend is filled with Dixieland Jazz, old time rock-and-roll, outdoor food vendors and countless other fun activities.

Art lovers look no further than the annual College Hill Arts Festival held the third Friday and Saturday of July. Purchase art from juried artists representing many states. The performing arts are presented throughout the festival which is located on the UNI campus.

Mark the week before Labor Day for the Old Time Power Show located at Antique Acres. The Show highlights antique farm machinery and takes you back into our rich Iowan farm past with antique steam and tractor threshing, home cooked meals and live music.

Cedar Falls ... We've got it all! Attractions and annual events are plentiful in the land William Sturgis first settled. Quality hotels and bed and breakfasts are waiting to accommodate you. Whether your stay lasts a few days – or longer – Cedar Falls is the place to be! Cedar Falls is a dynamic university community whose citizens are characterized by pride, warmth, and a full

measure of Iowa hospitality.

Our city offers many educational, cultural, and recreational activities. Students find the Cedar Falls environment contributes to their collegiate experience, and travelers, tourists and other visitors appreciate the friendly restaurants, accommodations, and services.

Cedar Falls, with a population of about 36,400, has a secure, small-town atmosphere with all the advantages of a much larger city. In combination with neighboring Waterloo, a population of more than 100,000 forms a culturally rich metropolitan area.

Cedar Falls -- "We've Got it All"



1996-97 Opponents

1996-97 Opponents

Nevada

Nevada Invitational
Fri., Nov. 22 - 8:00 p.m. - Reno, NV



Head Coach
Ada Gee



KaTrina Crenshaw

Quick Facts:

Location: Reno, NV 89577
 Enrollment: 12,500
 Founded: 1874
 Nickname: Wolf Pack
 Colors: Silver and Blue
 Arena (capacity): Lawlor Events Center (11,200)
 Conference: Big West
 President: Dr. Joseph Crowley
 Athletic Director: Chris Ault

Basketball Facts:

Head Coach: Ada Gee
 Alma Mater: Colorado College, 1983
 Record at school (yrs.): 22-59 (3 yrs.)
 Overall record (yrs.): 24-60 (3 yrs.)*
 * 2-1 as interim coach at Vanderbilt
 Assistant Coaches: Stacy McIntyre,
 Jade Huntington
 1995-96 Overall Record: 9-17
 1995-96 Conf. Record/Finish: 6-12/7th
 Letterwinners returning/lost: 9/1
 Starters returning/lost: 5/0
 Series vs. UNI: First meeting

Sports Information:

WBB Contact: Jason Houston
 Office phone: (702) 784-1337
 Home phone: (702) 626-3609
 Fax: (702) 784-4386
 Press row: (702) 784-4404

Top returnees:	ppg	rpq
KaTrina Crenshaw (6-0, G, Jr.)	15.9	8.6
Shawna Franceschini (5-8, G, Jr.)	11.8	3.3

Top newcomers:	ppg	rpq
Jasmyn Huntington (5-9, G, Fr.)		
Tameka Caldwell (5-6, G, Jr.)		

St. Joseph's

Possible Opponent - Nevada Inv.
Sat., Nov. 23 - TBA - Reno, NV



Head Coach
Stephanie Gaitley



Megan Compain

Quick Facts:

Location: Philadelphia, PA 19131
 Enrollment: 2,700
 Founded: 1851
 Nickname: Hawks
 Colors: Crimson and Gray
 Arena (capacity): Alumni Memorial Fieldhouse (3,200)
 Conference: Atlantic 10
 President: Rev. Nicholas Rashford, S.J.
 Athletic Director: Don DiJulia

Basketball Facts:

Head Coach: Stephanie Gaitley
 Alma Mater: Villanova, 1982
 Record at school (yrs.): 93-50 (5 yrs.)
 Overall record (yrs.): 209-113 (11 yrs.)
 Assistant Coaches: Frank Gaitley, Reggi Grennan, Julie Scherbenske
 1995-96 Overall Record: 16-12
 1995-96 Conf. Record/Finish: 9-7/3rd
 Letterwinners returning/lost: 9/1
 Starters returning/lost: 4/1
 Series vs. UNI: St. Joseph's leads 1-0

Sports Information:

WBB Contact: Chris Sodl
 Office phone: (610) 660-1702
 Home phone: (610) 660-0648
 Fax: (610) 660-1724
 Press row: (610) 660-2599

Top returnees:	ppg	rpq
Megan Compain (5-11, F, Sr.)	15.1	5.1
Amy Facer (5-9, G, Sr.)	11.2	4.4
Maureen Costello (6-1, F, Jr.)	10.5	8.0

Top newcomers:	ppg	rpq
Barbora Kuklova (6-5, C, Fr.)		
Jana Lichnerova (6-4, C, Fr.)		

Weber State

Possible Opponent - Nevada Inv.
Sat., Nov. 23 - TBA - Reno, NV



Head Coach
Carla Taylor



Jodi Wimmer

Quick Facts:

Location: Ogden, UT 84408
 Enrollment: 14,000
 Founded: 1889
 Nickname: Wildcats
 Colors: Purple and White
 Arena (capacity): Dee Events Center (11,500)
 Conference: Big Sky
 President: Dr. Paul H. Thompson
 Athletic Director: Dutch Belnap

Basketball Facts:

Head Coach: Carla Taylor
 Alma Mater: Weber State, 1984
 Record at school (yrs.): 96-120 (8 yrs.)
 Overall record (yrs.): 96-120 (8 yrs.)
 Assistant Coaches: Chris Haines, Lynne Andrew
 1995-96 Overall Record: 17-12
 1995-96 Conf. Record/Finish: 9-5/t-2nd
 Letterwinners returning/lost: 7/5
 Starters returning/lost: 2/3
 Series vs. UNI: First meeting

Sports Information:

WBB Contact: Nan Holyoak
 Office phone: (801) 626-6012
 Home phone: (801) 479-0687
 Fax: (801) 626-6490
 Press row: (801) 626-6588

Top returnees:	ppg	rpq
Shelley Berg (6-0, F, Sr.)	8.8	9.4
Teresa Martin (5-4, G, Sr.)	4.2	2.3
Jodi Wimmer (6-0, F, Sr.)	5.9	4.2

Top newcomers:	ppg	rpq
Taryn Stringam (5-11, G/F, Fr.)		
Nina Topp (5-5, G, Fr.)		

Buffalo

Tues., Nov. 26 - 7:05 p.m.

UNI-Dome



Head Coach
Sal Buscaglia



Catherine Jacob

Quick Facts:

Location: Buffalo, NY 14260
Enrollment: 27,000
Founded: 1846
Nickname: Royals
Colors: Royal Blue and White
Arena (capacity): Alumni Arena (8,464)
Conference: Mid-Continent
President: William R. Greiner
Athletic Director: Nelson E. Townsend

Basketball Facts:

Head Coach: Sal Buscaglia
Alma Mater: Canisius, 1976
Record at school (yrs.): 115-55 (6 yrs.)
Overall record (yrs.): 364-117 (19 yrs.)
Assistant Coaches: Denise Becher,
Thurman Bronaugh
1995-96 Overall Record: 23-8
1995-96 Conf. Record/Finish: 13-5/2nd
Letterwinners returning/lost: 9/3
Starters returning/lost: 4/1
Series vs. UNI: Buffalo leads 1-0

Sports Information:

WBB Contact: Paul Vecchio
Office phone: (716) 645-6311
Home phone: (716) 941-0291
Fax: (716) 645-6041
Press row: (716) 645-3360

Top returnees:	ppg	rpg
Brenna Doty (5-7, G, Sr.)	16.3	3.7
Charissa Gardner (5-10, F, Jr.)	11.3	4.8
Catherine Jacob (5-5, G, So.)	7.1	3.1

Top newcomers:

LaToya Crumpton (5-11, F, Jr.)
Havilah Cunningham (5-10, F, Fr.)

Niagara

Fri., Nov. 29 - 7:05 p.m.

UNI-Dome



Head Coach
Bill Agronin



Shannon Graham

Quick Facts:

Location: Niagara, NY 14109
Enrollment: 2,865
Founded: 1856
Nickname: Purple Eagles
Colors: Purple, White and Gold
Arena (capacity): Gallagher Center (3,200)
Conference: Metro Atlantic Athletic
President: Rev. Paul L. Golden, C.M.
Athletic Director: Mike Jankowski

Basketball Facts:

Head Coach: Bill Agronin
Alma Mater: Jacksonville, 1970
Record at school (yrs.): 32-22 (2 yrs.)
Overall record (yrs.): 32-22 (2 yrs.)
Assistant Coaches: Pete Dickinson,
Christie McGee, Jen Pasternak
1995-96 Overall Record: 12-15
1995-96 Conf. Record/Finish: 7-7/4th
Letterwinners returning/lost: 6/3
Starters returning/lost: 3/2
Series vs. UNI: Niagara leads 1-0

Sports Information:

WBB Contact: Michael Henesey
Office phone: (716) 286-8586
Home phone: (716) 285-7995
Fax: (716) 286-8581

Top returnees:	ppg	rpg
Shannon Graham (6-0, F/C, Jr.)	12.9	6.9
Jessica Glazier (5-4, G, Jr.)	8.2	3.2
Kristie Bouck (6-0, F/C, So.)	7.8	5.1

Top newcomers:

Jillian Kraft (5-10, G, Fr.)
Douglassie Sieber (5-6, G, Fr.)
Sheryl Klick (5-4, G, Fr.)

Wisconsin

Tues., Dec. 3 - 7:00 p.m.

Madison, WI



Head Coach
Jane Albright-Dieterle



Keisha Anderson

Quick Facts:

Location: Madison, WI 53711
Enrollment: 40,005
Founded: 1848
Nickname: Badgers
Colors: Cardinal and White
Arena (capacity): UW Fieldhouse (11,500)
Conference: Big Ten
Chancellor: David W. Ward
Athletic Director: Pat Richter

Basketball Facts:

Head Coach: Jane Albright-Dieterle
Alma Mater: Appalachian State, '77
Record at school (yrs.): 41-17 (2 yrs.)
Overall record (yrs.): 229-127 (12 yrs.)
Assistant Coaches: Sue Semrau, Dawn
Bryant Crim, Angelia Y. Johnson
1995-96 Overall Record: 21-8
1995-96 Conf. Record/Finish: 13-3/3rd
Letterwinners returning/lost: 11/3
Starters returning/lost: 4/1
Series vs. UNI: Wisconsin leads 4-0

Sports Information:

WBB Contact: Tamara J. Flarup
Office phone: (608) 263-5502
Home phone: (608) 238-3650
Fax: (608) 265-8051
Press row: (608) 263-2249

Top returnees:	ppg	rpg
Katie Voigt (6-1, G, Sr.)	14.4	4.0
Ann Klapperich (6-2, F, Jr.)	13.1	5.5
Keisha Anderson (5-7, G, Sr.)	12.7	3.9

Top newcomers:

Kelley Paulus (5-11, G, Fr.)
Emily Richter (5-7, G, Jr.)

1996-97 Opponents

Iowa State

Sun., Dec. 8 - 3:05 p.m.

UNI-Dome



Head Coach
Bill Fennelly



Kim Martin

Quick Facts:

Location: Ames, IA 50011

Enrollment: 24,728

Founded: 1858

Nickname: Cyclones

Colors: Cardinal and Gold

Arena (capacity): James H. Hilton
Coliseum (14,020)

Conference: Big Twelve

President: Dr. Martin C. Jischke

Athletic Director: Gene Smith

Basketball Facts:

Head Coach: Bill Fennelly

Alma Mater: Wm. Penn College, 1979

Record at school (yrs.): 17-10 (1 yr.)

Overall record (yrs.): 183-63 (8 yrs.)

Assistant Coaches: Katie Abrahamson,
Brenda Frese

1995-96 Overall Record: 17-10

1995-96 Conf. Record/Finish: 5-9/6th

Letterwinners returning/lost: 10/0

Starters returning/lost: 5/0

Series vs. UNI: Iowa State leads 18-6

Sports Information:

WBB Contact: Erin Davison

Office phone: (515) 294-5778

Home phone: (515) 232-0177

Fax: (515) 295-0558

Press row: (515) 294-6178 or 296-9968

Top returnees: ppg rpg

Jayne Olson (6-1, F/C, Jr.) 16.6 8.1

Janel Grimm (6-2, F/C, Jr.) 13.1 6.9

Tara Gunderson (5-8, G, Sr.) 13.4 2.6

Top newcomers:

Amanda Bartz (6-0, G, Fr.)

Monica Huelman (6-2, F, Fr.)

Wisconsin-Milwaukee

Sat., Dec. 14 - 2:00 p.m.

Milwaukee, WI



Head Coach
Sandy Botham



Jenny Greger

Quick Facts:

Location: Milwaukee, WI 53201

Enrollment: 22,984

Founded: 1885

Nickname: Panthers

Colors: Black and Gold

Arena (capacity): Klotsche Ctr. (4,000)

Conference: Midwestern Collegiate

Chancellor: Dr. John H. Schroeder

Athletic Director: Bud K. Haidet

Basketball Facts:

Head Coach: Sandy Botham

Alma Mater: Notre Dame, 1988

Record at school (yrs.): First year

Overall record (yrs.): 22-4 (1 yr.)

Assistant Coaches: Sara Liebscher,
Benita Martin

1995-96 Overall Record: 4-22

1995-96 Conf. Record/Finish: 3-13/9th

Letterwinners returning/lost: 8/4

Starters returning/lost: 3/2

Series vs. UNI: UNI leads 5-1

Sports Information:

WBB Contact: Chad Krueger

Office phone: (414) 229-4593

Home phone: (414) 224-9324

Fax: (414) 229-6759

Top returnees: ppg rpg

Jenny Greger (5-6, G, Sr.) 13.8 5.3

Apryl Rodman (6-2, F, Sr.) 11.3 6.2

Top newcomers:

Angie Dalton (5-8, G, Fr.)

Kelly Lubbers (6-1, C, -Fr.)

Jenny Reisenauer (5-11, G, Fr.)

Daryl Schaffeld (5-8, G, Fr.)

Cal. State - Northridge

Sun., Dec. 22 - 3:00 p.m.

Northridge, CA



Head Coach
Michael Abraham



Sherry Ramirez

Quick Facts:

Location: Northridge, CA 91330-8276

Enrollment: 24,000

Founded: 1958

Nickname: Matadors

Colors: Red, White, and Black

Arena (capacity): The Matadome
(1,840)

Conference: Big Sky

President: Dr. Blenda J. Wilson

Athletic Director: Paul A. Bubb

Basketball Facts:

Head Coach: Michael Abraham

Alma Mater: Portland State, 1984

Record at school (yrs.): 5-22 (1 yr.)

Overall record (yrs.): same

Assistant Coaches: Jeanette

Armentano, Lindsay Strothers

1995-96 Overall Record: 5-22

1995-96 Conf. Record/Finish: 1-5/4th

Letterwinners returning/lost: 8/5

Starters returning/lost: 3/2

Series vs. UNI: First meeting

Sports Information:

WBB Contact: Lisa Kwan

Office phone: (818) 677-3243

Home phone: (818) 340-1936

Fax: (818) 677-4762

Press row: (818) 677-4701

Top returnees: ppg rpg

Sherry Ramirez (6-2, C, Jr.) 5.4 4.4

Sarah Hagman (5-9, G, Jr.) 6.4 2.5

Top newcomers:

Jamilah Jones (5-8, G, Fr.)

Maya Muzurovic (6-4, F, Fr.)

Neda Milic (6-1, G, Fr.)

Southern Illinois

Sun., Dec. 29 - 3:05 p.m. - UNI-Dome
Thurs., Feb. 27 - 7:05 p.m. - Carbondale, IL



Head Coach
Cindy Scott



Kasia McClendon

Quick Facts:

Location: Carbondale, IL 62901
Enrollment: 22,400
Founded: 1869
Nickname: Salukis
Colors: Maroon and White
Arena (capacity): SIU Arena (10,014)
Conference: Missouri Valley
President: Ted Sanders
Athletic Director: Jim Hart

Basketball Facts:

Head Coach: Cindy Scott
Alma Mater: Memphis State, 1975
Record at school (yrs.): 364-183 (19 yrs)
Overall record (yrs.): 364-183 (19 yrs)
Assistant Coaches: Julie Beck, Lea Robinson, Kristi Kinne
1995-96 Overall Record: 18-10
1995-96 Conf. Record/Finish: 15-3/2nd
Letterwinners returning/lost: 7/5
Starters returning/lost: 2/3
Series vs. UNI: S. Illinois leads 24-2

Sports Information:

WBB Contact: Bryan McGowan
Office phone: (618) 453-5470
Home phone: (618) 985-3921
Fax: (618) 536-2152
Press row: (618) 453-7600

Top returnees:	ppg	rp
Kasia McClendon (5-5, G, Sr.)	15.2	5.4
Theia Hudson (6-2, C, Jr.)	8.7	5.4
Niki Washington (6-0, F, Sr.)	4.6	2.5

Top newcomers:

Jessie Phillips (5-10, G, So.)
Melaniece Bardley (6-3, C, Fr.)
Meredith Jackson (6-2, G/F, Fr.)

Evansville

Tues., Dec. 31 - 7:05 p.m. - UNI-Dome
Sat., Mar. 1 - 7:05 p.m. - Evansville, IN



Head Coach
Kathi Bennett



Suzanne Smith

Quick Facts:

Location: Evansville, IN 47722
Enrollment: 2,600
Founded: 1854
Nickname: Aces
Colors: Purple and White
Arena (capacity): Roberts Stad. (12,300)
Conference: Missouri Valley
President: Dr. James Vinson
Athletic Director: James Byers

Basketball Facts:

Head Coach: Kathi Bennett
Alma Mater: Wisc.-Green Bay, 1985
Record at school (yrs.): First year
Overall record (yrs.): 173-42 (8 yrs.)
Assistant Coaches: Tricia Betthausen, Heather Donlon, Jenny Sell
1995-96 Overall Record: 3-23
1995-96 Conf. Record/Finish: 2-16/10th
Letterwinners returning/lost: 8/5
Starters returning/lost: 4/1
Series vs. UNI: Series tied 2-2

Sports Information:

WBB Contact: Jay Jameson
Office phone: (812) 479-2350
Home phone: (812) 464-0082
Fax: (812) 479-2199
Press row: (812) 477-7520

Top returnees:	ppg	rp
Jill Sajevic (5-10, F, Jr.)	9.7	5.1
Suzanne Smith (5-7, G, Jr.)	9.1	3.2

Top newcomers:

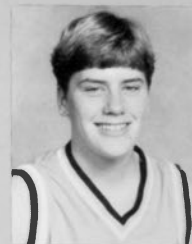
Rita Wilson (5-6, G, Fr.)
Carmen Rohls (6-2, F, Fr.)
Lesley Jeanpierre (6-3, C, Fr.)

Creighton

Fri., Jan. 3 - 7:05 p.m. - Omaha, NE
Thurs., Jan. 30 - 7:05 p.m. - UNI-Dome



Head Coach
Connie Yori



Holly Sivesind

Quick Facts:

Location: Omaha, NE 68178
Enrollment: 6,241
Founded: 1878
Nickname: Lady Jays
Colors: Blue and White
Arena (capacity): Omaha Civic Auditorium (9,481)
Conference: Missouri Valley
President: Rev. Michael Morrison
Athletic Director: Bruce Rasmussen

Basketball Facts:

Head Coach: Connie Yori
Alma Mater: Creighton, 1986
Record at school (yrs.): 77-37 (4 yrs.)
Overall record (yrs.): 102-62 (6 yrs.)
Assistant Coaches: Jim Flanery, Ann Walker
1995-96 Overall Record: 15-13
1995-96 Conf. Record/Finish: 10-8/4th
Letterwinners returning/lost: 7/5
Starters returning/lost: 3/2
Series vs. UNI: Creighton leads 12-2

Sports Information:

WBB Contact: Andy Nemann
Office phone: (402) 280-5544
Home phone: (402) 398-9443
Fax: (402) 280-2495
Press row: (402) 444-4705

Top returnees:	ppg	rp
Carrie Welle (6-1, F, Jr.)	16.5	7.2
Holly Silvesind (5-9, G, Sr.)	15.4	4.3

Top newcomers:

Natalie Kotrc (6-5, C, Fr.)
Corey Sweeney (5-11, G, Fr.)
Megan Williams (5-7, G, Fr.)

1996-97 Opponents

Drake

Sun., Jan. 5 - 2:05 p.m. - Des Moines, IA
Sat., Feb. 1 - 3:35 p.m. - UNI-Dome



Head Coach
Lisa Bluder



Nicole McBean

Quick Facts:

Location: Des Moines, IA 50311
Enrollment: 3,200
Founded: 1881
Nickname: Bulldogs
Colors: Blue and White
Arena (capacity): Knapp Center (7,002)
Conference: Missouri Valley
President: Dr. Michael Ferrari
Athletic Director: Lynn King

Basketball Facts:

Head Coach: Lisa Bluder
Alma Mater: Northern Iowa, 1983
Record at school (yrs.): 96-76 (6 yrs.)
Overall record (yrs.): 265-111 (12 yrs.)
Assistant Coaches: Jan Jensen, Jenni Fitzgerald, Carolyn Hagerty
1995-96 Overall Record: 16-13
1995-96 Conf. Record/Finish: 10-8/t-4th
Letterwinners returning/lost: 6/3
Starters returning/lost: 2/3
Series vs. UNI: Drake leads 32-4

Sports Information:

WBB Contact: Jason Eslinger
Office phone: (515) 271-3740
Home phone: (515) 222-2614
Fax: (515) 271-3015
Press row: (515) 271-4878

Top returnees:	ppg	rpq
Kiersten Miller (5-9, G, Jr.)	16.0	4.5
Missy Lange (6-2, F/C, Sr.)	7.8	5.8

Top newcomers:

Tammi Blackstone (6-4, C, Fr.)
Trish Martin (6-0, F, Fr.)
Haley Sames (6-4, C/F, Fr.)
Megan Wright (6-0, G/F, Fr.)

Southwest Missouri State

Sat., Jan. 11 - 3:05 p.m. - NU High
Sat., Feb. 8 - 2:05 p.m. - Springfield, MO



Head Coach
Cheryl Burnett



Jessie McVay

Quick Facts:

Location: Springfield, MO 65804
Enrollment: 17,441
Founded: 1905
Nickname: Bears
Colors: Maroon and White
Arena (capacity): Hammons Student Center (8,858)
Conference: Missouri Valley
President: Dr. John Keiser
Athletic Director: Bill Rowe

Basketball Facts:

Head Coach: Cheryl Burnett
Alma Mater: Kansas, 1981
Record at school (yrs.): 185-85 (9 yrs.)
Overall record (yrs.): 185-85 (9 yrs.)
Assistant Coaches: Lynnette Robinson, Karen Rapier, Clint Kinnamon
1995-96 Overall Record: 25-5
1995-96 Conf. Record/Finish: 16-2/1st
Letterwinners returning/lost: 6/4
Starters returning/lost: 3/2
Series vs. UNI: SMSU leads 23-5

Sports Information:

WBB Contact: Brad Hainje
Office phone: (417) 836-5402
Home phone: (417) 886-3511
Fax: (417) 836-4868
Press row: (417) 836-4150

Top returnees:	ppg	rpq
Roshonda Reed (6-0, G/F, So.)	12.6	6.7
Jessie McVay (5-9, G, Sr.)	12.0	3.7
Lisa Davies (5-11, F, Jr.)	11.6	6.0

Top newcomers:

Patrice Cleem (6-1, F, Fr.)
Rachel Johnson (6-1, F, Fr.)

Wichita State

Mon., Jan. 13 - 7:05 p.m. - UNI-Dome
Thurs., Feb. 6 - 7:00 p.m. - Wichita, KS



Head Coach
Linda Hargrove



Tottie Shaw

Quick Facts:

Location: Wichita, KS 67260-0018
Enrollment: 14,558
Founded: 1895
Nickname: Shockers
Colors: Black and Yellow
Arena (capacity): Levitt Arena (10,656)
Conference: Missouri Valley
President: Dr. Eugene M. Hughes
Athletic Director: Bill Belknap

Basketball Facts:

Head Coach: Linda Hargrove
Alma Mater: Southwestern, Kan., '75
Record at school (yrs.): 83-110 (7 yrs.)
Overall record (yrs.): 399-222 (24 yrs.)
Assistant Coaches: Jill Killen, Lisa Klaassen, Erica Moore
1995-96 Overall Record: 9-19
1995-96 Conf. Record/Finish: 7-11/t-6th
Letterwinners returning/lost: 9/4
Starters returning/lost: 4/2
Series vs. UNI: Wichita State leads 19-7

Sports Information:

WBB Contact: Ron Burnett
Office phone: (316) 978-3265
Home phone: (316) 945-0350
Fax: (316) 978-3336
Press row: (316) 978-3299

Top returnees:	ppg	rpq
Tottie Shaw (6-1, F, Sr.)	11.5	8.3
Dachia Scroggins (6-3, C, So.)	6.1	3.4
Lea Johnson (5-9, G/F, Sr.)	6.8	4.9
Jodie Gullett (5-6, G, Jr.)	4.4	2.7

Top newcomers:

Dianne L'Ami (5-11, G/F, Jr.)
LaTeesha Hill (5-6, G, Fr.)

Bradley

Sat., Jan. 18 - 7:00 p.m. - Peoria, IL
Sat., Feb. 15 - 3:05 p.m. - UNI-Dome



Head Coach
Donna Freitag



Tammy Van
Oppen

Quick Facts:

Location: Peoria, IL 61625
Enrollment: 6,000
Founded: 1897
Nickname: Lady Braves
Colors: Red and White
Arena (capacity): Robertson Field House (7,003)
Conference: Missouri Valley
President: Dr. John R. Brazil
Athletic Director: Ken Kavanagh

Basketball Facts:

Head Coach: Donna Freitag
Alma Mater: Iowa, 1983
Record at school (yrs.): First season
Overall record (yrs.): First season
Assistant Coaches: Tracy Anderson
Jonelle Polk McCloud
1995-96 Overall Record: 13-14
1995-96 Conf. Record/Finish: 7-11/t-6th
Letterwinners returning/lost: 9/3
Starters returning/lost: 4/1
Series vs. UNI: Bradley leads 22-4

Sports Information:

WBB Contact: Bo Ryan
Office phone: (309) 677-2627
Home phone: (309) 387-6975
Fax: (309) 677-2626
Press row: (309) 677-2635

Top returnees:	ppg	rpg
Tammy Van Oppen (6-1, F, Sr.)	14.3	7.1
Heather Best (6-0, G/F, So.)	12.6	6.4
Krishna Green (6-0, F, Sr.)	11.1	6.0

Top newcomers:

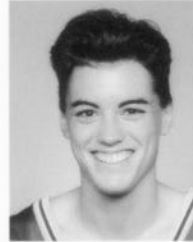
Jennifer Miller (5-11, F, Fr.)
Sara Skutt (5-5, G, Fr.)

Indiana State

Thurs., Jan. 23 - 7:00 p.m. - Terre Haute, IN
Thurs., Feb. 20 - 7:05 p.m. - UNI-Dome



Head Coach
Cheryl Reeve



Georgia Bottoms

Quick Facts:

Location: Terre Haute, IN 47809
Enrollment: 11,484
Founded: 1865
Nickname: Sycamores
Colors: Royal Blue and White
Arena (capacity): Hulman Ctr. (10,200)
Conference: Missouri Valley
President: Dr. John Moore
Athletic Director: Larry Gallo

Basketball Facts:

Head Coach: Cheryl Reeve
Alma Mater: LaSalle, 1988
Record at school (yrs.): 9-17 (1 yr.)
Overall record (yrs.): 9-17 (1 yr.)
Assistant Coaches: Donna Seybold,
Dana Eikenberg
1995-96 Overall Record: 9-17
1995-96 Conf. Record/Finish: 3-15/9th
Letterwinners returning/lost: 8/2
Starters returning/lost: 4/1
Series vs. UNI: Indiana State leads 20-6

Sports Information:

WBB Contact: Jennifer Little
Office phone: (812) 237-4160
Fax: (812) 237-4157
Press row: (812) 237-7656

Top returnees:	ppg	rpg
Krissy Holden (5-3, G, Sr.)	11.5	4.6
Jennifer Goetz (6-0, F, So.)	11.6	7.7
Darci Redenbaugh (5-7, G, Jr.)	11.7	2.8
Georgia Bottoms (5-11, G, Jr.)	injury	

Top newcomers:

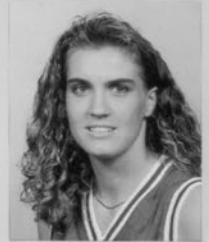
Amy Amstutz (5-10, G, So.)
Jennifer Backer (5-8, G, Fr.)
Autumn Maynard (6-3, C, Fr.)

Illinois State

Sat., Jan. 25 - 2:00 p.m. - Normal, IL
Sat., Feb. 22 - 3:35 p.m. - UNI-Dome



Head Coach
Jill Hutchison



Val Trame

Quick Facts:

Location: Normal, IL 61790
Enrollment: 19,274
Founded: 1857
Nickname: Redbirds
Colors: Red and White
Arena (capacity): Redbird Arena (10,200)
Conference: Missouri Valley
President: Dr. David A. Strand
Athletic Director: Rick Greenspan

Basketball Facts:

Head Coach: Jill Hutchison
Alma Mater: New Mexico, 1967
Record at school (yrs.): 425-276 (25 yrs)
Overall record (yrs.): 425-276 (25 yrs)
Assistant Coaches: Lisa Robinson, Marla Maupin, Cherie Swarthout
1995-96 Overall Record: 19-13
1995-96 Conf. Record/Finish: 14-4/3rd
Letterwinners returning/lost: 8/2
Starters returning/lost: 3/2
Series vs. UNI: Illinois State leads 26-3

Sports Information:

WBB Contact: Tom Lamonica
Office phone: (309) 438-3825
Home phone: (309) 454-1645
Fax: (309) 438-5634
Press row: (309) 438-5950

Top returnees:	ppg	rpg
Mary Jane Owens (5-9, G, Sr.)	7.2	4.4
Jenny Schmidt (5-9, G, So.)	9.8	2.7
Corinne Vossell (5-11, F, Jr.)	6.7	3.3

Top newcomers:

Kendra Box (6-2, C, Fr.)
Mary Bunker (5-9, G, Fr.)
Kristy Crowley (5-9, G, Fr.)

1996-97 Missouri Valley Conference Composite Schedule

November

Monday, November 4
Dream Builders (Ex.) at N. Iowa (7:30)

Tuesday, November 5
Neb. All-Stars (Ex.) at Creighton (7:05)

Wednesday, November 6
Exhibition (TBA) at Illinois State (7:00)

Thursday, November 7
Mexican National (Ex.) at Drake (7:05)
Uralmash (Ex.) at SW Missouri St. (7:05)

Sunday, November 10
Chicago Challengers at Bradley (2:00)
Slovak Rep. (Ex.) at Indiana St. (6:00)

Tuesday, November 12
Russian Nat'l. (Ex.) at N. Iowa (7:05)

Wednesday, November 13
Belgium Nat'l. (Ex.) at SW Mo. St. (7:05)
Uralmash at Wichita State (7:00)

Thursday, November 14
Uralmash (Ex.) at Creighton (7:05)
St. Louis Express (Ex.) at S. Illinois (7:05)

Friday, November 15
Illinois State at Preseason WNIT
Illinois State at Iowa (7:00)
Shooting Stars (Ex.) at Indiana St. (7:00)

Saturday, November 16
Sports Tours (Ex.) at S. Illinois (4:00)
Dream Builders (Ex.) at Drake (1:05)

Sunday, November 17
Mexican Nat'l. (Ex.) at Bradley (2:00)
Illinois State at Preseason WNIT

Tuesday, November 19
Finland (Ex.) at Evansville (7:05)
Illinois State at Preseason WNIT

Wednesday, November 20
Illinois State at Preseason WNIT
C. Texas (Ex.) at Wichita State (7:00)

Friday, November 22
Rice at Bradley (7:00)
Creighton at Wyoming (TBA)
Wisconsin at Drake (7:05)
Evansville at Arizona (7:00)
Nebraska at Illinois State (7:00)
Northern Iowa at Nevada Invitational
Northern Iowa at Nevada (8:00)

Saturday, November 23
Indiana State at Dial Classic
Indiana St. vs. Old Dominion (6:00)
Northern Iowa at Nevada Invitational
Murray State at Southern Illinois (7:05)
Grambling State at SW Mo. St. (7:05)

Sunday, November 24
Kansas State at Bradley (2:00)
Evansville at Arizona State (5:00)
Missouri at Illinois State (2:00)
Indiana State at Dial Classic

Monday, November 25
Drake at Oklahoma (7:00)
Wichita State at Tulsa (7:00)

Tuesday, November 26
Buffalo at Northern Iowa (7:05)
Southern Illinois at Illinois (7:00)
Arkansas at SW Missouri State (7:05)

Wednesday, November 27
Creighton at Iowa State (7:00)
Evansville at Indiana (7:00)
Indiana State at Eastern Illinois (7:00)
Arkansas State at Wichita State (7:00)

Friday, November 29
Niagara at Northern Iowa (7:05)

Saturday, November 30
Bradley at Xavier (1:00)
Evansville at Ball State (1:00)
Illinois State at Duke Basketball Classic
Illinois State at Duke (Noon)
Florida State at SW Mo. State (2:05)

December

Sunday, December 1
Niagara at Drake (2:05)
Illinois State at Duke Basketball Classic
Tennessee Tech at S. Illinois (2:00)

Monday, December 2
Xavier at Indiana State (6:00)

Tuesday, December 3
Nebraska at Creighton (7:05)
Illinois at Illinois State (7:00)
Northern Iowa at Wisconsin (7:00)
Oklahoma at Wichita State (7:00)

Wednesday, December 4
Bradley at Loyola (7:00)
Evansville at Toledo (7:00)

Thursday, December 5
Drake at Hawaii (11:00)
Ball State at Indiana State (6:00)

Friday, December 6
Creighton at Gazette-Times Classic
Creighton vs. Illinois (8:00)
Drake vs. Southern Mississippi (7:45)
Southern Illinois at Arizona Invitational
Southern Illinois vs. Harvard (8:00)
SW Mo. State at Northwestern Tourney
SW Missouri State vs. Kent (5:00)

Saturday, December 7
Creighton at Gazette-Times Classic
SW Mo. State at Northwestern Tourney
Wichita State at Big Apple Classic
Wichita St. vs. St. Bonaventure (Noon)

Sunday, December 8
Valparaiso at Evansville (2:05)
Illinois-Chicago at Illinois State (2:00)
Indiana State at Big Four Classic
Indiana State vs. Indiana (1:00)
Iowa State at Northern Iowa (3:05)
Southern Illinois at Arizona Invitational

Tuesday, December 10
SW Missouri State at Illinois (7:00)

Wednesday, December 11
Wichita State at Kansas State (7:00)

Thursday, December 12
Drake at Iowa State (7:00)

Friday, December 13
Missouri at Creighton (7:05)
Oklahoma at SW Missouri State (7:05)

Saturday, December 14
Illinois State at Michigan State (1:00)
Northern Iowa at UW-Milw. (2:00)

Sunday, December 15
Creighton at Kansas (2:00)
Evansville at St. Louis (2:00)
M. Tennessee at Southern Illinois (2:00)

Tuesday, December 17
Evansville at Eastern Illinois (7:00)
Southern Illinois at Memphis (7:00)

Wednesday, December 18
Northern Illinois at Bradley (7:00)
Chicago Chall. (Ex.) at Illinois St. (7:00)
Loyola-Chicago at Indiana State (6:00)

Thursday, December 19
SW Texas State at Creighton (7:05)

Saturday, December 21
Bradley at Arizona State Tournament
Bradley vs. CS-Fullerton (6:00)
Iowa at Drake (7:05)
Indiana State at Loyola-Md. (Noon)
Wichita State hosts Shocker Shootout
Wichita State vs. TCU (4:00)

Sunday, December 22
Bradley at Arizona State Tournament
Northern Iowa at CS-Northridge (3:00)
SW Missouri State at Kentucky (3:15)
Wichita State hosts Shocker Shootout

Sunday, December 29

*Evansville at Bradley (2:00)
*Creighton at Wichita State (2:00)
*Drake at SW Missouri State (6:05)
*Indiana State at Illinois State (2:00)
*S. Illinois at Northern Iowa (3:05)

Tuesday, December 31
*Southern Illinois at Bradley (4:30)
*Creighton at SW Missouri State (6:05)
*Drake at Wichita State (7:00)
*Evansville at Northern Iowa (7:05)
Illinois State at Wisc.-Green Bay (3:00)

January

Friday, January 3
*Bradley at Drake (7:05)
*Northern Iowa at Creighton (7:05)
*Illinois State at Evansville (7:05)
*Indiana State at S. Illinois (7:05)

Saturday, January 4
*Wichita St. at SW Mo. St. (MVC)(1:05)

Sunday, January 5
*Bradley at Creighton (2:05)
*Northern Iowa at Drake (2:05)
*Indiana State at Evansville (2:05)
*Illinois State at Southern Illinois (2:00)

Thursday, January 9
*SW Missouri State at Bradley (7:00)

Friday, January 10
*Creighton at Indiana State (6:00)
*Drake at Illinois State (7:00)

Saturday, January 11
*Wichita State at Bradley (7:00)
*Evansville at Southern Illinois (7:05)
*SW Missouri St. at Northern Iowa (7:05)

Sunday, January 12
*Drake at Indiana State (1:00)

Monday, January 13
*Creighton at Illinois State (7:00)
*Wichita State at Northern Iowa (7:05)

Thursday, January 16
Western Illinois at Bradley (7:00)
*Evansville at Drake (7:05)
*Indiana State at Wichita State (7:00)

Saturday, January 18
*Northern Iowa at Bradley (7:00)
*Evansville at Creighton (2:05)
*Southern Illinois at Drake (2:05)
*Illinois State at Wichita State (6:30)
*Indiana State at SW Missouri St. (1:35)

Monday, January 20
*Southern Illinois at Creighton (TBA)
*Illinois State at SW Missouri St. (7:05)

Tuesday, January 21
Drake at Illinois-Chicago (6:00)

Thursday, January 23
*Bradley at Illinois State (7:00)
*Northern Iowa at Indiana State (7:00)

Friday, January 24
*SW Missouri State at Evansville (7:05)
*Wichita State at Southern Illinois (7:05)

Saturday, January 25
*Creighton at Drake (TBA)
*Northern Iowa at Illinois State (2:00)

Sunday, January 26
*Bradley at Indiana State (1:00)
*Wichita State at Evansville (2:05)
*SW Missouri State at S. Illinois (2:00)

Thursday, January 30
*Drake at Bradley (7:00)
*Creighton at Northern Iowa (7:05)
*Evansville at Illinois State (7:00)
*Southern Illinois at Indiana St. (7:00)

February

Saturday, February 1
*Creighton at Bradley (2:00)
*Drake at Northern Iowa (3:35)

*Evansville at Indiana State (1:00)
*Southern Illinois at Illinois State (2:00)
*SW Missouri St. at Wichita State (7:00)

Tuesday, February 4
Southern Illinois at Vanderbilt (7:00)

Thursday, February 6
*Bradley at SW Missouri State (7:05)
*Illinois State at Creighton (4:45)
*Northern Iowa at Wichita State (7:00)

Friday, February 7
*Indiana State at Drake (7:05)

Saturday, February 8
*Bradley at Wichita State (5:00)
*Southern Illinois at Evansville (4:30)
*Northern Iowa at SW Mo. State (2:05)

Sunday, February 9
*Indiana State at Creighton (2:05)
*Illinois State at Drake (MVC)(4:05)

Thursday, February 13
*Drake at Southern Illinois (7:05)

Friday, February 14
*SW Missouri State at Illinois St. (7:00)
*Wichita State at Indiana State (6:00)

Saturday, February 15
*Bradley at Northern Iowa (3:05)
*Creighton at Southern Illinois (2:00)
*Drake at Evansville (7:05)

Sunday, February 16
*Wichita State at Illinois State (2:00)
*SW Mo. State at Indiana State (Noon)

Monday, February 17
*Creighton at Evansville (7:05)

Thursday, February 20
*Illinois State at Bradley (7:00)
*Evansville at SW Missouri State (7:05)
*Indiana State at Northern Iowa (7:05)
*Southern Illinois at Wichita State (7:00)

Saturday, February 22
*Indiana State at Bradley (2:00)
*Drake at Creighton (2:05)
*Evansville at Wichita State (7:00)
*Illinois State at Northern Iowa (3:35)

Sunday, February 23
*S. Illinois at SW Mo. State (MVC)(8:05)

Thursday, February 27
*Bradley at Evansville (7:05)
*Wichita State at Creighton (7:05)
*SW Missouri State at Drake (7:05)
*Northern Iowa at S. Illinois (7:05)

March

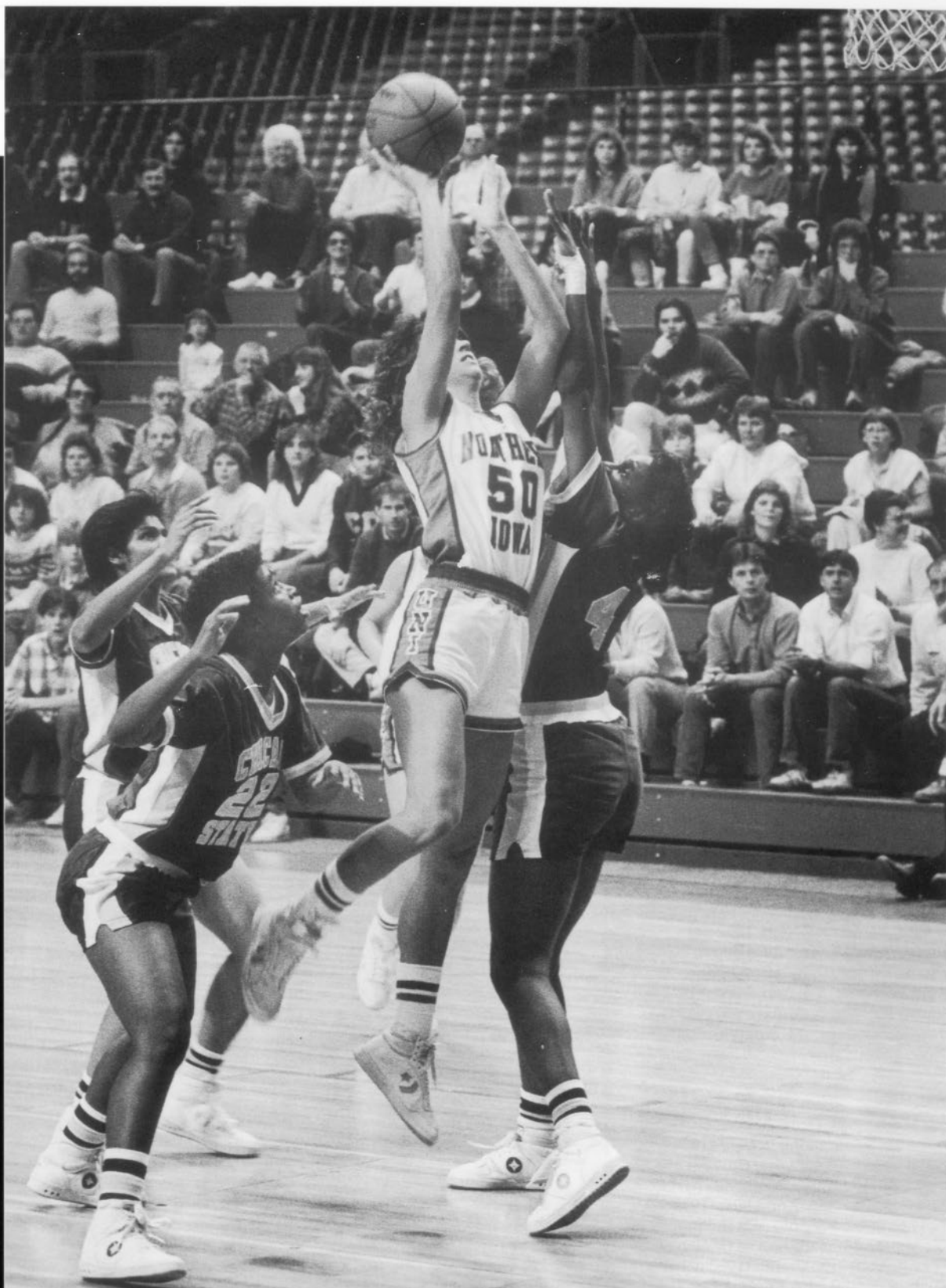
Saturday, March 1
*Bradley at Southern Illinois (7:05)
*SW Missouri State at Creighton (2:05)
*Wichita State at Drake (2:05)
*Northern Iowa at Evansville (7:05)
*Illinois State at Indiana State (1:00)

Thursday, March 6
State Farm MVC Tour. Quarterfinals
Session I - Noon
Session II - 6:00 p.m.

Friday, March 7
State Farm MVC Tour. Semis (MVC)
Session III - 6:00 p.m.

Saturday, March 8
State Farm MVC Tour. Final (MVC)
Session IV - 7:05 p.m.

** indicates MVC game
(MVC) - denotes MVC TV Network Games
Times are CST and subject to change*



Panther History

Individual Records

Game

FGs Made: 17, Diane Roberts vs. Illinois State (3/1/85)
FGs Att.: 31, Diane Roberts vs. Illinois State (3/1/85)
FG %: 1.000 (9-9), Stephanie Davis vs. Creighton (2/20/90)
3-pt. FGs Made: 7, Molly Kelly vs. Wichita State (1/20/90)
3-pt. FGs Att.: 15, Molly Kelly vs. Wichita State (1/20/90)
15, Karen Fenske vs. Wichita State (1/16/95)
3-pt FG %: 1.000 (3-3), Molly Kelly vs. Creighton (2/20/90)
FTs Made: 16, Deb Drenth vs. Northwestern (2/21/81)
FTs Att.: 19, Deb Drenth vs. Northwestern (2/21/81)
FT %: 1.000 (12-12), Ann Miller vs. Southern Illinois (2/6/92)
Points: 40, Diane Roberts vs. Illinois State (3/1/85)
Rebounds: 19, Lisa Geske vs. Illinois-Chicago (2/12/83)
19, Loretha Mosley vs. Drake (1/12/93)
Assists: 13, Ann Otten vs. SW Missouri State (1/25/86)
13, Kelley Westhoff vs. Bradley (2/24/96)
Blocks: 7, Carol Hogen vs. Nebraska-Omaha (11/26/82)
Steals: 8, Ann Miller vs. Wisconsin-Milwaukee (11/26/91)

Season

FGs Made: 216, Diane Roberts (1984-85)
FGs Att.: 448, Diane Roberts (1984-85)
FG %: .541 (118-218), Sue Grove (1980-81)
3-pt. FGs Made: 73, Molly Kelly (1989-90)
3-pt. FGs Att.: 179, Ann Miller (1992-93)
3-pt FG %: .528 (19-36), Kris Huffman (1988-89)
FTs Made: 112, Ann Miller (1992-93)
FTs Att.: 161, Diane Roberts (1984-85)
FT %: .881 (52-59), Kris Huffman (1988-89)
Points: 541, Diane Roberts (1984-85)
Scoring Average: 19.3, Diane Roberts (1984-85)
Rebounds: 224, Deb Drenth (1980-81)
Rebound Average: 10.1, Pat Zalesky (1978-79)
Assists: 155, Kelley Westhoff (1995-96)
Assist Average: 5.7, Kelley Westhoff (1995-96)
Blocks: 66, Carol Hogen (1982-83)
Block Average: 2.4, Carol Hogen (1982-83)
Steals: 84, Deb Drenth (1982-83)
Steal Average: 3.0, Deb Drenth (1982-83)
Fouls: 106, Sandy Grabowski (1985-86)
Disqualifications: 14, Sandy Grabowski (1985-86)

Career

FGs Made: 664, Diane Roberts (1984-88)
FGs Att.: 1,552, Diane Roberts (1984-88)
FG %: .536 (218-407), Sue Grove (1980-82)
3-pt. FGs Made: 109, Molly Kelly (1987-90)
3-pt. FGs Att.: 336, Ann Miller (1991-93)
3-pt FG %: .483 (25-58), Kris Huffman (1986-89)
FTs Made: 331, Deb Drenth (1980-83)
FTs Att.: 449, Deb Drenth (1980-83)
FT %: .817 (188-230), Kris Huffman (1986-89)
Points: 1,701, Diane Roberts (1984-88)
Rebounds: 788, Tami Schebler (1981-84)
Assists: 425, Loretha Mosley (1988-91)
Blocks: 122, Carol Hogen (1981-83)
Steals: 279, Deb Drenth (1980-83)
Fouls: 346, Sandy Grabowski (1985-89)
Disqualifications: 36, Sandy Grabowski (1985-89)

Active players in italics



Diane Roberts (1984-88) holds 11 UNF records, including points in a game (40), season (541) and career (1,701).

Team Records

Game

FGs Made: 41, vs. Illinois-Chicago (2/12/83)
FGs Att.: 90, vs. Concordia (1/9/81)
FG %: .678, vs. Creighton (2/20/90)
3-pt. FGs Made: 10, vs. Western Illinois (1/23/92)
3-pt. FGs Att.: 30, vs. Minnesota (12/15/95)
3-pt FG %: 1.000 (4-4), vs. Indiana State (2/5/87)
FTs Made: 32, vs. Iowa State (12/11/78)
FTs Att.: 46, vs. Iowa State (12/11/78)
FT %: 1.000 (8-8), vs. Illinois State (1/2/87)
Points: 107, vs. Creighton (2/20/90)
Rebounds: 65, vs. Concordia (1/9/81)
Assists: 28 vs. Creighton (2/20/90)
Blocks: 10, vs. Nebraska-Omaha (11/26/82)
Steals: 26, vs. Marycrest (1/28/81)
Turnovers: 46, Iowa State (12/11/78)
Margin of victory: 58 (95-37), vs. Chicago State (1/18/89)
Margin of defeat: 63 (47-118), vs. Missouri (11/19/83)

Season

FGs Made: 933, 1981-82	Points: 2,205, 1981-82
FGs Att.: 2,016, 1981-82	Scoring Average: 73.3, 1980-81
FG %: .463 (933-2,016), 1981-82	Rebounds: 1,241
3-pt. FGs Made: 121, 1995-96	Rebound Average: 44.3, 1980-81
3-pt. FGs Att.: 403, 1995-96	Assists: 432, 1989-90
3-pt FG %: .432 (83-192), 1989-90	Blocks: 149, 1981-82
FTs Made: 461, 1995-96	Steals: 364, 1981-82
FTs Att.: 667, 1995-96	Turnovers: 868, 1978-79
FT %: .717 (307-428), 1987-88	Fouls: 641, 1995-96
Wins: 22, 1981-82	
Losses: 25, 1983-84	
Winning %: .842 (16-3), 1975-76	
Opponents' Scoring Avg. (low): 61.2, 1982-83	
Opponents' Scoring Avg. (high): 82.4, 1983-84	
Games: 31, 1981-82	

Scoring

1.	Diane Roberts	1,701
2.	Deb Drenth	1,449
3.	Kris Huffman	1,294
4.	Tami Schebler	1,268
5.	Cindy Harms	1,045
6.	Lisa Geske	1,036
	Loretha Mosley	1,036
8.	Julie Street	1,016
9.	Betty Davis	999
10.	Jill Jameson	979

Field Goals - Made

1.	Diane Roberts	664
2.	Deb Drenth	559
3.	Tami Schebler	558
4.	Kris Huffman	539
5.	Lisa Geske	438
6.	Betty Davis	426
7.	Jill Jameson	414
8.	Cindy Harms	410
9.	Loretha Mosley	408
10.	Julie Street	373

Field Goals - Attempted

1.	Diane Roberts	1,552
2.	Deb Drenth	1,184
3.	Kris Huffman	1,173
4.	Tami Schebler	1,114
5.	Betty Davis	1,102
6.	Lisa Geske	1,038
7.	Jill Jameson	937
8.	Loretha Mosley	924
9.	Cindy Harms	873
10.	Julie Street	864

Field Goal Percentage

(min. 400 attempts)

1.	Sue Grove	.536
2.	Chris Robbins	.519
3.	Stephanie Davis	.491
4.	Sandy Grabowski	.489
5.	Tami Schebler	.488
	Pat Zalesky	.488
7.	Deb Drenth	.472
8.	Cindy Harms	.470
9.	Karen Gorman	.462
10.	Katie McFadden	.452

3-Point Field Goals - Made

1.	Molly Kelly	109
2.	Ann Miller	103
3.	<i>Karen Fenske</i>	84
4.	Traci Amos	83
5.	Diane Roberts	53
6.	<i>Kate Lawler</i>	44
7.	Kris Huffman	28
8.	<i>Jen Steffens</i>	25
9.	Linda Steiner	24
10.	<i>Mary Koch</i>	21

3-Point Field Goals - Attempted

1.	Ann Miller	336
2.	<i>Karen Fenske</i>	328
3.	Traci Amos	312
4.	Molly Kelly	259
5.	Diane Roberts	138
6.	<i>Kate Lawler</i>	135
7.	<i>Jen Steffens</i>	95
8.	Wendy McCoy	73
9.	Tiffany Sibley	66
10.	Linda Steiner	63

3-Point Field Goal Percentage

(min. 40 attempts)

1.	Kris Huffman	.483
2.	Molly Kelly	.421
3.	<i>Mary Koch</i>	.404
4.	Diane Roberts	.384
5.	Linda Steiner	.381
6.	Cindy Harms	.348
7.	Jill Jameson	.347
8.	<i>Kate Lawler</i>	.325
9.	<i>Erin Fox</i>	.314
10.	Ann Miller	.307

Free Throws - Made

1.	Deb Drenth	331
2.	Diane Roberts	320
3.	Julie Street	270
4.	Loretha Mosley	220
5.	Cindy Harms	209
6.	Ann Miller	207
7.	Nicki Rohde	194
8.	Kris Huffman	188
9.	Katie McFadden	172
10.	Sandy Grabowski	167

Free Throws - Attempted

1.	Deb Drenth	449
2.	Diane Roberts	441
3.	Julie Street	423
4.	Loretha Mosley	380
5.	Katie McFadden	299
6.	Cindy Harms	294
7.	Sandy Grabowski	288
8.	Chris Robbins	280
9.	Nicki Rohde	278
10.	Ann Miller	264

Free Throw Percentage

(min. 125 attempts)

1.	Kris Huffman	.817
2.	Ann Miller	.784
3.	Jill Jameson	.779
4.	<i>Kate Lawler</i>	.752
5.	Deb Drenth	.737
6.	Kathy Konigsmark	.735
7.	Diane Roberts	.726
8.	Sue Grove	.725
9.	Cindy Harms	.718
10.	Nicki Rohde	.698



Kris Huffman (1985-89) ranks among UNJ's career leaders in 10 statistical categories.

Rebounds

1.	Tami Schebler	788
2.	Deb Drenth	758
3.	Julie Street	700
4.	Diane Roberts	676
5.	Sandy Grabowski	562
6.	Lisa Geske	521
7.	Kris Huffman	475
8.	Katie McFadden	468
9.	Nicki Rohde	466
10.	Loretha Mosley	462

Assists

1.	Loretha Mosley	425
2.	Kris Huffman	322
3.	<i>Kelley Westhoff</i>	295
4.	Deb Drenth	292
5.	Traci Amos	290
6.	Betty Davis	261
7.	Nicki Rohde	240
8.	Molly Kelly	219
9.	Lisa Laughlin	188
10.	Ann Miller	185

Steals

1.	Deb Drenth	292
2.	Betty Davis	261
3.	Loretha Mosley	199
4.	Nikki Dillard	138
5.	Nicki Rohde	134
6.	Kris Huffman	131
7.	Ann Miller	130
8.	Lisa Geske	127
9.	<i>Kelley Westhoff</i>	125
10.	Traci Amos	123

Active players in italics

Season-by-Season Results

1968-69

Coach: Wanda Green (1st year)

Record: 5-1

Upper Iowa	W	60-39
Luther	W	79-44
at Iowa	W	50-48
Graceland	W	42-38
Iowa Wesleyan	L	51-53
Central Missouri State	W	40-29

1969-70

Coach: Wanda Green (2nd year)

Record: 2-4

Graceland	W	34-31
Iowa	W	57-50
at Luther	L	31-34
Iowa	L	50-52
Luther	L	51-59
at Iowa Wesleyan	L	48-52

1970-71

Coach: Wanda Green (3rd year)

Record: 7-4

at Graceland	L	42-55
Upper Iowa	W	77-39
Iowa Wesleyan	W	52-48
at Iowa	W	58-46
Iowa	L	36-48
Northern Illinois	W	51-42
at Luther	L	40-46
Luther	W	58-50
*Iowa Wesleyan	L	42-60
*Briar Cliff	W	69-34
*Luther	W	47-31

1971-72

Coach: Wanda Green (4th year)

Record: 8-1

Graceland	W	46-45
Iowa	W	57-45
Upper Iowa	W	58-36
at Luther	W	39-35
Upper Iowa	W	48-35
at Iowa	W	44-41
Luther	W	57-42
*Iowa Wesleyan	W	52-49
*Luther	L	42-49

1972-73

Coach: Wanda Green (5th year)

Record: 10-5

at Iowa	W	41-33
at Wartburg	W	62-45
Wartburg	W	75-32
Upper Iowa	W	73-26
at Luther	W	67-55
Luther	L	27-34
at Graceland	L	35-56
Iowa	W	64-30
Central Missouri State	W	67-64
*Luther	W	31-30
*Graceland	W	54-59
*Westmur	L	41-56
#Mankato	W	49-37
#Wayne State	L	50-52
#Central Missouri St.	L	40-49

1973-74

Coach: Wanda Green (6th year)

Record: 10-3

Luther	W	59-41
at Iowa	W	65-53
Iowa State	W	73-38
Graceland	W	77-45
at Buena Vista	W	59-54
Westmur	L	65-68
at Iowa Wesleyan	W	75-24
Iowa	W	85-46
at Luther	W	54-39
*Iowa	W	60-45
*Grandview	L	42-51
*Buena Vista	W	48-46
*Westmur	L	33-50

1974-75

Coach: Wanda Green (7th year)

Record: 8-9

at Grand View	L	47-65
Iowa Wesleyan	L	50-51
Wartburg	L	51-53
NIACC	W	66-64
at Graceland	W	58-41
Luther	L	66-83

at Iowa State	L	51-72
Westmur	W	91-53
Buena Vista	W	86-43
at Northwestern	L	70-74
Wisconsin-LaCrosse	L	67-73
Iowa	W	83-39
at Luther	L	69-73
Wartburg	W	53-47
*William Penn	L	56-74
*Dordt	W	64-49
*Iowa State	W	79-70

1975-76

Coach: Wanda Green (8th year)

Record: 16-4

Drake	W	84-39
at Wartburg	W	49-39
at William Penn	L	53-58
Wartburg	W	63-46
NIACC	W	80-74
Graceland	W	71-40
Mt. Mercy	W	78-69
at Iowa Wesleyan	W	70-46
Luther	W	81-53
Iowa State	W	77-50
at Wartburg	W	77-47
at NW Missouri	W	70-66
Central Missouri	W	78-68
at Luther	L	60-68
Grand View	W	74-70
*Clarke	W	66-38
*Luther	W	74-64
*Northwestern	W	101-48
*Grand View	L	35-79
*William Penn	L	58-75

1976-77

Coach: Wanda Green (9th year)

Record: 10-10

Wartburg	W	62-37
at Wisconsin-LaCrosse	L	70-73
Illinois State	W	70-55
Luther	W	73-57
at Graceland	W	78-39
at Drake	L	54-76
at Mt. Mercy	W	82-66
Iowa Wesleyan	W	64-45
NIACC	W	65-49
William Penn	L	48-65
at Iowa State	L	62-81
at Grand View	W	74-72
at Luther	L	71-73
at Wisconsin-LaCrosse	L	58-60
William Penn	L	62-66
Central Michigan	W	69-48
at Simpson	W	70-64
*Luther	L	58-74
*Iowa State	L	73-82

1977-78

Coach: Wanda Green (10th year)

Record: 4-17

Wartburg	L	44-47
at William Penn	L	50-78
Luther	L	57-67
St. Cloud State	L	55-57
Iowa State	L	71-82
Wisconsin-LaCrosse	L	42-75
Illinois State	L	50-91
Mt. Mercy	L	63-73
Simpson	W (ot)	90-87
at Iowa	L	54-74
Grand View	W	79-59
at Wartburg	L	58-60
at Drake	L	44-74
North Dakota	W	68-50
Luther	L	54-57
Luther	L	62-67
Wisconsin-LaCrosse	L	66-68
Drake	L	45-66
South Dakota	W	68-53
*Drake	L	67-93
*Iowa State	L	52-87

1978-79

Coach: Sandra Williamson (1st year)

Record: 2-20

at Iowa	L	61-106
Drake	L	58-77
at NIACC	L	69-87
Luther	L	57-72
Wisconsin-Eau Claire	W	62-52
St. Cloud State	L	76-87

Northern Michigan	L	64-75
Iowa State	L	68-88
Wartburg	W	70-44
Mt. Mercy	L	56-84
William Penn	L	58-93
at Wartburg	L	86-90
Iowa	L	50-95
at Grand View	L	58-104
at Luther	L	64-75
at South Dakota	L	59-81
at Wisconsin-LaCrosse	L	58-106
at Drake	L	62-90
at Simpson	L	69-71
at Iowa State	L	64-89
*Drake	L	43-107
*Iowa State	L	51-85

1979-80

Coach: Sandra Williamson (2nd year)

Record: 5-20

at Dubuque	W	72-55
Central	L	59-62
at South Dakota State	W	69-64
at South Dakota	L	55-63
Iowa State	L	57-80
Eastern Illinois	L	66-85
Luther	L	49-57
at Drake	L	53-77
Northern Illinois	L	62-84
William Penn	L	51-91
Western Illinois	L	80-84
at Emporia State	L	73-93
at Pittsburg State	L	69-79
at NW Missouri State	L	59-79
at Eastern Illinois	L	71-100
at Western Illinois	L	75-89
St. Ambrose	L	60-65
at Nebraska-Omaha	L	59-73
Marycrest	W	78-57
St. Cloud State	L	64-67
at William Penn	L	43-77
at Luther	W	57-50
Loras	W	85-57
South Dakota	L	87-89
at St. Ambrose	L	69-85

1980-81

Coach: J.D. Anderson (1st year)

Record: 18-10

Wartburg	W	84-51
SW Missouri State	W	74-71
at Drake	L	63-91
Loras	W	90-41
Mankato State	W	80-67
Eastern Illinois	W	78-70
at NE Missouri State	W	75-74
at Marycrest	W	90-81
SW State (Minn.)	W	65-46
at Northern Illinois	L	76-86
Concordia	W	87-54
NE Missouri State	L	75-79
Wisconsin-Stevens Point	W	66-61
at Lincoln (Ill.)	L	71-82
Northern Illinois	W	74-64
Minnesota-Duluth	W	73-58
Wisconsin-LaCrosse	L	76-86
at St. Cloud State	L	50-78
at Loras	W	80-55
Simpson	W	86-60
Morningside	W	70-60
St. Ambrose	W	54-49
at St. Cloud State	L	65-67
Augustana (Ill.)	L	55-58
William Penn	L	49-71
*Northwestern	W	84-69
*St. Ambrose	L	62-76
*Northwestern	W	91-78

1981-82

Coach: J.D. Anderson (2nd year)

Record: 22-9

at Wartburg	W	83-55
St. Ambrose	W	67-51
at Nebraska-Omaha	L	54-71
Wyoming	L	72-79
SW Missouri State	W	71-66
Wisconsin-Milwaukee	W	80-55
Loras	W	80-66
Marycrest	W	87-59
at Augustana (Ill.)	W	66-52
Grand View	L	72-76
at South Dakota State	W	73-43
at Augustana (S.D.)	W	66-60

at Central	W	71-64
at Grand View	W	71-63
North Central Illinois	W	71-66
at Northern Illinois	L	51-58
Luther	W	74-42
Northern State	W	72-67
Grand View	L	51-52
Iowa	L	68-74
Marycrest	W	95-64
Northwestern	W	79-55
NE Missouri State	W	89-72
Central	W	74-53
at Marquette	L	68-72
at Wisconsin-Milwaukee	W	71-61
Upper Iowa	W	81-62
*St. Ambrose	L	65-71
*NE Missouri State	W	68-60
*at William Penn	L	58-67
*SE Missouri State	W	59-56

1982-83

Coach: J.D. Anderson (3rd year)

Record: 17-11

Nebraska-Omaha	W	78-62
at Augustana (S.D.)	W	57-45
St. Francis	W	78-58
Oklahoma City	L	55-62
Wisconsin-LaCrosse	L	58-70
St. Cloud State	W	62-58
Mankato State	L	69-71
at St. Ambrose	W	73-57
William Penn	W	74-52
Western Illinois	W	78-47
Mt. Mercy	W	77-48
at NE Missouri State	W	73-63
at Iowa	L	65-66
Marquette	W	76-45
Illinois-Chicago	W	91-72
at Central	L	61-73
at Grand View	L (ot)	76-79
St. Cloud State	L	56-72
Winona State	W	83-51
Northern State	L	60-74
at St. Louis	W	67-36
at SIU-Edwardsville	W	81-59
Augustana (S.D.)	L	71-72
at Mt. Mercy	W	67-52
at DePaul	L (ot)	54-59
Illinois-Chicago	W	65-54
Wisconsin-Milwaukee	W	81-80
at Iowa State	L	66-77

1983-84

Coach: J.D. Anderson (4th year)

Record: 2-25

at Missouri	L	47-110
at Central Missouri	L	61-88
St. Ambrose	L	46-68
Iowa	L	64-71
St. Cloud State	L	63-78
Iowa State	W	73-65
at Loyola	L	58-94
at Illinois at Chicago	L	44-74
at Wisconsin	L	48-76
SW Missouri State	L	58-81
Wichita State	L	57-100
at Eastern Illinois	L	51-77
at Southern Illinois	L	47-79
Indiana State	L	65-68
Illinois State	L	60-80
at Drake	L	41-85
at Bradley	L	55-104
at Western Illinois	L	63-88
Southern Illinois	L	37-83
Eastern Illinois	L	57-86
at Illinois State	L	42-75
at Indiana State	L	49-70
Drake	L	68-88
Western Illinois	W	95-88
Bradley	L	76-77
at Wichita State	L	59-88
at SW Missouri State	L	59-83

1984-85

Coach: Kim Mayden (1st year)

Record: 5-23

at St. Ambrose	L	46-72
at Wisconsin	L	52-61
at Iowa State	L	60-97
St. Cloud State	L	53-84
Eastern Washington	L	60-80
Illinois-Chicago	L	65-84
Loyola	L	62-80

Season-by-Season Results

Bradley	L	70-99
Western Illinois	L	69-103
Grand View	W	77-73
Drake	W	80-79
DePaul	L	59-77
at Southern Illinois	L	51-53
at Eastern Illinois	L	59-79
SW Missouri State	L	65-89
Wichita State	L	75-89
at Illinois State	L	65-99
at Indiana State	L	71-83
at Drake	L	81-114
Loras	W	82-52
Eastern Illinois	L	76-80
Southern Illinois	L	57-68
at Wichita State	W	56-55
SW Missouri State	L	68-98
Indiana State	L	58-62
Illinois State	L	68-98
at Bradley	L	74-87
at Western Illinois	W	96-86

1985-86

Coach: Kim Mayden (2nd year)

Record: 9-18

Nevada-Las Vegas	L	65-79
Texas-El Paso	W	73-65
Montana State	W	73-69
Wisconsin	L	48-72
Iowa State	L	70-84
William Penn	L	68-76
Winona State	W	89-77
at Western Illinois	W	74-72
at Bradley	L	63-75
Illinois State	L	64-86
Drake	L	76-86
Indiana State	L	72-73
Loras	W	88-70
at Wichita State	L	61-78
at SW Missouri State	W	82-81
Eastern Illinois	W	87-78
Southern Illinois	L	47-84
at Indiana State	L	50-85
at Illinois State	L	62-83
St. Ambrose	W	77-69
at Drake	L	60-97
SW Missouri State	W	80-74
Wichita State	L	57-88
at Southern Illinois	L	40-69
at Eastern Illinois	L	56-80
Bradley	L	75-98
Western Illinois	L	71-72

1986-87

Coach: Kim Mayden (3rd year)

Record: 6-20

Maryland-Baltimore Co.	W	84-68
at Iowa State	L	41-76
at Northern Illinois	L	72-86
Missouri	L	54-85
Illinois at Chicago	W	95-84
Chicago State	L	76-82
Drake	W	64-61
at Eastern Illinois	L	78-87
at Southern Illinois	L	68-98
Illinois State	L	65-81
Indiana State	W	84-78
at Western Illinois	W	81-75
at Bradley	L	68-86
Wichita State	L	72-95
SW Missouri State	L	82-93
Southern Illinois	L	64-87
Eastern Illinois	L	70-81
Creighton	L	75-82
at Indiana State	L	70-81
at Illinois State	L	59-79
Bradley	L	82-90
Western Illinois	W	56-52
at SW Missouri State	L	63-95
at Marquette	L	64-78
at Drake	L	61-90

1987-88

Coach: Kim Mayden (4th year)

Record: 9-17

at Stetson	L	76-82
at Florida Southern	W	62-55
Loras	W	86-66
at Creighton	L	72-113
at Illinois-Chicago	W	73-55
at Chicago State	W	68-48
Iowa State	L	66-88
at Wichita State	L	54-103

at SW Missouri State	L	66-85
Illinois State	L	72-86
Indiana State	L	72-85
at Eastern Illinois	L	66-78
at Southern Illinois	L	39-71
Bradley	W	87-79
Western Illinois	L	72-75
at Drake	L	53-77
at Indiana State	L	80-85
at Illinois State	L	67-89
Southern Illinois	L	58-60
Eastern Illinois	L	75-90
at Western Illinois	W	75-72
at Bradley	L	72-98
Wisconsin-Green Bay	W	61-54
Drake	L	52-67
SW Missouri State	W	90-80
Wichita State	W	80-58

1988-89

Coach: Kim Mayden (5th year)

Record: 7-18

at St. Louis	L	42-67
at Arkansas State	L	73-89
at Wisconsin-Green Bay	L	54-80
Colorado State	L	56-60
Marquette	W	68-61
Illinois-Chicago	W	65-55
SW Missouri State	L	62-73
Wichita State	W	84-77
at Eastern Illinois	L	59-69
at Southern Illinois	L	43-56
Indiana State	L	67-72
Illinois State	L	68-93
Chicago State	W	95-37
at Drake	L	72-108
at Bradley	L	57-60
at Western Illinois	L	83-101
Southern Illinois	L	59-79
Eastern Illinois	W	91-81
at Illinois State	L	65-83
at Indiana State	L	67-75
Drake	L	61-70
Western Illinois	L	77-86
Bradley	W	76-62
at Wichita State	W	83-78
at SW Missouri State	L	64-69

1989-90

Coach: Terri Lasswell (1st year)

Record: 5-22

Central Missouri State	L	66-86
Northern Arizona	W	59-55
at SW Texas State	L	38-76
at Iowa State	L	52-76
at Wisconsin-Green Bay	L	50-79
Oklahoma	L	76-78
at Nebraska	L	48-80
Bradley	L	62-68
Western Illinois	W	84-66
Drake	L	69-77
at Southern Illinois	L	59-78
at Eastern Illinois	L	67-79
SW Missouri State	L	56-65
Wichita State	L	68-83
Illinois State	L	68-82
at Indiana State	L	68-81
Chicago State	W	77-58
at Drake	L (ot)	56-60
Eastern Illinois	L	62-77
Southern Illinois	L	61-75
at Wichita State	L	67-68
at SW Missouri State	L	48-73
Creighton	W	107-80
at Indiana State	W	69-67
Illinois State	L	58-81
at Western Illinois	L	77-88
at Bradley	L	68-88

1990-91

Coach: Terri Lasswell (2nd year)

Record: 6-21

Wisconsin-Milwaukee	W	68-64
Wisconsin-Green Bay	L	60-78
at Creighton	L	58-93
at Chicago State	W	63-54
at Illinois-Chicago	L	64-66
Nebraska	L	56-71
Iowa State	L	56-67
at Colorado State	W	53-49
at Wyoming	L	48-67
at Western Illinois	L	71-78
at Bradley	L	60-75

Illinois State	L	66-72
Indiana State	W	71-64
at Drake	L	66-81
at Wichita State	W	65-57
at SW Missouri State	L	43-87
Eastern Illinois	L	61-68
Southern Illinois	L	48-74
at Indiana State	L	76-97
at Illinois State	L	63-80
Drake	L	47-68
SW Missouri State	L	47-74
Wichita State	W	68-56
at Southern Illinois	L	40-82
at Eastern Illinois	L	64-68
Bradley	L	50-90
Western Illinois	L	67-69

1991-92

Coach: Terri Lasswell (3rd year)

Record: 4-23

at Wisconsin-Milwaukee	L	66-78
Valparaiso	L (ot)	85-88
at Kansas	L	34-82
St. John's	L	54-70
at Iowa State	L	46-64
Creighton	L	61-87
Illinois-Chicago	L	60-62
Colorado State	W	71-68
Drake	L	58-72
at Eastern Illinois	L	69-74
at Southern Illinois	L	59-67
Illinois State	L	59-79
Indiana State	L	53-58
at Western Illinois	L	85-92
at Bradley	L	75-87
Wichita State	L	71-82
SW Missouri State	L	44-89
Southern Illinois	W	60-59
Eastern Illinois	W	76-62
at Indiana State	L	40-80
at Illinois State	L	54-75
Bradley	L	78-81
Western Illinois	W	75-58
at SW Missouri State	L	45-86
at Wichita State	L	70-86
Northeastern Illinois	L	60-66
at Drake	L	59-69

1992-93

Coach: Terri Lasswell (4th year)

Record: 10-17

at Missouri-Kansas City	L	41-57
at Kansas State	L	55-61
Wyoming	L	52-62
at Western Illinois	W	65-62
at Northeastern Illinois	W	66-58
at Valparaiso	W	82-72
Iowa State	W	68-50
at Illinois State	L	67-72
at Bradley	L	73-79
Wichita State	W	75-69
SW Missouri State	L	63-84
at St. Louis	W	78-59
at Drake	L (4ot)	106-112
Creighton	L	66-90
Southern Illinois	L	62-86
Indiana State	W	74-69
at Creighton	L	41-76
Drake	L (ot)	71-78
Kansas	L	73-75
at Indiana State	W	78-59
at Southern Illinois	L	68-92
at SW Missouri State	L	54-84
at Wichita State	L	52-87
Chicago State	W	95-61
Bradley	W	87-75
Illinois State	L	66-67
**at Creighton	L	73-86

1993-94

Coach: Terri Lasswell (5th year)

Record: 6-20

Western Illinois	L	56-65
Missouri-Kansas City	W	69-62
vs. Western Michigan	L	72-94
vs. Morehead State	W	80-75
at Arizona State	L	69-84
at Northern Arizona	L	56-60
Nebraska	L	65-77
Minnesota	L	59-90
at Southern Illinois	L	61-75
at Indiana State	L	50-70
Wichita State	L	69-86

SW Missouri State	L	46-80
at Bradley	L	73-89
St. Louis	W	80-66
at Illinois State	L	59-67
at Chicago State	W	80-62
Drake	L	50-80
Creighton	L	68-81
at SW Missouri State	L	55-87
at Wichita State	L	59-67
Bradley	L	53-73
Illinois State	W (ot)	82-78
at Creighton	L	63-91
at Drake	L	64-80
Indiana State	L	63-77
Southern Illinois	W	75-64

1994-95

Coach: Terri Lasswell (6th year)

Record: 4-22

at Washington State	L	73-112
vs. Utah	L	48-89
Kansas	L	38-83
at Minnesota	L	44-89
at Nebraska	L	56-87
at Missouri-Kansas City	W	82-62
Wisconsin-Milwaukee	W	67-47
Northern Arizona	W	71-70
at Bradley	L	48-87
Creighton	L	62-83
at Drake	L	61-88
Wichita State	L	69-86
SW Missouri State	L	62-81
at Evansville	L	59-69
at Southern Illinois	L	53-63
Illinois State	W	63-56
Indiana State	L	54-70
Drake	L	62-81
at Creighton	L	68-83
at SW Missouri State	L	38-71
at Wichita State	L	50-78
Evansville	L	62-68
Southern Illinois	L	64-78
at Indiana State	L	59-79
at Illinois State	L	51-77
Bradley	L	56-72

1995-96

Coach: Tony DiCecco (1st year)

Record: 7-20

at Kansas	L	71-95
vs. St. Joseph's	L	64-68
at Iowa State	L	66-96
Minnesota	L	68-80
Missouri-Kansas City	W	68-47
at Buffalo	L	65-73
at Niagara	L	85-88
at Indiana State	L	70-86
at Illinois State	L	65-76
SW Missouri State	L	64-83
Wichita State	L	62-68
at Creighton	L	67-73
Wisconsin	L	68-95
Evansville	W	78-60
Southern Illinois	L	59-83
Bradley	L	63-75
at SW Missouri State	L	63-75
at Wichita State	L	76-82
Drake	W	91-88
Creighton	W	78-76
at Evansville	W (ot)	79-77
at Southern Illinois	L	54-84
at Drake	L	67-77
at Bradley	W (ot)	87-82
Illinois State	L	69-75
Indiana State	W	76-67
**SW Missouri State	L	67-83

* indicates State Basketball Toumey game

indicates Regional Tournament game

** indicates MVC Tournament game

Records versus Opponents

Opponent	Record	Opponent	Record
Arizona State	0-1	Niagara	0-1
Arkansas State	0-1	North Central	1-0
Augustana (Ill.)	1-1	North Dakota	1-0
Augustana (S.D.)	2-1	NE Missouri State	3-1
Bradley	4-22	Northern Arizona	2-1
Briar Cliff	1-0	NE Illinois	1-1
Buena Vista	3-0	Northern Illinois	1-4
Buffalo	0-1	Northern Michigan	0-1
Cal State-Northridge	0-0	Northern State	1-1
Central (Iowa)	2-2	Northwestern	4-1
Central Michigan	1-0	NW Missouri State	1-1
Central Missouri State	2-5	Oklahoma	0-1
Chicago State	6-1	Oklahoma City	0-1
Clark	1-0	Pittsburg (Kan.) State	0-1
Colorado State	2-1	St. Ambrose	3-6
Concordia	1-0	St. Cloud State	1-8
Creighton	2-12	St. Francis (Ill.)	1-0
DePaul	0-2	St. John's	0-1
Dordt	1-0	St. Joseph's (Pa.)	0-1
Drake	4-32	St. Louis	3-1
Dubuque	1-0	Simpson	3-1
Eastern Illinois	4-17	South Dakota	1-3
Eastern Washington	0-1	South Dakota State	2-0
Emporia State	0-1	SE Missouri State	1-0
Evansville	2-2	Southern Ill.-Carbondale	2-24
Florida Southern	1-0	Southern Ill.-Edwardsville	1-0
Graceland	3-0	SW Missouri State	5-24
Grand View	6-5	SW State (Minn.)	1-0
Illinois-Chicago	5-4	SW Texas State	0-1
Illinois State	3-26	Stetson	0-1
Indiana State	6-20	Texas-El Paso	1-0
Iowa	1-6	Upper Iowa	1-0
Iowa State	6-18	Utah	0-1
Iowa Wesleyan	4-4	Valparaiso	1-1
Kansas	0-4	Wartburg	7-5
Kansas State	0-1	Washington State	0-1
Lincoln (Ill.)	0-1	Wayne State	0-1
Loras	7-0	Weber State	0-0
Loyola (Ill.)	0-2	Western Illinois	10-13
Luther	5-11	Western Michigan	0-1
Mankato State	2-1	Westmar	1-0
Marquette	2-2	Wichita State	7-19
Marycrest	4-0	William Penn	1-11
Maryland-Baltimore Co.	1-0	Winona State	2-0
Minnesota	0-3	Wisconsin-Madison	0-4
Minnesota-Duluth	1-0	Wisconsin-Eau Claire	1-0
Missouri	0-2	Wisconsin-Green Bay	1-3
Missouri-Kansas City	2-2	Wisconsin-LaCrosse	0-8
Montana State	1-0	Wisconsin-Milwaukee	5-1
Morehead State	0-1	Wisconsin-Stevens Point	1-0
Morningside	1-0	Wyoming	0-3
Mt. Mercy	4-2		
Nebraska	0-4		
Nebraska-Omaha	1-2		
Nevada	0-0		
Nevada-Las Vegas	0-1		

1996-97 opponents in italics

All-Time Coaching Records

Wanda Green (1968-78)

1968-69	5-1
1969-70	2-4
1970-71	7-4
1971-72	8-1
1972-73	10-5
1973-74	10-3
1974-75	8-9
1975-76	16-4
1976-77	10-10
1977-78	4-17
Total	78-58 (.574)

Sandra Williamson (1978-80)

1978-79	2-20
1979-80	5-20
Total	7-40 (.149)

J.D. Anderson (1980-84)

1980-81	18-10
1981-82	22-9
1982-83	17-11
1983-84	2-25
Total	59-55 (.518)

Kim Mayden (1984-88)

1984-85	5-23
1985-86	9-18
1986-87	6-20
1987-88	9-17
1988-89	7-18
Total	36-96 (.273)

Terri Lasswell (1988-95)

1989-90	5-22
1990-91	6-21
1991-92	4-23
1992-93	10-17
1993-94	6-20
1994-95	4-22
Total	35-125 (.219)

Tony DiCecco (1995-present)

1995-96	7-20
Total	7-20 (.259)

A

Abbott, Carol (1974-75-76)
Abbott, Cathy (1976-77-78)
Alberti, Jennith (1972)
Allen, Teresa (1971-72)
Alloway, Linda (1969-70-71)
Amos, Traci (1991-92-93-94)
Amrhein, Kaen (1989-90-91-92)
Anderson, Laurie (1974-75)
Anderson, Mary (1968)
Anderson, Sherry (1970)
Andrieni, Beth (1978-79-80)

B

Bachman, Debbie (1975-76-77)
Bacus, Donna (1975-76)
Bainbridge, Dana (1976-77)
Baker, Sandra (1975-76)
Baker, Sandra (1974-75)
Bates, Cathy (1984-85)
Beavers, Sue (1987)
Benon, Janeen (1975-76-77)
Berger, Jennifer (1982)
Bowers, Cindy (1981-82-83-84)
Bowman, Vicki (1971)
Brauhn, Susan (1970)
Braun, Diane (1972-73-74-75)
Breck, Teri (1981)
Burman, Marie (1970-71-72)
Burns, Sue (1974-75)
Busch, Debbie (1970-71)

C

Case, Beverly (1970-71)
Charipar, Lisa (1976-77)
Christensen, Karen (1968-69)
Collins, Deena (1972)
Combs, Celeste (1981-82-83-84)
Cook, Colette (1978)
Craft, Debra (1972)
Crawford, Cheryl (1968-69)
Cuvelier, Lynn (1984)

D

Davis, Betty (1980-81-82-83)
Davis, Brietney (1994)
Davis, Stephanie (1990-91-92)
Destival, Darlene (1970-71)
Diercks, Jenny (1974-75-76-77)
Dillard, Nikki (1992-93-94-95)
Drenth, Deb (1980-81-82-83)
Duhrkopf, Lori (1975-76-77)

E

Ebensberger, Sherry (1971-72)
Engler, Terry (1971)

F

Fenske, Karen (1994-95-96)
Finn, Marcia (1972-73-74-75)
Fratzke, Brenda (1984)
Freshwater, Lori (1984)
Frieden, Jo (1979)
Fox, Erin (1996)

G

Garman, Laura (1984)
Gebert, Kris (1982)
Geske, Lisa (1980-81-82-83)
Gibbs, Kim (1978)
Gilbert, Leann (1979)
Goodwin, Mary (1981-82)
Gordon, Robbin (1982)
Gorman, Karen (1985)
Grabowski, Sandy (1986-87-88-89)
Grady, Becky (1982-83)
Green, Marcia (1981)
Gronoski, Lisa (1991-92)
Grove, Sue (1980-81)

H

Hach, Lynn (1985)
Hanson, Allegra (1976-77-78)
Hanson, Cindy (1983-84-85)
Harbin, Toby (1995)
Harmening, Rachel (1976-77-78-79)
Harms, Cindy (1986-87-88-89)
Harper, Kristi (1973-74-75)
Hartman, Lois (1969-70-71)
Haugen, Janan (1970)
Hensel, Peggy (1970-71)
Hensley, Kristi (1976-77)
Hernandez, Carmen (1978-79-80)
Hesson, Diane (1973)
Hoffmeier, Julayne (1968-69)
Hogen, Carol (1982-83)
Huebner, Susan (1974-75-76-77)
Huffman, Kris (1986-87-88-89)

I

Ira, Rona (1971)
Ira, Tess (1986)

J

Jameson, Jill (1989-90-91-92)
Jaspers, Carrie (1993-94-95-96)
Jennings, Linda (1975-76)
Joachim, Pat (1972-73-74-75)
Johnson, Jessica (1995-96)

K

Kadick, Cindy (1981-82)
Kadner, Shannan (1995-96)
Kalec, Vaune (1979)
Kappel, Brenda (1983-84-85-86)
Kaune, Deb (1973)
Kelly, Molly (1987-88-89-90)
Kennedy, Theresa (1978)
Kluber, Lori (1972-73)
Knapp, Lori (1983)
Knapp, Robyn (1986-87)
Koch, Mary (1996)
Kolstedt, Kathy (1988-89-90-91)
Konigsmark, Kathy (1980-81)
Kopriva, Diane (1983)
Krug, Emilie (1980)

L

Lambert, Karla (1979)

Larson, Cindy (1978)
Larson, Gwen (1969-70-71)
Laughlin, Lisa (1981-82-83-84)
Lawler, Kate (1994-95-96)
Leavens, Jan (1981)
Little, Jill (1971)
Luett, Sherri (1975-76-77)

M

Magee, Laurie (1980)
McCartney, Kris (1974-75-76-77)
McCoy, Wendy (1992-93-94)
McDonald, Michelle (1975-76)
McFadden, Katie (1990-92-93-94)
McKee, Elizabeth (1968-69)
Meier, Jan (1969-70-71)
Messerschmidt, Janet (1975-76-77)
Meyer, Kris (1970-71-72)
Miller, Ann (1992-93)
Miller, Nancy (1972-73-74-75)
Miller, Stephanie (1985)
Miskell, Adrienne (1995-96)
Moeller, Jo Lynn (1972-73-74-75)
Mohr, Angie (1991)
Montgomery, Jamie (1968-69)
Mosher, Ann (1979)
Mosley, Loretha (1988-89-90-91)
Munz, Heidi (1996)

N

Neal, Connie (1978)
Nelson, Krista (1979-80)

O

Otten, Anne (1985-86)

P

Parks, Theresa (1975-76-77-78)
Paulson, Rejean (1970)
Peelen, Dianne (1987-88)
Peeler, Jackie (1984)
Phillipson, Mary (1974-75-76-77)
Pierson, Lavonne (1970-71)
Pletch, Carla (1969-70-71)

R

Rasmussen, Mary (1973)
Reynolds, Phyllis (1980)
Rhoads, Marce (1973)
Rickert, Ellen (1975-76)
Rickertson, Diana (1971)
Risvoid, Laura (1976-77-78-79)
Robbins, Chris (1991-92-93-94)
Roberts, Diane (1985-86-87-88)
Robertson, Angel (1992)
Rogers, Lori (1979)
Rohde, Nicki (1987-88-89-90)
Rolinger, Cami (1986-87)
Ropa, Esthyr (1983)
Roquet, Laura (1982)
Runge, Deann (1985)

S

Samuelson, Deanna (1989-90)

Saunders, Deborah (1975)
Sayles, Tracy (1983)
Schebler, Tami (1981-82-83-84)
Schlitz, Karla (1978-79)
Schroeder, Paula (1976-77-78-79)
Schulewitz, Stephanie (1984)
Schweer, Doris (1970)
Shafar, Connie (1968)
Shafer, Chris (1986-87-88-89)
Shay, Debbie (1972-73-74)
Shinn, Susie (1973)
Shogren, Kathy (1972-73-74-75)
Sibels, Lori (1981)
Sibley, Tiffany (1992-93)
Simonson, Becky (1993-94-95-96)
Sir, Mary (1979)
Smith, Sue (1968)
Smythe, Kim (1985-86-87-88)
Sorenson, Carrie (1971)
Stamper, Jan (1978)
Steffens, Jen (1995-96)
Stewart, Evelyn (1969)
Steiner, Linda (1990-91-92)
Stockman, Pat (1973-74-75-76)
Stoffregen, Erin (1986)
Street, Julie (1990-92-93-94)
Strub, Lisa (1982-83)
Sulentic, Diane (1969-70)

T

Tiarks, Lynette (1980-81)
Tietge, Mary (1971-72-73)
Tollakson, Nanette (1976-77)
Troyna, Donna (1973-74-75)
Truax, Amanda (1994-95-96)
Tyler, Sue (1980)

U

Ubben, Gwen (1981-82-83)

V

Vanderbeck, Paula (1978)
Vander Plas, Dannelle (1995)
Volbrecht, Laura (1992-93-94-95)

W

Wahlstrom, Barb (1973-74-75-76)
Walker, Helen (1974-75-76-77)
Wallace, Kathleen (1968-69-70)
Wentzien, Tracy (1978)
Westhoff, Kelley (1994-95-96)
Whitaker, Kay (1971-72-73)
Wiebold, Rhonda (1987-88-89-90)
Willadsen, Melanie (1992-93-94)
Wilson, Chris (1983-84)
Wilson, Jan (1979)
Winchip, Nancy (1979-80-81)
Wisnieski, Bark (1982)
Wumkes, Robin (1972)

Y

Young, Maura (1980)

Z

Zalesky, Pat (1979-80)

Radio/Television Roster



10

**Heidi
MUNZ**

5-6, guard, sr.
Milledgeville, IL
Rock Valley CC



15

**Kelley
WESTHOFF**

5-8, guard, sr.
Dubuque, IA
Wahlert H.S.



20

**Ky
PETERSEN**

5-10, guard/for., fr.
Avoca, IA
AvoHa-Sheby-
Tenant H.S.



22

**Mary
KOCH**

5-10, g./for., soph.
Pequot Lakes, MN
Pequot Lakes H.S.



23

**Kate
LAWLER**

5-11, forward, sr.
Rochester, MN
Lourdes H.S.



24

**Karen
FENSKE**

5-9, guard, sr.
Ellsworth, WI
Ellsworth H.S.



30

**Jill
SEIDL**

5-6, guard, fr.
Carroll, IA
Kuemper H.S.



32

**Shannan
KADNER**

6-1, center, jr.
Conrad, IA
BCL-UW H.S.



33

**Erin
FOX**

5-7, guard, soph.
Denver, IA
Denver H.S.



40

**Jen
STEFFENS**

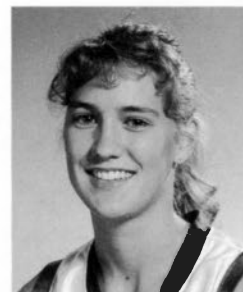
5-11, forward, jr.
Primghar, IA
South O'Brien H.S.



44

**Angella
WELCH**

5-10, forward, fr.
Des Moines, IA
Lincoln H.S.



45

**Kate
HANNEMAN**

5-10, guard/for., fr.
Center Point, IA
Center Point-
Urbana H.S.



50

**Allison
STARR**

5-9, guard, fr.
Wellsburg, IA
Wellsburg-
Steamboat H.S.



52

**Jessica
JOHNSON**

6-0, forward, jr.
Madisonville, KY
North Hopkins H.S.



54

**Adrienne
MISKELL**

6-0, forward, jr.
O'Fallon, IL
O'Fallon Township
H.S.

Postcards from the Panthers

Gino's East Pizzeria

Chicago, Illinois

Greetings from . . .

Niagara Falls!

Tourney

Des Moines,
Iowa

Hi -
1995-96 was great! This
year we're headed to Reno,
Nevada and Northridge,
California, as well as our
usual trips in the Midwest.
We'll see you in Springfield,
Missouri in early March for
the MVC Tournament.



- The Panthers



1996-97 UNI WOMEN'S BASKETBALL SCHEDULE

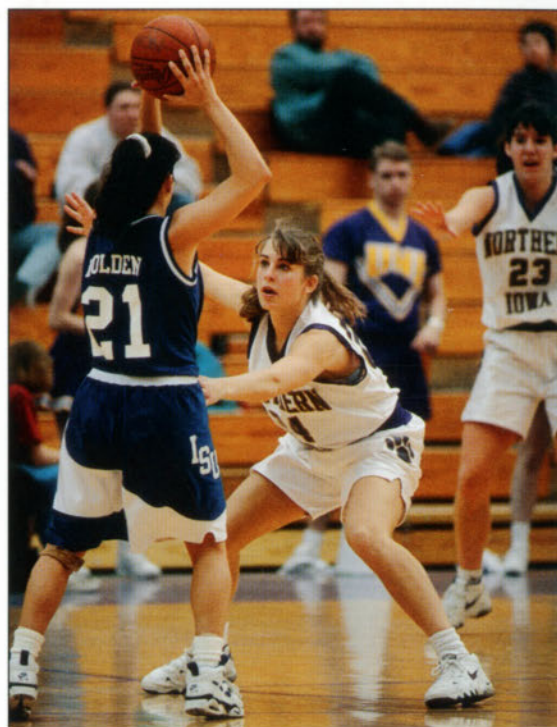
Mon., Nov. 4	Dream Builders (Exhibition)	7:30 p.m. (West Gym)
Tues., Nov. 12	Russian National (Exhibition)	7:05 p.m. (West Gym)
Fri., Nov. 22	Nevada Invitational	
	UNI vs. Nevada	8:00 p.m.
	St. Joseph vs. Weber State	10:00 p.m.
Sat., Nov. 23	Nevada Invitational	
	Consolation/championship	6:00/8:00 p.m.
Tues., Nov. 26	Buffalo	7:05 p.m.
Fri., Nov. 29	Niagara	7:05 p.m.
Tues., Dec. 3	Wisconsin	7:00 p.m.
Sun., Dec. 8	Iowa State	3:05 p.m.
Sat., Dec. 14	Wisconsin-Milwaukee	2:00 p.m.
Sun., Dec. 22	Cal State-Northridge	3:00 p.m.
Sun., Dec. 29	*Southern Illinois	3:05 p.m.
Tues., Dec. 31	*Evansville	7:05 p.m.
Fri., Jan. 3	*Creighton	7:05 p.m.
Sun., Jan. 5	*Drake	2:05 p.m.
Sat., Jan. 11	*Southwest Missouri State	7:05 p.m.
	(@ NU High)	
Mon., Jan. 13	*Wichita State	7:05 p.m.
Sat., Jan. 18	*Bradley	7:00 p.m.
Thurs., Jan. 23	*Indiana State	7:00 p.m.
Sat., Jan. 25	*Illinois State	2:00 p.m.
Thurs., Jan. 30	*Creighton	7:05 p.m.
Sat., Feb. 1	*Drake	3:35 p.m. **
Thurs., Feb. 6	*Wichita State	7:00 p.m.
Sat., Feb. 8	*Southwest Missouri State	2:05 p.m.
Sat., Feb. 15	*Bradley	3:05 p.m.
Thurs., Feb. 20	*Indiana State	7:05 p.m.
Sat., Feb. 22	*Illinois State	3:35 p.m. **
Thurs., Feb. 27	*Southern Illinois	7:05 p.m.
Sat., Mar. 1	*Evansville	7:05 p.m.
Thurs.-Sat., Mar. 6-8	Missouri Valley Conference Tournament at Springfield, Missouri	

* indicates Missouri Valley Conference game

** indicates doubleheader with men

Bold indicates home game - played at UNI-Dome unless otherwise noted

All times Central Standard Time (CST)



**“UNI Challenge:
Expect it and
accept it.”**