

1992

## 1992 Northern Iowa Baseball

University of Northern Iowa

*Let us know how access to this document benefits you*

Copyright ©1992 Athletics, University of Northern Iowa

Follow this and additional works at: <https://scholarworks.uni.edu/amg>



Part of the [Higher Education Commons](#)

---

### Recommended Citation

University of Northern Iowa, "1992 Northern Iowa Baseball" (1992). *Athletics Media Guides*. 180.  
<https://scholarworks.uni.edu/amg/180>

This Book is brought to you for free and open access by the Athletics at UNI ScholarWorks. It has been accepted for inclusion in Athletics Media Guides by an authorized administrator of UNI ScholarWorks. For more information, please contact [scholarworks@uni.edu](mailto:scholarworks@uni.edu).

**Offensive Materials Statement:** Materials located in UNI ScholarWorks come from a broad range of sources and time periods. Some of these materials may contain offensive stereotypes, ideas, visuals, or language.

NORTHERN IOWA  
**1992**  
BASEBALL



**WE COME TO PLAY**



# THIS IS NORTHERN IOWA

**F**or 115 years, the University of Northern Iowa has emphasized outstanding undergraduate education, with complementary graduate programs at the master's, specialist's and doctoral levels. Building on its historic strength in teacher education, the University has developed a number of outstanding programs in business, natural sciences, humanities and fine arts, and social and behavioral sciences. Enrollment stands at approximately 13,200 students from every county in Iowa, 36 states and 44 countries.

Considered a long-time leader in the field of teacher education, Northern Iowa has implemented several programs that continue this tradition of excellence. UNI's Regent's Center for Early Developmental Education is a leading setting for research and training in the education of young children. The Center is the only educational resource of its kind in Iowa. The University's mathematics and science education programs have been recognized among the best in the country.

The College of Business Administration has become the largest undergraduate business school in Iowa. The College's Department of Accounting is ranked among the 10 best in the country by educators and accounting professionals. In a national survey of 400 accounting faculty, Northern Iowa ranked as one of their top programs. UNI's accounting graduates continue the tradition of scoring well on the CPA exam. UNI has an average pass rate of 65 percent, compared to the national pass rate of 20 percent. All seven of Iowa's national accountancy award winners in 1990 were graduates of Northern Iowa.

UNI was ranked seventh among the top 15 colleges and universities in the Midwest in U.S. News and World Report's 1991 American's Best Colleges Book. U.S. News also ranked UNI second among "Best Buys."

Realizing the value of a liberal arts education, UNI has implemented a rigorous general education curriculum that equips students with a broad understanding and knowledge of how to apply and acquire new information throughout life.

Northern Iowa is a university that values teaching. That means faculty members rather than teaching assistants (graduate students) teach in the classroom. It also means the opportunity to work with faculty members on research and other scholarly activities as an undergraduate student. Small classes enable the University to foster one-to-one working relationships between faculty and students. Nearly 90 percent of UNI's classes have 50 or fewer students.

Northern Iowa's heritage and philosophy place great value on providing a student-centered educational



experience. The University nurtures a premiere learning environment—it is small enough to offer its students individualized attention, yet large enough to provide a variety of resources and opportunities as well as a distinguished faculty.

Students enter the University well-prepared, demonstrated by their selection of high school courses and rank in class. In recent years, over 90 percent of the entering freshmen ranked in the top 50 percent of their high school classes, with about 60 percent ranking in the top 30 percent. The average undergraduate arrives at UNI with an ACT score of 23.

Northern Iowa's 19 men's and women's intercollegiate athletics programs compete at the NCAA Division I level with major conference affiliations. The Panthers boast a nationally recognized coaching staff to maintain consistently competitive programs.

The Northern Iowa campus combines the grandeur of early 1900s architecture with striking, modern building designs that have characterized an impressive growth period over the past dozen years. The attractive, park-like campus contains more than 40 major buildings on 861 acres, yet is compact enough to cross in a 10-minute walk.

UNI is located in Cedar Falls, an inviting and historic community of about 35,000 people. Together with the adjacent city of Waterloo, the metropolitan area has a culturally diverse population of 115,000 and combines big city opportunities with small town friendliness. Cedar Falls/Waterloo is a center for industry, finance, commerce, recreation and cultural activities for northeast Iowa.

Northern Iowa was founded in 1876 and is one of three state-assisted universities administered by the Iowa State Board of Regents. Additional private support is provided by the UNI Foundation and Northern Iowa Alumni Association, representing more than 60,000 alumni in the United States and other countries.



# 1992 NORTHERN IOWA BASEBALL

## CONTENTS

This is Northern Iowa.....	IFC
1992 Outlook.....	2-3
Head Coach Dave Schrage .....	4
Assistant Coaches .....	5
Player Profiles .....	6-12
Missouri Valley Conference .....	13
1992 Rosters .....	14-15
1991 Statistics & Results.....	16-17

Records By Year .....	18
Record Book .....	20-21
Panthers in the Pros .....	19
Series Records.....	19
1992 Opponents .....	22-26
Media Information.....	27
MVC Composite Schedule .....	28
Facilities .....	IBC
1992 Schedule .....	BC

## QUICK FACTS

Location: .....	Cedar Falls, IA 50614
Founded: .....	1876
Enrollment: .....	13,200
Nickname: .....	Panthers
Colors: .....	Purple & Old Gold
President: .....	Dr. Constantine Curris
Director of Athletics: .....	Eldon Miller (Interim)
Associate Directors of Athletics: .....	John "Jersey" Jermier, Dr. Sandra Williamson
Assistant Director of Athletics/Facilities: .....	Jim Egli
NCAA Faculty Representative: .....	Dr. Jack Wilkinson
Sports Information Director: .....	Nancy Justis (319/273-6354)
Assistant Sports Information Director/Baseball: .....	Kevin Kane (319/273-3642)
Sports Information FAX: .....	(319) 273-3602
Affiliation: .....	NCAA Division I
Conference: .....	Missouri Valley (First year)
Head Baseball Coach: .....	Dave Schrage (Creighton '83)
UNI Career & Coaching Record: .....	12-44 (1 yr.)
Assistant Coach: .....	Jim Hallman (Grand View '85)
Student Assistant Coach: .....	Tim O'Neill
Baseball Office Phone: .....	(319) 273-6323
Home Facility: .....	Municipal Stadium, Waterloo (4,277); Panther Park (500)
Dimensions: .....	(Municipal Stadium) 335-360-380-360-335 (Panther Park) 320-360-390-345-312
1991 Record: .....	12-44
1991 Conference Record/Finish: .....	1-7/Fourth in Mid-Continent Gray Division
Starting Position Players Returning/Lost: .....	5/4
Starting Pitchers Returning/Lost: .....	3/3
Lettermen Returning/Lost: .....	10/8
Newcomers: .....	19

### On the cover:

Panther seniors (kneeling l-r) - P.J. Spell, Marty Schilmoeller; (standing l-r) - Jamie Dingus, John Thomas, P.J. Conlon

### Credits:

The 1992 Northern Iowa Baseball Yearbook was written and edited by Kevin Kane, Assistant Director of Sports Information. Design by Merri Moser, UNI Office of Public Relations. Photography by UNI Office of Public Relations and Waterloo Courier.



# 1992 NORTHERN IOWA OUTLOOK

**A**s Northern Iowa begins its first season in the Missouri Valley Conference, second-year head coach Dave Schrage knows what baseball life in the Valley is all about. After having earned all-MVC honors as an outfielder at Creighton 10 years ago and later serving as a Bluejay assistant, Schrage knows what his team is up against in 1992.

The top-notch schedule which has become tradition at Northern Iowa in recent years will not change much. It's just that now those nationally-ranked opponents will come on conference weekends as the Panthers face the likes of Wichita State, Creighton and Indiana State, all pre-season top 25 picks. Schrage faces the task of establishing a winning tradition in a program that has averaged 14 victories over the past four seasons, at the same time competing in the top baseball conference in the Midwest and annually one of the strongest in the nation.

Schrage has begun by bringing in far and away the best recruiting class in school history to go with a nucleus of five returning starters and three starting pitchers. In all, 19 new faces dominate the Panther roster, including 12 freshmen.

"Our main goal this season, because we have so many young players," said Schrage, "is to develop our players to the point where they are going to be competitive in the Missouri Valley in a couple of years."

"At the same time, we're not writing off this season," he added, "and not using our youth as an excuse. Yes, we're young, but we're a lot more talented than we've ever been. You never know how a young team is going to do over the course of a season. I'm sure we're going to win some games that we're not supposed to and lose some we shouldn't."

In order to bring his program to a competitive level in the Missouri Valley, Schrage has begun by concentrating on pitching, defense and speed.

The 1992 Panther pitching staff will be talented but very inexperienced, with many freshmen contributing immediately. The Northern Iowa defense was woeful a year ago committing 128 errors and allowing 104 unearned runs.

"This year, we didn't recruit anyone we didn't think was above average defensively," Schrage said. "There's no question in my mind we'll be 100 percent better defensively this year and, of course, that will help our pitchers tremendously. Not only in the number of runs they allow, but in their confidence, to know they have people behind them that can do the job."

The third area of concentration in the new recruiting class was speed. The Panthers swiped just 47 bases a year with only one player in double figures.

"Offensively, I think we could have a pretty good hitting club," the Panther coach added. "We're not going to be too different from most other teams in that we'll go as far as our pitching will take us."

## PITCHERS

As mentioned earlier, the key to 1992 is the mound corps. Eight of the 14 hurlers on the staff have never thrown an inning in Division I.

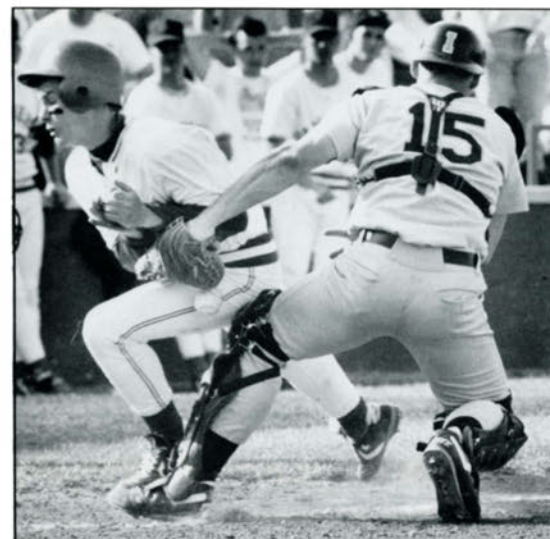
"Although the staff is very inexperienced at this level," Schrage said, "we have so much more quality depth than we did a year ago. If this staff can start to believe in itself early in the season, it could surprise some people."

The only senior on the staff is John Thomas (1-9, 6.65, 4 CG), a righthander who is not overpowering, but keeps his team in the game. He led the team with 69 innings pitched a year ago, but it is unclear whether he will be 100 percent at the start of the '92 season after off-season shoulder problems.

Sophomore Corey Coates (1-2, 5.26 ERA) will be counted on as one of the top starters after earning a spot on the team last year as a walk-on. After joining the rotation the last half of the season, the righthander posted a 4.24 ERA as a starter against some of the Panthers' toughest opponents.

Junior college transfer Chad Rezac (4-1, 2.13 in JC) is a tall righthander who throws exclusively sidearm. He figures to nail down a rotation spot after serving as a closer in his first year of juco ball.

The "big three" freshman trio, "where our pitching future in the Valley lies", will



be integral in the starting rotation. Righthander Mike Irvine and southpaws Jon Goerish and Jeff Johannsen all will make immediate impacts. Irvine was the top high school senior pitcher in Iowa a year ago and possesses an excellent curve ball to go with an already potent fastball and changeup. Goerish is a tall, lanky lefty with equally impressive credentials in the Minnesota high school ranks. Schrage feels Johannsen is a sleeper if he fully recovers from an elbow injury which kept him from pitching his senior season in high school.

Other candidates for starting roles include sophomore lefthander Brett Lagerblade (2-4, 9.19), who started six games a year ago, sophomore Brad Hames, and freshmen Aaron Eberhart and Tom Joecken.

Junior Jason Walke, juco transfer Derek Sandknop, sophomore Dave Freeseaman and freshman southpaw Brian Klingensmith will likely battle for the top middle and short relief roles.

## CATCHER

Senior Marty Schilmoeller (.299, 5 HR, 18 RBI) caught the eye of professional scouts last year with a steady bat and strong, accurate arm. He gunned down 48 percent of potential base stealers and, after a 1-for-19 start, hit .359 the final two months of the season. Schilmoeller is a gritty, take-charge type behind the plate who is not afraid to throw to any base at any time.

Sophomore Brent Kimm (.192) is a solid backup who has improved markedly during the off-season and freshman Jay Johnson is a fine hitter who



# 1992 NORTHERN IOWA OUTLOOK

has room for improvement defensively.

## FIRST BASE

A semi-new look is in store at first base as junior Tom Bach (.269, 3 HR, 20 RBI) moves across the infield from third to take over. After enjoying an outstanding freshman season, Bach slumped a bit last year both in the field and at the plate. If fall practice and pre-season workouts are any indication, the move may be a stroke of genius. Bach has played exceptional defense at first and appears to have regained the hitting stroke that accounted for a .329 average two seasons ago.

The 6-5, 230-pound Joecken will double as a back-up for Bach and take a shot at the relatively short fences in Municipal Stadium and Panther Park. Junior college transfer Erik Skovgard is a lefthanded contact hitter who is making the transition to first from the outfield.

## SECOND BASE

Captain Jamie Dingus (.252, 2 HR, 17 RBI) moved over from third midway through last season to take over at second and provide the Panthers with solid defense.

A streaky hitter, but consistent defensively, Dingus enters the season as the everyday starter, but will have to stave off a strong challenge from freshman Adam Benes. The third in a line of baseball-playing brothers, Benes is a switch hitter who strikes out seldom and makes all the plays defensively.

Junior Joel McCartan will provide depth at second and shortstop after earning 10 starts last season.

## SHORTSTOP

The Panthers will miss the bat of all-conference performer Mike Morony, who also set several school records for assists, but should be improved defensively with the addition of juco transfer P.J. Spell. Spell came to Northern Iowa from Johnson County Community College and earned the respect of his teammates immediately last fall as evidenced by his being voted a team captain. He is solid offensively and is "the most consistent fielder I've ever seen", according to Schrage.

Backing up Spell will be sophomore Eric Olson (.282), who has been moved from second base due to his fine arm strength, and redshirt freshman Scott Bredar.

## THIRD BASE

The third base job was won last fall by freshman Tom Owen, who Schrage feels has the potential to be a great player. Owen batted near the .500 level throughout his high school career and was a pleasant surprise defensively in the fall.

Derek Sandknop can also play third when not pitching and freshman Deron Surkan will likely move over from shortstop.

## OUTFIELD

Senior captain P.J. Conlon (.307, 3 HR, 24 RBI) will start the season in right field after playing center a year ago. Conlon was UNI's most consistent player last year, starting all 56 games and never going more than two games without a hit. He will be the veteran in an otherwise young outfield.

After Conlon, a wealth of young talent will battle for the remaining playing time. Schrage is very high on his young outfield and says the starting picture could change several times.

Freshman Mark Pasqualini will start the season in center field and give the Panthers speed and a strong arm defensively as well as a pesky leadoff hitter.

Left field will likely be occupied by sophomore Tom Evans to start the season, but will be pushed early and often by speedy freshman Myron Glass. Evans is a lefthanded hitter who missed almost all of last season after undergoing major knee surgery. Glass was drafted by the Minnesota Twins in the 35th round last June and played defensive back for the Panther football team last fall.

Freshmen Keven Saunders and Shane Moss have been impressive so far and will be in the thick of any battles for everyday lineup spots.

## DESIGNATED HITTER

Schrage's plan for the designated hitter role is very simple. Put sophomore Dan Thielen's (.260, 5 HR, 20 RBI) name down for the cleanup spot at DH every day. A lefthanded hitter who belted five home runs in the final month of last season, Thielen is an outstanding hitter who Schrage says "has to play every day". He could also see occasional duty in the outfield and at first base.

Righthanded hitters Moss and Sandknop are the most likely to fill in when Thielen is not the DH.

## PERSONNEL CAPSULE

**Letterwinners Returning (10):** 1B/3B Tom Bach; RHP Corey Coates; OF P.J. Conlon; 2B Jamie Dingus; RHP Dave Freese; LHP Brett Lagerblade; C Marty Schilmoeller; OF Dan Thielen; RHP John Thomas; RHP Jason Walke

**Letterwinners Lost (8):** 1B/DH Brian Barnhart; RHP Mike Brandmeyer; OF Brett Elson; RHP Dennis Hanken; 1B Mike Himmelsbach; SS Mike Morony; RHP Brandon Murray; RHP Brett Priestley

**Starting Position Players Returning (5):** OF P.J. Conlon, Sr. (.307, 3 HR, 24 RBI); C Marty Schilmoeller, Sr. (.299, 5 HR, 18 RBI); 1B/3B Tom Bach, Jr. (.269, 3 HR, 20 RBI); OF Dan Thielen, So. (.260, 5 HR, 20 RBI); 2B Jamie Dingus, Sr. (.252, 2 HR, 17 RBI)

**Starting Position Players Lost (4):** SS Mike Morony (.314, 7 HR, 25 RBI); 1B/DH Brian Barnhart (.250, 0 HR, 15 RBI); OF Brett Elson (.226, 1 HR, 9 RBI); 1B Mike Himmelsbach (.203, 0 HR, 11 RBI)

**Pitchers Returning (6):** RH Corey Coates, So. (1-2, 5.26 ERA); RH John Thomas, Sr. (1-9, 6.65 ERA, 4 CG, 69 IP); RH Dave Freese, So. (0-2, 8.27 ERA, 1 SV); LH Brett Lagerblade, So. (2-4, 9.19 ERA, 1 SV); RH Jason Walke, Jr. (0-2, 10.50 ERA); RH Brad Hames, So. (0-0, 18.00 ERA)

**Pitchers Lost (8):** RH Mike Brandmeyer (4-7, 5.00 ERA, 5 CG, 72 K, 68.3 IP); RH Brian Barnhart (0-0, 6.35 ERA); RH Jeff Stickel (0-3, 6.59 ERA); RH B.J. Mayer (1-2, 7.78 ERA); RH Brett Priestley (0-0, 8.31 ERA); RH Dennis Hanken (2-4, 8.32 ERA, 1 SV); RH Brandon Murray (1-6, 9.23 ERA); RH Jason Bennett (0-3, 15.12 ERA)

**Other Returning Players (4):** OF Tom Evans, So.; C Brent Kimm, So.; 2B/SS Joel McCartan, Jr.; 2B/SS Eric Olson, So.

**Key Newcomers (9):** 2B Adam Benes, Fr., Lake Forest, IL; OF Myron Glass, Fr., Kenosha, WI; LHP Jon Goerish, Fr., Keister, MN; RHP Mike Irvine, Fr., Waterloo, IA; LHP Jeff Johannsen, Fr., Eldridge, IA; 3B Tom Owen, Fr., Elkhart, IA; OF Mark Pasqualini, Fr., Melrose, Park, IL; RHP Chad Rezac, Jr., Dolliver, IA; SS P.J. Spell, Sr., Lenexa, KS



# HEAD COACH DAVE SCHRAGE

**D**ave Schrage is in his second year as head coach and has the foundation in place he thinks can re-establish a winning tradition at Northern Iowa. Acclaimed as an excellent recruiter, Schrage has used that talent to bring in, without question, the finest group of newcomers in school history.

Schrage came to Northern Iowa in the summer of 1990 after leading Waldorf College in Forest City, IA, to the junior college sub-regional championship game twice in three years. In three seasons with the Warriors, he posted a 62-67 record and had two players drafted by professional teams.

Already under Schrage's regime at Northern Iowa, the baseball program has moved to the Missouri Valley, one of the top conferences in the nation; moved to a new home in a minor league facility in neighboring Waterloo; and reached agreement on the first-ever radio contract for Panther Baseball.

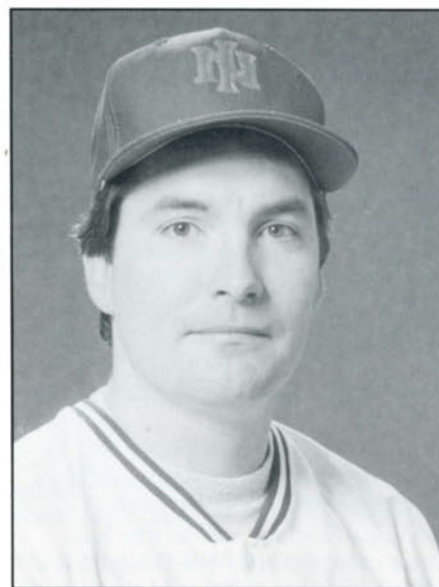
**A** native of Oak Park, IL, Schrage was a four-year starter in center field at Creighton. He led the Missouri Valley in hitting in 1982 with a .400 average and followed that up with a .433 mark the following season. He earned Missouri Valley All-Conference honors in 1982 and was named to the GTE/CoSIDA Academic All-American team in 1983. His .433 average for 1983 ranks

*"He is a great teacher and communicator with his players in all facets of the game . . ."*

him third on Creighton's all-time single-season list while the .400 clip in 1982 ranks sixth. Schrage led the club in stolen bases in 1980 with 15, triples in 1981 with three and hits in 1982 with 66. He also helped establish the Fellowship of Christian Athletes at Creighton in 1979, and is actively involved in the organization at Northern Iowa.

**S**chrage's first collegiate coaching experience came as a graduate assistant at Biscayne College, now known as St. Thomas University, in Miami in 1984 before he returned to his alma mater as an assistant coach to Jim Hendry in 1985 and 1986. At Creighton, he was instrumental in recruiting the class ranked fifth in the nation in 1985, according to Collegiate Baseball. Three players Schrage recruited were drafted by major league teams, the most notable being former Olympian and current Houston Astros catcher Scott Servais. In his four years as a player and two as an assistant at Creighton, Schrage's teams never had a losing season, posting a 201-145 record.

"Dave is as knowledgeable about the entire game as any



player or coach I worked with at Creighton," said Hendry, now Director of Player Development with the Florida Marlins. "He is a great teacher and communicator with his players in all facets of the game, but especially when it comes to playing the outfield, running the bases, and hitting. Dave knows baseball in the Midwest as well as anyone."

He became head coach of the Mt. Gravatt Eagles Club in Brisbane, Australia in 1987, and played and coached for the National League Champion Queensland Rams.

**S**chrage, 30, received his bachelor's degree in Business Administration from Creighton in 1983 and his master's in Sports Administration from Biscayne, also in 1984. He and his wife, Jodie, have a daughter, Kaitlyn.



# ASSISTANT COACHES

## ASSISTANT COACH JIM HALLMAN

In his first year at Northern Iowa, assistant coach Jim Hallman brings a wealth of experience and expertise to the Panther program. Hallman's primary role will be that of pitching coach while assisting in all other phases of the program, including recruiting.

Hallman was appointed at UNI in July, 1991, after serving four years as assistant coach at Johnson County Community College near Kansas City. He also was a staff member in the Physical Education Department and Lifetime Fitness Center at Johnson County and directed the school's summer baseball camps. As the pitching coach at Johnson County, Hallman had three hurlers drafted by major league teams last year.

A native of Urbandale, IA, Hallman was an all-state catcher at West Des Moines Dowling High School in 1981 before moving on to play collegiately at Grand View College in Des Moines. While with the Vikings, he was an All-American catcher as a senior in 1985 while earning All-Midwest honors his final two seasons. He was team captain as a junior and senior, leading his team to the NAIA World Series both years.

"The addition of Jim to our staff is a great boost to our program," said head coach Dave Schrage. "He's a winner all the way down the line. He's never coached or played on a losing team and he already has conveyed that positive mental attitude to our team."

Hallman received his bachelor's degree from Grand View in physical education in 1985 and is currently working toward his master's in Educational Administration at UNI.



## ASSISTANT COACH TIM O'NEILL

Tim O'Neill begins his second season on the Northern Iowa staff while pursuing his bachelor's degree in physical education. He transferred to UNI in 1990 after playing two years at North Iowa Area Community College in Mason City, where he was the starting second baseman. Among his primary duties with the Panthers are infield instruction and scouting of opponents.

He graduated from Mason City Newman High School in 1987, where he was a three-time all-conference selection, all-district as a junior and honorable mention all-state as a junior and senior.

"Tim gives us great stability, particularly with our infielders," said head coach Dave Schrage. "His commitment, hard work and dedication is vital to our program."

O'Neill's coaching experience includes serving as Newman's assistant softball coach since 1990 and assistant football coach since 1988. He is also the coach of the Mason City Cardinals semi-pro team.



# NORTHERN IOWA ATHLETIC ADMINISTRATION



*Dr. Constantine Curris*  
University President



*Eldon Miller*  
Interim Director of  
Athletics



*John "Jersey" Jermier*  
Associate Director of  
Athletics



*Dr. Sandra Williamson*  
Associate Director of  
Athletics



# PANTHER PROFILES



## 5 P.J. CONLON

OF R/L 5-8 165 Sr.  
Iowa City, IA/City

**College:** Team captain who will start the season as the regular rightfielder after playing center field a year ago...earned second team all-conference honors last year

in the Mid-Continent...was the only Panther to start all 56 games last season...one of the team's most consistent hitters who never went more than two games without a hit last season...strung together hitting streaks of 15 and nine games...went 5-for-5 against Mt. Mercy on 4/1/91...his 61 hits a year ago ranks second on UNI's all-time single-season list...led the Panthers last year in at-bats (199), hits (61) and runs (34) while ranking second in RBIs (24) and doubles (9)...his .388 on-base percentage was third among Panther regulars...had 12 two-hit games a year ago including Florida State, South Alabama, Memphis State, Kansas and Iowa...saw part-time duty as a leftfielder/designated hitter as a sophomore...earned academic all-conference honors the past two seasons. **High School:** Lettered in baseball and football at City High. **Personal:** Born July 31, 1969...son of Donald and Patricia Conlon...majoring in physical education.

Year	G	AB	R	H	RBI	2B	3B	HR	SO	BB	SB	AVG
1989	25	56	9	9	4	3	0	0	14	11	1	.161
1990	29	73	12	21	12	3	0	1	12	7	1	.288
1991	56	199	34	61	24	9	2	3	26	20	6	.307
TOT	110	328	55	91	40	15	2	4	52	38	8	.277



## 7 JAMIE DINGUS

2B R/R 5-10 165 Sr.  
Birmingham, IA/Van Buren

**College:** Won the regular job at second base midway through last year and will likely start the 1992 season there...voted team captain for 1992...hit .307 after winning the second

base job...broke out of an 0-for-23 start last season by going 13 for his next 22...went 3-for-3 with a homer and 4 RBIs vs. UW-Milwaukee on 4/6/91...recorded hitting streaks of six and seven games...had eight two-hit games last year, including vs. Kansas, Nebraska and Iowa State...committed only three errors after moving to second base...transferred from Kirkwood Community College two years ago, where he was named to the all-region team. **High School:** Earned all-conference honors in baseball, basketball and football...named to the all-area baseball squad...earned 11 letters in three sports. **Personal:** Born August 14, 1969...son of Dale and Donna Dingus...majoring in physical education.

Year	G	AB	R	H	RBI	2B	3B	HR	SO	BB	SB	AVG
1991	43	1	27	18	32	17	4	0	2	14	14	.252
		127	18	32	17	4	0	2	14	14	8	



## 17 MARTY SCHILMOELLER

C R/R 5-10 180 Sr.  
Granville, IA/Spalding

**College:** Enters the season as UNI's top catcher after earning the top job a year ago...a converted third baseman...after going 1-for-19 to start last season, rebounded to hit .359 the remainder of the year...threw out 48 percent of potential base stealers last year, drawing interest from professional scouts...hit four of his five home runs last year in a stretch of eight games over nine days...the leading returner in slugging percentage (.464)...led the Panthers with a .431 on-base percentage...ended the season going 8-for-15 at the plate...transferred from Arkansas Tech two years ago, where he led the Arkansas Intercollegiate Conference in hitting and was named to the league's all-star team. **High School:** Earned 11 total letters in baseball, basketball and track...received honorable mention all-state as a senior after being named all-conference four times. **Personal:** Born November 15, 1969...son of Denis and Rosemary Schilmoeller...majoring in community health education.

Year	G	AB	R	H	RBI	2B	3B	HR	SO	BB	SB	AVG
1991	40	97	18	29	18	1	0	5	20	12	4	.299



## 21 P.J. SPELL

SS R/R 5-10 175 Sr.  
Lenexa, KS/Shawnee Mission West

**College:** Transferred to UNI this year from Johnson County Community College after lettering three years...hit .340 with eight home runs at JCCC...will be the Panthers' everyday shortstop...voted team captain in his first and only year with the program...led Johnson County to the juco sub-regional championship in 1989 and '90 and the Kansas state title in 1990...played on the USA Juco All-Star Team in Cuba in 1990. **High School:** Lettered as a senior after being named Co-MVP at the state tournament as his team won the championship in 1988...hit .350 for his high school career. **Personal:** Born November 2, 1969...son of Phil and Donna Spell...majoring in marketing/advertising.



# PANTHER PROFILES



## 16 JOHN THOMAS

P R/R 5-11 175 Sr.  
Ames, IA/Ames

**College:** The only returning full-time starter for the Panthers, will be a key member of the rotation again if fully recovered from off-season shoulder injury...hard-luck hurler

who set a school record with nine losses last season despite being one of the team's most consistent performers...earned a decision in 10 of his 11 appearances, including 10 starts, last season...led UNI in innings pitched a year ago with 69...top performance of last season was a six-inning, one-hit win over Kansas...also pitched 8 1/3 innings of two-run ball at Arkansas State...control-type hurler who walked only 21 in 69 innings while striking out just 29...ranked second for the Panthers in '91 with four complete games...highlight of junior campaign was a one-run, seven-hit, complete game victory against Iowa State...transferred three years ago from Ellsworth Community College. **High School:** A first team all-stater who pitched in the Class 4A state title game as a senior and the Iowa High School All-Star Series...also lettered in golf, cross country and track for the Little Cyclones. **Personal:** Born August 11, 1970...son of Tom and Judy Thomas...majoring in marketing.

Year	APP	GS	CG	W	L	SV	IP	H	SO	BB	ER	ERA
1990	12	2	1	2	1	0	30.0	54	4	18	32	9.60
1991	11	10	4	1	9	0	69.0	99	29	21	51	6.65
TOT	23	12	5	3	10	0	99.0	153	33	39	83	7.55



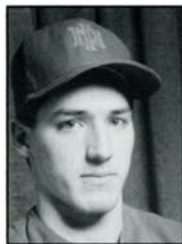
## 14 TOM BACH

1B R/R 5-10 185 Jr.  
Center Point, IA/Center Point

**College:** Slated to move across the infield this season from third to first base...opened last season 7-for-13 before gathering just eight hits in the next month, then hit .403

(.27-67) in the season's final six weeks...had all three home runs in four games, 5/2 and 5/3/91...enjoyed one of the finest seasons by a freshman in UNI history in 1990, hitting .329 and setting a school record for walks in a season with 40 and games played with 58...as a freshman, ranked second on the team in batting average (.329) and first in on-base percentage (.467). **High School:** A great all-around athlete who earned 14 letters at Center Point while earning all-state honors in baseball and football...played on state championship football team and in the Iowa High School All-Star Game...hit over .500 his final two seasons...finished his basketball career as the school's all-time scoring leader...graduated second in class. **Personal:** Born December 24, 1970...son of Linda Bach...majoring in industrial technology.

Year	G	AB	R	H	RBI	2B	3B	HR	SO	BB	SB	AVG
1990	58	170	30	56	17	11	1	1	27	40	2	.329
1991	52	156	21	42	20	6	0	3	33	24	2	.269
TOT	110	326	51	98	37	17	1	4	60	64	4	.301



## 23 JOEL MCCARTAN

2B/SS R/R 5-8 160 Jr.  
Fonda, IA/Fonda

**College:** Started 10 games last season after transferring from Morningside College, where he started at second base and shortstop...will back up primarily at second

base this season...reached base three of seven times in two games against Florida State last year. **High School:** Played in the Iowa High School All-Star Game as a senior...a four-year letterman in baseball and basketball. **Personal:** Born June 22, 1970...son of Don and Carol McCartan...majoring in psychology.

Year	G	AB	R	H	RBI	2B	3B	HR	SO	BB	SB	AVG
1991	17	34	5	5	1	0	0	0	9	2	1	.147



## 13 CHAD REZAC

P R/R 6-3 170 Jr.  
Dolliver, IA/Lincoln Central

**College:** Transfer from Waldorf College where he posted a 4-1 record with a 2.13 ERA and a no-hitter...will start the season as a member of the starting rotation, but also

has served as a closer in his collegiate career. **High School:** An honorable mention all-state selection as a senior...named first team all-conference as a junior and senior...lettered in baseball five times. **Personal:** Born March 28, 1971...son of Clarence and Mary Rose Rezac...majoring in elementary education/physical education.



## 1 JASON WALKER

PR/R 6-2 185 Jr.  
Sumner, IA/Sumner

**College:** Transferred from Waldorf College a year ago and served exclusively in middle relief in his first year with the Panthers...top appearances were a pair of 3 1/3-inning

outings in which he allowed just one run, vs. Kansas and South Alabama...posted a 5.52 ERA in eight of his 10 outings. **High School:** A two-time first team all-conference selection who also lettered in basketball at Sumner. **Personal:** Born June 23, 1971...son of Gary and Carol Walke...majoring in history.

Year	APP	GS	CG	W	L	SV	IP	H	SO	BB	ER	ERA
1991	10	0	0	0	2	0	18.0	35	5	8	21	10.50



# PANTHER PROFILES



## 18 COREY COATES

P R/R 6-0 175 So.  
Manchester, IA/West Delaware

**College:** Enters the season as one of UNI's top starting pitchers...one of the team's most pleasant surprises a year ago after earning a spot as a walk-on in pre-season

tryouts...began last season in the bullpen, but earned starts in his last five games...posted a 4.24 ERA as a starter, vs. Iowa State, Eastern Illinois, Nebraska twice and Briar Cliff...perhaps the most improved pitcher on the staff during the off-season.

**High School:** Named honorable mention all-state as a senior both on the field and in the classroom...earned high school letters and all-conference honors in baseball, basketball and football...named to the all-district baseball team as a senior.

**Personal:** Born February 12, 1972...son of Warren and Jackie Coates...majoring in history.

Year	APP	GS	CG	W	L	SV	IP	H	SO	BB	ER	ERA
1991	9	5	0	1	2	0	25.7	32	15	20	15	5.26



## 25 TOM EVANS

OF L/R 5-8 155 So.  
West Des Moines, IA/Waukee

**College:** Missed nearly all of last season after undergoing major knee surgery, playing in two games and walking in his only plate appearance. **High School:** A three-time all-

conference performer in baseball...hit .469 his senior year and .463 as a junior...named all-conference and academic all-state in football...participated in the state track meet twice on the 4 x 800-meter relay team. **Personal:** Born April 17, 1971...son of Gary and Shirley McClure...majoring in accounting.



## 12 DAVE FREESEMAN

P R/R, 6-3 190 So.  
Ackley, IA/Ackley-Geneva

**College:** Led the Panthers with 20 appearances last season, all out of the bullpen...slated for short and middle relief again this season...possesses an excellent

slider, but struggles with control on occasion...did not allow an earned run in 13 of his 20 appearances...earned his only save against UW-Milwaukee on 4/7/91...walked just six batters in his 13 outings in which he was unscored upon, but 12 in the other seven. **High School:** An outstanding all-around athlete who earned all-conference and all-state recognition in baseball, football, basketball and track...quarterbacked his football team to the state playoffs as a junior and qualified for

the state track meet in the high jump as a senior. **Personal:** Born December 4, 1970...son of Larry and Ann Freese...majoring in biology.

Year	APP	GS	CG	W	L	SV	IP	H	SO	BB	ER	ERA
1991	20	0	0	0	2	1	16.3	20	11	18	15	8.27



## 15 BRAD HAMES

P R/R 6-3 180 So.  
Webster City, IA/Webster City

**College:** Figures to see most of his time as a middle/long reliever, a role he occupied last year as a freshman, but could see duty as a spot starter...allowed one run in 1 2/3

innings vs. Florida State a year ago and gave a run in two innings vs. Iowa State...struggled with control allowing only one hit in five of his seven appearances, but gave 14 walks in those five outings...has made much improvement during the off-season. **High School:** Played in the Iowa All-Star Game as a senior...also played in the state golf meet at Webster City and earned all-conference honors in basketball. **Personal:** Born March 18, 1972...son of Mike and Rosalie Hames...majoring in elementary education.

Year	APP	GS	CG	W	L	SV	IP	H	SO	BB	ER	ERA
1991	7	0	0	0	0	0	8.0	11	2	17	16	18.00



## 20 BRENT KIMM

C R/R 6-1 210 So.  
Norway, IA/Norway

**College:** Started 10 games at catcher a year ago...only home run of the season was a grand slam against Mt. Mercy on 4/1/91...walked eight times in 35 plate

appearances and posted a .429 on-base percentage...a fine defensive catcher with a strong arm who figures to see more playing time this year after much improvement during the off-season. **High School:** Played on three state high school championship teams and a runner-up at Norway...earned honorable mention all-state as a junior and senior...named to the all-district and state all-tournament team twice...played in the high school all-star game as a senior...also lettered in basketball. **Personal:** Born November 3, 1971...son of Donald Kimm and Connie Volden...cousin, Tyson, plays baseball at Creighton...nephew of former major league catcher Bruce Kimm...majoring in business management.

Year	G	AB	R	H	RBI	2B	3B	HR	SO	BB	SB	AVG
1991	16	26	6	5	6	1	0	1	11	8	0	.192



# PANTHER PROFILES

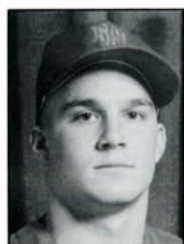


## 22 BRETT LAGERBLADE

P/L/L 6-4 195 So.  
Rock Island, IL/Rock Island

**Career:** Enters the season as a top contender for the starting rotation after earning six starts in 13 appearances a year ago...hoping to rebound from off-season shoulder injury...was the only southpaw on last year's staff...possesses one of the best changeups on the team...threw two complete games, allowing just one earned run in 12 innings in those starts. **High School:** Played on the 1990 Illinois state American Legion championship team that placed second in the Midwest region...threw three no-hitters in Legion competition...lettered two times each in baseball and golf. **Personal:** Born August 29, 1972...son of Bob and D'Ann Lagerblade...majoring in business.

Year	APP	GS	CG	W	L	SV	IP	H	SO	BB	ER	ERA
1991	13	6	2	2	4	1	32.3	54	26	17	33	9.19



## 6 ERIC OLSON

SS R/R 5-11 160 So.  
Nashua, IA/Nashua

**College:** Redshirted two years ago and played in 21 games last season, starting in eight...will likely see more time at shortstop after playing second base last year...hit .282 with a .400 on-base percentage as a freshman...had three multi-hit games—two vs. South Alabama and UW-Milwaukee, and three vs. Wartburg. **High School:** Earned all-state honors as a senior...a two-time all-conference selection...a four-time all-conference wrestler who finished third at state at 145 pounds as a senior. **Personal:** Born January 26, 1971...son of Gary and Jeanne Olson...majoring in social sciences.

Year	G	AB	R	H	RBI	2B	3B	HR	SO	BB	SB	AVG
1991	21	39	6	11	5	1	0	0	14	5	2	.282



## 11 DEREK SANDKNOP

P/3B R/R 6-1 185 So.  
Davenport, IA/West

**College:** Transfer from Muscatine Junior College who is a top candidate for role as UNI's closer. **High School:** Named first team all-state at second base as a senior and fourth team as a pitcher his junior season...was the winning pitcher in the state championship game in 1987...also lettered in football and basketball. **Personal:** Born June 15, 1970...son of William and Deborah Sandknop...majoring in community health.



## 37 ERIK SKOVGARD

1B/OF L/L 6-0 175  
Sioux City, IA/North

**College:** Hit .340 at York Junior College last season. **High School:** Received honorable mention all-state in baseball and basketball...selected all-conference in baseball and basketball twice and All-Northwest Iowa as a junior and senior...led his basketball team to the state tournament in 1990, establishing school records for assists in a game and career...also lettered in football and tennis. **Personal:** Born September 28, 1971...son of Gus and Karen Skovgard...majoring in business finance.



## 34 DAN THIELEN

OF L/L 5-10 165 So.  
Ames, IA/Gilbert

**College:** Will likely start the season batting fourth as the designated hitter after serving as the regular in left field as a freshman...hit .315 in April and May after a .172 average in March...tied for second on last year's team with five home runs...tied for the team lead, being hit by pitches five times...drove in three runs vs. Kansas (4/10/91) and Mt. Mercy (5/3/91)...had two hits in four of the last six games of the season...one of the top pure hitters on the squad who provides some lefthanded punch...bat has to be in the lineup at designated hitter, in the outfield or at first base. **High School:** Named Mid-Iowa Player of the Year twice...named all-state as a senior, all-district twice and first team all-conference three times...also lettered in basketball and golf. **Personal:** Born November 14, 1971...son of Tom and Evie Thielen...major is undecided.

Year	G	AB	R	H	RBI	2B	3B	HR	SO	BB	SB	AVG
1991	52	150	21	39	20	6	1	5	25	18	4	.260



## 4 ADAM BENES

2B B/R 6-0 170 Fr.  
Lake Forest, IL/Lake Forest

**High School:** A two-time all-area and all-conference selection...played on the Legion team that placed third in the Illinois state tournament...hit .419 with a .979 fielding percentage as a senior after batting .456 as a junior...contact hitter who strikes out seldom...will be a candidate for the starting job at second base...also lettered in football and basketball. **Personal:** Born March 12, 1973...son of Chuck and Karen Benes...brother of San Diego Padres pitcher, Andy, and Creighton hurler, Alan...majoring in business.



# PANTHER PROFILES



## 36 SCOTT BREDAR

SS R/R 5-11 155 Fr.  
Bettendorf, IA/Bettendorf

**College:** Redshirted last season. **High School:** Received honorable mention all-state as a junior and senior and first team all-district honors as a senior...lettered in baseball and wrestling. **Personal:** Born May 4, 1972...son of Steve and Jo Ann Bredar...majoring in business management.



## 27 AARON EBERHART

P/1B R/R 6-2 200 Fr.  
West Union, IA/North Fayette

**High School:** A first team all-stater as a senior after receiving honorable mention as a sophomore and junior...named to the all-conference and all-district teams as a junior and senior...hit .466 with 12 homers his senior year and established school records for strikeouts and wins as a pitcher, and home runs and RBIs as a hitter...hurled a shutout in the high school all-star game his senior year...will be a candidate for the starting rotation this season. **Personal:** Born April 2, 1973...son of Don and Judy Eberhart...major is undecided.



## 39 MYRON GLASS

OF R/R 5-11 165 Fr.  
Kenosha, WI/St. Joseph

**College:** Played defensive back, as a kick returner and on special teams as a true freshman on this year's Northern Iowa football team that advanced to the NCAA Division 1-AA playoffs. **High School:** Drafted by the Minnesota Twins in the 35th round of the June, 1991 draft...saw most of his action at shortstop and pitcher in high school, but figures to play outfield in college...an all-metro selection in baseball, football and basketball...hit .272 as a senior, .326 as a junior and .358 as a sophomore...one of the fastest players on the team...a first team all-stater in football. **Personal:** Born January 19, 1973...son of Walter and Eloise Glass...majoring in business administration.



## 32 JON GOERISH

P L/L 6-3 190 Fr.  
Kiester, MN/South Central

**High School:** A Minnesota High School All-Star and all-district pick as a senior...also earned all-conference honors three times...hit .462 as a senior while fanning 73 batters in 43 innings with a 1.95 ERA...also a three-time all-conference choice in football and basketball...named MVP in the Minnesota All-Star Football Game...lanky lefthander who figures to be a mainstay in the Panther rotation. **Personal:** Born August 14, 1972...son of Roger and Beverly Goerish...major is undecided.



## 19 MIKE IRVINE

P R/R 6-2 185 Fr.  
Waterloo, IA/West

**High School:** A first team all-state selection who led the Wahawks to the Class 4A state title as a senior...named all-district and all-conference...hit .400 last year while posting a 12-1 record and 0.60 ERA...possesses an excellent curve ball...will be a member of the starting rotation this season...also lettered twice in basketball. **Personal:** Born August 18, 1973...son of Robert and Claudia Irvine...major is undecided.



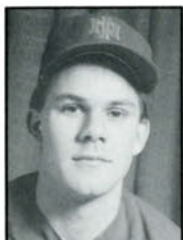
## 30 TOM JOECKEN

P/1B R/R 6-5 225 Fr.  
Waverly, IA/Waverly-Shell Rock

**High School:** Named First Team All-State as a senior after hitting .464...earned all-district honors twice and all-conference three times...played in the Iowa High School All-Star Game last summer...hit .464 last season with six homers and 43 RBIs at the plate while compiling an 8-2 record with a 1.27 ERA as a pitcher...also voted all-conference in football, basketball and track...played on the state championship football team as a junior. **Personal:** Born February 2, 1973...son of Ray and Bonnie Joecken...majoring in elementary education.



# PANTHER PROFILES



## 31 JEFF JOHANNSEN

P L/L 6-3 185 Fr.  
Eldridge, IA/North Scott

**High School:** A member of the Iowa AAU Select Team as a junior as well earning selection to all-district and honorable mention all-state...did not pitch much of his senior season due to elbow injury, but was still voted second team all-conference as a utility player...recorded a 4-2 mark with a 1.43 ERA as a junior with 71 strikeouts and 24 hits allowed in 44 innings pitched...figures to be a top candidate for the starting rotation if healthy...also lettered in golf and basketball, where he played in the Quad Cities All-Star Classic...holds five basketball school records at North Scott. **Personal:** Born June 10, 1973...son of Richard and Debra Johannsen...major is undecided.



## 38 JAY JOHNSON

C R/R 5-11 185 Fr.  
Ames, IA/Ames

**High School:** A second team all-state catcher as a junior and senior who also earned all-district, all-metro and all-conference honors twice...played on the conference championship team...named MVP at the Iowa High School All-Star Game last summer...hit .404 his senior year and .346 as a junior...also earned all-metro and all-conference honors in football. **Personal:** Born April 20, 1973...son of Phil and Sandy Johnson...majoring in accounting.



## 35 BRIAN KLINGENSMITH

P L/L 5-10 160 Fr.  
Menville, IA/Woodbury Central

**High School:** Named to the first all-conference team as a junior and senior...was nominated to play in Iowa High School All-Star Game but could not compete due to illness...played on the state championship team as a freshman...tossed a no-hitter his senior season...will be one of UNI's top lefthanders out of the bullpen...was also an all-state receiver in football and three-time state wrestling qualifier. **Personal:** Born August 26, 1972...son of Roger and Leah Klingensmith...majoring in elementary education.



## 9 SHANE MOSS

OF R/R 5-11 175 Fr.  
Muscatine, IA/Muscatine

**High School:** A two-time all-stater who also was selected to the all-district and all-conference teams three times...named First Team All-State last year after hitting .397...played in the 1990 Iowa High School tournament and the 1991 Iowa All-Star Game...earned three letters in baseball and two in football. **Personal:** Born December 2, 1972...son of Judy Petersen...majoring in chemical marketing.



## 24 TOM OWEN

3B R/R 6-0 175 Fr.  
Elkhart, IA/North Polk

**High School:** A first team all-stater who enters the season as UNI's starter at third...batted .547 as a senior, .454 as a junior and .438 as a sophomore...named to the state all-tournament team as a sophomore and senior...a three-time first team all-conference selection who was also named to the all-district team twice and third team all-state as a junior...earned 14 high school letters in baseball, football, basketball and track...a third team all-stater in football who led Class 2A in kickoff return yardage in 1990. **Personal:** Born February 13, 1973...son of Don and Sue Owen...majoring in computer science.



## 29 MARK PASQUALINI

OF R/R 5-9 160 Fr.  
Melrose Park, IL/Fenwick

**High School:** Named first team all-conference and all-area as a senior after hitting .389 with a .471 on-base average and 23 stolen bases...played on the regional championship team...played in the Chicagoland Catholic League-Public League All-Star Game...split time between center field and shortstop his senior year, but is projected as UNI's everyday centerfielder to start the season...named to the Chicago Sun-Times Top 100 and the Chicago Tribune's Top Prospects lists...played at Fenwick High, the alma mater of Panther head coach Dave Schrage. **Personal:** Born March 29, 1973...son of Sharon Pasqualini...majoring in accounting.



# PANTHER PROFILES



## 33 KEVEN SAUNDERS

OF R/R, 6-0 185 Fr.  
Minnetonka, MN/Minnetonka

**High School:** Batted .386 as a senior and led his team in every offensive category except home runs and RBIs batting leadoff...a member of the Mickey Mantle and American Legion state championship teams...named to USA Today's Top Pro Prospects list...high school team was ranked eighth in the nation by USA Today...will use his great speed and contact hitting to battle for a starting outfield spot this season. **Personal:** Born February 11, 1973...son of Mark and Rolande Saunders...majoring in criminology.



## 26 DERON SURKAN

SS/3B R/R, 6-0 185 Fr.  
Thunder Bay, Ontario/Hammerskjold

**High School:** Played in Junior Men's League with the Thunder Bay Expos three years as a third baseman and pitcher...high school did not have a baseball program...was an all-conference player in football and played on a conference championship hockey team. **Personal:** Born September 22, 1972...son of Ernie and Judy Surkan...majoring in business management.

## OTHER PANTHERS TO WATCH



## RON HAGEMAN

P R/R  
6-3 185 Fr.  
Northern University (IA) High School



## ARICK MEINERT

1B R/R  
5-10 190 Fr.  
Ankeny (IA) High School



## MATT HARVEY

OF/P R/R  
6-0 190 So.  
North Polk (IA) High School



## ERIC SHELTON

OF R/R  
5-10 170  
Waukon (IA) High School



## CHRIS HONKOMP

P L/L  
6-4 210 Fr.  
Maquoketa Valley (IA) High School



## DAVE SUSONG

OF R/R  
5-10 160 Fr.  
Waterloo (IA) West High School



## JEFF KRAGER

1B/C R/R  
6-4 220 So.  
Davenport (IA) North High School



# THE MISSOURI VALLEY CONFERENCE

**A** new era began in Northern Iowa athletics last July 1, when the University's men's intercollegiate programs officially became affiliated with the Missouri Valley Conference.

Without question, the move to the Missouri Valley will affect the Panther baseball program most of all. The Valley has long been considered one of the top baseball conferences in America and the best in the Midwest.

MVC members have been especially prominent on the national collegiate baseball scene in recent years. Following Wichita State's national championship in 1989, as many as three Valley teams have been ranked among the nation's top 25 in each of the last three years, including this year's pre-season polls. Last year, two MVC teams advanced to the College World Series as Wichita State and Creighton both made collegiate baseball's Final Four, with WSU finishing second and Creighton tied for third.

A commitment to excellence, both in the classroom and the athletic arena, has been a trademark of the Missouri Valley Conference since its inception in 1907. In addition to the aforementioned success on the national baseball scene, the athletic accomplishments of MVC institutions through the years have included four



national basketball championships and 17 trips to the NCAA Final Four.

MVC athletes and coaches have become familiar names during the conference's illustrious history, both during their collegiate careers and, for some, professional careers which have followed stardom in the

Missouri Valley. Current major leaguers who played their collegiate ball in the MVC include Kirby Puckett, Joe Carter, Dave Steib, Steve Finley, Charlie O'Brien, Dennis Rasmussen, Jim Lindeman, Mike Dunne, Dave Bergman, Phil Stephenson, Scott Servais and Zane Smith.

MVC basketball alums include Larry Bird, Xavier McDaniel, Hersey Hawkins, Benoit Benjamin, Oscar Robertson, Chet Walker, Walt Frazier, Wes Unseld and Paul Silas.

In recent years, the Valley has been growing and expanding. In addition to Northern Iowa joining the league this year, Southwest Missouri State is in just its second year in the conference. They are the newest members of the MVC, which also includes Bradley, Creighton, Drake, Illinois State, Indiana State, Southern Illinois, Tulsa and Wichita State.

## 1991 MISSOURI VALLEY ALL-CONFERENCE TEAMS

### First Team

1B - Jason White, Wichita State  
2B - Billy Hall, Wichita State  
SS - Chris Wimmer, Wichita State  
3B - Scott Stahoviak, Creighton  
C - Doug Mirabelli, Wichita State  
DH - Steve Hinton, Creighton  
OF - Doug Shields, Southern Illinois  
OF - Jim Audley, Wichita State  
OF - Matt Brewer, Southwest Missouri State  
OF - Dax Jones, Creighton  
UT - Mike Jones, Wichita State  
UT - Evan Pratte, Southwest Missouri State  
P - Kennie Steenstra, Wichita State  
P - Mike Heathcott, Creighton  
P - Tyler Green, Wichita State  
RP - Alan Levine, Southern Illinois

### Second Team

1B - Chad McConnell, Creighton  
Todd Schroeder, Illinois State  
2B - Dave Doster, Indiana State  
SS - Bobby Langer, Creighton  
3B - Bill Mueller, Southwest Missouri State  
C - Ryan Martindale, Creighton  
OF - Brad James, Illinois State  
OF - Todd Dreifort, Wichita State  
OF - Rick Freehling, Creighton  
OF - Jeff Nelson, Southern Illinois  
OF - John LaMar, Indiana State  
UT - Mike Farrell, Indiana State  
UT - Mike McCafferty, Creighton  
P - Alan Benes, Creighton  
P - Casey Whitten, Indiana State  
P - Darren Dreifort, Wichita State  
RP - John Trisler, Indiana State

1991 MVC Player of the Year - Scott Stahoviak, Creighton

1991 MVC Pitcher of the Year - Kennie Steenstra, Wichita State

1991 MVC Coach of the Year - Gene Stephenson, Wichita State

## FINAL 1991 MISSOURI VALLEY BASEBALL STANDINGS

School	Overall W-L	Conference W-L
Wichita State	66-13	21-3
Creighton	51-22	16-8
Indiana State	42-23	15-9
SW Missouri State	40-22	14-10
Southern Illinois	27-36	8-16
Bradley	26-36	7-17
Illinois State	27-33	5-19



# 1992 NORTHERN IOWA NUMERICAL ROSTER

No.	Name	Pos.	Cl.	B/T	Ht.	Wt.	Hometown/High School
1	Jason Walke*	P	Jr.	R/R	6-2	185	Sumner, IA/Sumner
4	Adam Benes	2B	Fr.	S/R	6-0	170	Lake Forest, IL/Lake Forest
5	P.J. Conlon**	OF	Sr.	R/L	5-8	165	Iowa City, IA/City
6	Eric Olson	2B	So.	R/R	5-11	160	Nashua, IA/Nashua
7	Jamie Dingus*	2B	Sr.	R/R	5-10	165	Birmingham, IA/Van Buren
9	Shane Moss	OF	Fr.	R/R	5-11	175	Muscatine, IA/Muscatine
11	Derek Sandknop	P/3B	So.	R/R	6-1	185	Davenport, IA/West
12	Dave Freeseaman*	P	So.	R/R	6-3	190	Ackley, IA/Ackley-Geneva
13	Chad Rezac	P	Jr.	R/R	6-3	170	Dolliver, IA/Lincoln Central
14	Tom Bach**	1B	Jr.	R/R	5-10	185	Center Point, IA/Center Point
15	Brad Hames	P	So.	R/R	6-3	180	Webster City, IA/Webster City
16	John Thomas**	P	Sr.	R/R	5-11	175	Ames, IA/Ames
17	Marty Schilmoeller*	C	Sr.	R/R	5-10	180	Granville, IA/Spalding
18	Corey Coates*	P	So.	R/R	6-0	175	Manchester, IA/West Delaware
19	Mike Irvine	P	Fr.	R/R	6-2	185	Waterloo, IA/West
20	Brent Kimm	C	So.	R/R	6-1	210	Norway, IA/Norway
21	P.J. Spell	SS	Sr.	R/R	5-10	175	Lenexa, KS/Shawnee Mission West
22	Brett Lagerblade*	P	So.	L/L	6-4	195	Rock Island, IL/Rock Island
23	Joel McCartan	2B/SS	Jr.	R/R	5-8	160	Fonda, IA/Fonda
24	Tom Owen	3B	Fr.	R/R	6-0	175	Elkhart, IA/North Polk
25	Tom Evans	OF	So.	L/R	5-8	155	West Des Moines, IA/Waukee
26	Deron Surkan	SS/3B	Fr.	R/R	6-0	185	Thunder Bay, Ontario/Hammarskjold
27	Aaron Eberhart	P/1B	Fr.	R/R	6-2	200	West Union, IA/North Fayette
29	Mark Pasqualini	OF	Fr.	R/R	5-9	160	Melrose Park, IL/Fenwick
30	Tom Joecken	P/1B	Fr.	R/R	6-5	225	Waverly, IA/Waverly-Shell Rock
31	Jeff Johannsen	P	Fr.	L/L	6-3	185	Eldridge, IA/North Scott
32	Jon Goerish	P	Fr.	L/L	6-3	190	Kiester, MN/South Central
33	Keven Saunders	OF	Fr.	R/R	6-0	185	Minnetonka, MN/Minnetonka
34	Dan Thielen*	OF	So.	L/L	5-10	165	Ames, IA/Gilbert
35	Brian Klingensmith	P	Fr.	L/L	5-10	160	Moville, IA/Woodbury Central
36	Scott Bredar	SS	Fr.	R/R	5-11	155	Bettendorf, IA/Bettendorf
37	Erik Skovgard	1B/OF	So.	L/L	6-0	175	Sioux City, IA/North
38	Jay Johnson	C	Fr.	R/R	5-11	185	Ames, IA/Ames
39	Myron Glass	OF	Fr.	R/R	5-11	165	Kenosha, WI/St. Joseph

\* Denotes letters earned

Head Coach: 3 Dave Schrage  
Assistant: 8 Jim Hallman  
Student Assistant: 2 Tim O'Neill



# 1992 NORTHERN IOWA ALPHABETICAL ROSTER

No.	Name	Pos.	Cl.	B/T	Ht.	Wt.	Hometown/High School
14	Tom Bach**	1B	Jr.	R/R	5-10	185	Center Point, IA/Center Point
4	Adam Benes	2B	Fr.	S/R	6-0	170	Lake Forest, IL/Lake Forest
36	Scott Bredar	SS	Fr.	R/R	5-11	155	Bettendorf, IA/Bettendorf
18	Corey Coates*	P	So.	R/R	6-0	175	Manchester, IA/West Delaware
5	P.J. Conlon**	OF	Sr.	R/L	5-8	165	Iowa City, IA/City
7	Jamie Dingus*	2B	Sr.	R/R	5-10	165	Birmingham, IA/Van Buren
27	Aaron Eberhart	P/1B	Fr.	R/R	6-2	200	West Union, IA/North Fayette
25	Tom Evans	OF	So.	L/R	5-8	155	West Des Moines, IA/Waukee
12	Dave Freeseaman*	P	So.	R/R	6-3	190	Ackley, IA/Ackley-Geneva
39	Myron Glass	OF	Fr.	R/R	5-11	165	Kenosha, WI/St. Joseph
32	Jon Goerish	P	Fr.	L/L	6-3	190	Kiester, MN/South Central
15	Brad Hames	P	So.	R/R	6-3	180	Webster City, IA/Webster City
19	Mike Irvine	P	Fr.	R/R	6-2	185	Waterloo, IA/West
30	Tom Joecken	P/1B	Fr.	R/R	6-5	225	Waverly, IA/Waverly-Shell Rock
31	Jeff Johannsen	P	Fr.	L/L	6-3	185	Eldridge, IA/North Scott
38	Jay Johnson	C	Fr.	R/R	5-11	185	Ames, IA/Ames
20	Brent Kimm	C	So.	R/R	6-1	210	Norway, IA/Norway
35	Brian Klingensmith	P	Fr.	L/L	5-10	160	Moville, IA/Woodbury Central
22	Brett Lagerblade*	P	So.	L/L	6-4	195	Rock Island, IL/Rock Island
23	Joel McCartan	2B/SS	Jr.	R/R	5-8	160	Fonda, IA/Fonda
9	Shane Moss	OF	Fr.	R/R	5-11	175	Muscatine, IA/Muscatine
6	Eric Olson	2B/SS	So.	R/R	5-11	160	Nashua, IA/Nashua
24	Tom Owen	3B	Fr.	R/R	6-0	175	Elkhart, IA/North Polk
29	Mark Pasqualini	OF	Fr.	R/R	5-9	160	Melrose Park, IL/Fenwick
13	Chad Rezac	P	Jr.	R/R	6-3	170	Dolliver, IA/Lincoln Central
11	Derek Sandknop	P/3B	So.	R/R	6-1	185	Davenport, IA/West
33	Keven Saunders	OF	Fr.	R/R	6-0	185	Minnetonka, MN/Minnetonka
17	Marty Schilmoeller*	C	Sr.	R/R	5-10	180	Granville, IA/Spalding
37	Erik Skovgard	1B/OF	So.	L/L	6-0	175	Sioux City, IA/North
21	P.J. Spell	SS	Sr.	R/R	5-10	175	Lenexa, KS/Shawnee Mission West
26	Deron Surkan	SS/3B	Fr.	R/R	6-0	185	Thunder Bay, Ontario/Hammarskjold
34	Dan Thielen*	OF	So.	L/L	5-10	165	Ames, IA/Gilbert
16	John Thomas*	P	Sr.	R/R	5-11	175	Ames, IA/Ames
1	Jason Walke*	P	Jr.	R/R	6-2	185	Sumner, IA/Sumner

\* Denotes letters earned

---

Head Coach: 3 Dave Schrage  
 Assistant: 8 Jim Hallman  
 Student Assistant: 2 Tim O'Neill



# 1991 UNI INDIVIDUAL STATISTICS

## BATTING

PLAYER	BA	G/GS	AB	R	H	RBI	2B	3B	HR	SB/SBA	SB%	BB	SO	HBP	S/SF	TB/SLUG%	OB	PCT.
Mike Morony	.314	56/55	185	28	58	25	10	2	7	11/13	.846	25	29	1	5/1	93/503	91/218	.417
P.J. Conlon	.307	56/56	199	34	61	24	9	2	3	6/11	.545	20	26	0	3/1	83/417	87/224	.388
Marty Schilmoeller	.299	40/34	97	18	29	18	1	0	5	4/5	.800	12	20	5	2/1	45/464	50/116	.431
Eric Olson	.282	21/8	39	6	11	5	1	0	0	2/2	1.000	5	14	1	0/0	12/308	18/45	.400
Bryan Dixon	.281	33/23	64	6	18	8	4	0	0	3/5	.600	8	20	1	0/1	22/344	27/74	.365
Tom Bach	.269	52/49	156	21	42	20	6	0	2	2/4	.500	24	33	1	2/3	57/365	69/186	.371
Dan Thielen	.260	52/49	150	21	39	20	6	1	5	4/4	1.000	18	25	5	1/3	62/413	67/177	.379
Jamie Dingus	.252	43/39	127	18	32	17	4	0	2	8/9	.889	14	14	1	4/3	42/331	54/149	.362
Brian Barnhart	.250	51/43	140	11	35	15	4	0	0	1/2	.500	12	12	1	2/4	39/279	57/159	.358
Brett Elson	.226	42/35	115	15	26	9	3	0	1	2/3	.667	5	16	0	1/0	32/278	36/121	.298
Brad Hansen	.220	25/17	50	5	11	5	1	0	0	0/0	.000	7	11	0	1/0	12/240	18/58	.310
Chad Rose	.207	32/26	82	15	17	7	1	0	1	1/2	.500	9	27	2	0/0	21/256	30/91	.330
Mike Himmelsbach	.203	47/43	128	18	26	11	9	0	0	2/2	1.000	18	28	0	2/2	35/273	46/150	.307
Brent Kimm	.192	16/10	26	6	5	6	1	0	1	0/0	.000	8	11	1	0/0	9/346	15/35	.429
Joel McCartan	.147	17/10	34	5	5	1	0	0	0	1/2	.500	2	9	0	0/1	5/147	8/37	.216
Matt Harvey	.100	15/7	20	1	2	2	2	0	0	0/0	.000	5	6	0/1	4/200	4/200	7/26	.269
Brad Hames	.000	1/0	0	1	0	0	0	0	0	0/0	.000	0	0	0	0/0	0/000	0/0	.000
Tom Evans	.000	2/0	0	0	0	0	0	0	0	0/0	.000	1	0	0	0/0	0/000	1/1	1.000
UNI	.259	56/56	1612	229	417	193	62	5	28	47/64	.734	193	301	19	23/21	573/355	681/1867	.365
OPPONENT TOTALS	.331	56/56	1726	467	571	400	117	24	56	128/166	.771	287	239	52	24/27	904/524	1109/2117	.524

## PITCHING

PITCHER	ERA	G/GS	W	L	PCT	SAVE	CG	SHTOUT	IP	H	R	ER	BB	SO	IBB	HB	WP	BK
Mike Brandmeyer	5.00	11/11	4	7	.364	0	5	0	68.3	56	47	38	55	72	0	10	8	0
Corey Coates	5.26	9/5	1	2	.333	0	0	0	25.7	32	21	15	20	15	0	4	3	0
Brian Barnhart	6.35	5/0	0	0	.000	0	0	0	11.3	12	8	8	6	2	0	0	0	0
Jeff Stickel	6.59	6/2	0	3	.000	0	0	0	13.7	21	16	10	8	8	0	3	1	1
John Thomas	6.65	11/10	1	9	.100	0	4	0	69.0	99	63	51	21	29	0	9	6	0
B.J. Mayer	7.78	6/3	1	2	.333	0	1	1	19.7	24	27	17	27	8	0	1	4	0
Dave Freeseaman	8.27	20/0	0	2	.000	1	0	0	16.3	20	17	15	18	11	0	1	1	0
Brett Priestley	8.31	18/0	0	0	.000	0	0	0	17.3	26	22	16	4	6	0	2	1	0
Dennis Hanken	8.32	14/7	2	4	.333	1	1	1	44.3	71	50	41	14	28	1	7	6	0
Brett Lagerblade	9.19	13/6	2	4	.333	1	2	0	32.3	54	46	33	17	26	0	6	4	0
Brandon Murray	9.23	12/9	1	6	.143	0	1	0	52.7	79	67	54	46	21	0	0	5	1
Jason Walke	10.50	10/0	0	2	.000	0	0	0	18.0	35	26	21	8	5	0	3	1	0
Jason Bennett	15.12	8/4	0	3	.000	0	1	0	16.7	31	37	28	26	6	0	1	8	0
Brad Hames	18.00	7/0	0	0	.000	0	0	0	8.0	11	20	16	17	2	0	5	2	0
UNI	7.90	56/56	12	44	.214	3	15	2	413.3	571	467	363	287	239	1	52	50	2
OPPONENT TOTALS	3.73	56/56	44	12	.786	11	18	6	432.3	417	229	179	193	301	0	19	35	5

SCORE BY INNINGS	1	2	3	4	5	6	7	8	9	EXTRA	TOTAL	DOUBLE PLAYS	LEFT ON BASE
UNI	25	31	41	37	29	31	21	12	2	0	229	50	357
OPPONENT TOTALS	64	47	68	58	80	75	36	32	6	1	467	63	393

OVERALL TEAM RECORD 12-44-0  
Mid-Continent 1-7-0



# 1991 NORTHERN IOWA RESULTS

DATE	OPPONENT	SCORE	ATTEND	WINNING PITCHER	LOSING PITCHER	RUNS-HITS-ERRORS
2/28	Missouri	1-27 L	430 A D	Dettmer (6.0)	Brandmeyer (2.1)	1-5-5 27-21-0
3/7	Kansas State	5-14 L	100 A D	Driskill (5.0)	Hanken (4.0)	5-11-4 14-18-1
3/8	Kansas	8-18 L	100 A D	Walker (3.0)	Coates (0.1)	8-6-3 18-22-3
3/9	Kansas	4-16 L	125 A D	Massey (5.0)	Mayer (4.2)	4-8-8 16-12-1
3/10	Kansas	5-7 L	100 A D	Meyer (5.0)	Thomas (8.0)	5-10-1 7-8-2
3/16	#Memphis State	0-4 L	220 A D	Jones (9.0)	Murray (8.0)	0-7-1 4-8-0
3/17	#Memphis State	0-13 L	154 A D	Stewart (6.0)	Hanken (4.2)	0-3-1 13-15-1
3/18	#South Alabama	2-16 L	332 A N	Oberkirch (6.0)	Lagerblade (2.2)	2-9-5 16-15-0
3/19	#Florida State	2-11 L	1289 A N	Lewis (6.0)	Thomas (5.1)	2-9-6 11-11-1
3/20	#Florida State	0-9 L	1116 A N	Harris (5.0)	Brandmeyer (7.0)	0-4-4 9-6-1
3/21	#Florida State	0-3 L	1007 A N	Wasdin (5.0)	Murray (7.0)	0-3-0 3-6-1
3/22	#South Alabama	6-7 L	287 A N	Kerley (5.0)	Hanken (2.2)	6-12-1 7-9-1
3/23	#South Alabama	2-19 L	334 A D	Patrick (3.0)	Lagerblade (2.2)	2-4-7 19-16-0
3/24	#Arkansas State	1-2 L	150 A D	Gordon (9.0)	Thomas (8.1)	1-4-0 2-12-3
3/26	Wartburg	1-12 L	165 H D	Kelley (6.0)	Murray (2.2)	1-4-1 12-15-0
3/26	Wartburg	8-2 W	165 H D	Brandmeyer (7.0)	Beach (3.0)	8-7-3 2-6-2
3/30	Upper Iowa	7-9 L	60 H D	Seabrooke (4.1)	Walke (2.1)	7-10-2 9-15-3
3/30	Upper Iowa	5-1 W	45 H D	Brandmeyer (7.0)	Lopez (2.1)	5-8-1 1-3-1
4/1	Mt. Mercy	15-19 L	115 H D	Tauber (4.0)	Bennett (1.2)	15-15-4 19-14-6
4/1	Mt. Mercy	4-2 W	115 H D	Lagerblade (5.0)	Steffen (3.1)	4-5-2 2-5-2
4/2	Kansas State	2-18 L	95 H D	Driskill (5.0)	Murray (6.0)	2-6-3 18-20-1
4/3	Iowa	2-5 L	279 A D	Anderson (5.0)	Brandmeyer (6.0)	2-6-3 5-7-0
4/4	Iowa	3-7 L	210 H D	Nahas (5.0)	Thomas (6.2)	3-9-2 7-14-1
4/6	Wisconsin-Milwaukee	7-0 W	185 H D	Hanken (7.0)	Hetland (6.0)	7-9-0 0-5-2
4/6	Wisconsin-Milwaukee	9-14 L	185 H D	Geary (3.0)	Stickel (1.0)	9-10-4 14-11-2
4/7	Wisconsin-Milwaukee	6-5 W	190 H D	Brandmeyer (6.2)	Robinson (6.0)	6-7-2 5-6-3
4/7	Wisconsin-Milwaukee	5-1 W	195 H D	Lagerblade (7.0)	Daniels (6.0)	5-10-3 1-6-3
4/8	Nebraska	4-5 L	123 A D	Mosser (7.0)	Walke (1.0)	4-8-2 5-7-1
4/8	Nebraska	4-6 L	123 A D	Eckley (5.0)	Stickel (3.1)	4-7-0 6-8-3
4/10	Kansas	7-3 W	70 H D	Thomas (6.0)	Meyer (2.0)	7-12-3 3-3-2
4/14	*Western Illinois	3-10 L	117 A D	Stanley (7.0)	Lagerblade (1.1)	3-6-0 10-10-1
4/14	*Western Illinois	4-1 W	117 A D	Brandmeyer (8.0)	Aeilts (7.2)	4-7-0 1-3-1
4/15	*Western Illinois	1-12 L	112 A D	McChesney (7.0)	Hanken (3.2)	1-6-1 12-14-0
4/15	*Western Illinois	8-9 L	112 A D	Reynolds (7.0)	Thomas (6.0)	8-8-0 9-12-1
4/17	Iowa State	4-10 L	212 H D	Kaufman (6.0)	Murray (3.0)	4-9-3 10-11-4
4/17	Iowa State	2-13 L	212 H D	Nichol (3.0)	Bennett (2.1)	2-2-2 13-9-1
4/21	Northern Illinois	2-7 L	147 H D	Brown (7.0)	Brandmeyer (7.0)	2-6-1 7-9-1
4/21	Northern Illinois	4-5 L	147 H D	Horlock (4.0)	Thomas (8.1)	4-5-3 5-10-1
4/23	Iowa State	8-13 L	250 A D	Ruess (4.0)	Murray (1.0)	8-9-3 13-9-2
4/23	Iowa State	1-11 L	250 A D	Kasperski (5.0)	Lagerblade (2.1)	1-6-2 11-13-0
4/24	Nebraska	3-8 L	70 H D	Mosser (7.0)	Coates (3.1)	3-7-1 8-7-0
4/24	Nebraska	2-10 L	70 H D	Bullock (9.0)	Stickel (5.0)	2-8-1 10-16-0
4/26	Northern Illinois	11-6 W	105 A D	Murray (5.0)	Young (3.2)	11-10-1 6-6-2
4/26	Northern Illinois	0-9 L	105 A D	Duffy (7.0)	Mayer (4.0)	0-4-5 9-7-0
4/27	*Eastern Illinois	2-4 L	130 A D	Kundrat (6.1)	Thomas (6.0)	2-10-1 4-8-1
4/27	*Eastern Illinois	0-4 L	130 A D	Conner (7.0)	Brandmeyer (6.0)	0-2-1 4-8-0
4/28	*Eastern Illinois	4-5 L	145 A D	Fahey (3.2)	Freeseaman (2.0)	4-9-2 5-10-1
4/28	*Eastern Illinois	3-4 L	145 A D	Jablonski (9.0)	Freeseaman (2.0)	3-8-0 4-11-1
5/2	Grand View	6-7 L	56 H D	Steffes (9.0)	Thomas (7.0)	6-9-1 7-11-2
5/2	Creighton	1-9 L	56 H D	Harris (2.0)	Bennett (7.0)	1-2-2 9-14-3
5/3	Mt. Mercy	11-0 W	90 A D	Mayer (7.0)	Lucky (5.0)	11-11-1 0-4-0
5/3	Mt. Mercy	1-2 L	115 A D	Graham (1.0)	Brandmeyer (7.0)	1-6-2 2-6-0
5/4	Briar Cliff	9-8 W	88 H D	Hanken (2.0)	Schon (1.2)	9-12-6 8-8-1
5/4	Briar Cliff	4-1 W	88 H D	Coates (6.2)	Albrecht (5.0)	4-7-1 1-5-1
5/10	&Illinois at Chicago	6-12 L	150 A D	Lichtenstein (5.0)	Thomas (3.1)	6-8-2 12-16-3
5/11	&Western Illinois	4-12 L	150 A D	Aeilts (8.0)	Brandmeyer (4.1)	4-12-5 12-10-2

\*Mid-Continent

#Spring Trip

&Mid-Continent Tournament



# YEAR-BY-YEAR RECORDS

Year	Record	Pct.	Coach
1893	1-1	.500	Capt. Avery
1894	1-2	.333	Capt. Avery
1895	2-1	.667	J.E. Vance
1896	1-1	.500	J.E. Vance
1897	2-2	.500	J.E. Vance
1898	2-1	.667	Throthe
1899	3-2	.600	Sutherland
1900	2-1	.667	No Coach
1901	4-3	.571	No Coach
1902	2-7	.222	Capt. Cotten
1903	No Baseball		
1904	No Baseball		
1905	2-1	.667	R.B. Leland
1906	1-7	.125	Charles Pell
1907	4-2	.667	John Fitzgerald
1908	2-5	.286	Roy Seymour
1909	No Baseball		
1910	No Baseball		
1911	2-5-1	.313	Roy Seymour
1912	5-6	.455	H.F. Pasini
1913	4-3-1	.563	H.F. Pasini
1914	4-4	.500	H.G. Lundeman
1915	1-3	.250	Roy Seymour
1916	6-4	.600	Roy Seymour
1917	3-4	.429	Roy Seymour
1918	4-3	.571	Van Oot
1919	4-3	.571	A.D. Dickinson
1920	3-3	.500	Abram James
1921	3-3	.500	Abram James
1922	4-5	.444	L.L. Mendenhall
1923	6-1	.857	L.L. Mendenhall
1924	6-0	1.000	Osborne Cowles
1925	7-3	.700	Roscoe Minton
1926	6-4	.600	L.W. Whitford
1927	6-4	.600	L.W. Whitford
1928	11-1	.917	L.W. Whitford
1929	9-4-1	.679	L.W. Whitford
1930	10-2	.833	L.W. Whitford
1931	1-13	.071	L.W. Whitford
1932	6-6	.500	L.W. Whitford
1933	5-3	.625	L.W. Whitford
1934	6-4	.600	L.W. Whitford
1935	4-8	.333	L.W. Whitford
1936	8-6	.571	L.W. Whitford
1937	9-4	.692	L.W. Whitford
1938	1-11	.083	L.W. Whitford
1939	9-7	.563	L.W. Whitford
1940	8-4-1	.654	L.W. Whitford
1941	10-7	.588	L.W. Whitford
1942	6-5-1	.542	L.W. Whitford
1943	No Baseball		
1944	No Baseball		
1945	No Baseball		
1946	6-6	.500	L.W. Whitford
1947	10-3	.769	L.W. Whitford
1948	12-4	.750	L.W. Whitford
1949	9-5	.643	L.W. Whitford
1950	9-4	.692	L.W. Whitford
1951	5-8	.385	L.W. Whitford
1952	8-6	.571	L.W. Whitford
1953	8-8	.500	L.W. Whitford
1954	6-6	.500	L.W. Whitford
1955	12-5	.706	L.W. Whitford
1956	9-7	.563	L.W. Whitford
1957	3-10	.231	L.W. Whitford
1958	12-8	.600	L.W. Whitford

Year	Record	Pct.	Coach
1959	11-3	.786	L.W. Whitford
1960	9-8	.529	L.W. Whitford
1961	11-4	.733	L.W. Whitford
1962	12-5	.706	L.W. Whitford
1963	14-4	.778	L.W. Whitford
1964	11-10	.524	L.W. Whitford
1965	10-4	.714	L.W. Whitford
1966	13-9	.591	J.D. Anderson
1967	7-16	.304	J.D. Anderson
1968	17-5	.773	J.D. Anderson
1969	15-6	.714	J.D. Anderson
1970	16-10	.615	J.D. Anderson
1971	15-10	.600	J.D. Anderson
1972	16-7	.696	J.D. Anderson
1973	17-16	.515	J.D. Anderson
1974	18-14	.563	J.D. Anderson
1975	12-16	.429	J.D. Anderson
1976	12-18	.400	J.D. Anderson
1977	15-18	.455	J.D. Anderson
1978	18-17	.514	J.D. Anderson
1979	11-17	.393	J.D. Anderson
1980	12-16	.429	J.D. Anderson
1981	26-10	.722	J.D. Anderson
1982	11-16	.407	J.D. Anderson
1983	7-15	.318	J.D. Anderson
1984	12-18	.400	J.D. Anderson
1985	15-32	.319	Gary Swanson
1986	25-18	.581	Gary Swanson
1987	26-21	.553	Gary Swanson
1988	11-43	.204	Gene Baker
1989	13-37	.260	Gene Baker
1990	20-39	.339	Gene Baker
1991	12-44	.214	Dave Schrage

92 Seasons 785-787-5 .499

## COACHES RECORDS

Coach	Years	Record	Pct.
Capt. Avery	1893-1894	(2) 2-3	.400
J.E. Vance	1895-1897	(3) 5-4	.556
Throthe	1898	(1) 2-1	.667
Sutherland	1899-1901	(3) 9-6	.600
Capt. Cotten	1902	(1) 2-7	.222
R.B. Leland	1905	(1) 2-1	.667
Charles Pell	1906	(1) 1-7	.125
John Fitzgerald	1907	(1) 4-2	.600
Roy Seymour	1908, 1911, 1915-1917	(5) 14-21-1	.389
H.F. Pasini	1912-1913	(2) 9-9-1	.500
H.G. Lundeman	1914	(1) 4-4	.500
Van Oot	1918-1919	(2) 8-6	.571
Abram James	1920-1921	(2) 6-6	.500
L.L. Mendenhall	1922-23	(2) 10-6	.625
Osborne Cowles	1924	(1) 6-0	1.000
Roscoe Minton	1925	(1) 7-3	.700
L.W. Whitford	1926-1965	(37) 302-211-4	.602
J.D. Anderson	1966-1984	(19) 270-255	.514
Gary Swanson	1985-87	(3) 66-71-1	.482
Gene Baker	1988-1990	(3) 44-119	.270
Dave Schrage	1991-present	(1) 12-44	.214



# NORTHERN IOWA SERIES RECORDS

Opponent	W-L
Arkansas	0-5
Arkansas State	2-6
Army	1-2
Augsburg	1-0
Augustana (SD)	30-10
Austin Peay	0-2
Bradley	2-1
Briar Cliff	12-6
Carleton	8-1
Central	16-2
Central Arkansas	1-0
Central Methodist	2-0
Central Michigan	0-4
Central Missouri State	1-5
Creighton	2-11
Coe	23-18
Cornell	3-6
Delaware Valley	0-1
Drake	35-13
Drew	1-0
Dubuque	15-10
Eastern Illinois	5-23
East Tennessee State	0-1
Evangel	2-1
Evansville	1-0
Florida State	0-3
Ft. Hays State	1-0
Goshen	3-0
Grand View	7-16
Grinnell	0-2
Gustavus Adolphus	1-0
Highland Park	2-4
Illinois at Chicago	2-2
Illinois College	3-2
Illinois State	6-5
Indiana State	0-2
Iowa	9-40
Iowa State	33-77

Opponent	W-L
Iowa Wesleyan	3-1
Kansas	2-8
Kansas State	0-4
Kent State	1-0
Knox	1-0
Kutztown State	1-0
Lake Forest	2-0
Lincoln	7-0
Loras	15-5
Luther	30-30
Mankato State	9-10
Memphis State	0-4
Miami (FL)	0-2
Miami (OH)	0-4
Michigan	0-2
Michigan State	4-2
Middle Tennessee State	0-1
Millersville	0-1
Milligan	0-1
Minnesota	4-32
Missouri	2-11
Missouri Southern	0-1
Monmouth	2-0
Morningside	35-23
Mt. Marty	2-0
Mt. Mercy	17-5
Nebraska	1-14
Nebraska-Omaha	6-5
North Central	0-1
North Dakota	21-6
North Dakota State	20-10
Northeast Missouri State	3-1
Northwest Missouri State	3-3
Northwestern	0-5
Northern Illinois	8-13
Notre Dame	0-1
Oklahoma	0-3
Oklahoma State	1-9

Opponent	W-L
Oral Roberts	0-1
Pan American	0-13
Plymouth	1-0
Quincy	2-0
St. Ambrose	10-2
St. Joseph	3-2
St. Lawrence	0-1
St. Louis	2-1
St. Olaf	1-2
St. Xavier	2-3
Sam Houston State	1-6
School of the Ozarks	1-0
Simpson	15-4
South Alabama	0-3
South Dakota	33-2
South Dakota State	25-17
Southern Colorado	0-1
Southwest Baptist	1-0
Southwest Missouri State	1-28
Texas Wesleyan	0-1
Toledo	0-1
Upper Iowa	27-23
Wartburg	74-37
Washington (MO)	2-1
Wayne State (NE)	1-0
Western Illinois	23-40
Western Kentucky	1-1
Western Michigan	1-6
Westmar	2-0
Wichita State	0-1
William Penn	5-0
Winona State	4-8
Wisconsin-LaCrosse	12-7
Wisconsin-Milwaukee	3-1
Wisconsin-Oshkosh	2-3
Wisconsin-Platteville	6-3
Wisconsin-River Falls	2-1

## PANTHERS IN THE PROS

Providing tangible evidence of the dramatic strides made by the Northern Iowa baseball program in recent years, 1990 saw the first two Panthers selected in the major league amateur draft.

Junior pitcher Steve Dreyer became the first UNI player ever selected when he was taken in the

eighth round by the Texas Rangers. Dreyer was the top hurler for Gastonia of the South Atlantic League last season and drew a starting assignment in the league's all-star game, where he was the winning pitcher.

Outfielder Mark Chambers became the second Panther taken when the Atlanta Braves drafted him in the 62nd round of the 1990 draft. He completed his second season in the minor leagues last year with the Braves' Class A team at Pulaski of the Appalachian League. He and Dreyer were back in school in the fall semester to continue work on



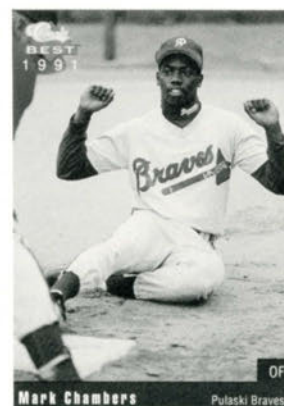
Duane Josephson



Eddie Watt



Steve Dreyer



Mark Chambers

their degrees and reported to spring training in early March.

Other Northern Iowa alums who played in the major leagues include former White Sox and Red Sox All-Star catcher Duane Josephson and former Orioles reliever Eddie Watt.



# NORTHERN IOWA RECORD BOOK

## TEAM BATTING

Most At-Bats.....Season: 1758 (1990)  
 Most Runs Scored.....Season: 366 (1986)  
     Game: 27, Western Illinois; Monmouth (1928)  
     Inning: 15, Lincoln (1989)  
 Most Runs Scored/Two Teams.....Game: 44,  
     Mt. Mercy (1985)  
 Most Runs Scored/Two Teams in a  
 Doubleheader .....Game: 67, Mt. Mercy (1985)  
 Most Hits.....Season: 484 (1990)  
 Most Runs Batted In.....Season: 323 (1986)  
 Most Doubles.....Season: 82 (1990)  
 Most Triples.....Season: 17 (1990)  
 Most Home Runs.....Season: 68 (1986)  
 Most Total Bases.....Season: 713 (1986)  
 Highest Slugging Pct.....Season: .625 (1986)  
 Highest Batting Avg.....Season: .363 (1986)  
 Most Strikeouts.....Season: 356 (1988)  
 Most Walks.....Season: 228 (1990)  
 Most Stolen Bases.....Season: 151 (1987)

## INDIVIDUAL BATTING

Most Games Played.....Season: 58,  
     Tom Bach (1990)  
     Career: 165, Mike Morony (1988-91)  
 Most At-Bats.....Season: 213, John Pratt (1990)  
     Career: 477, Mark Lumpa (1988-90)  
     Game: 9, Krumm (1949)  
 Most Hits.....Season: 80, John Pratt (1990)  
     Career: 156, Todd Barkalow (1983-86)  
     Game: 6, Duane Josephson (1964)  
 Most Runs Scored.....Season: 49,  
     Eric Snider (1986)  
     Career: 108, Todd Barkalow (1983-86)  
     Game: 6, Ron Foell (1968)  
 Most Runs Batted In.....Season: 63,  
     Todd Barkalow (1986)  
     Career: 153, Todd Barkalow (1983-86)  
     Game: 8, Mark Lumpa (1990)  
     Rick Kriz (1969)  
     Jerry Holbrook (1962)  
 Most Total Bases.....Season: 133,  
     John Pratt (1990)  
     Career: 315, Todd Barkalow (1983-86)  
     Game: 14, Ron Foell (1968)  
 Highest Batting Avg.....Season: .525,  
     Dick Nottger (1941)  
     Career (Min. 300 AB): .410,  
     Eric Snider (1986-87)  
 Highest Slugging Pct.....Season: .984,  
     Todd Barkalow (1986)  
     Career: .745, Todd Barkalow (1983-86)  
 Most Doubles.....Season: 16, John Pratt (1990)  
     Career: 29, Mark Lumpa (1988-90)  
     Shawn Andrews (1984-88)  
     Game: 3, Many players

Most Triples.....Season: 6,  
     Jerry Holbrook (1962)  
     Career: 10, Tim Hackenmiller (1970-73)  
     Game: 2, Duane Josephson (1963)  
     Bruce Lein (1962)  
 Most Home Runs.....Season: 16,  
     Todd Barkalow (1986)  
     Career: 42, Todd Barkalow (1983-86)  
     Game: 3, Tim Hackenmiller (1970)  
 Most Extra Base Hits.....Season: 30,  
     John Pratt (1990)  
     Career: 69, Todd Barkalow (1983-86)  
     Game: 5, Ron Foell (1968)  
 Most Stolen Bases.....Season: 33,  
     Eric Snider (1987)  
     Career: 65, Eric Snider (1986-87)  
     Game: 5, Tom Potts (1985)  
 Most Walks.....Season: 40, Tom Bach (1990)  
     Career: 64, Mike Weber (1974-77)  
     Game: 4, Kim Ruddick (1980)  
 Most Strikeouts.....Season: 55,  
     Mark Lumpa (1988)  
     Career: 132, Mark Lumpa (1988-1990)  
     Game: 4, Mark Lumpa (1988, 1990);  
     Tom Steele (1967)  
 Fewest Strikeouts.....Season (min. 50 AB): 1  
     (72 AB), Duane Josephson (1964)

## TEAM PITCHING

Most Appearances.....Season: 136 (1988)  
 Most Complete Games.....Season: 24 (1990)  
 Most Shutouts.....Season: 5 (1964, 1970)  
 Most Saves.....Season: 6 (1981, 1987, 1988)  
 Lowest ERA.....Season: 1.87 (1965)  
 Highest ERA.....Season: 10.96 (1988)  
 Most Innings Pitched.....Season: 424 1/3 (1990)  
 Most Hits Allowed.....Season: 605 (1988)  
 Most Runs Allowed.....Season: 601 (1988)  
     Game: 33, Oklahoma (1989)  
     Inning: 20, Eastern Illinois (1988)  
 Most Earned Runs.....Season: 444 (1988)  
 Most Walks.....Season: 355 (1988)  
 Most Strikeouts.....Season: 250 (1987)  
 Most Hit Batsmen.....Season: 37 (1988)

## INDIVIDUAL PITCHING

Most Appearances.....Season: 18,  
     Tom Jansen (1973)  
     Career: 48, Rod Hulme (1986-89)  
 Most Victories.....Season: 8,  
     Doug Darnell (1968)  
     Career: 19, Doug Darnell (1967-69)  
 Most Losses.....Season: 9, John Thomas (1991)

Most Complete Games.....Season: 9,  
     Darrell Bunge (1962)  
     Career: 15, Tom Simpson (1963-65)  
 Most Innings.....Season: 79,  
     Darrell Bunge (1962)  
     Career: 187, Scott Palmer (1979-82)  
 Lowest ERA.....Season: 0.38,  
     Tom Simpson (1962)  
     Career: 1.28, Tom Simpson (1962-65)  
 Most Saves.....Season: 5, Mike Berlach (1987)  
     Career: 5, Mike Berlach (1987)  
 Most Strikeouts.....Season: 90,  
     Darrell Bunge (1962)  
     Career: 193, Doug Darnell (1967-69)  
     Game: 21, Kent Folsom (1958)  
 Most Hits.....Season: 105, Scott Kaul (1990)  
 Most Runs.....Season: 81, Jim Sorge (1986)  
 Most Earned Runs.....Season: 65,  
     Jim Sorge (1986)  
 Fewest Runs.....Season: 3, Huston (1965)  
 Fewest Earned Runs.....Season: 2,  
     Tom Simpson (1963)  
 Most Walks.....Season: 55,  
     Mike Brandmeyer (1991)  
 Most Home Runs.....Season: 15,  
     Scott Kaul (1990)  
 Most Pickoffs.....Season: 14, Paul Boffeli (1987)  
     Career: 23, Paul Boffeli (1986-87)

Most Starts.....Season: 12, Paul Boffeli (1987)  
 Most Consecutive Scoreless  
     Innings: 40 1/3, Tom Simpson (1963)

## TEAM FIELDING

Most Putouts.....Season: 1273 (1990)  
 Most Assists.....Season: 565 (1991)  
 Most Errors.....Season: 131 (1988)  
 Highest Fielding Pct.....Season: .964 (1968)  
 Lowest Fielding Pct.....Season: .922 (1988)  
 Most Double Plays.....Season: 50 (1991)  
 Most Triple Plays.....Season: 1 (1988)

## INDIVIDUAL FIELDING

Most Putouts.....Season: 364,  
     Steve Schmelzer (1989)  
 Most Assists.....Season: 131,  
     Mike Morony (1990)  
     Career: 336, Mike Morony (1988-91)  
 Most Total Chances.....Season:  
     389, Mike Himmelsbach (1991);  
     Steve Schmelzer (1989)  
 Most Double Plays.....Season: 30,  
     Shawn Andrews (1988)



# NORTHERN IOWA RECORD BOOK

## MISCELLANEOUS TEAM RECORDS

Games Played .....	Season: 59 (1990)
Wins .....	Season: 26 (1981, 1987)
Losses .....	Season: 44 (1991)
Winning Streak .....	13 (1947-48)
Losing Streak .....	13 (1983, 1988)
Margin of Victory .....	28, Monmouth (1928)
Margin of Defeat .....	31, Oklahoma (1989)
Highest Winning Pct .....	(11-1) .917 (1928)
Lowest Winning Pct .....	(1-13) .071 (1931)
Longest Game ....	19 innings, Minnesota (1949)

## SINGLE SEASON LEADERS

### BATTING

#### AVERAGE

(min. 2.5 AB/game and 75% of games)

.525 Dick Nottger	1941
.510 Gordon Blanchard	1937
.500 Todd Barkalow	1986
.458 Jim Blythe	1977
.444 Terry Notton	1979
.429 Rick Kriz	1968
.427 Kevin Seichter	1981
.426 Dick Nottger	1942
.423 Don Dahlke	1950
.421 Eric Snider	1987
.421 Lyle Thomson	1961

#### HITS

80 John Pratt	1990
61 P.J. Conlon	1991
Eric Snider	1987
Todd Barkalow	1986
58 Mike Morony	1991
Eric Snider	1986
56 Tom Bach	1990
53 Dave Smith	1987
52 Mike Morony	1990
51 Mark Lumpa	1989
Brian Scheidegger	1989

#### RUNS

49 Eric Snider	1986
46 Todd Barkalow	1986
45 Dave Smith	1986
Scott Schmelzer	1986
44 John Pratt	1990
43 Eric Snider	1987
42 Scott Schmelzer	1985
37 Randy Walter	1986
36 Jim Blythe	1977
35 Terry Bahlmann	1981

## DOUBLES

16 John Pratt	1990
14 Eric Snider	1987
13 Mark Lumpa	1988
Scott Schmelzer	1985
Jim Blythe	1977
11 Tom Bach	1990
Jeff Frese	1987

## TRIPLES

6 Jerry Holbrook	1962
5 John Pratt	1990
Rick Kriz	1968
4 Eric Snider	1987
Tom Potts	1985

## HOME RUNS

16 Todd Barkalow	1986
15 Todd Barkalow	1985
11 Scott Schmelzer	1986
Scott Schmelzer	1985
10 Duane Josephson	1964
9 John Pratt	1990
Ron Foell	1968
8 Mark Lumpa	1990
Shawn Andrews	1988
Randy Walter	1986

## RUNS BATTED IN

63 Todd Barkalow	1986
47 Scott Schmelzer	1986
43 John Pratt	1990
Eric Snider	1987
42 Todd Barkalow	1985
37 Randy Walter	1986
36 Mike Morony	1990
35 Mark Lumpa	1988
Eric Snider	1986
34 Dave Smith	1986

## STOLEN BASES

33 Eric Snider	1987
32 Eric Snider	1986
27 Tovey Goynes	1987
21 Scott Schmelzer	1985
19 Tovey Goynes	1988
Dave Smith	1987
Scott Schmelzer	1986
18 Dave Smith	1986
Randy Walter	1986
16 John Pratt	1989
Mike Hodge	1986

## PITCHING

### EARNED RUN AVERAGE

(min. 1 IP/team game)

0.38 Tom Simpson	1964
0.62 Chuck Burns	1970
0.96 Frank Huston	1965
1.25 Darrell Bunge	1962
1.29 John Zahn	1959
1.34 Tom Simpson	1964
1.44 Tom Jansen	1972
1.50 Dave Ray	1959
1.76 Duane Usher	1971
1.80 Joe Przychodzin	1976

### VICTORIES

8 Darrell Bunge	1968
7 Scott Palmer	1981
Chuck Burns	1970
Doug Darnell	1969
Darrell Bunge	1962
6 Jim Kriener	1981
Thor Rastetter	1974

### INNINGS PITCHED

79 Darrell Bunge	1962
78 2/3 Steve Dreyer	1990
78 1/3 Scott Kaul	1990
71 2/3 Doug Darnell	1968
69 2/3 Thor Rastetter	1974
69 John Thomas	1991
68 1/3 Mike Brandmeyer	1991
Paul Boffeli	1987
62 2/3 Kent Folsom	1958
62 Steve Hoffmann	1990

### STRIKEOUTS

90 Darrell Bunge	1962
86 Doug Darnell	1968
72 Mike Brandmeyer	1991
Phil Johnson	1966
68 Kent Folsom	1958
67 Steve Dreyer	1990
66 Tom Simpson	1964
Tom Simpson	1963
64 Tom Simpson	1965
63 Duane Usher	1971



# 1992 MISSOURI VALLEY OPPONENTS

## WICHITA STATE

Location: Wichita, Kansas 67208  
 Enrollment: 15,800  
 Nickname: Shockers  
 Colors: Yellow and Black  
 Conference: Missouri Valley  
 President: Dr. Warren B. Armstrong  
 Athletic Director: Tom Shupe  
 Phone: (316) 689-3250  
 Head Coach: Gene Stephenson (Missouri '75)  
 WSU & Career Record: 792-248-3 (14 years)  
 Assistant Coaches: Brent Kemnitz, Loren Hibbs, Jim Nietopski  
 Baseball Phone: (316) 689-8142  
 Sports Information Director: Scott Schumacher  
 Work Phone: (316) 689-3265  
 Home Phone: (316) 721-6015  
 FAX Phone: (316) 689-3336  
 Home Facility (Capacity): Eck Stadium-Tyler Field (3,700)  
 Press Box Phone: (316) 689-3423  
 Starting Players/Pitchers  
 Returning: 7/2  
 Lettermen Returning: 18/8  
 Last Year's Record: 66-13  
 Conference (Finish): 21-3 (First)  
 1991 Postseason Record: NCAA runner-up



Top Returnees: Kennie Steenstra, Jr., P, 6-5, 220, 17-0, 2.17 ERA  
 Darren Dreifort, So., P, 6-2, 200, 9-2, 2.41 ERA  
 Chris Wimmer, Jr., SS, 5-11, 170, .401, 4 HR, 68 RBI, 54 SB  
 Doug Mirabelli, Jr., C, 6-0, 200, .351, 13 HR, 85 RBI

Top Newcomers: Richie Taylor, Fr., OF, 5-10, 160, Haysville, KS (Campus HS)  
 Travis Huenfeld, Fr., OF, 5-10, 185, Kansas City, MO (Rockhurst HS)  
 Mike Brandley, Fr., P, 6-0, 190, Moore, OK (Moore HS)  
 Joel Bradberry, Fr., P, 6-1, 190, Talihina, OK (Talihina HS)

## INDIANA STATE

Location: Terre Haute, Indiana 47809  
 Enrollment: 11,783  
 Nickname: Sycamores  
 Colors: Royal Blue and White  
 Conference: Missouri Valley  
 President: Dr. Richard Landini  
 Athletic Director: Brian Faison  
 Phone Number: (812) 237-4040  
 Head Coach: Bob Warn (Southern Illinois '68)  
 ISU & Career Record: 625-335-7 (16 years)  
 Assistant Coaches: Larry Nowlin, Ed Cook  
 Baseball Phone: (812) 237-4051  
 Sports Information Director: Eric Ruden  
 Work Phone: (812) 237-4160  
 Home Phone: (812) 877-3540  
 FAX Phone: (812) 237-4157  
 Baseball SID: Tom James  
 Home Phone: (812) 466-6619  
 Home Facility (Capacity): Sycamore Field (2,500)  
 Press Box Phone: (812) 237-4187  
 Starting Players/Pitchers  
 Returning: 6/4  
 Lettermen Returning/Lost: 17/7  
 Last Year's Record: 42-23



Conference Record (Finish): 15-9 (Third)  
 1991 Postseason Record: 3-2, Third in MVC Tourney

Top Returnees: Casey Whitten, So., LHP, 6-1, 180, 8-2, 4.01 ERA  
 Stoney Burke, Jr., C, 6-1, 200, .294, 1 HR, 23 RBI  
 Johnny LaMar, Sr., OF, 6-3, 190, .321, 9 HR, 49 RBI  
 Dave Doster, Jr., 2B, 5-10, 165, .326, 5 HR, 44 RBI

Top Newcomers: Mat Reese, Jr., OF, 6-3, 190, Maricopa, AZ (Central Arizona CC)  
 Jason Grabosch, Jr., 1B, 6-3, 210, Tucson, AZ (Central Arizona CC)  
 Steve Carpenter, Jr., RHP, 6-4, 220, Linton, IN (Wabash Valley JC)  
 Jimmy Hill, Fr., 2B, 5-10, 170, Terre Haute, IN (West Vigo HS)

## BRADLEY

Location: Peoria, Illinois 61625  
 Enrollment: 6,000  
 Nickname: Braves  
 Colors: Red and White  
 Conference: Missouri Valley  
 President: Dr. John Brazil  
 Athletic Director: Ron Ferguson  
 Phone Number: (309) 677-2680  
 Head Coach: Dewey Kalmer (Quincy '66)  
 BU Record: 362-306 (12 years)  
 Career Record: 552-448-3 (23 years)  
 Assistant Coaches: John Young, John Dyke  
 Baseball Phone: (309) 677-2684  
 Sports Information Director: Joe Dalfonso  
 Work Phone: (309) 677-2624  
 Home Phone: (309) 673-5248  
 FAX Phone: (309) 677-2626  
 Home Facility: Vonachen Stadium at Meinen Field  
 Starting Players/Pitchers  
 Returning: 7/9  
 Lettermen Returning/Lost: 21/6  
 Last Year's Record: 26-36  
 Conference Record (Finish): 7-17 (Fifth)



Top Returnees: Doug Sholtis, Jr., 1B-P, 6-5, 220, .336, 7 HR, 18 RBI  
 Pat Graham, Jr., OF, 5-11, 185, .250, 3 HR, 31 RBI  
 Joe Petcka, Jr., RHP, 6-3, 192, 5-4, 4.38 ERA

Top Newcomers: Josh Markert, Fr., C, 5-10, 175, Dupu, IL  
 Anthony Mannino, Fr., INF, 5-10, 185, Morton IL

## ILLINOIS STATE

Location: Normal, Illinois 61761  
 Enrollment: 21,000  
 Nickname: Redbirds  
 Colors: Red and White  
 Conference: Missouri Valley  
 President: Dr. Thomas Wallace  
 Athletic Director: Ron Wellman  
 Phone Number: (309) 438-3636  
 Head Coach: Jeff Stewart (Northern Illinois '79)  
 ISU & Career Record: 79-98 (4 years)  
 Assistant Coach: Tim Johnson  
 Baseball Phone: (309) 438-5151  
 Sports Information Director: Kenny Mossman  
 Work Phone: (309) 438-3805  
 Home Phone: (309) 663-7688  
 FAX Phone: (309) 438-5634  
 Baseball SID: Chris Padgett  
 Home Phone: (309) 452-5908  
 Home Facility (Capacity): Redbird Field (1,000)  
 Press Box Phone: (309) 438-7961  
 Starting Players/Pitchers  
 Returning: 2/7  
 Lettermen Returning/Lost: 12/12  
 Last Year's Record: 27-33  
 Conference Record (Finish): 5-19 (Seventh)



1991 Postseason Record: 0-2 in MVC Tourney

Top Returnees: Matt Herges, Jr., RHP, 6-0, 200, 8-6, 4.93 ERA  
 Mark Dorencz, Jr., SS, 5-11, 170, .295, 3 HR, 24 RBI  
 Nick Boratto, Sr., RHP, 6-3, 195, 1-4, 3.78 ERA  
 Andy Schuster, Sr., C, 6-0, 195, .220, 1 HR, 14 RBI

Top Newcomers: Mark Aguilar, Fr., IF/OF, 5-11, 155, Mattoon, IL (Mattoon)  
 Matt Gainer, Fr., 1B/OF, 6-0, 177, Chicago, IL (Marist)  
 Paul O'Malley, Fr., RHP, 6-1, 163, Skokie, IL (Niles North)  
 Don Spaniak, Fr., IF, 6-1, 190, Arlington Heights, IL (Rolling Meadows)



# 1992 MISSOURI VALLEY OPPONENTS

## SOUTHERN ILLINOIS

Location: Carbondale, Illinois  
62901  
Enrollment: 24,000  
Nickname: Salukis  
Colors: Maroon and White  
Conference: Missouri Valley  
President: John Guyon  
Phone Number: (618) 453-7250  
Head Coach: Sam Rigglesman  
(Spring Arbor '73)  
SIU Record: 27-36-1 (1 year)  
Career Record: 292-234-1 (14 years)  
Assistant Coaches: Ken Henderson, Jeff Kuder, Frank Hunsaker  
Sports Information Director: Fred Huff  
Work Phone: (618) 453-7235  
Home Phone: (618) 542-2780  
FAX Phone: (618) 453-2648  
Baseball SID: Gene Green  
Home Phone: (618) 684-2371  
Home Facility (Capacity): Abe Martin Field (1,800)  
Press Box Phone: (618) 453-3794  
Starting Players/Pitchers  
Returning: 5/5  
Lettermen Returning/Lost: 12/14  
Last Year's Record: 27-36-1



Conference Record (Finish): 6-18  
(Tie for Fifth)  
1991 Postseason Record: 2-2 in MVC Tourney  
Series Record vs. UNI: First meeting

Top Returnees: Jeff Cwynaa, So., 2B, 5-11, 175, .331, 17 RBI  
Darrin Barton, Sr., 1B, 6-2, 200, .301, 10 RBI  
Dan Esplin, So., LF, 5-11, 175, .292, 3 HR, 34 RBI  
Derek Shelton, Sr., C, 5-11, 195, .253, 2 HR, 29 RBI  
Mike Van Gilder, Jr., RHP, 6-4, 215, 5-2, 4.54 ERA, 1 SAVE

Top Newcomers: Michael Blang, Fr., RHP, 6-4, 205, Minona, WI (Grove)  
Leland Macon, Fr., OF 6-3, 215, St. Louis, MO (Kirkwood)  
Mike Msardle, Fr., RHP, 6-3, 210, LaCrosse, WI  
Chris Bittick, Jr., 3B, 6-1, 205, Tulsa, OK (Seminole)

## CREIGHTON



Location: Omaha, Nebraska  
68178  
Enrollment: 6,140  
Nickname: Bluejays  
Colors: Blue and White  
Conference: Missouri Valley  
President: Rev. Michael G. Morrison, S.J.  
Athletic Director: Tom Moore  
Phone Number: (402) 280-2720  
Head Coach: Todd Wenberg (Creighton '81)  
Coaching Record: First year  
Assistant Coaches: Jack Dahm, Mike McCafferty  
Baseball Phone: (402) 280-2720  
Sports Information Director: Kevin Sarver  
Work Phone: (402) 280-2488  
Home Phone: (402) 393-5197  
FAX Phone: (402) 280-2496  
Home Facility (Capacity): Creighton Sports Complex (2,000)  
Starting Players/Pitchers  
Returning: 4/5  
Lettermen Returning/Lost: 14/12  
Last Year's Record: 51-22  
Conference Record (Finish): 16-8 (Second)  
1991 Postseason Record: Tied for

Third in College World Series  
Series Record vs. UNI: 11-2

Top Returnees: Rick Freehling, Sr., OF, 5-10, 165, .337, 53 RBI, 15 2B, 9 3B, 9 HR  
Bobby Langer, Sr., IF, 5-11, 180, .338, 6 HR, 23 2B  
Chad McConnell, Jr., IF-OF, 6-1, 180, .344, 11 HR, 10 2B  
Alan Benes, So., RHP, 6-4, 200, 11-3, 2.98 ERA  
Brian O'Connor, So., RHP, 6-2, 185, 6-3, 3.82 ERA, 6 saves

Top Newcomers: Jeff Grosenbach, Jr., IF, 6-4, 215, Pensacola, FL (L.B. Wallace JC)  
Bill Hahn, Jr., IF, 6-0, 175, Omaha, NE (Transfer from Iowa State)  
Chad Huebner, P-OF, So., 6-0, 165, Omaha, NE (Transfer from Hutchinson, KS CC)  
Tyson Kimm, Fr., IF, 6-0, 150, Amana, Iowa (Norway HS)

## SOUTHWEST MISSOURI STATE

Location: Springfield, Missouri  
65804  
Enrollment: 20,672  
Nickname: Bears  
Colors: Maroon and White  
Conference: Missouri Valley  
President: Dr. Marshall Gordon  
Athletic Director: Bill Rowe  
Phone Number: (417) 836-5244  
Head Coach: Keith Guttin (Missouri-St. Louis '78)  
SMSU & Career Record: 340-141 (9 years)  
Assistant Coaches: Brent Thomas, Paul Evans  
Baseball Phone: (417) 836-5244  
Sports Information Director: Mark Stillwell  
Work Phone: (417) 836-5402  
Home Phone: (417) 883-5452  
FAX Phone: (417) 836-4868  
Home Facility (Capacity): Meador Park (1,500)  
Press Box Phone: (417) 882-4005  
Starting Players/Pitchers  
Returning: 4/0  
Lettermen Returning/Lost: 9/17  
Last Year's Record: 40-22



Conference Record (Finish): 14-10 (Fourth)  
Series Record vs. UNI: 28-1

Top Returnees: Steve Aldridge, 2B, 6-2, 175, .324, 4 HR, 37 RBI  
Bill Mueller, 3B, 5-10, 170, .413, 0 HR, 2 RBI  
Chad Lakin, OF, 5-11, 195, .327, 4 HR, 32 RBI  
Cory Krueger, OF, 5-11, 170, .314, 6 HR, 36 RBI  
Greg Resz, DH-P, 6-5, 205, .347, 4-3, 3.71 ERA

Top Newcomers: Bart Evans, Jr., P, 6-2, 195, Poplar Bluff, MO (Three Rivers CC)  
Andy Finley, Sr., P, 5-9, 165, Uniontown, OH (Univ. of Akron)  
John Knott, Sr., 3B, 5-11, 175, St. Louis, MO (Nicholls State)  
Kevin Taylor, Jr., OF-P, 5-11, 180, Waukegan, IL (Triton JC)



**Missouri Valley**  
Conference



# 1992 NON-CONFERENCE OPPONENTS

## DUBUQUE

Location: Dubuque,  
Iowa 52001  
Enrollment: 1,100  
Nickname: Spartans  
Colors: Royal Blue and  
White  
Conference: Iowa  
Athletic Director: Jon Davison  
Head Coach: Dennis Rima  
UD & Career Record: 19-45 (2 years)  
Baseball SID: Jay Schiesl  
Work Phone: (319) 589-3230  
FAX Phone: (319) 556-8633  
Home Facility: UD Field (500)  
Last Year's Record: 15-16  
Conference Record: 5-9

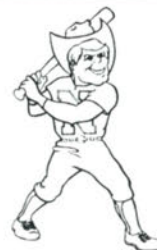
## AIR FORCE

Location: Colorado  
Springs, Colorado  
80840  
Enrollment: 4,400  
Nickname: Falcons  
Colors: Blue and Silver  
Conference: Western Athletic  
Athletic Director: Col. Kenneth Schweitzer  
Head Coach: Paul Mainieri (New Orleans '79)  
USAF Record: 75-88 (3 years)  
Career Record: 255-209 (9 years)  
Baseball SID: Dave Kellogg  
Work Phone: (719) 472-2313  
Home Phone: (719) 528-5390  
FAX Phone: (719) 472-3798  
Home Facility: Falcon Field  
Press Box Phone: (719) 472-3472  
Last Year's Record: 22-27  
Conference Record (Finish): 1-20 (Eighth)



## NEBRASKA

Location: Lincoln, Nebraska  
68588  
Enrollment: 25,000  
Nickname: Cornhuskers  
Colors: Scarlet and Cream  
Conference: Big Eight  
Athletic Director: Bob Devaney  
Head Coach: John Sanders (Northern Colorado '69)  
UN Record: 580-292 (14 years)  
Career Record: 627-322 (17 years)  
Baseball SID: Chris Anderson  
Work Phone: (402) 472-2263  
Home Phone: (402) 467-4678  
FAX Phone: (402) 472-2005  
Home Facility (Capacity): Buck Beltzer Field  
(1,500)  
Press Box Phone: (402) 472-2279  
Last Year's Record: 37-22  
Conference Record (Finish): 10-14 (Sixth)



## OHIO STATE

Location: Columbus, Ohio  
43210  
Enrollment: 54,000  
Nickname: Buckeyes  
Colors: Scarlet and Gray  
Conference: Big Ten  
Athletic Director: James Jones  
Head Coach: Bob Todd (Missouri '71)  
OSU Record: 151-97-1 (4 years)  
Career Record: 275-179-1 (8 years)  
Baseball SID: Bob Goldring  
Work Phone: (614) 292-6861  
Home Phone: (614) 459-7823  
FAX Phone: (614) 292-8547  
Home Facility (Capacity): Trautman Field  
(2,500)  
Press Box Phone: (614) 292-0623  
Last Year's Record: 53-13  
Conference Record (Finish): 20-8 (First)



## LOUISVILLE

Location: Louisville,  
Kentucky 40292  
Enrollment: 22,000  
Nickname: Cardinals  
Colors: Red and Black  
Conference: Metro  
Athletic Director: Bill Olsen  
Head Coach: Gene Baker (Austin Peay '81)  
UL Record: 32-30 (1 year)  
Career Record: 111-207 (7 years)  
Baseball SID: Nancy Smith  
Work Phone: (502) 588-6581  
Home Phone: (502) 636-3555  
FAX Phone: (502) 588-7401  
Home Facility (Capacity): Parkway Field (500)  
Press Box Phone: (502) 553-1628  
Last Year's Record: 32-30  
Conference Record (Finish): 8-12 (Fifth)



## WESTERN ILLINOIS

Location: Macomb, Illinois  
61455  
Enrollment: 13,800  
Nickname: Leathemecks  
Colors: Purple and Old Gold  
Conference: Mid-Continent  
Athletic Director: Dr. Helen  
Smiley  
Head Coach: Dick Pawlow (Illinois '63)  
WIU Record: 435-380 (22 years)  
Career Record: 496-421 (26 years)  
Baseball SID: Michael Stephens  
Work Phone: (309) 298-1133  
Home Phone: (309) 837-9134  
FAX Phone: (309) 298-3366  
Home Facility (Capacity): Vince Grady Field  
(1,200)  
Last Year's Record: 21-23  
Conference Record (Finish): 5-6 (Third)



## CENTRAL MISSOURI STATE

Location: Warrensburg,  
Missouri 64093  
Enrollment: 12,000  
Nickname: Mules  
Colors: Cardinal and Black  
Conference: Missouri  
Athletic Director: Jerry  
Hughes  
Head Coach: Dennis Woody (Central Missouri  
St. '86)  
CMSU & Career Record: 33-17 (1 year)  
Baseball SID: Bill Turnage  
Work Phone: (816) 543-4312  
Home Phone: (816) 747-5031  
FAX Phone: (816) 543-8034  
Home Facility (Capacity): Mules Field (800)  
Last Year's Record: 33-17  
Conference Record: 8-3



## ST. LOUIS

Location: St. Louis,  
Missouri 63108  
Enrollment: 11,800  
Nickname: Billikens  
Colors: Blue and  
White  
Conference: Great Midwest  
Athletic Director: Debbie Yow  
Head Coach: Bob Hughes (SIU-Edwardsville '75)  
SLU & Career Record: 43-115-1 (3 years)  
Baseball SID: Russ Brightman  
Work Phone: (314) 658-2524  
Home Phone: (314) 947-0749  
FAX Phone: (314) 658-2249  
Home Facility: Billiken Sports Center  
Last Year's Record: 21-40  
Conference Record (Finish): 6-14 (Fourth)



SAINT LOUIS  
UNIVERSITY

## MEMPHIS STATE

Location: Memphis,  
Tennessee 38152  
Enrollment: 22,500  
Nickname: Tigers  
Colors: Blue and Gray  
Conference: Great  
Midwest  
Athletic Director: Charles Cavagnaro  
Head Coach: Bobby Kilpatrick (MSU & Career Record: 628-315-2 (20 years)  
Baseball SID: Rob Stallins  
Work Phone: (901) 678-2337  
Home Phone: (901) 323-0990  
FAX Phone: (901) 678-4134  
Home Facility: Nat Buring Field (2,000)  
Press Box Phone: (901) 678-2862  
Last Year's Record: 30-24  
Conference Record (Finish): 8-10 (Fourth)





# 1992 NON-CONFERENCE OPPONENTS

## DUBUQUE

Location: Dubuque,  
Iowa 52001  
Enrollment: 1,100  
Nickname: Spartans  
Colors: Royal Blue and  
White  
Conference: Iowa  
Athletic Director: Jon Davison  
Head Coach: Dennis Rima  
UD & Career Record: 19-45 (2 years)  
Baseball SID: Jay Schiesl  
Work Phone: (319) 589-3230  
FAX Phone: (319) 556-8633  
Home Facility: UD Field (500)  
Last Year's Record: 15-16  
Conference Record: 5-9

## AIR FORCE

Location: Colorado  
Springs, Colorado  
80840  
Enrollment: 4,400  
Nickname: Falcons  
Colors: Blue and Silver  
Conference: Western Athletic  
Athletic Director: Col. Kenneth Schweitzer  
Head Coach: Paul Mainieri (New Orleans '79)  
USAF Record: 75-88 (3 years)  
Career Record: 255-209 (9 years)  
Baseball SID: Dave Kellogg  
Work Phone: (719) 472-2313  
Home Phone: (719) 528-5390  
FAX Phone: (719) 472-3798  
Home Facility: Falcon Field  
Press Box Phone: (719) 472-3472  
Last Year's Record: 22-27  
Conference Record (Finish): 1-20 (Eighth)



## NEBRASKA

Location: Lincoln, Nebraska  
68588  
Enrollment: 25,000  
Nickname: Cornhuskers  
Colors: Scarlet and Cream  
Conference: Big Eight  
Athletic Director: Bob Devaney  
Head Coach: John Sanders (Northern Colorado '69)  
UN Record: 580-292 (14 years)  
Career Record: 627-322 (17 years)  
Baseball SID: Chris Anderson  
Work Phone: (402) 472-2263  
Home Phone: (402) 467-4678  
FAX Phone: (402) 472-2005  
Home Facility (Capacity): Buck Beltzer Field  
(1,500)  
Press Box Phone: (402) 472-2279  
Last Year's Record: 37-22  
Conference Record (Finish): 10-14 (Sixth)



## OHIO STATE

Location: Columbus, Ohio  
43210  
Enrollment: 54,000  
Nickname: Buckeyes  
Colors: Scarlet and Gray  
Conference: Big Ten  
Athletic Director: James Jones  
Head Coach: Bob Todd (Missouri '71)  
OSU Record: 151-97-1 (4 years)  
Career Record: 275-179-1 (8 years)  
Baseball SID: Bob Goldring  
Work Phone: (614) 292-6861  
Home Phone: (614) 459-7823  
FAX Phone: (614) 292-8547  
Home Facility (Capacity): Trautman Field  
(2,500)  
Press Box Phone: (614) 292-0623  
Last Year's Record: 53-13  
Conference Record (Finish): 20-8 (First)



## LOUISVILLE

Location: Louisville,  
Kentucky 40292  
Enrollment: 22,000  
Nickname: Cardinals  
Colors: Red and Black  
Conference: Metro  
Athletic Director: Bill Olsen  
Head Coach: Gene Baker (Austin Peay '81)  
UL Record: 32-30 (1 year)  
Career Record: 111-207 (7 years)  
Baseball SID: Nancy Smith  
Work Phone: (502) 588-6581  
Home Phone: (502) 636-3555  
FAX Phone: (502) 588-7401  
Home Facility (Capacity): Parkway Field (500)  
Press Box Phone: (502) 553-1628  
Last Year's Record: 32-30  
Conference Record (Finish): 8-12 (Fifth)



## WESTERN ILLINOIS

Location: Macomb, Illinois  
61455  
Enrollment: 13,800  
Nickname: Leathemecks  
Colors: Purple and Old Gold  
Conference: Mid-Continent  
Athletic Director: Dr. Helen  
Smiley  
Head Coach: Dick Pawlow (Illinois '63)  
WIU Record: 435-380 (22 years)  
Career Record: 496-421 (26 years)  
Baseball SID: Michael Stephens  
Work Phone: (309) 298-1133  
Home Phone: (309) 837-9134  
FAX Phone: (309) 298-3366  
Home Facility (Capacity): Vince Grady Field  
(1,200)  
Last Year's Record: 21-23  
Conference Record (Finish): 5-6 (Third)



## CENTRAL MISSOURI STATE

Location: Warrensburg,  
Missouri 64093  
Enrollment: 12,000  
Nickname: Mules  
Colors: Cardinal and Black  
Conference: Missouri  
Athletic Director: Jerry  
Hughes  
Head Coach: Dennis Woody (Central Missouri  
St. '86)  
CMSU & Career Record: 33-17 (1 year)  
Baseball SID: Bill Turnage  
Work Phone: (816) 543-4312  
Home Phone: (816) 747-5031  
FAX Phone: (816) 543-8034  
Home Facility (Capacity): Mules Field (800)  
Last Year's Record: 33-17  
Conference Record: 8-3



## ST. LOUIS

Location: St. Louis,  
Missouri 63108  
Enrollment: 11,800  
Nickname: Billikens  
Colors: Blue and  
White  
Conference: Great Midwest  
Athletic Director: Debbie Yow  
Head Coach: Bob Hughes (SIU-Edwardsville '75)  
SLU & Career Record: 43-115-1 (3 years)  
Baseball SID: Russ Brightman  
Work Phone: (314) 658-2524  
Home Phone: (314) 947-0749  
FAX Phone: (314) 658-2249  
Home Facility: Billiken Sports Center  
Last Year's Record: 21-40  
Conference Record (Finish): 6-14 (Fourth)



SAINT LOUIS  
UNIVERSITY

## MEMPHIS STATE

Location: Memphis,  
Tennessee 38152  
Enrollment: 22,500  
Nickname: Tigers  
Colors: Blue and Gray  
Conference: Great  
Midwest  
Athletic Director: Charles Cavagnaro  
Head Coach: Bobby Kilpatrick (MSU & Career Record: 628-315-2 (20 years))  
Baseball SID: Rob Stallins  
Work Phone: (901) 678-2337  
Home Phone: (901) 323-0990  
FAX Phone: (901) 678-4134  
Home Facility: Nat Buring Field (2,000)  
Press Box Phone: (901) 678-2862  
Last Year's Record: 30-24  
Conference Record (Finish): 8-10 (Fourth)





# 1992 NON-CONFERENCE OPPONENTS

## WISCONSIN-MILWAUKEE

Location: Milwaukee,  
Wisconsin 53201  
Enrollment: 25,000  
Nickname: Panthers  
Colors: Black and Gold  
Conference: Independent



Athletic Director: Bud Haidet  
Head Coach: Scott Kugi  
UWM Record: 9-35 (1 year)  
Career Record: 20-83 (3 years)  
Baseball SID: Paul Helgren  
Work Phone: (414) 229-4593  
FAX Phone: (414) 229-6759  
Home Facility: TBA  
Last Year's Record: 9-35

## ST. AMBROSE

Location: Davenport,  
Iowa 52803  
Enrollment: 2,400  
Nickname: Fighting  
Bees



Colors: Navy and Red  
Conference: Midwest  
Classic  
Athletic Director: Jim Fox  
Head Coach: Todd Becker  
SAU & Career Record: 17-30-1 (1 year)  
Baseball SID: Don White  
Work Phone: (319) 383-8955  
FAX Phone: (319) 383-8791  
Home Facility (Capacity): Assumption Field  
(500)  
Last Year's Record: 17-30-1  
Conference Finish: Fourth

## NORTHERN ILLINOIS

Location: DeKalb, Illinois  
60115  
Enrollment: 24,311  
Nickname: Huskies  
Colors: Cardinal and Black  
Conference: Mid-  
Continent



Athletic Director: Gerald O'Dell  
Head Coach: Joe "Spanky" McFarland (Hillsdale '76)  
NIU & Career Record: 11-25 (1 year)  
Baseball SID: Kari Brackett  
Work Phone: (815) 753-1706  
FAX Phone: (815) 753-9540  
Home Facility: Huskie Field  
Press Box Phone: (815) 753-8097  
Last Year's Record: 11-25

## IOWA

Location: Iowa City, Iowa  
52242

Enrollment: 28,000  
Nickname: Hawkeyes  
Colors: Old Gold and Black  
Conference: Big Ten



Athletic Director: Bob Bowlsby  
Head Coach: Duane Banks (Northern Colorado '65)  
UI Coaching Record: 659-418-3 (22 years)  
Career Coaching Record: 750-429-3 (24 years)  
Baseball SID: Mike Lageschulte  
Work Phone: (319) 335-9411  
Home Phone: (319) 644-2781  
FAX Phone: (319) 335-9417  
Home Facility (Capacity): Iowa Field (3,000)  
Press Box Phone: (319) 335-9520  
Last Year's Record: 26-28-1  
Conference Record (Finish): 11-17 (Ninth)

## IOWA STATE

Location: Ames, Iowa  
50010

Enrollment: 25,489  
Nickname: Cyclones  
Colors: Cardinal and Gold  
Conference: Big Eight



Athletic Director: Max Urick  
Head Coach: Bobby Randall (Kansas State '69)  
ISU & Career Coaching Record: 201-208-1 (7 years)  
Baseball SID: Denise Seomin  
Work Phone: (515) 294-3372  
Home Phone: (515) 292-5404  
FAX Phone: (515) 294-0558  
Home Facility (Capacity): Cap Timm Field  
(3,000)  
Press Box Phone: (515) 294-7467  
Last Year's Record: 33-26  
Conference Record (Finish): 12-12 (Tie for Third)

## KANSAS STATE

Location: Manhattan, Kansas  
66502

Enrollment: 21,137  
Nickname: Wildcats  
Colors: Purple and White  
Conference: Big Eight



Athletic Director: Dr. Milt Richards  
Head Coach: Mike Clark (Missouri Western '75)  
KSU Coaching Record: 155-127 (5 years)  
Career Coaching Record: 438-263 (12 years)  
Baseball SID: Chris Theisen  
Work Phone: (913) 532-6735  
Home Phone: (913) 539-8817  
FAX Phone: (913) 532-6093  
Home Facility (Capacity): Frank Myers Field  
(5,000)  
Press Box Phone: (913) 532-6926  
Last Year's Record: 31-29  
Conference Record (Finish): 9-15 (Seventh)

## ST. FRANCIS (IL)

Location: Joliet, Illinois  
60435

Enrollment: 1,200  
Nickname: Saints  
Colors: Brown and Gold  
Conference: Chicagoland



Athletic Director: Pat Sullivan  
Head Coach: Gordon Gillespie  
CSF Record: 623-415 (15 years)  
Career Record: 1257-656 (39 years)  
Baseball SID: Dave Laketa  
Work Phone: (815) 740-3842  
Home Phone: (708) 257-5172  
FAX Phone: (815) 740-3841  
Home Facility: Gillespie Field (1,000)  
Press Box Phone: (815) 729-4510  
Last Year's Record: 28-34  
Conference Record (Finish): 7-4 (Second)

## GRAND VIEW

Location: Des Moines, Iowa  
50316

Enrollment: 1,400  
Nickname: Vikings  
Colors: Red and White  
Conference: Midwest  
Classic



Athletic Director: Lou Yacinich  
Head Coach: Lou Yacinich (Drake '63)  
GVC Record: 376-245 (10 years)  
Career Record: 523-392 (28 years)  
Baseball SID: Bob Hoeg  
Work Phone: (515) 263-2898  
Home Phone: (515) 226-9242  
FAX Phone: (515) 263-2998  
Last Year's Record: 27-32  
Conference Record (Finish): 7-2 (Second)

## UPPER IOWA

Location: Fayette, Iowa  
52142

Enrollment: 1,800  
Nickname: Peacocks  
Colors: Peacock Blue and  
White



Conference: Iowa  
Athletic Director: Mike McCready  
Head Coach: Rick Heller (Upper Iowa '86)  
UIU & Career Record: 58-83 (4 years)  
Baseball SID: Sandy Miller  
Work Phone: (319) 425-5266  
Home Phone: (319) 425-3503  
FAX Phone: (319) 425-5271  
Home Facility (Capacity): Robertson Woods  
(400)  
Last Year's Record: 22-13  
Conference Record (Finish): 9-7 (Fourth)



# 1992 NON-CONFERENCE OPPONENTS

## MANKATO STATE

Location: Mankato,  
Minnesota 56001  
Enrollment: 15,800  
Nickname: Mavericks  
Colors: Purple and Gold  
Conference: North  
Central  
Athletic Director: Donald  
Amiot  
Head Coach: Dean Bowyer (Mayville State '66)  
MSU & Career Record: 440-208-5 (15 years)  
Baseball SID: Paul Allan  
Work Phone: (507) 389-2625  
Home Phone: (507) 387-2373  
FAX Phone: (507) 389-1923  
Home Facility: Highland Field  
Last Year's Record: 22-13-2  
Conference Record: 8-2



## BRIAR CLIFF

Location: Sioux City,  
Iowa 51104  
Enrollment: 1,150  
Nickname: Chargers  
Colors: Blue and Gold  
Conference:  
Independent  
Athletic Director: Mike Crozier  
Head Coach: Dan McDermott (St. Mary's)  
BCC & Career Record: 100-68-2  
Baseball SID: Jerry Hanson  
Work Phone: (712) 279-1653  
Home Phone: (712) 252-0040  
FAX Phone: (712) 279-5592  
Home Facility: Bishop Mueller Field  
Last Year's Record: 26-27



## MT. MERCY

Location: Cedar Rapids,  
Iowa 52402  
Enrollment: 1,600  
Nickname: Mustangs  
Colors: Royal Blue and  
Gold  
Conference: NAIA  
District 15  
Athletic Director: Dave Lapan  
Head Coach: Curt Long  
MMC & Career Record: 119-110 (5 years)  
Baseball SID: Paul Gavin  
Work Phone: (319) 363-8213  
Home Phone: (319) 365-3515  
FAX Phone: (319) 363-5270  
Home Facility: Daniels Park  
Last Year's Record: 31-19



## WARTBURG

Location: Waverly,  
Iowa 50677  
Enrollment: 1,450  
Nickname: Knights  
Colors: Orange and  
Black  
Conference: Iowa  
Athletic Director: Bob  
Nielson  
Head Coach: John Kurtt (Wartburg '53)  
WC & Career Record: 116-178-1 (9 years)  
Baseball SID: Duane Schroeder  
Work Phone: (319) 352-8277  
Home Phone: (319) 352-3363  
FAX Phone: (319) 352-8514  
Home Facility (Capacity): Hertel Field (500)  
Press Box Phone: (319) 352-8442  
Last Year's Record: 10-22  
Conference Record (Finish): 8-8 (Fifth)



## CHICAGO STATE

Location: Chicago,  
Illinois 60628  
Enrollment: 7,600  
Nickname: Cougars  
Colors: White and  
Green  
Conference:  
Independent  
Athletic Director: Albert Avant  
Head Coach: Kevin McCray  
CSU Record: 202-264 (11 years)  
Career Record: 209-268 (12 years)  
Baseball SID: Lisette Allison-Moore  
Work Phone: (312) 995-2217  
Home Phone: (708) 756-0632  
FAX Phone: (312) 995-2217  
Home Facility: Chicago State Field  
Last Year's Record: 20-29





# MEDIA INFORMATION

**Credentials** for Northern Iowa games at Waterloo Municipal Stadium may be obtained by contacting Kevin Kane, Assistant Sports Information Director, at (319) 273-3642. Admission is not charged for home games at Panther Park on campus.

## NORTHERN IOWA PRIMARY MEDIA OUTLETS

### RADIO

KCFI Radio  
Kelly Neff, Sports Director  
721 Shirley St.  
Cedar Falls, IA 50613

KOEL Radio  
Joel McCrea  
4207 University Ave.  
Cedar Falls, IA 50613

KWLO Radio  
Bob Bakken, Sports Director  
P.O. Box 1330  
Waterloo, IA 50704

KXEL Radio  
Ed Anderson, Sports Director  
P.O. Box 1540  
Waterloo, IA 50704

WMT Radio  
Ron Gonder, Sports Director  
P.O. Box 2147  
Cedar Rapids, IA 52406

### NEWSPAPER

Waterloo Courier  
Kevin Evans, Sports Editor  
P.O. Box 540  
Waterloo, IA 50704

Des Moines Register  
Dave Witke, Sports Editor  
P.O. Box 957  
Des Moines, IA 50304

Cedar Rapids Gazette  
Mark Dukes, Sports Editor  
500 Third Ave., SE  
Cedar Rapids, IA 52401

Northern Iowan  
Julie Mitchell, Sports Editor  
Maucker Union  
University of Northern Iowa  
Cedar Falls, IA 50614

Associated Press  
Chuck Schoffner  
P.O. Box 1741  
Des Moines, IA 50306

### TELEVISION

KWWL-TV  
Bryan Lessly, Sports Director  
E. Fourth & Franklin  
Waterloo, IA 50703

KCRG-TV  
John Campbell, Sports Director  
Second Ave. at Fifth St., SE  
Cedar Rapids, IA 52401

KGAN-TV  
John Baer, Sports Director  
P.O. Box 3131  
Cedar Rapids, IA 52406

## KCFI TO BROADCAST PANTHER BASEBALL FOR FIRST TIME

KCFI Radio, 1250 AM, is scheduled to carry at least 36 Northern Iowa games live this season, the first time Panther Baseball has ever been broadcast. KCFI Sports Director Kelly Neff will handle the play-by-play duties on all broadcasts. Listed below is the tentative broadcast schedule with airtime for each game 10 minutes prior to the start:

March 28 @Indiana State (DH)  
March 29 @Indiana State  
March 31 @Northern Illinois (DH)  
April 1 @Iowa  
April 4 @Bradley (DH)  
April 5 @Bradley  
April 7 Iowa

April 8 Iowa State (DH)  
April 10 @Illinois State  
April 11 @Illinois State  
April 12 @Illinois State  
April 14 Kansas State  
April 15 @Iowa State (DH)  
April 18 Southern Illinois (DH)  
April 19 Southern Illinois  
April 21 Upper Iowa  
April 25 Creighton (DH)  
April 26 Creighton  
April 28 Grand View  
April 29 Mankato State (DH)  
May 1 Mt. Mercy

 Stereo am 1250

May 2 Southwest Missouri State (DH)  
May 3 Southwest Missouri State  
May 8 @Wartburg  
May 9 Chicago State (DH)  
May 10 Chicago State  
May 13-16 @Missouri Valley Conference Tournament



# MVC COMPOSITE SCHEDULE

Date	Game /Time	Date	Game /Time	Date	Game /Time
Fri., Feb. 21	Creighton at Creighton Classic (Omaha) TBA	Fri., Mar. 13	Wichita State at Grand Canyon 9:00 p.m.	Thu., Mar. 26	Illinois-Chicago at Illinois State (2) 1:00 p.m.
Sat., Feb. 22	Creighton at Creighton Classic (Omaha) TBA	Sat., Mar. 14	Illinois State at Miami 7:30 p.m.		St. Ambrose at Northern Iowa (2) 1:00 p.m.
	Arkansas State at Wichita State 1:00 p.m.		Indiana State at St. Louis 4:00 p.m.		Northeastern Illinois at Southern Illinois (2) 1:00 p.m.
Sun., Feb. 23	Creighton at Creighton Classic (Omaha) TBA		Northern Iowa vs. Ohio State (Louisville, KY) 2:00 p.m.		Northern Illinois at Wichita State 3:00 p.m.
Tue., Feb. 25	Pera State at Creighton 2:00 p.m.		Northern Iowa at Louisville 6:00 p.m.	Sat., Mar. 28	*Bradley at Creighton (2) 12:00 p.m.
Wed., Feb. 26	Grand View at Creighton 2:00 p.m.		Southern Illinois vs. Illinois (Miami) 9:00 a.m.		*Wichita State at Illinois State (2) 12:00 p.m.
	Oklahoma City at Wichita State 3:00 p.m.		Southern Illinois vs. Mercy (Miami) 12:00 p.m.		*Northern Iowa at Indiana State (2) 11:00 a.m.
Thu., Feb. 27	Wichita State at Kansas State 7:00 p.m.		Iowa at Southwest Missouri State (2) 1:00 p.m.		*Southern Illinois at Southwest Missouri (2) 12:00 p.m.
Fri., Feb. 28	Creighton vs. Louisiana Tech (Lake Charles, LA) 2:00 p.m.	Sun., Mar. 15	Wichita State at Grand Canyon 4:00 p.m.	Sun., Mar. 29	*Bradley at Creighton 1:00 p.m.
Sat., Feb. 29	Bradley at Evansville (2) 12:00 p.m.		Creighton at Best of the West Classic (Fresno, CA) TBA		*Wichita State at Illinois State 2:00 p.m.
	Creighton vs. Ohio State (Lake Charles, LA) 11:00 a.m.		Indiana State vs. Murray State (St. Louis, MO) 10:00 a.m.		*Northern Iowa at Indiana State 12:00 p.m.
	Creighton vs. McNeese State (Lake Charles, LA) 4:00 p.m.		Indiana State vs. Eastern Illinois (St. Louis, MO) 1:00 p.m.		*Southern Illinois at Southwest Missouri State 1:00 p.m.
	Wisconsin-Parkside at Indiana State 12:00 p.m.		Northern Iowa vs. Western Illinois (Louisville, KY) 9:00 a.m.	Tue., Mar. 31	Bradley vs. MacMurray (E. Peoria, IL) 3:00 p.m.
	Southern Illinois at Mississippi 1:00 p.m.	Mon., Mar. 16	Iowa at Southwest Missouri State 1:00 p.m.		Illinois State at St. Xavier (2) 12:30 p.m.
Sun., Mar. 1	Northeastern Illinois at Wichita State (2) 12:00 p.m.		Bradley at San Jose State Tournament TBA		Indiana at Indiana State 1:30 p.m.
	Bradley at Evansville 1:30 p.m.		Creighton at Best of the West Classic TBA		Northern Iowa at Northern Illinois (2) 1:00 p.m.
	Creighton vs. Ohio State (Lake Charles, LA) 12:00 p.m.		Northern Iowa at Central Missouri State 2:30 p.m.	Wed., Apr. 1	Missouri Western at Southwest Missouri State 2:30 p.m.
	Wisconsin-Parkside at Indiana State 12:00 p.m.		Southern Illinois vs. Rutgers (Miami) 10:00 a.m.		Kansas at Wichita State 7:00 p.m.
	Southern Illinois at Mississippi 2:00 p.m.		Colorado State at Southwest Missouri State 2:30 p.m.		Bradley at Western Illinois 3:00 p.m.
	St. Louis at Southwest Missouri State (2) 1:00 p.m.	Tue., Mar. 17	Bradley at San Jose State Tournament TBA		Creighton at Nebraska 7:00 p.m.
	Northeastern Illinois at Wichita State 1:00 p.m.		Creighton at Best of the West Classic TBA		Olivet Nazarene at Illinois State (2) 1:00 p.m.
Tue., Mar. 3	Creighton at Louisiana College 7:00 p.m.		Northern Illinois at Illinois State (2) 1:00 p.m.		Indiana State at Eastern Illinois (2) 1:00 p.m.
	Kansas State at Southwest Missouri State (2) 1:00 p.m.		Indiana State at Evansville 2:00 p.m.		Northern Iowa at Iowa 2:00 p.m.
	Nebraska at Wichita State 3:00 p.m.		Northern Iowa at St. Louis 2:00 p.m.		Wichita State at Kansas 7:00 p.m.
Wed., Mar. 4	Bradley at St. Louis (2) 1:00 p.m.		Southern Illinois vs. Florida International (Miami) 6:00 p.m.	Thu., Apr. 2	Southern Illinois at St. Louis 3:00 p.m.
	Creighton at Southeastern Louisiana 7:00 p.m.	Wed., Mar. 18	Wichita State at Oklahoma State 7:00 p.m.		Bradley vs. Chicago State (2) (E. Peoria, IL) 1:00 p.m.
	Eastern Illinois at Indiana State (2) 12:00 p.m.		Bradley at San Jose State Tournament TBA		St. Louis at Indiana State (2) 2:00 p.m.
	Northern Iowa vs. Dubuque (2) (Minneapolis) 1:30 p.m.		Creighton at Best of the West Classic TBA	Fri., Apr. 3	Austin Peay at Southern Illinois 3:00 p.m.
	Southwest Missouri State at Arkansas 3:00 p.m.		Illinois State at Lewis 3:00 p.m.		*Southwest Missouri State at Wichita State 7:00 p.m.
Thu., Mar. 5	Centenary at Wichita State 3:00 p.m.		Evansville at Indiana State 2:00 p.m.	Sat., Apr. 4	*Creighton at Southern Illinois 3:00 p.m.
Fri., Mar. 6	Centenary at Wichita State 3:00 p.m.		Northern Iowa at Memphis State (2) 3:00 p.m.		*Northern Iowa vs. Bradley (2) (Normal, IL) 12:00 p.m.
	Creighton vs. Oklahoma State (Lafayette, LA) 12:00 p.m.		Southern Illinois vs. Rutgers (Miami) 10:00 a.m.		*Creighton at Southern Illinois 1:00 p.m.
	Illinois State at Arkansas 3:00 p.m.		Southwest Missouri at Southeast Missouri (2) 1:00 p.m.		*Illinois State at Indiana State (2) 2:00 p.m.
	Eastern Kentucky at Southern Illinois 2:00 p.m.	Thu., Mar. 19	Bradley at San Jose State Tournament TBA		*Southwest Missouri State at Wichita State 7:00 p.m.
	New Mexico State at Wichita State 3:00 p.m.		Creighton at Best of the West Classic TBA	Sun., Apr. 5	*Northern Iowa vs. Bradley (Normal, IL) 1:00 p.m.
Sat., Mar. 7	Bradley at Murray State Tournament TBA		Southern Illinois vs. Columbia (Miami) 10:00 a.m.		*Creighton at Southern Illinois 1:00 p.m.
	Creighton vs. Maine (Lafayette, LA) 12:00 p.m.		Southwest Missouri State at Memphis State 2:00 p.m.		*Illinois State at Indiana State 1:00 p.m.
	Creighton vs. SW Louisiana (Lafayette, LA) 7:00 p.m.	Fri., Mar. 20	Bradley at San Jose State Tournament TBA		*Southwest Missouri State at Wichita State 1:00 p.m.
	Illinois State at Arkansas 2:00 p.m.		Creighton at Best of the West Classic TBA	Tue., Apr. 7	Bradley vs. Illinois Wesleyan (E. Peoria, IL) 3:00 p.m.
	Indiana State at Austin Peay 1:00 p.m.		*Northern Iowa at Wichita State 7:00 p.m.		Illinois State at Illinois 3:00 p.m.
	Northern Iowa at Air Force (2) 12:00 p.m.		Southern Illinois at Miami 6:30 p.m.		Austin Peay at Indiana State 5:30 p.m.
	Iowa at Southern Illinois 12:00 p.m.	Sat., Mar. 21	Bradley at San Jose State Tournament TBA		Iowa at Northern Iowa 2:00 p.m.
	Arkansas State at Southwest Missouri State 1:00 p.m.		Creighton at Best of the West Classic TBA		Evansville at Southern Illinois 3:00 p.m.
	New Mexico State at Wichita State 2:00 p.m.		Illinois-Chicago at Illinois State (2) 12:00 p.m.		Kansas at Southwest Missouri State 4:00 p.m.
Sun., Mar. 8	Bradley at Murray State Tournament TBA		Western Michigan at Indiana State (2) 12:00 p.m.		Arkansas at Wichita State 7:00 p.m.
	Creighton vs. Oklahoma State (Lafayette, LA) 12:00 p.m.		*Northern Iowa at Wichita State 7:00 p.m.	Wed., Apr. 8	Bradley vs. Northern Illinois (2) (Notre Dame HS, Peoria) 1:00 p.m.
	Illinois State at Arkansas 2:00 p.m.		Southern Illinois at Miami 6:30 p.m.		Kansas State at Creighton 2:00 p.m.
	Northern Iowa at Air Force (2) 12:00 p.m.	Sun., Mar. 22	Southwest Missouri State at South Alabama 6:30 p.m.		Northeastern Illinois at Illinois State (2) 3:00 p.m.
	Northern Illinois at Southern Illinois 1:00 p.m.		Illinois-Chicago at Illinois State (2) 1:00 p.m.		St. Joseph's at Indiana State 7:30 p.m.
	Arkansas State at Southwest Missouri State 1:00 p.m.		Western Michigan at Indiana State 12:00 p.m.		Iowa State at Northern Iowa (2) 1:30 p.m.
	New Mexico State at Wichita State 1:00 p.m.		*Northern Iowa at Wichita State 2:00 p.m.		Eastern Illinois at Southern Illinois (2) 1:00 p.m.
Mon., Mar. 9	Indiana State at Vanderbilt 2:00 p.m.		Southwest Missouri State at South Alabama 1:30 p.m.		Kansas at Southwest Missouri State 3:30 p.m.
	Northern Iowa at Nebraska (2) 1:00 p.m.	Mon., Mar. 23	Southwest Missouri State at Jackson State 2:30 p.m.		Arkansas at Wichita State 5:00 p.m.
Tue., Mar. 10	Illinois State at Florida International 7:00 p.m.		Bradley vs. Purdue (E. Peoria, IL) 3:00 p.m.	Thu., Apr. 9	Valparaiso at Indiana State (2) 3:00 p.m.
	Indiana State at Memphis State 2:00 p.m.		Illinois at Illinois State 3:00 p.m.		Southern Illinois at Murray State 3:00 p.m.
	Southern Illinois at Arkansas State 2:00 p.m.		Indiana-Purdue at Indiana State 2:00 p.m.	Fri., Apr. 10	*Wichita State at Creighton TBA
	Missouri at Southwest Missouri State 2:00 p.m.		Wisconsin-Milwaukee at Northern Iowa (2) 1:30 p.m.		*Northern Iowa at Illinois State 7:00 p.m.
Wed., Mar. 11	Bradley at SIU-Edwardsville (2) 1:00 p.m.		Louisville at Southern Illinois 2:00 p.m.	Sat., Apr. 11	*Bradley at Southern Illinois (2) 12:00 p.m.
	Grand View at Creighton 2:00 p.m.		Southwest Missouri State at Southern Mississippi 6:00 p.m.		*Wichita State at Creighton TBA
	Illinois State at Florida International 7:00 p.m.		Wichita State at Kansas State 7:00 p.m.		*Northern Iowa at Illinois State 7:00 p.m.
	Lincoln at Southwest Missouri State 2:30 p.m.		Bradley vs. Illinois (E. Peoria, IL) 3:00 p.m.		*Southern Illinois at Indiana State (2) 3:00 p.m.
Thu., Mar. 12	Nebraska-Kearney at Creighton 2:00 p.m.	Wed., Mar. 25	Kansas at Creighton 2:00 p.m.	Sun., Apr. 12	Bradley at Southern Illinois 1:00 p.m.
	Illinois State vs. Pace (Miami, FL) 11:00 a.m.		Illinois State at Western Illinois 3:00 p.m.		*Wichita State at Creighton TBA
	Indiana State at Middle Tennessee State 3:00 p.m.		Butler at Indiana State (2) 1:00 p.m.		*Northern Iowa at Illinois State 1:00 p.m.
	Wichita State at Grand Canyon 9:00 p.m.		Wisconsin-Milwaukee at Northern Iowa 1:00 p.m.		*Southwest Missouri State at Indiana State 1:00 p.m.
Fri., Mar. 13	Illinois State at Miami 7:30 p.m.		Northeastern at Southern Illinois 3:00 p.m.	Tue., Apr. 14	Bradley vs. St. Ambrose (2) (Notre Dame H.S.) 1:00 p.m.
	Indiana State at Middle Tennessee State 2:00 p.m.		Southwest Missouri State at Mississippi 5:00 p.m.		Nebraska-Omaha at Creighton 1:30 p.m.
	Southern Illinois vs. Illinois (Miami) 9:00 a.m.		Northern Illinois at Wichita State 7:00 p.m.		McKendree at Illinois State (2) 1:00 p.m.
	Southern Illinois vs. Pace (Miami) 12:00 p.m.				Illinois at Indiana State 7:00 p.m.
	Iowa at Southwest Missouri State 2:30 p.m.				



Date	Game /Time
Tue., Apr. 14	Kansas State at Northern Iowa 2:00 p.m. Southern Illinois at Kentucky 3:00 p.m. Southwest Missouri State at Kansas 7:00 p.m. Oklahoma at Wichita State 7:00 p.m.
Wed., Apr. 15	Bradley at Eastern Illinois (2) 1:00 p.m. Nebraska at Creighton 3:00 p.m. Western Illinois at Illinois State 3:00 p.m. Missouri at Indiana State 5:00 p.m. Northern Iowa at Iowa State (2) 1:30 p.m. St. Louis at Southern Illinois 3:00 p.m. Southwest Missouri State at Kansas 3:00 p.m. Oklahoma State at Wichita State 7:00 p.m.
Thu., Apr. 16	Northern Iowa vs. St. Francis (IL) (Des Moines) 11:30 a.m. Northern Iowa at Grand View 2:00 p.m. Southern Illinois at SIU-Edwardsville (St. Louis, MO) 1:00 p.m. Kansas State at Wichita State
Sat., Apr. 18	*Bradley at Wichita State (2) 2:00 p.m. *Indiana State at Creighton (2) 12:00 p.m. *Illinois State at Southwest Missouri State (2) 12:00 p.m. *Southern Illinois at Northern Iowa (2) 5:00 p.m.
Sun., Apr. 19	*Bradley at Wichita State 2:00 p.m. *Indiana State at Creighton 1:00 p.m. *Illinois State at Southwest Missouri State 1:00 p.m. *Southern Illinois at Northern Iowa 5:00 p.m.
Mon., Apr. 20	Notre Dame at Indiana State 7:00 p.m.
Tue., Apr. 21	Valparaiso at Bradley (2) 3:30 p.m. Creighton at Kansas State 7:00 p.m. St. Xavier at Illinois State 3:00 p.m. Xavier at Indiana State (2) 3:00 p.m. Upper Iowa at Northern Iowa 3:00 p.m. Southern Illinois at Missouri (2) 2:00 p.m. Southwest Baptist at Southwest Missouri State 3:00 p.m. Wichita State at Oklahoma 7:00 p.m.

Date	Game /Time
Wed., Apr. 22	Northeastern Illinois at Bradley (2) 5:30 p.m. Creighton at Kansas TBA Illinois State at Eastern Illinois (2) 1:00 p.m. Northern Iowa at Wisconsin-Milwaukee (2) 2:00 p.m. Southeast Missouri at Southwest Missouri (2) 2:00 p.m. Kansas State at Wichita State 7:00 p.m.
Fri., Apr. 24	*Southern Illinois at Illinois State 7:00 p.m. *Wichita State at Indiana State 7:00 p.m.
Sat., Apr. 25	*Southwest Missouri at Bradley (2) 12:00 p.m. *Creighton at Northern Iowa (2) 5:00 p.m. *Southern Illinois at Illinois State 7:00 p.m. *Wichita State at Indiana State 7:00 p.m.
Sun., Apr. 26	*Southwest Missouri at Bradley 1:00 p.m. *Creighton at Northern Iowa 1:00 p.m. *Southern Illinois at Illinois State 1:00 p.m. *Wichita State at Indiana State 1:00 p.m.
Tue., Apr. 28	Western Illinois at Bradley 5:30 p.m. St. Joseph's at Illinois State (2) 3:00 p.m. Indiana State at Illinois 3:00 p.m. Grand View at Northern Iowa 2:00 p.m. Southern Illinois at Evansville 7:00 p.m. Kansas at Wichita State 7:00 p.m.
Wed., Apr. 29	Bradley at Northern Illinois (2) 1:00 p.m. Iowa State at Creighton (2) 1:30 p.m. St. Louis at Illinois State (2) 1:00 p.m. Mankato State at Northern Iowa (2) 2:00 p.m. Southwest Missouri State at Arkansas State (2) 2:00 p.m. Wichita State at Kansas 7:00 p.m.
Thu., Apr. 30	Northern Iowa at Briar Cliff 1:30 p.m. Arkansas at Southwest Missouri State 4:00 p.m. Mt. Mercy at Northern Iowa 2:00 p.m.
Fri., May 1	*Southern Illinois at Wichita State 7:00 p.m. *Illinois State at Creighton (2) 12:00 p.m. *Indiana State at Bradley (2) 12:00 p.m.

Date	Game /Time
Sat., May 2	*Southwest Missouri at Northern Iowa (2) 12:00 p.m. *Southern Illinois at Wichita State 7:00 p.m.
Sun., May 3	*Illinois State at Creighton 1:00 p.m. *Indiana State at Bradley 1:00 p.m. *Southwest Missouri at Northern Iowa 12:00 p.m. *Southern Illinois at Wichita State 2:00 p.m.
Mon., May 4	Creighton at Iowa State 2:00 p.m.
Tue., May 5	Bradley at Illinois-Chicago (2) 5:00 p.m. Murray State at Southern Illinois 3:30 p.m. Southwest Missouri at Kansas State (2) 1:00 p.m.
Wed., May 6	Northwest Missouri at Creighton (2) 1:30 p.m. Southeast Missouri at Southern Illinois 3:00 p.m. Texas-Arlington at Wichita State 7:00 p.m.
Thu., May 7	Southern Illinois at Austin Peay 3:00 p.m. Texas-Arlington at Wichita State 7:00 p.m.
Fri., May 8	*Bradley at Illinois State 7:30 p.m. *Creighton at Southwest Missouri State 4:00 p.m. Northern Iowa at Wartburg 3:00 p.m. Central Missouri State at Wichita State 7:00 p.m.
Sat., May 9	*Bradley at Illinois State (2) 4:00 p.m. *Creighton at Southwest Missouri State 2:00 p.m. *Indiana State at Southern Illinois (2) 12:00 p.m. Chicago State at Northern Iowa (2) 12:00 p.m. Central Missouri State at Wichita State 1:00 p.m.
Sun., May 10	*Creighton at Southwest Missouri 1:00 p.m. Illinois State at Illinois Wesleyan 7:00 p.m. *Indiana State at Southern Illinois 1:00 p.m. Chicago State at Northern Iowa 11:00 a.m. MVC Tournament (Wichita, KS)
Wed.-Sat., May 13-16	

\*MVC Game

All times listed are Central Standard or Daylight Time

## FACILITIES

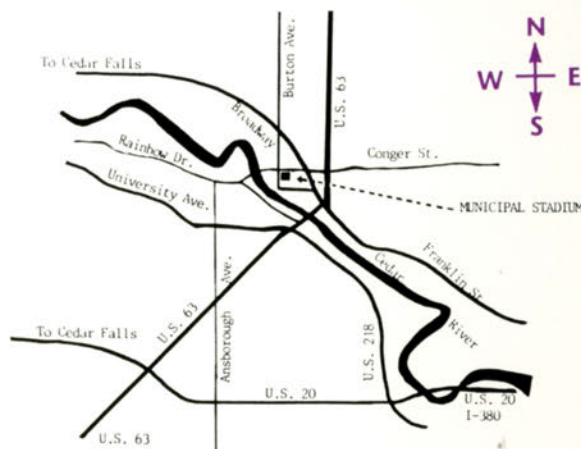
Just prior to the start of the 1992 season, Northern Iowa athletic officials reached agreement with the City of Waterloo to play a majority of Panther home games, including all Missouri Valley Conference games, at Municipal Stadium in Waterloo. The team will play a handful of home dates at Panther Park on the UNI campus.

A 10-minute drive from the Northern Iowa campus, Municipal Stadium has been the home of professional baseball in Waterloo since its construction in 1948. The city-owned facility is currently home to the San Diego Padres Class A franchise in the Midwest League.

Seating capacity is 4,277 with distances to the double-decked outfield fence measuring 335 feet down the left-and right-field lines, 360 feet in the power alleys and 380 to center field.

The spacious press box provides ample seating for newspapers and radio stations in addition to a deck to accommodate television.

For off-season conditioning and practice, Northern Iowa is blessed with one of the finest indoor facilities anywhere. The spacious 16,400-seat UNI-Dome, constructed in 1976, is home to Northern Iowa Athletics and many of its teams. The adjoining Physical Education Center provides state-of-the-art weight training facilities while the Dome itself allows for a spacious indoor environment for practice when inclement weather prevents outdoor workouts.





# 1992 NORTHERN IOWA BASEBALL

Sunday	Monday	Tuesday	Wednesday	Thursday	Friday	Saturday
<b>MARCH</b>						
1	2	3	Dubuque (DH) 4 1:30 p.m. Minneapolis (MetroDome)	5	6	7 @Air Force (DH) 11 a.m.
8 @Air Force (DH) 11 a.m.	9 @Nebraska (DH) 1 p.m. Lincoln, NE	10	11	12	13	14 Ohio St. 3 p.m. @ Louisville 7 p.m. (Derby City Classic) Louisville, KY
15 Western Illinois 10 a.m. (Derby City Classic) Louisville, KY	16 @Central Missouri State 2:30 p.m.	17 @St. Louis 2 p.m.	18 @Memphis State (DH) 3 p.m.	19	20 @Wichita State* 7 p.m.	21 @Wichita State* 7 p.m.
22 @Wichita State* 2 p.m.	23	24 WISCONSIN- MILWAUKEE (DH) 1:30 p.m. Cedar Falls	25 WISCONSIN- MILWAUKEE 1 p.m. Cedar Falls	26 ST. AMBROSE (DH) 1 p.m. Cedar Falls	27	28 @Indiana State* (DH) 12 noon
29 @Indiana State* 1 p.m.	30	31 @Northern Illinois (DH) 1 p.m.				
<b>APRIL</b>			1 @Iowa 2 p.m.	2	3	4 Bradley* (DH) 12 noon Normal, IL
5 Bradley* (DH) 1 p.m. Normal, IL	6	7 IOWA 2 p.m. Waterloo	8 IOWA STATE (DH) 1:30 p.m. Waterloo	9	10 @Illinois State* 7 p.m.	11 @Illinois State* 7 p.m.
12 @Illinois State* 1 p.m.	13	14 KANSAS STATE 2 p.m. Waterloo	15 @Iowa State* (DH) 1:30 p.m.	16 St. Francis (IL) 11:30 a.m. @Grand View 2 p.m. Des Moines	17	18 SOUTHERN ILLINOIS* (DH) 5 p.m. Waterloo
19 SOUTHERN ILLINOIS* 5 p.m. Waterloo	20	21 UPPER IOWA 3 p.m. Cedar Falls	22 @Wisconsin- Milwaukee (DH) 2 p.m.	23	24	25 CREIGHTON* (DH) 5 p.m. Waterloo
26 CREIGHTON* 1 p.m. Waterloo	26 GRAND VIEW 2 p.m. Cedar Falls	28	29 MANKATO STATE (DH) 2 p.m. Cedar Falls	30 @Briar Cliff 1:30 p.m.		
<b>MAY</b>					1 MT. MERCY 2 p.m. Cedar Falls	2 SOUTHWEST MISSOURI STATE* (DH) 12 noon Waterloo
3 SOUTHWEST MISSOURI STATE* 12 noon Waterloo	4	5	6	7	8 @Wartburg 3 p.m.	9 CHICAGO STATE (DH) 7 p.m. Waterloo
10 CHICAGO STATE 11 a.m. Cedar Falls	11	12	13 Missouri Valley Tournament Wichita, KS	14 Missouri Valley Tournament Wichita, KS	15 Missouri Valley Tournament Wichita, KS	16 Missouri Valley Tournament Wichita, KS
17	18	19	20	21	22	23
24/31	25	26	27	28	29	30

\* Missouri Valley Conference game

All times local.

Games played in WATERLOO at Municipal Stadium.