

1991

Northern Iowa Volleyball 1991

University of Northern Iowa

Let us know how access to this document benefits you

Copyright ©1991 Athletics, University of Northern Iowa

Follow this and additional works at: <https://scholarworks.uni.edu/amg>



Part of the [Higher Education Commons](#)

Recommended Citation

University of Northern Iowa, "Northern Iowa Volleyball 1991" (1991). *Athletics Media Guides*. 172.
<https://scholarworks.uni.edu/amg/172>

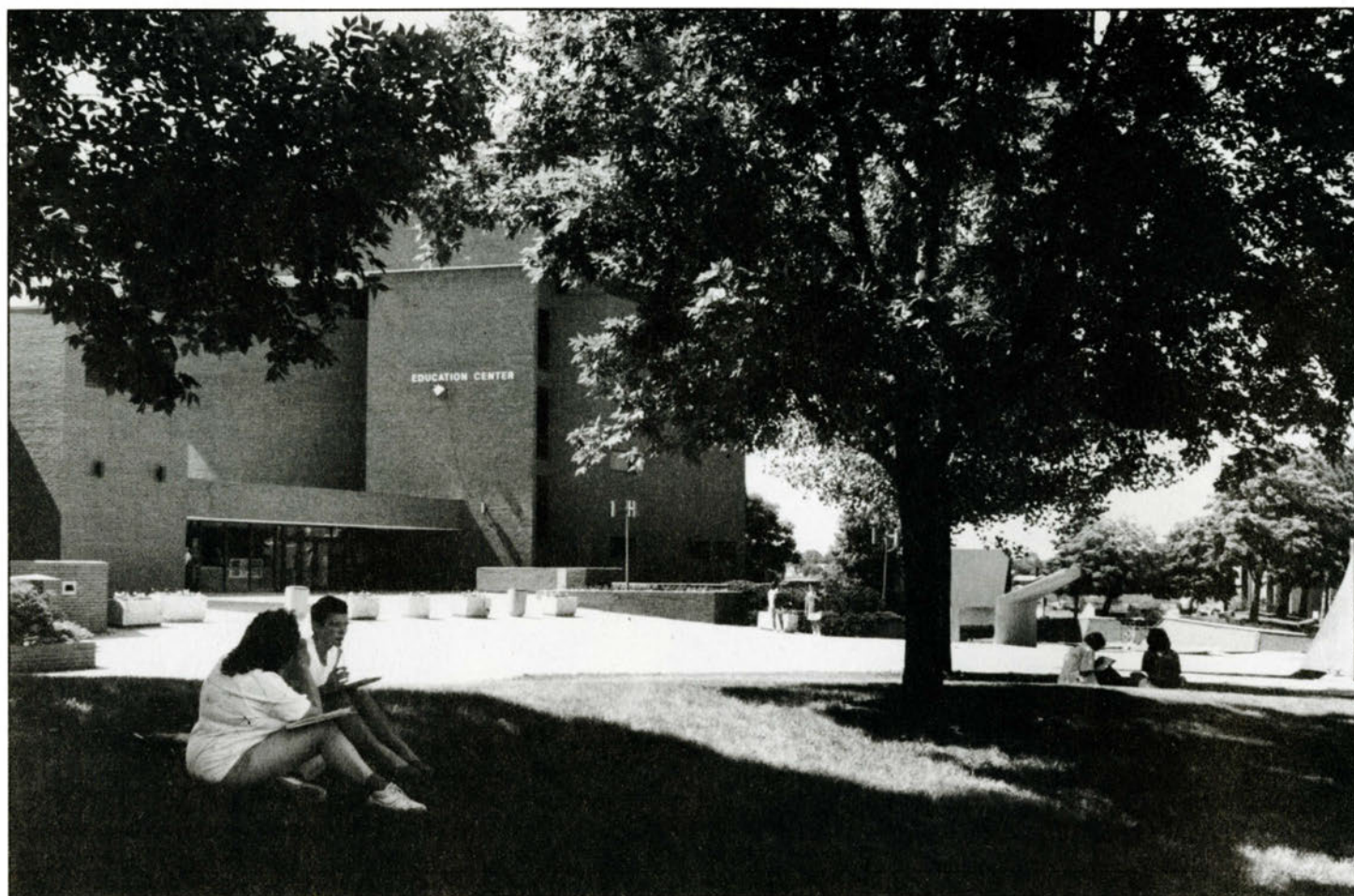
This Book is brought to you for free and open access by the Athletics at UNI ScholarWorks. It has been accepted for inclusion in Athletics Media Guides by an authorized administrator of UNI ScholarWorks. For more information, please contact scholarworks@uni.edu.

Offensive Materials Statement: Materials located in UNI ScholarWorks come from a broad range of sources and time periods. Some of these materials may contain offensive stereotypes, ideas, visuals, or language.

Northern Iowa Volleyball 1991



This is Northern Iowa



For 115 years, the University of Northern Iowa has been committed to providing quality undergraduate education for its students.

The University has expanded its historic mission of teacher preparation to include a number of outstanding programs in business, natural sciences, humanities and fine arts, and social and behavioral sciences, with complementary graduate programs at the master's, specialist's and doctoral levels. At Northern Iowa, you may earn a bachelor's degree in more than 120 majors. In addition to the traditional strength in teacher education, UNI's accounting and business programs are ranked among the best in the nation. But the options don't end there: strong academic programs ranging from art to marketing, biology to music, and industrial technology to social work are just a few of the avenues to be explored.

The University of Northern Iowa is small enough to offer individualized attention, yet large enough to provide a variety of resources and opportunities.

Although several historical buildings dot the campus, it is steadily growing to meet the academic needs of the students. The University has moved into the future with a library automation system, a \$10.2 million home for the College of Business Administration and expansion of the Maucker University Union. A variety of computer resources are available to students in more than a dozen areas on campus.

Although the majority of UNI's 12,600 students come from every county in Iowa, students from more than 40 states and 28 countries foster a rich, diverse atmosphere.

Students enter the University well-prepared, demonstrated by their selection of high school courses and rank in class. In recent years, over 90 percent of the entering freshmen ranked in the top 50 percent of their high school classes, with about 60 percent ranking in the top 30 percent.

Northern Iowa's 19 men's and women's intercollegiate athletics programs compete at the NCAA Division I level (I-AA in football) with major conference affiliations. The Panthers boast a nationally recognized coaching staff to maintain strong programs in basketball, wrestling, football, volleyball, track and field, and softball. All have made recent appearances in the NCAA Division I Championships.

UNI is located in Cedar Falls, an inviting and historic northeast Iowa community of about 35,000 people. Together with the adjacent city of Waterloo, the metropolitan area has a population of approximately 110,000 and combines big city opportunities with small town friendliness.

Contents

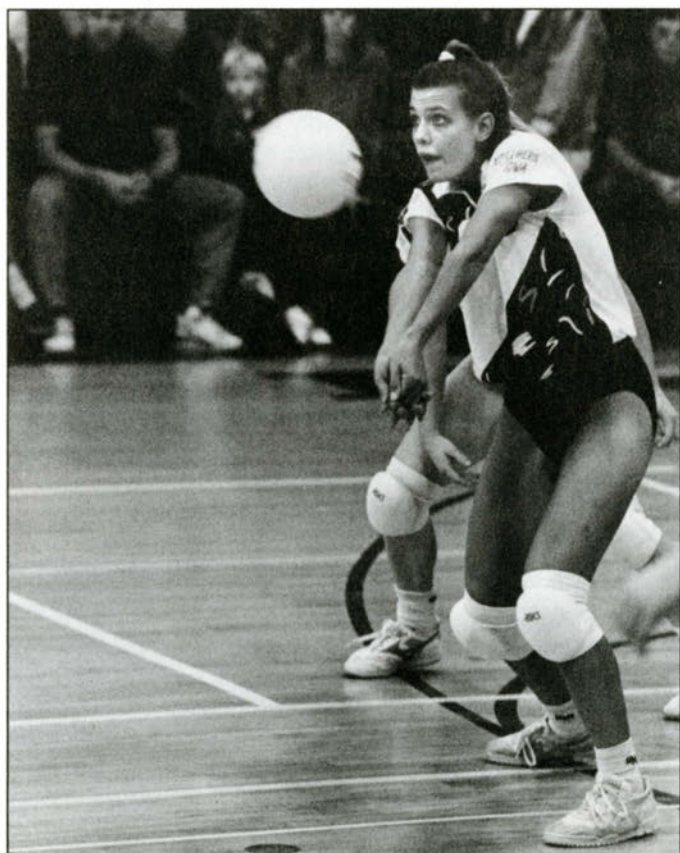
This is Northern Iowa.....	IFC
UNI Quick Facts.....	1
1991 Outlook	2
Coaching Staff	3
Players	4-7
1991 Roster	8
1990 Statistics	9
Record Book	10-13
1991 Opponents	14-16

Credits

The 1991 Northern Iowa Volleyball Yearbook was written and edited by Kevin Kane, Assistant Director of Sports Information. Production assistance was provided by Merri Moser, Kristen Kroemer and Gita Aditirto of the Office of Public Relations. Photographs were provided by Bill Witt, David Wagner and Kara Nandell in the same office. Printed by Woolverton Printing Company.

On the Cover:

Gateway all-Conference selection Chris Less



Senior Kristie Oleen

UNI Quick Facts

Location: Cedar Falls, Iowa 50614

Founded: 1876

Enrollment: 13,000

Nickname: Panthers

Colors: Purple and Old Gold

Facility: West Gym (2,500)

Conference: Gateway Collegiate Athletic

President: Dr. Constantine Curris

Director of Athletics: Eldon Miller

Sports Information Director:

Nancy Justis

Assistant SID (Volleyball): Kevin Kane

Phone: (O) 319/273-3642;

(H) 319/277-6828

Head Volleyball Coach:

Dr. Iradge Ahrabi-Fard (UNI '65)

Office Phone: 319/273-6480

Assistant Coach: Jan Bittner

(Valparaiso '76)

Assistant Coach: Sheng Gao

(Beijing '83)

Head Athletic Trainer: Terry Noonan

Assistant Trainer (Volleyball):

Marchell Austin

1990 Record: 28-5

(9-0 in Gateway, 1st)



1991 Preview

Northern Iowa coach Iradje Ahrabi-Fard figures he may have to work a little harder this season than in recent years. Not that the 11th-year head coach has been neglecting his duties in recent years; it's just that this 1991 version of the Panthers may require a little more patience and fine tuning than some recent teams.

"This team is the most unknown to me heading into the season as any team I've had," Ahrabi-Fard said. "But, potentially, it also has more talent than any team before. However, the most important element in any team is the chemistry, and we'll have to see if this team is able to develop that."

Ahrabi-Fard also believes the 1991 Panther squad will be more balanced than most of its predecessors.

"Most years, we've known going in that we're going to be strong in a certain area," he said. "For several years, our outside hitters were strong, then last year our middle play and blocking; our setting has always been pretty good, but this year, I don't know."

"One thing I'm very encouraged about is the dedication of this team," Ahrabi-Fard added. "This group seems to be the hardest working and most dedicated as far as off-season conditioning that we've had. They're very unselfish and team oriented."

Headlining the returnees from last year's squad is second team all-conference pick Chris Less (Lone Tree, IA), a middle hitter who is on pace to surpass all the school's block records and is already the career hitting percentage leader. The 6-0 senior has been remarkably consistent throughout her collegiate career and figures to be one of the league's top players again in 1991.

Senior Kristie Oleen (Blaine, MN) and junior Stacy Makoben (Stockton, IA) will be counted on to provide the majority of UNI's offensive punch from the outside. Both have struggled with consistency during their careers, but have the ability to dominate a match. Ahrabi-Fard feels with another year of maturity, they will provide the Panthers with a top-notch outside combination.

Sophomore Tricia Mills (Iowa Falls, IA) started every match last season as an outside hitter and was a solid contributor from the start. She ranked among the Gateway's top blockers last season and plans call for her to see more action in the middle this season.

The wild card for the Panthers, offensively, will be senior Kris Schroeder (Dubuque, IA). Schroeder was a second team all-conference selection as a junior in 1989 after enjoying one of the finest seasons in school history. Her season was cut short in the last regular-season match by a knee injury and subsequent reconstructive surgery forced her to miss last season. If she is able to perform at the level she did prior to the injury, or close to it, it will be icing on the cake for Ahrabi-Fard and the Panthers and give a real boost to the team's title hopes.

Senior Katie Crowley (Springfield, IL) is the favorite to take over as the top setter. Although her playing time was limited a year ago, she is not a stranger to the role as UNI's top setter. Crowley led the Panthers to an 8-1 conference mark and an appearance in the post-season tournament as a freshman in 1988, but was sidelined by illness in 1989. Ahrabi-Fard feels her leadership and experience will be



Senior setter Katie Crowley

valuable in 1991 and minimize the loss of Kreple. Crowley, however, will have to fight off the challenge of redshirt freshman Dionne Pettit (Dubuque, IA), who came to the UNI program a year ago with impressive high school credentials.

Others expected to supply added offensive punch are sophomore Julie Siegler (Burlington, WI), redshirt freshman Natalie Walters (Waterloo, IA) and true freshman Carrie Shurr (Iowa City, IA).

Siegler played a key role last season as a freshman while Shurr will be groomed to take over in the middle after Less' graduation.

The Panthers have been blessed with outstanding back row players in recent years and the current group may be the best ever, considering they are only juniors. Leading the way is Dawn Meester (Dike, IA), one of the nation's best servers in addition to her fine defense in the back row. She ranked 10th in the country last season after serving a school-record 86 aces for a 0.71 average.

Jennifer Becker (Dike, IA) quietly and consistently turns in stellar performances in the back row, ranking third in digs and aces last season among returning players. She posted the best service ace to error ratio on the squad.

Danice Niemeyer (Sumner, IA) returns after earning a spot as a walk-on last year and will provide added depth in the back row.

Ahrabi-Fard figures his team will again be a top contender for the Gateway Conference crown if all goes as planned. He tabs Wichita State, with five starters back from last year's 6-3 team, as the team to beat along with perennial powers Southwest Missouri State and Illinois State.

The 1991 schedule is the most ambitious in school history with nine teams that saw post-season action a year ago on the slate, including Final Four participant Louisiana State, which has all six starters back. Other non-conference opponents include San Diego State, Boise State, Cal State Northridge, Idaho State, Iowa, Iowa State, Northwestern, Minnesota, Kansas State and Dayton.

Coaching Staff



Head Coach Iradige Ahrabi-Fard

Recognized as one of the most successful collegiate coaches in the Midwest, Dr. Iradige Ahrabi-Fard will have the opportunity to reach another coaching milestone in the 1991 season. With 22 more wins, Ahrabi-Fard will reach the 300-victory plateau in his 11th season as a collegiate head coach. In his 10 seasons with the Panthers, Ahrabi-Fard has compiled a 278-98-4 record for a .737 winning percentage.

Ahrabi-Fard guided the Panthers to a 28-5 overall record last season, 9-0 in the Gateway Conference for UNI's third regular-season league title in the last five years. Last season marked the second consecutive year UNI earned a berth in the Women's Invitational Volleyball Championship.

Under his guidance, the Panthers have reached new heights over the last six years, recording a 189-36 mark overall, 49-5 in the Gateway, three conference championships, two NCAA berths and two WIVC appearances.

He was voted Gateway Coach of the Year in 1985 and 1987, and earned recognition as

Midwest Region Coach of the Year by his peers in 1985. He has also been invited to instruct at some of the top volleyball camps in the nation.

A 1965 graduate of UNI, Ahrabi-Fard has long been involved in athletics on the international level. In his native Iran, he served as President of the Institution of Sports from 1967 thru 1969, head swimming coach for the men's and women's national teams from 1967 thru 1970, Executive Director of the Education Department of Sports Ministry in 1970, and Vice-Minister of Sports Ministry from 1977 thru 1978. He also served as special physical educator for the Crown Prince and Princess of Iran.

As an athlete, Ahrabi-Fard competed on the Iranian national volleyball team internationally and in the Asian Games. He also was a high jumper on the national track and field team and competed his freshman year at UNI.

He was a successful high school coach in several sports at Northern University High School in Cedar Falls prior to taking the UNI job, earning various district, regional and state coach of the year honors in volleyball, track and field, and swimming.

After earning his bachelor's degree in physical education, Ahrabi-Fard received his master's in physical education from UNI in 1966 and his doctorate in physical education and educational administration from the University of Minnesota in 1975.

Ahrabi-Fard's Career Coaching Record

Year	School	Record	Pct.	Conf	Place
1981	Northern Iowa	40-8-3	.814	*	*
1982	Northern Iowa	38-19-1	.664	—	—
1983	Northern Iowa	21-20	.512	4-5	T5th
1984	Northern Iowa	16-16	.500	4-5	6th
1985	Northern Iowa	23-6	.793	7-2	3rd
1986	Northern Iowa	30-3	.909	8-1	1st **
1987	Northern Iowa	34-5	.872	9-0	1st **
1988	Northern Iowa	23-10	.697	8-1	T1st
1989	Northern Iowa	25-6	.806	8-1	2nd
1990	Northern Iowa	28-5	.848	9-0	1st #
10 Yrs.		278-98-4	.737	57-15	

* AIAW Division II

— First year in NCAA Division I; began Gateway Conference play in 1983.

** Won CCAC tournament and participated in NCAA Championships.

Won regular-season title; placed second in post-season tournament.



Assistant Coach Jan Bittner

Assistant coach Jan Bittner begins her 10th season at UNI after becoming the school's first assistant in 1982.

In addition to her on-court duties, Bittner is UNI's recruiting coordinator and handles most administrative duties of the program including scheduling, team travel and coordination of the summer volleyball camps.

A native of Rockford, IL, Bittner is a 1976 graduate of Valparaiso University, where she earned a bachelor's degree in physical education and lettered four years on the basketball team. She received her master's degree in physical education administration from Illinois State University in 1981.

Her previous coaching experience includes two years as head girls' volleyball coach at St. John's High School in Houston, TX, where she compiled a 51-11 record and led her 1980 squad to a Southwest Prep Conference title. Bittner also served three years as head girls' tennis coach and junior varsity girls' basketball coach.



Assistant Coach Sheng Gao

Sheng Gao returns for his fourth season as a Panther assistant after first becoming involved with the program as a graduate assistant in 1986.

Gao was an outstanding player in his native China, leading the University of Beijing to the 1979 collegiate national championship. He graduated from Beijing with a bachelor's degree in 1983 and then began teaching and coaching. He first came to UNI in 1984 and recently earned his master's degree in physical education.

Players



Katie Crowley #2

5-10, Senior, Setter
Springfield, IL/Sacred Heart Academy

CAREER HIGHS:

Kills - 6 vs. Iowa, 9/16/88
Assists - 45 vs. Southern Illinois, 11/5/88
Blocks - 6 vs. Western Illinois, 11/11/88
Aces - 5 vs. Minnesota, 10/5/88
Digs - 10 vs. Drake, 10/18/88

College: Has seen action in a reserve role the past two seasons after sharing the setting duties in '88...will be a

leading candidate for role as top setter this season....missed part of sophomore season due to injury...an excellent server who possesses great court sense...finished third in the Gateway Conference in ace average (0.46) and seventh in assist average (6.62) as a freshman in '88...redshirted her first year.

High School: Earned first team all-state honors as a senior in '86 along with first team all-city recognition as a junior and senior...captain of her high school team which made state tournament appearances three consecutive years...received the 1986 U.S. Army Reserve National Scholar/Athlete Award...participated in the USVBA Junior Nationals in '85 and '86...attended the Elite National Volleyball Camp in 1986 where she was a member of the Elite Team.

Personal: Born March 15, 1969...majoring in biology...enjoys biking, skiing and ice skating...daughter of Mike and Sharon Crowley.

Year	GP	K	E	ATT	PCT	AST	ACE	DIG	BS	BA
1988	112	63	20	143	.301	741	52	138	5	36
1989	30	11	6	32	.156	74	10	2	0	6
1990	63	9	6	29	.104	59	14	38	1	3
TOT	205	83	32	204	.250	874	76	205	6	45



Chris Less #6

6-0, Senior, Middle Hitter
Lone Tree, IA/Lone Tree H.S.

CAREER HIGHS:

Kills - 24 vs. Southwest Missouri, 11/17/90
Assists - 2, four times, last vs. Drake, 9/8/90
Blocks - 12 vs. Tulane, 9/30/88
Aces - 4 vs. Illinois at Chicago, 9/15/88
Digs - 7, twice, last vs. Illinois State, 11/16/90

College: Earned Second Team All-Gateway honors last season after leading the league in hitting

percentage, ranking third in blocks and ninth in kills...has ranked in the Gateway Conference top 10 in block average and hitting percentage each of her first three seasons...UNI's career leader in hitting percentage (.318) and block average (1.19)...led the team in block assists (141) last year while ranking second in kills and total blocks...an accurate hitter and strong blocker who figures to be one

of the top middle players in the conference in '91...on a pace to become UNI's all-time leader in all blocking categories...tallied double-figure kills in 19 of 33 matches last season and had five or more blocks 16 times.

High School: A great all-around athlete who received all-state recognition in four sports...a first team all-stater in volleyball and softball, state track qualifier in the high jump, 100- and 400-meter hurdles and pentathlon, and a member of the state champion shuttle hurdle relay team...played on the 1987 Iowa Junior Olympic team...letters won—volleyball (4), basketball (4), track (4) and softball (4).

Personal: Born December 29, 1969...majoring in speech pathology...daughter of Joseph and Patricia Less.

Year	GP	K	E	ATT	PCT	AST	ACE	DIG	BS	BA
1988	85	111	31	229	.349	10	12	43	15	70
1989	108	202	69	457	.291	9	2	39	14	118
1990	119	398	121	854	.324	6	11	69	13	141
TOT	312	711	221	1540	.318	25	25	151	42	329



Kristie Oleen #10

5-11, Senior, Outside Hitter
Blaine, MN/Blaine H.S.

CAREER HIGHS:

Kills - 20 vs. Western Illinois, 10/13/90
Assists - 5 vs. Southwest Missouri, 11/18/89
Blocks - 5 vs. Georgia, 11/30/90
Aces - 5 vs. Eastern Illinois, 11/10/90
Digs - 19 vs. William & Mary, 12/1/89

College: Started every match last season...finished sixth in the conference in ace average last season (0.41)...ranked second on the team in

digs and aces, finished third in kills...will be one of the keys to UNI's success this season...has been a major contributor to the Panthers'

attack since her freshman year, when she saw action in nearly half UNI's games...also competes on the women's track team, holding the school record in the discus.

High School: An honorable mention all-state performer as a senior after twice being named all-conference...team captain and MVP as a senior...a three-time all-stater in track and field...won the Minnesota state discus championship as a junior, setting a state record...letters won—volleyball (3), track (3) and basketball (1).

Personal: Born November 28, 1969...majoring in physical education...enjoys all sports...daughter of Glendon Oleen.

Year	GP	K	E	ATT	PCT	AST	ACE	DIG	BS	BA
1988	57	39	15	121	.198	10	7	37	1	14
1989	100	104	54	328	.152	37	15	142	8	54
1990	118	335	146	918	.206	20	48	298	7	47
TOT	275	478	215	1367	.192	67	70	477	16	115



Kris Schroeder #12

5-11, Senior, Outside Hitter
Dubuque, IA/Hempstead H.S.

CAREER HIGHS:

Kills - 21, three times, last vs. Iowa, 11/7/89
Assists - 3, five times, last vs. St. Louis, 9/22/89
Blocks - 10 vs. Minnesota, 10/1/87
Aces - 3, seven times, last vs. Indiana St., 11/10/89
Digs - 22 vs. Missouri, 9/16/89

College: Received a medical hardship last season after undergoing knee surgery prior to the start of the

season...enjoyed one of the outstanding seasons in school history as a junior until suffering a season-ending knee injury in the final regular-season match against Illinois State on 11/11/89...earned her third all-conference honor in as many seasons in '89 by being named Second Team All-Gateway...was voted Second Team Academic All-American for maintaining a 3.99 GPA in computer science...finished fourth in the conference in hitting percentage (.301) and kill average (3.78)...ranked second on the team in kill and dig average, and third in hitting percentage...averaged over four kills per game in league

play while hitting .322...with another healthy season, she could move near the top in all-time kills, kill average and attempts...she already is third on the career hitting percentage list...placed sixth in the conference in hitting percentage as a sophomore...was named Gateway Co-Newcomer of the Year in 1987 after playing in every game and placing fourth in the conference in hitting percentage...a three-year letterwinner who had missed just three games in three years prior to her injury in 1989.

High School: A second team all-state and first team All-Mississippi Valley selection for the Mustangs as a senior...letters won—volleyball (2), basketball (2), softball (4).

Personal: Born October 26, 1968...majoring in computer science...an exceptional student who has maintained a 3.99 GPA and was Second Team Academic All-American in 1989...likes to ski and bike in her spare time...daughter of Aloysius and Norma Schroeder.

Year	GP	K	E	ATT	PCT	AST	ACE	DIG	BS	BA
1987	138	195	56	460	.302	21	45	262	16	89
1988	114	209	68	511	.276	21	20	164	7	66
1989	83	314	91	740	.301	14	22	211	8	29
TOT	335	718	215	1711	.294	56	87	637	31	184



Jennifer Becker #5

5-9, Junior, Back Row
Dike, IA/Dike H.S.

CAREER HIGHS:

Kills - none
Assists - 2, twice, last vs. Iowa, 11/6/90
Blocks - none
Aces - 4 vs. St. Louis, 9/21/90
Digs - 23 vs. Iowa, 11/6/90

College: Became a key back row player last season, earning her first letter after appearing in all 33

matches...finished fifth on the team in digs, averaging 2.12 per game...acknowledged as one of UNI's most dependable servers...earned her way onto the team as a freshman walk-on in

1989 and played in 19 games.

High School: An outstanding all-around athlete who lettered in five sports for the Bobcats...a member of four state championship volleyball teams and two state championship basketball teams...state qualifier in tennis...first team all-conference and special mention all-state twice in volleyball...letters won—volleyball (4), softball (3), track (2), tennis (2) and basketball (1).

Personal: Born July 17, 1971...majoring in biology...enjoys playing tennis, skiing and playing the piano...daughter of Joe and Connie Becker.

Year	GP	K	E	ATT	PCT	AST	ACE	DIG	BS	BA
1989	19	0	0	1	.000	2	2	18	0	0
1990	118	0	1	8	-.125	7	26	251	0	0
TOT	137	0	1	9	-.111	9	28	269	0	0



Stacy Makoben #13

6-2, Junior, Outside Hitter
Stockton, IA/Durant H.S.

CAREER HIGHS:

Kills - 16, twice, last vs. Iowa, 11/6/90
Assists - 3 vs. Iowa State, 10/31/89
Blocks - 8 vs. Illinois State, 11/11/89
Aces - 4 vs. St. Ambrose, 9/19/89
Digs - 10 vs. Illinois State, 10/27/90

College: After a promising freshman season, she became a force to be reckoned with as a sophomore ...

recorded double figures in kills 11 times last season including matches against Iowa, Minnesota, Southwest Missouri, Illinois State and Iowa State...averaged 2.53 kills per game while hitting .223 in conference play...noted for her good mobility and quick arm.

High School: Named to the all-state first team as a senior, finishing

second in the Class 1A Player of the Year voting...a three-time all-conference pick who also earned all-state honors twice...named to the 1988 Eastern Iowa All-Star Team...member of the Durant basketball team that finished second in the state tournament her senior year...an all-conference performer in basketball and softball...earned letters in volleyball, basketball, softball and track.

Personal: Born November 4, 1970...majoring in criminology...daughter of Leon and Linda Makoben.

Year	GP	K	E	ATT	PCT	AST	ACE	DIG	BS	BA
1989	55	72	39	200	.165	7	6	50	1	22
1990	117	268	113	736	.211	9	6	144	8	59
TOT	172	340	152	936	.201	16	12	194	9	81



Dawn Meester #9

5-8, Junior, Back Row
Dike, IA/Dike H.S.

CAREER HIGHS:

Kills - 4 vs. St. Ambrose, 9/18/90
Assists - 2, twice, last vs. Bradley, 10/12/90
Blocks - none
Aces - 12 vs. St. Ambrose, 9/18/90
Digs - 13, four times, last vs. Illinois State, 11/16/90

College: Ranked 10th in the nation last season in service aces (0.71)...set a UNI single-season record for aces

(86)...recorded a UNI record 12 aces in 9/18/90 match vs. St. Ambrose...became an instant contributor in the back row as a freshman...tallied five or more aces in eight matches last season with her jump-serve that has become a potent offensive weapon for the Panthers...was the only Panther to see action in all 121 games last season...was fourth on the team in digs last year with a 2.09 average...ranked third on the team in aces (33) and sixth in digs (150) as a freshman.

High School: Voted Iowa High School Player of the Year in Class 1A as a senior after leading the Bobcats to their fourth consecutive state championship...captain of her team and the state all-tournament team...earned all-state and all-conference honors three seasons...played on the Mizuno All-Star team in 1988 and the Iowa Junior Olympic Team in '88 and '89...a three-time member of the USVBA Mid-America team...qualified for the state track meet twice in the discus and long jump...a two-time all-state selection in basketball and all-conference in softball...letters won—volleyball (3), basketball (3), track (4), softball (4) and tennis (1).

Personal: Born April 4, 1971...majoring in food & nutrition...hobbies include racquetball, tennis and swimming...daughter of Al and Shirley Meester.

Year	GP	K	E	ATT	PCT	AST	ACE	DIG	BS	BA
1989	97	2	2	7	.000	1	33	150	0	0
1990	12	4	1	14	.214	8	86	253	0	0
TOT	218	6	3	21	.143	9	119	403	0	0



Danice Niemeyer #3

5-7, Junior, Back Row
Sumner, IA/Sumner H.S.

CAREER HIGHS:

Digs - 3 vs. St. Ambrose, 9/18/90

College: Earned a spot on the team last year as a walk-on and played in 12 games, providing solid back row

play...expected to be a top contributor again this season.

High School: A second team all-state basketball selection as a senior after being named honorable mention as a sophomore and junior...a three-time state track qualifier in the mile run...earned honorable mention all-state honors in softball as a junior and senior...letters won—basketball (4), track and field (4) and softball (4).

Personal: Born January 26, 1968...majoring in physical education...enjoys playing tennis and spending time with friends in her spare time...daughter of Orville and Elviera Niemeyer.

Year	GP	K	E	ATT	PCT	AST	ACE	DIG	BS	BA
1990	12	0	0	0	.000	2	0	8	0	0



Tricia Mills #8

6-0, Sophomore, Outside Hitter
Iowa Falls, IA/Iowa Falls H.S.

CAREER HIGHS:

Kills - 7, three times, last vs. Akron, 11/29/90
Assists - 6 vs. Akron, 11/29/90
Blocks - 8 vs. Georgia, 11/30/90
Aces - 2 vs. Wichita State, 11/2/90
Digs - 21 vs. Illinois State, 10/27/90

College: Started nearly every match last year as a freshman, playing in all 33 and 105 games...instantly became

one of the Gateway's top blockers, ranking in the top 10 most of the season...ranked third on the team in total blocks and block assists.

High School: Earned first team all-state honors last season while leading the Cadets to the state tournament, where she was named to the all-tournament team...averaged 4.01 kills, 1.71 blocks and 3.37 digs per game as a senior while posting a .395 hitting percentage...a four-time all-conference selection and member of Iowa's 16 & Under and 18 & Under Junior Olympic Teams...played in the East/West All-Star Game as a junior and senior...also a first team all-conference and honorable mention all-state selection in basketball...letters won—volleyball (4) and basketball (4).

Personal: Born September 14, 1971...majoring in communications...likes to bike in her spare time...daughter of Pat and Lois Mills.

Year	GP	K	E	ATT	PCT	AST	ACE	DIG	BS	BA
1990	105	101	50	311	.164	33	9	176	6	93



Julie Siegler #4

5-10, Sophomore, Outside Hitter
Burlington, WI/Westosha Central H.S.

CAREER HIGHS:

Kills - 5 vs. St. Ambrose, 9/18/90
Assists - 3 vs. Iowa, 11/6/90
Blocks - 4, three times, last vs. Boise State,
11/29/90
Aces - 5 vs. Iowa State, 10/21/90
Digs - 10, twice, last vs. Boise State, 11/29/90

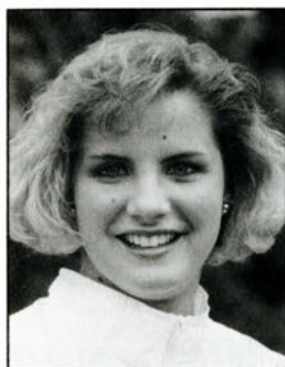
College: Became an immediate contributor last season, playing in 26

of 33 matches...enjoyed her finest match against Wichita State (11/2/90), recording four kills, six digs and four blocks...served five aces versus Iowa State (10/21/90).

High School: Led her team to the 1989 Class "A" Wisconsin state championship while earning first team all-state honors...earned first team all-conference and all-area honors as a junior and senior...named co-captain and MVP of her team her senior year...letters won—volleyball (3), basketball (3) and softball (2).

Personal: Born December 30, 1971...major is undecided...daughter of Erwin and Sheila Siegler.

Year	GP	K	E	ATT	PCT	AST	ACE	DIG	BS	BA
1990	53	30	22	109	.073	6	11	83	4	22



Dionne Pettit #1

5-8, Freshman, Setter
Dubuque, IA/Wahlert H.S.

College: Redshirted her first season and will battle for job as top setter this year.

High School: A second team all-stater who averaged 8.93 assists per game as a senior for the Golden Eagles...earned selection to the state all-tournament

team as Wahlert finished second...an IGHSAU and IACA/Mizuno All-Star...selected to the All-Mississippi Valley First Team as a senior and a member of the Mid-America Junior USVBA team...led the state with a school-record 893 assists.

Personal: Born September 23, 1971...majoring in speech pathology...daughter of Don & Alice Pettit.



Natalie Walters #14

5-10, Freshman, Outside Hitter
Waterloo, IA/East H.S.

College: Redshirted last year.

High School: A four-year letterwinner for the Trojans who missed part of her senior season due to a knee injury...earned first team All-Metro and All-Big Eight honors as a junior...played in the East/West All-Star

Game and the Iowa Junior Olympics as a junior...competed on the Mid-America Junior USVBA team in 1990...letters won—volleyball (4), softball (2) and tennis (2).

Personal: Born February 8, 1972...majoring in physical education...hobbies include shopping and working out...daughter of Bruce and Carol Walters.



Carrie Shurr #11

6-0, Freshman, Middle Hitter
Iowa City, IA/City H.S.

High School: A volleyball all-stater and two-time first team All-Mississippi Valley selection for the Little Hawks...a basketball all-stater and three-time all-conference pick...also earned all-state track honors...letters won—volleyball (2), basketball (3) and track (3).

Personal: Born August 5, 1973...plans to major in accounting...daughter of Don & Marilyn Shurr.

1991 Northern Iowa Roster

Numerical

No.	Name	Ht.	Yr.	Position	Hometown/High School
1	Dionne Pettit	5-8	Fr.	Setter	Dubuque, IA/Wahlert
2	Katie Crowley**	5-10	Sr.	Setter	Springfield, IL/Sacred Heart Academy
3	Danice Niemeyer	5-7	Jr.	Back Row	Sumner, IA/Sumner
4	Julie Siegler*	5-10	So.	Outside Hitter	Burlington, WI/Westosha Central
5	Jennifer Becker*	5-9	Jr.	Back Row	Dike, IA/Dike
6	Chris Less***	6-0	Sr.	Middle Hitter	Lone Tree, IA/Lone Tree
8	Tricia Mills*	6-0	So.	Outside Hitter	Iowa Falls, IA/Iowa Falls
9	Dawn Meester**	5-8	Jr.	Back Row	Dike, IA/Dike
10	Kristie Oleen***	5-11	Sr.	Outside Hitter	Blaine, MN/Blaine
11	Carrie Shurr	6-0	Fr.	Middle Hitter	Iowa City, IA/City
12	Kris Schroeder***	5-11	Sr.	Outside Hitter	Dubuque, IA/Hempstead
13	Stacy Makoben**	6-2	Jr.	Middle Hitter	Stockton, IA/Durant
14	Natalie Walters	5-10	Fr.	Outside Hitter	Waterloo, IA/East

Alphabetical

No.	Name	Ht.	Yr.	Position	Hometown/High School
5	Jennifer Becker*	5-9	Jr.	Back Row	Dike, IA/Dike
2	Katie Crowley**	5-10	Sr.	Setter	Springfield, IL/Sacred Heart Academy
6	Chris Less***	6-0	Sr.	Middle Hitter	Lone Tree, IA/Lone Tree
13	Stacy Makoben**	6-2	Jr.	Middle Hitter	Stockton, IA/Durant
9	Dawn Meester**	5-8	Jr.	Back Row	Dike, IA/Dike
8	Tricia Mills	6-0	So.	Outside Hitter	Iowa Falls, IA/Iowa Falls
3	Danice Niemeyer	5-7	Jr.	Back Row	Sumner, IA/Sumner
10	Kristie Oleen***	5-11	Sr.	Outside Hitter	Blaine, MN/Blaine
1	Dionne Pettit	5-8	Fr.	Setter	Dubuque, IA/Wahlert
12	Kris Schroeder***	5-11	Sr.	Outside Hitter	Dubuque, IA/Hempstead
11	Carrie Shurr	6-0	Fr.	Middle Hitter	Iowa City, IA/City
4	Julie Siegler*	5-10	So.	Outside Hitter	Burlington, WI/Westosha Central
14	Natalie Walters	5-10	Fr.	Outside Hitter	Waterloo, IA/East

HEAD COACH: Iradge Ahrabi-Fard
ASSISTANT COACHES: Jan Bittner, Sheng Gao

* Denotes letters earned

Pronunciations

CrowleyCROW-lee; CROW rhymes with now
Makoben.....Mu-KO-ben
OleenO-LEEN
Schroeder.....SHRAY-der
ShurrSURE
SieglerSEEG-ler
Iradge Ahrabi-FardE-RODJ A-ROB-ee FARD
Sheng Gao.....Shen Gow

Breakdown by Class

Seniors.....4 Sophomores.....2
Juniors.....4 Freshmen.....3



1990 Final Statistics

CUMULATIVE Volleyball Statistics — Northern Iowa 1990 (Includes 33 Matches)

PLAYER	MP/GP	-----ATTACK-----					-----SETTING-----			-----SERVING-----				-----DEFENSIVE-----					
		ATT	KILL	AVG	E	ATTCK PCT	AST	AVG	AST PCT	ACE	AVG	SE	RE	DIG	AVG	BS	BA	BLK AVG	BE
Bobbie Kreple	33/119	314	122	1.0	33	.283	1297	10.9	.000	41	.4	33	0	311	2.6	8	63	.6	18
Katie Crowley	26/ 63	29	9	.1	6	.104	59	.9	.000	14	.2	16	2	38	.6	1	3	.1	0
Danice Niemeyer	10/ 12	0	0	.0	0	.000	2	.2	.000	0	.0	1	0	8	.7	0	0	.0	0
Julie Siegler	26/ 53	109	30	.6	22	.073	6	.1	.000	11	.2	15	6	83	1.6	4	22	.5	0
Jennifer Becker	33/118	8	0	.0	1	-.125	7	.1	.000	26	.2	22	16	251	2.1	0	0	.0	0
Chris Less	33/119	854	398	3.4	121	.324	6	.1	.000	11	.1	4	6	69	.6	13	141	1.3	26
Tricia Mills	33/105	311	101	1.	50	.164	33	.3	.000	9	.1	15	12	176	1.7	6	93	.9	12
Dawn Meester	33/121	14	4	.0	1	.214	8	.1	.000	86	.7	81	24	253	2.1	0	0	.0	0
Kristie Oleen	33/118	918	335	2.8	146	.206	20	.2	.000	48	.4	68	38	298	2.5	7	47	.5	14
Denise Cuttall	33/120	1135	497	4.1	153	.303	23	.2	.000	22	.2	39	39	255	2.1	25	137	1.4	12
Stacy Makoben	33/117	736	268	2.3	113	.211	9	.1	.000	6	.1	19	17	144	1.2	8	59	.6	5
Team Reception Errors														0					
UNI	33/121	4428	1764	14.6	646	.253	1470	12.2	.000	274	2.3	313	160	1886	15.6	72	565	5.3	87
Team Reception Errors														2					
Opponent Totals	33/121	4556	1371	11.3	756	.135	1205	10.	.000	160	1.3	253	274	1764	14.6	83	301	3.2	73

OVERALL TEAM RECORD	28-5	CUMULATIVE ATTENDANCE	18670	TOTAL AVERAGE ATTENDANCE	566
IN-SEASON TOURN. RECORD	10-4	HOME	13079	HOME AVERAGE	872
GATEWAY	9-0	AWAY	5591	AWAY AVERAGE	311

GAME#	DATE	OPPONENT	LOC	ATTEND	RESULT	GAME SCORES				TOURNAMENT	
1	9/ 1	Montana State	H	365	W 3-0	15- 4	15-10	15- 6		UNI Invitational	
2	9/ 2	Illinois at Chicago	H	115	W 3-0	16-14	15- 6	15- 6		UNI Invitational	
3	9/ 2	Northwestern	H	388	W 3-0	15-11	15- 1	15- 6		UNI Invitational	
4	9/ 8	Drake	N	250	W 3-0	15- 3	15- 9	15- 8		All-Iowa Classic	
5	9/ 9	Iowa State	A	1456	W 3-2	12-15	14-16	15- 4	15- 6	15- 5	All-Iowa Classic
6	9/14	U.S. International	N	100	W 3-0	15- 5	15- 3	15- 5			Anteater Invite
7	9/15	San Diego	N	100	W 3-0	15- 9	15-10	15- 7			Anteater Invite
8	9/15	Cal-Irvine	A	132	W 3-2	7-15	15- 8	15- 6	10-15	15- 4	Anteater Invite
9	9/18	St. Ambrose	H	610	W 3-1	15- 3	13-15	15- 3	15- 0		
10	9/21	St. Louis	H	487	W 3-0	15-11	15- 1	15- 3			
11	9/22	Wisconsin-Milwaukee	H	624	W 3-0	15- 2	15- 8	15- 7			
12	9/25	Winona State	H	892	W 3-1	15- 2	14-16	15- 9	15- 1		
13	9/28	DePaul	A	100	W 3-0	15-13	15- 9	15- 2			
14	9/29	Loyola (IL)	A	100	W 3-1	15- 8	12-15	15- 1	15-11		
15	9/30	Memphis State	N	150	L 2-3	15-11	15- 5	14-16	5-15	12-15	
16	10/ 8	Minnesota	A	466	W 3-0	15-10	15- 6	15-12			
17	10/12	*Bradley	H	909	W 3-0	15- 8	15-12	15- 2			
18	10/13	*Western Illinois	H	885	W 3-1	15- 6	15- 7	10-15	15- 7		
19	10/16	*Drake	H	670	W 3-0	15-11	15- 2	15-10			
20	10/21	Iowa State	H	1630	W 3-1	11-15	15- 6	15- 6	15- 4		
21	10/26	*Indiana State	A	100	W 3-0	15-13	15- 2	15- 5			
22	10/27	*Illinois State	A	973	W 3-2	10-15	15- 6	15- 7	13-15	16-14	
23	11/ 2	*Wichita State	H	1368	W 3-1	12-15	15-10	15- 8	15-11		
24	11/ 3	*Southwest Missouri	H	1579	W 3-1	5-15	15- 2	15- 9	15-11		
25	11/ 6	Iowa	A	686	W 3-2	6-15	13-15	15- 7	15- 3	15-10	
26	11/ 9	*Southern Illinois	A	668	W 3-0	15-10	15- 6	16-14			
27	11/10	*Eastern Illinois	A	70	W 3-0	15- 4	15- 8	15- 7			
28	11/16	Illinois State	H	1395	W 3-0	16-14	15- 4	15- 5			Gateway Tournament
29	11/17	Southwest Missouri	H	1162	L 1-3	13-15	15-11	13-15	10-15		Gateway Tournament
30	11/29	Akron	H	40	W 3-0	15-10	15-10	15- 8			W.I.V.C.
31	11/29	Boise State	N	50	L 2-3	15-10	15- 7	14-16	10-15	12-15	W.I.V.C.
32	11/30	Arkansas State	N	50	L 1-3	15- 8	7-15	11-15	7-15		W.I.V.C.
33	11/30	Georgia	N	100	L 1-3	15- 7	8-15	15-17	12-15		W.I.V.C.

*Gateway

UNI Record Book

Individual Records (Since 1983)

Career

Season

Match

Kills

1. Bobbi Becker (86-89).....	1,611
2. Maryellen McCann (84-87).....	1,122
3. Lisa Meeker (83-86).....	1,111
4. Denise Cuttall (87-90).....	1,017
5. Sylvia Eder (83-85).....	895
6. Jill Sprague (85-88).....	807
7. Kari Warren (85-88).....	723
8. Kris Schroeder (87-).....	718
9. Chris Less (88-).....	711
10. Mary Bernhardt (84-87).....	655

Kills Per Game

(min. 600 attempts)

1. Bobbi Becker (86-89).....	3.41
2. Maryellen McCann (84-87).....	2.87
3. Sylvia Eder (83-85).....	2.66
4. Jill Sprague (85-88).....	2.523
5. Lisa Meeker (83-86).....	2.519
6. Chris Less (88-).....	2.28
7. Kris Schroeder (87-).....	2.14
8. Denise Cuttall (87-90).....	2.13
9. Shawna Hutchins (85-88).....	1.92
10. Kristie Olen (88-).....	1.74

Total Attempts

1. Bobbi Becker (86-89).....	3,756
2. Maryellen McCann (84-87).....	2,950
3. Lisa Meeker (83-86).....	2,812
4. Denise Cuttall (87-90).....	2,409
5. Sylvia Eder (83-85).....	2,138
6. Kari Warren (83-86).....	1,968
7. Jill Sprague (85-88).....	1,830
8. Kris Schroeder (87-).....	1,711
9. Chris Less (88-).....	1,540
10. Shawna Hutchins (85-88).....	1,535

Hitting Percentage

(min. 600 attempts)

1. Chris Less (88-).....	.318
2. Jill Sprague (85-88).....	.306
3. Kris Schroeder (87-).....	.294
4. Bobbi Becker (86-89).....	.286
5. Denise Cuttall (87-90).....	.283
6. Sylvia Eder (83-85).....	.254
7. Maryellen McCann (84-87).....	.253
8. Mary Bernhardt (84-87).....	.245
9. Lisa Meeker (83-86).....	.242
10. Shawna Hutchins (85-88).....	.236

Assists

1. Mary Bernhardt (84-87).....	3,977
2. Bobbie Kreple (87-90).....	2,780
3. Katie Crowley (88-).....	874
4. Maryellen McCann (84-87).....	176
5. Sandy Jensen (84).....	171
6. Bobbi Becker (86-89).....	132
7. Lisa Meeker (83-86).....	100
8. Kari Warren (83-86).....	88
9. Jill Sprague (85-88).....	83
10. Shawna Hutchins (85-88).....	75

Service Aces

1. Bobbi Becker (86-89).....	234
2. Kari Warren (83-86).....	183
3. Mary Bernhardt (84-87).....	169
4. Sylvia Eder (83-85).....	166
5. Maryellen McCann (84-87).....	146
6. Bobbie Kreple (87-90).....	143
7. Jill Sprague (85-88).....	141
8. Dawn Meester (89-).....	119
9. Denise Cuttall (87-90).....	103
10. Lisa Meeker (83-86).....	95

Kills

1. Bobbi Becker ('89).....	534
2. Denise Cuttall ('90).....	497
3. Maryellen McCann ('87).....	494
4. Bobbi Becker ('87).....	416
5. Chris Less ('90).....	398
6. Sylvia Eder ('85).....	395
Shawna Hutchins ('87).....	395
8. Bobbi Becker ('88).....	385
9. Lisa Meeker ('86).....	382
10. Lisa Meeker ('85).....	346

Kills Per Game

(min. 300 attempts)

1. Bobbi Becker ('89).....	4.90
2. Denise Cuttall ('90).....	4.14
3. Maryellen McCann ('87).....	3.92
4. Sylvia Eder ('85).....	3.79
5. Kris Schroeder ('89).....	3.78
6. Lisa Meeker ('86).....	3.50
7. Chris Less ('90).....	3.34
8. Lisa Meeker ('85).....	3.32
9. Bobbi Becker ('88).....	3.29
10. Shawna Hutchins ('87).....	2.86

Total Attempts

1. Bobbi Becker ('89).....	1,195
2. Denise Cuttall ('90).....	1,135
3. Maryellen McCann ('87).....	1,117
4. Bobbi Becker ('87).....	1,003
5. Shawna Hutchins ('87).....	981
6. Kristie Olen ('90).....	918
7. Bobbi Becker ('88).....	913
8. Sylvia Eder ('85).....	888
9. Chris Less ('90).....	854
10. Lisa Meeker ('86).....	838

Hitting Percentage

(min. 300 attempts)

1. Maryellen McCann ('86).....	.352
2. Jill Sprague ('86).....	.346
3. Lisa Meeker ('86).....	.340
4. Sylvia Eder ('85).....	.332
5. Mary Bernhardt ('87).....	.326
6. Chris Less ('90).....	.324
7. Maryellen McCann ('87).....	.3151
8. Bobbi Becker ('89).....	.3146
9. Jill Sprague ('85).....	.313
10. Denise Cuttall ('89).....	.303
Denise Cuttall ('90).....	.303

Assists

1. Bobbie Kreple ('90).....	1,297
2. Mary Bernhardt ('87).....	1,249
3. Mary Bernhardt ('86).....	1,089
4. Bobbie Kreple ('89).....	1,080
5. Mary Bernhardt ('85).....	987
6. Katie Crowley ('88).....	741
7. Mary Bernhardt ('84).....	652
8. Bobbie Kreple ('88).....	326
9. Sandy Jensen ('84).....	171
10. Maryellen McCann ('87).....	84

Service Aces

1. Dawn Meester ('90).....	86
2. Sylvia Eder ('84).....	83
3. Maryellen McCann ('86).....	73
4. Bobbi Becker ('88).....	66
5. Bobbi Becker ('89).....	65
6. Jill Sprague ('85).....	60
7. Mary Bernhardt ('87).....	59
Kari Warren ('83).....	59
Bobbi Becker ('87).....	59
10. Katie Crowley ('88).....	52
Maryellen McCann ('87).....	52

Kills

1. Bobbi Becker.....	40
(vs. Illinois St., 11/11/89)	
2. Bobbi Becker.....	35
(vs. SW Missouri, 11/18/89)	
3. Maryellen McCann.....	34
(vs. Iowa, 11/3/87)	
4. Denise Cuttall.....	33
(vs. Iowa, 11/6/90)	
5. Maryellen McCann.....	29
(vs. W. Illinois, 9/25/87)	

Total Attempts

1. Bobbi Becker.....	88
(vs. Illinois St., 11/11/89)	
2. Bobbi Becker.....	86
(vs. SW Missouri, 11/18/89)	
3. Denise Cuttall.....	72
(vs. Iowa, 11/6/90)	
4. Maryellen McCann.....	66
(vs. Ill.-Chicago, 9/19/87)	
Denise Cuttall.....	66
(vs. Illinois St., 10/27/90)	

Hitting Percentage

(min. 10 attempts)

1. Jill Sprague.....	.818
(vs. Valparaiso, 9/5/87)	
Maryellen McCann.....	.818
(vs. NW Missouri St., 9/26/86)	
3. Jill Sprague.....	.764
(vs. Winona St., 9/30/86)	
4. Jill Sprague.....	.750
(vs. W. Illinois, 11/15/86)	
5. Jill Sprague.....	.737
(vs. Bradley, 11/12/88)	

Assists

1. Mary Bernhardt.....	72
(vs. W. Illinois, 9/25/87)	
2. Mary Bernhardt.....	67
(vs. So. Illinois, 10/18/85)	
3. Bobbie Kreple.....	66
(vs. Western Illinois, 10/13/90)	
4. Bobbie Kreple.....	65
(vs. Illinois St., 10/27/90)	
5. Mary Bernhardt.....	64
(vs. SW Missouri, 11/22/86)	

Service Aces

1. Dawn Meester.....	12
(vs. St. Ambrose, 9/18/90)	
2. Bobbi Becker.....	8
(vs. Illinois St., 11/11/89)	
Donna Boehmer.....	8
(vs. NE Missouri St., 9/10/83)	
4. Donna Boehmer.....	7
(vs. NE Missouri St., 9/30/83)	
Sylvia Eder.....	7
(vs. Ill.-Chicago, 11/2/84;	
vs. W. Illinois, 9/28/84;	
vs. Iowa St., 9/11/84)	
Mary Bernhardt.....	7
(vs. W. Illinois, 10/5/85)	

Career

Digs

1. Bobbi Becker (86-89).....	1,457
2. Mary Bernhardt (84-87)	1,202
3. Kari Warren (83-86).....	913
4. Lisa Meeker (83-86).....	874
5. Bobbie Kreple (87-90).....	850
6. Maryellen McCann (84-87).....	754
7. Denise Cuttall (87-90).....	752
8. Sylvia Eder (83-85).....	678
9. Kris Schroeder (87-)	637
10. Jill Sprague (85-88).....	584

Block Solos

1. Denise Cuttall (87-90).....	90
2. Kari Warren (83-86).....	83
3. Lisa Meeker (83-86).....	74
4. Jill Sprague (85-88).....	71
5. Mary Bernhardt (84-87).....	67
6. Maryellen McCann (84-87).....	57
7. Michelle Schaab (83).....	48
8. Bobbi Becker (86-89).....	46
9. Chris Less (88-)	42
10. Sylvia Eder (83-85).....	36

Block Assists

1. Denise Cuttall (87-90).....	407
2. Chris Less (88-)	329
3. Kari Warren (83-86).....	305
4. Jill Sprague (85-88).....	256
5. Mary Bernhardt (84-87).....	237
6. Lisa Meeker (83-86).....	214
7. Sylvia Eder (83-85).....	196
8. Kris Schroeder (87-)	184
Maryellen McCann (84-87).....	184
10. Bobbi Becker (86-89).....	169

Total Blocks

1. Denise Cuttall (87-90).....	497
2. Kari Warren (83-86).....	388
3. Chris Less (88-)	371
4. Jill Sprague (85-88).....	327
5. Mary Bernhardt (84-87).....	304
6. Lisa Meeker (83-86).....	288
7. Maryellen McCann (84-87).....	241
8. Sylvia Eder (83-85).....	232
9. Kris Schroeder (87-)	215
Bobbi Becker (86-89).....	215

Blocks Per Game

(min. 180 games)

1. Chris Less (88-)	1.19
2. Denise Cuttall (87-90).....	1.04
3. Jill Sprague (85-88).....	1.02
4. Kari Warren (83-86).....	0.93
5. Sylvia Eder (83-85).....	0.69
6. Mary Bernhardt (84-87).....	0.66
7. Lisa Meeker (83-86).....	0.65
8. Kris Schroeder (87-)	0.64
9. Maryellen McCann (84-87).....	0.57
10. Kristie Oleen (88-)	0.48

Games Played

1. Denise Cuttall (87-90).....	478
2. Bobbi Becker (86-89).....	473
3. Mary Bernhardt (84-87).....	464
4. Lisa Meeker (83-86).....	441
5. Maryellen McCann (84-87).....	426
6. Kari Warren (83-86).....	418
7. Sylvia Eder (83-85).....	336
8. Kris Schroeder (87-)	335
9. Jill Sprague (85-88).....	321
10. Chris Less (88-)	312

Season

Digs

1. Bobbi Becker ('87).....	471
2. Mary Bernhardt ('87).....	433
3. Bobbi Becker ('89).....	374
4. Maryellen McCann ('87).....	361
5. Bobbi Becker ('88).....	345
6. Lauren Lawrence ('87).....	335
7. Mary Bernhardt ('86).....	316
8. Lisa Meeker ('86).....	312
9. Bobbie Kreple ('90).....	311
10. Kristie Oleen ('90)	298

Block Solos

1. Michelle Schaab ('83).....	48
2. Kari Warren ('86).....	35
3. Jane Witt ('83).....	30
4. Lisa Meeker ('86).....	29
5. Denise Cuttall ('87).....	27
Maryellen McCann ('86).....	27
Jill Sprague ('88).....	27
8. Mary Bernhardt ('86).....	25
Denise Cuttall ('90).....	25
10. Lisa Meeker ('84).....	23

Block Assists

1. Jane Witt ('83).....	150
2. Chris Less ('90)	141
3. Denise Cuttall ('90).....	137
4. Sylvia Eder ('83).....	119
5. Chris Less ('89)	118
6. Kari Warren ('84).....	97
7. Denise Cuttall ('89).....	93
Denise Cuttall ('87).....	93
Kari Warren ('83).....	93
10. Jill Sprague ('85).....	92

Total Blocks

1. Jane Witt ('83).....	180
2. Denise Cuttall ('90).....	162
3. Chris Less ('90)	154
4. Sylvia Eder ('83).....	137
5. Chris Less ('89)	132
6. Michelle Schaab ('83).....	131
7. Denise Cuttall ('87).....	120
8. Kari Warren ('84).....	116
9. Denise Cuttall ('89).....	114
Jill Sprague ('85).....	114

Match

Digs

1. Mary Bernhardt.....	39
(vs. Washington St., 9/11/87)	
2. Bobbi Becker.....	30
(vs. William & Mary, 12/1/89)	
Maryellen McCann.....	30
(vs. W. Illinois, 9/25/87)	
4. Bobbi Becker.....	28
(vs. Ball State, 10/8/88)	
Mary Bernhardt.....	28
(vs. Iowa, 11/6/84)	

Block Solos

1. Kari Warren.....	8
(vs. Iowa St., 11/4/86)	
2. Maryellen McCann.....	7
(vs. Southwest Missouri, 11/22/86)	
3. Michelle Schaab.....	6
(vs. Bradley, 10/22/83;	
vs. Loras, 9/27/83)	
4. Sylvia Eder.....	5
(vs. Bradley, 10/22/83)	
Lisa Meeker.....	5
(vs. W. Illinois, 11/15/86)	

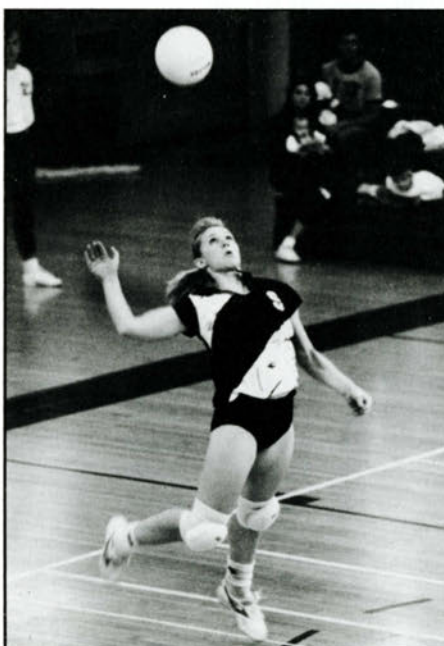
Block Assists

1. Kari Warren.....	15
(vs. So. Illinois, 10/18/85)	
2. Denise Cuttall.....	11
(vs. Illinois St., 11/11/89)	
Shawna Hutchins.....	11
(vs. E. Michigan, 9/14/85)	
4. Several tied with 10	

Total Blocks

1. Kari Warren.....	17
(vs. So. Illinois, 10/18/85)	
2. Chris Less.....	12
(vs. Tulane, 9/30/88)	
3. Several tied with 11.	

Note: Assists were not kept until 1984.



Junior Dawn Meester set the UNI record for aces in a season in 1990.

Team Records

Season

Matches	41	1983
Games	138	1987
Wins	34	1987
Losses	20	1983
Winning Percentage	.909	1986
Winning Streak	14	9/1/90 to 9/29/90
Losing Streak	7	9/13/83 to 9/23/93
Home Winning Streak	32	10/18/85 to 9/27/87
Kills	1,937	1987
Total Attempts	4,545	1987
Hitting Percentage	.324	1986
Service Aces	326	1987
Block Solos	157	1986
Block Assists	565	1990
Team Blocks	354	1990
Digs	2,462	1987
Assists	1,577	1987

Match

Kills	94	vs. Western Illinois, 9/25/87
Total Attempts	260	vs. Illinois State, 10/27/90
Hitting Percentage	.548	vs. Virginia Commonwealth, 10/10/87
Service Aces	19	vs. St. Ambrose, 9/18/90
Block Solos	17	vs. Bradley, 10/22/83;
		vs. Iowa State, 11/4/86
Block Assists	42	vs. Southern Illinois, 10/18/85
Team Blocks	28	vs. Southern Illinois, 10/18/85
Digs	125	vs. Washington State, 9/11/87
Assists	88	vs. Western Illinois, 9/25/87

Yearly Individual Leaders

Kills

1983	Michelle Schaab	305
1984	Sylvia Eder	251
1985	Sylvia Eder	395
1986	Lisa Meeker	382
1987	Maryellen McCann	494
1988	Bobbi Becker	385
1989	Bobbi Becker	534
1990	Denise Cuttall	497

Assists

1984	Mary Bernhardt	652
1985	Mary Bernhardt	987
1986	Mary Bernhardt	1,089
1987	Mary Bernhardt	1,249
1988	Katie Crowley	741
1989	Bobbie Kreple	1,080
1990	Bobbie Kreple	1,297

Service Aces

1983	Kari Warren	59
1984	Sylvia Eder	83
1985	Jill Sprague	60
1986	Maryellen McCann	73
1987	Mary Bernhardt	59
	Bobbi Becker	59
1988	Bobbi Becker	66
1989	Bobbi Becker	65
1990	Dawn Meester	86

Hitting Percentage

1983	Sylvia Eder	.202
1984	Kari Warren	.211
1985	Sylvia Eder	.332
1986	Maryellen McCann	.352
1987	Mary Bernhardt	.326
1988	Bobbi Becker	.277
1989	Bobbi Becker	.315
1990	Chris Less	.324

Digs

1983	Amy Dall	297
1984	Mary Bernhardt	232
1985	Lisa Meeker	300
1986	Mary Bernhardt	316
1987	Bobbi Becker	471
1988	Bobbi Becker	345
1989	Bobbi Becker	374
1990	Bobbie Kreple	311

Total Blocks

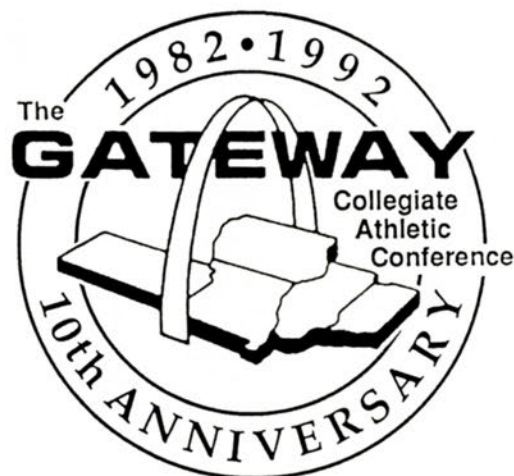
1983	Jane Witt	180
1984	Kari Warren	116
1985	Jill Sprague	114
1986	Jill Sprague	102
1987	Denise Cuttall	120
1988	Jill Sprague	102
1989	Chris Less	132
1990	Denise Cuttall	162

1990 Final Gateway Conference Standings

Team	Gateway	Pct.	Overall	Pct.	Games W-L
Northern Iowa*	9-0	1.000	28-5	.848	91-30
Southwest Missouri#	7-2	.778	24-8	.750	79-37
Western Illinois	6-3	.667	21-9	.700	69-48
Illinois State	6-3	.667	23-11	.676	80-46
Wichita State	6-3	.667	19-12	.613	72-45
Southern Illinois	4-5	.444	12-16	.429	55-54
Eastern Illinois	3-6	.333	16-19	.457	58-69
Indiana State	2-7	.222	7-20	.259	34-64
Drake	1-8	.111	10-18	.357	41-64
Bradley	1-8	.111	9-27	.250	51-89

* Regular-season champion

Tournament champion



UNI's Post-Season Honorees

Gateway Most Valuable Player

Denise Cuttell - 1990
Mary Bernhardt - 1987

All-Gateway

1990 - Denise Cuttell (1st Team)
Bobbie Kreple (1st Team)
Chris Less (2nd Team)

1989 - Bobbi Becker (1st Team)
Denise Cuttell (2nd Team)
Kris Schroeder (2nd Team)

1988 - Bobbi Becker (1st Team)
Jill Sprague (1st Team)
Denise Cuttell (HM)
Kris Schroeder (HM)

1987 - Bobbi Becker (1st Team)
Mary Bernhardt (1st Team)
Maryellen McCann (1st Team)
Kris Schroeder (HM)

1986 - Mary Bernhardt (1st Team)
Lisa Meeker (1st Team)
Maryellen McCann (2nd Team)
Jill Sprague (2nd Team)

1985 - Sylvia Eder (1st Team)
Lisa Meeker (2nd Team)
Mary Bernhardt (HM)
Jill Sprague (HM)

Gateway Newcomer of the Year

1987 - Kris Schroeder

Gateway Coach of the Year

1987 - Iradge Ahrabi-Fard
1985 - Iradge Ahrabi-Fard

Mideast Region Coach of the Year

1985 - Iradge Ahrabi-Fard

All-Mideast Region

1990 - Denise Cuttell (Second Team)
1989 - Bobbi Becker (1st Team)
1988 - Bobbi Becker (1st Team)

East-West All-Star Classic

1987 - Mary Bernhardt

Academic All-American

1989 - Kris Schroeder (Second Team)
1987 - Mary Bernhardt (First Team)
1986 - Mary Bernhardt (First Team)
1985 - Mary Bernhardt (First Team)

UNI Year-by-Year Records

Year	Record	Coach
1975	15-0-2	Sharon Huddleston
1976	16-14-1	Sharon Huddleston
1977	15-15-5	Sharon Huddleston
1978	15-17-5	Carol Gruber
1979	*28-20-3	Carol Gruber
1980	*32-16-3	Carol Gruber
1981	*40-8-3	Iradge Ahrabi-Fard
1982	38-19-1	Iradge Ahrabi-Fard
1983	21-20	Iradge Ahrabi-Fard
1984	16-16	Iradge Ahrabi-Fard
1985	23-6	Iradge Ahrabi-Fard
1986	**30-3	Iradge Ahrabi-Fard
1987	**34-5	Iradge Ahrabi-Fard
1988	23-10	Iradge Ahrabi-Fard
1989	#25-6	Iradge Ahrabi-Fard
1990	#&28-5	Iradge Ahrabi-Fard

* Iowa AIAW Division II champion

** Gateway Conference champion; NCAA
Tournament participant

Women's Invitational Championship
participant

& Gateway Conference regular-season
champion

UNI Yearly Team Statistics

Year	M/G	K	E	TA	PCT	KPG	DIGS	AST	BS	BA	TB	SA
1983	41/126	1232	701	3834	.138	9.78	1540	**	138	284	280	284
1984	32/109	1266	687	3659	.158	11.61	1405	933	79	341	250	262
1985	29/105	1553	456	3772	.291	14.79	1602	1223	93	375	281	251
1986	33/113	1637	489	3542	.324	14.49	1755	1300	157	292	303	274
1987	39/138	1937	634	4545	.287	14.04	2462	1577	112	387	306	326
1988	33/117	1373	470	3445	.262	11.74	1504	1205	88	419	298	268
1989	31/110	1553	506	3723	.281	14.12	1650	1277	65	438	284	252
1990	33/121	1764	646	4428	.253	14.58	1886	1470	72	565	354	274

Across the Net

Utah

Location: Salt Lake City, Utah
Enrollment: 24,000
Nickname: Utes
Colors: Crimson & White
Conference: Western Athletic
Home Facility (Capacity): HPER 101 (700)
Athletic Director: Dr. Chris Hill
Head Coach: Beth Launiere
Record at School (Yrs.): 7-21 (1 yr.)
Career Record (Yrs.): 7-21 (1 yr.)
Assistant Coach(es): Janna Douglass
1990 Overall Record: 7-21
1990 Conference Record (Finish): 0-10 (6th)
Letterwinners Returning/Lost: 8/1
Volleyball SID: TBA

Office Phone: (801) 581-3511
FAX Phone: (801) 581-4358
Series Record: First meeting



UNIVERSITY OF UTAH

Cal State Northridge

Location: Northridge, California
Enrollment: 31,000
Nickname: Matadors
Colors: Red, White & Black
Conference: Independent
Home Facility (Capacity): Matador Gymnasium (3,000)
Athletic Director: Robert J. Hiebert
Head Coach: Walt Ker
Record at School (Yrs.): 357-114 (12 yrs.)
Career Record (Yrs.): 357-114 (12 yrs.)
Assistant Coach(es): Mora Kanim, Angela Brinton-Collins
1990 Overall Record: 29-9
Post-Season Play: Second at W.I.V.C.
Letterwinners Returning/Lost: 8/4
Volleyball SID: Barry Smith

Office Phone: (818) 885-3243
Home Phone: (818) 712-9281
FAX Phone: (818) 885-4762
Series Record: First meeting



Brigham Young

Location: Provo, Utah
Enrollment: 26,900
Nickname: Cougars
Colors: Royal Blue & White
Conference: Western Athletic
Home Facility (Capacity): Smith Fieldhouse (5,000)
Athletic Director: Lu Wallace
Head Coach: Elaine Michaelis
Record at School (Yrs.): 596-162-5 (22 yrs.)
Career Record (Yrs.): 596-162-5 (22 yrs.)
Assistant Coach(es): Kenny Tonks, Sari Stevens
1990 Overall Record: 26-8
1990 Conference Record (Finish): 9-1 (1st)

Post-Season Play: 0-1 in NCAA Tournament
Letterwinners Returning/Lost: 9/3
Volleyball SID: Patricia Knoell
Office Phone: (801) 378-4908
Home Phone: (801) 225-2897
FAX Phone: (801) 378-3520
Series Record: First meeting



Kansas State

Location: Manhattan, Kansas
Enrollment: 21,137
Nickname: Wildcats
Colors: Purple & White
Conference: Big Eight
Home Facility (Capacity): Ahearn Field House (4,000)
Athletic Director: Steve Miller
Head Coach: Patti Hagemeyer
Record at School (Yrs.): First Year
Career Record (Yrs.): 30-27 (2 yrs.)
Assistant Coach(es): Sue Medley
1990 Overall Record: 11-15
1990 Conference Record (Finish): 3-9 (6th)
Letterwinners Returning/Lost: 8/4
Volleyball SID: TBA

Office Phone: (913) 532-6735
Home Phone: TBA
FAX Phone: (913) 532-6093
Series Record: KSU 2, UNI 1, Tied 1



Boise State

Location: Boise, Idaho
Enrollment: 13,500
Nickname: Broncos
Colors: Orange & Blue
Conference: Big Sky
Home Facility (Capacity): Bronco Gymnasium (1,300)
Athletic Director: Gene Bleymaier
Head Coach: Darlene Bailey Pharmed
Record at School (Yrs.): 248-139 (12 yrs.)
Career Record (Yrs.): 248-139 (12 yrs.)
Assistant Coach(es): Mike Waller
1990 Overall Record: 23-12
1990 Conference Record (Finish): 11-5 (3rd)
Post-Season Play: Third in Big Sky tourney; 5th in W.I.V.C.

Letterwinners Returning/Lost: 4/5
Volleyball SID: Lori Orr Hays
Office Phone: (208) 385-3438
Home Phone: (208) 343-8104
FAX Phone: (208) 385-3361
Series Record: BSU 1, UNI 0



Iowa State

Location: Ames, Iowa
Enrollment: 25,448
Nickname: Cyclones
Colors: Cardinal & Gold
Conference: Big Eight
Home Facility (Capacity): Physical Education Building (750)
Athletic Director: Max Ulrich
Head Coach: Vicki Mealer
Record at School (Yrs.): 99-87 (6 yrs.)
Career Record (Yrs.): 99-87 (6 yrs.)
Assistant Coach(es): TBA
1990 Overall Record: 22-12
1990 Conference Record (Finish): 8-4 (3rd)
Letterwinners Returning/Lost: 8/2
Volleyball SID: Beth Haag

Office Phone: (515) 294-3372
Home Phone: (515) 296-2102
FAX Phone: (515) 294-0558
Series Record: UNI 18, ISU 15



Idaho State

Location: Pocatello, Idaho
Enrollment: 8,000
Nickname: Bengals
Colors: Orange & Black
Conference: Big Sky
Home Facility (Capacity): Reed Fieldhouse (3,500)
Athletic Director: Randy Hoffman
Head Coach: Jon Potter
Record at School (Yrs.): 61-35 (3 yrs.)
Career Record (Yrs.): 61-35 (3 yrs.)
Assistant Coach(es): Steve Hayward
1990 Overall Record: 22-10
1990 Conference Record (Finish): 14-2 (1st)
Post-Season Play: 0-1 in NCAA Tournament

Letterwinners Returning/Lost: 7/2
Volleyball SID: Dave Geringer
Office Phone: (208) 236-2621
Home Phone: (208) 232-6480
FAX Phone: (208) 236-3659
Series Record: ISU 1, UNI 0



Drake

Location: Des Moines, Iowa
Enrollment: 8,029
Nickname: Bulldogs
Colors: Blue & White
Conference: Gateway
Home Facility (Capacity): Drake Fieldhouse (2,000)
Athletic Director: Lynn King
Head Coach: Martie Larsen
Record at School (Yrs.): 17-40 (2 yrs.)
Career Record (Yrs.): 17-40 (2 yrs.)
Assistant Coach(es): Tony Sunga
1990 Overall Record: 10-18
1990 Conference Record (Finish): 1-8 (T9th)
Letterwinners Returning/Lost: 7/3
Volleyball SID: Jean Berger

Office Phone: (515) 271-3740
Home Phone: TBA
FAX Phone: (515) 271-3015
Series Record: UNI 24, Drake 10, Tied 2



Across the Net

Iowa

Location: Iowa City, Iowa
Enrollment: 27,000
Nickname: Hawkeyes
Colors: Black & Gold
Conference: Big Ten
Home Facility (Capacity): Carver-Hawkeye Arena (15,500)
Athletic Director: Dr. Christine H.B. Grant
Head Coach: Ruth Nelson
Record at School (Yrs.): 41-26 (2 yrs.)
Career Record (Yrs.): 560-206-3 (15 yrs.)
Assistant Coach(es): Maureen Maurek, Patricia Dowdell
1990 Overall Record: 19-15
1990 Conference Record (Finish): 10-8 (5th)

Post-Season Play: 3-1 in W.I.V.C.
Letterwinners Returning/Lost: 12/5
Volleyball SID: Beth Weber
Office Phone: (319) 335-9267
Home Phone: (319) 337-2827
FAX Phone: (319) 335-9417
Series Record: UI 21, UNI 18



Louisiana State

Location: Baton Rouge, Louisiana
Enrollment: 23,746
Nickname: Fighting Tigers
Colors: Purple & Gold
Conference: Southeastern
Home Facility (Capacity):
Athletic Director: Dr. William E. Davis
Head Coach: J. Scott Luster
Record at School (Yrs.): 179-58
Career Record (Yrs.): 317-148 (11 yrs.)
Assistant Coach(es): Frances Compton, Fran Ralston
1990 Overall Record: 34-7
1990 Conference Record (Finish): 11-0 (1st)
Post-Season Play: Tied for third in

NCAA Championships
Letterwinners Returning/Lost: 9/3
Volleyball SID: Robert McCann
Office Phone: (504) 388-8226
Home Phone:
FAX Phone: (504) 388-1861
Series Record: First meeting



Central Michigan

Location: Mt. Pleasant, Michigan
Enrollment: 17,100
Nickname: Chippewas
Colors: Maroon & Gold
Conference: Mid-American
Home Facility (Capacity): Rose Fieldhouse (600)
Athletic Director: Marcy Weston
Head Coach: Terrie Rabbie
Record at School (Yrs.): 18-27 (2 yrs.)
Career Record (Yrs.): 221-172 (10 yrs.)
1990 Overall Record: 9-17
1990 Conference Record (Finish): 4-4 (4th)
Letterwinners Returning/Lost: 6/3
Volleyball SID: Rob Kaminski

Office Phone: (517) 774-3277
FAX Phone: (517) 774-7324
Series Record: UNI 1, CMU 0



Northwestern

Location: Evanston, Illinois
Enrollment: 7,400
Nickname: Wildcats
Colors: Purple & White
Conference: Big Ten
Home Facility: Welsh-Ryan Arena
Athletic Director: Bruce Corrie
Head Coach: Jerry Angle
Record at School (Yrs.): 433-244-5 (17 yrs.)
Career Record (Yrs.): 433-244-5 (17 yrs.)
Assistant Coach(es): Jenny Collins
1990 Overall Record: 18-16
1990 Conference Record (Finish): 9-9 (T9th)
Letterwinners Returning/Lost: 8/2
Volleyball SID: TBA

Office Phone: (708) 491-7503
FAX Phone: (708) 491-8818
Series Record: NU 2, UNI 1



Dayton

Location: Dayton, Ohio
Enrollment: 6,500
Nickname: Lady Flyers
Colors: Red & Blue
Conference: Midwestern Collegiate
Home Facility (Capacity): UD Fieldhouse (4,000)
Athletic Director: TBA
Head Coach: Julie Biermann
Record at School (Yrs.): 92-98 (5 yrs.)
Career Record (Yrs.): 92-98 (5 yrs.)
Assistant Coach(es): Jeannie Richardson, Bernie Goldfine
1990 Overall Record: 17-22
1990 Conference Record (Finish): 5-3
Post-Season Play: 0-4 at W.I.V.C.
Letterwinners Returning/Lost: 8/3

Volleyball SID: David Reed
Office Phone: (513) 229-4460
Home Phone: (513) 773-8376
FAX Phone: (513) 229-4461
Series Record: First meeting



San Diego State

Location: San Diego, California
Enrollment: 34,000
Nickname: Aztecs
Colors: Scarlet & Black
Conference: Western Athletic
Home Facility (Capacity): Peterson Gym (3,668)
Athletic Director: Fred Miller
Head Coach: Rudy Suwara
Record at School (Yrs.): 413-191-3 (15 yrs.)
Career Record (Yrs.): 577-290-7 (19 yrs.)
Assistant Coach(es): Myles Gabel
1990 Overall Record: 24-12
1990 Conference Record (Finish): 6-4 (3rd)
Post-Season Play: 1-1 in NCAA

Tournament
Letterwinners Returning/Lost: 8/3
Volleyball SID: TBA
Office Phone: (619) 594-5547
FAX Phone: (619) 582-6541
Series Record: First meeting



Northern Illinois

Location: DeKalb, Illinois
Enrollment: 24,509
Nickname: Huskies
Colors: Cardinal & Black
Conference: North Star
Home Facility (Capacity): Evans Field House (6,068)
Athletic Director: Gerald O'Dell
Head Coach: Pete Waite
Record at School (Yrs.): 57-36 (3 yrs.)
Career Record (Yrs.): 57-36 (3 yrs.)
Assistant Coach(es): Lori Dailey
1990 Overall Record: 26-8
1990 Conference Record (Finish): 6-1 (T 1st)
Post-Season Play: Third in North Star Tournament

Letterwinners Returning/Lost: 8/5
Volleyball SID: Kari Brackett
Office Phone: (815) 753-9539
Home Phone: (815) 748-4230
FAX Phone: (815) 753-9540
Series Record: UNI 2, NIU 1



Wisconsin-Milwaukee

Location: Milwaukee, Wisconsin
Enrollment: 25,000
Nickname: Panthers
Colors: Black & Gold
Conference: Independent
Home Facility (Capacity): Klotz Center (4,000)
Athletic Director: Bud K. Haidet
Head Coach: Tom Pleyte
Record at School (Yrs.): 534-199 (13 yrs.)
Career Record (Yrs.): 534-199 (13 yrs.)
Assistant Coach(es): TBA
1990 Overall Record: 19-18
Letterwinners Returning/Lost: 7/5
Volleyball SID: Janet Watson/Steve Lonski
Office Phone: (414) 229-4593

FAX Phone: (414) 229-6759
Series Record: UWM 2, UNI 1



Across the Net

Valparaiso

Location: Valparaiso, Indiana
Enrollment: 3,800
Nickname: Crusaders
Colors: Brown & Gold
Conference: North Star
Home Facility (Capacity): Athletics-Recreation Center (4,500)
Athletic Director: William Steinbrecher
Head Coach: Cindy Harris
Record at School (Yrs.): 17-18 (1 yr.)
Career Record (Yrs.): 17-18 (1 yr.)
Assistant Coach(es): TBA
1990 Overall Record: 17-18
1990 Conference Record (Finish): 2-5 (5th)

Post-Season Play: Fifth in North Star Tournament
Letterwinners Returning/Lost: 5/5
Volleyball SID: Bill Rogers
Office Phone: (219) 464-5232
Home Phone: (219) 477-4605
FAX Phone: (219) 464-5762
Series Record: UNI 4, VU 0



Indiana State

Location: Terre Haute, Indiana
Enrollment: 11,000
Nickname: Sycamores
Colors: Royal Blue & White
Conference: Gateway
Home Facility (Capacity): ISU Arena (3,000)
Athletic Director: Brian Faison
Head Coach: Rhonda Woodward
Record at School (Yrs.): 24-37 (2 yrs.)
Career Record (Yrs.): 24-37 (2 yrs.)
Assistant Coach(es): Rhonda Low
1990 Overall Record: 7-20
1990 Conference Record (Finish): 2-7 (8th)
Letterwinners Returning/Lost: 6/3
Volleyball SID: Jackie Fischer

Office Phone: (812) 237-4159
Home Phone: (812) 232-2754
FAX Phone: (812) 237-4157
Series Record: UNI 10, ISU 1



Minnesota

Location: Minneapolis, Minnesota
Enrollment: 41,000
Nickname: Golden Gophers
Colors: Maroon & Gold
Conference: Big Ten
Home Facility (Capacity): Williams Arena (17,000)
Athletic Director: Chris Voelz
Head Coach: Stephanie Schleuder
Record at School (Yrs.): 179-120 (9 yrs.)
Career Record (Yrs.): 477-232 (18 yrs.)
Assistant Coach(es): Vivian Langley, Steve Willingham
1990 Overall Record: 8-26
1990 Conference Record (Finish): 2-16 (T9th)
Letterwinners Returning/Lost: 7/2

Volleyball SID: Angie Hultman
Office Phone: (612) 624-3335
Home Phone: (612) 631-8271
FAX Phone: (612) 624-8018
Series Record: UM 11, UNI 1



Southwest Missouri State

Location: Springfield, Missouri
Enrollment: 20,652
Nickname: Lady Bears
Colors: Maroon & White
Conference: Gateway
Home Facility (Capacity): John Q. Hammons Student Center (8,858)
Athletic Director: Bill Rowe
Head Coach: Linda Dollar
Record at School (Yrs.): 667-206-21 (19 yrs.)
Career Record (Yrs.): 667-206-21 (19 yrs.)
Assistant Coach(es): John Rodgers, Nick Cheronis
1990 Overall Record: 24-8
1990 Conference Record (Finish): 7-2 (2nd)

Post-Season Play: 1st in Gateway Tourney; 0-1 in NCAA Tournament
Letterwinners Returning/Lost: 8/4
Volleyball SID: Jon Ripberger
Office Phone: (417) 836-5402
Home Phone: (417) 866-7060
FAX Phone: (417) 836-4868
Series Record: UNI 8, SMSU 5



Missouri

Location: Columbia, Missouri
Enrollment: 24,972
Nickname: Tigers
Colors: Old Gold & Black
Conference: Big Eight
Home Facility (Capacity): Hearnes Center (13,143)
Athletic Director: Dick Tamburo
Head Coach: Craig Sherman
Record at School (Yrs.): 46-106 (5 yrs.)
Career Record (Yrs.): 46-106 (5 yrs.)
Assistant Coach(es): Wayne Kreklow
1990 Overall Record: 9-20
1990 Conference Record (Finish): 1-11 (7th)
Letterwinners Returning/Lost: 9/3
Volleyball SID: Jack Watkins
Office Phone: (314) 882-3241

Home Phone: (314) 442-3989
FAX Phone: (314) 882-4720
Series Record: UNI 7, MU 4, Tied 2



Wichita State

Location: Wichita, Kansas
Enrollment: 16,668
Nickname: Shockers
Colors: Yellow & Black
Conference: Gateway
Home Facility (Capacity): Levitt Arena (10,656)
Athletic Director: Tom Shupe
Head Coach: Phil Shoemaker
Record at School (Yrs.): 110-145 (8 yrs.)
Career Record (Yrs.): 110-145 (8 yrs.)
Assistant Coach(es): TBA
1990 Overall Record: 19-12
1990 Conference Record (Finish): 6-3 (T3rd)
Post-Season Play: Tie for third in Gateway tourney

Letterwinners Returning/Lost: 7/2
Volleyball SID: TBA
Office Phone: (316) 689-3265
FAX Phone: (316) 689-3336
Series Record: UNI 10, WSU 0, Tied 1



Illinois State

Location: Normal, Illinois
Enrollment: 21,000
Nickname: Redbirds
Colors: Red & White
Conference: Gateway
Home Facility (Capacity): Redbird Arena (10,200)
Athletic Director: Ron Wellman
Head Coach: Julie Morgan
Record at School (Yrs.): 84-42 (4 yrs.)
Career Record (Yrs.): 144-89 (7 yrs.)
Assistant Coach(es): Karen Guthmiller, Stacey Anderson
1990 Overall Record: 23-11
1990 Conference Record (Finish): 6-3 (T3rd)
Post-Season Play: Tie for third in

Gateway Tournament
Letterwinners Returning/Lost: 7/4
Volleyball SID: Tom Lamonica
Office Phone: (309) 438-3825
Home Phone: (309) 454-1645
FAX Phone: (309) 438-5634
Series Record: ISU 6, UNI 5



Winona State

Location: Winona, Minnesota
Enrollment: 7,000
Nickname: Warriors
Colors: Northwestern Purple & White
Conference: Northern Sun
Home Facility (Capacity): Memorial Hall (4,000)
Athletic Director: Gail Grimm
Head Coach: Lavonne Fiereck
Record at School (Yrs.): 302-268 (20 yrs.)
Career Record (Yrs.): 302-268 (20 yrs.)
1990 Overall Record: 28-9
1990 Conference Record (Finish): 8-4 (3rd)
Post-Season Play: NAIA District Playoffs

Letterwinners Returning/Lost: 3/3
Volleyball SID: Daryl Henderson
Office Phone: (507) 457-5576
Home Phone: (507) 452-4109
FAX Phone: (507) 457-5606
Series Record: UNI 10, WSU 0

Across the Net

Eastern Illinois

Location: Charleston, Illinois
Enrollment: 10,200
Nickname: Lady Panthers
Colors: Blue & Gray
Conference: Gateway
Home Facility (Capacity): McAfee Gym (2,000)

Athletic Director: Mike Ryan
Head Coach: Betty Ralston
Record at School (Yrs.): 153-124 (8 yrs.)
Career Record (Yrs.): 238-169 (12 yrs.)
Assistant Coach(es): Diane Kruto
1990 Overall Record: 16-19
1990 Conference Record (Finish): 3-6 (7th)
Letterwinners Returning/Lost: 6/3
Volleyball SID: Ron Yoakum

Office Phone: (217) 581-6408
Home Phone: (217) 581-3697
FAX Phone: (217) 581-6434
Series Record: UNI 7, EIU 5



Western Illinois

Location: Macomb, Illinois
Enrollment: 13,000
Nickname: Westerwinds
Colors: Purple & Gold
Conference: Gateway
Home Facility (Capacity): Brophy Gym (1,500)

Athletic Director: Dr. Helen Smiley
Head Coach: Juli Kartel
Record at School (Yrs.): 85-58 (5 yrs.)
Career Record (Yrs.): 85-58 (5 yrs.)
Assistant Coach(es): Jolene Vinson
1990 Overall Record: 21-9
1990 Conference Record (Finish): 6-3 (T3rd)
Letterwinners Returning/Lost: 8/3
Volleyball SID: Bonnie Barker

Office Phone: (309) 298-1663
Home Phone: (309) 833-4811
FAX Phone: (309) 298-3366
Series Record: UNI 11, WIU 7, Tied 1



Southern Illinois

Location: Carbondale, Illinois
Enrollment: 24,000
Nickname: Salukis
Colors: Maroon & White
Conference: Gateway
Home Facility (Capacity): Davies Gym (1,250)

Athletic Director: Jim Hart
Head Coach: Sonya Locke
Record at School (Yrs.): First year
Career Record (Yrs.): 35-5 (1 yr.)
Assistant Coach(es): Lori Nishikawa, Mary Kay Waller
1990 Overall Record: 12-16
1990 Conference Record (Finish): 4-5 (6th)
Letterwinners Returning/Lost: 11/2

Volleyball SID: Mitchell Parkinson
Office Phone: (618) 453-5470
Home Phone: (618) 457-7410
FAX Phone: (618) 536-2152
Series Record: UNI 6, SIU 6



Bradley

Location: Peoria, Illinois
Enrollment: 5,700
Nickname: Lady Braves
Colors: Red & White
Conference: Gateway
Home Facility (Capacity): Robertson Field House (7,300)

Athletic Director: Ron Ferguson
Head Coach: Pam Stanek
Record at School (Yrs.): 156-186 (9 yrs.)
Career Record (Yrs.): 332-276 (14 yrs.)
Assistant Coach(es): Stacy King
1990 Overall Record: 9-27
1990 Conference Record (Finish): 1-8 (T9th)
Letterwinners Returning/Lost: 8/3
Volleyball SID: Bo Ryan

Office Phone: (309) 677-2627
Home Phone: (309) 347-3343
FAX Phone: (309) 677-2626
Series Record: UNI 12, Bradley 5



Senior Kris Shroeder returns after missing last season due to injury.

1991 Northern Iowa Volleyball

Aug. 30-31	at Boise State Invitational (8-30) vs. Utah (8-30) vs. Brigham Young (8-31) vs. Boise State (8-31) vs. Idaho State	10 a.m. 4 p.m. 2 p.m. 6 p.m.
SEPT. 4	KANSAS STATE	7 p.m.
Sept. 8	at All-Iowa Classic (Des Moines) UNI vs. Iowa State Iowa vs. Drake Consolation Championship	10 a.m. 12 p.m. 6 p.m. 8 p.m.
Sept. 13-14	at Northern Illinois Invitational (9-13) vs. Central Michigan (9-14) vs. Dayton (9-14) vs. Northern Illinois	4:30 p.m. 9 a.m. 7 p.m.
Sept. 20-21	at Northwestern/Sheraton Classic (9-20) Northwestern vs. San Diego State (9-20) UNI vs. Louisiana State (9-21) Consolation & Championship	6 p.m. 8 p.m. TBA
Sept. 28	at Wisconsin-Milwaukee Invitational	TBA
Oct. 1	* at Drake	7 p.m.
OCT. 5	ALUMNI	7 p.m.
Oct. 12	at Iowa State	7 p.m.
OCT. 15	MINNESOTA	7 p.m.
OCT. 19-20	UNI TRIANGULAR (10-19) UNI vs. MISSOURI (10-20) Iowa vs. Missouri (10-20) UNI vs. IOWA	7 p.m. 10 a.m. 7 p.m.
OCT. 25	* ILLINOIS STATE	7 p.m.
OCT. 26	* INDIANA STATE	7 p.m.
Nov. 1	*at Southwest Missouri State	7 p.m.
Nov. 2	* at Wichita State	7 p.m.
NOV. 6	WINONA STATE	7 p.m.
NOV. 8	* EASTERN ILLINOIS	7 p.m.
NOV. 9	* SOUTHERN ILLINOIS	5 p.m.
Nov. 15	* at Western Illinois	7 p.m.
Nov. 16	* at Bradley	7 p.m.
Nov. 22-23	at Gateway Conference Championships	TBA

* Gateway Conference matches
All times Central.