

1990

## 1989-90 Panther Women's Basketball

University of Northern Iowa

*Let us know how access to this document benefits you*

Copyright ©1989 Athletics, University of Northern Iowa

Follow this and additional works at: <https://scholarworks.uni.edu/amg>



Part of the [Higher Education Commons](#)

---

### Recommended Citation

University of Northern Iowa, "1989-90 Panther Women's Basketball" (1990). *Athletics Media Guides*. 160.  
<https://scholarworks.uni.edu/amg/160>

This Book is brought to you for free and open access by the Athletics at UNI ScholarWorks. It has been accepted for inclusion in Athletics Media Guides by an authorized administrator of UNI ScholarWorks. For more information, please contact [scholarworks@uni.edu](mailto:scholarworks@uni.edu).

**Offensive Materials Statement:** Materials located in UNI ScholarWorks come from a broad range of sources and time periods. Some of these materials may contain offensive stereotypes, ideas, visuals, or language.

# REGENT

COMING ATTRACTION  
89 PANTHER 90  
WOMENS BASKETBALL



UNIVERSITY OF NORTHERN IOWA



# Table of Contents

Contents, Media Outlets, Quick Facts,	
Telephone Directory .....	IFC
To The Media, Sports Information, Credits,	
On The Cover .....	1
University Administration, Athletic Staff,	
Support Staff .....	2
The University, UNI-Dome .....	3
Coaching Staff .....	4-6
Basketball Support Staff .....	7
Coach's Interview .....	8
Rosters, Pronunciation Guide .....	9
Player Profiles .....	10-14
1988-89 Review, Records Set .....	15
Game-By-Game Summary .....	16
1988-89 Results .....	17
Season Highs and Lows .....	18
Final Statistics .....	19
Conference Administration, History,	
Statistics .....	20-21
Opponent Profiles .....	22-26
Panther Records .....	27-28
Year-By-Year Results .....	29-30
Records Versus All Opponents .....	31
All-Time Roster .....	32
Team Photo .....	IBC
1989-90 Schedule .....	BC



## Athletic Directory (AC 319)

Robert Bowlsby, Athletic Director .....	273-2470
Julie Bright, Business Manager .....	273-2475
Kevin Buismann, Accounts Manager .....	273-6133
Joan Craig, A.D. Secretary .....	273-2470
Gene Desonia, Women's BB SID .....	273-3642
Jim Egli, Asst. A.D.-Facilities .....	273-6050
Phil Hatlem, Ticket Manager .....	273-6131
Holly Huso, Asst. Women's BB Coach .....	273-6338
John Jerimer, Assoc. A.D. ....	273-3097
Cindy Johnson, Women's BB	
Program Asst. ....	273-6987
Nancy Justis, Sports Information Dir. ....	273-6354
Kevin Kane, Asst. Sports Info. Dir. ....	273-3642
Bob Kincaid, Academic Advisor .....	273-6321
Dave Kohrs, Facilities Coordinator .....	273-2865
Terri Lasswell, Head Women's BB Coach .....	273-6443
Lee Miller, Asst. A.D.-Development .....	273-6078
Terry Noonan, Head Trainer .....	273-6369
Joyce Picht, Program Assoc./Acct. Man. ....	273-6133
Rene Revis, Women's BB Trainer .....	273-6108
Julie Schoeman, Sports Info. Secretary .....	273-3100
Dick Timmerman, Equipment Manager .....	273-2459
Jack Wilkinson, NCAA Faculty Rep .....	273-2515
Sandra Williamson, Assoc. A.D. ....	273-6033

## Panther Quick Facts

Location: Cedar Falls, IA 50613-0314  
 Founded: 1876  
 Enrollment: 11,800  
 Nickname: Panthers  
 Colors: Purple and Old Gold  
 Arena: UNI-Dome (10,000-20,000)  
 West Gymnasium (3,500)  
 Affiliation: NCAA Division I  
 Conference: Gateway Collegiate Athletic  
 Conference  
 President: Dr. Constantine Curris  
 Athletic Director: Robert Bowlsby  
 Head Coach: Terri Lasswell (Washburn '78)  
 Assistant Coaches: Holly Huso (North Dakota State  
 '86), Cindy Johnson (Iowa '81), Annette Gonzales  
 (Missouri Western State '89)  
 Sports Information Director: Nancy Justis  
 Women's Basketball SID: Gene Desonia  
 Faculty Representative: Jack Wilkinson  
 Head Athletic Trainer: Terry Noonan  
 Women's Basketball Trainer: Rene Revis  
 Ticket Manager: Phil Hatlem

## Media Outlets

### Newspapers

**Waterloo Courier:** Russ Smith, Sports Editor, P.O.  
 Box 540, Waterloo, IA 50704, 319-291-1466.  
**Des Moines Register:** Sports Editor, P.O. Box 957,  
 Des Moines, IA 50304, 1-800-532-1455 (in Iowa),  
 1-800-247-5346 (out-of-state).  
**The Gazette:** Mark Dukes, Sports Editor, 500 3rd  
 Ave. S.E., Cedar Rapids, IA 52401, 319-398-8257.  
**Northern Iowan:** Sports Editor, University of  
 Northern Iowa, Cedar Falls, IA 50614, 319-273-2157.  
**Associated Press:** Chuck Schoffner, P.O. Box 1741,  
 Des Moines, IA 50306, 1-800-362-2580.  
**United Press International:** 317 6th Ave., Suite 610,  
 Des Moines, IA 50309, 1-800-362-2337.  
**Quad City Times:** Sports Editor, Davenport, IA  
 52801, 319-383-2220.  
**Dan McCool:** Des Moines Register, 915½ Clay St.,  
 Cedar Falls, IA 50613.

### Radio

**WMT Radio:** Ron Gonder, Sports Director, P.O. Box  
 2147, Cedar Rapids, IA 52406, 319-395-0533.  
**KXEL Radio:** Sports Director, Highway 218 East, Box  
 1540, Waterloo, IA 50704, 319-234-6397.  
**KCFI Radio:** Kelly Neff, Sports Director, 721 Shirley  
 St., Cedar Falls, IA 50613, 319-277-1918.  
**WHO Radio:** Sports Director, 1801 Grand Ave., Des  
 Moines, IA 50308, 515-242-3500.  
**KWLO Radio:** Bob Bakken, Sports Director, Box  
 1330, Waterloo, IA 50703, 319-234-2200.  
**KHAK Radio:** Bob Brooks, Sports Director, Suite  
 450, 425 Second St. S.E., Cedar Rapids, IA 52401.

### Television

**KWWL-TV:** Bob Healey, Sports Director, KWWL  
 Bldg., Waterloo, IA 50703, 319-291-1246.  
**KCRG-TV:** John Campbell, Sports Director, 2nd Ave.  
 at 5th St. S.E., Cedar Rapids, IA 52401, 319-398-8391.  
**KGAN-TV:** Sports Director, P.O. Box 3131, Cedar  
 Rapids, IA 52406, 319-395-6188.  
**WHO-TV:** Sports Director, 1801 Grand Ave., Des  
 Moines, IA 50308, 515-242-3500.  
**KCCI-TV:** Sports Director, Des Moines, IA 50309,  
 515-247-8800.  
**WOC-TV:** Sports Director, Davenport, IA 52801,  
 319-383-7000.  
**WOI-TV:** Sports Director, Ames, IA 50011,  
 515-294-4333.  
**Iowa Public Television:** Doug Brooker, P.O. Box  
 6450, Johnston, IA 50131, 515-281-4500.



# Welcome to Panther Country

## To The Media

Welcome to the University of Northern Iowa and Panther women's basketball.

Your host in the UNI-Dome is Gene Desonia, sports information graduate assistant. Any questions or concerns during your visit to Panther country can be directed toward Gene by calling 319-273-3642 (office) or 319-266-2506 (home). Sports Information Director Nancy Justis can be reached in her office at 319-273-6354.

Pregame statistics, press notes and game programs will be made available at the press table prior to the start of each contest. Postgame statistics will be distributed approximately 15 minutes of the completion of each contest. SIDs will have access to a telephone for long-distance calls.

A radio courtesy can be coordinated by calling Kelly Neff, sports director, KCFI Radio, Cedar Falls, IA, at 319-277-1918.

Only working media will be allowed access to the press row area. Photographers can obtain courtside press passes by requesting them through the sports information office one week prior to the event.

All mail correspondence should be addressed to Sports Information Office, University of Northern Iowa, Upper NW UNI-Dome, Cedar Falls, IA 50613-0314.

**Nancy Justis** became the SID in 1979 after serving three years as the full-time assistant at UNI. A native of Cedar Rapids, IA, she received her bachelor's degree in journalism from the University of Iowa in 1973.

After graduation, she worked for the Fort Collins (CO) Coloradoan before coming to UNI as an assistant editor in the Public Relations Office.

She was a member of the Olympic Press Operations staff in Los Angeles in 1984 and the Pan American staff in 1987 in Indiana.

Justis is a member of the College Sports Information Directors of America (CoSIDA), Women in Communications, Inc., and the U.S. Basketball Writers Association.

## Credits

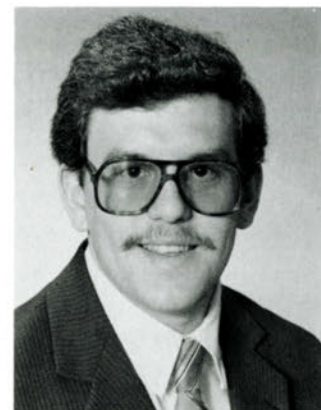
The 1989-90 University of Northern Iowa Women's Basketball Media Guide was written and designed by Gene Desonia, sports information graduate assistant, with contributions by Josh Lehman, student assistant.

Editorial supervision was provided by Nancy Justis, sports information director, and Kevin Kane, assistant sports information director. Photography by Bill Witt and production by Beth LaVelle, both of the Office of Public Relations.

Special thanks to Tim Engstrom of the Regent Theatre, Cedar Falls, IA; Roger Crimmins of the Waterloo Community Playhouse, Marty Waterman of the University of Northern Iowa Strayer-Wood Theatre, and Lisa Skarlis at Seiferts in the College Square Mall, Cedar Falls, IA.



**Nancy Justis, Director of Sports Information**



**Gene Desonia, Graduate Assistant Sports Information**

CoSIDA has honored her with publication awards for football programs and brochures and wrestling brochures.

Married to Robert Justis, who announces Panther football and basketball games, the couple has one daughter, Nicole.

**Gene P. Desonia** is a first-year sports information graduate assistant at the University of Northern Iowa. He will be responsible for the women's basketball sports information duties while working toward a master's degree in communication-public relations.

A native of Marquette, MI, he received his bachelor's degree in Speech Communication from Northern Michigan University (1989).

While at NMU, he served as a student assistant for three years under now-retired SID Gil Heard. He also completed an eight-month internship at the United States Olympic Training Center in Marquette, where he coordinated the University's 1988 Summer Sports Schools' promotions and wrote features on Olympic athletes and coaches.

Desonia, 26, worked part-time as sports correspondent for *The Mining Journal* daily newspaper, play-by-play announcer of high school ice hockey and basketball at WDMJ-AM radio, and color commentator for collegiate ice hockey, basketball and volleyball at Bresnan Communications.

An eight-year member of the Armed Forces, he served three years of active duty in the U.S. Army and was a member of the Michigan National Guard and U.S. Army Reserve.

Married to the former Bonnie Jean Burley, the couple have three children, Gene Jr., Daniel and Heather.

**On the cover** — The Panthers set for their 1989-90 season premiere in front of the Regent Theatre located in downtown Cedar Falls, IA. Pictured left to right are: Front Row: Kathy Kolstedt. Second Row: Molly Kelly, Loretha Mosley, Nicki Rohde and Karen Amrhein. Third Row: Linda Steiner, Deanna Samuelson, Katie McFadden, Jill Jameson, Julie Street and Rhonda Wiebold.



# Executive Producers

**Dr. Constantine W. Curris** assumed the Presidency of the University of Northern Iowa in August, 1983. He is only the seventh chief executive in the University's 113-year history.

Prior to assuming the UNI Presidency, Curris served 10 years as president of Murray State University in Kentucky. The University's new eight-million dollar student center is named the Curris Center.

Other professional experiences include serving as Dean of Students at Marshall University and Vice-President and Academic Dean of Students at Marshall University and Vice-President and Academic Dean of both Midway (KY) College and the West Virginia Institute of Technology.

Curris received a bachelor's degree magna cum laude in political science from Kentucky in 1962. He received a master's in political science and public administration from Illinois in 1965 and his Ed.D degree in higher education from Kentucky in 1967.

Curris serves as Trustee of Midway College, Director of American Humanics and as a member of the Center for the Study of the Presidency's National Advisory Council. He recently served as Chairman of the Iowa Task Force on Teacher Education and Certification and was a charter member of the National Small Business Development Center Advisory Board. He is a member of the Iowa Future Project; and is on the Board of Trustees of First in the Nation in Education/Iowa's Education Research Foundation and Junior Achievement of Black Hawk Land, Inc.

**Robert A. Bowlsby** was selected Director of Athletics in mid February, 1984, after serving as Assistant Athletic Director for Facilities and Interim AD when Stan Sheriff resigned the post in September, 1983.

A native of Waterloo, IA, he is a 1970 graduate of Waterloo West High School. He earned a bachelor's degree in health, physical education and recreation from Moorhead State in 1975 and a master's degree in recreation administration from Iowa in 1978.

Bowlsby served as Assistant Director of Recreational Services at Iowa from 1978-81, working in facility management and with responsibilities for supervision of a wide variety of recreation and athletic facilities on campus.



**Dr. Constantine W. Curris**



**Mr. Robert A. Bowlsby**

He joined the UNI staff in April of 1981. His experience at UNI has been broadbased, including involvement in all areas of the intercollegiate athletics program and promotion of the UNI-Dome. He has worked with a variety of athletic events, special programs and entertainment attractions.

Since the time of his appointment as Director of Athletics, Bowlsby has been actively involved in the promotion and marketing of the athletics program, the development of the Athletics Hall of Fame and the formulation of the Gateway Collegiate Athletic Conference football division.

He has served on the NCAA Committee on Financial Aid and Amateurism and the NCAA Wrestling Committee.

Bowlsby also is involved in a wide array of community activities. He serves as the current President of the Black Hawk County family YMCA and sits on the Board of Directors of Exceptional Persons and the Iowa Games. He also serves on the Quakerdale, Sartori Hospital and Iowa Sister State advisory committees.

## Panther Athletic Staff

Athletic Director .....	Robert Bowlsby
Assoc. A.D. ....	John Jerimer
Assoc. A.D. ....	Sandra Williamson
Asst. A.D.-Development. ....	Lee Miller
Asst. A.D.-Facilities .....	Jim Egli
Accounts Manager .....	Kevin Buisman
Business Manager .....	Julie Bright
Sports Info. Director. ....	Nancy Justis
Program Asst./Acct. Man .....	Joyce Picht

## Panther Support Staff

NCAA Faculty Rep. ....	Jack Wilkinson
Academic Advisor .....	Bob Kincaid
Facilities Coordinator .....	Dave Kohrs
Ticket Manager .....	Phil Hatlem
Head Trainer .....	Terry Noonan
Women's BB Trainer. ....	Rene Revis
A.D. Secretary .....	Joan Craig
Sports Info. Secretary .....	Julie Schoeman
Women's BB SID. ....	Gene Desonia



# This is Northern Iowa

Located in Cedar Falls, UNI was founded in 1876 as the Iowa State Normal School. From a single building on a 40-acre campus, the University has grown to include more than 40 major buildings and 11,800 students.

UNI emphasizes outstanding undergraduate education with complementary graduate programs at the master's, specialists and doctoral levels. Building on its historic strength in teacher education, Northern Iowa has developed other fine programs in its School of Business, College of Humanities and Fine Arts, College of Natural Sciences and College of Social and Behavioral Sciences.

The City of Cedar Falls is a pleasant and historic college town adjacent to Waterloo. Together, they are part of a major metropolitan area with a population of more than 100,000. It is a center for manufacturing, finance, commerce and cultural activities in northeast Iowa.

---

## The Production House

---

Northern Iowa's fans demand the best from the Panthers on the court and the school provides some of the best facilities in the Midwest.

The UNI-Dome is one of the nation's finest basketball facilities, no matter at what level the game is played. The building actually combines the features of three different buildings — a football stadium, fieldhouse and large auditorium. It contains facilities to hold a variety of events, such as concerts, exhibitions, trade shows, pageants, rallies and convocations, as well as football, basketball and softball games and wrestling and track meets.

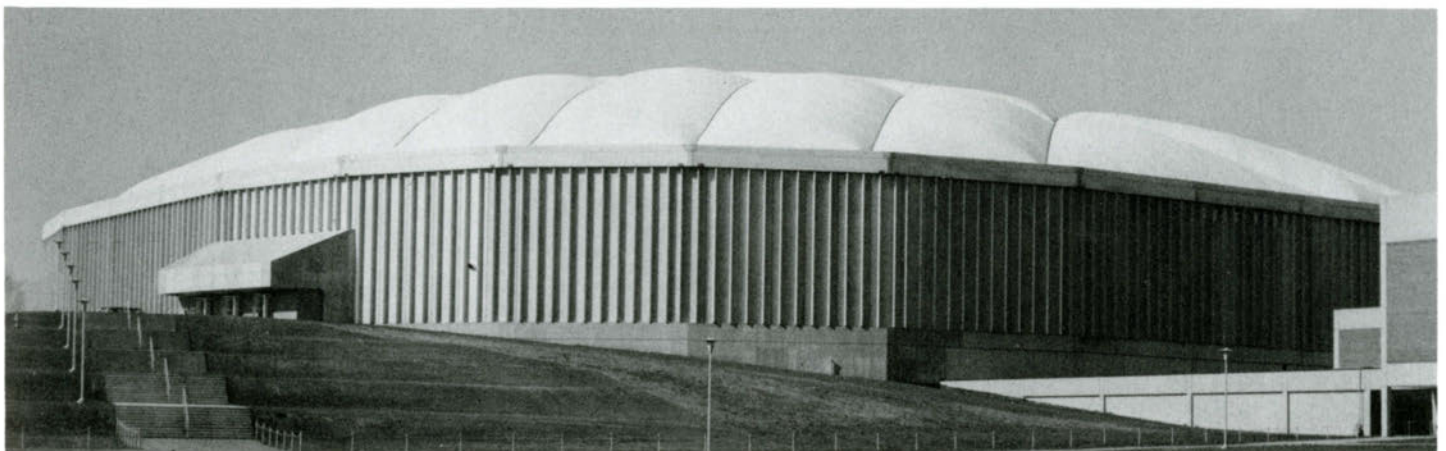
The UNI-Dome has hosted such events as the NCAA gymnastic and wrestling championships; the Iowa High School football playoffs; concerts by Dolly Parton, the Eagles, REO Speedwagon, Fleetwood Mac and the Rolling Stones; antique car shows; tractor pulls and many other non-athletic events.

The UNI-Dome's air-supported Fiberglass fabric roof allows for ample natural light during daylight hours. Its artificial turf for football games can be rolled up in a minimum of 36 hours. Underneath, on a synthetic floor area, are basketball and tennis courts and an eight-lane, 220-yard oval running track.



Approximately 16,400 spectators can be seated for football and 10,000-20,000 for courtside activities. For stage events, such as commencements, concerts and speaker's series, total capacity, using movable bleachers and chairs, can reach 25,000.

A spacious press box atop the east stands has facilities for 20 radio stations, television capacities and seating for up to 125 people. A photography darkroom, photo bay, concession area and scouting booths are other features. Two huge scoreboards flash messages and information to spectators throughout events. The west press box provides a meeting room for UNI Athletic Club and space for special events.







Directing the Panther squad this season are (l to r): Cindy Johnson, program assistant; Terri Lasswell, head coach; Annette Gonzales, graduate assistant; and Holly Huso, assistant coach.



# The Directors

---

**Terri A. Lasswell** brings a new look to University of Northern Iowa women's basketball this year, replacing Kimberly Mayden who spent five years at the Panther helm.

Signed to a four-year contract April 6, 1989, the Emmett, KS, native comes to UNI from Kansas State University, a school rich in basketball tradition.

Lasswell, who served as assistant women's basketball coach at KSU the past two seasons and administrative assistant one year prior, was responsible for nation-wide recruiting, daily practice sessions, scheduling, travel arrangements and academic counseling.

A recognized speaker on coaching and physical education topics, she earned a B.A. in physical education at Washburn University (1978) and completed her master's in administration and kinesiology at Kansas University (1983).

The multi-sport athlete lettered two seasons in basketball and one season in volleyball at Washburn upon transferring from KSU. She had played one season with the Wildcat basketball squad.

While at Washburn, she earned all-conference honors in both basketball and volleyball and was selected basketball team captain her senior year.

In two seasons at WU, she netted 516 points and 399 rebounds, averaging 12.2 and 9.5 per game, respectively, with the Lady Blues. Upon graduating, she was the school's eighth all-time leading rebounder.

Lasswell served at Washburn as assistant women's basketball coach, assistant women's volleyball coach and softball coach in 1985-86. The previous season, she served as assistant women's basketball coach and sports facilities coordinator.

Her coaching career began at Washburn Rural High School in Topeka, KS, at the helm of the girls' basketball and volleyball teams.

In five seasons, she turned a 3-18 basketball team into a 23-2 state tournament contender. She compiled a 61-48 ledger in five seasons, gaining four straight state tournament berths. Her volleyball squads made three state tourney appearances.

Following the Junior Blues' 1984 season, she was named Centennial League Coach-of-the-Year, Kansas Basketball Coaches Coach-of-the-Year and was a mentor in the Kansas Basketball Coaches Association All-Star Game. She twice was honored as a coach by the Topeka Capital Journal.

While in high school, she competed in basketball and volleyball at St. Mary's HS.

As an administrator, she has extensive tournament management experience, coordinating volleyball and basketball tourneys at the state level in Kansas.



**Terri Lasswell, Head Coach**

On a national level, she co-chairs the National Basketball Academy for the Affiliated National Coaches Counsel, serves on the National Committee of Coaches Advisory Round Table and was a featured speaker on strength and conditioning for the National Coaches Institute for NAGWS in San Francisco in 1988.

Her article, "Is There A Scholarship In Your Athlete's Future?" appeared in the Affiliated National Coaches Counsel Newsletter, Fall 1987 edition.

She was named an Outstanding Young Woman in America (1986) and was initiated in Phi Kappa Phi as a student at KU.

Lasswell holds memberships in the National Association of Girls' and Women's Sports; Women's Basketball Coaching Association; National Strength and Conditioning Association; Kansas Alliance of Health, Physical Education, Recreation and Dance; and the Zonta International Women's Service Organization.

A graduate of St. Mary's (KS) High School, she was born December 17, 1955.



**Holly J. Huso**, an Aneta, ND, native, was named assistant women's basketball coach at the University of Northern Iowa May 5, 1989.

Huso will be responsible for coordinating recruiting, scouting opponents, on-court coaching, directing summer basketball camps and supervising Panther athletes under head coach Terri Lasswell.



A two-year graduate assistant on Kay Yow's staff at North Carolina State University, she received her master's degree in Higher Education this past August.

As a Wolfpack assistant, she was involved in recruiting, preseason conditioning, on-court coaching, athlete supervision during out-of-town contests, statistical maintenance, and the execution of administrative and coaching tasks under Yow.

During the 1988 U.S. Olympic Women's Basketball Trials on the campus of NCSU, she assisted in preliminary site set-up and organization. She also served as a court coach at the South Olympic Festival Trials in Lexington, KY, executing daily drills and scrimmages.

In addition, Huso was an administrative assistant at Yow's 1987 and 1988 Summer Basketball Camps for girls ages eight to 17. Aside from coaching responsibilities, she planned and executed camp promotions and served on research and development projects.

Huso received her bachelor's degree in Physical Education from North Dakota State University (1986) where she was named the school's Outstanding Student in Physical Education. The Bison were Division II women's basketball finalists her senior year.

As a student, Huso compiled a 3.57 grade-point average at NDSU, was listed in Who's Who Among Students in American Colleges and Universities, and was the recipient of the E.E. Kaiser Student Excellence Award for physical education seniors (1985-86).

She also served one season (1986-87) as head girls' varsity basketball coach at Audubon (MN) High School where she turned a 3-15 team into a conference titlist.

While at NDSU, Huso was assistant varsity track and field coach at Shanley (ND) High School in Fargo; coached the Bison girls' basketball camp for athletes 12 to 17 years of age; and was a Nautilus fitness specialist and Universal strength training instructor at the Fargo-Moorhead Family YMCA.

She was born January 16, 1964.

**Cynthia L. Johnson** was named Program Assistant for women's basketball August 28, 1989, by head coach Terri Lasswell.

A native of Indianola, IA, she received her master's degree in Physical Education at Central Missouri State University (1988).

Johnson will be responsible for team strength and conditioning, overseeing players' academic progress, team travel, and on-court coaching.

She received a bachelor's degree in Physical Education at the University of Iowa (1981) and an Iowa Teaching and Coaching Certificate with a health minor (1983).

She passed the National Strength and Conditioning



Association certifying exam and became a Certified Strength and Conditioning Specialist last year.

Johnson was a member of the Hawkeye women's basketball team (1977-81) and was selected the team's Most Valuable Reserve player for the 1978-79 season. She participated in basketball, softball, track and cross country (1974-77) at Indianola High School.

Her coaching experience includes serving as assistant women's basketball and softball coach at Tarkio College in Tarkio, MO, this past year. She also was the school's assistant sports information director.

Her first collegiate coaching experience came as a graduate assistant softball coach at CMSU (1986-88). She served a dual role as softball coach and freshmen women's basketball coach at Johnston (IA) High School two seasons (1984-86).

During her tenure at Iowa, she instructed girls ages 10-18 at the C. Vivian Stringer Basketball Camp (1984 and 1989) and was on the staff of the University's Summer Sports Schools (1979-81 and 1983).

A member of the Women's Basketball Coaches Association for the past two seasons, she also holds membership in the National Strength and Conditioning Association.

Johnson's master's thesis was presented at the Missouri Academy of Science in Kirksville, MO, and was awarded second place in the Graduate Student Research Paper Competition.

She was born November 28, 1958.

**Annette M. Gonzales** will serve as Graduate Assistant Coach this year.

A native of Garden City, KS, and 1984 graduate of Garden City High School, she received a dual bachelor's degree in Education and Leisure Management at Missouri Western State College (1989). She has a Teaching Certificate for grades K-12 in physical education and health.



Gonzales was a student teacher at East Buchanan Middle School in Easton, MO, and received training in student teaching at Parkway Elementary School and Robidoux Middle School in St. Joseph, MO.

Her coaching experience includes serving as YMCA basketball and softball coordinator and coach in St. Joseph, fifth grade basketball coach at Parkway Elementary School and freshmen girls' volleyball coach at Benton High School in St. Joseph.

A basketball and softball scholarship student at MWSC, she was named the Lady Griffon Most Improved Softball Player in 1988. A Dean's List student, she also was a Mexican-American College Scholarship recipient (1984-88).

A member of the American Alliance of Health, Physical Education, Recreation and Dance; she was chosen as a student delegate at the organization's 1989 National Convention.

She is an affiliated member of the National Association for Girls and Women in Sport and the National Association of Sports and Physical Education. On a state level, she was a student representative for the Missouri Alliance of HPER&D.



# Supporting Cast

Kris Huffman will be serving as a student assistant coach this season after playing four seasons (1985-89) as a guard with the Panther women's basketball team.

A Fort Dodge, IA, native, she is a senior majoring in Community Health Education and has been a Dean's List student seven semesters.

Huffman holds Panther records as having the best free throw percentage (.817) and most assists (322) in team history. She made 188 of 230 shots from the free throw line.

She collected 1,294 points in 104 games played, placing her third on the all-time scoring list. She also holds career records for most rebounds, 475 (sixth); field goals made, 539 (fourth); field goals attempted, 1,173 (third); field goal percentage, .460 (ninth); free throws attempted, 230 (ninth); and free throws made, 188 (fourth).

As a co-captain last year, she was the team's second leading scorer and rebounder, averaging 13.2 points and 5.3 rebounds per game, respectively. She set records for best free throw percentage (.881), making 52 of 59 attempts; and best three-point field goal percentage (.528), netting 19 of 36 three-point bombs.

Huffman had a career-high 30 points against Drake as a freshman and pocketed a team record 107 assists that same year (1985-86). She earned all-Gateway Conference honors in 1987.

During her summers, she served as a basketball camp coach at Fort Dodge Senior High School (1984-89), Denison High School (1985-87), and Iowa Central Community College (1984-89). She also was an umpire-coach in youth softball in Fort Dodge and served as a YMCA Basketball Camp Director there in 1986.

As a high school student, she was a State of Iowa Scholar (1985), member of the National Honor Society (1984-85), and was honored with a Business and



Assisting the coaching staff this season are: Kris Huffman, student assistant coach (forefront); and Cami Rolinger, volunteer coach.

Professional Women's Award (1985) and Iowa State Bar Association Citizenship Award (1985).

Her prep athletic achievements and honors include being named to the Converse Basketball All-America Top 10 Team and Academic All-America Team in 1985, being named Miss Iowa Basketball (1985), and earning all-state recognition in basketball, volleyball and softball (1984-85).

Born April 3, 1967, she is pursuing a career in corporate fitness.

**Cami M. Rolinger** was named volunteer assistant for the women's basketball team this past summer. She will concentrate her efforts in alumni and public relations.

A Cedar Falls, IA, native and 1985 graduate of Cedar Falls High School, Rolinger received her bachelor's degree in Physical Education with a coaching and fitness emphasis at UNI (1989).

She lettered one year (1986) with the Panther women's basketball squad and was a member of the P.E. Club.

A Dean's List student, she served as a UNI Student Ambassador (1985-87) and UNI Student Hostess to entrepreneur Allan Paulson.

During her years at Cedar Falls High School, she lettered in basketball (1983-85), cross country (1982-85) and track (1983-84). She also was a Future Teacher Scholarship recipient and was presented the Presidential Academic Fitness Award.

Rolinger has served as an Aerobic exercise instructor for Health & Fitness Consultants the past three years and is a part-time staff member for Sartori Hospital's Wellness Program.

Her coaching experience includes serving as girls' track coach at New Hartford (IA) Junior High School (1989) and sophomore girls' basketball coach at Cedar Falls High School (1987-89).

Last year, she was secretary of UNI's Wrestling Camp and an Aerobic exercise instructor at the University's Summer Sports Camp. She also worked as Camp Coordinator at the Cedar Falls Girls' Basketball Camp and coach at the University of Iowa's Girls' Basketball Camp.



Pictured are the Panther women's basketball team support staff: Seated (l to r): Rene Revis, assistant trainer and Karla Halter, student assistant trainer. Standing (l to r): Lynne Short, manager and Dianne Peelen, manager.



# The Director's Script

## *Lasswell's Preseason Comments*

### **Preseason Outlook**

Whenever a new staff takes over, it brings a certain amount of enthusiasm with it. It's a positive influence on the program.

We have a lot of teaching to do with our new system and how quickly the players learn it will determine the season outcome. We want to keep things basic at first to gain confidence and build on that.

Our young ladies are eager to improve and have a good understanding of what it will take. I believe they are ready to make the necessary sacrifices.

### **Coaching Philosophy**

We hope to instill a playing philosophy the team is comfortable with and one that will help bring the players success both on and off the court. Our priority is their education...academics come first.

### **Coaching Staff**

We've put together an eager, hard-working staff that typifies our entire team. They want to see us become a power in the Gateway Conference. Their motivation and commitment have given us all confidence and a great deal to be proud of this season.

### **Strengths as a Coach**

I'm a people person and I enjoy watching young people achieve their goals. I believe in a well-rounded athlete and I think I can bring out the best in a player.

I really care about my players. I want them to leave Northern Iowa with a degree and a multitude of positive experiences.

### **Recruiting Class**

Overall, we are in an organizing process. We are emphasizing recruiting — especially in-state. Our goal is to be highly competitive on the recruiting trail with other institutions in Iowa.

Our staff has worked hard and made a lot of contacts. I feel the two young ladies (Katie McFadden and Julie Street) we signed in April are strong additions and we hope to add several others this year.

### **Strength and Conditioning**

Our program under Coach Cindy Johnson has proven to be an asset already. Our players are healthy and ready to play with a new-found confidence. They believe in what they can do, both mentally and physically.

### **Team Characteristics**

We feel our conditioning program will increase our team speed and quickness. Because of a lack of size up front due to graduation, we have to make it up in terms of speed.

And the fact that we're stronger should help our rebounding. We'll have to rebound if we're going to use an up-tempo style of play. So, we'll spend a great deal of time on that aspect of the game.

### **Offensive Strategies**

It's important to identify our strengths offensively, and build our strategies around those characteristics. I like to push the ball up the floor and most fans want to see an up-tempo style of play. We'll use what best fits our talent and whatever style brings us success.

### **Defensive Strategies**

The bottom line is hard work. We'll use a variety of defenses ranging from full-court pressure to a two-three zone. Our preference is to play as much man-to-man as possible, dependent upon our opponent. We want to force their offense to adjust to our defense and we plan to do that with constant pressure on the ball. We want to take them out of their rhythm.

### **Team Morale**

If we can carry over the positive feelings and team unity from the preseason into this year's schedule, I'll be very happy. I'm proud that our young ladies have wiped the slate clean. They're ready to meet the challenges of a new program.

### **Leadership**

We have a variety of leaders — some lead by example, others by work ethic and some with direction in a verbal sense. I think the biggest key is that we're in this together and the leadership will follow from the team's unity.

### **Opponents at a Glance**

The conference as a whole is very strong. As in most leagues, there are always three or four teams that seem to do well and I'm sure those same teams will be picked to contend for the title.

But I think every conference game will be competitive and the road to the top will be rough for everyone. There won't be any easy games and I think we'll see some new faces in the top half of the league this season.

### **Rebuilding the Program**

We have an immediate goal of finishing in the top half of the Gateway this season. But, generally, we want to be in every game and go to the wire in a competitive sense.

Everyone's long-term goal is to win a conference championship. And I want my players to experience what it's like to be in the NCAA tournament. But one of our primary goals is to learn how to win. And to accomplish that, we need to win smaller battles along the way.

I feel strongly that there are four keys to running a successful program: academic strength, aggressive recruiting, aggressive play on the court, and good scheduling. I believe we can instill all four and, with hard work, turn things around for Panther women's basketball.



# Cast of Players

## Alphabetical Roster

No	Name	Pos	Ht	Yr	Hometown/High School
12	Karen Amrhein	G	5-4	So	Milwaukee, WI/Pius XI
10	Jill Jameson	G	5-10	So	North Vernon, IN/Jennings Co.
14	Molly Kelly	G	5-6	Sr	Oshkosh, WI/Lourdes Academy
30	Kathy Kolstedt	F	5-11	Jr	Racine, WI/Horlick
44	Katie McFadden	P	6-1	Fr	Marshalltown, IA/Marshalltown
20	Loretha Mosley	G	5-9	Jr	Fort Dodge, IA/Fort Dodge
34	Nicki Rohde	F	5-9	Sr	Des Moines, IA/Hoover
52	Deanna Samuelson	F	5-11	So	Pocahontas, IA/Pocahontas
24	Linda Steiner	F	5-11	Fr	Niles, IL/West
32	Julie Street	F	5-11	Fr	Norwalk, IA/Norwalk
42	Rhonda Wiebold	F	5-10	Sr	Amana, IA/Amana

## Numerical Roster

No	Name	Pos	Ht	Yr	Hometown/High School
10	Jill Jameson	G	5-10	So	North Vernon, IN/Jennings Co.
12	Karen Amrhein	G	5-4	So	Milwaukee, WI/Pius XI
14	Molly Kelly	G	5-6	Sr	Oshkosh, WI/Lourdes Academy
20	Loretha Mosley	G	5-9	Jr	Fort Dodge, IA/Fort Dodge
24	Linda Steiner	F	5-11	Fr	Niles, IL/West
30	Kathy Kolstedt	F	5-11	Jr	Racine, WI/Horlick
32	Julie Street	F	5-11	Fr	Norwalk, IA/Norwalk
34	Nicki Rohde	F	5-9	Sr	Des Moines, IA/Hoover
42	Rhonda Wiebold	F	5-10	Sr	Amana, IA/Amana
44	Katie McFadden	P	6-1	Fr	Marshalltown, IA/Marshalltown
52	Deanna Samuelson	F	5-11	So	Pocahontas, IA/Pocahontas

## Squad Breakdown

### State

Iowa (6)  
Wisconsin (3)  
Indiana (1)  
Illinois (1)

### Class

Freshmen (3)  
Sophomores (3)  
Juniors (2)  
Seniors (3)

### Position

Guards (4)  
Forwards (6)  
Posts (1)

## How Ya Say 'Em

Karen Amrhein	(AM rein)
Holly Huso	(HU so)
Terri Lasswell	(LASS well)
Kathy Kolstedt	(KOL stet)
Loretha Mosley	(MOSE lee)
Nicki Rohde	(ROW dee)
Rhonda Wiebold	(WEE bold)





# Leading Roles

## Loretha Mosley, 5-9, Junior, Guard, Fort Dodge, IA

**Last Season:** Was the team's fourth leading scorer (247) and rebounder (102) in 25 games played. Led team in assists with 117 and steals with 56 and blocked nine shots. Average 9.9 points and 4.1 rebounds per game. Played guard and small forward. Known to her teammates as "Mose."

**College Career:** Has netted 450 points, 180 rebounds and 198 assists in two seasons with the Panthers and has played in every contest to date. Became a starter midway through the 1987-88 season. Shot 46.7 percent from the field and 52.4 percent from the free throw line as a freshman and led the team in steals with 63. Chosen to participate in 1988 U.S. Olympic Sports Festival.

**High School:** An All-America Honorable Mention player at Fort Dodge (IA) High School. Career stats include fourth leading scorer in state, third in steals and second in assists as a senior. Twice named to all-state second team (1986 and 1987) and all-conference first team. Played in 1987 All-Star Game and selected to Amateur Athletic Union (AAU) All-Iowa Pride Team. Also competed four years in track. All-state honors in long jump (178.5) and 200-yard dash (25.2), setting school records in both events.

**Academic:** Majoring in Psychology.

**Personal:** Parents are Edward and Lorine Mosley of Fort Dodge, IA. Enjoys writing poems, dancing and listening to music. Personal ambition to "continue to have Christ in my life, enabling me to be the best I can be."

**Birth Date:** April 21, 1969.

**Coach's Comments:** "Loretha is an outstanding athlete. She's extremely quick and has good speed. She sees the court very well and is an excellent penetrator. At the same time, she is very team oriented and unselfish — capable of driving and dumping off easily. She's in great condition and will see a lot of time at the point guard and off-guard positions. She started in 23 of 25 games last season as a sophomore and improved on her outside shot during the off-season."



### Career Statistics

Season	G	Pts.	Reb.	Ass.	Blk.	Stl.
1987-88	25	203	78	81	2	63
1988-89	25	247	102	117	9	56
Totals	50	450	180	198	11	119

## Nicki Rohde, 5-9, Senior, Forward, Des Moines, IA

**Last Season:** Team's fifth leading scorer with 158 points in 25 games played. Was third in rebounds with 111 and had 47 assists and 42 steals. Shot 72.1 percent from the free throw line.

**College Career:** Has seen action in every game during her three-year career with the Panthers and has netted 584 points, 329 rebounds and 163 assists. Career-high scoring game came against Indiana State during 1986-87 season when she collected a team-high 29 points.

**High School:** Earned three letters in basketball at Hoover High School in Des Moines. Played in the Iowa All-Star Game. Earned all-state and all-conference honors. Also lettered four years in track, three years in volleyball and one year in softball. Named to all-state and all-conference teams in volleyball and was three-time all-state selection in track.

**Academic:** Majoring in Physical Education with a minor in Health. Named to all-conference academic team in Gateway Collegiate Athletic Conference last season.

**Personal:** Parents are Tony and Linda Rohde of Des Moines, IA.

**Birth Date:** July 4, 1968.

**Coach's Comments:** "Nicki's strength is her experience. She was a starter in every game last season. She's physically and mentally tough, which is typified by her 5-9 frame at the small forward position. She's a strong rebounder and has great insight. She knows where to be and when to be there."



### Career Statistics

Season	G	Pts.	Reb.	Ass.	Blk.	Stl.
1986-87	26	258	111	57	2	35
1987-88	26	168	107	62	2	37
1988-89	25	158	111	47	2	42
Totals	77	584	329	166	6	114



# Rising Stars

---

## Karen Amrhein, 5-4, Sophomore, Guard, Milwaukee, WI

---

**Last Season:** Earned first letter as a freshman. Collected 34 points, 18 rebounds, 29 assists and eight steals in 21 games. Shot 72.7 percent from the free throw line.

**High School:** Lettered three years in basketball at Pius XI High School in Milwaukee, WI. Team was conference and state champion all four seasons she played. Selected to participate in Easter Seals All-Star Game and Wisconsin Basketball Coaches Association All-Star Game. Named all-area and all-conference her senior year and selected to all-state tournament squad. Also an all-conference softball player.

**Academic:** Major is Social Work.

**Personal:** Daughter of Chuck and Kathy Amrhein of Lexington, TN. Enjoys going to movies and listening to music. Chief ambition is to "be happy and successful and one day own a day care center."

**Birth Date:** July 30, 1970.

**Coach's Comments:** "Karen was plagued by injury last season, but saw action in 21 games. She could relieve pressure at the point guard position."



### Career Statistics

Season	G	Pts.	Reb.	Ass.	Blk.	Stl.
1988-89	21	34	18	29	0	8

## Jill Jameson, 5-10, Sophomore, Guard, North Vernon, IN

---

**Last Season:** Collected 149 points and 51 rebounds in 25 games played. Also notched 23 assists and 16 blocked shots. Shot 47.8 percent from the floor and 82.6 percent from the free throw line.

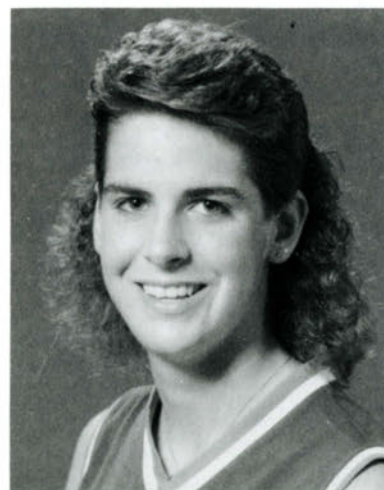
**High School:** Lettered four years in basketball at Jennings (IN) County High School. Team recorded 19-3 slate her senior year and finished as sectional champion and regional runner-up. Selected to Eastern Indiana All-Star Team. Named to all-conference and all-sectional squads four straight years. Was three-time all-area player and two-time team MVP. All-area Player-of-the-Year and all-state honorable mention her senior season. Also lettered in volleyball and was three-time all-conference player and all-state selection as a senior. Earned all-conference honors in tennis.

**Academic:** Majoring in Physical Education and Business Communications.

**Personal:** Daughter of John and Joyce Jameson of North Venron, IN. Enjoys swimming, tennis, biking and eating. Main ambition to "become a collegiate head basketball coach."

**Birth Date:** July 2, 1970.

**Coach's Comments:** "Jill is in excellent physical condition. She's a driven player. Her desire, coupled with her skill, will allow her to be in the lineup consistently, possibly in a starting position."



### Career Statistics

Season	G	Pts.	Reb.	Ass.	Blk.	Stl.
1988-89	25	149	51	23	0	16



## Molly Kelly, 5-6, Senior, Guard, Oshkosh, WI

**Last Season:** Saw action in all 25 games, collecting 85 points, 21 rebounds, 41 assists and 18 steals. Shot 69.2 percent from the free throw line.

**College Career:** A three-year letterwinner at UNI, she played in eight games as a freshman, scoring 14 points and grabbing 11 rebounds after suffering a knee injury during a preseason game. Saw action in 26 contests her sophomore season, netting 162 points, 49 rebounds and 74 assists.

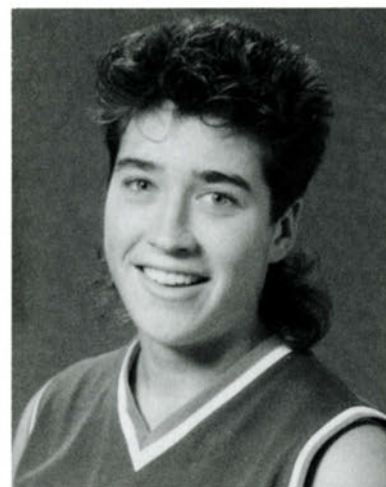
**High School:** Lettered four years in basketball at Lourdes Academy. Was selected co-Player-of-the-Year as a senior. Named to all-conference first team her final two seasons after being a second team selection as a sophomore. Also lettered four years in softball, twice in soccer and once in cross country. Gained all-conference first team honors in softball as a senior.

**Academic:** Majoring in Chemistry.

**Personal:** Daughter of Tom and Jean Kelly of Oshkosh. Enjoys participating in all sports and running. Long term goal is to "pursue a career in medicine."

**Birth Date:** April 26, 1968.

**Coach's Comments:** "Molly's experienced, having played in all 25 games last season and starting in seven. She leads by example and works extremely hard. We need that experience and leadership for our younger players."



### Career Statistics

Season	G	Pts.	Reb.	Ast.	Blk.	Stl.
1986-87	8	14	11	11	0	4
1987-88	26	162	49	74	3	25
1988-89	25	85	21	41	0	18
Totals	59	261	81	126	3	47

## Kathy Kolstedt, 5-11, Junior, Forward, Racine, WI

**Last Season:** Saw action in 17 games as a reserve player, scoring 16 points in earning her first letter. Averaged 0.9 points and 1.7 rebounds per contest. Also had four assists, six blocked shots and seven steals.

**College Career:** Played in 10 games as a freshman, scoring nine points. Also collected three assists and 10 rebounds.

**High School:** Earned three letters in basketball at Horlick (WI) High School. Team advanced to state tournament in 1986 and 1987, winning conference championships those two seasons, as well as in 1985. Named all-conference as a senior. Also lettered three years in softball and one year in diving. Named all-conference and all-county as center fielder in softball in 1986.

**Academic:** Majoring in Art.

**Personal:** Parents are Donald and Sharron Kolstedt of Racine, WI. Enjoys drawing and playing all sports.

**Birth Date:** May 8, 1969.

**Coach's Comments:** "Kathy comes from a very good high school program and is an excellent student. She has flexibility because she handles the ball very well at 6-0 and trained very hard over the summer. She'll probably see action at the small forward and power forward positions."



### Career Statistics

Season	G	Pts.	Reb.	Ast.	Blk.	Stl.
1987-88	10	9	10	3	0	2
1988-89	17	16	28	4	6	7
Totals	27	25	38	7	6	9



## Deanna Samuelson, 5-11, Sophomore, Forward, Pocahontas, IA

**Last Season:** Saw limited action, playing in four games. Had two points from free throw line and five rebounds enroute to earning her first letter.

**High School:** Lettered three seasons in basketball and volleyball and two years in golf at Davenport (IA) West High School. Also participated in 1987 Amateur Athletic Union (AAU) tournament in Cedar Rapids, IA, as an all-star for the Mississippi Athletic Conference.

**Academic:** Majoring in Physical Education.

**Personal:** Daughter of Lowell and Rita Samuelson of Pocahontas, IA. Enjoys playing all sports and camping.

**Birth Date:** May 24, 1969.

**Coach's Comments:** "Deanna is a walk-on player who has experience with the program as a squad member last season. She's working hard to get in shape and will contribute as a role player."



### Career Statistics

Season	G	Pts.	Reb.	Ast.	Blk.	Stl.
1988-89	4	2	5	0	0	0

## Linda Steiner, 5-11, Freshman, Forward, Niles, IL

**Last Season:** Medical redshirt.

**High School:** A four-time letterwinner at Niles (IL) West High School. Named all-conference and team MVP three seasons. Led team to 23-4 mark and regional playoff berth her senior year. Averaged 12 points and six rebounds per game. Earned four letters in softball. Was three-time all-conference player and named team MVP as a senior. Lettered one year in volleyball.

**Academic:** Pre-Physical Therapy major in Biology.

**Personal:** Daughter of Jim and Norma Steiner of Niles, IL. Enjoys fishing, reading and golf. Chief ambition to have success as described in poem "This is Success" by R.W. Emerson.

**Coach's Comments:** "Linda is coming off a medical redshirt year. She's team oriented and highly motivated. Right now, she's just trying to find her niche."



## Rhonda Wiebold, 5-10, Senior, Forward, Amana, IA

**Last Season:** Saw limited action in four games. Collected one point, one rebound and one steal prior to suffering a knee injury.

**College Career:** Has earned three letters with the Panthers. Career totals include 29 games played, 19 points, 15 rebounds and five assists. Averaged 0.9 points and 0.7 rebounds as a sophomore in 18 games played.

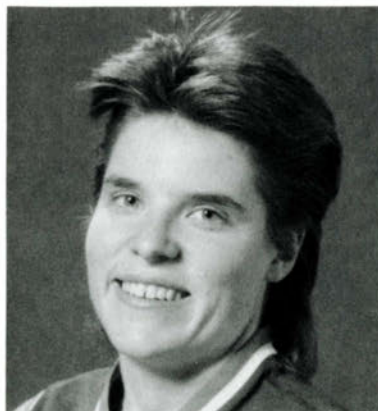
**High School:** Earned four letters in basketball at Amana (IA) Community School. Was an all-conference selection two years and named team MVP three times. Awarded Athlete-of-the-Year honors. Also lettered four years in softball and track. A three-year all-conference utility player in softball.

**Academic:** Majoring in Accounting.

**Personal:** Parents are Wayne and Kathy Wiebold of Amana, IA. Spends spare time reading and enjoys photography.

**Birth Date:** November 17, 1967.

**Coach's Comments:** "Rhonda's work ethic is beyond approach. She leads by example. But, she had reconstructive surgery on her knee last season and will probably not see action until January, dependent upon her progress."



### Career Statistics

Season	G	Pts.	Reb.	Ast.	Blk.	Stl.
1986-87	7	4	2	2	0	1
1987-88	18	14	12	3	0	2
1988-89	4	1	1	0	0	1
Totals	29	19	15	5	0	4



# Incoming Talent

---

## Katie McFadden, 6-1, Freshman, Post, Marshalltown, IA

---

**High School:** Two-time letterwinner in basketball at Marshalltown (IA) High School where she captained the squad her senior season. Earned first-team all-conference honors two years and played in 1989 All-Star Game in Cedar Rapids, IA. Also lettered three times in track and twice in volleyball.

**Academic:** Majoring in Biology.

**Personal:** Daughter of Phil and Pat McFadden. Enjoys reading.

**Birth Date:** December 29, 1971.

**Coach's Comments:** "Katie is an all-around athlete. She's the closest we have to a true post player. Her test will be the physical demand of the conference. We're going to take it slow with Katie until she learns the system and feels comfortable with it."



## Julie Street, 5-11, Freshman, Forward, Norwalk, IA

---

**High School:** A four-year letterwinner in basketball at Norwalk (IA) High School where she was named team MVP three straight years. Earned all-state third team honors and was all-conference, all-district and all-county selection. Averaged 42 points and five rebounds per game. Also lettered in softball four times, twice each in volleyball and track.

**Academic:** Pre-Physical Therapy major in Biology.

**Personal:** Parents are Jerry and Linda Street. Enjoys all sports. Chief ambition is "to improve as much as I can."

**Birth Date:** March 14, 1971.

**Coach's Comments:** "Julie's an extremely aggressive player. A six-on-six player in high school, she knows how to drive to the bucket and she's very competitive. She just needs time to grow as a player."



Women's Basketball



# 1988-89 Season in Review

A quick glance at the 7-18 record of the 1988-89 season might indicate a lack of talent. That was not the case at all. Instead, a host of injuries to key personnel and a tough schedule greatly contributed to a disappointing season.

Head Coach Kimberly Mayden, in her fifth and final season at the Panther helm, saw point guards Loretha Mosley and Karen Amrhein go down to injury before the season even started. Then three forwards — Linda Steiner, Rhonda Wiebold and Kathy Kolstedt — suffered injuries. Steiner and Wiebold would not return to the line-up.

UNI opened the ledger on the road losing four straight games. After returning home, the Panthers notched their first victory of the season over Marquette, 68-61, followed with a win over Illinois at Chicago, 65-55.

In Gateway Collegiate Athletic Conference action, UNI split with its first two opponents, bowing to Southwest Missouri State prior to defeating Wichita State.

However, things suddenly got rough and tumble for the squad enroute to a 4-14 conference mark. UNI lost eight of nine games, including three in the friendly confines of the UNI-Dome, managing only to beat an undermanned Chicago State squad, 95-37.

The Panthers then rose to the occasion with an unexpected 91-81 victory over Eastern Illinois, a team that would eventually finish fourth in the Gateway. Mosley, a sophomore, returned to the lineup and notched 23 points, six boards and six assists, while three of her teammates recorded double figures.

Seniors Cindy Harms (14.4), Kris Huffman (13.2) and Sandy Grabowski (11.8) led the Panthers in scoring throughout the season, averaging double-digit points per game from the front line when the final statistics were tallied. Grabowski placed 10th in conference rebounding, averaging seven boards per game.

Huffman had another consistent year for UNI. She shot 46 percent from the field and 52 percent from three-point range, a league-leading mark. Her 88.1 percent free throw percentage also led the Gateway and placed her atop the UNI all-time list.

Harms struggled early in the year, but began picking up ground midway through the season. She collected 28 points in just 25 minutes of play against Chicago State, a season-high mark. She scored over 20 points in six contests throughout the ledger, leading all Panther players.

Another player saw her final season in a Panther uniform, as well. Chris Shafer netted 22 points, 32 rebounds and three assists in 17 games as a role player.

Mosley (247), junior forward Nicki Rhode (158), freshman guard Jill Jameson (149) and junior guard Molly Kelly (85) each contributed to the UNI scoring attack and are expected to lead this year's version of the Panther squad.



## Panthers Set Records in 1988-89

### Individual Season:

Free Throw Pct. (50 Attempts): Kris Huffman, .881 (52 of 59)

Three-point Field Goals Pct.: Kris Huffman, .528 (19 of 36)

Assists: Loretha Mosley, 117

Assist Ave.: Loretha Mosley, 4.7

### Team Season:

Three-point Field Goals Made: 59

Three-point Field Goal Attempts: 149

Three-point Field Goal Pct.: 39.6

### Team Single Game:

Margin of Victory: 58 (vs. Chicago State, 95-37)

Three-point Field Goals Made: (Tie) 7 (vs. Western Illinois)

Three-point Field Goal Attempts: 15 (vs. Drake)



# 1988-89 Game-By-Game Summary

Game#	Opponent	Score	Attend	Loc	High Scorer	High Rebounder	Opp Hi Scorer	Opp Hi Rebounder
1	St. Louis	42-67 L	100	A	Huffman, 16	Mosley, 7	Hacker, 19	Purvis, 9
2	Arkansas State	73-89 L	278	A	Harms, 23	Huffman, 9	Brehe, 22	Hayes, 10
3	§Wisconsin-Green Bay	54-80 L	240	A	Grabowski, 14	Rohde, 5	Kupper; Green, 12	Kupper, 7
4	§Colorado State	56-60 L	100	N	Harms; Mosley, 13	Grabowski, 9	Johnson, 12	Schaidt, 8
5	Marquette	68-61 W	123	H	Grabowski, 17	Grabowski, 14	Christianson, 16	Schweiger, 10
6	Illinois at Chicago	65-55 W	106	H	Harms, 22	Mosley, 10	Gilbert, 12	Hughes, 9
7	*SW Missouri State	62-73 L	100	H	Huffman, 17	Grabowski, 13	Nelson, 15	Rapier, 13
8	*Wichita State	84-77 W	75	H	Grabowski, 18	Grabowski, 6	Hund, 22	Hund, 8
9	*Eastern Illinois	59-69 L	212	A	Mosley, 14	Grabowski, 11	Bonsett, 15	Friedrich, 11
10	*Southern Illinois	43-56 L	1000	A	Harms, 17	G'bowski, Shafer 4	Kaapwerth, 14	Fitzpatrick, 10
11	*Indiana State	67-72 L	225	H	Grabowski, 15	G'ski; H'man, 10	Vanderkolk, 19	Vanderkolk, 14
12	*Illinois State	68-93 L	230	H	Huffman, 17	Huffman, 7	Govan, 20	Tanner, 8
13	Chicago State	95-37 W	420	H	Harms, 28	Grabowski, 10	V. Harris, 8	S. Harris, 10
14	*Drake	72-108 L	563	A	Harms, 22	Harms, 10	Fitzpatrick, 22	Maison, 7
15	*Bradley	57-60 L	350	A	Grabowski, 16	Grabowski, 14	Yerkes, 14	Wancket, 16
16	*Western Illinois	83-101 L	187	A	Harms, 25	Grabowski, Rohde 7	Diask, 31	Many with 5
17	*Southern Illinois	59-79 L	100	H	Jameson, 14	Rohde, 9	Rakers, 17	Rkrs, K'nerth, 9
18	*Eastern Illinois	91-81 W	664	H	Mosley, 25	Grabowski, 13	Williams, 22	Williams, 13
19	*Illinois State	65-83 L	561	A	Harms, H'man, 18	Rohde, 8	Robinson, 21	Ferrell, Govan, 8
20	*Indiana State	67-75 L	293	A	Huffman, 23	Grabowski, 10	Lein, 27	Lein, Cas'tr, 8
21	*Drake	61-70 L	246	H	Huffman, 21	Grabowski, 10	Fitzgerald, 22	Jensen, 10
22	*Western Illinois	77-86 L	130	H	Harms, 20	Rohde, Grab'ski, 8	Aicher, 17	Aicher, 9
23	*Bradley	76-62 W	1762	H	Grabowski, 21	Mosley, Huffman, 8	Yerkes, 15	Nicholls, 12
24	*Wichita State	83-78 W	200	A	Harms, 19	Mosley, 8	Hund, 27	Hund, 12
25	*SW Missouri State	64-69 L	535	A	H'man, Mosley 15	Rohde, 8	Rapier, 20	Rapier, 14

\*Gateway

§Green Bay Tournament





# 1988-89 Game-By-Game Results

GAME	FGM-FGA	3PTM-3PTA	FTM-FTA	REB	PF-DQ	PTS	AST	TO	BS	ST
Northern Iowa 42	18-56	0-3	6-9	33	25-1	19-23	15	23	2	11
SAINT LOUIS 67	22-60	0-2	23-31	54	13-0	35-32	15	17	0	12
Northern Iowa 73	27-58	3-5	16-24	34	25-2	32-41	14	31	0	7
ARKANSAS ST. 89	33-71	3-3	20-26	44	20-0	34-55	20	24	2	16
Northern Iowa 54	22-47	1-3	9-11	27	13-0	30-24	10	32	2	7
WISC.-GREEN BAY 80	34-62	0-0	12-14	28	14-0	40-40	24	19	7	13
Northern Iowa 56	21-48	0-3	14-27	28	16-0	24-32	6	15	2	9
Colorado St. 60	27-54	1-3	5-6	32	24-1	26-34	20	22	2	11
NORTHERN IOWA 68	24-68	2-8	18-24	39	11-1	36-32	11	13	3	22
Marquette 61	28-64	0-3	5-9	49	16-0	33-28	11	29	10	5
NORTHERN IOWA 65	26-53	1-2	12-16	37	19-1	29-36	18	29	2	11
Ill. at Chicago 55	24-62	0-7	7-18	37	18-0	26-29	12	32	1	11
NORTHERN IOWA 62	25-67	2-8	10-15	29	17-0	34-28	8	14	2	8
SW Missouri St 73	29-54	0-1	15-20	37	15-0	36-37	12	26	4	5
NORTHERN IOWA 84	36-61	3-3	9-18	24	20-0	44-40	19	17	5	15
Wichita St. 77	25-59	5-20	22-30	42	17-1	40-37	15	25	1	8
Northern Iowa 59	26-52	0-1	7-9	30	12-0	25-34	16	24	0	12
EASTERN ILLINOIS 69	30-58	4-8	5-14	31	12-0	33-36	22	21	0	8
Northern Iowa 43	15-42	3-3	10-13	26	16-0	20-23	9	28	0	8
SOUTHERN ILL. 56	26-59	1-1	3-9	40	13-0	19-37	15	20	7	13
NORTHERN IOWA 67	25-61	2-6	15-19	38	27-2	32-35	10	27	3	17
Indiana State 72	22-64	1-3	27-35	49	19-0	33-39	12	23	0	14
NORTHERN IOWA 68	26-64	1-3	15-18	31	19-0	33-35	11	18	4	11
Illinois St. 93	38-71	2-7	15-23	46	14-0	47-46	19	14	4	9
NORTHERN IOWA 95	38-76	3-7	16-19	50	18-0	42-53	21	19	2	15
Chicago State 37	14-55	1-4	8-14	32	19-1	22-15	4	37	5	7
Northern Iowa 72	26-60	1-5	19-25	33	17-0	33-41	12	17	4	6
DRAKE 108	43-77	2-2	20-27	42	16-0	54-54	30	12	0	6
Northern Iowa 57	24-65	3-7	6-13	41	18-0	23-34	14	19	1	10
BRADLEY 60	24-59	2-6	10-19	45	16-0	29-31	17	22	5	11
Northern Iowa 83	30-65	7-14	16-23	32	18-1	44-39	13	23	0	10
WESTERN ILL. 101	40-71	5-11	16-18	35	21-0	47-54	30	14	0	9
NORTHERN IOWA 59	25-63	1-3	8-9	22	15-2	25-34	9	11	0	10
Southern Ill. 79	31-55	1-3	16-20	41	13-0	35-44	16	17	0	3
NORTHERN IOWA 91	34-60	4-7	19-26	34	17-1	35-56	18	15	1	7
Eastern Ill. 81	31-80	3-13	16-21	50	25-1	37-44	16	20	0	7
Northern Iowa 65	26-63	2-3	11-13	31	11-1	30-35	13	23	2	10
ILLINOIS ST. 83	34-69	3-9	12-14	43	13-0	39-44	17	19	1	13
Northern Iowa 67	31-68	0-3	5-9	39	21-0	29-38	19	25	2	13
INDIANA ST. 75	26-56	3-3	20-27	37	11-0	28-47	19	25	3	13
NORTHERN IOWA 61	22-57	6-15	11-14	36	14-0	31-30	15	24	2	9
Drake 70	28-58	3-7	11-14	32	16-0	35-35	18	18	0	8
NORTHERN IOWA 77	29-71	2-13	17-25	40	32-2	39-38	13	29	1	9
Western Ill. 86	29-61	3-6	25-35	46	19-1	37-49	18	28	0	14
NORTHERN IOWA 76	22-54	1-6	31-37	36	21-1	33-43	9	19	4	11
Bradley 62	24-72	4-20	10-20	55	28-2	28-34	10	18	2	3
Northern Iowa 83	33-71	6-7	11-15	35	24-3	31-52	21	9	6	2
WICHITA STATE 78	29-63	1-9	19-25	46	46-1	38-40	21	16	0	0
Northern Iowa 64	23-56	5-11	13-23	39	30-3	31-33	17	25	1	5
SW MISSOURI ST 69	25-65	0-0	19-32	48	21-1	31-38	18	21	1	10



# Season Highs/Lows

		Northern Iowa	Opponent
Points 1st Half:	High	44 vs Western Illinois	34 by Drake
	Low	19 vs St. Louis	19 by Southern Illinois
Points 2nd Half:	High	56 vs Eastern Illinois	55 by Arkansas State
	Low	23 vs Southern Illinois	15 by Chicago State
Total Points:	High	95 vs Chicago State	108 by Drake
	Low	42 vs St. Louis	37 by Chicago State
Total Field Goals Made:	High	38 vs Chicago State	43 by Drake
	Low	15 vs Southern Illinois	14 by Chicago State
Total Field Goals Att:	High	76 vs Chicago State	80 by Eastern Illinois
	Low	42 vs Southern Illinois	54 by Southwest Missouri St.
Total FG Percentage:	High	.590 vs Wichita State	.564 by Southern Illinois
	Low	.321 vs St. Louis	.255 by Chicago State
3-Pt Field Goals Made:	High	7 vs Western Illinois	5 by Western Illinois
	Low	0 vs Indiana State	0 by Southwest Missouri St.
3-Pt FG Attempted:	High	15 vs Drake	20 by Bradley
	Low	1 vs Eastern Illinois	0 by Southwest Missouri St.
3-Pt FG Percentage:	High	1.000 vs Southern Illinois	1.000 by Indiana State
	Low	.000 vs Indiana State	.000 by Southwest Missouri St.
Free Throws Made:	High	31 vs Bradley	27 by Indiana State
	Low	5 vs Indiana State	3 by Southern Illinois
Free Throws Attempted:	High	37 vs Bradley	35 by Western Illinois
	Low	9 vs Indiana State	6 by Colorado State
Free Throw Percentage:	High	.889 vs Southern Illinois	.889 by Western Illinois
	Low	.462 vs Bradley	.333 by Southern Illinois
Offensive Rebounds:	High	20 vs Chicago State	23 by Eastern Illinois
	Low	4 vs Southern Illinois	4 by Colorado State
Defensive Rebounds:	High	27 vs Southwest Missouri St.	35 by St. Louis
	Low	13 vs Southern Illinois	13 by Wisconsin-Green Bay
Total Rebounds:	High	30 vs Chicago State	35 by Bradley
	Low	22 vs Southern Illinois	28 by Wisconsin-Green Bay
Assists:	High	21 vs Wichita State	30 by Western Illinois
	Low	5 vs Colorado State	4 by Chicago State
Blocked Shots:	High	6 vs Wichita State	10 by Marquette
	Low	6 vs Southern Illinois	0 by Wichita State
Steals:	High	22 vs Marquette	16 by Arkansas State
	Low	2 vs Wichita State	0 by Wichita State
Turnovers:	High	32 vs Wisconsin-Green Bay	37 by Chicago State
	Low	9 vs Wichita State	12 by Drake
Personal Fouls:	High	33 vs Colorado State	28 by Bradley
	Low	11 vs Illinois State	11 by Indiana State



# 1988-89 Final Statistics

PLAYER	G/ GS	/-- TOTAL --/		/-- 3PT --/		FT/ FTA	FT%	PTS	AVG	OFF DEF TOT			PF/ D	AST	TO	BLK	STL	MIN	
		FG/ FGA	FG%	FG/ FGA	FG%					REB	REB	REB							
Cindy Harms	24/ 23	130/ 295	.441	16/ 46	.348	70/ 85	.824	345	14.4	22	69	91	3.8	89/ 5	11	61	13	15	694
Kris Huffman	25/ 19	130/ 280	.464	19/ 36	.528	52/ 59	.881	331	13.2	45	87	132	5.3	82/ 3	51	99	13	48	690
Sandy Grabowski	25/ 25	118/ 229	.515	0/ 0	.000	58/ 94	.617	294	11.8	80	94	174	7.0	94/10	12	72	7	39	725
Loretha Mosley	25/ 23	100/ 252	.397	0/ 2	.000	47/ 85	.553	247	9.9	34	68	102	4.1	64/ 3	117	125	9	56	758
Nicki Rohde	25/ 25	55/ 142	.387	4/ 8	.500	44/ 61	.721	158	6.3	36	75	111	4.4	60/ 1	47	55	2	42	772
Jill Jameson	25/ 0	65/ 136	.478	0/ 1	.000	19/ 23	.826	149	6.0	20	31	51	2.0	25/ 0	23	24	0	16	425
Molly Kelly	25/ 7	28/ 92	.304	20/ 56	.357	9/ 13	.692	85	3.4	4	17	21	0.8	30/ 0	41	44	0	18	427
Karen Amrhein	21/ 1	13/ 36	.361	0/ 0	.000	8/ 11	.727	34	1.6	3	15	18	0.9	11/ 0	29	29	0	8	198
Linda Steiner	4/ 0	2/ 6	.333	0/ 0	.000	2/ 4	.500	6	1.5	1	5	6	1.5	3/ 0	2	4	0	0	28
Chris Shafer	17/ 2	9/ 17	.529	0/ 0	.000	4/ 4	1.000	22	1.3	11	21	32	1.9	15/ 0	3	9	1	5	122
Kathy Kolstedt	17/ 0	4/ 19	.211	0/ 0	.000	8/ 11	.727	16	0.9	5	23	28	1.7	12/ 0	4	6	6	7	125
Deanna Samuelson	4/ 0	0/ 3	.000	0/ 0	.000	2/ 2	1.000	2	0.5	4	1	5	1.3	2/ 0	0	0	0	0	22
Rhonda Wiebold	4/ 0	0/ 0	.000	0/ 0	.000	1/ 2	.500	1	0.3	0	1	1	0.3	1/ 0	0	0	0	1	12
Team Rebounds												71							
UNI Totals	25/ 25	654/1507	.434	59/149	.396	324/454	.714	1691	67.6	265	507	843	33.7	487/22	340	528	51	255	—
Opponent Team Rebounds												78							
Opponent Totals	25/ 25	716/1579	.454	48/ 151	.318	361/521	.693	1841	73.6	369	593	1040	41.6	432/ 9	431	539	55	229	—





# Gateway Collegiate Athletic Conference History

In the late 1970's and the early 1980's, a need arose for conferences to represent collegiate women's athletics because of the decline of the Association of Inter-collegiate Athletics for Women (AIAW) and the increased role of the National Collegiate Athletic Association (NCAA) in women's sports.

During this period of transition, some midwestern universities with similar academic and athletic interests bound together in 1982 to form the Gateway Conference.

In August, 1982, the NCAA officially recognized the conference and in September, Patty Viverito was named its first commissioner. Before moving to its permanent headquarters in St. Louis, the Gateway spent three organizational months on the campus of Eastern Illinois University.

The conference is comprised of schools which are members of two different men's conferences. Six Gateway members — Bradley, Drake, Illinois State, Indiana State, Southern Illinois and Wichita State — are in the Missouri Valley Conference. Four others — Eastern Illinois, Northern Iowa, Southwest Missouri State and Western Illinois — are in the Association of Mid-Continent Universities.

On August 21, 1985, the Gateway Conference Presidents Council voted to add a Division I-AA football division for six of its members to give their previously all-women's athletic conference a new look. The move marked the first time in college annals that men's football was added to a women's conference.

Football playing schools in the Gateway include: Eastern Illinois, Illinois State, Indiana State, Northern Iowa, Southern Illinois, Southwest Missouri State and Western Illinois.

The Gateway sponsors championships in 10 sports, including cross country, volleyball, basketball, indoor track and field, swimming and diving, golf, tennis, softball, outdoor track and field and football.

The Gateway, which geographically covers five states, is one of the nation's strongest conferences because of the well-established athletic programs of its members.



**Patty Viverito**



**Tracie Dittmore**

The only commissioner to govern the Gateway Conference **Patty Viverito** is entering her eighth year in that capacity. The 36-year-old native of Chicago was selected following a nationwide search in 1982.

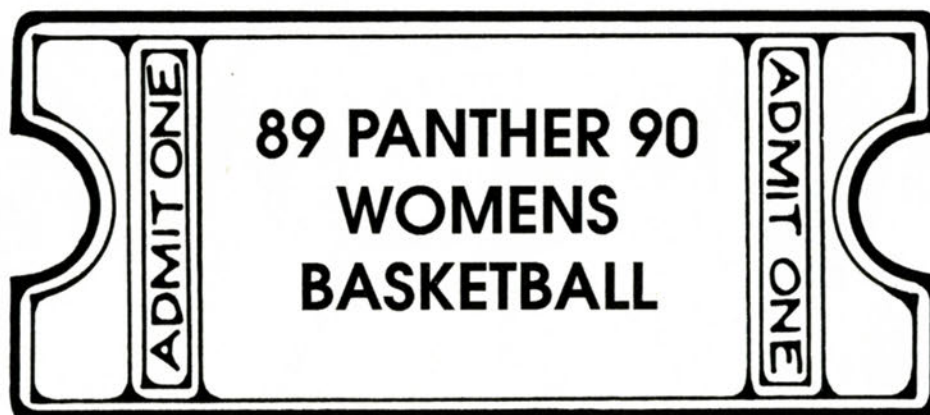
She has a wide and varied background in athletic marketing and administration. Formerly an account executive for the Tidewater Tides minor league baseball team, she served as special projects director at the University of Texas from 1979 to 1981.

Viverito earned her bachelor's degree from Northern Illinois University and her master's degree, with honors, in sports management from the University of Massachusetts.

**Tracie Dittmore** joined the Gateway staff as Director of Information on September 1, 1988. She is responsible for all conference publicity and media information materials.

A 1980 graduate of Kansas State University, she served eight years as the Associate Service Bureau Director of the Big Eight Conference. There, she assisted with all matters pertaining to publicity and promotion. While a student, she worked four years in the KSU sports information office.

Dittmore, who currently resides in St. Louis, is a native of Holton, KS.





## 1988-89 Final Standings

TEAM	GATEWAY	PCT.	OVERALL	PCT.	STREAK	HOME	AWAY	NEUTRAL
Illinois State .....	16-2	.889	23-8	.742	L1	13-1	9-6	1-1
Southern Illinois .....	15-3	.833	19-10	.655	L1	11-3	7-6	1-1
Drake .....	12-6	.667	17-11	.607	L2	11-2	6-8	0-1
Eastern Illinois .....	11-7	.611	16-12	.571	L1	10-2	4-8	2-2
Indiana State .....	10-8	.556	18-9	.667	L2	9-4	8-5	1-0
Western Illinois .....	7-11	.389	9-18	.333	W1	7-4	1-13	1-1
Bradley .....	6-12	.333	12-15	.444	L8	6-5	5-9	1-1
SW Missouri State .....	5-13	.278	7-20	.259	W1	4-9	2-8	1-3
Northern Iowa .....	4-14	.222	7-18	.280	L1	6-6	1-11	0-1
Wichita State .....	4-14	.222	6-20	.231	W1	5-7	1-12	0-1

## Scoring Leaders

PLAYER	SCHOOL	GAMES	2-FGM	3-FGM	FT	PTS.	AVERAGE
Amy Vanderkolk	INSU	18	130	0	80	340	18.9
Robin Hasemann	WIU	18	138	1	60	339	18.8
Carol Baresch	BU	18	103	16	113	335	18.6
Julie Lein	INSU	18	109	0	91	309	17.2
Cindy Kaufmann	ILSU	18	112	17	49	290	16.1
Jan Jensen	DU	17	115	2	25	261	15.4
Janet Hund	WSU	18	111	0	53	275	15.3
Gail Dlask	WIU	18	115	0	33	263	14.6
Cindy Harms	UNI	18	80	14	52	254	14.1
Cathy Kampwerth	SIU	18	110	0	32	252	14.0

## 1989 All-Gateway Conference Basketball Team

FIRST TEAM	SCHOOL	POS.	HT.	CL.	HOMETOWN	PPG/RPG
Robin Hasemann	W. Ill.	F	6-0	So.	Northlake, IL	18.8/5.4
Cindy Kaufmann	Ill. St.	F	6-0	So.	Champaign, IL	16.1/5.3
Lisa Tyler	E. Ill.	F	5-11	Sr.	Aurora, IN	13.8/8.4
Pam Tanner	Ill. St.	G	5-7	Sr.	Louisville, KY	12.8/4.6
Amy Vanderkolk	Ind. St.	F	6-1	Sr.	Lafayette, IN	18.9/8.0
SECOND TEAM						
Carol Baresch	Bradley	G	5-9	Jr.	Westford, MA	18.6/5.4
Dana Fitzpatrick	S. Ill.	G	5-8	Sr.	St. Louis, MO	10.3/5.4
Julie Fitzpatrick	Drake	F	6-1	Sr.	Davenport, IA	13.5/4.2
Jan Jensen	Drake	F	5-10	So.	Kimballton, IA	15.4/7.5
Cathy Kampwerth	S. Ill.	C	6-4	Sr.	Highland, IL	14.0/7.5

PLAYER OF THE YEAR — Pam Tanner, Illinois State

FRESHMAN OF THE YEAR — Gail Dlask, Western Illinois

COACH OF THE YEAR — Jill Hutchison



# 1989-90 Productions

## Bradley Lady Braves

Location: Peoria, IL 61625  
 Enrollment: 5,100  
 Colors: Red and White  
 Home Court: Robertson Memorial Fieldhouse (7,300)  
 Affiliation: NCAA Division I  
 Conference: Gateway Collegiate Athletic Conference  
 President: Dr. Martin G. Abegg  
 Athletic Director: Ron Ferguson  
 Head Coach: Lisa Boyer (Ithaca '79)  
     Record at School: 36-46 (3 seasons)  
     Career Record: 36-46 (3 seasons)  
     Office Phone: (309) 677-2681 (10 a.m.-12 p.m.)  
 Assistant Coach: Cindy Stein (Illinois '84)  
 SID Contact: Bo Ryan  
     Office: (309) 677-2627  
     Home: (309) 347-3343  
     Press Box: (319) 677-2635  
 Last Year's Results:  
     Overall Record: 12-15  
     Conference Record: 6-12 (7th place)  
 Starters Lost/Returning: 0/5  
 Top Returnees: Carol Baresch, guard, 18.3 ppg., Karin Nicholls, forward, 14.0 ppg., Val Wanket, guard-forward, 10.3 ppg., Kelly Mazza, guard, 10.1 ppg., Heidi Nelson, center, 7.1 ppg.  
 Lettermen Lost/Returning: 0/12  
 Top Newcomers: Shiela Jenkins, 6-0, forward, Dawyell Jones, 5-10, forward-guard  
 Series Against UNI:  
     Overall Record: BU leads 10-2  
     Last Meeting: BU 60-57 (Jan. 26, 1989, at BU)  
                     UNI 76-62 (Feb. 25, 1989, at UNI)



## Central Missouri State Jennies

Location: Warrensburg, MO 64093  
 Enrollment: 11,000  
 Colors: Cardinal and Black  
 Home Court: Multipurpose Building (8,500)  
 Affiliation: NCAA Division II  
 Conference: Missouri Intercollegiate Athletic Association  
 President: Dr. Ed Elliott  
 Athletic Director: Jerry Hughes  
 Head Coach: Jonathan Pye (New Mexico '75)  
     Record at School: 101-23 (4 seasons)  
     Career Record: 101-23 (4 seasons)  
     Office Phone: (816) 429-4253 (mornings)  
 Assistant Coaches: Sue Koch (Cincinnati '82)  
     Ernie Haag (Central Missouri State '88)  
 SID Contact: Todd Gurnow  
     Office: (816) 429-4080  
     Home: (816) 429-2652  
     Press Box: (816) 429-4905  
 Last Year's Results:  
     Overall Record: 29-5  
     Conference Record: 14-0 (1st place)  
 Starters Lost/Returning: 2/3  
 Top Returnees: Barb Sorensen, forward, 18.3 ppg., Robin Williams, forward, 9.1 ppg., Cathy Hagenbaumer, guard, 5.7 ppg.  
 Lettermen Lost/Returning: 3/9  
 Top Newcomers: Kristi Lawson, 5-11, forward, Gina Blanks, 5-8, guard, Irene Thomas, 5-9, forward  
 Series Against UNI:  
     Overall Record: CMSU leads 3-2  
     Last Meeting: CMSU 88-61 (Nov. 21, 1983, at CMSU)



## Chicago State Cougars

Location: Chicago, IL 60628  
 Enrollment: 6,000  
 Colors: Green and Gold  
 Home Court: Physical Education & Athletic Building (2,500)  
 Affiliation: NCAA Division I  
 Conference: Independent  
 President: Dr. Harold Delaney (Acting)  
 Athletic Director: Al Avant  
 Head Coach: John Boosalis (Northeastern Illinois '82)  
     Record at School: 4-44 (2 seasons)  
     Career Record: 4-44 (2 seasons)  
     Office Phone: (312) 995-3939 (12 p.m.-5 p.m.)  
 Assistant Coaches: TBA  
 SID Contact: TBA  
     Office: (312) 995-2267  
     Home: TBA  
     Press Box: (312) 995-3339  
 Last Year's Results:  
     Overall Record: 3-22  
     Conference Record: N/A  
 Starters Lost/Returning: 4/1  
 Top Returnees: Rhgea Tate, guard, 7.0 ppg.  
 Lettermen Lost/Returning: 4/2  
 Top Newcomers: Lolita Gill, 5-11, forward, Debbie Scott, 6-0, forward, Sheantel Hill, 5-5, guard  
 Series Against UNI:  
     Overall Record: UNI leads 2-1  
     Last Meeting: UNI 95-37 (Jan. 18, 1989, at UNI)



## Creighton Lady Jays

Location: Omaha, NE 68178  
 Enrollment: 6,100  
 Colors: Blue and White  
 Home Court: Omaha Civic Auditorium (9,800)  
 Affiliation: NCAA Division I  
 Conference: High Country Athletic Conference  
 President: Rev. Michael G. Morrison, S.J.  
 Athletic Director: Mary Higgins  
 Head Coach: Bruce Rasmussen (Northern Iowa '71)  
     Record at School: 136-119 (9 seasons)  
     Career Record: 136-119 (9 seasons)  
     Office Phone: (402) 280-2720 (mornings)  
 Assistant Coach: Tony DiCecco (Upper Iowa '71)  
 SID Contact: Kevin Sarver  
     Office: (402) 280-2488  
     Home: (402) 593-7451  
     Press Box: (402) 444-4750  
 Last Year's Results:  
     Overall Record: 6-21  
     Conference Record: 2-8 (6th place)  
 Starters Lost/Returning: 3/2  
 Top Returnees: Kathy Halligan, forward, 15.3 ppg., Amy Spencer, forward, 12.3 ppg.  
 Lettermen Lost/Returning: 3/6  
 Top Newcomers: Diane Beldeck, 5-10, forward, Melissa Sanford, 5-10, forward  
 Series Against UNI:  
     Overall Record: CU leads 2-0  
     Last Meeting: CU 113-72 (Dec. 5, 1987, at CU)





## Drake Bulldogs



Location: Des Moines, IA 50311  
 Enrollment: 6,600  
 Colors: Blue and White  
 Home Court: Drake Fieldhouse (2,000)  
 Affiliation: NCAA Division I  
 Conference: Gateway Collegiate Athletic Conference  
 President: Dr. Michael Ferrari  
 Athletic Director: Curt Blake  
 Head Coach: Susan Yow (Elon '76)  
     Record at School: 41-42 (3 seasons)  
     Career Record: 159-143 (11 seasons)  
     Office Phone: (515) 271-2165 (10 a.m.-12 p.m.)  
 Assistant Coaches: Sharon Allen (East Tennessee State '81),  
     Sue Doran (West Georgia '78), April Newton (East Tennessee  
     State '88)  
 SID Contact: Mary Schmitt  
     Office: (515) 271-3740  
     Home: (515) 223-6581  
     Press Box: (515) 271-3740  
 Last Year's Results:  
     Overall Record: 17-11  
     Conference Record: 12-6 (3rd place)  
 Starters Lost/Returning: 3/2  
 Top Returnees: Jennie Fitzgerald, guard, 10.9 ppg., Jan Jensen,  
     forward, 16.2 ppg.  
 Lettermen Lost/Returning: 4/6  
 Top Newcomers: Lisa Martin, 6-2, center, Janet Meeker, 5-10,  
     forward, Mitzy Pilcher, 6-0, forward, Jenny Stanton, 6-0,  
     forward  
 Series Against UNI:  
     Overall Record: DU leads 18-3  
     Last Meeting: DU 108-72 (Jan. 21, 1989, at DU)  
     DU 70-61 (Feb. 18, 1989, at UNI)

## Eastern Illinois Panthers

Location: Charleston, IL 61920  
 Enrollment: 10,500  
 Colors: Blue and Gray  
 Home Court: Lantz Gym (6,500)  
 Affiliation: NCAA Division I  
 Conference: Gateway Collegiate Athletic Conference  
 President: Dr. Stan Rives  
 Athletic Director: Mike Ryan  
 Head Coach: Barbara Hilke (Western Oregon State '74)  
     Record at School: 194-103 (10 seasons)  
     Career Record: 194-103 (10 seasons)  
     Office Phone: (217) 581-6008 (mornings)  
 Assistant Coach: Scott Lewis (Louisville '84)  
 SID Contact: Ron Yoakum  
     Office: (217) 581-6408  
     Home: (217) 581-3697  
     Press Box: (217) 581-5135  
 Last Year's Results:  
     Overall Record: 16-12  
     Conference Record: 11-7 (4th place)  
 Starters Lost/Returning: 2/3  
 Top Returnees: Barb Perkes, guard, 15.3 ppg., Laura Mull, center,  
     10.7 ppg., Shelly Ethridge, guard, 10.2 ppg.  
 Lettermen Lost/Returning: 3/8  
 Top Newcomers: Michele Rogiers, 6-2, forward, Sara Losenegger,  
     5-10, guard, Karen McCaa, 5-8, guard, Heather Youngman, 6-0,  
     forward  
 Series Against UNI:  
     Overall Record: EIU leads 12-3  
     Last Meeting: EIU 69-59 (Jan. 7, 1989, at EIU)  
     UNI 91-81 (Feb. 4, 1989, at UNI)



## Illinois State Lady Redbirds

Location: Normal, IL 61761  
 Enrollment: 22,241  
 Colors: Red and White  
 Home Court: Redbird Arena (10,200)  
 Affiliation: NCAA Division I  
 Conference: Gateway Collegiate Athletic Conference  
 President: Thomas P. Wallace  
 Athletic Director: Ron Wellman  
 Head Coach: Jill Hutchison (New Mexico '67)  
     Record at School: 321-179 (18 seasons)  
     Career Record: 321-179 (18 seasons)  
     Office Phone: (309) 438-2567 (mornings)  
 Assistant Coaches: Lisa Robinson (Illinois '83), Chris McClure  
     (Tenn.-Chattanooga '85), Chris Stelplugh (SW Missouri State '83)  
 SID Contact: Dan Willis  
     Office: (309) 438-3825  
     Home: (309) 663-9163  
     Press Box: (309) 438-5950  
 Last Year's Results:  
     Overall Record: 23-8  
     Conference Record: 18-2 (1st place)  
 Starters Lost/Returning: 2/3  
 Top Returnees: Char Govan, forward, 10.6 ppg., Cindy Kaufmann,  
     forward-center, 15.4 ppg., LuAnn Robinson, guard, 10.3 ppg.  
 Lettermen Lost/Returning: 2/8  
 Top Newcomers: Caryn Brune, 6-4, center, Tammy Kocker, 6-1,  
     center, Nichole Porter, 5-6, guard  
 Series Against UNI:  
     Overall Record: ISU leads 14-1  
     Last Meeting: ISU 93-68 (Jan. 14, 1989, at UNI)  
     ISU 83-65 (Feb. 9, 1989, at ISU)



## Indiana State Sycamores

Location: Terre Haute, IN 47809  
 Enrollment: 12,005  
 Colors: Blue and White  
 Home Court: ISU Arena (5,000)  
 Affiliation: NCAA Division I  
 Conference: Gateway Collegiate Athletic Conference  
 President: Dr. Richard G. Landini  
 Athletic Director: Brian Faison  
 Head Coach: Kay Riek (Drake '84)  
     Record at School: 0-0 (1st season)  
     Career Record: 0-0 (1st season)  
     Office Phone: (812) 237-4091 (9 a.m.-10 a.m.)  
 Assistant Coaches: Shelley Patterson (Washington State '84), Kim  
     Tullis (Miami, OH) '88)  
 SID Contact: Karen McDevitt  
     Office: (812) 237-4159  
     Home: NA  
     Press Box: (812) 237-4160  
 Last Year's Results:  
     Overall Record: 18-9  
     Conference Record: 10-8 (5th place)  
 Starters Lost/Returning: 2/3  
 Top Returnees: Julie Lein, center, 16.0 ppg., Angie Eichhorst,  
     forward, 10.9 ppg., Shavonda Averette, guard, 6.1 ppg., Kim  
     Darver, guard, 6.6 ppg.  
 Lettermen Lost/Returning: 2/8  
 Top Newcomers: Mychaela Brandle, 5-8, guard, Jeanie James, 5-6,  
     guard, Kerri Zietlow, 6-1, forward-center  
 Series Against UNI:  
     Overall Record: ISU leads 11-1  
     Last Meeting: ISU 72-67 (Jan. 12, 1989, at UNI)  
     ISU 75-67 (Feb. 11, 1989, at ISU)





## Iowa State Cyclones

Location: Ames, IA 50011  
 Enrollment: 25,448  
 Colors: Cardinal and Gold  
 Home Court: Hilton Coliseum (14,020)  
 Affiliation: NCAA Division I  
 Conference: Big Eight Conference  
 President: Dr. Gordon Eaton  
 Athletic Director: Max Urlick  
 Head Coach: Pam Wettig (Bowling Green State '72)  
 Record at School: 71-68 (5 seasons)  
 Career Record: 202-170 (14 seasons)  
 Office Phone: (515) 294-3436 (mornings)  
 Assistant Coaches: Mary Ann Myers (Miami (OH) '82), Barb Iten (California-Davis '72), Cassandra Howell (Johnson C. Smith '87)  
 SID Contact: Denise Seomin  
 Office: (515) 294-3372  
 Home: (515) 233-2109  
 Press Box: (515) 294-8305  
 Last Year's Results:  
 Overall Record: 15-13  
 Conference Record: 6-8 (5th place)  
 Starters Lost/Returning: 3/2  
 Top Returnees: Shelly Coyle, forward, 9.8 ppg., Vanessa Ward, guard-forward, 12.1 ppg  
 Lettermen Lost/Returning: 3/9  
 Top Newcomers: Cledeella Evans, 5-7, guard-forward, Shanda Fitzgerald, 5-11, forward-center, Kim Van Deest, 5-11, forward, Tynnetta Rasheed, 5-7, guard  
 Series Against UNI:  
 Overall Record: ISU leads 14-5  
 Last Meeting: ISU 88-66 (Dec. 19, 1988, at ISU)



## Nebraska Huskers

Location: Lincoln, NE 68588  
 Enrollment: 25,000  
 Colors: Scarlet and Cream  
 Home Court: Devaney Sports Center (14,987)  
 Affiliation: NCAA Division I  
 Conference: Big Eight Conference  
 Chancellor: Dr. Martin A. Massengale  
 Athletic Director: Bob Devaney  
 Head Coach: Angela Beck (Millikin '80)  
 Record at School: 52-38 (4 seasons)  
 Career Record: 148-112 (10 seasons)  
 Office Phone: (402) 472-6462 (9 a.m.-12 p.m.)  
 Assistant Coaches: Theresa Becker (SE Missouri St. '81), Debbie McClurd (Indiana '84), Rhonda Osborn (Central College '87), Maggie Mahood (Chadron State '84)  
 SID Contact: Terry Beek  
 Office: (402) 472-2263  
 Home: (402) 488-4079  
 Press Box: (402) 472-1406  
 Last Year's Results:  
 Overall Record: 14-14  
 Conference Record: 5-9 (6th place)  
 Starters Lost/Returning: 3/2  
 Top Returnees: Ann Halsne, forward, 9.9 ppg., Kelly Hubert, forward, 4.4 ppg., Sarah Muller, forward, 3.5 ppg., Kim Yancey, guard, 2.6 ppg.  
 Lettermen Lost/Returning: 6/6  
 Top Newcomers: Karen Jennings, 6-2, forward, Kristi Kincaid, 6-0, forward  
 Series Against UNI:  
 Overall Record: 0-0 (1st meeting)



## Northern Arizona Lady Lumberjacks

Location: Flagstaff, AZ 86011  
 Enrollment: 13,600  
 Colors: Blue and Gold  
 Home Court: Walkup Skydome (8,000)  
 Affiliation: NCAA Division I  
 Conference: Big Sky Conference  
 President: Dr. Eugene M. Hughes  
 Athletic Director: Tom Jurich  
 Head Coach: Dave Brown (New Mexico State '63)  
 Record at School: 74-82 (6 seasons)  
 Career Record: 375-217 (19 seasons)  
 Office Phone: (602) 523-6784 (mornings)  
 Assistant Coaches: TBA  
 SID Contact: Mary Norby  
 Office: (602) 523-6330  
 Home: (602) 263-6396  
 Press Box: (602) 523-7727  
 Last Year's Results:  
 Overall Record: 12-14  
 Conference Record: 6-10 (6th place, tied)  
 Starters Lost/Returning: 3/2  
 Top Returnees: Tanja Brungard, forward, 13.3 ppg., Tracy Preter, forward, 7.7 ppg.  
 Lettermen Lost/Returning: 5/8  
 Top Newcomer: Christina Willis, 6-2, center-forward  
 Series Against UNI:  
 Overall Record: 0-0 (1st meeting)



## Oklahoma Sooners

Location: Norman, OK 73019  
 Enrollment: 21,300  
 Colors: Crimson and Cream  
 Home Court: Lloyd Noble Center (10,871)  
 Affiliation: NCAA Division I  
 Conference: Big Eight Conference  
 President: Dr. Richard Van Horn  
 Athletic Director: Donnie Duncan  
 Head Coach: Valerie Goodwin-Colbert (Wayland Baptist '79)  
 Record at School: 25-29 (2 seasons)  
 Career Record: 73-92 (6 seasons)  
 Office Phone: (405) 325-8321 (mornings)  
 Assistant Coaches: Cindy Durham (Kansas State '87), Caryn Kaufman (Bradley '87)  
 SID Contact: Debbie Copp  
 Office: (405) 325-8367  
 Home: (405) 329-6799  
 Press Box: (405) 325-1024  
 Last Year's Results:  
 Overall Record: 11-16  
 Conference Record: 4-10 (8th place)  
 Starters Lost/Returning: 3/2  
 Top Returnees: Tami Rogers, forward, 12.8 ppg., Kelli Epps, guard, 9.5 ppg.  
 Lettermen Lost/Returning: 4/6  
 Top Newcomers: Cathy Bassett, 6-0, forward, Sharon Webster, 6-0, forward  
 Series Against UNI:  
 Overall Record: 0-0 (1st meeting)





## Southern Illinois Salukis

Location: Carbondale, IL 62901  
 Enrollment: 24,000  
 Colors: Maroon and White  
 Home Court: SIU Arena (10,014)  
 Affiliation: NCAA Division I  
 Conference: Gateway Collegiate Athletic Conference  
 President: John C. Guyon  
 Athletic Director: Jim Hart  
 Head Coach: Cindy Scott (Memphis State '75)  
 Record at School: 230-114 (12 seasons)  
 Career Record: 230-114 (12 seasons)  
 Office Phone: (618) 453-5484 (10-11 a.m.)  
 Assistant Coaches: Julie Beck (Missouri '78), Myra Fishback (Tennessee Tech '85)  
 SID Contact: Mitchell Parkinson  
 Office: (618) 536-5566  
 Home: (618) 457-7410  
 Press Box: (618) 453-7600  
 Last Year's Results:  
 Overall Record: 19-10  
 Conference Record: 16-4 (2nd place)  
 Starters Lost/Returning: 3/2  
 Top Returnee: Amy Rakers, forward, 10.5 ppg.  
 Lettermen Lost/Returning: 4/9  
 Top Newcomers: Alison Smith, 5-8, guard, Cheryl Weis, 6-2, center  
 Series Against UNI:  
 Overall Record: SIU leads 12-0  
 Last Meeting: SIU 56-43 (Jan. 9, 1989, at SIU)  
 SIU 79-59 (Feb. 2, 1989, at UNI)



## Southwest Missouri State Lady Bears

Location: Springfield, MO 65804  
 Enrollment: 17,885  
 Colors: Maroon and White  
 Home Court: John Q. Hammons Student Center (8,858)  
 Affiliation: NCAA Division I  
 Conference: Gateway Collegiate Athletic Conference  
 President: Dr. Marshall Gordon  
 Athletic Director: Bill Rowe  
 Head Coach: Cheryl Burnett (Kansas '81)  
 Record at School: 16-37 (2 seasons)  
 Career Record: 16-37 (2 seasons)  
 Office Phone: (417) 836-4136 (9 a.m.-12 p.m.)  
 Assistant Coaches: Lynnette Robinson (Illinois '82), Marla Douglass (SW Missouri St. '88), Tracey Tarkington (SW Missouri St. '89)  
 SID Contact: Jon Ripperger  
 Office: (417) 836-5402  
 Home: (417) 866-7060  
 Press Box: (417) 836-4150  
 Last Year's Results:  
 Overall Record: 7-20  
 Conference Record: 5-13 (8th place)  
 Starters Lost/Returning: 0/5  
 Top Returnees: Patty Porter, guard, 15.3 ppg., Karen Rapier, forward, 13.1 ppg., Susan Pockrandt, forward, 5.7 ppg., Amy Nelson, guard, 5.7 ppg., Dyana Haynes, forward, 5.0 ppg.  
 Lettermen Lost/Returning: 0/9  
 Top Newcomers: LaWaynta Dawson, 6-2, center, Secelia Winkfield, 5-9, guard, Erika Storms, 5-11, forward, Denna Harvill, 5-9, guard  
 Series Against UNI: Overall Record: SMSU leads 9-5  
 Last Meeting: SMSU 73-62 (Jan. 2, 1989, at UNI)  
 SMSU 69-64 (Mar. 3, 1989, at SMSU)



## Southwest Texas State Bobcats

Location: San Marcos, TX 78666  
 Enrollment: 21,000  
 Colors: Maroon and Gold  
 Home Court: Strahan Coliseum (7,200)  
 Affiliation: NCAA Division I  
 Conference: Southland Conference  
 President: Dr. Jerome Supple  
 Athletic Director: Bill Miller  
 Head Coach: Linda Sharp (California State-Fullerton '73)  
 Record at School: 0-0 (1st season)  
 Career Record: 271-99 (12 seasons)  
 Office Phone: (512) 245-2298 (mornings)  
 Assistant Coaches: Mary Ellen Burt (Southern Cal. '82), Bethany Rosebrock (Texas A & M '87), Starlite Williams (Tex.-San Antonio '87)  
 SID Contact: Tony Brubaker  
 Office: (512) 245-2966  
 Home: (512) 392-5124  
 Press Box: (512) 245-2434  
 Last Year's Results:  
 Overall Record: 11-15  
 Conference Record: 5-9 (6th place)  
 Starters Lost/Returning: 2/3  
 Top Returnee: Shelly Borton, guard, 18.9 ppg., Tami Krout, guard, 4.8 ppg., Landthis Ortiz, guard, 8.8 ppg.  
 Lettermen Lost/Returning: 2/8  
 Top Newcomers: Teresa Cobble, 5-7, guard, Angie Goodwin, 5-7, guard, Rowena Hickman, 5-7, guard, Marla Roepke, 6-0, post  
 Series Against UNI:  
 Overall Record: 0-0 (1st meeting)



## Texas Southern Tigers

Location: Houston, TX 77004  
 Enrollment: 9,500  
 Colors: Maroon and Gray  
 Home Court: Health and Physical Education Arena (7,500)  
 Affiliation: NCAA Division I  
 Conference: Southwestern Athletic Conference  
 President: Dr. William H. Harris  
 Athletic Director: Dr. Thurman Robins  
 Head Coach: Robert Gatlin (Texas Southern '64)  
 Record at School: 38-41 (4 seasons)  
 Career Record: 38-41 (4 seasons)  
 Office Phone: (713) 639-1921 (mornings)  
 Assistant Coaches: Dorothy Wheatfall (Texas Southern '64), Nathan Scott (Texas Southern '86)  
 SID Contact: Darrell Simeon  
 Office: (713) 527-7270  
 Home: (713) 529-8451  
 Press Box: (713) 639-1941  
 Last Year's Results:  
 Overall Record: 12-16  
 Conference Record: 5-9 (6th place)  
 Starters Lost/Returning: 3/2  
 Top Returnees: Soyna Dixon, forward, 9.2 ppg., Ernestine Clayton, center, 3.2 ppg.  
 Lettermen Lost/Returning: 6/3  
 Top Newcomers: Valerie Yats, 5-8, forward, Andrea Smith, 5-8, forward  
 Series Against UNI:  
 Overall Record: 0-0 (1st meeting)



## Western Illinois Westerwinds

Location: Macomb, IL 61455  
 Enrollment: 12,500  
 Colors: Purple and Gold  
 Home Court: Brophy Hall (1,500)  
 Affiliation: NCAA Division I  
 Conference: Gateway Collegiate Athletic Conference  
 President: Dr. Ralph Wagoner  
 Athletic Director: Dr. Helen Smiley  
 Head Coach: Kelly Hill (Southern California '80)  
 Record at School: 18-61 (3 seasons)  
 Career Record: 55-108 (6 seasons)  
 Office Phone: (309) 298-1703 (8 a.m.-12 p.m.)  
 Assistant Coaches: Terri Sheridan (Wisconsin-LaCrosse '79), Lori Opp (Western Illinois '88)  
 SID Contact: Bonnie Barker  
 Office: (309) 298-1663  
 Home: (309) 833-4811  
 Press Box: (309) 298-2246  
 Last Year's Results:  
 Overall Record: 9-18  
 Conference Record: 7-11 (6th place)  
 Starters Lost/Returning: 2/3  
 Top Returnees: Robin Hasemann, forward, 18.6 ppg., Gail Glask, center, 13.3 ppg., Joe Hanig, guard, 4.4 ppg.  
 Lettermen Lost/Returning: 2/8  
 Top Newcomers: Heather Dunham, 5-8, guard, Kathie Humblett, 6-0, center, Susan Johnson, 5-6, guard, Sheryl Klemme, 5-8, guard  
 Series Against UNI:  
 Overall Record: WIU leads 8-7  
 Last Meeting: WIU 101-83 (Jan. 28, 1989, at WIU)  
 WIU 86-77 (Feb. 23, 1989, at UNI)



## Wichita State Shockers

Location: Wichita, KS 67208  
 Enrollment: 17,250  
 Colors: Yellow and Black  
 Home Court: Levitt Arena (10,575)  
 Affiliation: NCAA Division I  
 Conference: Gateway Collegiate Athletic Conference  
 President: Dr. Warren B. Armstrong  
 Athletic Director: Tom Shupe  
 Head Coach: Linda Hargrove (Southwestern '75)  
 Record at School: 0-0 (1st season)  
 Career Record: 326-112 (17 seasons)  
 Office Phone: (316) 689-3257 (mornings)  
 Assistant Coaches: DeAnn Craft (Central Florida '87), Jackie Wilson (Cowley County Comm. '81)  
 SID Contact: Scott Schumacher  
 Office: (316) 689-3265  
 Home: (316) 721-6015  
 Press Box: (316) 689-3299  
 Last Year's Results:  
 Overall Record: 6-20  
 Conference Record: 4-14 (9th place, tied)  
 Starters Lost/Returning: 1/4  
 Top Returnees: Janet Hund, center, 14.1 ppg., Tonya Lane, guard, 13.3 ppg., Jean Bacon, forward, 8.7 ppg. Kristin Pelowski, forward, 6.4 ppg.  
 Lettermen Lost/Returning: 1/6  
 Top Newcomers: Ramona Matthews, 5-6, guard, Roseanne Olmstead, 6-2, center, Gina Johnson, 5-10, forward  
 Series Against UNI:  
 Overall Record: WSU leads 8-4  
 Last Meeting: UNI 84-77 (Jan. 4, 1989, at UNI)  
 UNI 83-78 (Mar. 1, 1989, at WSU)



## Wisconsin-Green Bay Phoenix

Location: Green Bay, WI 54311  
 Enrollment: 5,000  
 Colors: Phoenix Red, Green and White  
 Home Court: Phoenix Sports Center (2,200)  
 Affiliation: NCAA Division I  
 Conference: North Star Conference  
 Chancellor: David L. Outcalt  
 Athletic Director: Dan Spielmann  
 Head Coach: Carol Hammerle (Northern Michigan '70)  
 Record at School: 279-141 (16 seasons)  
 Career Record: 279-141 (16 seasons)  
 Office Phone: (414) 465-2145 (10 a.m.-12 p.m.)  
 Assistant Coaches: Ada Gee (Colorado College '83), Sue Bodilly (Wisconsin-Green Bay '87)  
 SID Contact: Christopher Sampson  
 Office: (414) 465-2145  
 Home: (414) 435-6223  
 Press Box: None  
 Last Year's Results:  
 Overall Record: 19-10  
 Conference Record: 11-3 (3rd place)  
 Starters Lost/Returning: 3/2  
 Top Returnees: Lori Hansen, forward, 5.6 ppg., Amy O'Brien, guard, 3.4 ppg., Beth Peters, forward, 4.6 ppg., Patti VanSwol, guard, 6.4 ppg.  
 Lettermen Lost/Returning: 5/10  
 Top Newcomers: Christi Burden, 5-10, guard, Dawn Schirmacher, 6-0, forward, Kelly Williams, 5-10, forward  
 Series Against UNI:  
 Overall Record: Series Tied 1-1  
 Last Meeting: UWGB 80-54 (Dec. 9, 1988, at UWGB)



University of Tennessee, Knoxville  
 March 30 & April 1



# The Records

---

## Individual Season Records

---

Field Goals Made:	216 (Diane Roberts, 84-85)	Points:	541 (Diane Roberts, 84-85)
Field Goals Attempted:	448 (Diane Roberts, 84-85)	Scoring Average:	19.3 (Diane Roberts, 84-85)
Field Goal Percentage:	54.1 (Sue Grove, 118-218, 80-81)	Assists:	117 (Loretha Mosley, 88-89)
Free Throws Made:	109 (Diane Roberts, 84-85)	Assist Average:	4.7 (Loretha Mosley, 88-89)
Free Throws Attempted:	161 (Diane Roberts, 84-85)	Rebounds:	224 (Deb Drenth, 80-81)
Free Throw Percentage:	88.1 (Kris Huffman, 52-59, 88-89)	Rebound Average:	10.1 (Pat Zalesky, 78-79)
Three-Point Goals Made:	30 (Diane Roberts, 86-87)	Fouls:	106 (Sandy Grabowski, 85-86)
Three-Point Goals Attempted:	81 (Diane Roberts, 86-87)	Disqualifications:	14 (Sandy Grabowski, 85-86)
Three-Point Goal Percentage:	52.8 (Kris Huffman, 19-36, 88-89)	Turnovers:	153 (Karen Gorman, 84-85)
		Steals:	84 (Deb Drenth, 82-83)
		Games Played:	31 (Several, 81-82)
		Blocked Shots:	66 (Carol Hogan, 82-83)

---

## Team Season Records

---

Field Goals Made:	933 (81-82)	Rebound Average:	44.3 (80-81)
Field Goals Attempted:	2,016 (81-82)	Assists:	388 (80-81)
Field Goal Percentage:	46.3 (933-2,016, 81-82)	Turnovers:	868 (78-79)
Free Throws Made:	393 (84-85)	Steals:	364 (81-82)
Free Throws Attempted:	626 (78-79)	Blocked Shots:	149 (81-82)
Free Throw Percentage:	71.7 (307-428, 87-88)	Fouls:	564 (80-81)
Three-Point Goals Made:	59 (88-89)	Wins:	22 (81-82)
Three-Point Goals Attempted:	149 (88-89)	Losses:	25 (83-84)
Three-Point Goal Percentage:	39.6 (59-149, 88-89)	Winning Percentage:	84.2 (16-3, 75-76)
Points:	2,205 (81-82)	Defensive Average (Low):	61.2 (82-83)
Scoring Average:	73.3 (80-81)	Defensive Average (High):	82.4 (83-84)
Rebounds:	1,241 (80-81)		

---

## Individual Single Game Records

---

Field Goals Made:	17 (Diane Roberts, 84-85)	Three-Point Goal Percentage:	62.5 (Diane Roberts, 5-8, 86-87)
Field Goals Attempted:	31 (Diane Roberts, 84-85)	Assists:	13 (Anne Otten, 85-86)
Field Goal Percentage:	90.9 (Cindy Harms, 10-11, 86-87)	Rebounds:	19 (Lisa Geske, 82-83)
Free Throws Made:	16 (Deb Drenth, 81-82)	Blocked Shots:	7 (Carol Hogan, Lisa Geske, Deb Drenth, Kathy Konigsmark, 82-83)
Free Throws Attempted:	19 (Deb Drenth, 81-82)		
Free Throw Percentage:	100.0 (Nicki Rohde, 10-10, 87-88)	Consecutive Field Goals:	14 (Diane Roberts, 85-86)
Three-Point Goals Made:	5 (Diane Roberts, 86-87)	Consecutive Free Throws:	10 (Nicki Rohde, 87-88)
Three-Point Goals Attempted:	8 (Diane Roberts, 86-87)		

---

## Team Single Game Records

---

Field Goals Made:	41 (Illinois at Chicago, 82-83)	Three-Point Goals Made:	(Tie) 7 (Western Illinois, 88-89)
Field Goals Attempted:	90 (Concordia, 80-81)	Three-Point Goals Attempted:	15 (Drake, 88-89)
Field Goal Percentage:	61.1 (Indiana State, 33-54, 87-88)	Three-Point Goal Percentage:	100.00 (Indiana State, 4-4, 86-87)
Free Throws Made:	32 (Iowa State, 78-79)	Assists:	26 (Loras, 80-81)
Free Throws Attempted:	46 (Iowa State, 78-79)	Rebounds:	65 (Concordia, 80-81)
Free Throw Percentage:	100.0 (Illinois State, 8-8, 87-88)	Steals:	26 (Marycrest, 79-80)
Margin of Victory:	58 (Chicago State, 95-37, 88-89)	Turnovers:	46 (Iowa State, 78-79)
		Points:	101 (Northwestern 75-76)



# Northern Iowa Career Records

## Scoring

1. Diane Roberts	1701
2. Deb Drenth	1449
3. Kris Huffman	1294
4. Tami Schebler	1268
5. Cindy Harms	1045
6. Lisa Geske	1036
7. Betty Davis	999
8. Sandy Grabowski	793
9. Lynn Hach	615
10. Nicki Rohde	584



## Field Goals Made

1. Diane Roberts	664
2. Deb Drenth	559
3. Tami Schebler	558
4. Kris Huffman	539
5. Lisa Geske	438
6. Betty Davis	426
7. Cindy Harms	410
8. Sandy Grabowski	314
9. Lynn Hach	247
10. Carol Hogan	240

## Field Goal Attempts

1. Diane Roberts	1552
2. Deb Drenth	1184
3. Kris Huffman	1173
4. Tami Schebler	1144
5. Betty Davis	1102
6. Lisa Geske	1038
7. Cindy Harms	873
8. Lynn Hach	739
9. Sandy Grabowski	642
10. Lisa Laughlin	638

## Field Goal Percentage

1. Sue Grove	53.6	(218-407)
2. Sandy Grabowski	48.9	(314-642)
3. Tami Schebler	48.8	(558-1144)
Pat Zalesky	48.8	(203-416)
5. Carol Hogan	48.3	(140-297)
6. Deb Drenth	47.2	(559-1184)
7. Cindy Harms	47.0	(410-873)
8. Karen Gorman	46.2	(NA)
9. Kris Huffman	46.0	(539-1173)
10. Diane Roberts	42.8	(664-1552)

## Rebounding

1. Tami Schebler	788
2. Deb Drenth	758
3. Diane Roberts	676
4. Sandy Grabowski	562
5. Lisa Geske	521
6. Kris Huffman	475
7. Pat Zalesky	426
8. Carol Hogan	417
9. Cindy Harms	368
10. Kim Smythe	337

## Free Throws Made

1. Deb Drenth	331
2. Diane Roberts	320
3. Cindy Harms	209
4. Kris Huffman	188
5. Sandy Grabowski	167
6. Lisa Geske	160
7. Nicki Rohde	148
8. Betty Davis	147
9. Tami Schebler	142
10. Sue Grove	138

## Free Throw Attempts

1. Deb Drenth	449
2. Diane Roberts	441
3. Cindy Harms	294
4. Sandy Grabowski	288
5. Betty Davis	253
6. Lisa Geske	249
7. Tami Schebler	243
8. Pat Zalesky	241
9. Kris Huffman	230
10. Nicki Rohde	202

## Free Throw Percentage

1. Kris Huffman	81.7	(188-230)
2. Deb Drenth	73.7	(331-449)
3. Kathy Konigsmark	73.5	(NA)
4. Nicki Rohde	73.3	(148-202)
5. Diane Roberts	72.6	(320-441)
6. Sue Grove	72.5	(138-182)
7. Cindy Harms	71.8	(209-291)
8. Karen Gorman	70.7	(75-106)
9. Anne Otten	69.3	(121-179)
10. Robyn Knapp	66.7	(80-120)

## Assists

1. Kris Huffman	322
2. Deb Drenth	292
3. Betty Davis	261
4. Loretha Mosley	198
5. Lisa Laughlin	188
6. Diane Roberts	171
7. Anne Otten	169
8. Nicki Rohde	166
9. Kathy Konigsmark	151
10. Molly Kelly	126



# Year-by-Year Results (Since 1974)

UNI 1974-75 (8-9)	Opp	54 Luther	57	66 Wisconsin-Stevens	61	67 @St. Louis	36
47 Grand View	65	62 Luther	67	Point		81 @Southern Illinois-	59
50 Iowa Wesleyan	51	66 Wisconsin-LaCrosse	68	71 @Lincoln (IL)	82	Edwardsville	
51 Wartburg	53	45 Drake	66	74 @Northern Illinois	64	71 Augustana (SD)	72
66 NIACC	64	68 South Dakota	53	73 @Minnesota-Duluth	58	67 @Mt. Mercy	52
58 Graceland	41	67 Drake	93	76 @Wisconsin-LaCrosse	86	54 @DePaul	59
66 Luther	83	52 Iowa State	87	50 @St. Cloud State	78	81 Wisconsin-Milwaukee	80
51 Iowa State	72			80 @Loras	55	66 @Iowa State	77
91 Westmar	53	UNI 1978-79 (2-20)	Opp	86 Simpson	60		
86 Buena Vista	43	61 Iowa	106	70 Morningside	60	UNI 1983-84 (2-25)	Opp
70 Northwestern	74	58 Drake	77	54 St. Ambrose	49	47 @Missouri	110
67 Wisconsin-LaCrosse	73	69 North Iowa Area CC	87	65 @St. Cloud State	67	61 @Central Missouri	88
83 Iowa	39	57 Luther	72	55 Augustana (IL)	58	46 St. Ambrose	68
69 Luther	73	62 Wisconsin-Eau Claire	52	49 William Penn	71	64 Iowa	71
53 Wartburg	47	76 St. Cloud State	87	84 Northwestern	69	63 St. Cloud State	78
56 William Penn	74	64 Northern Michigan	75	62 @St. Ambrose	76	73 Iowa State	65
64 Dordt	49	68 Iowa State	88	91 @Northwestern	78	58 @Loyola	94
79 Iowa State	70	70 Wartburg	44	UNI 1981-82 (22-9)	Opp	44 @Illinois-Chicago	74
		56 Mt. Mercy	84	83 @Wartburg	55	48 @Wisconsin	76
UNI 1975-76 (16-3)	Opp	58 William Penn	93	67 St. Ambrose	51	58 Southwest Missouri	81
84 Drake	39	86 Wartburg	90	54 @Nebraska-Omaha	71	State	
53 William Penn	58	50 Iowa	95	72 @Wyoming	79	57 Wichita State	100
63 Wartburg	46	58 Grand View	104	71 Southwest Missouri	66	51 @Eastern Illinois	77
80 NIACC	74	64 Luther	75	State		47 @Southern Illinois	79
71 Graceland	40	59 South Dakota	81	78 Wisconsin-Milwaukee	55	65 Indiana State	68
78 Mt. Mercy	69	58 Wisconsin-LaCrosse	106	80 Loras	66	60 Illinois State	80
70 Iowa Wesleyan	46	62 Drake	90	87 @Marycrest	59	41 @Drake	85
81 Luther	53	69 Simpson	71	66 @Augustana (IL)	52	55 @Bradley	104
77 Iowa State	50	64 Iowa State	89	72 Grand View	76	63 Western Illinois	88
77 Wartburg	47	43 Drake	107	73 @South Dakota State	43	37 Southern Illinois	83
70 Northwest Missouri	66	51 Iowa State	85	66 @Augustana (SD)	60	57 Eastern Illinois	86
78 Central Missouri	68	UNI 1979-80 (5-20)	Opp	71 @Central	64	42 @Illinois State	75
60 Luther	68	72 @Dubuque	55	71 @Grand View	63	49 @Indiana State	70
74 Grand View	70	59 @Central	62	71 @North Central	66	68 Drake	88
66 Clarke	38	69 @South Dakota State	64	51 @Northern Illinois	58	95 Western Illinois	88
74 Luther	64	55 @South Dakota	63	74 Luther	42	76 Bradley	77
101 Northwestern	48	57 Iowa State	80	72 @Northern State	67	59 @Wichita State	88
35 Grand View	79	66 Eastern Illinois	85	51 @Grand View	52	59 @Southwest Missouri	83
58 William Penn	75	49 Luther	57	68 Iowa	74	State	
		53 @Drake	77	95 Marycrest	64	UNI 1984-85 (5-23)	Opp
UNI 1976-77 (10-10)	Opp	62 Northern Illinois	84	79 Northwestern	55	46 @St. Ambrose	72
62 Wartburg	37	51 William Penn	91	89 Northeast Missouri	72	52 @Wisconsin	61
70 Wisconsin-LaCrosse	73	80 Western Illinois	84	State		60 @Iowa State	97
70 Illinois State	55	73 @Emporia State	93	74 Central	53	53 St. Cloud State	84
73 Luther	57	69 @Pittsburg State	79	71 @Wisconsin-Milwaukee	61	60 Eastern Washington	80
78 Graceland	39	59 @Northwest Missouri	79	68 @Marquette	72	65 Illinois-Chicago	84
54 Drake	76	State		81 Upper Iowa	62	62 Loyola	80
82 Mt. Mercy	66	71 @Eastern Illinois	100	65 St. Ambrose	71	67 Bradley	99
64 Iowa Wesleyan	45	75 @Western Illinois	89	68 Northeast Missouri	60	69 Western Illinois	103
38 Wartburg	39	60 St. Ambrose	65	State		77 Grand View	73
65 NIACC	49	59 @Nebraska-Omaha	73	58 @William Penn	67	80 Drake	79
48 William Penn	65	78 Marycrest	57	59 @Southeast Missouri	56	59 DePaul	77
65 Iowa State	81	64 St. Cloud State	67	State		51 @Southern Illinois	53
74 Grand View	72	43 @William Penn	77	UNI 1982-83 (17-11)	Opp	59 @Eastern Illinois	79
71 Luther	73	57 @Luther	50	78 @Nebraska-Omaha	62	65 Southwest Missouri	89
58 Wisconsin-LaCrosse	60	85 Loras	57	57 @Augustana (SD)	45	State	
62 (Unknown)	66	87 South Dakota	89	78 @St. Francis	58	75 Wichita State	89
69 Central Michigan	48	69 @St. Ambrose	85	55 @Oklahoma City	62	65 @Illinois State	99
70 Simpson	64			58 @Wisconsin-LaCrosse	70	71 @Indiana State	83
58 Luther	74	UNI 1980-81 (18-10)	Opp	62 St. Cloud State	58	81 @Drake	114
73 Iowa State	82	84 Wartburg	51	69 Mankato State	71	82 Loras	52
		74 Southwest Missouri	71	75 @St. Ambrose	57	76 Eastern Illinois	80
UNI 1977-78 (4-17)	Opp	State		74 William Penn	52	57 Southern Illinois	68
44 Wartburg	47	63 @Drake	91	78 Western Illinois	47	56 @Wichita State	55
50 William Penn	78	90 Loras	43	77 Mt. Mercy	48	68 @Southwest Missouri	98
57 Luther	67	80 Mankato State	67	73 @Northeast Missouri	63	State	
55 St. Cloud State	57	78 Eastern Illinois	70	State		58 Indiana State	62
71 Iowa State	82	75 @Northeast Missouri	74	65 @Iowa	66	68 Illinois State	98
42 Wisconsin-LaCrosse	75	State		76 Marquette	45	74 @Bradley	87
50 Illinois State	91	100 @Marycrest	81	91 Illinois-Chicago	72	96 @Western Illinois	86
63 Mt. Mercy	73	65 Southwest State (MN)	46	61 @Central	73		
90 Simpson	87	76 @Northern Illinois	86	76 @Grand View	79		
54 Iowa	74	87 Concordia	54	56 @St. Cloud State	72		
79 Grand View	59	75 Northeast Missouri	79	83 @Winona State	51		
58 Wartburg	60	State		60 @Northern State	74		
44 Drake	74						
68 North Dakota	50						



UNI	1985-86 (9-18)	Opp	UNI	1986-87 (6-20)	OPP	UNI	1987-88 (9-17)	OPP	UNI	1988-89 (7-18)	OPP
65 (n)	Nevada-Las Vegas	79	84	Maryland-Baltimore Co.	68	76	@ Stetson	82	42	St. Louis	67
73 (n)	Texas-El Paso	65	41	@ Iowa State	76	72	@ Florida Southern	55	73	Arkansas State	89
73	Montana State	69	72	@ Northern Illinois	86	86	Loras	66	54 @	Wisconsin-Green Bay	80
48	Wisconsin	72	54	Missouri	85	72	@ Creighton	113	56	Colorado State at UW-GB	60
70	Iowa State	84	95	Illinois-Chicago	84	73	@ Illinois at Chicago	55	68	Marquette	61
68	William Penn	76	76	Chicago State	82	68	@ Chicago State	48	65	Illinois at Chicago	55
89	Winona State	77	64	Drake	61	66	Iowa State	88	62	Southwest Missouri State	73
74 @	Western Illinois	72	78	@ Eastern Illinois	87	54	@ Wichita State	103	84	Wichita State	77
63 @	Bradley	75	68	@ Southern Illinois	98	66	@ Southwest Missouri State	85	59 @	Eastern Illinois	69
64	Illinois State	86	65	Illinois State	81	66	@ Southern Illinois	71	43 @	Southern Illinois	56
72	Indiana State	73	84	Indiana State	78	72	Illinois State	86	67	Indiana State	72
88	Loras	70	81	@ Western Illinois	75	72	Indiana State	85	68	Illinois State	93
76	Drake	86	68	@ Bradley	86	87	@ Eastern Illinois	78	95	Chicago State	37
61 @	Wichita State	78	72	Wichita State	95	66	@ Southern Illinois	79	72 @	Drake	108
82 @	Southwest Missouri State	81	82	Southwest Missouri St.	93	39	@ Western Illinois	75	57 @	Bradley	60
			64	Southern Illinois	87	87	@ Indiana State	85	83 @	Western Illinois	101
87	Eastern Illinois	78	70	Eastern Illinois	81	72	@ Illinois State	89	59	Southern Illinois	79
47	Southern Illinois	84	75	Creighton	82	53	@ Drake	77	91	Eastern Illinois	81
50 @	Indiana State	85	70	@ Indiana State	81	80	@ Indiana State	85	65 @	Illinois State	83
62 @	Illinois State	83	59	@ Illinois State	79	67	@ Illinois State	89	67 @	Indiana State	75
77	St. Ambrose	69	82	Bradley	90	58	Southern Illinois	60	61	Drake	70
60 @	Drake	97	56	Western Illinois	52	75	Eastern Illinois	90	77	Western Illinois	86
80	Southwest Missouri State	74	63 @	Southwest Missouri St.	95	75	@ Western Illinois	72	76	Bradley	62
			55	@ Wichita State	75	72	@ Bradley	98	83 @	Wichita State	78
57	Wichita State	88	64	@ Marquette	78	61	Wisconsin-Green Bay	54	64 @	Southwest Missouri State	69
40 @	Southern Illinois	69	61	@ Drake	90		Drake	67			
56 @	Eastern Illinois	80				52	Southwest Missouri State	80			
75	Bradley	98				90	Wichita State	58			
71	Western Illinois	72									





# Panther History vs. All Opponents

Opponent	G	W	L	First Game	Last Result	
					UNI	Opp
Arkansas State	1	0	1	1988-89	73	89
Augustana (IL)	2	1	1	1980-81	66	52
Augustana (SD)	3	2	1	1981-82	71	72
Bradley	12	2	10	1983-84	76	62
Buena Vista	1	1	0	1974-75	86	43
Central (IA)	4	2	2	1979-80	61	73
Central Michigan	1	1	0	1976-77	69	48
Central Missouri	5	2	3	1975-76	61	88
Chicago State	3	2	1	1986-87	95	37
Clark	1	1	0	1975-76	66	38
Colorado State	1	0	1	1988-89	56	60
Concordia	1	1	0	1980-81	87	54
Creighton	2	0	2	1986-87	72	113
DePaul	2	0	2	1982-83	59	77
Dordt	1	1	0	1974-75	64	49
Drake	21	3	18	1975-76	61	70
Dubuque	1	1	0	1979-80	72	55
Eastern Illinois	15	3	12	1979-80	91	81
Eastern Washington	1	0	1	1984-85	60	80
Emporia State	1	0	1	1979-80	73	93
Florida Southern	1	1	0	1987-88	72	55
Graceland	3	3	0	1974-75	78	39
Grand View	11	6	5	1974-75	77	73
Illinois at Chicago	6	4	2	1982-83	65	55
Illinois State	15	1	14	1976-77	65	83
Indiana State	12	1	11	1983-84	67	75
Iowa	7	1	6	1974-75	64	71
Iowa State	19	5	14	1974-75	66	88
Iowa Wesleyan	3	2	1	1974-75	64	45
Lincoln (IL)	1	0	1	1980-81	71	82
Loras	7	7	0	1979-80	86	66
Loyola (IL)	2	0	2	1983-84	62	80
Luther	16	5	11	1974-75	74	42
Mankato State	2	1	1	1980-81	69	71
Marquette	4	2	2	1981-82	68	61
Marycrest	4	4	0	1979-80	95	64
Maryland-Baltimore County	1	1	0	1986-87	84	68
Minnesota-Duluth	1	1	0	1980-81	73	58
Missouri	2	0	2	1983-84	54	85
Montana State	1	1	0	1985-86	73	69
Morningside	1	1	0	1980-81	70	60
Mt. Mercy	6	4	2	1975-76	67	52
Nebraska-Omaha	3	1	2	1979-80	76	82
Nevada-Las Vegas	1	0	1	1985-86	65	79

Opponent	G	W	L	First Game	Last Result	
					UNI	Opp
North Central	1	1	0	1981-82	71	66
North Dakota	1	1	0	1977-78	68	50
North Iowa Area CC	4	3	1	1980-81	69	87
Northeast Missouri St.	5	3	1	1980-81	73	63
Northern Illinois	5	1	4	1979-80	72	86
Northern Michigan	1	0	1	1978-79	64	75
Northern State	2	1	1	1981-82	60	74
Northwestern	5	4	1	1974-75	79	55
Northwest Missouri St.	2	1	1	1975-76	59	79
Oklahoma City	4	0	1	1982-83	55	62
Pittsburg (KS) State	1	0	1	1979-80	69	79
St. Francis (IL)	1	1	0	1982-83	78	58
St. Louis	2	1	1	1982-83	42	67
Simpson	4	3	1	1976-77	86	60
South Dakota	4	1	3	1977-78	87	89
South Dakota State	2	2	0	1979-80	73	43
Southeast Missouri St.	1	1	0	1981-82	59	56
Southern Illinois	12	0	12	1983-84	59	79
Southern Illinois-Edwardsville	1	1	0	1982-83	81	59
Southwest Missouri St.	14	5	9	1980-81	64	69
Southwest State (MN)	1	1	0	1980-81	65	46
St. Ambrose	9	3	6	1979-80	46	72
St. Cloud State	9	1	8	1977-78	53	84
Stetson	1	0	1	1987-88	76	82
Texas-El Paso	1	1	0	1985-86	73	65
Upper Iowa	1	1	0	1981-82	81	62
Wartburg	12	7	5	1974-75	83	55
Western Illinois	15	7	8	1979-80	77	86
Westmar	1	1	0	1974-75	91	53
Wichita State	12	4	8	1983-84	83	78
William Penn	12	1	11	1974-75	68	76
Winona State	2	2	0	1982-83	89	77
Wisconsin	3	0	3	1983-84	48	72
Wisconsin-Eau Claire	1	1	0	1978-79	62	52
Wisconsin-Green Bay	2	1	1	1987-88	54	80
Wisconsin-La Crosse	8	0	8	1974-75	58	70
Wisconsin-Milwaukee	3	3	0	1981-82	81	80
Wisconsin-Stevens Point	1	1	0	1980-81	66	61
Wyoming	1	0	1	1981-82	72	79





# All-Time Roster

## A

Abbott, Carol, 1975-76  
Abbott, Cathy, 1977-78  
Amrhein, Karen, 1989  
Anderson, Laurie, 1975  
Andrieni, Beth,  
1978-79-80

## B

Bachman, Debbie,  
1976-77  
Bacus, Donna, 1976  
Bainbridge, Dana, 1977  
Baker, Sandra, 1975-76  
Bates, Cathy, 1984-85  
Beavers, Sue, 1987  
Benson, Janeen, 1976-77  
Berger, Jennifer, 1982  
Bowers, Cindy,  
1981-82-83-84  
Braun, Diane, 1975-76  
Breck, Teri, 1981  
Burns, Sue, 1975

## C

Charipar, Lisa, 1977  
Combs, Celeste,  
1981-82-83-84  
Cook, Colette, 1978  
Cuvelier, Lynn, 1984

## D

Davis, Betty,  
1980-81-82-83  
Diercks, Jenny,  
1975-76-77  
Drenth, Deb,  
1980-81-82-83  
Duhrkopf, Lori, 1976-77

## F

Finn, Marcia, 1975  
Fratzke, Brenda, 1984  
Freshwater, Lori, 1984  
Frieden, Jo, 1979

## G

Garman, Laura, 1984  
Gebert, Kris, 1982  
Geske, Lisa,  
1980-81-82-83  
Gibbs, Kim, 1978  
Gilbert, Leann, 1979  
Goodwin, Mary, 1981-82  
Gordon, Robbin, 1982  
Gorman, Karen, 1985  
Grabowski, Sandy,  
1986-87-88-89  
Grady, Becky, 1982-83  
Green, Marcia, 1981  
Grove, Sue, 1980-81

## H

Hach, Lynn, 1985  
Hanson, Allegra, 1977-78  
Hanson, Cindy,  
1983-84-85  
Harmening, Rachel,  
1977-78-79  
Harms, Cindy,  
1986-87-88-89  
Harper, Kristi, 1975  
Hensley, Kristi, 1977  
Hernandez, Carmen,  
1978-79-80  
Hogen, Carol, 1982-83  
Huebner, Susan,  
1975-76-77  
Huffman, Kris,  
1986-87-88-89

## I

Ira, Tess, 1986

## J

Jameson, Jill, 1989  
Jennings, Linda, 1976  
Joachim, Pat, 1975

## K

Kadick, Cindy, 1981-82  
Kalec, Vaune, 1979  
Kappel, Brenda,  
1983-84-85-86  
Kelly, Molly, 1987-88-89  
Kennedy, Theresa, 1978  
Knapp, Lori, 1983  
Knapp, Robyn, 1986-87  
Kolstedt, Kathy, 1988-89  
Konigsmark, Kathy,  
1980-81  
Kopriva, Diane, 1983  
Krug, Emilie, 1980

## L

Lambert, Karla, 1979  
Larson, Cindy, 1978  
Laughlin, Lisa,  
1981-82-83-84  
Leavens, Jan, 1981  
Luett, Sherri, 1976-77

## M

Magee, Laurie, 1980  
McCartney, Kris,  
1975-76-77-78  
McDonald, Michelle,  
1976  
Messerschmidt, Janet,  
1976-77  
Miller, Nancy, 1975-76  
Miller, Stephanie, 1985  
Moeller, Jo, 1975-76  
Mosher, Ann, 1979  
Mosley, Loretha, 1988-89

## N

Neal, Connie, 1978  
Nelson, Krista, 1979-80

## O

Otten, Anne, 1985-86

## P

Parks, Theresa,  
1976-77-78  
Peelen, Dianne, 1987-88  
Peeler, Jackie, 1984  
Philippson, Mary,  
1976-77-78

## R

Reynolds, Phyllis, 1980  
Rickert, Ellen, 1976  
Risvold, Laura,  
1977-78-79

Roberts, Diane,  
1985-86-87-88

Rogers, Lois, 1979  
Rohde, Nicki, 1987-88-89  
Rolinger, Cami, 1986-87  
Ropa, Esthyr, 1983  
Roquet, Laura, 1982  
Runge, Deann, 1985

## S

Saunders, Deborah,  
1975  
Sayles, Tracy, 1983  
Schebler, Tami,  
1981-82-83-84  
Schiltz, Karla, 1978-79  
Schroeder, Paula,  
1977-78-79  
Schulewitz, Stephanie,  
1984  
Shafer, Chris,  
1986-87-88-89  
Shogren, Kathy, 1975-76  
Siebels, Lori, 1981  
Sir, Mary, 1979  
Smythe, Kim,  
1985-86-87-88  
Stamper, Jan, 1978  
Steiner, Linda, 1989  
Stockman, Pat,  
1975-76-77  
Stoffregen, Erin, 1986  
Strub, Lisa, 1982-83

## T

Tiarks, Lynette, 1980-81  
Tollakson, Nanette, 1977  
Troyna, Donna, 1975  
Tyler, Sue, 1980

## U

Ubben, Gwen,  
1981-82-83

## V

Vanderbeek, Paula, 1978

## W

Wahlstrom, Barb,  
1975-76-77  
Walker, Helen,  
1975-76-77-78  
Wentzien, Tracy, 1978  
Wiebold, Rhonda,  
1987-88-89  
Wilson, Chris, 1983-84  
Wilson, Jan, 1979  
Winchip, Nancy,  
1979-80-81  
Wisnieski, Barb, 1982

## Y

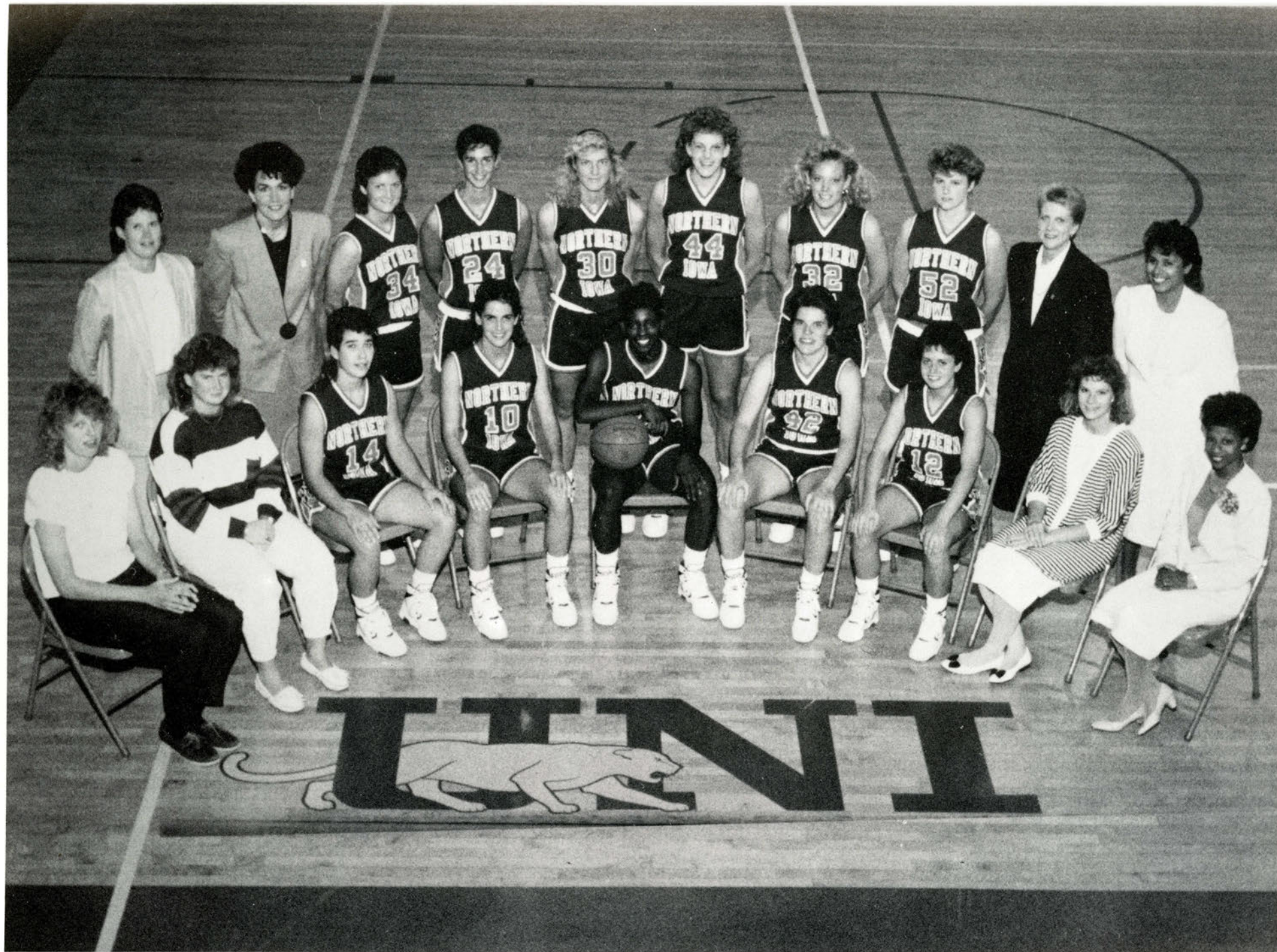
Young, Maura, 1980

## Z

Zaleski, Pat, 1979-80









# **1989-90 Women's Basketball Schedule**

<b>Date</b>	<b>Opponent</b>	<b>Site</b>	<b>Time</b>
<b>Nov. 12</b>	<b>BULGARIAN NATIONAL TEAM (Exhib.)</b>	<b>WEST GYMNASIUM</b>	<b>1:00</b>
<b>25</b>	<b>CENTRAL MISSOURI STATE</b>	<b>TBA UNI-DOME</b>	<b>5:25</b>
<b>Dec. 1</b>	<b>Southwest Texas State Tournament</b>	<b>San Marcos, TX</b>	<b>1:00</b>
			<b>5:00</b>
<b>2</b>	<b>Southwest Texas State Tournament</b>	<b>San Marcos, TX</b>	<b>1:00</b>
			<b>7:00</b>
<b>5</b>	<b>Iowa State</b>	<b>Ames, IA</b>	<b>7:00</b>
<b>8</b>	<b>Phoenix Classic Tournament</b>	<b>Green Bay, WI</b>	<b>6:00</b>
			<b>8:00</b>
<b>9</b>	<b>Phoenix Classic Tournament</b>	<b>Green Bay, WI</b>	<b>1:00</b>
			<b>3:00</b>
<b>28</b>	<b>Nebraska</b>	<b>Lincoln, NE</b>	<b>7:00</b>
<b>Jan. 2 *</b>	<b>BRADLEY</b>	<b>UNI-DOME</b>	<b>7:35</b>
<b>4 *</b>	<b>WESTERN ILLINOIS</b>	<b>UNI-DOME</b>	<b>7:35</b>
<b>6 *</b>	<b>DRAKE</b>	<b>UNI-DOME</b>	<b>5:25</b>
<b>11 *</b>	<b>Southern Illinois</b>	<b>Carbondale, IL</b>	<b>7:35</b>
<b>13 *</b>	<b>Eastern Illinois</b>	<b>Charleston, IL</b>	<b>7:35</b>
<b>18 *</b>	<b>SOUTHWEST MISSOURI STATE</b>	<b>UNI-DOME</b>	<b>7:35</b>
<b>20 *</b>	<b>WICHITA STATE</b>	<b>UNI-DOME</b>	<b>5:25</b>
<b>25 *</b>	<b>Illinois State</b>	<b>Normal, IL</b>	<b>7:00</b>
<b>27 *</b>	<b>Indiana State</b>	<b>Terre Haute, IN</b>	<b>2:00</b>
<b>Feb. 1</b>	<b>CHICAGO STATE</b>	<b>WEST GYMNASIUM</b>	<b>7:35</b>
<b>3 *</b>	<b>Drake</b>	<b>Des Moines, IA</b>	<b>7:30</b>
<b>8 *</b>	<b>EASTERN ILLINOIS</b>	<b>UNI-DOME</b>	<b>7:35</b>
<b>10 *</b>	<b>SOUTHERN ILLINOIS</b>	<b>UNI-DOME</b>	<b>5:25</b>
<b>16 *</b>	<b>Wichita State</b>	<b>Wichita, KS</b>	<b>7:30</b>
<b>18 *</b>	<b>Southwest Missouri State</b>	<b>Springfield, MO</b>	<b>1:30</b>
<b>20</b>	<b>CREIGHTON</b>	<b>UNI-DOME</b>	<b>7:35</b>
<b>22 *</b>	<b>INDIANA STATE</b>	<b>UNI-DOME</b>	<b>7:35</b>
<b>24 *</b>	<b>ILLINOIS STATE</b>	<b>UNI-DOME</b>	<b>5:25</b>
<b>Mar. 1 *</b>	<b>Western Illinois</b>	<b>Macomb, IL</b>	<b>5:30</b>
<b>3 *</b>	<b>Bradley</b>	<b>Peoria, IL</b>	<b>7:30</b>
<b>9</b>	<b>Conference Semi-finals</b>	<b>TBD</b>	<b>TBD</b>
<b>10</b>	<b>Conference Finals</b>	<b>TBD</b>	<b>TBD</b>

\* Gateway Collegiate Athletic Conference Games  
All Times Central