

1988

## Northern Iowa Women's Basketball '87-88

University of Northern Iowa

*Let us know how access to this document benefits you*

Copyright ©1987 Athletics, University of Northern Iowa

Follow this and additional works at: <https://scholarworks.uni.edu/amg>



Part of the [Higher Education Commons](#)

---

### Recommended Citation

University of Northern Iowa, "Northern Iowa Women's Basketball '87-88" (1988). *Athletics Media Guides*. 143.

<https://scholarworks.uni.edu/amg/143>

This Book is brought to you for free and open access by the Athletics at UNI ScholarWorks. It has been accepted for inclusion in Athletics Media Guides by an authorized administrator of UNI ScholarWorks. For more information, please contact [scholarworks@uni.edu](mailto:scholarworks@uni.edu).

**Offensive Materials Statement:** Materials located in UNI ScholarWorks come from a broad range of sources and time periods. Some of these materials may contain offensive stereotypes, ideas, visuals, or language.

# READY FOR *TAKEDOFF*



**Northern Iowa  
Women's Basketball  
'87-88**



## **1987-88 PANTHER BASKETBALL SCHEDULE**

Nov. 15	<b>Wales</b> (Exhib.) West Gym	7:35 p.m.	Jan. 14	<b>Bradley*</b> (West Gym)	7:35 p.m.
Nov. 21	<b>Alumni Game</b> (West Gym)	3:00 p.m.	Jan. 16	<b>Western Illinois*</b> (West Gym)	7:35 p.m.
Nov. 27	at Stetson	7:00 p.m.	Jan. 23	at Drake*	2:00 p.m.
Nov. 28	at Florida Southern	7:30 p.m.	Jan. 28	at Indiana State*	5:15 p.m.
Dec. 2	<b>Loras</b>	5:00 p.m.	Jan. 30	at Illinois State*	2:30 p.m.
Dec. 5	at Creighton	5:15 p.m.	Feb. 4	<b>Southern Illinois*</b>	7:35 p.m.
Dec. 10	at Illinois-Chicago	7:30 p.m.	Feb. 6	<b>Eastern Illinois*</b>	7:35 p.m.
Dec. 12	at Chicago State	2:00 p.m.	Feb. 11	at Western Illinois*	7:30 p.m.
Dec. 19	<b>Iowa State</b>	6:00 p.m.	Feb. 13	at Bradley*	7:30 p.m.
Dec. 29	at Wichita State*	7:00 p.m.	Feb. 18	<b>Wisconsin-Green Bay</b>	7:35 p.m.
Dec. 31	at Southwest Missouri State*	12:00 p.m.	Feb. 20	<b>Drake*</b>	5:25 p.m.
Jan. 2	<b>Illinois State*</b> (West Gym)	4:30 p.m.	Feb. 25	<b>Southwest Missouri State*</b>	7:35 p.m.
Jan. 4	<b>Indiana State*</b> (West Gym)	7:35 p.m.	Feb. 27	<b>Wichita State*</b>	7:35 p.m.
Jan. 7	at Eastern Illinois*	7:30 p.m.	Mar. 4	Gateway Tourney First Round	TBA
Jan. 9	at Southern Illinois*	7:35 p.m.	Mar. 9	Gateway Tourney Final Round	TBA

\*Gateway Conference Game

Home Games in Bold

## **University Quick Facts**



**Location:** Cedar Falls, IA 50614  
**Founded:** 1876  
**Enrollment:** 11,500  
**Nickname:** Panthers  
**Colors:** Purple and Old Gold  
**Conference:** Gateway Collegiate  
**Affiliation:** NCAA Division I  
**President:** Dr. Constantine Curris  
**Director of Athletics:** Robert Bowsby  
**Faculty Representative:** Jack Wilkinson  
**Athletic Trainer:** Terry Noonan  
**Director of Sports Information:** Nancy Justis  
**Ticket Manager:** Rob Shaw



# UNI Panthers 1987-88 Basketball



## Contents

Inside Front Cover	Schedule	19	Individual Stats
	University Facts		Highs and Lows
1	Table of Contents	20-21	School Records
	Media Notes	22-23	Year-By-Year Results
	Credits		UNI vs. 1987-88 Opponents
2-3	UNI Administration	24	The Gateway Conference
4-5	Preview	25	University of Northern Iowa
6-7	Coach Kimberly Mayden		UNI-Dome
	Assistant Coaches	26	Bradley, Chicago State, Creighton
8-9	Diane Roberts	27	Drake, Eastern Illinois, Florida
10	Molly Kelly and Kris Huffman		Southern
11	Cindy Harms and Kim Smythe	28	Illinois-Chicago, Illinois State,
12	Nicki Rohde and Rhonda Wiebold		Indiana State
13	Dianne Peelen and Sandy	29	Iowa State, Loras, Southern Illinois
	Grabowski	30	Southwest Missouri State, Stetson,
14	Chris Shafer, Loretha Mosley		Western Illinois
	and Kathy Kolstedt	31	Wichita State, Wisconsin-Green Bay
15	Rosters	32	UNI vs. All Opponents
	Personnel Breakdown	Inside Back Cover	Team Picture
16	1986-87 Review		Media Directory
17	1986-87 Game-By-Game		
18	1986-87 Results, Game-By-		
	Game Scoring/Rebounding		

## To the Media

Welcome to Northern Iowa women's basketball. Your host at the university will be Troy Dannen, student assistant in the Sports Information Office, in charge of women's basketball. Information regarding the squad is available by calling 319-273-3642 or Dannen at home, 319-277-4928. The Director of Sports Information, Nancy Justis, also is available at 319-273-6354 in the office or Assistant SID Roger Crimmins at 319-273-3642.

Game notes, statistics and a program will be available at the press table prior to each contest. A phone will be available for use to visiting SIDs after the game and a complete statistical packet will be ready approximately 15 minutes after the contest. A courtesy line for outside media can be arranged by calling Kelly Neff, Sports Director, KCFI Radio, Cedar Falls at 319-277-1918 at least one week prior to the game.

Our mailing address is Sports Information, University of Northern Iowa, NW Upper Dome, Cedar Falls, IA 50614.

## Credits

The 1987-88 Northern Iowa Women's Basketball Media Guide was designed and written by Troy Dannen, student assistant, and edited by Nancy Justis, Director of Sports Information. Photography was by Bill Witt, with general assistance from the UNI Office of Public Relations.

Special thanks go out to Sue Peterson and the public relations staff at Trans World Airlines, without which this guide would not have been possible. Also, thanks to captains Dave Voelkerding and Greg Dohrn, who graciously allowed us to use their cockpit for our media guide.

Printing by J'n'A Printing Inc., Cedar Rapids and typesetting by Type House of Iowa.

**ON THE COVER** — UNI Co-Captains Diane Roberts and Kim Smythe are "Ready for Takeoff" in the cockpit of a TWA jet.



---

# Northern Iowa Administration

---

**Dr. Constantine Curris** assumed the Presidency of the University of Northern Iowa in August of 1983, becoming only the seventh chief executive in the institution's 109-year history. Known as "Deno" to the University community, he has emphasized four major themes for the school's development: leadership in strengthening teacher education, development of the School of Business as part of Iowa's economic resurgence, a renewed emphasis upon quality in undergraduate education, and expansion of international studies to prepare students for life in the 21st Century.

Prior to assuming the UNI Presidency, Curris served 10 years as President of Murray State in Kentucky.

Curris received a bachelor's degree, magna cum laude, in political science with a minor in speech communication from the University of Kentucky in 1962. He received his master's in political science with a public administration emphasis from Illinois in 1965 and the Ed.D. degree in higher education with minors in student personnel services and public policy from Kentucky in 1967.

Curris currently serves as a Trustee of Midway College, a member of the National Small Business Development Center Advisory Board, a commissioner of the American Council on Education's Commission on Educational Credit and Credentials, a member of the Federal Relations Committee of the American Association of State Colleges and Universities and is a member of Rotary International. He recently served as Chairman of the Task Force on Teacher Education and Certification appointed by the Iowa State Board of Public Instruction and is now serving as a member of the First in the Nation in Education Foundation Governing Board on appointment by the Governor.

Curris is married to Jo Hern Curris, a tax attorney. They are the parents of Robert Page and Elena Diane.



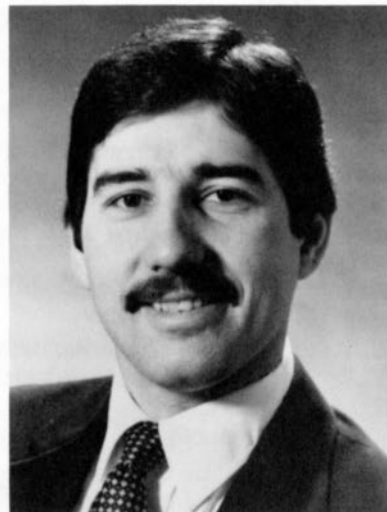
**Dr. Constantine Curris**

**Robert Bowlsby** was selected Director of Athletics in mid-February of 1984 after serving as Assistant Athletic Director for Facilities and interim athletic director when Stan Sheriff resigned the post in September of 1983.

A native of Waterloo, he is a 1970 graduate of West High School. He earned a bachelor's degree in health, physical education and recreation from Moorhead State in 1975 and a master's in recreation administration from the University of Iowa in 1978.

Bowlsby served as Assistant Director of Recreational Services at Iowa from 1978-81, working in facility management and with responsibilities for supervision of a wide variety of recreation and athletics facilities on campus.

He joined the UNI staff in April of 1981. His experience at UNI has been broadbased, including involvement in all areas of the intercollegiate athletics program and promotion of the UNI-Dome. He has worked with a variety of athletic events, special programs and entertainment attractions.



**Robert Bowlsby**

Since the time of his appointment as Director of Athletics, Bowlsby has been actively involved in the promotion and marketing of the athletics program, the development of the Athletics Hall of Fame and the formulation of the Gateway Collegiate Athletic Conference football division.

Bowlsby and his wife, Candice, have three children — Lisa, Matt, and Rachel.



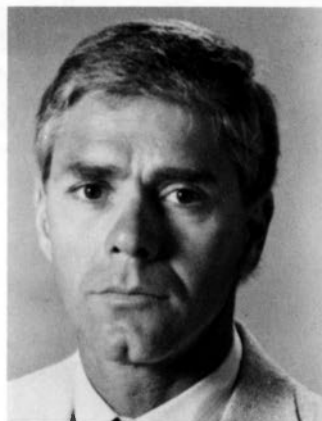
**John "Jersey" Jermier**  
**Associate AD**

In his eighth year as Associate Athletic Director, Jermier previously was Assistant Vice President and Director of Sales for Topeka Inn Management, Inc., in Topeka, KS. His athletic career began in 1959 when he was Head Football Coach at Postville, IA, and later served as Assistant Football and Basketball Coach at Coe College in Cedar Rapids, IA, where he also received his bachelor's degree. He received his master's from Iowa. Jermier was head football and baseball coach at Wayne State in Nebraska and assistant football coach in charge of defense at Colorado State in Fort Collins. His latest coaching job was at the University of Iowa where he was assistant coach and Assistant Athletic Director from 1971-76. Prior to his appointment at Topeka Inn Management, he was Director of Athletics at Kansas State University from 1976-78. He and his wife, Joanne, have three sons, John, Jim and Steve, and one daughter, Sara.



**Sandra Williamson —**  
**Associate AD**

In her 10th year in the Intercollegiate Athletic Program, Williamson joined the staff in July of 1978 following a merger of men's and women's athletics. She was the first Associate Athletic Director for Women at UNI and also assumed the duty of coaching UNI's women's basketball team, which she dropped seven years ago to devote more time to her administrative duties. Prior to joining the Panther staff, she spent six years at Carroll College in Helena, MT, as the women's basketball and volleyball coach. She received her doctorate degree from the University of Northern Colorado in Greeley in 1983.



**Lynn King**  
**Assistant AD-Facilities**

King gave up his sneakers for administration June 18, 1984, after coaching the Northern Iowa track and cross country teams nine years. He aided the Panthers in capturing 11 conference team championships, produced 25 All-Americans, including two national champions, was named Coach of the Year 11 times and was a referee at the Drake Relays. Prior to his coaching tenure at UNI, he served as head coach at Rochester Community College (Rochester, MN) and produced one national champion there in his four-year stint. A native of Cedar Falls, IA, he graduated from UNI in 1969 with a bachelor's degree in physical education and received his master's from UNI in 1971. He was a four-year starter on the UNI football team as a defensive back and was an all-around performer for Coach Jack Jennett in track and field. He and his wife, Jan, have two children — Jason, 14, and Kelly, 12. He is in charge of all maintenance, set-up and contractual arrangements for the UNI-Dome, both athletic and non-athletic events, in addition to assisting with the operation of other athletic facilities on campus.

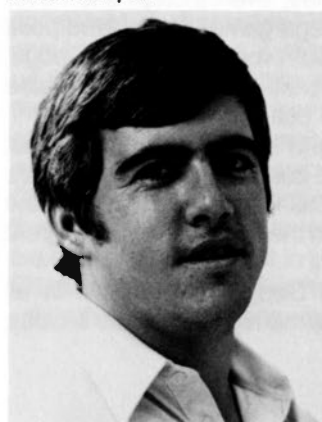
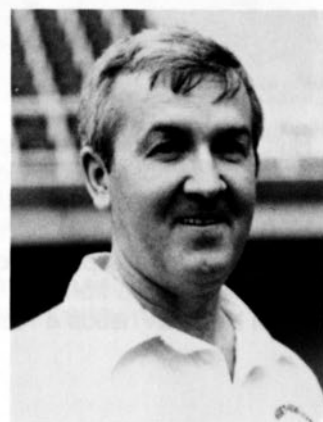


**Nancy Justis**  
**Director of**  
**Sports Information**

Justis became SID in 1979 after serving three years as the first full-time assistant at UNI. A native of Cedar Rapids, IA, she received her B.A. degree in journalism from the University of Iowa in 1973. After graduation, she worked for the Fort Collins (CO) Coloradoan before coming to UNI as an assistant editor in the Public Relations Office. She was a member of the Olympic Press Operations staff in Los Angeles in 1984 and the Pan American staff this summer in Indiana. She is a member of the College Sports Information Directors of America (CoSIDA), Women in Communications, Inc., and the U.S. Basketball Writers Assoc. CoSIDA has honored her with publication awards for football programs and brochures and wrestling brochures. Married to Robert Justis, who announces Panther football and basketball games, the couple has one daughter, Nicole.

**Dick Timmerman —**  
**Equipment Manager**

Timmerman joined the Panther staff in September of 1982 after spending 22 years as equipment manager and athletic trainer at Upper Iowa University in Fayette. He is responsible for overseeing equipment for all 19 intercollegiate sports with primary responsibilities for football and basketball. Besides his duties at Upper Iowa, he also worked with the Fayette ambulance service for 10 years. He is a certified EMTA (Emergency Medical Technician Assistant) and is a member of the Athletic Equipment Managers Association, a national organization.



**Terry Noonan —**  
**Athletic Trainer**

Noonan was named Athletic Trainer almost two years ago after serving as interim head trainer for one year. Prior to that, he had served as assistant trainer at UNI since 1983. From 1979-81 he was a graduate assistant at UNI and then spent the next two years as a physical fitness instructor at Hawkeye Institute of Technology. From 1981-83, he was head trainer at Columbus High School in Waterloo, IA, before joining UNI as a fulltime staff member. He is a nationally certified athletic trainer and has served as an examiner for the NATA Certification Test.

---

## Looking Ahead To 87-88

---

Panther head coach Kimberly Mayden came back to campus this fall grinning from ear to ear. She has five starters returning for the second straight season, two outstanding freshmen recruits, two excellent seniors, UNI's soon-to-be career leading scorer and a pair of highly motivated, young assistant coaches. Everything seems to be falling into place for a run at the upper division in the Gateway Conference.

UNI never has finished above eighth in the league and has suffered through four straight losing seasons. The players are hungry, the coaches are hungry, even the fans are hungry for a winning season. Dinner may be served by Mayden and her troops this season as the Panthers are "Ready for Takeoff."

### Guards

Traditionally, UNI has had difficulties at point guard. The staff never has recruited someone specifically to run the show. Instead, off guards were relied upon to guide the offense. This year, the biggest difference in the team will be the point guard spot with **Molly Kelly** (Oshkosh, WI) and **Loretha Mosley** (Fort Dodge, IA) looking to fill that role.

Kelly was looked upon to fill that vacancy last season, but suffered a knee injury that kept her out of the lineup the first 17 games of the season. She was replaced by Robyn Knapp who, although not a true point guard, ran the team well most of the season. Knapp is no longer with the team, but with Kelly's return to full strength and the expected contribution of freshman Mosley, the point spot should be stronger than ever.

Kelly will come into the season number one, with Mosley behind her. Kelly isn't lightning quick, but Mayden says she can handle the ball as well as anyone. Her ballhandling is her most valued asset, but she can also do much, much more. She is a "terrific" outside shooter when left alone and Mayden calls her passing unreal. She also will give the team a big boost in on-the-court leadership, according to Mayden. A coach looks for an extension of herself on the floor, and Kelly is that extension.

Mosley, on the other hand, is a freshman with all the potential in the world. She is jet quick, both in foot and hand speed, an excellent ball handler, and Mayden said she has some excellent leadership qualities, even though she never has set foot on the court in a college game. She played point guard in a five-player high school program at Fort Dodge, which is a big plus. Unlike most recruits out of Iowa, she is able to come in knowing what the full court game is all about.

Mayden said that with Kelly and Mosley in the point spot and junior Kris Huffman in the off-guard role, UNI could have one of the best backcourts in the league. She has all the confidence that the guards can run the team and expects great things out of the entire backcourt.

At off-guard, **Huffman** (Fort Dodge, IA) is solid in all aspects of the game. From the same high school as Mosley,



Huffman has rapidly developed an understanding of the game after playing six-on-six in high school. She is the best shooter on the team, according to Mayden, she is a steady ballhandler, and is number three in UNI history in assists. She will get some assistance from sophomore **Nicki Rohde** (Des Moines, IA), who will move up from her forward position into a guard spot when Huffman needs a rest.



## Forwards

Mayden doesn't run a two-forward, one-center offense like most coaches. She prefers to have three forwards in the game, each moving around in a motion offense and each charging hard to the boards. Rebounding was a problem for the forwards last year. Other than **Diane Roberts** (Eldora, IA), the other two spots averaged under 10 a game. That will improve this year, Mayden said. When it does, expect the inside game to take some of the pressure off the shooters, like Huffman and Roberts.

In looking at the forward spot, it doesn't take long to see Roberts. She is already the number two scorer in history at UNI and needs only 123 points to move into the top spot. She has been a model of consistency throughout her career and will again be relied upon heavily. She plays on the wing as much as possible but has led the team in rebounding each of her three years.

Rohde came on like gangbusters last year as a freshman and will see action all over the court. She can play any position and will be a wing forward if Mayden wants to put a small, quick lineup in, or can move to off guard if UNI needs a bigger, more powerful front line.

**Kim Smythe** (Cedar Rapids, IA), **Sandy Grabowski** (Crown Point, IN) and **Cindy Harms** (Allison, IA) all are battling with Rohde for the two forward spots opposite Roberts. Smythe is a senior co-captain with good leadership ability and good size as well. Grabowski has been inconsistent her first two years, but can be a dominant player at times inside. Harms has great post moves and is the best scorer of the three, but isn't a strong rebounder. All three play good defense and give the Panthers great depth at forward.

Mayden said the key to the forward spot will be rebounding and defense. There are a number of scorers on the team, but someone needs to come to the forefront in rebounding and play some hard-nosed defense for UNI to be successful down under. Having Mary Otten, an all-conference forward at Drake last winter, as an assistant coach will be a tremendous help, according to Mayden.

A bright spot in the forward court is versatility. Many different combinations are available depending upon the situation. A big, small or quick lineup is available to Mayden and increases the number of options.

## Conference

Illinois State and Southern Illinois appear to be the class of the league this season, Mayden said. Eastern Illinois could surprise some people, and any of the remaining teams in the league could jump up into the top four and advance into the conference tournament. The conference season starts a week earlier to accommodate the conference tournament.



## Schedule

The road will be hard this year for UNI. While some Division II schools have been added, only two pre-conference games will be at home, Loras and Iowa State. However, the final four games of the year all are at home and that may prove to be very important near the end of February. Some powerful teams dot the schedule, but Mayden feels her team will come through in good shape.

## What To Look For

If the Panthers are to be successful this season, a number of things must happen. First, the point guard must turn in a consistent performance. With two true point guards, that should happen. Next, outside shooting must improve to open up the inside game a little more. With Huffman, Roberts and the rest of UNI's bomber brigade having another year of experience, that could easily happen. Finally, the inside game needs to mature. The four players inside, along with reserve **Chris Shafer**, have a combined nine years of experience and they should know how to rebound and battle for position with the best of players. That in turn will open up the outside game. Sounds simple. The Panthers are "Ready For Takeoff" and when the season opens up, rest assured they'll be sky high.

# Head Coach Kimberly Mayden

The UNI coaching staff has a different look this season, but one thing that remains constant is Head Coach Kimberly Mayden. Mayden is entering her fourth season in Cedar Falls with perhaps her best squad. Her first three teams had records of 5-23, 9-18 and 6-20, but now she has a squad she has coached for three years and her ideas and philosophies should show through.

Mayden has been successful at two previous stops on the coaching trail and is building a UNI program up from near scratch in this, her third stop. She began coaching at North Montgomery High School in Crawfordsville, IN. Coaching basketball at any level in Indiana is a supreme challenge and Mayden was up to that challenge. Her first team finished 16-4 and won conference and sectional championships while making a regional appearance. During her second campaign, the team finished 16-7 and was rated 18th of over 400 schools in the state. That team also won conference and sectional titles and made a regional appearance.

Mayden coached a number of outstanding players at North Montgomery, some of whom went on to play Division I basketball. She had two players voted to Women's Varsity Sports Magazine's All-American team and three All-Staters. While at North Montgomery, Mayden was selected to coach the Fellowship of Christian Athletes All-Star Classic in 1980 and 1981. She also helped lead North Montgomery into prominence as a track and field power in Indiana as an assistant coach.

From there, she went to Bemidji State, Minnesota to pursue graduate work. She received her bachelor's degree in education in 1979 from Ball State and received her master's degree from Bemidji State in 1982. During that time, she assisted with the men's basketball team at Bemidji State.

Her first collegiate coaching stop was at Wayne State University in Michigan. She compiled records of 14-14 and 18-10 in her two years at the Division II school. Both teams finished third in the Great Lakes Conference. Her first team was nationally ranked in scoring margin and her second unit was ranked in the top five in the Great Lakes Region.

At Wayne State, Mayden coached two academic All-Americans as well as one player who finished in the top 10 in the nation in scoring. One of her players was an honorable mention All-American and three were All-Conference.

Finally, Mayden arrived in Cedar Falls to succeed J.D. Anderson. She has had to completely rebuild a program that finished 2-25 the year before her arrival. She went to freshmen, rather than junior college players, and took some lumps her first year. Since then, however, the Panthers have been very competitive. Mayden has a strong reputation for recruiting intelligent athletes. Seven of the 12 players on this year's team were members of the National Honor Society in high school.

Mayden has a great deal of camp and clinic experience. She hosted a camp at North Montgomery and has a team and individual camp at Northern Iowa. She also has attended many camps herself. She knows what it's like to be a college athlete. She played basketball and softball three years at Ball State.



Mayden doesn't want to predict how the season will go. With nearly everyone back, a very strong contingent of assistant coaches and two impressive freshmen, things never have looked better in Pantherland. The Panthers haven't had a winning season in four years — this finally may be the year.

## Mayden's Resume

### North Montgomery High School

1979-80	16-4	Sectional, Conference Champs
1980-81	16-7	Sectional, Conference Champs, ranked 18th

TOTAL 32-11

### Wayne State

1982-83	14-14	3rd in conference
1983-84	18-10	3rd in conference

TOTAL 32-24

### Northern Iowa

1984-85	5-23
1985-86	9-18
1986-87	6-20

TOTAL 20-61

Collegiate Total 52-85 (5 yrs.)

## Accomplishments

1979-81	Coached Fellowship of Christian Athletes All-Star Game (Twice)
	Coached two All-Americans
	Coached three All-Staters
	Coached eight All-Conference players
1982-84	Coached a player ranked top 10 nationally in scoring
	Coached two academic All-Americans
	Coached three All-Conference players
	Finished third in Great Lakes Conference (Twice)

---

# **UNI Assistants**

## **Jane McConnell And Mary Otten**

---



UNI assistant coach **Jane McConnell** replaces Terri Craft as Kimberly Mayden's head assistant coach this season. She is a familiar face to many lowans, having played basketball for Iowa State. She was a four-year starting guard for the Cyclones from 1981-1985. She was a standout athlete for the Cyclones, named defensive Player of the Year in 1983 and team captain during her senior season. She

also was presented the Iowa State Academic Athletic Scholarship award.

She was a four-time letterwinner at ISU and a member of the dean's list twice. She was a National Honor Society member in high school as well. During her high school days, she was a three-sport athlete at Crown Point (Indiana) High School, the same high school that UNI forward Sandy Grabowski graduated from. McConnell was senior Athlete of the Year at Crown Point and an All-Stater. She was Northwest Indiana High School Athlete of the Year and was a state qualifier in track and swimming.

After receiving her bachelor's degree in physical education in May of 1985, she went back to her home state to coach. She was a freshman basketball coach in 1986 and '87 and coached junior varsity teams in 1987. She also was the assistant varsity coach and assistant varsity track coach during the same period. All her coaching and teaching was done at Munster High School.

McConnell also is certified in water safety and is certified to teach K-12 in Indiana and Iowa. She directed a camp at Munster High School in June of 1986 and has instructed or participated in camps at the Universities of Notre Dame and Illinois, and at Iowa State.



**Mary Otten** is a familiar name to everyone associated with Gateway Conference basketball. She graduated last spring from Drake University where she was a four-year letterwinner for the Bulldogs. Also, her sister, Anne, was a brilliant guard for the Panthers during Mayden's first and second seasons at UNI.

Otten comes to the UNI staff for her first full time coaching assignment. She coached at Des Moines

Hoover High School, as a student at Drake, and also coached some at Mason City Newman High School.

Otten is one of few athletes who could compete in Division I in two different sports. She was a softball player for the Bulldogs and also a two-year starter in basketball.

She was a standout tennis and track athlete at Mason City Newman High School, earning three letters in track and one in tennis, along with nine softball and four basketball letters. She pitched her team into the 1982 state summer softball tournament, and, in basketball, averaged 29 points during her senior year at Newman. She had an outstanding basketball career at Drake as well, averaging double figures in scoring her final season.

She is a member of the Fellowship of Christian Athletes and Kappa Delta Pi. Her primary responsibilities are for the conditioning of the players during the pre-season. During the season, she will work with the post players, a position she played at Drake. Her experience against other teams in the Gateway should benefit the Panthers a great deal this season.



Manager Dawn Applegate





# 40 Diane Roberts

**5-11 Senior, Eldora-New Providence High School, Eldora, IA**

Born June 18, 1966... Accounting major... National Honor Society member... Led Northern Iowa in scoring each of her first three years... Averaged 19.3 ppg as a freshman and was unanimous All-Conference... Consistently averages seven rebounds a game... Holds six single game school records... Scored 40 against conference foe Illinois State two years ago... Holds 10 season records... Already has one career record, should break four more this year... Needs only 123 points to break the all-time career scoring mark of 1,449 held by Deb Drenth... Played six-on-six basketball in high school... Averaged over 40 points as a junior and over 45 as a senior in high school... Suffered a severe ankle injury in 1985-86 that kept her out of six games... Has started every game she has played since coming to UNI... Shot 83 percent from the free throw line last year... One of the hardest workers on the team... One of two co-captains along with Kim Smythe... Among leaders in three-point shooting last season in Gateway Conference... Not quick, but very headsy player on the court... Ninth all-time in field goal shooting and fifth all-time in free throw shooting at UNI.

## Career Highs

Points - 40  
Rebounds - 16  
Season Average - 19.3  
Season Rebounds - 7.4

## Career Stats

Year	G	FG	FGA	PCT	FT	FTA	PCT	REB	AVG	AST	PF-D	TP	AVG
Frosh	28	216	448	.482	109	161	.207	7.4	36	67-1	541	19.3	
Soph	21	140	354	.395	66	97	.680	141	6.7	43	53-2	346	16.5
Junior	26	163	410	.398	83	100	.830	183	7.0	47	60-1	439	16.9
<b>TOTALS</b>	<b>75</b>	<b>519</b>	<b>1212</b>	<b>.428</b>	<b>258</b>	<b>358</b>	<b>.721</b>	<b>531</b>	<b>7.1</b>	<b>126</b>	<b>180-4</b>	<b>1326</b>	<b>17.7</b>

## Roberts the Record Holder

### SINGLE GAME RECORDS

Field Goals Made - 17  
Field Goals Attempted - 31  
Three-Point Goals Made - 5  
Three-Point Goals Attempted - 8  
Three-Point Goal Pct. - 62.5 (5-8)  
Consecutive Field Goals - 14

### SEASON RECORDS

Field Goals Made - 216  
Field Goals Attempted - 448  
Free Throws Made - 109  
Free Throws Attempted - 161  
Free Throw Percentage - 83.0  
Three-Point Goals Made - 30  
Three-Point Goals Attempted - 81  
Three-Point Goal Percentage - 37.0  
Points - 541  
Scoring Average - 19.3

### CAREER RECORDS (Held)

Field Goals Attempted - 1,212

### CAREER RECORDS (Likely To Break)

Field Goals Made - Needs 40  
Free Throws Made - Needs 73  
Free Throws Attempted - Needs 91  
Scoring - Needs 123

---

## By Diane Roberts

Being the oldest child in my family, I didn't have anyone to follow. I wasn't involved in athletics until I was in junior high. The first sport I played was basketball and I ended up participating in softball and track in junior high, as well. By the end of the year, however, I realized basketball was the sport I truly loved.

Throughout my high school career, I continued to participate in volleyball, basketball, track, tennis and softball. I worked extra after practice in each sport, but I put much more emphasis on basketball.

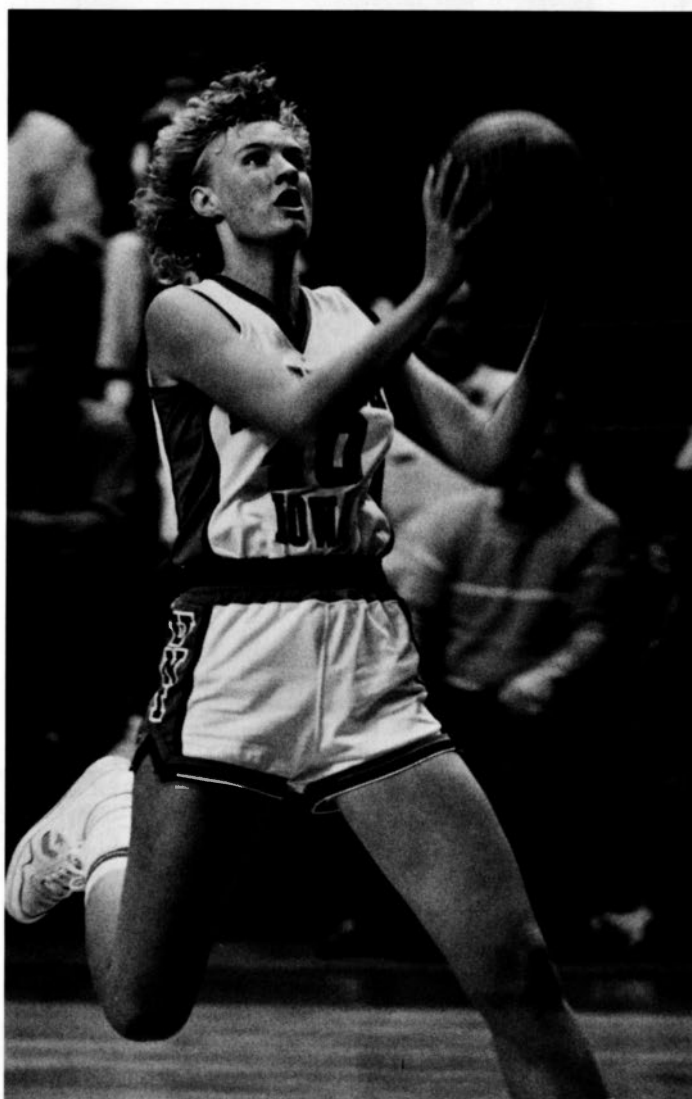
My family always has been a tremendous help to me in developing my basketball skills. My father used to go outside in our driveway and rebound and pass the ball to me while my brother, Mark, and sister, Kathy, guarded me. They got me used to "contact." They also helped me a lot by playing one-on-one with me, and we even got our dad to join us for some two-on-two.

I spent most of my free time in the summer working on increasing my shooting range, faking and driving, and learning new moves. After all that work, it was time for my high school career to begin. It was a rewarding four years from both an individual and team standpoint. Each year, our team's record improved, although we never made it to the state tournament, which was a big disappointment.

During my last year, it was time to start looking at colleges. I looked mostly at small schools so I could play both basketball and volleyball. However, when I received the opportunity to continue my basketball career at a Division I school, I quickly took it. Basketball wasn't my only reason for choosing UNI, though. I planned to enter the business world after graduation, and the business department at UNI is one of the best around. Also, Cedar Falls is close (40 miles) to my home, Eldora, so my family could come to the games.

As my college career began, it was time for one major change. I had played six-on-six in high school, and now I had to play five-on-five. My first year was filled with many surprises. I didn't realize what was expected of a Division I athlete. The biggest adjustment was in learning how to play defense, something I never had to do much of in high school, being a forward. I ended the year very satisfied with my performance, especially offensively. I had come into my freshman year not expecting to play much, and I ended up playing every game.

My second year didn't go as well. I wasn't real happy with my offensive performance, but my defensive skills improved. The year ended early when I severely sprained my ankle and had to have surgery. I had to come back for my junior season after a long, slow rehabilitation process. I wanted to be more consistent both offensively and defensively, and accomplished that.



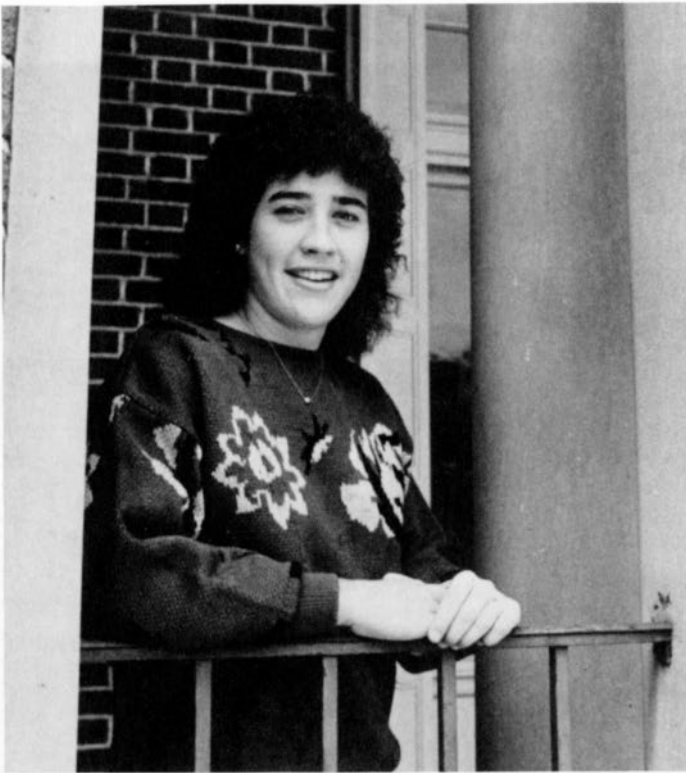
Now, it's time for my fourth and final year, and I really want to leave on a positive note. I want our team to improve each game and work together. For myself, I just want to give it my best shot one last time. I have to start thinking of my future. I won't be ready to completely leave basketball behind, so I hope to change roles, from player to coach, while becoming a business education teacher.

I appreciate the opportunity that Coach Mayden gave me four years ago, and I hope I can repay her and the university by helping the team to its best season yet.

### Roberts in the Gateway

(Career) (Games played, PPG, RPG)  
Bradley (5, 15.4, 6.2)  
Drake (6, 18.0, 8.3)  
Eastern Illinois (5, 21.8, 8.0)  
Illinois State (6, 21.5, 6.5)  
Indiana State (6, 12.2, 6.2)  
Southern Illinois (5, 20.6, 5.4)  
Southwest Missouri St. (5, 20.8, 4.8)  
Western Illinois (5, 14.2, 8.8)  
Wichita State (5, 20.0, 6.8)





## 14 Molly Kelly

**5-6 Sophomore, Lourdes Academy, Oshkosh, WI**

Born April 26, 1968... Major is Physics... National Honor Society member... Plans to spend her fifth year of college in pursuit of an engineering degree... Sat out all but the last nine games of last season after a knee injury in a pre-season game... Wasn't redshirted last year because of her career aspirations... Very intelligent on the floor and in the classroom... A late recruit last year... The first true point guard Mayden has recruited... Great ballhandler and good shooting range... Deceptively quick... Should team with Loretha Mosley to give the Panthers their best players in the last few years at point guard... Conference MVP in high school... Averaged 13 points and five assists at Lourdes Academy... Also played softball, soccer, volleyball and ran cross country in high school... Scored 14 points in her limited action last year, but showed she has the talent to be the starting point guard... Highs of five points and five rebounds last year, both against Wichita State... Loaded with potential... Hit on 2-of-4 three pointers.

Career Stats	Year	G	FG	FGA	PCT	FT	FTA	PCT	REB	AVG	AST	PF-D	TP	AVG
	Frosh	9	6	23	.261	0	1	.000	11	1.4	11	10-0	14	1.8



## 22 Kris Huffman

**5-9 Junior, Fort Dodge High School, Fort Dodge, IA**

Born April 3, 1967... Education major... National Honor Society and Fellowship of Christian Athletes member... Played on state championship teams in volleyball and basketball in high school... Miss Iowa Basketball after her senior season at Fort Dodge... One of the Top 10 players in USA by Converse in 1985... Averaged 26 points and 7.2 assists as a senior along with a 3.96 GPA... Suffered a shooting slump much of last year but rebounded at the end with a season-high 21 points against Drake... Averaged 11.8 ppg as a freshman and 8.7 last year... School record 107 assists as a freshman... Career high 30 points against Drake as a freshman... Best pure-shooter on team... Shot only five three-pointers, netting two last year, but one of the best long range shooters on team... Needs to look for shot more and her scoring average could skyrocket... Great poise and self-control on the court... Is in great physical shape... Good ballhandler in number two guard spot... Was forced to play some point guard each of her first two years... Played six-on-six in high school... Very good rebounder... Third in UNI history with 192 assists... Shot 75 percent from the line each of her first two years.

Career Stats	Year	G	FG	FGA	PCT	FT	FTA	PCT	REB	AVG	AST	PF-D	TP	AVG
	Frosh	27	134	309	.433	51	68	.750	132	4.9	107	65-1	319	11.8
	Soph	26	97	233	.416	30	40	.750	79	7.0	85	82-4	226	8.7
	TOTALS	53	231	542	.426	81	108	.750	211	4.0	192	147-5	545	10.3





## 24 Cindy Harms

**6-0 Junior, Allison-Bristow High School, Allison, IA**

Born February 5, 1967...Physical Education major... Cheerleading, band, track and volleyball were activities in high school... Averaged 46.8 ppg as a senior in high school... Played six-on-six... All-State... Scored all 67 of her team's points in a game once... Had a sluggish start as a freshman while adapting to full court game... Has shot over 47 percent from the field her first two years... Her defense is improving every day, according to Mayden... Can score from the wing or inside... Has the best post moves on the team... Scored career high 28 against Eastern Illinois... Developed some foul troubles last year... Should be a top contender for the center spot... Second on team with an 11.2 scoring average last year... Shot over 71 percent from the line last year... Great quickness inside... Fifth on team with 7.3 ppg as a freshman... Progressed into the five-player game very well during the last two years... Needs more production on the boards as a center... In double figures 13 times last year... Season high seven rebounds against Illinois State... Excellent jumping ability.

### Career Stats

Year	G	FG	FGA	PCT	FT	FTA	PCT	REB	AVG	AST	PF-D	TP	AVG
Frosh	25	78	167	.467	27	51	.529	102	4.1	8	63-4	183	7.3
Soph	26	115	235	.489	62	87	.713	88	3.4	16	99-9	292	11.2
<b>TOTALS</b>	<b>51</b>	<b>193</b>	<b>402</b>	<b>.480</b>	<b>89</b>	<b>138</b>	<b>.645</b>	<b>190</b>	<b>3.7</b>	<b>24</b>	<b>162-13</b>	<b>475</b>	<b>9.3</b>



## 32 Kim Smythe

**6-0 Senior, LaSalle High School, Cedar Rapids, IA**

Born March 3, 1966...Business major... National Honor Society member... Started six games last season... Has played in every game but one since coming to UNI... All-State in high school... Played wing as a freshman, moved inside her final three years... Never in double figures last year... Season highs of nine points and nine rebounds... Started 18 games as a sophomore... Very steady player inside... Continues to develop aggressiveness... Attitude is a big asset, according to Mayden... Should end career with over 400 points and 300 rebounds... Played volleyball, softball and ran track in high school... Can play center or forward, so very valuable this season... Averaged 3.3 ppg last season after career high 5.2 as a sophomore... Has good range on her jump shot... Improves as much as anyone on the team from year-to-year... Has a career high of 11 rebounds... Good role player... Will not lead the team in scoring or rebounding, but isn't expected to... One of the best defenders on squad... Quick inside... Six-on-six player in high school.

### Career Stats

Year	G	FG	FGA	PCT	FT	FTA	PCT	REB	AVG	AST	PF-D	TP	AVG
Frosh	27	28	97	.288	22	43	.511	80	2.9	16	21-0	78	2.8
Soph	27	58	135	.430	24	44	.545	111	4.1	13	42-1	140	5.2
Junior	26	34	93	.366	18	31	.581	77	3.0	11	26-0	86	3.3
<b>TOTALS</b>	<b>80</b>	<b>120</b>	<b>325</b>	<b>.369</b>	<b>64</b>	<b>118</b>	<b>.542</b>	<b>268</b>	<b>3.4</b>	<b>40</b>	<b>89-1</b>	<b>304</b>	<b>3.8</b>



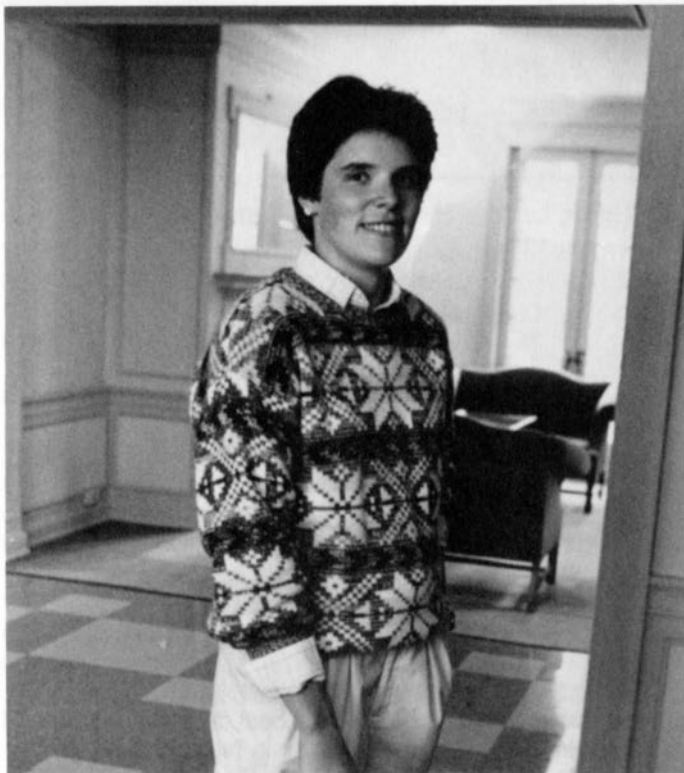
## 34 Nicki Rohde

**5-9 Sophomore, Hoover High School, Des Moines, IA**

Born July 4, 1968... Physical Education major... Excellent jumper... Played five-on-five in high school... Averaged 18 points and 10 rebounds as a senior and shot over 53 percent from the field... Very quick and aggressive... Compares to former UNI guard Anne Otten... Played in the Iowa All-Star game... Contributed as a freshman, playing in all 26 games, starting 21... Shot 41 percent from the field and hit on three three-pointers... A true small forward/off guard, but spent a great deal of time playing point guard... Will play the number two or number three spot this year... Scored in double figures 12 times... High game of 29 against Indiana State... Ten rebounds against Bradley... Has a very business-like approach to the game... Never out of control... 111 rebounds and 35 steals last year... Along with Loretha Mosley, one of the two best athletes on the team... Great personality and a hard worker... Was a state track qualifier three times and All-State in volleyball... Good shooter... Mayden says she is the type of player every team needs.

### Career Stats

Year	G	FG	FGA	PCT	FT	FTA	PCT	REB	AVG	AST	PF-D	TP	AVG
Frosh	26	97	235	.413	61	87	.701	111	4.2	57	43-0	258	9.9



## 42 Rhonda Wiebold

**5-8 Sophomore, Amana High School, Amana, IA**

Born November 11, 1967... Major is Accounting... National Honor Society member... Class valedictorian... High school MVP in softball two years and basketball three years... All-Conference in softball and basketball... Also in track and marching band in high school... Averaged 19 points and four rebounds in high school... Scored 36 in one game... Played six-on-six in high school... Was Phi Eta Sigma (freshman honor society) at UNI last year... Walked on last year and saw action in only seven games... Scored four points and had a pair of rebounds in minimal time... Is a very devoted player and works as hard as anyone on the team... Made the team as a walk-on last year and again this year... Can play the number two or the number three spot... Should see more playing time than last season.

### Career Stats

Year	G	FG	FGA	PCT	FT	FTA	PCT	REB	AVG	AST	PF-D	TP	AVG
Frosh	9	1	9	.111	2	3	.667	2	0.3	2	2-0	4	0.6



## 44 Dianne Peelen

**6-4 Sophomore, Nevada High School, Hume, MO**

Born January 23, 1968... Math major... Member of National Honor Society, Fellowship of Christian Athletes and Future Teachers of America... Came to UNI with great numbers... Averaged 16 points, 12 rebounds and five blocked shots as a senior... Team finished fourth in state... All-District and All-Area and was in the BC Top Sixty All-Star game in 1986... Biggest asset is defense and shot blocking ability... Big and still learning the college game... Played in nine games a year ago and averaged just under a point a game... Blocked four shots and grabbed 13 rebounds... Long arms give her tremendous ability to swat shots inside... Still developing her agility and offensive moves inside... Mayden looks to improve this season and perhaps she could develop into a threat for the Panthers... She is a true center... Good rebounder evidenced by her 13 rebounds in a very limited number of minutes.

### Career Stats

Year	G	FG	FGA	PCT	FT	FTA	PCT	REB	AVG	AST	PF-D	TP	AVG
Frosh	9	3	10	.300	1	2	.500	13	1.4	0	3-0	7	0.8



## 50 Sandy Grabowski

**6-0 Junior, Crown Point High School, Crown Point, IN**

Born April 15, 1967... Accounting major... Office Education Association member... Started 16 of 26 games last season after starting 23 as a freshman... Played in all 53 games since she arrived... Excellent shooter from the floor... 49.2 percent last season, 48.8 percent as a freshman... Up and down, but the strongest player underneath on the squad... Averaged 7.0 ppg as a freshman and 6.9 as a sophomore... Improved free throw shooting to 60 percent from 44 percent as a freshman... Set career highs in scoring with 20 against Maryland-Baltimore County and Marquette last season and 17 rebounds against Western Illinois two years ago... Foul prone as a freshman (fouled out 14 times) but cut that down to two a year ago... Moving out of center position into a power forward role... Quick hands inside and good shot selection... All-Semi-State in Indiana in high school... Her Crown Point High School team won two state titles and garnered a third place finish during her career... Double figures in rebounds three times last year, but had one or two boards five times.

### Career Stats

Year	G	FG	FGA	PCT	FT	FTA	PCT	REB	AVG	AST	PF-D	TP	AVG
Frosh	27	79	162	.488	32	73	.438	161	6.0	19	106-14	190	7.0
Soph	26	63	128	.492	53	88	.602	120	4.6	16	73-2	179	6.9
<b>TOTALS</b>	<b>53</b>	<b>142</b>	<b>290</b>	<b>.490</b>	<b>85</b>	<b>161</b>	<b>.528</b>	<b>281</b>	<b>5.3</b>	<b>35</b>	<b>179-16</b>	<b>369</b>	<b>7.0</b>





## 54 Chris Shafer

**6-4 Junior, Eddyville High School, Eddyville, IA**

Born September 23, 1967...Physical Education major...Member of FFA and Who's Who in Music...Participated in softball and track at Eddyville High School...Played in only nine games as a freshman walk-on, but saw action in 20 games last year...Has yet to start a game...Works very hard and makes a big contribution in practice as well as on the floor...Size is a big asset...Had 11 blocked shots last year...Scored only one point as a freshman, but had 18 a year ago...Played six-on-six in high school...Was weak in five-player game as freshman, but improved greatly last season and is now a prime contributor to the team...Had 30 rebounds a year ago...Usually saw action late in the game, but Mayden is not afraid to use her in tight situations this year...Big and strong inside...Received All-State mention in high school and averaged 10 rebounds a game...Played a lot of guard in high school...Quickness and speed have been slow to develop, but she now is ready to make a contribution...Will only play center...Most of her points are after offensive rebounds...Great work ethic and a true team player.

### Career Stats

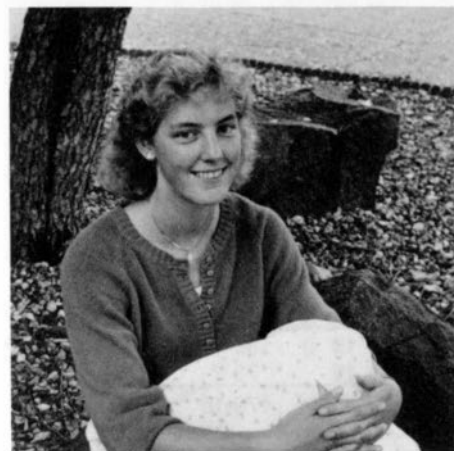
Year	G	FG	FGA	PCT	FT	FTA	PCT	REB	AVG	AST	PF-D	TP	AVG
Frosh	9	0	1	.000	1	3	.333	2	0.2	0	4-0	1	0.1
Soph	20	7	26	.269	4	8	.500	30	1.5	2	25-0	18	0.9
<b>TOTALS</b>	<b>29</b>	<b>7</b>	<b>27</b>	<b>.259</b>	<b>5</b>	<b>11</b>	<b>.455</b>	<b>32</b>	<b>1.1</b>	<b>2</b>	<b>29-0</b>	<b>19</b>	<b>0.7</b>



## 20 Loretha Mosley

**5-9 Freshman, Fort Dodge High School, Fort Dodge, IA**

Born April 21, 1969...Physical Education major...Comes to UNI as one of the top five-on-five players in the state last year...UNI won the recruiting battle over Iowa State and Creighton...A great athlete...Quickest player on the team and should help out right away...All-State two years and Honorable Mention All-American...Conference and District champion in 200 dash three years and two years in long jump...State second place in 200 and long jump as a senior...Averaged 18.9 points and 7.5 rebounds at Fort Dodge High School...Played in Iowa AAU All-Star game and Iowa Central All-Star game...Scored 26 in one game...Gives UNI a true point guard with speed and quickness...Will contend for starting berth with Molly Kelly...Attended same high school as junior Kris Huffman...Is very strong and aggressive...Should give the Panthers another dimension both on offense and defense.



## 30 Kathy Kolstedt

**6-0 Freshman, Horlick High School, Racine, WI**

Born May 8, 1969...Advertising/Design major...Graduated with 3.77 GPA from Horlick High School...Holds HHS record for rebounds in a game with 20...Two-year varsity starter...Led team in rebounds and blocked shots...All-Conference and All-County...Wisconsin Basketball Coaches Association All-Star...Gateway Summer League All-Star and MVP...High school team competed in Wisconsin state tourney and was conference champ three times...A promising young player for Mayden...Will play forward or possibly off guard...Sets very high personal and team goals for the upcoming season...Played in state finals in 1987...Played with First Team All-American guard Sonja Henning at Horlick High School...May not contribute a great deal this season as she learns the program...Will be a factor in her career at UNI before she graduates...Good, solid athlete.

---

# **The 1987-88 UNI Panthers**

---

## **Alphabetical Roster**

Sandy Grabowski	F	6-0	JR	Crown Point, IN/Crown Point HS
Cindy Harms	C	6-0	JR	Allison, IA/Allison-Bristow HS
Kris Huffman	G	5-9	JR	Fort Dodge, IA/Fort Dodge HS
Molly Kelly	G	5-6	SO	Oshkosh, WI/Lourdes Academy
Kathy Kolstedt	F	6-0	FR	Racine, WI/Horlick HS
Loretha Mosley	G	5-9	FR	Fort Dodge, IA/Fort Dodge HS
Dianne Peelen	C	6-4	SO	Hume, MO/Nevada HS
Diane Roberts	F	5-11	SR	Eldora, IA/Eldora-New Providence HS
Nicki Rohde	G	5-9	SO	Des Moines, IA/Hoover HS
Chris Shafer	C	6-4	JR	Eddyville, IA/Eddyville HS
Kim Smythe	F	6-0	SR	Cedar Rapids, IA/LaSalle HS
Rhonda Wiebold	F	5-10	SO	Amara, IA/Amara HS

---

## **Personnel Breakdown**

### **By State**

Iowa (8)  
Wisconsin (2)  
Indiana (1)  
Missouri (1)

### **By Class**

Freshmen (2)  
Sophomores (4)  
Juniors (4)  
Seniors (2)

### **By Position**

Guards (4)  
Forwards (5)  
Centers (3)

---

## **Numerical Roster**

14	Molly Kelly	G	5-6	SO
20	Loretha Mosley	G	5-9	FR
22	Kris Huffman	G	5-9	JR
24	Cindy Harms	C	6-0	JR
30	Kathy Kolstedt	F	6-0	FR
32	Kim Smythe	F	6-0	SR
34	Nicki Rohde	G	5-9	SO
40	Diane Roberts	F	5-11	SR
42	Rhonda Wiebold	F	5-10	SO
44	Dianne Peelen	C	6-4	SO
50	Sandy Grabowski	F	6-0	JR
54	Chris Shafer	C	6-4	JR





# 1986-87: A Look Back

Despite high expectations, UNI slipped to a 6-20 record, down from 9-18 the year before. The reasons for the poor season record were easy to spot — rebounding and defense. UNI was at or near the bottom of the league in rebounding, defense, rebounding margin and scoring margin. Those numbers caused problems all season.

For example, UNI gave up over 90 points six times and under 75 only twice, when UNI won. (Western Illinois scored 52 in a 53-52 UNI win and Drake scored 61 in a 64-61 UNI win). In the six games where the Panthers allowed over 90 points, UNI never came closer than eight points.

While those figures may have indicated nothing but a poor year, just the opposite was true from many standpoints. At the top of that list was the emergence of two guards who should provide great dividends to the Panthers this year and in the future, Nicki Rohde and Molly Kelly.

Rohde, a freshman, scored 29 to lead UNI to a win over Indiana State at home in the middle of the season. She also was a force on the boards and the hardest worker on the floor. She plays an aggressive style on the floor but she never cracks an expression on her face. She was only a freshman, but gave Mayden room for optimism.

Kelly was penciled in to start at point guard in her freshman year, but an injury in a pre-season game kept her out until the end of the year. When she came back, she showed a great deal of promise and will be a factor in the future.

Diane Roberts had another outstanding season. She led the team in rebounding (7.0), scoring (16.9) and virtually every other stat. She was team high scorer in 14 of the 26 games and led the team in rebounding 14 times, as well. She has had three outstanding offensive years in a row.

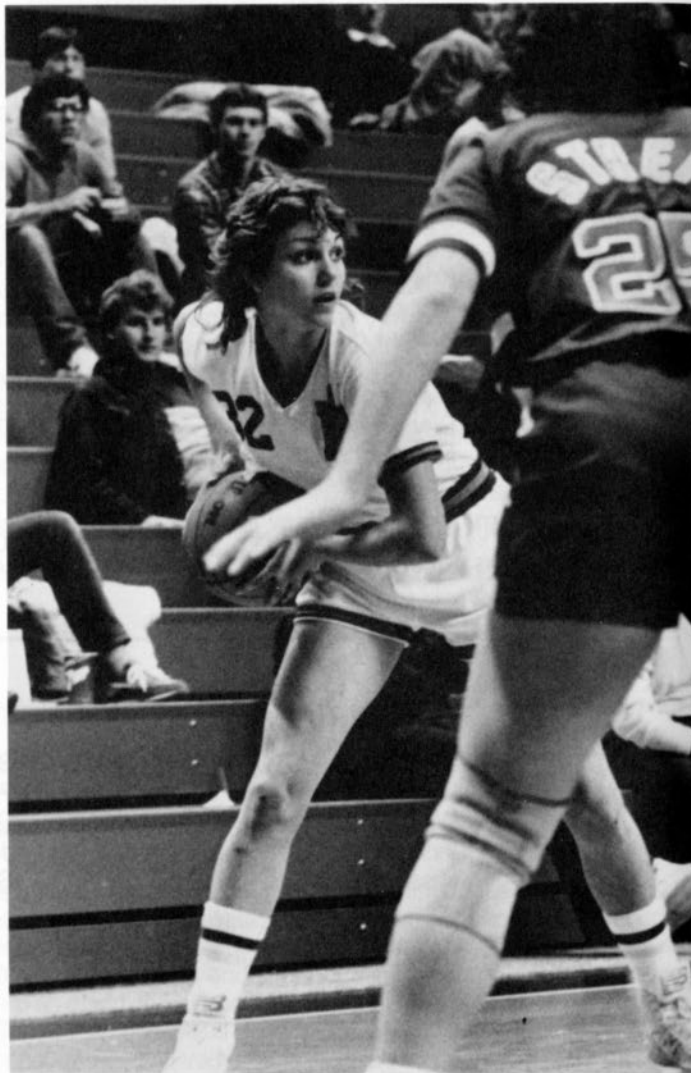
Kris Huffman came into the year with much of the offensive load on her shoulders. She was mired in a shooting slump throughout most of the year, but near the end of the season she came back with a vengeance and was the Huffman of old. She added a team high 85 assists.

Rebounding was a key problem area for UNI all season. The Panthers finished the season with a deficit of nearly five rebounds per game to their opponents. Part of the problem was that the forward-center combination averaged a combined seven boards per game. Much of the slack was picked up by Rohde and Knapp from the guard spots.

As far as the team went, things looked fairly well early on. UNI won its opener for the first time since the 1982-83 season and despite two resounding losses to Iowa State and Missouri of the Big Eight early in the season, managed to begin the conference season with a 2-4 mark. That record could easily have been better, but for a loss to Chicago State.

Drake opened the conference season and UNI was ready for the Bulldogs. A big rival, UNI handed Drake a 64-61 loss. That win looked like it would boost the spirits of the squad as it began the conference season, but a three-game losing skid followed.

UNI came home, handing Indiana State a loss like none other before, primarily because no UNI team had ever defeated the Sycamores before. After that, and a win over



Western Illinois, UNI had a 3-3 conference record and it seemed that the preseason expectations were going to be lived up to.

From that point on, however, UNI's defense gave up an average of over 83 points per outing. It was going to be hard to win many games with that kind of defense. True, it was hard for the rest of the year as UNI ended the season with a nine-game and a four-game losing streak sandwiched around a win over Western Illinois.

Things weren't all bad, however, for the young Panther team. Mayden points out there were no seniors on the team and only two juniors. A very young contingent, sometimes starting a freshman, three sophomores and a junior, took the floor every night.

The young talent will mature. There was a lack of experience and leadership on the young team, and a tough schedule. However, Mayden didn't write the season off, noting that the squad gained some experience, developed that leadership as the year went on and made a great deal of progress.



# 1986-87: Game-By-Game Synopsis

## **Nov. 29 UNI 84, Maryland-Baltimore County 68**

CEDAR FALLS-Northern Iowa opened its year with a win for the first time since the 1982-83 season by defeating the Retrievers in their first meeting in history. Cindy Harms had a 26-point outing to lead UNI. Sandy Grabowski added 10 rebounds.

## **Dec. 2 Iowa State 76, UNI 41**

AMES-UNI shot miserably from the field (26 percent) and suffered its worst loss of the season. Diane Roberts had 14 points and 11 rebounds to be the only bright spot in the game.

## **Dec. 5 Northern Illinois 86, UNI 72**

DEKALB-In the first round of play at the NIU FastBreak Fest, the host school handed UNI a defeat that Panther coaches felt could have easily gone the other way. Roberts' 20 points led the team while three players had seven rebounds.

## **Dec. 6 Missouri 85, UNI 54**

DEKALB-After losing to Old Dominion in the first round of the NIU Tourney, Missouri took out its frustrations on UNI, scoring a 31-point win. Harms had 13 rebounds and Grabowski added nine. UNI finished fourth in the field.

## **Dec. 11 UNI 95, Illinois-Chicago 84**

CEDAR FALLS-UNI won its second game of the season in this offensive battle with the Flames of UIC. Roberts had 20 points and nine rebounds to pace the team in both categories again.

## **Dec. 20 Chicago State 82, UNI 76**

CEDAR FALLS-A nine-day layoff showed as UNI fell to a Chicago State team not expected to win. Harms had her third big offensive game of the year with 25 points and Roberts chipped in seven rebounds, but it wasn't enough.

## **Dec. 30 UNI 64, Drake 61**

CEDAR FALLS-Although Drake came into this game at 0-9, most still assumed that the 'Dogs would continue their domination over UNI. However, Roberts' 25 points and 13 rebounds led UNI to a conference-opening win for the first time in history.

## **Jan. 3 Eastern Illinois 87, UNI 78**

CHARLESTON-The Panthers' series of high-scoring games continued in the loss to Gateway foe Eastern Illinois. Roberts had 21 points and nine rebounds to lead the team again in both categories.

## **Jan. 5 Southern Illinois 98, UNI 68**

CARBONDALE-Southern Illinois became the third team of the season to hand UNI a loss of 30 points or more despite another good offensive showing by Roberts. She tallied 22 points and tied for rebounding honors with Knapp with six.

## **Jan. 8 Illinois State 81, UNI 65**

CEDAR FALLS-The West Gym was the site that saw UNI lose its third straight Gateway game to ISU. Roberts scored over 20 points for the fourth consecutive time with 23 and added a team high eight rebounds. UNI is now 1-3 in the league and 3-7 overall.

## **Jan. 11 UNI 84, Indiana State 78**

CEDAR FALLS-Amy Hile, Indiana State's super-scorer, was completely shut down and freshman Rohde had a career high 29 points in the win. UNI had never defeated ISU.

## **Jan. 15 UNI 81, Western Illinois 75**

MACOMB-The Panthers won back-to-back games in the conference for only the second time behind 30 points from Knapp and eight rebounds by Grabowski.

## **Jan. 17 Bradley 86, UNI 68**

PEORIA-Bradley ended a modest two-game winning streak by the Panthers with an easy home win. Roberts' 17 points led the team and Knapp had nine rebounds from her point guard spot.

## **Jan. 24 Wichita State 95, UNI 72**

CEDAR FALLS-In the first game of a five-game homestand, UNI fell to its conference foe by 23 points. Harms had 18 points and Knapp added eight rebounds.

## **Jan. 26 Southwest Missouri State 93, UNI 82**

CEDAR FALLS-Roberts' 24 points and 10 rebounds just weren't enough as the Panthers fell at home again. The loss left UNI with a 5-10 overall mark, 3-6 in the league.

## **Jan. 29 Southern Illinois 87, UNI 64**

CEDAR FALLS-Conference leader Southern Illinois handed UNI its third straight loss at home, 87-64. UNI's team leader on the boards had only five, while Roberts had 19 points.

## **Jan. 31 Eastern Illinois 81, UNI 70**

CEDAR FALLS-A guard named Melanie Hatfield gave UNI all sorts of trouble as EIU won this game. Harms had a career-high 28 points and Roberts added 12 rebounds in the loss.

## **Feb. 3 Creighton 82, UNI 75**

CEDAR FALLS-In the first meeting between these two schools, Creighton pulled out a close win in the UNI-Dome. Roberts had 24 points and Grabowski had 12 rebounds.

## **Feb. 5 Indiana State 81, UNI 70**

TERRE HAUTE-Game seven of a nine-game losing streak came here as ISU avenged an earlier loss. Roberts had a season-high 27 points and Knapp had 10 rebounds.

## **Feb. 7 Illinois State 79, UNI 59**

NORMAL-UNI still has never defeated Illinois State after a loss here. Harms had 18 points and Roberts had eight rebounds. UNI fell to 5-15 overall.

## **Feb. 12 Bradley 90, UNI 82**

CEDAR FALLS-Plenty of offense but no defense was the key here in the loss. Roberts had 25 points and Rohde had 10 rebounds.

## **Feb. 14 UNI 53, Western Illinois 52**

CEDAR FALLS-The losing streak ended at nine with a very close win over Western Illinois. However, it was the only UNI win in its final 15 games. Rohde had 19 points and Roberts added 12 rebounds.

## **Feb. 19 Southwest Missouri State 95, UNI 63**

SPRINGFIELD-The winning streak didn't last long as the Bears hammered the Panthers. Knapp had 23 and Kim Smythe led the team with six rebounds.

## **Feb. 21 Wichita State 75, UNI 55**

WICHITA-The Panthers wrapped up an unsuccessful two-game road swing in Wichita. Roberts had 19 points and six rebounds to lead the team in both categories.

## **Feb. 21 Marquette 78, UNI 64**

MILWAUKEE-The Warriors upset the Panthers on their home court by 14 points. Grabowski scored 20 and Knapp had 10 rebounds in the next-to-last game of the year.

## **Feb. 28 Drake 90, UNI 61**

DES MOINES-After defeating Drake earlier in the year, the Bulldogs hammered back on UNI by 29 points. Kris Huffman led the team in scoring for the first time all year with 21 and Knapp and Roberts each had seven rebounds.

## '86-87 Game-by-Game Scoring/Rebounding

Opponent	Beavers	Kelly	Knapp	Grabowski	Harms	Huffman	Peelen	Roberts	Rohde	Rolinger	Shafer	Smythe	Wiebold	UNI	OPP
MD-Balt. CO	DNP	DNP	4/3	20/10	4/1	DNP	18/5	3/4	3/1	0/1	6/1	DNP	84/29	68/43	
Iowa State	2/0	DNP	0/2	6/3	7/3	2/2	0/2	14/11	6/3	0/3	0/3	4/0	0/0	41/42	76/60
Missouri	2/0	DNP	10/7	6/3	7/7	4/5	DNP	20/7	15/4	2/1	0/1	6/2	DNP	71/41	86/50
N. Illinois	0/0	DNP	DNP	11/9	13/5	6/2	DNP	11/7	2/5	4/0	2/3	5/2	DNP	54/38	85/41
Illinois-Chicago	0/0	DNP	6/5	16/8	8/2	17/4	2/2	20/9	13/6	4/1	4/1	5/6	DNP	95/49	84/45
Chicago State	DNP	DNP	11/4	10/1	25/5	6/4	DNP	15/7	2/5	DNP	DNP	4/4	DNP	76/33	82/50
Drake	DNP	DNP	11/7	4/6	8/3	8/5	0/1	25/13	4/1	DNP	0/0	4/5	DNP	64/43	61/37
Eastern Illinois	2/1	DNP	15/6	14/7	10/1	4/2	DNP	21/9	5/1	DNP	0/1	7/7	DNP	78/41	87/38
Southern Illinois	0/1	DNP	7/6	1/2	8/0	12/5	0/0	22/6	5/2	DNP	2/2	9/4	2/0	68/33	98/29
Illinois State	DNP	DNP	8/0	5/3	10/7	4/5	DNP	23/8	11/3	DNP	DNP	4/3	DNP	65/33	81/39
Indiana State	4/1	DNP	16/10	3/2	10/3	7/1	DNP	5/4	29/7	DNP	4/4	6/5	DNP	84/45	78/42
Western Illinois	DNP	DNP	30/6	8/8	15/6	8/1	DNP	6/4	14/7	DNP	0/1	0/1	DNP	81/39	75/35
Bradley	0/1	DNP	13/9	7/3	11/4	4/3	DNP	17/5	14/4	DNP	0/1	2/9	DNP	68/43	86/45
Wichita State	0/0	DNP	13/8	1/2	18/5	10/6	0/0	13/3	17/7	DNP	0/0	0/3	0/0	72/39	95/61
SW Missouri St.	0/0	DNP	10/6	2/1	13/5	10/4	DNP	24/10	17/8	DNP	0/1	6/2	DNP	82/38	93/44
Southern Illinois	2/0	DNP	8/4	6/3	6/2	6/5	2/2	19/2	7/3	DNP	2/2	6/2	0/0	64/28	87/27
Eastern Illinois	0/0	DNP	4/3	0/3	28/4	9/0	DNP	13/12	16/4	DNP	DNP	0/1	DNP	70/29	81/40
Creighton	DNP	DNP	12/7	12/12	17/1	6/5	DNP	24/4	4/2	DNP	DNP	0/0	DNP	75/33	82/38
Indiana State	DNP	2/4	4/10	6/7	7/3	12/0	DNP	27/8	10/3	DNP	DNP	2/2	DNP	70/40	81/47
Illinois State	DNP	0/1	2/2	4/3	18/3	10/2	DNP	13/8	8/4	DNP	DNP	4/4	DNP	59/33	79/30
Bradley	0/0	0/0	10/6	9/4	9/5	21/5	DNP	25/3	8/10	DNP	0/0	0/1	DNP	82/39	90/39
Western Illinois	DNP	2/1	2/2	2/2	4/5	12/2	DNP	11/12	19/4	DNP	DNP	4/5	DNP	56/35	52/46
SW Missouri St.	0/1	5/0	23/4	2/5	6/4	10/3	0/2	6/4	7/3	DNP	2/2	2/6	0/1	63/39	97/45
Wichita State	2/1	5/5	7/4	4/3	2/0	4/2	0/1	19/6	12/4	DNP	0/2	0/1	0/0	55/31	75/39
Marquette	DNP	0/0	14/10	20/7	4/2	6/1	DNP	14/4	4/4	DNP	2/4	0/0	DNP	64/33	78/36
Drake	2/1	0/0	9/7	0/3	2/1	21/4	3/3	14/7	8/3	DNP	0/1	0/1	2/1	61/36	90/38
SEASON HIGHS	4/1	5/5	30/10	20/12	28/7	21/6	3/3	27/13	29/10	4/3	4/4	9/9	2/1	95/49	98/61

Returnees in **Bold**

## '86-87 Results

UNI	OPP	S	W/L	ATTEN.	HIGH SCORER	HIGH REBOUNDER
84	MD-Baltimore County	68	H	W	300	Harms-26
41	Iowa State	76	A	L	506	Roberts-14
72	Northern Illinois*	86	A	L	268	Roberts-20
54	Missouri*	85	N	L	113	Harms-13
95	Illinois-Chicago	84	H	W	90	Roberts-20
76	Chicago State	82	H	L	110	Harms-25
64	Drake**	61	H	W	175	Roberts-25
78	Eastern Illinois**	87	A	L	145	Roberts-21
68	Southern Illinois**	98	A	L	396	Roberts-22
65	Illinois State*	81	H	L	149	Roberts-23
84	Indiana State**	78	H	W	173	Rohde-29
81	Western Illinois**	75	A	W	150	Knapp-30
68	Bradley**	86	A	L	125	Roberts-17
72	Wichita State**	95	H	L	220	Harms-18
82	SW Missouri State**	93	H	L	310	Roberts-24
64	Southern Illinois**	87	H	L	80	Roberts-19
70	Eastern Illinois**	81	H	L	106	Harms-28
75	Creighton	82	H	L	144	Roberts-24
70	Indiana State**	81	A	L	200	Roberts-27
59	Illinois State**	79	A	L	812	Harms-18
82	Bradley**	90	H	L	217	Roberts-25
56	Western Illinois**	52	H	W	325	Rohde-19
63	SW Missouri State**	95	A	L	718	Knapp-23
55	Wichita State**	75	A	L	105	Roberts-19
64	Marquette	78	A	L	561	Grabowski-20
61	Drake**	90	A	L	825	Huffman-21

\*At Northern Illinois Fastbreak Fest

\*\*Gateway Conference contest



# '86-87 Statistics

PLAYER	G-S	FG-FGA	%	3-pt. FG-GFA	%	FT-FTA	%	O-D-T REB	AVG	PF-D	PTS-AVG	AS	TO	BLK	S
Beavers	14-0	6-13	46.2	0-0	0.0	4-7	57.1	3-4 = 7	0.5	6-0	16-1.1	2	5	0	1
GCAC	10-0	5-12	41.7	0-0	0.0	2-5	40.0	3-4 = 7	0.7	6-0	12-1.2	2	4	0	1
Kelly	8-0	6-23	26.1	2-4	50.0	0-1		5-6 = 11	1.4	10-0	14-1.8	11	12	0	4
GCAC	7-0	6-21	28.6	2-4	50.0	0-1		5-6 = 11	1.6	8-0	14-2.0	9	8	0	4
Knapp	25-21	108-237	45.6	2-7	28.6	33-53	62.3	50-88 = 138	5.5	55-2	251-10.0	59	93	5	37
GCAC	18-19	81-163	49.7	2-7	28.6	28-42	66.7	39-61 = 100	5.6	37-2	192-10.7	42	66	4	27
Gibowski	26-16	63-128	49.2	0-0	0.0	53-88	60.2	46-74 = 120	4.6	73-2	179-6.9	16	61	8	9
GCAC	18-9	27-67	40.3	0-0	0.0	24-40	60.0	25-42 = 67	3.7	49-2	78-4.3	6	34	8	5
Harms	26-20	115-235	48.9	0-0	0.0	62-87	71.3	33-55 = 88	3.4	99-9	292-11.2	16	57	17	25
GCAC	18-12	72-161	44.7	0-0	0.0	41-58	70.7	21-40 = 61	3.4	68-7	185-10.3	9	37	13	18
Huffman	26-20	97-233	41.6	2-5	40.0	30-40	75.0	30-49 = 79	3.0	82-4	226-8.7	85	118	13	38
GCAC	18-13	74-161	46.0	2-5	40.0	22-29	75.9	19-36 = 55	3.1	57-4	172-9.6	56	90	5	30
Peelen	9-0	3-10	30.0	0-0	0.0	1-2	50.0	8-5 = 13	1.4	3-0	7-0.8	0	6	4	1
GCAC	6-0	2-7	28.6	0-0	0.0	1-2	50.0	7-2 = 9	1.5	3-0	5-0.8	0	4	1	0
Roberts	16-16	163-410	39.8	30-81	37.0	83-100	83.0	53-130 = 183	7.0	60-1	439-16.9	47	71	9	48
GCAC	18-18	108-277	39.0	22-66	33.3	65-77	83.3	35-89 = 124	6.9	40-1	303-16.8	39	44	4	29
Rohde	26-21	97-235	41.3	3-8	37.5	61-87	70.1	43-68 = 111	4.2	43-0	258-9.9	57	90	2	35
GCAC	18-15	79-183	43.2	3-8	37.5	50-71	70.4	30-48 = 78	4.3	34-0	211-11.7	40	54	2	26
Rolinger	5-0	5-10	50.0	0-0	0.0	3-5	60.0	2-4 = 6	1.2	9-0	13-2.6	3	4	0	1
Shafer	20-0	7-26	26.9	0-0	0.0	4-8	50.0	8-22 = 30	1.5	25-0	18-0.9	2	6	11	2
GCAC	14-0	4-14	28.9	0-0	0.0	2-2	100	5-12 = 17	1.2	16-0	10-0.7	2	5	8	0
Smythe	26-6	34-93	36.6	0-0	0.0	18-31	58.1	31-46 = 77	3.0	26-0	86-3.3	11	33	1	9
GCAC	18-6	23-68	33.8	0-0	0.0	10-13	76.9	26-36 = 62	3.4	17-0	56-3.1	6	15	1	6
Wiebold	7-0	1-9	11.1	0-0	0.0	2-3	66.7	1-1 = 2	0.3	2-0	4-0.6	2	2	0	1
GCAC	6-0	1-7	14.3	0-0	0.0	2-3	66.7	1-1 = 2	0.3	2-0	4-0.7	1	1	0	1
TOTALS	26	705-1662	42.4	39-105	37.1	354-512	69.1	362-599 = 961	37.0	493-19	1803-69.3	311	549	70	212
GCAC	18	482-1151	41.9	31-89	34.8	247-345	71.6	247-411 = 658	36.6	337-17	1242-69.0	212	363	46	148
OPP	26	846-1728	49.0	19-52	36.5	416-583	71.4	379-703 = 1082	41.6	523-13	2125-81.7	454	509	88	268
GCAC	18	586-1161	50.5	16-46	34.8	298-414	72.0	225-491 = 716	39.8	333-7	1484-82.4	346	328	79	177

Team Rebounds: UNI 49-47 = 96

OPP 31-39 = 70

Dead Ball Rebounds: UNI 62

OPP 59

Team Turnover: 1

## 1986-87

## HIGHS

## LOWS

FIELD GOALS  
FG ATTEMPTS  
FG PERCENTAGE  
FREE THROWS  
FT ATTEMPTS  
FT PERCENTAGE  
3-PT GOALS  
3-PT ATTEMPTS  
3-PT PCT. (3 ATT)  
REBOUNDS  
FOULS  
ASSISTS  
TURNOVERS  
STEALS  
BLOCKS  
POINTS

40 vs. Illinois-Chicago  
82 vs. Wichita State  
60.0 vs. Maryland-Baltimore County  
26 vs. Southwest Missouri  
39 vs. Southwest Missouri  
92.3 (12-13) vs. Marquette  
7 vs. Bradley  
13 vs. Bradley  
100 (4-4) vs. Indiana State  
49 vs. Illinois-Chicago  
28 vs. Bradley  
20 vs. Indiana State  
36 vs. Illinois State  
13 several times  
8 vs. Western Illinois  
95 vs. Illinois-Chicago

15 vs. Iowa State  
48 vs. Southern Illinois  
24.6 vs. Iowa State  
5 vs. Western Illinois, Drake  
6 vs. Western Illinois  
45.5 vs. Missouri  
0 several times  
0 several times  
0 several times  
28 vs. Southern Illinois  
9 vs. Illinois State  
3 vs. Wichita State  
15 vs. Eastern Illinois, Western Illinois  
0 vs. Southwest Missouri State  
0 vs. Southern Illinois, Southwest Missouri  
41 vs. Iowa State



# Panther Record Section

## (Career Marks)

### Field Goals Made

1. Deb Drenth.....	559
2. Tami Schebler .....	558
3. Diane Roberts .....	519
4. Lisa Geske.....	438
5. Betty Davis.....	426
6. Lynn Cuvelier Hach.....	247
7. Carol Hogan.....	240
8. Kris Huffman .....	231
9. Lisa Laughlin .....	224
10. Sue Grove .....	218

### Field Goals Attempted

1. Diane Roberts .....	1212
2. Deb Drenth.....	1184
3. Tami Schebler .....	1144
4. Betty Davis.....	1102
5. Lisa Geske.....	1038
6. Lynn Cuvelier Hach.....	739
7. Lisa Laughlin .....	638
8. Kris Huffman .....	542
9. Kathy Konigsmark.....	506
10. Carol Hogan.....	497

### Rebounding

1. Tami Schebler .....	788
2. Deb Drenth.....	758
3. Diane Roberts .....	531
4. Lisa Geske.....	521
5. Pat Zalesky .....	426
6. Carol Hogan.....	417
7. Betty Davis.....	308
8. Sandy Grabowski .....	281
9. Sue Grove .....	280
10. Cindy Hanson .....	258

### Free Throws Made

1. Deb Drenth.....	331
2. Diane Roberts .....	258
3. Lisa Geske .....	160
4. Betty Davis.....	147
5. Tami Schebler .....	142
6. Sue Grove .....	138
7. Pat Zalesky .....	127
8. Anne Otten.....	124
9. Lynn Cuvelier Hach.....	111
10. Sandy Grabowski .....	85

### Free Throws Attempted

1. Deb Drenth.....	449
2. Diane Roberts .....	358
3. Betty Davis.....	253
4. Lisa Geske.....	249
5. Tami Schebler .....	243
6. Pat Zalesky .....	241
7. Sue Grove .....	182
8. Anne Otten.....	179
9. Lynn Cuvelier Hach.....	171
10. Sandy Grabowski .....	161

### Scoring

1. Deb Drenth.....	1449
2. Diane Roberts .....	1326
3. Tami Schebler .....	1268
4. Lisa Geske.....	1036
5. Betty Davis.....	999
6. Lynn Cuvelier Hach.....	615
7. Carol Hogan.....	574
7. Sue Grove .....	574
9. Lisa Laughlin .....	549
10. Kris Huffman .....	545

### FG Percentage (100 Made)

1. Sue Grove.....	218-407...53.6
2. Sandy Grabowski	142-290...49.0
3. Tami Schebler	558-1144...48.8
3. Pat Zalesky...	203-416...48.8
5. Carol Hogan...	240-497...48.3
6. Cindy Harms...	143-402...48.0
7. Deb Drenth...	559-1184...47.2
8. Karen Gorman .....	NA...46.2
9. Diane Roberts	519-1212...42.8
10. Kris Huffman...	231-542...40.3

### Assists

1. Deb Drenth.....	292
2. Betty Davis.....	261
3. Kris Huffman .....	192
4. Lisa Laughlin .....	188
5. Anne Otten.....	169
6. Kathy Konigsmark.....	151

### FT Percentage (100 Att)

1. Kris Huffman ....	81-108...75.0
2. Deb Drenth ....	331-449...73.7
3. Kathy Konigsmark...	NA...73.5
4. Sue Grove.....	138-182...72.5
5. Diane Roberts	258-358...72.1
6. Karen Gorman ..	75-106...70.7
7. Anne Otten ....	121-179...69.3
8. Robyn Knapp ...	80-120...66.7
9. Lisa Laughlin....	81-123...65.8
10. Lynn Cuvelier Hach...	111-171...64.9

## Individual Season Records (Since 1978)

Field Goals Made: 216 by Diane Roberts, '84-85  
Field Goals Attempted: 448 by Diane Roberts, '84-85  
Field Goal Percentage (200 ATT): 54.1 (118-218) by Sue Grove, '80-81  
Free Throws Made: 109 by Diane Roberts, '84-85  
Free Throws Attempted: 161 by Diane Roberts, '85-86  
Free Throw Percentage (100 ATT): 83.0 (83-100) by Diane Roberts, '86-87  
Three Point Goals Made: 30 by Diane Roberts, '86-87  
Three Point Goals Attempted: 81 by Diane Roberts, '86-87  
Three Point Goal Percentage (30 ATT): 37.0 (30-61) by Diane Roberts, '86-87  
Points Scored: 541 by Diane Roberts, '84-85  
Scoring Average: 19.3 by Diane Roberts, '84-85  
Assists: 107 by Kris Huffman, '85-86  
Assist Average: 4.5 by Anne Otten, '85-86  
Rebounds: 224 by Deb Drenth, '80-81  
Rebound Average: 10.1 by Pat Zalesky, '78-79  
Turnovers: 153 by Karen Gorman, '84-85  
Fouls: 106 by Sandy Grabowski, '85-86  
Disqualifications: 14 by Sandy Grabowski, '85-86  
Steals: 84 by Deb Drenth, '82-83  
Games Played: 31 by many, '81-82  
Blocked Shots: 66 by Carol Hogan, '82-83

## Individual Single Game Records: (Since 1978)

Field Goals Made: 17 by Diane Roberts, '84-85  
Field Goals Attempted: 31 by Diane Roberts, '84-85  
Field Goal Percentage (10 ATT): 90.9 (10-11) by Cindy Harms, '86-87  
Free Throws Made: 16 by Deb Drenth, '81-82  
Free Throws Attempted: 19 by Deb Drenth, '81-82  
Free Throw Percentage (10 ATT): 84.2 (16-19) by Deb Drenth, '81-82  
Three Point Goals Made: 5 by Diane Roberts, '86-87  
Three Point Goals Attempted: 8 by Diane Roberts, '86-87  
Three Point Goal Percentage (5 ATT): 62.5 (5-8) by Diane Roberts, '86-87  
Assists: 12 by Anne Otten, '85-86  
Rebounds: 19 by Lisa Geske, '82-83  
Blocked Shots: 7 by Carol Hogan, Lisa Geske, Deb Drenth and Kathy Konigsmark  
Consecutive Field Goals Made: 14 by Diane Roberts, '85-86

## Team Single Game Records (Since 1978)

Field Goals Made: 41 vs. Illinois-Chicago, '82-83  
Field Goals Attempted: 90 vs. Concordia, '80-81  
Field Goal Percentage: 60.0 (30-50) vs. Maryland-Baltimore County, '86-87  
Free Throws Made: 32 vs. Iowa State, '78-79  
Free Throws Attempted: 46 vs. Iowa State, '78-79  
Free Throw Percentage: 93.3 (14-15) vs. St. Francis, '82-83  
Three Point Goals Made: 7 vs. Bradley, '86-87  
Three Point Goals Attempted: 13 vs. Bradley, '86-87  
Three Point Goal Percentage: 100.0 (4-4) vs. Indiana State, '86-87  
Points Scored: 101 vs. Northwestern, '75-76  
Assists: 26 vs. Loras, '80-81  
Rebounds: 65 vs. Concordia, '80-81  
Steals: 26 vs. Marycrest, '79-80  
Turnovers: 46 vs. Iowa State, '78-79



## Team Season Records: (Since 1978)

Field Goals Made: 933, '81-82  
Field Goals Attempted: 2016, '81-82  
Field Goal Percentage: 46.3 (933-2016), '81-82  
Free Throws Made: 393, '84-85  
Free Throws Attempted: 626, '78-79  
Free Throw Percentage: 69.1, (354-512), '86-87  
Three Point Goals Made: 39, '86-87  
Three Point Goals Attempted: 105, '86-87  
Three Point Goal Percentage: 37.1 (39-105), '86-87  
Points Scored: 2205, '81-82  
Scoring Average: 73.3, '80-81  
Rebounds: 1241, '80-81  
Rebound Average: 44.3, '80-81  
Assists: 388, '80-81  
Turnovers: 868, '78-79  
Steals: 364, '81-82  
Blocked Shots: 149, '81-82  
Fouls: 564, '80-81  
Team Wins: 22, '81-82  
Team Losses: 25, '83-84  
Team Winning Percentage: 84.2 (16-3), '75-76  
Defensive Average: 61.2, '82-83  
Defensive Average (High): 82.4, '83-84

**(Since 1974)**

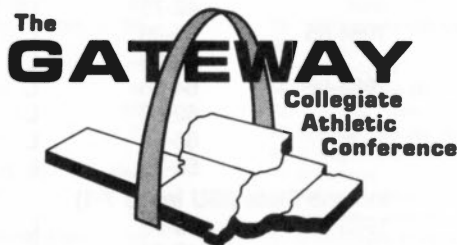
22



## UNI vs. '87-88 Opponents

23

# Gateway Collegiate Athletic Conference



In the late 1970's and early 1980's, a need arose for conferences to represent collegiate women's athletics. The cause of the need was the decline of the Association of Intercollegiate Athletics for Women (AIAW) and the increased role of the National Collegiate Athletic Association (NCAA) in women's sports.

During this period of transition, some mid-western universities with similar academic and athletic interests bound together in 1982 to form the Gateway Conference.

In August, 1982, the NCAA officially recognized the conference and in September, Patty Viverito was named the first commissioner. Before moving to its permanent headquarters in St. Louis, the Gateway spent three organizational months on the campus of Eastern Illinois University.

The conference is comprised of schools which are members of two different conferences for men's athletics. Six Gateway members are in the Missouri Valley Conference: Bradley, Drake, Illinois State, Indiana State, Southern Illinois and Wichita State. Four others are in the Association of Mid-Continent Universities: Eastern Illinois, Northern Iowa, Southwest Missouri State and Western Illinois.



**Gateway Commissioner  
Patty Viverito**

On August 21, 1985, the Gateway Conference Presidents Council voted to add a Division I-AA football division for six of its members, to their previously all-women's athletics organization. This move marked the first time in college annals that men's football was added to a women's conference. The Gateway, thus, is the newest football conference in the country.

"The conference has made great strides since its inception and I feel we will grow even



**Gateway Info. Dir.  
Jim Sheehan**

stronger," Commissioner Viverito has commented. "The 10 members are so committed to women's athletics that their well-established programs will get even stronger. In addition, I look forward to the added excitement and challenge that football will bring to this fine conference. The national prominence of football will also help to increase the visibility and enhance the prestige of our women's programs."

---

# ***University of Northern Iowa***

---

Northern Iowa is an excellent choice for students who want the atmosphere of a smaller college but the faculty and resources of a larger university. Northern Iowa is student-oriented and makes you feel welcome and challenged while you earn your education with a minimum of hassle.

Located in Cedar Falls, UNI was founded in 1876 as the Iowa State Normal School. From a single building on a 40-acre campus, the University has grown to include more than 40 major buildings and 11,500 students.

UNI emphasizes outstanding undergraduate education with complementary graduate programs at the master's, specialist's and doctoral levels. Building on its historic strength in teacher education, Northern Iowa

has developed other fine programs in its School of Business, College of Humanities and Fine Arts, College of Natural Sciences and College of Social and Behavioral Sciences.

Northern Iowa publishes the prestigious *North American Review*, a quarterly journal of literature that has received two National Magazine Awards. The University also operates KUNI-FM and KHKE-FM, serving eastern Iowa with quality music and public affairs programming. The Management Development Center and Small Business Development Center are two outreach programs of the School of Business, whose Department of Accounting is ranked among the best in the country.

Landmarks on the 723-acre campus include the Campanile, the Education Center, Strayer-Wood Theatre, Maucker University Union and the UNI-Dome. Special academic resources include the 600,000-volume University Library, the Industrial Technology Center and the Communication Arts Center.

The City of Cedar Falls is a pleasant and historic college town adjacent to Waterloo. Together, they are part of a major metropolitan area with a population of more than 100,000. It is a center for manufacturing, finance, commerce and cultural activities in northeast Iowa.

---

## ***Home in the Dome***

---

Northern Iowa's fans demand the best from the Panthers on the court and the school provides some of the best facilities in the Midwest, and in particular at the Division I level.

The UNI-Dome is one of the nation's finest basketball facilities, no matter at what level the game is played. The building actually combines the features of three different buildings — a football stadium, field house and large auditorium. It contains facilities to hold a variety of events, such as concerts, exhibitions, trade shows, pageants, rallies and convocations, as well as football, basketball and softball games and wrestling and track meets.

The UNI-Dome has hosted such events as the NCAA gymnastic and wrestling championships, the Iowa High School All-Star

Basketball games and Shrine Football games, the Iowa High School football playoffs, concerts by Dolly Parton, the Eagles, REO Speedwagon, Fleetwood Mac and the Rolling Stones, antique car shows, tractor pulls and many other non-athletic events.

The UNI-Dome's air-supported, Fiberglass fabric roof allows for ample natural light during daylight hours. Its artificial turf for football games can be rolled up in a minimum of 36 hours. Underneath, on a synthetic floor area, are basketball and tennis courts and an eight-lane, 220-yard oval running track. A portable wooden basketball floor is the newest addition to the UNI-Dome's basketball arrangement. As many as 12 tennis matches and two basketball games could be played simultaneously.

Approximately 16,400 spectators can be seated for football and 11,000 for court-side activities. For stage events, such as commencements, concerts and speakers' series, total capacity, using movable bleachers and chairs, can reach 25,000.

A spacious press box atop the east stands has facilities for 20 radio stations, television capabilities and seating for up to 125 people. A photography darkroom, photo bay, concession area and scouting booths are other features. Two huge scoreboards flash messages and information to spectators throughout events.

The west press box has been completed to provide a meeting room for the UNI Athletic Club.





Jan. 14 at Cedar Falls, IA  
Feb. 12 at Peoria, IL

## Bradley Braves

**HEAD COACH:** Lisa Boyer  
**ALMA MATER:** Ithaca, 1979  
**CAREER RECORD:** 15-13 (1 yr)  
**RECORD AT BRADLEY:** (15-13) (1 yr)  
**RETURNING STARTERS**

	POS	PPG
Shelly Braud	G	14.2
Karin Nicholls	F	12.0
Audrey DeClue	C	10.6

**LOCATION:** Peoria, IL  
**ARENA (Capacity):** Robertson Field House (7,300)  
**ATHLETIC DIRECTOR:** Ron Ferguson  
**ENROLLMENT:** 4,800  
**CONFERENCE (Finish):** Gateway (4th, 10-8)

**1986-87 RECORD:** 15-13  
**COLORS:** Red and White  
**ASSISTANT COACHES:** Susan Walvius and Nicki Hall  
**LETTERWINNERS RETURNING/LOST:** 5/7  
**SPORTS INFORMATION DIRECTOR:** Bo Ryan  
**SID PHONE: (Office/Home):** 309-677-2627/309-692-6575  
**SERIES RECORD (Last Meeting):** BU 8-0 (1987, BU 90, UNI 82)  
**POST-SEASON PLAY:** Lost to Southern Illinois in Gateway Tourney Semifinals.



Dec. 12 at Chicago, IL

## Chicago State Cougars

**HEAD COACH:** TBA  
**ALMA MATER:** TBA  
**CAREER RECORD:** TBA  
**RECORD AT CHICAGO STATE:** (1st yr)  
**RETURNING STARTERS**

	POS	PPG
Lisa Hughes	F	12.7
Loyola Moore	C	15.3
Debraca Richmond	F	1.5

**LOCATION:** Chicago, IL  
**ARENA (Capacity):** CSU Physical Education and Athletic Building (2,500)  
**ATHLETIC DIRECTOR:** TBA  
**ENROLLMENT:** 7,500  
**CONFERENCE (Finish):** Independent

**1986-87 RECORD:** 12-15  
**COLORS:** Green and White  
**ASSISTANT COACH:** John Boosalis  
**LETTERWINNERS RETURNING/LOST:** 7/4  
**SPORTS INFORMATION DIRECTOR:** Shawn Ahearn  
**SID PHONE: (Office/Home):** 312-995-2387/312-425-1625  
**SERIES RECORD (Last Meeting):** CSU 1-0 (1987, CSU 82, UNI 76)



Dec. 5 at Omaha, NE

## Creighton Lady Jays

**HEAD COACH:** Bruce Rasmussen  
**ALMA MATER:** Northern Iowa, 1971  
**CAREER RECORD:** 115-85 (7 yrs)  
**RECORD AT CREIGHTON:** (115-85) (7 yrs)  
**RETURNING STARTERS**

	POS	PPG
Pam Gradoville	F	22.0
Tanya Warren	G	18.7
Gayle Hiemstra	F	9.6
Jeannine Kardell	C	6.5

**LOCATION:** Omaha, NE  
**ARENA (Capacity):** Omaha Civic Auditorium (9,373)  
**ATHLETIC DIRECTOR:** Don Leahy  
**ENROLLMENT:** 5,907  
**CONFERENCE (Finish):** Independent

**1986-87 RECORD:** 23-7  
**COLORS:** Blue and White  
**ASSISTANT COACH:** Connie Yori  
**LETTERWINNERS RETURNING/LOST:** 6/2  
**SPORTS INFORMATION DIRECTOR:** Mike Reasoner  
**SID PHONE: (Office/Home):** 402-280-2720/402-571-6816  
**SERIES RECORD (Last Meeting):** CU 1-0 (1987, CU 82, UNI 75)  
**POST-SEASON PLAY:** Third Place, National Invitational Tournament



Jan. 23 in Des Moines, IA  
Feb. 20 in Cedar Falls, IA

## Drake Bulldogs

**HEAD COACH:** Susan Yow  
**ALMA MATER:** Elon, 1976  
**CAREER RECORD:** 127-119 (10 yrs)  
**RECORD AT DRAKE:** 9-18 (1 yr)  
**RETURNING STARTERS**

	POS	PPG
Jenni Fitzgerald	F	8.2
Julie McGhee	G	7.4
Caroline Orr	C	12.0
Missy Slockett	G	13.4

**LOCATION:** Des Moines, IA  
**ARENA (Capacity):** Drake Fieldhouse (2,000)  
**ATHLETIC DIRECTOR:** Curtis Blake  
**ENROLLMENT:** 5,200  
**CONFERENCE (Finish):** Gateway (6th, 9-9)

**1986-87 RECORD:** 9-18  
**COLORS:** Blue and White  
**ASSISTANT COACHES:** Sue Doran and Sharon Allen  
**LETTERWINNERS RETURNING/LOST:** 8/2  
**SPORTS INFORMATION DIRECTOR:** Caryn Hall  
**SID PHONE: (Office/Home):** 515-271-3740/515-255-7867  
**PRESS BOX PHONE:** 515-271-3740  
**SERIES RECORD (Last Meeting):** DU 14-3 (1987, DU 90, UNI 61)



Jan. 7 at Charleston, IL  
Feb. 6 at Cedar Falls, IA

## Eastern Illinois Panthers

**HEAD COACH:** Barbara Hilke  
**ALMA MATER:** Western Oregon State, 1974  
**CAREER RECORD:** 156-83 (8 yrs)  
**RECORD AT EASTERN ILLINOIS:** 156-83 (8 yrs)  
**RETURNING STARTERS**

	POS	PPG
Lisa Tyler	F	12.9
Barb Perkes	G	11.8
Laura Mull	C	7.5
Ann Brown	F	4.5

**LOCATION:** Charleston, IL  
**ARENA (Capacity):** Lantz Gym (6,500)  
**ATHLETIC DIRECTOR:** R.C. Johnson  
**ENROLLMENT:** 9,982  
**CONFERENCE (Finish):** Gateway (3rd, 11-7)

**1986-87 RECORD:** 17-13  
**COLORS:** Blue and Gray  
**ASSISTANT COACH:** Deanna D'Abbraccio  
**LETTERWINNERS RETURNING/LOST:** 9/1  
**SPORTS INFORMATION DIRECTOR:** Ron Yoakum  
**SID PHONE: (Office/Home):** 217-581-5981/217-348-0035  
**SERIES RECORD (Last Meeting):** EIU 9-2 (1987, EIU 81, UNI 70)  
**POST-SEASON PLAY:** Lost to Southern Illinois in Gateway Tourney Finals



Nov. 28 at Lakeland, FL

## Florida Southern Moccasins

**HEAD COACH:** Norm Benn  
**ALMA MATER:** Drexel, 1957  
**CAREER RECORD:** 46-10 (2 yrs)  
**RECORD AT FLORIDA SOUTHERN:** (46-10) (2 yrs)  
**RETURNING STARTERS**

	POS	PPG
Nanci Parks	F	10.4
Angie Norman	C	9.9

**LOCATION:** Lakeland, FL  
**ARENA (Capacity):** Jenkins Fieldhouse (3,000)  
**ATHLETIC DIRECTOR:** Hal Smeltzly  
**ENROLLMENT:** 1,800  
**CONFERENCE (Finish):** Sunshine State (1st, 12-0)

**1986-87 RECORD:** 23-6  
**COLORS:** Scarlet and White  
**ASSISTANT COACH:** Megan Henry  
**LETTERWINNERS RETURNING/LOST:** 5/7  
**SPORTS INFORMATION DIRECTOR:** Wayne Koehler  
**SID PHONE: (Office/Home):** 813-680-4256/813-686-0544  
**SERIES RECORD:** 1st Meeting



Dec. 10 at Chicago, IL

## Illinois-Chicago Flames

**HEAD COACH:** Francine St. Clair  
**ALMA MATER:** Chicago State, 1974  
**CAREER RECORD:** 63-45 (4 yrs)  
**RECORD AT ILLINOIS-CHICAGO:**  
 (1st yr)

RETURNING STARTERS	POS	PPG
Susan Cady	F	2.4
Lakita Coleman	F	7.4
Cindy Hines	G	5.7

**LOCATION:** Chicago, IL  
**ARENA (Capacity):** Physical Education Complex (4,000)  
**ATHLETIC DIRECTOR:** Tom Russo  
**ENROLLMENT:** 25,000  
**CONFERENCE (Finish):** Independent

**1986-87 RECORD:** 5-22  
**COLORS:** Indigo and Flame  
**ASSISTANT COACH:** Anita Gilkey  
**LETTERWINNERS RETURNING/LOST:**  
 5/6

**SPORTS INFORMATION DIRECTOR:**  
 Dave Mateer  
**SID PHONE: (Office):** 312-996-5880  
**SERIES RECORD (Last Meeting):** Tied  
 2-2 (1987, UNI 95, UIC 84)



Jan. 2 at Cedar Falls, IA  
 Jan. 30 at Normal, IL

## Illinois State Redbirds

**HEAD COACH:** Jill Hutchison  
**ALMA MATER:** New Mexico, 1967  
**CAREER RECORD:** 278-160 (16 yrs)  
**RECORD AT ILLINOIS STATE:** 278-160  
 (16 yrs)

RETURNING STARTERS	POS	PPG
Ellen McGrew	G	14.2
Susan Wellman	F	12.2
Pam Tanner	G	11.1
Amber Lindbeck	F	10.6
Char Govan	F	10.1

**LOCATION:** Normal, IL  
**ARENA (Capacity):** Horton Field House (8,000)  
**ATHLETIC DIRECTOR:** Ron Wellman  
**ENROLLMENT:** 21,000  
**CONFERENCE (Finish):** Gateway (5th, 10-8)

**1986-87 RECORD:** 12-15  
**COLORS:** Red and White  
**ASSISTANT COACHES:** Lisa Robinson and Chris McClure  
**LETTERWINNERS RETURNING/LOST:**  
 11/1

**SPORTS INFORMATION DIRECTOR:**  
 Christie Price  
**SID PHONE: (Office/Home):**  
 309-438-3825/309-452-2365  
**PRESS BOX PHONE:** 309-438-5950  
**SERIES RECORD (Last Meeting):** ISU  
 9-1 (1987, ISU 79, UNI 59)



Jan. 4 at Cedar Falls, IA  
 Jan. 28 at Terre Haute, IN

## Indiana State Sycamores

**HEAD COACH:** Andrea Myers  
**ALMA MATER:** Indiana State, 1974  
**CAREER RECORD:** 255-189 (16 yrs)  
**RECORD AT INDIANA STATE:** 46-95  
 (5 yrs)

RETURNING STARTERS	POS	PPG
Lori Castetter	F	9.2
Amy Vanderkolk	F	7.5
Toneko Kayzer	C	7.6
Terri Moore	G	5.2

**LOCATION:** Terre Haute, IN  
**ARENA (Capacity):** Indiana State Arena (5,000)  
**ATHLETIC DIRECTOR:** Bernard Cooper  
**ENROLLMENT:** 11,500  
**CONFERENCE (Finish):** Gateway (7th, 7-10)

**1986-87 RECORD:** 13-15  
**COLORS:** Blue and White  
**ASSISTANT COACHES:** Kay Riek and Tracy Johnson  
**LETTERWINNERS RETURNING/LOST:**  
 6/2

**SPORTS INFORMATION DIRECTOR:**  
 Mark Johnson  
**SID PHONE: (Office/Home):**  
 812-237-4159/812-232-3627  
**PRESS BOX PHONE:** 812-237-2376  
**SERIES RECORD:** ISU 7-1 (1987, ISU 81, UNI 70)





Dec. 19 at Cedar Falls, IA

## Iowa State Cyclones

**HEAD COACH:** Pam Wettig  
**ALMA MATER:** Bowling Green, 1973  
**CAREER RECORD:** 184-143 (12 yrs)  
**RECORD AT IOWA STATE:** 43-41 (3 yrs)  
**RETURNING STARTERS**      **POS**   **PPG**  
 Carmen Jaspers                      F    11.4  
 Etta Burns                              G    10.6  
 Vanessa Ward                         G    6.5  
**LOCATION:** Ames, IA  
**ARENA (Capacity):** Hilton Coliseum  
 (14,020)  
**ATHLETIC DIRECTOR:** Max Urick  
**ENROLLMENT:** 26,559  
**CONFERENCE (Finish):** Big Eight (8th,  
 2-12)

**1986-87 RECORD:** 12-16  
**COLORS:** Cardinal and Gold  
**ASSISTANT COACHES:** Kris Livingston  
 and Randy Mascarella  
**LETTERWINNERS RETURNING/LOST:**  
 7/5  
**SPORTS INFORMATION DIRECTOR:**  
 Donna Turner  
**SID PHONE: (Office/Home):**  
 515-294-3372/515-232-2042  
**PRESS BOX PHONE:** 515-294-8443  
**SERIES RECORD (Last Meeting):** ISU,  
 13-3 (1986, ISU 76, UNI 41)



Dec. 3 at Cedar Falls, IA

## Loras Duhawks

**HEAD COACH:** Rose Peeples  
**ALMA MATER:** Southern Illinois  
**CAREER RECORD:** (1st yr)  
**RECORD AT LORAS:** (1st yr)  
**RETURNING STARTERS**      **POS**   **PPG**  
 Rhonda Disney                         F    6.5  
**LOCATION:** Dubuque, IA  
**ARENA (Capacity):** Loras Fieldhouse  
 (2,000)  
**ATHLETIC DIRECTOR:** Bob Bieri  
**ENROLLMENT:** 2,000  
**CONFERENCE (Finish):** Iowa (3rd, 11-5)

**1986-87 RECORD:** 19-7  
**COLORS:** Purple and Gold  
**ASSISTANT COACH:** NA  
**LETTERWINNERS RETURNING/LOST:**  
 5/6  
**SPORTS INFORMATION DIRECTOR:**  
 Greg Yoko  
**SID PHONE: (Office/Home):**  
 319-588-7407/319-557-1539  
**SERIES RECORD (Last Meeting):** UNI  
 6-0 (1986, UNI 88, Loras 70)



Jan. 9 at Carbondale, IL  
 Feb. 4 at Cedar Falls, IA

## Southern Illinois Salukis

**HEAD COACH:** Cindy Scott  
**ALMA MATER:** Memphis State  
**CAREER RECORD:** 195-93 (10 yrs)  
**RECORD AT SOUTHERN ILLINOIS:**  
 195-93 (10 yrs)  
**RETURNING STARTERS**      **POS**   **PPG**  
 Bridgett Bonds                         F    14.2  
 Mary Berghuis                         C    11.7  
 Dana Fitzpatrick                       G    10.0  
**LOCATION:** Carbondale, IL  
**ARENA (Capacity):** SIU Arena (10,014)  
**ATHLETIC DIRECTOR:** Jim Livengood  
**ENROLLMENT:** 23,000  
**CONFERENCE (Finish):** Gateway (1st,  
 18-0)

**1986-87 RECORD:** 28-3  
**COLORS:** Maroon and White  
**ASSISTANT COACHES:** Julie Beck and  
 George Iubelt  
**LETTERWINNERS RETURNING/LOST:**  
 11/3  
**SPORTS INFORMATION DIRECTOR:**  
 Mitchell Parkinson  
**SID PHONE: (Office/Home):**  
 618-536-5566/618-457-7410  
**PRESS BOX PHONE:** 618-453-5272  
**SERIES RECORD (Last Meeting):** SIU  
 8-0 (1987, SIU 87, UNI 64)  
**POST SEASON PLAY:** Won Gateway  
 Tourney; Lost to Louisiana Tech in  
 NCAA 3rd Round



Dec. 31 at Springfield, MO  
Feb. 25 at Cedar Falls, IA

## Southwest Missouri State Bears

**HEAD COACH:** Cheryl Burnett  
**ALMA MATER:** Kansas, 1981  
**CAREER RECORD:** (1st yr)  
**RECORD AT SOUTHWEST MISSOURI STATE:** (1st yr)  
**RETURNING STARTERS**

	POS	PPG
Kelly Mago	F	16.9
Kimberly Scoggin	F	9.6

**LOCATION:** Springfield, MO  
**ARENA (Capacity):** Hammons Student Center (8,782)  
**ATHLETIC DIRECTOR:** Dr. Mary Jo Wynn  
**ENROLLMENT:** 16,184  
**CONFERENCE (Finish):** Gateway (3rd, 12-6)

**1986-87 RECORD:** 18-10  
**COLORS:** Maroon and White  
**ASSISTANT COACH:** Lynnette Robinson  
**LETTERWINNERS RETURNING/LOST:** 9/4  
**SPORTS INFORMATION DIRECTOR:** Jon Ripperger  
**SID PHONE: (Office/Home):** 417-836-5402/417-866-7060  
**PRESS BOX PHONE:** 417-826-4150  
**SERIES RECORD (Last Meeting):** SMS 6-4 (1987, SMS 95, UNI 63)  
**POST-SEASON PLAY:** Lost to Eastern Illinois in Gateway Tourney Semifinals



Nov. 27 at Deland, FL

## Stetson Lady Hatters

**HEAD COACH:** Nancy Nichols  
**ALMA MATER:** Toledo, 1982  
**CAREER RECORD:** 43-43 (3 yrs)  
**RECORD AT STETSON:** 43-43 (3 yrs)  
**RETURNING STARTERS**

	POS	PPG
Terri Cain	G	8.4
Rebel Wesley	G	5.3
Dee Hillery	C	16.5
Michelle Michael	F	13.7
Becca Daniels	F	8.9

**LOCATION:** Deland, FL  
**ARENA (Capacity):** Edmunds Center (5,000)  
**ATHLETIC DIRECTOR:** Dr. Glenn Wilkes  
**ENROLLMENT:** 2,800  
**CONFERENCE (Finish):** New South Women's (3rd, 7-3)

**1986-87 RECORD:** 21-8  
**COLORS:** Green and White  
**ASSISTANT COACH:** Kathy Barnard  
**LETTERWINNERS RETURNING/LOST:** 11/0  
**SPORTS INFORMATION DIRECTOR:** Ted Gumbart  
**SID PHONE: (Office):** 904-734-4121  
**SERIES RECORD (Last Meeting):** 1st Meeting



Jan. 16 at Cedar Falls, IA  
Feb. 11 at Macomb, IL

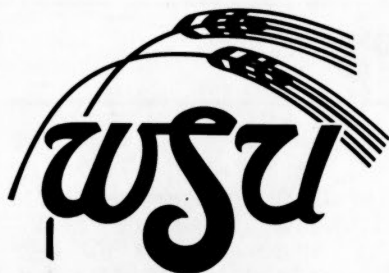
## Western Illinois Westerwinds

**HEAD COACH:** Kelly Hill  
**ALMA MATER:** Southern California, 1980  
**CAREER RECORD:** 42-68 (4 yrs)  
**RECORD AT WESTERN ILLINOIS:** 5-21 (1 yr)  
**RETURNING STARTERS**

	POS	PPG
Ruth Aicher	G	12.7
Beth Claeys	F	4.5
Laura Jensen	F	12.7
Debbie Kirsch	C	10.3

**LOCATION:** Macomb, IL  
**ARENA (Capacity):** Brophy Hall (1,500)  
**ATHLETIC DIRECTOR:** Dr. Helen Smiley  
**ENROLLMENT:** 11,000  
**CONFERENCE (Finish):** Gateway (10th, 3-15)

**1986-87 RECORD:** 5-21  
**COLORS:** Purple and Gold  
**ASSISTANT COACHES:** Angie Lee and Bonnie Henrickson  
**LETTERWINNERS RETURNING/LOST:** 6/NA  
**SPORTS INFORMATION DIRECTOR:** Bonnie Barker  
**SID PHONE: (Office/Home):** 309-298-1663/309-833-4811  
**SERIES RECORD (Last Meeting):** UNI 6-5 (1987, UNI 53, WIU 52)



Dec. 29 at Wichita, KS  
Feb. 27 at Cedar Falls, IA

## Wichita State Shockers

**HEAD COACH:** Karen Harden  
**ALMA MATER:** West Chester State, 1976  
**CAREER RECORD:** 61-97 (6 yrs)  
**RECORD AT WICHITA STATE:** 48-61  
(4 yrs)

RETURNING STARTERS	POS	PPG
Crystal Westfield	F	17.2
Dawna Weber	C	12.4
Lori Findahl	F	10.4
Kristi Savage	G	2.2

**LOCATION:** Wichita, KS  
**ARENA (Capacity):** Levitt Arena (10,666)  
**ATHLETIC DIRECTOR:** Tom Shupe  
**ENROLLMENT:** 16,843  
**CONFERENCE (Finish):** Gateway (8th, 5-9)

**1986-87 RECORD:** 12-14  
**COLORS:** Yellow and Black  
**ASSISTANT COACH:** Kim Hansen  
**LETTERWINNERS RETURNING/LOST:** 8/1

**SPORTS INFORMATION DIRECTOR:** Scott Schumacher

**SID PHONE: (Office/Home):**

316-689-3265/316-686-7168

**PRESS BOX PHONE:** 316-689-3299

**SERIES RECORD (Last Meeting):** WSU 7-1 (1987, WSU 75, UNI 55)



Feb. 18 at Cedar Falls, IA

## Wisconsin-Green Bay Phoenix

**HEAD COACH:** Carol Hammerle  
**ALMA MATER:** Northern Michigan, 1970  
**CAREER RECORD:** 236-125 (14 yrs)  
**RECORD AT WISCONSIN-GREEN BAY:** 236-125 (14 yrs)

RETURNING STARTERS	POS	PPG
Sue Aspenon	G	11.1
Donna Gunville	G	13.6
Karen Kupper	C	6.6

**LOCATION:** Green Bay, WI  
**ARENA (Capacity):** Phoenix Sports Center (2,300)

**ATHLETIC DIRECTOR:** Dan Spielmann  
**ENROLLMENT:** 6,000  
**CONFERENCE (Finish):** Independent

**1986-87 RECORD:** 24-6  
**COLORS:** Red and White  
**ASSISTANT COACH:** Ada Gee  
**LETTERWINNERS RETURNING/LOST:** 8/2

**SPORTS INFORMATION DIRECTOR:** Steve Swan

**SID PHONE: (Office/Home):**

414-465-2145/414-434-2768

**SERIES RECORD (Last Meeting):** 1st Meeting

**POST-SEASON PLAY:** 3rd in NAIA National Tournament

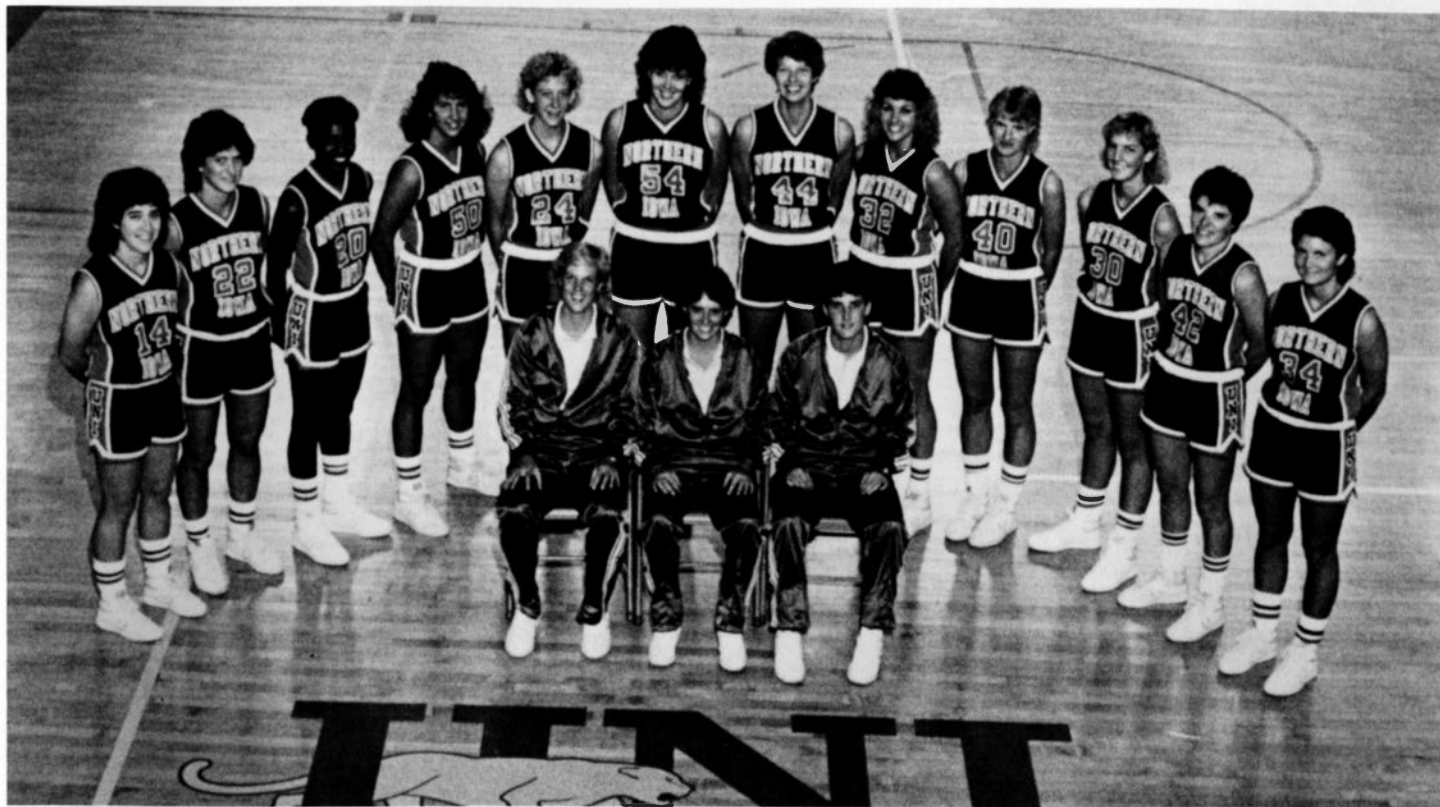




# Panther History vs. All Opponents

Opponent				First Game	Last Result	
	G	W	L		UNI	Opp
Augustana (IL)	2	1	1	1980-81	66	52
Augustana (SD)	3	2	1	1981-82	71	72
Bradley	8	0	8	1983-84	82	90
Buena Vista	1	1	0	1974-75	86	43
Central	4	2	2	1979-80	61	73
Central Michigan	1	1	0	1976-77	69	48
Central Missouri	2	1	1	1975-76	61	88
Chicago State	1	0	1	1986-87	76	82
Clark	1	1	0	1975-76	66	38
Concordia	1	1	0	1980-81	87	54
Creighton	1	0	1	1986-87	75	82
DePaul	2	0	2	1982-83	59	77
Dordt	1	1	0	1974-75	64	49
Drake	17	3	14	1975-76	61	90
Dubuque	1	1	0	1979-80	72	55
Eastern Illinois	11	2	9	1979-80	70	81
Eastern Washington	1	0	1	1984-85	60	80
Emporia State	1	0	1	1979-80	73	93
Graceland	3	3	0	1974-75	78	39
Grand View	11	6	5	1974-75	77	73
Illinois-Chicago	4	2	2	1982-83	95	84
Illinois State	10	1	9	1976-77	59	79
Indiana State	8	1	7	1983-84	70	81
Iowa	7	1	6	1974-75	64	71
Iowa State	16	3	13	1974-75	41	76
Iowa Wesleyan	3	2	1	1974-75	64	45
Lincoln (IL)	1	0	1	1980-81	71	82
Loras	6	6	0	1979-80	88	70
Loyola	2	0	2	1983-84	62	80
Luther	16	5	11	1974-75	74	42
Mankato State	2	1	1	1980-81	69	71
Marquette	3	1	2	1981-82	64	78
Marycrest	4	4	0	1979-80	95	64
Maryland-Baltimore County	1	1	0	1986-87	84	68
Minnesota-Duluth	1	1	0	1980-81	73	58
Missouri	2	0	2	1983-84	54	85
Montana State	1	1	0	1985-86	73	69
Morningside	1	1	0	1980-81	70	60
Mt. Mercy	6	4	2	1975-76	67	52
Nebraska-Omaha	3	1	2	1979-80	76	82
Nevada-Las Vegas	1	0	1	1985-86	65	79

Opponent				First Game	Last Result	
	G	W	L		UNI	Opp
North Central	1	1	0	1981-82	71	66
North Dakota	1	1	0	1977-78	68	50
North Iowa Area CC	4	3	1	1978-79	69	87
Northeast Missouri	5	3	1	1980-81	73	63
Northern Illinois	5	1	4	1979-80	72	86
Northern Michigan	1	0	1	1978-79	64	75
Northern State	2	1	1	1981-82	60	74
Northwestern	5	4	1	1974-75	79	55
Northwest Missouri	2	1	1	1975-76	59	79
Oklahoma City	4	0	1	1982-83	55	62
Pittsburg State	1	0	1	1979-80	69	79
St. Francis	1	1	0	1982-83	78	58
St. Louis	1	1	0	1982-83	67	36
Simpson	4	3	1	1976-77	86	60
South Dakota	4	1	3	1977-78	87	89
South Dakota State	2	2	0	1979-80	73	43
Southeast Missouri State	1	1	0	1981-82	59	56
Southern Illinois	8	0	8	1983-84	64	87
Southern Illinois-Edwardsville	1	1	0	1982-83	81	59
Southwest Missouri State	10	4	6	1980-81	63	95
Southwest State (MN)	1	1	0	1980-81	65	46
St. Ambrose	9	3	6	1979-80	46	72
St. Cloud State	9	1	8	1977-78	53	84
Texas-El Paso	1	1	0	1985-86	73	65
Upper Iowa	1	1	0	1981-82	81	62
Wartburg	12	7	5	1974-75	83	55
Western Illinois	11	6	5	1979-80	56	52
Westmar	1	1	0	1974-75	91	53
Wichita State	8	1	7	1983-84	55	75
William Penn	12	1	11	1974-75	68	76
Winona State	2	2	0	1982-83	89	77
Wisconsin	3	0	3	1983-84	48	72
Wisconsin-Eau Claire	1	1	0	1978-79	62	52
Wisconsin-LaCrosse	8	0	8	1974-75	58	70
Wisconsin-Milwaukee	3	3	0	1981-82	81	80
Wisconsin-Stevens Point	1	1	0	1980-81	66	61
Wyoming	1	0	1	1981-82	72	79



**Front Row** — Assistant coach Mary Otten, Head coach Kimberly Mayden, Assistant coach Jane McConnell;  
**Second Row** — Molly Kelly, Kris Huffman, Loretha Mosley, Sandy Grabowski, Cindy Harms, Chris Shafer, Dianne Peelen, Kim Smythe, Diane Roberts, Kathy Kolstedt, Rhonda Wiebold, Nicki Rohde.

## Northern Iowa Media Outlets

### Newspapers

**WATERLOO COURIER:** Russ Smith, Sports Editor, P.O. Box 540, Waterloo, IA 50704 ..... 319-291-1466  
**DES MOINES REGISTER:** Mike Wegner, Sports Editor, P.O. Box 957, Des Moines, IA 50304 ..... 1-800-532-1455 (in Iowa), 1-800-247-5346 (out-of-state)  
**THE GAZETTE:** Mark Dukes, Sports Editor, 500 3rd Ave. S.E., Cedar Rapids, IA 52401 ..... 319-398-8257  
**NORTHERN IOWAN:** Sports Editor, University of Northern Iowa, Cedar Falls, IA 50614 ..... 319-273-2157  
**UNITED PRESS INTERNATIONAL:** Sports Editor, 317 6th Ave., Suite 610, Des Moines, IA 50309 .... 1-800-362-2337  
**ASSOCIATED PRESS:** Chuck Schoffner, P.O. Box 1741, Des Moines, IA 50306 ..... 1-800-362-2580  
**QUAD CITY TIMES:** Sports Editor, Davenport, IA 52801 ..... 319-383-2220

### Television

**KWWL-TV:** Bob Healey, Sports Director, KWWL Bldg., Waterloo, IA 50703 ..... 319-291-1246  
**KCRG-TV:** John Campbell, Sports Director, 2nd Ave. at 5th St. S.E., Cedar Rapids, IA 52401 ..... 319-398-8391  
 1-800-332-5443

**KGAN-TV:** Pete Seyfer, Sports Director, P.O. Box 3131, Cedar Rapids, IA 52406 ..... 319-395-6188, 1-800-222-5426  
**WHO-TV:** Sports Director, 1801 Grand Ave., Des Moines, IA 50308 ..... 515-242-3500  
**KCCI-TV:** Sports Director, Des Moines, IA 50309 ..... 515-247-8800

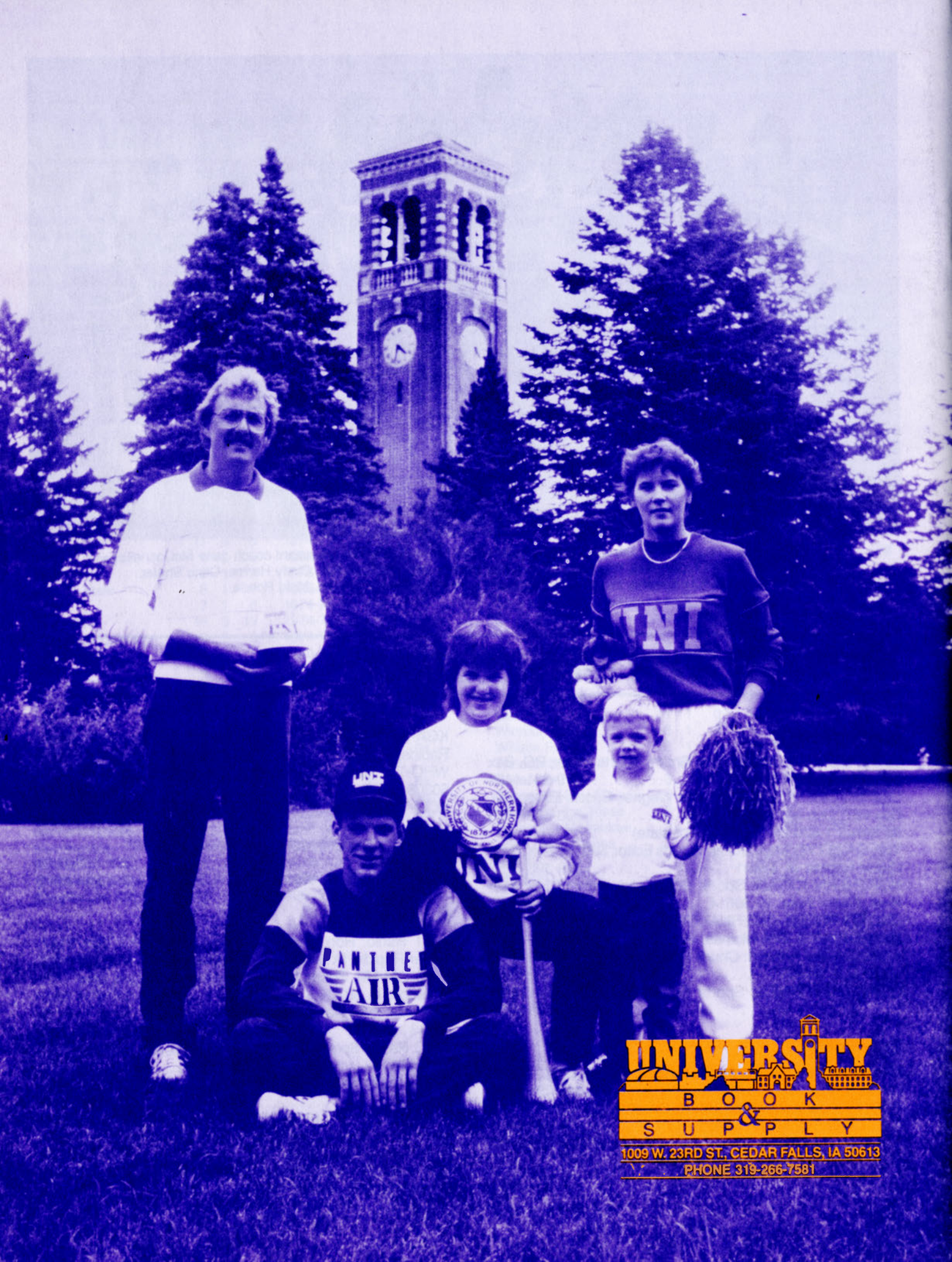
**WOC-TV:** Sports Director, Davenport, IA 52801 ..... 319-383-7000

**WOI-TV:** Sports Director, Ames, IA 50011 .... 515-294-4333

### Radios

**WMT Radio:** Ron Gonder, Sports Director, P.O. Box 2147, Cedar Rapids, IA 52406 .... 1-800-332-5201, 319-395-0533  
**KXEL AM-FM:** Sports Director, Highway 218 East, Box 1540, Waterloo, IA 50704 ..... 319-234-6397  
**KCFI AM:** Kelly Neff, Sports Director, Box 157, Cedar Falls, IA 50613 ..... 319-277-1918  
**WHO Radio:** Sports Director, 1801 Grand Ave., Des Moines, IA 50308 ..... 515-242-3500  
**KWLO Radio:** Don Ross, Sports Director, Box 1330, Waterloo, IA 50703 ..... 319-234-2200  
**UNIVERSITY OF NORTHERN IOWA:** Nancy Justis, Sports Information Director, UNI-Dome NW, University of Northern Iowa, Cedar Falls, IA 50614 ..... 319-273-6354  
**KHAK AM-FM:** Bob Brooks, Sports Director, Suite 450, 425 Second St. S.E., Cedar Rapids, IA 52401





**UNIVERSITY**  
BOOK  
&  
SUPPLY  
1009 W. 23RD ST. CEDAR FALLS, IA 50613  
PHONE 319-266-7581