

Summer 2008

## UNI Summer School Survey 2008

University of Northern Iowa

*Let us know how access to this document benefits you*

Copyright ©2008 University of Northern Iowa

Follow this and additional works at: [https://scholarworks.uni.edu/ire\\_documents](https://scholarworks.uni.edu/ire_documents)



Part of the [Higher Education Commons](#)

---

### Recommended Citation

University of Northern Iowa, "UNI Summer School Survey 2008" (2008). *Institutional Research Documents*. 86.

[https://scholarworks.uni.edu/ire\\_documents/86](https://scholarworks.uni.edu/ire_documents/86)

This Article is brought to you for free and open access by the Institutional Research & Effectiveness at UNI ScholarWorks. It has been accepted for inclusion in Institutional Research Documents by an authorized administrator of UNI ScholarWorks. For more information, please contact [scholarworks@uni.edu](mailto:scholarworks@uni.edu).

# Institutional Research Reports

University of Northern Iowa

UNI Summer  
School Survey  
2008



**UNI Summer School Survey  
June 2008**

This report is a summary of the University of Northern Iowa (UNI) Summer School Survey given to students participating in advanced registration for summer school on March 12-14, 2008. The questions on the Summer School Survey were designed to help gain a better understanding of the patterns of usage of summer school courses and student’s preferences for scheduling.

All students participating in electronic registration for summer 2008 were presented with two paired questions randomly selected from a list of ten items prior to advancing to the registration screen during the summer registration process. The survey was completed by 967 students. Approximately 180 students answered each question (see Figure 1 for the distribution of respondents by college). Respondents were asked to answer

questions regarding their preferences for summer school sessions at UNI. They were asked to indicate the extent to which they agreed or disagreed to most of the survey statements on a Likert scale ranging from 1 (strongly disagree) to 5 (strongly agree). Some of the items required the student to indicate a “yes” or “no” response, while others required a specific date or time selection.

Figure 1. Distribution of Respondents by College

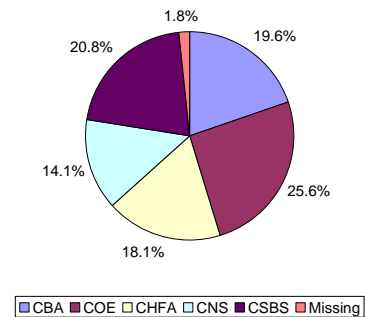
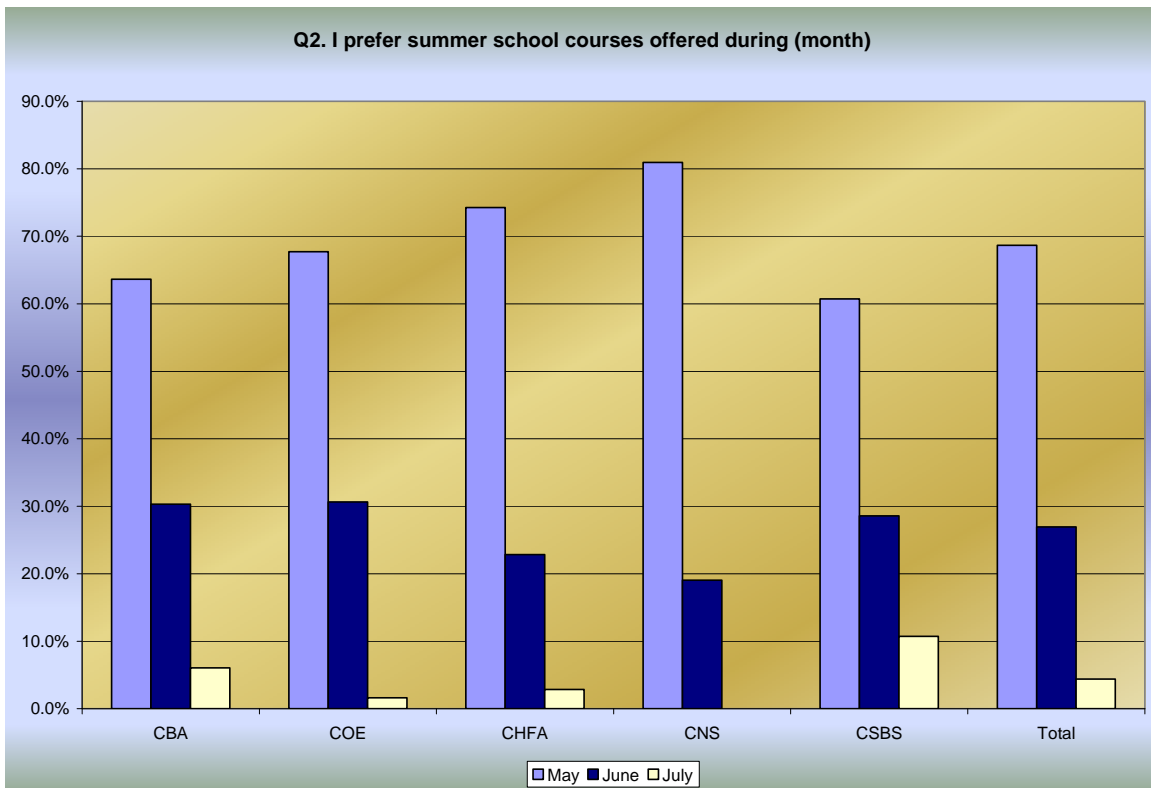
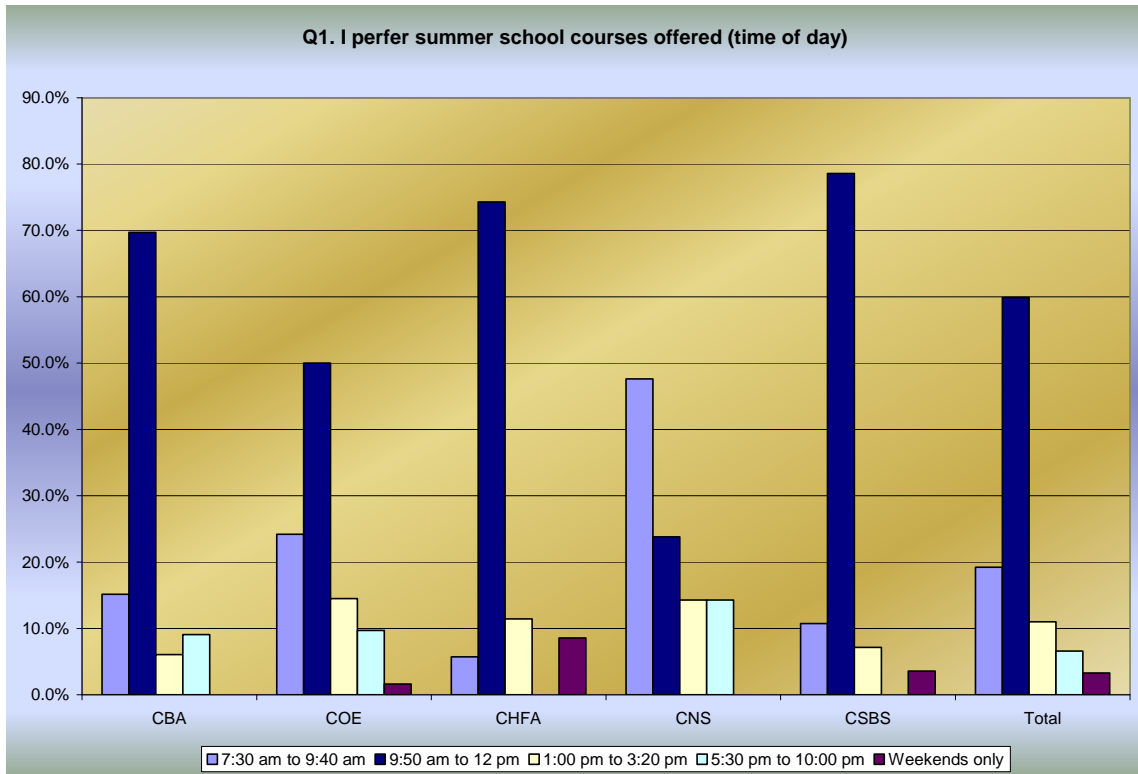


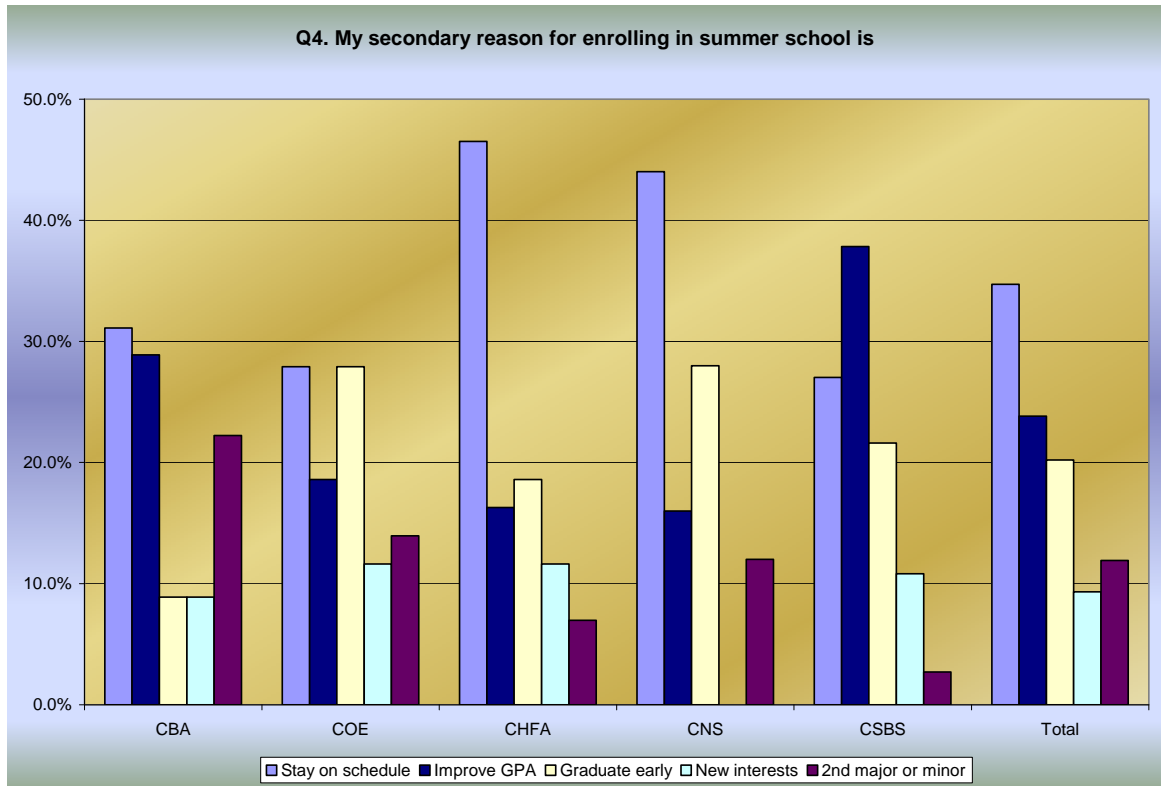
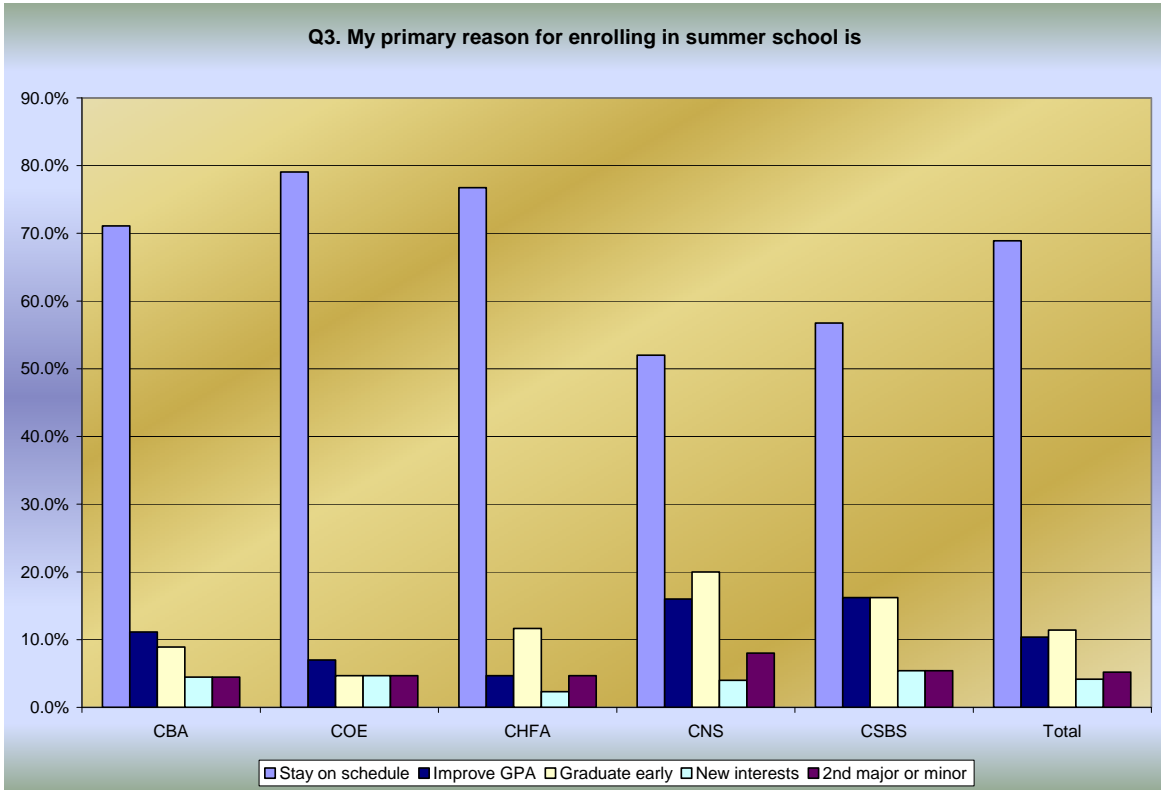
Table 1 presents demographic information for student respondents to the UNI Summer School Survey. The data is then shown by college to illustrate any differences in responding. Finally, trends in responding over five years are presented for examination.

**Table 1. Demographic Characteristics by College**

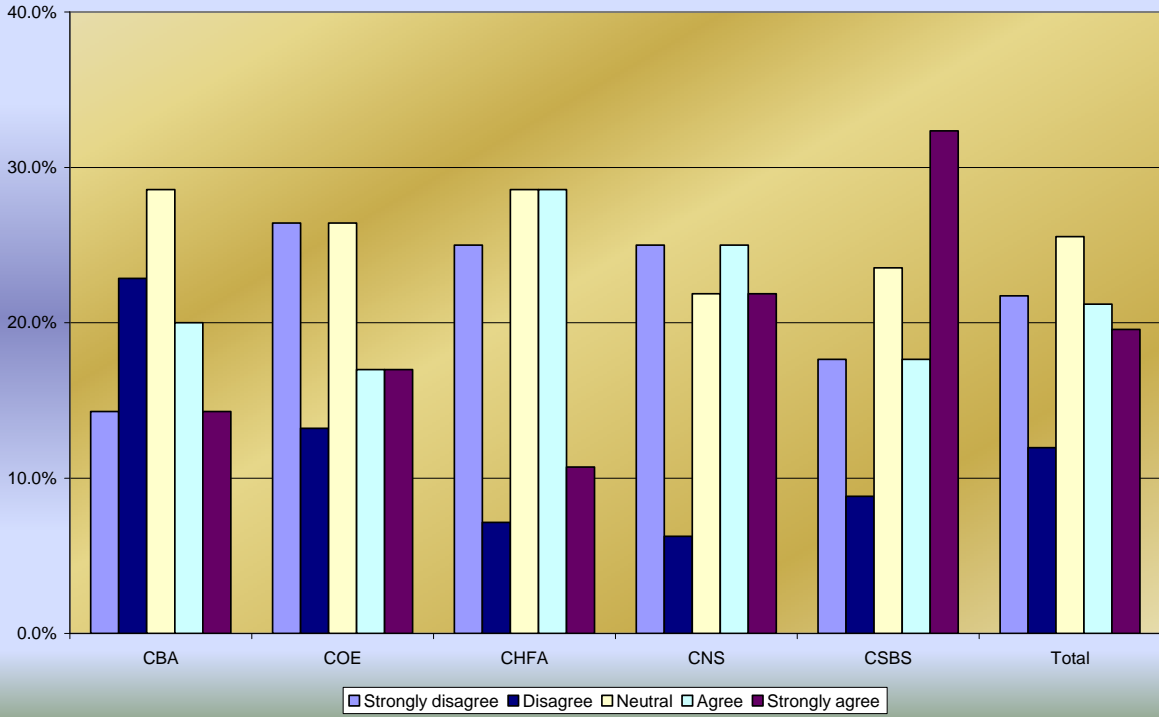
	Business Admin.		Education		Humanities and Fine Arts		Natural Sciences		Social and Behavioral Sciences		Unknown		Total	
	N	%	N	%	N	%	N	%	N	%	N	%	N	%
<b>Sex</b>														
Male	100	55.6	67	28.5	45	27.1	81	62.3	72	37.7	5	29.4	370	40.3
Female	80	44.4	168	71.5	121	72.9	49	37.7	119	62.3	12	70.6	549	59.7
Total	180	100.0	235	100.0	166	100.0	130	100.0	191	100.0	17	100.0	919	100.0
<b>Age</b>														
19 or under	8	4.4	22	9.4	22	13.3	7	5.4	11	5.8	10	58.8	80	8.7
20-23	149	82.8	138	58.7	124	74.7	88	67.7	138	72.3	7	41.2	644	70.1
24-29	12	6.7	38	16.2	14	8.4	16	12.3	23	12.0	0	0.0	103	11.2
30-39	10	5.6	24	10.2	3	1.8	12	9.2	12	6.3	0	0.0	61	6.6
40-55	0	0.0	12	5.1	3	1.8	7	5.4	6	3.1	0	0.0	28	3.0
Over 55	1	0.6	1	0.4	0	0.0	0	0.0	1	0.5	0	0.0	3	0.3
Total	180	100.0	235	100.0	166	100.0	130	100.0	191	100.0	17	100.0	919	100.0
<b>Race</b>														
Caucasian	158	90.8	210	91.7	145	93.5	111	88.1	167	91.3	16	100.0	807	91.4
African American	3	1.7	10	4.4	3	1.9	5	4.0	8	4.4	0	0.0	29	3.3
Native American	0	0.0	0	0.0	1	0.6	1	0.8	2	1.1	0	0.0	4	0.5
Asian/Pac. Island	3	1.7	3	1.3	0	0.0	1	0.8	0	0.0	0	0.0	7	0.8
Hispanic	3	1.7	4	1.7	5	3.2	2	1.6	4	2.2	0	0.0	18	2.0
Non-resident Alien	7	4.0	2	0.9	1	0.6	6	4.8	2	1.1	0	0.0	18	2.0
Total	174	100.0	229	100.0	155	100.0	126	100.0	183	100.0	16	100.0	883	100.0
<b>Classification</b>														
Unclassified	0	0.0	0	0.0	0	0.0	0	0.0	0	0.0	0	0.0	0	0.0
Freshman	8	4.4	11	4.7	11	6.6	4	3.1	8	4.2	8	47.1	50	5.4
Sophomore	27	15.0	38	16.2	33	19.9	30	23.1	23	12.0	7	41.2	158	17.2
Junior	91	50.6	70	29.8	51	30.7	52	40.0	85	44.5	0	0.0	349	38.0
Senior	49	27.2	54	23.0	57	34.3	34	26.2	54	28.3	2	11.8	250	27.2
Graduate	5	2.8	62	26.4	14	8.4	10	7.7	21	11.0	0	0.0	112	12.2
Total	180	100.0	235	100.0	166	100.0	130	100.0	191	100.0	17	100.0	919	100.0
<b>Residence Status</b>														
Resident	168	93.3	219	93.2	153	92.2	120	92.3	181	94.8	17	100.0	858	93.4
Non-resident Alien	12	6.7	16	6.8	13	7.8	10	7.7	10	5.2	0	0.0	61	6.6
Total	180	100.0	235	100.0	166	100.0	130	100.0	191	100.0	17	100.0	919	100.0

## Section 1. Summary of Findings

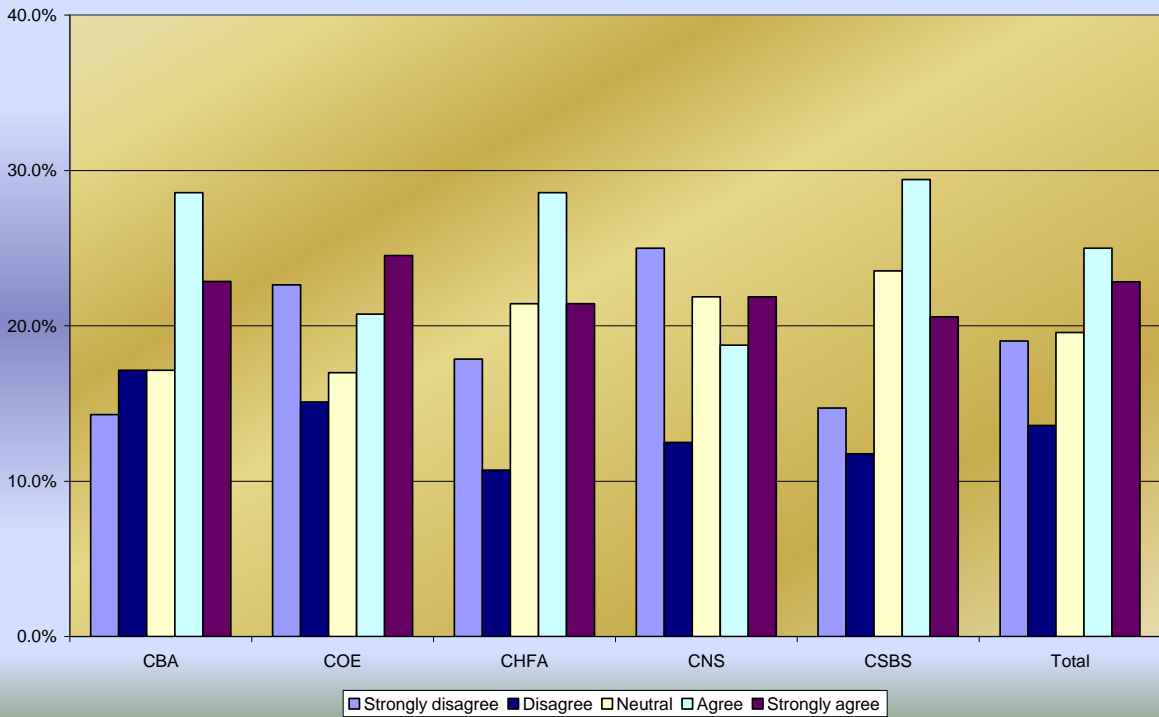




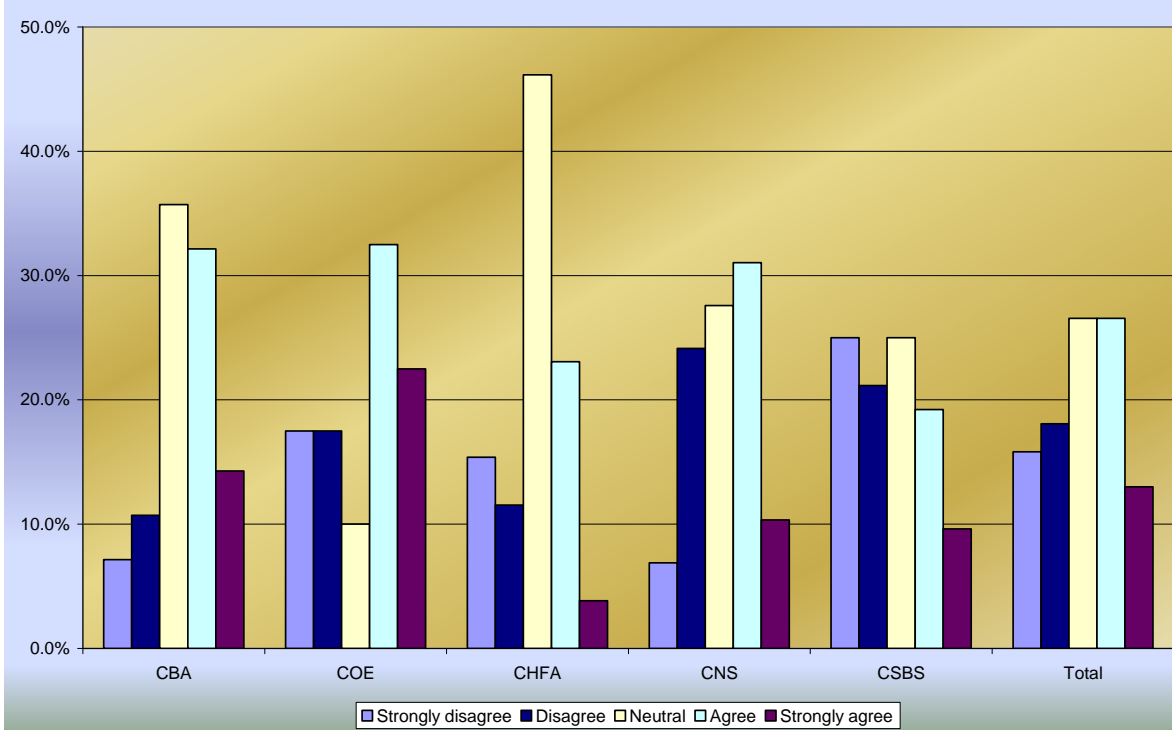
**Q5. Financial aid is a very important part of my decision to enroll in summer school**



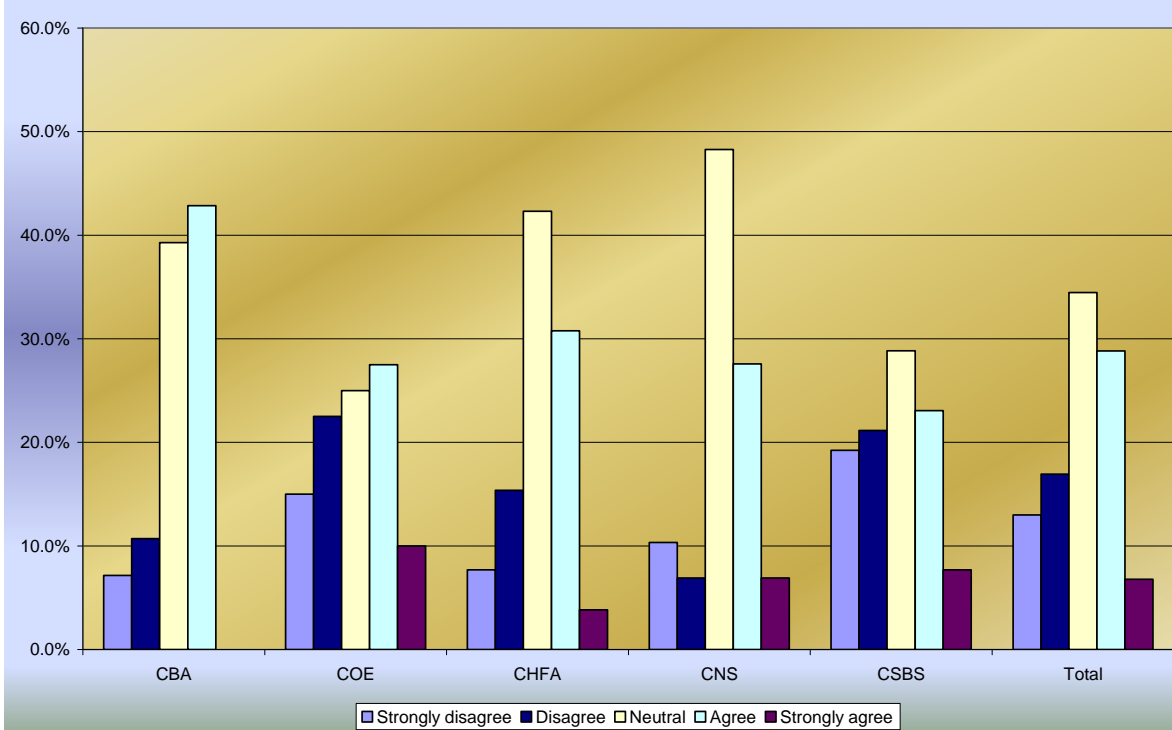
**Q6. Local employment is a very important part of my decision to enroll in summer school**



**Q7. The courses available in summer school this year meet my needs**

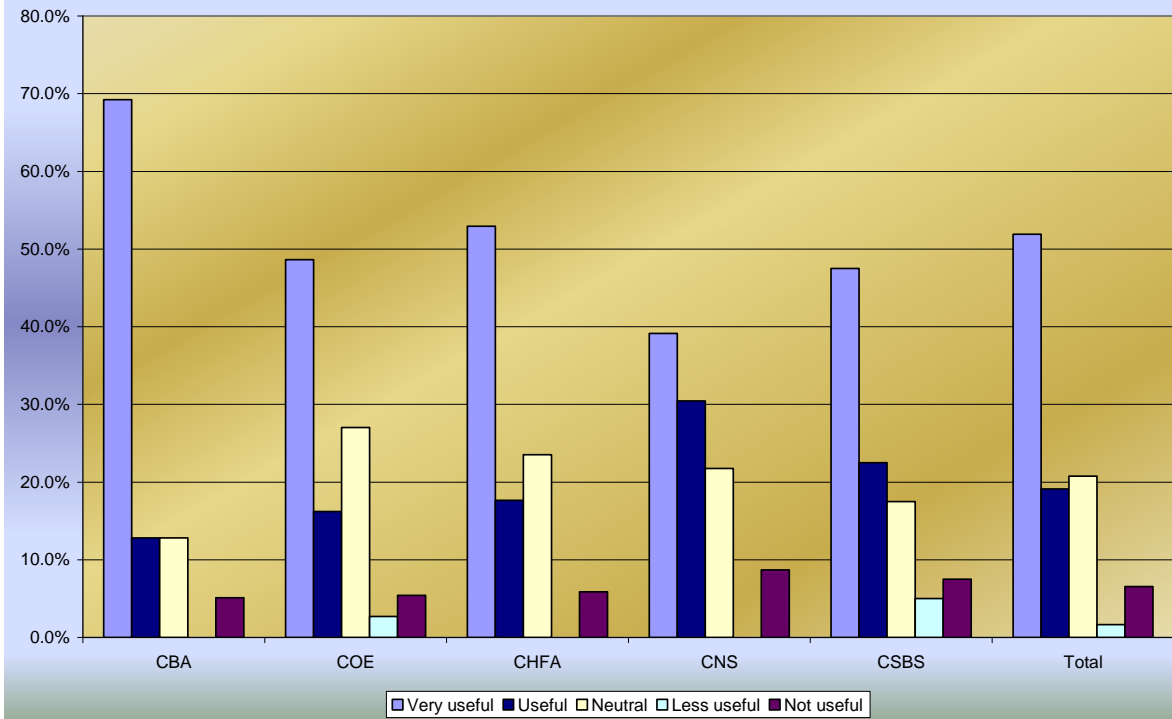


**Q8. The time at which courses are offered this summer meets my needs**

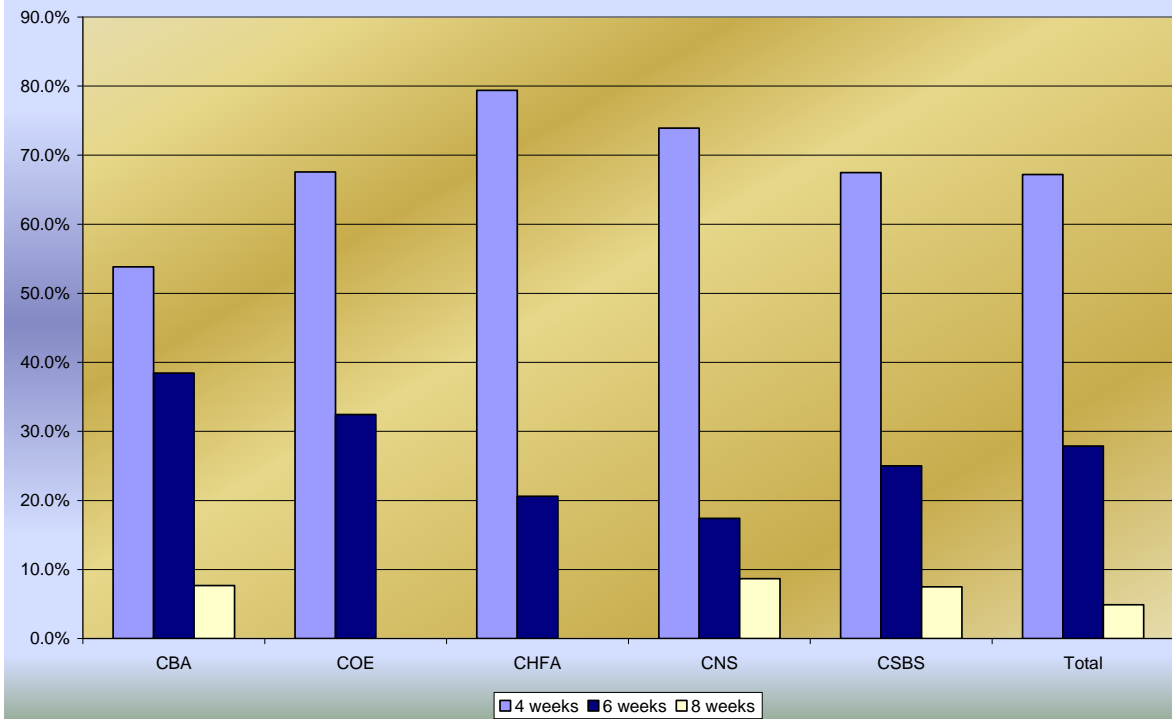




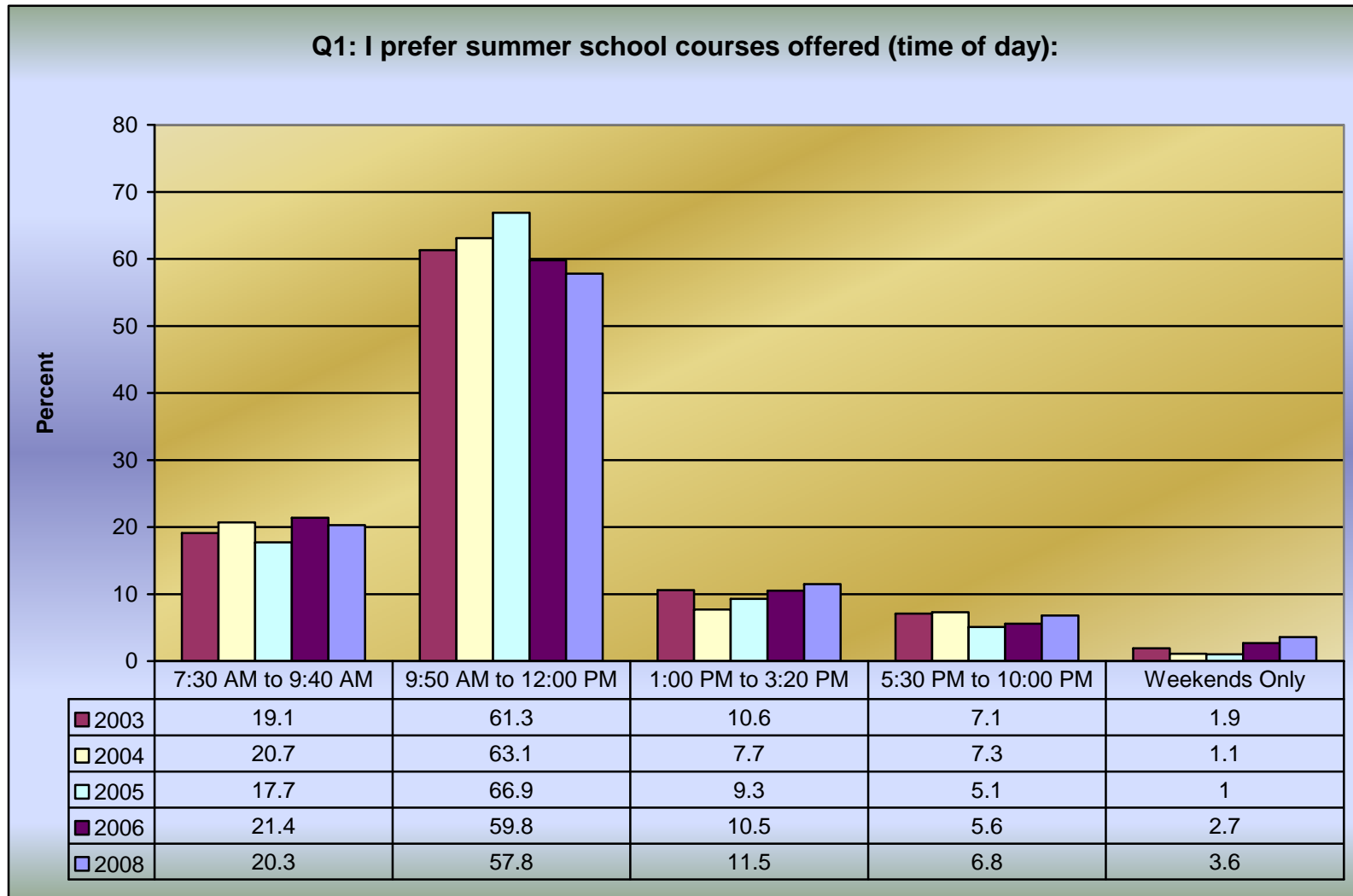
**Q9. Now that a May summer session is offered, how useful is this session for you**



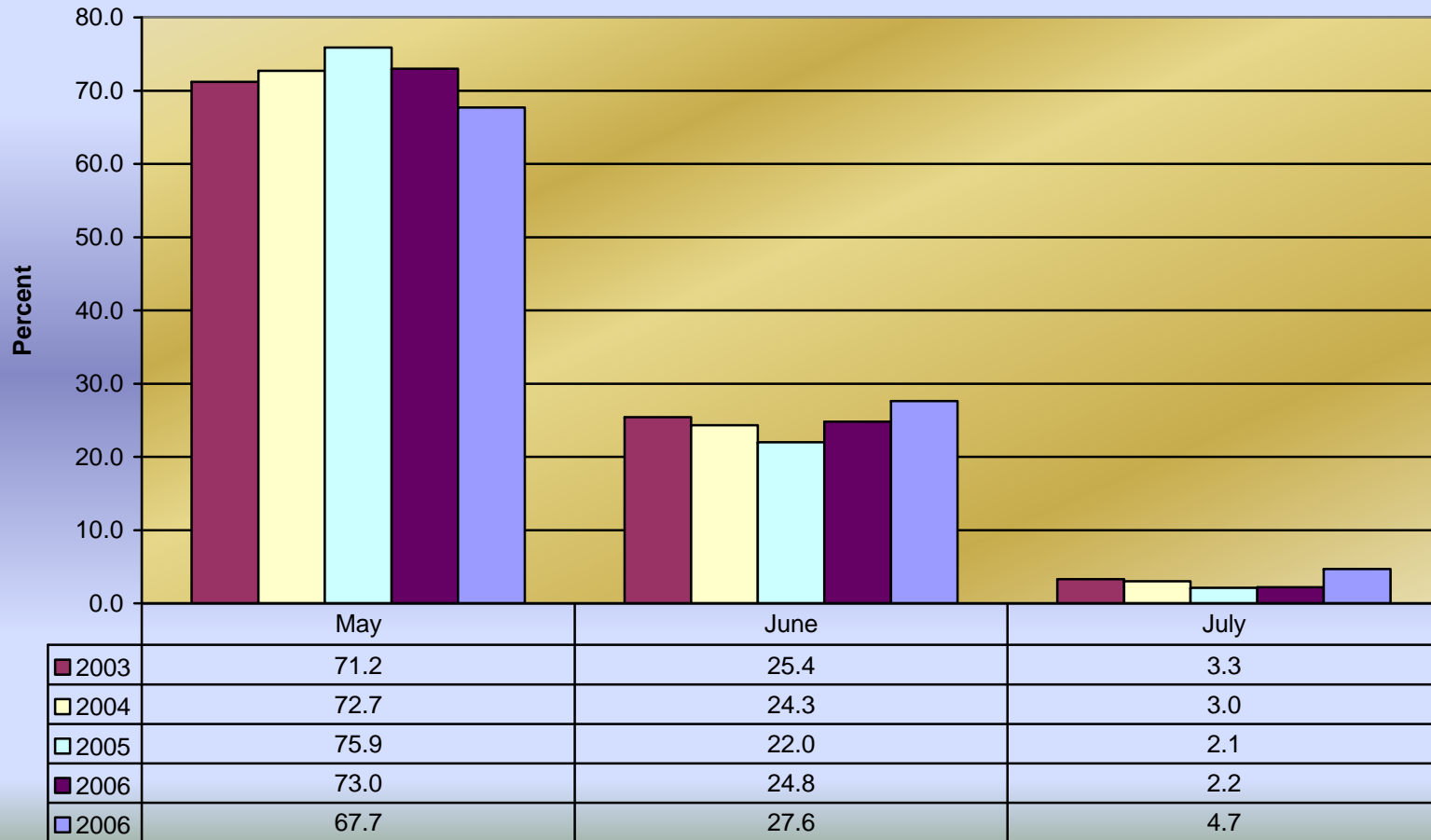
**Q10. I prefer summer school courses offered (length of session)**



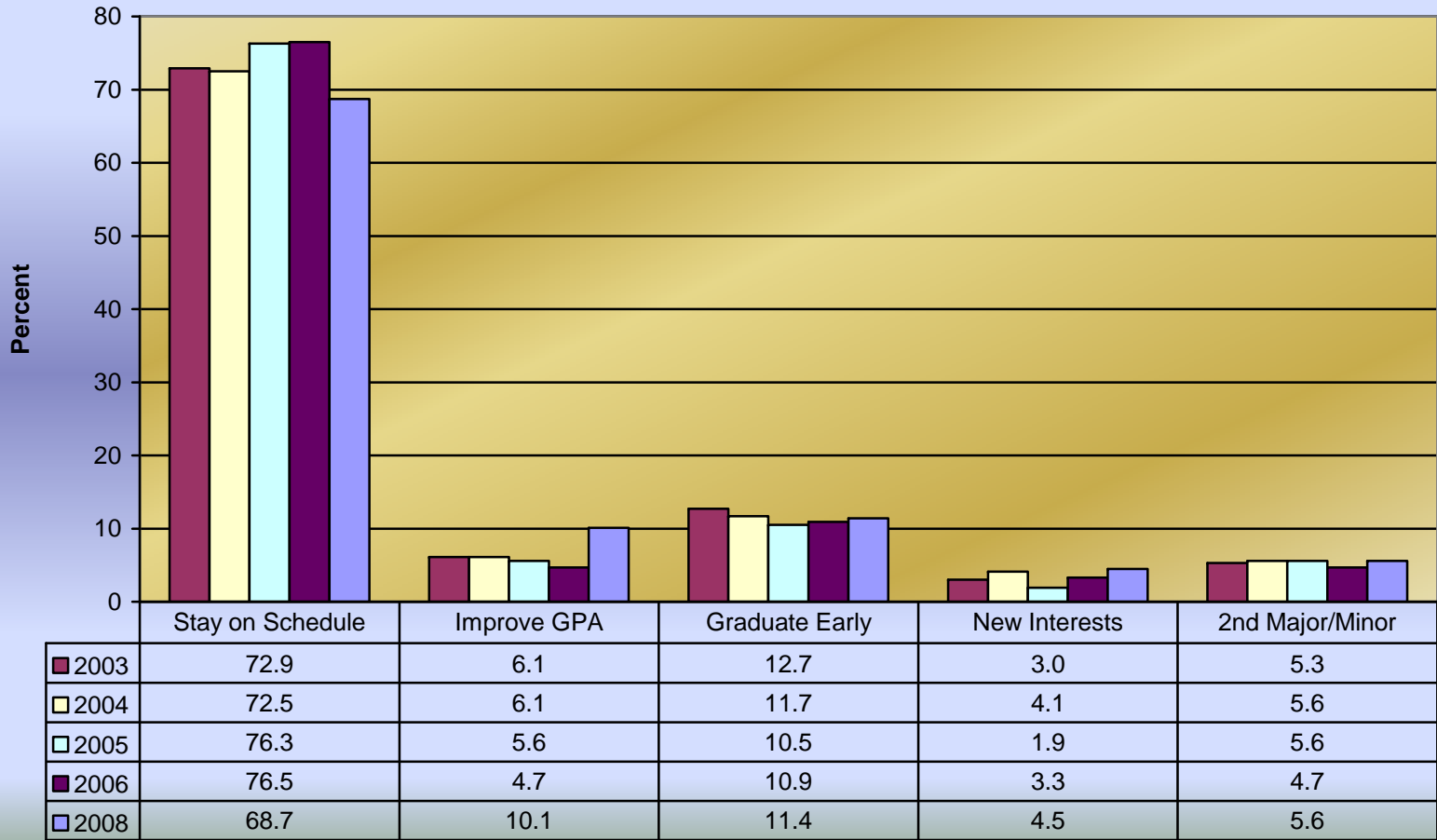
## Section 2. Multiple Year Comparison of Summer School Data: 2003-2008



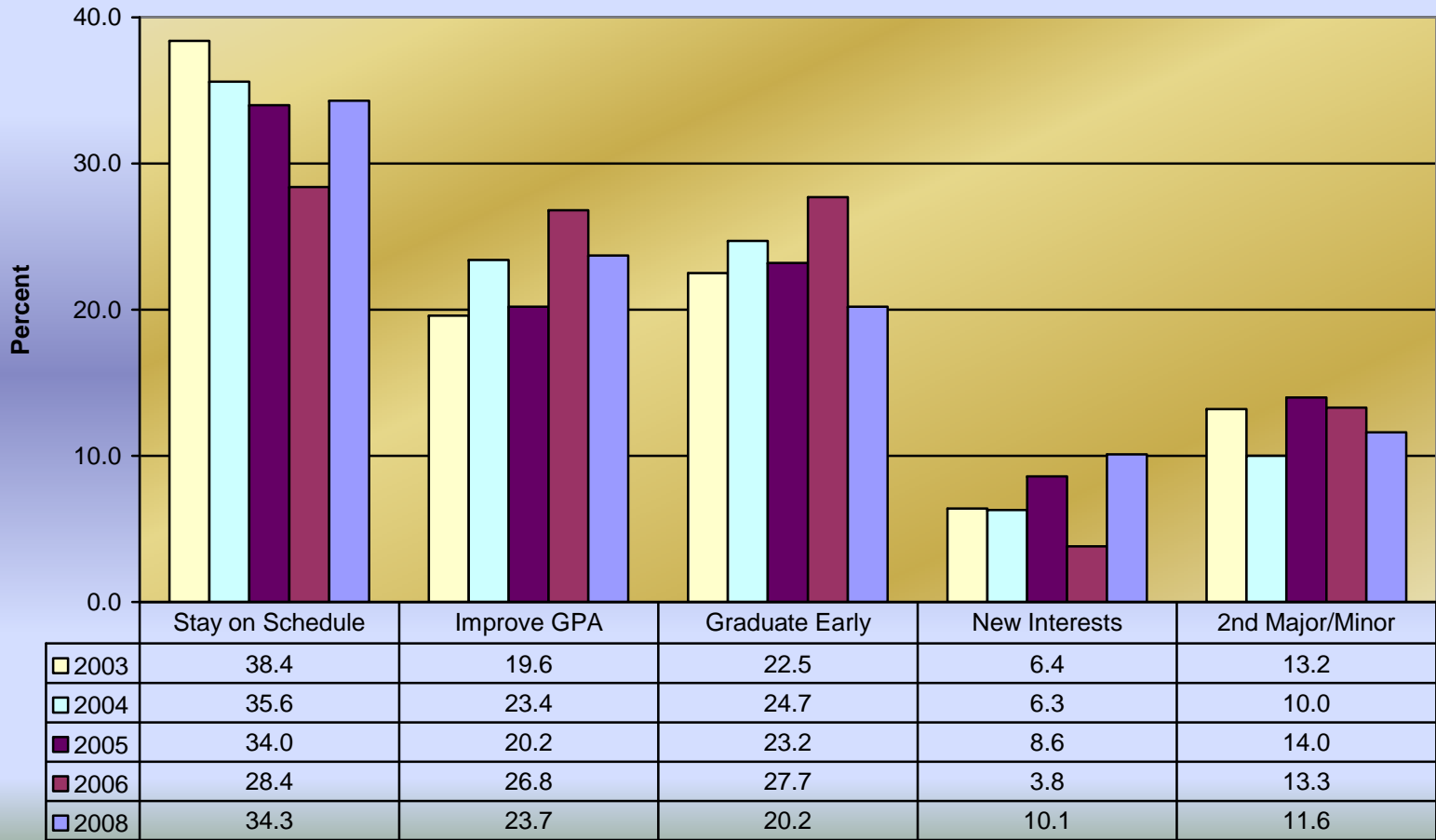
**Q2: I prefer summer school courses offered during (month):**



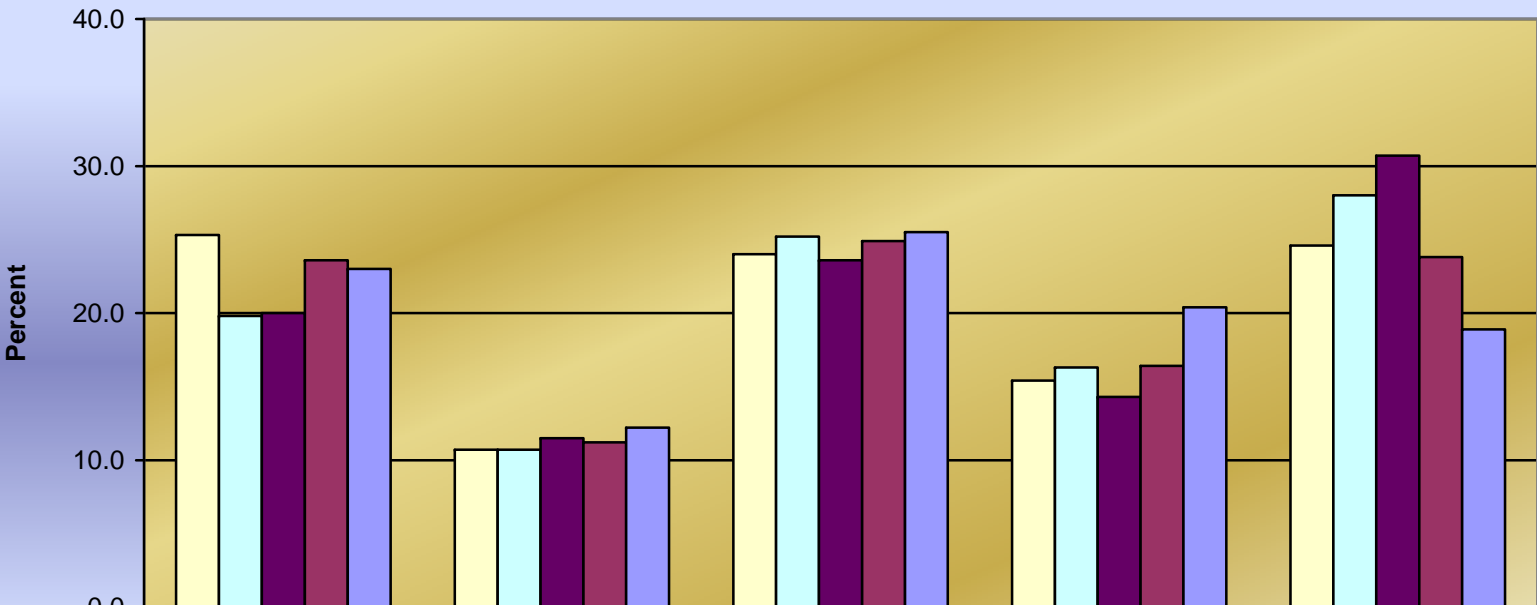
**Q3: My primary reason for enrolling in summer school is:**



**Q4: My secondary reason for enrolling in summer school is:**

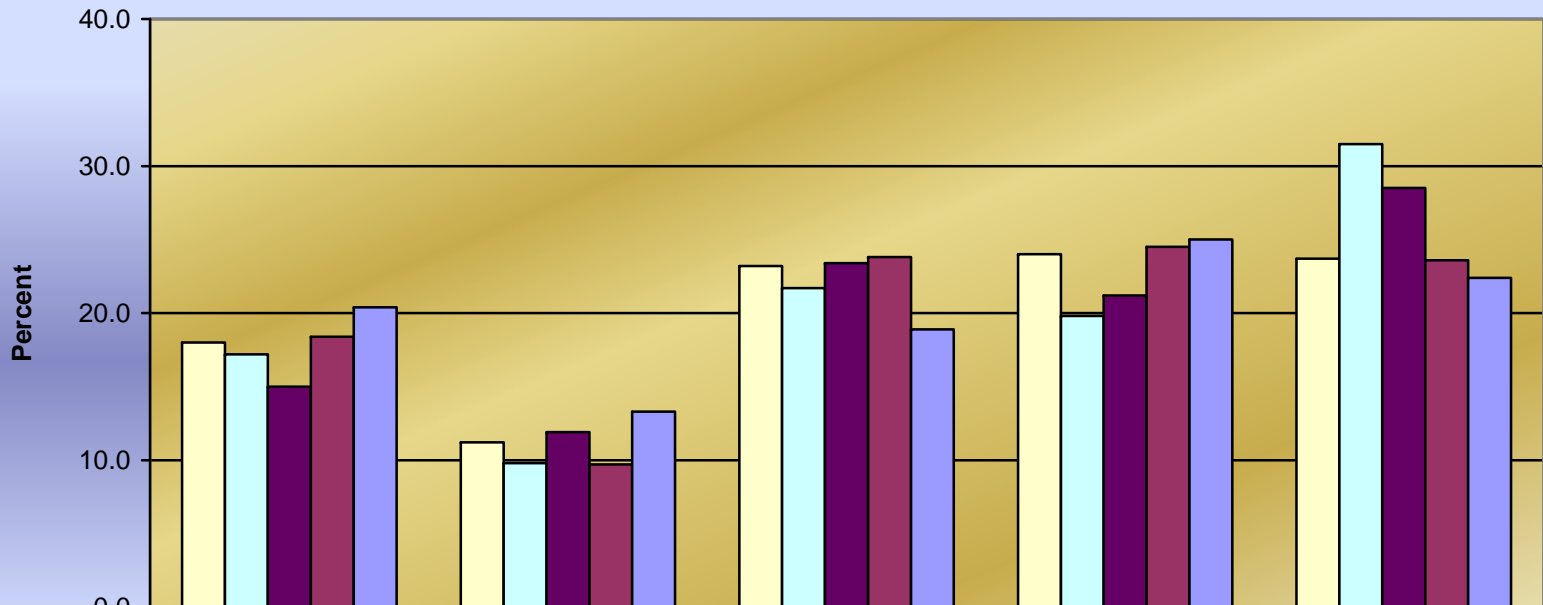


**Q5: Financial aid is a very important part of my decision to enroll in summer school.**



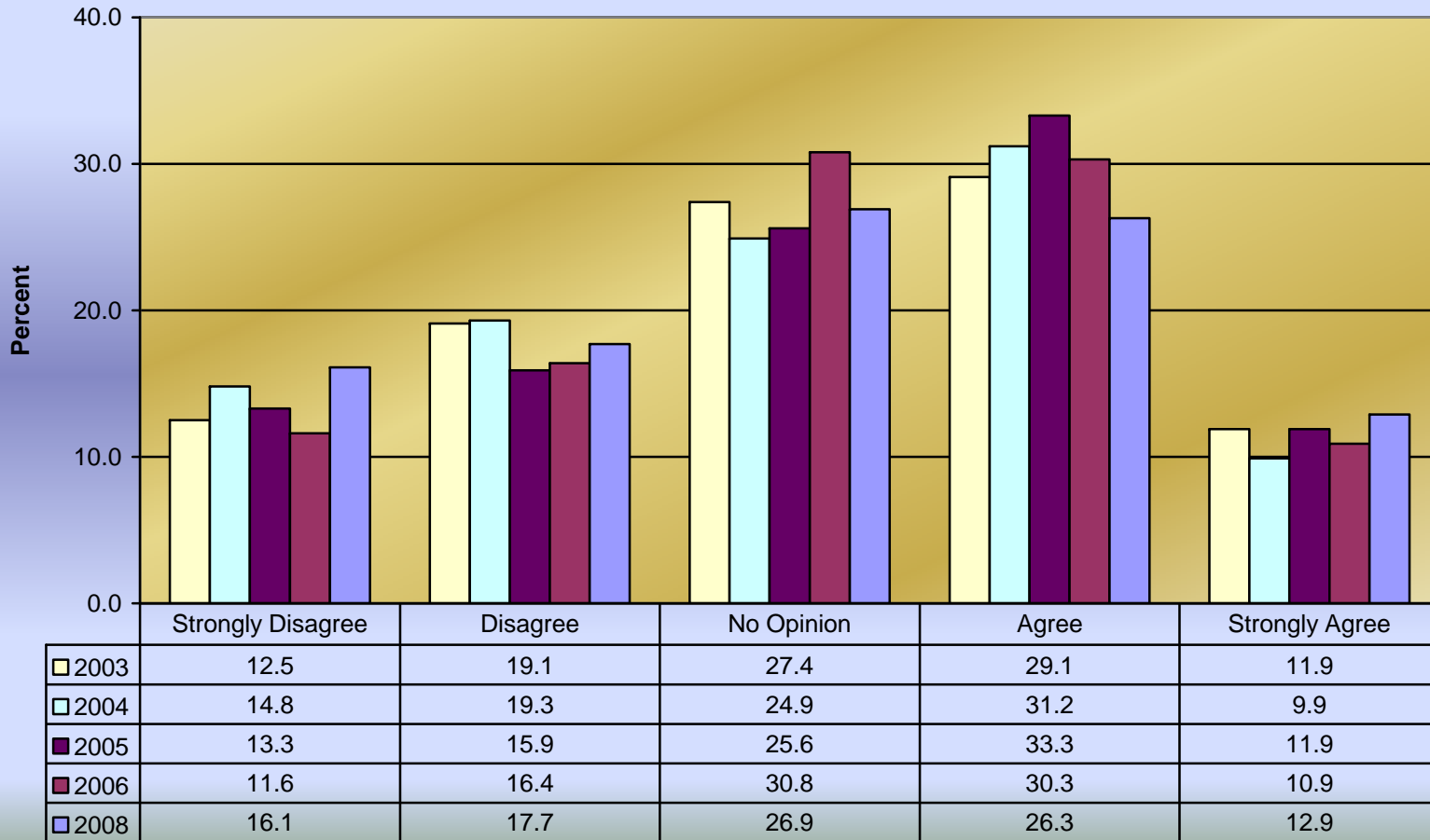
	Strongly Disagree	Disagree	No Opinion	Agree	Strongly Agree
2003	25.3	10.7	24.0	15.4	24.6
2004	19.8	10.7	25.2	16.3	28.0
2005	20.0	11.5	23.6	14.3	30.7
2006	23.6	11.2	24.9	16.4	23.8
2008	23.0	12.2	25.5	20.4	18.9

**Q6: Local employment is a very important part of my decision to enroll in summer school.**



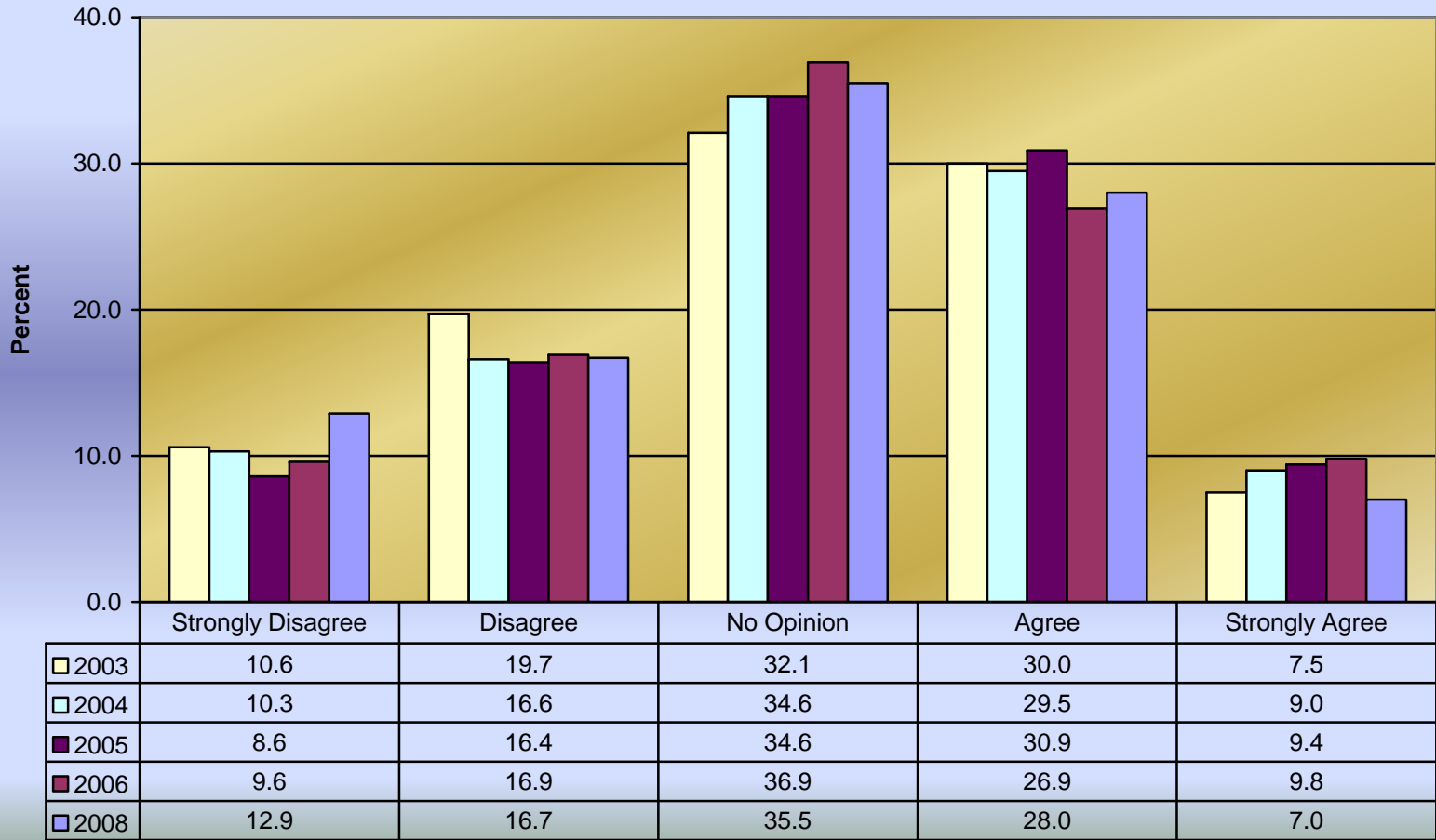
	Strongly Disagree	Disagree	No Opinion	Agree	Strongly Agree
2003	18.0	11.2	23.2	24.0	23.7
2004	17.2	9.8	21.7	19.8	31.5
2005	15.0	11.9	23.4	21.2	28.5
2006	18.4	9.7	23.8	24.5	23.6
2008	20.4	13.3	18.9	25.0	22.4

**Q7: The courses available in summer school this year meet my needs.**

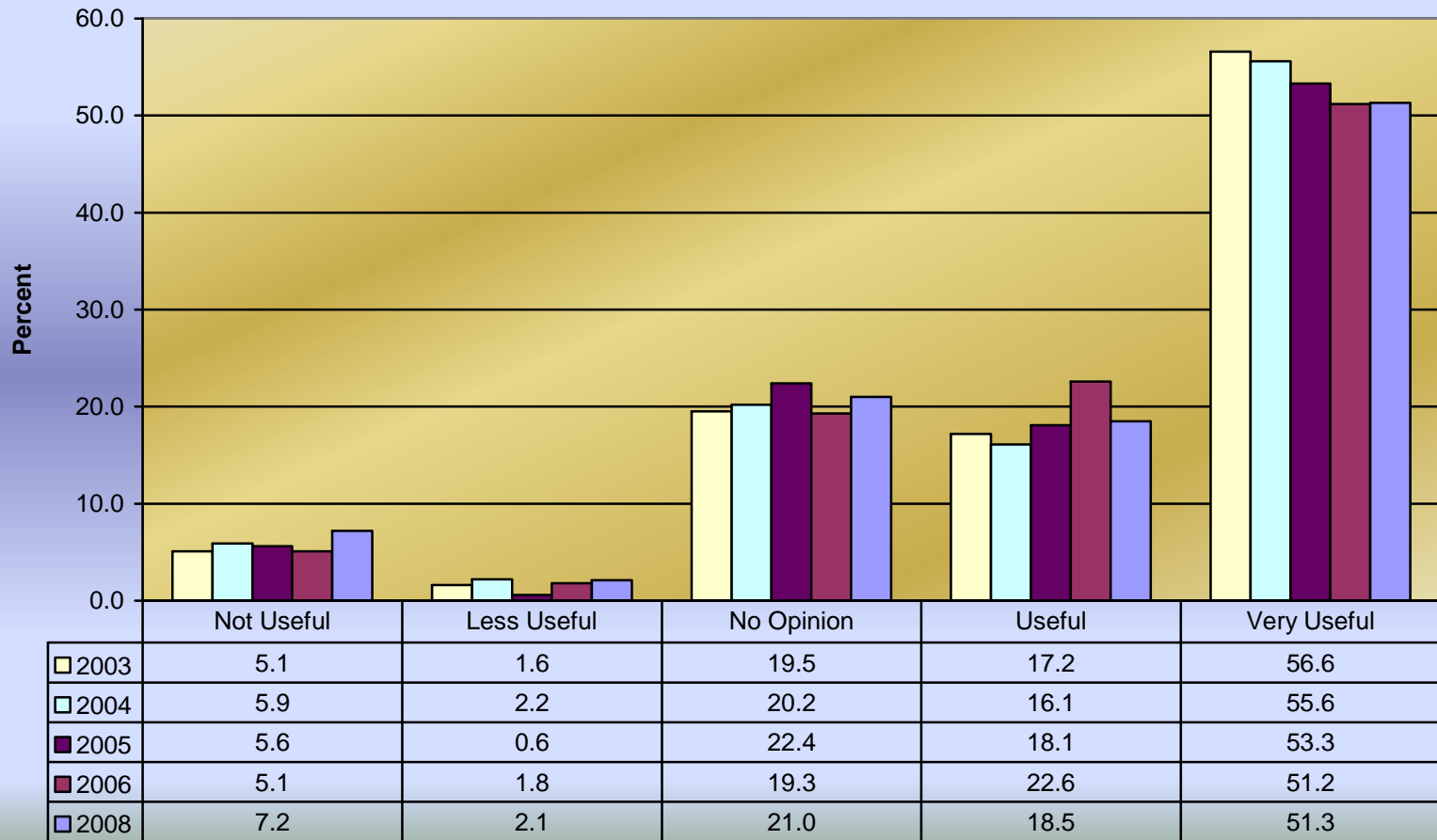




**Q8: The time at which courses are offered this summer meets my needs.**



**Q9: Now that a new May session is offered, how useful is this session for you?**



**Q10: I prefer summer school courses offered during (length of session):**

