

Summer 6-2006

UNI Summer School Survey June 2006

University of Northern Iowa

Follow this and additional works at: http://scholarworks.uni.edu/ire_documents



Part of the [Higher Education Commons](#)

Let us know how access to this document benefits you

Recommended Citation

University of Northern Iowa, "UNI Summer School Survey June 2006" (2006). *Institutional Research Documents*. 85.
http://scholarworks.uni.edu/ire_documents/85

This Article is brought to you for free and open access by the Institutional Research & Effectiveness at UNI ScholarWorks. It has been accepted for inclusion in Institutional Research Documents by an authorized administrator of UNI ScholarWorks. For more information, please contact scholarworks@uni.edu.

UNI Summer School Survey



**Kristin M. Moser, Senior Research Analyst
Office of Institutional Research
University of Northern Iowa
104 Seerley Hall
Cedar Falls, IA 50614-0005
(319) 273-3050**

June 2006

Table of Contents

Page

Section I

Introduction	1
Method	1
Results	3

Summary of Responses

Q1	I prefer summer school courses offered (time of day)	5
Q2	I prefer summer school courses offered during (month)	6
Q3	My primary reason for enrolling in summer school is.....	7
Q4	My secondary reason for enrolling in summer school is	8
Q5	Financial aid is a very important part of my decision to enroll in summer school ...	9
Q6	Local employment is a very important part of my decision to enroll in summer school	10
Q7	The courses available in summer school this year meet my needs.....	11
Q8	The time at which courses are offered this summer meets my needs	12
Q9	Now that a new May summer session is offered, how useful is this session for you.....	13
Q10	I prefer summer school courses offered during (length of session)	14

Section II

Multiple Year Comparison of Summer School Data: 2002-2006	15
---	----

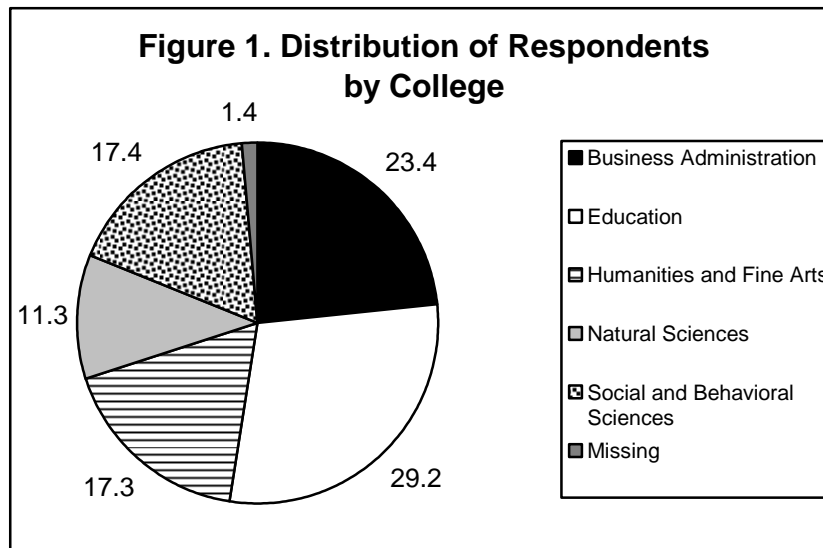
List of Figures and Tables

Figure 1: Distribution of Respondents by College	1
Table 1: Demographic Characteristics by College	2

Section I

Introduction

This report presents a summary of the University of Northern Iowa (UNI) Summer School Survey given to students participating in advanced registration for summer school on March 8-10, 2006. The questions on the Summer School Survey were designed to help gain a better understanding of the patterns of usage of summer school courses and student's preferences for scheduling. The survey was completed by 2,234 students. Approximately 450 students answered each question (see Figure 1 for the distribution of respondents by college).



Method

All students participating in electronic registration for Summer 2006 were presented with two paired questions randomly selected from a list of ten items prior to advancing to the registration screen during the summer registration process. Respondents were asked to answer questions regarding their preferences for summer school sessions at UNI. They were asked to indicate the extent to which they agreed or disagreed to most of the survey statements on a Likert scale ranging from 1 (strongly disagree) to 5 (strongly agree). Some of the items required the student to indicate a "yes" or "no" response, while others required a specific date or time selection.

Table 1 presents demographic information for student respondents to the UNI Summer School Survey. For the purposes of this study, demographic information consists of sex, race, grade classification, residency status, and age. We were unable to obtain demographic information for some respondents. This missing data is reflected in the decreased total N for each category. Throughout this report, most percentages were rounded to the nearest one tenth of a percent. Therefore, due to this rounding, the values in some of the tables may not equal precisely 100 percent.

Table 1. Demographic Characteristics by College														
	Business Admin.		Education		Humanities and Fine Arts		Natural Sciences		Social and Behavioral Sciences		Unknown		Total	
	N	%	N	%	N	%	N	%	N	%	N	%	N	%
Sex														
Male	259	51.5	124	19.8	105	28.3	137	56.4	129	34.5	5	17.2	759	35.4
Female	244	48.5	502	80.2	266	71.7	106	43.6	245	65.5	24	82.8	1387	64.6
Total	503	100	626	100	371	100	243	100	374	100	29	100	2146	100
Age														
19 or under	1	0.2	2	0.4	2	0.7	1	0.5	1	0.3	1	5.0	8	0.4
20-23	319	77.4	362	66.7	220	73.6	114	57.9	223	71.0	18	90.0	1256	70.4
24-29	72	17.5	96	17.7	56	18.7	52	26.4	55	17.5	1	5.0	332	18.6
30-39	11	2.7	50	9.2	14	4.7	18	9.1	23	7.3	0	0	116	6.5
40-55	9	2.2	27	5.0	6	2.0	11	5.6	12	3.8	0	0	65	3.6
Over 55	0	0	6	1.1	1	0.3	1	0.5	0	0	0	0	8	0.4
Total	412	100	543	100	299	100	197	100	314	100	20	100	1785	100
Race														
Caucasian	459	93.9	572	93.5	322	90.4	215	91.1	327	89.8	26	92.9	1921	92.1
African American	7	1.4	19	3.1	11	3.1	8	3.4	15	4.1	1	3.6	61	2.9
Native American	0	0	2	0.3	2	0.6	0	0	6	1.6	0	0	10	0.5
Asian/ Pac. Island	2	0.4	6	1.0	7	2.0	3	1.3	6	1.6	0	0	24	1.2
Hispanic	10	2.0	8	1.3	10	2.8	2	0.8	8	2.2	0	0	38	1.8
Non-resident Alien	11	2.2	5	0.8	4	1.1	8	3.4	2	0.5	1	3.6	31	1.5
Total	489	100	612	100	356	100	236	100	364	100	28	100	2085	100
Classification														
Unclassified	0	0	0	0	0	0	0	0	0	0	1	3.4	1	0
Freshman	14	2.8	15	2.4	18	4.9	14	5.8	9	2.4	9	31.0	79	3.7
Sophomore	72	14.3	67	10.7	41	11.1	50	20.6	30	8.0	12	41.4	272	12.7
Junior	212	42.1	203	32.4	131	35.3	79	32.5	173	46.3	6	20.7	804	37.5
Senior	196	39.0	193	30.8	131	35.3	85	35.0	140	37.4	1	3.4	746	34.8
Graduate	9	1.8	148	23.6	50	13.5	15	6.2	22	5.9	0	0	244	11.4
Total	503	100	626	100	371	100	243	100	374	100	29	100	2146	100
Residence Status														
Resident	485	96.4	603	96.5	343	92.5	225	92.6	361	96.5	27	93.1	2044	95.3
Non-Resident	18	3.6	22	3.5	28	7.5	18	7.4	13	3.5	2	6.9	101	4.7
Total	503	100	625	100	371	100	243	100	374	100	29	100	2145	100

Results

The subsequent summary tables and charts of responses to the survey questions show the number and the percent responding to each question broken down by college. College designation for some respondents was unavailable; therefore, some percentages reflect this missing data. A summary of data from 2002 to 2006 is also presented. The following list presents some of the key observations of the survey. Certain patterns of response may indicate a need for future examination of these relationships in the university environment. Please note that agreement is presented in terms of individuals who responded either “agree” or “strongly agree” to the survey items.

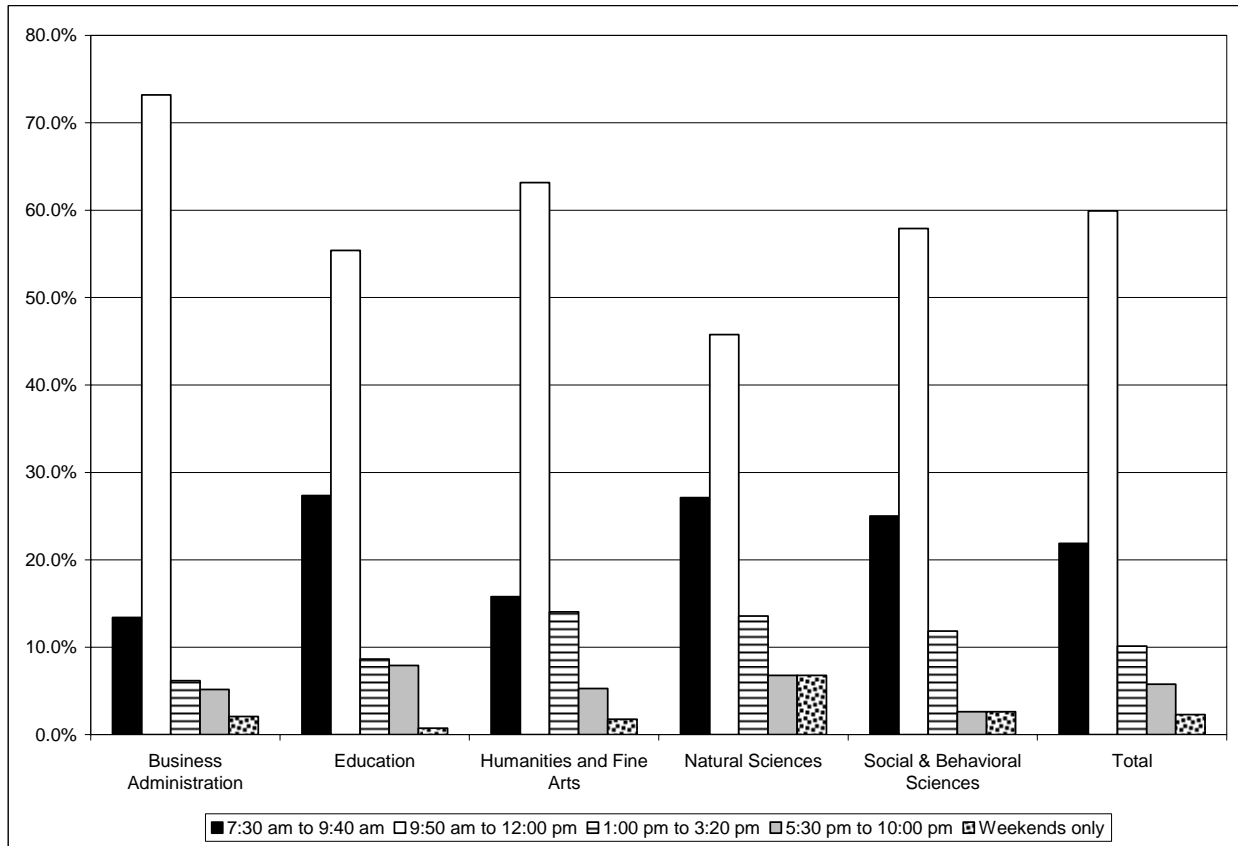
- A large number of students (59.8%) indicated that they prefer summer school courses to be offered between 9:50 AM and 12:00 PM. The majority of the respondents (81.2%) indicated that they prefer to attend summer school classes before noon.
- Just under three-fourths of all respondents (73.0%) indicated that they prefer to take summer school courses during the month of May, while 24.8% prefer June, and only 2.2% prefer to take courses in July.
- Almost three-fourths of respondents (75.6%) indicated that they prefer to have summer school courses offered in 4-week sessions.
- The majority of respondents (76.5%) stated that their primary reason for enrolling in a summer session course was to stay on schedule.
- 40.2% of respondents indicated that financial aid was an important part of their decision to enroll in summer school (16.4% agree and 23.8% strongly agree to this statement).

- Respondents indicated that local employment was somewhat important in their decision to enroll in summer school (48.1%).
- 41.2% of respondents agreed that the courses available in summer school this year met their needs, and 36.7% agreed that the time at which summer school courses are offered this summer met their needs.
- Now that a May session is offered during the summer, 73.8% of respondents have found this session useful (51.2% of respondents found this session very useful and 22.6% of respondents found this session useful).

Summary of Responses

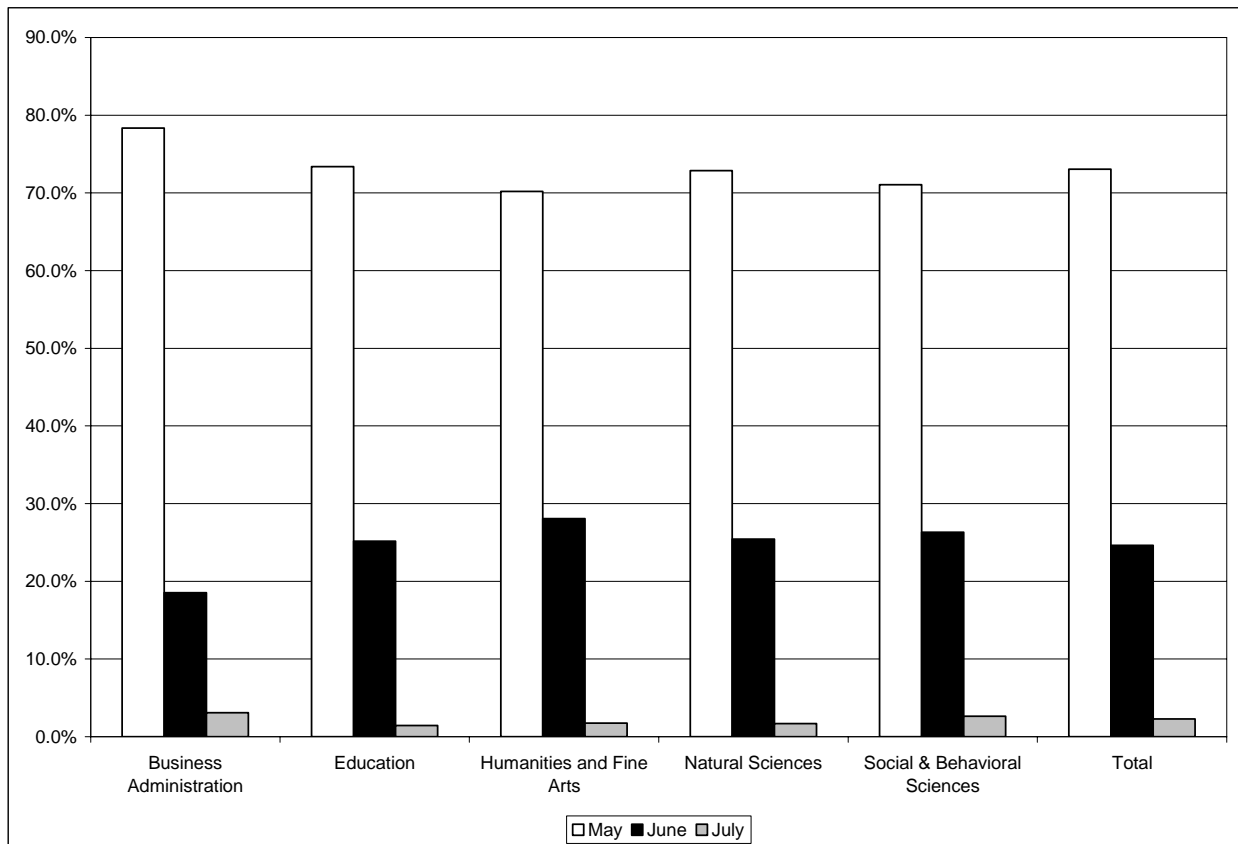
Q1. I prefer summer school courses offered (time of day):

	7:30 am to 9:40 am	9:50 am to 12 pm	1:00 pm to 3:20 pm	5:30 pm to 10:00 pm	Weekends only	Total
Business Administration	13	71	6	5	2	97
%	13.4	73.2	6.2	5.2	2.1	100.0
Education	38	77	12	11	1	139
%	27.3	55.4	8.6	7.9	0.7	100.0
Humanities and Fine Arts	9	36	8	3	1	57
%	15.8	63.2	14.0	5.3	1.8	100.0
Natural Sciences	16	27	8	4	4	59
%	27.1	45.8	13.6	6.8	6.8	100.0
Social & Behavioral Sciences	19	44	9	2	2	76
%	25.0	57.9	11.8	2.6	2.6	100.0
Unknown	0	5	1	0	0	6
%	0.0	83.3	16.7	0.0	0.0	100.0
Total	95	260	44	25	10	434
%	21.9	59.9	10.1	5.8	2.3	100.0



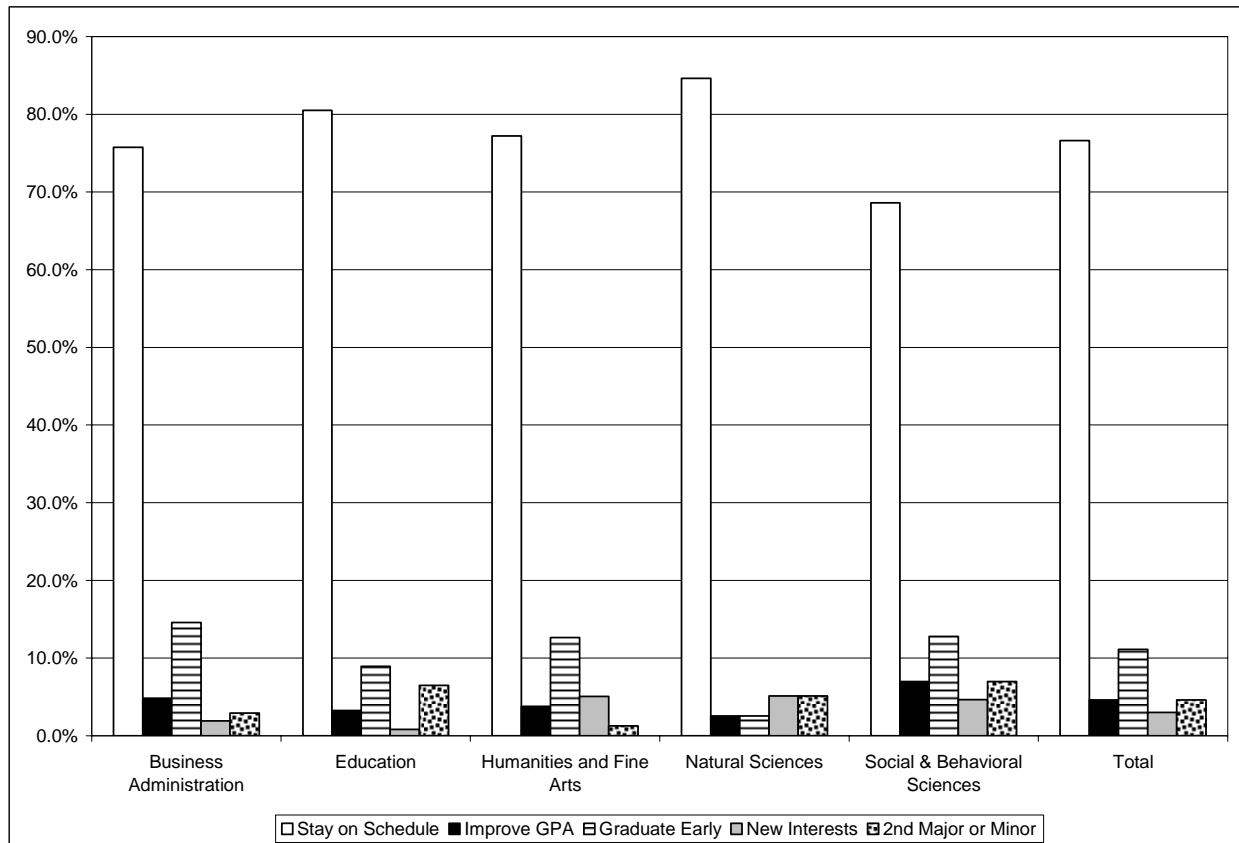
Q2. I prefer summer school courses offered during (month):

	May	June	July	Total
Business Administration	76	18	3	97
%	78.4	18.6	3.1	100.0
Education	102	35	2	139
%	73.4	25.2	1.4	100.0
Humanities and Fine Arts	40	16	1	57
%	70.2	28.1	1.8	100.0
Natural Sciences	43	15	1	59
%	72.9	25.4	1.7	100.0
Social & Behavioral Sciences	54	20	2	76
%	71.1	26.3	2.6	100.0
Unknown	2	3	1	6
%	33.3	50.0	16.7	100.0
Total	317	107	10	434
%	73.0	24.7	2.3	100.0



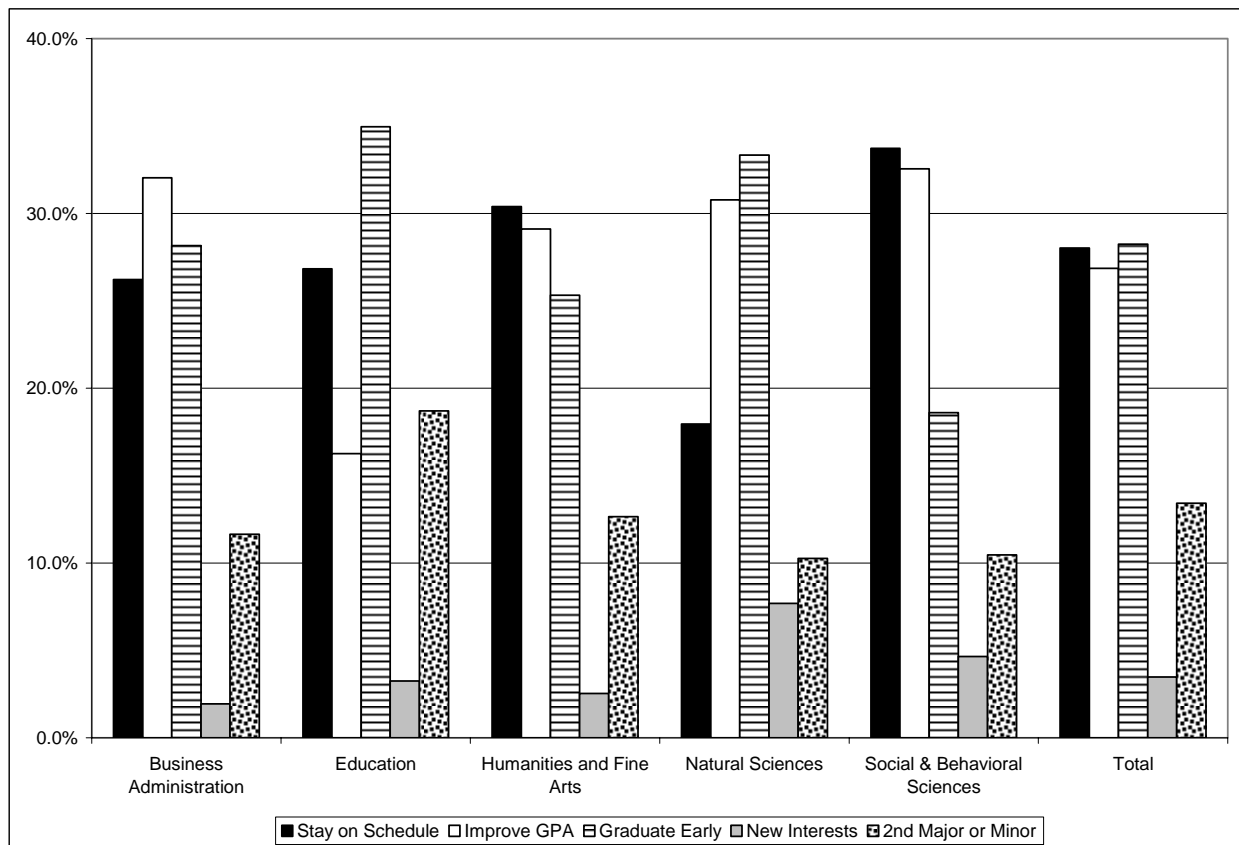
Q3. My primary reason for enrolling in summer school is:

	Stay on schedule	Improve GPA	Graduate early	New interests	2nd major or minor	Total
Business Administration	78	5	15	2	3	103
%	75.7	4.9	14.6	1.9	2.9	100.0
Education	99	4	11	1	8	123
%	80.5	3.3	8.9	0.8	6.5	100.0
Humanities and Fine Arts	61	3	10	4	1	79
%	77.2	3.8	12.7	5.1	1.3	100.0
Natural Sciences	33	1	1	2	2	39
%	84.6	2.6	2.6	5.1	5.1	100.0
Social & Behavioral Sciences	59	6	11	4	6	86
%	68.6	7.0	12.8	4.7	7.0	100.0
Unknown	1	1	0	0	0	2
%	50.0	50.0	0.0	0.0	0.0	100.0
Total	331	20	48	13	20	432
%	76.6	4.6	11.1	3.0	4.6	100.0



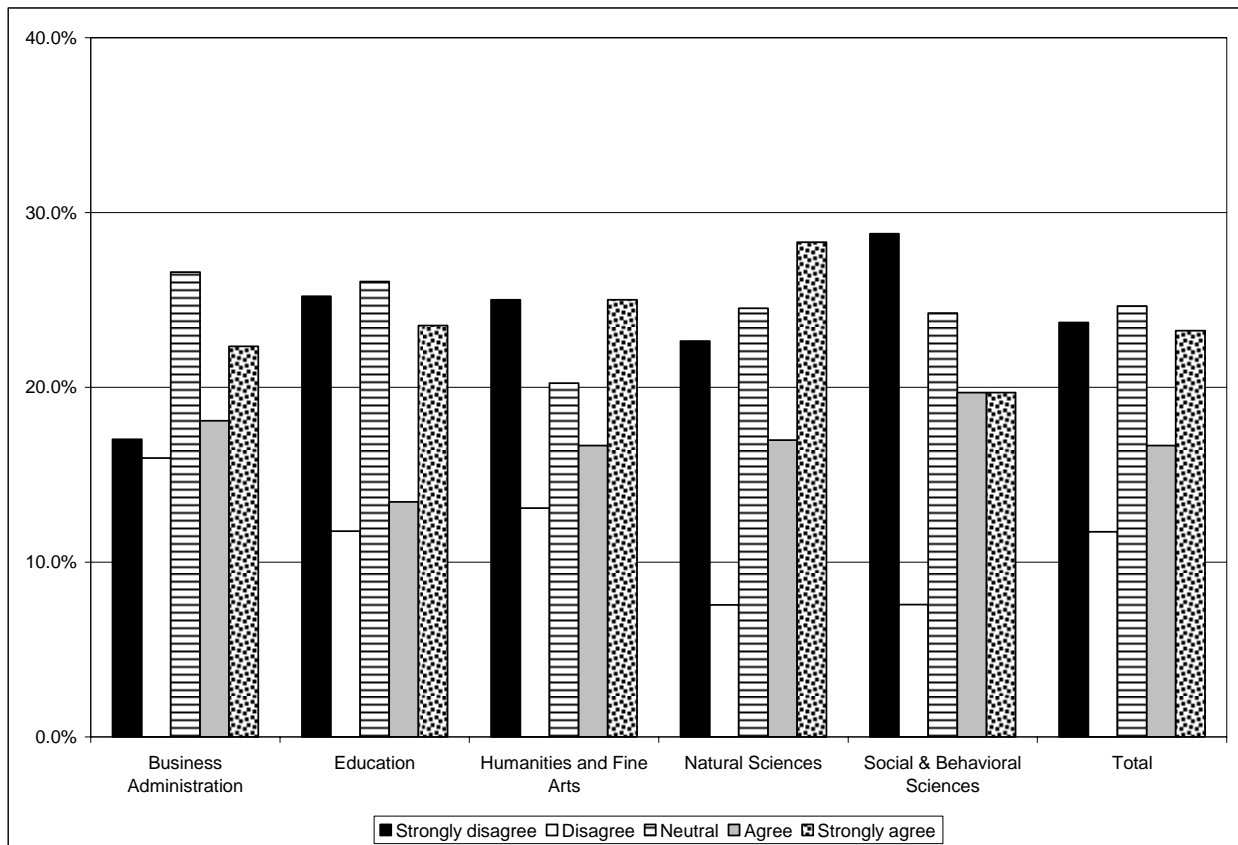
Q4. My secondary reason for enrolling in summer school is:

	Stay on schedule	Improve GPA	Graduate early	New interests	2nd major or minor	Total
Business Administration	27	33	29	2	12	103
%	26.2	32.0	28.2	1.9	11.7	100.0
Education	33	20	43	4	23	123
%	26.8	16.3	35.0	3.3	18.7	100.0
Humanities and Fine Arts	24	23	20	2	10	79
%	30.4	29.1	25.3	2.5	12.7	100.0
Natural Sciences	7	12	13	3	4	39
%	17.9	30.8	33.3	7.7	10.3	100.0
Social & Behavioral Sciences	29	28	16	4	9	86
%	33.7	32.6	18.6	4.7	10.5	100.0
Unknown	1	0	1	0	0	2
%	50.0	0.0	50.0	0.0	0.0	100.0
Total	121	116	122	15	58	432
%	28.0	26.9	28.2	3.5	13.4	100.0



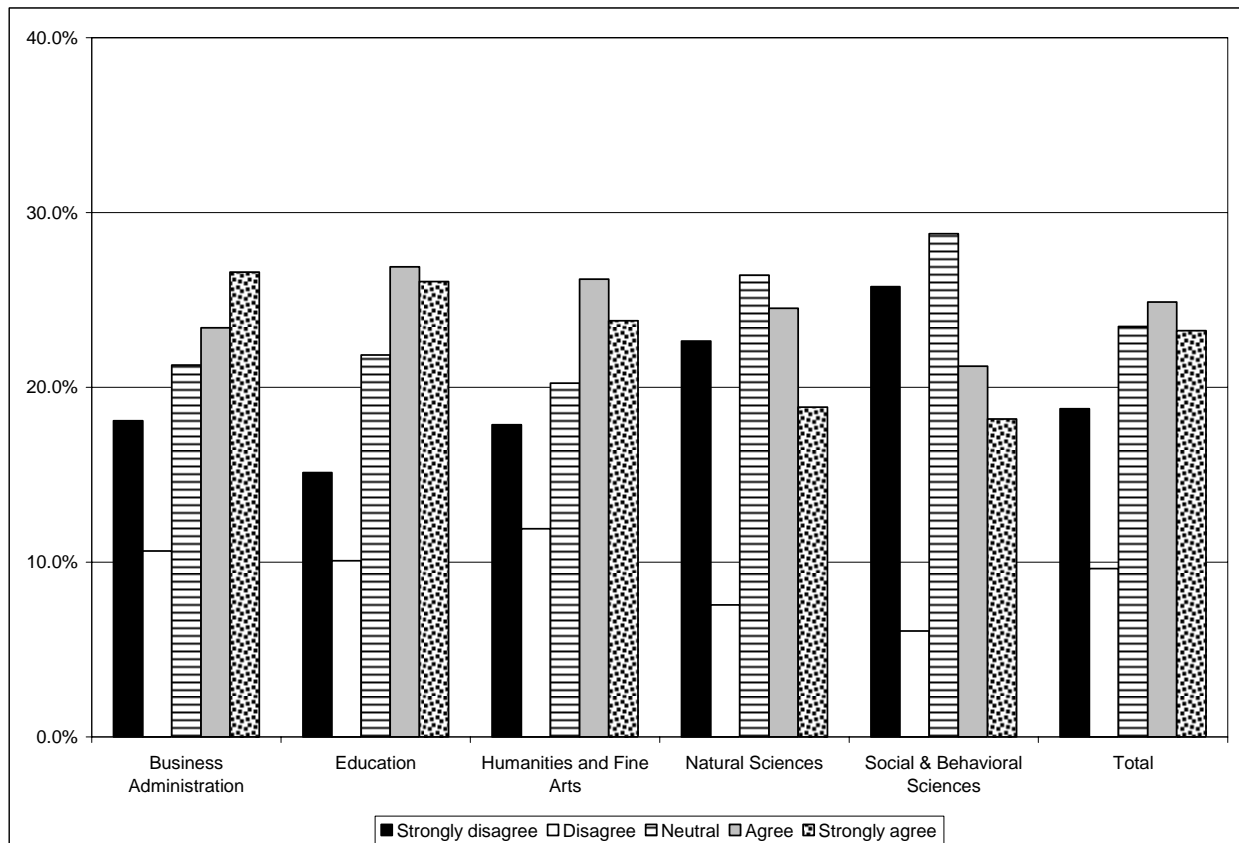
Q5. Financial aid is a very important part of my decision to enroll in summer school.

	Strongly disagree	Disagree	Neutral	Agree	Strongly agree	Total
Business Administration	16	15	25	17	21	94
%	17.0	16.0	26.6	18.1	22.3	100.0
Education	30	14	31	16	28	119
%	25.2	11.8	26.1	13.4	23.5	100.0
Humanities and Fine Arts	21	11	17	14	21	84
%	25.0	13.1	20.2	16.7	25.0	100.0
Natural Sciences	12	4	13	9	15	53
%	22.6	7.5	24.5	17.0	28.3	100.0
Social & Behavioral Sciences	19	5	16	13	13	66
%	28.8	7.6	24.2	19.7	19.7	100.0
Unknown	3	1	3	2	1	10
%	30.0	10.0	30.0	20.0	10.0	100.0
Total	101	50	105	71	99	426
%	23.7	11.7	24.6	16.7	23.2	100.0



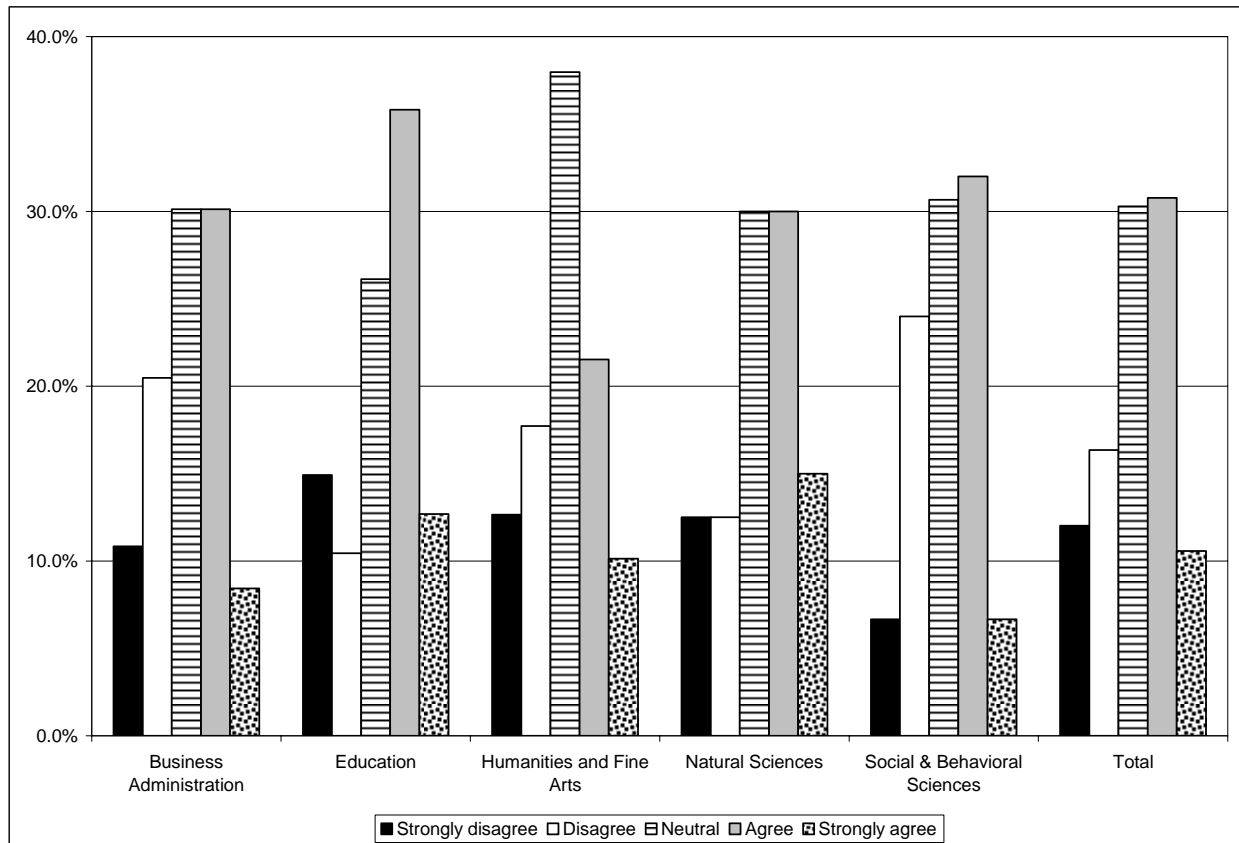
Q6. Local employment is a very important part of my decision to enroll in summer school.

	Strongly disagree	Disagree	Neutral	Agree	Strongly agree	Total
Business Administration	17	10	20	22	25	94
%	18.1	10.6	21.3	23.4	26.6	100.0
Education	18	12	26	32	31	119
%	15.1	10.1	21.8	26.9	26.1	100.0
Humanities and Fine Arts	15	10	17	22	20	84
%	17.9	11.9	20.2	26.2	23.8	100.0
Natural Sciences	12	4	14	13	10	53
%	22.6	7.5	26.4	24.5	18.9	100.0
Social & Behavioral Sciences	17	4	19	14	12	66
%	25.8	6.1	28.8	21.2	18.2	100.0
Unknown	1	1	4	3	1	10
%	10.0	10.0	40.0	30.0	10.0	100.0
Total	80	41	100	106	99	426
%	18.8	9.6	23.5	24.9	23.2	100.0



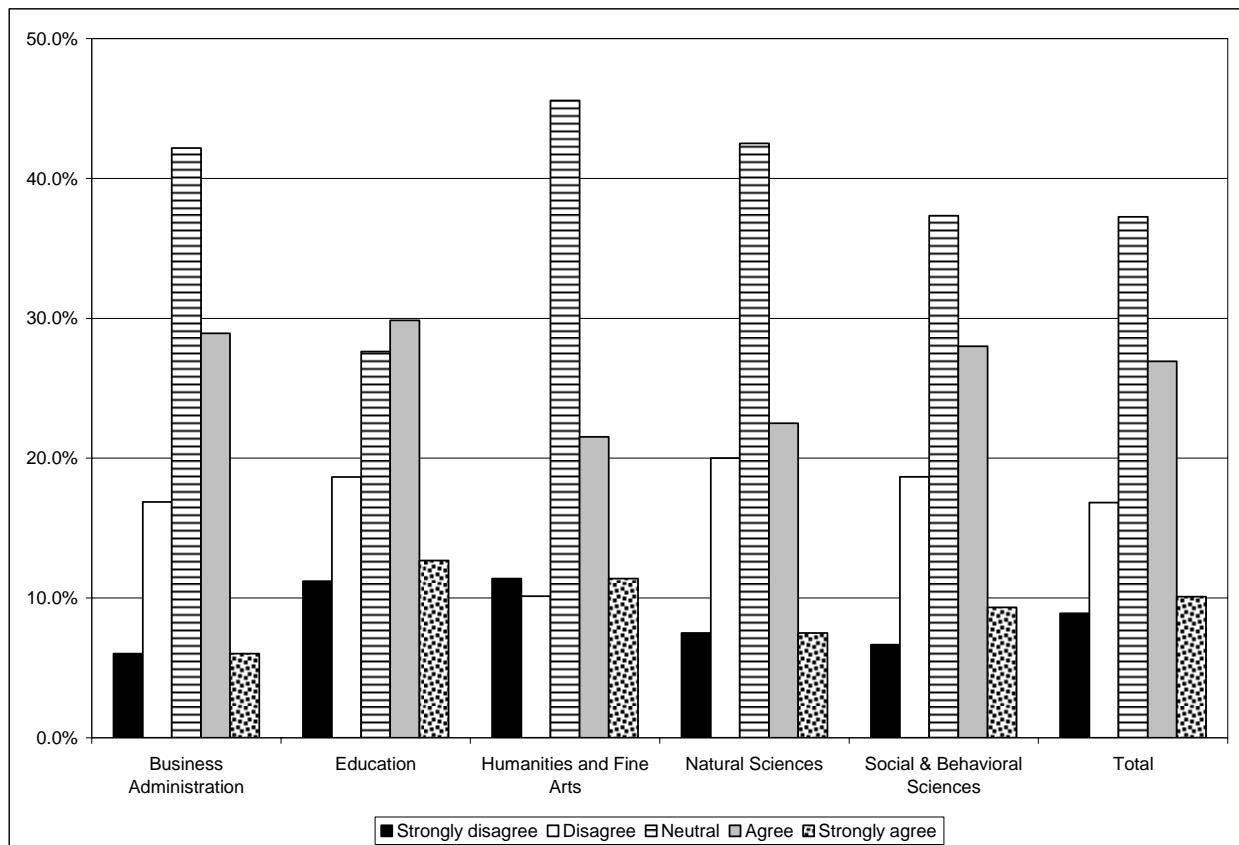
Q7. The courses available in summer school this year meet my needs.

	Strongly disagree	Disagree	Neutral	Agree	Strongly agree	Total
Business Administration	9	17	25	25	7	83
%	10.8	20.5	30.1	30.1	8.4	100.0
Education	20	14	35	48	17	134
%	14.9	10.4	26.1	35.8	12.7	100.0
Humanities and Fine Arts	10	14	30	17	8	79
%	12.7	17.7	38.0	21.5	10.1	100.0
Natural Sciences	5	5	12	12	6	40
%	12.5	12.5	30.0	30.0	15.0	100.0
Social & Behavioral Sciences	5	18	23	24	5	75
%	6.7	24.0	30.7	32.0	6.7	100.0
Unknown	1	0	1	2	1	5
%	20.0	0.0	20.0	40.0	20.0	100.0
Total	50	68	126	128	44	416
%	12.0	16.3	30.3	30.8	10.6	100.0



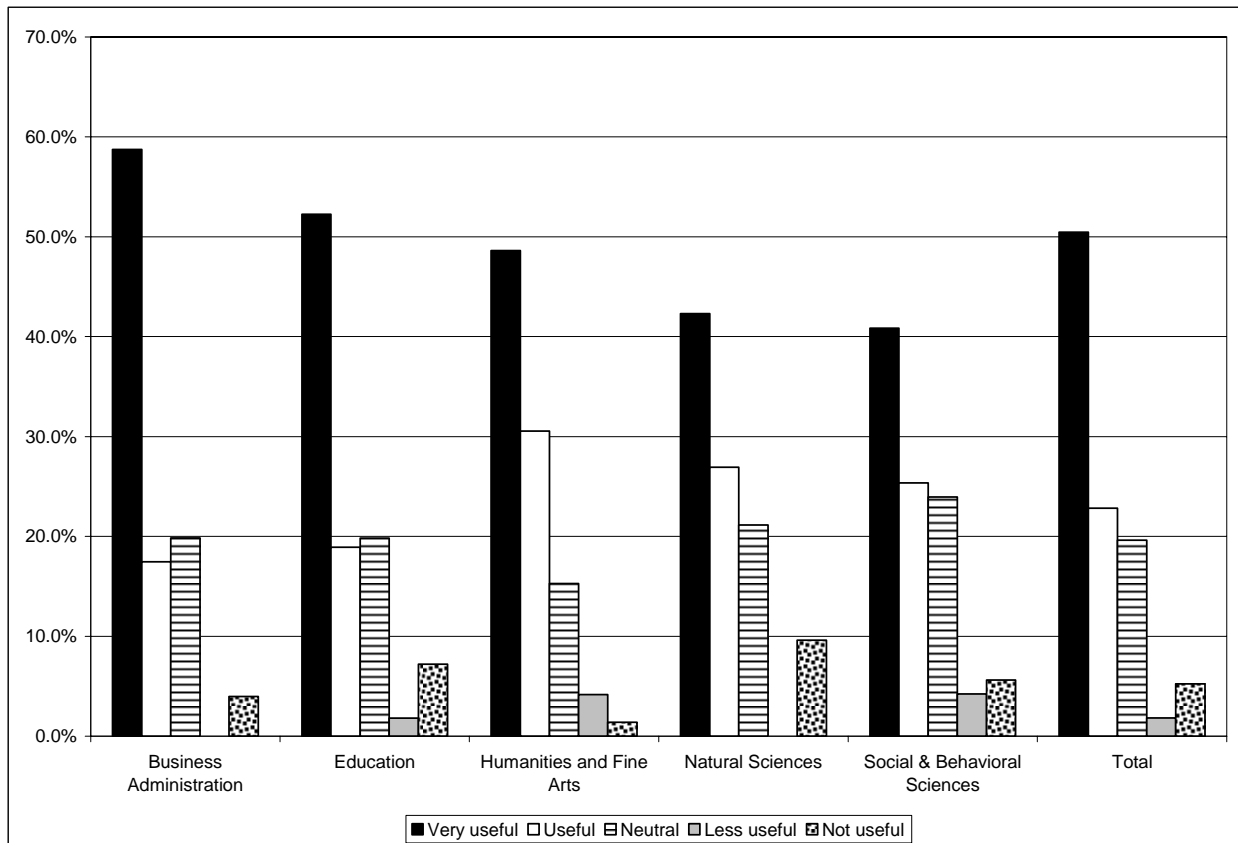
Q8. The time at which courses are offered this summer meets my needs.

	Strongly disagree	Disagree	Neutral	Agree	Strongly agree	Total
Business Administration	5	14	35	24	5	83
%	6.0	16.9	42.2	28.9	6.0	100.0
Education	15	25	37	40	17	134
%	11.2	18.7	27.6	29.9	12.7	100.0
Humanities and Fine Arts	9	8	36	17	9	79
%	11.4	10.1	45.6	21.5	11.4	100.0
Natural Sciences	3	8	17	9	3	40
%	7.5	20.0	42.5	22.5	7.5	100.0
Social & Behavioral Sciences	5	14	28	21	7	75
%	6.7	18.7	37.3	28.0	9.3	100.0
Unknown	0	1	2	1	1	5
%	0.0	20.0	40.0	20.0	20.0	100.0
Total	37	70	155	112	42	416
%	8.9	16.8	37.3	26.9	10.1	100.0



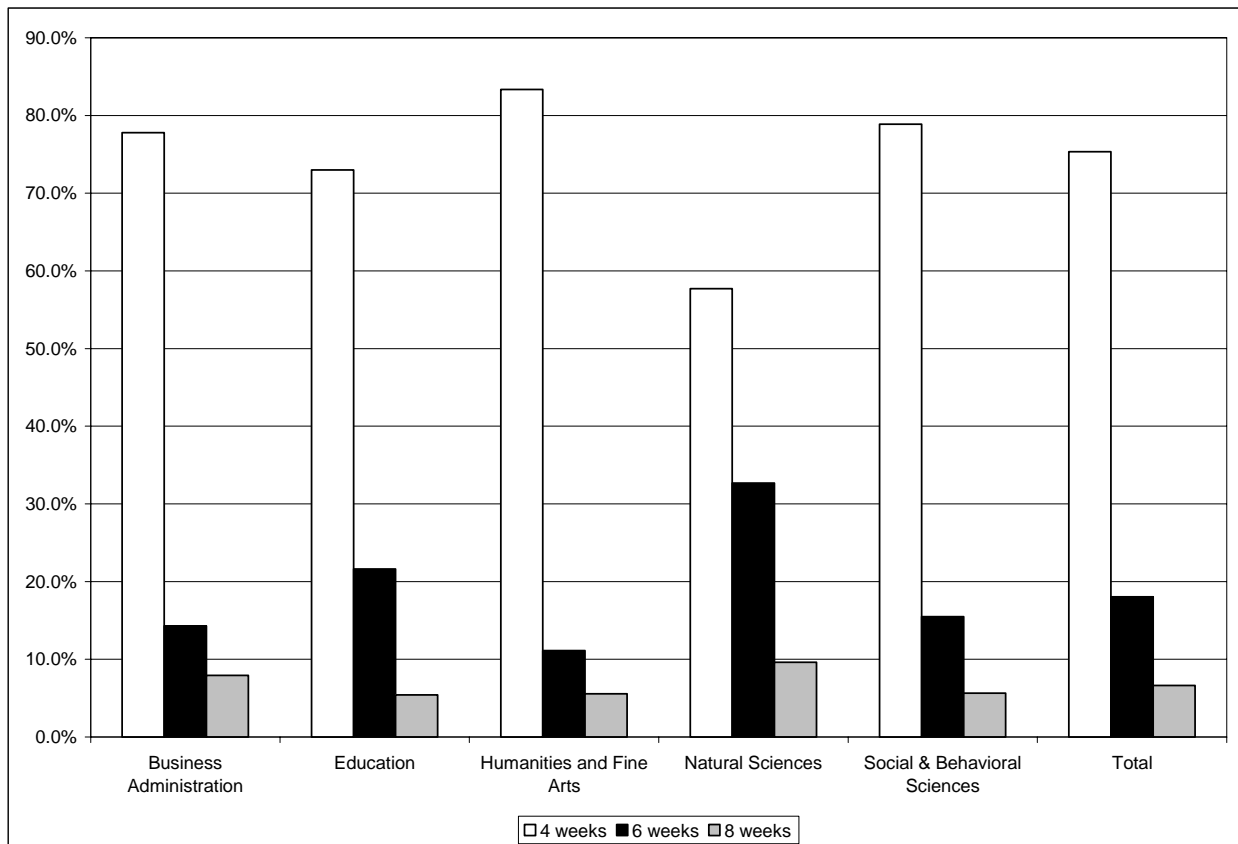
Q9. Now that a new May summer session is offered, how useful is this session for you?

	Very useful	Useful	Neutral	Less useful	Not useful	Total
Business Administration	74	22	25	0	5	126
%	58.7	17.5	19.8	0.0	4.0	100.0
Education	58	21	22	2	8	111
%	52.3	18.9	19.8	1.8	7.2	100.0
Humanities and Fine Arts	35	22	11	3	1	72
%	48.6	30.6	15.3	4.2	1.4	100.0
Natural Sciences	22	14	11	0	5	52
%	42.3	26.9	21.2	0.0	9.6	100.0
Social & Behavioral Sciences	29	18	17	3	4	71
%	40.8	25.4	23.9	4.2	5.6	100.0
Unknown	3	3	0	0	0	6
%	50.0	50.0	0.0	0.0	0.0	100.0
Total	221	100	86	8	23	438
%	50.5	22.8	19.6	1.8	5.3	100.0



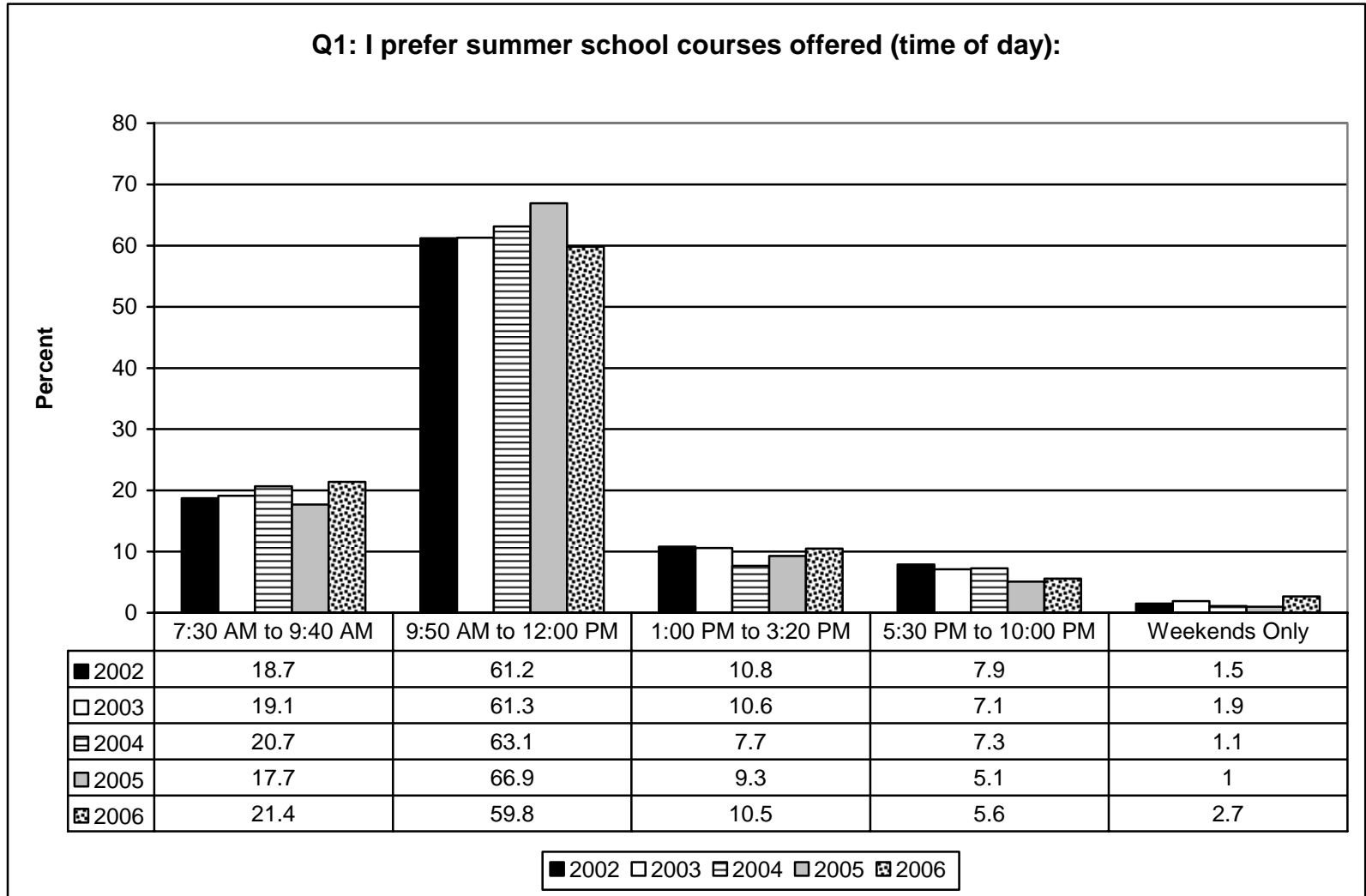
Q10. I prefer summer school courses offered during (length of session):

	4 weeks	6 weeks	8 weeks	Total
Business Administration	98	18	10	126
%	77.8	14.3	7.9	100.0
Education	81	24	6	111
%	73.0	21.6	5.4	100.0
Humanities and Fine Arts	60	8	4	72
%	83.3	11.1	5.6	100.0
Natural Sciences	30	17	5	52
%	57.7	32.7	9.6	100.0
Social & Behavioral Sciences	56	11	4	71
%	78.9	15.5	5.6	100.0
Unknown	5	1	0	6
%	83.3	16.7	0.0	100.0
Total	330	79	29	438
%	75.3	18.0	6.6	100.0

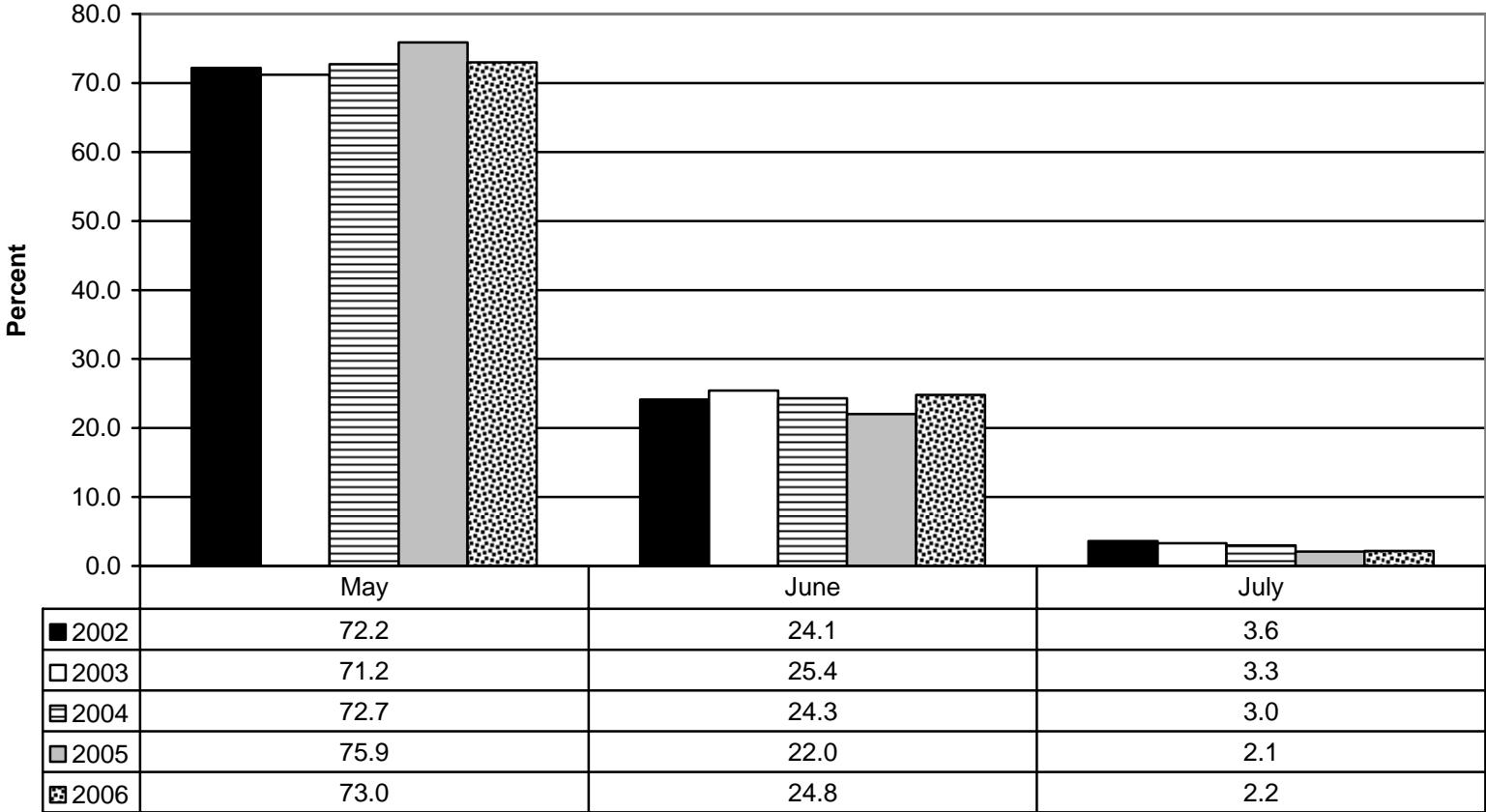


Section II

Multiple Year Comparison of Summer School Data: 2002-2006

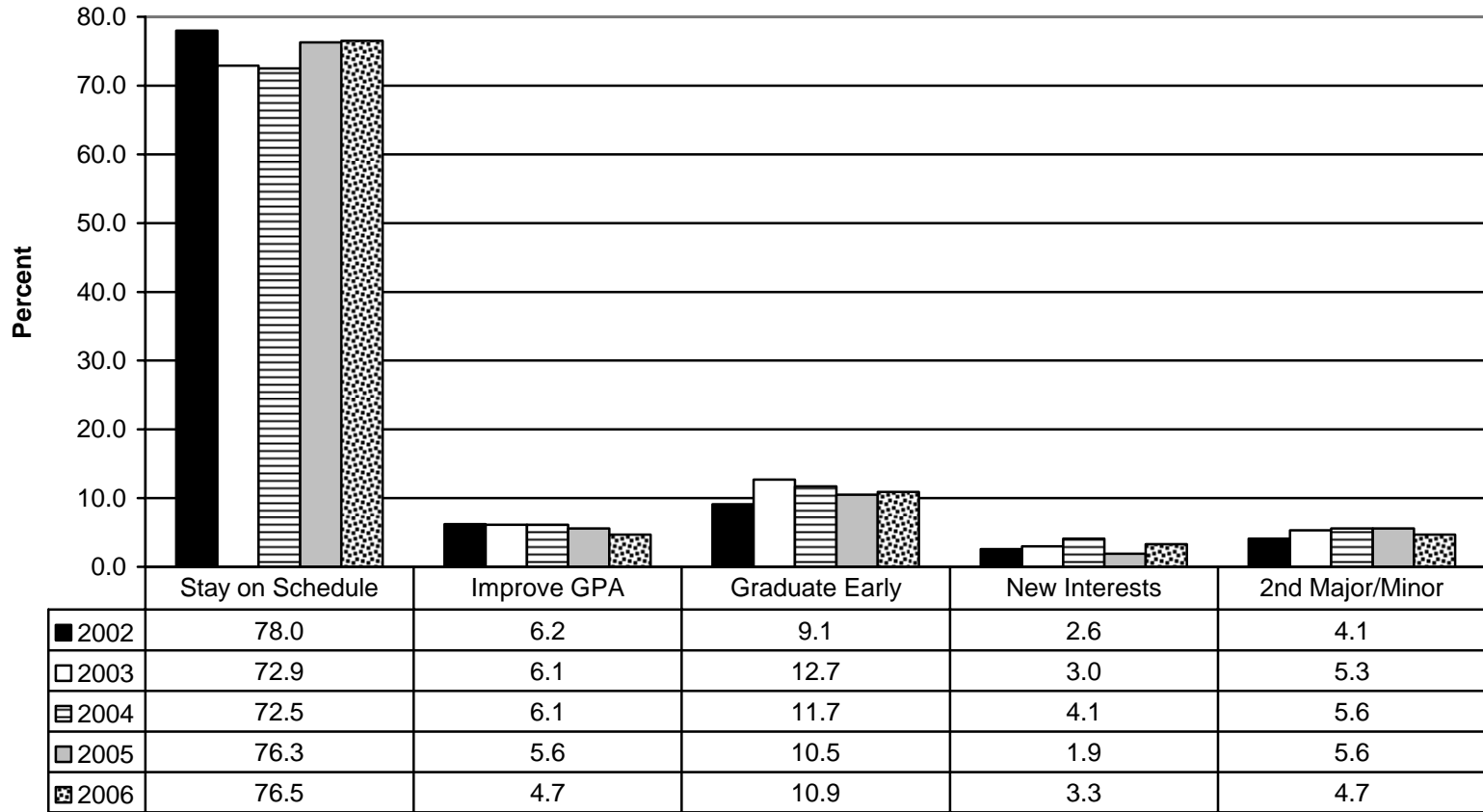


Q2: I prefer summer school courses offered during (month):



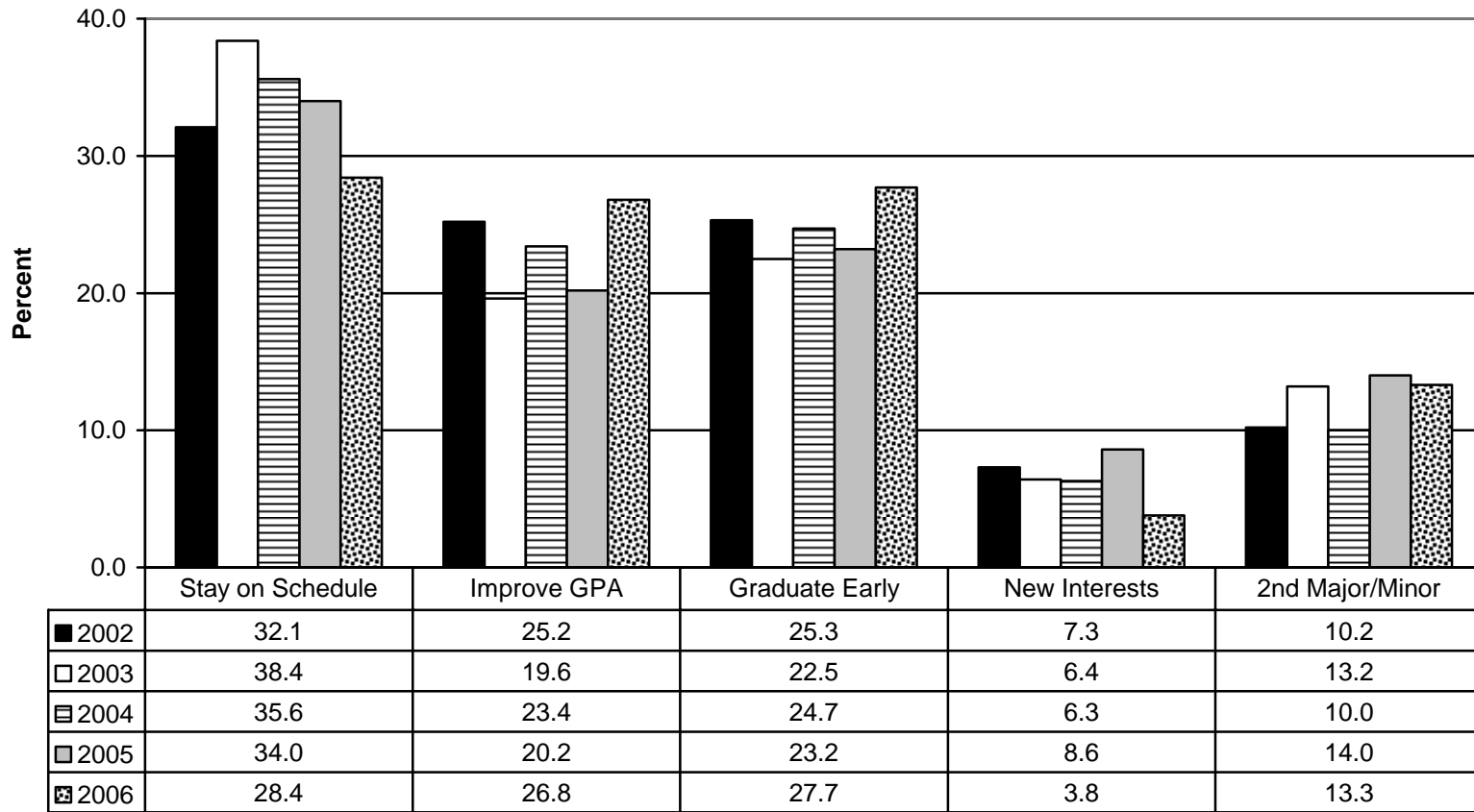
■ 2002 □ 2003 ▨ 2004 ■ 2005 ▨ 2006

Q3: My primary reason for enrolling in summer school is:



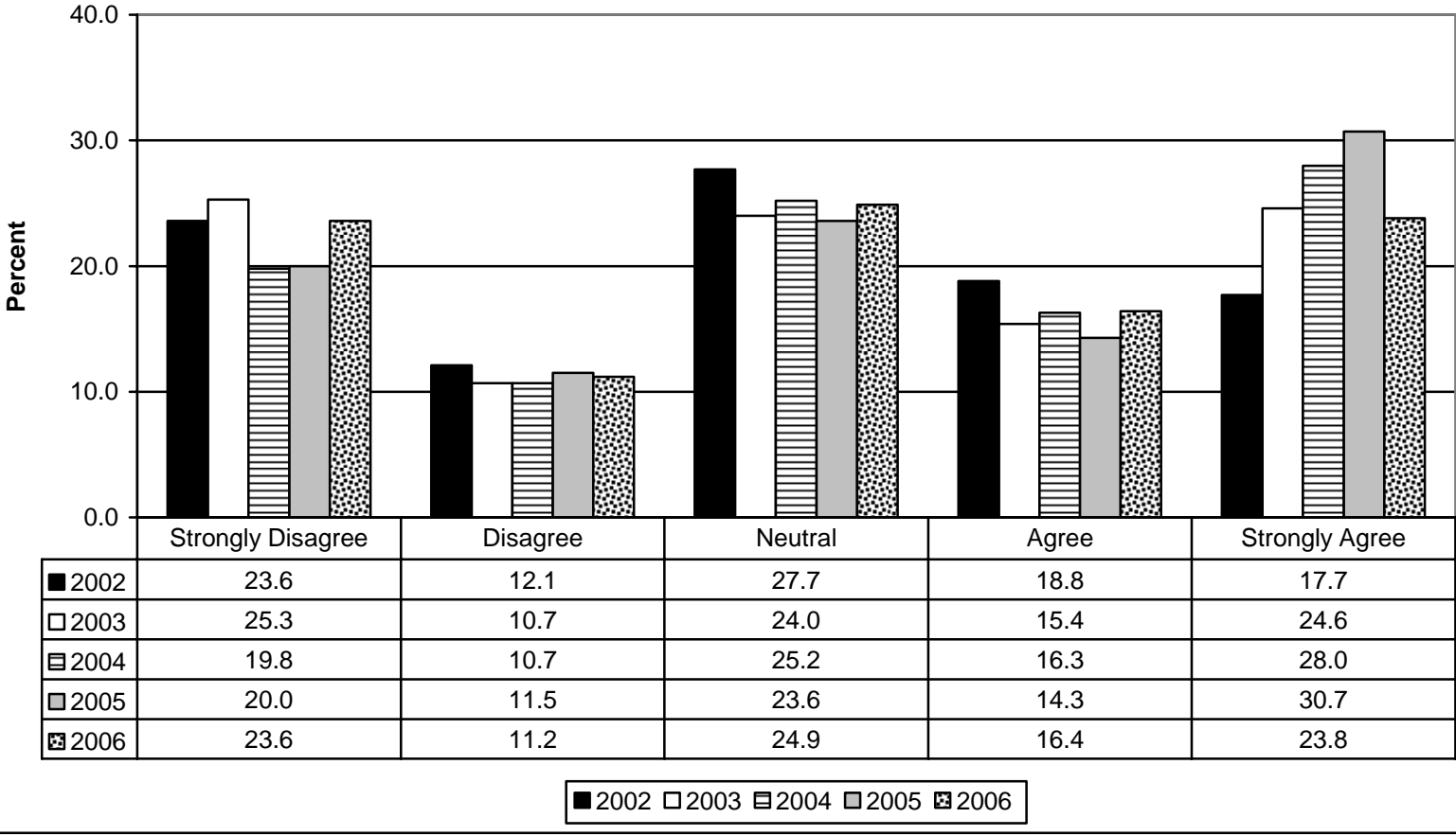
■ 2002 □ 2003 ▨ 2004 ■ 2005 ▨ 2006

Q4: My secondary reason for enrolling in summer school is:

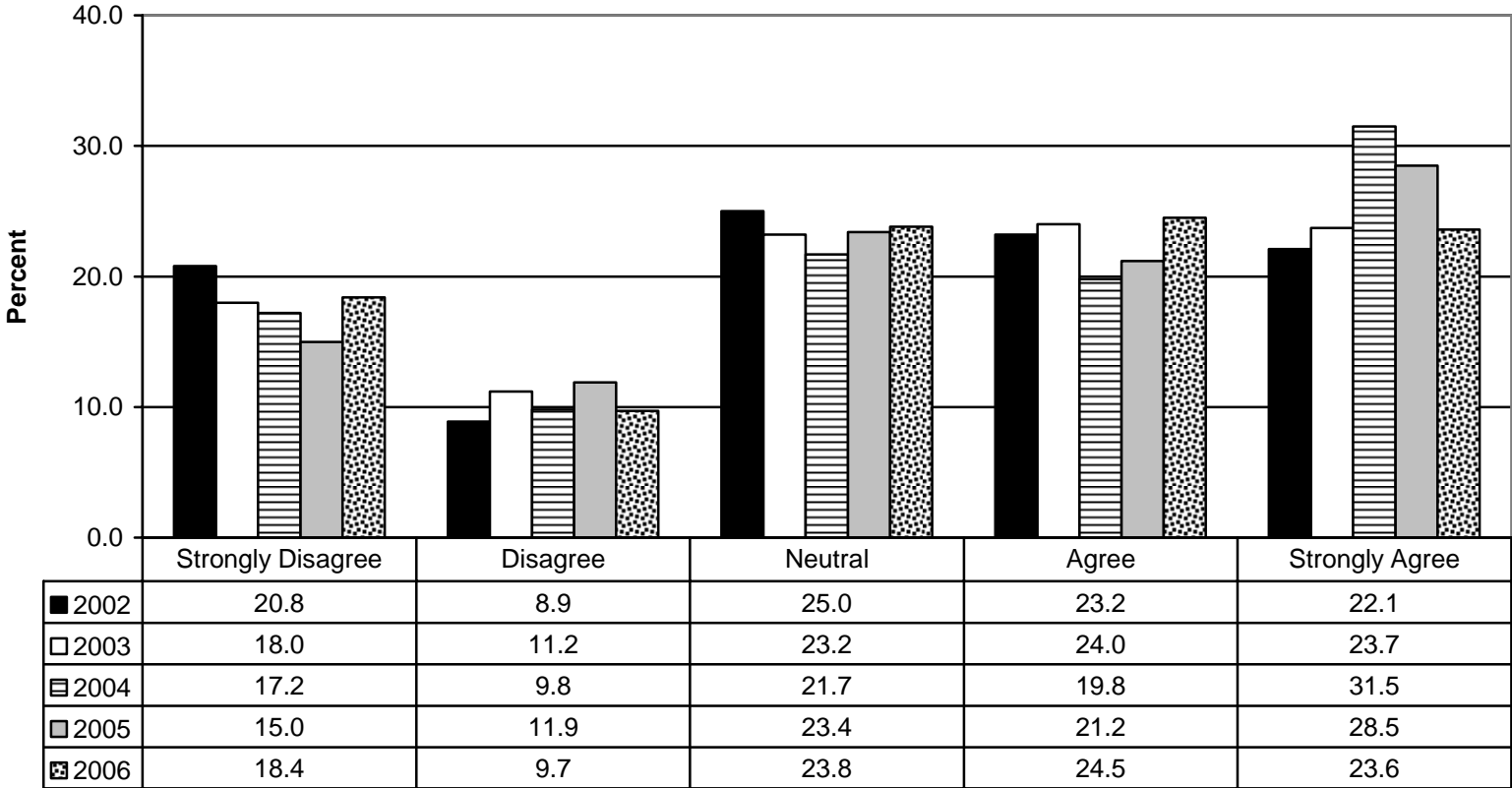


■ 2002 □ 2003 ▨ 2004 ■ 2005 ▨ 2006

Q5: Financial aid is a very important part of my decision to enroll in summer school.

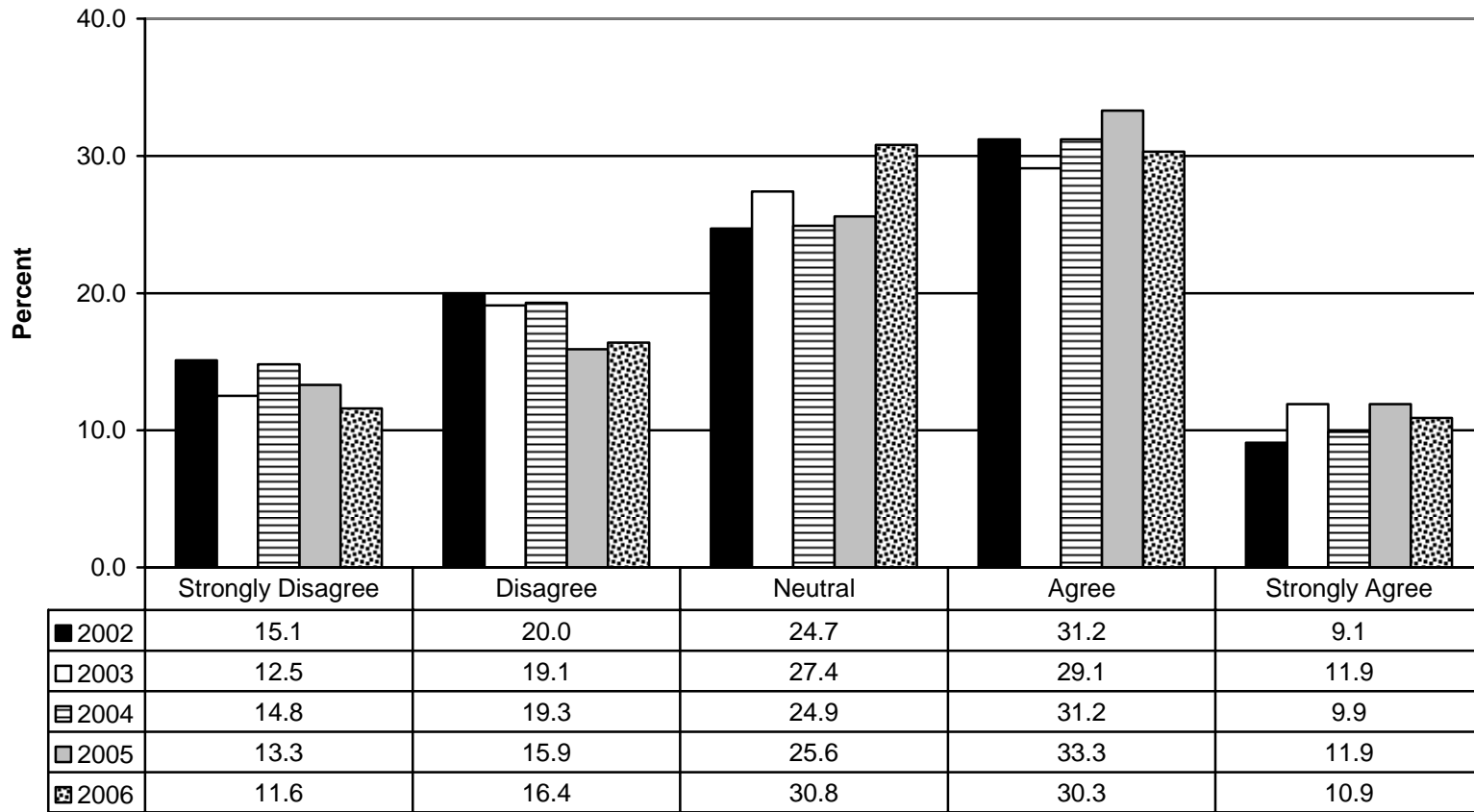


Q6: Local employment is a very important part of my decision to enroll in summer school.



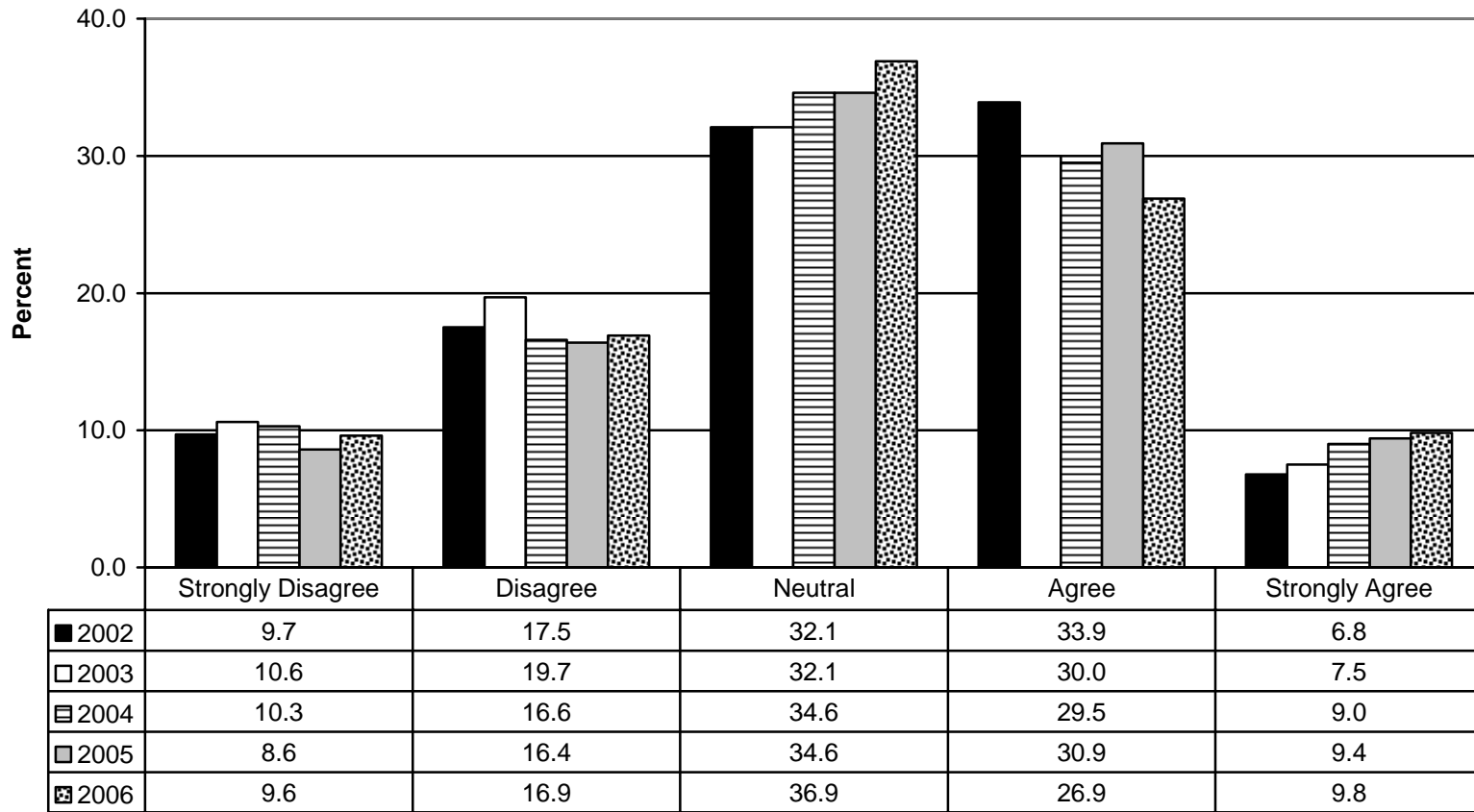
■ 2002 □ 2003 ▨ 2004 ■ 2005 ▨ 2006

Q7: The courses available in summer school this year meet my needs.



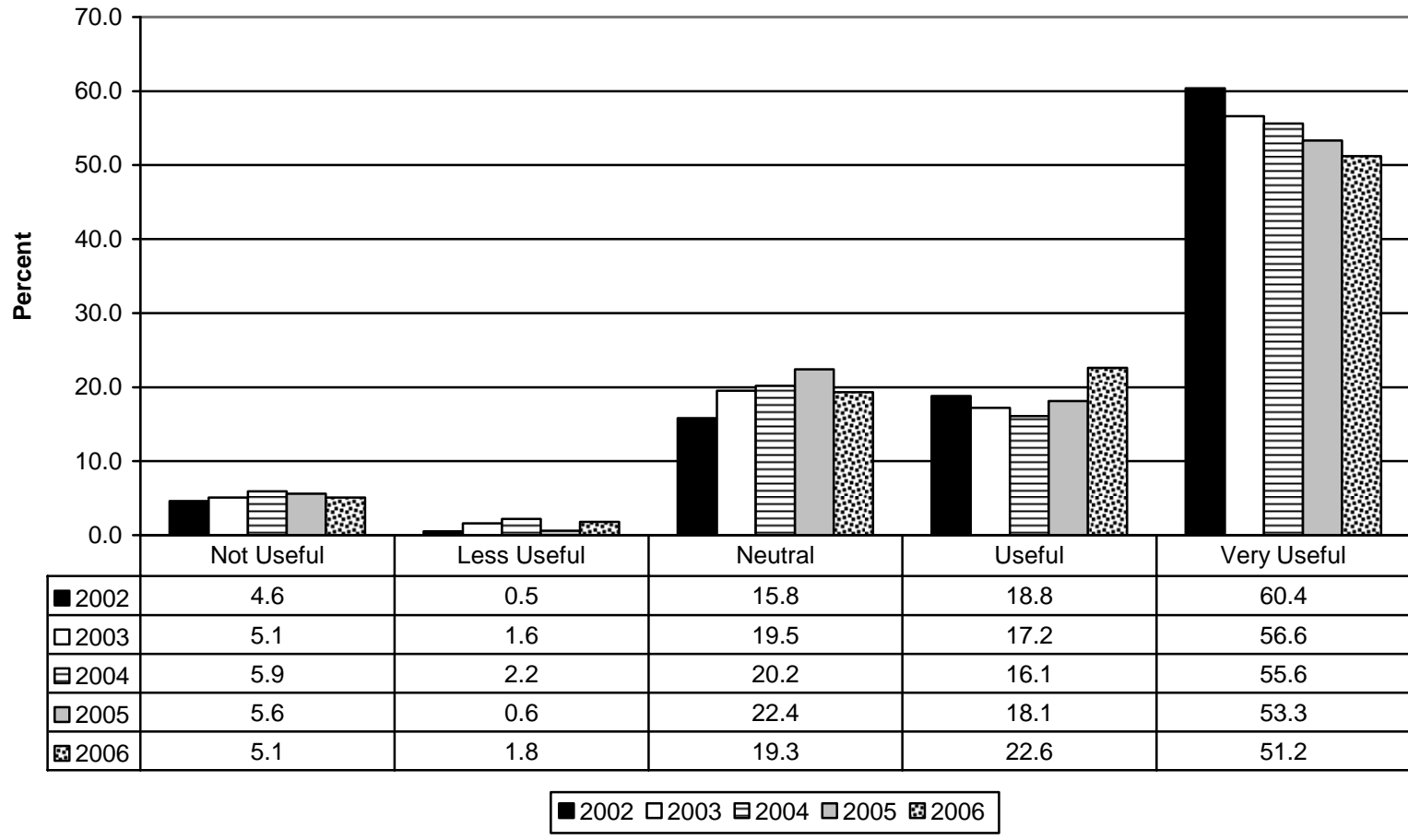
■ 2002 □ 2003 ▨ 2004 ■ 2005 ▩ 2006

Q8: The time at which courses are offered this summer meets my needs.

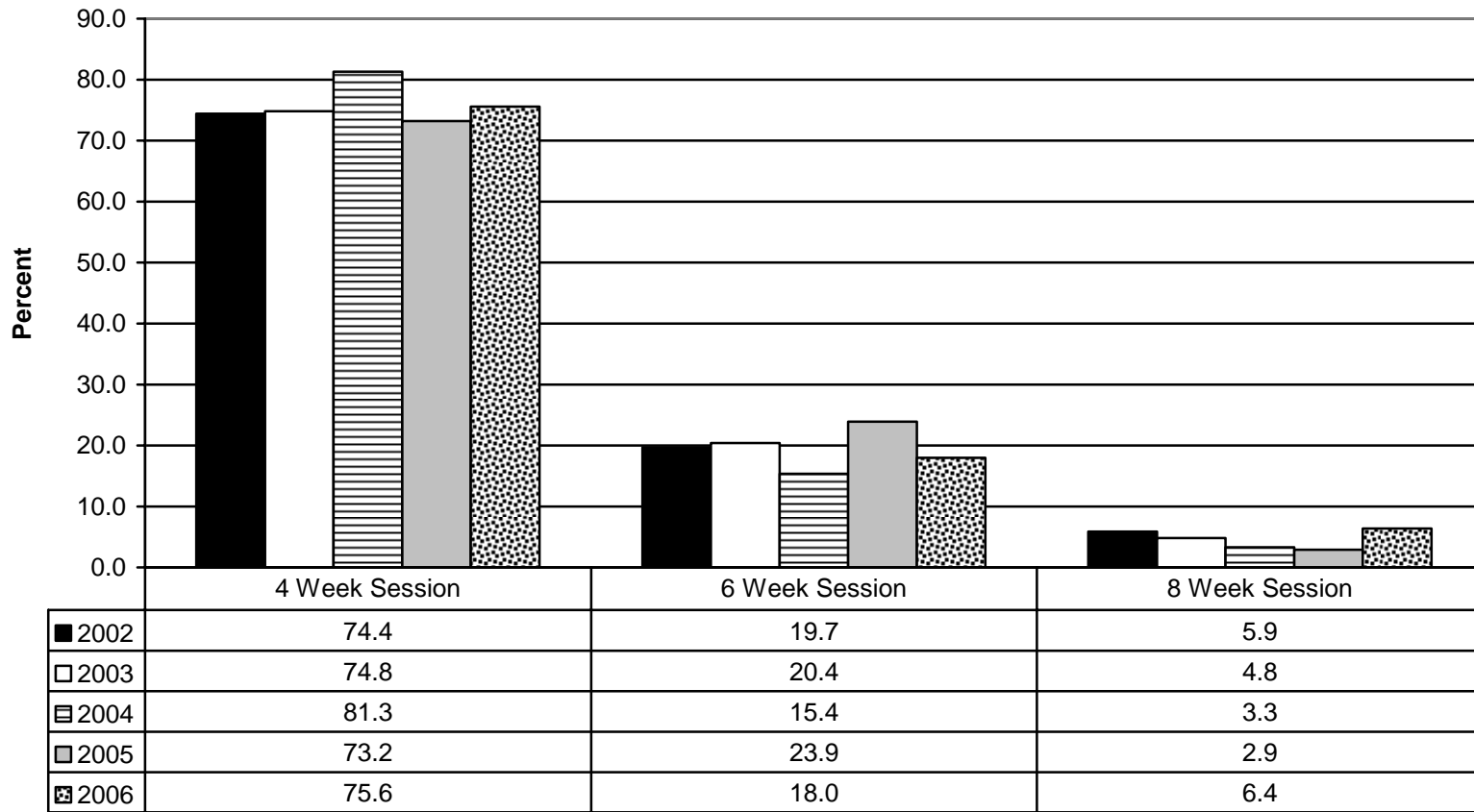


■ 2002 □ 2003 ▨ 2004 ■ 2005 ▨ 2006

Q9: Now that a new May session is offered, how useful is this session for you?



Q10: I prefer summer school courses offered during (length of session):



■ 2002 □ 2003 ▨ 2004 ■ 2005 ▨ 2006