

Summer 2001

UNI Summer School Survey: Conducted During Advanced Registration For Summer School 2001

University of Northern Iowa

Let us know how access to this document benefits you

Copyright ©2001 University of Northern Iowa

Follow this and additional works at: https://scholarworks.uni.edu/ire_documents



Part of the [Higher Education Commons](#)

Recommended Citation

University of Northern Iowa, "UNI Summer School Survey: Conducted During Advanced Registration For Summer School 2001" (2001). *Institutional Research Documents*. 80.

https://scholarworks.uni.edu/ire_documents/80

This Article is brought to you for free and open access by the Institutional Research & Effectiveness at UNI ScholarWorks. It has been accepted for inclusion in Institutional Research Documents by an authorized administrator of UNI ScholarWorks. For more information, please contact scholarworks@uni.edu.

UNI Summer School Survey

**Conducted During Advanced Registration For
Summer School 2001**



**Office of Information Management and Analysis
200 Gilchrist
University of Northern Iowa
Cedar Falls, IA 50614-0004**

June 2001

Table of Contents

	<u>Page</u>
Introduction	1
Methodology	1
Observations	2
Table 1: Demographic Characteristics	1
Table 2: Overall Summary of Responses to Survey	3
Summary of Responses by College	
Q1: I prefer summer school courses offered	7
Q2: I prefer summer school courses offered during	8
Q3: My primary reason for enrolling in summer school is to	9
Q4: My secondary reason for enrolling in summer school is to	10
Q5: Financial aid is a very important part of my decision to enroll in summer school	11
Q6: Local employment is a very important part of my decision to enroll in summer school	12
Q7: The courses available in summer school this year meet my needs	13
Q8: The time at which courses are offered this summer meets my needs	14
Q9: Now that a new May summer session is offered, how useful is this session for you	15
Q10: I prefer summer school courses offered during	16

1. INTRODUCTION

The document presents an analysis of the UNI Summer School Survey given to students participating in advanced registration for Summer School March 5-9, 2001. The survey was completed by 2,869 students who participated in advanced registration. Each participating student was asked to answer two paired, randomly selected, questions. A total of 10 questions were used in the survey. On average, about 574 students answered each question. Items used in the survey focused on student preferences for summer school.

2. METHODOLOGY

A master file containing student demographic data as well as responses to the survey was provided to the Office of Information Management & Analysis (IM&A) by the Office of Information Technology Services (ITS). The data were then analyzed to show patterns of response by college. Demographic information includes gender, race, classification, and transfer status. Table 1 provides a summary of demographic characteristics of the students responding to the survey.

Table 1: Demographic Characteristics

	College													
	Business Administration		Education		Humanities & Fine Arts		Natural Sciences		Social & Behavioral Sciences		General		Total	
	N	%	N	%	N	%	N	%	N	%	N	%	N	%
Gender														
Female	318	50.4	602	81	333	71.9	141	42.3	345	67.9	120	62.8	1859	64.8
Male	313	49.6	141	19	130	28.1	192	57.7	163	32.1	71	37.2	1010	35.2
Total	631	100	743	100	463	100	333	100	508	100	191	100	2869	100
Race														
White	567	93.3	677	93.6	414	93.2	298	92.5	456	92.5	169	92.3	2581	93.1
Black	9	1.5	25	3.5	6	1.4	3	0.9	18	3.7	7	3.8	68	2.5
Alaskan/Am. Indian	1	0	0	0	0	0	2	0.6	2	0.4	0	0	5	0.2
Asian/Pacific Islander	10	1.6	6	0.8	7	1.6	4	1.2	2	0.4	2	1.1	31	1.1
Hispanics	5	0.8	8	1.1	3	0.7	2	0.6	6	1.2	3	1.6	27	1.0
Non-Resident Alien	16	2.6	7	1.0	14	3.2	13	4.0	9	1.8	2	1.1	61	2.2
Total	608	100	723	100	444	100	322	100	493	100	183	100	2773	100
Status														
Freshman	28	4.4	18	2.4	20	4.3	27	8.1	24	4.7	17	8.9	134	4.7
Sophomore	124	19.7	107	14.4	84	18.1	63	18.9	77	15.2	19	9.9	474	16.5
Junior	259	41.0	229	30.8	160	34.6	101	30.3	230	45.3	40	20.8	1019	35.5
Senior	215	34.1	243	32.7	159	34.3	121	36.3	153	30.1	62	32.3	953	33.2
Graduate	5	0.8	146	19.7	40	8.6	21	6.3	24	4.7	22	11.5	258	9.0
Unclassified	0	0	0	0	0	0	0	0	0	0	32	16.7	32	1.1
Total	631	100	743	100	463	100	333	100	508	100	192	100	2870	100
Transfer														
Yes	371	59.1	488	66.1	317	69.5	190	58.5	277	55.1	101	60.5	1744	61.9
No	257	40.9	250	33.9	139	30.5	135	41.5	226	44.9	66	39.5	1073	38.1
Total	628	100	738	100	456	100	325	100	503	100	167	100	2817	100

3. OBSERVATIONS

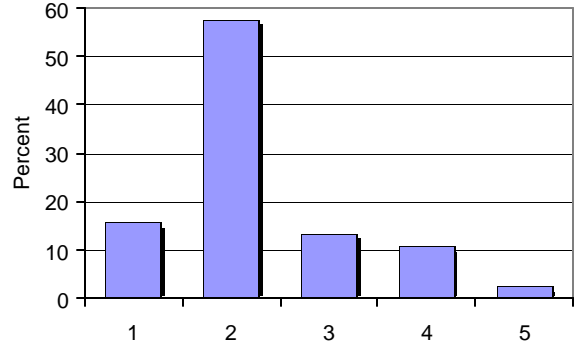
Table 2 provides an overall summary of responses for all of the 10 items in the survey. The following are some of the key observations of the survey:

- A significant majority of students (73.2%) prefer to attend summer school courses between 7:30 AM and 12:00 Noon.
- More than 60 percent of students prefer summer school courses offered in the month of May, while only 2.6 percent prefer it in July. Almost 82 percent of students find it useful to have summer session in May.
- More than 74 percent of the students prefer summer school courses offered during a 4-week period.
- For a majority of students, the primary reason for enrolling in summer school is to stay on schedule (74.8%) followed by to graduate early (12.5%).
- Only about 35 percent of the students agree that financial aid is an important part of their decision to enroll in summer school. Similarly about 48 percent of the students agree that local employment is an important part of their decision to enroll in summer school.
- Only 42 percent of the students agree that the courses available in summer school this year met their needs, while 46 percent agree that the timing of the courses met their needs.

Table 2: Overall Summary of Responses to Survey

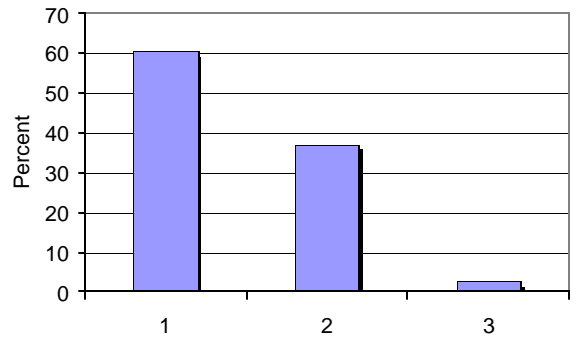
I prefer summer school courses offered:

		Frequency	Percent
1	7:30AM-9:40AM	60	15.6
2	9:50AM-12:00PM	221	57.6
3	1:00PM-3:20PM	52	13.5
4	5:30PM-10:00PM	41	10.7
5	Weekend only	10	2.6
	Total	384	100



I prefer summer school courses offered during:

		Frequency	Percent
1	May	232	60.4
2	June	142	37
3	July	10	2.6
	Total	384	100



My primary reason for enrolling in summer school is to:

		Frequency	Percent
1	Stay on schedule	465	74.8
2	Improve GPA	28	4.5
3	Graduate early	78	12.5
4	New interests	21	3.4
5	Second major/minor	30	4.8
	Total	622	100

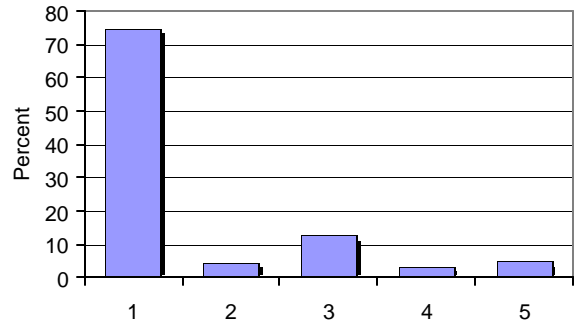
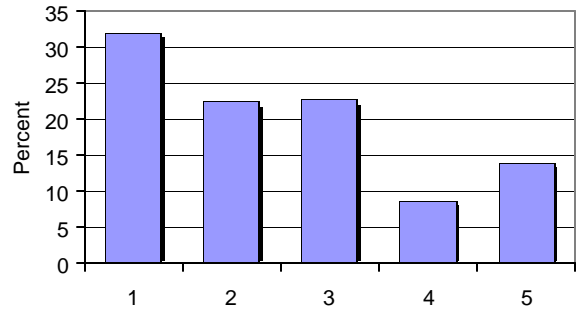


Table 2: Overall Summary of Responses to Survey (Cont'd)

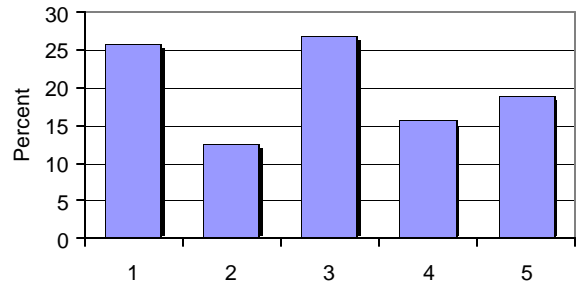
My secondary reason for enrolling in summer school is to:

		Frequency	Percent
1	Stay on schedule	199	32
2	Improve GPA	140	22.5
3	Graduate early	141	22.7
4	New interests	55	8.8
5	Second major/minor	87	14
	Total	622	100



Financial aid is a very important part of my decision to enroll in summer school.

		Frequency	Percent
1	Strongly Disagree	160	25.8
2	Disagree	78	12.6
3	Neutral	167	26.9
4	Agree	97	15.6
5	Strongly Agree	118	19
	Total	620	100



Local employment is a very important part of my decision to enroll in summer school.

		Frequency	Percent
1	Strongly Disagree	122	19.7
2	Disagree	58	9.4
3	Neutral	140	22.6
4	Agree	154	24.8
5	Strongly Agree	146	23.5
	Total	620	100

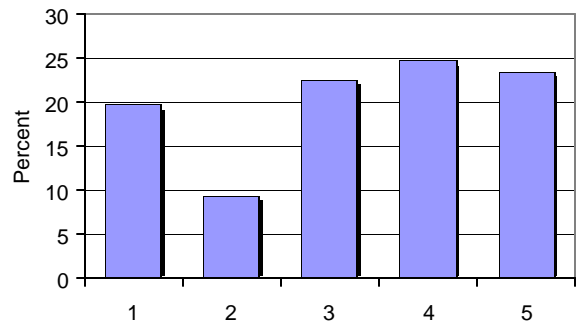
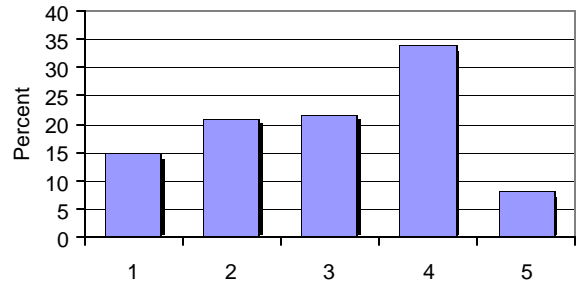


Table 2: Overall Summary of Responses to Survey (Cont'd)

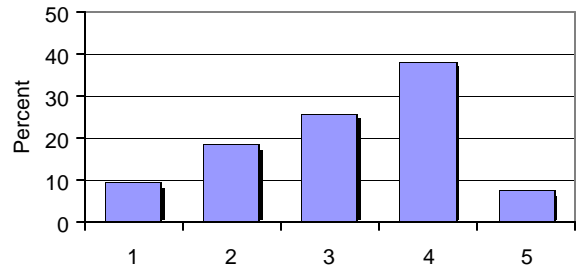
The courses available in summer school this year meet my needs.

		Frequency	Percent
1	Strongly Disagree	93	14.9
2	Disagree	131	21
3	Neutral	136	21.8
4	Agree	212	34
5	Strongly Agree	51	8.2
	Total	623	100



The time at which courses are offered this summer meets my needs.

		Frequency	Percent
1	Strongly Disagree	60	9.6
2	Disagree	116	18.6
3	Neutral	161	25.8
4	Agree	238	38.2
5	Strongly Agree	48	7.7
	Total	623	100



Now that a new May summer session is offered, how useful is this session for you?

		Frequency	Percent
1	Very useful	395	63.7
2	Useful	111	17.9
3	Neutral	75	12.1
4	Less useful	2	0.3
5	Not useful	37	6
	Total	620	100

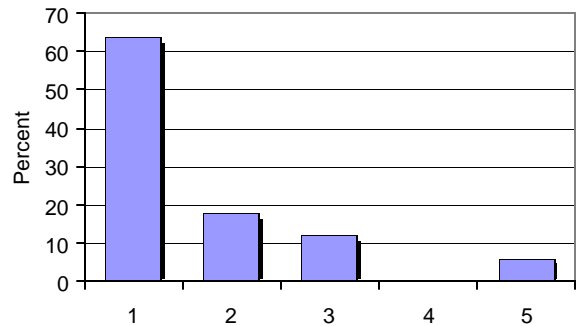
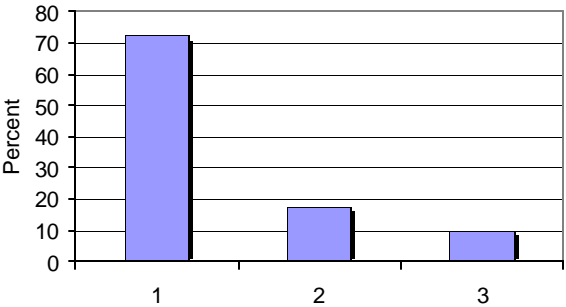


Table 2: Overall Summary of Responses to Survey (Cont'd)

I prefer summer school courses offered during:

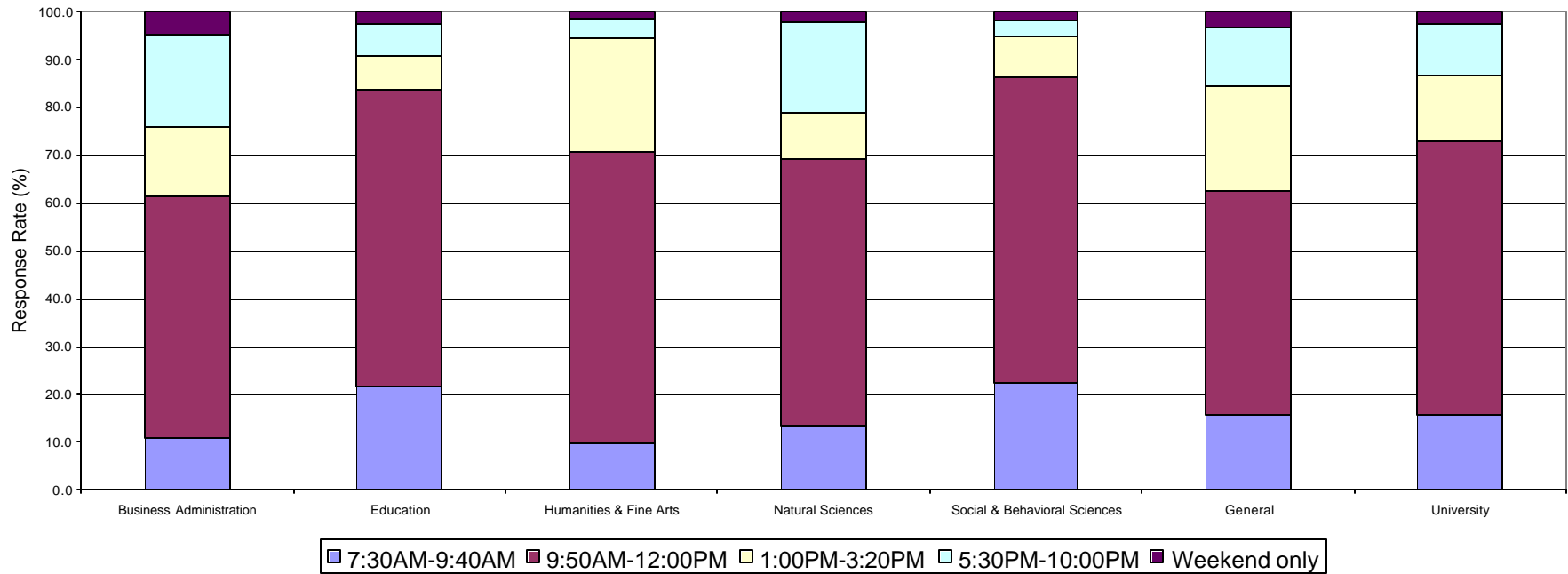
		Frequency	Percent
1	4 weeks	449	72.4
2	6 weeks	109	17.6
3	8 weeks	62	10
	Total	620	100



Summary of Responses by College

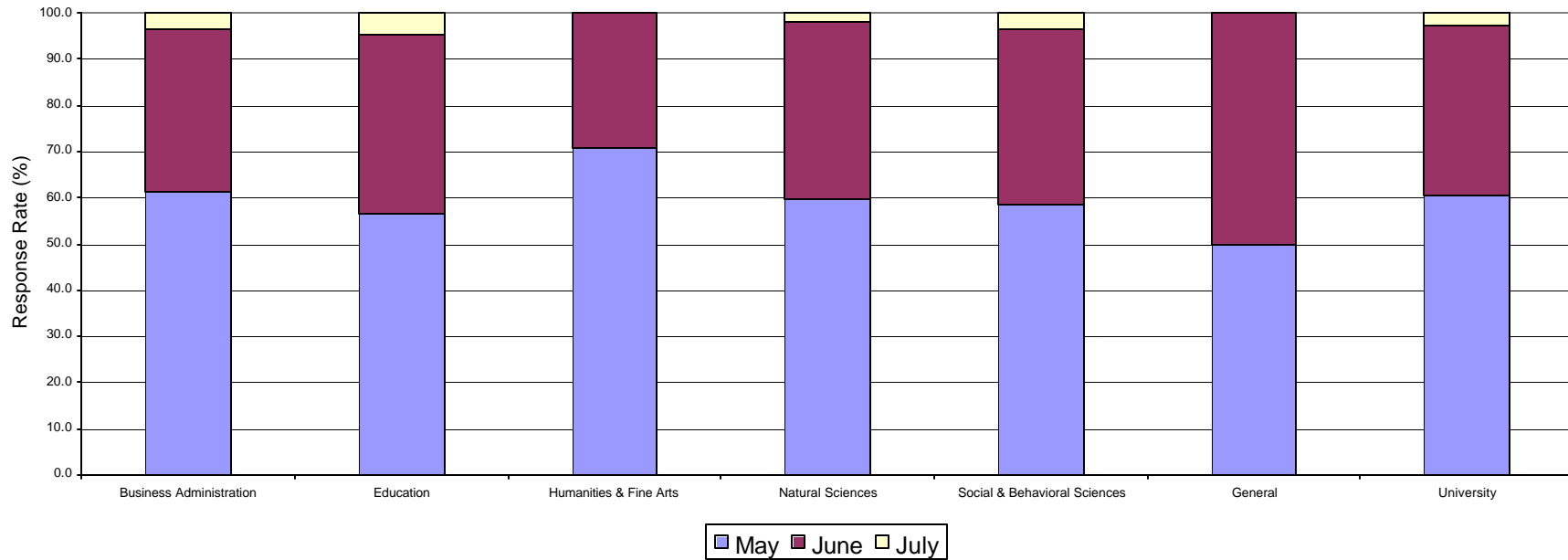
1. I prefer summer school courses offered:

	7:30AM-9:40AM		9:50AM-12:00PM		1:00PM-3:20PM		5:30PM-10:00PM		Weekend only		Total	
	Count	Row %	Count	Row %	Count	Row %	Count	Row %	Count	Row %	Count	Row %
College of Business Administration	9	10.8	42	50.6	12	14.5	16	19.3	4	4.8	83	100
College of Education	19	21.8	54	62.1	6	6.9	6	6.9	2	2.3	87	100
College of Humanities & Fine Arts	7	9.7	44	61.1	17	23.6	3	4.2	1	1.4	72	100
College of Natural Sciences	7	13.5	29	55.8	5	9.6	10	19.2	1	1.9	52	100
College of Social & Behavioral Sciences	13	22.4	37	63.8	5	8.6	2	3.4	1	1.7	58	100
General	5	15.6	15	46.9	7	21.9	4	12.5	1	3.1	32	100
University	60	15.6	221	57.6	52	13.5	41	10.7	10	2.6	384	100



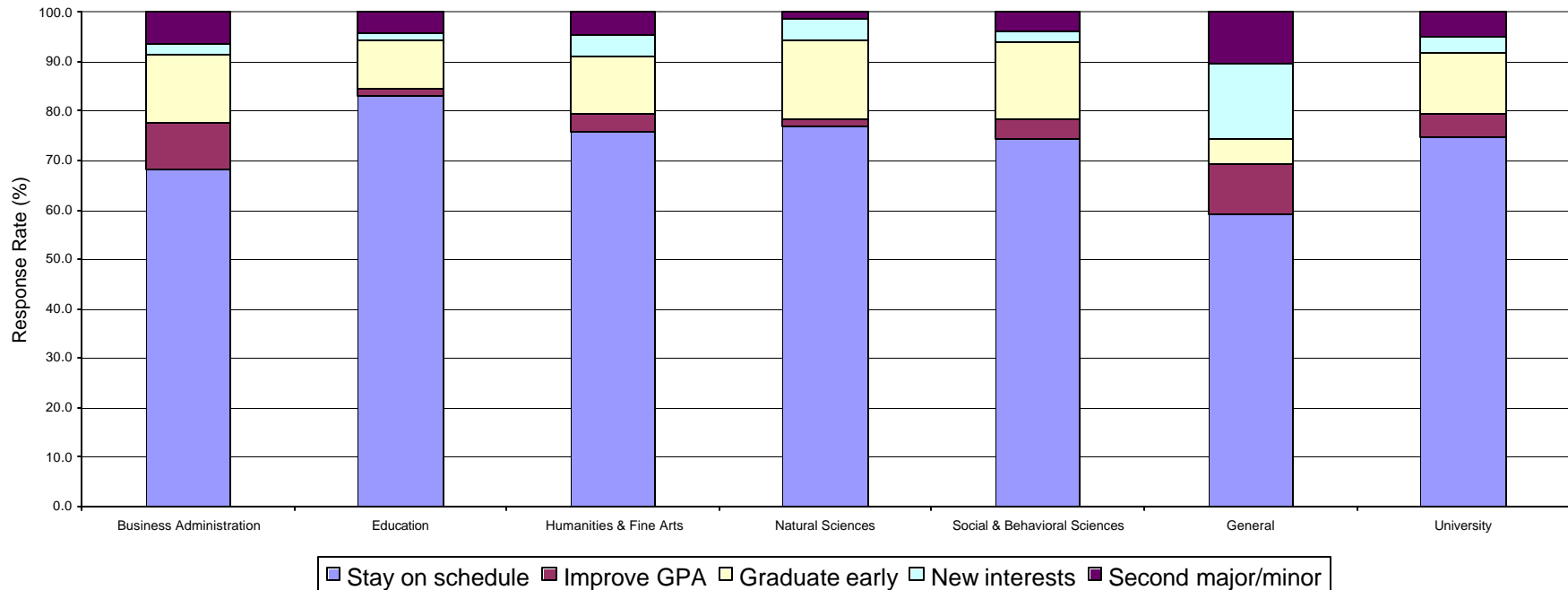
2. I prefer summer school courses offered during:

	May		June		July		Total	
	Count	Row %	Count	Row %	Count	Row %	Count	Row %
College of Business Administration	51	61.4	29	34.9	3	3.6	83	100
College of Education	49	56.3	34	39.1	4	4.6	87	100
College of Humanities & Fine Arts	51	70.8	21	29.2	0	0	72	100
College of Natural Sciences	31	59.6	20	38.5	1	1.9	52	100
College of Social & Behavioral Sciences	34	58.6	22	37.9	2	3.4	58	100
General	16	50	16	50	0	0	32	100
University	232	60.4	142	37	10	2.6	384	100



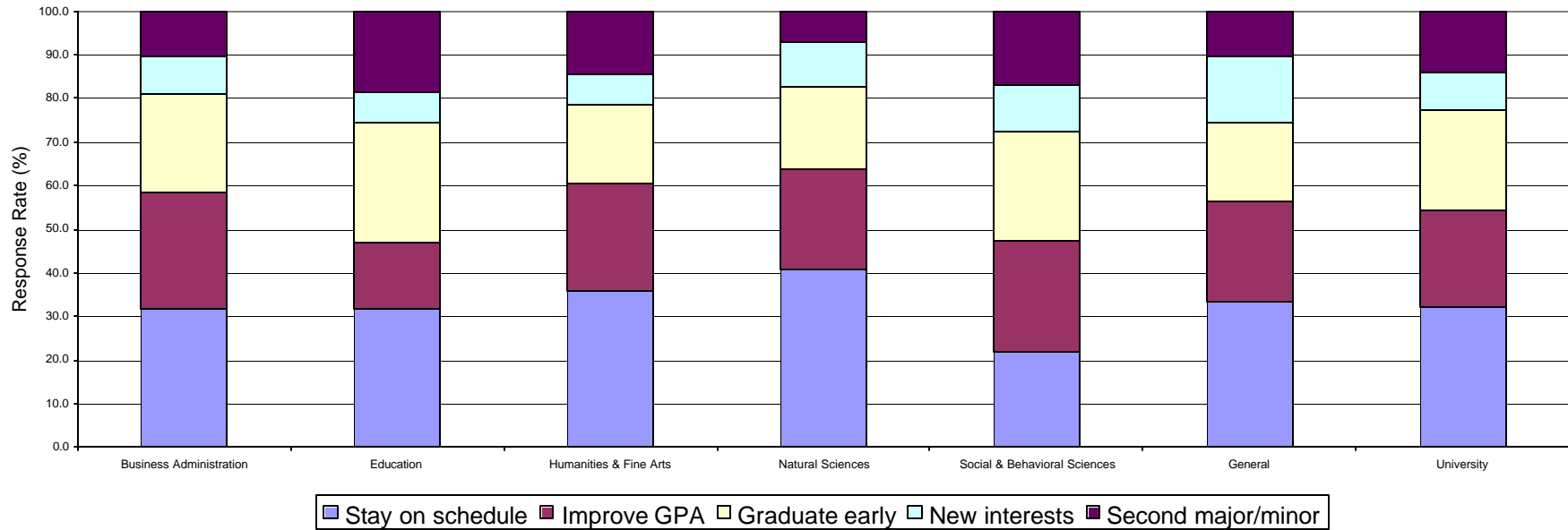
3. My primary reason for enrolling in summer school is to:

	Stay on schedule		Improve GPA		Graduate early		New interests		Second major/minor		Total	
	Count	Row %	Count	Row %	Count	Row %	Count	Row %	Count	Row %	Count	Row %
College of Business Administration	97	68.3	13	9.2	20	14.1	3	2.1	9	6.3	142	100
College of Education	133	83.1	2	1.3	16	10	2	1.3	7	4.4	160	100
College of Humanities & Fine Arts	84	75.7	4	3.6	13	11.7	5	4.5	5	4.5	111	100
College of Natural Sciences	53	76.8	1	1.4	11	15.9	3	4.3	1	1.4	69	100
College of Social & Behavioral Sciences	75	74.3	4	4	16	15.8	2	2	4	4	101	100
General	23	59	4	10.3	2	5.1	6	15.4	4	10.3	39	100
University	465	74.8	28	4.5	78	12.5	21	3.4	30	4.8	622	100



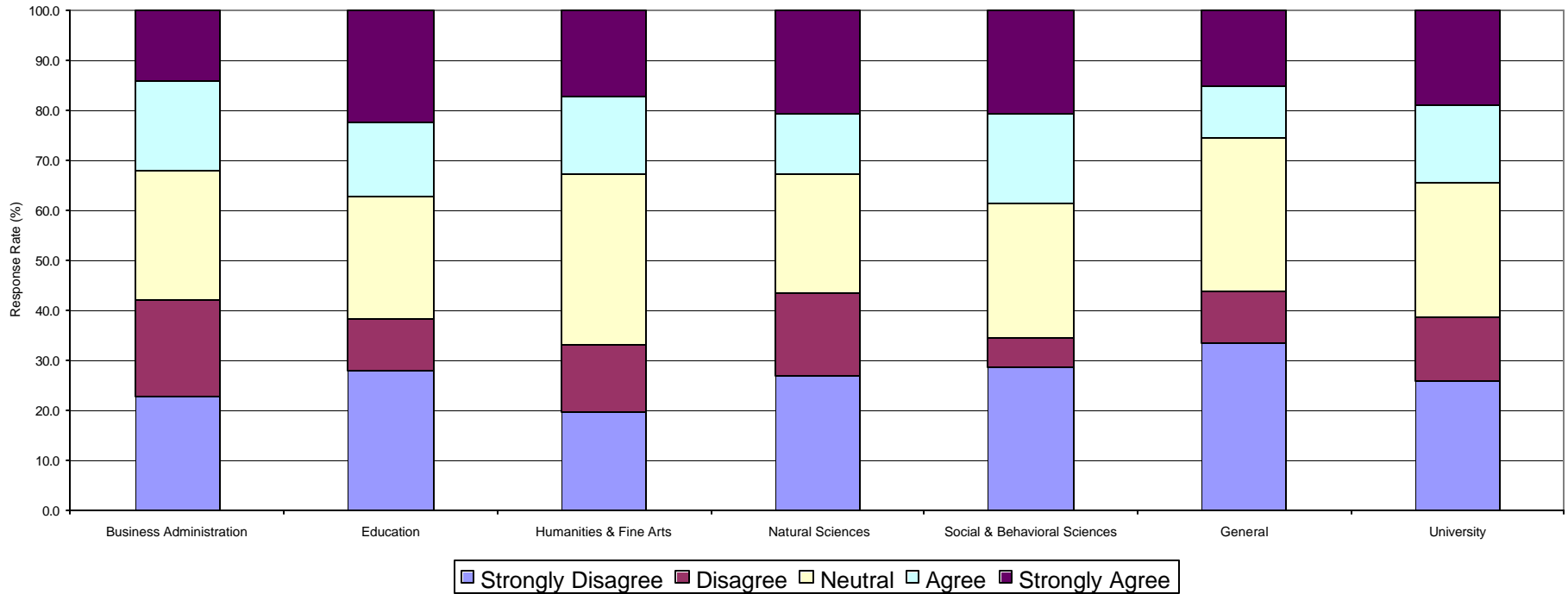
4. My secondary reason for enrolling in summer school is to:

	Stay on schedule		Improve GPA		Graduate early		New interests		Second major/minor		Total	
	Count	Row %	Count	Row %	Count	Row %	Count	Row %	Count	Row %	Count	Row %
College of Business Administration	45	31.7	38	26.8	32	22.5	12	8.5	15	10.6	142	100
College of Education	51	31.9	24	15	44	27.5	11	6.9	30	18.8	160	100
College of Humanities & Fine Arts	40	36	27	24.3	20	18	8	7.2	16	14.4	111	100
College of Natural Sciences	28	40.6	16	23.2	13	18.8	7	10.1	5	7.2	69	100
College of Social & Behavioral Sciences	22	21.8	26	25.7	25	24.8	11	10.9	17	16.8	101	100
General	13	33.3	9	23.1	7	17.9	6	15.4	4	10.3	39	100
University	199	32	140	22.5	141	22.7	55	8.8	87	14	622	100



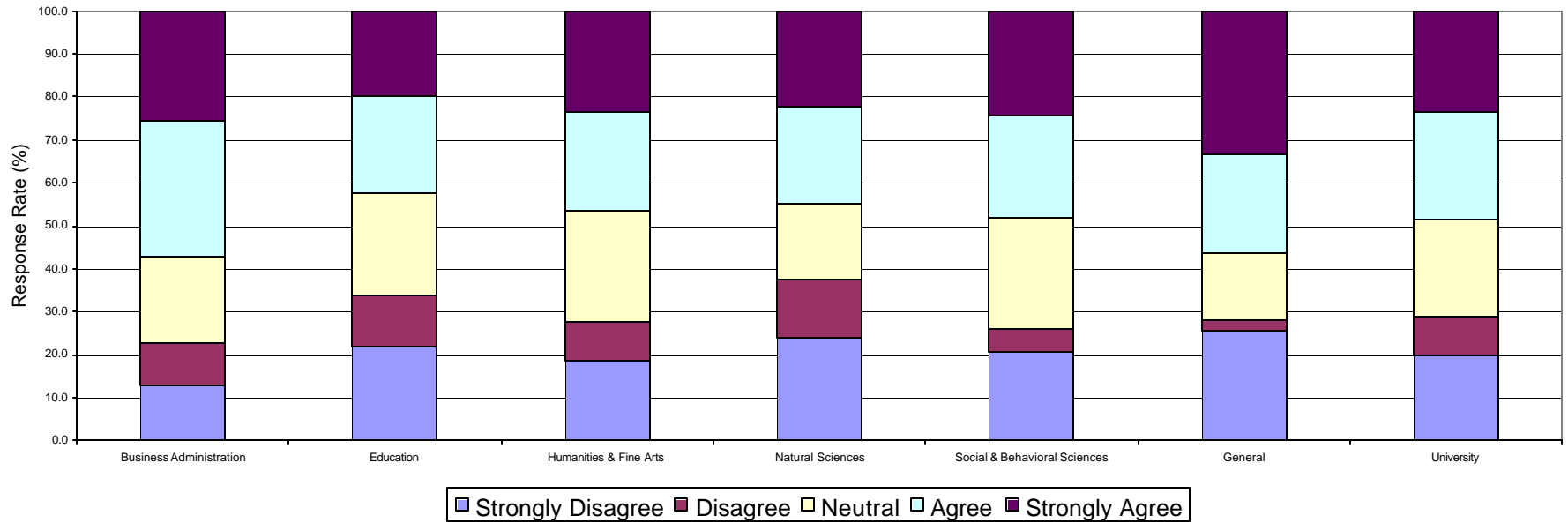
5. Financial aid is a very important part of my decision to enroll in summer school.

	Strongly Disagree		Disagree		Neutral		Agree		Strongly Agree		Total	
	Count	Row %	Count	Row %	Count	Row %	Count	Row %	Count	Row %	Count	Row %
College of Business Administration	30	22.6	26	19.5	34	25.6	24	18	19	14.3	133	100
College of Education	47	28	17	10.1	41	24.4	25	14.9	38	22.6	168	100
College of Humanities & Fine Arts	19	19.6	13	13.4	33	34	15	15.5	17	17.5	97	100
College of Natural Sciences	18	26.9	11	16.4	16	23.9	8	11.9	14	20.9	67	100
College of Social & Behavioral Sciences	33	28.4	7	6	31	26.7	21	18.1	24	20.7	116	100
General	13	33.3	4	10.3	12	30.8	4	10.3	6	15.4	39	100
University	160	25.8	78	12.6	167	26.9	97	15.6	118	19	620	100



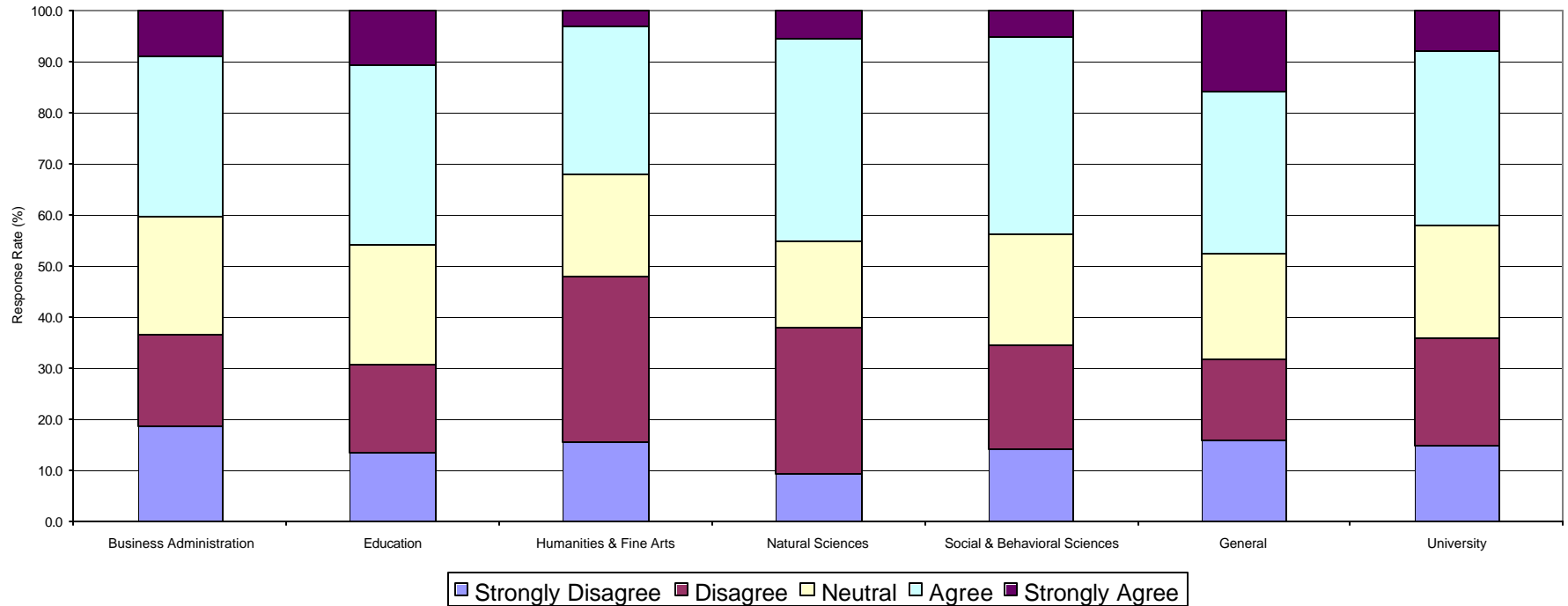
6. Local employment is a very important part of my decision to enroll in summer school.

	Strongly Disagree		Disagree		Neutral		Agree		Strongly Agree		Total	
	Count	Row %	Count	Row %	Count	Row %	Count	Row %	Count	Row %	Count	Row %
College of Business Administration	17	12.8	13	9.8	27	20.3	42	31.6	34	25.6	133	100
College of Education	37	22	20	11.9	40	23.8	38	22.6	33	19.6	168	100
College of Humanities & Fine Arts	18	18.6	9	9.3	25	25.8	22	22.7	23	23.7	97	100
College of Natural Sciences	16	23.9	9	13.4	12	17.9	15	22.4	15	22.4	67	100
College of Social & Behavioral Sciences	24	20.7	6	5.2	30	25.9	28	24.1	28	24.1	116	100
General	10	25.6	1	2.6	6	15.4	9	23.1	13	33.3	39	100
University	122	19.7	58	9.4	140	22.6	154	24.8	146	23.5	620	100



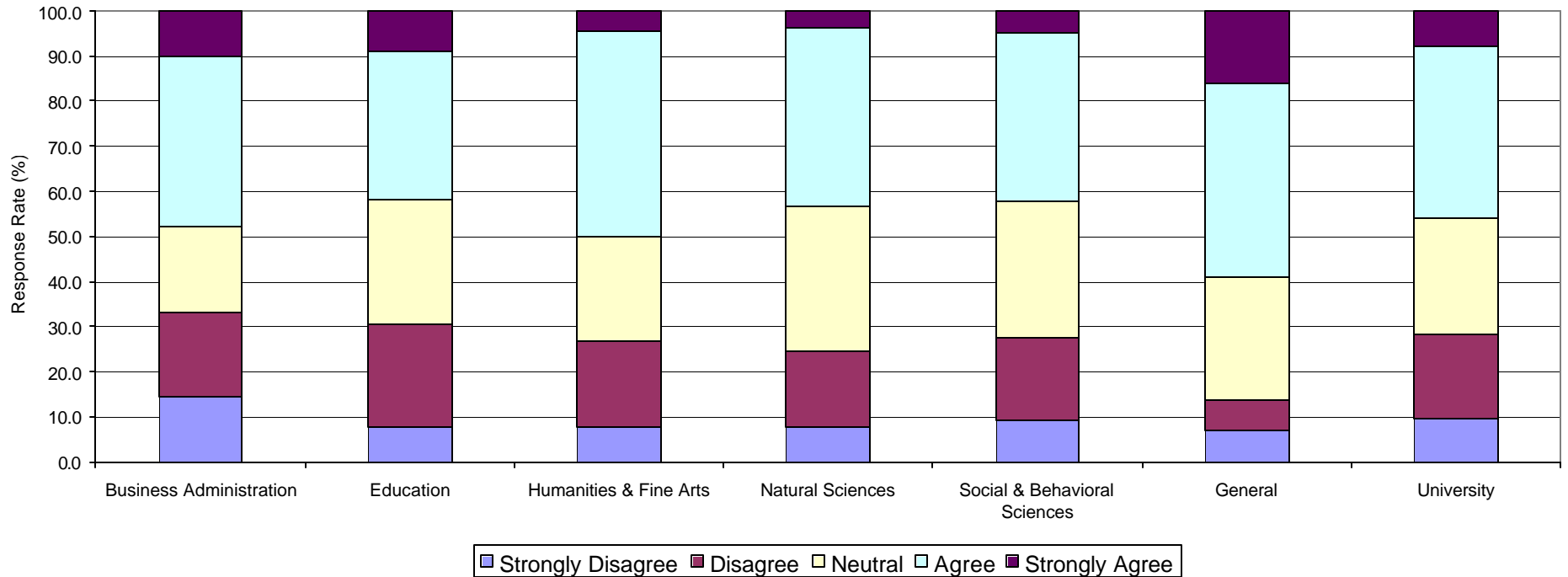
7. The courses available in summer school this year meet my needs.

	Strongly Disagree		Disagree		Neutral		Agree		Strongly Agree		Total	
	Count	Row %	Count	Row %	Count	Row %	Count	Row %	Count	Row %	Count	Row %
College of Business Administration	28	18.5	27	17.9	35	23.2	47	31.1	14	9.3	151	100
College of Education	21	13.4	27	17.2	37	23.6	55	35	17	10.8	157	100
College of Humanities & Fine Arts	14	15.6	29	32.2	18	20	26	28.9	3	3.3	90	100
College of Natural Sciences	5	9.4	15	28.3	9	17	21	39.6	3	5.7	53	100
College of Social & Behavioral Sciences	18	14.1	26	20.3	28	21.9	49	38.3	7	5.5	128	100
General	7	15.9	7	15.9	9	20.5	14	31.8	7	15.9	44	100
University	93	14.9	131	21	136	21.8	212	34	51	8.2	623	100



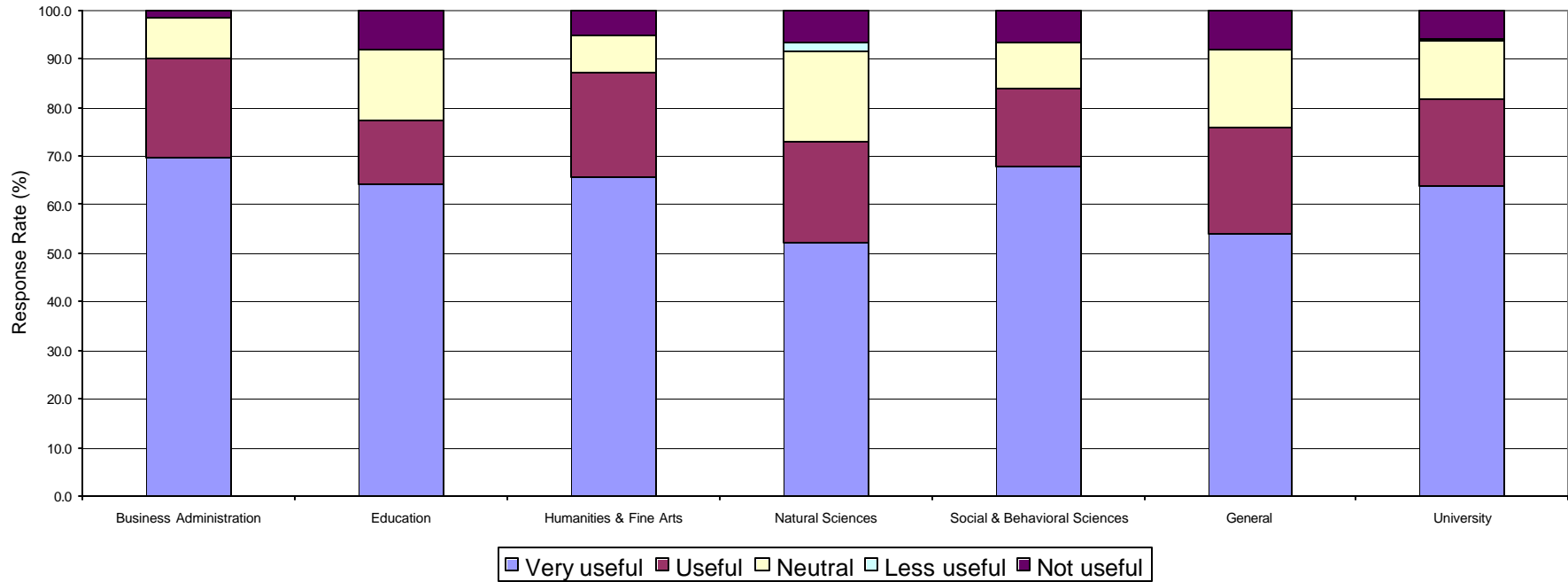
8. The time at which courses are offered this summer meets my needs.

	Strongly Disagree		Disagree		Neutral		Agree		Strongly Agree		Total	
	Count	Row %	Count	Row %	Count	Row %	Count	Row %	Count	Row %	Count	Row %
College of Business Administration	22	14.6	28	18.5	29	19.2	57	37.7	15	9.9	151	100
College of Education	12	7.6	36	22.9	43	27.4	52	33.1	14	8.9	157	100
College of Humanities & Fine Arts	7	7.8	17	18.9	21	23.3	41	45.6	4	4.4	90	100
College of Natural Sciences	4	7.5	9	17	17	32.1	21	39.6	2	3.8	53	100
College of Social & Behavioral Sciences	12	9.4	23	18	39	30.5	48	37.5	6	4.7	128	100
General	3	6.8	3	6.8	12	27.3	19	43.2	7	15.9	44	100
University	60	9.6	116	18.6	161	25.8	238	38.2	48	7.7	623	100



9. Now that a new May summer session is offered, how useful is this session for you.

	Very Useful		Useful		Neutral		Less useful		Not useful		Total	
	Count	Row %	Count	Row %	Count	Row %	Count	Row %	Count	Row %	Count	Row %
College of Business Administration	85	69.7	25	20.5	10	8.2	-	-	2	1.6	122	100
College of Education	110	64.3	22	12.9	25	14.6	-	-	14	8.2	171	100
College of Humanities & Fine Arts	61	65.6	20	21.5	7	7.5	-	-	5	5.4	93	100
College of Natural Sciences	48	52.2	19	20.7	17	18.5	2	2.2	6	6.5	92	100
College of Social & Behavioral Sciences	71	67.6	17	16.2	10	9.5	-	-	7	6.7	105	100
General	20	54.1	8	21.6	6	16.2	-	-	3	8.1	37	100
University	395	63.7	111	17.9	75	12.1	2	0.3	37	6	620	100



10. I prefer summer school courses offered during:

	4 Weeks		6 weeks		8 weeks		Total	
	Count	Row %	Count	Row %	Count	Row %	Count	Row %
College of Business Administration	92	75.4	20	16.4	10	8.2	122	100
College of Education	132	77.2	25	14.6	14	8.2	171	100
College of Humanities & Fine Arts	73	78.5	15	16.1	5	5.4	93	100
College of Natural Sciences	60	65.2	13	14.1	19	20.7	92	100
College of Social & Behavioral Sciences	69	65.7	27	25.7	9	8.6	105	100
General	23	62.2	9	24.3	5	13.5	37	100
University	449	72.4	109	17.6	62	10	620	100

