

10-8-2020

Forward Together Update [COVID Testing Options at UNI & Chart of Common Symptoms], October 8, 2020

University of Northern Iowa

Let us know how access to this document benefits you

Copyright ©2020 University of Northern Iowa

Follow this and additional works at: <https://scholarworks.uni.edu/covid19>



Part of the [Higher Education Commons](#), and the [Public Health Commons](#)

Recommended Citation

University of Northern Iowa, "Forward Together Update [COVID Testing Options at UNI & Chart of Common Symptoms], October 8, 2020" (2020). *UNI Response to COVID-19*. 91.

<https://scholarworks.uni.edu/covid19/91>

This Document is brought to you for free and open access by the UNI COVID-19 at UNI ScholarWorks. It has been accepted for inclusion in UNI Response to COVID-19 by an authorized administrator of UNI ScholarWorks. For more information, please contact scholarworks@uni.edu.

Offensive Materials Statement: Materials located in UNI ScholarWorks come from a broad range of sources and time periods. Some of these materials may contain offensive stereotypes, ideas, visuals, or language.

University of Northern Iowa

Forward Together Update—10/8/20

COVID-19 testing options at UNI

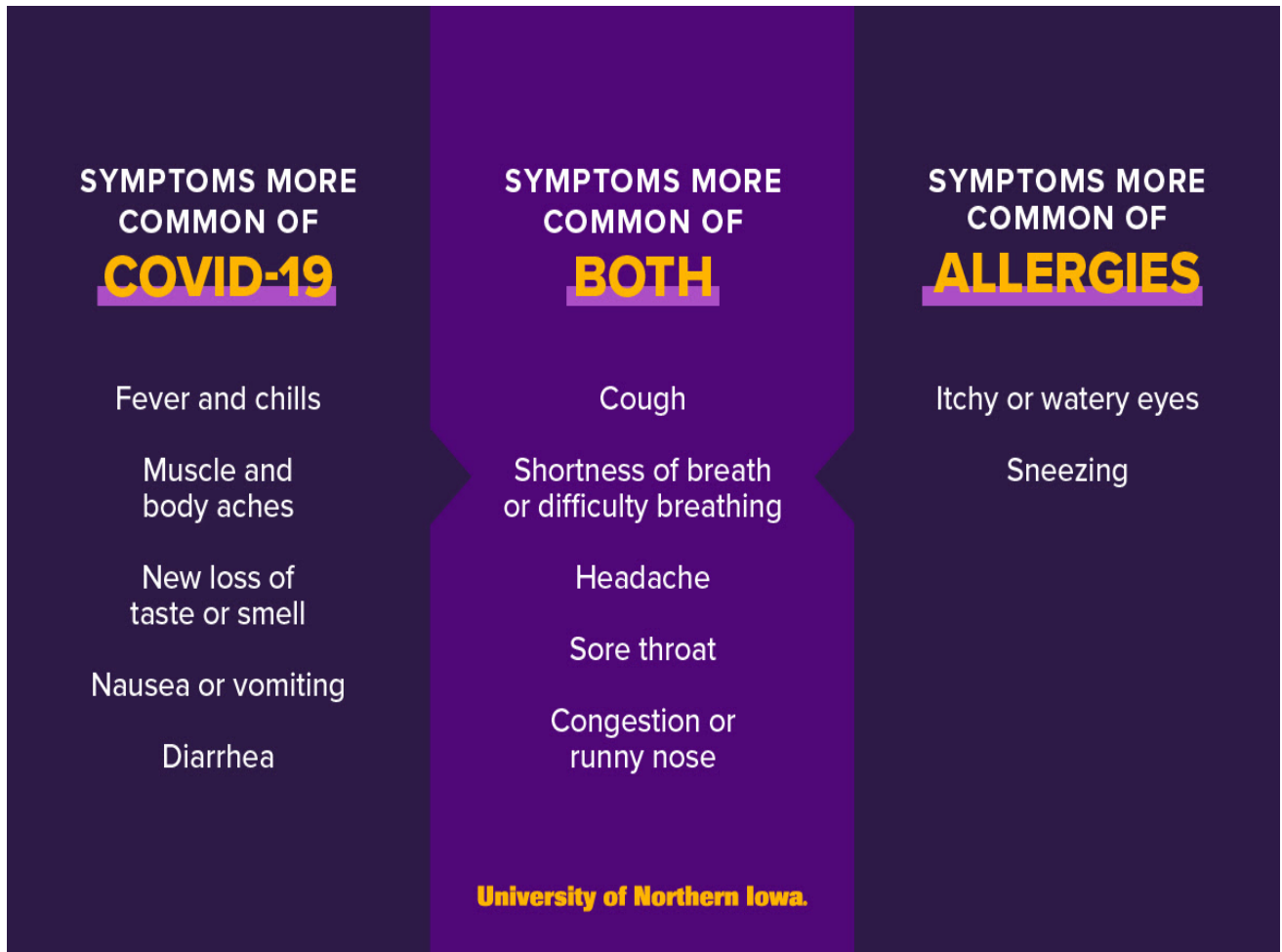
Getting tested for COVID-19 when experiencing symptoms or after being exposed is one of the most important things we can do right now for our health and the health of others as we continue to make our way through this pandemic.

The Student Health Clinic at UNI provides a **free testing option** for all students and employees - and will continue to do so - along with the convenience of staying on-campus. This testing option is the same process as the one offered by Test Iowa locations: After the test, your results are sent to the State Hygenics Lab in Coralville for processing, and you're informed of your results within 48-72 hours. Call the Student Health Clinic at 319-273-2100 to be assessed for testing.

If you choose to get tested at a Test Iowa site it's important to provide your local address because it allows local contact tracers most knowledgeable with your surroundings to handle your case. It's also important to fill out the [Panther Health Survey](#) as it is designed to (a) provide tailored guidance to individuals based on their individual responses/circumstances, (b) facilitate providing relevant campus support services to individuals within the campus community, and (c) support on-campus contact tracing activity.

Wherever you choose to be tested, the important thing is simply that you do. Take care of yourself and protect others. We'll get through this together.

Is it allergies or something more?



Have questions? Reach out to us

Students seeking answers to questions about COVID-19-related issues should email us at forwardtogether@uni.edu. You can also find resources and information about COVID-19 on the [Forward Together website](#).