

Fall 2004

A Profile of Students Enrolled at the University of Northern Iowa, Fall Semester 2004

University of Northern Iowa

Let us know how access to this document benefits you

Copyright ©2004 University of Northern Iowa

Follow this and additional works at: https://scholarworks.uni.edu/ire_documents



Part of the [Higher Education Commons](#)

Recommended Citation

University of Northern Iowa, "A Profile of Students Enrolled at the University of Northern Iowa, Fall Semester 2004" (2004). *Institutional Effectiveness & Planning Documents*. 60.

https://scholarworks.uni.edu/ire_documents/60

This Article is brought to you for free and open access by the Institutional Effectiveness & Planning at UNI ScholarWorks. It has been accepted for inclusion in Institutional Effectiveness & Planning Documents by an authorized administrator of UNI ScholarWorks. For more information, please contact scholarworks@uni.edu.

Offensive Materials Statement: Materials located in UNI ScholarWorks come from a broad range of sources and time periods. Some of these materials may contain offensive stereotypes, ideas, visuals, or language.

*Office of Information
Management and Analysis*

A Profile of Students
Enrolled at the
University of Northern Iowa
Fall Semester 2004



*University of Northern Iowa
441 Rod Library
Cedar Falls, IA 50614-0005*

**A Profile of Students
Enrolled at the
University of Northern Iowa
Fall Semester 2004**

Report #83-04

Thulasi Kumar
Pat Hart

Office of Information Management and Analysis
<http://www.uni.edu/instrsch>

441 Rod Library
University of Northern Iowa
Cedar Falls, IA 50614-0005

November 2004

TABLE OF CONTENTS

Preface.....	vii
At a Glance	viii
Profile Summary	ix-x

SECTION I: TOTAL STUDENT ENROLLMENT FOR FALL SEMESTER 2004

Total Enrollment by Full-Time and Part-Time	3
Fall 2004 Enrollment – Second Week.....	4-5
Resident and Non-Resident Headcount and FTE.....	6
Off Campus Enrollment: Headcount and FTE	7
(Extension, Correspondence, Telecourses, ICN)	
Total Enrollment by Resident and Non-Resident	8
Headcount, FTE and FTE Expressed as a Percentage of Headcount	9
Enrollment by Curricula.....	10-21
Distribution by Curriculum, All Undergraduate Students.....	22
Source of Enrollment	23
Enrollment by Admission County	24
Enrollment by State of Origin	25
International Student Report.....	26-27
Undergraduate and Graduate International Students by Major	28
New and Former International Students by Gender, Level of Studies and Country	29
Distribution of Total Undergraduate and Graduate Student Enrollment by Race/Ethnicity, Gender and Residency.....	30
Distribution of Undergraduate Student Enrollment by College, Race/Ethnicity, Gender and Residence	31
Distribution of Graduate Student Enrollment by College, Race/Ethnicity, Gender and Residence	32
Combined Undergraduate and Graduate Minority Student Enrollment	33

Undergraduate and Graduate Minority Student Enrollment.....	34
Minority Student Enrollment Fall Semesters 1997-2004.....	35
Comparative Average Ages Fall Semesters 1990-2004.....	36
Average Age Trends All Students Fall Semesters 1975-2004.....	37
Enrollment of UNI Married Students or Married/Single Students with Dependents.....	38
Students with Disabilities 1997-2004.....	39
UNI Residence Hall Occupancy.....	40
Percentage of Total Enrollment in Halls.....	41

SECTION II: NEW STUDENTS ENTERING UNI FALL SEMESTER 2004

PART A. FRESHMEN DIRECT FROM HIGH SCHOOL

Distribution by Month of Application Enrolled Freshmen New from High School	45
Distribution by Residency Enrolled Freshmen New from High School	46
Distribution by Miles from UNI Campus Enrolled Freshmen New from Iowa High Schools.....	47
New Enrolled Freshmen by County and ACT Zones	48
Distribution by High School Class Size Enrolled Freshmen New from High School.....	49
Distribution by Percentile Rank Enrolled Freshmen New from High School.....	50
Distribution by ACT Composite Score Enrolled Freshmen New from High School	51
ACT Composite Scores for New Freshmen Students Entering UNI Expressed by Quartile Range 1992-2004.....	52
Comparison of ACT Composite Score for Freshmen Students Entering Fall Term in Selected Years Between 1960–2004.....	53
Percentage Distribution by ACT Composite Score and High School Class Rank for Students New from High School Entering 1978-2004	54
Distribution by Curriculum Enrolled Freshmen New from High School.....	55
Distribution of Full-Time and Part-Time Students Enrolled Freshmen New from High School.....	56
New Degree Students Entering UNI Directly from High School Fall 2004 by Major Interest as Indicated on Application for Admission.....	57

Pre-Professional Prospective Major Areas as Indicated on Application for Admission by New Enrolled Students Entering Directly from High School	58
New Freshmen Comparison of Applications to Enrolled.....	59

PART B. TRANSFERS FROM OTHER COLLEGES AND UNIVERSITIES

New Transfer Degree Students Entering UNI.....	63
New Two-Year College Transfers 1990-2004.....	64
New Transfers Comparison of Applications to Enrolled.....	65

PART C. NEW GRADUATE STUDENTS

New Graduate Students by Major Area	69-70
Iowa Enrolled New Graduate Students by Bachelors Degree College	71
Non-Iowa Enrolled New Graduate Students by Bachelors Degree College	72-73
Enrolled New Graduate Students Distribution by Iowa Admission County	74
New Graduate Students Enrollment by State or Country of Origin.....	75

SECTION III: MISCELLANEOUS

College Level Examination Program (CLEP).....	79
Comparison of New Undergraduate Student Gross Applications for Fall Semester to Admission and Enrollment.....	80
New Undergraduate Students 1994-2004	81
Freshman Class of 1998 Graduation Rate of Full-Time Students, Total Class and Athletes	82
Average Grade Indexes	83
Students Receiving VA Educational Benefits 1973-2004	84
Student Retention and Persistence to Graduation.....	85-88
New Full-Time Direct from HS Freshman Class of 1998 Retention and Graduation Rate	89

P R E F A C E

This profile is based on enrollment at the end of the second week of fall semester classes, 2004, and is intended as a quick reference for information about the student body at UNI. It has been compiled for wide distribution across campus to assist faculty and staff members who need current data in order to perform their job responsibilities, and to provide a consistent set of readily available data to address the myriad of requests for information from sources internal and external to the university.

The data reported here were compiled by a dedicated cadre of UNI staff members who labor relentlessly to provide the information we all need to make sound educational decisions for UNI. They represent the following departments:

Academic/Examination Services

Reginald Green, Director

Admissions

Roland Carrillo, Director of Enrollment Management
Sam Barr, Information Technology Coordinator, Educational Student Services
Joyce Morrow, Associate Director, Financial Aid Office

Office of the Registrar

Philip Patton, Registrar
Patti Rust, Associate Registrar, Systems and Services
Diane Wallace, Coordinator of Student Statistics and University Catalog

Department of Residence

Michael Hager, Director
Gary Daters, Business Manager

Topics are selected for inclusion in the profile based on the relevance of data to institutional decision-making and the volume of data requests received at the various offices that contribute to the profile. Questions concerning information contained in this report should be directed to the Office of Information Management and Analysis or to the specific department as noted in the report.

C. R. Thulasi Kumar
Pat Hart

November 2004

At a Glance

Fall 2004*

Total Enrollment: **12,824**

Undergraduate Students: **11,220**

Graduate Students: **1,604**

89.0% of Undergraduate Students are Full-Time

58.1% of all the Students are Female

93.7% of Undergraduates Students are Iowa residents; **14.8%** are from Black Hawk county

702 out-of-state students come from **45** different states

351 International Students are from **73** foreign countries

6.3% of the enrollment is Minority Students

21.5 is the comparative average age of the Undergraduate Students; **32.6** is the Graduate Students

3,742 students live in University Housing; **46.7%** Freshmen

1,700 enrolled new Freshmen are direct from High School; **92.5%** are Iowa residents

358 new Freshmen direct from High School had a Mean composite ACT score of **22.9**; **8.6%** graduated in the top 10 percent of their high school class; **65.2%** graduated in the top 50 percent

97.7% Freshmen Students are Full-Time

4,216 new Freshmen Students applied; **50.7%** enrolled

1,855 new Transfer Students applied; **71.2%** enrolled from Iowa two-year colleges; **5.4%** enrolled from Out of State two-year colleges

461 new Graduate Students enrolled; **11.9%** are International Students

6,071 new students applied as Undergraduate Students; **79.5%** were cleared for admission

4,829 new students cleared for admission as Undergraduate Students; **57.6%** were enrolled

81.4% of New Students persisted to their second year

64.3% of direct from High School Students in 1998 graduated in 6 years

*Second Week

UNI STUDENT PROFILE SUMMARY

SECTION I: TOTAL STUDENT ENROLLMENT FOR FALL 2004*

(*Note: Fall 2004 enrollment is based on enrollment at the end of the second week of the semester, while fall enrollments prior to Fall 2004 were based on enrollment at the end of the third week of the semester.)

The total enrollment of 12,824 students at UNI for the Fall 2004 semester was a decrease of 617 (4.6%) from the previous year. Undergraduate enrollment decreased 554 (4.7%) while graduate enrollment decreased 63 (3.8%). Of all students enrolled, 83.2% were full-time; 11.0% of the undergraduates had a part-time enrollment (less than 12 semester hours); and 57.7% of the graduates had a part-time enrollment (less than 9 semester hours). Of all students registered, 58.1% were women. Undergraduates who had declared majors in the teaching curricula were 27.6% of all declared majors.

The most popular undergraduate declared majors were: Elementary Education (1,519), Accounting (616), Communication (590), Management (587), Biology (543), Psychology (468), Finance (457), Marketing (429), Early Childhood Education (412), Art (391), Criminology (292), History (288), English (265), Physical Education (248), Music (237), Middle Level Education (235), General Studies (217), and Leisure Services (212).

The most popular graduate majors were: Principalship (81), Educational Psychology (68), Business Administration-MBA (66), Special Education (63), Communication Studies (59), Mental Health Counseling (48), Speech Pathology (48), English (42), Leisure Services (42), Postsecondary Education: Student Affairs (42), Master of Social Work (41), Psychology (39), Curriculum and Instruction: Literacy Education (37), School Counseling (35), Physical Education (31), and TESOL (31). Thirteen (13) students were enrolled in the Doctor of Industrial Technology program and eighty-six (86) in the program leading to the Doctor of Education degree.

Of the 11,220 undergraduate students, 7,576 (67.5%) indicated an interest in Liberal Arts Curricula, 2,890 (25.8%) in the Teaching Curricula, and 754 (6.7%) were undecided or unclassified.

A total of 11,793 (92.0% of all students) were Iowa residents, 2,122 (16.5%) were from Black Hawk County, and 1,323 (10.3%) were from counties contiguous to Black Hawk.

The 351 foreign students enrolled included 188 (8.7% decrease) undergraduate students and 163 (8.4% decrease) graduate students from 73 foreign countries.

Of the 12,824 students, 11,201 (87.3%) were Caucasian and 425 (3.3%) were African American. Hispanics, Asians, and American Indians represented 3.0% of the enrollment. Students with no ethnic response represented 3.6% of the enrollment.

The average age of undergraduates was 21.5 years (0.3 yr. decrease) and graduates was 32.6 years (1.1 yr. decrease).

Total enrollment of veterans receiving educational benefits from the Veterans Administration was 183 students, an increase of 20 (12.3%) from the previous fall semester.

A total of 468 (4.2%) undergraduate students and 452 (28.2%) graduate students were married, 436 (47.4%) of these married students had dependents. An additional 257 (2.0%) students identified themselves as single students with dependents.

A total of 156 students identified themselves as being disabled with 17 as mobility-impaired.

Total residence hall occupancy was 3,637 students, a decrease of 112 (3.1%) from the previous year. About 29.9% of the female students (2,230) and 26.2% of the male students (1,407) reside in residence halls.

SECTION II: NEW GRADUATE STUDENTS FALL 2004

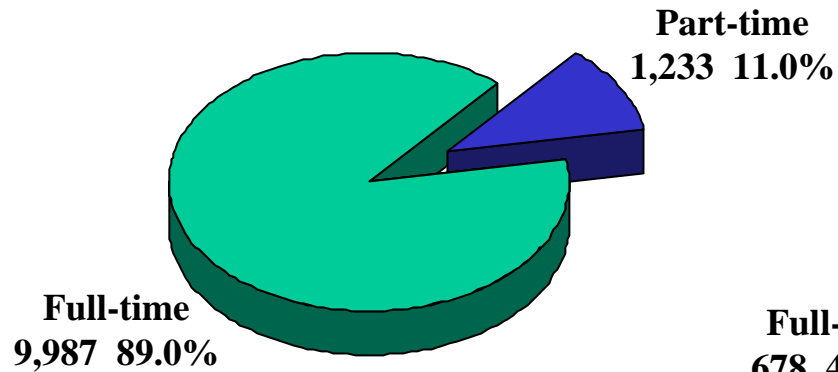
Those students new to graduate study were 385 and represented an increase of 8 (2.1%) from the fall semester 2003. A total of 159 (41.3%) received their bachelor's degree from UNI, 95 (24.7%) from other Iowa colleges and 131 (34.0%) from out-of-state or foreign universities. Of the 385 new graduate students, 272 (70.6%) were residents of Iowa.

The most popular major areas for new graduate students were: Curriculum and Instruction: Literacy Education (34), Principalship (33), Psychology (22), Business Administration-MBA (19), Postsecondary Education: Student Affairs (17), History (15), Physical Education (15), Speech Pathology (15), Communication Studies (14), Master of Social Work (14), Master of Public Policy (14), Athletic Training (11), Educational Psychology (11), Special Education (11), School Counseling (11), Health Education (10), Mental Health Counseling (10), and English (10). There were 56 non-degree students.

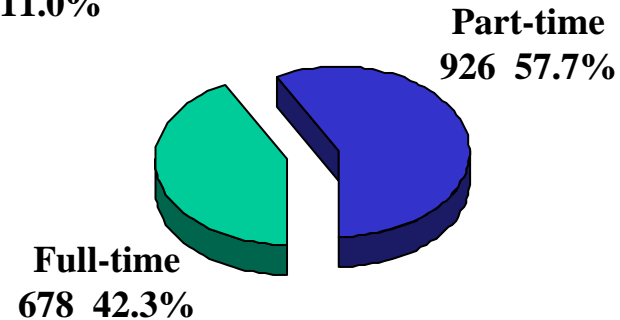
**Section I: Total Student Enrollment
for Fall Semester 2004**

Total Enrollment By Full-Time and Part-Time Fall 2004

UNDERGRADUATE



GRADUATE



Total based on Undergraduate 11,220
Graduate 1,604

University of Northern Iowa
Office of the Registrar
September 2004

UNIVERSITY OF NORTHERN IOWA
Fall 2004 Enrollment - Second Week

	Full-time			Part-time			Total		
	M	W	T	M	W	T	M	W	T
<u>Undergraduates - Total</u>	4264	5723	9987	573	660	1233	4837	6383	11220
<u>Graduates - Total</u>	<u>238</u>	<u>440</u>	<u>678</u>	<u>292</u>	<u>634</u>	<u>926</u>	<u>530</u>	<u>1074</u>	<u>1604</u>
<u>Total Students in</u> Residence, Extension and Correspondence Courses	4502	6163	10665	865	1294	2159	5367	7457	12824

ALL UNDERGRADUATES

Seniors	1407	1942	3349	312	275	587	1719	2217	3936
Juniors	1189	1477	2666	129	126	255	1318	1603	2921
Sophomores	767	1057	1824	51	82	133	818	1139	1957
Freshmen	890	1224	2114	14	71	85	904	1295	2199
Unclassified	11	23	34	67	106	173	78	129	207
TOTAL	4264	5723	9987	573	660	1233	4837	6383	11220

TEACHING

Seniors	338	811	1149	31	51	82	369	862	1231
Juniors	197	446	643	12	21	33	209	467	676
Sophomores	149	331	480	6	8	14	155	339	494
Freshmen	126	358	484	1	4	5	127	362	489
TOTAL	810	1946	2756	50	84	134	860	2030	2890
Percent of Classified Undergraduates									26.2%
Percent of Declared									27.6%

LIBERAL ARTS

Seniors	1068	1130	2198	281	223	504	1349	1353	2702
Juniors	985	1023	2008	116	104	220	1101	1127	2228
Sophomores	569	633	1202	43	66	109	612	699	1311
Freshmen	611	647	1258	13	64	77	624	711	1335
TOTAL	3233	3433	6666	453	457	910	3686	3890	7576
Percent of Classified Undergraduates									68.8%
Percent of Declared									72.4%

NOT DECLARED

Seniors	1	1	2		1	1	1	2	3
Juniors	7	8	15	1	1	2	8	9	17
Sophomores	49	93	142	2	8	10	51	101	152
Freshmen	153	219	372		3	3	153	222	375
TOTAL	210	321	531	3	13	16	213	334	547
Percent of Classified Undergraduates									5.0%

Fall 2004 Enrollment - Second Week
(continued)

	Full-time			Part-time			Total		
	M	W	T	M	W	T	M	W	T
<u>TEACHING (Accepted)</u>									
Seniors	336	809	1145	30	49	79	366	858	1224
Juniors	180	432	612	10	20	30	190	452	642
Sophomores	125	292	417	4	6	10	129	298	427
Freshmen	35	61	96	1	3	4	36	64	100
TOTAL	676	1594	2270	45	78	123	721	1672	2393
<u>TEACHING (Applied)</u>									
Seniors	2	2	4	1	2	3	3	4	7
Juniors	17	14	31	2	1	3	19	15	34
Sophomores	24	39	63	2	2	4	26	41	67
Freshmen	91	297	388		1	1	91	298	389
TOTAL	134	352	486	5	6	11	139	358	497
<u>ALL GRADUATES</u>									
Upper	48	102	150	130	224	354	178	326	504
Lower	190	338	528	162	410	572	352	748	1100

**RESIDENT AND NON-RESIDENT HEADCOUNT AND FTE
ON- AND OFF- CAMPUS ENROLLMENT (Residence, Extension, and Correspondence)
FALL 2004**

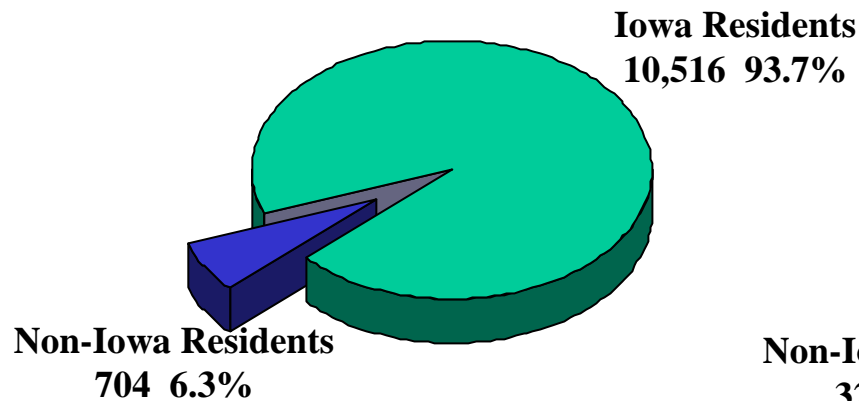
	Headcount		FTE	
	Resident	Non-Resident	Resident	Non-Resident
Undergraduates				
Freshmen	2004	195	1824	173
Sophomores	1860	97	1676	88
Subtotal (lower division)	3864	292	3500	261
Total (lower division)	4156		3761	
Juniors	2777	144	2461	128
Seniors	3747	189	3216	161
Subtotals (upper division)	6524	333	5677	289
Total (upper division)	6857		5966	
Unclassified/Special Students	128	79	36	32
Total (unclassified/special students)	207		68	
TOTAL UNDERGRADUATES	10516	704	9213	582
	11220		9795	
First Professional	n/a	n/a	n/a	n/a
Graduates				
Masters	869	231	650	243
Advanced	408	96	241	77
TOTAL GRADUATES	1277	327	891	320
	1604		1211	
GRAND TOTAL	11793	1031	10104	902
	12824		11006	

**RESIDENT AND NON-RESIDENT HEADCOUNT AND FTE
OFF-CAMPUS ENROLLMENT (Extension, Correspondence, Telecourses, ICN)
FALL 2004**

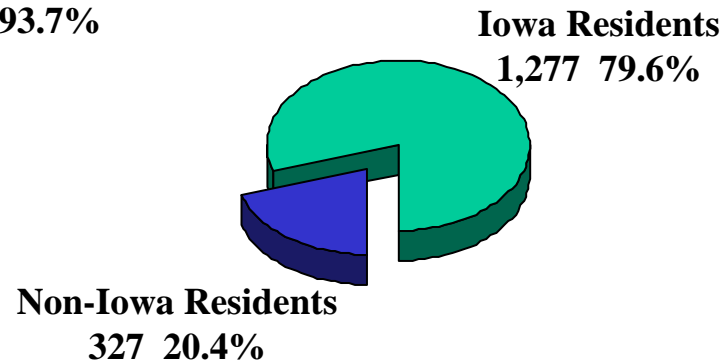
	Headcount		FTE	
	Resident	Non-Resident	Resident	Non-Resident
Undergraduates				
Freshmen	0	0	0	0
Sophomores	5	0	3	0
Subtotal (lower division)	5	0	3	0
Total (lower division)	5		3	
Juniors	12	2	6	1
Seniors	42	3	24	1
Subtotals (upper division)	54	5	30	2
Total (upper division)	59		32	
Unclassified/Special Students	16	13	4	5
Total (unclassified/special students)	29		9	
TOTAL UNDERGRADUATES	75	18	37	7
	93		44	
First Professional	n/a	n/a	n/a	n/a
Graduates				
Masters	229	19	112	18
Advanced	67	8	39	4
TOTAL GRADUATES	296	27	151	22
	323		173	
GRAND TOTAL	371	45	188	29
	416		217	

Total Enrollment By Resident and Non-Resident Fall 2004

UNDERGRADUATE



GRADUATE



Total based on Undergraduate 11,220
Graduate 1,604

University of Northern Iowa
Office of the Registrar
September 2004

**HEADCOUNT, FTE, AND FTE EXPRESSED AS A PERCENTAGE OF HEADCOUNT
FALL SEMESTERS - THIRD WEEK**

UNDERGRADUATES		1995	1996	1997	1998	1999	2000	2001	2002	2003	2004
LD	Heads	5107	5238	5093	5132	5306	5495	5551	5112	4619	4363
	FTE	4631	4721	4512	4539	4733	4904	4888	4505	4032	3829
	%	90.7%	90.1%	88.6%	88.4%	89.2%	89.2%	88.1%	88.1%	87.3%	87.8%
UD											
UD	Heads	6305	6349	6561	6632	6678	6723	6923	7170	7155	6857
	FTE	5507	5519	5796	5835	5830	5883	6053	6256	6251	5966
	%	87.3%	86.9%	88.3%	88.0%	87.3%	87.5%	87.4%	87.3%	87.4%	87.0%
Total											
Total	Heads	11412	11587	11654	11764	11984	12218	12474	12282	11774	11220
	FTE	10138	10240	10308	10374	10563	10787	10941	10761	10283	9795
	%	88.8%	88.4%	88.5%	88.2%	88.1%	88.3%	87.7%	87.6%	87.3%	87.3%
GRADUATES											
MA		1995	1996	1997	1998	1999	2000	2001	2002	2003	2004
MA	Heads	987	1004	1081	1154	1133	1144	1174	1163	1173	1100
	FTE	711	744	763	787	800	845	888	839	862	893
	%	72.0%	74.1%	70.6%	68.2%	70.6%	73.9%	75.6%	72.1%	73.5%	81.2%
Advanced											
Advanced	Heads	403	366	373	411	436	412	422	481	494	504
	FTE	245	225	238	254	265	236	252	279	279	318
	%	60.8%	61.5%	63.8%	61.8%	60.8%	57.3%	59.7%	58.0%	56.5%	63.1%
Total											
Total	Heads	1390	1370	1454	1565	1569	1556	1596	1644	1667	1604
	FTE	956	969	1001	1041	1065	1081	1140	1118	1141	1211
	%	68.8%	70.7%	68.8%	66.5%	67.9%	69.5%	71.4%	68.0%	68.4%	75.5%
ALL STUDENTS GRAND TOTAL											
ALL STUDENTS GRAND TOTAL		1995	1996	1997	1998	1999	2000	2001	2002	2003	2004
ALL STUDENTS GRAND TOTAL	Heads	12802	12957	13108	13329	13553	13774	14070	13926	13441	12824
	FTE	11094	11209	11309	11415	11628	11868	12081	11879	11424	11006
	%	86.7%	86.5%	86.3%	85.6%	85.8%	86.2%	85.9%	85.3%	85.0%	85.8%

Full-time Equivalent (FTE)
Undergraduate 15.5 semester hours
Graduate 9.0 semester hours

ALL STUDENTS

COLLEGE OF SOCIAL AND BEHAVIORAL SCIENCES

CODE	MAJOR	FRESHMEN		SOPHOMORES		JUNIORS		SENIORS		PROSP MEN	MAJ WOM	UNDERGRAD		TOTALS TOTAL	GRADUATES			GRAND TOTAL
		MEN	WOM	MEN	WOM	MEN	WOM	MEN	WOM			MEN	WOM		MEN	WOM	TOTAL	
31F	FAMILY SERVICES			11	3	32	4	56	1	11		8	110	118				118
31L	GERONTOLOGY: LONG TERM CARE			2		2		1		1			6	6				6
31S	GERONTOLOGY: SOCIAL SCIENCES			1		2		3		1			7	7				7
31X	HOME EC: DESIGN + HUMAN ENVIR																	
312	HOME EC IN BUS: FOOD & NUTRITN																	
318	HOME EC: FAMILY SERVICES																	
321	INTERIOR DESIGN					13		24		4	41	4	79	83				83
32S	DIETETICS																	
32T	TEXTILE AND APPAREL	1	1	18		14	3	23	1	17		5	73	78				78
32X	HOME EC IN BUS: CLTHNG & TEXT																	
321	HOME EC BUS:C AND T:FASH MERCH																	
322	HOME ECONOMICS: DIETETICS																	
323	HOME EC/BUS:DSGN & HMN ENVIRON																	
400	PSYCHOLOGY			1	12	21	69	38	98	55	174	115	353	468	14	25	39	507
45M	SOCIAL WORK					8	3	34	9	66	6	69	18	177	195			195
45X	SOCIAL WORK - POTENTIAL																	
450	SOCIAL WORK																	
451	SOCIAL WORK																	
90A	SOCIAL SCIENCE TEACHING-PLAN A			6	1	8	3			5	6	19	10	29	6	35	41	29
90B	SOCIAL SCIENCE TEACHING-PLAN B																	
900	SOCIAL SCIENCE	3	2	6	3	8	10	34	18	1	4	52	37	89				89
91A	INTRAMER ST:ENVRNMTL AWARENESS																	
91B	INTER-AMER ST: BUS & ECONOMICS								1				1	1				1
91C	INTER-AMER ST: CRS-CLTRL ST ED																	
91E	INTER-AMER ST: ENVRNMNTL ST																	
91G	INTRAMER ST:CRS-CLTRL/GBL HLTH																	
91H	INTER-AMER ST: HUM & FINE ARTS																	
91S	INTER-AMER ST: SOCIAL SCIENCES								1				1	1				1
912	ASIAN STUDIES					1							1	1				1
94C	POLITICAL COMMUNICATION						1	1	1	6	4		5	7	12			12
94E	PUBLIC ADMIN: ECON & FINANCE					1							1	1				1
94G	PUBLIC ADMIN: COMM & REGNL DEV					2					1		2	2	4			4
94H	PUBLIC ADMIN: HUMAN RESOURCES	1		1		2	2		1				3	4	7			7
94P	PUBLIC ADMIN: PUB POL/PUB SERV					1	2	1	2				2	4	6			6
94Q	PUB ADMIN: INTRNTL PUB POLICY					1			2				2	1	3			3
94X	PUBLIC ADMINISTRATION																	
940	POLITICAL SCIENCE	3		8	7	19	20	23	16	27	10	80	53	133				133
944	PUBLIC ADM: GENERAL ADM					4	1	3	3	1	1	8	5	13				13
945	PUBLIC ADM: ST AND COMM PLAN						1						1	1				1
946	PUBLIC ADM: PUBLIC LAW					4		1					5	5				5
947	PUBLIC ADM: PUBLIC PERSONNEL						1							1	1			1
950	PUBLIC POLICY																	
960	HISTORY	5		24	15	50	22	65	42	42	23	186	102	288	10	17	27	27
965	EUROPEAN STUDIES			1				1				2	2	2				2
970	GEOGRAPHY			4	1	3		10	3	1	1	18	5	23	8	7	15	38
971	GEOGRAPHY: ENVIRONMENTAL			2		2	2	8	1			12	3	15				15
972	GEOGRAPHY: GEOGRAPHIC INFO SCI					1		1				2	2	2				2
980	SOCIOLOGY		2	1	5	12	17	24	24	6	16	43	64	107	5	6	11	118
982	CRIMINOLOGY	5	2	18	17	47	19	52	50	43	39	165	127	292				292
990	ANTHROPOLOGY		2	2	4	3	5	1	12	3	2	9	25	34				34

COLLEGE TOTALS

C0047058

ALL STUDENTS - ENROLLMENT BY CURRICULA FOR FALL 2004

AS OF DATE 09/03/2004
PRINT DATE 09/04/2004
PAGE 12

ALL STUDENTS

COLLEGE OF SOCIAL AND BEHAVIORAL SCIENCES

CODE	MAJOR	FRESHMEN		SOPHOMORES		JUNIORS		SENIORS		PROSP MEN	MAJ WOM	UNDERGRAD		TOTALS TOTAL	GRADUATES			GRAND TOTAL
		MEN	WOM	MEN	WOM	MEN	WOM	MEN	WOM			MEN	WOM		MEN	WOM	TOTAL	
	BY SEX	18	9	73	109	195	272	282	450	200	417	768	1257	2025	55	100	155	2180
	BY CLASSIFICATION		27		182		467		732		617			2025			155	2180

ALL STUDENTS

COLLEGE OF BUSINESS

CODE	MAJOR	FRESHMEN		SOPHOMORES		JUNIORS		SENIORS		PROSP	MAJ	UNDERGRAD		TOTALS	GRADUATES			GRAND
		MEN	WOM	MEN	WOM	MEN	WOM	MEN	WOM			MEN	WOM		TOTAL	MEN	WOM	
13A	MARKETING: GENERAL			5	3	21	21	33	22	64	42	123	88	211				211
13B	MARKETING: MANAGEMENT					9	7	14	8	2	3	25	18	43				43
13C	MARKETING: RETAILING					1		1			1	2	1	3				3
13D	MARKETING: SALES & ADVERTISING					14	26	25	40	13	21	52	87	139				139
13R	MARKETING: INTERACTIVE RETAILNG						1	1	3	1		2	4	6				6
13S	MARKETING: SERVICES MARKETING																	
141	MANAGEMENT INFORMATION SYSTEMS			1	1	26	6	56	7	43	6	126	20	146				146
143	BUSINESS TEACHING				1	3	3	6	4	4	5	13	13	26				26
145	BUSINESS EDUCATION																	
15B	MANAGEMENT: PRODUCTION																	
15C	MANAGEMENT: HUMAN RESOURCE			1		6	21	15	29	5	8	27	58	85				85
15D	MANAGEMENT: BUSINESS ADMIN			4	8	77	42	85	65	106	50	272	165	437				437
15P	PRE MACC								2				2	2				2
15S	MANAGEMENT: SUPPLY CHAIN & OPER					5	3	3	3	1	1	9	7	16				16
15X	BUSINESS - POTENTIAL									116	81	116	81	197				197
15Y	CPA ADVANCED STUDIES							1	1			1	1	2				2
15Z	PRE MBA							10	8			10	8	18		1		19
150	MANAGEMENT								1	32	16	32	17	49				49
152	ACCOUNTING			11	4	49	64	97	121	141	129	298	318	616				616
153	MARKETING									12	15	12	15	27				27
157	BUSINESS ADMINISTRATION														48	18	66	66
158	ACCOUNTING														9	10	19	19
16X	FINANCE																	
160	FINANCE: GENERAL						1	1	1		1	1	3	4				4
161	FINANCE: REAL ESTATE									1		1		1				1
165	FINANCE			4	4	71	42	100	73	111	47	286	166	452				452
166	REAL ESTATE			1	2	36	14	46	35	25	13	108	64	172				172
920	ECONOMICS							1		1		2		2				2
921	ECONOMICS: GENERAL ECONOMICS			2	1	6	1	9	1	8	2	25	5	30				30
922	ECONOMICS: QUANTITATIVE TCHNQS			1		1		9				10	1	11				11
923	ECONOMICS: BUSINESS ANALYSIS			2		3	5	15	14	5	2	25	21	46				46
924	ECONOMICS: COMNTY ECONOMIC DEV					3	1	4	1			7	2	9				9
COLLEGE TOTALS				32	24	330	259	532	439	691	443	1585	1165	2750	58	28	86	2836
BY SEX																		
BY CLASSIFICATION						56	589		971		1134			2750			86	2836

ALL STUDENTS

COLLEGE OF EDUCATION

CODE	MAJOR	FRESHMEN		SOPHOMORES		JUNIORS		SENIORS		PROSP MAJ		UNDERGRAD		TOTALS	GRADUATES			GRAND TOTAL
		MEN	WOM	MEN	WOM	MEN	WOM	MEN	WOM	MEN	WOM	MEN	WOM	TOTAL	MEN	WOM	TOTAL	
170	POST-SEC ED: STUDENT AFFAIRS														13	29	42	42
19Z	PRE-MA/ED.D.																	
20X	EDUCATION (ED D)																	
200	EDUCATION (COUNSELING)																	
201	EDUCATION (CURR & INSTR)														10	31	41	41
202	EDUCATION (ADMINISTRATION)																	
206	EDUCATION (LEADERSHIP)														20	25	45	45
208	ELEMENTARY EDUCATION		2	1	5		4	2	19		4	3	34	37				37
21D	MIDDLE LEVEL EDUC DUAL MAJOR	4	1	6	30	18	39	26	62	1	2	55	134	189				189
21G	MIDDLE LEVEL EDUCATION																	
21K	C & I: EDUCATION OF THE GIFTED														2	17	19	19
21L	C & I: ELEMENTARY EDUCATION																	
21M	MIDDLE LEVEL EDUCATION														1	10	11	11
21N	C & I: MIDDLE LEVEL EDUCATION														1	35	36	36
21Q	C & I: LITERACY EDUCATION																	46
21T	MIDDLE LEVEL EDUCATION					2	1	10	33			12	34	46				46
21U	C&I: EARLY CHILDHOOD EDUCATION															5	5	5
210	EARLY CHILDHOOD EDUCATION		6	2	47	2	110	5	215		25	9	403	412		17	17	429
212	ELEMENTARY EDUCATION	7	29	30	204	52	294	91	548	27	200	207	1275	1482		2	2	1484
215	EDUC OF GIFTED																	
217	ELEM READING & LANG ARTS																	
22S	SPECIAL EDUCATION															12	12	12
220	MIDDLE SCHL/JR HIGH SCHL ED																	
221	SP ED MENTL DISABL MOD/SEV/PRO				1	1	4		15		7	1	27	28				28
228	EARLY CHILDHOOD SPECIAL EDUC																	
230	READING EDUCATION															1	1	1
234	SECONDARY READING																	
240	SPECIAL EDUCATION														4	47	51	51
26C	ADVANCE STUDIES CERT IN ED ADM														18	20	38	38
262	ADM & SUPERV - ELEM PRINCPL																	
263	ADM & SUPERV - SEC PRINCPL																	
266	ADM & SUPERV - SCHL BUS MNGMT																	
268	PRINCIPALSHIP														42	39	81	81
27A	COMM & TRAINING TECHNOLOGY																	
27P	PERFORMANCE & TRAINING TECHNGY														8	14	22	22
274	EDUCATIONAL TECHNOLOGY															1	1	1
275	MEDIA																	
276	COMPUTER APPLCTNS IN ED																	
277	EDUCATIONAL TECHNOLOGY														1	3	4	4
278	C & I: EDUCATIONAL TECHNOLOGY														2	3	5	5
279	C&I: INSTRUCTIONAL TECHNOLOGY														3	6	9	9
280	COUNSELING														1	1	1	1
285	SCHOOL COUNSELING														9	26	35	35
286	COLLEGE/UNIVERSITY STDNT SRVCS																	
288	MENTAL HEALTH COUNSELING														6	42	48	48
290	EDUCATIONAL PSYCHOLOGY															15	15	15
293	EDUC PSYCH - SCHOOL PSYCH														2	17	19	19
297	EDUC PSYCH - TEACHING																	
298	EDUC PSYCH: PROF DEV FOR TCHRS														4	30	34	34
350	LIBRARY SCIENCE															1	1	1
353	SCHOOL LIBRARY MEDIA STUDIES															22	22	22

C0047058

ALL STUDENTS - ENROLLMENT BY CURRICULA FOR FALL 2004

AS OF DATE 09/03/2004
PRINT DATE 09/04/2004
PAGE 16

ALL STUDENTS

COLLEGE OF EDUCATION

CODE	MAJOR	FRESHMEN		SOPHOMORES		JUNIORS		SENIORS		PROSP	MAJ	UNDERGRAD		TOTALS	GRADUATES			GRAND
		MEN	WOM	MEN	WOM	MEN	WOM	MEN	WOM	MEN	WOM	MEN	WOM	TOTAL	MEN	WOM	TOTAL	TOTAL
44X	COMMUNITY RECREATION																	
44Y	COMM REC:YOUTH AGENCY ADMIN																	
440	COMM RECREATION: AQUATICS																	
441	COMM RECREATION: ART																	
442	COMM RECREATION: CAMPING																	
443	COMM RECREATION: DANCE																	
444	COMM RECREATION: MUSIC																	
445	COMM RECREATION: SPORTS																	
446	COMM RECREATION: THEATRE																	
COLLEGE TOTALS																		
	BY SEX	18	41	74	324	152	542	260	1048	120	340	624	2295	2919	193	528	721	3640
	BY CLASSIFICATION		59		398		694		1308		460			2919			721	3640

ALL STUDENTS

COLLEGE OF HUMANITIES AND FINE ARTS

CODE	MAJOR	FRESHMEN		SOPHOMORES		JUNIORS		SENIORS		PROSP	MAJ		UNDERGRAD		TOTALS TOTAL	GRADUATES			GRAND TOTAL	
		MEN	WOM	MEN	WOM	MEN	WOM	MEN	WOM		MEN	WOM	MEN	WOM		TOTAL	MEN	WOM		TOTAL
48C	COMMUNICATION/CULTURE & COMM				1			1		1	1		2	2	4				4	
48E	COMMUNICATION/ELECTRONIC MEDIA			3		14	11	15	15	64	29	96	55	151					151	
48G	COMMUNICATION/GENERAL COMM	1		2	2	7	9	11	19	27	58	48	88	136					136	
48H	COMMUNICATION/COMNTY & COMNCTN								1		1		2	2	2				2	
48I	COMMUNICATION/INTRPRSONAL COMM						2		7	2	7	2	16	18					18	
48M	COMMUNICATION STUDIES																			
48O	COMMUNICATION/ORGNZTNAL COMM					2	9	4	23	5	11	11	43	54					54	
48P	COMMUNICATION/PUBLIC RELATIONS		1	2	3	10	20	16	39	27	88	55	151	206					206	
48T	COMMUNCATN & THEATRE ARTS 7-12			2				4	7	2	4	8	11	19					19	
48O	COMMUNICATION STUDIES																19	40	59	59
49A	THEATRE: PERFORMANCE--ACTING		2	1	3	7	3	7	2	8	3	23	13	36					36	
49D	THEATRE: PERFORMANCE-DIRECTING																			
49E	THEATRE: THEATRE EDUCATION						1						1	1					1	
49F	THEATRE:DRAMA & THEATRE YOUTH				1	1			2	1		2	3	5					5	
49G	THEATRE ARTS: GENERAL																			
49H	THEATRE: HISTORY/THEORY/LIT																			
49M	THEATRE: MUSICAL THEATRE																			
49P	THEATRE: DESIGN & PRODUCTION				2	2	4	5	4	2	1	9	11	20					20	
49S	THEATRE: SPECIALIZED STUDIES																			
49O	THEATRE		2		2	2	3	2	1	6	10	10	18	28					28	
50A	THEATRE ARTS: ACTING							1				1		1					1	
51O	COMMUNICATIVE DISORDERS				4		19	1	23	1	52	2	98	100					100	
51I	SPEECH PATHOLOGY																48	48	48	
52A	MUSIC EDUCATION:CHORAL/GENERAL	3	11	6	5	3	7	3	7	2	2	17	32	49					49	
52B	MUSIC EDUCATION: INSTRUMENTAL	8	12	13	6	1	6	13	14			35	38	73					73	
52C	MUSIC ED: ELEM/GENERAL																			
52E	MUSIC EDUCATION: JAZZ	1	1	4		1		2	1			8	2	10					10	
52P	PIANO PERFORMANCE & PEDAGOGY																			
52O	MUSIC	8	11	10	6	7	6	13	7	2	2	40	32	72	3	7	10		82	
52I	MUSIC EDUCATION									3	1	3	1	4	8	5	13		17	
522	COMPOSITION - THEORY	3		1	1					3		7	1	8	1		1		9	
523	MUSIC HISTORY															1	1		1	
524	PERFORMANCE																			
527	CONDUCTING			2	1	4	4	1	6		3	7	14	21	9	9	18		39	
56O	JAZZ PEDAGOGY														4		4		4	
60H	ART: HISTORY EMPHASIS		1		3		3	1	4		4	1	15	16					16	
60S	ART: STUDIO EMPHASIS	10	5	15	26	25	30	33	61	11	22	94	144	238					238	
60O	ART		1	1	16	11	19	17	29	3	14	32	79	111	1	3	4		115	
605	ART: STUDIO BFA					2	3	15	5	1		18	8	26					26	
62O	ENGLISH	3	1	13	25	23	47	37	69	9	38	85	180	265	9	33	42		307	
629	TCHG ENG TO SPKRS OF OTHR LANG			1			2	1	8	1	5	3	15	18	6	25	31		49	
64O	RELIGION																			
64I	THE STUDY OF RELIGION	2	1	6	3	7	4	9	8	1	1	25	17	42					42	
645	PHILOSOPHY & RELIGION																		1	
65O	PHILOSOPHY	2				11	2	6	2	4	2	24	6	30					30	
685	WOMEN'S STUDIES															11	11		11	
692	TESOL/FRENCH						1		1				2	2	2	1	3		5	
694	TESOL/GERMAN															1	1		1	
697	TESOL/RUSSIAN								2				2	2					2	
698	TESOL/SPANISH				2				4		1		7	7		3	3		10	
70A	MODERN LANGUAGE: FRENCH/GERMAN							1				1		1					1	

ALL STUDENTS

COLLEGE OF HUMANITIES AND FINE ARTS

CODE	MAJOR	FRESHMEN		SOPHOMORES		JUNIORS		SENIORS		PROSP MAJ		UNDERGRAD		TOTALS	GRADUATES			GRAND	
		MEN	WOM	MEN	WOM	MEN	WOM	MEN	WOM	MEN	WOM	MEN	WOM	TOTAL	MEN	WOM	TOTAL	TOTAL	
70B	MODERN LANG: FRENCH/PORTUGUESE																		
70C	MODERN LANG: FRENCH/RUSSIAN																		
70D	MODERN LANG: FRENCH/SPANISH				1		1						3	3				3	
70E	MODERN LANG: GERMAN/PORTUGUESE																		
70F	MODERN LANG: GERMAN/RUSSIAN								1				1	1				1	
70G	MODERN LANG: GERMAN/SPANISH								1				2	2				2	
70H	MODRN LANG: PORTUGUESE/RUSSIAN																		
70I	MODRN LANG: PORTUGUESE/SPANISH				2	2		1					2	4	6			6	
70J	MODERN LANG: RUSSIAN/SPANISH												1	1				1	
70K	MODERN LANGUAGE: FRENCH/GERMAN																		
70L	MODERN LANG: FRENCH/PORTUGUESE																		
70M	MODERN LANG: FRENCH/RUSSIAN																		
70N	MODERN LANG: FRENCH/SPANISH									2			3	3				3	
70O	MODERN LANG: GERMAN/PORTUGUESE										1								
70P	MODERN LANG: GERMAN/RUSSIAN																		
70Q	MODERN LANG: GERMAN/SPANISH																		
70S	MODRN LANG: SPANISH/PORTUGUESE												1	1				1	
70T	MODERN LANG: SPANISH/RUSSIAN		1				1		1				2	2				2	
70U	MODERN LANGUAGE: GERMAN/FRENCH																		
70V	MODERN LANG: SPANISH/FRENCH																		
70W	MODERN LANG: SPANISH/GERMAN																		
700	MAJOR IN TWO LANGUAGES																1	1	1
72B	FRENCH																		
72L	FRENCH				2	1	2	4	1	4		1	5	10	15				15
720	FRENCH					5	1	1	1	8	1	1	3	14	17	1	12	13	30
74B	GERMAN						1	3	3	1			1	1				1	
74L	GERMAN												4	4	8			8	
740	GERMAN					1			3	4		2	3	7	10	1	5	6	16
770	RUSSIAN						1	1					1	1	2			2	
780	SPANISH		2		2	12	1	19	20	53	3	24	26	110	136	2	8	10	146
782	TRANSLATION/INTERPRETATION																		
COLLEGE TOTALS																			
BY SEX		41	52	89	134	146	247	250	448	190	388	716	1269	1985	68	213	281	2266	
BY CLASSIFICATION			93		223		393		698		578			1985			281	2266	

ALL STUDENTS

COLLEGE OF NATURAL SCIENCES

CODE	MAJOR	FRESHMEN		SOPHOMORES		JUNIORS		SENIORS		PROSP MAJ		UNDERGRAD		TOTALS	GRADUATES			GRAND TOTAL
		MEN	WOM	MEN	WOM	MEN	WOM	MEN	WOM	MEN	WOM	MEN	WOM	TOTAL	MEN	WOM	TOTAL	
82S	SCIENCE EDUCATION																	
820	SCIENCE																	
821	SCIENCE EDUCATION														10	17	27	27
823	SCIENCE: ENVIRON PLANNING																	
824	JUNIOR HIGH SCHOOL SCIENCE																	
825	ALL SCIENCES					1		2	1				2	2	4			4
826	SCIENCE ED FOR ELEM SCHOOLS																	
83H	ENVIRONMENTAL HEALTH																	
83S	ENVIRONMENTAL SCIENCE														1	5	6	6
83T	ENVIRONMENTAL TECHNOLOGY														2	2	2	2
830	ENVIRONMENTAL SCI/TECH														1	1	1	1
84A	BIOLOGY			3	3	1	2	8	6				12	11	23			23
84B	BIOLOGY: BIOLOGICAL RESOURCES																	
84C	BIOLOGY: ECOLOGY & SYSTEMATICS	3	3	4	10	4	3	9	8		1		20	25	45			45
84H	BIOLOGY - HONORS RESEARCH																	
84I	BIOLOGY: MICROBIOLOGY	2		1	1		4	2	2				5	7	12			12
84K	BIOLOGY	8	24	11	21	18	18	9	25	3	7	49	95	144				144
84L	BIOLOGY: ENVIRONMENTAL		1					1				1	1	2				2
84M	BIOLOGY: BIOMEDICAL	28	42	18	41	30	50	40	37	2	1	118	171	289				289
84P	BIOLOGY: PLANT BIOSCIENCE																	
84Q	BIO: ECLGY&SYSMTG-HONORS RSRCH																	
84R	BIOLOGY-HONORS RESEARCH																	
84S	BIOLOGY														3	3	6	6
84T	BIOTECHNOLOGY-HONORS RESEARCH								1				1	1				1
84U	BIOLOGY: BIOMEDCL-HONORS RESCH																	
84V	BIO: MICROBLGY-HONORS RESEARCH																	
84W	BIO: PLANT BIOSCI-HONORS RSRCH																	
84X	BIOLOGY																	
844	BIOLOGY	4		3		1	5	9	3		2	17	10	27				27
845	BIOLOGY														2	1	3	3
848	BIOTECHNOLOGY	5		5	1	1	2	4	4			15	7	22				22
849	NATURAL HISTORY INTERPRETATION																	
86B	CHEMISTRY: BIOCHEMISTRY	2	4	1			5	3	3			6	12	18				18
86E	CHEMISTRY: ENVIRONMENTAL CHEM																	
86X	CHEMISTRY																	
862	CHEMISTRY - MARKETING				1	1	2	2	4	1		4	7	11				11
863	CHEMISTRY	3	4	2		3	2	7	5	1	2	16	13	29				29
865	CHEMISTRY	1	1	5	5	7	4	7	11	3		23	21	44	1		1	45
866	CHEMISTRY														2	1	3	3
87E	GEOLOGY:ENVIRONMENTAL EMPHASIS																	
87N	EARTH SCIENCE-INTRP NATURALIST			1	1	2	3	3	2	3		9	6	15				15
870	EARTH SCIENCE		1	1	2	5	6	17	9	1		24	18	42				42
871	GEOLOGY						1	2		1	1	3	2	5				5
872	GEOLOGY			1		2	2	4				7	2	9				9
88X	PHYSICS, NON-TEACHING																	
880	PHYSICS			2	1	3		1	2	2	2	8	5	13				13
885	PHYSICS			1	1	1		6	2	2		10	3	13				13
886	APPLIED PHYSICS			1		1		1	1	3	2	6	3	9				9
888	APPLIED PHYSICS/ENGINEERING	1		2		2	1	1		7		13	1	14				14
COLLEGE TOTALS																		
BY SEX		103	85	147	105	266	154	436	190	121	58	1073	592	1665	77	54	131	1796

C0047058

ALL STUDENTS - ENROLLMENT BY CURRICULA FOR FALL 2004

AS OF DATE 09/03/2004
PRINT DATE 09/04/2004
PAGE 21

ALL STUDENTS

COLLEGE OF NATURAL SCIENCES

CODE	MAJOR	FRESHMEN		SOPHOMORES		JUNIORS		SENIORS		PROSP	MAJ	UNDERGRAD		TOTALS TOTAL	GRADUATES			GRAND TOTAL
		MEN	WOM	MEN	WOM	MEN	WOM	MEN	WOM			MEN	WOM		MEN	WOM	TOTAL	
	BY CLASSIFICATION		188		252		420		626		179		1665			131	1796	

C0047058

ALL STUDENTS - ENROLLMENT BY CURRICULA FOR FALL 2004

AS OF DATE 09/03/2004
PRINT DATE 09/04/2004
PAGE 22

ALL STUDENTS

CODE	MAJOR	FRESHMEN		SOPHOMORES		JUNIORS		SENIORS		PROSP MEN	MAJ WOM	UNDERGRAD		TOTALS TOTAL	GRADUATES			GRAND TOTAL	
		MEN	WOM	MEN	WOM	MEN	WOM	MEN	WOM			MEN	WOM		TOTAL	MEN	WOM		TOTAL
00X	OTHERS										2		2	2				2	
090	NON-DEGREE														72	150	222	222	
CONTINUING ED & SPECIAL PROGRAMS																			
001	INDIVIDUAL STUDIES								1	1			1	1	2			2	
005	GENERAL STUDIES	1		7	8	49	25	69	55	1			127	88	215			215	
006	GENERAL STUDIES - NURSES						1		1					2	2			2	
009	BACHELOR OF LIBERAL STUDIES					3		3	9				6	9	15			15	
INTERDISCIPLINARY																			
680	HUMANITIES			2		2	1	4	2				8	3	11			11	
911	RUSSIAN/EAST EUROPEAN STUDIES			1			1						1	1	2			2	
913	AMERICAN STUDIES																		
PRE-PROFESSIONALS																			
										10	112		10	130	140			140	
UNDECIDED																			
													226	354	580	1	1	2	582
UNCLASSIFIED																			
													42	78	120			120	
SPECIAL																			
													26	45	71			71	

Distribution by Curriculum All Undergraduate Students Fall 2004

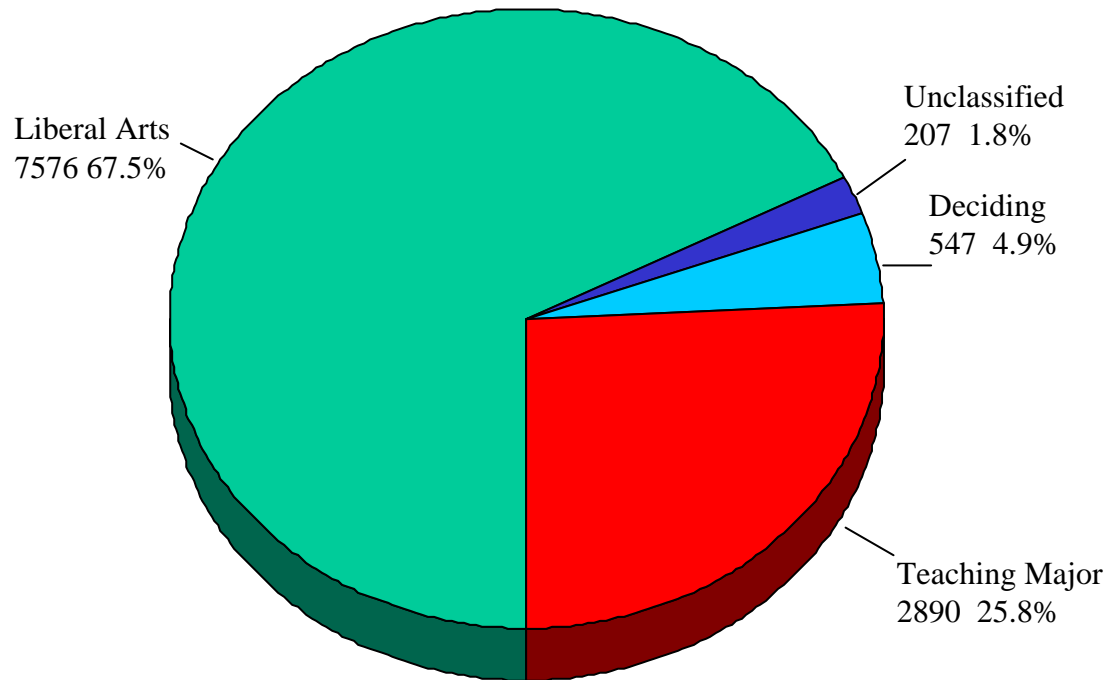


Table Based on 11,220 Undergraduates

University of Northern Iowa
Office of the Registrar
September 2004

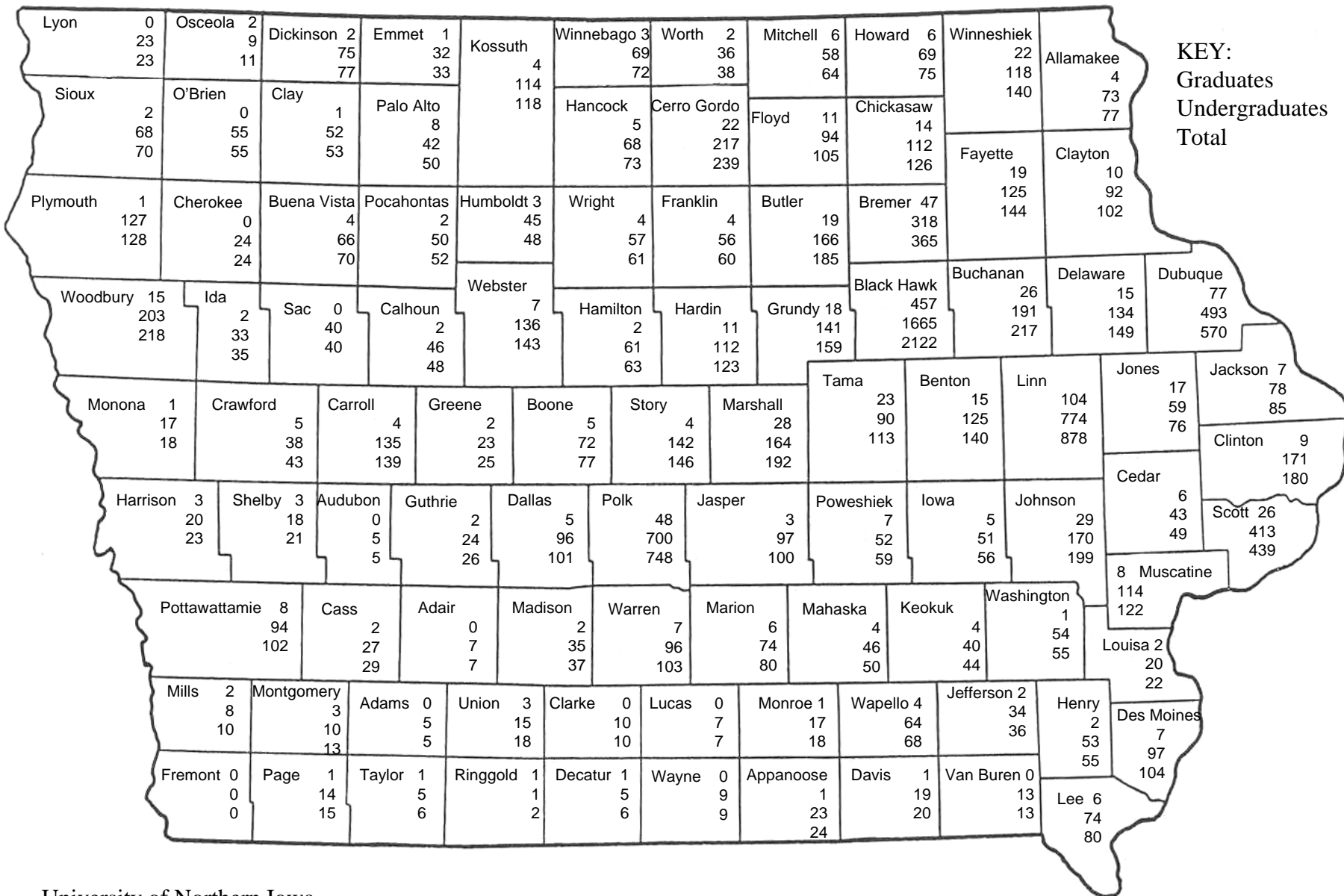
**SOURCE OF ENROLLMENT
FALL 2004**

UNDERGRADUATES	TOTAL	PERCENT OF TOTAL TRANSFER	PERCENT OF CLASSIFIED STUDENTS
Source of Transfer			
University of Iowa	128	3.6%	1.2%
Iowa State University	112	3.1%	1.0%
Iowa Four-Year Private	303	8.4%	2.8%
Iowa Two-Year Public	2558	71.3%	23.2%
Iowa Two-Year Private	51	1.4%	0.5%
Out-of-State Four-Year	243	6.8%	2.2%
Out-of-State Two-Year	165	4.6%	1.5%
Others	28	0.8%	0.3%
TOTAL	3588		32.6%
High School Source			
Iowa High School	10067		91.4%
Non-Iowa High School	804		7.3%
Unknown	142		1.3%
TOTAL	11013		100.0%

GRADUATES	TOTAL	PERCENT OF GRADUATE STUDENTS
Bachelors Degree College		
UNI	676	42.1%
Other Iowa Colleges	455	28.4%
Out-of-State Colleges	440	27.4%
Unknown	33	2.1%
TOTAL	1604	100.0%

FALL 2004 ENROLLMENT

By Admission County



KEY:
 Graduates
 Undergraduates
 Total

**ENROLLMENT BY STATE OF ORIGIN
FALL 2004**

STATES	GRADUATES			UNDERGRADUATES			TOTAL		
	M	W	T	M	W	T	M	W	T
ALABAMA	1		1				1		1
ARIZONA					3	3		3	3
ARKANSAS	1	1	2	2	2	4	3	3	6
CALIFORNIA	4	4	8	7	6	13	11	10	21
COLORADO		2	2	4	5	9	4	7	11
DIST. COLUMBIA				4	3	7	4	3	7
FLORIDA	4	4	8	7	1	8	11	5	16
GEORGIA	1	4	5		4	4	1	8	9
HAWAII	2		2	1		1	3		3
IDAHO		1	1		1	1		2	2
ILLINOIS	4	17	21	63	76	139	67	93	160
INDIANA		1	1	27	25	52	27	26	53
IOWA	413	888	1301	4466	5967	10433	4879	6855	11734
KANSAS		1	1	6	8	14	6	9	15
KENTUCKY					1	1		1	1
LOUISIANA	1	7	8		1	1	1	8	9
MAINE		1	1					1	1
MARYLAND					2	2		2	2
MASSACHUSETTS	2	1	3	1		1	3	1	4
MICHIGAN		3	3	3		3	3	3	6
MINNESOTA	4	15	19	41	51	92	45	66	111
MISSISSIPPI		1	1	1		1	1	1	2
MISSOURI		4	4	19	7	26	19	11	30
NEBRASKA	3	3	6	9	10	19	12	13	25
NEW HAMPSHIRE					1	1		1	1
NEW JERSEY				4	1	5	4	1	5
NEW MEXICO				1		1	1		1
NEW YORK	3	1	4	3	1	4	6	2	8
NORTH CAROLINA		2	2		2	2		4	4
NORTH DAKOTA		2	2	1	3	4	1	5	6
OHIO	2	2	4	1	1	2	3	3	6
OKLAHOMA				4	1	5	4	1	5
OREGON	1	6	7	1	2	3	2	8	10
PENNSYLVANIA	1	1	2				1	1	2
RHODE ISLAND				1		1	1		1
SOUTH CAROLINA	2		2				2		2
SOUTH DAKOTA				7	5	12	7	5	12
TENNESSEE	1	2	3	1		1	2	2	4
TEXAS	9	8	17	29	42	71	38	50	88
UTAH				2		2	2		2
VERMONT					1	1		1	1
VIRGINIA	2	1	3		2	2	2	3	5
WASHINGTON		2	2	2	1	3	2	3	5
WEST VIRGINIA					1	1		1	1
WISCONSIN	6	6	12	9	13	22	15	19	34
WYOMING					1	1		1	1
TOTALS	467	991	1458	4727	6251	10978	5194	7242	12436

INTERNATIONAL STUDENT REPORT -- FALL 2004

Sweden	0	0	0	0	1	0	0	0	0	0	0	0	1	0
Switzerland	1	0	0	0	0	0	0	0	1	0	0	0	2	0
Taiwan	1	0	0	4	0	6	0	1	0	0	1	0	2	11
Tanzania	0	0	0	1	0	0	0	0	1	0	0	1	1	2
Thailand	1	0	0	0	0	0	0	0	0	0	0	0	1	0
Trinidad/Tobago	1	0	0	0	0	0	0	0	0	0	0	0	1	0
Turkey	0	0	0	0	0	0	0	2	0	0	1	0	1	2
Ukraine	0	0	0	1	0	0	0	0	0	0	0	0	0	1
United Kingdom	0	0	0	0	0	1	0	0	0	0	0	0	0	1
Upper Volta	0	0	0	0	0	1	0	0	0	0	0	0	0	1
Uzbekistan	1	0	0	0	0	0	0	0	0	0	0	0	1	0
Venezuela	0	0	1	0	0	0	0	0	0	0	1	0	2	0
Vietnam	1	0	0	0	0	0	0	0	0	1	0	0	1	1
Yemen	0	0	0	0	0	1	0	0	0	0	0	0	0	1
Zaire	0	0	0	0	0	0	0	0	0	0	1	0	1	0
Zimbabwe	0	1	0	0	0	0	0	1	0	0	0	0	0	2
Total	6	1	1	6	1	9	0	4	2	1	4	1	14	22

**UNDERGRADUATE AND GRADUATE
INTERNATIONAL STUDENTS BY MAJOR
FALL 2004**

UNDERGRADUATE MAJORS 2004

COLLEGE OF BUSINESS

Accounting	5
Business	1
Economics:Bus Analysis	2
Economics:General	2
Finance	5
Management:Bus Admin	7
Management Info Systems	11
Marketing	1
Marketing:General	4
Marketing:Management	2
Marketing:Sales & Advertising	2
Mgmt:Human Resources	3
Pre-MAcc	1
TOTAL	46

COLLEGE OF EDUCATION

Leisure Services:Tourism	1
Physical Ed	6
Elementary Education	2
Early Childhood Educ	2
TOTAL	11

COLLEGE OF HUMANITIES & FINE ARTS

Art-BFA	2
Art:Studio Emphasis	2
Communication:Public Reltns	1
Communication:Elec Media	1
French	1
Modern Language/Dual	2
Music	3
Philosophy	1
Spanish	1
TESOL	1
TESOL/Spanish	1
TOTAL	16

COLLEGE OF NATURAL SCIENCES

Applied Physics	1
Biology	2
Biology:Biomedical	3
Biotechnology	5
Computer Science (BA)	3
Computer Science (BS)	5
Electro/Info Eng Tech (EIET)	6
Mathematics	4
Mathematics:Stats & Act. Science	1
Technology Mgmt	1
TOTAL	31

COLLEGE OF SOCIAL & BEHAV SCIENCES

Criminology	1
History	1
Political Science	1
Psychology	5
Sociology	1
Social Work	1
TOTAL	10

OTHER

Non-Degree	31
General Studies	1
Undecided	41
Pre-professional	1
TOTAL	74

GRADUATE MAJORS 2004

COLLEGE OF BUSINESS

MBA	8
Accounting (MAcc)	2
Pre-MBA	1
TOTAL	11

COLLEGE OF EDUCATION

C&I:Ed Tech/Ind Tech	2
C&I:Elem Educ	2
C&I:Early Childhood	2
Educ:Leadership	3
Educ: C&I	12
Educational Psychology	2
Health Education	5
Leisure, Youth & Human Svcs	7
Mental Health Counseling	1
Performance & Training Tech	1
Post-Secondary Educ:Student Affairs	1
Principalship	1
School Counseling	2
Special Ed	3
TOTAL	44

COLLEGE OF HUMANITIES & FINE ARTS

Art	1
Communication Studies	8
English	3
German	5
Music	5
Music Conducting	2
Music Performance	10
Spanish	2
Speech Pathology	1
TESOL	10
TESOL/French	2
TESOL:German	1
Women's Studies	4
TOTAL	54

COLLEGE OF NATURAL SCIENCES

Chemistry (MS)	2
Computer Science (MS)	11
DIT	8
Env. Science	4
Env. Science/Technology	1
Env. Technology	2
Science Educ	1
Technology	5
TOTAL	34

COLLEGE OF SOCIAL & BEHAV SCIENCES

Geography	4
History	1
Psychology	1
Public Policy	8
Sociology	2
TOTAL	16

OTHER

Non-degree	4
TOTAL	4

TOTAL GRADUATES 163

TOTAL UNDERGRADUATES 188

**NEW AND FORMER INTERNATIONAL STUDENTS AT UNI BY
GENDER, LEVEL OF STUDY, AND COUNTRY
FALL 2004**

COUNTRY

Albania	1	Switzerland	2
Argentina	5	Taiwan	13
Australia	1	Tanzania	3
Austria	5	Thailand	1
Bahrain	1	Trinidad/Tobago	1
Bangladesh	2	Turkey	3
Barbados	1	Ukraine	1
Belize	1	Untd Kingdom	1
Bermuda	1	Upper Volta	1
Brazil	8	Uzbekistan	1
Bulgaria	1	Venezuela	2
Canada	11	Vietnam	2
Chile	2	Yeman	1
Columbia	3	Zaire	1
Costa Rica	2	Zimbabwe	2
Croatia	3	TOTAL	351
Cyprus	2		
Denmark	4	AFRICA	
Ecuador	3	Ghana	6
Fiji	1	Kenya	9
Finland	1	Madagascar	1
France	7	Mali	2
Germany	1	Namibia	1
Ghana	6	Nigeria	3
Hong Kong	12	Rwanda	2
India	21	Sudan	1
Indonesia	9	Tanzania	3
Israel	1	Upper Volta	1
Italy	1	Zaire	1
Jamaica	1	Zimbabwe	2
Japan	34	TOTAL	32
Jordan	1		
Kazakhstan	2	ASIA	
Kenya	9	Bahrain	1
Kuwait	2	Bangladesh	2
Latvia	1	Hong Kong	12
Madagascar	1	India	21
Malaysia	3	Indonesia	9
Mali	2	Japan	34
Mexico	4	Kazakhstan	2
Mongolia	1	Malaysia	3
Namibia	1	Mongolia	1
Nepal	3	Nepal	3
Netherlands	1	PRC	15
Nigeria	3	Singapore	1
Pakistan	1	South Korea	15
Peru	16	Taiwan	13
Poland	7	Thailand	1
PRC	15	Uzbekistan	1
Romania	5	Vietnam	2
Russia	50	Yemen	1
Rwanda	2	TOTAL	137
Saudi Arabia	14		
Singapore	1	AUSTRALIA/ PACIFIC ISLANDS	
Slovakia	2	Australia	1
South Korea	15	Fiji	1
Sudan	1	TOTAL	2
Sweden	1		

**CARIBBEAN/
ATLANTIC ISLANDS**

Barbados	1
Belize	1
Jamaica	1
Trinidad/Tobago	1
TOTAL	4

EUROPE

Albania	1
Austria	5
Bulgaria	1
Croatia	3
Denmark	4
Finland	1
France	7
Germany	1
Italy	1
Latvia	1
Netherlands	1
Poland	7
Romania	5
Russia	50
Slovakia	2
Sweden	1
Switzerland	2
Ukraine	1
Untd Kingdom	1
TOTAL	95

MIDDLE EAST

Cyprus	2
Israel	1
Jordan	1
Kuwait	2
Pakistan	1
Saudia Arabia	14
Turkey	3
TOTAL	24

**NORTH/CENTRAL
AMERICA**

Bermuda	1
Canada	11
Costa Rica	2
Mexico	4
TOTAL	18

SOUTH AMERICA

Argentina	5
Brazil	8
Chile	2
Columbia	3
Ecuador	3
Peru	16
Venezuela	2
TOTAL	39

SEX

Male	160
Female	191
TOTAL	351

MALE

Undergrad	88
Grad	72
TOTAL	160

FEMALE

Undergrad	100
Grad	91
TOTAL	191

NEW OR FORMER

New	142
Former	209
TOTAL	351

LEVEL OF STUDY

Undergrad	188
Grad	163
TOTAL	351

**DISTRIBUTION OF TOTAL UNDERGRADUATE STUDENT ENROLLMENT
BY RACE/ETHNICITY, GENDER, AND RESIDENCY
FALL 2004**

Race/Ethnicity	Male		Female	
	Resident	Non-Resident	Resident	Non-Resident
White	4112	120	5592	154
African-American	75	79	125	45
Asian-American	48	1	62	3
American Indian	15	1	13	1
Hispanic-American	49	46	54	51
No Response	199	4	172	11
International Students (1)	0	88	0	100
TOTAL	4498	339	6018	365
Total Minority	187	127	254	100
	314		354	

**DISTRIBUTION OF TOTAL GRADUATE STUDENT ENROLLMENT
BY RACE/ETHNICITY, GENDER, AND RESIDENCY
FALL 2004**

Race/Ethnicity	Male		Female	
	Resident	Non-Resident	Resident	Non-Resident
White	351	31	772	69
African-American	15	11	49	26
Asian-American	6	1	4	0
American Indian	0	0	3	1
Hispanic-American	5	8	5	7
No Response	26	4	41	6
International Students (1)	0	72	0	91
TOTAL	403	127	874	200
Total Minority	26	20	61	34
	46		95	

(1) Includes all international students regardless of race/ethnicity.
Remaining categories contain American citizens, immigrants, and refugees only.

**DISTRIBUTION OF UNDERGRADUATE STUDENT ENROLLMENT
BY COLLEGE, RACE/ETHNICITY, GENDER, AND RESIDENCE
FALL 2004**

UNIVERSITY OF NORTHERN IOWA

COLLEGE	White and No Response				African-American				Asian-American				American Indian				Hispanic-American				All International Students*				Total		Grand Total
	Male		Female		Male		Female		Male		Female		Male		Female		Male		Female		Male		Female		Male	Female	
	R	NR	R	NR	R	NR	R	NR	R	NR	R	NR	R	NR	R	NR	R	NR	R	NR	R	NR	R	NR			
Business	1321	34	974	18	16	16	16	4	18	1	10	1	2	0	1	0	10	5	8	4	0	27	0	19	1,450	1,055	2,505
Education	471	18	1628	38	7	10	18	3	2	0	8	1	1	0	0	1	4	4	11	9	0	4	0	7	521	1,724	2,245
Humanities	588	22	1017	36	9	15	20	12	8	0	21	0	5	0	4	0	7	13	14	12	0	4	0	12	671	1,148	1,819
Nat. Sciences	929	18	485	29	9	14	12	10	8	0	3	1	4	1	0	0	7	13	2	8	0	22	0	9	1,025	559	1,584
Soc. Sciences	637	17	1040	17	17	7	42	13	11	0	14	0	2	0	8	0	12	8	10	15	0	6	0	4	717	1,163	1,880
No Sp. Coll.	365	15	620	27	17	17	17	3	1	0	6	0	1	0	0	0	9	3	9	3	0	25	0	49	453	734	1,187
Gender Subtotal	4311	124	5,764	165	75	79	125	45	48	1	62	3	15	1	13	1	49	46	54	51	0	88	0	100	4,837	6,383	11,220
Gender Total	4,435		5,929		154		170		49		65		16		14		95		105		88		100				
Grand Total	10,364				324				114				30				200				188				4,837	6,383	11,220

* Includes all international students; other categories include American citizens, immigrants, asylees, and refugees only.

University of Northern Iowa
Office of the Registrar
September 2004

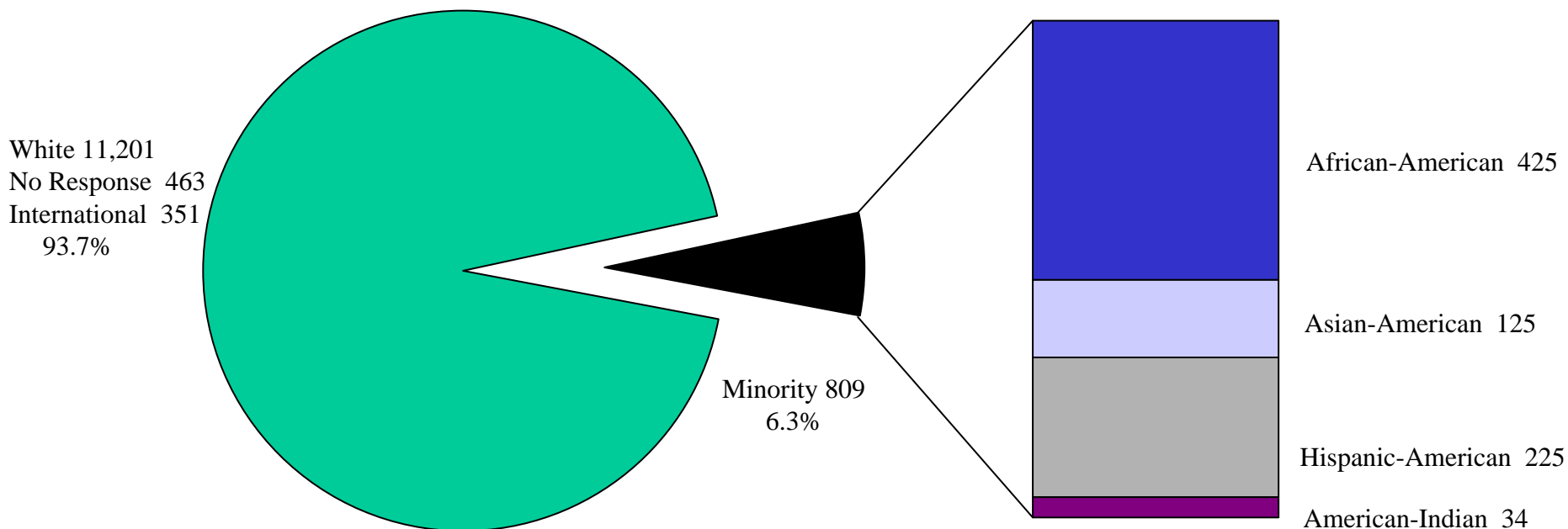
**DISTRIBUTION OF GRADUATE STUDENT ENROLLMENT
BY COLLEGE, RACE/ETHNICITY, GENDER, AND RESIDENCE
FALL 2004**

UNIVERSITY OF NORTHERN IOWA

COLLEGE	White and No Response				African-American				Asian-American				American Indian				Hispanic-American				All International Students*				Total		Grand Total
	Male		Female		Male		Female		Male		Female		Male		Female		Male		Female		Male	Female					
	R	NR	R	NR	R	NR	R	NR	R	NR	R	NR	R	NR	R	NR	R	NR	R	NR							
Business	45	1	22	0	1	1	1	0	3	0	0	0	0	0	0	0	1	0	0	7	0	4	58	28	86		
Education	146	9	434	18	11	4	29	6	1	0	1	0	0	0	2	0	2	4	0	4	0	15	0	29	192	523	715
Humanities	39	5	137	22	0	3	4	9	2	0	1	0	0	0	0	0	1	1	1	1	0	17	0	37	68	212	280
Nat. Sciences	43	5	36	2	1	2	2	4	0	0	0	0	0	0	0	0	0	0	0	0	0	25	0	9	76	53	129
Soc. Sciences	38	7	58	17	1	0	8	4	0	0	0	0	0	0	0	0	1	3	0	1	0	5	0	11	55	99	154
No Sp. Coll.	66	8	126	16	1	1	5	3	1	0	2	0	0	0	1	1	1	0	4	0	0	3	0	1	81	159	240
Gender Subtotal	377	35	813	75	15	11	49	26	7	0	4	0	0	3	1	5	8	6	6	0	72	0	91	530	1,074	1,604	
Gender Total	412		888		26		75		7		4		0		4		13		12		72		91				
Grand Total	1,300				101				11				4				25				163				530	1,074	1,604

* Includes all international students; other categories include American citizens, immigrants, asylees, and refugees only.

Combined Undergraduate and Graduate Minority Student Enrollment Fall 2004

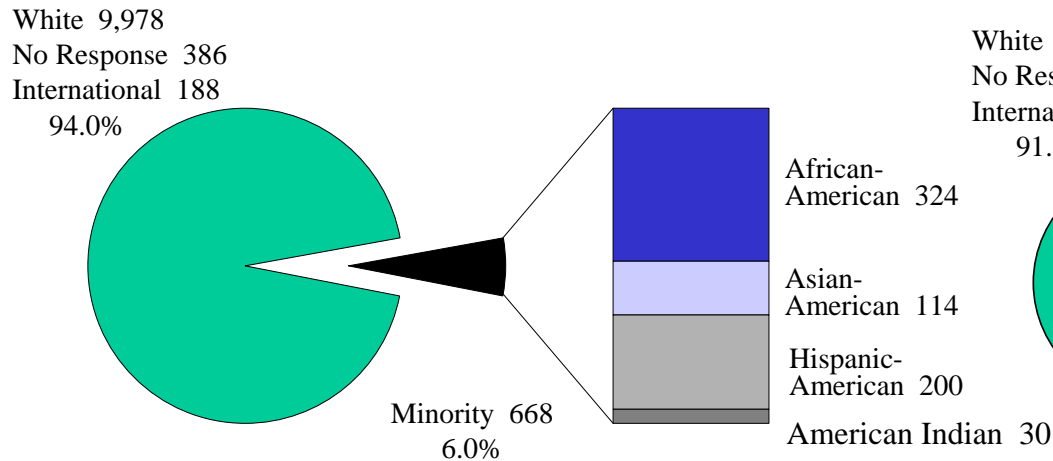


Based on total enrollment of 12,824

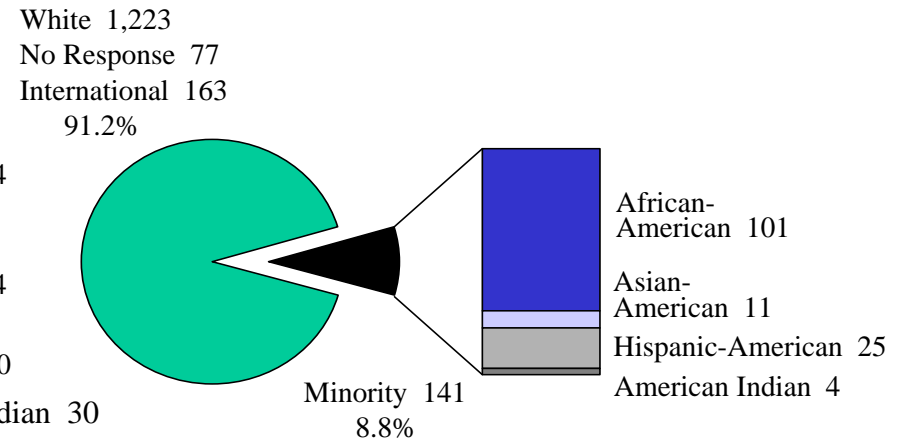
University of Northern Iowa
Office of the Registrar
September 2004

Undergraduate and Graduate Minority Student Enrollment Fall 2004

UNDERGRADUATE



GRADUATE



Based on Undergraduate 11,220
Graduate 1,604

University of Northern Iowa
Office of the Registrar
September 2004

MINORITY STUDENT ENROLLMENT
Fall Semesters 1997-2004

UNDERGRADUATE								
Race/Ethnicity	Fall 1997	Fall 1998	Fall 1999	Fall 2000	Fall 2001	Fall 2002	Fall 2003	Fall 2004
African American	198	222	242	283	296	319	323	324
Native American	24	23	28	31	27	25	28	30
Asian American	132	126	128	124	127	109	130	114
Hispanic	80	86	90	119	161	195	187	200
Total	434	457	488	557	611	648	668	668

GRADUATE								
Race/Ethnicity	Fall 1997	Fall 1998	Fall 1999	Fall 2000	Fall 2001	Fall 2002	Fall 2003	Fall 2004
African American	58	61	66	73	74	78	103	101
Native American	3	2	5	4	3	6	4	4
Asian American	17	13	13	16	15	19	11	11
Hispanic	14	6	15	16	19	12	21	25
Total	92	82	99	109	111	115	139	141

COMBINED TOTALS UNDERGRADUATE & GRADUATE								
Race/Ethnicity	Fall 1997	Fall 1998	Fall 1999	Fall 2000	Fall 2001	Fall 2002	Fall 2003	Fall 2004
African American	256	283	308	356	370	397	426	425
Native American	27	25	33	35	30	31	32	34
Asian American	149	139	141	140	142	128	141	125
Hispanic	94	92	105	135	180	207	208	225
Total	526	539	587	666	722	763	807	809
	4.0%	4.0%	4.3%	4.8%	5.1%	5.5%	6.0%	6.3%

MINORITY ENROLLMENT AS A PERCENTAGE OF TOTAL ENROLLMENT								
	Fall 1997	Fall 1998	Fall 1999	Fall 2000	Fall 2001	Fall 2002	Fall 2003	Fall 2004
Total Enrollment	13108	13329	13553	13774	14070	13926	13441	12824
Minority Enrollment	526	539	587	666	722	763	807	809
% of Total Enrollment	4.0%	4.0%	4.3%	4.8%	5.1%	5.5%	6.0%	6.3%
Difference	-21	13	48	79	56	41	44	2
% Incr. or Decr.	-3.8%	2.5%	8.9%	13.5%	8.4%	5.7%	5.8%	0.2%

COMPARATIVE AVERAGE AGES - FALL SEMESTERS 1990-2004

ALL	Graduates			Undergraduates			Total		
	Male	Female	Total	Male	Female	Total	Male	Female	Total
1990	34.0	33.7	33.8	21.8	22.0	21.9	22.8	23.2	23.0
1991	34.4	33.9	34.1	21.8	22.0	21.9	22.8	23.2	23.0
1992	34.5	33.5	33.9	21.9	22.1	22.0	22.9	23.2	23.1
1993	33.7	33.4	33.5	21.9	21.9	21.9	22.9	23.1	23.0
1994	33.2	33.5	33.4	21.9	21.8	21.8	23.0	23.1	23.1
1995	33.0	34.0	33.6	21.7	21.7	21.7	22.8	23.1	23.0
1996	33.6	33.5	33.5	21.7	21.5	21.6	22.9	22.9	22.9
1997	33.6	33.3	33.4	21.6	21.4	21.5	22.7	22.9	22.8
1998	33.3	34.4	34.1	21.7	21.3	21.5	22.7	23.1	22.9
1999	34.1	33.7	33.8	21.6	21.3	21.4	22.8	22.9	22.9
2000	33.3	33.6	33.5	21.5	21.2	21.3	22.6	22.8	22.7
2001	32.4	33.1	32.9	21.2	20.9	21.0	22.2	22.5	22.4
2002	33.2	33.5	33.4	21.7	21.4	21.5	22.8	23.0	22.9
2003	33.7	33.7	33.7	22.1	21.6	21.8	23.3	23.3	23.3
2004	32.2	32.8	32.6	21.8	21.3	21.5	22.8	22.9	22.9

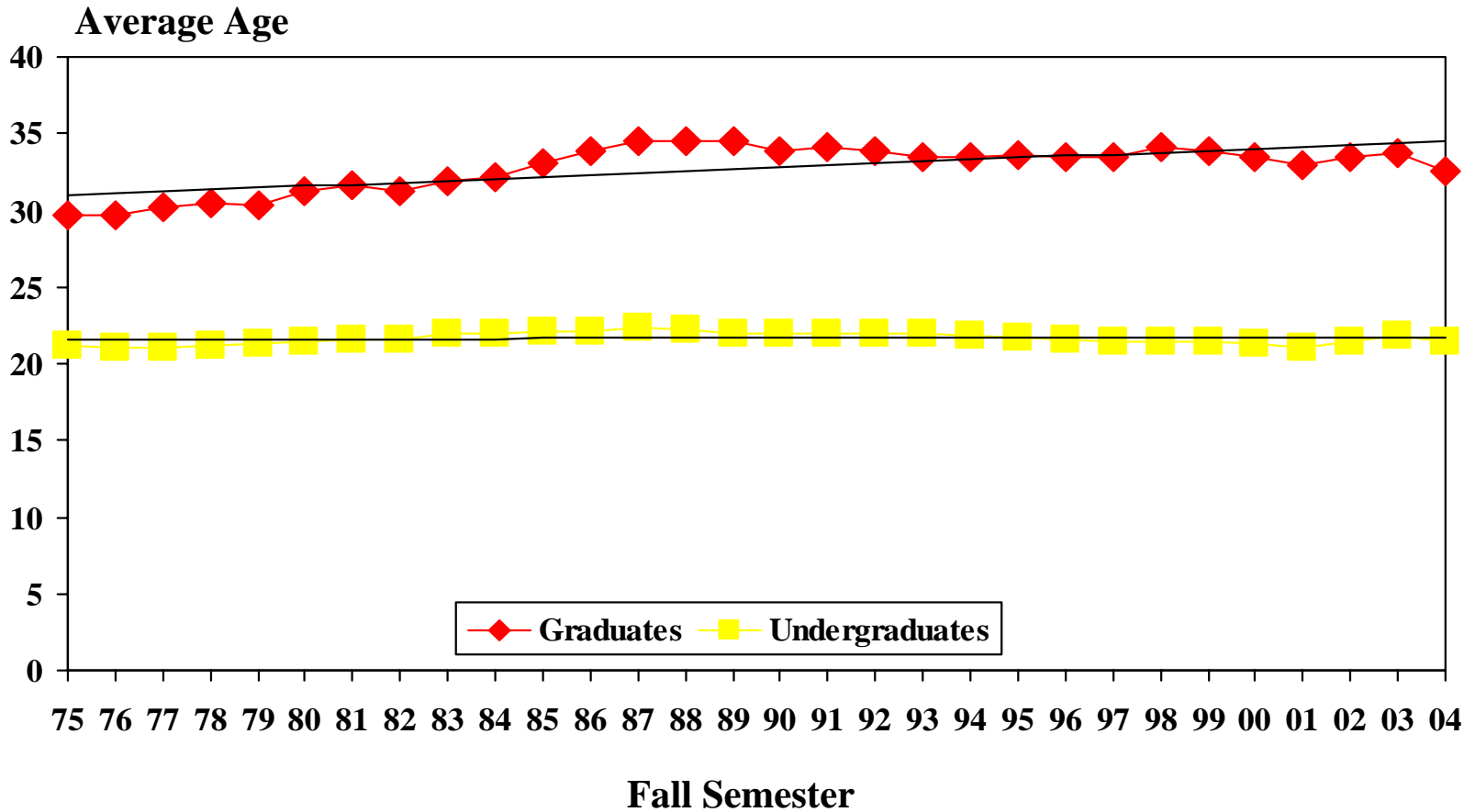
Full-Time	Graduates (9 sem hours or more)			Undergraduates (12 sem hours or more)			Total		
	Male	Female	Total	Male	Female	Total	Male	Female	Total
1990	29.9	29.6	29.7	21.0	20.9	20.9	21.4	21.3	21.3
1991	30.5	29.0	29.6	21.0	20.8	20.9	21.4	21.2	21.3
1992	29.4	28.9	29.1	21.2	21.0	21.1	21.5	21.3	21.4
1993	28.3	28.2	28.2	21.3	21.0	21.1	21.6	21.3	21.4
1994	28.5	28.5	28.5	21.2	20.9	21.0	21.6	21.3	21.4
1995	28.4	28.7	28.5	21.1	20.8	20.9	21.4	21.1	21.3
1996	28.7	28.3	28.5	20.9	20.7	20.8	21.3	21.1	21.2
1997	29.1	27.7	28.2	21.0	20.6	20.7	21.3	20.9	21.1
1998	29.0	28.3	28.5	21.0	20.5	20.7	21.3	20.9	21.1
1999	29.7	27.9	28.5	20.9	20.5	20.7	21.2	20.9	21.0
2000	28.6	27.7	28.0	20.8	20.5	20.6	21.1	20.9	21.0
2001	27.5	27.7	27.6	20.6	20.2	20.4	20.9	20.6	20.7
2002	27.8	27.9	27.9	21.0	20.6	20.7	21.3	21.0	21.1
2003	27.6	27.7	27.7	21.4	21.0	21.2	21.7	21.4	21.5
2004	28.0	27.7	27.8	21.2	20.7	20.9	21.5	21.2	21.3

Part-Time	Graduates			Undergraduates			Total		
	Male	Female	Total	Male	Female	Total	Male	Female	Total
1990	36.4	36.2	36.3	27.4	29.5	28.6	30.2	31.7	31.1
1991	36.8	36.9	36.8	27.4	29.6	28.7	30.3	32.0	31.3
1992	37.8	36.0	36.7	26.9	28.6	27.9	30.4	31.0	30.8
1993	37.6	36.6	37.0	26.6	28.8	27.9	30.3	31.8	31.2
1994	36.8	36.9	36.8	26.4	28.3	27.5	29.9	31.6	30.9
1995	36.0	36.6	36.4	26.4	29.1	27.9	29.9	32.4	31.4
1996	36.9	36.2	36.5	27.5	28.1	27.8	30.6	31.6	31.2
1997	36.6	36.1	36.2	26.5	27.8	27.3	30.0	31.7	31.0
1998	35.9	37.0	36.7	26.8	28.6	27.7	29.9	33.1	31.8
1999	36.4	36.8	36.7	27.5	28.3	27.9	30.9	32.4	31.8
2000	36.0	36.7	36.5	27.0	28.0	27.6	30.4	32.4	31.6
2001	35.3	36.1	35.8	26.0	27.4	26.8	29.6	31.7	30.8
2002	36.0	36.3	36.2	27.4	27.8	27.6	30.6	31.9	31.4
2003	37.0	36.7	36.8	27.2	27.2	27.2	30.9	32.1	31.6
2004	35.7	36.3	36.1	26.4	26.1	26.2	29.5	31.1	30.5

Average Age Trends

All Students

Fall Semesters 1975-2004



**ENROLLMENT OF UNI MARRIED STUDENTS OR MARRIED/SINGLE
STUDENTS WITH DEPENDENTS
FALL SEMESTER 2004**

	MARRIED W/ NO DEPENDENTS	% ENROLLMENT	SINGLE W/ DEPENDENTS	% ENROLLMENT	MARRIED W/ DEPENDENTS	% ENROLLMENT
UG	257	2.3	194	1.7	211	1.9
GRADS	227	14.1	63	3.9	225	14.0

TOTAL	484	3.8	257	2.0	436	3.5

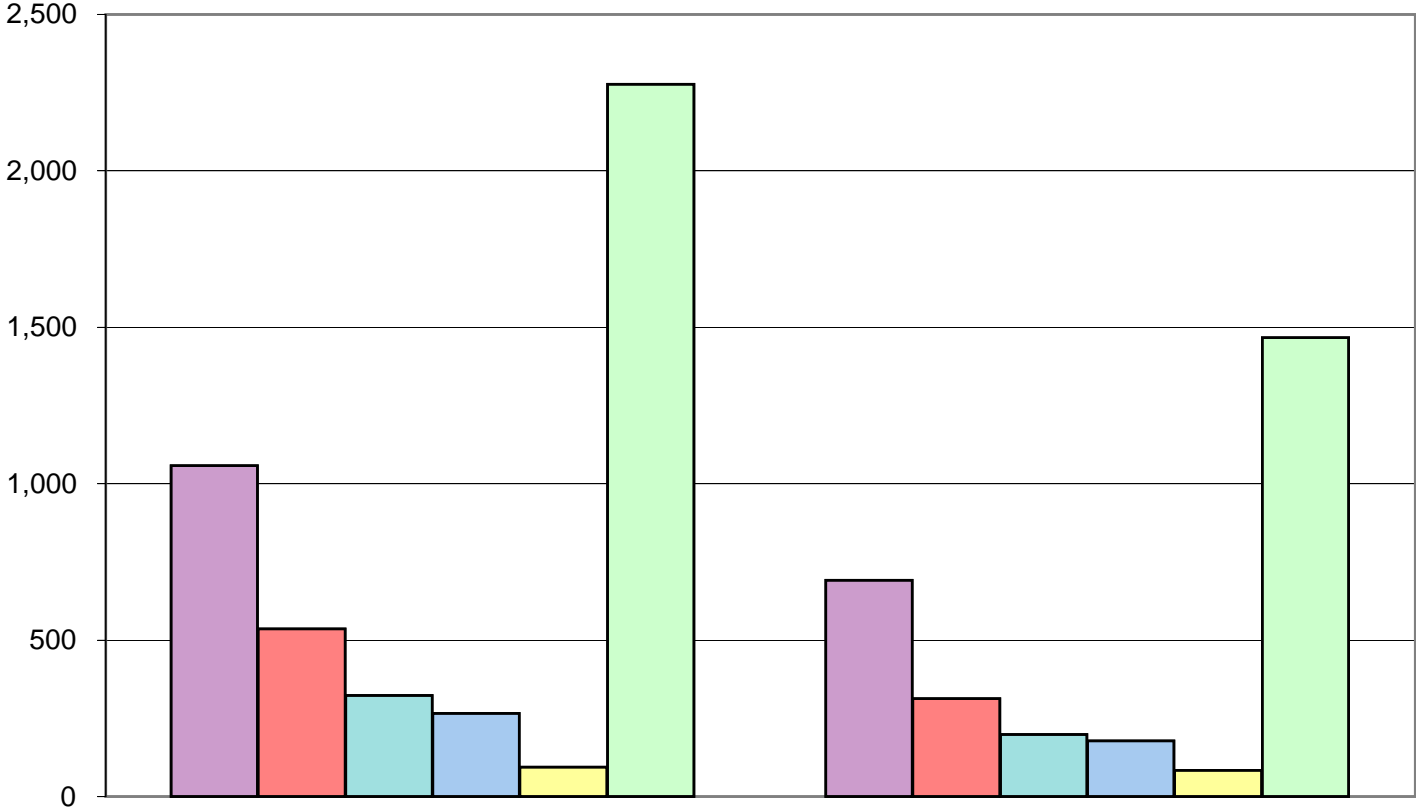
**University of Northern Iowa
Students with Disabilities
Fall 1997 - 2004**

Category	Sub-Category	1997	1998	1999	2000	2001	2002	2003	2004
Vision, Hearing, and Speech Disabilities									
Visual Disabilities									
	Blind	2	1	1	1	0	1	0	2
	Other Visual Disabilities	9	4	6	11	11	7	11	7
Hearing Disabilities									
	Deaf	2	3	2	4	3	3	5	6
	Other Hearing Disabilities	16	11	8	12	12	8	10	8
	Deaf-Blind	0	0	0	0	0	0	0	0
	Speech Disabilities	0	0	0	0	1	0	0	0
Subtotal		29	19	17	28	27	19	26	23
Mobility Disabilities									
	Wheelchair users	11	6	3	7	7	6	7	7
	Canes, Braces, and Crutches	3	2	1	4	1	1	1	2
	Other Assistive Devices	5	2	1	1	1	3	4	2
	No Assistive Devices	31	26	25	19	14	4	3	6
Subtotal		50	36	30	31	23	14	15	17
Health Disabilities									
	Allergic, Endocrine, and Metabolic	17	10	16	14	11	3	3	1
	Blood, Cardiac, and Circulatory	7	3	3	9	8	4	5	2
	Respiratory Disabilities	10	8	10	6	8	0	0	0
	Digestive Disabilities	2	1	0	1	2	1	1	1
	Acquired Brain Injury	5	4	5	5	4	5	5	4
	Other Health Conditions	41	31	19	27	26	5	9	6
Subtotal		82	57	53	62	59	18	23	14
Psychiatric Disabilities									
	Psychotic Disabilities	1	4	2	5	2	0	1	1
	Neurotic Disabilities	34	16	32	20	23	11	11	16
	Substance Abuse								
	Alcohol Related	5	3	2	0	5			
	Other Drug Related	2	0	1	1	0			
	Other Psychiatric	3	3	6	4	0		3	0
Subtotal		45	26	43	30	30	11	15	17
Learning Disabilities									
	Attention Deficit Disorder	8	17	21	20	19	16	25	26
	Learning Disabilities	30	32	45	51	47	44	62	59
Subtotal		38	49	66	71	66	60	87	85
Grand Total		244	187	209	222	205	122	166	156

University of Northern Iowa
Disability Services/Counseling Center
University Health Services
September 2004

UNI Residence Hall Occupancy Fall 2004

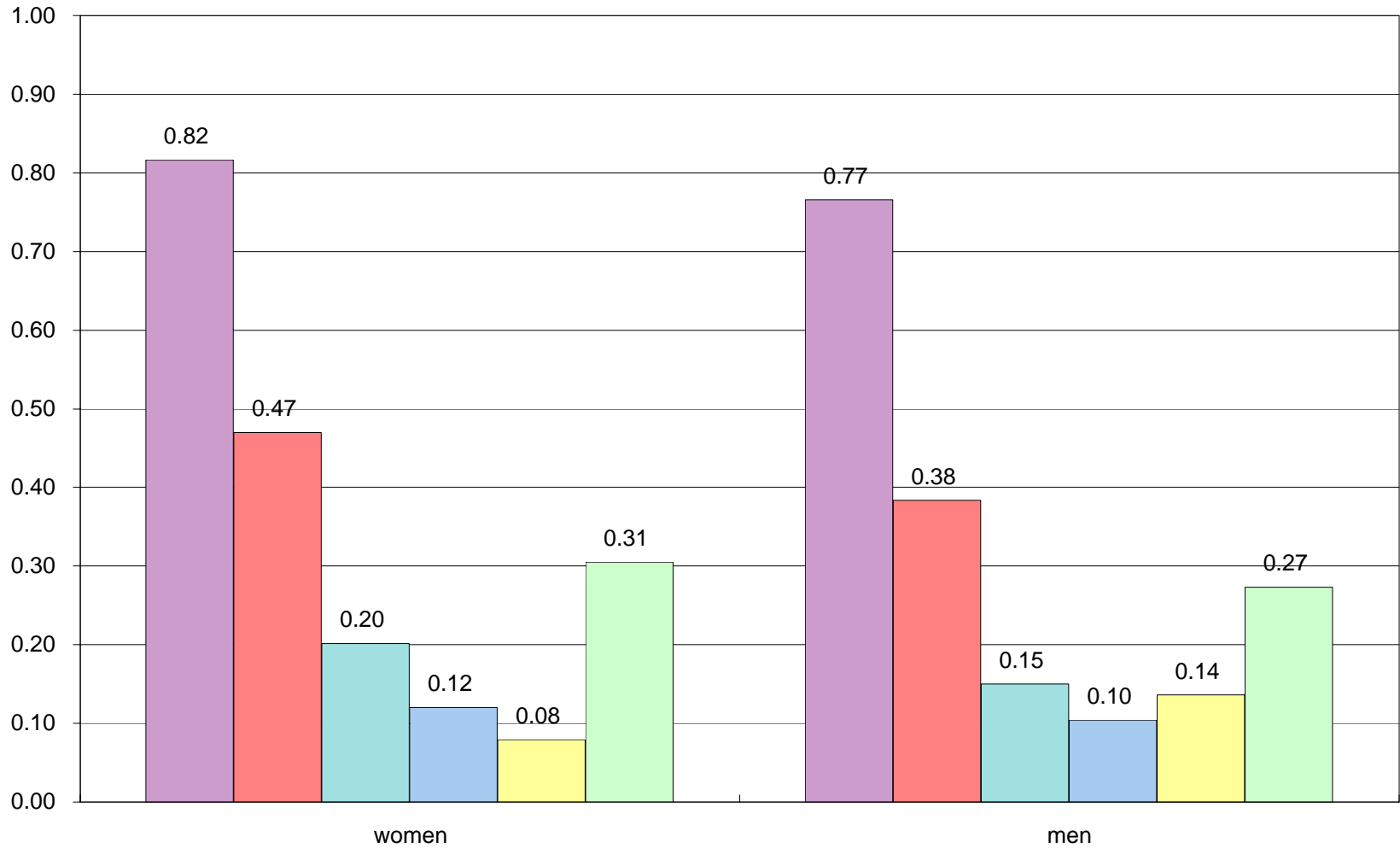
1989 - 4672
1990 - 5071
1991 - 4976
1992 - 4532
1993 - 4437
1994 - 4539
1995 - 4603
1996 - 4645
1997 - 4519
1998 - 4457
1999 - 4492
2000 - 4616
2001 - 4613
2002 - 4121
2003 - 3818
2004 - 3742



	Women	Men
Freshman	1,057	692
Sophomores	535	314
Juniors	323	198
Seniors	266	179
Unclassified & Graduates	95	83
Total	2,276	1,466

PERCENTAGE OF TOTAL ENROLLMENT IN HALLS
FALL 2004

Percent

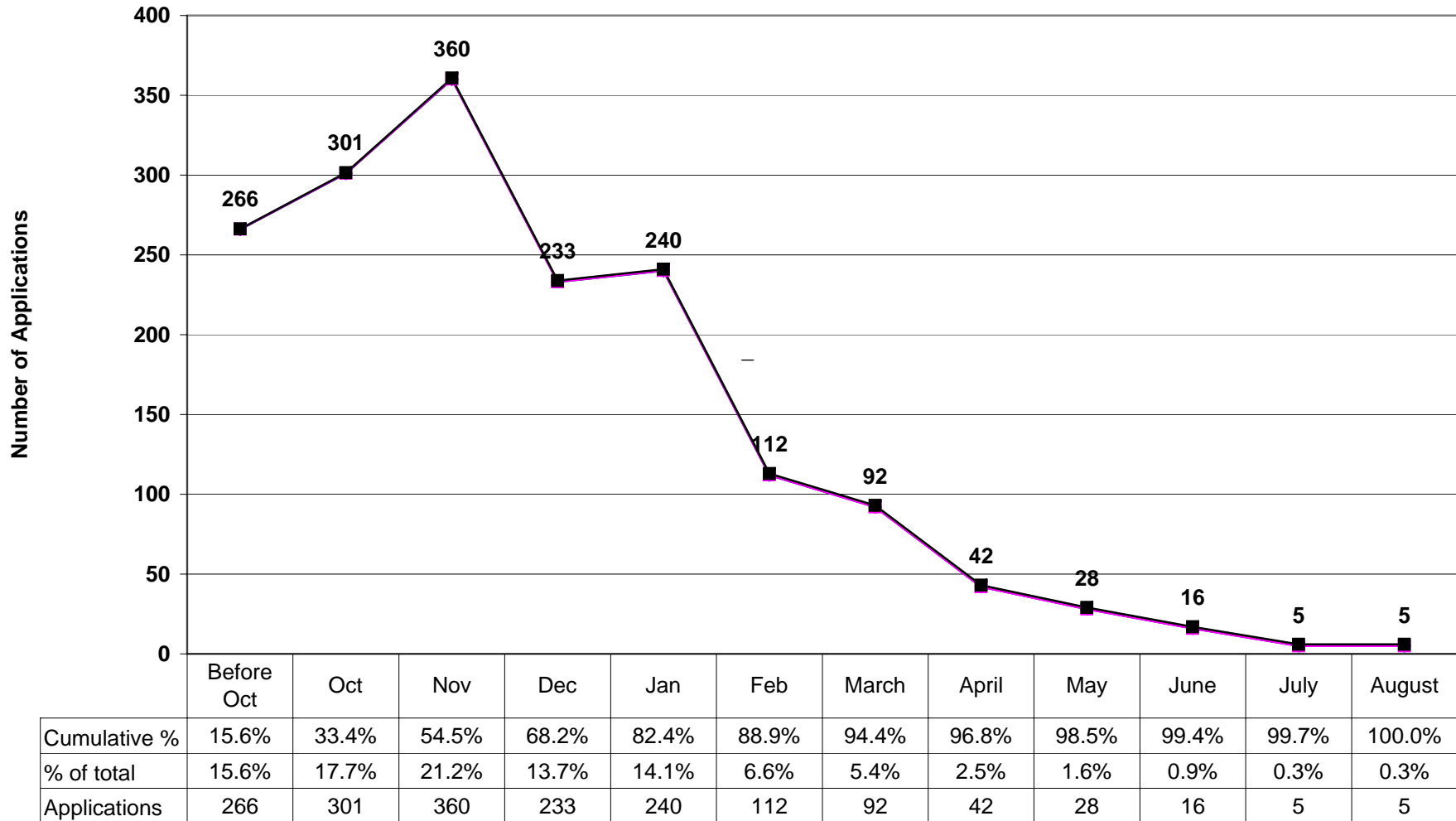


FR. SO. JR. SR. OTHERS TOT.

Section II: New Students Entering UNI Fall Semester 2004

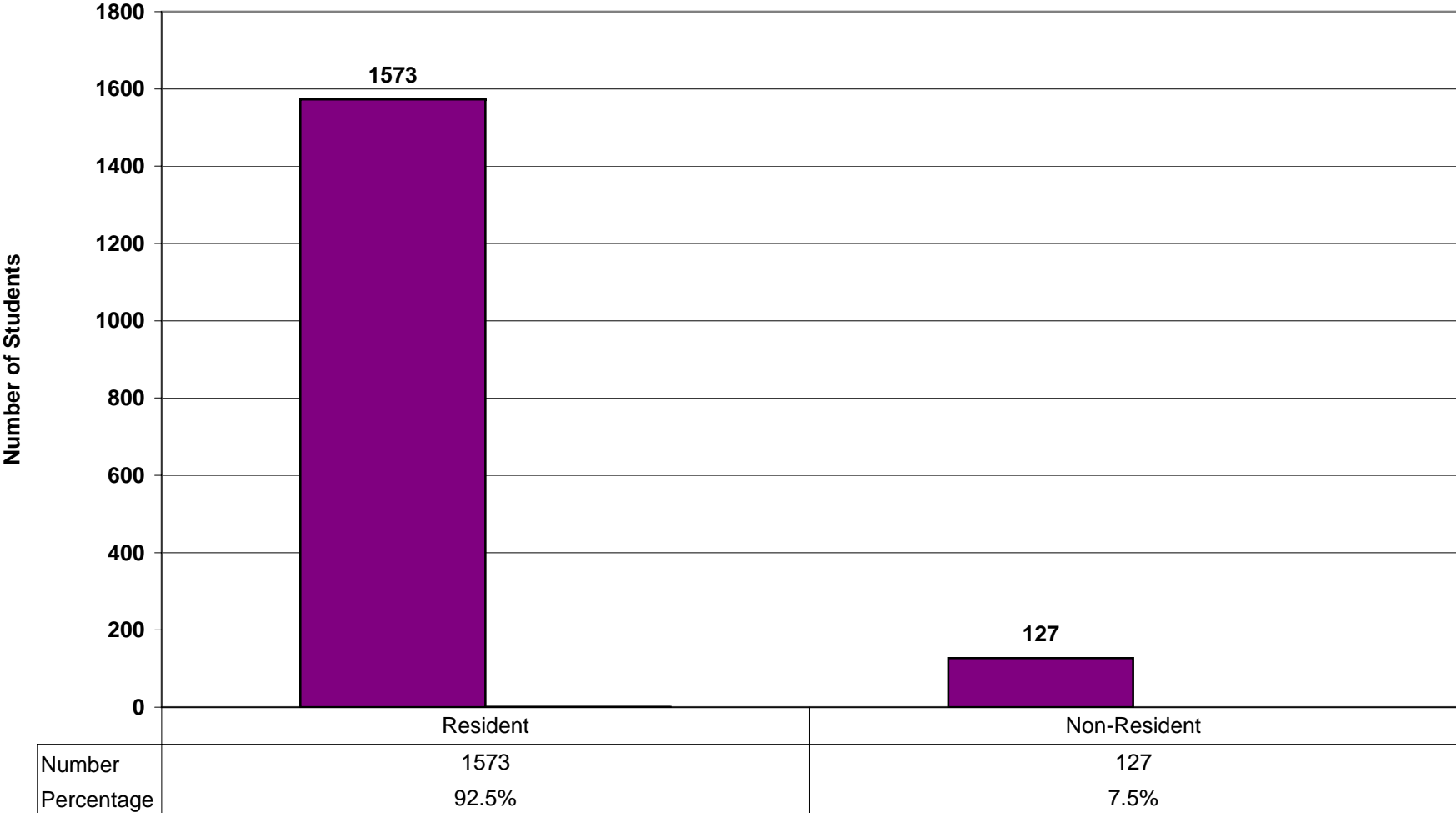
Part A. Freshmen Direct From High School

**Fall 2004
Distribution by Month of Application
Enrolled Freshmen New From High School**



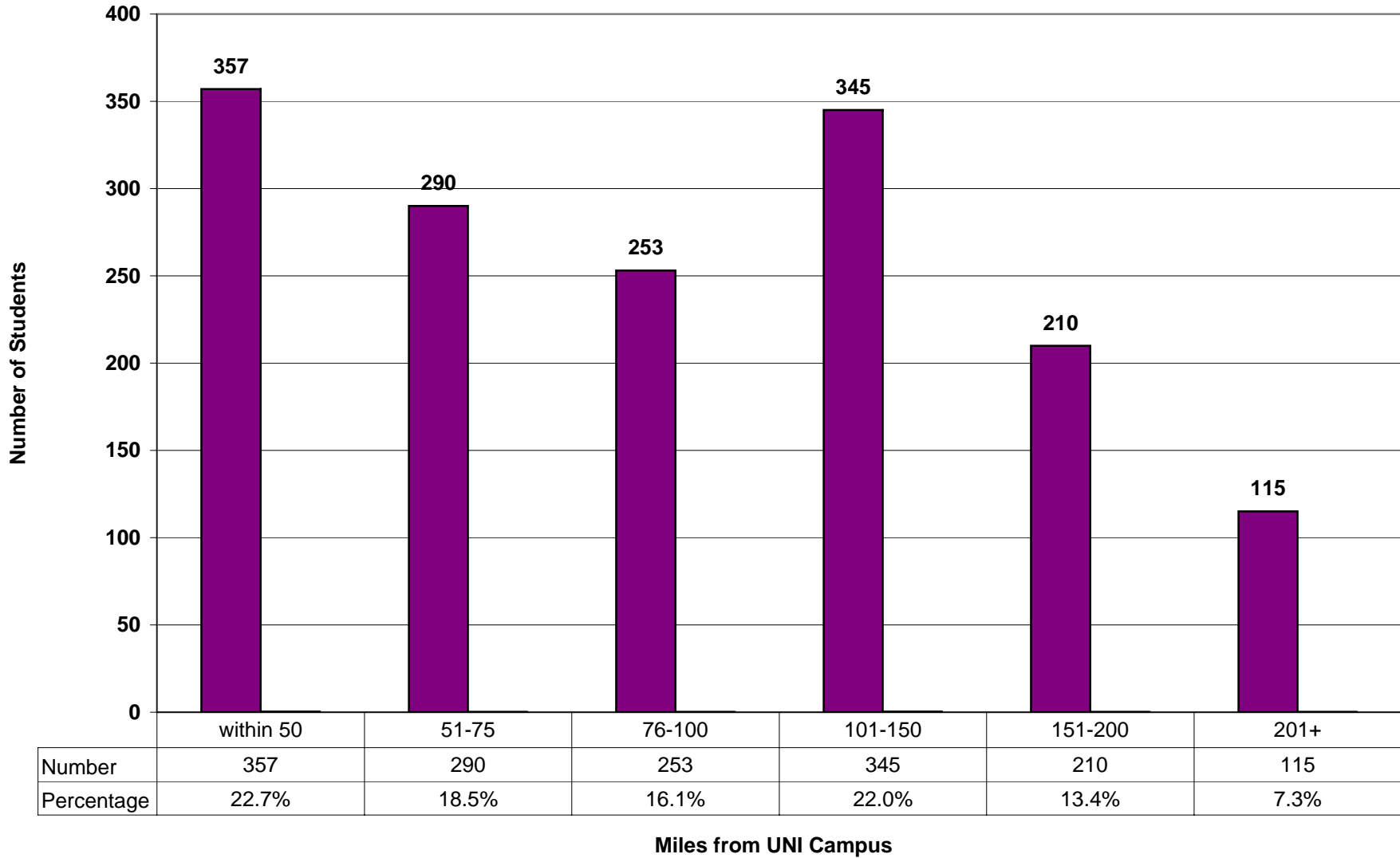
N=1700

**Fall 2004
Distribution By Residency
Enrolled Freshmen New From High School**



N=1700

Fall 2004
Distribution by Miles from UNI Campus
Enrolled Freshmen New from Iowa High Schools



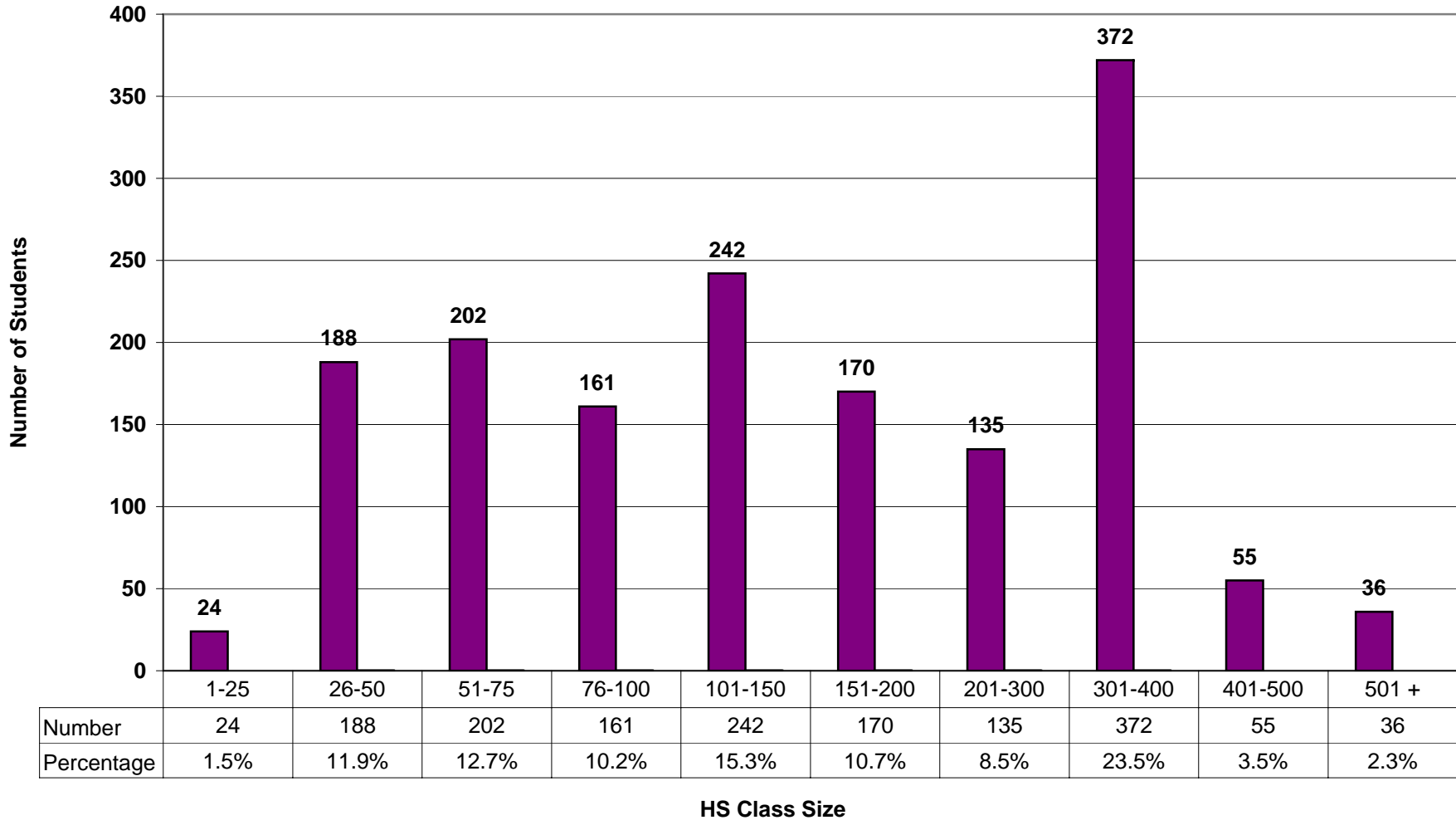
N=1570

**Fall 2004
New Enrolled Freshmen
By County and ACT Zones**

Northeast: 46.5%	699	Northwest: 18.2%	274	Central: 18.3%	275	Southeast: 13.6%	205	Southwest: 3.3%	50
Allamakee	12	Buena Vista	10	Boone	14	Appanoose	5	Adair	1
Benton	16	Calhoun	6	Dallas	10	Cedar	11	Adams	0
Black Hawk	148	Carroll	22	Jasper	20	Clinton	22	Audubon	1
Bremer	48	Cherokee	6	Madison	7	Davis	1	Cass	6
Buchanan	14	Clay	14	Marion	9	Des Moines	8	Clarke	4
Butler	23	Crawford	11	Marshall	36	Henry	9	Decatur	2
Cerro Gordo	22	Dickinson	7	Polk	120	Iowa	7	Fremont	0
Chickasaw	16	Emmet	3	Story	42	Jefferson	3	Guthrie	4
Clayton	15	Greene	5	Warren	17	Johnson	22	Harrison	7
Delaware	16	Hamilton	5			Keokuk	9	Mills	2
Dubuque	76	Hancock	10			Lee	10	Montgomery	0
Fayette	17	Humboldt	5			Louisa	2	Page	2
Floyd	15	Ida	8			Lucas	0	Pottawattamie	18
Franklin	8	Kossuth	22			Mahaska	2	Ringgold	0
Grundy	25	Lyon	2			Monroe	5	Shelby	0
Hardin	5	Monoma	5			Muscatine	21	Taylor	0
Howard	7	O'Brien	7			Poweshiek	5	Union	3
Jackson	14	Osceola	3			Scott	53		
Jones	13	Palo Alto	5			Van Buren	1		
Linn	138	Plymouth	20			Wapello	5		
Mitchell	13	Pocahontas	12			Washington	2		
Tama	17	Sac	6			Wayne	2		
Winneshiek	19	Sioux	10						
Worth	2	Webster	8						
		Winnebago	13						
		Woodbury	42						
		Wright	7						

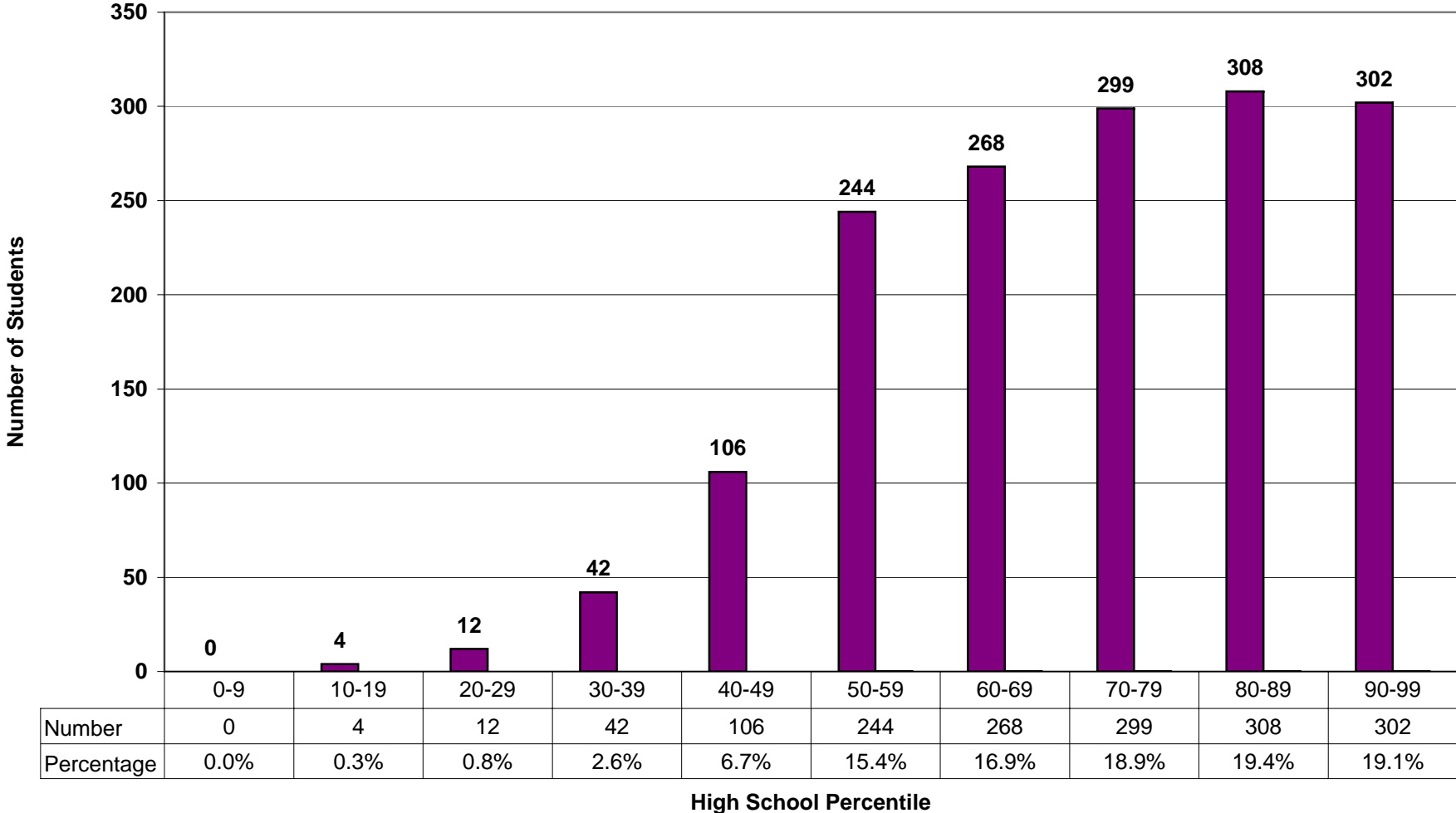
Metropolitan Counties

**Fall 2004
Distribution by HS Class Size
Enrolled Freshmen New From High School**



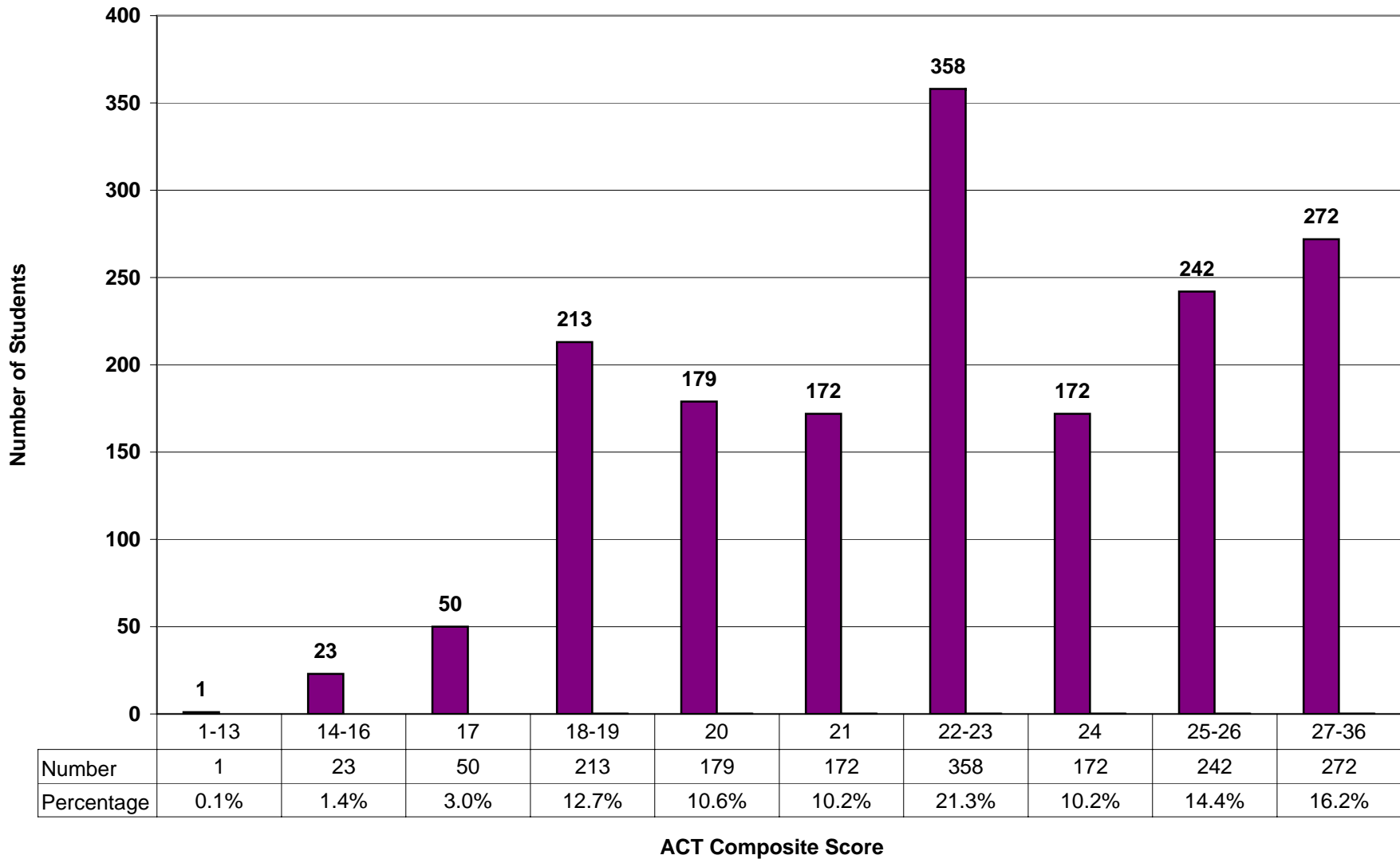
N=1585

**Fall 2004
Distribution by Percentile Rank
Enrolled Freshmen New From High School**



N=1585

**Fall 2004
Distribution By ACT Composite Score
Enrolled Freshmen New From High School**



N=1682

**ACT Composite Scores for New Freshmen Students
Entering UNI Expressed by Quartile Range
Fall Terms 1992-2004**

	Lower		Upper
	Q1	Q2 + Q3	Q4
1992	20.86	20.87-25.68	25.69
1993	20.99	21.0-25.82	25.83
1994	21.08	21.09-25.87	25.88
1995	21.03	21.04-25.75	25.76
1996	21.25	21.26-26.04	26.05
1997	21.09	21.10-26.03	26.04
1998	20.24	20.25-26.14	26.15
1999	20.95	20.96-25.87	25.88
2000	20.00	20.01-25.74	25.75
2002	20.00	20.01-24.99	25.00
2003	20.00	20.01-24.99	25.00
2004	20.00	20.01-25.00	25.01

**Comparison of ACT Composite Score
for Freshmen Students Entering Fall Term
in Selected Years Between 1960-2004**

	*1960	1979	1986	1987	1988	1989	1990	1991	1992	1993	1994	1995	1996	1997	1998	1999	2000	2001	2002	2003	2004
Mean Composite Score	22.0	20.6	21.3	22.1	21.8	21.8	21.6	23.1	22.8	22.9	23.0	23.1	23.0	23.2	23.6	23.3	23.0	23.0	22.8	22.9	22.9
Composite Score <17	6.7%	20.5%	13.4%	10.8%	10.8%	10.6%	11.1%	4.5%	4.0%	3.1%	1.4%	1.9%	1.9%	1.6%	1.7%	1.2%	1.9%	2.1%	2.7%	2.1%	1.4%
Composite Score >=21	63.7%	51.3%	59.8%	65.6%	65.6%	63.3%	61.5%	76.1%	73.6%	73.6%	75.0%	76.0%	75.3%	77.5%	75.8%	77.5%	74.5%	75.0%	72.1%	74.3%	72.3%

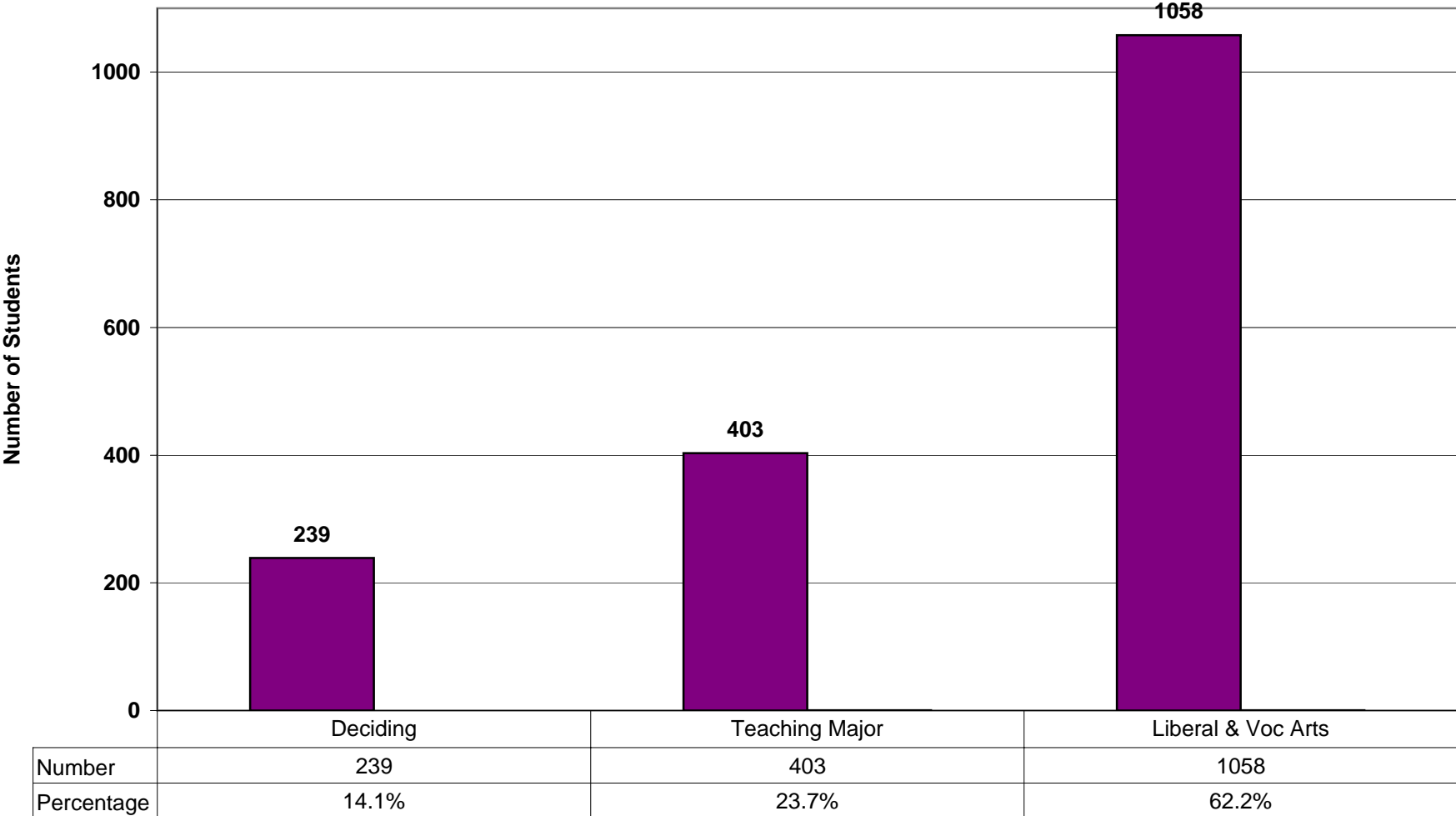
* The first year that ACT was required of freshmen entering UNI.
Note: Enhanced ACT beginning with 1990.

**Percentage Distribution by ACT Composite Score and High School Class Rank
for Students New from High School Entering Fall 1978 through Fall 2004***

	1978 N=1863	1979 N=1899	1980 N=1892	1981 N=1978	1982 N=1846	1983 N=1769	1984 N=1702	1985 N=1923	1986 N=1876	1987 N=1802	1988 N=1874	1989 N=1986	1990 N=2062
Top 10% Rank ACT >=27	6.3%	6.5%	5.8%	5.4%	6.2%	7.3%	6.8%	6.0%	8.8%	7.6%	6.5%	7.5%	10.3%
Top 30% Rank ACT >=24	24.0%	24.0%	21.8%	23.2%	23.1%	24.1%	23.7%	25.0%	31.7%	29.3%	26.5%	27.0%	35.6%
Top 50% Rank ACT >=21	46.3%	46.7%	45.1%	46.7%	46.1%	47.9%	48.6%	53.1%	60.8%	61.9%	57.4%	57.5%	71.3%
Top 50% Rank ACT <=20	30.6%	33.8%	33.6%	30.9%	30.0%	31.4%	32.8%	28.1%	29.1%	32.0%	32.1%	34.1%	20.7%
Lowest 50% Rank ACT >=21	5.4%	4.4%	3.9%	4.9%	5.5%	5.5%	6.0%	6.6%	4.8%	2.9%	5.9%	3.9%	4.7%
Lowest 50% Rank ACT <=20	17.7%	15.1%	17.5%	17.4%	18.3%	15.2%	12.6%	12.2%	5.3%	3.2%	4.6%	4.4%	3.2%
	1991 N=1971	1992 N=1683	1993 N=1803	1994 N=1821	1995 N=1951	1996 N=1926	1997 N=1858	1998 N=1924	1999 N=2031	2000 N=2096	2002 N=1708	2003 N=1640	2004 N=1585
Top 10% Rank ACT >=27	8.8%	8.1%	8.4%	8.1%	8.0%	8.8%	8.3%	9.4%	8.8%	8.4%	7.1%	8.6%	8.6%
Top 30% Rank ACT >=24	33.1%	32.0%	33.9%	31.9%	32.6%	33.1%	34.7%	34.3%	33.8%	31.7%	29.3%	31.5%	30.7%
Top 50% Rank ACT >=21	69.8%	69.1%	71.8%	72.4%	70.3%	72.3%	70.1%	70.9%	68.5%	69.4%	66.1%	67.7%	65.2%
Top 50% Rank ACT <=20	23.4%	23.6%	23.4%	21.7%	22.9%	20.4%	21.9%	20.7%	23.2%	22.1%	23.8%	22.1%	24.5%
Lowest 50% Rank ACT >=21	3.8%	4.2%	3.1%	4.2%	5.1%	5.8%	6.2%	6.6%	6.3%	5.6%	6.9%	7.7%	7.0%
Lowest 50% Rank ACT <=20	3.0%	3.1%	1.7%	1.7%	1.7%	1.5%	1.8%	1.8%	2.0%	2.9%	3.2%	2.5%	3.3%

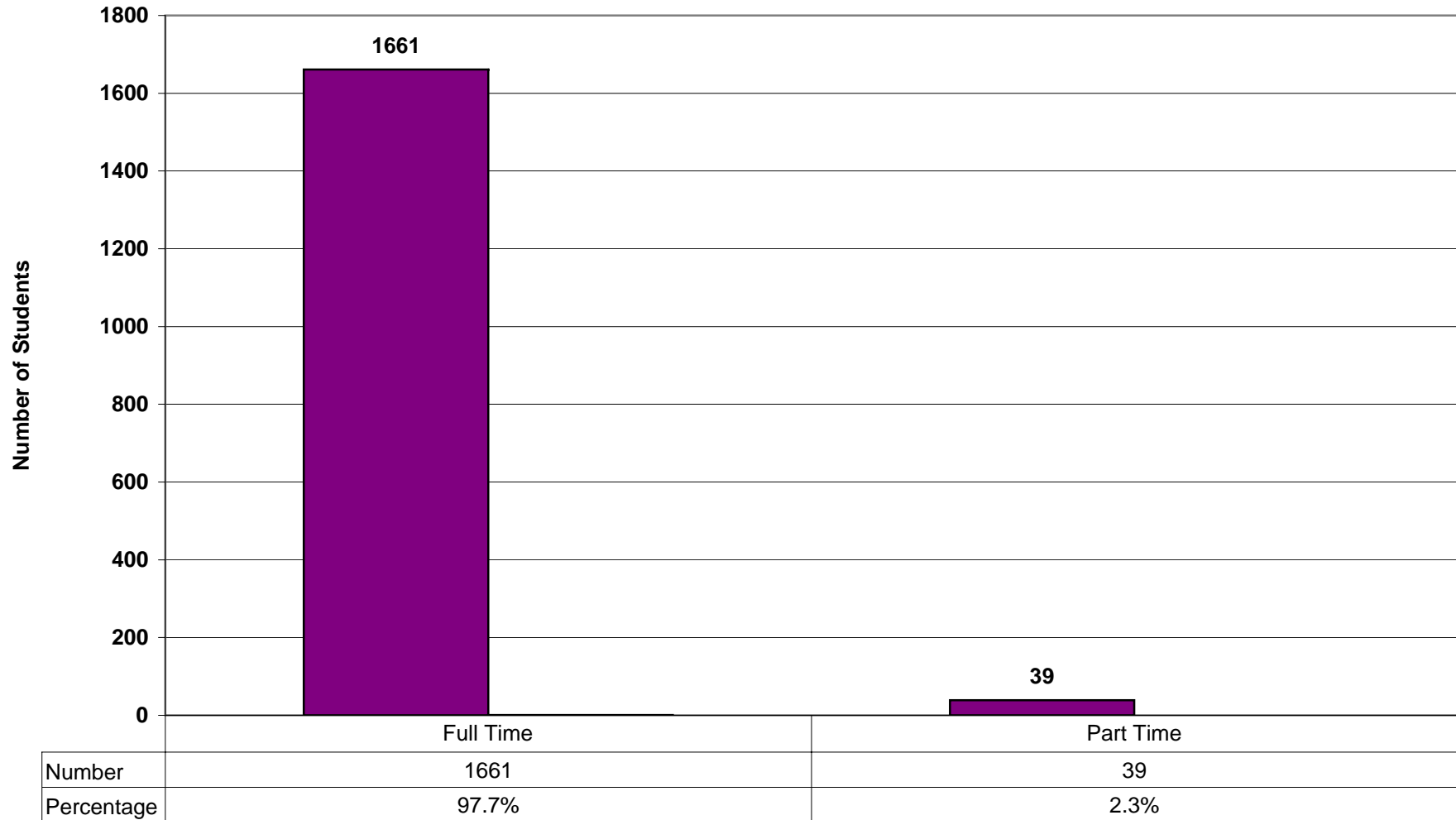
* for whom both ACT and class rank available

**Fall 2004
Distribution by Curriculum
Enrolled Freshmen New From High School**



N=1700

Fall 2004
Distribution of Full-Time and Part-Time Students
Enrolled Freshmen New From High School



N=1700

**New Degree Students Entering UNI Directly from High School Fall 2004
By Major Interest as Indicated on Application for Admission**

College of Business			
Major	Teach	Liberal Arts	Total
Accounting	0	133	133
Business Teaching	1	0	1
Economics	0	5	5
Finance	0	37	37
Real Estate	0	7	7
Management	0	120	120
Marketing	0	72	72
Management Info Systems	0	8	8
Total	1	382	383

College of Education			
Major	Teach	Liberal Arts	Total
Athletic Training	0	39	39
Early Childhood	18	0	18
Elementary Ed	195	0	195
Health	3	8	11
Leisure Services	0	1	1
Middle Level Ed	3	0	3
Physical Ed	13	4	17
Special Ed	0	0	0
Total	232	52	284

College of Social and Behavioral Sciences			
Major	Teach	Liberal Arts	Total
American Studies	0	0	0
Anthropology	0	2	2
Asian Studies	0	0	0
Criminology	0	37	37
Family Services	0	1	1
History	36	10	46
Interior Design	0	11	11
Political Science/Pub Admin/Comm	1	15	16
Psychology	3	59	62
Social Science	10	0	10
Social Work	0	18	18
Sociology	2	5	7
Textile and Apparel	0	7	7
Total	52	165	217

College of Humanities & Fine Arts			
Major	Teach	Liberal Arts	Total
Art	10	32	42
Communications	4	66	70
Communicative Disorders	0	18	18
English	27	12	39
French/Greman/Portuguese	1	1	2
Music	32	11	43
Music Performance	0	13	13
Philosophy	0	1	1
Religion	0	2	2
Spanish	5	7	12
TESOL	1	1	2
Theater	0	10	10
Theater Performance	0	8	8
Total	80	182	262

College of Natural Sciences			
Major	Teach	Liberal Arts	Total
Biology	7	77	84
Chemistry	2	9	11
Computer Science	0	32	32
Earth Sciences	0	5	5
Graphic Communication	0	13	13
Industrial Technology	4	26	30
Mathematics	22	13	35
Physics	1	7	8
Sciences: All/JH/Environ	1	0	1
Total	37	182	219

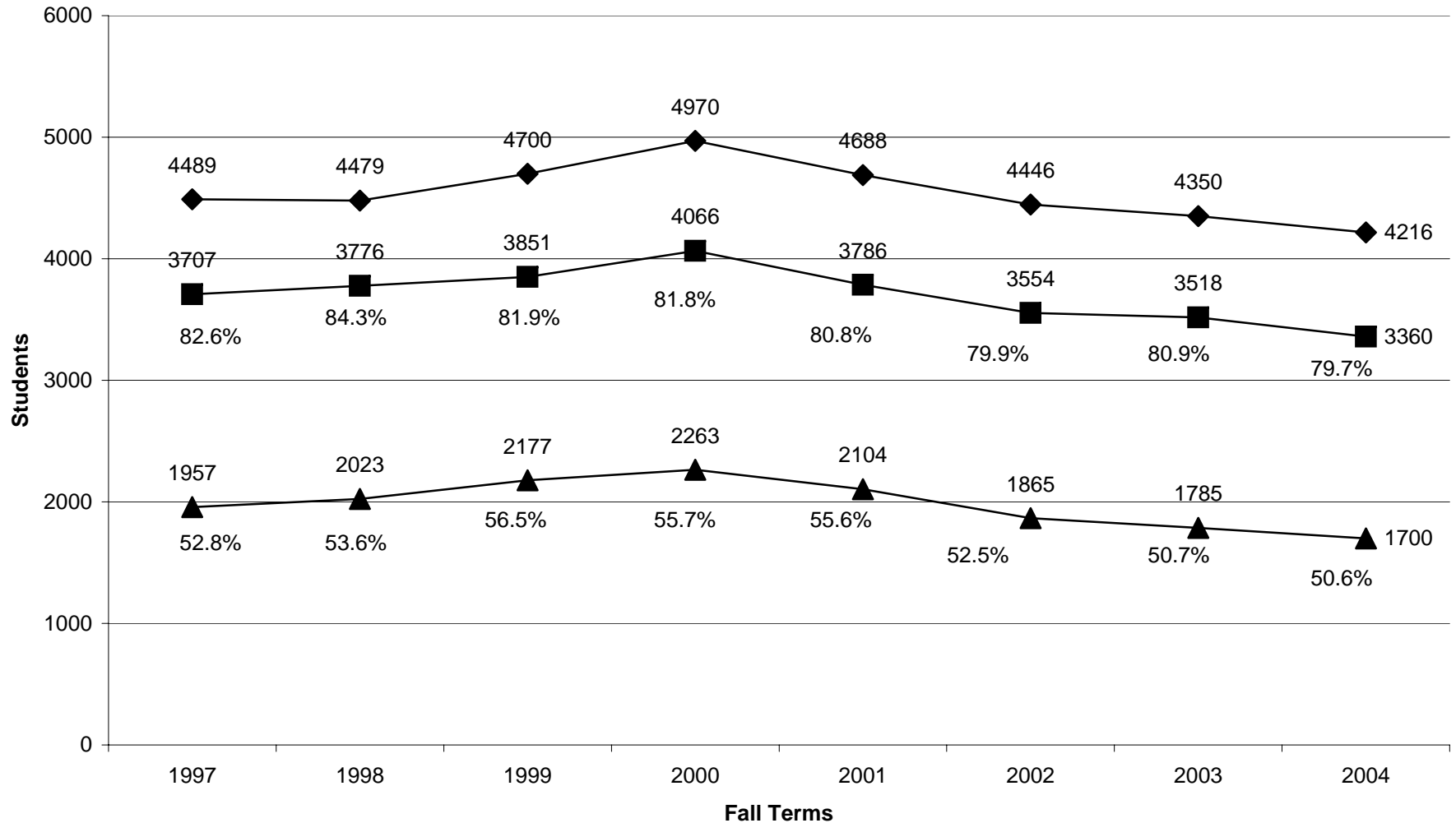
Miscellaneous			
	Teach	Liberal Arts	Total
Individual, General & Liberal	0	8	8
Pre-Professional	0	88	88
Deciding	1	238	239
Total	1	334	335

	Teach	Liberal Arts	Total
Grand Total	403	1297	1700

**Pre-Professional Prospective Major Areas as Indicated
On Application for Admission by New Enrolled Students
Entering Directly from High School Fall 2004**

Major Areas	Number
Dentistry	3
Engineering	1
Law	11
Medicine	19
Mortuary	1
Nursing	44
Optometry	4
Pharmacy	1
Radiological Technology	3
Veterinary Medicine	1
TOTAL	88

New Freshmen Comparison of Applications to Enrolled



◆ Applications ■ Admits ▲ Enrolled

Section II: New Students Entering UNI Fall Semester 2004

Part B. Transfers From Other Colleges and Universities

New Transfer Degree Students Entering UNI Fall 2004

1080	Total two and four year college transfers		
		769	71.2% Iowa two year colleges
		167	15.5% Iowa four year colleges
		144	13.3% Out of state two and four year colleges
769	Total Iowa two year college transfers (public and private)		
		590	76.7% Public with 30 or more transfers
			Hawkeye Community College (188)
			Kirkwood Community College (142)
			North Iowa Area Community College (87)
			Iowa Central Community College (46)
			Des Moines Area Community College (51)
			Ellsworth Community College (43)
			Marshalltown Community College (33)
		167	21.7% Public with fewer than 30 transfers
		12	1.6% Private
167	Total Iowa four year colleges (public and private)		
		80	47.9% Iowa State University (45)
			University of Iowa (35)
		46	27.5% Private with 6 or more transfers
			Wartburg (19)
			Central (6)
			Loras (6)
			Simpson (7)
			St. Ambrose (8)
		41	24.6% Private with fewer than 6 transfers
144	Total out of state two and four year colleges		
		58	40.3% Out of state two year colleges
		86	59.7% Out of state four year colleges

* These statistics do not include unclassified students or students entering directly from high school who have attended college before enrolling at UNI.

**New Two-Year College Transfers
Fall Terms 1990-2004**

		College Code	1990	1991	1992	1993	1994	1995	1996	1997	1998	1999	2000
Area I	NE Iowa Comm Coll, Calmar	110IA	6	9	4	7	7	9	10	14	15	16	18
	NE Iowa Comm Coll, Dubuque	109IA	2	8	6	10	17	18	20	24	22	28	17
Area II	North Iowa Area Comm Coll, Mason City	157IA	145	170	134	97	123	145	125	108	94	128	105
Area III	Iowa Lakes Comm Coll, Estherville	131IA	25	29	19	13	15	24	22	30	15	28	23
	Iowa Lakes Comm Coll, Emmetsburg	129IA	6	6	9	2	13	6	11	11	13	14	11
Area IV	NW Iowa Tech Coll, Sheldon	177IA	0	2	1	1	0	1	2	5	3	7	8
Area V	Iowa Central Comm Coll, Fort Dodge	133IA	29	62	42	48	31	30	30	44	46	51	61
	Iowa Central Comm Coll, Eagle Grove	125IA	0	0	2	0	3	3	0	1	1	1	3
	Iowa Central Comm Coll, Storm Lake	126IA	0	0	0	0	0	0	1	0	0	3	1
	Iowa Central Comm Coll, Webster City	195IA	9	13	10	8	11	10	10	10	5	5	3
Area VI	Marshalltown Comm Coll, Marshalltown	153IA	46	38	38	29	40	40	31	24	27	12	19
	Ellsworth Comm Coll, Iowa Falls	127IA	57	41	40	38	30	16	35	36	33	26	36
Area VII	Hawkeye Comm Coll, Waterloo	192IA	29	21	21	38	70	110	103	145	138	164	199
Area IX	Eastern Iowa Comm Coll District	114IA	49	54	43	49	59	64	39	45	42	46	48
Area X	Kirkwood Comm Coll, Cedar Rapids	107IA	126	135	124	100	96	111	87	117	113	120	105
	Kirkwood Comm Coll, Iowa City	105IA	0	0	0	0	0	2	4	2	1	3	10
Area XI	Des Moines Area Comm Coll, Ankeny	101IA	65	48	54	44	51	43	46	31	44	29	45
	Des Moines Area Comm Coll, Boone	102IA	5	3	4	0	4	8	6	7	4	6	7
	Des Moines Area Comm Coll, Carroll	103IA	0	0	0	0	0	7	9	6	5	7	5
Area XII	Western Iowa Comm Coll, Sioux City	179IA	1	2	0	2	2	5	5	5	15	11	9
Area XIII	Iowa Western Comm Coll, Council Bluffs	117IA	7	5	5	4	8	4	7	4	5	4	4
	Iowa Western Comm Coll, Clarinda	111IA	1	5	0	0	0	2	1	0	0	2	0
Area XIV	Southwestern Comm Coll, Creston	118IA	7	11	13	10	13	14	8	9	11	6	8
Area XV	Indian Hills Comm Coll, Centerville	108IA	4	9	3	5	4	5	3	8	3	7	9
	Indian Hills Comm Coll, Ottumwa	115IA	26	32	40	35	33	22	33	36	32	25	29
Area XVI	Southeastern Comm Coll, W Burlington	106IA	4	7	12	12	19	27	25	25	17	25	18
	Southeastern Comm Coll, Keokuk	147IA	4	3	2	2	3	2	0	10	0	2	3
Private 2yr	American Inst of Business, Des Moines	201IA	1	0	1	0	0	0	0	1	1	1	0
	Hamilton College, Cedar Falls	202IA	0	0	0	0	0	0	0	0	2	2	2
	Hamilton College	203IA	0	0	0	0	0	0	0	0	0	1	2
	Waldorf College, Forest City	291IA	45	38	31	21	23	42	19	29	24	12	18

These statistics do not include unclassified students or students entering directly from high school who have attended college before attending UNI.

University of Northern Iowa
Office of Admissions
September 2004

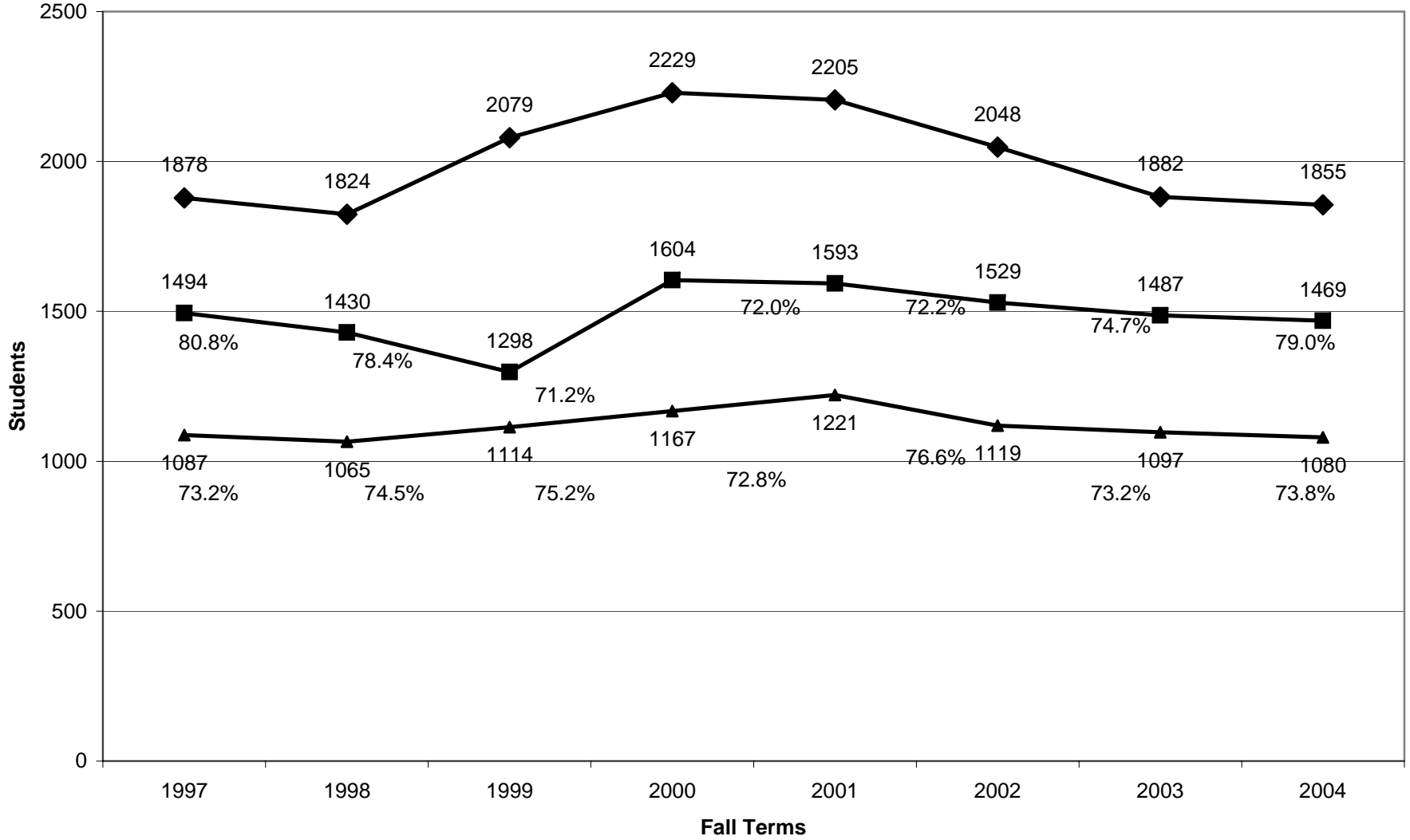
**New Two-Year College Transfers
Fall Terms 1990-2004**

2001	2002	2003	2004
12	11	16	17
24	25	25	11
121	100	83	87
14	31	11	10
20	7	10	2
4	4	4	7
57	72	66	46
1	1	0	1
1	2	1	1
2	3	2	4
26	27	33	33
30	36	33	43
198	142	168	188
44	36	46	28
140	144	143	142
8	13	16	10
57	31	41	51
8	9	8	7
5	17	6	10
7	6	9	3
7	10	2	3
0	0	0	0
6	4	1	4
3	2	6	4
22	17	22	23
20	22	34	21
0	1	0	1
0	2	0	1
1	5	6	2
0	2	0	0
13	17	12	9

These statistics do not include unclassified students or students entering directly from high school who have attended college before attending UNI.

University of Northern Iowa
Office of Admissions
September 2004

New Transfers Comparison of Applications to Enrolled



◆ Applications ■ Admits ▲ Enrolled

Section II: New Students Entering UNI Fall Semester 2004

Part C. New Graduate Students

NEW GRADUATE STUDENTS FALL 2004 BY MAJOR AREA

Major	Code	Enrolled			Admitted			Total		
		Male	Female	Total	Male	Female	Total	Male	Female	Total
Non-degree	090	28	28	56	10	12	22	38	40	78
Pre-MBA	15Z	1	0	1	1	0	1	2	0	2
Business Adm.	157	13	6	19	21	20	41	34	26	60
Accounting (MAcc)	158	5	2	7	1	6	7	6	8	14
Post Sec.Ed:Stu Aff	170	4	13	17	4	17	21	8	30	38
Education (C&I)	201	0	0	0	3	5	8	3	5	8
Educ. Leadership	206	3	3	6	3	3	6	6	6	12
C&I: Education of the Gifted	21K	0	0	0	2	1	3	2	1	3
C&I: Elementary Education	21L	0	1	1	1	2	3	1	3	4
C&I: Middle Level Education	21N	0	0	0	0	3	3	0	3	3
C&I: Literacy Education	21Q	1	33	34	0	4	4	1	37	38
C&I: Early Childhood Education	21U	0	4	4	0	2	2	0	6	6
Special Education	22S	1	0	1	1	2	3	2	2	4
Special Education	240	1	9	10	0	8	8	1	17	18
Adv St Cert/Ed Adm	26C	1	5	6	0	0	0	1	5	6
Principalship	268	17	16	33	7	2	9	24	18	42
Perf & Traning Technology	27P	2	0	2	1	1	2	3	1	4
C&I: Instructional Technology	279	2	3	5	3	1	4	5	4	9
School Counseling	285	4	7	11	2	20	22	6	27	33
Mental Hlth Couns	288	1	9	10	1	10	11	2	19	21
Educ Psychology	290	0	10	10	2	13	15	2	23	25
Educ Psy-Schl Psy	293	2	7	9	0	5	5	2	12	14
Ed Psych:Prof Dev	298	1	0	1	0	2	2	1	2	3
Doctor of Ind Tech	332	1	0	1	4	0	4	5	0	5
Technology	349	6	1	7	2	0	2	8	1	9
Sch Lib Media Study	353	0	3	3	0	3	3	0	6	6
Psychology	400	6	16	22	16	30	46	22	46	68
Health Education	411	3	7	10	4	5	9	7	12	19
Athletic Training	42N	3	8	11	0	0	0	3	8	11
Physical Education	420	10	5	15	5	2	7	15	7	22
Comm Leisure Svcs Program	44C	1	2	3	2	7	9	3	9	12
Leisure, Youth & Human Svcs	44H	0	5	5	1	2	3	1	7	8
Leisure, Svcs Management Svcs	44Q	1	0	1	3	2	5	4	2	6
Social Work (MSW)	451	3	11	14	7	20	27	10	31	41
Comm. Studies	480	5	9	14	8	16	24	13	25	38
Speech Pathology	511	0	15	15	0	18	18	0	33	33
Music Education	520	1	2	3	0	2	2	1	4	5
Comp Theory	521	0	0	0	0	1	1	0	1	1
Performance	522	1	0	1	0	1	1	1	1	2
Piano Perf & Ped	524	2	3	5	5	5	10	7	8	15
Conducting	527	3	0	3	1	0	1	4	0	4
Jazz Pedagogy	560	0	0	0	1	0	1	1	0	1
Art	600	0	1	1	5	7	12	5	8	13
English	620	3	7	10	5	9	14	8	16	24
Tchg Eng/Spk Other	629	1	6	7	4	10	14	5	16	21
Women's Studies	685	0	4	4	0	9	9	0	13	13
TESOL/French	692	0	0	0	1	1	2	1	1	2
TESOL/German	694	1	0	1	0	0	0	1	0	1
TESOL/Spanish	698	0	0	0	1	0	1	1	0	1
French	720	1	1	2	0	2	2	1	3	4
German	740	0	2	2	0	1	1	0	3	3
Spanish	780	0	1	1	4	2	6	4	3	7
Math for the Middle Grades 4-8	80A	0	1	1	0	0	0	0	1	1
Mathematics	800	2	5	7	3	4	7	5	9	14
Computer Science	813	6	1	7	23	3	26	29	4	33
Science Educ	821	1	2	3	1	1	2	2	3	5
Environmental Health	83H	0	0	0	0	1	1	0	1	1

NEW GRADUATE STUDENTS FALL 2004 BY MAJOR AREA

Major	Code	Enrolled			Admitted			Total		
		Male	Female	Total	Male	Female	Total	Male	Female	Total
Environmental Science	83S	0	1	1	4	2	6	4	3	7
Environmental Technology	83T	0	0	0	1	0	1	1	0	1
Biology	84S	0	2	2	3	1	4	3	3	6
Biology	845	1	0	1	3	1	4	4	1	5
Chemistry (MA)	865	0	0	0	1	2	3	1	2	3
Chemistry (MS)	866	0	0	0	5	2	7	5	2	7
Public Policy	950	3	11	14	11	9	20	14	20	34
History	960	8	7	15	6	4	10	14	11	25
Geography	970	1	1	2	4	3	7	5	4	9
Sociology	980	1	3	4	2	5	7	3	8	11
TOTAL		162	299	461	209	332	541	371	631	1002

University of Northern Iowa
 Office of the Registrar
 September 2004

**IOWA
ENROLLED NEW GRADUATE STUDENTS FALL 2004
BY BACHELORS DEGREE COLLEGE**

College	Male	Female	Total
Iowa State University	2	16	18
University of Northern Iowa	70	120	190
University of Iowa	7	11	18
Briar Cliff College	0	2	2
Buena Vista College	3	5	8
Central College	1	4	5
Clarke College	0	4	4
Coe College	1	2	3
Cornell College	2	3	5
Drake University	2	3	5
Hamilton College	0	1	1
Iowa Wesleyan College	1	0	1
Loras College	2	4	6
Luther College	0	4	4
Morningside College	1	3	4
Mt. Mercy College	3	4	7
St. Ambrose University	1	4	5
Simpson College	1	0	1
University of Dubuque	1	1	2
Upper Iowa University	3	6	9
Wartburg College	7	10	17
IOWA TOTAL	108	207	315

**NON-IOWA
ENROLLED NEW GRADUATE STUDENTS FALL 2004
BY BACHELORS DEGREE COLLEGE**

College	Male	Female	Total
Talladega College		1	1
Tuskegee University	1		1
Alabama Total	1	1	2
University of Arizona		1	1
Arizona Total	0	1	1
Bethany Bible College		1	1
California Polytech State University	1	1	2
San Diego State University		1	1
University of Southern California		1	1
California Total	1	4	5
University of Denver		1	1
Colorado Total	0	1	1
Florida A & M University	1	1	2
Rollins College		1	1
University of South Florida		1	1
Florida Total	1	3	4
Fort Valley State University	0	2	2
Mercer University		1	1
Georgia Total	0	3	3
University of Hawaii at Manoa	2		2
Hawaii Total	2	0	2
Augustana College		1	1
Illinois State University		1	1
North Central College		1	1
Northern Illinois University		1	1
Northwestern University		1	1
Rockford College		1	1
Western Illinois University	1	1	2
Illinois Total	1	7	8
Anderson University		1	1
Manchester College	1		1
Taylor University		2	2
University of Southern Indiana		1	1
Indiana Total	1	4	5
Eastern Kentucky University	1		1
Kentucky Total	1	0	1
Dillard University		1	1
Nichols State University	1		1
Southern Univ - New Orleans		2	2
Tulane University		1	1
Xavier University of Louisiana		2	2
Louisiana Total	1	6	7
Michigan State University		2	2
Michigan Total	0	2	2
St. Cloud State University		1	1
Minnesota State Univ - Mankato	1	2	3
Minnesota State Univ - Moorhead		2	2
University of Minnesota - Twin Cities	1		1
Bemidji State University		1	1
University of Minnesota - Morris		1	1
Northwestern College	1		1
St. Olaf College	1		1
St. John's University	1		1
Gustavus Adolphus College	1		1
Bethel College		1	1
Minnesota Total	6	8	14

**NON-IOWA
ENROLLED NEW GRADUATE STUDENTS FALL 2004
BY BACHELORS DEGREE COLLEGE**

Page 2

College	Male	Female	Total
Central Missouri State Univ	1		1
NW Missouri State University		1	1
Park Univ	1	1	2
SW Missouri State Univ		1	1
Truman State Univ	1		1
Missouri Total	3	3	6
Creighton Univ	1		1
Hastings College		1	1
Univ of Nebraska - Lincoln	1		1
Univ of Nebraska - Omaha		1	1
Wayne State College		1	1
Nebraska Total	2	3	5
U.S. Military Academy	1		1
New York Total	1	0	1
Appalachian State Univ	1		1
Univ of NC - Wilmington	1	1	2
North Carolina Total	2	1	3
Valley City State Univ		1	1
North Dakota Total	0	1	1
Oberlin College		1	1
Univ of Toledo	1		1
Ohio Total	1	1	2
Southern Oregon University		1	1
Oregon Total	0	1	1
Penn State Univ - University Park	1		1
Pennsylvania Total	1	0	1
Augustana College	1	1	2
Univ of South Dakota		1	1
South Dakota Total	1	2	3
Fisk Univ		1	1
Tennessee Total	0	1	1
Abilene Christian Univ	1		1
Univ of the Incarnate Word		1	1
Texas Total	1	1	2
Univ of Virginia	1		1
Virginia Total	1	0	1
Univ of WI - Madison	1		1
Univ of WI - Oshkosh	1		1
Univ of WI - Stevens Point		1	1
Univ of WI - LaCrosse		1	1
Univ of WI - River Falls		1	1
Univ of WI - Eau Claire		2	2
Univ of WI - Whitewater		1	1
Viterbo Univ	1		1
Wisconsin Total	3	6	9
NON-IOWA TOTAL	31	60	91

**NEW GRADUATE STUDENTS
ENROLLMENT BY STATE OR COUNTRY OF ORIGIN
FALL 2004**

STATE		Male	Female	Total
AL	ALABAMA	1	0	1
CA	CALIFORNIA	1	1	2
CO	COLORADO	0	1	1
FL	FLORIDA	1	2	3
GA	GEORGIA	0	3	3
HI	HAWAII	2	0	2
IA	IOWA	117	225	342
IL	ILLINOIS	3	6	9
LA	LOUISIANA	1	4	5
MN	MINNESOTA	2	11	13
MO	MISSOURI	0	2	2
NC	NORTH CAROLINA	0	1	1
ND	NORTH DAKOTA	0	2	2
NE	NEBRASKA	1	1	2
OH	OHIO	1	0	1
OR	OREGON	0	1	1
PA	PENNSYLVANIA	1	0	1
SC	SOUTH CAROLINA	1	0	1
TX	TEXAS	4	4	8
WI	WISCONSIN	2	4	6
TOTAL		138	268	406

COUNTRY		Male	Female	Total
AL	ALBANIA	0	1	1
BG	BANGLADESH	0	1	1
BR	BRAZIL	1	1	2
CH	CHINA	1	1	2
CO	COLUMBIA	1	0	1
FR	FRANCE	2	0	2
GH	GHANA	0	1	1
HK	HONG KONG	1	2	3
ID	INDONESIA	2	1	3
IN	INDIA	6	1	7
IT	ITALY	1	0	1
JA	JAPAN	0	3	3
KE	KENYA	2	2	4
KS	KOREA (South)	2	1	3
MA	MADAGASCAR	1	0	1
ML	MALI	1	0	1
MX	MEXICO	0	1	1
NP	NEPAL	0	1	1
PE	PERU	0	1	1
PO	PORTUGAL	1	0	1
RS	RUSSIA	0	9	9
TW	REP. OF CHINA (TAIWAN)	1	2	3
UP	UKRAINE	0	1	1
VM	VIETNAM	0	1	1
ZI	ZIMBABWE	1	0	1
TOTAL		24	31	55

GRAND TOTAL		162	299	461
--------------------	--	------------	------------	------------

Section III: Miscellaneous

**College Level Examination Program
Institutional Summary Report
July 2003 - June 2004**

Total Number of Candidates 331

Total Number of Tests 362

	<u>Score Needed For Credit</u>	<u>Number</u> <u>Mean</u>		<u>Number</u> <u>Mean</u>		<u>Number</u> <u>Mean</u>	
		Males	Females	Males	Females	Total	Total
English Composition	(56)	33	54	43	56	76	55
English Composition w/essay	(56)	7	60	6	57	13	59
Spanish Language	(50)	35	51	85	51	120	51
Mathematics	(74)	28	62	18	61	46	61
Natural Science	(52)	16	58	6	61	22	59
Social Sciences & History	(55)	19	55	5	52	24	55

Foreign Language Subject Examinations	Scores Needed for Credit		
	Level I	Level II	Level III
College Level French	11	50	62
College Level German	5	53	63
College Level Spanish	120	51	55

Candidates taking: One test - 309 Two tests - 16 Three tests - 4 Four tests - 1 Five tests - 1

**Prepared by: Examination and Evaluation Services
Academic Services
University of Northern Iowa**

**Comparison of New Undergraduate Student Gross Applications for Fall Semester
To Admission and Enrollment**

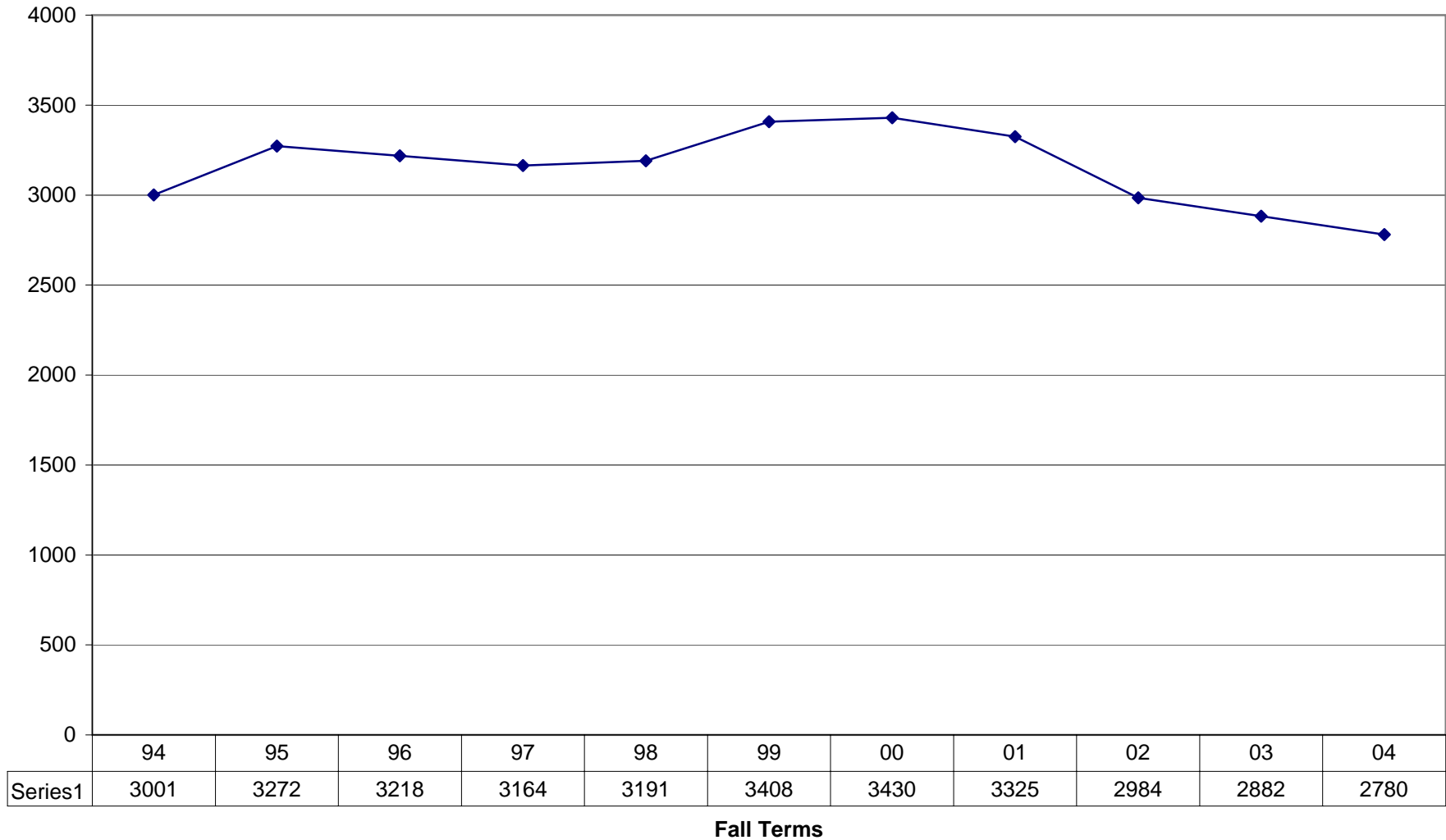
	1990		1991		1992		1993		1994		1995		1996	
Gross Applications	6159		6216		5712		5886		6180		6661		6418	
Cleared for Admission	4993	81.1%	4993	80.3%	4712	82.5%	4803	81.6%	5075	82.1%	5563	83.5%	5353	83.4%
Denied	662	10.7%	781	12.6%	553	9.7%	545	9.3%	643	10.4%	701	10.5%	630	9.8%
Cancelled	2236	36.3%	2229	35.9%	2335	40.9%	2475	42.0%	2534	41.0%	2688	40.4%	2567	40.0%
Enrolled	3261	52.9%	3206	51.6%	2824	49.4%	2866	48.7%	3001	48.6%	3272	49.1%	3218	50.1%
Enrolled as % of Admitted		65.3%		64.2%		59.9%		59.7%		59.1%		58.8%		60.1%

	1997		1998		1999		2000		2002		2003		2004	
Gross Applications	6518		6430		6910		7199		6494		6232		6071	
Cleared for Admission	5342	82.0%	5324	82.8%	5460	79.0%	5670	78.8%	5083	78.3%	5005	80.3%	4829	79.5%
Denied	687	10.5%	638	9.9%	736	10.6%	627	8.7%	589	9.1%	505	8.1%	494	8.1%
Cancelled	2667	40.9%	2601	40.5%	2761	40.0%	2240	31.1%	2099	32.3%	2076	33.3%	1618	26.7%
Enrolled	3164	48.5%	3191	49.6%	3413	49.4%	3430	47.6%	2984	46.0%	2882	46.2%	2780	45.8%
Enrolled as % of Admitted		59.2%		59.9%		62.5%		60.5%		58.7%		57.6%		57.6%

Statistics include new freshman and transfer students.

University of Northern Iowa
Office of Admissions
September 2004

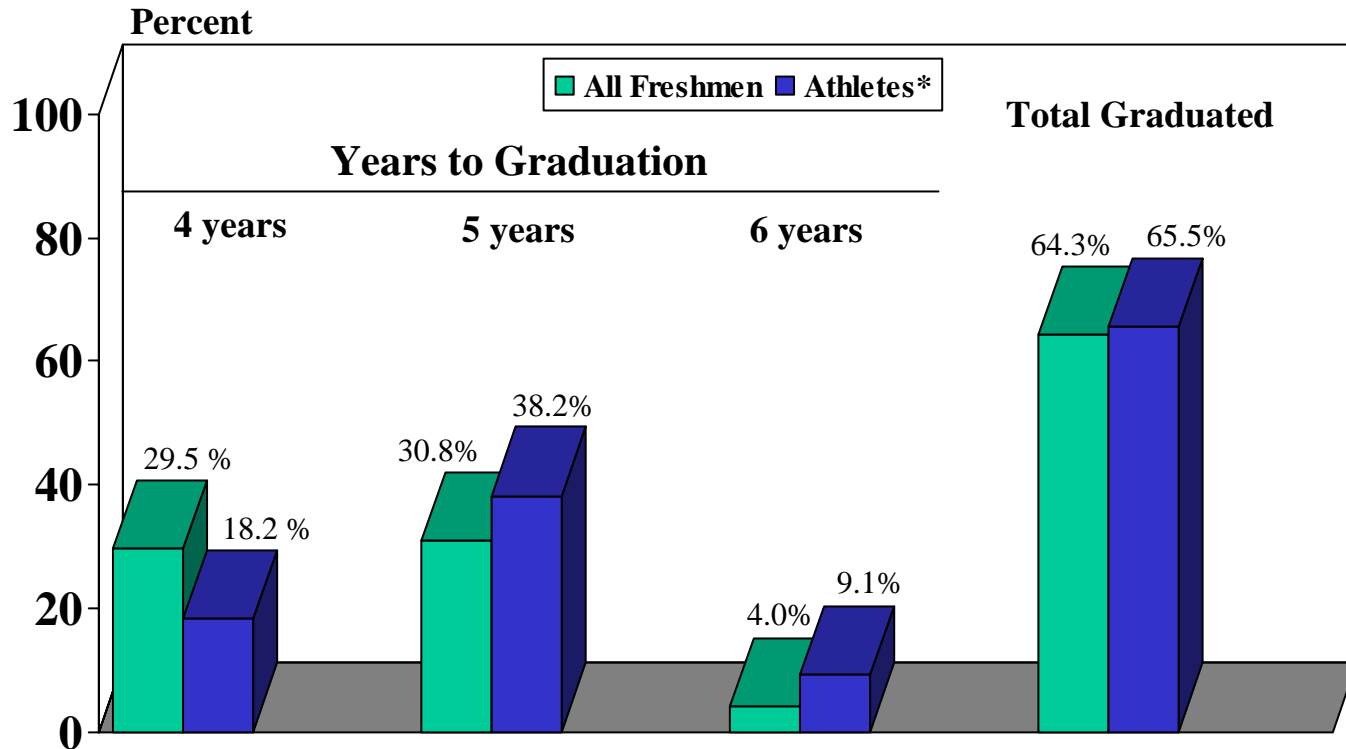
New Undergraduate Students for Fall 1983 through 2004



Freshman Class of 1998

Graduation Rate of Fulltime Students

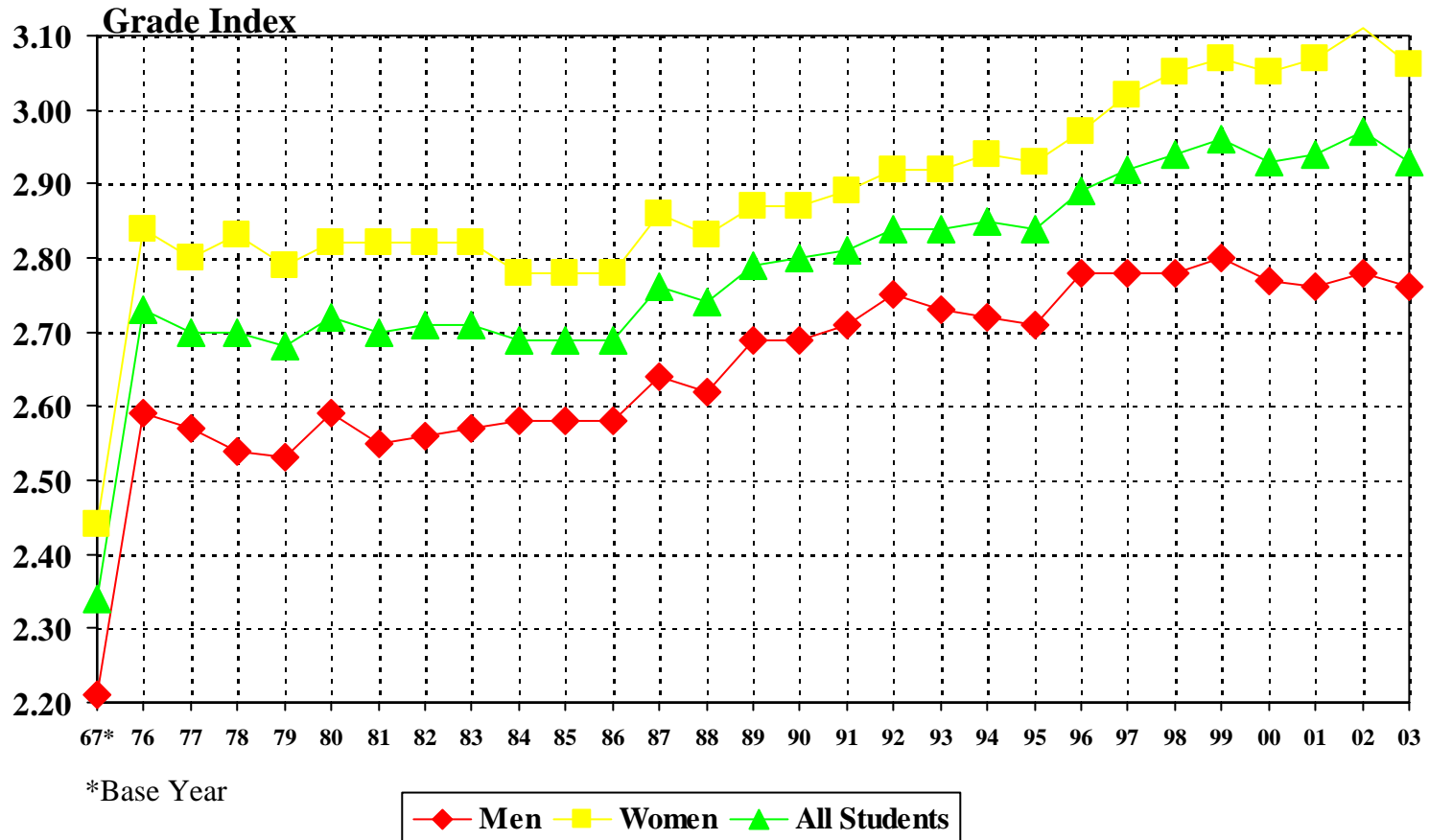
Total Class and Athletes



*Athletes who received Athletic Aid first year of enrollment at UNI

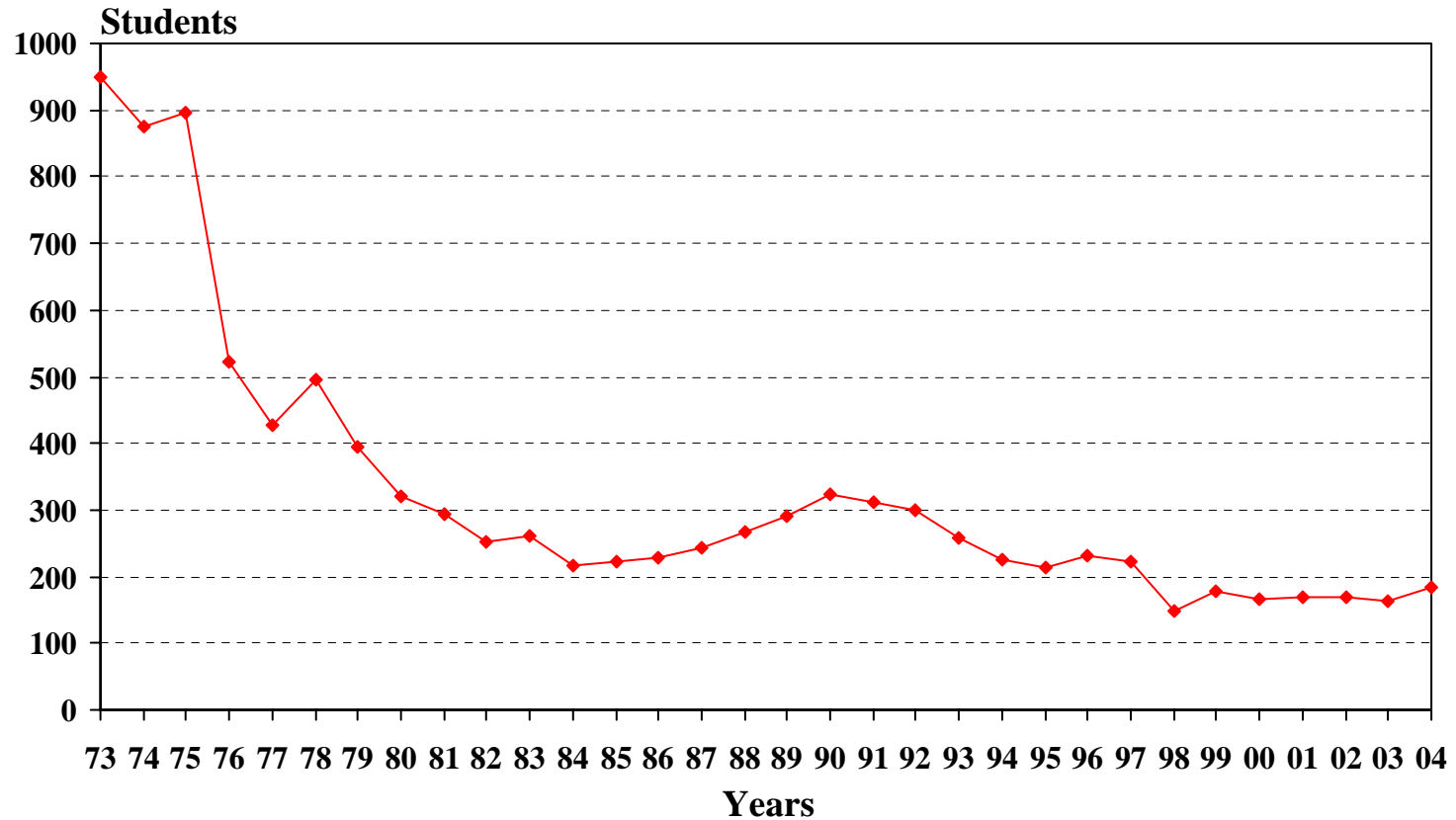
Average Grade Indexes

Fall Semesters



Students Receiving VA Educational Benefits

Fall Semesters 1973-2004



University of Northern Iowa
Office of the Registrar
September 2004

**STUDENT RETENTION AND PERSISTENCE TO GRADUATION
NEW DIRECT FROM HIGH SCHOOL
ENTERED FALL TERM
FULL-TIME STUDENT DURING INITIAL ENROLLMENT**

<u>1986</u>	<u>1987</u>	<u>1988</u>	<u>1989</u>	<u>1990</u>
1907 enrolled Fa86	1753 enrolled Fa87	1898 enrolled Fa88	1967 enrolled Fa89	2075 enrolled Fa90
1745 (91.5%) returned Sp87	1635 (93.3%) returned Sp88	1759 (92.7%) returned Sp89	1827 (92.9%) returned Sp90	1926 (92.8%) returned Sp91
1491 (78.2%) returned Fa87 (2nd)	1439 (82.1%) returned Fa88 (2nd)	1514 (79.8%) returned Fa89 (2nd)	1611 (81.9%) returned Fa90 (2nd)	1711 (82.5%) returned Fa91 (2nd)
1409 (73.9%) returned Sp88	1346 (76.8%) returned Sp89	1433 (75.5%) returned Sp90	1517 (77.1%) returned Sp91	1614 (77.8%) returned Sp92
1339 (70.2%) returned Fa88 (3rd)	1253 (71.5%) returned Fa89 (3rd)	1372 (72.3%) returned Fa90 (3rd)	1451 (73.8%) returned Fa91 (3rd)	1533 (73.9%) returned Fa92 (3rd)
1293 (67.8%) returned Sp89	1218 (69.5%) returned Sp90	1342 (70.7%) returned Sp91	1418 (72.1%) returned Sp92	1483 (71.5%) returned Sp93
6 (0.3%) graduated by Su89	4 (0.2%) graduated by Su90	12 (0.6%) graduated by Su91	4 (0.2%) graduated by Su92	7 (0.3%) graduated by Su93
1262 (66.2%) returned Fa89 (4th)	1177 (67.1%) returned Fa90 (4th)	1270 (66.9%) returned Fa91 (4th)	1372 (69.8%) returned Fa92 (4th)	1398 (67.4%) returned Fa93 (4th)
1220 (64.0%) returned Sp90	1131 (64.5%) returned Sp91	1237 (65.2%) returned Sp92	1316 (66.9%) returned Sp93	1370 (66.0%) returned Sp94
576 (30.2%) graduated by Su90	547 (31.2%) graduated by Su91	527 (27.8%) graduated by Su92	489 (24.9%) graduated by Su93	505 (24.3%) graduated by Su94
648 (34.0%) returned Fa90 (5th)	598 (34.1%) returned Fa91 (5th)	722 (38.0%) returned Fa92 (5th)	816 (41.5%) returned Fa93 (5th)	832 (40.1%) returned Fa94 (5th)
377 (19.8%) returned Sp91	353 (20.1%) returned Sp92	461 (24.3%) returned Sp93	503 (25.6%) returned Sp94	481 (23.2%) returned Sp95
1075 (56.4%) graduated by Su91	1007 (57.4%) graduated by Su92	1042 (54.9%) graduated by Su93	1104 (56.1%) graduated by Su94	1128 (54.4%) graduated by Su95
124 (6.5%) returned Fa91 (6th)	122 (7.0%) returned Fa92 (6th)	185 (9.7%) returned Fa93 (6th)	166 (8.4%) returned Fa94 (6th)	168 (8.1%) returned Fa95 (6th)
84 (4.4%) returned Sp92	82 (4.7%) returned Sp93	115 (6.1%) returned Sp94	107 (5.4%) returned Sp95	107 (5.2%) returned Sp96
1140 (59.8%) graduated by Su92	1073 (61.2%) graduated by Su93	1146 (60.4%) graduated by Su94	1217 (61.9%) graduated by Su95	1233 (59.4%) graduated by Su96
52 (2.7%) returned Fa92 (7th)	49 (2.8%) returned Fa93 (7th)	65 (3.4%) returned Fa94 (7th)	51 (2.6%) returned Fa95 (7th)	54 (2.6%) returned Fa96 (7th)
<i>1192 (62.5%) total graduated by Su92 or enrolled Fa92</i>	<i>1122 (64.0%) total graduated by Su93 or enrolled Fa93.</i>	<i>1213 (63.9%) total graduated by Su94 or enrolled Fa94</i>	<i>1268 (64.5%) total graduated by Su95 or enrolled Fa95</i>	<i>1287 (62.0%) total graduated by Su96 or enrolled Fa96</i>
247 (13.0%) completed 1st year, but did not return for immediately following fall term.	188 (10.7%) completed 1st year, but did not return for immediately following fall term.	240 (12.6%) completed 1st year, but did not return for immediately following fall term.	209 (10.6%) completed 1st year, but did not return for immediately following fall term.	207 (10.0%) completed 1st year, but did not return for immediately following fall term.

**STUDENT RETENTION AND PERSISTENCE TO GRADUATION
NEW DIRECT FROM HIGH SCHOOL
ENTERED FALL TERM
FULL-TIME STUDENT DURING INITIAL ENROLLMENT**

<u>1991</u>	<u>1992</u>	<u>1993</u>	<u>1994</u>	<u>1995</u>
1950 enrolled Fa91 1803 (92.2%) returned Sp92 1593 (81.7%) returned Fa92 (2nd) 1488 (76.1%) returned Sp93 1403 (71.9%) returned Fa93 (3rd) 1347 (68.9%) returned Sp94 3 (0.2%) graduated by Su94	1659 enrolled Fa92 1544 (93.1%) returned Sp93 1350 (81.4%) returned Fa93 (2nd) 1265 (76.3%) returned Sp94 1193 (71.9%) returned Fa94 (3rd) 1171 (70.6%) returned Sp95 7 (0.4%) graduated by Su95	1807 enrolled Fa93 1660 (91.9%) returned Sp94 1449 (80.2%) returned Fa94 (2nd) 1388 (76.8%) returned Sp95 1322 (73.2%) returned Fa95 (3rd) 1281 (70.9%) returned Sp96 4 (0.2%) graduated by Su96	1856 enrolled Fa94 1716 (92.5%) returned Sp95 1498 (80.7%) returned Fa95 (2nd) 1419 (76.5%) returned Sp96 1339 (72.1%) returned Fa96 (3rd) 1300 (70.0%) returned Sp97 6 (0.3%) graduated by Su97	2007 enrolled Fa95 1877 (93.5%) returned Sp96 1641 (81.8%) returned Fa96 (2nd) 1548 (77.1%) returned Sp97 1474 (73.4%) returned Fa97 (3rd) 1442 (71.8%) returned Sp98 8 (.4%) graduated by Su98
1306 (67.0%) returned Fa94 (4th) 1261 (64.5%) returned Sp95 470 (24.1%) graduated by Su95	1132 (68.2%) returned Fa95 (4th) 1098 (66.2%) returned Sp96 435 (26.2%) graduated by Su96	1242 (68.7%) returned Fa96 (4th) 1204 (66.6%) returned Sp97 486 (26.9%) graduated by Su97	1265 (68.2%) returned Fa97 (4th) 1212 (65.3%) returned Sp98 539 (29.0%) graduated by Su98	1401 (69.8%) returned Fa98 (4th) 1340 (66.8%) returned Sp99 598 (29.8%) graduated by Su99
779 (39.9%) returned Fa95 (5th) 478 (24.5%) returned Sp96 1061 (54.4%) graduated by Su96	653 (39.4%) returned Fa96 (5th) 388 (23.4%) returned Sp97 952 (57.4%) graduated by Su97	705 (39.0%) returned Fa97 (5th) 414 (22.9%) returned Sp98 1039 (57.5%) graduated by Su98	666 (35.9%) returned Fa98 (5th) 384 (20.7%) returned Sp99 1063 (57.3%) graduated by Su99	740 (36.9%) returned Fa99 (5th) 412 (20.5%) returned Sp00 1178 (58.7%) graduated by Su00
153 (7.8%) returned Fa96 (6th) 87 (4.5%) returned Sp97 1177 (60.4%) graduated by Su97 47 (2.4%) returned Fa97 (7th)	105 (6.3%) returned Fa97 (6th) 65 (3.9%) returned Sp98 1032 (62.2%) graduated by Su98 28 (1.7%) returned Fa98 (7th)	125 (6.9%) returned Fa98 (6th) 81 (4.5%) returned Sp99 1133 (62.7%) graduated by Su99 35 (1.9%) returned Fa99 (7th)	117 (6.3%) returned Fa99 (6th) 70 (3.8%) returned Sp00 1155 (62.2%) graduated by Su00 37 (2.0%) returned Fa00 (7th)	127 (6.3%) returned Fa00 (6th) 67 (3.3%) returned Sp01 1289 (64.2%) graduated by Su01 37 (1.8%) returned Fa01 (7th)
<i>1224 (62.8%) total graduated by Su97 or enrolled Fa97</i>	<i>1060 (63.9%) total graduated by Su98 or enrolled Fa98</i>	<i>1168 (64.6%) total graduated by Su99 or enrolled Fa99</i>	<i>1192 (64.2%) total graduated by Su00 or enrolled Fa00</i>	<i>1326 (66.1%) total graduated by Su01 or enrolled Fa01</i>
204 (10.6%) completed 1st year, but did not return for immediately following fall term.	189 (11.4%) completed 1st year, but did not return for immediately following fall term.	197 (10.9%) completed 1st year, but did not return for immediately following fall term.	211 (11.4%) completed 1st year, but did not return for immediately following fall term.	233 (11.6%) completed 1st year, but did not return for immediately following fall term.

**STUDENT RETENTION AND PERSISTENCE TO GRADUATION
NEW DIRECT FROM HIGH SCHOOL
ENTERED FALL TERM
FULL-TIME STUDENT DURING INITIAL ENROLLMENT**

<u>1996</u>	<u>1997</u>	<u>1998</u>	<u>1999</u>	<u>2000</u>
2012 enrolled Fa96 1858 (92.4%) returned Sp97 1649 (82.0%) returned Fa97 (2nd) 1579 (78.5%) returned Sp98 1500 (74.6%) returned Fa98 (3rd) 1480 (73.6%) returned Sp99 8 (0.4%) graduated by Su99	1919 enrolled Fa97 1775 (92.5%) returned Sp98 1582 (82.4%) returned Fa98 (2nd) 1512 (78.8%) returned Sp98 1417 (73.8%) returned Fa99 (3rd) 1392 (72.5%) returned Sp00 10 (.5%) graduated by Su00	1982 enrolled Fa98 1818 (91.7%) returned Sp99 1605 (81.0%) returned Fa99 1537 (77.5%) returned Sp00 1462 (73.8%) returned Fa00 (3rd) 1425 (71.9%) returned Sp01 14 (0.7%) graduated by Su01	2124 enrolled Fa99 1983 (93.4%) returned Sp00 1729 (81.4%) returned Fa00 1643 (77.3%) returned Sp01 1548 (72.9%) returned Fa01 (3rd) 1521 (71.6%) returned Sp02 24 (1.1%) graduated by Su02	2218 enrolled Fa00 2076 (93.6%) returned Sp01 1863 (84.0%) returned Fa01 1778 (80.2%) returned Sp02 1685 (76.0%) returned Fa02 (3rd) 1653 (74.5%) returned Sp03 14 (0.6%) graduated by Su03
1427 (70.9%) returned Fa99 (4th) 1351 (67.1%) returned Sp00 668 (33.2%) graduated by Su00	1350 (70.3%) returned Fa00 (4th) 1306 (68.1%) returned Sp01 552 (28.8%) graduated by Su01	1384 (69.8%) returned Fa01 (4th) 1321 (66.6%) returned Sp02 585 (29.5%) graduated by Su02	1458 (68.6%) returned Fa02 (4th) 1405 (66.1%) returned Sp03 712 (33.5%) graduated by Su03	1585 (71.5%) returned Fa03 (4th) 1507 (67.9%) returned Sp04 751 (33.9%) graduated by Su04
719 (35.7%) returned Fa00 (5th) 402 (20.0%) returned Sp01 1241 (61.7%) graduated by Su01	755 (39.3%) returned Fa01 (5th) 425 (22.1%) returned Sp02 1168 (60.9%) graduated by Su02	749 (37.8%) returned Fa02 (5th) 396 (20.0%) returned Sp03 1196 (60.3%) graduated by Su03	738 (34.7%) returned Fa03 (5th) 407 (19.2%) returned Sp04 1292 (60.8%) graduated by Su04	793 (35.8%) returned Fa04 (5th)
123 (6.1%) returned Fa01 (6th) 73 (3.6%) returned Sp02 1338 (66.5%) graduated by Su02 27 (1.3%) returned Fa02 (7th)	111 (5.8%) returned Fa02 (6th) 73 (3.8%) returned Sp03 1252 (65.2%) graduated by Su03 43 (2.2%) returned Fa03 (7th)	113 (5.7%) returned Fa03 (6th) 61 (3.1%) returned Sp04 1274 (64.3%) graduated by Su04 40 (2.0%) returned Fa04 (7th)	134 (6.3%) returned Fa04 (6th)	
<i>1365 (67.8%) total graduated by Su02 or enrolled Fa02</i>	<i>1295 (67.5%) total graduated by Su03 or enrolled Fa03</i>	<i>1314 (66.3%) total graduated by Su04 or enrolled Fa04</i>	<i>1426 (67.1%) total graduated by Su04 or enrolled Fa04</i>	<i>1544 (69.6%) total graduated by Su04 or enrolled Fa04</i>
200 (9.9%) completed 1st year, but did not return for immediately following fall term.	185 (9.6%) completed first year, but did not return for immediately following fall term.	205 (10.3%) completed first year but did not return for immediately following fall term.	247 (11.6%) completed first year but did not return for immediately following fall term.	207 (9.3%) completed first year but did not return for immediately following fall term.

**STUDENT RETENTION AND PERSISTENCE TO GRADUATION
NEW DIRECT FROM HIGH SCHOOL
ENTERED FALL TERM
FULL-TIME STUDENT DURING INITIAL ENROLLMENT**

<u>2001</u>	<u>2002</u>	<u>2003</u>	<u>2004</u>	<u>2005</u>
2064 enrolled Fa01 1925 (93.3%) returned Sp02 1681 (81.4%) returned Fa02 1601 (77.6%) returned Sp03 1515 (73.4%) returned Fa03 (3rd) 1487 (72.0%) returned Sp04 16 (0.8%) graduated by Su04	1822 enrolled Fa02 1689 (92.7%) returned Sp03 1468 (80.6%) returned Fa03 1386 (76.1%) returned Sp04 1330 (73.0%) returned Fa04	1740 enrolled Fa03 1616 (92.9%) returned Sp04 1417 (81.4%) returned Fa04		
1460 (70.7%) returned Fa04 (4th)				

236 (11.4%) completed 1st year
but did not return for immediately
following fall term.

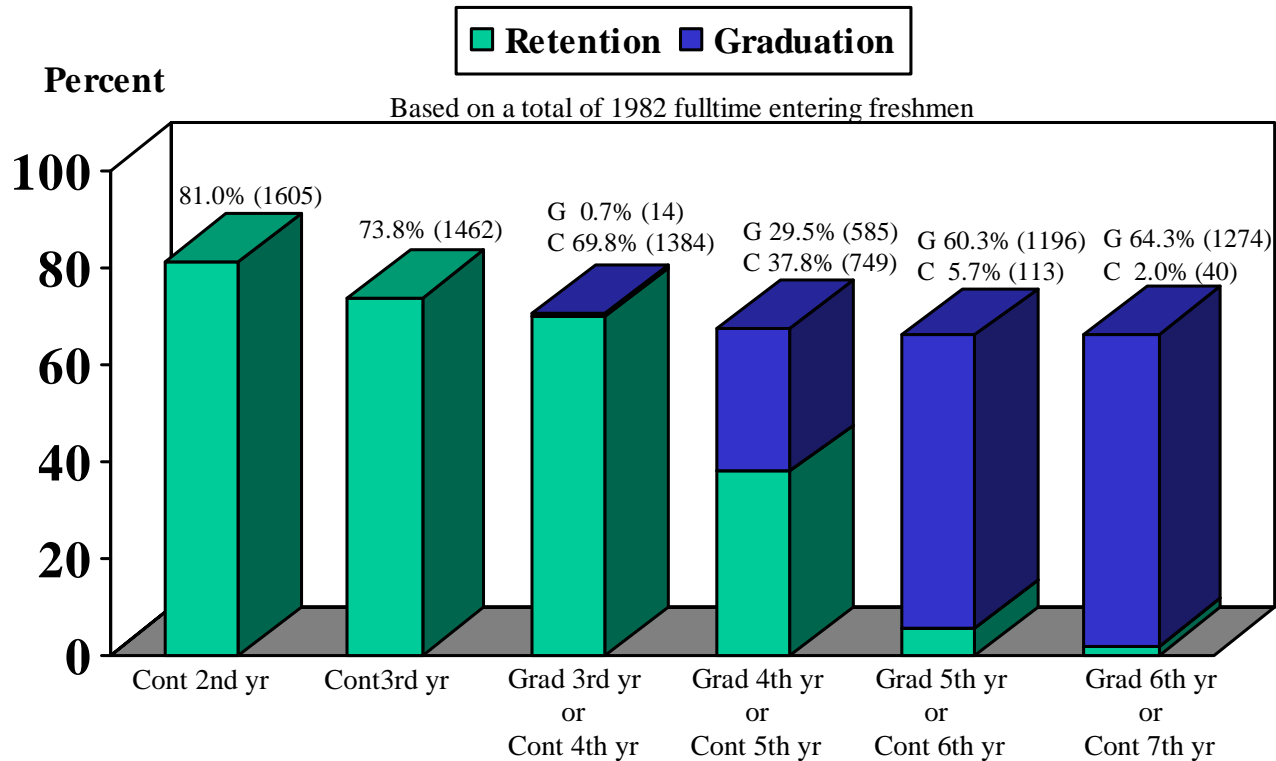
212 (11.6%) completed 1st year
but did not return for immediately
following fall term.

197 (11.3%) completed 1st year
but did not return for immediately
following fall term.

/jlw/stats.23

University of Northern Iowa
Office of the Registrar
October 2004

New Fulltime Direct from HS Freshman Class of 1998 Retention and Graduation Rate



Graduation figures reflect cumulative percentages/totals

University of Northern Iowa
Office of the Registrar
October 2004