

University of Northern Iowa

UNI ScholarWorks

---

Science Education Update Conference  
Documents

Science Education Update Conference

---

3-31-2023

## Building Your Teaching Legacy

Robert G. Good

*Carle Illinois College of Medicine*

*Let us know how access to this document benefits you*

Copyright ©2023 Robert G. Good, DO, MACOI

Follow this and additional works at: [https://scholarworks.uni.edu/sciedconf\\_documents](https://scholarworks.uni.edu/sciedconf_documents)



Part of the Science and Mathematics Education Commons

---

### Recommended Citation

Good, Robert G., "Building Your Teaching Legacy" (2023). *Science Education Update Conference Documents*. 56.

[https://scholarworks.uni.edu/sciedconf\\_documents/56](https://scholarworks.uni.edu/sciedconf_documents/56)

This Slideshow is brought to you for free and open access by the Science Education Update Conference at UNI ScholarWorks. It has been accepted for inclusion in Science Education Update Conference Documents by an authorized administrator of UNI ScholarWorks. For more information, please contact [scholarworks@uni.edu](mailto:scholarworks@uni.edu).

**Offensive Materials Statement:** Materials located in UNI ScholarWorks come from a broad range of sources and time periods. Some of these materials may contain offensive stereotypes, ideas, visuals, or language.

# Building Your Legacy

**Robert G Good, DO, MACOI**

*Master Fellow – Internal Medicine*

Clinical Professor of Medicine

Founding Chairman of Curriculum

Carle Illinois College of Medicine

Carle Health Systems

Carle Illinois  
COLLEGE OF MEDICINE



**Largo Medical Center**  
A Teaching Hospital



Who is your HERO?

Papa used to say

**It's not how you start.**

**It's how you finish.**



A photograph of a man lying in a hospital bed, receiving medical attention. He is wearing a light blue hospital gown. Medical staff in white coats and purple gloves are attending to him. One staff member is using a blue manual resuscitator (Ambu-bag) over the man's face. The scene is set in a clinical environment with various medical equipment visible. The text "Jamie's story" is overlaid in white on the image.

# Jamie's story

# Jamie story

---

- Intern year – first night of call – you are in charge
- Code Blue – time of cardiopulmonary arrest – high stress as intern
- Jamie was a RT during nights
- Most the interns got to know her quite well because she worked nights and was part of most of the codes that we experienced at night.
- first year and you had your first night call, the first code that you were now in charge of, there's a lot of impact going on there





# Jamie story

- She was found to Crohn's Dx – was quite malnourished.
- She required a need for TPN so of course when the central line was placed, it resulted in a pneumothorax, which resulted in a need for chest tube, which resulted in respiratory failure, which resulted in ventilation, which resulted in a second pneumothorax,.
- All the time Dr. O was her attending physician and trying to juggle the needs of the patient, keep the healthcare team together, and deal with family members who were shocked to see their otherwise healthy daughter struggling to breathe and even simply communicating. The time – seem like forever.

- 
- I watched a great physician and mentor as he grieved with the family, held the hand of a dying person that was one of his flock, and lead a health care team that was equally impacted.
  - In the middle of the night, on her shift, Jamie passed away.







Dr O

- I have heard Tony give a variety of super talks and lectures over the years, but I remember how he reacted to failure of our medical care.
- I learned the responsibility to influence others thru the failures will happen.
- Multiply the influence.



*IT'S NOT HOW WE START,  
IT'S HOW WE FINISH.*

**It is how you deal with failure  
that determines  
how you achieve success.**

*David Feherty*

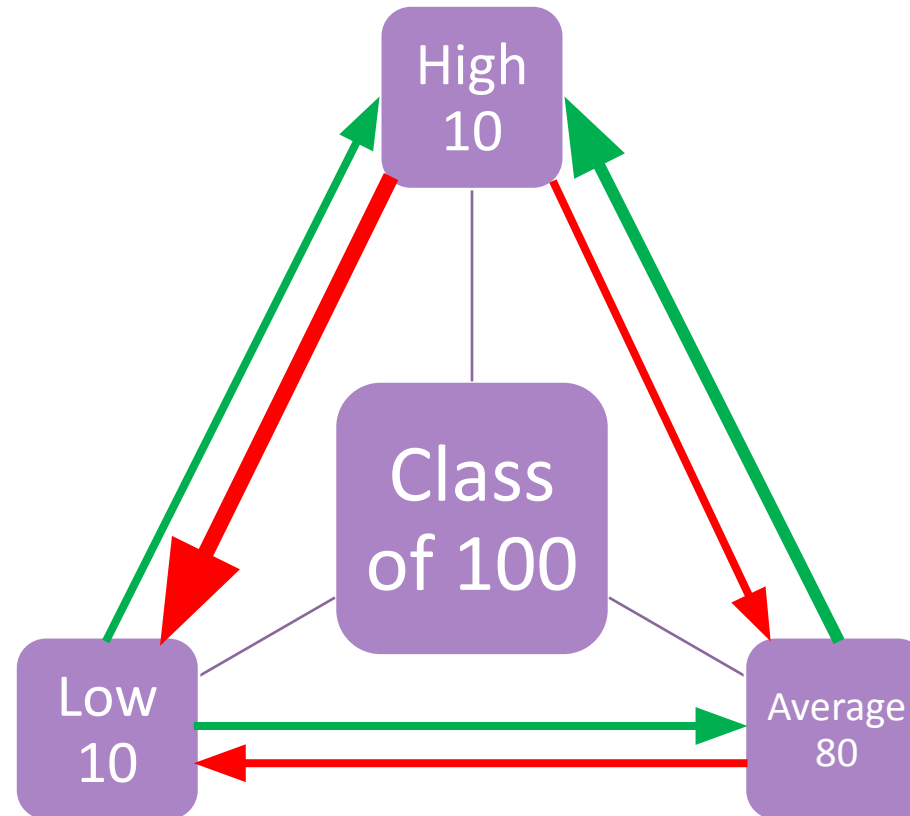
WHY ?



# Building a Legacy Effects Student Outcomes

Nearly 30% are  
Chronically absent

45% feel stressed  
All the time



4% are gifted  
ACT/SAT >90<sup>th</sup>%

62% will enroll in college



**TODAY'S FOOTPRINT IS TOMORROW'S LEGACY.**

**A Legacy is about  
life – not death.**

❖ **Legacy isn't tomorrow. Legacy is now.**

❖ **How people think of you *now* is how  
people will think of you *then*.**

“We are stewards of this world, and we have a calling in our lives to leave it better than how we found it.”

*Jim Rohn*



# Dare to be Joyful.

---

Serve in ways that bring you joy. Angry, unhappy people leave sad legacies.



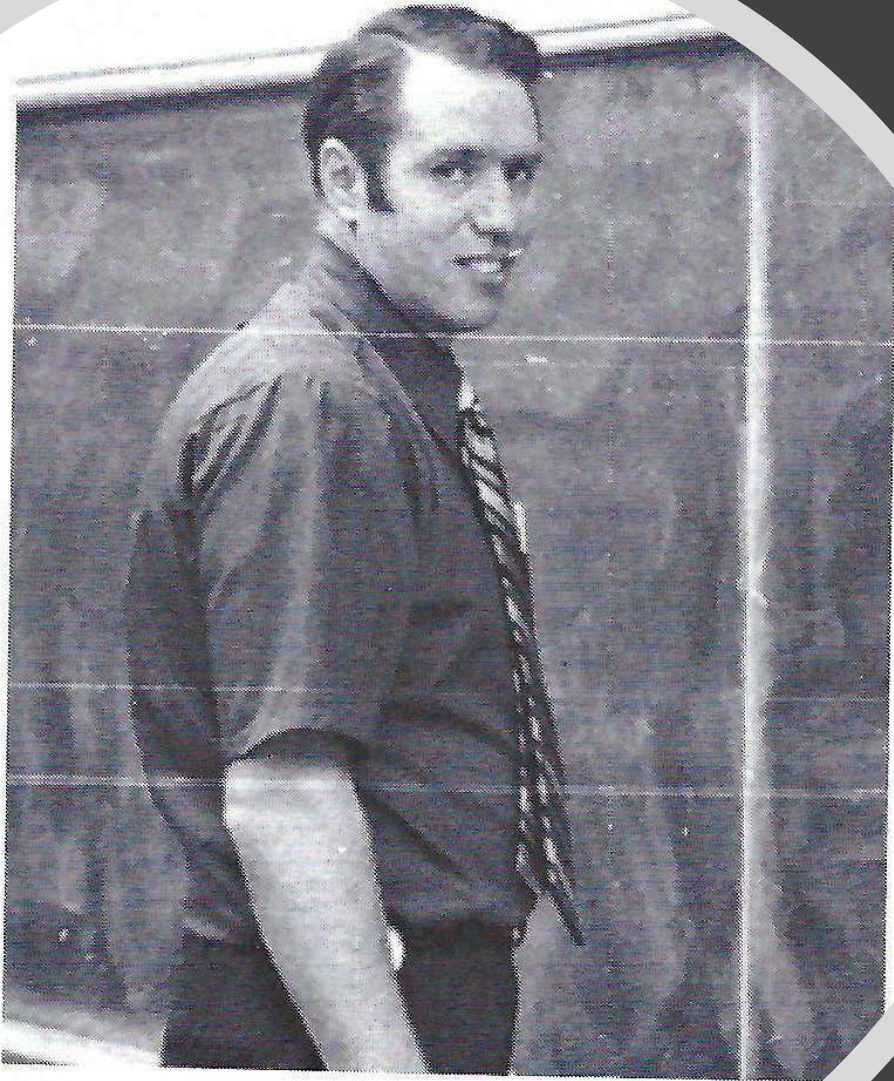
# Know yourself

---

maximize your talent,  
strengths, and skills

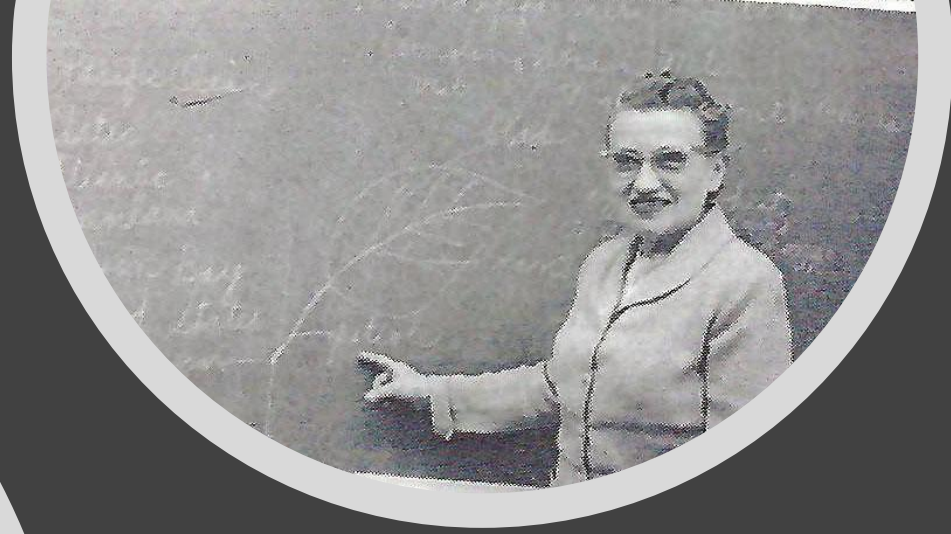






MR. CARL HARDER

Algebra I and II, Advanced Math, Trigonometry



Don't run around building a legacy. Run around making a difference.

Connect your heart with your head.

Your legacy should be a labor of love—not a chore.

Think service  
not success

WHAT'S YOUR  
FACTORS

You need to discover your X factor .

what you have that no one else does – and leverage it

Leaving a  
legacy:  
connecting  
to your  
inner  
superhero

---

A passionate professor's belief that a student is worthy is the equivalent of hours of reading, vigorous discussions, and challenging assignments.

---

**The Student is worthy.**



Do what  
matters now

---

Make your  
busy work  
matter





Bring your best self to work and family.



Start with those closest to you and the ones you spend the most time with  
Seize small opportunities

A photograph of a male teacher and a male student in a school hallway. The teacher, on the right, is wearing a light-colored shirt and a dark tie, and is pointing towards a book held by the student. The student, on the left, is wearing a purple t-shirt and is looking down at the book. The background shows a row of white lockers.

Be An adovate

when a teacher is your advocate:  
you feel the freedom to take risks.  
So you try a different approach, or  
adopt a new mindset.



“The goal of teaching should not be about becoming a facilitator of learning, rather it should be about becoming a partner in learning with your students.”

It is that partnership that opens doors to co-creating a glimpse of *what could be* in a student’s life.

A close-up photograph of three small, rectangular gifts wrapped in light brown paper, each tied with a dark blue ribbon. The gifts are arranged in a row on a wooden surface, possibly a table or a basket. The background is softly blurred, showing green foliage and wooden beams. The text "What you teach is a gift" is overlaid in white, sans-serif font across the center of the image.

What you teach is a gift



# Bonus – Needs in Health Care

Laboratory Technicians

Nursing

Social Work – LCSW & MSW

Respiratory Therapist

EMT-Paramedic

# The Story

## □ Family / Emergency Medicine

- Clarke County Hospital
- Monticello Medical Center

## □ Emergency Medicine

- Sun Coast Hospital

## □ Internal Medicine, Critical Care & Digestive Health

- Sarah Bush Lincoln Health Center
- Carle Physicians Group

## □ Medical Administration

- Carle Health Systems

## □ Medical Education

- Carle Illinois College of Medicine
- University of Illinois



Benton Community Schools



**Largo Medical Center**  
A Teaching Hospital