

University of Northern Iowa

UNI ScholarWorks

Institutional Effectiveness & Planning
Documents

Institutional Effectiveness & Planning

Fall 1979

A Profile of Students Enrolled at the University of Northern Iowa, Fall Semester 1979

University of Northern Iowa

Let us know how access to this document benefits you

Copyright ©1979 University of Northern Iowa

Follow this and additional works at: https://scholarworks.uni.edu/ire_documents



Part of the [Higher Education Commons](#)

Recommended Citation

University of Northern Iowa, "A Profile of Students Enrolled at the University of Northern Iowa, Fall Semester 1979" (1979). *Institutional Effectiveness & Planning Documents*. 36.

https://scholarworks.uni.edu/ire_documents/36

This Article is brought to you for free and open access by the Institutional Effectiveness & Planning at UNI ScholarWorks. It has been accepted for inclusion in Institutional Effectiveness & Planning Documents by an authorized administrator of UNI ScholarWorks. For more information, please contact scholarworks@uni.edu.

Offensive Materials Statement: Materials located in UNI ScholarWorks come from a broad range of sources and time periods. Some of these materials may contain offensive stereotypes, ideas, visuals, or language.

A PROFILE OF STUDENTS
ENROLLED AT THE
UNIVERSITY OF NORTHERN IOWA
FALL SEMESTER 1979

OFFICE OF STUDENT RESEARCH



University of Northern Iowa
Cedar Falls, Iowa 50613
(319) 273-2037

A PROFILE OF STUDENTS
ENROLLED AT THE
UNIVERSITY OF NORTHERN IOWA
FALL SEMESTER 1979

Compiled by Paul C. Kelso
Coordinator of Student Research

Report # 3-80-G

OFFICE OF STUDENT RESEARCH
University of Northern Iowa
Cedar Falls, Iowa
February 1980



TO:

FROM: Paul Kelso, Coordinator of Student Research, UNI

TOPIC: A Profile of Students Enrolled at University of Northern Iowa, Fall Semester 1979

DATE: March 4, 1980

A Profile of Students Enrolled at the University of Northern Iowa, Fall Semester 1979 was compiled to serve as a reference source for individuals who may be interested in information pertaining to University of Northern Iowa students.

The titles for tables on pages 33 and 45 should read as follows:

- p. 33 CUMULATIVE GRADE POINT AVERAGES EARNED BY 630
UNI FRESHMEN MEN DIRECT FROM HIGH SCHOOL FALL
SEMESTER 1979 MEN UTILIZING HIGH SCHOOL RANK IN GRAD-
UATING CLASS AND AMERICAN COLLEGE TEST (ACT) COM-
POSITE STANDARD SCORES

- p. 45 CUMULATIVE GRADE POINT AVERAGES EARNED BY 250
UNI MEN TRANSFERS FROM OTHER COLLEGES FALL SEMESTER
1979 MEN UTILIZING HIGH SCHOOL RANK IN GRADUATING CLASS
AND AMERICAN COLLEGE TEST (ACT) COMPOSITE STANDARD
SCORES

As indicated in the Preface (p. vi), comments pertaining to the information included in the Profile are welcome and may be directed to any member of the student research committee.

TABLE OF CONTENTS

	<u>Page</u>
PREFACE	vi
PROFILE SUMMARY	viii
SECTION I TOTAL STUDENT ENROLLMENT FOR FALL SEMESTER 1979	
Comparative Enrollments Fall Semesters 1979 and 1978	3
Undergraduates and Graduates	
Full-time and Part-time	
Men and Women	
Classification	
Teaching and Liberal and Vocational Arts	
Full Time Equivalents (FTE)	
Resident and Non-Resident	
Head Count and Full-time Equivalent (FTE) and FTE Expressed as a Percentage of Heads.	6
Enrollment by Curricula.	7
Distribution by Curriculum or 9169 Undergraduate Students.	13
Enrollment by Resident and Non-Resident.	14
Enrollment by County of Origin	15
Enrollment by State or Country of Origin	16
Total Enrollment by Race and Sex	17
Comparative Average Ages Fall Semesters 1960-1979.	18
Residence Hall Occupancy	19
Veterans Receiving VA Educational Benefits, Fall Semesters 1973-1979.	20
SECTION II NEW STUDENTS ENTERING UNI FALL SEMESTER 1979	
Part A. FRESHMEN DIRECT FROM HIGH SCHOOL	
Distribution by Month of Application of 2088 Enrolled Students New from High School	23

	<u>Page</u>
Distribution by Size of High School Class for 2088 Enrolled Students New from High School.	24
Distribution by Percentile Rank in High School Graduating Class for 1932 Enrolled Students New from High School .	25
Distribution by American College Composite Test Scores for 1937 Enrolled Students.	26
Distribution by American College Composite Test Score and High School Decile Rank in Class for 1899 Enrolled Students New from High School	27
Profiles of New Students Fall Semesters 1966-1979.	28
Distribution by Curriculum for 2088 Enrolled Students. . .	29
Prospective Academic Majors of New Students Direct from High School	31
First Semester Cumulative Grade Point Averages, ACT Composite Standard Scores and High School Decile Rank for New Students Direct from High School Who Completed Fall Semester 1979.	32
Cumulative Grade Point Averages Earned by Freshmen Men Utilizing High School Rank and ACT Scores	33
Cumulative Grade Point Averages Earned by Freshmen Women Utilizing High School Rank and ACT Scores	34
Distribution by Place of Residence for Fee Purposes for 2088 Enrolled Students New from High School	35
Distribution of New Students by Distance from Campus . . .	36
Number of New Students Entering Directly from Iowa High Schools, by County of Origin.	37
Percent of Total New Students Entering Directly from Iowa High Schools by County of Origin	38
Occupations of Parents of UNI Students New from High School.	39
 Part B. TRANSFERS FROM OTHER COLLEGES AND UNIVERSITIES	
New Transfer Students Entering Fall 1979	43

	<u>Page</u>
Cumulative Grade Point Averages Earned by Freshmen Men Utilizing High School Rank and ACT Scores	45
Cumulative Grade Point Averages Earned by Freshmen Women Utilizing High School Rank and ACT Scores	46
Part C. NEW GRADUATE STUDENTS	
New Graduate Students By Major Area.	49
New Graduate Students By Bachelors Degree College.	50
SECTION III MISCELLANEOUS	
New Undergraduate Students By Term and Year.	53
New Undergraduate Students By Year	54
New Undergraduate Part-time Students as Percent of Total . .	55
Scholarship Summary Data, Fall and Spring Semesters 1967-1978	56
College Level Examination Program (CLEP)	57
CLEP Guideline Groups Compared to Non-Guideline Groups . . .	58

PREFACE

A Profile of Students Enrolled at the University of Northern Iowa, Fall Semester 1979 was prepared by the Office of Student Research from data submitted by members of the University of Northern Iowa Student Research Committee:

Janice Abel, Coordinator of Academic Advising Services
Gerald Bisbey, Research Assistant
Robert Hartman, Associate Director of Housing
Robert Leahy, Registrar
Jack Wielenga, Director of Admissions
Paul C. Kelso, Coordinator of Student Research, Chairperson

Enrollment statistics are based upon enrollments at the end of the third week of instruction of each semester. Although most of the data pertains to the Fall Semester 1979, some information is reported for prior semesters or years.

Any questions pertaining to the information included in the profile may be directed to the office or service which prepared the specific data. Unless otherwise indicated, the information pertaining to total enrollments was prepared by the registrar's office while the office of admissions was responsible for information pertaining to new students.

Suggestions pertaining to modification or clarification of the profile are welcome.

Paul C. Kelso
Coordinator of Student Research
February 1980

PROFILE SUMMARY

All Students

Total enrollment at the University was 10,382 for the Fall Semester 1979, a decrease of 73 (.7%) from the previous year. Undergraduate enrollment increased 42 (.5%) while graduate enrollment decreased 115 (8.7%). Seventy-seven percent of all students were enrolled full-time; however, only 23% of the graduate students were enrolled full-time. Fifty-six percent of all students were women. Forty-one percent of the undergraduates, who had declared majors, were in the teaching program.

The most popular undergraduate majors were: psychology (112), history (106), management (562), accounting (581), marketing (230), office administration (132), early childhood education (137), elementary education - lower grades (262), special education (298), physical education - coaching emphasis (116), music education (193), English (147), industrial technology (111), and biology (110).

The most popular graduate majors were: business administration (145), special education (106), elementary education (35), counseling (31), speech pathology (26), and biology (20).

The average age of undergraduates was 21.3 and of graduates, 30.3 years. Nine thousand nine hundred and eighty-two (96%) of the students were Iowa residents. Two thousand six hundred and fifty (25.5%) of the students were from Black Hawk County and 1194 (22.5%) of the students were from counties contiguous to Black Hawk.

A total of 4965 students, representing 48% of the total enrollment, lived in on-campus residence halls during the Fall Semester 1979. Over one-half of the undergraduate students including 71% of the freshmen, 61% of the sophomores, 49% of the juniors, and 30% of the seniors and about 5% of the graduate students lived in residence halls.

Total enrollment of veterans receiving educational benefits from the veterans administration was 395 students, a decrease of 101 (20%) from the previous fall semester.

Freshmen Direct From High School

Approximately 23% of the total undergraduate enrollment for the Fall Semester 1979 were new students direct from high school.

More than 53% of the entering freshmen completed their applications for admission to UNI before January 31 of their senior year in high school.

Of the entering freshmen, 80% ranked in the top one-half and 55% ranked in the top thirty percent of their high school graduating class, the highest percentages since the Fall Semester 1972.

Approximately 55% of the entering students graduated from high school classes of 200 or less students, while one-fourth graduated from classes of 400 or more students.

Ten percent of the freshmen had ACT Composite Standard Scores of 27 or higher, while 51% earned scores of 21 or higher - slightly lower percentages than the previous year.

About one-fourth of the entering freshmen ranked in the top 30% of their high school graduating class and had ACT Composite Standard Scores of 24 or higher.

On their applications for admission to UNI, 74% of the entering freshmen indicated a preference for liberal or vocational arts curricula compared to 66% in 1978, while 26% indicated preferences for teaching curricula, compared to 34% in 1978.

Although 384 (18%) of the new freshmen did not indicate a prospective academic major, for those who did, the most frequently indicated were: accounting, 285; elementary and middle school education, 162; management, 151; special education, 107; physical education, health, and recreation, 73; business education, 60; social work, 55; home economics, 54; speech, 53; art, 50; music, 50; industrial technology, 48; marketing, 42; and psychology, 41. In addition, 101 new students indicated an interest in pre-professional curricula.

Entering women students ranked higher in their high school graduating class and achieved higher cumulative grade point averages at the end of their first semester at UNI than entering men students; however, the men students had higher ACT Composite Standard Scores than entering women students.

A follow-up study of entering freshmen, for whom high school decile ranks and ACT composite scores were available, revealed the following information at the end of the Fall Semester 1979:

A total of 752 (73%) of entering freshmen women and 405 (64%) of entering freshmen men made a grade point average of 2.00 (C) or higher.

Of the entering freshmen students who ranked in the upper one-half of their high school graduating class, a total of 308 (73%) of the men and 706 (79%) of the women made a grade point average of 2.00 or above.

Of the freshmen who had an ACT composite standard score of 21 or above, a total of 234 (75%) of the men and 411 (88%) of the women had a grade point average of 2.00 or above.

Ninety seven percent of the new students were Iowa residents with 94 counties represented. Approximately 20% were from Black Hawk County, while 65% came from a distance of not more than 100 miles from Cedar Falls. There was a decrease in entering students from Black Hawk County and an increase in students from distances of 100 or more miles from campus.

The entering freshmen came from homes in which 36% of the fathers were employed in professional, technical, or managerial occupations, 16% in agriculture, 9% in machine trades, and 9% in sales and clerical positions.

Thirty nine percent (39%) of the mothers were full time homemakers, 20% were engaged in professional, technical, and managerial occupations, 24% in clerical and sales positions, and 8% in service occupations.

Students Transferring From Other Colleges and Universities

A total of 787 new students transferred from other colleges and universities to UNI, Fall Semester 1979.

Of the 388 (49.3%) who transferred from Iowa two-year colleges, over one-half came from the following colleges: North Iowa Area Community College, Ellsworth Community College, Marshalltown Community College, Iowa Central Community College - Ft. Dodge, Des Moines Area Community College - Ankeny.

Of the 237 (30.1%) who transferred from Iowa four-year colleges, only 67 came from the University of Iowa and Iowa State University, while 170 came from Iowa private four-year colleges.

One hundred fifty eight (20.1%) transferred from out-of-state colleges.

A follow-up study of entering transfer students for whom both high school decile ranks and ACT composite standard scores were available revealed the following information at the end of Fall Semester 1979:

A total of 190 (76%) of the entering transfer men students and 309 (84%) of the entering transfer women students made a grade point average of 2.00 or above.

Of the entering transfer students who ranked in the upper one-half of their high school graduating class, 143 (79%) of the men and 278 (89%) of the women made a grade point average of 2.00 or above.

Of the transfers who had a composite ACT standard score of 21 or above, 131 (82%) of the men and 198 (93%) of the women had a grade point average of 2.00 or above.

New Graduate Students

There were 352 new graduate students, an increase of 8 (2.2%) over the previous year. One hundred and thirty-two (37.5%) received their bachelors degree from UNI, 20 (5.7%) from Iowa State, and 17 (4.8%) from the University of Iowa.

Fourteen (4.0%) earned bachelors degrees at a foreign university or college.

The most popular major areas for new graduate students were: business administration - MBA (56), special education (18), and speech pathology.

Miscellaneous

The total number of new undergraduate students for the 1978-79 year (Summer 1978, Fall 1978, and Spring 1979), was 3615, a decrease of 2% from the previous year. Of the 3615 new students, 2193 (61%) were entering freshmen while 1422 (39%) were new transfers, a 3% increase in the percentage of new transfers over the previous year.

For Fall and Spring Semesters 1978-79 a total of 505 new undergraduates were enrolled on a part-time basis. This represented 14.8% of the total new students, an increase of .6% over the previous year. The percentage of new part-time students has doubled since 1970-71.

Scholarship summary data for fall semesters in recent years, (1976, 1977, and 1978) revealed a slight decrease in average semester hour loads for undergraduate students while the average grade index remained about the same; however, the average graduate student semester hour load decreased about 14% from Fall 1977 to Fall 1978, while the grade point average remained about the same. Spring Semester loads and grade point averages tended to be slightly higher than those for the Fall Semesters.

Of the 694 students who took College Level Examination Program (CLEP) general examinations in 1979, a total of 325 (47%) achieved scores which enabled them to receive college credit. In 1978, only 390 (37%) of the 1051 who took the examinations received college credit.

SECTION I. TOTAL STUDENT ENROLLMENT FOR FALL SEMESTER 1979

COMPARATIVE ENROLLMENTS FALL 1979 AND 1978

UNIVERSITY OF NORTHERN IOWA Fall 1979 Enrollment - Third Week

	Full-time			Part-time			Total		
	M	W	T	M	W	T	M	W	T
<u>Undergraduates - Total</u>	3378	4390	7768	585	816	1401	3963	5206	9169
<u>Graduates - Total</u>	124	153	277	435	501	936	559	654	1213
<u>Total Students in Residence Courses</u>	3502	4543	8045	1020	1317	2337	4522	5860	10382
<u>ALL UNDERGRADUATES</u>									
Seniors	676	833	1509	171	148	319	847	981	1828
Juniors	786	1015	1801	109	133	242	895	1148	2043
Sophomores	744	956	1700	78	138	216	822	1094	1916
Freshmen	1158	1553	2711	107	215	322	1265	1768	3033
Unclassified	12	27	39	117	175	292	129	202	331
Specials	2	6	8	3	7	10	5	13	18
TOTAL	3378	4390	7768	585	816	1401	3963	5206	9169
<u>TEACHING</u>									
Seniors	213	510	723	34	70	104	247	580	827
Juniors	165	498	663	6	26	31	170	524	694
Sophomores	113	328	441	3	22	25	116	350	466
Freshmen	67	86	153	0	4	4	67	90	157
TOTAL	558	1422	1980	42	122	164	600	1544	2144
Percent of Undergraduates									23.4%
Percent of Declared									40.7%
<u>LIBERAL & VOCATIONAL</u>									
Seniors	424	279	703	124	63	187	548	342	890
Juniors	545	416	961	84	71	155	629	487	1116
Sophomores	376	339	715	33	41	74	409	380	789
Freshmen	127	127	254	18	52	70	145	179	324
TOTAL	1472	1161	2633	259	227	486	1731	1388	3119
Percent of Undergraduates									34.0%
Percent of Declared									59.3%
<u>UNDECLARED</u>									
Seniors	39	44	83	13	15	28	52	59	111
Juniors	76	101	177	20	36	56	96	137	233
Sophomores	255	289	544	42	75	117	297	364	661
Freshmen	964	1340	2304	89	159	248	1053	1499	2552
Unclassified	12	27	39	117	175	292	129	202	331
Specials	2	6	8	3	7	10	5	13	18
TOTAL	1348	1807	3155	284	467	751	1632	2274	3906
Percent of Undergraduates									42.6%

Office of the Registrar
September 1979

UNIVERSITY OF NORTHERN IOWA Fall 1978 Enrollment - Third Week

	Full-time			Part-time			Total		
	M	W	T	M	W	T	M	W	T
<u>Undergraduates - Total</u>	3517	4366	7883	507	737	1244	4024	5103	9127
<u>Graduates - Total</u>	135	162	297	462	569	1031	597	731	1328
<u>Total Students in Residence Courses</u>	3652	4528	8180	969	1306	2275	4621	5834	10455
<u>ALL UNDERGRADUATES</u>									
Seniors	676	928	1604	164	152	316	840	1080	1920
Juniors	812	908	1720	87	101	188	899	1009	1908
Sophomores	826	994	1820	70	117	187	896	1111	2007
Freshmen	1194	1519	2713	115	229	344	1309	1748	3057
Unclassified	9	16	25	67	131	198	76	147	223
Specials		1	1	4	7	11	4	8	12
TOTAL	3517	4366	7883	507	737	1244	4024	5103	9127
<u>TEACHING</u>									
Seniors	264	616	880	36	81	117	300	697	997
Juniors	172	421	593	4	26	30	176	447	623
Sophomores	113	325	438	1	15	16	114	340	454
Freshmen	25	50	75	2	4	6	27	54	81
TOTAL	574	1412	1986	43	126	169	617	1538	2155
Percent of U.G.									23.6%
Percent of Declared									43.6%
<u>LIBERAL & VOCATIONAL</u>									
Seniors	399	306	705	125	65	190	524	371	895
Juniors	441	306	747	60	54	114	501	360	861
Sophomores	339	272	611	32	41	73	371	313	684
Freshmen	149	131	280	26	43	69	175	174	349
TOTAL	1328	1015	2343	243	203	446	1571	1218	2789
Percent of U.G.									30.6%
Percent of Declared									56.4%
<u>UNDECLARED</u>									
Seniors	13	6	19	3	6	9	16	12	28
Juniors	199	181	380	23	21	44	222	202	424
Sophomores	374	397	771	37	61	98	411	458	869
Freshmen	1020	1338	2358	87	182	269	1107	1520	2627
Unclassified	9	16	25	67	131	198	76	147	223
Specials		1	1	4	7	11	4	8	12
TOTAL	1615	1939	3554	221	408	629	1836	2347	4183
Percent of U.G.									45.8%

Office of the Registrar
September 1978

COMPARATIVE ENROLLMENTS FALL 1979 AND 1978

UNIVERSITY OF NORTHERN IOWA Fall 1979 Enrollment - Third Week

	Full-time			Part-time			Total		
	M	W	T	M	W	T	M	W	T
TEACHING (Accepted)									
Seniors	177	487	664	26	59	85	203	546	749
Juniors	94	296	390	1	13	14	95	309	404
Sophomores	4	10	14	0	1	1	4	11	15
Freshmen			0			0			0
TOTAL	275	793	1068	27	73	100	302	866	1168
TEACHING (Applied)									
Seniors	36	23	59	8	11	19	44	34	78
Juniors	71	202	273	4	13	17	75	215	290
Sophomores	109	318	427	3	21	24	112	339	451
Freshmen	67	86	153	0	4	4	67	90	157
TOTAL	283	629	912	15	49	64	298	678	976
ALL GRADUATES									
Upper	31	21	52	123	116	239	154	137	291
Lower	93	132	225	311	386	697	404	518	922
Source									
UNI	54	69	123	163	215	378	217	284	501
Other Iowa Colleges	29	31	60	108	131	239	137	162	299
Non-Iowa Colleges	41	53	94	152	118	270	193	171	364
Not available			0	12	37	49	12	37	49
ALL UNDERGRADUATES									
Upper	1462	1848	3310	280	281	561	1742	2129	3871
Lower	1916	2542	4458	305	535	840	2221	3077	5298

Office of the Registrar
September 1979

UNIVERSITY OF NORTHERN IOWA Fall 1978 Enrollment - Third Week

	Full-time			Part-time			Total		
	M	W	T	M	W	T	M	W	T
TEACHING (Accepted)									
Seniors	231	577	808	29	74	103	260	651	911
Juniors	91	261	352	2	10	12	93	271	364
Sophomores	1		1		3	3	1	3	4
Freshmen			0			0			0
TOTAL APPROVED	323	838	1161	31	87	118	354	925	1279
TEACHING (Applied)									
Seniors	33	39	72	7	7	14	40	46	86
Juniors	81	160	241	2	16	18	83	176	259
Sophomores	112	325	437	1	12	13	113	337	450
Freshmen	25	50	75	2	4	6	27	54	81
TOTAL NOT APPROVED	251	574	825	12	39	51	263	613	876
ALL GRADUATES									
Upper	34	32	66	171	117	288	205	149	354
Lower	101	130	231	291	452	743	392	582	974
Source									
UNI	64	71	135	183	297	480	247	368	615
Other Iowa Colleges	30	41	71	125	144	269	155	185	340
Non-Iowa Colleges	41	50	91	154	128	282	195	178	373
ALL UNDERGRADUATES									
Upper	1488	1836	3324	251	253	504	1739	2089	3828
Lower	2029	2530	4559	256	484	740	2285	3014	5299

Office of the Registrar
September 1978

COMPARATIVE ENROLLMENTS FALL 1979 AND 1978

University of Northern Iowa
Headcount and FTE
(on campus enrollment)

	Headcount Fall 1979		FTE Fall 1979	
	Resident	Non-Resident	Resident	Non-Resident
Undergraduate				
Freshmen	2950	83	2641	75
Sophomore	1865	51	1733	48
Sub-total (lower division)	4815	134	4374	123
Junior	1994	49	1869	45
Senior	1772	56	1601	51
Sub-total (upper division)	3766	105	3470	96
Unclassified/Special students	316	33	117	20
TOTAL Undergraduates	8897	272	7961	239
First Professional	N/A	N/A	N/A	N/A
Graduate				
Masters	856	66	517	73
Advanced	271	20	140	16
TOTAL Graduates*	1127	86	657	89
GRAND TOTAL	10024	358	8619	328

*Gross totals (Heads 1213, FTE 746) includes 180 (FTE = 87) post-baccalaureate students, irrespective of residency, enrolled in undergraduate courses only.

University of Northern Iowa
September 1979

University of Northern Iowa
Headcount and FTE
(on campus enrollment)

	Headcount Fall 1978		FTE Fall 1978	
	Resident	Non-Resident	Resident	Non-Resident
Undergraduate				
Freshmen	2971	86	2680	77
Sophomore	1957	50	1871	51
Sub-total (lower division)	4928	136	4551	128
Junior	1846	62	1758	59
Senior	1863	57	1684	53
Sub-total (upper division)	3709	119	3442	112
Unclassified/Special students	222	13	81	8
Total Undergraduates	8859	268	8074	248
First Professional	N/A	N/A	N/A	N/A
Graduate				
Masters	912	62	540	59
Advanced	331	23	184	18
Total Graduate*	1243	85	724	77
Grand Total	10102	353	8798	325

*Gross totals (Heads 1328, FTE 801) includes 156 (FTE = 68) post-baccalaureate students, irrespective of residency, enrolled in undergraduate courses only.

University of Northern Iowa
September 1978

**HEADS, FTE'S, AND FTE'S EXPRESSED AS A PERCENTAGE OF HEADS
FALL SEMESTERS - THIRD WEEK**

		<u>1974</u>	<u>1975</u>	<u>1976</u>	<u>1977</u>	<u>1978</u>	<u>1979</u>
UNDERGRADUATES							
LD	-Heads	4566	4985	5274	5654	5299	5298
	-FTE	4250	4607	4815	5132	4768	4634
	-%	93.1	92.4	91.3	90.8	90.0	87.5
UD	-Heads	3105	3027	3106	3305	3828	3871
	-FTE	2961	2876	2936	3081	3554	3566
	-%	95.4	95.0	94.5	93.2	92.8	92.1
TOTAL	-Heads	7671	8012	8380	8959	9127	9169
	-FTE	7211	7483	7751	8213	8322	8201
	-%	94.0	93.4	92.5	91.7	91.2	89.4
GRADUATES							
MA	-Heads	894	1107	1137	1192	974	922
	-FTE	682	820	790	813	599	590
	-%	76.3	74.1	69.5	68.2	61.5	64.0
ADV.	-Heads	125	168	182	191	354	291
	-FTE	61	86	83	85	202	156
	-%	48.8	51.2	45.6	44.5	57.1	53.6
TOTAL	-Heads	1019	1275	1319	1383	1328	1213
	-FTE	743	906	873	898	801	746
	-%	72.9	71.1	66.2	64.9	60.3	61.5
ALL STUDENTS							
GRAND TOTAL	-Heads	8690	9287	9699	10342	10455	10382
	-FTE	7954	8389	8624	9111	9123	8947
	-%	91.5	90.3	88.9	88.1	87.3	86.2

Dividing line indicates the change in the way UNI students are classified which was effective with the 1978 summer session.

	← 1977	1978 →
Lower Division	0 - 63 s.h.	0 - 59 s.h.
Upper Division	64 s.h. →	60 s.h. →
MA Graduates	BA degree	0 - 30 s.h.
Advanced Graduates	MA degree	31 s.h. →

COLLEGE OF EDUCATION

CODE	DECLARED MAJOR	FRESHMEN		SOPHOMORE		JUNIOR		SENIOR		UNDERGRAD TOTALS			GRADUATE			GRAND TOTAL
		MEN	WOM	MEN	WOM	MEN	WOM	MEN	WOM	MEN	WOM	TOTAL	MEN	WOM	TOTAL	
21X	ELEM ED - SPECIAL ED DELAYED						1	1	11	1	12	13				13
210	EARLY CHILDHOOD EDUCATION		3	1	35		35	2	55	3	134	137		5	5	142
211	ELEMENTARY	2		4	20	6	22	9	23	21	65	86	6	29	35	121
213	ELEM ED - LOWER GRADES		13	5	64	6	84	4	89	15	247	262				262
214	ELEM ED - SPEC MENTAL RETARD												1	3	4	4
215	EDUCATION OF GIFTED															
216	ELEM ED - READING		2				31		41		83	83				83
217	ELEM ED - SPEC EMOTIONALLY I															
218	ELEM ED - READING & LANG ART						3		7		10	10		3	3	13
219	ELEM ED - SPECIAL EDUCATION		13	3	74	7	97	8	96	18	280	298		1	1	299
220	JR HIGH SCHOOL EDUCATION	2	2	1	4	6	18	9	24	18	48	66				66
231	READING - REEDIAL												1	13	14	14
233	READING - DEV. ELEMENTARY													5	5	5
234	READING - DEV. SECCDARY												1	2	3	3
235	READING CLINICIAN													1	1	1
240	SPECIAL EDUCATION												15	91	106	106
244	SPEC ED - GIFTED															
245	SPEC ED - ADMIN												1	7	8	8
246	SPEC ED - VISUALLY IMPAIRED															
247	CURRICULUM CONSULTANT												1		1	1
261	ADM & SUPERV - SUPERINTENDEN												5	1	6	6
262	ADM & SUPERV - ELEM PRINCIPA												15	3	18	18
263	ADM & SUPERV - SEC PRINCIPAL												17	1	18	18
264	ADM & SUPERV - ELEM SUPERVIS												1		1	1
266	ADM & SUPERV - SCHOOL BUS MG															
270	COMMUNICATIONS MEDIA												11		11	11
271	CURR & SUPERV - CURR CLERKIA													1	1	1
272	CURR & SUPERV - ELEM CONSULT															
273	CURR & SUPERV - SEC CONSULT															
275	CURR & SUPERV - EDJCA MEDIA												5	1	6	6
290	COUNSELING												15	16	31	31
281	STJ PERS SERV - ELEM GUID COU												2	5	7	7
282	STJ PERS SERV - SEC GUID COU												8	9	17	17
283	STJ PERS SERV - COL STJ PERS												9	6	15	15
284	STJ PERS SERV - CIP GUID. SE															
290	EDUCATIONAL PSYCHOLOGY															
293	SCHOOL PSYCHOLOGY												4	13	17	17
295	EVALUATION															
297	ED PSYCHOLOGY-TEACHING												7	1	8	8
300	SAFETY EDUCATION			2		1	1	3	1	6	2	8				8
350	LIBRARY SCIENCE												4	7	11	11
370	PHYSICAL EDUCATION												11	8	19	19
371	RECREATION-ADMINISTRATION					1			4	6	5	6				11
372	RECREATION-URBAN															4
373	RECREATION-INDOOR					1				3	1	3				4
374	RECREATION-PRUG SUPERVISOR															16
375	HEALTH EDUCATION				1					3	1	3				4
376	THERAPUTIC															19
380	PHYSICAL EDUCATION, MEN															19
382	PHYSICAL ED & HEALTH - MEN															28
390	PHYSICAL EDUCATION, WOMEN															11
411	HEALTH EDUCATION			2	2	1	6	2	5	5	13	18				18
412	COMMUNITY HEALTH EDUCATION		1		3	1	7		2	1	13	14				14
420	PHYSICAL EDUCATION			3	3	4	2		1	8	5	13				13
421	PE - EMPHASIS AQUATIC				1	1	2		1	2	4	6				6
422	PE - EMPHASIS COACHING	6	3	13	10	21	21	19	23	59	57	116				116
423	PE - EMPHASIS DANCE						1				1	1				1
424	PE - EMPHASIS ELEMENTARY		1	1	2		2		6	1	11	12				12
425	PE - EMPHASIS SPEC EDUCATIO.		1	1	1	1	1		3	2	6	8				8
430	RECREATION															
431	REC - EMPHASIS ADMINISTRATIO			2	3	4	4		4	3	10	10				20
432	REC - EMPHASIS URRAN															3
433	REC - EMPHASIS OUTDOOR															7
435	REC - EMPHASIS PRUG SUPERVIS		1	1	4	4	3		1	5	6	13				19
436	REC - EMPHASIS THERAPEUTIC		4	1	3	3	14		3	13	7	39				46
COLLEGE TOTALS																
BY SEX		10	47	40	249	78	364	112	462	240	1122	1362	140	240	380	1742
BY CLASSIFICATION			57		289		442		574						380	1742

COLLEGE OF SOCIAL AND BEHAVIORAL SCIENCES

CODE	DECLARED MAJOR	FRESHMEN		SOPHOMORE		JUNIOR		SENIOR		UNDERGRAD TOTALS			GRADUATE			GRAND TOTAL
		MEN	WOM	MEN	WOM	MEN	WOM	MEN	WOM	MEN	WOM	TOTAL	MEN	WOM	TOTAL	
310	HOME ECONOMICS				1		1		3		5	5		12	12	17
311	HOME EC - VOCATIONAL	3			22		28	1	25	1	78	79				79
312	HOME EC BUS - FOOD & NUTRIT	2			5		8		6		21	21	1	1		22
313	HOME EC BUS - CLOTH & TEXTIL	6		1	16		18		11	1	51	52				52
314	HOME EC BUS - MSG & INT DESI						4		9		13	13				13
315	HOME EC - GENERAL				2		3		5		10	10	1	1		11
316	ART - EMPHASIS	1		1			4		4	1	9	10				10
317	BEHAVIORAL SCIENCE - EMPHASI						1				1	1				1
318	HOME ECONOMICS IN FAMILY LIF															
319	BUSINESS - EMPHASIS				10		11		8		33	33				33
400	GENERAL PSYCHOLOGY	1		12	21	14	29	19	16	45	67	112	1		1	113
45X	SOCIAL WORK/POTENTIAL	8		5	33	2	23	1	1	8	62	70				70
450	SOCIAL WORK	1			6	8	32	8	42	16	81	97	1	1		98
451	SOCIAL WORK - SOCIOLOGY								1		1	1				1
452	SOCIAL WORK - SOCIAL PSYCH								1		1	1				1
453	SOCIAL WORK - HOME ECONMICS															
900	SOCIAL SCIENCE	1		4	3	3	2	9	6	17	11	28	4	2	6	34
920	ECONOMICS				7	15	3	10	2	32	5	37				37
960	POLITICAL SCIENCE	3		7	1	20	9	19	7	48	17	65	5	2	7	72
960	HISTORY	7		10	4	31	10	33	11	81	25	106	12	5	17	123
970	GEOGRAPHY	2		1	1	1	1	7	1	11	3	14	2		2	16
980	SOCIOLOGY	1		1	7	11	14	25	8	38	29	67	6	4	10	77
990	ANTHROPOLOGY		1		3	2	1	3	4	5	9	14				14
COLLEGE TOTALS																
BY SEX		14	27	44	132	107	202	134	171	304	532	836	30	28	58	894
BY CLASSIFICATION			41		181		309		305						58	894

SCHOOL OF BUSINESS

CODE	DECLARED MAJOR	FRESHMEN		SOPHOMORE		JUNIOR		SENIOR		UNDERGRAD TOTALS			GRADUATE			GRAND TOTAL
		MEN	WOM	MEN	WOM	MEN	WOM	MEN	WOM	MEN	WOM	TOTAL	MEN	WOM	TOTAL	
150	MANAGEMENT	27	11	88	40	166	56	142	32	423	139	562				562
151	BUSINESS EDUCATION		3		7		6		8		24	24	2	7	9	33
152	BUSINESS	16	8	35	33	131	89	98	71	330	251	581	9	7	16	597
153	MARKETING	13	1	33	14	64	27	64	17	171	59	230		1	1	231
154	OFFICE ADMINISTRATION		5		31		43		7	14	118	132				132
155	SCHOOL BUSINESS MANAGEMENT															
156	BUSINESS EDUCATION DISTRIBUTIVE	2	2		2	5	2	2	6	9	12	21				21
157	BUSINESS ADMINISTRATION												117	28	145	145
COLLEGE TOTALS																
BY SEX		55	30	208	177	371	223	313	173	947	603	1550	128	43	171	1721
BY CLASSIFICATION			85		385		594		486						171	1721

COLLEGE OF HUMANITIES AND FINE ARTS

CODE	DECLARED MAJOR	FRESHMEN		SOPHOMORE		JUNIOR		SENIOR		UNDERGRAD TOTALS			GRADUATE			GRAND TOTAL
		MEN	WOM	MEN	WOM	MEN	WOM	MEN	WOM	MEN	WOM	TOTAL	MEN	WOM	TOTAL	
530	SPEECH	2	1	5	3	1	7	5	5	13	16	29	2	3	5	34
501	SPEECH INTERPRETATION				2			1	3	1	5	6				6
502	SPEECH, PUBLIC ADDRESS	1		1						2		2				2
533	SPEECH (THEATRE)	3	2	9	5	11	12	9	8	31	27	58				58
504	SPEECH (COMMUNICATION)						1	1		1	1	2				2
505	SPEECH - RADIO-TV	1	1	9	9	26	6	14	4	50	20	70				70
576	SPEECH - PUBLIC RELATIONS	3		9	17	12	19	4	4	28	40	68				68
510	SPEECH PATHOLOGY		3	1	20		22	2	23	3	68	71	4	22	26	97
515	AUDIOLOGY													2	2	2
520	MUSIC			3	2	1	4	2	3	6	9	15		6	6	21
521	MUSIC EDUCATION	36	32	24	19	14	20	25	23	99	94	193	4	4	8	201
522	MUSIC - THEORY - COMPOSITION												2		2	2
523	MUSIC HISTORY															
524	MUSIC PERFORMANCE			1	4	3	2	4	3	8	9	17	2	3	5	22
525	MAJOR IN CONDUCTING	1	2	2	3		1			3	6	9				9
526	MUSIC THEATRE			1					1	1	1	2				2
600	ART	2	4	5	11	13	25	15	22	35	62	97	6	10	16	113
601	ART-DESIGN						1			1	1	1				1
635	ART	2	6	7	11	3	6	7	5	19	28	47				47
676	ART		1	1	1	1	1	1	3	2	6	8				8
620	ENGLISH	2	5	5	27	11	39	16	42	34	113	147	5	13	18	165
622	ENGLISH/FRENCH															
623	ENGLISH - COMM. COLLEGE												2	1	3	3
624	ENGLISH/GERMAN															
628	ENGLISH/SPANISH															
629	ENGLISH AS A FOREIGN LANG				2		2	2	4	2	8	10	2	2	4	14
630	LINGUISTICS						1				1	1		1	1	2
640	RELIGION	1		2	1	3		2		8	1	9				9
645	PHILOSOPHY & RELIGION	1		2		1		1		4	1	5				5
650	PHILOSOPHY	1		1		6	1	1	1	9	2	11				11
692	TEFL/FRENCH												1	2	3	3
694	TEFL/GERMAN												3	2	5	8
698	TEFL/SPANISH		1		1				1		3	3				3
700	MAJOR IN TWO LANGUAGES															
720	FRENCH				2	2	4	2	3	6	9	13	2	4	6	19
740	GERMAN		1		2		3	1	2	1	8	9	2	2	4	13
760	SPANISH	1	1	1	11	1	15	3	15	6	42	48	3	6	9	57
COLLEGE TOTALS																
BY SEX		57	60	88	153	104	193	117	175	370	581	951	40	83	123	1074
BY CLASSIFICATION			117		241		301		292						123	1074

CODE	DECLARED MAJOR	FRESHMEN		SOPHOMORE		JUNIOR		SENIOR		UNDERGRAD TOTALS			GRADUATE			GRAND TOTAL
		MEN	WOM	MEN	WOM	MEN	WOM	MEN	WOM	MEN	WOM	TOTAL	MEN	WOM	TOTAL	
330	INDUSTRIAL ARTS	5		17	2	19	1	40	1	81	4	85	14		14	99
331	INDUSTRY	3	1	20	1	29	1	26	2	78	5	83				83
333	TRADE & INDUSTRIAL EDUC: BT			2		1		1		4		4				4
335	TECHNICAL INSTITUTE EDUC: BT					1		2		3		3				3
337	TECHNOLOGY	9	2	30	1	36	2	31		106	5	111	13	5	18	129
338	CONSTRUCTIVE TECHNOLOGY			1		2		1		4		4	9		9	13
330	MATHEMATICS			5	6	4	10	6	9	15	25	40	8	2	10	50
305	MATHEMATICS FOR ELEM SCHLUL			2		3	1	1		6	1	7	2	1	3	10
306	MATHEMATICS 3 (COMPUTATIONAL)	1		2						3		3				3
307	MATHEMATICS C				1	1				1	1	2				2
308	MATHEMATICS D	1	1	4	3	9	6	12	7	26	17	43				43
320	SCIENCE	3	6	11	16	8	21	9	5	31	48	79	3	2	5	84
321	SCIENCE EDUCATION			2		1	1	1		4	1	5	1	2	3	8
322	SCIENCE: ENV/CONS EMPHASIS			1						1		1				1
340	BIOLOGY	2	2	13	3	27	17	30	11	72	38	110	12	8	20	130
341	BIOLOGY-B					1			1	1	1	2				2
342	BIOLOGY "D" (INDIV PROGRAM)	1								1		1				1
343	BIOLOGY C			4		3	5	2	1	9	6	15				15
363	CHEMISTRY	1		5	2	6	5	8	4	20	11	31	3	2	5	36
361	CHEMISTRY - B	1		4	1	3	2	3		11	3	14				14
362	CHEMISTRY - MARKETING			1			2	1		2	2	4				4
370	EARTH SCIENCE	2			1			1	2	3	3	6		1	1	7
371	GEOLOGY			2	1	3	3	2		7	4	11				11
383	PHYSICS					1		2		3		3	1		1	4
381	PHYSICS A			1	1			1		2	1	3				3
382	PHYSICS B	1		1		3		3	1	8	1	9				9
COLLEGE TOTALS																
BY SEX		30	12	128	44	161	77	183	44	502	177	679	66	23	89	768
BY CLASSIFICATION			42		172		238		227						89	768

ENROLLMENT BY CURRICULA FOR FALL 1979

DATE 09/28/79

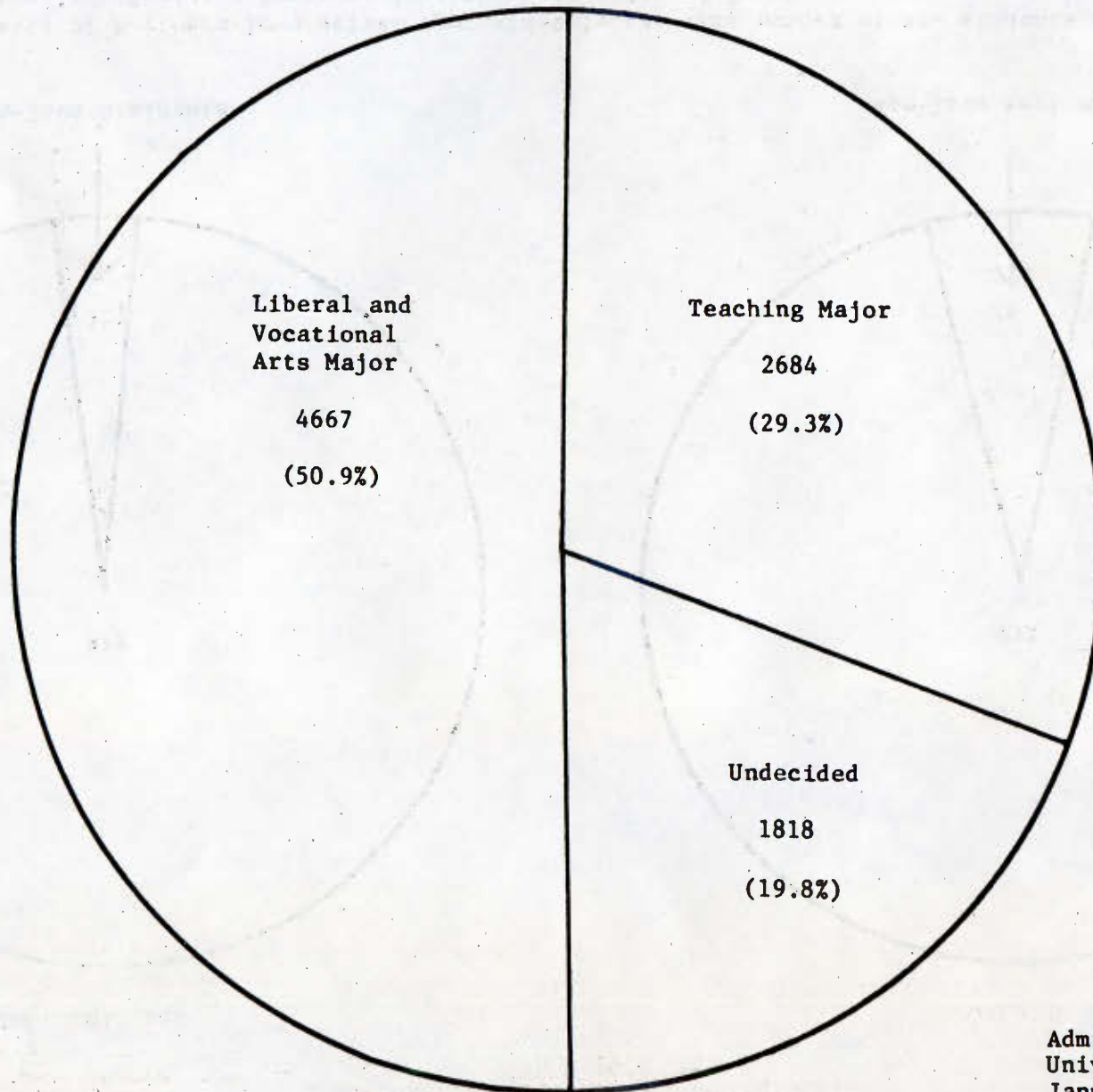
CODE	DECLARED MAJOR	FRESHMEN		SOPHOMORE		JUNIOR		SENIOR		UNDERGRAD TOTALS			GRADUATE			GRAND TOTAL
		MEN	WOM	MEN	WOM	MEN	WOM	MEN	WOM	MEN	WOM	TOTAL	MEN	WOM	TOTAL	
	INTERDISCIPLINARY															
005	GENERAL STUDIES	1	2	8	4	4	7	6	5	19	18	37				37
006	GENERAL STUDIES FOR NURSES						5		1		6	6				6
630	HUMANITIES			1				3	3	4	3	7				7
707	RUSSIAN AREA STUDIES															
912	ASIAN STUDIES					1				1		1				1
913	AMERICAN STUDIES				1						1	1				1
914	LATIN AMERICAN STUDIES										1	1				1

ENROLLMENT BY CURRICULA FOR FALL 1979

DATE 09/28/79

CODE	DECLARED MAJOR	FRESHMEN		SOPHOMORE		JUNIOR		SENIOR		UNDERGRAD TOTALS			GRADUATE			GRAND TOTAL
		MEN	WOM	MEN	WOM	MEN	WOM	MEN	WOM	MEN	WOM	TOTAL	MEN	WOM	TOTAL	
	INDIVIDUAL STUDIES															
001	INDIVIDUAL STUDIES		1			4	2	1	4	5	7	12				12
	PRE-PROFESSIONALS	54	107	23	21	7	10	1	1	85	139	224				224
	UNDECLARED	1046	1433	290	334	73	96	17	9	1426	1927	3353	139	194	333	3686
	UNCLASSIFIED									118	197	315				315
	SPECIAL									5	13	18				18

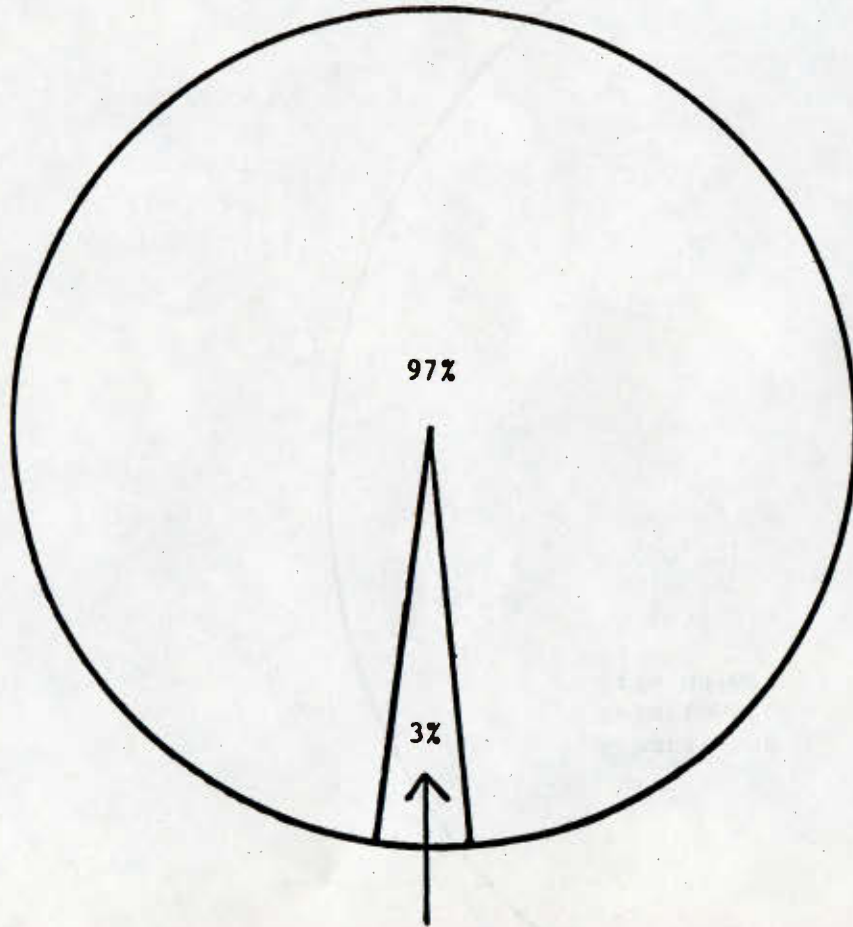
DISTRIBUTION BY CURRICULUM OF 9169 UNDERGRADUATE STUDENTS
ENROLLED FALL SEMESTER 1979



Admissions Office
University of Northern Iowa
January 1980

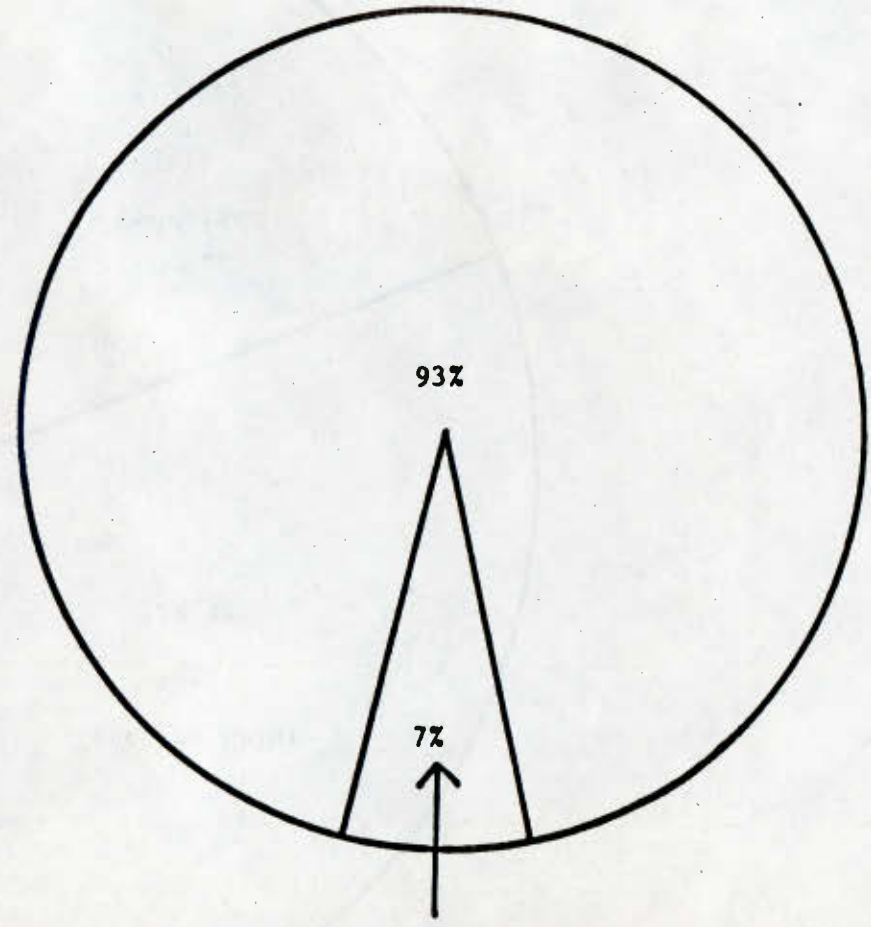
ENROLLMENT BY RESIDENT & NON-RESIDENT
FALL 1979

UNDERGRADUATE



Non-Iowa Residents

GRADUATE



Non-Iowa Residents

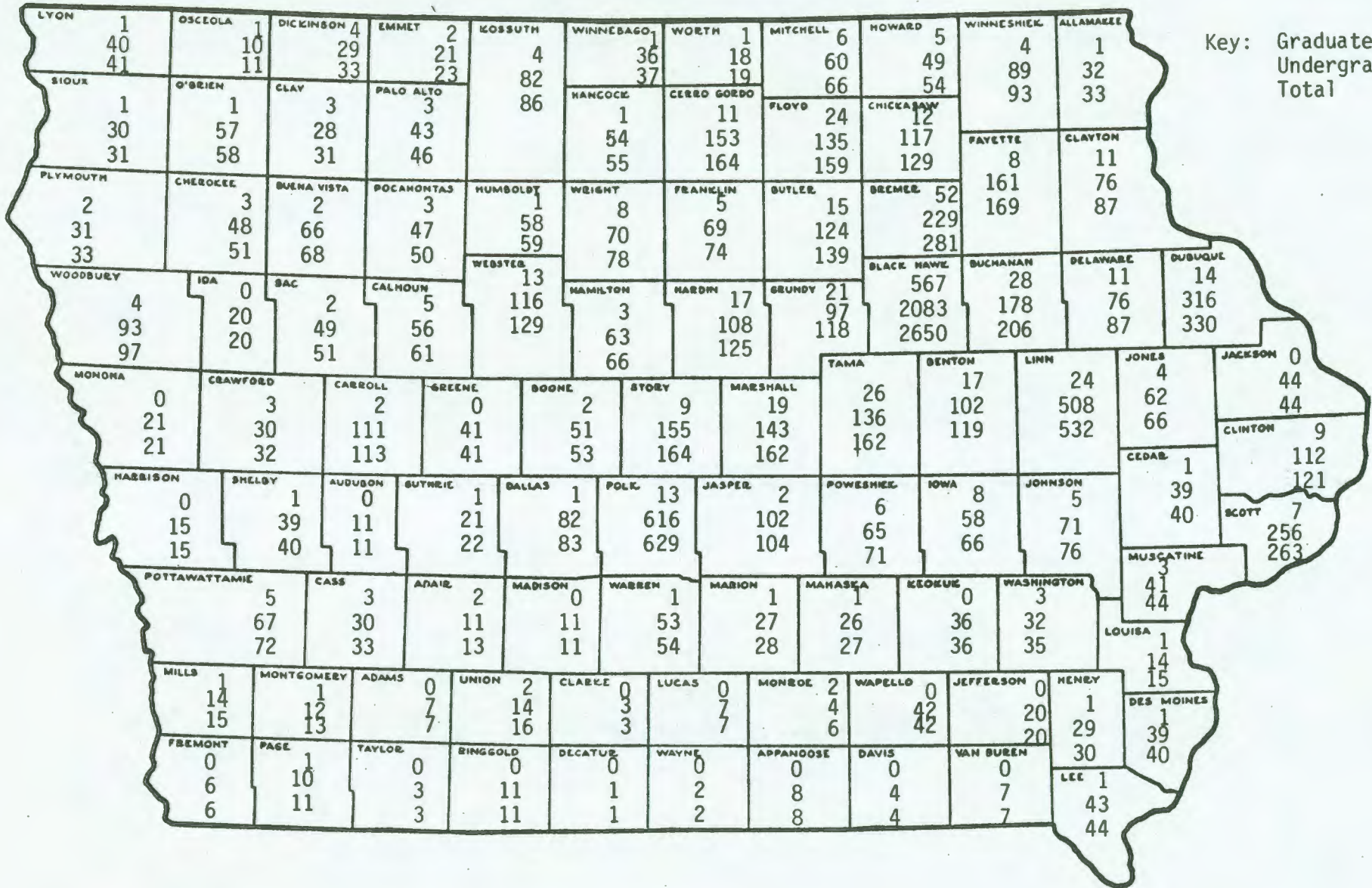
The University of Northern Iowa serves approximately the same number of new students entering directly from Iowa Senior classes as does the University of Iowa.

The undergraduate non-Iowa student population is approximately 3%.

The graduate non-Iowa student population is approximately 7%.

UNI FALL 1979 ENROLLMENT
BY COUNTY OF ORIGIN

Key: Graduates
Undergraduates
Total



ENROLLMENT BY STATE OR COUNTRY OF ORIGIN - FALL 1979

	Graduates			Undergraduates			Total		Tot
	Men	Wom	Tot	Men	Wom	Tot	Men	Wom	
Alabama				1		1	1		1
Arizona				1		1	1		1
Arkansas	1	1	2	1		1	2	1	3
California	2	1	3	5	4	9	7	5	12
Colorado	1		1	4	1	5	5	1	6
Connecticut					1	1		1	1
Delaware		1	1					1	1
Florida				2	2	4	2	2	4
Georgia	2	2	4	1	3	4	3	5	8
Idaho				1	1	2	1	1	2
Illinois	3	5	8	30	43	73	33	48	81
Indiana		1	1	3	3	6	3	4	7
Iowa	514	605	1,119	3,792	5,071	8,863	4,306	5,676	9,982
Kansas				6	4	10	6	4	10
Kentucky		1	1		1	1		2	2
Louisiana				1		1	1		1
Maryland				2	2	4	2	2	4
Massachusetts	2		2		1	1	2	1	3
Michigan				1	2	3	1	2	3
Minnesota	2	5	7	34	17	51	36	22	58
Mississippi		2	2					2	2
Missouri		1	1	4	12	16	4	13	17
Montana		1	1		1	1		2	2
Nebraska	4		4	7	6	13	11	6	17
New Hampshire					1	1		1	1
New Jersey	1		1	5	1	6	6	1	7
New Mexico	1		1		1	1	1	1	2
New York	4	4	8	4		4	8	4	12
North Carolina	1		1	1		1	2		2
North Dakota	1	2	3				1	2	3
Ohio	1	2	3	3	4	7	4	6	10
Oklahoma		1	1	1	2	3	1	3	4
Oregon	1		1				1		1
Pennsylvania	1	1	2	2		2	3	1	4
South Carolina	1		1	1	1	2	2	1	3
South Dakota		1	1	4	2	6	4	3	7
Tennessee		2	2					2	2
Texas	1		1	7	1	8	8	1	9
Vermont					1	1		1	1
Virginia				3		3	3		3
Washington	1	1	2				1	1	2
Wisconsin	2	3	5	19	3	22	21	6	27
Hawaii					1	1		1	1
District of Columbia	1		1	2		2	3		3
U. S. Poss. - C. Z., Guam, P.R.				1	1	2	1	1	2
Argentina	1		1				1		1
Austria		1	1					1	1
Botswana					1	1		1	1
Brazil					1	1		1	1
Canada		1	1					1	1
Chile		1	1					1	1
Denmark					1	1		1	1
Ecuador		1	1					1	1
Finland				1		1	1		1
West Germany					1	1		1	1
Greece				1		1	1		1
Guyana		1	1					1	1
Hong Kong	1		1				1		1
Iran	3		3	7	1	8	10	1	11
Israel					1	1		1	1
Jamaica					1	1		1	1
Japan		1	1					1	1
Korea		1	1		1	1		2	2
Liberia	1	1	2				1	1	2
Nacaragua					1	1		1	1
Nigeria	3		3	1		1	4		4
Saudi Arabia	1		1				1		1
Sweden				2	1	3	2	1	3
Switzerland	1		1				1		1
Taiwan		2	2					2	2
Thailand		1	1	1	1	2	1	2	3
Uruguay					1	1		1	1
Western Samoa				1		1	1		1
Totals	559	654	1,213	3,963	5,206	9,169	4,522	5,860	10,382

DISTRIBUTION OF TOTAL UNDERGRADUATE STUDENT ENROLLMENT
BY RACE AND SEX
University of Northern Iowa
Fall 1979

Race/Ethnicity	UNI	
	Male	Female
All Other	3820	5050
Black	97	113
American Indian	11	6
Asian	11	11
Hispanic	14	18
Non-Res. Alien	<u>14</u>	<u>12</u>
TOTAL	3967	5210

DISTRIBUTION OF TOTAL GRADUATE STUDENT ENROLLMENT
BY COLLEGE, RACE, AND SEX
University of Northern Iowa
Fall 1979

	<u>All Other</u>		<u>Black</u>		<u>Indian</u>		<u>Asian</u>		<u>Hispanic</u>		<u>Non-Res. Alien</u>	
	M	F	M	F	M	F	M	F	M	F	M	F
Social & Behavioral Sciences	27	25		2					2	1	1	
Business	117	37	3				3	3		1	5	2
Education	133	220	6	13		1		1	1	2		3
Humanities & Fine Arts	37	73	1	5						2	2	4
Natural Sciences	59	22	5								2	1
Non-Degree	<u>144</u>	<u>228</u>	<u>9</u>	<u>6</u>			<u>2</u>	<u>2</u>				<u>1</u>
UNI TOTALS	517	605	24	26	0	1	5	6	3	6	10	11

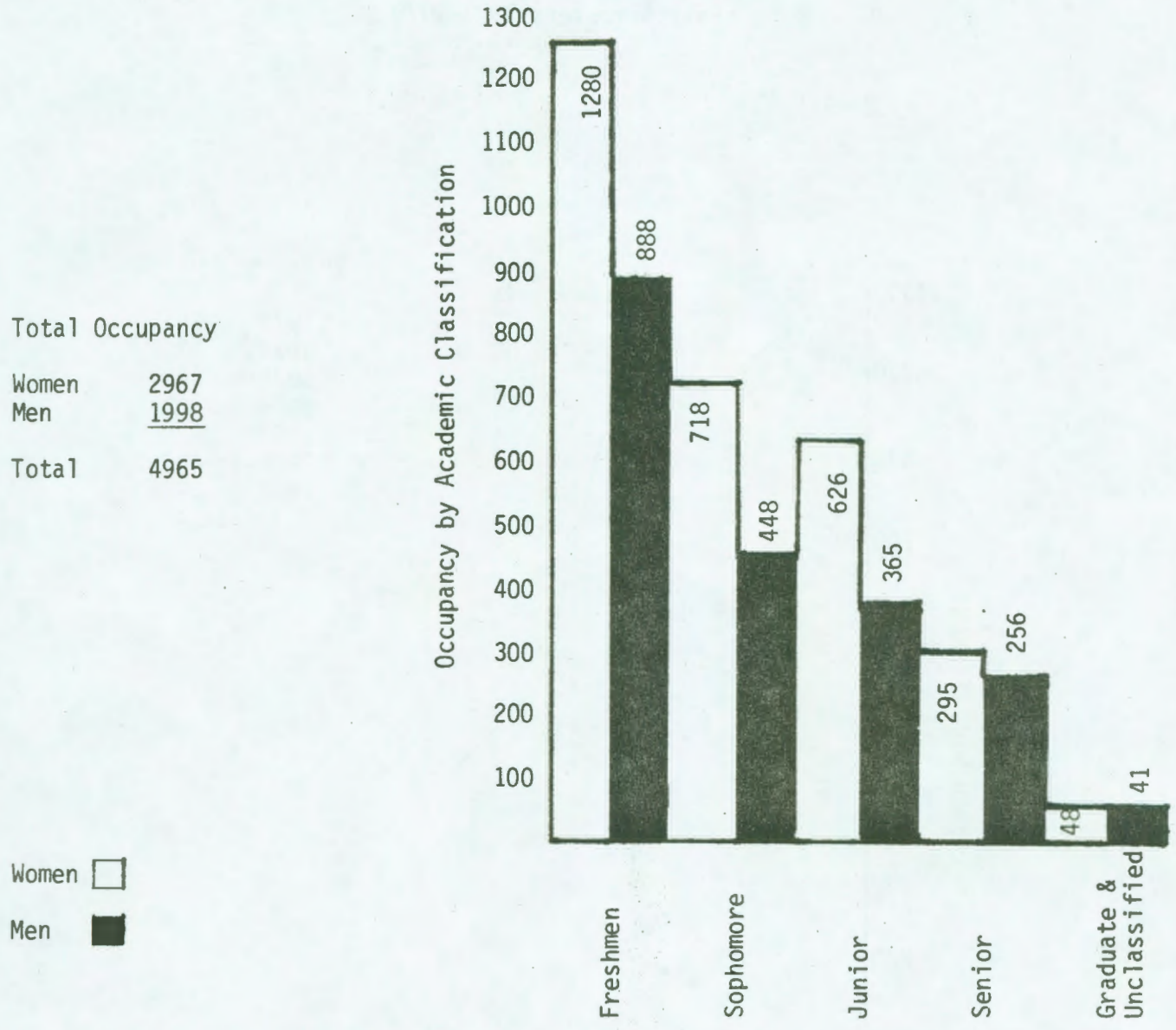
COMPARATIVE AVERAGE AGES FALL SEMESTERS 1960-1979

	Graduate			Undergraduate			Total		
	M	W	T	M	W	T	M	W	T
ALL									
1979	29.4	31.1	30.3	21.1	21.4	21.3	22.2	22.5	22.3
1978	30.4	30.6	30.5	21.0	21.2	21.2	22.3	22.4	22.4
1977	29.5	30.8	30.2	21.0	21.2	21.1	22.1	22.5	22.3
1976	29.0	30.4	29.7	21.2	21.1	21.1	22.2	22.4	22.3
1975	28.6	30.7	29.7	21.3	21.1	21.2	22.3	22.4	22.4
1974	28.3	29.7	29.0	21.0	21.0	21.0	21.9	22.0	22.0
1973	28.3	30.6	29.4	21.2	20.9	21.1	22.1	21.9	22.0
1972	28.2	29.9	28.9	20.9	20.7	20.8	21.7	21.4	21.5
1971	28.1	30.9	29.2	20.9	20.5	20.7	21.7	21.3	21.5
1970	28.8	33.0	30.6	20.7	20.4	20.5	21.7	21.4	21.6
1965	30.4	35.2	32.4	20.4	20.6	20.5	21.5	21.5	21.5
1960	29.2	39.7	32.7	20.9	20.8	20.9	21.7	21.7	21.7
FULL-TIME									
1979	27.1	28.5	27.8	20.5	20.2	20.3	20.7	20.5	20.6
1978	27.9	27.3	27.6	20.4	20.1	20.2	20.7	20.4	20.5
1977	27.2	26.8	27.0	20.4	20.1	20.2	20.7	20.4	20.5
1976	26.5	26.9	26.7	20.7	20.1	20.4	21.0	20.4	20.7
1975	26.3	28.1	27.1	20.8	20.0	20.4	21.1	20.4	20.8
PART-TIME									
1979	30.1	32.1	31.2	25.4	28.5	27.2	27.4	29.8	28.8
1978	31.1	31.6	31.4	25.3	27.8	26.8	28.1	29.5	28.9
1977	30.5	32.2	31.4	25.2	28.0	26.8	27.7	29.8	28.9
1976	30.2	31.6	31.0	25.3	28.4	27.0	27.7	29.9	29.0
1975	30.2	31.8	31.1	25.4	28.8	27.3	27.7	30.3	29.1

UNIVERSITY OF NORTHERN IOWA

Residence Hall Occupancy

Fall, 1979



Total Occupancy

Women	2967
Men	<u>1998</u>
Total	4965

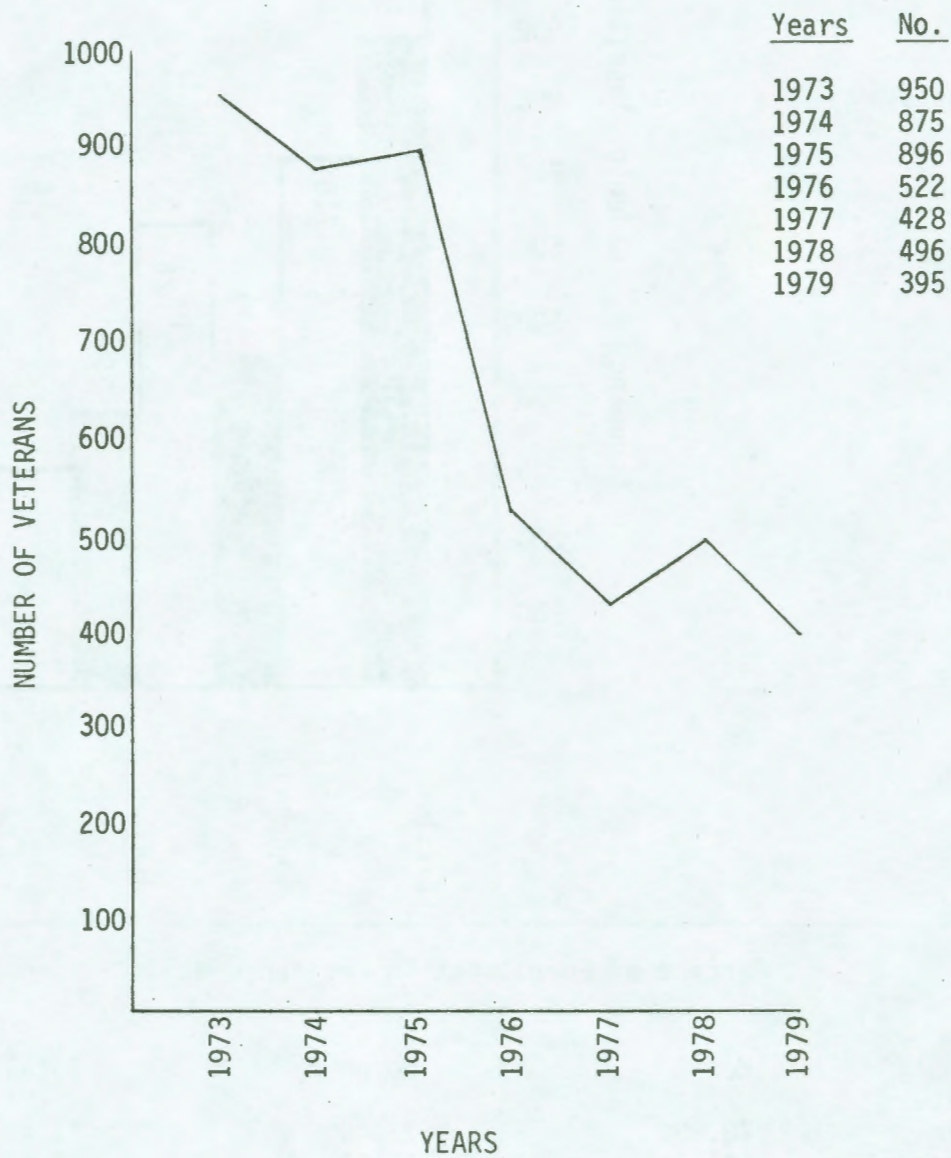
Women

Men

Percent of Enrollment in Residence Halls
Fall, 1979

	Men	Women	Total
Undergraduate			
Freshmen	70.20%	72.40%	71.48%
Sophomore	54.50	65.63	60.86
Sub Total	<u>64.02</u>	<u>69.81</u>	<u>67.37</u>
Junior	40.78	54.53	48.51
Senior	30.22	30.07	30.14
Unclassified	<u>11.20</u>	<u>8.84</u>	<u>9.74</u>
Total Undergraduates	<u>49.76</u>	<u>56.43</u>	<u>53.55</u>
Graduate	4.65	4.43	4.53
Total	<u>44.18</u>	<u>50.63</u>	<u>47.82</u>

VETERANS RECEIVING VA EDUCATIONAL BENEFITS
Fall Semesters 1973-1979

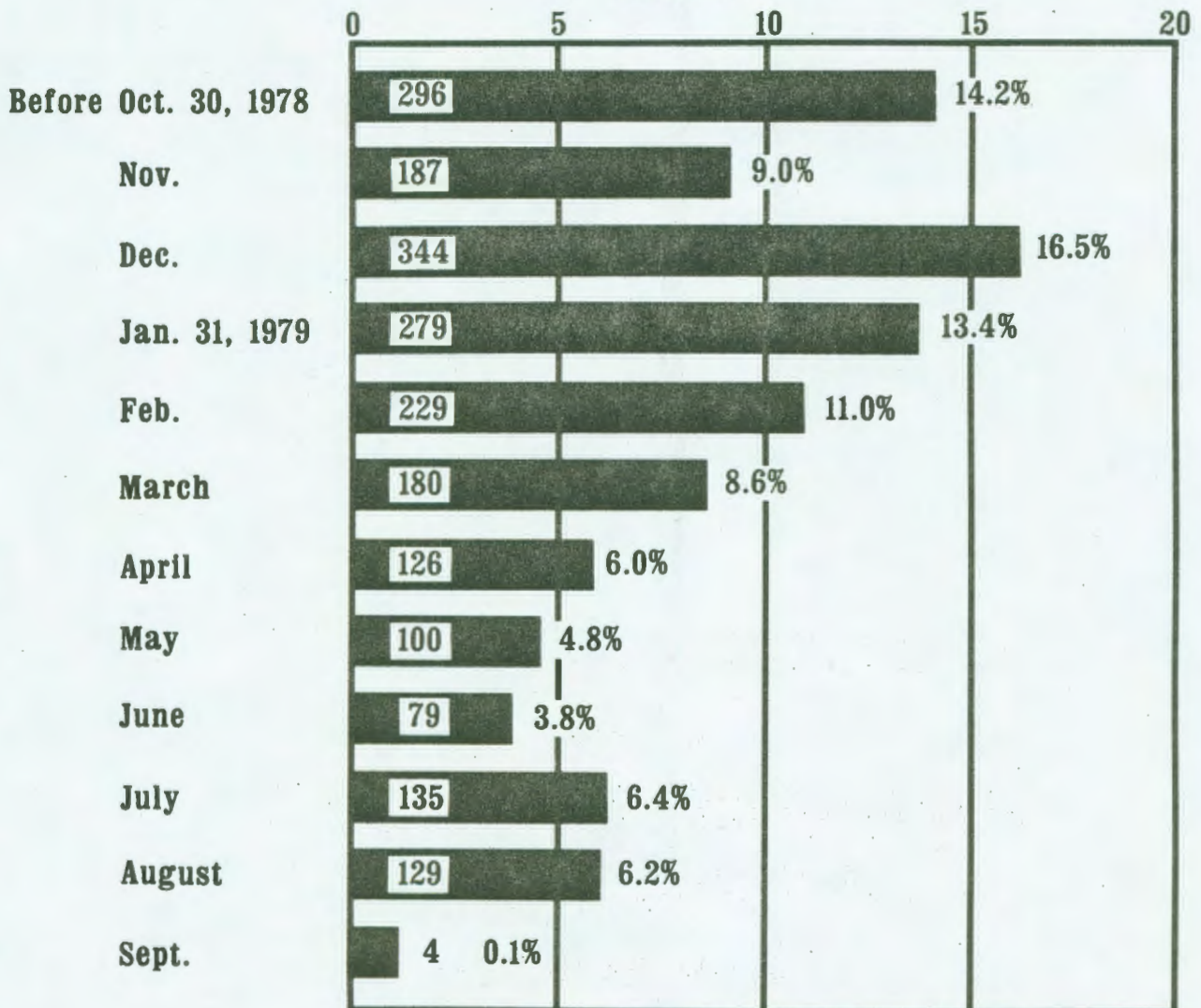


SECTION II. NEW STUDENTS ENTERING UNI FALL SEMESTER 1979

Part A. Freshmen Direct From High School

**DISTRIBUTION BY MONTH OF APPLICATION OF 2088 ENROLLED
STUDENTS NEW FROM HIGH SCHOOL**

PERCENT



FALL 1979

**DISTRIBUTION BY SIZE OF HIGH SCHOOL CLASS
FOR 2088 ENROLLED STUDENTS
NEW FROM HIGH SCHOOL**

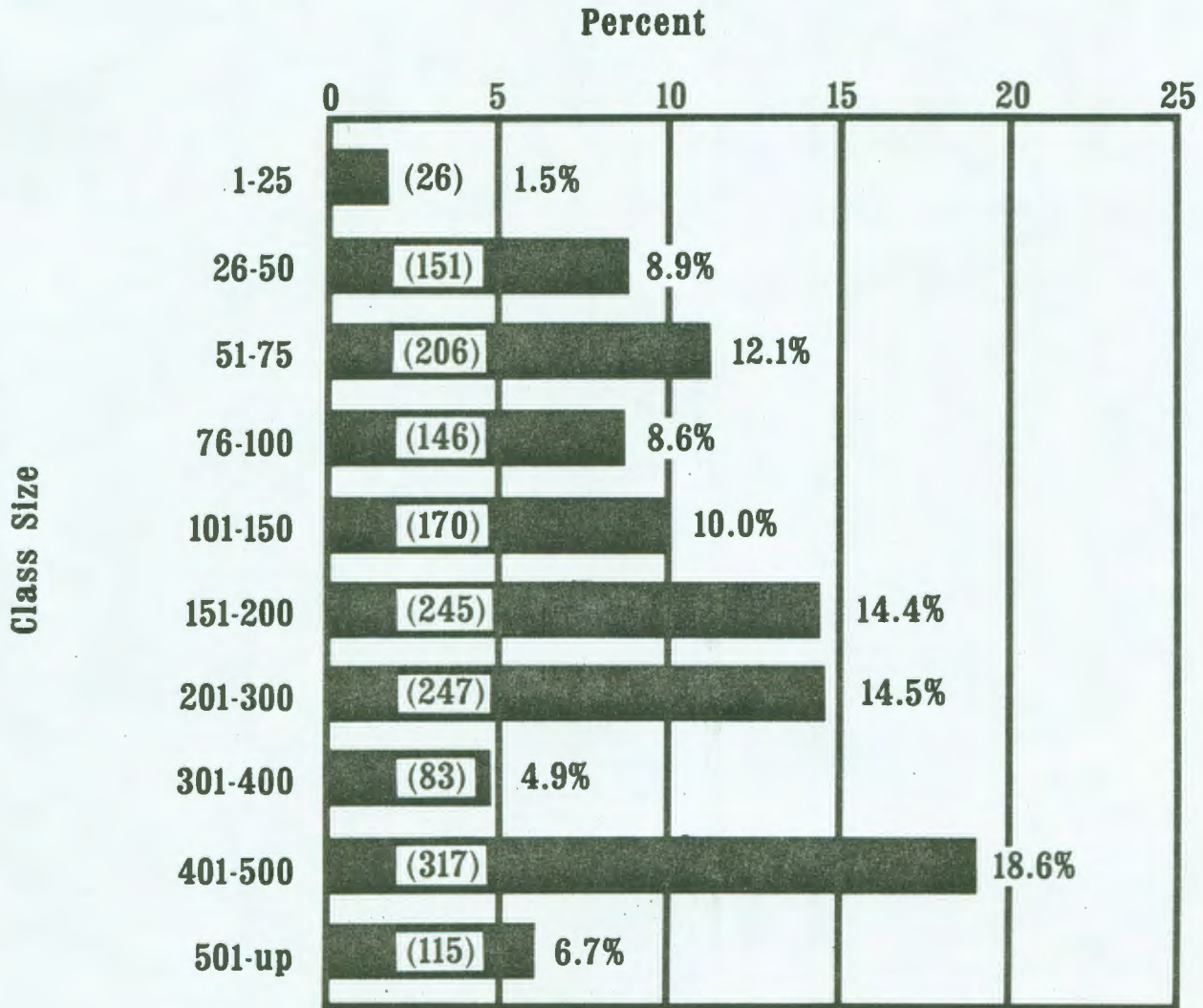
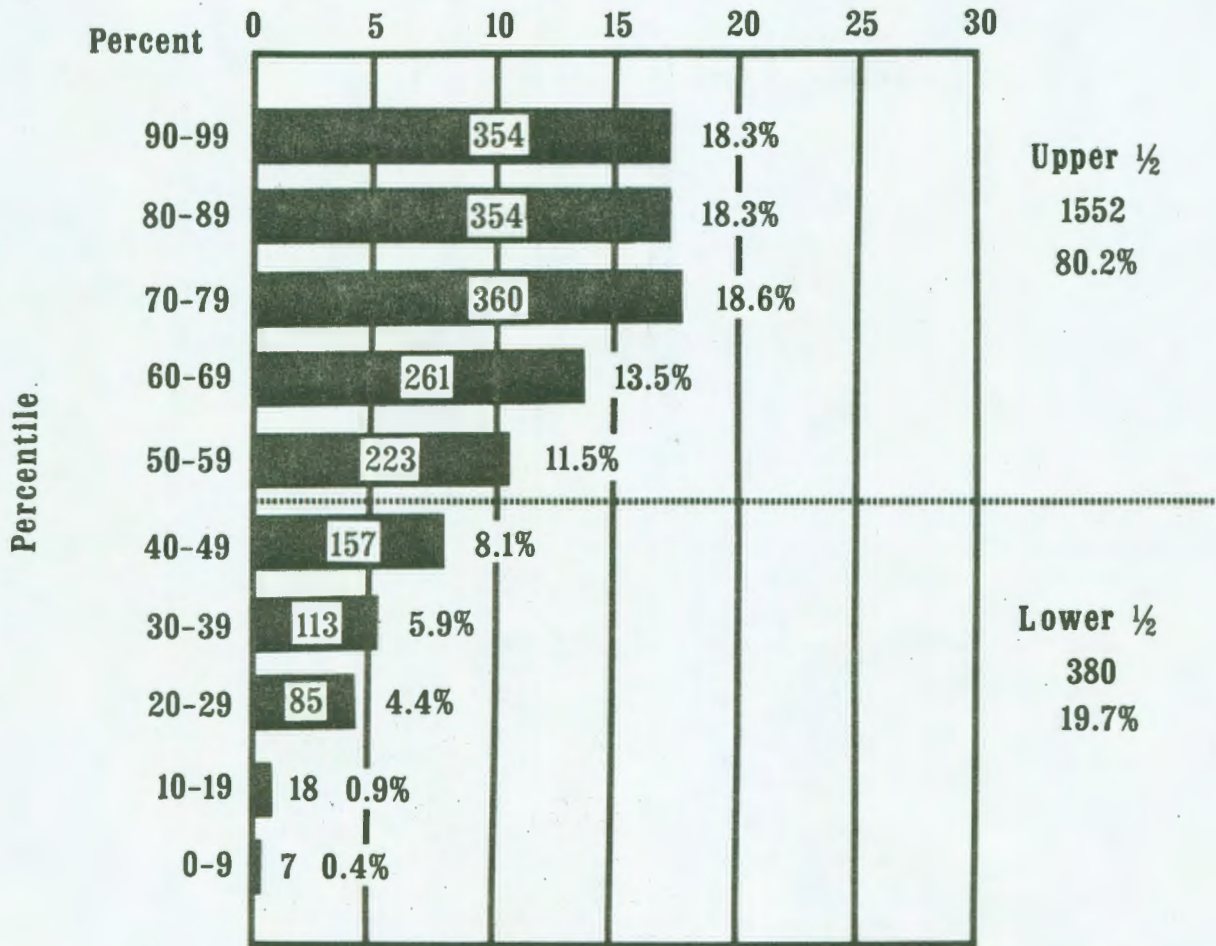


Table Based On 1706

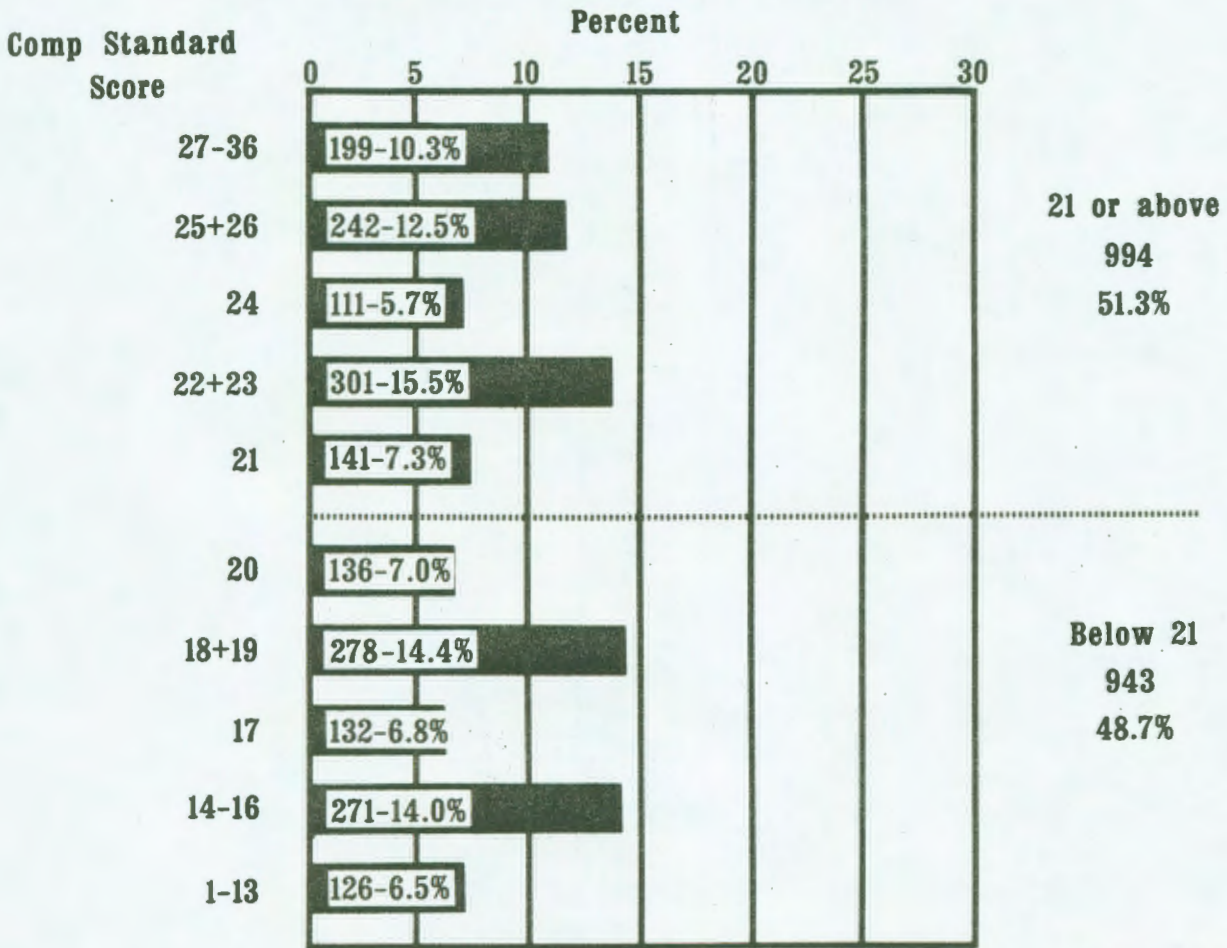
FALL 1979

**DISTRIBUTION BY PERCENTILE RANK IN HIGH SCHOOL
GRADUATING CLASS FOR 1932 ENROLLED STUDENTS NEW FROM HIGH SCHOOL**



FALL 1979

**DISTRIBUTION BY AMERICAN COLLEGE TEST SCORES FOR
1937 ENROLLED STUDENTS NEW FROM HIGH SCHOOL**



FALL 1979

**DISTRIBUTION BY AMERICAN COLLEGE TEST COMPOSITE SCORE
AND HIGH SCHOOL DECILE RANK IN CLASS
FOR 1899 ENROLLED STUDENTS NEW FROM HIGH SCHOOL
FOR WHOM BOTH ACT SCORE AND RANK IN CLASS ARE AVAILABLE**

		H.S. Decile Rank												
642 33.8%	9	0	7	4	22	17	17	58	27	79	123	455 24.0%	888 46.7%	
	8	3	25	17	48	24	34	70	28	67	35			
	7	14	33	22	60	27	28	69	25	53	18			
	6	17	54	29	40	19	21	38	11	18	10			
	5	27	58	25	38	12	19	20	8	7	5			
286 15.1%	4	16	44	13	25	16	6	18	5	9	2	83 4.4%		
	3	22	26	11	15	8	9	13	3	4	0			
	2	20	19	8	17	7	2	6	1	0	0			
	1	1	2	1	7	1	1	2	1	1	0			
	0	4	0	0	2	1	0	0	0	0	0			
		55 2.9%												
			1-13	14-16	17	18+19	20	21	22+23	24	25+26	27-36		

ACT Standard Composite Scores

FALL 1979

PROFILES OF NEW STUDENTS ENTERING UNIVERSITY OF NORTHERN IOWA DIRECT FROM HIGH SCHOOL
Fall Semesters 1966-1979

TABLE 1. HIGH SCHOOL RANK

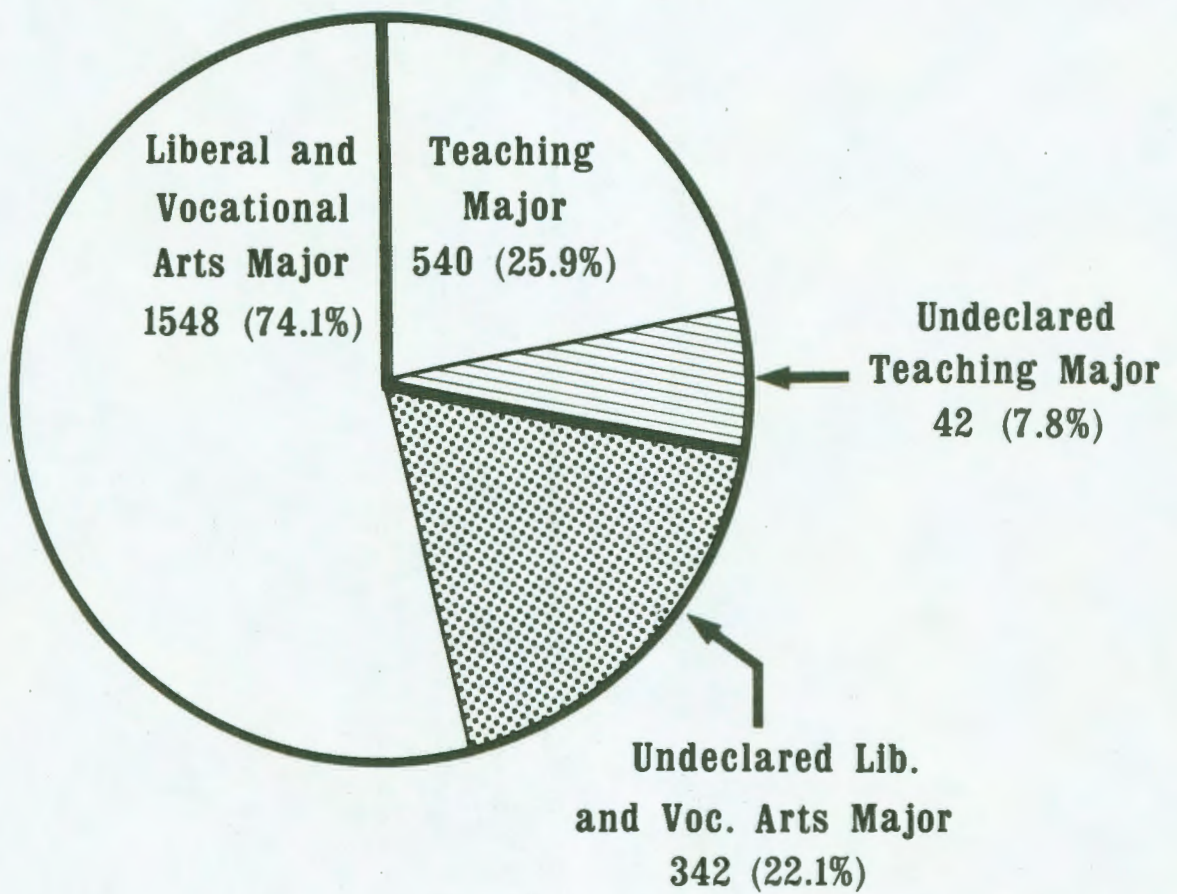
Percentile Rank	Percentage of Students in Various Percentile Intervals													
	1966	1967	1968	1969	1970	1971	1972	1973	1974	1975	1976	1977	1978	1979
90-99	20.7	22.0	21.5	20.2	21.8	21.0	20.7	16.7	19.2	19.5	19.0	15.7	17.3	18.3
80-89	22.5	21.4	23.8	21.9	21.0	21.7	18.8	18.4	18.2	17.5	18.1	18.4	16.6	18.3
70-79	20.7	19.5	19.5	20.5	19.3	19.2	17.2	17.8	15.0	15.8	15.0	16.9	16.8	18.6
60-69	15.6	15.9	16.6	16.2	15.3	14.9	14.8	13.5	14.1	13.5	15.8	14.5	13.7	13.5
50-59	14.3	14.2	13.2	13.6	12.7	11.5	13.9	10.3	11.5	11.0	11.1	12.0	12.0	11.5
UPPER HALF	93.8	93.0	94.6	92.4	90.1	88.3	85.4	76.7	78.0	77.3	79.0	77.6	76.4	80.2
40-49	4.7	5.3	3.9	5.3	6.3	7.3	7.7	9.1	8.7	9.0	8.7	9.1	10.9	8.1
30-39	1.0	1.2	1.0	1.5	2.1	3.1	4.2	6.0	6.3	5.8	5.6	7.4	7.0	5.9
20-29	0.3	0.4	0.3	0.4	0.9	1.1	1.5	5.1	3.9	4.8	4.4	4.8	4.1	4.4
10-19	0.1	0.1	0.1	0.2	0.4	0.1	0.6	2.3	2.4	2.2	1.5	1.0	1.3	0.9
0-9	0.0	0.0	0.1	0.2	0.2	0.0	0.6	0.7	0.7	0.8	0.8	0.1	0.3	0.4
LOWER HALF	6.1	7.0	5.4	7.6	9.9	11.7	14.6	23.3	22.0	22.7	21.0	22.5	23.6	19.7

TABLE 2. AMERICAN COLLEGE TEST

Composite Standard Score	Percentage of Students in Various Test Score Intervals													
	1966	1967	1968	1969	1970	1971	1972	1973	1974	1975	1976	1977	1978	1979
27-36	21.2	20.0	21.7	21.5	22.7	22.9	19.4	17.6	17.4	14.1	13.1	9.9	10.9	10.3
25&26	19.6	20.8	21.6	21.8	19.7	20.8	17.5	14.9	14.2	14.4	13.0	12.7	11.7	12.5
24	11.4	12.1	10.5	11.6	12.3	8.8	11.5	9.9	7.9	7.6	8.9	6.4	7.4	5.7
22&23	21.6	20.2	20.2	19.2	19.3	18.6	17.7	17.0	15.6	15.3	13.7	13.7	13.7	15.5
21	8.1	8.4	7.4	7.7	7.9	7.3	8.7	6.2	7.4	7.2	7.1	7.0	7.8	7.3
SCORE OF 21 OR ABOVE	81.9	81.5	81.4	81.8	81.9	78.4	74.8	65.6	62.4	58.4	55.8	49.7	51.5	51.3
20	7.4	5.5	6.5	5.1	5.4	7.0	5.8	7.0	6.0	6.5	6.5	7.8	6.8	7.0
18&19	6.6	7.5	7.9	8.3	7.9	9.3	10.7	11.4	12.3	13.0	13.7	13.9	14.5	14.4
17	1.7	2.7	1.8	1.7	2.4	2.3	3.5	4.8	3.8	5.7	5.8	6.3	6.0	6.8
14-16	2.0	2.1	2.2	2.6	1.9	2.4	4.4	7.8	10.5	11.1	12.1	13.8	14.1	14.0
1-13	0.3	0.7	0.2	0.5	0.5	0.6	0.7	3.4	4.9	5.2	6.1	8.5	7.1	6.5
SCORE OF 20 OR BELOW	18.0	18.5	18.6	18.2	18.1	21.6	25.1	34.4	37.6	41.6	44.2	50.3	48.5	48.7

Compiled by Office of Admissions
January 1980

**DISTRIBUTION BY CURRICULUM OF 2088
ENROLLED STUDENTS NEW FROM HIGH SCHOOL**



FALL 1979

PROSPECTIVE ACADEMIC MAJORS OF NEW STUDENTS DIRECT FROM HIGH SCHOOL

UNIVERSITY OF NORTHERN IOWA - FALL SEMESTER 1979

<u>College</u>	<u>Men</u>	<u>Women</u>	<u>Total</u>
<u>SOCIAL & BEHAVIORAL SCIENCE</u>			
Home Economics	2	52	54
Psychology	10	31	41
Social Work	5	50	55
Social Science	1	0	1
Economics	6	2	8
Political Science	6	4	10
History	7	10	17
Geography	2	0	2
Sociology	2	9	11
College Total	41	158	199

<u>EDUCATION</u>			
Elementary and Middle School	7	155	162
Special Education	8	99	107
Remedial Reading	0	7	7
Phys. Ed., Health & Rec.	31	42	73
College Total	46	303	349

<u>BUSINESS</u>			
Accounting	129	156	285
Marketing	25	17	42
Management	118	33	151
Office Administration	7	29	36
Business Education	31	29	60
College Total	310	264	574

Office of Student Research 10/4/1979

<u>College</u>	<u>Men</u>	<u>Women</u>	<u>Total</u>
<u>HUMANITIES & FINE ARTS</u>			
Speech	29	24	53
Speech Pathology	0	20	20
Music	26	24	50
Art	20	30	50
English	7	28	35
TEFL	0	5	5
Humanities	1	1	2
French	1	2	3
Spanish	3	8	11
College Total	87	142	229

<u>NATURAL SCIENCE</u>			
Industrial Arts	15	0	15
Industrial Tech.	43	5	48
Mathematics	17	21	38
Science	4	3	7
Biology	17	15	32
Chemistry	8	1	9
Earth Science	6	1	7
Physics	2	1	3
College Total	112	47	159

<u>MISCELLANEOUS</u>			
Undecided	164	220	384
Pre-Professional	42	59	101
Major not offered at UNI	12	53	65
Gen., & Liberal Studies	14	14	28
Total	232	346	578
<u>GRAND TOTAL</u>	<u>828</u>	<u>1260</u>	<u>2088</u>

FIRST SEMESTER CUMULATIVE GRADE POINT AVERAGES, AMERICAN COLLEGE TEST (ACT) COMPOSITE STANDARD SCORES, AND HIGH SCHOOL DECILE RANKS FOR 1,618 (1,008 WOMEN AND 610 MEN) NEW STUDENTS DIRECT FROM HIGH SCHOOL WHO COMPLETED THE FALL SEMESTER 1979 AT THE UNIVERSITY OF NORTHERN IOWA AND FOR WHOM ACT SCORES AND HIGH SCHOOL DECILE RANKS WERE AVAILABLE.

Prospective Major *	Women	Men	1st Semester Grade Point Average (Fall Semester 1979)				American College Test Composite Standard Score				High School Decile Rank 9 = Top 1/10			
			Women		Men		Women		Men		Women		Men	
			Mean	S.D.	Mean	S.D.	Mean	S.D.	Mean	S.D.	Mean	S.D.	Mean	S.D.
Business	214	238	2.40	.77	2.19	.74	20.4	4.3	20.1	4.4	7.17	1.1	5.45	2.1
Elem. Ed.	220	11	2.53	.72	2.31	.72	19.5	4.0	17.4	3.9	6.79	1.7	5.64	2.5
Mid. Sch.	5	0	2.63	.48	---	---	21.2	5.0	---	---	7.20	1.1	---	---
Phys. Ed.	28	24	2.40	.55	1.98	.88	17.8	3.8	18.6	2/9	6.00	2.0	5.08	2.0
Recreation	9	0	2.42	.49	---	---	18.9	4.2	---	---	6.33	2.0	---	---
Home Econ.	46	0	2.39	.66	---	---	19.1	4.3	---	---	6.46	2.0	---	---
Economics	0	6	---	---	2.55	.75	---	---	22.2	2.6	---	---	5.67	2.7
History	10	7	2.45	1.05	2.28	.79	20.8	5.3	21.9	3.6	6.20	2.0	5.71	2.4
Pol. Sci.	0	5	---	---	2.57	.58	---	---	24.0	1.6	---	---	4.60	2.3
Soc. Work	39	0	2.27	.89	---	---	18.8	4.7	---	---	6.36	2.1	---	---
Psych.	23	10	2.46	.98	1.86	.94	20.1	4.5	19.7	4.7	6.40	2.3	5.20	1.5
Ind. Arts	0	15	---	---	2.17	.73	---	---	19.0	4.5	---	---	5.80	2.0
Technology	0	30	---	---	2.26	.57	---	---	19.5	4.3	---	---	5.90	1.7
Math.	11	11	2.77	.69	2.53	.49	23.6	2.7	24.7	4.1	8.27	0.8	7.27	2.0
Biology	13	15	2.59	.92	1.85	1.01	23.5	3.5	20.3	3.9	7.54	1.3	5.93	2.2
Earth Sci.	0	4	---	---	2.46	.49	---	---	21.3	6.0	---	---	5.50	2.6
Art	28	14	2.51	.69	2.24	.62	18.9	3.8	18.0	4.7	6.07	1.9	4.71	2.5
English	27	5	2.56	.73	2.91	.59	19.7	4.2	21.4	4.4	6.77	1.7	6.20	1.6
Languages	4	0	2.90	.69	---	---	21.3	6.2	---	---	8.00	0.8	---	---
Speech	41	22	2.61	.70	2.20	.77	20.8	4.3	22.2	4.4	6.46	2.3	5.60	2.0
Music	19	18	2.66	.82	2.86	.81	20.6	4.2	22.1	4.2	7.58	1.5	6.44	1.8
Gen. & Lib. Studies	11	11	2.22	.73	2.23	.33	16.8	1.7	20.5	3.5	5.09	1.7	5.09	2.2
Pre. Prof.	92	47	2.33	.73	2.17	.76	20.0	4.3	20.5	4.3	6.91	2.0	5.60	2.0
Undecided	168	117	2.48	.74	2.13	.87	20.0	4.5	20.2	4.5	6.66	1.8	5.20	2.2
Total Students	1008	610	2.46	.75	2.19	.78	19.9	4.3	20.3	4.4	6.78	1.9	5.49	2.1

*Prospective majors which are not listed either did not have an adequate number of students (4 or more) for which a statistical analysis could be made or were grouped together with other prospective majors in one area. (Examples - Business, Speech, and Languages.)

CUMULATIVE GRADE POINT AVERAGES EARNED BY 630 UNI FRESHMEN MEN DIRECT FROM HIGH SCHOOL FALL SEMESTER 1979 UTILIZING HIGH SCHOOL RANK IN GRADUATING CLASS AND AMERICAN COLLEGE TEST (ACT) COMPOSITE STANDARD SCORES

Instructions: ACT Standard Composite Scores are listed at the sides of the chart and High School Decile Rank at the top of the chart. After locating the ACT Composite Standard Score, move across the chart to the column listing the High School Decile Rank. The cumulative grade average (C = 2.00) found at this point indicates the average grade point earned by freshmen men Fall Semester 1979-80. The following number indicates the number of men receiving a 2.00 average or above while the last number indicates the total number of men with this ACT score and high school rank. For example, new freshmen male students, Fall Semester 1979-80, with an ACT Score of 20 and a High School Decile Rank of 6 had an average cumulative grade index of 2.25 with 6 of the total of 9 men earning a grade index of 2.00 or above.

HIGH SCHOOL DECILE RANK (9 equals graduation in top 1/10 of High School Class)

	0			1			2			3			4			5			6			7			8			9			TOTALS	
	Avg. GPA	Above 2.00	Total	Avg. GPA	Above 2.00	Total	Avg. GPA	Above 2.00	Total	Avg. GPA	Above 2.00	Total	Avg. GPA	Above 2.00	Total	Avg. GPA	Above 2.00	Total	Avg. GPA	Above 2.00	Total	Avg. GPA	Above 2.00	Total	Avg. GPA	Above 2.00	Total	Above 2.00	Total			
31																																
30																																
29																																
28																																
27																																
26																																
25																																
24																																
23																																
22																																
21																																
20																																
19																																
18																																
17																																
16																																
15																																
14																																
13																																
12																																
11																																
10																																
9																																
8																																
7																																
TOTALS																																

PREDICTED FIRST SEMESTER GRADE POINT AVERAGE (MEN) = $\left[4.79 \text{ (ACT)} + 11.66 \text{ (H.S.D.R.)} + 58.10 \right] \div 100$

CUMULATIVE GRADE POINT AVERAGES EARNED BY 1022 UNI FRESHMEN WOMEN DIRECT FROM HIGH SCHOOL FALL SEMESTER 1979 UTILIZING HIGH SCHOOL RANK
IN GRADUATING CLASS AND AMERICAN COLLEGE TEST (ACT) COMPOSITE STANDARD SCORES

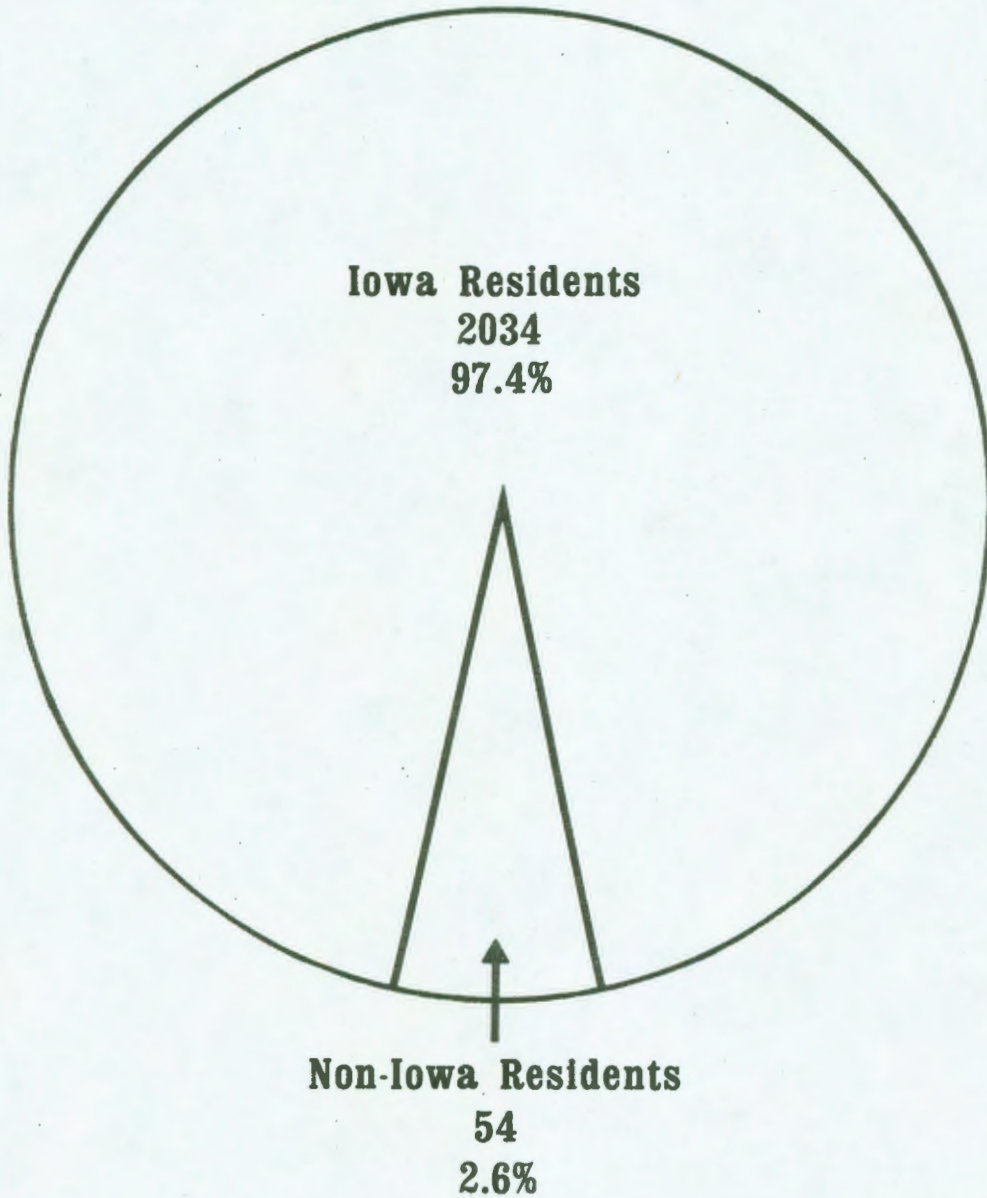
Instructions: ACT Standard Composite Scores are listed at the sides of the chart and High School Decile Rank at the top of the chart. After locating the ACT Composite Standard Score move across the chart to the column listing the High School Decile Rank. The cumulative grade average (C = 2.00) found at this point indicates the average grade point earned by freshmen women Fall Semester 1979-80. The following number indicates the number of women receiving a 2.00 average or above while the last number indicates the total number of women with this ACT score and high school rank. For example, new freshmen female students, Fall Semester 1979-80; with an ACT Score of 20 and a High School Decile Rank of 6 had an average cumulative grade index of 2.57 with 8 of the total of 9 women earning a grade index of 2.00 or above.

HIGH SCHOOL DECILE RANK (9 equals graduation in top 1/10 of High School Class)

	0			1			2			3			4			5			6			7			8			9			TOTALS																		
	Avg. GPA	Above 2.00	Total	Avg. GPA	Above 2.00	Total	Avg. GPA	Above 2.00	Total	Avg. GPA	Above 2.00	Total	Avg. GPA	Above 2.00	Total	Avg. GPA	Above 2.00	Total	Avg. GPA	Above 2.00	Total	Avg. GPA	Above 2.00	Total	Avg. GPA	Above 2.00	Total	Avg. GPA	Above 2.00	Total	Above 2.00	Total																	
31																																	1/1																
30																											3.24	2/ 2				3.70	5/ 5		7/7														
29																											2.74	2/ 2				3.70	5/ 5		7/7														
28																											3.02	3/ 3				3.57	9/ 9		12/12														
27																					2.30	2/ 3					2.43	2/ 3				3.30	20/20		30/32														
26																											2.63	5/ 6				3.26	13/13		40/42														
25													1.92	0/ 2													2.33	1/ 2				2.68	16/19		60/69														
24													1.65	0/ 1				2.67	2/ 2								2.52	2/ 2				2.61	10/12		45/54														
23														2.02	1/ 3													2.62	6/ 6				2.40	20/27		61/76													
22																																			82/88														
21																																			66/80														
20																																			62/75														
19	2.94	1/ 1																																	64/78														
18	2.54	1/ 1																																	44/76														
17																																			55/78														
16																																			38/70														
15																																			35/60														
14																																			22/52														
13																																			12/27														
12	1.00	0/ 1																																	7/18														
11																																			1/10														
10																																			0/6														
9																																			1/2														
8																																			0/1														
7																																			0/1														
TOTALS		2/ 3												8/25															0/ 1						13/37		23/66		46/112		91/137		172/212		201/221		196/208		752/1022

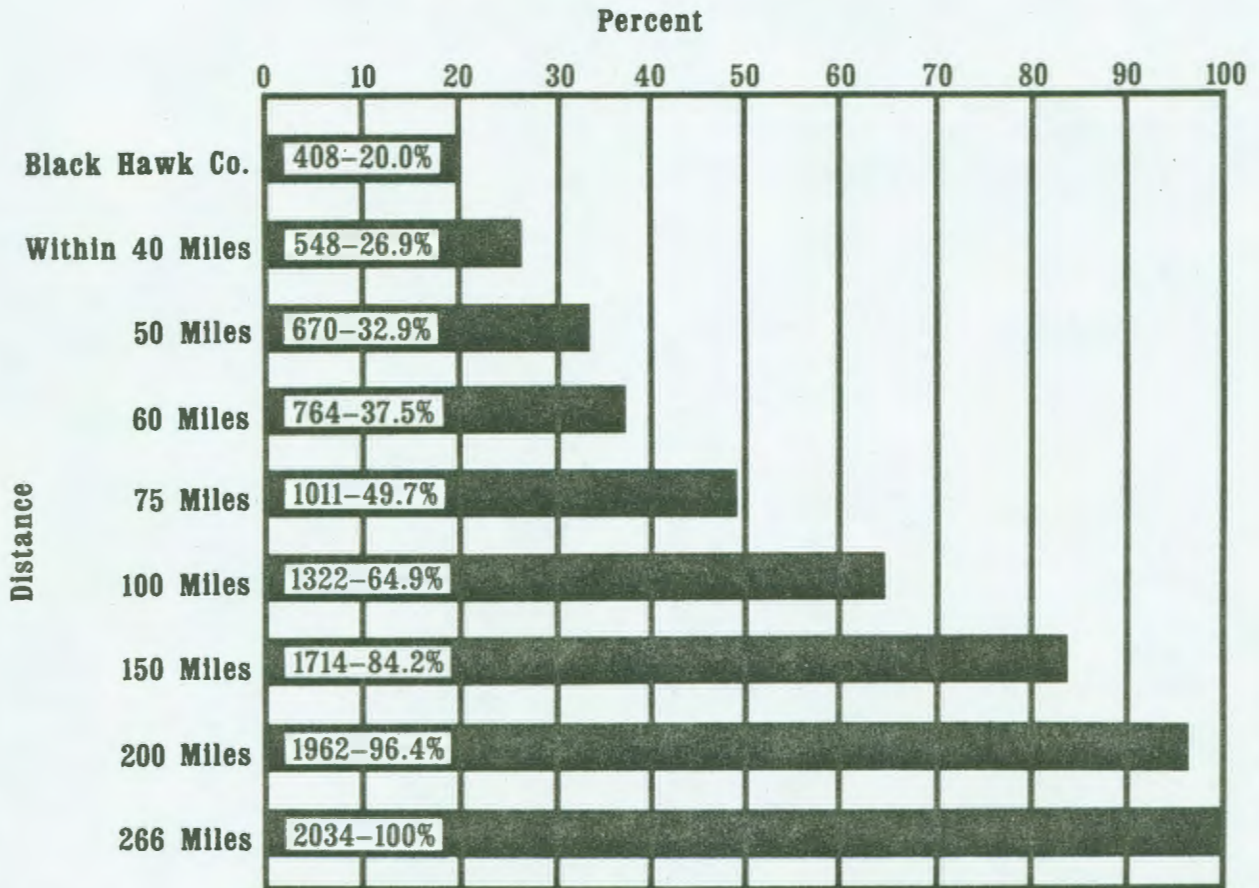
PREDICTED FIRST SEMESTER GRADE POINT AVERAGE (WOMEN) = $\left[5.33 \text{ (ACT)} + 15.41 \text{ (H.S.D.R.)} + 35.12 \right] \div 100$

**DISTRIBUTION BY PLACE OF RESIDENCE FOR FEE PURPOSES OF
2088 ENROLLED STUDENTS NEW FROM HIGH SCHOOL**



FALL 1979

**DISTRIBUTION OF DISTANCE FROM CEDAR FALLS
FOR 2034 ENROLLED STUDENTS
NEW FROM IOWA HIGH SCHOOLS**



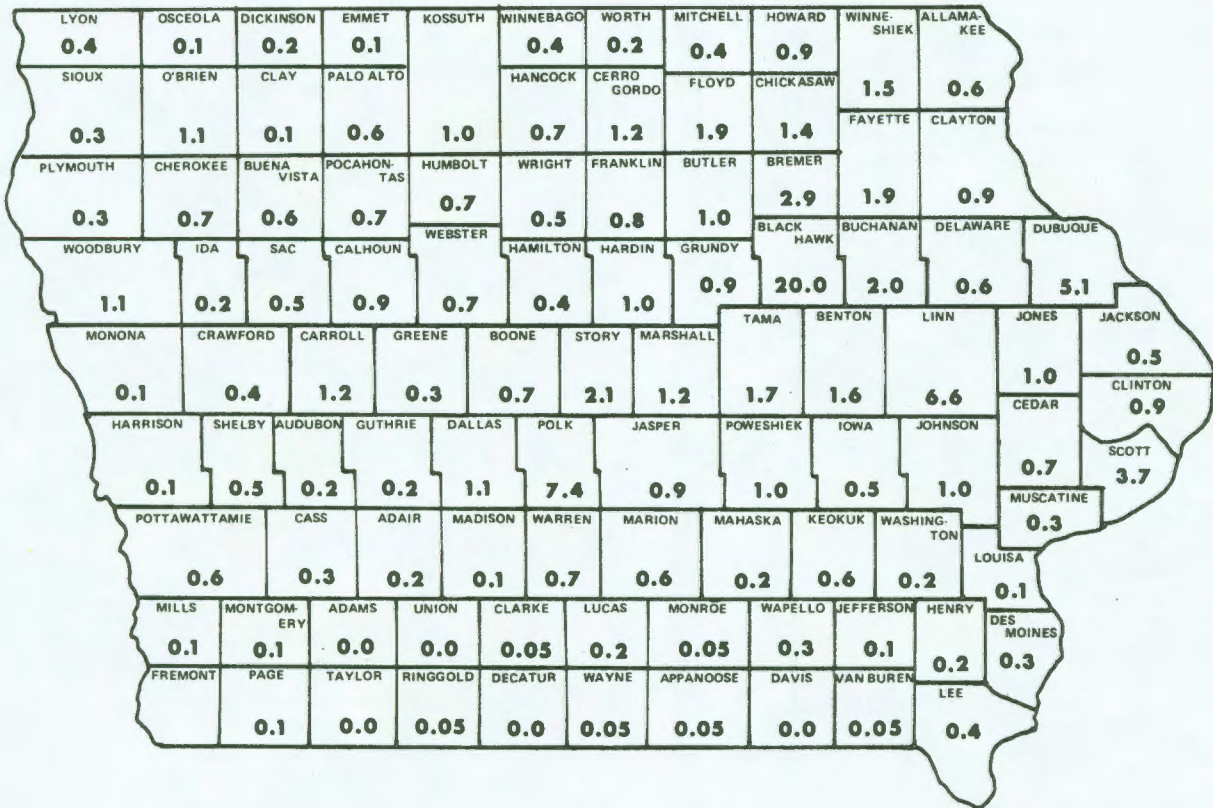
FALL 1979

NUMBER OF NEW STUDENTS ENTERING DIRECTLY FROM IOWA HIGH SCHOOLS

LYON	OSCEOLA	DICKINSON	EMMET	KOSSUTH	WINNEBAGO	WORTH	MITCHELL	HOWARD	WINNE-SHIEK	ALLAMA-KEE	
9	3	5	3		8	4	8	18			
SIoux	O'BRIEN	CLAY	PALO ALTO		HANCOCK	CERRO GORDO	FLOYD	CHICKASAW	30	12	
7	22	3	13	20	14	25	38	29	FAYETTE	CLAYTON	
PLYMOUTH	CHEROKEE	BUENA VISTA	POCAHONTAS	HUMBOLT	WRIGHT	FRANKLIN	BUTLER	BREMER			
7	14	12	14	14	11	16	20	60	38	19	
WOODBURY	IDA	SAC	CALHOUN	WEBSTER	HAMILTON	HARDIN	GRUNDY	BLACK HAWK	BUCHANAN	DELAWARE	DUBUQUE
23	4	11	19	14	9	20	19	408	42	13	103
MONONA	CRAWFORD	CARROLL	GREENE	BOONE	STORY	MARSHALL	TAMA	BENTON	LINN	JONES	JACKSON
2	8	24	6	14	42	25	35	32	134	20	10
HARRISON	SHELBY	AUDUBON	GUTHRIE	DALLAS	POLK	JASPER	POWESHIEK	IOWA	JOHNSON	CEDAR	CLINTON
2	10	4	4	23	150	19	21	11	21	15	19
POTTAWATTAMIE	CASS	ADAIR	MADISON	WARREN	MARION	MAHASKA	KEDOKUK	WASHINGTON	MUSCATINE	SCOTT	75
12	7	4	3	14	12	4	13	4	6		
MILLS	MONTGOMERY	ADAMS	UNION	CLARKE	LUCAS	MONROE	WAPELLO	JEFFERSON	HENRY	LOUISA	JACKSON
2	2	0	0	1	5	1	7	3	5	2	10
FREMONT	PAGE	TAYLOR	RINGGOLD	DECATUR	WAYNE	APPANOOSE	DAVIS	VAN BUREN	LEE	DES MOINES	CLINTON
1	2	0	1	0	1	1	0	1	8	6	19

FALL 1979

PERCENT OF TOTAL NEW STUDENTS ENTERING DIRECTLY FROM IOWA HIGH SCHOOLS



FALL 1979

OCCUPATIONS OF PARENTS OF UNIVERSITY OF NORTHERN IOWA STUDENTS
 NEW FROM HIGH SCHOOL - FALL SEMESTER 1979

<u>OCCUPATIONAL DESCRIPTIONS</u>	<u>FATHERS</u>		<u>MOTHERS</u>	
	<u>No.</u>	<u>%</u>	<u>No.</u>	<u>%</u>
<u>PROFESSIONAL, TECHNICAL, & MANAGERIAL</u>				
Scientist, architect, engineer, psychologist, physi- cian, nurse, teacher, attorney, clergy, accountant, public administration and government officials, social work, etc.	674	36.2	382	20.5
<u>CLERICAL AND SALES</u>	168	9.0	446	24.0
Secretary, bookkeeper, keypuncher, mail carrier, telephone operator, auctioneer, realtor, etc.				
<u>SERVICE OCCUPATIONS</u>	71	3.8	149	8.0
Waiter/ waitress, bartender, cook, baker, house- keeper, barber/cosmetologist, protective services (fire, police, military).				
<u>AGRICULTURAL, FISHERY, FORESTRY, AND RELATED OCCU- PATIONS</u>	310	16.6	14	0.8
Farming, etc.				
<u>PROCESSING OCCUPATIONS</u>	69	3.7	18	1.0
Processing of metal (foundry occupations); food (meat cutter, cannery worker); paper, petroleum, coal, chemicals, wood, stone & clay, leather & tex- tile occupations.				
<u>MACHINE TRADES</u>	172	9.2	22	1.2
Mechanic, machine operator, machinery repair and maintenance. Ex.: Tool and die makers, drill press operator, punch press.				
<u>BENCH WORK OCCUPATIONS</u>	14	0.8	7	0.4
Assembler, pattern maker, jeweler, upholsterer, musical instrument repair, etc.				
<u>STRUCTURAL WORK</u>	104	5.6	2	0.1
Carpenters, brick layers, electricians, plumbers, welders, house painters.				
<u>MISCELLANEOUS</u>	111	6.0	28	1.5
Bus driver, train engineer, taxi driver, distribution of utilities, recreation, sanitation, graphic art work, mining, etc.				
<u>HOMEMAKER</u>	6	0.3	732	39.3
<u>UNEMPLOYED</u>	12	0.6	5	0.3
<u>RETIRED</u>	44	2.4	5	0.3
<u>DECEASED</u>	59	3.2	20	1.1
<u>UNKNOWN OR NO RESPONSE</u>	48	2.6	32	1.7
TOTAL	1862	100.0	1862	100.0

PART B.

TRANSFERS FROM OTHER COLLEGES AND UNIVERSITIES

NEW TRANSFER STUDENTS ENTERING FALL 1979

* * * * *

787 Total two- and four-year college transfers

388	49.3%	Iowa two-year colleges
237	30.1%	Iowa four-year colleges
158	20.1%	Out-of-state two- and four-year colleges

* * * * *

787 Total two- and four-year college transfers

362	46.0%	Iowa public two-year colleges
26	3.3%	Iowa private two-year colleges
67	8.5%	Iowa public four-year colleges (Iowa State University and The University of Iowa)
170	21.6%	Iowa private four-year colleges
158	20.1%	Out-of-state two- and four-year colleges (public and private)
278	35.3%	North Iowa Area Community College, Ellsworth Community College, Marshalltown Community College, Iowa Central Community College-Ft. Dodge, Des Moines Area Community College-Ankeny
		and
		Iowa State University and The University of Iowa

* * * * *

388 Total Iowa two-year college transfers (public and private)

211	54.4%	North Iowa Area Community College, Ellsworth Community College, Marshalltown Community College, Iowa Central Community College-Ft. Dodge, Des Moines Area Community College-Ankeny
-----	-------	--

* * * * *

237 Total Iowa four-year colleges (public and private)

67	28.3%	Iowa State University and The University of Iowa
----	-------	--

NOTE: These statistics do not include 4 transfers from Nurses' Training Schools (.5%)

Instructions: ACT Standard Composite Scores are listed at the sides of the chart and High School Decile Rank at the top of the chart. After locating the ACT Composite Standard Score move across the chart to the column listing the High School Decile Rank. The cumulative grade average (C = 2.00) found at this point indicates the average grade point earned by transfer men Fall Semester 1979. The following number indicates the number of men receiving a 2.00 average or above while the last number indicates the total number of men with this ACT score and high school rank. For example, new transfer male students, Fall Semester 1979-80, with an ACT Score of 19 and a High School Decile Rank of 7 had an average cumulative grade index of 2.38 with 2 of the total of 3 men earning a grade index of 2.00 or above.

HIGH SCHOOL DECILE RANK (9 equals graduation in top 1/10 of High School Class)

	0			1			2			3			4			5			6			7			8			9			TOTALS					
	Avg. GPA	Above 2.00	Total	Avg. GPA	Above 2.00	Total	Avg. GPA	Above 2.00	Total	Avg. GPA	Above 2.00	Total	Avg. GPA	Above 2.00	Total	Avg. GPA	Above 2.00	Total	Avg. GPA	Above 2.00	Total	Avg. GPA	Above 2.00	Total	Avg. GPA	Above 2.00	Total	Above 2.00	Total							
33																																				
32																																				
31																																				
30							3.55	1/ 1				1.06	1/ 2																							
29														3.35	1/ 1							2.38	1/ 2		3.77	2/ 2		3.19	4/ 4		8/9					
28																						2.77	3/ 3		3.42	5/ 5		3.11	12/13		20/21					
27														1.33	0/ 1				2.23	1/ 1		3.03	2/ 2		2.87	4/ 6		3.52	2/ 2		9/12					
26														2.87	2/ 3				2.84	4/ 4		3.03	7/ 7		2.88	3/ 3		3.04	6/ 7		23/26					
25														1.56	0/ 2				2.76	3/ 3		3.03	4/ 4		2.58	5/ 6					12/15					
24													1.35	1/ 2				2.23	1/ 2		2.47	2/ 3		2.46	4/ 5		3.43	5/ 5		2.91	2/ 2		15/19			
23												2.42	1/ 2		2.40	4/ 4					1.89	2/ 5		2.48	3/ 4		2.67	2/ 2		3.43	3/ 3		15/20			
22														2.06	2/ 4				.80	0/ 1		2.46	1/ 1		1.45	0/ 2		2.94	4/ 4		3.57	1/ 1		8/13		
21							2.74	2/ 2			1.58	0/ 1		2.07	1/ 1				2.19	2/ 2		2.21	2/ 3		2.20	1/ 2		2.29	2/ 3		3.93	1/ 1		11/15		
20							1.73	1/ 2			2.74	2/ 2		1.70	0/ 2				3.60	2/ 2		2.90	2/ 2		2.00	0/ 1							7/11			
19							.70	0/ 1			2.47	3/ 4		1.92	0/ 1				2.61	5/ 5		1.79	0/ 1		2.38	2/ 3							11/16			
18							1.71	0/ 1			2.13	1/ 2							1.82	1/ 3		3.00	1/ 1		2.00	0/ 1							3/8			
17							2.67	1/ 1			2.24	2/ 3							2.29	2/ 4		3.08	2/ 2		2.97	2/ 2							11/14			
16	3.14	1/ 1					2.63	2/ 2			2.32	2/ 2		2.54	2/ 2				2.53	2/ 2		3.18	1/ 1		2.03	1/ 2							11/12			
15							2.55	2/ 2			2.03	2/ 3		2.48	2/ 2				1.62	0/ 2					2.88	1/ 1		2.00	0/ 1				8/12			
14							2.00	2/ 4			.92	0/ 1		2.36	1/ 1				1.94						2.75	1/ 1							4/8			
13							2.08	1/ 2			2.93	1/ 1		2.12	1/ 1																			3/4		
12							3.20	1/ 1																											1/1	
11														1.58	0/ 1				1.96	0/ 2														0/3		
10																																			0/0	
9							1.54	0/ 1																											0/1	
TOTALS		1/ 1					6/ 8				11/17																									190/250

PREDICTED FIRST SEMESTER GRADE POINT AVERAGE (TRANSFER MEN) = $\left[2.01 \text{ (ACT)} + 11.75 \text{ (H.S.D.R.)} + 141.83 \right] \div 100$

FIRST SEMESTER CUMULATIVE GRADE POINT AVERAGES EARNED BY 370 UNI WOMEN TRANSFERS FROM OTHER COLLEGES FALL SEMESTER 1979 UTILIZING HIGH SCHOOL DECILE RANK IN GRADUATING CLASS AND AMERICAN COLLEGE TEST (ACT) COMPOSITE STANDARD SCORES

Instructions: ACT Standard Composite Scores are listed at the sides of the chart and High School Decile Rank at the top of the chart. After locating the ACT Composite Standard Score move across the chart to the column listing the High School Decile Rank. The cumulative grade average (C = 2.00) found at this point indicates the average grade point earned by transfer women Fall Semester 1979. The following number indicates the number of women receiving a 2.00 average or above while the last number indicates the total number of women with this ACT score and high school rank. For example, new transfer female students, Fall Semester 1979-80, with an ACT Score of 18 and a High School Decile Rank of 7 had an average cumulative grade index of 2.64 with 2 of the total of 4 women earning a grade index of 2.00 or above.

HIGH SCHOOL DECILE RANK (9 equals graduation in top 1/10 of High School Class)

	0			1			2			3			4			5			6			7			8			9			TOTALS		
	Avg. GPA	Above 2.00	Total	Avg. GPA	Above 2.00	Total	Avg. GPA	Above 2.00	Total	Avg. GPA	Above 2.00	Total	Avg. GPA	Above 2.00	Total	Avg. GPA	Above 2.00	Total	Avg. GPA	Above 2.00	Total	Avg. GPA	Above 2.00	Total	Avg. GPA	Above 2.00	Total	Above 2.00	Total				
32																														1/1			
31																															3/4		
30																															6/6		
29																															11/11		
28																															25/25		
27																															20/20		
26																															23/23		
25																															22/26		
24																															31/33		
23																															22/23		
22																															16/17		
21																															18/24		
20																															14/17		
19																															19/22		
18																															13/19		
17																															13/17		
16																															11/14		
15																															15/22		
14																															6/11		
13																															5/10		
12																															4/8		
11																															6/8		
10																															3/4		
9																															1/3		
8																															0/2		
TOTALS																																309/370	

PREDICTED FIRST SEMESTER GRADE POINT AVERAGE (TRANSFER WOMEN) = $\left[5.54 \text{ (ACT)} + 8.77 \text{ (H.S.D.R.)} + 100.10 \right] \div 100$

PART C. NEW GRADUATE STUDENTS

NEW GRADUATE STUDENTS FALL 1979
BY MAJOR AREA

MAJOR	CODE	MEN	WOM	TOT
<u>Non-degree status</u>	<u>090</u>	<u>75</u>	<u>88</u>	<u>163</u>
School Business Management	155			
Master of Business Admin.	157	48	8	56
Elementary Education	211	1	1	2
Ed. of Gifted	215			
Remedial Reading	231		2	2
Dev. Secondary Reading	234		1	1
Special Education	240	3	15	18
Superintendent	261			
Elementary Principal	262	2	1	3
Secondary Principal	263			
Elementary Supervision	264	1		1
Communications Media	270			
Counseling	280	3	6	9
Elem. Guid. & Counseling	281	1	1	2
Sec. Guid. & Counseling	282	1	2	3
Coll. Stu. Pers. Ser.	283	4	2	6
Dir. of Guidance Serv.	284			
School Psychology	293	1	2	3
Home Economics	310		3	3
Industrial Arts	330	6		6
Technology	337	6	3	9
Doctor of Industrial Tech.	338	2		2
Library Science	350		2	2
Physical Education	370	5	3	8
Speech	500		2	2
Speech Pathology	510	3	10	13
Audiology	515		1	1
Music Education	521	2	1	3
Performance	524	2		2
Art	600		1	1
English	620	3	2	5
Community College	623	1		1
TEFL	629		2	2
Linguistics	630			
TEFL/French	692			
TEFL/German	694	1	1	2
TEFL/Spanish	698	2	1	3
French	720		1	1
Spanish	780	1	2	3
Mathematics	800	1		1
Math - Elem. Educ.	805			
Science - General	820	1		1
Biology	840	4	1	5
Chemistry	860	1	1	2
Political Science	940		1	1
History	960	1		1
Geography	970			
Sociology	980	2	1	3
TOTALS		184	168	352

NEW GRADUATE STUDENTS FALL 1979
BY BACHELORS DEGREE COLLEGE

College	Cose	TOTAL		
		MEN	WOM	TOT
Iowa State University	342	17	3	20
University of Northern Ia.	382	64	68	132
University of Iowa	386	10	7	17
Briar Cliff College	404		2	2
Buena Vista College	405		1	1
Central College	409	1	1	2
Clarke College	412			
Coe College	415		1	1
Cornell College	416	1		1
Drake University	423	1	2	3
Graceland College	435		1	1
Iowa Wesleyan College	445	2		2
Loras College	449	1	2	3
Luther College	451	2	4	6
Marycrest College	455			
Morningside College	461			
Mount Mercy College	463		1	1
Northwestern College	468			
St. Ambrose College	476			
Simpson College	478	2		2
University of Dubuque	484	1	1	2
Upper Iowa University	488		3	3
Vennard	489			
Wartburg College	493	1	3	4
Westmar College	496	1		1
William Penn College	498		1	1
Alabama	501	3		3
Arizona	502	1		1
Arkansas	503			
California	504	2	2	4
Colorado	505		1	1
Connecticut	506			
Florida	508	1		1
Georgia	509		2	2
Idaho	510	2		2
Illinois	511	11	10	21
Indiana	512	3		3
Kansas	514		3	3
Kentucky	515	1		1
Louisiana	516			
Massachusetts	519		1	1
Michigan	520	5		5
Minnesota	521	5	8	13
Mississippi	522		3	3
Missouri	523	4	3	7
Montana	524	1		1
Nebraska	525	7	3	10
New Jersey	528	1		1
New York	530	2	3	5
North Carolina	531	2		2
North Dakota	532	3	1	4
Ohio	533	2	1	3
Oklahoma	534	2	2	4
Oregon	535		1	1
Pennsylvania	536		1	1
South Carolina	538		2	2
South Dakota	539	2	2	4
Tennessee	540	2	1	3
Texas	541	4		4
Utah	542	1		1
Vermont	543	1	1	2
Virginia	544		3	3
West Virginia	546		2	2
Wisconsin	547	6	2	8
Wyoming	548		1	1
Foreign University or Coll	580	6	8	14
TOTALS		184	168	352

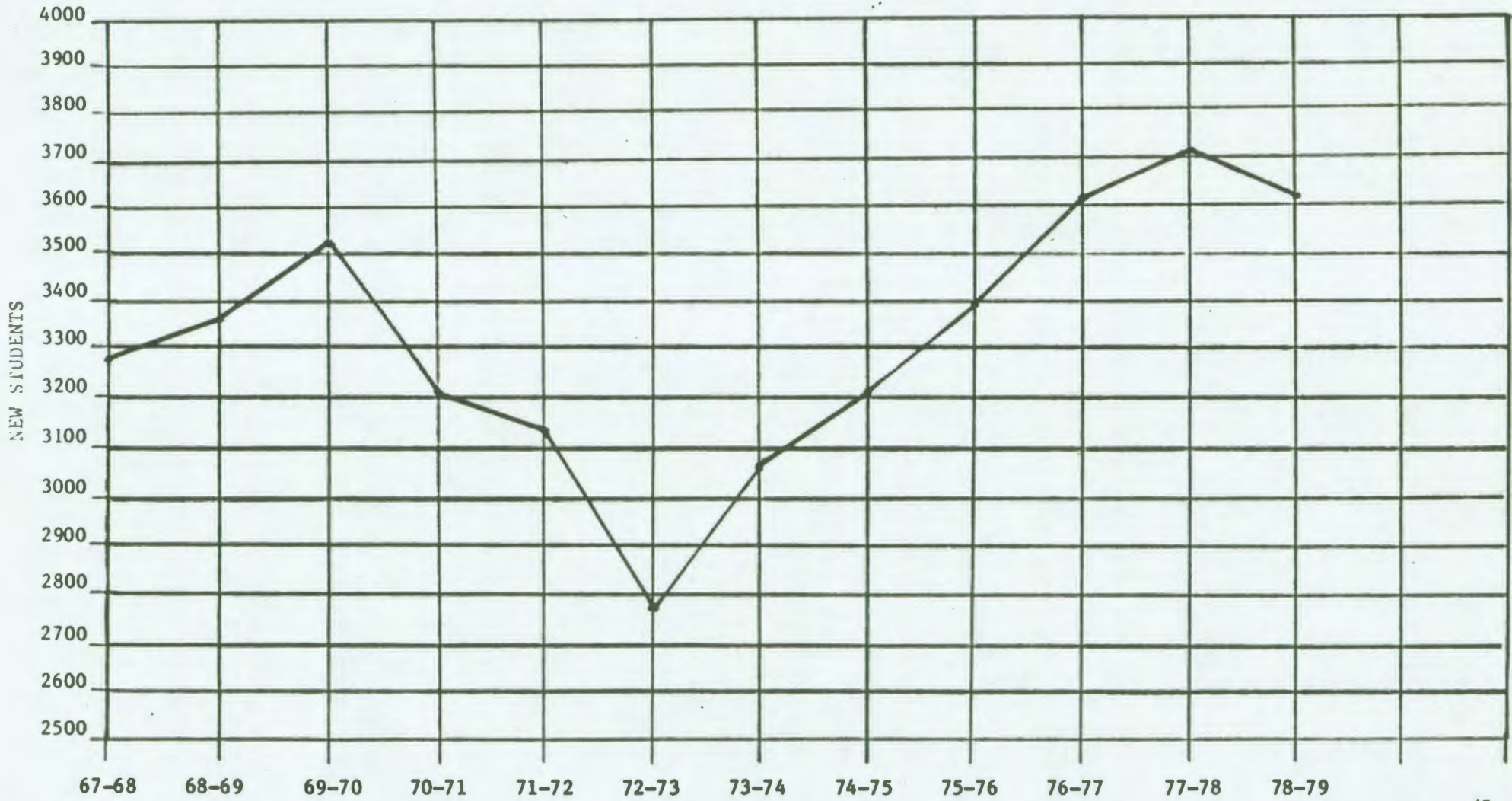
SECTION III. MISCELLANEOUS

NEW UNDERGRADUATE STUDENTS BY TERM AND YEAR

<u>Year</u> 1965-1966	<u>Year</u> 1966-1967	<u>Year</u> 1967-1968	<u>Year</u> 1968-1969	<u>Year</u> 1969-1970	<u>Year</u> 1970-1971	<u>Year</u> 1971-1972	<u>Year</u> 1972-1973	<u>Year</u> 1973-1974
<u>Summer 1965</u> H S 249 Tran 178	<u>Summer 1966</u> H S 184 Tran 165	<u>Summer 1967</u> H S 165 Tran 173	<u>Summer 1968</u> H S 142 Tran 194	<u>Summer 1969</u> H S 156 Tran 217	<u>Summer 1970</u> H S 153 Tran 163	<u>Summer 1971</u> H S 131 Tran 171	<u>Summer 1972</u> H S 93 Tran 133	<u>Summer 1973</u> H S 68 Tran 130
<u>Fall 1965</u> H S 1733 Tran 347	<u>Fall 1966</u> H S 1885 Tran 559	<u>Fall 1967</u> H S 1963 Tran 719	<u>Fall 1968</u> H S 2074 Tran 724	<u>Fall 1969</u> H S 2081 Tran 805	<u>Fall 1970</u> H S 1918 Tran 673	<u>Fall 1971</u> H S 1638 Tran 844	<u>Fall 1972</u> H S 1471 Tran 782	<u>Fall 1973</u> H S 1662 Tran 780
<u>Spring 1966</u> H S 88 Tran 156	<u>Spring 1967</u> H S 65 Tran 138	<u>Spring 1968</u> H S 73 Tran 186	<u>Spring 1969</u> H S 67 Tran 161	<u>Spring 1970</u> H S 105 Tran 160	<u>Spring 1971</u> H S 97 Tran 206	<u>Spring 1972</u> H S 117 Tran 233	<u>Spring 1973</u> H S 104 Tran 206	<u>Spring 1974</u> H S 177 Tran 252
<u>Year Total</u> H S 2070 = 75% Tran 681 = 25%	<u>Year Total</u> H S 2134 = 71% Tran 862 = 29%	<u>Year Total</u> H S 2201 = 67% Tran 1078 = 33%	<u>Year Total</u> H S 2283 = 68% Tran 1079 = 32%	<u>Year Total</u> H S 2342 = 66% Tran 1182 = 34%	<u>Year Total</u> H S 2168 = 68% Tran 1042 = 32%	<u>Year Total</u> H S 1866 = 60% Tran 1248 = 40%	<u>Year Total</u> H S 1668 = 60% Tran 1121 = 40%	<u>Year Total</u> H S 1907 = 62% Tran 1162 = 38%
TOTAL 2751	TOTAL 2996	TOTAL 3279	TOTAL 3362	TOTAL 3524	TOTAL 3210	TOTAL 3134	TOTAL 2789	TOTAL 3069
<u>Year</u> 1974-1975	<u>Year</u> 1975-1976	<u>Year</u> 1976-1977	<u>Year</u> 1977-1978	<u>Year</u> 1978-1979				
<u>Summer 1974</u> H S 61 Tran 118	<u>Summer 1975</u> H S 75 Tran 142	<u>Summer 1976</u> H S 79 Tran 161	<u>Summer 1977</u> H S 67 Tran 151	<u>Summer 1978</u> H S 57 Tran 147				
<u>Fall 1974</u> H S 1747 Tran 785	<u>Fall 1975</u> H S 1866 Tran 829	<u>Fall 1976</u> H S 1929 Tran 944	<u>Fall 1977</u> H S 2156 Tran 913	<u>Fall 1978</u> H S 1943 Tran 984				
<u>Spring 1975</u> H S 225 Tran 271	<u>Spring 1976</u> H S 203 Tran 283	<u>Spring 1977</u> H S 178 Tran 315	<u>Spring 1978</u> H S 147 Tran 272	<u>Spring 1979</u> H S 193 Tran 291				
<u>Year Total</u> H S 2033 = 63% Tran 1174 = 37%	<u>Year Total</u> H S 2144 = 63% Tran 1254 = 37%	<u>Year Total</u> H S 2186 = 61% Tran 1420 = 39%	<u>Year Total</u> H S 2370 = 64% Tran 1336 = 36%	<u>Year Total</u> H S 2193 = 61% Tran 1422 = 39%				
TOTAL 3207	TOTAL 3398	TOTAL 3606	TOTAL 3706	TOTAL 3615				

Compiled by Office of Admissions
May, 1979

NEW UNDERGRADUATE STUDENTS BY YEAR
1967-68 THROUGH 1978-79



Number of New Undergraduate Part-Time Students as Percent of Total New Undergraduate Enrollment for Fall and Spring Semesters

	1968-69	1969-70	1970-71	1971-72	1972-73
Fall	126 - 4.5%	125 - 4.3%	139 - 5.4%	139 - 5.6%	147 - 6.5%
Spring	44 - 19.0%	75 - 27.9%	48 - 15.8%	68 - 19.5%	75 - 24.2%
Total	170 - 5.6%	200 - 6.4%	187 - 6.5%	207 - 7.3%	222 - 8.7%
	1973-74	1974-75	1975-76	1976-77	1977-78
Fall	273 - 11.2%	222 - 8.8%	264 - 9.8%	276 - 9.6%	330 - 10.8%
Spring	123 - 28.7%	168 - 33.9%	166 - 34.2%	177 - 35.9%	164 - 39.1%
Total	396 - 13.8%	390 - 12.9%	430 - 13.5%	453 - 13.5%	494 - 14.2%
	1978-79				
Fall	297 - 10.1%				
Spring	208 - 43.0%				
Total	505 - 14.8%				

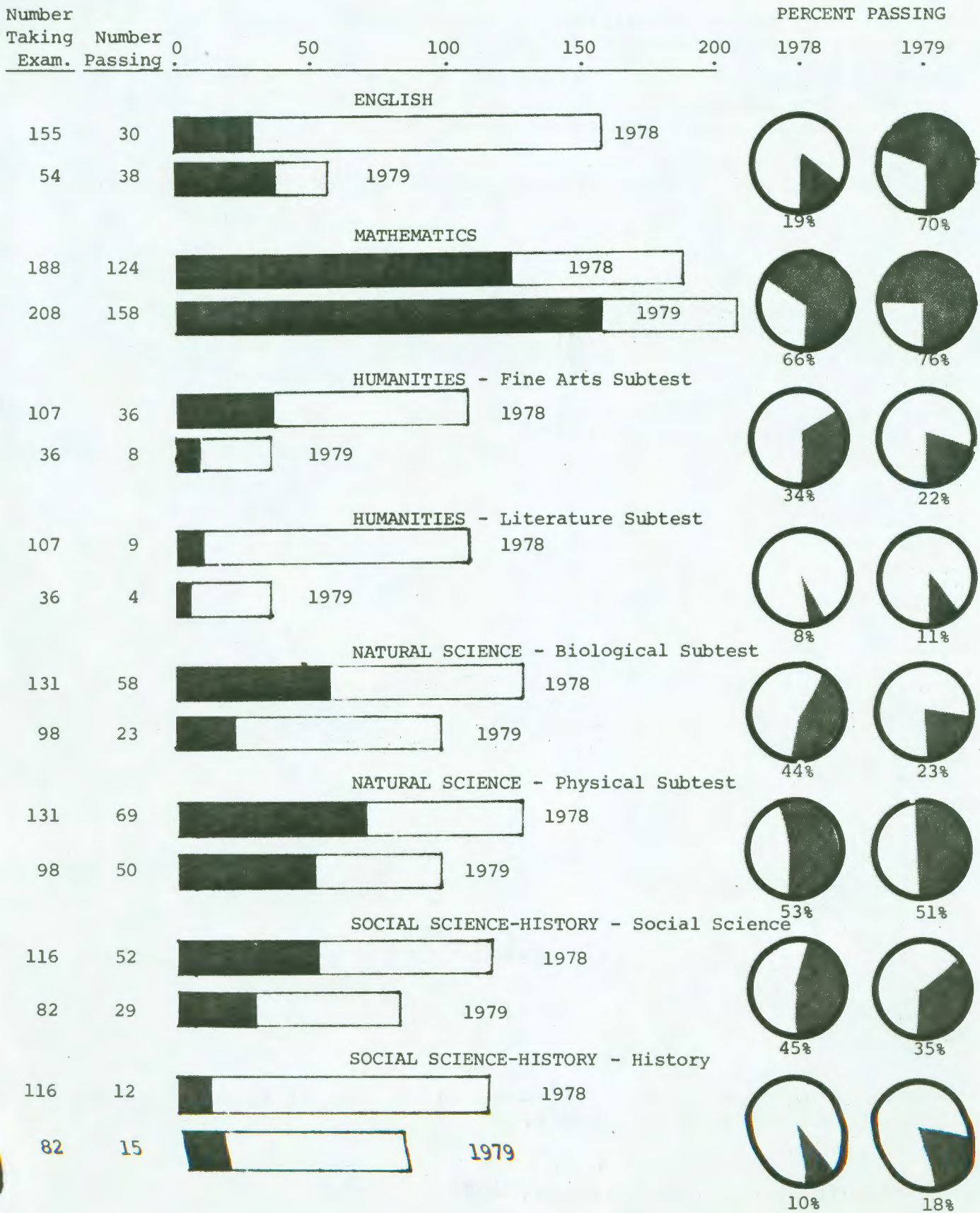
SCHOLARSHIP SUMMARY DATA
FALL SEMESTERS

	<u>1967</u>	<u>1968</u>	<u>1969</u>	<u>1970</u>	<u>1971</u>	<u>1972</u>	<u>1973</u>	<u>1974</u>	<u>1975</u>	<u>1976</u>	<u>1977</u>	<u>1978</u>
UNDERGRADUATES												
Average Load												
All Students	14.80	14.90	14.40	14.45	14.30	14.40	14.37	14.00	14.07	13.89	13.73	13.60
Freshmen	15.00	15.20	14.60	14.51	14.23	14.08	13.91	13.83	13.93	13.82	13.77	13.56
Sophomores	15.10	15.20	14.70	14.63	14.53	14.40	14.60	14.38	14.70	14.34	14.08	14.05
Juniors	14.90	14.90	14.40	14.49	14.72	14.83	14.99	14.60	14.65	14.41	14.28	14.01
Seniors	14.00	14.10	13.80	14.10	14.20	14.36	14.48	13.87	13.96	13.76	13.64	13.69
Median Grade Index												
All Students	2.40	2.43	2.53	2.59	2.73	2.82	2.83	2.86	2.79	2.77	2.75	2.75
Average Grade Index												
All Students	2.38	2.42	2.53	2.59	2.70	2.77	2.76	2.76	2.69	2.73	2.70	2.70
Men	2.26	2.30	2.43	2.46	2.57	2.63	2.63	2.61	2.53	2.59	2.57	2.54
Women	2.47	2.51	2.60	2.68	2.81	2.89	2.86	2.90	2.82	2.84	2.80	2.83
Freshmen	2.20	2.23	2.31	2.44	2.48	2.47	2.45	2.47	2.39	2.52	2.46	2.41
Sophomores	2.33	2.37	2.50	2.54	2.67	2.75	2.77	2.75	2.75	2.75	2.73	2.74
Juniors	2.46	2.47	2.60	2.67	2.81	2.92	2.89	2.97	2.88	2.87	2.86	2.83
Seniors	2.75	2.75	2.86	2.83	3.01	3.10	3.10	3.13	3.09	3.03	3.06	3.02
GRADUATES												
Average Load	5.90	5.60	5.61	6.07	6.86	6.87	6.26	6.36	6.25	5.89	5.65	4.87
Median Grade Index	3.00	3.25	3.33	3.31	3.40	3.50	3.63	3.67	3.63	3.60	3.67	3.67
Average Grade Index	3.18	3.25	3.38	3.40	3.37	3.42	3.47	3.48	3.46	3.48	3.47	3.50

SCHOLARSHIP SUMMARY DATA
SPRING SEMESTERS

	<u>1968</u>	<u>1969</u>	<u>1970</u>	<u>1971</u>	<u>1972</u>	<u>1973</u>	<u>1974</u>	<u>1975</u>	<u>1976</u>	<u>1977</u>	<u>1978</u>	<u>1979</u>
UNDERGRADUATES												
Average Load												
All Students	14.10	14.66	14.35	14.45	14.65	14.60	14.48	14.14	13.97	13.92	13.78	13.57
Freshmen	15.40	15.02	14.50	14.56	14.56	14.37	14.29	14.00	13.84	13.94	13.89	13.68
Sophomores	15.10	14.95	14.51	14.66	14.69	14.54	14.67	14.50	14.69	14.18	14.10	13.99
Juniors	15.10	14.57	14.50	14.56	14.93	15.02	15.01	14.69	14.59	14.43	14.29	14.01
Seniors	13.90	14.08	13.90	14.04	14.43	14.51	14.43	14.08	13.74	13.69	13.51	13.58
Median Grade Index												
All Students	2.44	2.53	2.69	2.71	2.86	3.00	3.00	2.92	2.78	2.88	2.80	2.81
Average Grade Index												
All Students	2.43	2.53	2.71	2.69	2.81	2.90	2.86	2.81	2.73	2.79	2.74	2.74
Men	2.32	2.44	2.63	2.57	2.66	2.78	2.72	2.66	2.59	2.63	2.58	2.58
Women	2.52	2.60	2.76	2.78	2.94	3.01	2.99	2.97	2.85	2.92	2.87	2.87
Freshmen	2.27	2.36	2.57	2.50	2.63	2.70	2.62	2.56	2.56	2.64	2.53	2.54
Sophomores	2.38	2.48	2.65	2.66	2.78	2.85	2.81	2.77	2.67	2.76	2.68	2.70
Juniors	2.46	2.57	2.75	2.77	2.85	2.96	2.94	2.94	2.80	2.85	2.89	2.81
Seniors	2.71	2.79	2.92	2.90	3.02	3.10	3.11	3.09	3.00	3.00	3.02	3.01
GRADUATES												
Average Load	5.8	5.68	5.78	6.43	7.07	6.41	6.53	6.37	6.26	5.93	5.82	5.36
Median Grade Index	3.25	3.46	3.50	3.40	3.50	3.67	3.69	3.73	3.60	3.67	3.67	3.67
Average Grade Index	3.27	3.34	3.48	3.42	3.45	3.49	3.50	3.50	3.44	3.51	3.47	3.51

COLLEGE LEVEL EXAMINATION PROGRAM
1978-79 GENERAL EXAMINATION DATA



CLEP GUIDELINE GROUPS COMPARED TO NON-GUIDELINE GROUPS

CLEP Results of Students Falling In The Guideline Group, Compared To Students Not In The Guideline Group:

Group A Guideline Group = Students ranking in the top 20% of their high school class, 28 and above in related ACT areas and 28 composite score.

Group B Non-Guideline Group = Students not in top 20%, 27 or less in related ACT area and 27 or less composite score.

CLEP EXAMINATIONS	Students in Group		Number Scoring 70th Percentile or Higher		Percent Passing	
	1978	1979	1978	1979	1978	1979
	English Composition					
Group A	9	5	7	5	78	100
Group B	76	31	7	21	9	68
Humanities						
Fine Arts						
Group A	28	11	15	2	54	18
Group B	40	16	4	5	10	31
Literature						
Group A	28	11	4	3	14	27
Group B	40	16	0	1	0	6
Mathematics						
Group A	36	43	36	43	100	100
Group B	92	111	49	85	53	77
*	(58)	(73)	(26)	(46)	(45)	(63)
Natural Science						
Biological						
Group A	27	24	19	9	70	38
Group B	62	51	19	7	31	14
Physical						
Group A	27	24	21	18	78	75
Group B	62	51	24	20	39	39
Social Science-History						
Social Science						
Group A	19	14	15	11	79	79
Group B	54	48	18	12	33	25
History						
Group A	19	14	4	6	21	43
Group B	54	48	1	8	2	17

*Students from Group B not in top 20%, 24 or less in related ACT area and/or 24 or less composite score.

