

Winter 1967

Winter Press Book 1966-67

State College of Iowa

Let us know how access to this document benefits you

Copyright ©1967 Athletics, State College of Iowa

Follow this and additional works at: <https://scholarworks.uni.edu/amg>



Part of the [Higher Education Commons](#)

Recommended Citation

State College of Iowa, "Winter Press Book 1966-67" (1967). *Athletics Media Guides*. 34.
<https://scholarworks.uni.edu/amg/34>

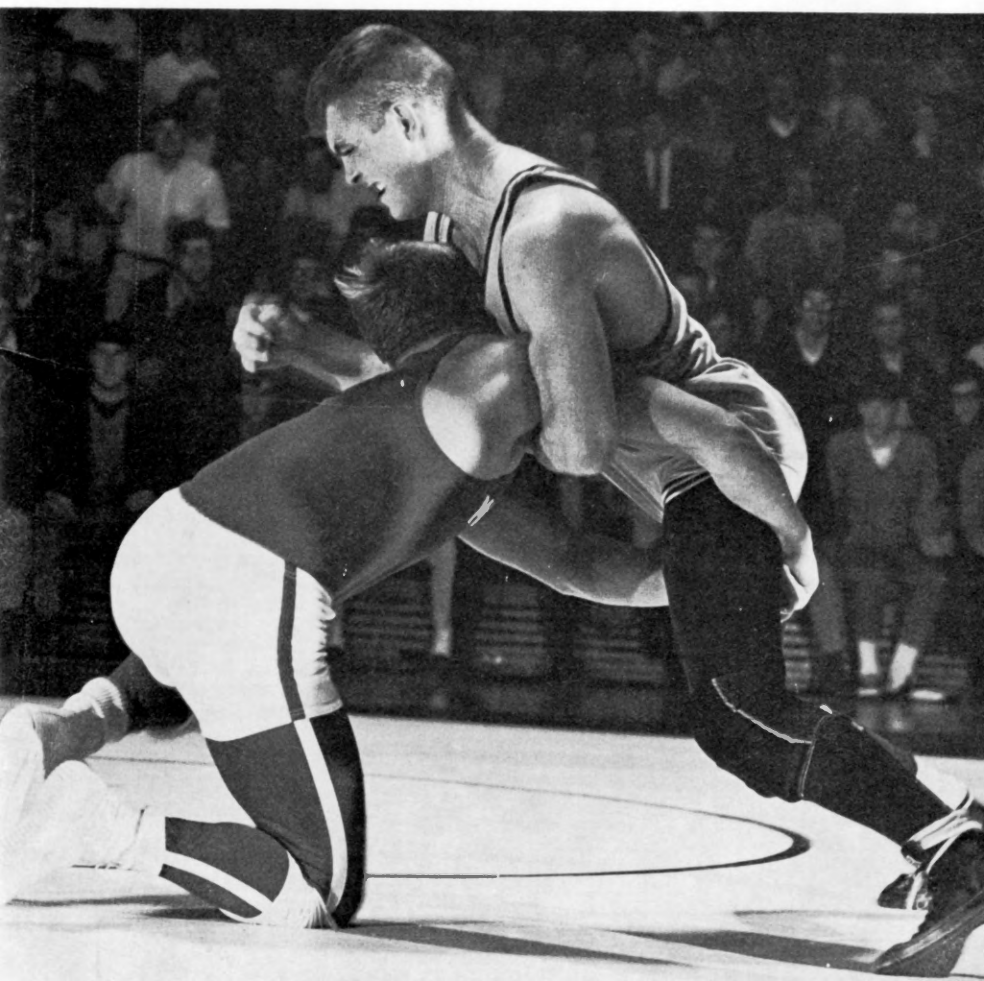
This Book is brought to you for free and open access by the Athletics at UNI ScholarWorks. It has been accepted for inclusion in Athletics Media Guides by an authorized administrator of UNI ScholarWorks. For more information, please contact scholarworks@uni.edu.

Offensive Materials Statement: Materials located in UNI ScholarWorks come from a broad range of sources and time periods. Some of these materials may contain offensive stereotypes, ideas, visuals, or language.

Winter Press Book 1966-67

State College of Iowa

Cedar Falls, Iowa



1966-67 SCI Wrestling Schedule

Nov.	26	at Minnesota Quadrangular (SCI, Iowa, Iowa State, Minnesota)
Dec.	3	SCI INVITATIONAL
Dec.	9	at Michigan State
Dec.	10	at Eastern Michigan
Dec.	17	at Illinois
Jan.	7	SCI QUADRANGULAR (SCI, Wisconsin, Bemidji State, Ft. Hays, Kan.)
Jan.	12	LUTHER
Jan.	14	SOUTH DAKOTA STATE
Jan.	26	at Mankato State
Jan.	28	at Moorhead State Quadrangular (SCI, Moorhead State, Concordia, Hamline)
Feb.	2	COLORADO
Feb.	4	at Minnesota Quadrangular (SCI, Minnesota, Illinois, Michigan State)
Feb.	8	CORNELL
Feb.	11	NORTHERN ILLINOIS
Feb.	17	IOWA STATE
Mar.	3-4	NCC Meet at Brookings, S.D.
Mar.	10-11	NCAA College Division Meet at
Mar.	23-4-5	NCAA University Division Meet at

Home Meets: Varsity.....7:30 p.m.

Freshman.....6:00 p.m.

Home meets in CAPS

CONTENTS

1966-67 Wrestling Schedule	Inside Front Cover
Wrestling Outlook	1
Wrestling Sketches	2-3
1965-66 Dual Mat Records	4
Wrestling Records	4
1965-66 Conference Champions	4
Former NCAA Champions	5
SCI Olympic Games Entries	5
Wrestling Leaders at SCI	5
1965-66 Dual Meet Records	6
SCI Record vs 1966-67 Opponents	6
SCI Wrestling Coaches' Records	6
All-Time Wrestling Records	7
Indoor Track Outlook and Schedule	8
Indoor Track Records	9
1966-67 Wrestling Roster	10
1966-67 Basketball Roster	11
Basketball Outlook	12

Former All-America Cagers	12
Basketball Records	13
1965-66 All-Conference Team	13
Basketball Sketches	14-15
All-Time Scoring Leaders	16
Top Cage Scoring Performances	16
North Central Conference Records	17
1965-66 Conference Standings	17
SCI's Record vs 1966-67 Opponents	17
1965-66 Team Statistics	18
1965-66 Basketball Results	18
All-Time Basketball Records	19
Gymnastic-Swimming Outlook, Schedules	20
1966-67 Basketball Schedule	Inside Back Cover
Press Information	Inside Back Cover
Coaches Biographies	Back Cover

SCI Wrestling

Chuck Patten's State College of Iowa wrestling team has dates with such national powers as Iowa State, Michigan State, Minnesota, and Colorado.

Yet, Chuck Patten is optimistic. He's set just two main goals for his Panther matmen and he feels they can accomplish both.

"First," he said, "we are out to win the conference title and we'll have to work hard to dethrone South Dakota State, especially with the tournament up there again."

"Second, we want to break even on the season, do no worse than 50-50 against what I consider extremely tough competition. We did it last year and I think we have a fighting chance to do it again. We have 19 dual meets, including three quadrangular meets that add up to three duals in one day.

"If we can finish 10-9 I'll feel our team has done a good job."

SCI continues to take on the tops in the land for several reasons, according to Patten. "They want to wrestle us. Our men give them a good go win or lose. If we were a pushover they'd drop us. Also, we feel we have to meet the best to get our men ready for the national tournaments.

"Don Parker knows himself that if he had not had to face some of the best in the land during the regular season last year he would have had much less chance in the college division meet. Today, he's a national champion."

Parker, the reigning 177-pound king of the college division, is back and gives the Panther squad a sparkle. But, there are others and Patten feels for the first time in his three years of coaching at SCI he has a solid block of potential winners in five successive weights.

"From 145 pounds to 177 we have a solid team. Anyone of them can win and all of them will give their opponent a rough time, win or lose. They'll help us keep the pressure on," says Patten.

Jerry Bond is in solid at 145 and proved as a sophomore he could be a consistent winner. Bond is the defending NCC champ at 145 and was elected co-captain of the team along with Parker.

At 152 veteran Dennis Goetz is the best bet, followed by Tom Horton at 160 and Jim Guyer at 167. All three are tough physically and mentally. "They just hate to lose," said Patten.

With effort, Patten can see that solid block expanding on either end. "We can be tough from 137 through heavyweight," he added. "We have a great battle going at 137 between Larry Rechtfertig and Lynn Lamb and competition breeds excellence. At the top weight we are hoping Bruce Gulick will come out following football, and at the semester we pick up Kent Osboe and he'll be the first full-sized heavyweight I've ever had. He's 6-4 and 250 and has good quickness for a man his size."

The lower weights are still SCI's problem and Patten admits it. "We just don't have quite enough as yet, but we should be improved over last year. Jim Kinyon appears to be the best bet at 123 along with Jim Elliott, with letterman Jim McCrillis or Terry Lawton at 130. I like Kinyon, he's a fighter on the mat."

Patten has already lost a pair of potential starters. Kent Spangler, a top candidate for 137-pound honors, broke his wrist the first week of practice and is out for the year. Dave Steinkamp, a letterman and sixth place NCAA finisher last year at 160, is also gone, suffering severe facial lacerations in a homecoming week accident as he helped prepare a float for the annual parade.

Depth is still a problem at most weights but veteran Larry Messerly is a plus. He can do a creditable job at two weights as back up man and push each starter during the week.



Don Parker



Jerry Bond



Dennis Goetz



Larry Messerly

Wrestling Sketches

**Don Parker, 177-pounds, Senior
Co-Captain, Hawkeye, Ia., Letterman**

Parker is the NCAA College Division champion at 177-pounds and the leader in SCI's campaign for a second straight winning record against a tough schedule. Parker had a brilliant junior campaign, posting a 20-2-0 record. His only losses were to Iowa State's national champion Tom Peckham (7-1) (in regular season) and to Jerry Swope of Lock Haven in the university division tournament's second round (9-1). Parker, who scored 13 decisions and seven pins in 1965-66, goes for a second straight national crown and his third straight conference title. He was the NCC's outstanding wrestler and winner of the quick pin trophy last year.

**Jerry Bond, 145-pounds, Junior
Co-Captain, Newton, Ia., Letterman**

Bond was the number two man on the SCI mat squad in 1965-66, winning the conference crown with a pin over South Dakota State's Darrel Smith in 1:14. Smith had beaten him earlier in the year. Jerry, SCI's top sophomore, finished with a 10-8-1 record on the year and holds promise of finer things to come.

**Jim Guyer, 167-pounds, Sophomore,
West Union, Ia.**

A graduate of the same school that produced Parker, Guyer is the most promising sophomore in the SCI stable. A tough competitor with great body balance on the mat, he adds strength in the middle of the SCI lineup. Finished a strong third in SCI Invitational last year and posted a 6-1 dual record.

**Tom Horton, 160-pounds, Junior,
Fort Dodge, Ia.**

A transfer student, Horton becomes eligible this fall and is slated to start at 160 pounds. Much like Guyer, he is a tough competitor and has a promising future.

**Dennis Goetz, 152-pounds, Senior,
Davenport, Ia., Letterman**

Coach Patten feels Goetz can step into a starting role at 152 pounds and make a major contribution to the SCI team. In his first year of competition as a junior he posted a 2-4-1 record at 160. Could be much more effective at lower weight.

**Kent Osboe, heavyweight, Sophomore,
Fort Dodge, Ia.**

Osboe will become eligible at the semester and will give SCI its first full-sized heavyweight in years. At 6-4, 250-pounds, he has the size and he has great quickness to go with it. His addition could make SCI solid at every spot from 145-pounds up. He had a 2-0 record on frosh squad last year in second semester.

**Larry Rechtfertig, 137-pounds, Junior,
Waterloo, Ia.**

A leading candidate for the 137-pound job, Rechtfertig also is a graduate of North High of West Union as are Parker and Guyer. A transfer student, he posted a 5-3 mark with the frosh last year.

**Lynn Lamb, 137-pounds, Sophomore,
Cedar Rapids, Ia.**

Lamb will battle Rechtfertig for the starting job at 137 and the close competition will help the Panther effort.



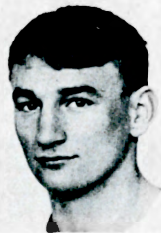
Tom Horton



Larry Rechtfermig



Kent Osboe



Jim Guyer

**Jim McCrillis, 130-pounds, Senior,
New Hampton, Ia., Letterman**

A veteran, McCrillis has fought knee trouble that knocked him out of his sophomore year. Last year he posted a 2-6 record at 123 and 130. Will get stiff competition from sophomore Terry Lawton.

**Jim Kinyon, 123-pounds, Junior,
Greenfield, Ia.**

Kinyon may be the medicine SCI needs at 123 pounds. They won only one match in dual action at this weight in 1965-66. Kinyon, a good battler, is counted on to give a stiffer challenge to opponents in 1966-67.

**Dennis Mercer, 160-pounds,
Sophomore, Corning, Ia.**

Mercer could be one of the surprises this year. He posted a 3-4 record as a freshman but showed splashes of brilliance. A more steady performance could push him into a battle with Horton for the 160-pound job.

**Larry Messerly, 167-pounds, Junior,
Fort Dodge, Ia., Letterman**

Messerly is a plus for SCI. A great competitor he loves combat and will push Guyer at 167. He can also move up to 177 should Parker run into injury problems, making him SCI's number one backup man.

**Rich Boston, 177-pounds, Senior,
Des Moines, Ia.**

Boston has been Parker's backup man for two years. In brief action last year he had an 0-2 record. Can go at 191 when tournament time rolls around.

**Tom Cameron, 123-pounds, Junior,
Hammond, Ind., Letterman**

Cameron may miss 1966-67 campaign due to illness. Posted a 2-6 record last year and could help push Kinyon if he regains full strength.

**Rich Farmer, 130 pounds, Sophomore,
Vinton, Ia.**

Farmer was 2-1 in freshman year. Added experience could put him in picture in second half of season.

**Terry Lawton, 130-pounds, Sophomore,
Ackley, Ia.**

Lawton should be in 130-pound picture and could become starter over McCrillis. Had 1-3 record as freshman.

**Gary Neal, 152-pounds, Senior,
Mt. Vernon, Ia.**

Out of wrestling for a few years, Neal could challenge at 152 pounds if Goetz has trouble making that weight.

**Duane Nosbisch, 177-pounds, Junior,
New Hampton, Ia.**

A junior college transfer from Rochester JC, Nosbisch will help Parker and is a potential starter. A value right now as a backup man and a potential starter.

**Al Pearson, 137-pounds, Senior,
Waterloo, Ia.**

Pearson is in the picture at 137 making it a three way battle that could produce another strong performer at this weight.

**Wayne Shutt, 115-pounds, Junior,
Des Moines, Ia., Letterman**

Shutt, really too small for 123, will be of great value at tournament time and could figure in at 123 if others stumble. Posted a 3-5 record last year.

**Paul Clayburn, 123-pounds,
Sophomore, Waterloo, Ia.**

Clayburn will become eligible at the semester and could figure heavily in the 123-pound picture at that time.

**Bruce Gulick, heavyweight,
Sophomore, Cedar Falls, Ia.**

Gulick, a starting tackle in football, will help SCI in two ways. He'll be number one until the semester and could give Osboe the real challenge he needs from there on in.

Wrestling Records

Most Wins, Season: 11 in 1950
Most Losses, Season: 8 in 1965
Consecutive Dual Wins: 32, 1948-51
Most Points, Season: 256 in 1950
Most Points, Against, Season: 234 in 1965
Biggest Score in Dual Meet: 38 vs Western Illinois, 1948
Biggest Score Against in Dual: 36, Oklahoma St., 1965
Biggest Margin: 38, SCI 38-0 over W. Illinois, 1948
Biggest Margin Against: 36, Okla. St. 36-0, 1965
Most Pins, Dual: 7 vs W. Illinois, 1948 (8 matches)
Consecutive Dual Losses: 6 in 1936-37, 1963
Individual Dual Record: Bill Dotson, 34-0-0, 1961-62-63

Wrestling Notes

- Coach McCuskey was not shutout in 140 dual meets.
- SCI shutout only 7 times in 319 duals.
- SCI registered 17 shutouts in 319 duals.
- The SCI-Iowa State series has a peculiar twist to it. Iowa State opened the long series with 12 straight victories and SCI came back with 11 straight from 1940 through 1952. Iowa State has won last seven meetings.
- SCI is 20-0 against Nebraska in series ratings, 13-1 against Wisconsin, 13-0 against Luther.

1965-66 Wrestling Results

Won 6, Lost 5

SCI 17, Illinois 15
SCI 18, Nebraska 14
SCI 34, Cornell 3
SCI 25, Luther 10
SCI 0, Iowa State 35
SCI 16, St. Cloud St. 14
SCI 9, South Dakota St. 18

SCI 18, Mankato State 16
SCI 6, Moorhead State 25
SCI 10, Michigan State 24
SCI 6, Winona State 23
NCC Finish: Second (SDSU, Champion)
NCAA Finish: Tenth (College Division)

1965-66 Conference Champions

115 — Frank Murphy, SDSU
123 — Jerry Smith, SDSU
130 — Don Miller, SDSU
137 — Stan Lambert, SDSU
145 — JERRY BOND, SCI
152 — Terry Linander, SDSU
160 — Dennis Campbell, SDSU

167 — Mike Kain, SDSU
177 — DON PARKER, SCI*
191 — Dave Baade, USD
Hwt — Mick Hurlburt, SDSU
* Parker named outstanding wrestler in tournament. Also won fastest pin trophy.

Team Standings

1. South Dakota State 113
2. State College of Iowa 83
3. South Dakota U. 40

4. Augustana 35
North Dakota U., North Dakota State,
Morningside unable to make tournament due to snow storm.

SCI's National Wrestling Champions

UNIVERSITY DIVISION

1937 — Ray Cheney, 135
1946 — Cecil Mott, 121
*Gerald Leeman, 128
Bill Koll, 145
1947 — Russ Bush, 128
*Bill Koll, 145
Bill Nelson, 165
1948 — *Bill Koll, 145
1949 — Keith Young, 145
Bill Nelson, 155
Bill Smith, 165

1950 — Keith Young, 145
Bill Nelson, 155
Bill Smith, 165
1951 — Keith Young, 145
1952 — Gene Lybbert, 130
Bill Weick, 157
1953 — Jim Harmon, 157
1955 — Bill Weick, 157
1963 — Bill Dotson, 137
* Outstanding wrestler in N C A A
tournament

COLLEGE DIVISION

1963 — Bill Dotson, 137
Jim Sanford, 147

1966 — Don Parker, 177

SCI's Olympic Games Entries

1932 — Maynard Harmon, 145 (at Los Angeles, Calif.)
1948 — Gerald Leeman, 125½
Bill Koll, 147½ (at London, England)
Bill Nelson, 160½
1952 — Bill Smith, 160½ — CHAMPION — (at Helsinki, Finland)

Wrestling Leaders

3-TIME NCAA CHAMPS

Bill Koll, 1946-47-48
Keith Young, 1946-50-51
Bill Nelson, 1947-49-50

2-TIME NCAA CHAMPS

Bill Smith, 1949-50
Bill Weick, 1952-55

UNDEFEATED WRESTLERS

(Career)
Bill Koll — Duals — Tourneys
Keith Young — Duals — Tourneys
Bill Dotson — Duals
Bill Smith — Duals
Gerald Leeman — Duals

1965-66 Individual Records

(Includes all regular season nine minute matches, conference, NCAA university and college division tournament matches)

Wrestler	Won by			Lost by			Points	W	L	D
	Dec.	Fall	For.	Dec.	Fall	Draw				
DON PARKER	13	7	0	2	0	0	74-6	20	2	0
JERRY BOND	7	2	1	8	0	1	38-26	10	8	1
Bob Trautman	5	1	0	2	2	0	18-16	6	4	0
Rich Engel	1	1	1	2	0	1	15-8	3	2	1
Lee Wise	1	1	0	1	0	0	8-3	2	1	0
LARRY MESSERLY	2	3	0	4	2	0	21-22	5	6	0
DAVE STEINKAMP	5	1	0	5	4	1	20-38	6	9	1
WAYNE SHUTT	2	0	1	5	0	0	11-15	3	5	0
Jerry Cole	1	2	0	6	0	1	15-20	3	6	1
DENNIS GOETZ	1	1	0	3	1	1	10-16	2	4	1
Dean Kiger	2	0	1	7	1	3	17-32	3	8	3
JIM MC CRILLIS	1	1	0	5	1	0	8-20	2	6	0
TOM CAMERON	2	0	0	6	0	0	6-18	2	6	0
Mike Wingert	1	0	0	4	2	0	3-22	1	6	0
Roger Whorton	2	0	0	7	3	0	6-36	2	10	0
Jim Vollentine	0	1	0	0	0	1	7-2	1	0	1
Ron Owen	0	0	1	1	0	0	5-3	1	1	0
RICH BOSTON	0	0	0	2	0	0	0-6	0	2	0
Jim Monroe	0	0	0	3	0	0	0-9	0	3	0

Wrestling Coaching Records

Coach	Years Coached	Won	Lost	Tied	Pct.	NTW
Bender	1923-1930 (8)	18	9	0	.666	0
McCuskey	1931-1952 (20)	102	31	7	.766	17
Koll	1953-1964 (11)	71	42	6	.628	5
Lyons	1958-1958 (1)	8	2	1	.800	0
Patten	1965- (2)	8	13	1	.380	1
NTW — National Title Winners						

SCI Series Record vs 1966-67 Opponents

Opponent	Series Began	Last Meeting	SCI Won	SCI Lost	Tied	Pct.
Bemidji State	1967	0	0	0	.000
Colorado	1962	1965	0	4	0	.000
Concordia	1967	0	0	0	.000
Cornell	1923	1966	24	9	1	.685
Eastern Michigan	1967	0	0	0	.000
Fort Hays (Kansas) State	1967	0	0	0	.000
Hamline	1967	0	0	0	.000
Illinois	1930	1966	11	7	3	.611
Iowa State	1924	1966	11	18	0	.379
Luther	1954	1966	13	0	0	1.000
Mankato State	1953	1966	7	7	0	.500
Michigan State	1943	1966	8	11	3	.421
Minnesota	1931	1966	13	16	3	.448
Moorhead State	1966	1966	0	1	0	.000
Northern Illinois	1958	1961	3	0	1	1.000
South Dakota State	1954	1966	10	2	1	.833
Wisconsin	1927	1959	13	1	0	.928

All-Time Wrestling Results

Year	Coach	W-L-T	TP	OP	NCAA Place
1923	Paul Bender	1-0-0	16	8	-----
1924	Paul Bender	2-2-0	47	34	-----
1925	Paul Bender	4-1-0	85	25	-----
1926	Paul Bender	2-1-0	51	35	-----
1927	Paul Bender	2-2-0	66	38	-----
1928	Paul Bender	2-0-0	51	15	-----
1929	Paul Bender	4-0-0	94	32	-----
1930	Paul Bender	1-3-0	35½	85½	-----
1931	Dave McCuskey	3-2-0	93½	56½	-----
1932	Dave McCuskey	5-2-0	142½	83½	-----
1933	Dave McCuskey	2-1-0	46½	45½	-----
1934	Dave McCuskey	3-2-1	100½	80½	7th
1935	Dave McCuskey	3-3-0	135½	78½	-----
1936	Dave McCuskey	1-6-0	84½	119½	-----
1937	Dave McCuskey	4-2-1	138	78	3rd
1938	Dave McCuskey	6-1-0	141½	84½	13th
1939	Dave McCuskey	4-3-0	123½	90½	-----
1940	Dave McCuskey	7-1-0	148½	79½	8th
1941	Dave McCuskey	7-0-1	144	70	10th
1942	Dave McCuskey	2-4-0	68	98	10th
1943	Dave McCuskey	2-0-1	57	31	-----
1944-55	No Wrestling				
1946	Dave McCuskey	5-0-1	127	51	2nd
1947	Dave McCuskey	5-0-2	154	51	2nd
1948	Dave McCuskey	8-1-0	225	57	4th
1949	Dave McCuskey	9-0-0	197	60	2nd
1950	Dave McCuskey	11-0-0	256	51	1st
1951	Dave McCuskey	9-1-0	192	89	4th
1952	Dave McCuskey	6-2-0	152	71	2nd
1953	Bill Koll	4-2-1	112	89	4th
1954	Bill Koll	3-4-0	83	115	-----
1955	Bill Koll	8-1-2	200	118	11th
1956	Bill Koll	10-0-0	220	85	10th
1957	Bill Koll	6-3-0	169	107	-----
1958	Ed Lyons	8-2-1	213	106	14th
1959	Bill Koll	8-4-0	228	118	-----
1960	Bill Koll	6-3-2	177	139	-----
1961	Bill Koll	10-2-0	230	109	8th
1962	Bill Koll	5-9-0	193	197	5th
1963	Bill Koll	5-7-1	168	193	*3rd
1964	Bill Koll	6-7-0	146	232	*6th
1965	Chuck Patten	2-8-1	90	234	-----
1966	Chuck Patten	6-5-0	149	197	*10th

Record: Won-207, Lost-97, Tied-15

SCI Points: 5,550. Opp. Points: 3,737

* College Division Tournament

ON THE COVER — SCI's NCAA College Division champion at 177-pounds, Don Parker, is shown on the right in action against Moorhead State's Frank Mosier. Parker won an exciting match 6-5 on his way to a 20-2 season and the NCAA crown.

SCI Indoor Track

State College of Iowa's indoor season is wrapped up in two knees and a group of promising sophomores.

Coach Jack Jennett has his eyes on a number of items . . . namely the healing knees of veteran triple jumper Bill Rauhauser and shot putter Mark Harper, and the promising prospects of such talented sophomores as Larry McCready, Larry Abrams, Tom Denney, Tom Stott, Dennis Coon, Howard Davis and Tom Gilmore.

Jennett casts a narrow eye at the sprints and pole vault, calls the distance running better than 1966, the relay team improved, the weight department in need of added beef and the hurdle corps the finest single event on the list for SCI.

Rauhauser's value, when healthy, is unquestioned. He's been an automatic double winner in the broad jump and triple jump for two years and can run with most of the opposition in the short sprints. He scored 102 points in 10 outings last winter and failed to win his jumping specialties only once, when they didn't triple jump at all. He set the indoor record of 46-7 against Iowa State.

Harper is the lone hope in the weights until basketball is over and big Ken Huelman comes on the scene to help.

McCready is the big name among the sophomores. He's capable of winning in three events — the high and low hurdles and high jump — can help in the broad jump and triple jump and run in relays.

Among the lettermen back Mark Sanborn, Roger Arthur, Art Strong, Don McKinney, Dick Forcht and Fred Ruchti are counted upon for big point contributions.

1967 SCI Indoor Track Schedule

- Feb. 11 Western Illinois, 1:00 p.m.
 Feb. 18 SCI Quadrangular,
 12:30 p.m.
 Feb. 25 Mankato State, 1:00 p.m.
 Mar. 1 Wartburg-Westmar,
 6:30 p.m.
 Mar. 6 Iowa State, 6:30 p.m.
 Mar. 11 South Half NCC Meet,
 11:00 a.m.
 Mar. 14 Grinnell, 6:30 p.m.
 Mar. 18 Iowa College Indoor Invitational,
 1:00 p.m.
 Mar. 25 North Central Conference
 Meet at Mankato State
 All meets at home except conference
 meet

1966 Indoor Track Results

- SCI 74, SCI Frosh 39
 SCI 98½, Wartburg 28½, Coe 13
 SCI 81, C. Missouri 36, Cornell 23
 SCI 45, Mankato State 68
 SCI 91, Wartburg 51, Platteville 12,
 Simpson 8
 SCI 49, Iowa State 82
 SCI 92, Grinnell 29
South Half NCC Meet
 SCI 94, USD 55, Morn. 21, Aug. 7
Iowa Invitational Meet
 SCI 88, Luther 67, Wartburg 43,
 Cornell 25, Dubuque 20,
 Loras 17, Buena Vista 6,
 Grinnell 4

Indoor Stadium Records

Event	Time	Holder	School	Year
60 Dash	:6.2	Bill Hall — SCI		1949
	:6.2	Frank Robinson — SCI		1957
	:6.2	Duane Jacobson — Augustana		1962
	:6.2	J. W. Burden — Iowa State		1962
60 Highs	:7.4	Roger Freeman — SCI		1958
60 Lows	:6.8	Larry Stater — NE Missouri		1958
440 Dash	:49.7	Dave Suntken — SCI		1964
600 Dash	1:16.0	Steve Carson — Iowa State		1966
880 Run	1:53.0	Ray Eiben — SCI		1953
1000 Run	2:20.4	Brian Kuhlman — Iowa State		1966
Mile Run	4:21.5	Jay Prichard — SCI		1964
2-Mile Run	9:38.1	Dave Lee — Iowa State		1966
High Jump	6-6	Larry Eilert — Iowa State		1963
Long Jump	23-4	John Begley — SCI		1962
Triple Jump	46-7	Bill Rauhauser — SCI		1966
Pole Vault	13-7	Ray Emerson — Iowa State		1966
	13-7	Rex Harvey — Iowa State		1966
Shot Put	51-8	Larry Hofelt — So. Dakota		1959
8-Lap Relay	3:18.6	SCI — Lonnie Wilkinson, Doug Larson,		1964
		Mike Long, Dave Suntken		
2-Mile Relay	8:13.0	SCI — Leland Crew, Bob Bumm,		1951
		Ray Eiben, Don Lange		

Indoor SCI Records

Event	Time	Record Holder	Year
60 Dash	:6.2	Bill Hall	1949
	:6.2	Frank Robinson	1957
60 Highs	:7.4	Roger Freeman	1958
60 Lows	:6.9	Ron Sturch	1957
440 Dash	:49.7	Dave Suntken	1964
600 Dash	1:16.8	John VanVoorhis	1965
880 Run	1:53.0	Ray Eiben	1953
1000 Run	2:22.3	Ron Brinkert	1966
Mile Run	4:21.5	Jay Prichard	1964
2-Mile Run	9:39.6	Jay Prichard	1964
High Jump	6-5½	Dave Suntken	1964
Long Jump	23-4	John Begley	1962
Triple Jump	46-7	Bill Rauhauser	1966
Shot Put	50-3½	Bill Hood	1960
Pole Vault	13-5¾	Don McKinney	1966
8-Lap Relay	3:18.6	Lonnie Wilkinson, Doug Larson,	1964
		Mike Long, Dave Suntken	
2 Mile Relay	8:13.0	Leland Crew, Bob Bumm,	1951
		Ray Eiben, Don Lange	

Wrestling Roster

Wrestler	Wt.	Class	Hometown
Jerry Bond* (c-c)	145	Jr.	Newton
Rich Boston	177	Sr.	Des Moines
Tom Cameron*	123	Jr.	Hammond, Ind.
Paul Clayburn	123	So.	Waterloo East
Rich Farmer	130	So.	Vinton
Dennis Goetz*	160	Sr.	Davenport
Bruce Gulick	Hwt	So.	Cedar Falls
James Guyer	167	So.	West Union
Tom Horton	160	Jr.	Ft. Dodge
James Kinyon	123	Jr.	Greenfield
Bob Martin	191	So.	Algona
Dennis Mercer	160	So.	Corning
Larry Messerly*	167-77	Jr.	Ft. Dodge
James McCrillis*	130	Sr.	New Hampton
Gary Neal	152	Sr.	Mt. Vernon
Duane Noshisch	177	Jr.	New Hampton
Kent Osboe	Hwt	Jr.	Ft. Dodge
Don Parker* (c-c)	177	Sr.	Hawkeye
Al Pearson	137	Sr.	Waterloo East
Larry Rechtfertig	137	So.	Waterloo
Wayne Shutt*	115	Jr.	Des Moines
* Eight lettermen			

Freshman Roster

Name	Wt.	Hometown	Name	Wt.	Hometown
Vincent Bellock	167	Wheaton, Ill.	Jack Parsons	160	Cedar Falls
Milroy Brown	137	Jesup	Marty Polito	130	Ankeny
Thomas Burns	167	Hampton	Louis Rausch	177	Waterloo (East)
Ray Byers	167	Davenport	Marvin Reiland	137	Eagle Grove
James Christensen	123	Cedar Falls	Tom Samp	130	Algona
David Clipperton	160	Rockwell City	Dennis Severson	123	New Hampton
Larry Green	191	Washington	Stan Slessor	130	Reinbeck
John Maehl	152	Elkader	Greg Smith	152	Ft. Madison
Patrick McLuen	160	Perry	Mike Stolmeier	177	Davenport
Richard Nervig	137	Eagle Grove	Brad Stolz	145	New Hampton
Tadd Nichols	167	Iowa Falls	Bill Straw	191	New Hampton
Tim Nichols	160	Iowa Falls	Dennis Swift	152	Greenfield
Dennis Osmundson	123	West Union			

Basketball Roster

Player	Pos.	Ht.	Class	Hometown
Russ Barney	G	6-0	Jr.	Waterloo West
Larry Clausen	G	5-10	So.	Cedar Rapids
Marv DeWaard*	G	6-0	Sr.	Britt
Pat Gabriel	F	6-3	Jr.	Dubuque
Ken Huelman	C	6-7	So.	Schaller
Rich James	F	6-3	So.	Cedar Falls
Daryl Jesse	G	5-11	So.	Jesup
Larry Lust	G	6-2	So.	Newton
Dan Mallin	F	6-2	Jr.	Cedar Falls
Terry Payne	G	6-0	Jr.	Moline, Ill.
Lyle Schwarzenbach*	F	6-4	Sr.	Lake Park
Mark St. Clair*	G	6-2	Jr.	Clinton
Bill Van Zante	F	6-4	So.	Pella
Jerry Waugh*	F	6-3	Jr.	Redding
Rick Wilson	G	6-1	So.	Bloomfield

Freshman Basketball Roster

Player	Pos.	Ht.	Hometown
Don Anderson	F	6-4	Clear Lake
Skip Anderson	F	6-5	Cedar Falls (City High)
Barry Beekman	G	6-3	Storm Lake
Eldon Brasch	G	6-3	Waterloo (Orange)
James Bruns	F	6-3	Eldon (Cardinal of Eldon)
Ron Green	G	5-11	Waterloo (East)
B. J. Lange	F	6-3	Wilton Junction
Rod Larson	C	6-5	Roland
John Martin	F	6-5	Cedar Falls (SC High)
Dick Merritt	F	6-3	Walker
Ron Peterson	G	5-10	Marshalltown
Phil Przychodzin	G	6-2	Cedar Falls (SC High)
Duane St. John	F	6-3	Waterloo (East)
Jim Schniderman	C	6-6	New Hampton

SCI Basketball

All five of last year's starters are gone through graduation along with the sixth man. The youngest squad in Norm Stewart's reign at SCI is on hand. Pre-season injuries have been at an all time high.

That's the preseason picture of basketball at State College of Iowa in a nutshell for 1966-67.

Head coach Norm Stewart, with five winning seasons in a row behind him, may be staring at the bleakest season of all, but he's not letting on if he is. He has a four-point message, and here it is:

"First, this is an unknown team. There is talent on this club, but we are painfully young. I've been pleased with our progress to date and feel we are in better physical condition than any of the first five teams I had at this point of the season. The team has worked harder and longer and its a tribute to them. After seven games we'll evaluate the progress and know more of what our chances are in the conference race.

"Second, junior Jerry Waugh is the closest thing we have to a veteran. He became eligible at the semester last winter and played in only five games, but he can score and he can rebound and right now is our only sure full time performer.

"Third, pre-season injuries have hurt us. Six boys have had trouble in one way or another and it slows them down individually.

"Fourth, Defense is our weakest link starting out. It is the hardest phase of the game to master and it takes time. With so many sophomores on hand it is going to take time. Right now we are not aggressive enough."

SCI wastes no time in getting to the meat of the schedule. They open with Iowa State at McElroy Auditorium in Waterloo, then hit the road for tests at Western Illinois and nationally ranked Southern Illinois.

Stewart is searching for leadership. Waugh, certainly, is being counted on to bring much of it. Stewart feels sophomores Larry Lust and Daryl Jesse could provide extra help.

Waugh and Lust are likely starters at forward with veteran Pat Gabriel and sophomore Bill Van Zante due for extensive service.

Ken Huelman, who at 6-7, is the lone big man on the team, will learn his lessons against the experienced post men in the North Central Conference and could be a vital factor later on. "Huelman," says Stewart, "can shoot and rebound and he is the first real big man we've had in years. He weighs 260." Veteran Lyle Schwarzenbach, with knee problems, is the backup man for Huelman.

The guard court is fairly wide open with Jesse and transfer student Terry Payne the most likely to open there against the Cyclones. Also in the picture are veterans Marv DeWaard, Mark St. Clair, Russ Barney and two sophomores Larry Clausen and Rick Wilson. Clausen, a tiny firebrand, has the aggressiveness that catches Stewart's eye and could be a principle figure in the Panther attack.

Outside shooting should be improved with Jesse, Waugh and Payne on the firing line, rebounding better off with two men with ability on hand, but defense is the biggest if of all.

SCI Basketball Records

INDIVIDUAL

Points, game: 38 by Pete Spoden (vs Morningside), 1963-4
Points, season: 485 by Spoden, 1961-2
Points, career: 1,239 by Spoden, 1960-64 (3 seasons)
Field Goals, game: 16 by Craig Knepe (vs SDSU), 1964-5
Field Goals, season: 192 by Duane Josephson, 1963-4
Field Goals, career: 462 by Spoden, 1960-4
Free Throws, game: 18 by Ron Jessen (vs NDSU), 1964-5
Free Throws, season: 137 by Howie Pigg, 1954-5
Free Throws, career: 315 by Spoden, 1960-4
Consecutive free throws: 23 by Jerry McColley, 1964-5
Consecutive free throws, game: 17 by Jessen (vs NDSU) 64-5
Rebounds, game: 34 by Spoden (vs Winona St.), 1960-1
Rebounds, season: 427 by Al Carew, 1952-3 (25 games)
418 by Jim Jackson, 1958-9 (23 games)
Rebounds, career: 1,104 by Spoden, 1960-4

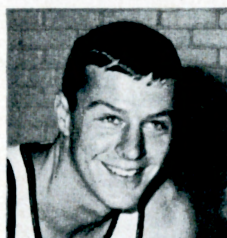
TEAM

Wins, season: 23 in 27 games, 1963-4
Losses, season: 15 in 21 games, 1953-4
Points, game: 107 vs NDSU, 1958-9 (6 Overtimes)
106 vs Wartburg, 1964-5 (Regulation)
Points against: 109 by NDSU, 1958-9 (6 Overtimes)
102 by LaCrosse St., 1955-6 (Regulation)
Points, season: 2,120 in 27 games, 1963-4
Points against, season: 1,838 in 27 games, 1963-4
Points both teams, game: 216 (NDSU 109, SCI 107) 1958-9
189 (SCI 104, Winona 85) 1964-5
189 (SCI 103, Wartburg 86) 1964-5
Field goals, game: 44 (vs NDSU) 1958-9
Field goals, season: 804 in 27 games, 1963-4
Free throws, game: 42 (vs Morningside), 1961-2
Free throws, season: 512 in 27 games, 1963-4
Rebounds, game: 83 (vs SDSU), 1959-60
Rebounds, season: 1,409 in 23 games, 1959-60
Biggest point margins: 64 (SCI 96, Grinnell 32) 1945-6
42 (Pepperdine 64, SCI 22), 1945-6
Highest average, season: 79.5 in 24 games, 1961-2
Consecutive wins: 14, 1962-3 and 1963-4 (10 in 1963-4)
Consecutive wins, season: 10 in 1963-4
Consecutive losses, season: 9 in 1957-8

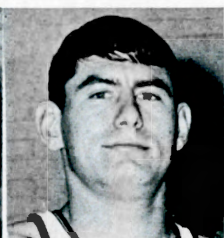
1965-66 North Central All-Conference Team

Phil Jackson, UND, 6-8, Jr. (MVP)
Craig Knepe, SCI, 6-5, Sr.
Paul Pederson, UND, 6-3, Sr.
Gerry Suman, NDSU, 6-6, Jr.
Tom Nesbitt, UND, 5-11, Sr.

Jack Theeler, USD, 6-4, So.
John Vermilyea, Morn., 6-2, Jr.
Tom Timpone, SDSU, 6-1, Jr.
Bob Maier, NDSU, 6-4, Jr.
John Eggers, Aug., 6-5, So.



Jerry Waugh



Ken Huelman



Daryl Jesse



Larry Lust

Basketball Sketches

Jerry Waugh, 6-3, forward, Junior, Redding, Ia., Letterman, Captain

Waugh is the closest thing to a returning starter SCI has this year. A transfer student, he became eligible at the semester last year and contributed heavily down the stretch, both in scoring and on the boards. A top hustler, he can do it all, score from the outside, from in close and he rebounds well for his height. Averaged just shy of 10 points a game in five outings last year. Led frosh with 18.3 average.

Ken Huelman, 6-7, center, Sophomore, Schaller, Ia.

Huelman is SCI's lone big man. He'll learn some lessons in early going, but the potential is there. For his size, he shoots very well and can muscle under the boards with anyone. Led the frosh in rebounding with 128 and an 11.6 average. Scored 159 points for 14.4 average. He can score from anywhere on court.

Larry Lust, 6-3, forward, Sophomore, Newton, Ia.

Lust was a guard on last year's freshman team and could end up there again. At start, though, he is counted on at forward to help in rebounding and scoring columns. A good leader and excellent floor man, Lust is transfer from Iowa. Played on two prep title teams. Averaged 6.2 for frosh as guard.

Daryl Jesse, 5-11, guard, Sophomore, Jesup, Ia.

One of the steady players on last year's frosh team, Jesse seems a cinch to nail down starting berth. A good outside shooter, he came on as freshman with improved defensive play and averaged 8.7 on offense. Like Lust, he is an excellent floor man.

Terry Payne, 6-0, guard, Junior, Moline, Ill.

Payne is a transfer student from Black Hawk Junior College who has been so impressive from the start he appears to be in line for the other starting guard role despite the return of two lettermen. An excellent outside shooter, he has speed and desire to drive against defense.

Larry Clausen, 5-10, guard, Sophomore, Cedar Rapids, Ia.

Awfully small, Clausen is a freshman whose hustle may thrust him into the picture at guard. He loves action and has the knack of speeding up the tempo. A good driver, he scored at a 4.6 clip as a reserve for the freshman team.

Pat Gabriel, 6-3, forward, Junior, Dubuque, Ia., Letterman

Gabriel is developing and could come on to free Lust for guard duty. He played little until midseason last year and finished with a 1.9 average in 11 games. Has the size to be a factor under the boards.

Marv DeWaard, 6-0, guard, Senior, Britt, Ia., Letterman

DeWaard is not a flashy performer, but he has been a solid reserve for two seasons. He is a good floor man when the pressure is on though he averaged only 0.8 points a game last year. An honor student.

Mark St. Clair, 6-2, guard, Clinton, Ia., Letterman

St. Clair will push either Jesse or Payne for a starting role. He developed fast last year in his floor play and has always been a good outside shooter. Averaged 1.7 last year in a reserve role.



Terry Payne



Larry Clausen



Marv DeWaard



Bill Van Zante

Lyle Schwarzenbach, 6-4, center, Senior, Lake Park, Ia., Letterman

Schwarzenbach lettered as a sophomore but lost out last year when he suffered a knee injury and underwent surgery. Averaged 4.6 as a sophomore reserve. The knee trouble has slowed him down, but he can move in and shoot with anyone from outside.

Bill Van Zante, 6-4, forward, Sophomore, Pella, Ia.

Van Zante has been having circulation troubles in one arm and could be lost, but when healthy he is a potent shooter. He averaged 9.8 as a frosh, but must improve floor play to push for starting role.

Dan Mallin, 6-2, forward, Junior, Cedar Falls, Ia.

Mallin came into early practice with a cast on his shooting hand. It put him behind in early drills, but he is a battler who can help in rebounding. A good team man.

Russ Barney, 6-0, guard, Junior, Waterloo, Ia.

Barney is in the picture at guard where improved floor play and scoring ability could make him a valuable man. Played little as a sophomore and did not score. He's one of the most aggressive men on the squad on defense.

Rick Wilson, 6-1, guard, Sophomore, Bloomfield, Ia.

Wilson could be a real sleeper on this year's squad. The potential is there and if it develops he can move into contention at guard. Averaged 4.6 as a frosh in a reserve role and came on strong at the end of the season.

Rich James, 6-3, forward, Sophomore, Cedar Falls, Ia.

James is a hustler, but must improve in several phases of his game to move up into contention. Averaged 3.6 on freshman squad.



Lyle Schwarzenbach



Mark St. Clair



Pat Gabriel



Russ Barney

All-Time Scoring Leaders

1,000-Point Club

Player	Yrs.	G	FG	FT	TP	Ave.
Pete Spoden (1960-4)	3	70	462	315	1239	17.7
Craig Knepe (1963-6)	3	70	444	312	1200	17.1
Norm Jespersen (1946-9)	4	78	412	275	1099	14.1
Jerry Holbrook (1959-62)	3	68	382	281	1045	15.4
Howie Pigg (1951-5)	3	67	379	283	1041	15.5
Dick Beetsch (1952-5)	4	86	374	281	1029	12.0

500-Point Club

Player	Yrs.	G	FG	FT	TP	Ave.
Ron Jessen (1962-5)	3	73	306	314	926	12.6
Duane Josephson (1961-4)	3	68	370	173	913	13.4
Jim Jackson (1957-60)	3	67	324	243	891	13.3
Walt Kochneff	3	63	301	209	811	12.9
Frank Stotts	3	60	274	190	738	12.3
Ron LaFrentz	3	69	299	125	723	10.5
Bob Waller	3	56	286	90	662	11.8
Van Combs	3	59	279	84	642	10.9
Del Nicklaus	3	61	234	136	604	9.9
Ray Nissen	2	40	207	176	590	14.9
Dean Jensen	3	68	228	128	584	8.6
Gene Nichols	3	68	220	139	579	8.5
Jerry McColley	2	50	189	183	561	11.2
Dennis Filliman	2	49	219	123	561	11.5
Al Carew	2	49	223	113	559	11.4
Dick Christy	3	68	195	123	513	7.5

Top Scoring Performances

Single Game

- 38 by Spoden (vs Morn) '64
- 37 by Pigg (vs Aug.) '55
- 36 by Josephson (vs UND) '64
- 35 by Pigg (vs UND) '55
- 35 by Stott (vs W'Burg) '57
- 35 by Pigg (vs Cornell) '54
- 34 by Jackson (vs Cornell) '59
- 32 by Knepe (3 times)
- 32 by Spoden (2 times)
- 32 Pigg, '54
- 32 Nichols, '56

Season

- 485, Spoden, '61-2
- 459, Knepe, '64-5
- 455, Pigg, '54-5
- 455, Josephson, '63-4
- 435, Greenfield, '52-3
- 421, Josephson, '62-3
- 399, Holbrook, '61-2
- 395, Knepe, '65-6
- 393, Jespersen, '48-9
- 359, Garth, '50-1
- 356, Pigg, '51-2

North Central Conference Records

Individual

Scoring

Game: 47 by Marv Bachmeier, NDSU, 1960
 Season: 338 by Bachmeier, NDSU, 1960
 Average: 28.2 by Bachmeier, NDSU, 1960

Field Goals

Game: 19 by Don Jogewaard, NDSU, 1960
 Season: 119 by Bachmeier, NDSU, 1960
 Percentage: .602 by Ron Jessen, SCI, 1964

Free Throws

Game: 22 by Bob Minick, Aug. vs Morn., 1955
 Season: 111 by Don Jacobsen, SDS, 1961
 Percentage: .962 by Paul Te Stroete, Morn., 1961

Rebounds

Game: 32 by Don Augustin, UND, 1955, and Jim Jackson, SCI, 1960
 Season: 221 by Jackson, SCI, 1960
 Average: 18.4 by Jackson, SCI, 1960

Team

Scoring

Game: 120 by SDS vs Aug., 1964
 Season: 1,062 by SDS, 1964
 Average: 88.5 by SDS, 1964

Field Goals

Game: 46 by SDS vs Aug., 1964
 Season: 430 by SDS, 1964
 Percentage: .484 by SCI, 1965

Free Throws

Game: 53 by SDS vs Aug., 1957
 Season: 339 by SDS, 1966
 Percentage: .746 by USD, 1966

Rebounds

Game: 87 by UND vs Morn., 1957
 Season: 771 by SCI, 1960
 Average: 64.3 by SCI, 1960

1965-66 North Central Conference Standing

Conference

	W	L	Pct.
North Dakota U.	11	1	.917
State College of Iowa	9	3	.750
North Dakota State	7	5	.583
South Dakota State	5	7	.417
South Dakota U.	5	7	.417
Morningside	4	8	.333
Augustana	1	11	.083

Overall

	W	L	Pct.
North Dakota U.	24	5	.827
State College of Iowa	13	7	.650
North Dakota State	14	10	.583
South Dakota State	13	11	.541
South Dakota U.	9	15	.375
Augustana	7	13	.350
Morningside	7	15	.318

SCI Record vs 1966-67 Opponents

Opponent	Series Began	Last Game	SCI Won	SCI Lost	Pct.
Augustana	1943	1966	38	9	.808
Bemidji State	1963	1963	1	0	1.000
Iowa State	1932	1966	3	8	.272
Mankato State	1947	1966	12	5	.706
Morningside	1920	1966	38	23	.622
North Dakota	1935	1966	25	23	.520
North Dakota State	1935	1966	33	15	.687
Northeast Missouri State	1939	1966	2	3	.400
South Dakota	1935	1966	24	23	.510
South Dakota State	1935	1966	25	28	.471
Southern Illinois	1965	1966	0	2	.000
Western Illinois	1939	1965	8	6	.571

1965-66 Team Statistics

Player	G	FG	FT	PF	Reb.	TP	Ave.	HG*
Craig Knepe	20	138	119	55	211	395	19.7	32
Phil Johnson	20	100	45	51	135	245	12.2	21
Gene Fuelling	20	73	46	41	56	192	9.6	19
Jim Videtich	20	72	42	48	68	186	9.3	19
Chuck Nolting	20	60	48	63	104	168	8.4	23
JERRY WAUGH	5	21	7	5	31	49	9.9	11
Harry Daniels	15	18	13	22	43	49	3.2	10
MARK ST. CLAIR	18	13	5	11	21	31	1.7	7
PAT GABRIEL	11	8	5	7	16	21	1.9	7
MARV DE WAARD	17	3	6	5	10	12	0.7	2
Dave Lister	4	1	2	0	3	4	1.0	3
LYLE SCHWARZENBACH	2	1	0	1	0	2	1.0	2
Tom Franklin	4	0	0	2	3	0	0.0	0
RUSS BARNEY	6	0	0	4	5	0	0.0	0
Team rebounds					156			
SCI Totals	20	508	338	315	862	1354	67.7	93
Opponent's Totals	20	517	263	402	950	1297	64.8	86

* Returnees in CAPS

Key: G-Games, FG-Field Goals, FT-Free Throws, PF-Personal Fouls,
Reb.-Rebounds, TP-Total Points, Ave.-Average per game, HG-High Game

SCI RECORD (13-7), 9-3 in NCC

62 Mankato State 56	62 *South Dakota U. 49
43 Southern Illinois 68	69 *Augustana 64
74 Northeast Missouri 70	56 *South Dakota State 75
54 Iowa State 73	88 *North Dakota State 74
68 *North Dakota State 74	69 *North Dakota U. 61
55 *North Dakota U. 86	80 *South Dakota State 67
29 †North Dakota U. 49	70 *South Dakota U. 57
78 †Morningside 54	78 *Morningside 62
56 †South Dakota State 67	86 *Augustana 75
84 Wartburg 60	93 *Morningside 56

* NCC games, † NCC Holiday Tournament Games

Former Little All-America Cagers

1963-64 Pete Spoden, 1st Team, AP

1965-66 Craig Knepe, 3rd Team, AP

All-Time Basketball Results

Year	Coach	W-L	TP	OP	Year	Coach	W-L	TP	OP
1900-01	0-3	1935-36	Dickinson	6-10	447	493
1901-02	1-2	1936-37	Dickinson	5-7	345	354
1902-03	Jones	0-2	1937-38	Nordly	9-5	481	436
1903-04	Pell	2-3	1938-39	Nordly	9-8	634	621
1904-05	Pell	3-3	1939-40	Nordly	11-7	630	622
1905-06	Pell	6-6	1940-41	Nordly	11-6	671	626
1906-07	Seymour	5-4	312	309	1941-42	Nordly	10-9	750	726
1907-08	Seymour	4-4	305	275	1942-43	Nordly	3-9	456	463
1908-09	Seymour	5-7	290	384	1945-46	Nordly	13-7	1008	869
1909-10	Simmons	4-3	155	167	1946-47	Nordly	6-14	888	937
1910-11	1947-48	**Nordly	14-6	1054	895
1911-12	Pasini	2-8	184	295	1948-49	**Nordly	16-6	1215	1059
1912-13	Pasini	6-4	1949-50	**Nordly	16-5	1340	1093
1913-14	Berkstresser	6-4	257	192	1950-51	**Nordly	14-9	1228	1162
1914-15	Berkstresser	4-8	266	310	1951-52	Nordly	14-10	1397	1349
1915-16	Berkstresser	1952-53	**Nordly	14-11	1656	1708
1916-17	Berkstresser	1953-54	Nordly	6-15	1330	1450
1917-18	Perrine	5-5	244	228	1954-55	Hall	11-11	1707	1654
1918-19	Glaesner	2-6	135	183	1955-56	Hall	8-11	1369	1467
1919-20	Doseff	7-9	346	375	1956-57	Witham	12-10	1491	1489
1920-21	Doseff	7-5	260	226	1957-58	Witham	9-14	1478	1492
1921-22	Mendenhall	9-2	254	193	1958-59	Witham	11-12	1655	1678
1922-23	Mendenhall	10-1	287	185	1959-60	Witham	15-8	1758	1605
1923-24	Mendenhall	8-4	242	199	1960-61	Witham	16-5	1636	1355
1924-25	Dickinson	10-1	301	208	1961-62	**Stewart	19-5	1908	1628
1925-26	Dickinson	10-3	349	273	1962-63	Stewart	15-8	1741	1631
1926-27	Dickinson	6-7	313	336	1963-64	**Stewart	23-4	2120	1838
1927-28	Dickinson	7-8	411	374	1964-65	Stewart	16-7	1744	1627
1928-29	Dickinson	12-4	463	377	1965-66	Stewart	13-7	1354	1297
1929-30	Dickinson	13-2	435	303	Record: Won-541, Lost-393				
1930-31	Dickinson	9-3	406	263	SCI Points, 43,473; Opp. Points, 40,998				
1931-32	Dickinson	10-6	482	448	** Conference titles				
1932-33	Fritzel	9-4	430	256	No basketball played in 1943-45 war years—Scores not available for these years.				
1933-34	Dickinson	9-5	376	362					
1934-35	Dickinson	5-11	479	553					

Basketball Coaching Records

Coach	Years Coached	Won	Lost	Pct.	CT
Mendenhall	1921-1924 (3)	27	7	.794	0
Dickinson	1924-1937 (12)	102	67	.603	0
Fritzel	1932-1933 (1)	9	4	.692	0
Nordly	1937-1954 (15)	166	127	.566	5
Hall	1954-1956 (2)	19	22	.463	0
Witham	1956-1961 (5)	63	49	.562	0
Stewart	1961- (5)	86	31	.735	2

SCI Gymnastics-Swimming

The outlook in both swimming and gymnastics is bleak to say the least.

It could be nothing else at this stage of the game as SCI initiates the two sports into its program.

Gymnastics is not really new. Some 50 years ago SCI did field a gymnastics team that competed once a year in the state meet. The sport floundered, for some reason, at that point, and has not been renewed until now.

Coach Garf Stych is starting cold. He has few athletes out who have ever had competitive experience in the sport.

The swimming outlook is the same. Coach Glen Henry, who started a similar program at Chadron State, Nebr., last year, is starting from scratch.

Both coaches have concentrated on underclassmen and will work hard with freshman recruits to build up future teams. Freshmen are not eligible to compete in varsity competition at SCI.

Pre-Season Gymnastics Roster

Gymnast	Yr.	Hometown
Darryl Banning	Jr.	Knoxville
Thomas Egan	So.	Sioux City
Thomas Griffin	Jr.	Morning Sun
Roger McBride	So.	Marion
Thomas Mickelson	So.	Dubuque
James Monahan	So.	Waverly
Thomas Moreland	Sr.	Rockwell City
Dennis Runyan	So.	Mt. Auburn
Richard Stein	So.	Davenport

1966-67 Gymnastics Schedule

Dec. 10	at Morningside Clinic
Jan. 7	at Mankato State
Jan. 14	at Illinois State
Feb. 4	Northwest Open at Minneapolis
Feb. 25	at Northern Illinois
Mar. 3	ST. CLOUD STATE

Pre-Season Swimming Roster

Swimmer	Yr.	Hometown
Michael Beutleg	So.	Des Moines
John Graves	So.	Sioux City
Rick Hankins	So.	Humboldt
Andrew Higgins	So.	Clarinda
James Johnson	Jr.	Algona
James Perkins	So.	Monticello
Robert Pike	So.	Grundy Center
Steve Stauffacher	So.	Cedar Rapids

1966-67 Swimming Schedule

Dec. 10	at Morningside Clinic
Jan. 7	at Mankato State
Jan. 14	at Illinois Wesleyan
Jan. 21	at Grinnell Relays Quadrangular (SCI, Wayne St., Luther)
Feb. 4	PLATTEVILLE STATE
Feb. 11	at Wayne State
Feb. 25	at Northern Illinois
Jan. 6	Hamline, here, 7:30 p.m.

1966-67 SCI Basketball Schedule

Dec. 1	IOWA STATE
Dec. 3	at Western Illinois
Dec. 5	at Southern Illinois
Dec. 10	BEMIDJI STATE
Dec. 12	at Mankato State
Dec. 17	NORTHEAST MISSOURI STATE
Dec. 19	WESTERN ILLINOIS
Dec. 28-9-30	NCC Holiday Tournament at Sioux Falls, S.D.
Jan. 6	at Morningside
Jan. 7	at South Dakota U.
Jan. 16	NORTH DAKOTA U.
Jan. 28	NORTH DAKOTA STATE
Feb. 1	MORNINGSIDE
Feb. 4	SOUTH DAKOTA U.
Feb. 10	at South Dakota State
Feb. 11	at Augustana
Feb. 18	AUGUSTANA
Feb. 24	at North Dakota U.
Feb. 25	at North Dakota State
Mar. 4	SOUTH DAKOTA STATE

Home Games: Varsity.....7:30 p.m.
Freshman.....5:30 p.m.
Home games in CAPS

PRESS INFORMATION

All home basketball games and wrestling matches are held at the Men's Gymnasium on the SCI campus. The gymnasium, seating 3,500, has its main press box on the south side with three radio booths located on the north side.

Requests for press tickets, and permission to broadcast should be directed to Dick Dietl, Sports Information Director.

Sports Information Director: Dick Dietl — Office Phone - 266-1721, Ext. 327
Home Phone - 266-8943.

Basketball Coach: Norm Stewart — Office Phone - 266-1721, Ext. 341 Home Phone - 266-6889.

Wrestling Coach: Chuck Patten — Office Phone - 266-1721, Ext. 341 Home Phone - 266-0573.

Area Code 319



CHUCK PATTEN

Chuck Patten starts his third year as head wrestling coach with an optimistic feeling. After a disastrous opening year when injuries riddled his team and caused a 2-8-1 record, Patten regrouped his forces in 1965-66 and produced the school's first winning season on the mats since 1961. A former wrestler and golfer at SCI, Patten prepped for Dave Natvig at Waterloo East. He graduated from SCI in 1961 and eventually succeeded his college coach, Bill Koll. Patten did his graduate work at the University of Oregon and had great coaching success in high school circles at Exeter, California and Reedsport, Oregon. He is married.



NORM STEWART

Norm Stewart begins his sixth season as head basketball coach at SCI with an impressive .735 winning percentage. His clubs have won 86 and lost 31 to date and finished fourth in the NCAA College Division tournament in 1963-64. He has not had a losing season yet, piling up records of 19-5, 15-8, 23-4, 16-7 and 13-7. Stewart was an All-America cage guard at the University of Missouri and graduated from there in 1956. He signed professional pacts with the St. Louis Hawks in basketball and St. Louis Cardinals in baseball, but gave up the pro sport to return to Missouri as freshman basketball coach prior to coming to SCI. He's married and has three children, two sons and a daughter.



JACK JENNETT

Jack Jennett begins his fourth year as head track coach at SCI. A former track and football star at Drake and a native of Sac City, Ia., Jennett got his coaching start at Lake City and went from there to Morningside and Buena Vista prior to replacing Art Dickinson at SCI. He's married and has three daughters.



GARF STYCH

Garf Stych, a former gymnastics star at Iowa, is in his first year at SCI. It is his task to produce a competitive gymnastics program for the Panthers. Stych, prior to his arrival here, was gymnastics coach at North High School in Eau Claire, Wisc. He is married and has two children.



GLEN HENRY

Glen Henry is also new on the SCI scene. As head swimming coach, Henry will also be initiating a new collegiate sport at SCI, following his duties as line coach in football. Henry is a graduate of Chadron State, Nebr., and came to SCI from that school where he started a swimming program. He's married and has two children.