

Spring 2003

## Geography Newsletter, Spring 2003

University of Northern Iowa. Department of Geography.

*Let us know how access to this document benefits you*

Copyright ©2003 Department of Geography, University of Northern Iowa

Follow this and additional works at: <https://scholarworks.uni.edu/geonews>



Part of the [Geography Commons](#), and the [Higher Education Commons](#)

---

### Recommended Citation

University of Northern Iowa. Department of Geography., "Geography Newsletter, Spring 2003" (2003).  
*Geography Newsletter*. 17.

<https://scholarworks.uni.edu/geonews/17>

This Newsletter is brought to you for free and open access by the Newsletters at UNI ScholarWorks. It has been accepted for inclusion in Geography Newsletter by an authorized administrator of UNI ScholarWorks. For more information, please contact [scholarworks@uni.edu](mailto:scholarworks@uni.edu).

**Offensive Materials Statement:** Materials located in UNI ScholarWorks come from a broad range of sources and time periods. Some of these materials may contain offensive stereotypes, ideas, visuals, or language.



# DEPARTMENT OF GEOGRAPHY NEWSLETTER

**Spring 2003**

**Issue No. 9**

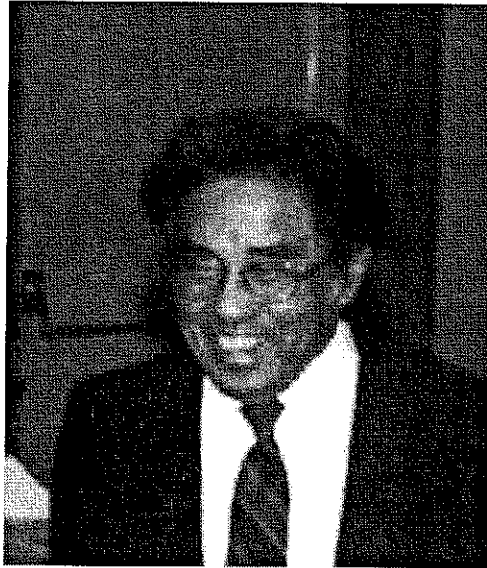
**Editor: Dr. Philip W. Suckling, Professor and Head**

**[Visit our departmental web page at: <http://fp.uni.edu/geography/>]**

## **CONTENTS**

In Memoriam: Roy Chung (April 6, 1929 - September 27, 2002).....	Page 2
Dr. C. Murray Austin Retires After 30 Years on the Geography Faculty..	Page 3
Dr. Tim R. Strauss Promoted to Associate Professor.....	Page 3
Department of Geography to Move into New Quarters in Fall 2005.....	Page 4
Geography Course Enrollments.....	Page 5
New Geographic Information Science Major Proposed for Fall 2004.....	Page 5
Alumni Album.....	Page 6
Geography Foundation Account.....	Page 8
Recent B.A. Geography Graduates.....	Page 8
Recent M.A. Geography Graduates.....	Page 8
Current Graduate Students.....	Page 9
Current Geography Faculty.....	Page 10
First Year at UNI for "Sugu".....	Page 11
Spring Awards Banquet: Friday, April 25, 2003.....	Page 11

## ***In Memoriam***



### ***Roy Chung*** ***(April 6, 1929 - September 27, 2002)***

Roy Chung, Associate Professor Emeritus of Geography, died on Friday, September 27, 2002 at Allen Hospital, Waterloo after a courageous battle with stomach cancer. He was 73 years old. Memorial services were held at the Dahl-Van Hove-Schoof Funeral Home in Cedar Falls on October 5. Attendees included family members, friends, colleagues and many former students from the various decades of Roy's professorial career.

Mr. Chung was born in Jamaica and moved to the United States to attend the University of Wisconsin-Madison in the early 1950s. Majoring in geography, he graduated with B.A. (1954) and M.A. (1956) degrees. He subsequently undertook doctoral studies at the same institution. In 1958, Roy joined the faculty of then Iowa State Teacher's College and was an original member of the Department of Geography when independent departments were created in 1969. Roy retired from the UNI faculty after 42 years of service in May 2000, having taught in portions of six different decades.

In addition to his academic pursuits, Roy loved to dance, sing and play the piano. He was well-known as a tireless and accomplished ballroom dancer. Roy met Beatrice Cruz at an International Club dance at the University of Wisconsin. They were married on October 8, 1960. Roy is survived by his wife, five children and 11 grandchildren. His youngest son James is a current UNI geography major.

After taking ill, Roy told his children that one nice thing about 'all this' was that he and Beatrice had been reminiscing and he concluded, "I have had a full life".

### **Dr. C. Murray Austin Retires After 30 Years on the Geography Faculty**

Professor C. Murray has announced his retirement from the Geography faculty after 30 years of service at UNI.



Dr. Austin completed his PhD at the University of Pennsylvania in 1971. He subsequently taught at the University of Kansas before joining the UNI faculty in August 1973. Murray was promoted to Full professor in 1987.

Murray played a major role in the growth of the Department over the past three decades. Among his numerous teaching duties, he taught the graduate core courses for our M.A. program for many years. He also was heavily involved with our internship and co-op programs for undergraduate majors. Well-known for his tireless service duties, Murray was presented with the College of Social and Behavioral Sciences Outstanding Service Award in 1995.

Dr. Austin and his wife Kitty have owned a summer home in Scotland for many years and will now split their time between their Scotland home and a new winter home in central Florida. Naturally, both

homes are located in close proximity to several golf courses!

The Department wishes Murray and Kitty many happy years ahead in their well-earned retirement.

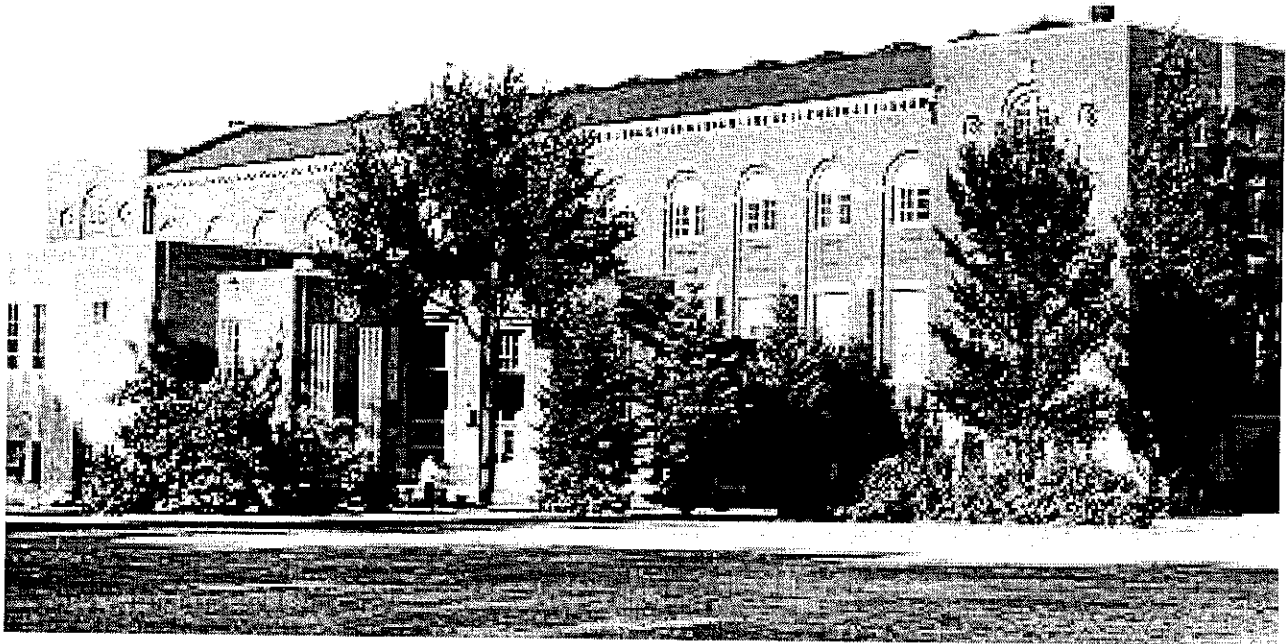
### **Dr. Tim R. Strauss Promoted to Associate Professor**

Recently, Provost Podolefsky approved the promotion of Dr. Tim R. Strauss to Associate Professor with tenure. Tim obtained his PhD degree in geography from the University of Washington in 1994. He subsequently held research positions with the state of Wisconsin Department of Transportation and the Center for Transportation Research and Education at Iowa State University. He joined the UNI Geography faculty in 1999.

Dr. Strauss is a transportation geography specialist, who currently serves as the education director for the UNI Division of the Midwest Transportation Consortium, which is a joint project involving UNI, Iowa State University and three Missouri institutions. Tim's teaching duties include introductory human geography, and advanced courses in GIS, transportation geography, and locational analysis for business.



Beginning this fall, Dr. Strauss will assume greater responsibilities within our M.A. program as instructor of the required core course "Nature of Geography and Its Research Methodology", as well as serving as the Department's new graduate co-ordinator.



### **Department of Geography to Move into New Quarters in Fall 2005**

The Department of Geography is among several campus units that are scheduled to move into the East Gym/Pool building, when a complete renovation is finished by Fall 2005. Funding of \$18.1 million was included for the project in last year's state budget. The renovated building is to be known as the Innovative Teaching and Technology Center (ITTC). Also moving into the building are Anthropology's laboratory and classroom facilities, the new Digital Technology program which will be a joint effort of the Departments of Computer Science and Industrial Technology, and the following service units: Educational Technology, Center for the Enhancement of Teaching, Academic Advising Services, the Computer Consulting Center, and the Center for Academic Achievement.

The Department of Geography will occupy the entire third floor of the old gym portion of the building. New laboratories will be substantially larger than current facilities. These will include a 24-seat cartography/physical geography teaching laboratory, a much larger soils sediment research laboratory facility, a 24-station computer laboratory for teaching GIS and other courses, a much larger geographic information sciences research laboratory primarily for graduate student use, and a new geoinformatics applications research facility. The Basheer K. Nijim Geography Resource Room currently within the Department will be replaced with a new lounge/resource facility for student use.

An increased number of faculty offices as well as a staff lounge and 16-seat seminar room complete the facilities planned for the building's third floor.

A 56-seat classroom with dual multi-media computer projection systems and other state-of-the-art teaching technology features will be located within the current pool area on the first floor of the renovated building. Geography will have priority scheduling for this classroom.

The Department's current facilities are spread throughout all four floors of Sabin Hall. Having all office and lab facilities on a single floor in the new building will represent a substantial improvement over our current spatial arrangement!

Over the summer, Geography faculty will be working closely with architects to design and fine-tune interior elements of the various rooms. Construction work will likely begin in late 2003 with completion and move-in targeted for August 2005.

Anyone interested in further details as this project unfolds is welcome to contact the Department Head. Contributions towards outfitting the new Basheer Nijim Room and other facilities will be most welcome.

### **Geography Course Enrollments**

Enrollment in Geography's non-liberal arts core (i.e. advanced) courses has set another record during the current 2002-03 academic year. Head-count enrollment of 567 is up from the previous year's record of 530. This compares to 367 as recently as 1996-97, and only 190 for 1990-91. During recent years, students from many majors have discovered the value of Geography's upper-level courses. More than half of students currently enrolled in our advanced courses are not geography majors.

Enrollment in Geography's introductory liberal arts core courses remains strong.

Over the last half dozen years, about 1700-2200 students have enrolled in our introductory World Geography, Human Geography and Physical Geography courses each year. By contrast, 1443 students took these courses in 1990-91.

### **New Geographic Information Science Major Proposed for Fall 2004**

The Department has proposed the establishment of a new Geography Major with Geographic Information Science (GISc) Emphasis, to be implemented in Fall 2004. The major will include core courses similar to our existing majors, but will incorporate several requirements and electives involving our expanded course offerings in GIS, remote sensing, GPS, cartography and related technologies.

In recognition of the growing interest in these technologies, the University administration has granted the Department a new faculty line in order to recruit an individual with expertise in GIS applications in human geography and the social sciences. This individual will join three current colleagues with primary teaching responsibilities in the proposed GISc major: Fred Fryman (cartography, aerial photo interpretation), Tim Strauss (GIS, transportation applications), and Ramanathan Sugumaran (GIS, remote sensing, GPS).

In the Fall, the Department will advertise the new GIS applications position, as well as a position in the area of urban geography (Murray Austin's replacement). Both new faculty members should be "on board" by August 2004. The Geography faculty will then consist of eleven full-time tenure/tenure-track professors. This compares to only eight faculty members a decade ago.

## Alumni Album

*For future issues of the Newsletter, please send your alumni news items to:*

*Sandra Heller, Secretary  
Department of Geography  
University of Northern Iowa  
Cedar Falls, IA 50614-0406.  
E-mail: [sandra.heller@uni.edu](mailto:sandra.heller@uni.edu) Fax: 319-273-7103*



*Mark Alexander* (M.A. 2000) is a GIS and Remote Sensing analyst with Geo Insight International in Colorado Springs, CO.

*Tim Beermann* (M.A. 2000) also works with Geo Insight International in Colorado Springs.

*Kevin Blansham* (B.A. 1979) works with the Iowa Northland Regional Council of Governments as a transportation and land use planner. Kevin lives in Waterloo and is also a recent UNI graduate of the Master in Public Policy (MPP) program.

*Jeff Brown* (M.A. 2001) lives in Olathe, Kansas working as a cartography technician with Garmin International Inc., a leading firm in GPS technology.

*Mike Carpenter* (B.A. 1999; M.A. 2002) is a law student at the University of Iowa.

*David Chester* (B.A. 1991) lives in Plainfield, Illinois where he works in the Will County GIS department.

*Micah (Dodson) Cutler* (B.A. 1996) lives in Harlan, Iowa where she is the GIS administrator for Harrison County.

*James Danielson* (B.A. 1999) taught middle school in Houston, Texas before moving to his current position at Osan American High School in Korea.

*Jeff Durscher* (B.A. 1983) lives in Herndon, Virginia and works as an imagery analyst for the National Imagery and Mapping Agency.

*Verner Duus* (B.A. 1966) currently lives in Upper Marlboro, Maryland. His career has included working with the federal government for many years involved with Indian Affairs.

*Brock Emmert* (B.A. 1996) lives in Alma, Kansas. Since completing his M.A. degree in geography at Kansas State University, Brock has been working as a watershed specialist for the state of Kansas.

*Jym Ganahl* (B.A. 1970) has been chief meteorologist for NBC News in Columbus, Ohio since 1979. He lives in the suburban community of Westerville.

*Eli Garms* (B.A. 2002) is working in the GIS/Mapping office of the utilities division of Osmose, Inc. He deals with GPS/GIS projects throughout the Midwest for the firm.

*Julie (Ahrens) Gosselink* (B.A. 1995) is president of a charitable foundation in Grinnell, Iowa that focuses on parks and recreation.

*Ezana Habte-Gabr* (M.A. 1995) teaches at Universidad La Sabana near Bogota, Colombia.

*Cory Hines* (B.A. 2002) works in the GIS Department of the Linn County Auditor's Office in Cedar Rapids.

*Tami Huegel* (B.A. 2001) is a teacher at Forest City High School. She commutes to Cedar Falls as a part-time student in our M.A. program.

*Andrew Hupp* (B.A. 1998) worked with the U.S. Census Bureau until moving to his current mapping position in 2000 at the Institute for Social Research at the University of Michigan.

*Jacob Ironside* (B.A. 2001) recently got married. He is currently working as a transportation planner and GIS technician at ECIA in Dubuque, Iowa.

*Tim Kirchoff* (B.A. 2000) has recently completed his M.A. thesis in geography at the University of Vermont. His thesis was titled "Study of Climatic Causes and Spatial Characteristics of Ice Jam Flooding".

*Karl Knutson* (B.A. 1968) is a middle school social studies teacher in Cedar Rapids. In 1998, he completed an M.A. degree in special education from the University of Iowa.

*John G. Lavender Jr.* (M.A. 1972) has been a market analyst with SuperValu for many years. John lives in Eden Prairie, Minnesota. He was the Department's Outstanding Alumnus Award recipient in 1998.

*Ben Limmer* (B.A. 2001) is a graduate student in urban planning at Cleveland State University. He is working as a graduate assistant for the Center for Economic Development.

*Eric Loecher* (B.A. 2000) is a senior GIS technician for ProMap Corporation in Ames, Iowa.

*Mary Meador* (B.A. 1997) received her M.S. in urban and regional planning from the University of Iowa in 1999 and is currently studying part-time for her MBA degree from the same institution. She

works as a research analyst for Allied Insurance in Des Moines.

*Craig McCoy* (B.A. 1972; M.A. 1975) was President of McCoy and Associates for many years. He lives in Des Moines where he is now an instructor at Hamilton College.

*Fred Payne* (M.A. 1998) is a lawyer with Kightlinger and Gray, LLP in Indianapolis.

*Marc Peterson* (M.A. 2002) works as a remote sensing specialist for the Science Center for Teaching, Outreach and Research on Meteorology (STORM). Funded by NOAA, STORM is housed in UNI's Department of Earth Science, with principal investigators from both the Earth Science and Geography Departments.



*James Quinn* (B.A. 2000) recently defended his M.A. thesis in our program and will graduate this spring. James works as a GIS specialist for the federal EPA in Duluth, Minnesota.

*Dave Richards* (B.A. 1988) lives in Prior Lake, Minnesota where he is a transportation surveyor for the Minnesota Department of Transportation.

*Ted Schmitz* (B.A. 2000) lives in Huntington Beach, California where he works as a GIS technician for Rand McNally Corp.

*Joshua Spaete* (B.A. 2001) worked with the Black Hills Council of Local Governments in Rapid City, South Dakota before entering the Master's program in

Community and Regional Planning last Fall at Iowa State University.

*Dale Splinter* (M.A. 2002) is a PhD student at Oklahoma State University.

*Karla Suckling* (B.A. 2000) lives in Minneapolis where she works at the Minnesota Museum of Science and REI Outfitters.

*Antony Thompson* (B.A. 1995) has been an engineer officer in the U.S. army. He is currently working on an M.A. degree in Training and Development at the University of Wisconsin-Stout.

*Daniel Tippie* (B.A. 1976) lives in Colorado Springs, Colorado. His career has included positions as a planner for Colorado Springs Utilities and as a design engineer for Griener Engineering.

*Dave Van Dee* (B.A. 1983) has been city administrator for Dyersville, Iowa since 2000. Previously, he worked for the City of Waterloo Planning Department.

*Tara Wedemeyer* (B.A. 1999) lives in Adair, Iowa where she is a recreation technician for the U.S. Forest Service.

### **Geography Foundation Account**

The Department of Geography has a discretionary account within the UNI Foundation to fund special field trips, external speakers, and the annual spring banquet. Individuals who wish to contribute to this account should mail their tax-deductible donation to:

UNI Foundation  
University of Northern Iowa  
Cedar Falls, IA 50614-0282

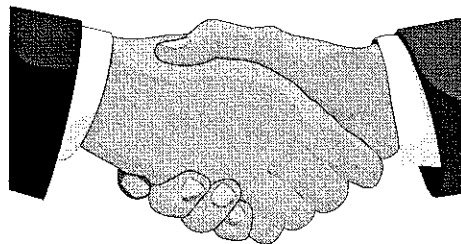
[Make checks payable to "UNI Foundation - Geography Discretionary Fund"]

### **Recent B.A. Geography Graduates**

Spring '02: *Brett Black*  
*Jess Elder*  
*James Pierce*  
*Crystal Schumacher*

Summer '02: *Maya Hirsch*  
*Philip Sorenson*

Fall '02: *Eli Garms*  
*Cory Hines*  
*Chris Stimmel*



### **Recent M.A. Geography Graduates**

*George Kuhter* (Spring '02): *Research Paper: "Factors Related to the Shifting Spatial Distribution of African Distance Runners in Olympic and World Championship Competition."*

*Marc Peterson* (Summer '02): *Thesis: "The Influence of Highway Development on Population and Land Cover" A Case Study of Nonmetropolitan Eastern Iowa Cities."*

*Dale Splinter* (Summer '02): *Thesis: "Quaternary Stratigraphy and Soil Geomorphology of the Lower Little Cedar River Valley, Northeast Iowa."*

*Michael Carpenter* (Fall '02): *Thesis: "Urban Traffic Externalities and Housing Value."*

## Current Graduate Students

*JacLyn (Jackie) Carlson* (B.S., Central Missouri State Univ, 2001) is in her second year working as a transportation scholar for her assistantship duties. Under the direction of Murray Austin and Tim Strauss, her thesis topic involves new urbanism in the Midwest.



*Micah Destival* (B.S., Northwest Missouri State Univ, 2002) entered our program last Fall. He is primarily interested in the technical tools of geography.

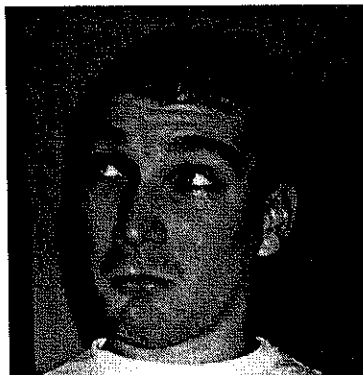
*Elisha (Jasper) Dung* (B.Sc., Univ of Jos, 1989; M.Sc., Univ of Jos, 1992) came here from Nigeria in Fall 2001. Jasper's thesis topic involves the use of remote sensing and its application to the study of land evaluation for corn production in Black Hawk county. Jasper's thesis advisor is Dr. Sugumaran.



*Jess Elder* (B.A., Univ of Northern Iowa, 2002) is in his first year as a graduate student. He is one of our transportation scholars working under the direction of Tim Strauss.



*James (Jimi) Gergevic* (B.S., Univ of Nebraska at Omaha, 2001) is also a transportation scholar, with Tim Strauss serving as his major advisor.



*James Harken* (B.A., Univ of Iowa, 1999) entered our program this January. He is working under the supervision of Sugu on a remote sensing project funded through NASA's Iowa Space Consortium.

*Tami Huegel* (B.A., Univ of Northern Iowa, 2001) is working part-time on her M.A. degree while teaching in Forest City. With interests in geographic education, her major advisor is Kay Weller.

*Greg Keller* (B.S., Iowa State Univ, 1996) is a first-year graduate student. He is currently teaching the physical geography labs. New to the discipline, his interests within geography are currently undefined.

*Steven Oaks* (B.A., Univ Northern Iowa, 1997) teaches full-time at Waterloo East High School. After taking graduate courses as a non-degree student, Steve officially entered our program as a part-time student this semester. His interests are within geographic education.

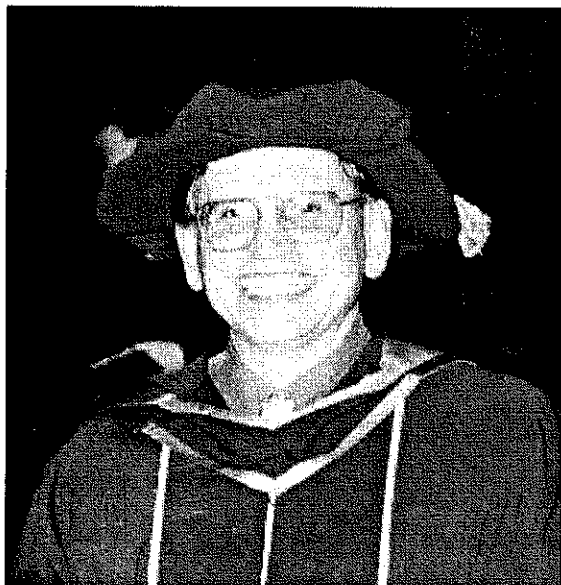
*Andrey Petrov* (B.A. Herzon State Pedagogical Univ, 2000) is in his second year of study at UNI. Andrey comes from St. Petersburg, Russia. His thesis topic involves a study of population dynamics in the resource-dependent peripheral territories of the Canadian North. Tim Strauss serves as his thesis advisor.

*Nanmi Tissing* (B.Sc., Univ of Jos) came to UNI from Nigeria in January 2002. Her interests involve economic development and GIS applications.

*Dave Van Eman* (B.A., Univ of Northern Iowa, 1999) is in his second year of our non-thesis program. His interests fall within human geography. Tom Fogarty is his advisor.

*Dan Walsh* (B.A., Univ of Northern Iowa, 1998) is a part-time student who is nearing completion of his program under the direction of Kay Weller. Dan is a full-time teacher in Cedar Rapids.

The following graduate students have completed their course work and are hopefully nearing completion of their theses: *Jan Emerson, Raymond Johnson, James Quinn, Drew Schaffer, Chris Simenson, Jenny Sink, Karla Suckling.*



*Photo of Department Head Dr. Phil Suckling dressed in formal academic attire for the Commencement ceremonies. His unusual attire is for PhD graduates of the University of British Columbia.*

### **Current Geography Faculty**

Dennis E. Dahms, Ph.D., Kansas, 1991. *Associate Professor.* Teaching areas: physical, environmental, soils, natural regions, Quaternary/Ice Age landforms.

Thomas M. Fogarty, Ph.D., Pennsylvania, 1978. *Professor.* Teaching areas: World, India, political, geopolitics, public policy.

James F. Fryman, Ph.D., North Carolina, 1981. *Associate Professor.* Teaching areas: World, maps, population, air photo interpretation, thematic cartography.

David W. May, Ph.D., Wisconsin-Madison, 1986. *Professor.* Teaching areas: physical, environmental change, rivers, senior seminar.

J. Henry Owusu, Ph.D., Iowa, 1993. *Assistant Professor.* Teaching areas: World, Africa, cultural, economic, African economic development.

Tim R. Strauss, Ph.D., Washington, 1994. *Associate Professor.* Teaching areas: human, transportation, location analysis, GIS, nature of geography and its research methodology.

Philip W. Suckling, Ph.D., British Columbia, 1977. *Professor and Head.* Teaching areas: World, climatology, natural hazards, Canadian studies.

Ramanathan Sugumaran, Ph.D., Edinburgh, 1999. *Assistant Professor.* Teaching areas: GIS, remote sensing, GPS, satellite image processing.

Kay E. Weller, Ph.D., Kansas State, 1993. *Associate Professor.* Teaching areas: World, historical, social studies teaching methods, geographic education.

[As indicated on page 5, the Department will be adding two new faculty members by Fall 2004, in the subfields of urban geography and GIS applications.]

### First Year at UNI for "Sugu"

Dr. Ramanathan Sugumaran ("Sugu") has had an excellent first year at UNI. This year, Sugu has been teaching our GIS I and GIS II courses as well



remote sensing of the environment. Next year, he will offer the global positioning systems (GPS) field survey methods course and he is developing a new advanced remote sensing course on satellite image processing.

During his first year at UNI, he has obtained funding for research grants from the Iowa Space Consortium (funded by NASA) and the Midwest Transportation Consortium. Collaborators on the latter grant include geographer Tim Strauss and Mohammed Salim of the Department of Industrial Technology. He has also been responsible for the remote sensing component of the STORM project, which is housed in UNI's Department of Earth Science. During this year, Sugu had an article published in the journal *Computers and Electronics in Agriculture* and presented several papers at professional

conferences. He was also elected to serve as a board member for the Iowa Geographic Information Council.

Sugu and his wife Vanitha have one young son. Vanitha will begin graduate studies within UNI's computer science M.S. program this Fall.

Congratulations to Sugu for a great start to his career at UNI!

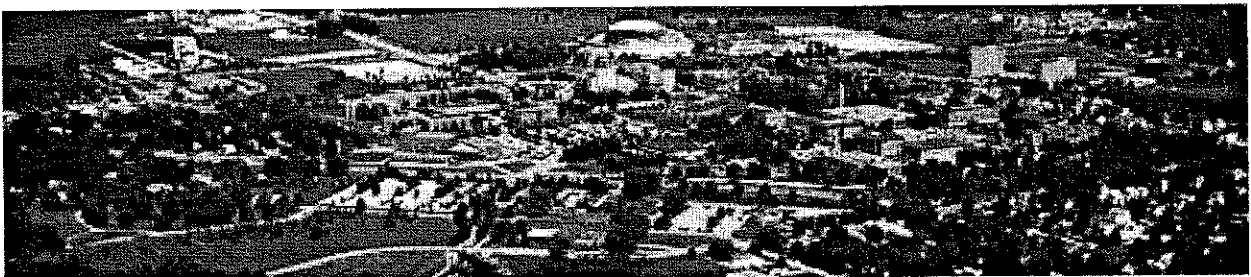
### Spring Awards Banquet: Friday, April 25, 2003

The 23rd Annual Geography Awards Banquet will be held during the evening of Friday, April 25, 2003 at the Olde Broom Factory Restaurant in Cedar Falls.

In addition to our traditional student honors, Walter D. Stephenson will be honored as the 2003 recipient of the *Geography Outstanding Alumnus Award*. Walt graduated from our B.A. program in 1980. He is now the General Manager of the Metropolitan Transit Authority of Black Hawk County, for whom he has worked since 1986. Walt and his wife Carolyn are long-term residents of Cedar Falls.

Students, faculty, staff and alumni are strongly encouraged to attend this gala event. For further information about the banquet, contact Sandra Heller in the department office at 319-273-2772 or send e-mail to:

[sandra.heller@uni.edu](mailto:sandra.heller@uni.edu)



**Department of Geography  
University of Northern Iowa  
Cedar Falls, IA 50614-0406**

Non-Profit Organization  
U.S. Postage  
**PAID**  
UNI