

2015

University of Northern Iowa Fact Book, 2015-2016

University of Northern Iowa

Let us know how access to this document benefits you

Copyright ©2015 University of Northern Iowa

Follow this and additional works at: https://scholarworks.uni.edu/ire_factbook



Part of the [Higher Education Commons](#)

Recommended Citation

University of Northern Iowa, "University of Northern Iowa Fact Book, 2015-2016" (2015). *University of Northern Iowa Fact Book*. 12.

https://scholarworks.uni.edu/ire_factbook/12

This Newsletter is brought to you for free and open access by the Institutional Effectiveness & Planning at UNI ScholarWorks. It has been accepted for inclusion in University of Northern Iowa Fact Book by an authorized administrator of UNI ScholarWorks. For more information, please contact scholarworks@uni.edu.

Offensive Materials Statement: Materials located in UNI ScholarWorks come from a broad range of sources and time periods. Some of these materials may contain offensive stereotypes, ideas, visuals, or language.

2015-2016 FACT BOOK

Institutional Research & Effectiveness

The University of Northern Iowa provides transformative learning experiences that inspire students to embrace challenge, engage in critical inquiry and creative thought, and contribute to society.



Quick Reference

University President	William N. Ruud	Residence Hall Occupancy	4,337
Board of Regents President	Bruce L. Rastetter	Number of Financial Aid Awards	39,296
University Accreditation	North Central Association of Colleges and Schools (NCA)	Fall 2015 Employees	
		Faculty and Institutional Officers	675
		Professional and Scientific	622
Number of Colleges	4	General Service Staff	564
		Total	1,861
Number of Academic Departments	32	2015 Current Funds Revenues	\$325,165,074
Enrollment 2015 (Fall Headcount)		2014 - 2015 Sponsored Funding Awarded	\$38,862,509
Undergraduate	10,169		
Graduate	1,812	Academic Year 2015 - 2016 Tuition and Fees	
Total	11,981	Undergraduate Resident	\$7,817
Enrollment 2015 (Fall FTE)		Graduate Resident	\$9,219
Undergraduate	9,151	Undergraduate Nonresident	\$18,005
Graduate	1,194	Graduate Nonresident	\$19,839
Total	10,345	Academic Year 2015 - 2016 Room and Board	\$8,320
2014 - 2015 Degrees Awarded		Electronic Journals Available in Library	63,618
Baccalaureate (Bachelor's)	2,303		
Master's	446	Location	Cedar Falls, IA
Specialist	5	Homepage Address	http://www.uni.edu
Doctorate	14	Office of Enrollment Services Phone Number	800-772-2037
Total	2,768		
Total Living Alumni	112,926		
Student Financial Aid	\$112,525,868	For an electronic version of the fact book, visit our web site at:	http://www.uni.edu/ir/uni-facts



FACT BOOK 2015-2016

University of Northern Iowa
Institutional Research & Effectiveness

Cedar Falls, IA 50614-0005
319-273-3050 | oire@uni.edu

Student Contributors:
Laura Formanek
Megan Vogt

Graphic and Publication Support: Office of University Relations

Table of Contents

Quick Reference.....	Inside front cover
Mission Statement.....	1
UNI Organizational Chart.....	2
UNI Administration.....	3
Definitions of Terms Used.....	4
Calendar.....	6

New Students

Fall New Students.....	7
New Student Applications, Admissions and Enrolled.....	8
New Students Enrolled by Residence.....	9
New Freshmen Enrollment by Residence.....	10
New Undergraduate Transfer Students by Type of Transfer College.....	11
New Freshmen ACT Composite Scores and High School Class Rank.....	12

Enrollment

Fall Students Profile by College.....	13
Headcount Enrollment.....	14
Headcount Enrollment by Level.....	15
Undergraduate Enrollment by Age.....	16
Undergraduate Headcount by College Fall.....	17
Fall Enrollment by Residence.....	18
Enrollment by Residence.....	19
Fall Enrollment by Race/Ethnicity.....	20
Minority Student Enrollment.....	21

Enrollment (continued)

Fall On-Campus Headcount and FTE Enrollment by Level.....	22
First Major Only by College and Level Fall.....	23
Annual Degrees Awarded by Level.....	24
Degrees Granted by College.....	25
Undergraduate Retention and Graduation Rates.....	26
Continuing Education Credit Enrollment Trends.....	27
Continuing Education Courses Offered.....	28
Web-Based Learning Management System (LMS).....	29
Fall Semester Residence Hall Occupancy by Gender and Level.....	30

Alumni

Total Living Alumni by College.....	31
Total Living Alumni by College.....	32
Alumni by State.....	33
Alumni by Iowa County.....	34
Post-Graduation Status of Bachelors Degree Recipients.....	35
Post-Graduation Status of Graduate Degree Recipients.....	36
Undergraduate Plans for Further Education.....	37
Graduate Plans for Further Education.....	38

Continued on next page

Table of Contents (continued)

Faculty and Staff

UNI Workforce by Employment Categories.....	39
UNI Workforce Headcount and FTE by Employment Categories.....	40
UNI Workforce by Race/Ethnicity.....	41
UNI Workforce by Employment Categories and Race/Ethnicity.....	42
UNI Workforce Headcount and FTE by Employment Categories and College.....	43

Budget and Finance

Statement of Revenues, Expenses and Changes In Net Assets.....	44
Financial Aid Programs by Source of Aid.....	46
Student Financial Aid Programs.....	47
Full-Time Undergraduate Student Tuition and Fees.....	48
Full-Time Graduate Student Tuition and Fees.....	49
Sponsored Project Proposals and Awards.....	50

Library

Library Statistics.....	51
-------------------------	----

General Information

International Students by Country.....	53
International Students by College.....	54
Top 5 Countries of Origin for International Students.....	55
Study Abroad Destinations.....	56
UNI Study Abroad Students by College and Classification.....	57
UNI Study Abroad Students by Term.....	58
UNI Study Abroad Top Ten Countries.....	59
Incoming International Exchange Students by Country.....	60
UNI Students Studying Abroad by Region.....	61
Top 5 Countries for UNI Study Abroad Students.....	62
UNI Services to Businesses, Communities and Local Government.....	63
UNI Carnegie Classification.....	64
Iowa Economic Impact Profile.....	65

Peer Institutions

Undergraduate Enrollment and Costs.....	66
Faculty by Rank.....	67
Faculty Average Salaries by Rank.....	68
Undergraduates Receiving Student Financial Aid.....	69
Retention Rates.....	70
Degrees Granted in Academic Year.....	71

Campus Map.....	Inside back cover
-----------------	-------------------

Mission Statement

INSTITUTIONAL MISSION

The University of Northern Iowa provides transformative learning experiences that inspire students to embrace challenge, engage in critical inquiry and creative thought and contribute to society.

VISION STATEMENT

The University of Northern Iowa will be nationally known for innovative education, preparing students for success in a rapidly changing, globally competitive, and culturally diverse world.

VALUES

As a university community we are guided by the following core values:

Academic Freedom – freedom of inquiry by students, faculty and staff

Access – an affordable, inclusive educational environment

VALUES (continued)

Accountability – integrity, responsibility and the highest ethical standards of students, faculty and staff

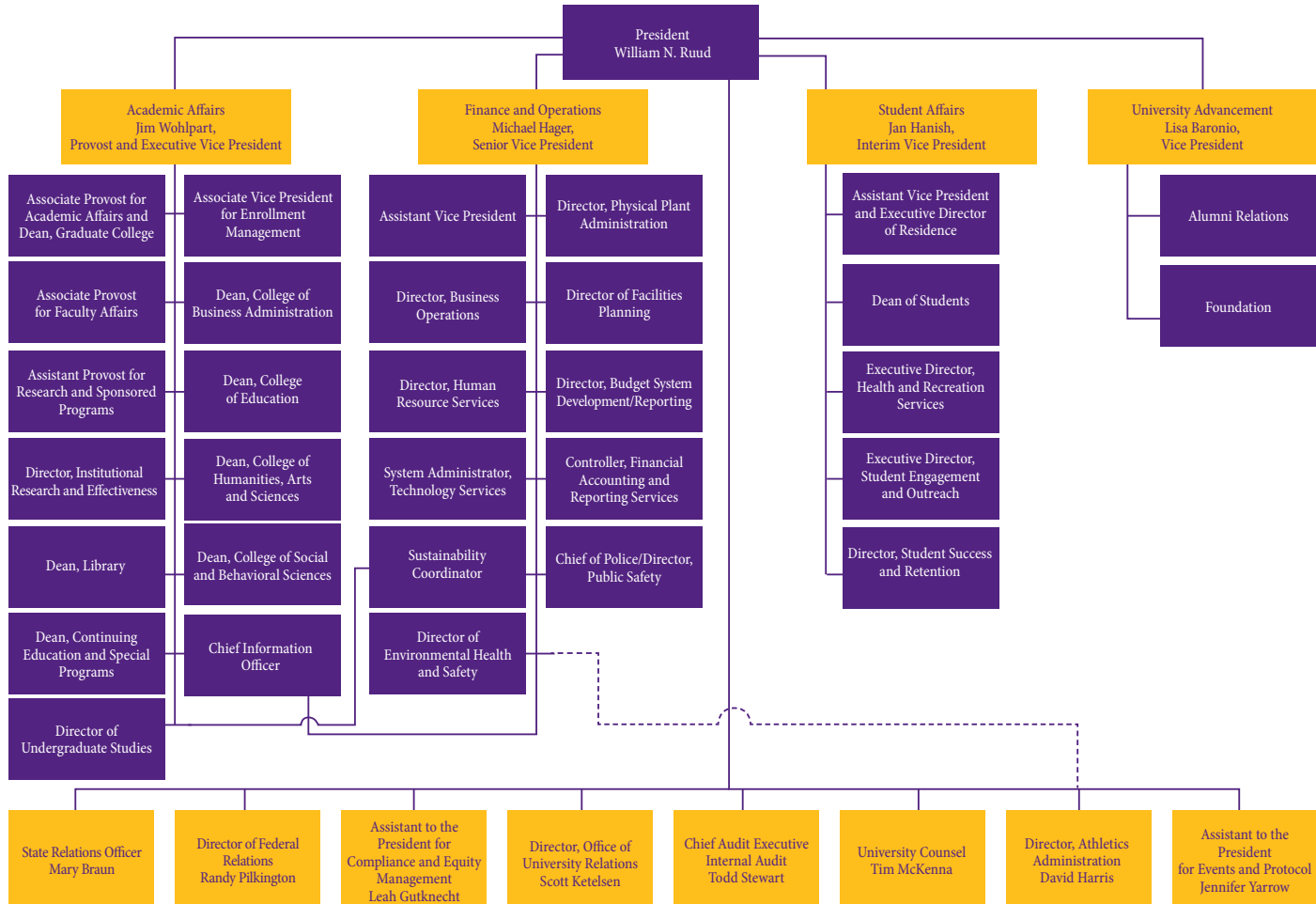
Community – an ethical, caring, and safe community characterized by civility

Diversity – a welcoming community that celebrates pluralism, multiculturalism, and the unique contributions of each person and group

Engagement – characterized by challenge, transformation, and lifelong learning in a global society

Excellence – in teaching and learning, scholarship and creative work, and service

Sustainability – an attractive, well-maintained campus environment that enhances the living and learning experience with an emphasis on environmental stewardship



UNI Administration

PRESIDENT..... William N. Ruud

EXECUTIVE VICE PRESIDENT and PROVOST..... James Wohlpart

SENIOR VICE PRESIDENT for FINANCE and OPERATIONS..... Michael Hager

VICE PRESIDENTS

Vice President for Student Affairs (Interim)..... Janice Hanish

Vice President for University Advancement and President of the UNI Foundation..... Lisa Birley Baronio

DIRECTOR OF FEDERAL RELATIONS..... Randy Pilkington

CHIEF INFORMATION OFFICER Marty Mark

DIRECTOR OF UNIVERSITY RELATIONS..... Scott Ketelsen

ASSOCIATE VICE PRESIDENT FOR ENROLLMENT MANAGEMENT..... Matthew Kroeger

ASSOCIATE and ASSISTANT PROVOSTS

Associate Provost for Academic Affairs..... Kavita Dhanwada

Associate Provost for Faculty Affairs..... Nancy Hill Cobb

DEANS

College of Business Administration..... Leslie Wilson

College of Education (Interim)..... Victoria Robinson

College of Humanities, Arts and Sciences..... John Fritch

College of Social and Behavioral Sciences..... Brenda Bass

Continuing Education and Special Programs..... Kent Johnson

Graduate College..... Kavita Dhanwada

Library..... Christopher Cox

Definitions of Terms Used

ENROLLMENTS

Headcount: The count of each student enrolled for one or more courses taken in a semester following the second week of the semester's start.

Full-Time Student: An undergraduate student enrolled for 12 or more credit hours per semester and a graduate student enrolled for 9 or more credit hours per semester.

FTE (Full-Time Equivalent): An enrollment unit used to represent a student enrolled for a full course of study. It is calculated by dividing total credit hours generated by 15.0 for undergraduate students and by 9 for graduate students for a semester FTE.

Unclassified/Undeclared Student: A student who has enrolled in instructional courses but has not been officially accepted into one of the institution's authorized degree programs.

Freshman: A first-year undergraduate student.

First-Time First-Year Student: A student attending any institution for the first-time at the undergraduate level. Includes students enrolled in the Fall term who attended college for the first time in the prior summer term. Also includes students who entered with advanced standing (college credits earned before graduation from high school).

First-Time Student: A student attending any institution for the first time at the level enrolled. Includes students enrolled in the Fall term who attended a postsecondary institution for the first time at the same level in the prior Summer term. Also includes students who entered with advanced standing (college credit earned before graduation from high school).

Graduation Rate: Rate required for disclosure and/or reporting purposes under Student Right-to-Know. Calculated as the total number of completers within 150 percent of normal time divided by the revised cohort minus any allowable exclusions.

FACULTY AND STAFF

Faculty (Instruction/Research/Public Service): Persons whose specific assignments customarily are made for the purpose of conducting instruction, research, or public service as a principle activity (or activities), and who hold academic rank titles of professor, associate professor, assistant professor, instructor, lecturer or the equivalent of any of these academic ranks. This category excludes president, vice presidents, and deans. Also excluded are faculty on leave without pay.

Executive, Administrative and Managerial: Persons whose assignments require primary (and major) responsibility for management of the institution, or a customarily recognized department or subdivision, thereof. Assignments require the performance of work directly related to management policies or general business operations of the institution, department or subdivision. It is assumed that assignments in this category customarily and regularly require the incumbent to exercise discretion and independent judgment and to direct the work of others. Included in this category are all officers holding titles such as president, vice president, dean, director or the equivalent, as well as officers subordinated to any of these administrators with such titles as associate dean, assistant dean, executive officer of academic departments (department heads or the equivalent) if their principal activity is administrative.

Continued on next page

Definitions of Terms Used (continued)

BUDGET AND FINANCE

Current Funds Expenditures (and Transfers): The costs incurred for goods and services used in the conduct of the institution's operations. Includes the acquisition cost of capital assets, such as equipment and library books, to the extent current funds are budgeted for and used by operating departments for such purposes.

Current Funds Revenues: Unrestricted gifts, grants and other resources earned during the reporting period and restricted resources to the extent that such funds were expended for current operating purposes. Excludes restricted current funds received, but not expended because these revenues have not been earned.

Academic Support (Expenditures) for Public Institutions:

Expenditures for the support services that are an integral part of the public institution's primary mission of instruction, research or public service. Includes expenditures for libraries, museums, galleries, audiovisual services, academic computing support, ancillary support, academic administration, personnel development and course and curriculum development. Academic support expenditures for public institutions are measured differently than academic support expenses for private institutions because private institutions' academic support expenses include depreciation costs and interest costs in amounts associated with this function. In addition, private institutions exclude amounts of capital expenditures associated with the academic support function. Finally, operations and maintenance expenses associated with the academic support function are included in the amounts reported by private institutions but are reported separately by public institutions.

Auxiliary Enterprises (Expenditures) for Public Institutions:

Expenditures for essentially self-supporting operations of the institution that exist to furnish a service to students, faculty or staff, and that charge a fee that is directly related to, although not necessarily equal to, the cost of the service. Includes mandatory and nonmandatory transfers. Examples are residence halls, food services, student health services, athletics, UNI-Dome and performing arts center. Auxiliary enterprise expenditures are measured differently for public and private institutions. Public institutions include capital expenditure amounts associated with auxiliary enterprise expenditures, but do not include depreciation, interest and operations and maintenance expenses. These amounts are included in private institutions' expenses of auxiliary enterprises.

OTHER

IPEDS: The Integrated Postsecondary Education Data System conducted by National Center for Education Statistics (NCES). IPEDS began in 1986 and involves annual data collections. Survey data are required from all postsecondary institutions that have a Program Participation Agreement (PPA) with the Office of Postsecondary Education, U.S. Department of Education. IPEDS also requests limited data from approximately 3,000 other schools offering postsecondary education programs.

NCA: North Central Association of Colleges and Schools

CALENDAR

Semester/Date

Fall 2015

Monday, August 24
Monday, September 7
Friday, October 16
Monday, October 19
Monday - Friday, November 23 - 27
Thursday - Friday, November 26 - 27
Monday - Friday, December 14 - 18
Saturday, December 29
Thursday - Friday, December 24 - 25

Spring 2016

Friday, January 1
Monday, January 11
Monday, January 18
Friday, March 4
Monday, March 7
Monday - Friday, March 14 - 18
Monday - Friday, May 2 - 6
Saturday, May 7

Summer 2016

Monday, May 9
Monday, May 9
Monday, May 30
Friday, June 3
Monday, June 6
Monday, June 6
Friday, June 17
Monday, June 20
Friday, July 1
Monday, July 4
Tuesday, July 5
Friday, July 29

Event

Semester begins
University holiday
First half ends
Second half begins
Thanksgiving break
University holiday
Final exam week
Commencement
University holiday

University holiday
Semester begins
University holiday
First half ends
Second half begins
Spring break
Final exam week
Commencement

First 4 week session begins
First 6 week session begins
University holiday
First 4 week session ends
Second 4 week session begins
8 week session begins
First 6 week session ends
Second 6 week session begins
Second 4 week session ends
University holiday
Third 4 week session begins
All sessions end

Semester/Date

Fall 2016

Monday, August 22
Monday, September 5
Friday, October 14
Monday, October 17
Monday - Friday, November 21 - 25
Thursday - Friday, November 24 - 25
Monday - Friday, December 12 - 16
Saturday, December 17
Monday - Tuesday, December 25 - 26

Spring 2017

Monday, January 2
Monday, January 9
Monday, January 16
Friday, March 3
Monday, March 6
Monday - Friday, March 13 - 17
Monday - Friday, May 1 - 5
Saturday, May 7

Summer 2017

Monday, May 8
Monday, May 8
Monday, May 29
Friday, June 2
Monday, June 5
Monday, June 5
Friday, June 16
Monday, June 19
Friday, June 30
Tuesday, July 4
Monday, July 3
Friday, July 28

A person is seen from the back, wearing a purple t-shirt. The t-shirt has the words "PANTHER PRIDE" printed in large, bold, yellow capital letters. The person is sitting on a wooden bench. In the background, there are some purple and yellow signs or posters on the wall.

**PANTHER
PRIDE**

New Students

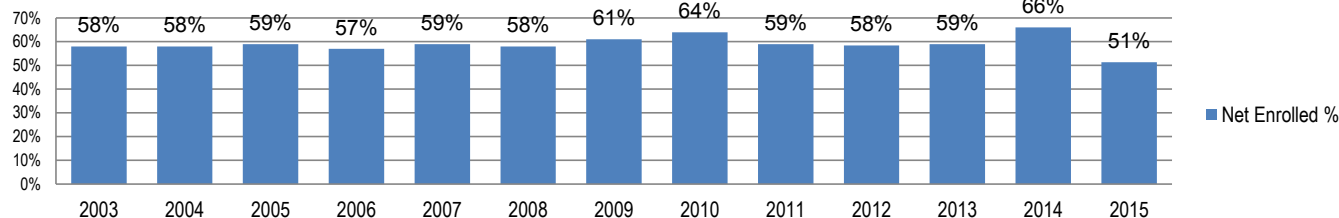


New Students

Fall 2015 New Students*

	Applications		Admissions		**Net Enrolled		Resident		NET ENROLLED Non-Resident		International	
	N	%	N	%	N	%	N	%	N	%	N	%
TOTAL	8,472		6,420		3,484		3,114		262		108	
Percent				75.8		41.1		89.4		7.5		3.1
Undergraduate												
New Freshmen	5,304	74.2	4,278	75.9	1,916	66.2	1,751	66.3	131	72.4	34	47.2
Transfers	1,841	25.8	1,361	24.1	979	33.8	891	33.7	50	27.6	38	52.8
Total	7,145		5,639		2,895		2,642		181		72	
Percent				78.9		51.3		91.3		6.3		2.5
Graduate												
Students	1,327		781		589		472		81		36	
Percent				58.9		75.4		80.1		13.8		6.1

Net Enrolled % of Admitted

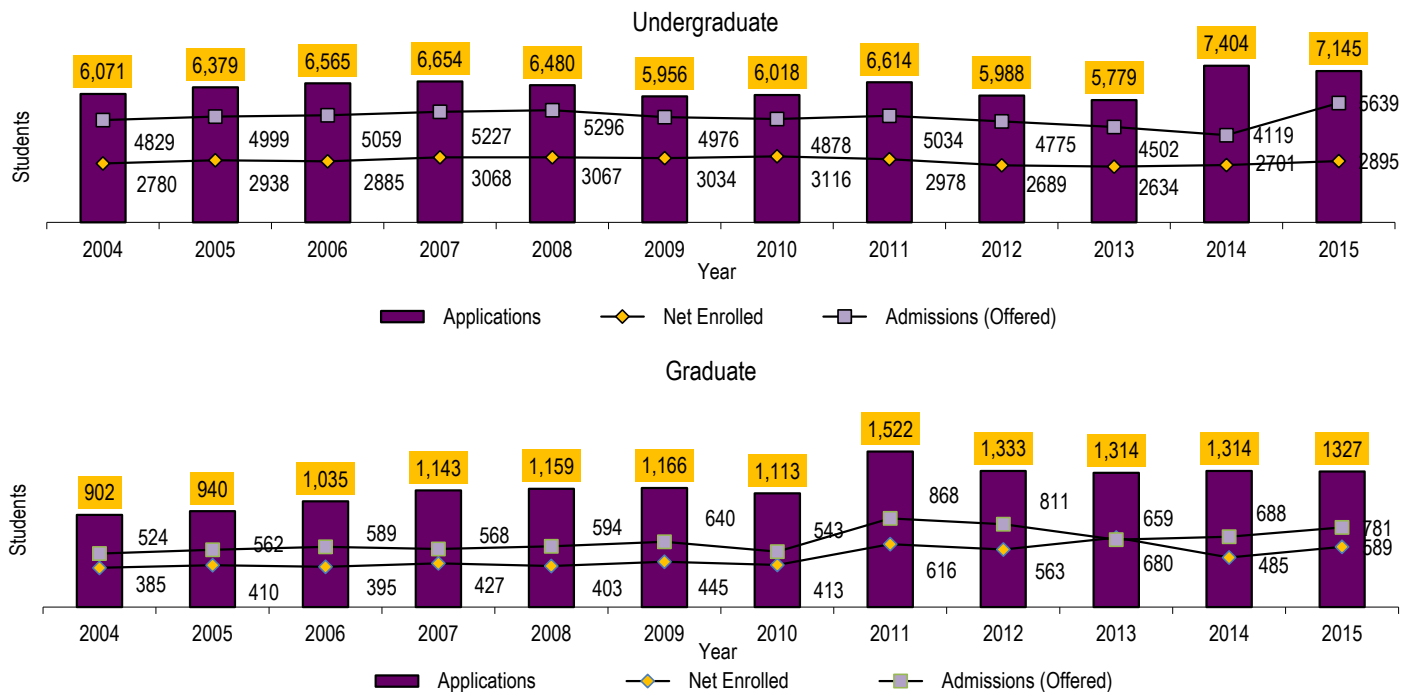


Source: Institutional Research & Effectiveness

*The undergraduate data does not reflect unclassified new students.

**Enrolled as % of applied

New Student Applications, Admissions and Enrolled Fall Semester 2004 - 2015



Source: Institutional Research & Effectiveness

New Students Enrolled by Residence 2005 - 2015

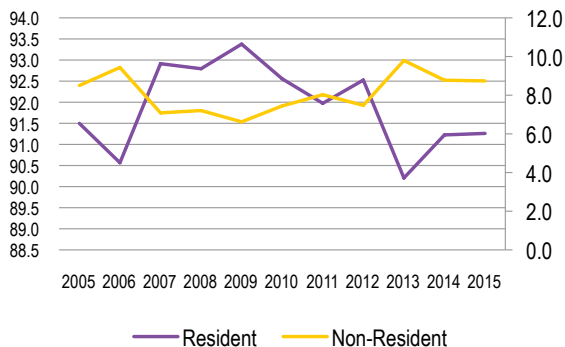
UNDERGRADUATE*

	Resident	Non-Resident	International Student
2005	2,766	149	108
2006	2,688	152	128
2007	2,937	191	33
2008	2,846	178	43
2009	2,834	146	55
2010	2,884	158	74
2011	2,739	177	62
2012	2,488	156	45
2013	2,376	182	76
2014	2,464	159	78
2015	2,642	181	72

GRADUATE

	Resident	Non-Resident	International Student	Total	Annual Percent Change
2005	303	43	64	3,433	5.2
2006	299	44	43	3,354	-2.3
2007	325	33	69	3,588	7.0
2008	299	51	53	3,470	-3.3
2009	354	50	41	3,480	0.3
2010	308	55	50	3,529	1.4
2011	458	121	37	3,594	1.8
2012	440	81	42	3,252	-9.5
2013	551	101	28	3,314	1.9
2014	376	81	28	3,186	-3.9
2015	472	81	36	3,484	9.4

Undergraduate New Student %



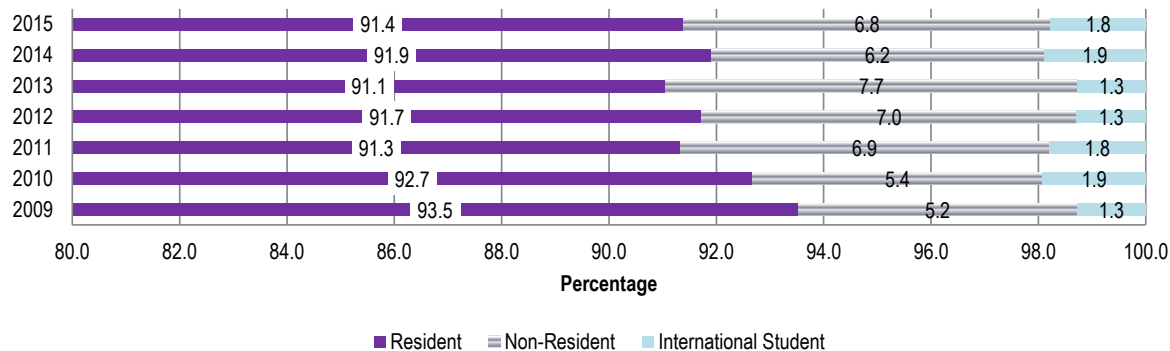
Graduate New Student %



New Freshmen Enrollment by Residence 2009 - 2015

	2009		2010		2011		2012		2013		2014		2015	
	N	%	N	%	N	%	N	%	N	%	N	%	N	%
New Freshmen	1,946		1,978		1,937		1,704		1,722		1,797		1,916	
Annual Percent Change		-3.4		1.6		-2.1		-12.0		1.1		4.4		6.6
Resident	1,820	93.5	1,833	92.7	1,769	91.3	1,563	91.7	1,568	91.1	1,651	91.9	1,751	91.4
Non-Resident	101	5.2	107	5.4	133	6.9	119	7.0	132	7.7	112	6.2	131	6.8
International Student	25	1.3	38	1.9	35	1.8	22	1.3	22	1.3	34	1.9	34	1.8

New Freshmen Enrollment by Residence

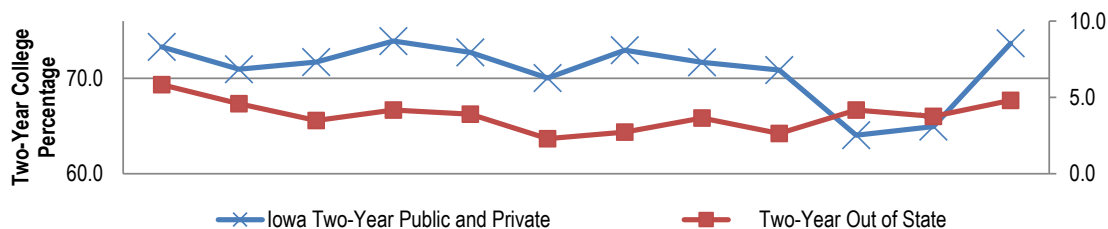


Source: Office of the Registrar

New Undergraduate Transfer Students by Type of Transfer College

	2005	2006	2007	2008	2009	2010	2011	2012	2013	2014	2015
TOTAL	1,201	1,117	1,077	1,052	1,088	1,138	1,041	985	912	904	979
Annual Percent Change	11.2	-7.0	-3.6	-2.3	3.4	4.6	-8.5	-5.4	-7.4	-0.9	8.3
Iowa Two-Year Public and Private	852	801	796	765	762	830	746	698	584	587	666
Iowa Area Community Colleges	835	798	789	757	762	828	746	698	584	587	665
Iowa Two-Year Private	17	3	7	8	0	2	0	0	0	0	1
Iowa Four-Year Public and Private	203	197	165	171	186	183	174	181	178	180	167
Iowa Four-Year Public											
Iowa State University	35	26	30	23	32	32	32	21	25	32	30
University of Iowa	41	57	48	46	42	51	51	35	30	32	22
University of Northern Iowa*								25	40	32	29
Subtotal	76	83	78	69	74	83	83	81	95	96	81
Iowa Four-Year Private	127	114	87	102	112	100	91	100	83	84	86
Non-Iowa (US) Total	146	119	116	116	140	125	121	106	150	137	146
Two-Year Out of State	55	39	45	41	25	31	38	26	38	34	47
Four-Year Out of State	91	80	71	75	115	94	83	80	112	103	99

Two-Year New Undergraduate Transfer Students



Source: *Institutional Research & Effectiveness*

*Students transferring from UNI are returning UNI students pursuing a second BA or teacher license

New Freshmen ACT Composite Scores and High School Class Rank

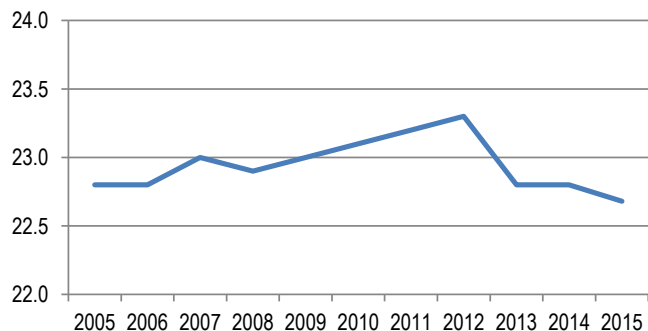
ACT Composite Scores

	Mean	75 th Percentile	25 th Percentile
2005	22.8	25.1	20.0
2006	22.8	25.8	21.0
2007	23.0	25.7	20.9
2008	22.9	25.7	20.9
2009	23.0	25.9	21.1
2010	23.1	25.0	21.1
2011	23.2	25.0	21.0
2012	23.3	25.0	21.0
2013	22.8	24.0	20.0
2014	22.8	25.0	20.0
2015	22.7	25.0	20.0

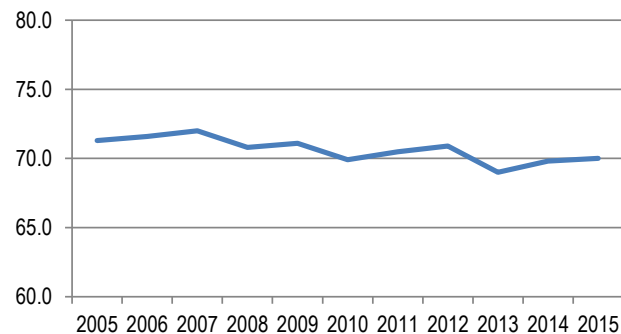
High School Rank

	Mean	Upper 10%	Upper 20%	Upper 50%
2005	71.3	19.0	39.1	89.5
2006	71.6	18.2	37.6	88.7
2007	72.0	19.0	38.9	88.5
2008	70.8	18.6	37.6	85.3
2009	71.1	18.9	40.1	85.3
2010	69.9	17.6	36.2	84.0
2011	70.5	19.1	37.2	84.1
2012	70.9	20.0	38.9	84.6
2013	69.0	18.1	37.1	81.6
2014	69.8	17.0	35.9	83.1
2015	70.0	18.0	39.3	83.7

ACT Mean Composite Score



High School Mean Rank



Source: Institutional Research & Effectiveness



Enrollment

A high-angle photograph of a collaborative workspace. Five individuals are seated around a light green circular table. The participants include a man in a light purple button-down shirt, a man in a black hoodie with 'PANTHERS' printed on it, a man in a black t-shirt, a woman in a red shirt, and a person in a purple shirt. They are all focused on their laptops. The table is cluttered with various items: multiple laptops (some silver, some black), a black mouse, a black power strip, a black water bottle, a blue water bottle, and a black case containing several pens. The room has a grey and black patterned carpet and white chairs.

Enrollment

**University of
Northern Iowa**

Central Campus
Eaton-Pedern PAC

Gilchrist Hall

Greenhouse



Fall 2015 Students Profile by College

	Total University	Business	Education	Humanities, Arts & Sciences	S&B Sciences	No Specific College
TOTAL	11,981	2,047	2,845	3,830	1,880	1,379
Percent	100	17	24	32	16	12
Full-Time	9,689	1,815	2,283	3,258	1,628	705
Part-Time	2,292	232	562	572	252	674
Female	7,073	778	2,112	2,074	1,186	923
Male	4,908	1,269	733	1,756	694	456
Freshman	2,174	392	403	680	319	400
Sophomore	1,933	393	402	667	305	166
Junior	2,492	557	564	835	472	64
Senior	3,335	632	891	1,145	543	114
Unclassified	235					235
Graduate	1,812	73	585	503	231	420
International Students:						
Undergraduate	481	193	19	146	32	91
Graduate	135	30	43	38	11	13
1st Majors:						
Undergraduate	10,169	1,974	2,260	3,327	1,649	959
Graduate	1,812	73	585	503	231	420
2014-2015 Degrees Granted:						
Baccalaureate (Bachelor's)	2,303	435	444	852	496	76
Master's	446	61	165	120	100	
Specialists	5		5			
Doctorates	14		12	2		

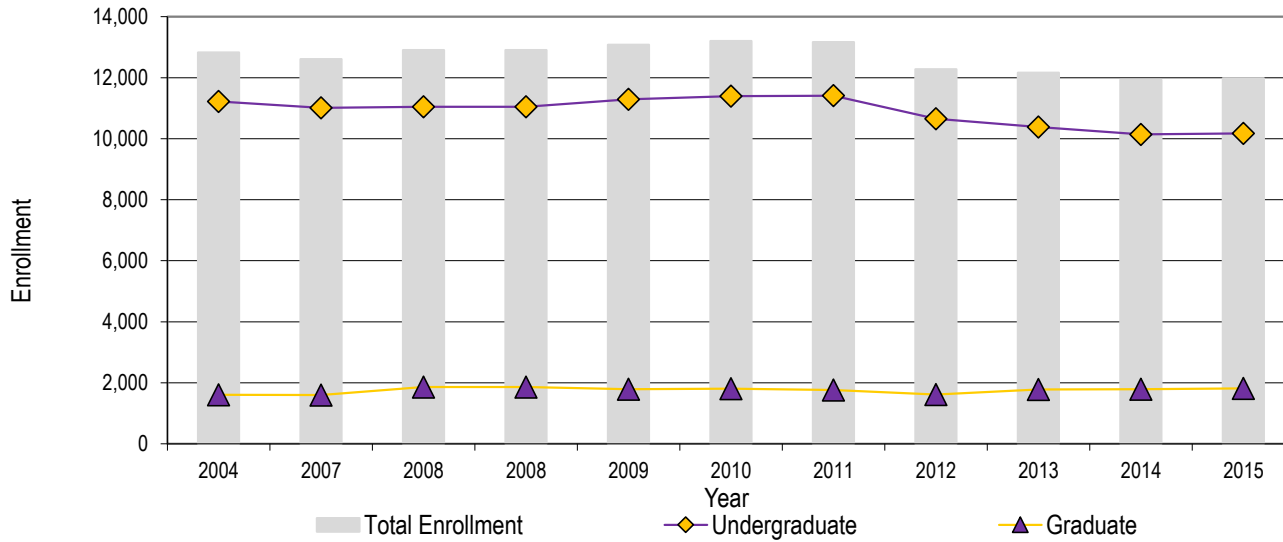
Source: Office of the Registrar

Headcount Enrollment 2004 - 2015

	UNDERGRADUATE		GRADUATE		Total	Annual Percent Change
	Full-Time	Part-Time	Full-Time	Part-Time		
2004	9,987	1,233	678	926	12,824	-4.6
2005	9,782	1,170	681	880	12,513	-2.4
2006	9,606	1,096	690	868	12,260	-2.0
2007	9,888	1,122	692	907	12,609	2.8
2008	10,028	1,019	731	1,130	12,908	2.4
2009	10,279	1,015	781	1,005	13,080	1.3
2010	10,378	1,013	770	1,040	13,201	0.9
2011	10,209	1,199	742	1,018	13,168	-0.2
2012	9,679	976	682	936	12,273	-6.8
2013	9,330	1,050	638	1,141	12,159	-0.9
2014	9,122	1,020	597	1,189	11,928	-1.9
2015	9,127	1,042	562	1,250	11,981	0.4

Source: Office of the Registrar

Headcount Enrollment by Level 2004 - 2015*



Source: Office of the Registrar

*Includes full-time and part-time students

Undergraduate Enrollment by Age 2005 - 2015

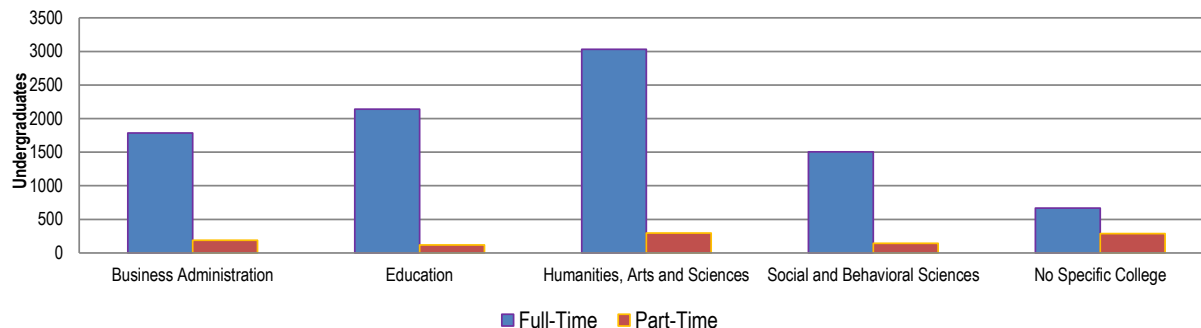
Fall Semester	2005	2006	2007	2008	2009	2010	2011	2012	2013	2014	2015
Total Enrollment	10,952	10,702	11,010	11,047	11,294	11,391	11,408	10,655	10,380	10,142	10,169
Under 18	108	106	113	91	94	102	49	21	64	46	29
18	1,463	1,526	1,729	1,758	1,708	1,733	1,165	1,001	992	1,068	1,119
19	1,669	1,699	1,756	1,950	1,915	1,909	1,879	1,779	1,682	1,677	1,779
20	2,062	1,974	1,986	2,013	2,254	2,201	2,072	2,008	1,908	1,833	1,828
21	2,067	2,120	2,114	2,045	2,054	2,300	2,227	2,158	2,098	2,023	1,955
22	1,584	1,353	1,417	1,383	1,330	1,322	1,729	1,611	1,598	1,554	1,456
23	677	686	596	579	577	527	855	776	771	741	706
24	289	312	312	258	292	264	309	352	309	300	326
25	194	165	191	184	174	197	200	158	178	170	198
26	121	120	129	126	139	137	152	118	117	115	104
27	92	77	90	88	98	91	118	89	87	85	111
28	78	73	69	74	91	69	82	86	60	70	58
29	58	58	66	57	69	71	61	62	55	58	54
30-39	294	263	268	256	310	301	325	293	307	272	284
40-49	138	116	120	120	127	104	134	101	96	85	101
50-64	55	51	49	61	60	61	48	41	57	43	53
65 and older	3	3	5	4	2	2	3	1	1	2	8

Source: Office of the Registrar

Undergraduate Headcount by College Fall 2011 - 2015

	Full-Time						Part-Time				
	2010	2011	2012	2013	2014	2015	2011	2012	2013	2014	2015
Total University	10,378	10,209	9,679	9,330	9,122	9,127	1,198	976	1,050	1,020	1,042
Business Administration	2,136	1,957	1,856	1,828	1,793	1,784	228	182	174	137	190
Education	2,241	2,186	2,058	2,058	2,029	2,140	182	121	130	127	120
Humanities, Arts and Sciences	-	3,481	3,371	3,189	3,073	3,030	365	328	310	330	297
Social and Behavioral Sciences	1,710	1,753	1,706	1,612	1,537	1,504	168	153	168	143	145
No Specific College	849	832	688	643	690	669	255	192	268	283	290

Fall 2015 Undergraduates by College



Source: Office of the Registrar

Fall 2015 Enrollment by Residence

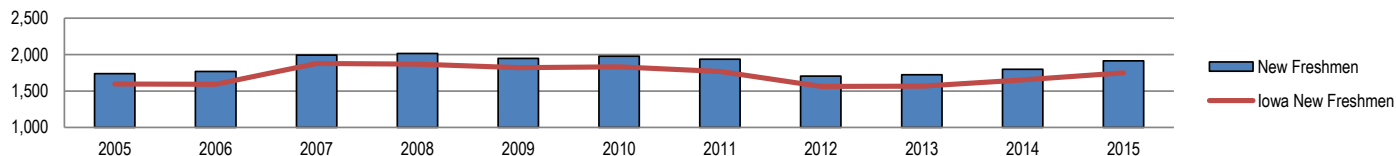
	U.S. Iowa Resident		U.S. Non-Iowa Resident		International Student		TOTAL
	N	%	N	%	N	%	N
Enrollment	10,549	88.0	816	6.8	616	5.1	11,981
New Freshmen	1,751	91.4	131	6.8	34	1.8	1,916
Undergraduate	9,083	89.3	605	5.9	481	4.7	10,169
New Graduate	472	80.1	81	13.8	36	6.1	589
Graduate	1,466	80.9	211	11.6	135	7.5	1,812

Source: Office of the Registrar

Enrollment by Residence 2005 - 2015

												5 Yr %	10 Yr %
Fall Semester	2005	2006	2007	2008	2009	2010	2011	2012	2013	2014	2015	Change	Change
Enrollment	12,513	12,260	12,609	12,908	13,080	13,201	13,168	12,273	12,159	11,928	11,981	-9.2	-4.3
Iowa Resident	11,400	11,129	11,444	11,562	11,896	11,978	11,915	11,095	10,842	10,491	10,549	-11.9	-7.5
U.S., Non-Iowa Resident	691	699	693	882	731	743	765	724	797	811	816	9.8	18.1
International Student	422	432	472	464	453	480	488	454	520	626	616	28.3	46.0
New Freshmen	1,737	1,768	1,991	2,015	1,946	1,978	1,937	1,704	1,722	1,797	1,916	-3.1	10.3
Iowa Resident	1,598	1,594	1,878	1,870	1,820	1,833	1,769	1,563	1,568	1,651	1,751	-4.5	9.6
U.S., Non-Iowa Resident	124	139	100	125	101	107	133	119	132	112	131	22.4	5.6
International Student	15	35	13	20	25	38	35	22	22	34	34	-10.5	126.7
Undergraduate	10,952	10,702	11,010	11,047	11,294	11,391	11,408	10,655	10,380	10,142	10,169	-10.7	-7.1
Iowa Resident	10,185	9,907	10,157	10,185	10,469	10,532	10,522	9,806	9,411	9,052	9,083	-13.8	-10.8
U.S., Non-Iowa Resident	537	542	555	598	541	526	541	530	578	603	605	15.0	12.7
International Student	230	253	298	264	284	333	345	319	391	487	481	44.4	109.1
Graduate	1,561	1,558	1,599	1,861	1,786	1,810	1,760	1,618	1,779	1,786	1,812	0.1	16.1
Iowa resident	1,215	1,222	1,287	1,377	1,427	1,446	1,393	1,289	1,431	1,439	1,466	1.4	20.7
U.S., Non-Iowa Resident	154	157	138	284	190	217	224	194	219	208	211	-2.8	37.0
International Student	192	179	174	200	169	147	143	135	129	139	135	-8.2	-29.7

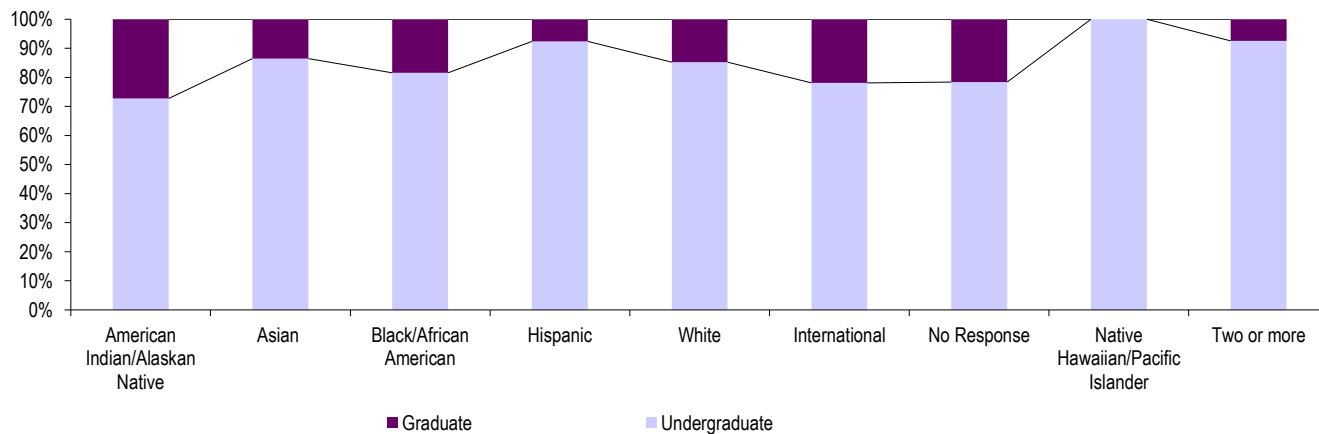
New Freshmen



Source: Office of the Registrar

Fall 2015 Enrollment by Race/Ethnicity

	American Indian/ Alaskan Native		Asian		Black/ African American		Hispanic		White		International		No Response		Native Hawaiian/ Pacific Islander		Two or more	
	N	%	N	%	N	%	N	%	N	%	N	%	N	%	N	%	N	%
Enrollment	22	100	133	100	352	100	379	100	9,868	100	616	100	374	100	7	100	230	100
Undergraduate	16	72.7	115	86.5	287	81.5	350	92.3	8,407	85.2	481	78.1	293	78.3	7	100.0	213	92.6
Graduate	6	27.3	18	13.5	65	18.5	29	7.7	1,461	14.8	135	21.9	81	21.7	0	0.0	17	7.4
Percentage	0.2		1.1		2.9		3.2		82.4		5.1		3.1		0.1		1.9	



Undergraduate 10,169
Graduate 1,812

Minority Student Enrollment 2004 - 2015*

	UNDERGRADUATE						GRADUATE					
	American Indian/ Alaskan Native	Asian/ Pacific Islander	Black/ African American	Hispanic/ Latino	Native Hawaiian/ Pacific Islander	Two or more	American Indian/ Alaskan Native	Asian/ Pacific Islander	Black/ African American	Hispanic/ Latino	Native Hawaiian/ Pacific Islander	Two or more
2004	30	114	324	200			4	11	101	25		
2005	23	116	317	164			3	13	98	22		
2006	28	131	288	181			3	16	89	24		
2007	34	133	287	177			2	18	70	24		
2008	28	121	300	199			6	26	92	38		
2009	20	117	305	243	5	77	3	19	72	39	0	4
2010	21	105	303	232	4	103	4	19	80	44	0	7
2011	17	118	300	257	2	121	7	26	66	41	1	11
2012	21	107	300	280	4	143	3	21	67	33	0	10
2013	19	87	279	289	5	168	5	20	62	33	2	11
2014	20	90	285	339	7	195	5	18	54	38	0	15
2015	16	115	287	350	7	213	6	18	65	29	0	17

Source: Office of the Registrar

Includes all international students; other categories include American citizens, immigrants, asylees, and refugees only.

NOTE: The Race/Ethnicity reporting was changed in Fall 2009 semester to implement the new U.S. Department of Education guidelines.

Fall On-Campus Headcount and Full-Time Equivalent (FTE) Enrollment by Level 2004-2015

	Headcount							FTE Enrollment						
	Undergraduate					Graduate		Undergraduate					Graduate	
	F	S	Jr	Sr	Unclassified	Master's	Advanced	F	S	Jr	Sr	Unclassified	Master's	Advanced
2004	2,199	1,957	2,921	3,936	207	1,100	504	1,997	1,764	2,589	3,377	68	893	318
2005	2,189	2,004	2,928	3,591	240	1,112	449	2,045	1,869	2,665	3,133	89	933	282
2006	2,266	1,919	2,857	3,418	242	1,113	445	2,090	1,814	2,631	3,001	87	945	267
2007	2,520	1,924	2,866	3,425	275	1,157	442	2,299	1,808	2,646	3,003	100	998	253
2008	2,528	2,100	2,766	3,416	237	1,369	492	2,343	2,003	2,563	3,010	94	1,080	272
2009	2,377	2,214	2,971	3,482	250	1,300	486	2,172	2,109	2,772	3,057	93	1,098	270
2010	2,340	2,181	3,037	3,574	259	1,289	521	2,139	2,068	2,827	3,159	108	1,076	304
2011	2,388	2,173	2,823	3,872	152	1,236	524	2,060	2,031	2,562	3,342	60	1,046	292
2012	2,091	2,096	2,737	3,589	142	1,161	457	1,891	1,999	2,533	3,153	54	977	266
2013	2,037	1,902	2,662	3,569	210	1,283	496	1,874	1,810	2,485	3,114	60	991	282
2014	2,047	1,928	2,437	3,470	260	1,232	554	1,899	1,818	2,260	3,065	77	907	285
2015	2,174	1,933	2,492	3,335	235	1,237	575	2,010	1,814	2,312	2,937	78	914	280

Source: Office of the Registrar

First Major Only by College and Level Fall 2010 - 2015

	Undergraduate						Graduate					
	2010	2011	2012	2013	2014	2015	2010	2011	2012	2013	2014	2015
Total University	11,391	11,408	10,655	10,380	10,142	10,169	1,810	1,760	1,618	1,779	1,786	1,812
Business Administration	2,324	2,185	2,038	2,002	1,930	1,974	65	84	89	86	84	73
Education	2,381	2,368	2,179	2,188	2,156	2,260	564	557	528	603	619	585
Humanities, Arts and Sciences	-	3,846	3,699	3,499	3,403	3,327	-	472	381	417	433	503
Social and Behavioral Sciences	1,863	1,921	1,859	1,780	1,680	1,649	282	249	231	246	231	231
No Specific College	1,125	1,088	880	911	973	959	418	398	389	427	419	420

Source: Office of the Registrar

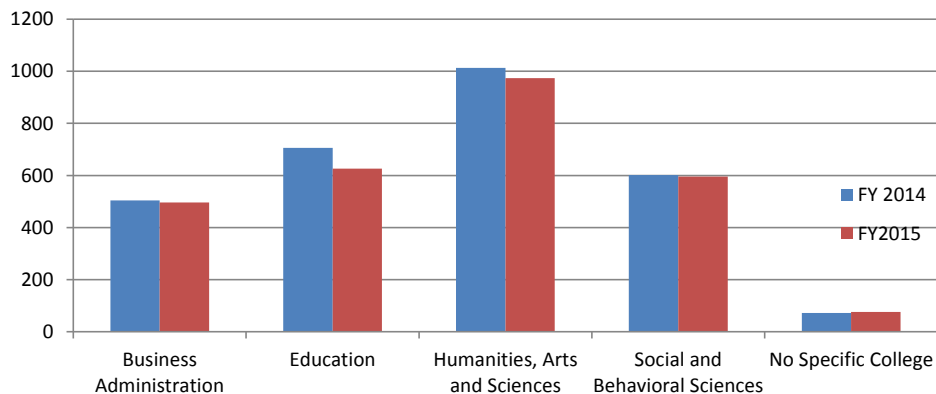
Annual Degrees Awarded by Level 2005 - 2015

	2004- 2005	2005- 2006	2006- 2007	2007- 2008	2008- 2009	2009- 2010	2010- 2011	2011- 2012	2012- 2013	2013- 2014	2014- 2015	5 Yr % Change	10 Yr % Change
Total Degrees Awarded	3,176	2,933	2,748	2,720	2,751	2,934	2,725	3,034	2,875	2,897	2,768	-5.7	-12.8
Baccalaureate	2,669	2,423	2,259	2,221	2,268	2,347	2,198	2,440	2,349	2,357	2,303	-1.9	-13.7
Master's	494	485	471	474	467	561	509	572	483	512	446	-20.5	-9.7
Specialists	3	7	10	9	6	6	5	10	13	8	5	-16.7	66.7
Doctorates	10	18	8	16	10	20	13	12	30	20	14	-30.0	40.0
Undergraduate Degrees Awarded	2,669	2,423	2,259	2,221	2,268	2,347	2,198	2,440	2,349	2,357	2,303	-1.9	-13.7
Bachelor of Arts	2,514	2,272	2,148	2,121	2,148	2,201	2,079	2,293	2,227	2,209	2,142	-2.7	-14.8
Bachelor of Fine Arts	9	15	8	8	3	8	6	11	11	11	8	0.0	-11.1
Bachelor of Music	22	19	19	14	22	27	15	22	18	34	25	-7.4	13.6
Bachelor of Science	90	93	64	64	76	84	84	98	79	86	91	8.3	1.1
Bachelor of Liberal Studies	34	24	20	14	19	27	14	16	14	17	37	37.0	8.8
Graduate Degrees Awarded	507	510	489	499	483	587	527	594	526	540	465	-20.8	-8.3
Master of Accounting	13	19	11	23	36	29	21	25	20	18	23	-20.7	76.9
Master of Arts in Education	147	108	129	119	99	147	105	121	104	118	112	-23.8	-23.8
Master of Arts	206	237	231	208	204	243	255	284	235	242	190	-21.8	-7.8
Master of Business Administration	52	62	35	42	42	40	31	27	28	36	38	-5.0	-26.9
Master of Music	19	12	13	22	14	24	10	26	11	15	13	-45.8	-31.6
Master of Public Policy	6	5	11	16	10	4	10	11	9	11	12	200.0	100.0
Master of Science	21	15	10	10	16	15	19	21	22	23	26	73.3	23.8
Master of Social Work	30	27	31	29	27	40	41	40	33	37	32	-20.0	6.7
Professional Science Master's	0	0	0	5	19	19	17	17	21	12	0	-100.0	--
Specialist in Education	3	7	10	9	6	6	5	10	13	8	5	-16.7	66.7
Doctor of Technology/Doctor of Industrial Technology	1	3	0	1	1	2	1	1	4	6	2	0.0	100.0
Doctor of Education	9	15	8	15	9	18	12	11	26	14	12	-33.3	33.3

Source: Office of the Registrar

Degrees Granted by College 2013 - 2014 and 2014 - 2015

	Baccalaureates				Master's				Specialists				Doctorates			
	2013-2014		2014-2015		2013-2014		2014-2015		2013-2014		2014-2015		2013-2014		2014-2015	
	N	%	N	%	N	%	N	%	N	%	N	%	N	%	N	%
Total Degrees Granted	2,357	100	2,303	100	512	100	446	100	8	100	5	100	20	100	14	100
Business Administration	450	19.1	435	18.9	54	10.5	61	13.7	0	0	0	0	0	0	0	0
Education	513	21.8	444	19.3	171	33.4	165	37.0	8	100	5	100	14	0.7	12	0.9
Humanities, Arts and Sciences	837	35.5	852	37.0	170	33.2	120	26.9	0	0	0	0	6	0.3	2	0.1
Social and Behavioral Sciences	498	21.1	496	21.5	104	20.3	100	22.4	0	0	0	0	0	0	0	0
No Specific College	59	2.5	76	3.3	13	2.5	0	0.0	0	0	0	0	0	0	0	0



2014-2015 Degrees by college
2,768 Degrees granted

Source: Office of the Registrar

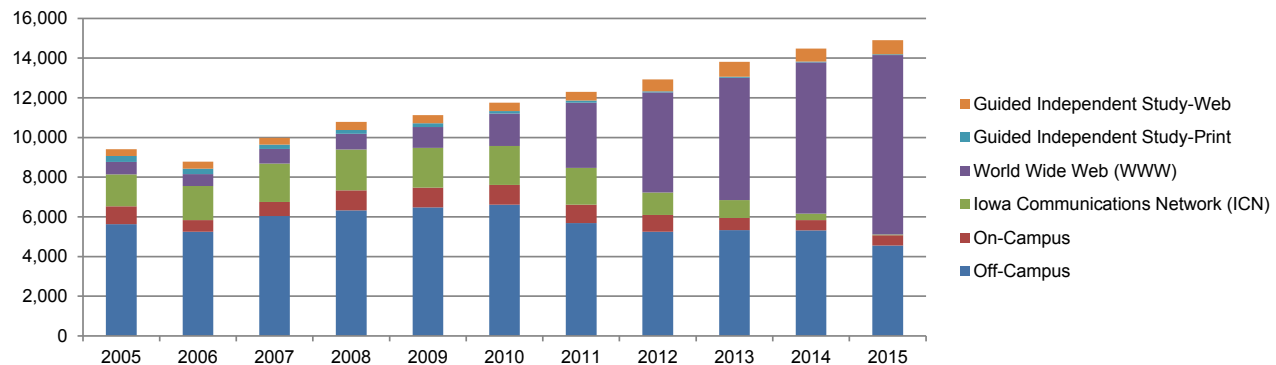
Undergraduate Retention and Graduation Rates 1995 - 2014

Admit Year	Total First Time Freshmen	Continuing 2nd Year		Graduating 4th Year		Graduating 6th Year	
		N	%	N	%	N	%
1995	2,007	1,642	81.8	606	30.2	1,293	64.4
1996	2,012	1,649	82.0	674	33.5	1,342	66.7
1997	1,919	1,582	82.4	556	29.0	1,254	65.3
1998	1,982	1,605	81.0	588	29.7	1,273	64.2
1999	2,124	1,729	81.4	713	33.6	1,379	64.9
2000	2,218	1,863	84.0	756	34.1	1,492	67.3
2001	2,064	1,681	81.4	672	32.6	1,348	65.3
2002	1,822	1,469	80.6	614	33.7	1,152	63.2
2003	1,740	1,417	81.4	618	35.5	1,160	66.7
2004	1,652	1,337	80.9	584	35.4	1,110	67.2
2005	1,694	1,390	82.1	616	36.4	1,130	66.7
2006	1,684	1,386	82.3	648	38.5	1,117	66.3
2007	1,922	1,608	83.7	708	36.8	1,278	66.5
2008	1,976	1,627	82.3	747	37.8	1,261	63.8
2009	1,917	1,582	82.5	721	37.6	1,296	67.6
2010	1,934	1,586	82.0	759	39.2		
2011	1,897	1,543	81.3	756	39.9		
2012	1,678	1,391	82.9				
2013	1,689	1,430	84.7				
2014	1,762	1,411	80.1				

Source: Office of the Registrar

Continuing Education Credit Enrollment Trends 2005 - 2015

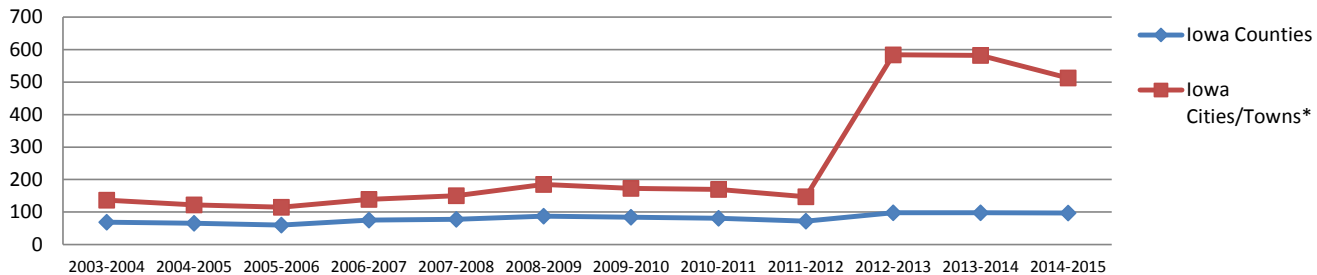
	2004- 2005	2005- 2006	2006- 2007	2007- 2008	2008- 2009	2009- 2010	2010- 2011	2011- 2012	2012- 2013	2013- 2014	2014- 2015
Total	9,413	8,778	9,984	10,783	11,127	11,749	12,302	12,924	13,818	14,481	14,906
Annual Percent Change	-1.2	-6.7	13.7	8.0	3.2	5.6	4.7	5.1	6.9	4.8	2.9
Off-Campus	5,629	5,246	6,048	6,330	6,477	6,617	5,690	5,257	5,336	5,313	4,561
On-Campus	910	596	700	1001	995	989	921	846	616	530	514
Iowa Communications Network (ICN)	1,606	1,719	1,936	2,070	2,009	1,967	1,856	1,123	898	320	35
World Wide Web (WWW)	630	595	735	782	1,044	1,633	3,289	5,041	6,153	7,627	9,043
Guided Independent Study-Print	294	273	229	200	197	130	109	63	67	41	40
Guided Independent Study-Web	344	349	336	400	405	413	437	594	748	650	713



Continuing Education Courses Offered 2004 - 2015

	Iowa Counties	Iowa Cities/Towns*	Number of Off-Campus Degree and Certificate Programs
2003-2004	69	137	19
2004-2005	66	122	20
2005-2006	60	115	21
2006-2007	75	139	22
2007-2008	78	150	21
2008-2009	87	185	23
2009-2010	84	173	24
2010-2011	81	170	24
2011-2012	72	147	25
2012-2013	98	584	27
2013-2014	98	582	32
2014-2015	97	513	37

Continuing Education Course Locations Offered

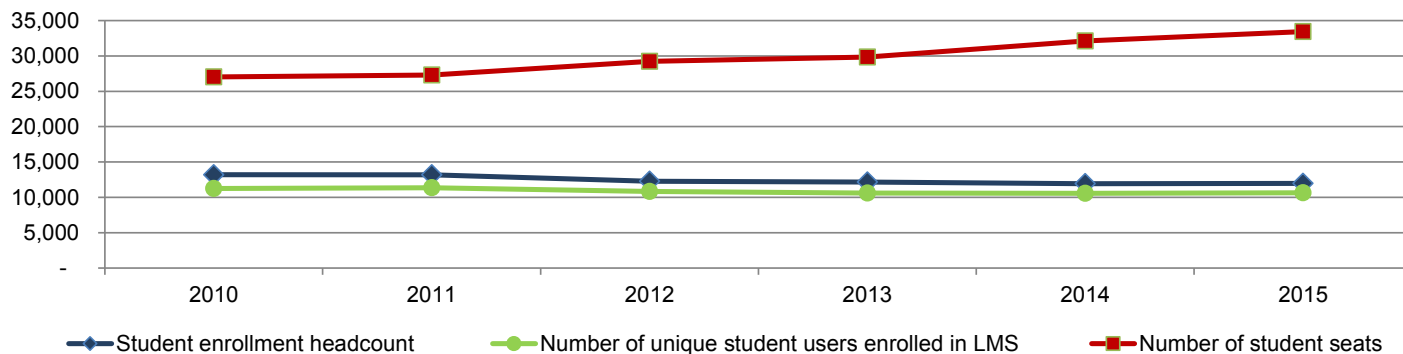


Source: *Continuing Education and Special Programs*

*Effective 2012-2013, Iowa Cities/Towns reflects locations in which students enrolled in courses offered at an off-campus location, an ICN location, in a guided independent study course, or in an online (semester) course. Prior to 2012-2013, locations reflected only students enrolled in off-campus, ICN, or guided independent study courses. Including city/town locations for students enrolled in online courses brings reporting in line with practices at the other Iowa Regent universities.

Web-Based Learning Management System (LMS) 2010 - 2015

	2010	2011	Fall 2012	2013	2014	2015
Student enrollment headcount	13,201	13,168	12,273	12,159	11,928	11,981
Number of unique student users enrolled in LMS	11,263	11,357	10,835	10,611	10,567	10,635
Number of student seats	27,032	27,307	29,237	29,858	32,122	33,443
Number of instructors or designers	385	419	468	482	547	564
Number of active academic organized sections in LMS	1,001	1,248*	1,309	1,330	1,488	1,536



Source: ITS - Educational Technology

*Prior to the Fall 2011 semester, UNI implemented a new course numbering system which resulted in undergraduate and graduate sections of the same class being entered individually into the new Student Information System (SIS). Although we use the same method to count the number of sections, this change will result in a higher number of sections counted than with the previous SIS used for the Fall 2010 and older semesters. This is noted so that viewers do not directly compare the "Number of active academic organized sections in LMS" values for Fall 2010 and Fall 2011.

Fall Semester Residence Hall Occupancy by Gender and Level 2004 - 2015

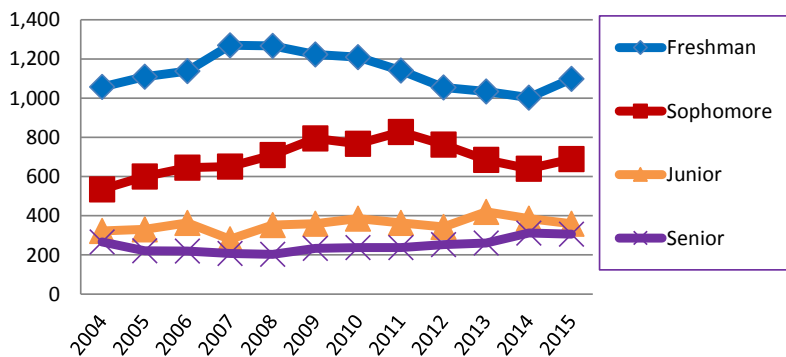
Female

	Freshman	Sophomore	Junior	Senior	Unclassified & Graduates
2004	1,057	535	323	266	95
2005	1,110	600	330	221	120
2006	1,138	645	363	220	103
2007	1,270	651	280	207	109
2008	1,267	710	353	203	104
2009	1,223	794	359	233	65
2010	1,209	767	386	237	101
2011	1,141	828	363	238	78
2012	1,055	763	343	252	84
2013	1,034	685	420	261	88
2014	1,003	640	385	312	109
2015	1,099	689	359	306	151

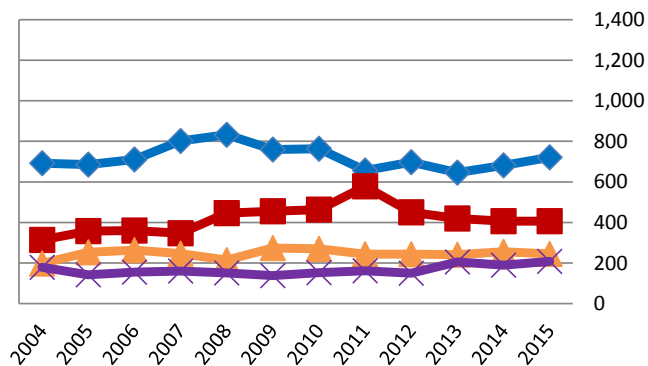
Male

	Freshman	Sophomore	Junior	Senior	Unclassified & Graduates
2004	692	314	198	179	83
2005	686	357	253	142	79
2006	711	360	264	155	82
2007	802	347	247	161	103
2008	833	446	215	151	90
2009	759	455	274	138	69
2010	763	463	270	153	79
2011	657	578	244	162	70
2012	698	450	244	150	84
2013	646	419	241	205	62
2014	681	407	255	190	106
2015	721	406	245	208	153

Undergraduates - Female



Male





Alumni



Alumni

Total Living Alumni by College 2011 - 2015

College	2011		2012		2013		2014		2015	
	N	%	N	%	N	%	N	%	N	%
Subtotal Alumni***	109,285		110,837		113,152		115,405		117,099	
TOTAL Living Alumni****	103,952		106,842		109,062		111,241		112,926	
Business Administration	21,558	19.7	21,985	19.8	22,423	19.8	22,864	19.8	23,225	19.8
Education*	33,879	31.0	33,880	30.6	34,370	30.4	34,819	30.2	34,965	29.9
Humanities, Arts and Sciences	32,861	30.1	33,534	30.3	34,355	30.4	35,155	30.5	35,848	30.6
Social and Behavioral Sciences	17,558	16.1	17,940	16.2	18,438	16.3	18,941	16.4	19,376	16.5
College Unassigned/Interdisciplinary**	3,429	3.1	3,498	3.2	3,566	3.2	3,626	3.1	3,685	3.1

Source: *University Advancement*

*Includes Alumni earning only Teaching Certificates.

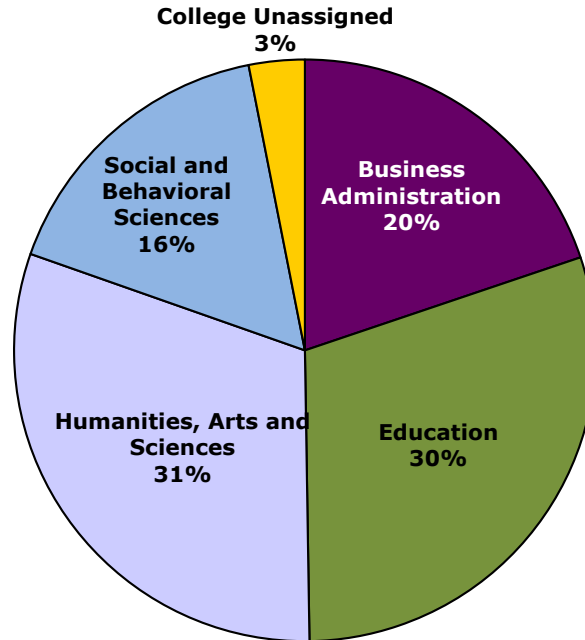
**Includes Individual Studies, General Studies, Liberal Studies and Interdisciplinary majors.

***Alumni having earned degrees in different colleges are counted once in each college; alumni earning multiple degrees in the same college are counted only once for that college.

****Grads counted a single time even when earning multiple degree(s).

Updated 12-9-2015; includes grads through August 2015.

Total Living Alumni by College



Alumni = 117,099

Alumni by State 2015*

State	Alumni	State	Alumni
Alabama	189	Montana	168
Alaska	140	Nebraska	1,695
Arizona	2,074	Nevada	363
Arkansas	317	New Hampshire	70
California	2,473	New Jersey	200
Colorado	2,675	New Mexico	249
Connecticut	139	New York	484
Delaware	38	North Carolina	708
Florida	1,731	North Dakota	111
Georgia	659	Ohio	598
Hawaii	145	Oklahoma	320
Idaho	156	Oregon	538
Illinois	3,956	Pennsylvania	370
Indiana	679	Rhode Island	33
Iowa	69,770	South Carolina	308
Kansas	1,434	South Dakota	552
Kentucky	219	Tennessee	496
Louisiana	141	Texas	3,233
Maine	49	Utah	141
Maryland	311	Vermont	28
Massachusetts	216	Virginia	691
Michigan	614	Washington	809
Minnesota	5,273	West Virginia	30
Mississippi	73	Wisconsin	2,281
Missouri	2,031	Wyoming	131
		District of Columbia	73

Source: *University Advancement*

*As of 12-9-2015 including Summer 2015 grads.

Alumni by Iowa County 2015

County	Alumni	County	Alumni	County	Alumni	County	Alumni
Adair	60	Decatur	37	Johnson	2,373	Pocahontas	110
Adams	23	Delaware	483	Jones	371	Polk	12,025
Allamakee	267	Des Moines	373	Keokuk	153	Pottawattamie	615
Appanoose	81	Dickinson	393	Kossuth	366	Poweshiek	409
Audubon	64	Dubuque	2,055	Lee	251	Ringgold	33
Benton	757	Emmet	110	Linn	6,529	Sac	167
Black Hawk	12,135	Fayette	563	Louisa	100	Scott	2,571
Boone	372	Floyd	552	Lucas	69	Shelby	97
Bremer	1,847	Franklin	231	Lyon	42	Sioux	179
Buchanan	1,023	Fremont	29	Madison	207	Story	1,432
Buena Vista	215	Greene	157	Mahaska	223	Tama	653
Butler	794	Grundy	868	Marion	444	Taylor	27
Calhoun	203	Guthrie	155	Marshall	941	Union	88
Carroll	440	Hamilton	342	Mills	95	Van Buren	44
Cass	142	Hancock	218	Mitchell	296	Wapello	342
Cedar	293	Hardin	679	Monona	60	Warren	934
Cerro Gordo	1,405	Harrison	85	Monroe	75	Washington	363
Cherokee	132	Henry	251	Montgomery	53	Wayne	38
Chickasaw	465	Howard	255	Muscatine	551	Webster	637
Clarke	55	Humboldt	226	O'Brien	162	Winnebago	302
Clay	298	Ida	89	Osceola	35	Winneshiek	564
Clayton	415	Iowa	271	Page	92	Woodbury	622
Clinton	649	Jackson	315	Palo Alto	209	Worth	179
Crawford	142	Jasper	527	Plymouth	240	Wright	301
Dallas	1,372	Jefferson	127				
Davis	61					TOTAL	69,770

Source: University Advancement 12-9-2015

Post-Graduation Status of 2013 - 2014 and 2014 - 2015 Bachelor's Degree Recipients*

College	Graduates	No Information	Total Responding	Employed	Graduate Education	Undergrad Education
2013 - 2014						
Business	394	43	351	307	37	0
Education	508	47	461	390	48	0
Humanities, Arts and Sciences	802	102	700	513	165	0
Social & Behavioral Sciences	486	78	408	318	69	0
TOTAL	2,190	270	1,920	1,528	319	0
			(1920 of 2190)	(1528 of 1920)	(319 of 1920)	(0 of 1920)
			87.7%	79.6%	16.6%	0.00%
2014 - 2015						
Business	368	60	308	263	30	0
Education	443	33	410	344	60	0
Humanities, Arts and Sciences	717	75	642	471	136	0
Social & Behavioral Sciences	483	77	406	315	77	0
TOTAL	2,011	245	1,766	1,393	303	0
			(1766 of 2011)	(1393 of 1766)	(303 of 1766)	(0 of 1766)
			87.8%	78.9%	17.2%	0.00%

Source: Career Services

*Method: Data was collected through a survey of graduates attending commencement exercises and follow-up telephone calls.

Post-Graduation Status of 2013 - 2014 and 2014 - 2015 Graduate Degree Recipients*

College	Graduates	No Information	Total Responding	Employed**	Continuing Education	Other
2013 - 2014						
Business	28	3	25	25	0	0
Education	102	7	95	93	2	0
Humanities, Arts and Sciences	95	4	91	84	7	0
Social & Behavioral Sciences	54	4	50	47	3	0
TOTAL	279	18	261	249	12	0
			(261 of 279)	(249 of 261)	(12 of 261)	(0 of 261)
			93.5%	95.4%	4.6%	0.0%
2014 - 2015						
Business	16	0	16	15	0	1
Education	49	1	48	41	3	2
Humanities, Arts and Sciences	51	0	51	47	2	1
Social & Behavioral Sciences	33	0	33	28	3	1
Interdisciplinary	1	0	1	1	0	0
TOTAL	150	1	149	132	8	5
			(149 of 150)	(132 of 149)	(8 of 149)	(5 of 149)
			99.3%	88.6%	5.4%	3.4%

Source: *Institutional Research & Effectiveness*

*Method: Data was collected through a survey of graduates attending commencement exercises.

**75.2% of respondents employed in Iowa 2014 - 2015

Undergraduate Plans for Further Education 2014 - 2015*

College	Completed Survey Item		Accepted to a Graduate/Professional Program		Currently Applying to Programs		Accepted to Another Undergraduate Program	
	N	%	N	%	N	%	N	%
TOTAL	1,603	100	193	100	199	100	18	100
Business Administration	312	19.46%	29	15.03%	19	9.55%	6	33.33%
Education	357	22.27%	34	17.62%	26	13.07%	7	38.89%
Humanities, Arts and Sciences	594	37.06%	92	47.67%	86	43.22%	2	11.11%
Social and Behavioral Sciences	310	19.34%	33	17.10%	66	33.17%	3	16.67%
Interdisciplinary	30	1.87%	5	2.59%	2	1.01%	3	16.67%
			(193 of 1603)		(199 of 1603)		(18 of 1603)	
			12.04%		12.41%		1.12%	

Source: *Institutional Research & Effectiveness*

*December 2014 and May 2015 Graduating Senior Surveys

Graduate Plans for Further Education 2014 - 2015*

College	Completed Survey Item		Accepted to a Graduate/Professional Program		Currently Applying to Programs		No Definite Plans for Further Education	
	N	%	N	%	N	%	N	%
TOTAL	132	100.00%	5	3.79%	6	4.55%	121	91.67%
Business Administration	15	11.36%	0	0.00%	0	0.00%	15	12.40%
Education	45	34.09%	1	20.00%	0	0.00%	44	36.36%
Humanities, Arts and Sciences	42	31.82%	2	40.00%	5	83.33%	35	28.93%
Social and Behavioral Sciences	29	21.97%	2	40.00%	1	16.67%	26	21.49%
Interdisciplinary	1	0.76%	0	0.00%	0	0.00%	1.0	0.83%
			(5 of 132)		(6 of 132)		(121 of 132)	
			3.8%		4.5%		91.7%	

Source: Institutional Research & Effectiveness

*December 2014 and May 2015 Graduate Program Surveys



Faculty & Staff



Faculty & Staff

UNI Workforce by Employment Categories 2005 - 2015

Categories	2005 N	2006 N	2007 N	2008 N	2009 N	2010 N	2011 N	2012 N	2013 N	2014 N	2015 N	5 Yr % Change	10 Yr % Change
Total Workforce**	1,776	1,781	1,791	1,890	1,883	1,842	1,894	1,801	1,819	1,861	1,835	-0.4	3.3
Annual Percent Change	0.4	0.3	0.6	5.5	-0.4	-2.2	2.8	-4.9	1.0	2.3	-1.4		
Executive/Managerial	92	94	102	110	112	98	94	95	93	97	95	-3.1	3.3
Faculty-Tenure/Tenure-Track*	547	542	536	550	546	546	552	519	525	531	517	-5.3	-5.5
Faculty-Term/Renewable Term	-	-	-	40	40	41	63	37	36	47	51	24.4	-
Professional/Scientific	521	529	541	570	577	578	603	592	609	622	638	10.4	22.5
Secretarial/Clerical	285	281	277	275	272	256	264	254	249	249	230	-10.2	-19.3
Technical/Paraprofessional	33	31	31	30	27	24	22	20	20	21	16	-33.3	-51.5
Skilled Crafts	68	68	64	63	60	55	55	56	59	59	57	3.6	-16.2
Service/Maintenance	230	236	240	252	249	244	241	228	228	235	231	-5.3	0.4

Source: Office of Human Resource Services

*Excludes some faculty with administrative appointments

**Excludes temporary and second appointments

NOTE: 2008-2015 data modified to include/separate Faculty-Term/Renewable Term employment category.

UNI Workforce Headcount and FTE by Employment Categories 2011 - 2015

Categories	2011		2012		2013		2014		2015	
	N	FTE	N	FTE	N	FTE	N	FTE	N	FTE
Total Workforce**	1,894	1,804.5	1,801	1,723.5	1,819	1,739.5	1,861	1,776.6	1,835	1,734.0
Annual Percent Change		2.9		-4.5		0.9		2.1		-6.8
Executive/Managerial	94	93.5	95	93.6	93	91.6	97	95.3	95	92.1
Faculty -Tenure/Tenure-Track*	552	533.3	519	504.1	525	509.6	531	515.3	517	498.7
Term*	63	61.3	37	36.0	36	36.0	47	46.5	51	49.5
Professional/Scientific	603	566.9	592	559.5	609	574.1	622	587.1	638	589.7
Secretarial/Clerical	264	249.8	254	241.8	249	236.6	249	235.8	230	217.9
Technical/Paraprofessional	22	21.6	20	19.6	20	19.6	21	19.8	16	15.4
Skilled Crafts	55	54.7	56	55.7	59	58.7	59	58.7	57	57.0
Service/Maintenance	241	223.4	228	213.2	228	213.3	235	218.1	231	213.7

Source: Office of Human Resource Services

*Excludes some faculty with administrative appointments

**Excludes temporary

UNI Workforce by Race/Ethnicity 2009 - 2015

Categories	2009		2010		2011		2012		2013		2014		2015	
	N	%	N	%	N	%	N	%	N	%	N	%	N	%
Total Workforce**	1,846		1,811		1,894		1,801		1,819		1,861		1,835	
Annual Percent Change		-0.2		-1.9		4.6		-4.9		1.0		2.3		-1.4
American Indian/Alaskan Native	5	0.3	3	0.2	3	0.2	3	0.2	3	0.2	3	0.2	3	0.2
Asian/ <i>Pacific Islander</i>	54	2.9	57	3.1	62	3.3	59	3.3	60	3.3	64	3.4	64	3.5
Black/African American	75	4.1	79	4.4	83	4.4	83	4.6	82	4.5	89	4.8	85	4.6
Hispanic/ <i>Latino</i>	32	1.7	34	1.9	35	1.8	37	2.1	38	2.1	34	1.8	33	1.8
White	1,669	90.4	1,627	89.8	1,701	89.8	1,610	89.4	1,627	89.4	1,663	89.4	1,641	89.4
Native Hawaiian/Pacific Islander	1	0.1	1	0.1	1	0.1	1	0.1	1	0.1	1	0.1	1	0.1
Two or more	10	0.5	10	0.6	9	0.5	8	0.4	8	0.4	7	0.4	8	0.4
Unknown	0	0.0	0	0.0	0	0.0	0	0.0	0	0.0	0	0.0	0	0.0

Source: Office of Human Resource Services

**Excludes temporary and second appointments

NOTE: Fall 2009 semester Race/Ethnicity reporting was changed to implement the U.S. Department of Education guidelines.

UNI Workforce by Employment Categories and Race/Ethnicity Fall 2015

	American Indian/ Native	Asian	Black/ African American	Hispanic	White	Native Hawaiian/ Pacific Islander	Two or more	Total
Total Workforce**	3	64	85	33	1,641	1	8	1,835
Executive/Managerial	1	1	4	0	89	0	0	95
Faculty -Tenure/Tenure-Track*	1	48	14	14	436	1	3	517
Term*	0	1	3	0	47	0	0	51
Professional/Scientific	0	8	35	12	578	0	5	638
Secretarial/Clerical	0	1	10	1	218	0	0	230
Technical/Paraprofessional	0	0	1	1	14	0	0	16
Skilled Crafts	0	1	1	1	54	0	0	57
Service/Maintenance	1	4	17	4	205	0	0	231

Source: Office of Human Resource Services

*Excludes some faculty with administrative appointments

**Excludes temporary and second appointments

UNI Workforce Headcount and FTE by Employment Categories and College Fall 2015

	Total University		Business		Education		Humanities, Arts, and Sciences		Social and Behavioral Sciences		No Specific College	
	N	FTE	N	FTE	N	FTE	N	FTE	N	FTE	N	FTE
Total Workforce**	1,835	1,734.0	124	120.2	224	206.3	390	363.2	145	137.3	952	906.9
Executive/Managerial	95	92.1	7	7.0	8	8.0	18	18.0	9	9.0	53	50.1
Faculty -Tenure/Tenure-Track*	517	498.7	50	47.5	119	115.2	234	227.8	99	94.5	15	13.8
Faculty -Term/Renewable Term*	51	49.5	11	11.0	18	16.5	20	20.0	2	2.0	0	0.0
Professional/Scientific	638	589.7	44	42.9	56	45.2	83	64.1	18	16.4	437	421.2
Secretarial/Clerical	230	217.8	10	9.8	22	20.4	31	29.9	17	15.5	150	142.3
Technical/Paraprofessional	16	15.4	2	2.0	0	0.0	2	1.8	0	0.0	12	11.6
Skilled Crafts	57	57.0	0	0.0	0	0.0	0	0.0	0	0.0	57	57.0
Service/Maintenance	231	213.7	0	0.0	1	1.0	2	1.7	0	0.0	228	211.1

Source: Office of Human Resource Services

*Excludes some faculty with administrative appointments

**Excludes temporary



Budget & Finance



Budget & Finance

Statement of Revenues, Expenses and Changes In Net Position 2010 - 2015

	2010	2011	2012	2013	2014	2015
OPERATING REVENUES						
Tuition & Fees	\$81,866,942	\$87,554,233	\$91,725,487	\$90,441,952	\$89,744,628	\$89,653,189
Less Scholarship Allowance	-21,202,125	-24,139,088	-25,482,683	-25,334,812	-25,424,620	-27,115,085
Net Tuition & Fees	\$60,664,817	\$63,415,145	\$66,242,804	\$65,107,140	\$64,320,008	\$62,538,104
Federal Grants and Contracts	23,206,038	23,426,866	21,158,763	18,481,032	16,662,776	15,782,976
State and Local Grants and Contracts	2,634,637	2,270,886	2,182,000	2,102,578	2,053,427	2,983,411
Nongovernmental Grants and Contracts	5,850,936	5,097,077	4,675,205	3,613,871	3,320,222	3,943,663
Sales and Services of Educational Activities	7,687,525	7,998,091	8,237,789	4,937,703	6,403,218	6,168,882
Interest on Student Loans	227,371	237,471	238,655	245,250	226,660	210,849
Other Operating Revenue	2,868,615	992,772	501,925	726,808	562,860	711,025
Auxiliary Enterprises	55,193,227	56,156,143	58,742,116	56,344,034	57,101,721	60,468,336
Total Operating Revenues	\$158,333,166	\$159,594,451	\$161,979,257	\$151,558,416	\$150,650,892	\$152,807,246
OPERATING EXPENSES						
Instruction	\$71,168,267	\$78,570,575	\$80,291,964	\$82,764,796	\$86,505,596	\$86,536,932
Research	2,507,353	3,106,240	2,951,957	3,138,471	2,982,535	3,175,745
Public Service	31,497,042	25,396,214	22,152,465	24,325,404	25,052,740	21,315,032
Academic Support	23,894,367	25,413,636	24,855,928	21,731,295	22,489,903	22,866,432
Student Services	6,205,098	7,280,432	8,210,073	9,005,372	9,636,281	10,430,540
Institutional Support	26,713,928	23,535,960	29,683,285	26,441,182	26,066,570	27,210,997
Operation and Maintenance of Plant	20,177,365	21,884,211	20,441,078	21,423,526	21,166,860	22,201,764
Scholarships and Fellowships	6,760,209	7,150,385	6,470,804	4,983,383	3,381,347	6,202,848
Depreciation	14,461,097	15,270,614	16,105,032	16,095,251	18,040,748	18,095,313
Other Operating Expenses	172,245	137,397	288,141	281,264	193,945	150,187
Auxiliary Enterprises	48,447,239	48,858,614	50,787,350	50,975,515	50,774,324	51,743,111
Total Operating Expenses	\$252,004,210	\$256,604,278	\$262,238,077	\$261,165,459	\$266,290,849	\$269,928,901
Operating (Loss)	(93,671,044)	(97,009,827)	(100,258,820)	(109,607,043)	(115,639,957)	(117,121,655)

Continued on next page

Statement of Revenues, Expenses and Changes In Net Position 2010 - 2015* (continued)

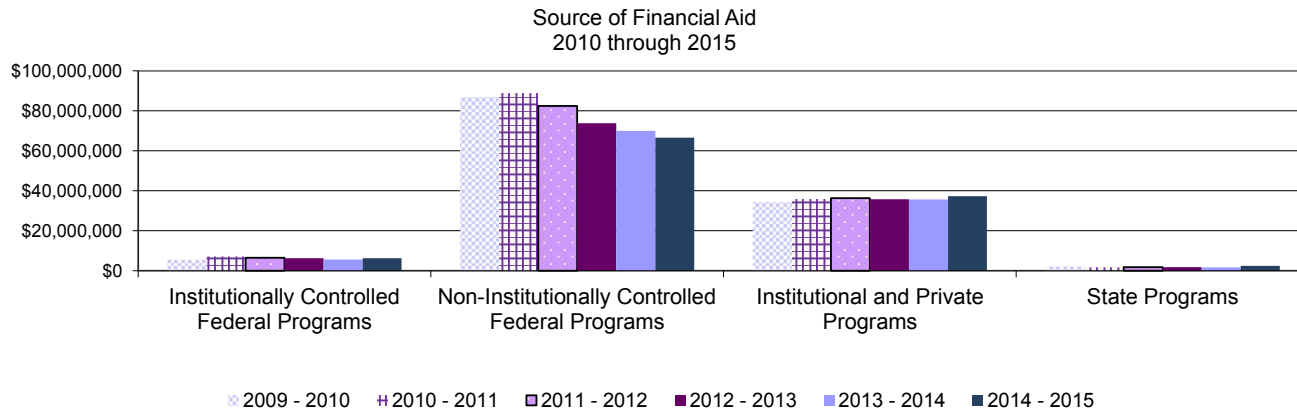
	2010	2011	2012	2013	2014	2015
NON-OPERATING REVENUES (EXPENSES)						
State Appropriations	\$ 97,861,782	\$ 82,683,919	\$ 77,765,014	\$ 87,662,815	\$ 96,910,269	\$ 100,659,338
Federal Grants and Contracts	10,913,391	12,213,433	11,466,659	10,860,223	10,270,339	10,714,971
Nonfederal Gifts, Grants and Contracts	3,332,794	3,179,412	3,701,740	3,101,932	3,827,149	2,010,489
Investment Income	2,762,824	2,785,806	1,683,261	1,464,982	3,644,079	1,658,231
Interest on Indebtedness	(6,274,646)	(5,924,235)	(6,258,688)	(5,529,028)	(5,463,353)	(5,890,651)
Miscellaneous Expense	(6,850)	-	(118,360)	(2,381,912)	(2,428,923)	(368,366)
Net Non-Operating Revenue	<u>\$108,589,295</u>	<u>\$94,938,335</u>	<u>\$88,239,626</u>	<u>\$95,179,012</u>	<u>\$106,759,560</u>	<u>\$108,784,012</u>
 (Loss) Before Other Revenues	 \$ 14,918,251	 \$ (2,071,492)	 \$ (12,019,194)	 \$ (14,428,031)	 \$ (8,880,397)	 \$ (8,337,643)
 Capital Appropriations	 \$5,927,801	 \$5,808,082	 \$7,016,578	 \$14,082,733	 \$14,177,141	 \$8,121,169
Capital Gifts, Grants and Contracts	5,164,996	3,412,442	1,913,243	1,193,696	3,232,154	1,832,059
Total Other Revenues	<u>\$11,092,797</u>	<u>\$9,220,524</u>	<u>\$8,929,821</u>	<u>\$15,276,429</u>	<u>\$17,409,295</u>	<u>\$9,953,228</u>
 Change in Net Position	 \$ 26,011,048	 \$ 7,149,032	 \$ (3,089,373)	 \$ 848,398	 \$ 8,528,898	 \$ 1,615,585
NET POSITION						
Total Net Position – July 1 Restated	<u>\$296,002,467</u>	<u>\$322,013,515</u>	<u>\$329,162,547</u>	<u>\$326,073,174</u>	<u>\$326,921,572</u>	<u>\$325,165,074</u>
Total Net Position – June 30	<u><u>\$322,013,515</u></u>	<u><u>\$329,162,547</u></u>	<u><u>\$326,073,174</u></u>	<u><u>\$326,921,572</u></u>	<u><u>\$335,450,470</u></u>	<u><u>\$326,780,659</u></u>

Source: *Financial Accounting and Reporting Services*

*Fiscal year runs July 1 through June 30

Financial Aid Programs by Source of Aid 2009 - 2010 to 2014 - 2015

	2009 - 2010	2010 - 2011	2011 - 2012	2012 - 2013	2013 - 2014	2014 - 2015	5 Year % Change
TOTAL	\$128,829,476	\$133,627,082	\$127,078,624	\$117,518,136	\$112,826,725	\$112,525,868	-3.6%
Institutionally Controlled Federal Programs	\$5,480,750	\$7,181,829	\$6,519,982	\$6,266,832	\$5,596,097	\$6,233,939	-23.7%
Non-Institutionally Controlled Federal Programs	\$86,925,180	\$88,875,504	\$82,439,618	\$73,783,596	\$69,903,959	\$66,618,122	-2.2%
Institutional and Private Programs	\$34,287,847	\$35,871,303	\$36,323,315	\$35,737,813	\$35,632,554	\$37,246,405	-4.4%
State Programs	\$2,135,699	\$1,698,446	\$1,795,709	\$1,729,895	\$1,694,115	\$2,427,402	25.7%



Source: Financial Aid Office

Student Financial Aid Programs 2012 - 2013 to 2014 - 2015

	2012 - 2013			2013 - 2014			2014 - 2015		
	Number of Awards	Value of Awards	Mean Award	Number of Awards	Value of Awards	Mean Award	Number of Awards	Value of Awards	Mean Award
TOTAL	39,109	\$117,515,136	\$3,005	36,503	\$112,826,725	\$3,091	39,296	\$112,525,868	\$2,864
Institutional & Private Gift Aid	12,745	\$ 21,797,657	\$1,710	12,453	\$ 21,860,724	\$1,755	14,223	\$ 22,823,143	\$1,605
Institutional Scholarships/Grants	8,127	13,081,900	\$1,610	7,529	12,780,359	\$1,697	8,249	12,456,621	\$1,510
Corporate/Private Scholarships	4,314	5,427,306	\$1,258	4,605	5,675,040	\$1,232	5,662	6,872,951	\$1,214
Athletic Scholarships	304	3,288,451	\$10,817	319	3,405,325	\$10,675	312	3,493,571	\$11,197
Federal & State Grants	5,343	\$ 16,510,080	\$3,090	5,331	\$ 15,527,090	\$2,913	5,730	\$ 16,957,685	\$2,959
Federal Pell Grant	3,022	10,867,166	\$3,596	2,807	10,250,573	\$3,652	2,850	10,697,581	\$3,754
Supplemental Education Opportunity Grant	473	433,623	\$917	529	489,402	\$925	492	461,066	\$937
TEACH Grant	624	2,280,838	\$3,655	566	1,718,098	\$3,036	541	1,727,315	\$3,193
ROTC	5	47,409	\$9,482	13	87,192	\$6,707	14	111,576	\$7,970
Other Federal Grant/Scholarship Programs	440	1,151,149	\$2,616	666	1,287,711	\$1,934	842	1,532,745	\$1,820
All Iowa Opportunity Scholarship	43	302,975	\$7,046	27	189,314	\$7,012	51	365,820	\$7,173
IMAGES Grant	197	332,200	\$1,686	197	332,200	\$1,686	197	332,200	\$1,686
Iowa Grant	110	88,877	\$808	94	88,432	\$941	111	89,726	\$808
Vocational Rehabilitation	143	334,376	\$2,338	140	341,533	\$2,440	144	458,247	\$3,182
Commission for the Blind	3	20,758	\$6,919	3	27,603	\$9,201	3	19,662	\$6,554
National Guard	92	490,474	\$5,331	92	471,058	\$5,120	96	503,762	\$5,248
Other State Grants	191	160,235	\$839	197	243,974	\$1,238	389	657,985	\$1,691
Loans	16,471	\$ 67,869,840	\$4,121	14,405	\$ 64,608,323	\$4,485	14,959	\$ 61,221,728	\$4,093
Federal Perkins	943	1,670,957	\$1,772	806	1,416,435	\$1,757	1,052	1,810,025	\$1,721
Direct Loans	14,965	62,792,219	\$4,196	13,091	59,538,766	\$4,548	13,342	55,770,767	\$4,180
Alternative Loans	563	3,406,664	\$6,051	508	3,653,122	\$7,191	565	3,640,936	\$6,444
Employment	4,550	\$ 11,337,559	\$2,492	4,314	\$ 10,830,588	\$2,511	4,384	\$ 11,523,312	\$2,628
Federal Work Study	465	679,876	\$1,462	418	628,607	\$1,504	451	659,036	\$1,461
Graduate Teaching, Research Assistantships	359	2,384,267	\$6,641	352	2,356,614	\$6,695	333	2,398,862	\$7,204
UNI Employment	3,726	8,273,416	\$2,220	3,544	7,845,367	\$2,214	3,600	8,465,414	\$2,352

Source: Financial Aid Office

Full-Time Undergraduate Student Tuition and Fees 1997 - 2016*

Academic Year	Academic Services	Activity	Athletics	Computing/Technology	Facilities	General Student Services	Health Services	Health Facility	Surcharge	Total Mandatory Fees	UG Tuition	Total Tuition & Mandatory Fees
1996-97				\$92			\$88			\$180	\$2,470	\$2,650
1997-98				\$96			\$90			\$186	\$2,566	\$2,752
1998-99				\$100			\$94			\$194	\$2,666	\$2,860
1999-00				\$104			\$98			\$202	\$2,786	\$2,988
2000-01				\$122			\$102			\$224	\$2,906	\$3,130
2001-02		\$92		\$126			\$106			\$324	\$3,116	\$3,440
2002-03		\$174		\$140			\$112			\$426	\$3,692	\$4,118
2003-04				\$150	\$180	\$102	\$116	\$26		\$574	\$4,342	\$4,916
2004-05				\$165	\$180	\$190	\$124	\$26		\$685	\$4,702	\$5,387
2005-06				\$116	\$198	\$222	\$144	\$32		\$712	\$4,890	\$5,602
2006-07				\$178	\$232	\$231	\$152	\$33	\$200	\$1,026	\$5,086	\$6,112
2007-08				\$187	\$237	\$223	\$158	\$33		\$838	\$5,352	\$6,190
2008-09				\$193	\$237	\$227	\$162	\$33		\$852	\$5,524	\$6,376
2009-10		\$35		\$200	\$235	\$215	\$166	\$29	\$100	\$980	\$5,756	\$6,736
2010-11		\$45		\$212	\$235	\$213	\$172	\$29		\$906	\$6,102	\$7,008
2011-12		\$60		\$229	\$235	\$213	\$176	\$29		\$942	\$6,408	\$7,350
2012-13		\$65		\$252	\$235	\$217	\$189	\$29		\$987	\$6,648	\$7,635
2013-14		\$67		\$258	\$220	\$258	\$203	\$31		\$1,037	\$6,648	\$7,685
2014-15		\$68		\$270	\$224	\$295	\$213	\$31		\$1,101	\$6,648	\$7,749
2015-16		\$71		\$290	\$229	\$320	\$228	\$31		\$1,169	\$6,648	\$7,817

Source: *Institutional Research & Effectiveness* via <http://www.uni.edu/tuition/2015-2016-undergraduate-tuition-fees>

*All Non-College of Business Administration resident students

Full-Time Graduate Student Tuition and Fees 1997 - 2016*

Academic Year	Academic Services	Activity	Athletics	Computing/ Technology	Facilities	General Student Services	Health Services	Health Facility	Surcharge	Total Mandatory Fees	Grad Tuition	Total Tuition & Mandatory Fees
1996-97				\$92			\$88			\$180	\$2,932	\$3,112
1997-98				\$96			\$90			\$186	\$3,046	\$3,232
1998-99				\$100			\$94			\$194	\$3,166	\$3,360
1999-00				\$104			\$98			\$202	\$3,308	\$3,510
2000-01				\$122			\$102			\$224	\$3,452	\$3,676
2001-02		\$92		\$126			\$106			\$324	\$3,702	\$4,026
2002-03		\$174		\$140			\$112			\$426	\$4,388	\$4,814
2003-04				\$150	\$180	\$102	\$116	\$26		\$574	\$5,038	\$5,612
2004-05				\$165	\$180	\$190	\$124	\$26		\$685	\$5,488	\$6,173
2005-06				\$116	\$198	\$222	\$144	\$32		\$712	\$5,708	\$6,420
2006-07				\$178	\$232	\$231	\$152	\$33	\$200	\$1,026	\$5,936	\$6,962
2007-08				\$187	\$237	\$223	\$158	\$33		\$838	\$6,246	\$7,084
2008-09				\$193	\$237	\$227	\$162	\$33		\$852	\$6,446	\$7,298
2009-10		\$35		\$200	\$235	\$215	\$166	\$29	\$100	\$980	\$6,716	\$7,696
2010-11		\$45		\$212	\$235	\$213	\$172	\$29		\$906	\$7,120	\$8,026
2011-12		\$60		\$229	\$235	\$213	\$176	\$29		\$942	\$7,476	\$8,418
2012-13		\$65		\$252	\$235	\$217	\$189	\$29		\$987	\$7,756	\$8,743
2013-14		\$67		\$258	\$220	\$258	\$203	\$31		\$1,037	\$7,756	\$8,793
2014-15		\$68		\$270	\$224	\$295	\$213	\$31		\$1,101	\$7,912	\$9,013
2015-16		\$71		\$290	\$229	\$320	\$228	\$31		\$1,169	\$8,050	\$9,219

Source: *Institutional Research & Effectiveness* via <http://www.uni.edu/tuition/2015-2016-graduate-tuition-fees>

*Resident student

Sponsored Project Proposals and Awards 2003 - 2015

Fiscal Year	Proposals (P)		Awards (A)	
	N	Amount (\$)	N	Amount (\$)
2002 - 2003	231	40,056,854	177	28,835,568
2003 - 2004	288	37,183,501	202	22,226,432
2004 - 2005	257	44,271,909	207	32,203,943
2005 - 2006	296	47,263,423	222	33,071,632
2006 - 2007	280	41,819,467	222	27,003,729
2007 - 2008	352	42,777,178	273	37,101,834
2008 - 2009	273	56,854,498	227	45,767,242
2009 - 2010	365	53,717,963	254	39,754,021
2010 - 2011	353	56,922,612	250	42,018,391
2011 - 2012	227	42,435,603	185	38,326,824
2012 - 2013*	220	46,942,575	156	41,181,950
2013 - 2014	192	40,216,946	145	40,830,739
2014 - 2015	190	39,917,144	143	38,862,509

Highlights from the 2015 funding:

68 new awards in FY15 with an average new award size of nearly \$60,000.

\$15 million in sponsored funding was directed at outreach projects that impacted people, communities, and environments throughout Iowa.

\$20 million in sponsored funding supported student financial aid and strengthened academic programming at UNI.

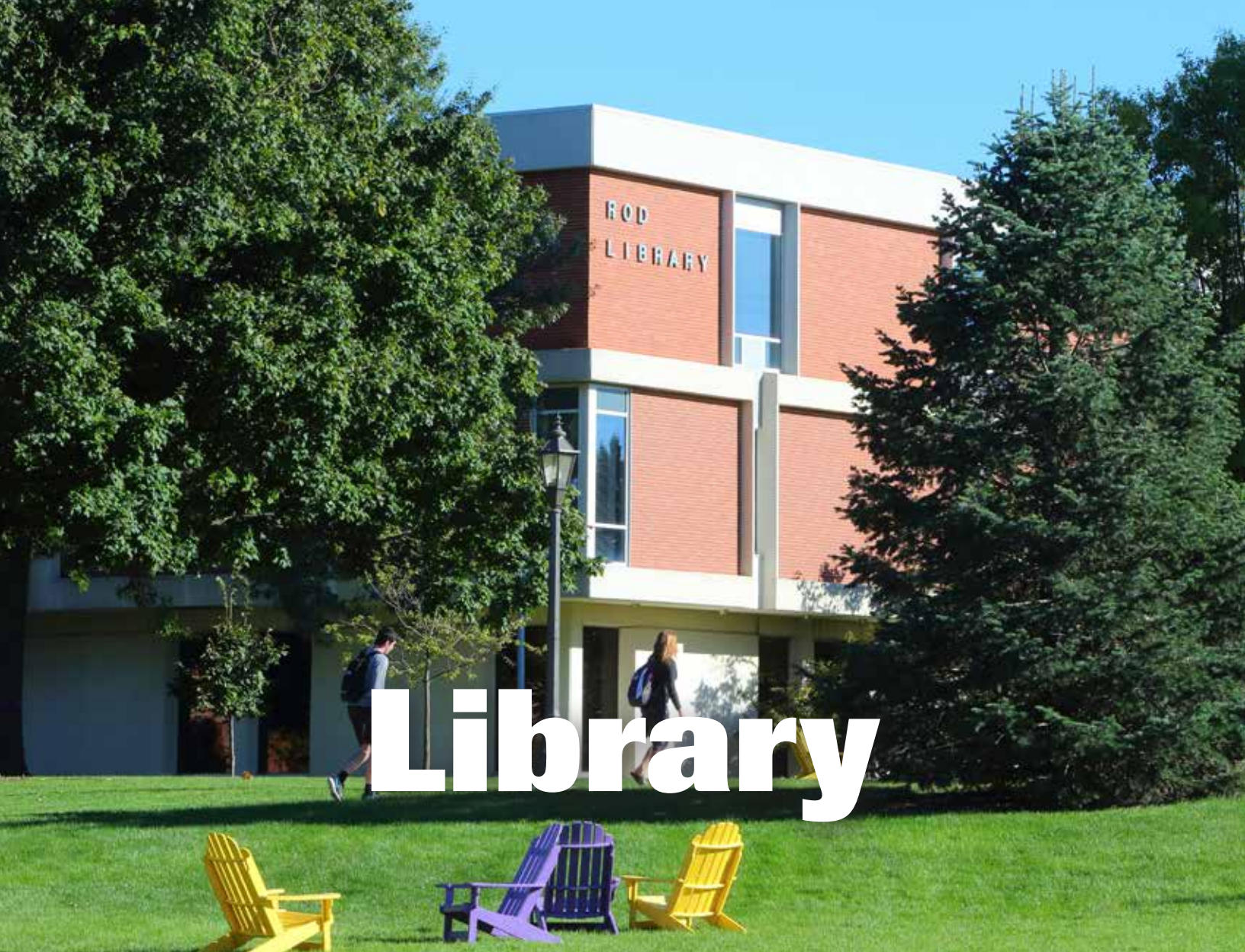
\$9.9 million in sponsored funding was directed to projects that supported Pre-K through 12th grade education.

\$2.5 million in foundation supported research.

\$2.7 million in funding for research.



Library



ROD
LIBRARY

Library

Library Statistics 2010 - 2015

	2010	2011	2012	2013	2014	2015
PERSONNEL – FTE						
Library Faculty	19	19	20	18	20	17
Library Associates	11	11	11	11	10	12
Library Staff	24	24	21	20	21	19
Student Assistants (FTE)	18	17	16	16	16	17
HOLDINGS/ACCESS						
Books	800,239	797,883	799,353	784,462	776,179	780,940
Periodicals	176,076	175,348	176,824	176,236	170,491	166,675
Electronic Books	46,304	77,877	14,245	205,638	262,564	211,207
Electronic Journals	44,350	52,924	50,909	59,434	65,717	63,618
Maps (sheets and folded)	41,425	41,438	41,567	40,949	40,957	40,966
Maps (electronic)					2,799	2,840
Government Documents (all)						
Paper	262,832	252,048	230,393	202,254	189,467	172,467
Microform	303,508	303,085	302,709	301,405	300,610	300,719
CD/DVD/Floppy	3,416	3,425	3,430	2,416	544	500
Subscriptions						
Periodicals (paper - with newspapers)	1,534	1,494	1,237	1,188	1,188	813
Periodicals (electronic - with newspapers)	1,527	1,590	1,198	1,114	1,114	1,285
Databases	140	96	123	151	184	185
Audiovisuals						
Sound Recordings	17,330	17,923	18,155	18,516	19,289	19,998
Films and Videotapes	6,864	7,954	8,393	9,116	8,217	8,593
Other Nonprint Materials	9,583	9,583	3,634	2,946	2,853	3,267

Continued on next page

Library Statistics 2010 - 2015 (continued)

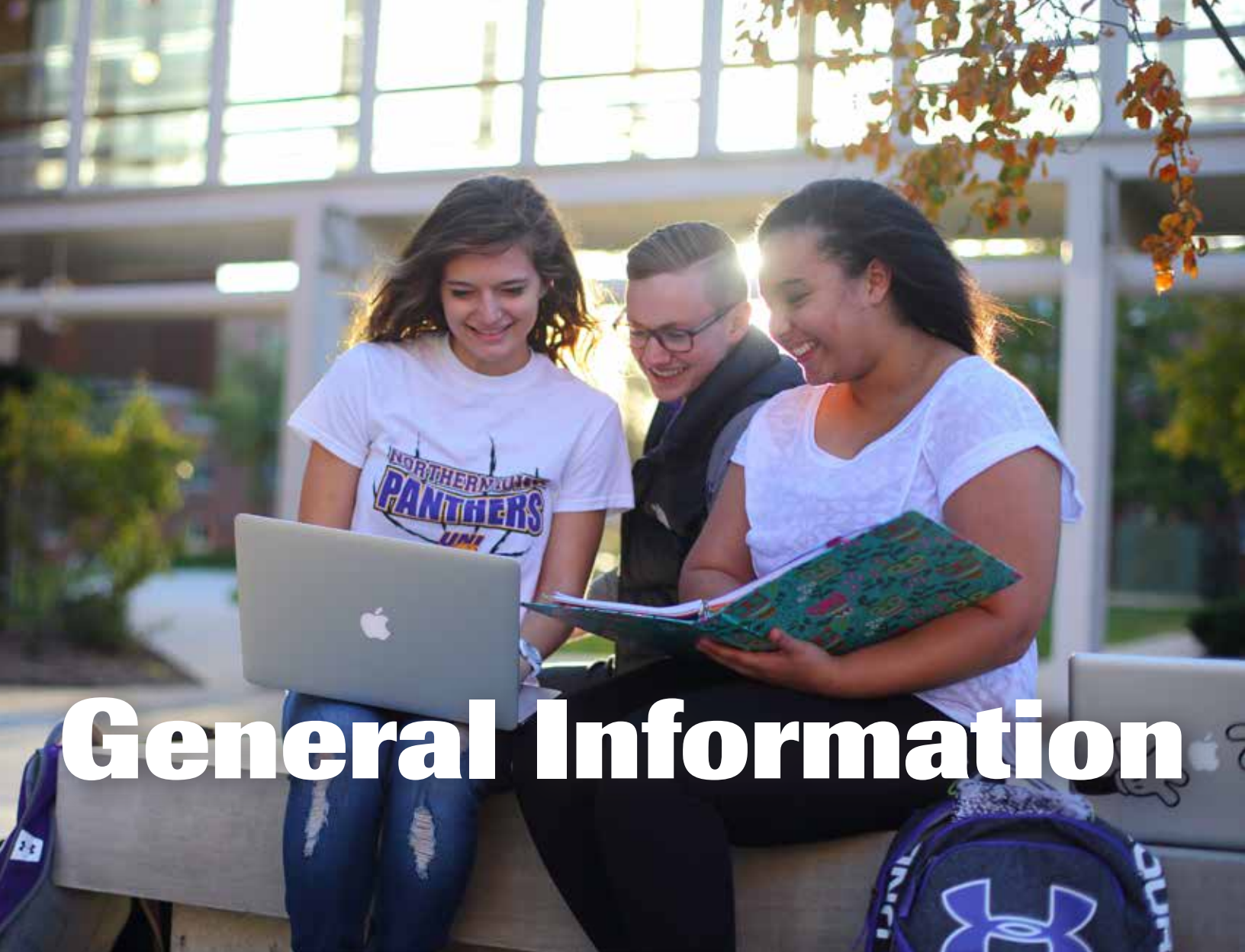
	2010	2011	2012	2013	2014	2015
Microform Units (not government documents)						
Microfilm	29,917	29,799	29,975	30,133	30,007	30,141
Microfiche	774,574	774,279	774,726	775,198	774,908	774,907
Microcards	17,076	17,076	17,076	17,076	14,076	17,076
Archives & Manuscripts (linear feet)	5,114	5,265	5,329	5,616	5,616	5,994
SERVICES						
Building Entrance Count	487,375	495,971	519,307	446,840	408,445	490,323
Circulation (first time loans)	161,881	140,130	134,571	104,980	85,307	85,421
Reference Transactions (all)	12,433	12,217	12,994	10,916	9,455	6,677
Interlibrary Loan						
Borrowed	5,055	4,357	3,847	3,691	3,555	4,352
Loaned	6,399	5,663	5,203	4,806	4,994	5,111
Library Instruction						
Classes	295	300	336	316	390	458
Persons Served	6,128	6,746	6,400	5,725	7,098	7,851
Document Delivery						
On Campus	*	*	*	*	13	3
Off Campus	573	377	649	498	236	307

Source: *The Rod Library*

*Statistic not captured



General Information



General Information

International Students by Country Fall 2015*

Country	N	Country	N	Country	N	Country	N
Australia	3	France	3	Myanmar	2	Turkey	1
Bangladesh	7	Georgia	1	Namibia	1	Uganda	1
Belgium	1	Germany	1	Nepal	11	Ukraine	2
Brazil	38	Ghana	3	Netherlands	2	United Kingdom	3
Brunei Darussalam	1	Hong Kong	13	Nigeria	3	Venezuela	3
Cameroon	2	India	25	Norway	1	Vietnam	7
Canada	12	Indonesia	4	Oman	4	Zambia	1
Chile	1	Iran	3	Pakistan	10	Zimbabwe	1
China	144	Iraq	1	Peru	2		
Colombia	5	Japan	12	Russia	4		
Congo	2	Jordan	2	Rwanda	1		
Costa Rica	1	Kazakhstan	1	Saudi Arabia	211		
Cyprus	1	Kenya	4	Sierra Leone	1		
Denmark	1	Kuwait	2	South Africa	1		
Dominican Republic	1	Latvia	3	South Korea	6		
Ecuador	1	Malawi	1	Spain	3		
Egypt	2	Malaysia	15	Sweden	1		
El Salvador	1	Mali	1	Taiwan	1		
Ethiopia	5	Mexico	7	Thailand	1		
						TOTAL	616
						Number of Countries	65

Source: Office of the Registrar

*Includes undergraduates and graduates

International Students by College 2009 - 2015*

College	2009	2010	2011	2012	2013	2014	2015	1 Yr % Change	5 Yr % Change
TOTAL	453	480	488	454	520	626	616		
Annual Percent Change	-2.4	6.0	1.7	-7.0	6.6	37.9	18.5	-1.6	28.3
Business Administration	143	154	167	163	192	215	223	3.7	44.8
Education	29	29	35	43	58	63	62	-1.6	113.8
Humanities, Arts and Sciences	-	-	178	145	152	172	184	7.0	--
Social and Behavioral Sciences	18	26	18	25	32	37	43	16.2	65.4
No Specific College	90	113	90	78	86	139	104	-25.2	-8.0

Source: *Office of the Registrar*

*Includes undergraduates and graduates

Top 5 Countries of Origin for International Students 2004 - 2015

Fall	Country	N	Country	N	Country	N	Country	N	Country	N	Total International Students
2004	Russia	50	Japan	34	India	21	Peru	16	PR China South Korea	15 15	351
2005	Russia	61	Hong Kong	33	Japan Saudi Arabia	30 30	South Korea	26	India	23	422
2006	Saudi Arabia	70	Russia	51	Hong Kong	37	China	28	India	23	432
2007	Saudi Arabia	72	Russia	50	China	43	India	38	Hong Kong	24	472
2008	China	82	Saudi Arabia	71	Hong Kong	45	India	37	Russia	34	464
2009	Saudi Arabia	106	China	85	India	35	Russia	26	Hong Kong	17	453
2010	Saudi Arabia	146	China	100	India	27	Russia	23	South Korea	16	480
2011	Saudi Arabia	180	China	89	Russia	24	India	21	Hong Kong	18	488
2012	Saudi Arabia	163	China	88	India	21	Russia	16	Hong Kong	15	454
2013	Saudi Arabia	183	China	127	Hong Kong	19	India	19	Japan	14	520
2014	Saudi Arabia	197	China	138	Brazil	63	India	22	Hong Kong Japan	16 16	626
2015	Saudi Arabia	211	China	144	Brazil	38	India	25	Malaysia	15	616

Study Abroad Destinations Fall 2014/Spring 2015/Summer 2015*

Country	N	Country	N	Country	N
Argentina	1	Guatemala	13	Nicaragua	18
Australia	3	Hungary	22	Romania	21
Austria	3	India	6	Russia	1
Brazil	1	Indonesia	1	Scotland	4
Chile	13	Ireland	77	South Africa	20
China	16	Italy	58	South Korea	5
Costa Rica	9	Jamaica	1	Spain	16
Denmark	1	Japan	6	Taiwan	3
England	104	Kenya	1	Tanzania	10
France	32	Liberia	1	Turkey	1
Germany	15	Mexico	1	Wales	2
Greece	40	New Zealand	22		
				Total	548
				Number of Countries	35

Source: *Study Abroad Center*

*Includes undergraduates and graduates

Considered students traveling to multiple countries

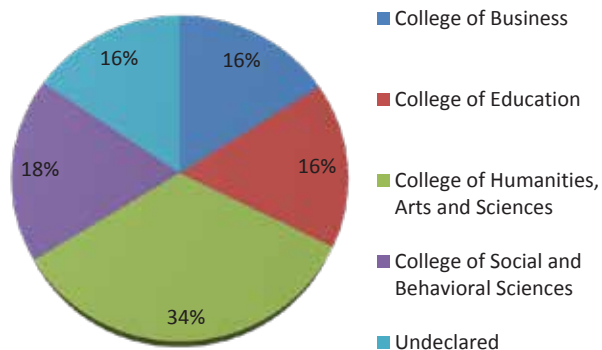
Does not consider Camp Adventure, International Student Teaching, Athletics nor School of Music

UNI Study Abroad Students by College and Classification Fall 2014/Spring 2015/Summer 2015*

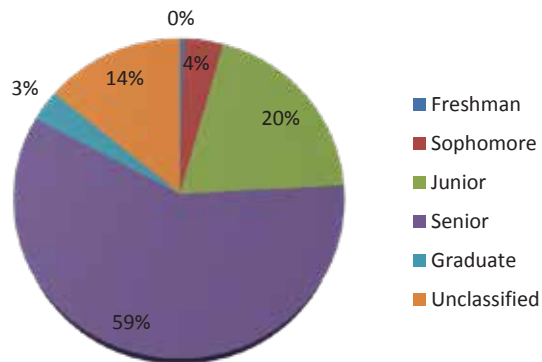
College	N
College of Business	66
College of Education	68
College of Humanities, Arts and Sciences	140
College of Social and Behavioral Sciences	76
Undeclared	64
Total	414

Classification	N
Freshman	2
Sophomore	16
Junior	82
Senior	243
Graduate	13
Unclassified	58
Total	414

Students by College



Students by Classification



Source: Study Abroad Center

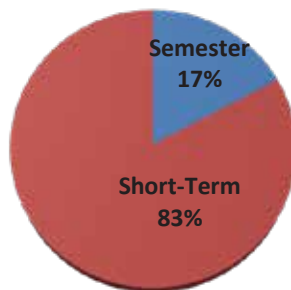
*Includes undergraduates and graduates

Does not consider Camp Adventure, International Student Teaching, Athletics nor School of Music

UNI Study Abroad Students by Term*

Type of Program	Fall 2014	Spring 2015	Summer 2015	Total
Semester	33	38		71
Short-Term	18	13	312	343
Total				414

Students by Type of Program



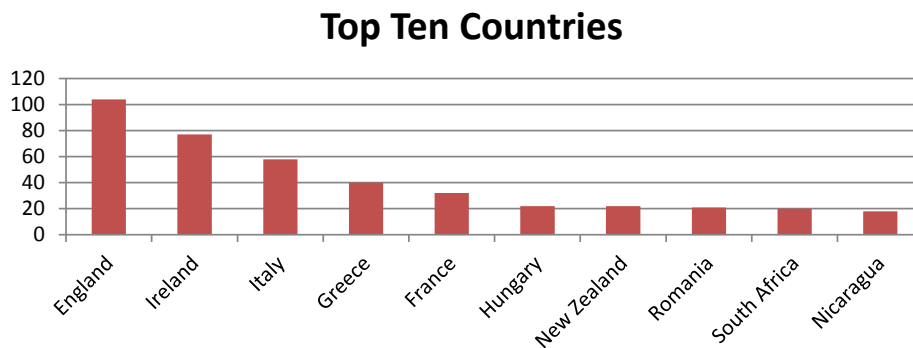
Source: Study Abroad Center

*Includes undergraduates and graduates

Does not consider Camp Adventure, International Student Teaching, Athletics nor School of Music

UNI Study Abroad Top Ten Countries Fall 2014/Spring 2015/Summer 2015

Top 10 Countries	N
England	104
Ireland	77
Italy	58
Greece	40
France	32
Hungary	22
New Zealand	22
Romania	21
South Africa	20
Nicaragua	18
Total	414

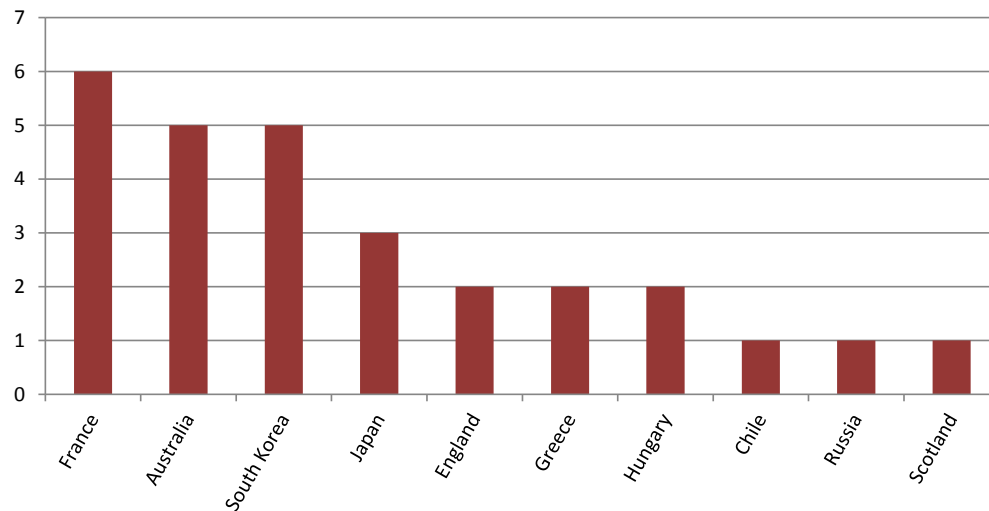


Source: Study Abroad Center

Does not consider Camp Adventure, International Student Teaching, Athletics nor School of Music

Incoming International Exchange Students by Country Fall 2014/Spring 2015/Summer 2015*

Country	N
France	6
Australia	5
South Korea	5
Japan	3
England	2
Greece	2
Hungary	2
Chile	1
Russia	1
Scotland	1



Total 28
Number of Countries 10

Source: Study Abroad Center

*Includes undergraduates and graduates

Does not consider Camp Adventure, International Student Teaching, Athletics nor School of Music

UNI Students Studying Abroad by Region*

Region: Fall 2002 - Fall 2015	N	Region: Fall 2014/Spring 2015/Summer 2015	N
Europe	2,656	Europe	261
Asia	604	Asia	39
Central America	507	Central America	40
South America	331	South America	15
Africa	153	Africa	32
Oceania	223	Oceania	25
Caribbean	2	Caribbean	1
Middle East	0	Middle East	0
North America	5	North America	1
Total	4,481	Total	414

Source: *Study Abroad Center*

*Includes undergraduates and graduates

Does not consider Camp Adventure, International Student Teaching, Athletics nor School of Music

Top 5 Countries for UNI Study Abroad Students FY 2003 - FY 2015*

FY	Country	Top 1	Country	Top 2	Country	Top 3	Country	Top 4	Country	Top 5
2002-2003	Spain	36	Mexico	32	Poland	26	Australia	20	Russia	16
2003-2004	France	53	Australia	33	Spain	28	Mexico	22	Russia	15
2004-2005	France	64	Spain	54	Mexico	35	Russia	25	Chile	20
2005-2006	Spain	59	China	40	Mexico	31	Australia	24	Russia	24
2006-2007	France	72	Spain	70	Mexico	36	Nicaragua	32	England	27
2007-2008	Nicaragua	52	Spain	46	England	43	France	32	Mexico	32
2008-2009	England	61	Greece	54	Nicaragua	52	Spain	52	Ireland	31
2009-2010	England	98	Italy	92	Spain	67	Ireland	62	France	54
2010-2011	Germany	302	Japan	145	Italy	119	England	112	Ireland	72
2011-2012	Germany	255	Japan	147	England	106	Italy	98	Ireland	63
2012-2013	Germany	235	Japan	140	England	131	Italy	98	France	75
2013-2014	England	155	Ireland	109	Italy	69	France	67	Greece	50
2014-2015	England	104	Ireland	77	Italy	58	Greece	40	France	32

Source: *Study Abroad Center*

*Includes undergraduates and graduates

For multiple destinations in one program, total count was included for all countries

Does not consider Camp Adventure, International Student Teaching, Athletics nor School of Music

UNI Services to Businesses, Communities and Local Government

Divisions	Location	Telephone	Website
Center for Energy and Environmental Education	Cedar Falls, IA	319-273-2573	www.uni.edu/ceee/
Geoinformatics Training, Research, Education and Extension	Cedar Falls, IA	319-273-3877	www.geotree.uni.edu/en/
Heartland Economic Development Course	Cedar Falls, IA	319-273-6941	www.bcs.uni.edu/heartland/
Institute for Decision Making	Cedar Falls, IA	319-273-6069	www.idm.uni.edu
Iowa Waste Reduction Center	Cedar Falls, IA	319-273-8905	https://theiwrc.org
John Pappajohn Entrepreneurial Center	Cedar Falls, IA	319-273-5732	www.jpec.org/
Materials Innovation Service	Cedar Falls, IA	319-273-3689	www.rttc.com
New Iowans Center	Cedar Falls, IA	319-273-3029	www.bcs.uni.edu/icili/
Recycling and Reuse Technology Transfer	Cedar Falls, IA	319-273-7499	www.uni.edu/chas/academics/RRTTC
Center for Business Growth and Innovation	Cedar Falls, IA	319-273-4344	www.uni.edu/cbgi/
Strategic Marketing Services	Cedar Falls, IA	319-273-2886	www.sms.uni.edu
Sustainable Tourism and Environmental Program	Cedar Falls, IA	319-273-6840	www.uni.edu/step/
Tallgrass Prairie Center	Cedar Falls, IA	319-273-3836	www.tallgrassprairiecenter.org
UNI Metal Casting Center	Cedar Falls, IA	319-273-2311	www.mcc.uni.edu

Source: *Business and Community Services*

UNI Carnegie Classification

Classification:

Basic

Size and Setting

Enrollment Profile

Undergraduate Profile

Undergraduate Instructional Program

Graduate Instructional Program

Category:

M1: Master's Colleges & Universities: Larger Programs

Four-year, large, highly residential

High undergraduate

Four-year, full-time, selective, higher transfer-in

Professions plus arts & sciences, some graduate coexistence

Postbaccalaureate: Comprehensive programs

This institution participated in the following elective classification:

Community Engagement

Curricular Engagement and Outreach and Partnerships

Level

4-year or above

Control

Public

Enrollment (Fall 2015)

11,981

Source: *The Carnegie Classification of Institutions of Higher Education* - classification based on data from 2014 - 2015

Notes:

Graduate program classification: based on fewer than 50 degrees.

Undergraduate program classification: percentage is within 5 points of a category border (arts & sciences direction).

Apparent inconsistencies between basic and instructional program classifications are due to degree thresholds used in the basic classification.

Iowa Economic Impact Profile

Item	Details
Discretionary Spending and Tourism	11,981 current students
Provide Higher Ed	<p>Approximately 88% of students are from Iowa</p> <p>Credit courses were offered in 97 counties and 513 cities and towns</p> <p>37 off-campus degree and certification programs were offered</p> <p>14,906 enrollment in Continuing and Distance Education Credit courses</p> <p>11,403 non-credit educational activities</p>
Business Services and Community Impact	<p>Total number community service hours engaged in by UNI students is 515,961 (2014-2015)</p> <p>UNI provided service in all 99 counties to nearly 2,800 unique business, community and local government clients; another 34,700 individuals were engaged in the MyEntre.Net/ IA SourceLink entrepreneurial support system. BCS has reached more than 233,000 Iowans through BCS programs and projects.</p>

Source: Business & Community Services, Community Engagement, Continuing Education, and Office of the President

A classroom scene featuring a teacher and students. The teacher, a woman with long red hair wearing a dark blue shirt and a name tag that reads "Miss McKeone", is leaning over a desk. Two students are seated at the desk, focused on their laptops. One student is a young Black woman with long braids wearing a black jacket, and the other is a young white woman with a blue headband. The background shows a classroom environment with a purple bulletin board displaying a calendar and various educational posters. The text "Peer Institutions" is overlaid in large white font across the bottom half of the image.

Peer Institutions



Peer Institutions

Undergraduate Enrollment and Costs 2014 - 2015

Institution	Location	UG	Student to Faculty Ratio	In State Tuition & Fees	Out of State Tuition & Fees
College of Charleston	Charleston, SC	10,440	15/1	\$22,308	\$39,298
Eastern Illinois University	Charleston, IL	7,640	14/1	\$20,466	\$37,446
Ferris State University	Big Rapids, MI	13,373	16/1	\$19,885	\$25,675
James Madison University	Harrisburg, VA	19,144	16/1	\$18,858	\$33,718
Marshall University	Huntington, WV	9,536	19/1	\$16,072	\$24,572
Southern Illinois University - Edwardsville	Edwardsville, IL	11,421	18/1	\$18,519	\$29,463
Truman State University	Kirksville, MO	5,910	17/1	\$15,541	\$21,605
University of Massachusetts - Dartmouth	North Dartmouth, MA	7,454	18/1	\$23,115	\$36,053
University of Minnesota - Duluth	Duluth, MN	9,987	18/1	\$19,806	\$23,471
University of Northern Iowa	Cedar Falls, IA	10,142	16/1	\$15,795	\$25,693
Western Washington University	Bellingham, WA	14,152	19/1	\$19,006	\$30,448

Source: *Integrated Postsecondary Education Data System (IPEDS)*

UG - Fall 2014 undergraduate enrollment

The cost refers to the total dollar amount of living on campus thus including room and board.

Faculty by Rank 2014 - 2015

Institution	Location	Professor	Associate Professor	Assistant Professor
College of Charleston	Charleston, SC	143	170	170
Eastern Illinois University	Charleston, IL	155	125	99
Ferris State University	Big Rapids, MI	180	131	145
James Madison University	Harrisburg, VA	296	271	287
Marshall University	Huntington, WV	247	211	227
Southern Illinois University - Edwardsville	Edwardsville, IL	128	202	169
Truman State University	Kirksville, MO	175	45	68
University of Massachusetts - Dartmouth	North Dartmouth, MA	116	105	82
University of Minnesota - Duluth	Duluth, MN	79	172	149
University of Northern Iowa	Cedar Falls, IA	151	189	134
Western Washington University	Bellingham, WA	182	182	111

Source: *Integrated Postsecondary Education Data System (IPEDS)*

2014-2015 Academic year full-time faculty on both 9/10 month and 11/12 month contract lengths.

Faculty Average Salaries by Rank 2013 - 2014

Institution	Location	Professor	Associate Professor	Assistant Professor	Instructor	All Ranks
College of Charleston	Charleston, SC	\$ 92,205	\$ 73,071	\$ 65,151	\$ 54,738	\$ 73,638
Eastern Illinois University	Charleston, IL	\$ 91,368	\$ 74,331	\$ 67,266	\$ 48,429	\$ 71,037
Ferris State University	Big Rapids, MI	\$ 94,248	\$ 76,005	\$ 65,871	\$ 73,674	\$ 73,548
James Madison University	Harrisburg, VA	\$ 89,217	\$ 69,741	\$ 64,458	\$ 44,190	\$ 71,937
Marshall University	Huntington, WV	\$ 77,490	\$ 66,420	\$ 60,570	\$ 35,262	\$ 64,053
Southern Illinois University - Edwardsville	Edwardsville, IL	\$ 92,313	\$ 77,679	\$ 64,926	\$ 43,407	\$ 70,794
Truman State University	Kirkville, MO	\$ 73,359	\$ 60,147	\$ 52,911	\$ 41,580	\$ 63,855
University of Massachusetts - Dartmouth	North Dartmouth, MA	\$ 118,377	\$ 91,071	\$ 80,793	N/A	\$ 92,349
University of Minnesota - Duluth	Duluth, MN	\$ 96,453	\$ 74,457	\$ 59,247	\$ 49,923	\$ 69,102
University of Northern Iowa	Cedar Falls, IA	\$ 90,072	\$ 71,874	\$ 63,171	\$ 61,974	\$ 73,215
Western Washington University	Bellingham, WA	\$ 94,671	\$ 75,942	\$ 66,771	\$ 47,817	\$ 75,375

Source: Integrated Postsecondary Education Data System (IPEDS)

2013 - 2014 Academic year full-time faculty

Undergraduates Receiving Student Financial Aid 2014 - 2015*

Institution	Location	Federal Grants**		State/Local Grants		Institutional Grants		Receiving Any Financial Aid
		N	\$	N	\$	N	\$	%
College of Charleston	Charleston, SC	430	\$ 4,476	1054	\$ 5,307	746	\$ 5,765	75%
Eastern Illinois University	Charleston, IL	541	\$ 4,304	557	\$ 4,210	744	\$ 2,638	93%
Ferris State University	Big Rapids, MI	956	\$ 4,775	645	\$ 5,740	1382	\$ 4,727	96%
James Madison University	Harrisburg, VA	561	\$ 4,309	379	\$ 4,977	687	\$ 5,559	60%
Marshall University	Huntington, WV	943	\$ 4,829	1078	\$ 4,527	1097	\$ 2,929	94%
Southern Illinois University - Edwardsville	Edwardsville, IL	760	\$ 4,701	601	\$ 3,294	643	\$ 2,815	86%
Truman State University	Kirkville, MO	299	\$ 4,257	746	\$ 1,797	1235	\$ 5,009	99%
University of Massachusetts - Dartmouth	North Dartmouth, MA	617	\$ 4,239	980	\$ 2,135	973	\$ 4,498	90%
University of Minnesota - Duluth	Duluth, MN	468	\$ 4,372	637	\$ 3,638	1133	\$ 3,197	83%
University of Northern Iowa	Cedar Falls, IA	506	\$ 4,152	101	\$ 4,271	987	\$ 3,129	87%
Western Washington University	Bellingham, WA	631	\$ 4,398	450	\$ 7,234	955	\$ 4,151	73%

Source: *Integrated Postsecondary Education Data System (IPEDS)*

*Full-time, first-time, degree/certificate-seeking undergraduate students receiving financial aid.

**Federal grant aid plus other federal grant aid (new in 2012-2013).

\$ = Average amount of aid received.

Retention and Graduation Rates Fall 2014 and 2015

Institution	Location	2014	2015
		Retention [*] %	Retention ^{**} %
College of Charleston	Charleston, SC	83	79
Eastern Illinois University	Charleston, IL	77	76
Ferris State University	Big Rapids, MI	77	72
James Madison University	Harrisburg, VA	92	92
Marshall University	Huntington, WV	69	73
Southern Illinois University - Edwardsville	Edwardsville, IL	69	73
Truman State University	Kirksville, MO	87	88
University of Massachusetts - Dartmouth	North Dartmouth, MA	76	79
University of Minnesota - Duluth	Duluth, MN	75	77
University of Northern Iowa	Cedar Falls, IA	83	85
Western Washington University	Bellingham, WA	83	83

Source: *Integrated Postsecondary Education Data System (IPEDS)*

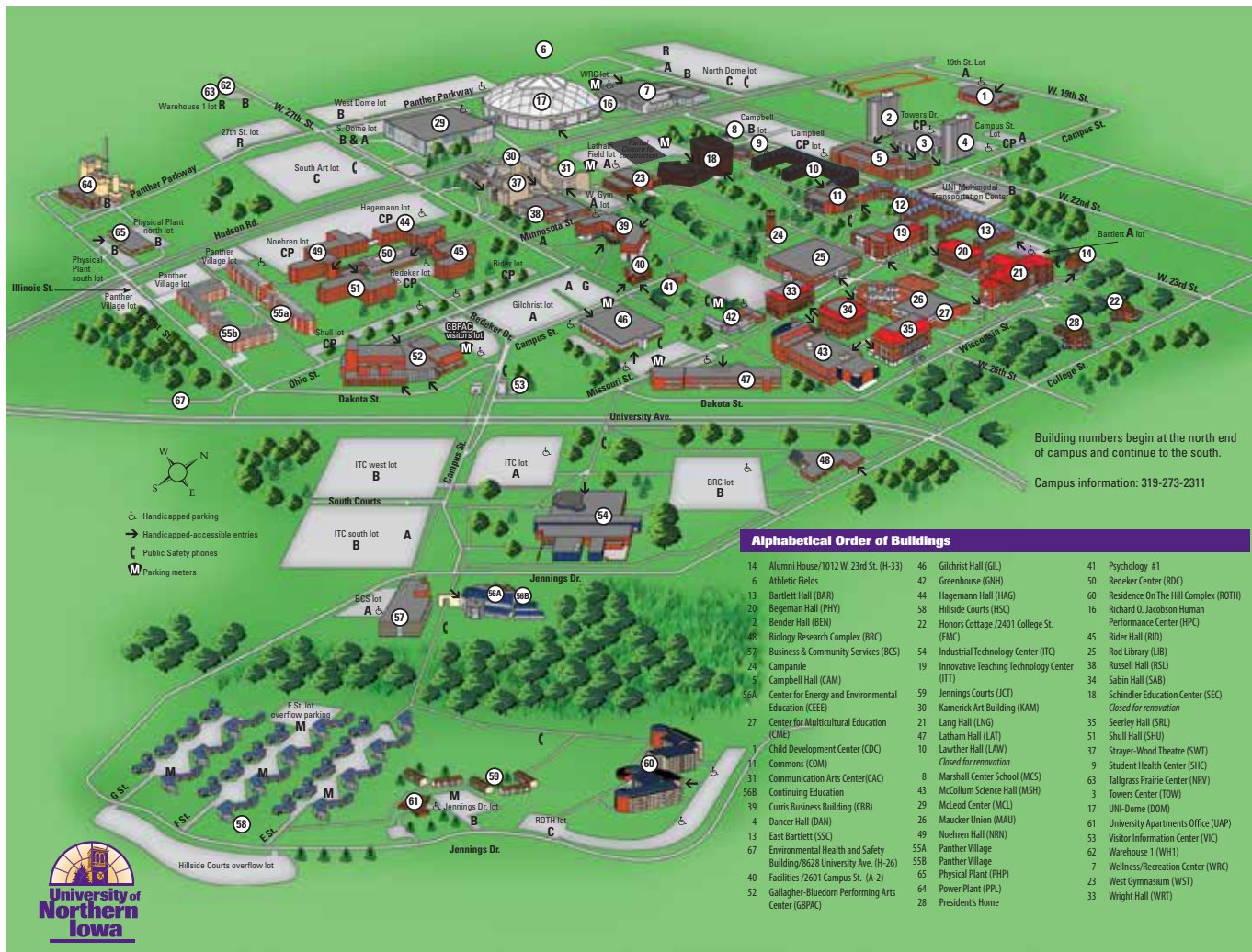
^{*}Full-time retention rate 2013-14 academic year

^{**}Full-time retention rate 2014-15 academic year

Degrees Granted in Academic Year 2014 - 2015

Institution	Location	Baccalaureate (Bachelor's)	Master's	Doctorates	Total
College of Charleston	Charleston, SC	2,126	249	N/A	2,375
Eastern Illinois University	Charleston, IL	2,108	585	N/A	2,693
Ferris State University	Big Rapids, MI	2,401	165	186	2,752
James Madison University	Harrisburg, VA	3,990	820	24	4,834
Marshall University	Huntington, WV	1,603	770	134	2,507
Southern Illinois University - Edwardsville	Edwardsville, IL	2,221	765	153	3,139
Truman State University	Kirksville, MO	1,211	178	N/A	1,389
University of Massachusetts - Dartmouth	North Dartmouth, MA	1,276	398	104	1,778
University of Minnesota - Duluth	Duluth, MN	1,941	205	2	2,148
University of Northern Iowa	Cedar Falls, IA	2,357	520	20	2,897
Western Washington University	Bellingham, WA	3,132	267	N/A	3,399

Source: Integrated Postsecondary Education Data System (IPEDS)





Institutional Research and Effectiveness

University of Northern Iowa | Cedar Falls, Iowa 50614-0005
319-273-3050