

2014

University of Northern Iowa Fact Book, 2014-2015

University of Northern Iowa

Let us know how access to this document benefits you

Copyright ©2014 University of Northern Iowa

Follow this and additional works at: https://scholarworks.uni.edu/ire_factbook



Part of the [Higher Education Commons](#)

Recommended Citation

University of Northern Iowa, "University of Northern Iowa Fact Book, 2014-2015" (2014). *University of Northern Iowa Fact Book*. 11.

https://scholarworks.uni.edu/ire_factbook/11

This Newsletter is brought to you for free and open access by the Institutional Effectiveness & Planning at UNI ScholarWorks. It has been accepted for inclusion in University of Northern Iowa Fact Book by an authorized administrator of UNI ScholarWorks. For more information, please contact scholarworks@uni.edu.

Offensive Materials Statement: Materials located in UNI ScholarWorks come from a broad range of sources and time periods. Some of these materials may contain offensive stereotypes, ideas, visuals, or language.



2014-2015 FACT BOOK

CIO's Office and Office of Institutional Research

The University of Northern Iowa provides transformative learning experiences that inspire students to embrace challenge, engage in critical inquiry and creative thought, and contribute to society.

Quick Reference

University President	William N. Ruud	Residence Hall Occupancy	4,088
Board of Regents President	Bruce L. Rastetter	Number of Financial Aid Awards	36,503
University Accreditation	North Central Association of Colleges and Schools (NCA)	Fall 2014 Employees	
		Faculty and Institutional Officers	675
Number of Colleges	4	Professional and Scientific	622
		General Service Staff	564
Number of Academic Departments	31	Total	1,861
Enrollment 2014 (Fall Headcount)		2014 Current Funds Revenues	\$326,134,307
Undergraduate	10,142	2013-14 Sponsored Funding Awarded	\$40,830,739
Graduate	1,786		
Total	11,928	Academic Year 2014-15 Tuition and Fees	
Enrollment 2014 (Fall FTE)		Undergraduate Resident	\$7,749.00
Undergraduate	9,119	Graduate Resident	\$9,013.00
Graduate	1,192	Undergraduate Nonresident	\$17,647.00
Total	10,311	Graduate Nonresident	\$19,007.00
2013-14 Degrees Awarded		Academic year 2014-15 Room & Board	\$8,066
Baccalaureate (Bachelor's)	2,357	Electronic Journals available in Library	65,717
Master's	512		
Specialist	8		
Doctorate	20		
Total	2,897	Location	Cedar Falls, IA
Total Living Alumni	111,241	Homepage Address	http://www.uni.edu
Student Financial Aid	\$112,826,725	Office of Enrollment Services Phone Number.....	800-772-2037
		For an electronic version of the fact book, visit our Web site at http://www.ir.uni.edu/dbWeb/	



FACT BOOK 2014-2015

CIO's Office and Office of Institutional Research

University of Northern Iowa
Cedar Falls, IA 50614-0005

Table of Contents

Quick Reference.....	Inside front cover
Mission Statement.....	1
UNI Organizational Chart.....	2
UNI Administration.....	3
Definitions of Terms Used.....	4
Calendar.....	6

New Students

Fall 2014 New Students.....	7
New Student Applications, Admissions, and Enrolled 2003-2014.....	8
New Students Enrolled by Residence 2003-2014.....	9
New Freshmen Enrollment by Residence 2008-2014.....	10
New Undergraduate Transfer Students by Type of Transfer College.....	11
New Freshmen ACT Composite Scores and High School Class Rank.....	12

Enrollment

Fall 2014 Students Profile by College.....	13
Headcount Enrollment 2003-2014.....	14
Headcount Enrollment by Level.....	15
Undergraduate Enrollment by Age.....	16
Undergraduate Headcount by College: Fall 2010-2014.....	17
Fall 2014 Enrollment by Residence.....	18
Enrollment by Residence 2003-2014.....	19
Fall 2014 Enrollment by Race/Ethnicity.....	20
Minority Student Enrollment 2003-2014.....	21

Enrollment (continued)

Fall On-Campus Headcount & FTE Enrollment by Level 2003-2014.....	22
First Major Only by College and Level: Fall 2009-2014.....	23
Annual Degrees Awarded by Level 2004-2014.....	24
Degrees Granted by College 2012-13 and 2013-2014.....	25
Undergraduate Retention and Graduation Rates.....	26
Continuing Education Credit Enrollment Trends 2004-2014.....	27
Continuing Education Courses Offered 2003-2014.....	28
Web-based Learning Management System (LMS) 2009-2014.....	29
Fall Semester Residence Hall Occupancy by Gender and Level 2003-2014.....	30

Alumni

Total Living Alumni by College 2010-2014.....	31
Total Living Alumni by College.....	32
Alumni by State 2014.....	33
Alumni by Iowa County 2014.....	34
Post-Graduation Status of 2012-2014 Bachelors Degree Recipients.....	35
Post-Graduation Status of 2012-2014 Graduate Degree Recipients.....	36
Undergraduate Plans for Further Education 2013-2014.....	37
Graduate Plans for Further Education 2013-2014.....	38

Table of Contents (continued)

Faculty and Staff

UNI Workforce by Employment Categories 2004-2014.....	39
UNI Workforce Headcount & FTE by Employment Categories 2010-2014.....	40
UNI Workforce by Race/Ethnicity 2008-2014.....	41
UNI Workforce by Employment Categories and Race/Ethnicity Fall 2014.....	42
UNI Workforce Headcount & FTE by Employment Categories & College.....	43

Budget and Finance

Statement of Revenues, Expenses, and Changes In Net Assets 2009-2014.....	44
Financial Aid Programs by Source of Aid 2008-2014.....	46
Student Financial Aid Programs 2011-2014.....	47
Full-Time Undergraduate Student Tuition and Fees 1994-2014.....	48
Full-Time Graduate Student Tuition and Fees 1995-2014.....	49
Sponsored Project Proposals and Awards 2002-2014.....	50

Library

Library Statistics: 2009-2014.....	51
------------------------------------	----

General Information

International Students by Country: Fall 2014.....	53
International Students by College 2008-2014.....	54
Top 5 Countries of Origin for International Students 2003-2014.....	55
Study Abroad Destinations: 2013-2014.....	56
UNI Study Abroad Students by College and Classification: 2013-2014.....	57
UNI Study Abroad Students by Term.....	58
UNI Study Abroad Top Ten Countries.....	59
Incoming International Exchange Students by Country: 2013-2014.....	60
UNI Students Studying Abroad by Region.....	61
Top 5 Countries for UNI Study Abroad Students FY 2002-FY 2014.....	62
UNI Services to Businesses, Communities and Local Government.....	63
UNI Carnegie Classification.....	64
Iowa Economic Impact Profile.....	65

Peer Institutions

Undergraduate Enrollment and Costs 2012-2013.....	66
Faculty by Rank 2012-2013.....	67
Faculty Average Salaries by Rank 2012-2013.....	68
Undergraduates Receiving Student Financial Aid: 2012-2013.....	69
Retention Rates Fall 2012 - Fall 2013.....	70
Degrees Granted in Academic Year 2012-2013.....	71

Campus Map.....	Inside back cover
-----------------	-------------------



FACT BOOK

2014-2015

CIO's Office and Office of Institutional Research

Student Contributor:
Laura Formanek

Graphic and Publication Support:
Office of University Relations

Phone: 319-273-3050

Email: instrsch@uni.edu

Mission Statement

Institutional Mission

The University of Northern Iowa provides transformative learning experiences that inspire students to embrace challenge, engage in critical inquiry and creative thought and contribute to society.

Vision Statement

The University of Northern Iowa will be nationally known for innovative education, preparing students for success in a rapidly changing, globally competitive, and culturally diverse world.

Values

As a university community we are guided by the following core values:

Academic Freedom – freedom of inquiry by students, faculty, and staff

Access– an affordable, inclusive educational environment

Values (Continued)

Accountability – integrity, responsibility and the highest ethical standards of students, faculty and staff

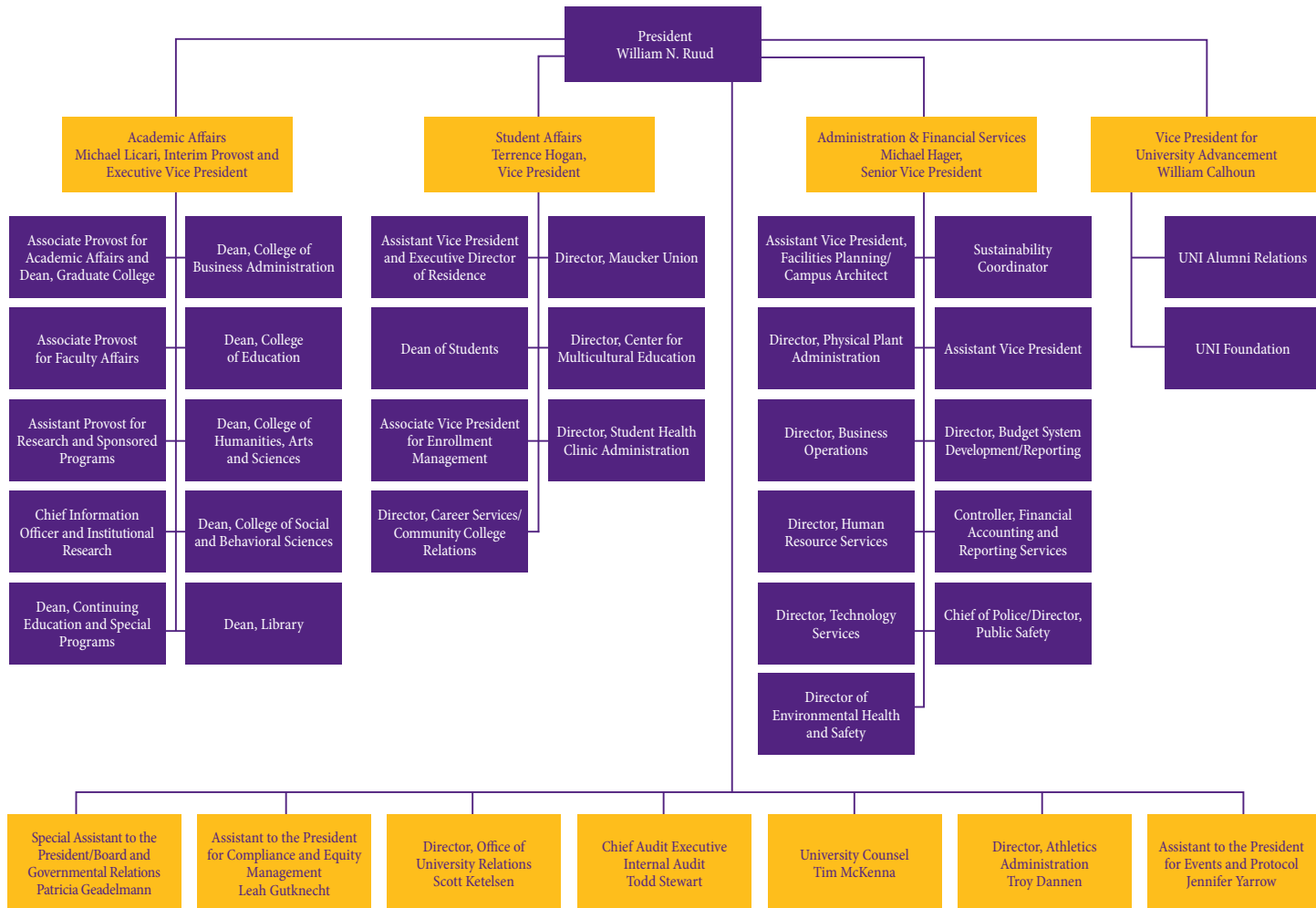
Community– an ethical, caring, and safe community characterized by civility

Diversity – a welcoming community that celebrates pluralism, multiculturalism, and the unique contributions of each person and group

Engagement – characterized by challenge, transformation, and lifelong learning in a global society

Excellence – in teaching and learning, scholarship and creative work, and service

Sustainability – an attractive, well-maintained campus environment that enhances the living and learning experience with an emphasis on environmental stewardship



UNI Administration

PRESIDENT..... Dr. William N. Ruud

EXECUTIVE VICE PRESIDENT and PROVOST (Interim)..... Dr. Michael Licari

SENIOR VICE PRESIDENT for ADMINISTRATION and FINANCIAL SERVICES..... Dr. Michael Hager

VICE PRESIDENTS

Vice President for Student Affairs..... Dr. Terrence Hogan

Vice President for University Advancement & President of the UNI Foundation..... Mr. William Calhoun

SPECIAL ASSISTANT BOARD and GOVERNMENT RELATIONS..... Dr. Patricia L. Geadelmann

CHIEF INFORMATION OFFICER Ms. Marty Mark

DIRECTOR OF UNIVERSITY RELATIONS..... Mr. Scott Ketelsen

ASSOCIATE VICE PRESIDENT FOR ENROLLMENT MANAGEMENT..... Mr. Matthew Kroeger

ASSOCIATE and ASSISTANT PROVOSTS

Associate Provost for Academic Affairs (Interim)..... Dr. April Chatham-Carpenter

Associate Provost for Faculty Affairs..... Dr. Nancy Cobb

Assistant Provost for Sponsored Programs..... Dr. Christine Twait

DEANS

College of Business Administration..... Dr. Farzad Moussavi

College of Education..... Dr. Dwight Watson

College of Humanities, Arts and Sciences (Interim)..... Dr. John Fritch

College of Social and Behavioral Sciences..... Dr. Brenda Bass

Continuing Education and Special Programs..... Dr. Kent Johnson

Graduate College (Interim)..... Dr. April Chatham-Carpenter

Library..... Mr. Christopher Cox

Definitions of Terms Used

ENROLLMENTS

Headcount: The count of each student enrolled for one or more courses taken in a semester following the second week of the semester's start.

Full-Time Student: An undergraduate student enrolled for 12 or more credit hours per semester and a graduate student enrolled for 9 or more credit hours per semester.

FTE (Full-Time Equivalent): An enrollment unit used to represent a student enrolled for a full course of study. It is calculated by dividing total credit hours generated by 15.0 for undergraduate students and by 9 for graduate students for a semester FTE.

Unclassified/Undeclared Student: A student who has enrolled in instructional courses but has not been officially accepted into one of the institution's authorized degree programs.

Freshman: A first-year undergraduate student.

First-Time First-Year Student: A student attending any institution for the first-time at the undergraduate level. Includes students enrolled in the fall term who attended college for the first time in the prior summer term. Also includes students who entered with advanced standing (college credits earned before graduate from high school).

First-Time Student: A student attending any institution for the first time at the level enrolled. Includes students enrolled in the fall term who attended a postsecondary institution for the first time at the same level in the prior summer term. Also includes students who entered with advanced standing (college credit earned before graduation from high school).

Graduation Rate: Rate required for disclosure and/or reporting purposes under Student Right-to-Know. Calculated as the total number of completers within 150 percent of normal time divided by the revised cohort minus any allowable exclusions.

FACULTY AND STAFF

Faculty (Instruction/Research/Public Service): Persons whose specific assignments customarily are made for the purpose of conducting instruction, research, or public service as a principle activity (or activities), and who hold academic rank titles of professor, associate professor, assistant professor, instructor, lecturer or the equivalent of any of these academic ranks. This category excludes president, vice presidents, and deans. Also excluded are faculty on leave without pay.

Executive, Administrative and Managerial: Persons whose assignments require primary (and major) responsibility for management of the institution, or a customarily recognized department or subdivision, thereof. Assignments require the performance of work directly related to management policies or general business operations of the institution, department or subdivision. It is assumed that assignments in this category customarily and regularly require the incumbent to exercise discretion and independent judgment, and to direct the work of others. Included in this category are all officers holding titles such as president, vice president, dean, director or the equivalent, as well as officers subordinated to any of these administrators with such titles as associate dean, assistant dean, executive officer of academic departments (department heads, or the equivalent) if their principal activity is administrative.

Definitions of Terms Used

BUDGET AND FINANCE

Current Funds Expenditures (and Transfers): The costs incurred for goods and services used in the conduct of the institution's operations. Includes the acquisition cost of capital assets, such as equipment and library books, to the extent current funds are budgeted for and used by operating departments for such purposes.

Current Funds Revenues: Unrestricted gifts, grants and other resources earned during the reporting period and restricted resources to the extent that such funds were expended for current operating purposes. Excludes restricted current funds received, but not expended because these revenues have not been earned.

Academic Support (Expenditures) for Public Institutions:

Expenditures for the support services that are an integral part of the public institution's primary mission of instruction, research or public service. Includes expenditures for libraries, museums, galleries, audiovisual services, academic computing support, ancillary support, academic administration, personnel development and course and curriculum development. Academic support expenditures for public institutions are measured differently than academic support expenses for private institutions because private institutions' academic support expenses include depreciation costs and interest costs in amounts associated with this function. In addition, private institutions exclude amounts of capital expenditures associated with the academic support function. Finally, operations and maintenance expenses associated with the academic support function are included in the amounts reported by private institutions but are reported separately by public institutions.

Auxiliary Enterprises (Expenditures) for public Institutions:

Expenditures for essentially self-supporting operations of the institution that exist to furnish a service to students, faculty or staff, and that charge a fee that is directly related to, although not necessarily equal to, the cost of the service. Includes mandatory and nonmandatory transfers. Examples are residence halls, food services, student health services, athletics, UNI-Dome and performing arts center. Auxiliary enterprise expenditures are measured differently for public and private institutions. Public institutions include capital expenditure amounts associated with auxiliary enterprise expenditures, but do not include depreciation, interest and operations and maintenance expenses. These amounts are included in private institutions' expenses of auxiliary enterprises.

OTHER

IPEDS: The Integrated Postsecondary Education Data System conducted by National Center for Education Statistics (NCES). IPEDS began in 1986 and involves annual data collections. Survey data are required from all postsecondary institutions that have a Program Participation Agreement (PPA) with the Office of Postsecondary Education, U.S. Department of Education. IPEDS also requests limited data from approximately 3,000 other schools offering postsecondary education programs.

NCA: North Central Association of Colleges and Schools

CALENDAR

Semester/Date

Fall 2014

Monday, August 25
 Monday, September 1
 Friday, October 17
 Monday, October 20
 Monday - Friday, November 24 - 28
 Thursday - Friday, November 27 - 28
 Monday - Friday, December 15 - 19
 Saturday, December 20
 Wednesday & Thursday, December 24 & 25

Spring 2015

Friday, January 2
 Monday, January 12
 Monday, January 19
 Friday, March 6
 Monday, March 9
 Monday - Friday, March 16 - 20
 Monday - Friday, May 4 - 8
 Saturday, May 9

Summer 2015

Monday, May 11
 Monday, May 11
 Monday, May 25
 Friday, June 5
 Monday, June 8
 Monday, June 8
 Friday, June 19
 Monday, June 22
 Thursday, July 2
 Friday, July 3
 Monday, July 6
 Friday, July 31

Event

Semester begins
 University holiday
 First half ends
 Second half begins
 Thanksgiving break
 University holiday
 Final exam week
 Commencement
 University holiday

University holiday
 Semester begins
 University holiday
 First half ends
 Second half begins
 Spring break
 Final exam week
 Commencement

First 4 wk session begins
 First 6 wk session begins
 University holiday
 First 4 wk session ends
 Second 4 wk session begins
 8 wk session begins
 First 6 wk session ends
 Second 6 wk session begins
 Second 4 wk session ends
 University holiday
 Third 4 wk session begins
 All sessions end

Semester/Date

Fall 2015

Monday, August 24
 Monday, September 7
 Friday, October 16
 Monday, October 19
 Monday - Friday, November 23 - 27
 Thursday - Friday, November 26 - 27
 Monday - Friday, December 14 - 18
 Saturday, December 29
 Thursday & Friday, December 24 & 25

Spring 2016

Friday, January 1
 Monday, January 11
 Monday, January 18
 Friday, March 4
 Monday, March 7
 Monday - Friday, March 14 - 18
 Monday - Friday, May 2 - 6
 Saturday, May 7

Summer 2016

Monday, May 9
 Monday, May 9
 Monday, May 30
 Friday, June 3
 Monday, June 6
 Monday, June 6
 Friday, June 17
 Monday, June 20
 Friday, July 1
 Monday, July 4
 Tuesday, July 5
 Friday, July 29



New Students

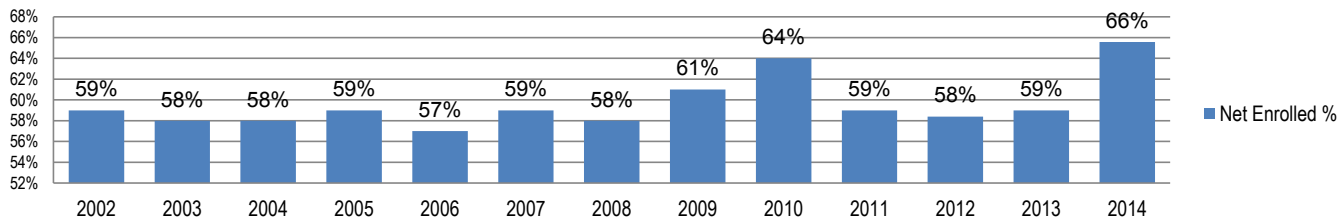


New Students

Fall 2014 New Students*

	Applications		Admissions		**Net Enrolled		NET ENROLLED					
	N	%	N	%	N	%	Resident		Non-Resident		International	
							N	%	N	%	N	%
TOTAL	8,597		4,807		3,186		2,840		240		106	
Percent				55.9		37.1		89.1		7.5		3.3
Undergraduate												
New Freshmen	5,524	74.6	2,962	71.9	1,797	66.5	1,651	67.0	112	70.4	34	43.6
Transfers	1,880	25.4	1,157	28.1	904	33.5	813	33.0	47	29.6	44	56.4
Total	7,404		4,119		2,701		2,464		159		78	
Percent				55.6		65.6		91.2		5.9		2.9
Graduate												
Students	1,193		688		485		376		81		28	
Percent				57.7		70.5		77.5		16.7		5.8

Net Enrolled % of Admitted

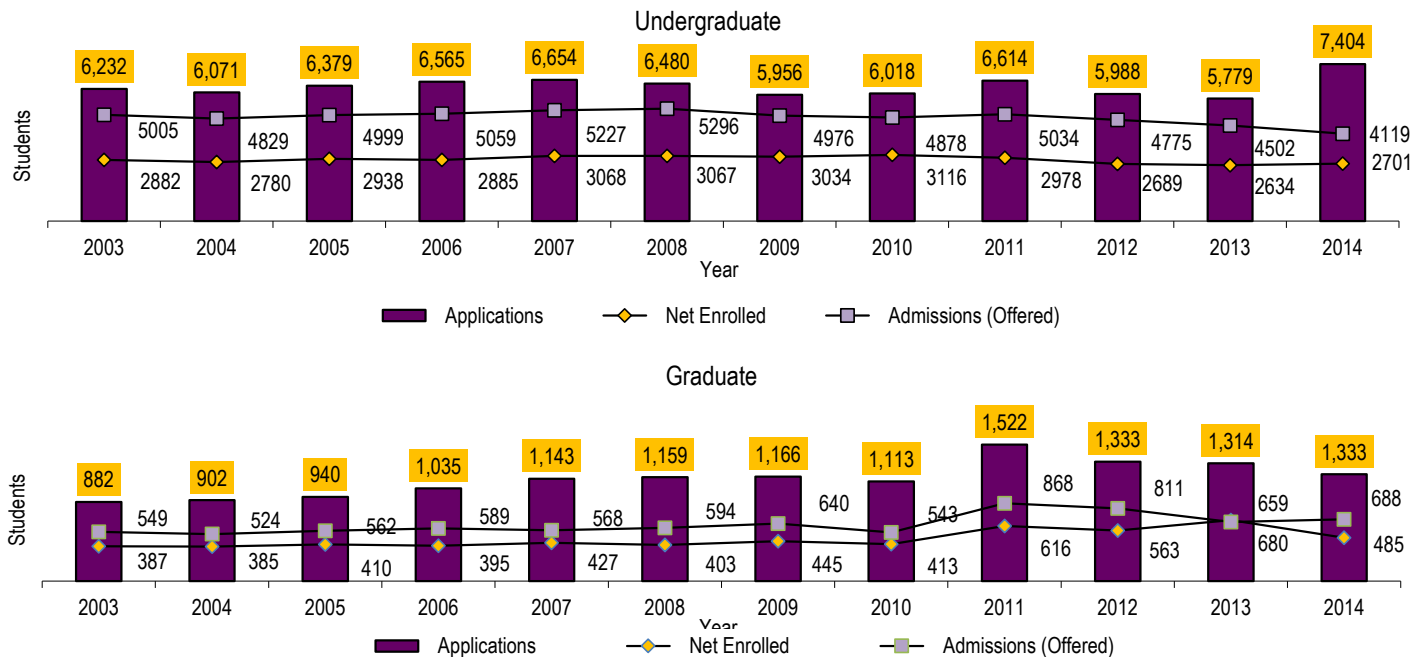


Source: CIO's Office and Institutional Research and Office of the Registrar

*The Undergraduate data does not reflect unclassified new students.

**Enrolled as % of applied

New Student Applications, Admissions and Enrolled Fall Semester 2003-2014



Source: Office of the Registrar

New Students Enrolled By Residence 2003-2014

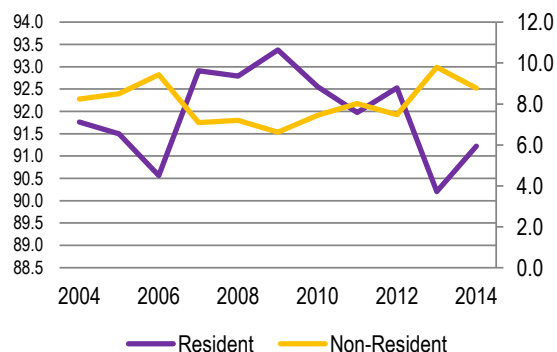
UNDERGRADUATE*

	Resident	Non-Resident	International Student
2003	2,780	105	97
2004	2,640	151	86
2005	2,766	149	108
2006	2,688	152	128
2007	2,937	191	33
2008	2,846	178	43
2009	2,834	146	55
2010	2,884	158	74
2011	2,739	177	62
2012	2,488	156	45
2013	2,376	182	76
2014	2,464	159	78

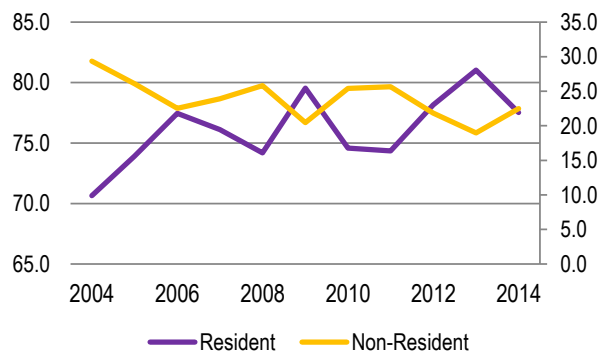
GRADUATE

	Resident	Non-Resident	International Student	Total	Annual Percent Change
2003	277	42	54	3,355	-3.0
2004	272	57	56	3,262	-2.8
2005	303	43	64	3,433	5.2
2006	299	44	43	3,354	-2.3
2007	325	33	69	3,588	7.0
2008	299	51	53	3,470	-3.3
2009	354	50	41	3,480	0.3
2010	308	55	50	3,529	1.4
2011	458	121	37	3,594	1.8
2012	440	81	42	3,252	-9.5
2013	551	101	28	3,314	1.9
2014	376	81	28	3,186	-3.9

Undergraduate New Student %



Graduate New Student %

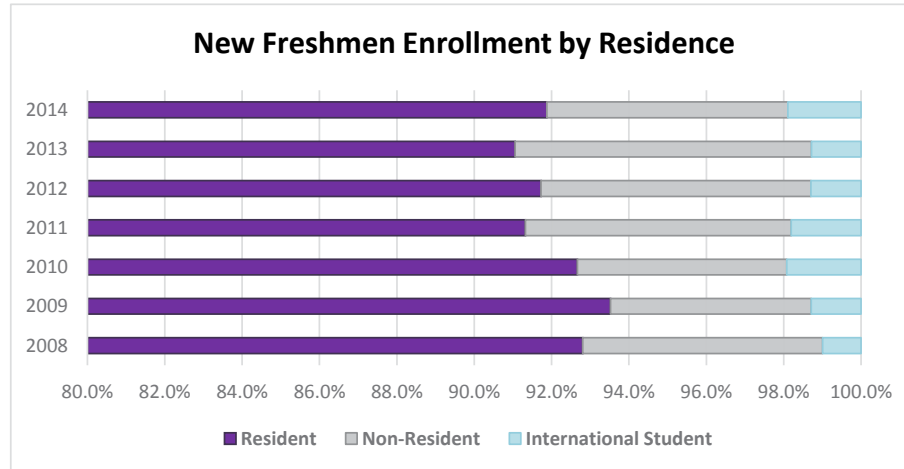


Source: Office of the Registrar

*New undergraduate students are only new freshmen and new transfers.

New Freshmen Enrollment by Residence 2008-2014

	2008		2009		2010		2011		2012		2013		2014	
	N	%	N	%	N	%	N	%	N	%	N	%	N	%
New Freshmen	2,015		1,946		1,978		1,937		1,704		1,722		1,797	
Annual Percent Change		1.2		-3.4		1.6		-2.1		-12.0		1.1		4.4
Resident	1,870	92.8	1,820	93.5	1,833	92.7	1,769	91.3	1,563	91.7	1,568	91.1	1,651	95.9
Non-Resident	125	6.2	101	5.2	107	5.4	133	6.9	119	7.0	132	7.7	112	6.5
International Student	20	1.0	25	1.3	38	1.9	35	1.8	22	1.3	22	1.3	34	2.0

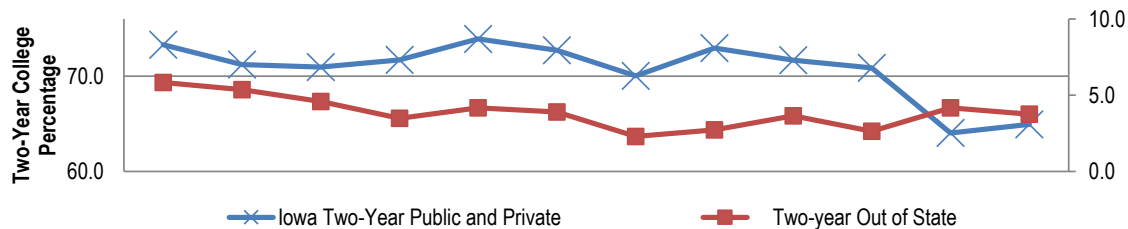


Source: Office of the Registrar

New Undergraduate Transfer Students by Type of Transfer College

	2004	2005	2006	2007	2008	2009	2010	2011	2012	2013	2014
TOTAL	1,080	1,201	1,117	1,077	1,052	1,088	1,138	1,041	985	912	904
Annual Percent Change	-1.5	11.2	-7.0	-3.6	-2.3	3.4	4.6	-8.5	-5.4	-7.4	-0.9
Iowa Two-Year Public and Private	769	852	801	796	765	762	830	746	698	584	587
Iowa Area Community Colleges	757	835	798	789	757	762	828	746	698	584	587
Iowa Two-Year Private	12	17	3	7	8	0	2	0	0	0	0
Iowa Four-Year Public and Private	167	203	197	165	171	186	183	174	181	178	180
Iowa Four-Year Public											
Iowa State University	45	35	26	30	23	32	32	32	21	25	32
University of Iowa	35	41	57	48	46	42	51	51	35	30	32
University of Northern Iowa*									25	40	32
Subtotal	80	76	83	78	69	74	83	83	81	95	96
Iowa Four-Year Private	87	127	114	87	102	112	100	91	100	83	84
Non-Iowa (US) Total	144	146	119	116	116	140	125	121	106	150	137
Two-year Out of State	58	55	39	45	41	25	31	38	26	38	34
Four-year Out of State	86	91	80	71	75	115	94	83	80	112	103

Two-Year New Undergraduate Transfer Students



Source: CIO's Office and Institutional Research

*Students transferring from UNI are returning UNI students pursuing a second BA or teacher license

New Freshmen ACT Composite Scores and High School Class Rank

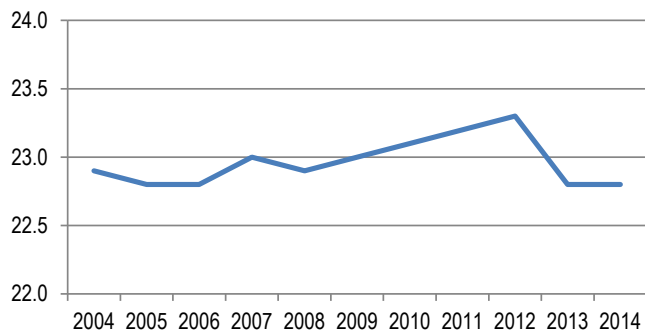
ACT Composite Scores

	Mean	75 th Percentile	25 th Percentile
2004	22.9	25.1	20.0
2005	22.8	25.1	20.0
2006	22.8	25.8	21.0
2007	23.0	25.7	20.9
2008	22.9	25.7	20.9
2009	23.0	25.9	21.1
2010	23.1	25.0	21.1
2011	23.2	25.0	21.0
2012	23.3	25.0	21.0
2013	22.8	24.0	20.0
2014	22.8	25.0	20.0

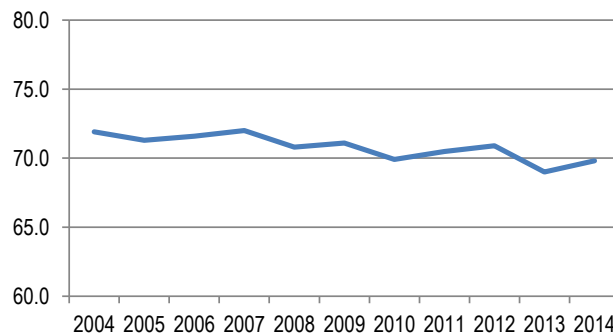
High School Rank

Mean	Percent in Upper 10%	Percent in Upper 20%	Percent in Upper 50%
71.9	19.1	38.5	89.7
71.3	19.0	39.1	89.5
71.6	18.2	37.6	88.7
72.0	19.0	38.9	88.5
70.8	18.6	37.6	85.3
71.1	18.9	40.1	85.3
69.9	17.6	36.2	84.0
70.5	19.1	37.2	84.1
70.9	20.0	38.9	84.6
69.0	18.1	37.1	81.6
69.8	17.0	35.9	83.1

ACT Mean Composite Score



High School Mean Rank



Source: CIO's Office and Institutional Research

A young woman with long blonde hair is looking down at a desk in a classroom. She is wearing a grey long-sleeved shirt under a dark vest. In the background, other students are visible but out of focus. The word "Enrollment" is written in large white letters across the bottom of the image.

Enrollment



McCOLLUM
SCIENCE
HALL

Enrollment

Fall 2014 Students Profile by College

	Total University	Business	Education	Humanities, Arts & Sciences^	S&B Sciences	No Specific College
TOTAL	11,928	2,014	2,775	3,836	1,911	1,392
Percent						
Full-Time	9,719	1,829	2,178	3,283	1,686	743
Part-Time	2,209	185	597	553	225	649
Female	6,945	768	1,986	2,051	1,206	934
Male	4,983	1,246	789	1,785	705	458
Freshman	2,047	371	381	658	272	365
Sophomore	1,928	389	408	639	313	179
Junior	2,437	517	521	852	478	69
Senior	3,470	653	846	1,254	617	100
Unclassified	260					260
Graduate	1,786	84	619	433	231	419
International Students:						
Undergraduate	487	179	18	133	20	137
Graduate	139	36	45	39	17	2
1st Majors:						
Undergraduate	10,142	1,930	2,156	3,403	1,680	973
Graduate	1,786	84	619	433	231	419
2013-2014 Degrees Granted:						
Baccalaureate (Bachelor's)	2,357	450	513	837	498	59
Master's	512	54	171	170	104	13
Specialists	8		8			
Doctorates	20		14	6		

Source: Office of the Registrar

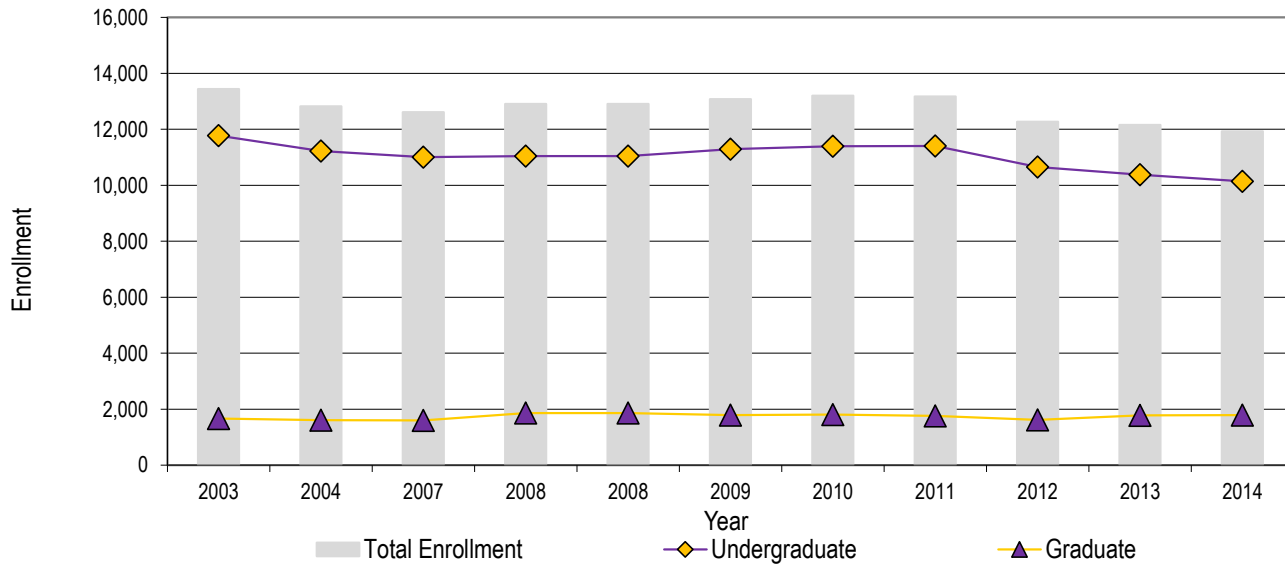
^Effective July 2011, the merge of College of Humanities and Fine Arts and College of Natural Sciences to College of Humanities, Arts and Sciences

Headcount Enrollment 2003-2014

	UNDERGRADUATE		GRADUATE		Total	Annual
	Full-Time	Part-Time	Full-Time	Part-Time		Percent Change
2003	10,510	1,264	566	1,101	13,441	-3.5
2004	9,987	1,233	678	926	12,824	-4.6
2005	9,782	1,170	681	880	12,513	-2.4
2006	9,606	1,096	690	868	12,260	-2.0
2007	9,888	1,122	692	907	12,609	2.8
2008	10,028	1,019	731	1,130	12,908	2.4
2009	10,279	1,015	781	1,005	13,080	1.3
2010	10,378	1,013	770	1,040	13,201	0.9
2011	10,209	1,199	742	1,018	13,168	-0.2
2012	9,679	976	682	936	12,273	-6.8
2013	9,330	1,050	638	1,141	12,159	-0.9
2014	9,122	1,020	597	1,189	11,928	-1.9

Source: Office of the Registrar

Headcount Enrollment by Level 2003-2014*



Source: Office of the Registrar

*Includes Full-Time and Part-Time Students

Undergraduate Enrollment by Age 2004-2014

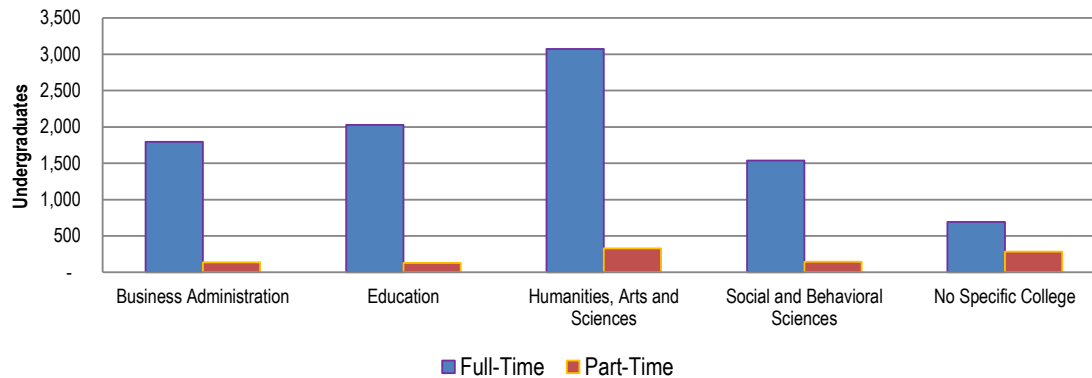
Fall Semester	2004	2005	2006	2007	2008	2009	2010	2011	2012	2013	2014
Total Enrollment	11,220	10,952	10,702	11,010	11,047	11,294	11,391	11,408	10,655	10,380	10,142
Under 18	106	108	106	113	91	94	102	49	21	64	46
18	1,435	1,463	1,526	1,729	1,758	1,708	1,733	1,165	1,001	992	1,068
19	1,712	1,669	1,699	1,756	1,950	1,915	1,909	1,879	1,779	1,682	1,677
20	1,964	2,062	1,974	1,986	2,013	2,254	2,201	2,072	2,008	1,908	1,833
21	2,338	2,067	2,120	2,114	2,045	2,054	2,300	2,227	2,158	2,098	2,023
22	1,682	1,584	1,353	1,417	1,383	1,330	1,322	1,729	1,611	1,598	1,554
23	665	677	686	596	579	577	527	855	776	771	741
24	290	289	312	312	258	292	264	309	352	309	300
25	184	194	165	191	184	174	197	200	158	178	170
26	118	121	120	129	126	139	137	152	118	117	115
27	100	92	77	90	88	98	91	118	89	87	85
28	77	78	73	69	74	91	69	82	86	60	70
29	51	58	58	66	57	69	71	61	62	55	58
30-39	290	294	263	268	256	310	301	325	293	307	272
40-49	148	138	116	120	120	127	104	134	101	96	85
50-64	59	55	51	49	61	60	61	48	41	57	43
65 and older	1	3	3	5	4	2	2	3	1	1	2

Source: Office of the Registrar

Undergraduate Headcount by College: Fall 2010 - 2014

	Full-Time					Part-Time					
	2010	2011	2012	2013	2014	2009	2010	2011	2012	2013	2014
Total University	10,378	10,209	9,679	9,330	9,122	1,015	1,013	1,198	976	1,050	1,020
Business Administration	2,136	1,957	1,856	1,828	1,793	198	188	228	182	174	137
Education	2,241	2,186	2,058	2,058	2,029	146	140	182	121	130	127
Humanities, Arts and Sciences	-	3,481	3,371	3,189	3,073	-	-	365	328	310	330
Social and Behavioral Sciences	1,710	1,753	1,706	1,612	1,537	119	153	168	153	168	143
No Specific College	849	832	688	643	690	284	276	255	192	268	283

Fall 2014 Undergraduates by College



Source: Office of the Registrar

Fall 2014 Enrollment by Residence

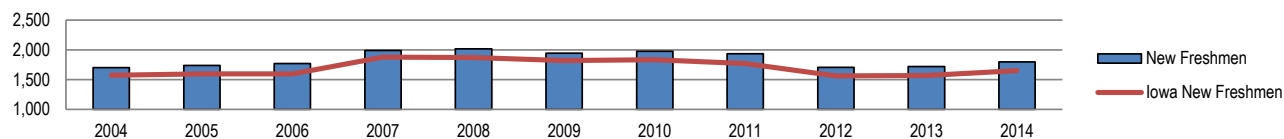
	Iowa Resident		U.S. Non-Iowa Resident		International Student		TOTAL
	N	%	N	%	N	%	N
Enrollment	10,491	88.0	811	6.8	626	5.2	11,928
New Freshmen	1,651	91.9	112	6.2	34	1.9	1,797
Undergraduate	9,052	89.3	603	5.9	487	4.8	10,142
New Graduate	376	77.5	81	16.7	28	5.8	485
Graduate	1,439	80.6	208	11.6	139	7.8	1,786

Source: Office of the Registrar

Enrollment by Residence 2004-2014

												5 Yr %	10 Yr %
Fall Semester	2004	2005	2006	2007	2008	2009	2010	2011	2012	2013	2014	Change	Change
Enrollment	12,824	12,513	12,260	12,609	12,908	13,080	13,201	13,168	12,273	12,159	11,928	-8.8	-7.0
Iowa Resident	11,793	11,400	11,129	11,444	11,562	11,896	11,978	11,915	11,095	10,842	10,491	-11.8	-11.0
U.S., Non-Iowa Resident	680	691	699	693	882	731	743	765	724	797	811	10.9	19.3
International Student	351	422	432	472	464	453	480	488	454	520	626	38.2	78.3
New Freshmen	1,700	1,737	1,768	1,991	2,015	1,946	1,978	1,937	1,704	1,722	1,797	-7.7	5.7
Iowa Resident	1,573	1,598	1,594	1,878	1,870	1,820	1,833	1,769	1,563	1,568	1,651	-9.3	5.0
U.S., Non-Iowa Resident	105	124	139	100	125	101	107	133	119	132	112	10.9	6.7
International Student	22	15	35	13	20	25	38	35	22	22	34	36.0	54.5
Undergraduate	11,220	10,952	10,702	11,010	11,047	11,294	11,391	11,408	10,655	10,380	10,142	-10.2	-9.6
Iowa Resident	10,516	10,185	9,907	10,157	10,185	10,469	10,532	10,522	9,806	9,411	9,052	-13.5	-13.9
U.S., Non-Iowa Resident	516	537	542	555	598	541	526	541	530	578	603	11.5	16.9
International Student	188	230	253	298	264	284	333	345	319	391	487	71.5	159.0
Graduate	1,604	1,561	1,558	1,599	1,861	1,786	1,810	1,760	1,618	1,779	1,786	0.0	11.3
Iowa resident	1,277	1,215	1,222	1,287	1,377	1,427	1,446	1,393	1,289	1,431	1,439	0.8	12.7
U.S., Non-Iowa Resident	164	154	157	138	284	190	217	224	194	219	208	9.5	26.8
International Student	163	192	179	174	200	169	147	143	135	129	139	-17.8	-14.7

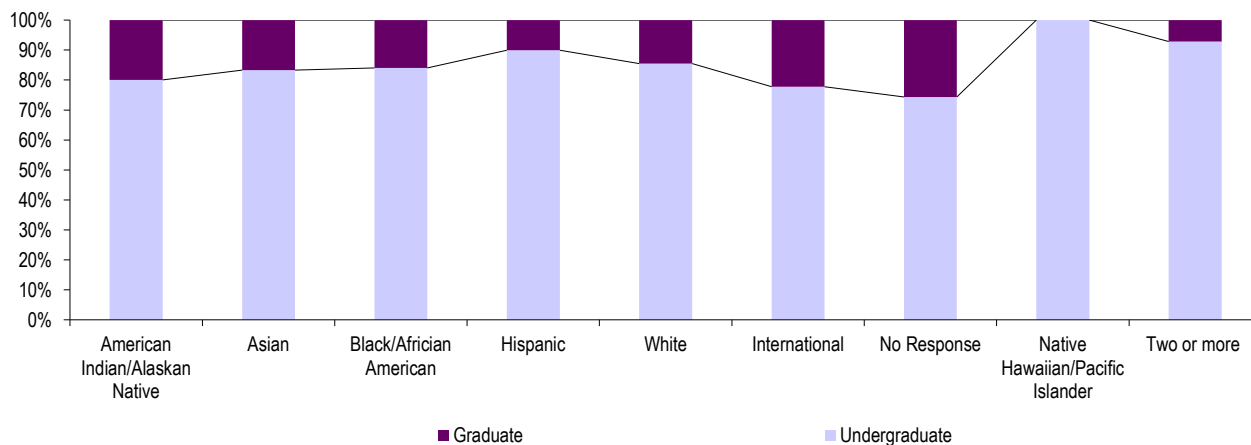
New Freshmen



Source: Office of the Registrar

Fall 2014 Enrollment by Race/Ethnicity

	American Indian/ Alaskan Native		Asian		Black/ African American		Hispanic		White		International		No Response		Native Hawaiian/ Pacific Islander		Two or more	
	N	%	N	%	N	%	N	%	N	%	N	%	N	%	N	%	N	%
Enrollment	25	100	108	100	339	100	377	100	9,967	100	626	100	269	100	7	100	210	100
Undergraduate	20	80.0	90	83.3	285	84.1	339	89.9	8,519	85.5	487	77.8	200	74.3	7	100.0	195	92.9
Graduate	5	20.0	18	16.7	54	15.9	38	10.1	1,448	14.5	139	22.2	69	25.7	0	0.0	15	7.1
Percentage	0.2		0.9		2.8		3.2		83.6		5.2		2.3		0.1		1.8	



Undergraduate 10,142
Graduate 1,786

Minority Student Enrollment 2003-2014

UNDERGRADUATE

	American Indian/ Alaskan Native	Asian/ Pacific Islander	Black/ African American	Hispanic/ Latino	Native Hawaiian/ Pacific Islander	Two or more
2003	28	130	323	187		
2004	30	114	324	200		
2005	23	116	317	164		
2006	28	131	288	181		
2007	34	133	287	177		
2008	28	121	300	199		
2009	20	117	305	243	5	77
2010	21	105	303	232	4	103
2011	17	118	300	257	2	121
2012	21	107	300	280	4	143
2013	19	87	279	289	5	168
2014	20	90	285	339	7	195

GRADUATE

	American Indian/ Alaskan Native	Asian/ Pacific Islander	Black/ African American	Hispanic/ Latino	Native Hawaiian/ Pacific Islander	Two or more
	4	11	103	21		
	4	11	101	25		
	3	13	98	22		
	3	16	89	24		
	2	18	70	24		
	6	26	92	38		
	3	19	72	39	0	4
	4	19	80	44	0	7
	7	26	66	41	1	11
	3	21	67	33	0	10
	5	20	62	33	2	11
	5	18	54	38	0	15

Source: Office of the Registrar

*Includes all international students; other categories include American citizens, immigrants, asylees, and refugees only.

NOTE: The Race/Ethnicity reporting was changed in Fall 2009 semester to implement the new U.S. Department of Education guidelines.

Fall On-Campus Headcount and Full-Time Equivalent (FTE) Enrollment by Level 2003-2014

	Headcount							FTE Enrollment						
	Undergraduate					Graduate		Undergraduate					Graduate	
	F	S	Jr	Sr	Unclassified	Master's	Advanced	F	S	Jr	Sr	Unclassified	Master's	Advanced
2003	2,278	2,085	3,195	3,960	256	1,173	494	2,063	1,890	2,848	3,403	79	862	279
2004	2,199	1,957	2,921	3,936	207	1,100	504	1,997	1,764	2,589	3,377	68	893	318
2005	2,189	2,004	2,928	3,591	240	1,112	449	2,045	1,869	2,665	3,133	89	933	282
2006	2,266	1,919	2,857	3,418	242	1,113	445	2,090	1,814	2,631	3,001	87	945	267
2007	2,520	1,924	2,866	3,425	275	1,157	442	2,299	1,808	2,646	3,003	100	998	253
2008	2,528	2,100	2,766	3,416	237	1,369	492	2,343	2,003	2,563	3,010	94	1,080	272
2009	2,377	2,214	2,971	3,482	250	1,300	486	2,172	2,109	2,772	3,057	93	1,098	270
2010	2,340	2,181	3,037	3,574	259	1,289	521	2,139	2,068	2,827	3,159	108	1,076	304
2011	2,388	2,173	2,823	3,872	152	1,236	524	2,060	2,031	2,562	3,342	60	1,046	292
2012	2,091	2,096	2,737	3,589	142	1,161	457	1,891	1,999	2,533	3,153	54	977	266
2013	2,037	1,902	2,662	3,569	210	1,283	496	1,874	1,810	2,485	3,114	60	991	282
2014	2,047	1,928	2,437	3,470	260	1,232	554	1,899	1,818	2,260	3,065	77	907	285

Source: Office of the Registrar

First Major Only by College and Level: Fall 2009 - 2014

	Undergraduate						Graduate					
	2009	2010	2011	2012	2013	2014	2009	2010	2011	2012	2013	2014
Total University	11,294	11,391	11,408	10,655	10,380	10,142	1,786	1,810	1,760	1,618	1,779	1,786
Business Administration	2,350	2,324	2,185	2,038	2,002	1,930	85	65	84	89	86	84
Education	2,296	2,381	2,368	2,179	2,188	2,156	667	564	557	528	603	619
Humanities , Arts and Sciences	-	-	3,846	3,699	3,499	3,403	-	-	472	381	417	433
Social and Behavioral Sciences	1,803	1,863	1,921	1,859	1,780	1,680	192	282	249	231	246	231
No Specific College	1,151	1,125	1,088	880	911	973	377	418	398	389	427	419

Source: Office of the Registrar

Annual Degrees Awarded by Level 2004-2014

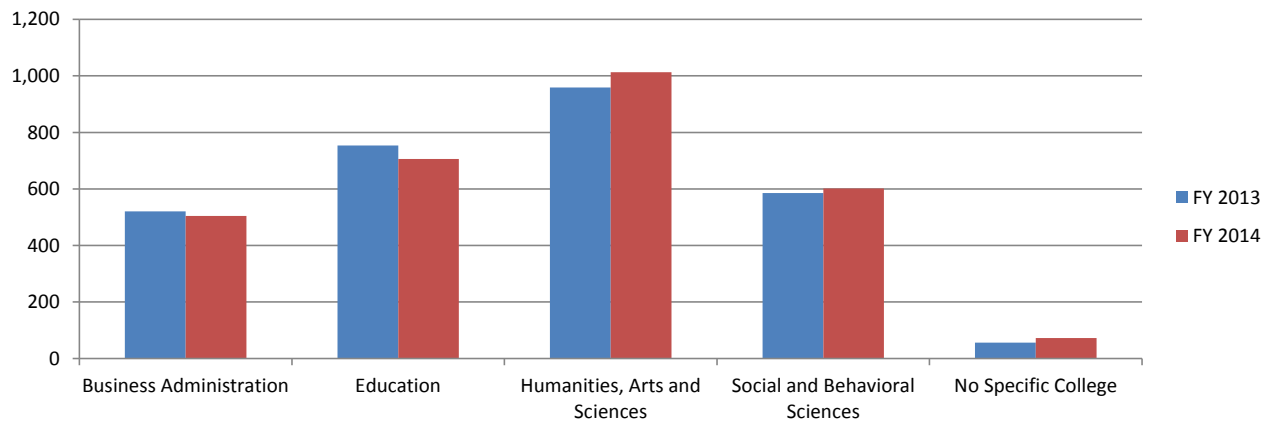
	2003- 2004	2004- 2005	2005- 2006	2006 - 2007	2007 - 2008	2008 - 2009	2009 - 2010	2010 - 2011	2011 - 2012	2012 - 2013	2013 - 2014	5 Yr % Change	10 Yr % Change
Total Degrees Awarded	3,039	3,176	2,933	2,748	2,720	2,751	2,934	2,725	3,034	2,873	2,897	5.3	-4.7
Baccalaureate	2,584	2,669	2,423	2,259	2,221	2,268	2,347	2,198	2,440	2,349	2,357	3.9	-8.8
Master's	434	494	485	471	474	467	561	509	572	483	512	9.6	18.0
Specialists	11	3	7	10	9	6	6	5	10	13	8	33.3	-27.3
Doctorates	10	10	18	8	16	10	20	13	12	28	20	100.0	100.0
Undergraduate Degrees Awarded	2,584	2,669	2,423	2,259	2,221	2,268	2,347	2,198	2,440	2,349	2,357	3.9	-8.8
Bachelor of Arts	2,463	2,514	2,272	2,148	2,121	2,148	2,201	2,079	2,293	2,227	2,209	2.8	-10.3
Bachelor of Fine Arts	8	9	15	8	8	3	8	6	11	11	11	266.7	37.5
Bachelor of Music	23	22	19	19	14	22	27	15	22	18	34	54.5	47.8
Bachelor of Science	74	90	93	64	64	76	84	84	98	79	86	13.2	16.2
Bachelor of Technology*	0	0	0	0	0	0	0	0	0	0	0	-	-
Bachelor of Liberal Studies	16	34	24	20	14	19	27	14	16	14	17	-10.5	6.3
Graduate Degrees Awarded	455	507	510	489	499	483	587	527	594	524	540	11.8	18.7
Master of Accounting	23	13	19	11	23	36	29	21	25	20	18	-50.0	-21.7
Master of Arts in Education	127	147	108	129	119	99	147	105	121	104	118	19.2	-7.1
Master of Arts	198	206	237	231	208	204	243	255	284	235	242	18.6	22.2
Master of Business Administration	21	52	62	35	42	42	40	31	27	28	36	-14.3	71.4
Master of Music	11	19	12	13	22	14	24	10	26	11	15	7.1	36.4
Master of Public Policy	11	6	5	11	16	10	4	10	11	9	11	10.0	0.0
Master of Science	13	21	15	10	10	16	15	19	21	22	23	43.8	76.9
Master of Social Work	30	30	27	31	29	27	40	41	40	33	37	37.0	23.3
Professional Science Master's	0	0	0	0	5	19	19	17	17	21	12	-36.8	NA
Specialist in Education	11	3	7	10	9	6	6	5	10	13	8	33.3	-27.3
Doctor of Technology	2	1	3	0	1	1	2	1	1	2	6	500.0	200.0
Doctor of Education	8	9	15	8	15	9	18	12	11	26	14	55.6	75.0

Source: Office of the Registrar

*The Bachelor of Technology Degree was dropped effective Fall 1996 when the Bachelor of Technology Major in Construction Management was changed to a Bachelor of Science Major in Construction Management.

Degrees Granted by College 2012-2013 and 2013-2014

	Baccalaureates				Master's				Specialists				Doctorates			
	2012-2013		2013-2014		2012-2013		2013-2014		2012-2013		2013-2014		2012-2013		2013-2014	
	N	%	N	%	N	%	N	%	N	%	N	%	N	%	N	%
Total Degrees Granted	2,349	100	2,357	100	483	100	512	100	13	100	8	100	30	100	20	100
Business Administration	473	20.1	450	19.1	48	9.9	54	10.5	0	0	0	0	0	0	0	0
Education	543	23.1	513	21.8	172	35.6	171	33.4	13	100	8	100	26	86.7	14	70.0
Humanities, Arts and Sciences	785	33.4	837	35.5	170	35.2	170	33.2	0	0	0	0	4	13.3	6	30.0
Social and Behavioral Sciences	493	21.0	498	21.1	92	19.0	104	20.3	0	0	0	0	0	0	0	0
No Specific College	55	2.341	59	2.5	1	0.2	13	2.5	0	0	0	0	0	0	0	0



2013-2014 Degrees by College
2,897 Degrees Granted

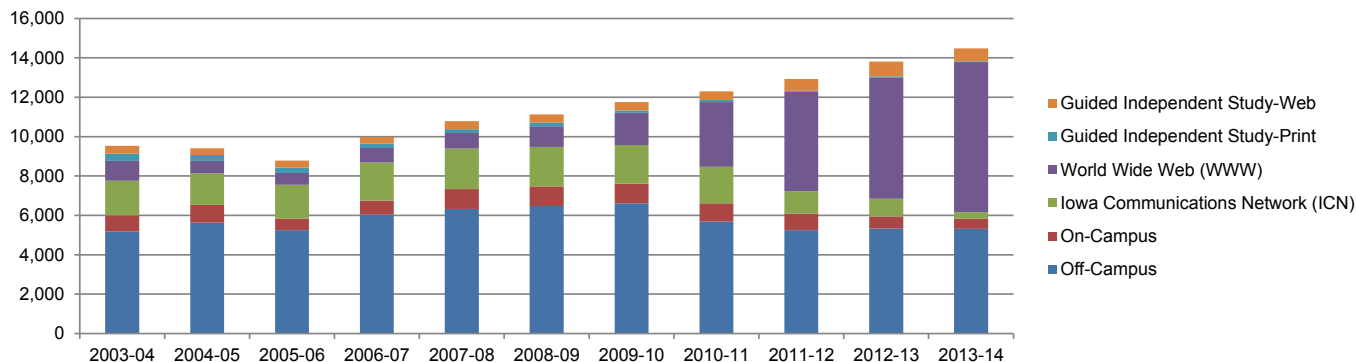
Undergraduate Retention and Graduation Rates 1994-2013

Admit Year	Total First Time Freshmen	Continuing 2nd Year		Graduating 4th Year		Graduating 6th Year	
		N	%	N	%	N	%
1994	1,856	1,498	80.7	541	29.1	1,161	62.6
1995	2,007	1,642	81.8	606	30.2	1,293	64.4
1996	2,012	1,649	82.0	674	33.5	1,342	66.7
1997	1,919	1,582	82.4	556	29.0	1,254	65.3
1998	1,982	1,605	81.0	588	29.7	1,273	64.2
1999	2,124	1,729	81.4	713	33.6	1,379	64.9
2000	2,218	1,863	84.0	756	34.1	1,492	67.3
2001	2,064	1,681	81.4	672	32.6	1,348	65.3
2002	1,822	1,469	80.6	614	33.7	1,152	63.2
2003	1,740	1,417	81.4	618	35.5	1,160	66.7
2004	1,652	1,337	80.9	584	35.4	1,110	67.2
2005	1,694	1,390	82.1	616	36.4	1,130	66.7
2006	1,684	1,386	82.3	648	38.5	1,117	66.3
2007	1,922	1,608	83.7	708	36.8	1,278	66.5
2008	1,976	1,627	82.3	747	37.8	1261	63.8
2009	1,917	1,582	82.5	721	37.6		
2010	1,934	1,586	82.0	759	39.2		
2011	1,897	1,543	81.3				
2012	1,678	1,391	82.9				
2013	1,689	1,430	84.7				

Source: Office of the Registrar

Continuing Education Credit Enrollment Trends 2004-2014

	2003 - 2004	2004 - 2005	2005 - 2006	2006 - 2007	2007 - 2008	2008 - 2009	2009 - 2010	2010 - 2011	2011- 2012	2012- 2013	2013- 2014
Total	9,528	9,413	8,778	9,984	10,783	11,127	11,749	12,302	12,924	13,818	14,481
Annual Percent Change	-6.6	-1.2	-6.7	13.7	8.0	3.2	5.6	4.7	5.1	6.9	4.8
Off-Campus	5,182	5,629	5,246	6,048	6,330	6,477	6,617	5,690	5,257	5,336	5,313
On-Campus	814	910	596	700	1,001	995	989	921	846	616	530
Iowa Communications Network (ICN)	1,768	1,606	1,719	1,936	2,070	2,009	1,967	1,856	1,123	898	320
World Wide Web (WWW)	1,002	630	595	735	782	1,044	1,633	3,289	5,041	6,153	7,627
Guided Independent Study-Print	372	294	273	229	200	197	130	109	63	67	41
Guided Independent Study-Web	390	344	349	336	400	405	413	437	594	748	650

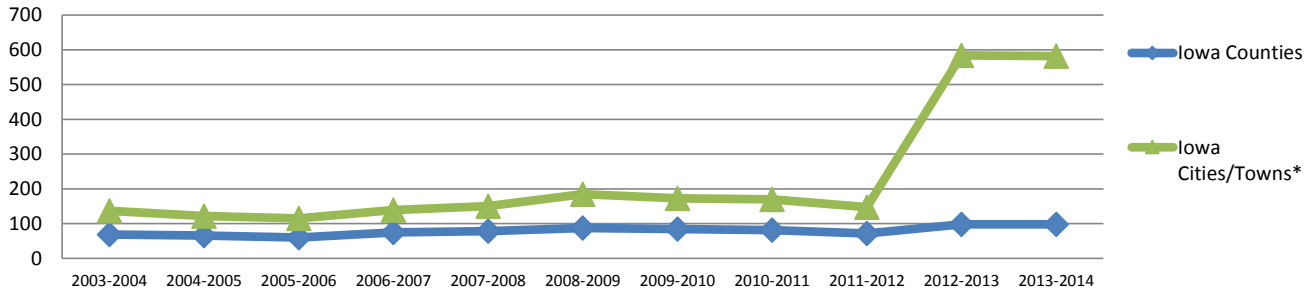


Source: Continuing Education and Special Programs

Continuing Education Courses Offered 2003-2014

	Iowa Counties	Iowa Cities/Towns*	Number of Off-Campus Degree and Certificate Programs
2003-2004	69	137	19
2004-2005	66	122	20
2005-2006	60	115	21
2006-2007	75	139	22
2007-2008	78	150	21
2008-2009	87	185	23
2009-2010	84	173	24
2010-2011	81	170	24
2011-2012	72	147	25
2012-2013	98	584	27
2013-2014	98	582	32

Continuing Education Course Locations Offered

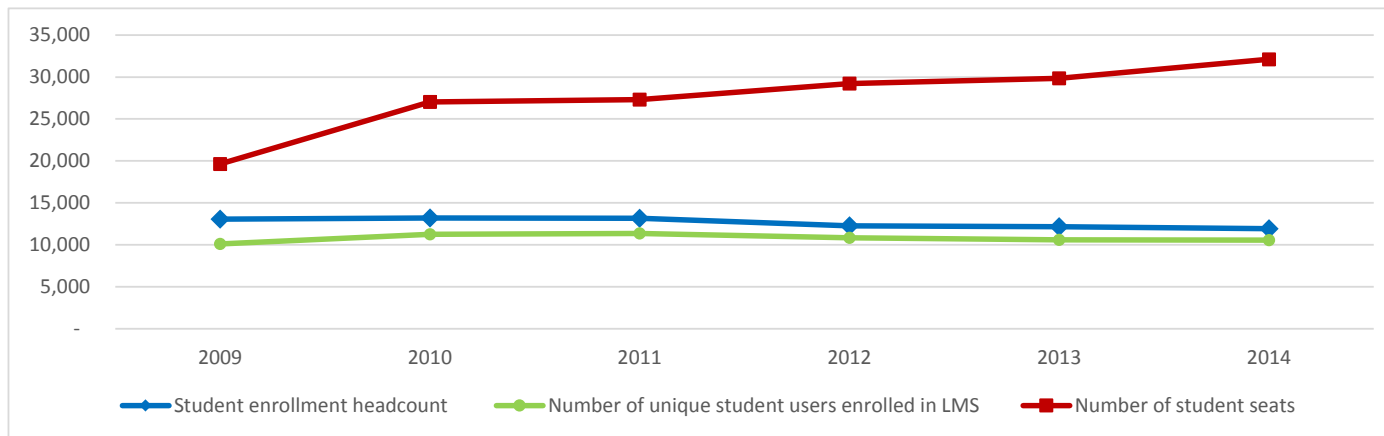


Source: *Continuing Education and Special Programs*

*Effective 2012-2013, Iowa Cities/Towns reflect locations in which students enrolled in courses offered at an off-campus location, an ICN location, in a guided independent study course, or in an online (semester) course. Prior to 2012-2013, locations reflected only students enrolled in off-campus, ICN, or guided independent study courses. Including city/town locations for students enrolled in online courses brings reporting in line with practices at the other Iowa Regent universities.

Web-based Learning Management System (LMS) 2009-2014

	Fall					
	2009	2010	2011	2012	2013	2014
Student enrollment headcount	13,080	13,201	13,168	12,273	12,159	11,928
Number of unique student users enrolled in LMS	10,108	11,263	11,357	10,835	10,611	10,567
Number of student seats	19,644	27,032	27,307	29,237	29,858	32,122
Number of instructors or designers	411	385	419	468	482	547
Number of active academic organized sections in LMS	750	1,001	1,248*	1,309	1,330	1,488



Source: ITS - Educational Technology

*Prior to the Fall 2011 semester, UNI implemented a new course numbering system which resulted in undergraduate and graduate sections of the same class being entered individually into the new Student Information System (SIS). Although we use the same method to count the number of sections, this change will result in a higher number of sections counted than with the previous SIS used for the Fall 2010 and older semesters. This is noted so that viewers do not directly compare the "Number of active academic organized sections in LMS" values for Fall 2010 and Fall 2011.

Fall Semester Residence Hall Occupancy by Gender and Level 2003-2014

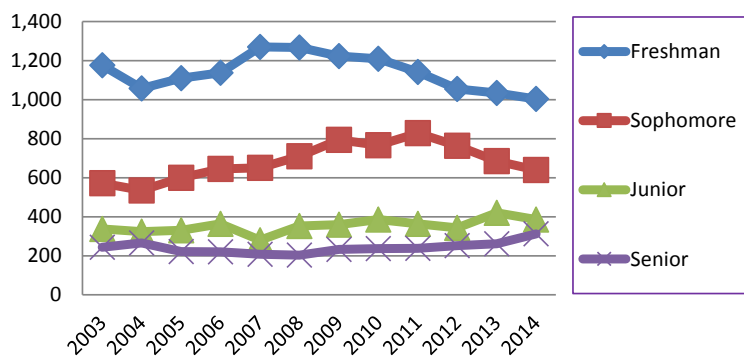
Female

	Freshman	Sophomore	Junior	Senior	Unclassified & Graduates
2003	1,176	572	338	243	52
2004	1,057	535	323	266	95
2005	1,110	600	330	221	120
2006	1,138	645	363	220	103
2007	1,270	651	280	207	109
2008	1,267	710	353	203	104
2009	1,223	794	359	233	65
2010	1,209	767	386	237	101
2011	1,141	828	363	238	78
2012	1,055	763	343	252	84
2013	1,034	685	420	261	88
2014	1,003	640	385	312	109

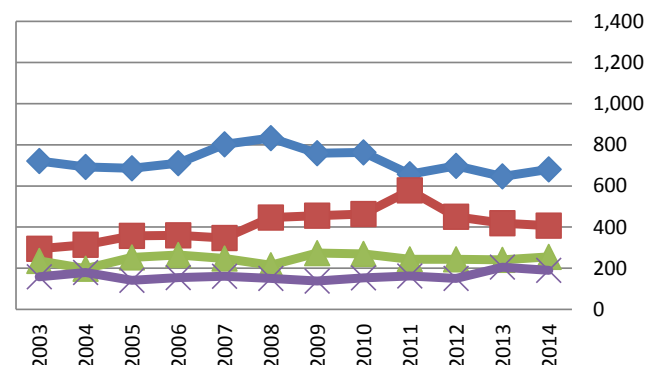
Male

	Freshman	Sophomore	Junior	Senior	Unclassified & Graduates
2003	721	295	236	159	26
2004	692	314	198	179	83
2005	686	357	253	142	79
2006	711	360	264	155	82
2007	802	347	247	161	103
2008	833	446	215	151	90
2009	759	455	274	138	69
2010	763	463	270	153	79
2011	657	578	244	162	70
2012	698	450	244	150	84
2013	646	419	241	205	62
2014	681	407	255	190	106

Undergraduates - Female



Male



A woman with curly brown hair, wearing a purple t-shirt and a black cat mask with yellow eyes, is smiling and holding a smartphone. She is standing in front of a booth with a yellow sign that reads "Small university. Big education." Other people in purple shirts are visible in the background.

Small university.
Big education.

Alumni



Alumni

Total Living Alumni by College 2010-2014

College	2010		2011		2012		2013		2014	
	N	%	N	%	N	%	N	%	N	%
Sub-total Alumni***	107,208		109,285		110,837		113,152		115,405	
TOTAL living Alumni****	103,267		103,952^		106,842		109,062		111,241	
Business Administration	21,047	19.6	21,558	19.7	21,985	19.8	22,423	19.8	22,864	19.8
Education*	33,502	31.2	33,879	31.0	33,880	30.6	34,370	30.4	34,819	30.2
Humanities, Arts and Sciences	-	-	32,861	30.1	33,534	30.3	34,355	30.4	35,155	30.5
Social and Behavioral Sciences	17,089	15.9	17,558	16.1	17,940	16.2	18,438	16.3	18,941	16.4
College Unassigned**	3,363	3.1	3,429	3.1	3,498	3.2	3,566	3.2	3,626	3.1

Source: *Alumni Association*

* Includes Alumni earning only Teaching Certificates.

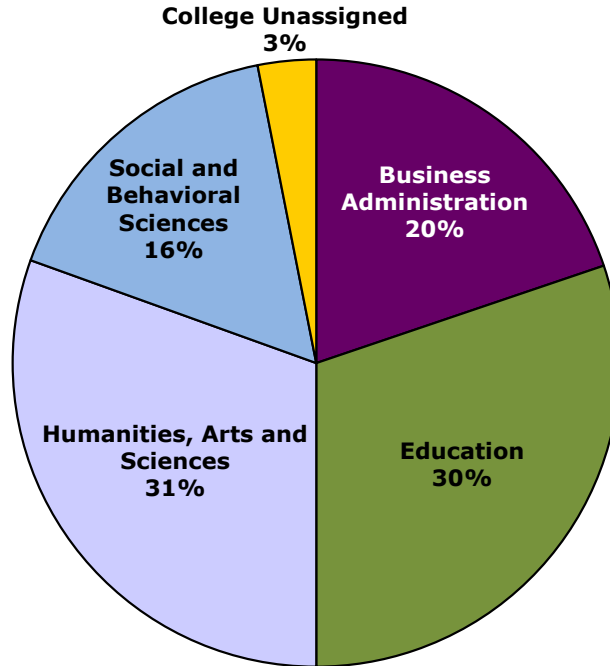
** Includes Individual Studies, General Studies and Liberal

*** Alumni having earned degrees in different colleges are counted in each college; alumni earning multiple degrees in the same college are counted only once for that college.

**** Grads counted a single time even when earning multiple degree(s).

Updated 10-9-2014; includes grads thru Aug '14

Total Alumni by College



Alumni = 115,405

Alumni by State 2014*

State	Alumni	State	Alumni
Alabama	194	Montana	168
Alaska	138	Nebraska	1,688
Arizona	2,014	Nevada	355
Arkansas	320	New Hampshire	74
California	2,513	New Jersey	208
Colorado	2,665	New Mexico	257
Connecticut	139	New York	500
Delaware	44	North Carolina	686
Florida	1,695	North Dakota	103
Georgia	638	Ohio	605
Hawaii	145	Oklahoma	331
Idaho	158	Oregon	517
Illinois	3,971	Pennsylvania	360
Indiana	675	Rhode Island	33
Iowa	68,510	South Carolina	305
Kansas	1,420	South Dakota	532
Kentucky	219	Tennessee	484
Louisiana	131	Texas	3,187
Maine	49	Utah	133
Maryland	331	Vermont	27
Massachusetts	221	Virginia	691
Michigan	621	Washington	807
Minnesota	5,297	West Virginia	31
Mississippi	74	Wisconsin	2,258
Missouri	2,020	Wyoming	142
		District of Columbia	81

Source: Alumni Association

*As of 10-9-2014 including Sum '14 grads

Alumni by Iowa County 2014

County	Alumni	County	Alumni	County	Alumni	County	Alumni
Adair	61	Decatur	37	Johnson	2,293	Pocahontas	107
Adams	23	Delaware	478	Jones	365	Polk	11,637
Allamakee	267	Des Moines	370	Keokuk	148	Pottawattamie	598
Appanoose	84	Dickinson	387	Kossuth	364	Poweshiek	408
Audubon	64	Dubuque	1,976	Lee	242	Ringgold	33
Benton	738	Emmet	109	Linn	6,361	Sac	163
Black Hawk	12,224	Fayette	555	Louisa	101	Scott	2,557
Boone	369	Floyd	563	Lucas	61	Shelby	101
Bremer	1,773	Franklin	232	Lyon	42	Sioux	173
Buchanan	982	Fremont	26	Madison	193	Story	1,375
Buena Vista	200	Greene	163	Mahaska	219	Tama	640
Butler	788	Grundy	875	Marion	435	Taylor	27
Calhoun	205	Guthrie	155	Marshall	943	Union	88
Carroll	431	Hamilton	351	Mills	88	Van Buren	40
Cass	138	Hancock	218	Mitchell	292	Wapello	334
Cedar	299	Hardin	654	Monona	58	Warren	897
Cerro Gordo	1,366	Harrison	87	Monroe	75	Washington	354
Cherokee	130	Henry	244	Montgomery	50	Wayne	38
Chickasaw	446	Howard	248	Muscatine	546	Webster	645
Clarke	57	Humboldt	235	O'Brien	162	Winnebago	296
Clay	301	Ida	87	Osceola	34	Winneshiek	545
Clayton	397	Iowa	278	Page	96	Woodbury	616
Clinton	624	Jackson	322	Palo Alto	193	Worth	182
Crawford	141	Jasper	528	Plymouth	240	Wright	295
Dallas	1,288	Jefferson	131				
Davis	55					TOTAL	68,510

Source: Alumni Association 10-9-2014

Post-Graduation Status of 2012-2013 and 2013-2014 Bachelor's Degree Recipients*

College	Graduates	No Information	Total Responding	Employed	Graduate Education	Undergrad Education
2012-13						
Business	448	65	383	300	35	0
Education	534	118	416	341	54	0
Humanities, Arts and Sciences	793	158	635	418	131	0
Social & Behavioral Sciences	507	114	393	248	84	0
TOTAL	2,282	455	1,827	1,307	304	0
			(1827 of 2282)	(1307 of 1827)	(304 of 1827)	(0 of 1827)
			80.1%	71.5%	16.6%	0.00%
2013-14						
Business	394	43	351	307	37	0
Education	508	47	461	390	48	0
Humanities, Arts and Sciences	802	102	700	513	165	0
Social & Behavioral Sciences	486	78	408	318	69	0
TOTAL	2,190	270	1,920	1,528	319	0
			(1920 of 2190)	(1528 of 1920)	(319 of 1920)	(0 of 1920)
			87.7%	79.6%	16.6%	0.00%

Source: Career Services

*Method: Data was collected through a survey of graduates attending commencement exercises and follow-up telephone calls.

Post-Graduation Status of 2012-13 and 2013-2014 Graduate Degree Recipients*

College	Graduates	No Information	Total Responding	Employed**	Continuing Education	Other
2012-2013						
Business	12	1	11	11	0	0
Education	85	2	83	79	2	2
Humanities, Arts and Sciences	69	4	65	59	6	0
Social & Behavioral Sciences	56	2	54	50	3	1
TOTAL	222	9	213	199	11	3
			(213 of 222)	(199 of 213)	(11 of 213)	(3 of 213)
			95.9%	93.4%	5.2%	1.4%
2013-2014						
Business	28	3	25	25	0	0
Education	102	7	95	93	2	0
Humanities, Arts and Sciences	95	4	91	84	7	0
Social & Behavioral Sciences	54	4	50	47	3	0
TOTAL	279	18	261	249	12	0
			(261 of 279)	(249 of 261)	(12 of 261)	(0 of 261)
			93.5%	95.4%	4.6%	0.0%

Source: CIO's Office and Institutional Research

*Method: Data was collected through a survey of graduates attending commencement exercises.

**87% of respondents Employed in Iowa

Undergraduate Plans for Further Education 2013-2014*

College	Completed Survey Item		Accepted to a Graduate/Professional Program		Currently Applying to Programs		Accepted to Another Undergraduate Program	
	N	%	N	%	N	%	N	%
TOTAL	1,629	100	242	100	200	100	23	100
Business Administration	316	19.40%	31	12.81%	12	6.00%	7	30.43%
Education	395	24.25%	36	14.88%	46	23.00%	4	17.39%
Humanities, Arts and Sciences	573	35.17%	124	51.24%	86	43.00%	5	21.74%
Social and Behavioral Sciences	345	21.18%	51	21.07%	56	28.00%	7	30.43%
			(242 of 1629)		(200 of 1629)		(23 of 1629)	
			14.86%		12.28%		1.41%	

Source: CIO's Office and Institutional Research

*December 2013 and May 2014 Graduating Senior Surveys

Graduate Plans for Further Education 2013-2014*

College	Completed Survey Item		Accepted to a Graduate/Professional Program		Currently Applying to Programs		No Definite Plans for Further Education	
	N	%	N	%	N	%	N	%
TOTAL	220	100.00%	16	7.27%	7	3.18%	195	88.64%
Business Administration	24	10.91%	3	18.75%	1	14.29%	20	10.26%
Education	81	36.82%	5	31.25%	1	14.29%	74	37.95%
Humanities, Arts and Sciences	75	34.09%	5	31.25%	2	28.57%	67	34.36%
Social and Behavioral Sciences	40	18.18%	3	18.75%	3	42.86%	34	17.44%
			(16 of 220)		(7 of 220)		(195 of 220)	
			7.3%		3.2%		88.6%	

Source: CIO's Office and Institutional Research

*December 2013 and May 2014 Graduate Program Surveys



Faculty & Staff



Faculty & Staff

UNI Workforce by Employment Categories 2004-2014

Categories	2004 N	2005 N	2006 N	2007 N	2008 N	2009 N	2010 N	2011 N	2012 N	2013 N	2014 N	5 Yr % Change	10 Yr % Change
Total Workforce**	1,769	1,776	1,781	1,791	1,890	1,883	1,842	1,894	1,801	1,819	1,861	-1.2	5.2
Annual Percent Change	-2.8	0.4	0.3	0.6	5.5	-0.4	-2.2	2.8	-4.9	1.0	2.3		
Executive/Managerial	98	92	94	102	110	112	98	94	95	93	97	-13.4	-1.0
Faculty-Tenure/Tenure-Track*	533	547	542	536	550	546	546	552	519	525	531	-2.7	-0.4
Faculty-Term/Renewable Term	-	-	-	-	40	40	41	63	37	36	47	17.5	-
Professional/Scientific	509	521	529	541	570	577	578	603	592	609	622	7.8	22.2
Secretarial/Clerical	293	285	281	277	275	272	256	264	254	249	249	-8.5	-15.0
Technical/Paraprofessional	25	33	31	31	30	27	24	22	20	20	21	-22.2	-16.0
Skilled Crafts	78	68	68	64	63	60	55	55	56	59	59	-1.7	-24.4
Service/Maintenance	233	230	236	240	252	249	244	241	228	228	235	-5.6	0.9

Source: Office of Human Resource Services

**Excludes temporary and second appointments

*Excludes some faculty with administrative appointments

NOTE: 2008-2014 data modified to include/separate Faculty-Term/Renewable Term employment category.

UNI Workforce Headcount and FTE by Employment Categories 2010-2014

Categories	2010		2011		2012		2013		2014	
	N	FTE	N	FTE	N	FTE	N	FTE	N	FTE
Total Workforce**	1,842	1,754.2	1,894	1,804.5	1,801	1,723.5	1,819	1,739.5	1,861	1,776.6
Annual Percent Change		-2.7		2.9		-4.5		0.9		2.1
Executive/Managerial	98	97.8	94	93.5	95	93.6	93	91.6	97	95.3
Faculty -Tenure/Tenure-Track*	546	520.9	552	533.3	519	504.1	525	509.6	531	515.3
Faculty -Term/Renewable Term*	41	39.5	63	61.3	37	36.0	36	36.0	47	46.5
Professional/Scientific	578	549.4	603	566.9	592	559.5	609	574.1	622	587.1
Secretarial/Clerical	256	240.4	264	249.8	254	241.8	249	236.6	249	235.8
Technical/Paraprofessional	24	23.5	22	21.6	20	19.6	20	19.6	21	19.8
Skilled Crafts	55	55.0	55	54.7	56	55.7	59	58.7	59	58.7
Service/Maintenance	244	227.7	241	223.4	228	213.2	228	213.3	235	218.1

Source: Office of Human Resource Services

**Excludes temporary

*Excludes some faculty with administrative appointments

UNI Workforce by Race/Ethnicity 2008-2014

Categories	2008		2009		2010		2011		2012		2013		2014	
	N	%	N	%	N	%	N	%	N	%	N	%	N	%
Total Workforce**	1,850		1,846		1,811		1,894		1,801		1,819		1,861	
Annual Percent Change		3.3		-0.2		-1.9		4.6		-4.9		1.0		2.3
American Indian/Alaskan Native	7	0.4	5	0.3	3	0.2	3	0.2	3	0.2	3	0.2	3	0.2
Asian/Pacific Islander	54	2.9	54	2.9	57	3.1	62	3.3	59	3.3	60	3.3	64	3.4
Black/African American	79	4.3	75	4.1	79	4.4	83	4.4	83	4.6	82	4.5	89	4.8
Hispanic/Latino	30	1.6	32	1.7	34	1.9	35	1.8	37	2.1	38	2.1	34	1.8
White	1,680	90.8	1,669	90.4	1,627	89.8	1,701	89.8	1,610	89.4	1,627	89.4	1,663	89.4
Native Hawaiian/Pacific Islander	.	-	1	0.1	1	0.1	1	0.1	1	0.1	1	0.1	1	0.1
Two or more	.	-	10	0.5	10	0.6	9	0.5	8	0.4	8	0.4	7	0.4
Unknown	0	0.0	0	0.0	0	0.0	0	0.0	0	0.0	0	0.0	0	0.0

Source: Office of Human Resource Services

**Excludes temporary and second appointments

NOTE: Fall 2009 semester Race/Ethnicity reporting was changed to implement the U.S. Department of Education guidelines.

UNI Workforce by Employment Categories and Race/Ethnicity Fall 2014

Fall 2014	American Indian/ Alaskan Native	Asian	Black/ African American	Hispanic	White	Native Hawaiian/ Pacific Islander	Two or more	Total
Total Workforce**	3	64	89	34	1,663	1	0	1,861
Executive/Managerial	0	1	6	0	89	0	1	97
Faculty-Tenure/Tenure-Track*	1	48	15	16	448	1	2	531
Faculty-Term/Renewable Term*	0	1	3	0	43	0	0	47
Professional/Scientific	1	8	32	10	567	0	4	622
Secretarial/Clerical	0	1	10	1	237	0	0	249
Technical/Paraprofessional	0	0	2	1	18	0	0	21
Skilled Crafts	0	1	1	1	56	0	0	59
Service/Maintenance	1	4	20	5	205	0	0	235

Source: Office of Human Resource Services

**Excludes temporary and second appointments

*Excludes some faculty with administrative appointments

UNI Workforce Headcount and FTE by Employment Categories and College Fall 2014

	Total						Humanities, Arts		Social and		No specific	
	University		Business		Education		and Sciences		Behavioral Sciences		College	
	N	FTE	N	FTE	N	FTE	N	FTE	N	FTE	N	FTE
Total Workforce**	1,861	1,776.4	124	119.2	246	229.7	374	359.9	145	140.4	972	927.1
Executive/ Managerial	97	95.3	7	7.0	7	7.0	19	19.0	9	9.0	55	53.3
Faculty-Tenure/ Tenure-Track*	531	515.3	49	46.5	124	119.0	241	234.6	101	99.4	16	15.8
Faculty-Term/ Renewable Term*	47	46.5	12	12.0	18	17.5	16	16.0	1	1.0	0	0.0
Professional/ Scientific	622	587.1	44	41.9	64	56.2	60	53.8	17	15.5	437	419.8
Secretarial/ Clerical	249	235.8	10	9.8	31	28.2	32	31.2	17	15.5	159	151.1
Technical/ Paraprofessional	21	19.8	2	2.0	1	0.9	4	3.3	0	0.0	14	13.6
Skilled Crafts	59	58.7	0	0.0	0	0.0	0	0.0	0	0.0	59	58.7
Service/ Maintenance	235	218.1	0	0.0	1	1.0	2	2.0	0	0.0	232	215.1

Source: Office of Human Resource Services

**Excludes temporary

*Excludes some faculty with administrative appointments



Budget & Finance

A man with glasses, wearing a dark suit, a light purple tie, and a patterned pocket square, stands in an office. He is smiling and looking to his left. His hands are clasped in front of him. He is wearing a gold watch on his left wrist. The background features a wooden bookshelf with papers and a doorway leading to another room. A green plant is visible to the right. The text "Budget & Finance" is overlaid in large white letters at the bottom.

Budget & Finance

Statement of Revenues, Expenses and Changes in Net Position, 2009-2014

	2009	2010	2011	2012	2013	2014
OPERATING REVENUES						
Tuition & Fees	\$77,260,450	\$81,866,942	\$87,554,233	\$91,725,487	\$90,441,952	\$89,744,628
Less Scholarship Allowance	-17,226,327	-21,202,125	-24,139,088	-25,482,683	-25,334,812	-25,424,620
Net Tuition & Fees	\$60,034,123	\$60,664,817	\$63,415,145	\$66,242,804	\$65,107,140	\$64,320,008
Federal Grants and Contracts	19,837,277	23,206,038	23,426,866	21,158,763	18,481,032	16,662,776
State and Local Grants and Contracts	2,944,973	2,634,637	2,270,886	2,182,000	2,102,578	2,053,427
Nongovernmental Grants and Contracts	6,513,851	5,850,936	5,097,077	4,675,205	3,613,871	3,320,222
Sales and Services of Educational Activities	5,774,668	7,687,525	7,998,091	8,237,789	4,937,703	6,403,218
Interest on Student Loans	191,117	227,371	237,471	238,655	245,250	226,660
Other Operating Revenue	607,771	2,868,615	992,772	501,925	726,808	562,860
Auxiliary Enterprises	54,859,014	55,193,227	56,156,143	58,742,116	56,344,034	57,101,721
Total Operating Revenues	\$150,762,794	\$158,333,166	\$159,594,451	\$161,979,257	\$151,558,416	\$150,650,892
OPERATING EXPENSES						
Instruction	\$76,484,933	\$71,168,267	\$78,570,575	\$80,291,964	\$82,764,796	\$86,505,596
Research	1,793,393	2,507,353	3,106,240	2,951,957	3,138,471	2,982,535
Public Service	31,097,013	31,497,042	25,396,214	22,152,465	24,325,404	25,052,740
Academic Support	22,729,813	23,894,367	25,413,636	24,855,928	21,731,295	22,489,903
Student Services	7,076,945	6,205,098	7,280,432	8,210,073	9,005,372	9,636,281
Institutional Support	29,348,125	26,713,928	23,535,960	29,683,285	26,441,182	26,066,570
Operation and Maintenance of Plant	22,185,917	20,177,365	21,884,211	20,441,078	21,423,526	21,166,860
Scholarships and Fellowships	5,712,482	6,760,209	7,150,385	6,470,804	4,983,383	3,381,347
Depreciation	13,975,476	14,461,097	15,270,614	16,105,032	16,095,251	18,040,748
Other Operating Expenses	513,815	172,245	137,397	288,141	281,264	193,945
Auxiliary Enterprises	50,077,862	48,447,239	48,858,614	50,787,350	50,975,515	50,774,324
Total Operating Expenses	\$260,995,774	\$252,004,210	\$256,604,278	\$262,238,077	\$261,165,459	\$266,290,849
Operating (Loss)	(110,232,980)	(93,671,044)	(97,009,827)	(100,258,820)	(109,607,043)	(115,639,957)

Statement of Revenues, Expenses and Changes in Net Assets, 2009-2014* (Continued)

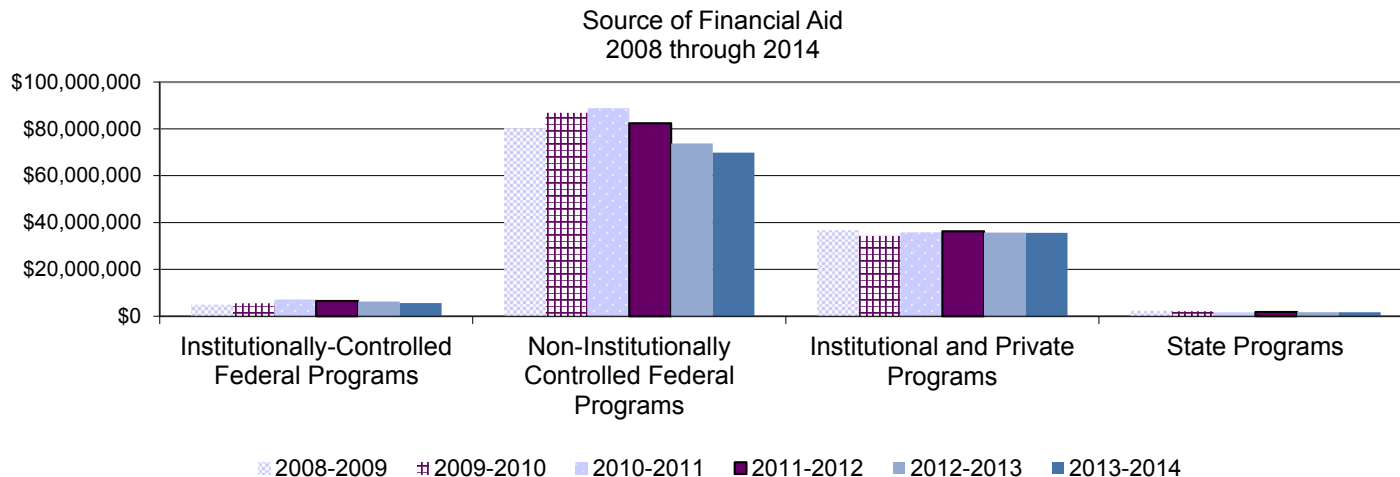
	2009	2010	2011	2012	2013	2014
NON-OPERATING REVENUES (EXPENSES)						
State Appropriations	\$ 101,686,218	\$ 97,861,782	\$ 82,683,919	\$ 77,765,014	\$ 87,662,815	\$ 96,910,269
Federal Grants and Contracts	7,654,501	10,913,391	12,213,433	11,466,659	10,860,223	10,270,339
Nonfederal Gifts, Grants and Contracts	3,384,744	3,332,794	3,179,412	3,701,740	3,101,932	3,827,149
Investment Income	(802,399)	2,762,824	2,785,806	1,683,261	1,464,982	3,644,079
Interest on Indebtedness	(5,742,508)	(6,274,646)	(5,924,235)	(6,258,688)	(5,529,028)	(5,463,353)
Miscellaneous Expense	(22,289)	(6,850)	-	(118,360)	(2,381,912)	(2,428,923)
Net Non-Operating Revenue	<u>\$106,158,267</u>	<u>\$108,589,295</u>	<u>\$94,938,335</u>	<u>\$88,239,626</u>	<u>\$95,179,012</u>	<u>\$106,759,560</u>
 (Loss) Before Other Revenues	 <u>\$ (4,074,713)</u>	 <u>\$ 14,918,251</u>	 <u>\$ (2,071,492)</u>	 <u>\$ (12,019,194)</u>	 <u>\$ (14,428,031)</u>	 <u>\$ (8,880,397)</u>
Capital Appropriations	\$5,751,912	\$5,927,801	\$5,808,082	\$7,016,578	\$14,082,733	\$14,177,141
Capital Gifts, Grants and Contracts	9,845,582	5,164,996	3,412,442	1,913,243	1,193,696	3,232,154
Total Other Revenues	<u>\$15,597,494</u>	<u>\$11,092,797</u>	<u>\$9,220,524</u>	<u>\$8,929,821</u>	<u>\$15,276,429</u>	<u>\$17,409,295</u>
 Change in Net Position	 <u>\$ 11,522,781</u>	 <u>\$ 26,011,048</u>	 <u>\$ 7,149,032</u>	 <u>\$ (3,089,373)</u>	 <u>\$ 848,398</u>	 <u>\$ 8,528,898</u>
 NET POSITION						
Total Net Position – July 1 Restated	<u>\$284,479,686</u>	<u>\$296,002,467</u>	<u>\$322,013,515</u>	<u>\$329,162,547</u>	<u>\$326,073,174</u>	<u>\$326,921,572</u>
Total Net Position – June 30	<u><u>\$296,002,467</u></u>	<u><u>\$322,013,515</u></u>	<u><u>\$329,162,547</u></u>	<u><u>\$326,073,174</u></u>	<u><u>\$326,921,572</u></u>	<u><u>\$335,450,470</u></u>

Source: *Financial Accounting and Reporting Services*

*Fiscal year runs July 1 through June 30.

Financial Aid Programs by Source of Aid 2008-2009 to 2013-2014

	2008-2009	2009-2010	2010-2011	2011-2012	2012-2013	2013-2014	1 Yr % Change	5 Yr % Change
TOTAL	\$124,372,381	\$128,829,476	\$133,627,082	\$127,078,624	\$117,518,136	\$112,826,725	-4.0%	-9.3%
Institutionally-Controlled Federal Programs	\$4,967,660	\$5,480,750	\$7,181,829	\$6,519,982	\$6,266,832	\$5,596,097	-10.7%	12.7%
Non-Institutionally Controlled Federal Programs	\$80,337,778	\$86,925,180	\$88,875,504	\$82,439,618	\$73,783,596	\$69,903,959	-5.3%	-13.0%
Institutional and Private Programs	\$36,737,956	\$34,287,847	\$35,871,303	\$36,323,315	\$35,737,813	\$35,632,554	-0.3%	-3.0%
State Programs	\$2,328,987	\$2,135,699	\$1,698,446	\$1,795,709	\$1,729,895	\$1,694,115	-2.1%	-27.3%



Source: Financial Aid Office

Student Financial Aid Programs 2011-2012 to 2013-2014

	2011-2012			2012-2013			2013-2014		
	Number of Awards	Value of Awards	Mean Award	Number of Awards	Value of Awards	Mean Award	Number of Awards	Value of Awards	Mean Award
TOTAL	41,225	\$127,078,624	\$3,083	39,109	\$117,515,136	\$3,005	36,503	\$112,826,725	\$3,091
Institutional & Private Gift Aid	12,497	\$ 22,008,551	\$1,761	12,745	\$ 21,797,657	\$1,710	12,453	\$ 21,860,724	\$1,755
Institutional Scholarships/Grants	8,129	13,646,797	\$1,679	8,127	13,081,900	\$1,610	7,529	12,780,359	\$1,697
Corporate/Private Scholarships	4,065	5,054,651	\$1,243	4,314	5,427,306	\$1,258	4,605	5,675,040	\$1,232
Athletic Scholarships	303	3,307,103	\$10,915	304	3,288,451	\$10,817	319	3,405,325	\$10,675
Federal & State Grants	5,641	\$17,322,672	\$3,071	5,343	\$ 16,510,080	\$3,090	5,331	\$ 15,527,090	\$2,913
Federal Pell Grant	3,219	11,439,862	\$3,554	3,022	10,867,166	\$3,596	2,807	10,250,573	\$3,652
Supplemental Education Opportunity Grant	478	433,756	\$907	473	433,623	\$917	529	489,402	\$925
TEACH Grant	643	2,433,576	\$3,785	624	2,280,838	\$3,655	566	1,718,098	\$3,036
ROTC	4	34,616	\$8,654	5	47,409	\$9,482	13	87,192	\$6,707
Other Federal Grant/Scholarship Programs	537	1,236,721	\$2,303	440	1,151,149	\$2,616	666	1,287,711	\$1,934
All Iowa Opportunity Scholarship	46	318,817	\$6,931	43	302,975	\$7,046	27	189,314	\$7,012
IMAGES Grant	193	332,200	\$1,721	197	332,200	\$1,686	197	332,200	\$1,686
Iowa Grant	107	98,804	\$923	110	88,877	\$808	94	88,432	\$941
Vocational Rehabilitation	140	317,356	\$2,267	143	334,376	\$2,338	140	341,533	\$2,440
Commission for the Blind	2	3,916	\$1,958	3	20,758	\$6,919	3	27,603	\$9,201
Other State Grants	174	165,035	\$948	191	160,235	\$839	197	243,974	\$1,238
National Guard	98	508,013	\$5,184	92	490,474	\$5,331	92	471,058	\$5,120
Loans	18,346	\$ 75,548,219	\$4,118	16,471	\$ 67,869,840	\$4,121	14,405	\$ 64,608,323	\$4,485
Federal Perkins	1,012	1,637,939	\$1,619	943	1,670,957	\$1,772	806	1,416,435	\$1,757
Direct Loans	16,839	70,887,684	\$4,210	14,965	62,792,219	\$4,196	13,091	59,538,766	\$4,548
Alternative Loans	495	3,022,596	\$6,106	563	3,406,664	\$6,051	508	3,653,122	\$7,191
Employment	4,741	\$ 12,199,182	\$2,573	4,550	\$ 11,337,559	\$2,492	4,314	\$ 10,830,588	\$2,511
Federal Work Study	433	613,605	\$1,417	465	679,876	\$1,462	418	628,607	\$1,504
Graduate Teaching, Research Assistantships	376	2,318,523	\$6,166	359	2,384,267	\$6,641	352	2,356,614	\$6,695
UNI Employment	3,932	9,267,054	\$2,357	3,726	8,273,416	\$2,220	3,544	7,845,367	\$2,214

Source: *Financial Aid Office*

Full-Time Undergraduate Student Tuition and Fees 1995-2014*

Academic Year	Academic Services	Activity	Athletics	Computing/ Technology	Facilities	General Student Services	Health Services	Health Facility	Surcharge	Total Mandatory Fees	UG Tuition	Total Tuition & Mandatory Fees
1995-96				\$88			\$84			\$172	\$2,386	\$2,558
1996-97				\$92			\$88			\$180	\$2,470	\$2,650
1997-98				\$96			\$90			\$186	\$2,566	\$2,752
1998-99				\$100			\$94			\$194	\$2,666	\$2,860
1999-00				\$104			\$98			\$202	\$2,786	\$2,988
2000-01				\$122			\$102			\$224	\$2,906	\$3,130
2001-02		\$92		\$126			\$106			\$324	\$3,116	\$3,440
2002-03		\$174		\$140			\$112			\$426	\$3,692	\$4,118
2003-04				\$150	\$180	\$102	\$116	\$26		\$574	\$4,342	\$4,916
2004-05				\$165	\$180	\$190	\$124	\$26		\$685	\$4,702	\$5,387
2005-06				\$116	\$198	\$222	\$144	\$32		\$712	\$4,890	\$5,602
2006-07				\$178	\$232	\$231	\$152	\$33	\$200	\$1,026	\$5,086	\$6,112
2007-08				\$187	\$237	\$223	\$158	\$33		\$838	\$5,352	\$6,190
2008-09				\$193	\$237	\$227	\$162	\$33		\$852	\$5,524	\$6,376
2009-10		\$35		\$200	\$235	\$215	\$166	\$29	\$100	\$980	\$5,756	\$6,736
2010-11		\$45		\$212	\$235	\$213	\$172	\$29		\$906	\$6,102	\$7,008
2011-12		\$60		\$229	\$235	\$213	\$176	\$29		\$942	\$6,408	\$7,350
2012-13		\$65		\$252	\$235	\$217	\$189	\$29		\$987	\$6,648	\$7,635
2013-14		\$67		\$258	\$220	\$258	\$203	\$31		\$1,037	\$6,648	\$7,685
2014-15		\$68		\$270	\$224	\$295	\$213	\$31		\$1,101	\$6,648	\$7,749

Source: Office of the Registrar

*All Non-College of Business Administration Resident Students

Full-Time Graduate Student Tuition and Fees 1995-2014*

Academic Year	Academic Services	Activity	Athletics	Computing/ Technology	Facilities	General Student Services	Health Services	Health Facility	Surcharge	Total Mandatory Fees	Grad Tuition	Total Tuition & Mandatory Fees
1995-96				\$88			\$84			\$172	\$2,834	\$3,006
1996-97				\$92			\$88			\$180	\$2,932	\$3,112
1997-98				\$96			\$90			\$186	\$3,046	\$3,232
1998-99				\$100			\$94			\$194	\$3,166	\$3,360
1999-00				\$104			\$98			\$202	\$3,308	\$3,510
2000-01				\$122			\$102			\$224	\$3,452	\$3,676
2001-02		\$92		\$126			\$106			\$324	\$3,702	\$4,026
2002-03		\$174		\$140			\$112			\$426	\$4,388	\$4,814
2003-04				\$150	\$180	\$102	\$116	\$26		\$574	\$5,038	\$5,612
2004-05				\$165	\$180	\$190	\$124	\$26		\$685	\$5,488	\$6,173
2005-06				\$116	\$198	\$222	\$144	\$32		\$712	\$5,708	\$6,420
2006-07				\$178	\$232	\$231	\$152	\$33	\$200	\$1,026	\$5,936	\$6,962
2007-08				\$187	\$237	\$223	\$158	\$33		\$838	\$6,246	\$7,084
2008-09				\$193	\$237	\$227	\$162	\$33		\$852	\$6,446	\$7,298
2009-10		\$35		\$200	\$235	\$215	\$166	\$29	\$100	\$980	\$6,716	\$7,696
2010-11		\$45		\$212	\$235	\$213	\$172	\$29		\$906	\$7,120	\$8,026
2011-12		\$60		\$229	\$235	\$213	\$176	\$29		\$942	\$7,476	\$8,418
2012-13		\$65		\$252	\$235	\$217	\$189	\$29		\$987	\$7,756	\$8,743
2013-14		\$67		\$258	\$220	\$258	\$203	\$31		\$1,037	\$7,756	\$8,793
2014-15		\$68		\$270	\$224	\$295	\$213	\$31		\$1,101	\$7,912	\$9,013

Source: Office of the Registrar

*Resident Student

Sponsored Project Proposals and Awards 2002-2014

Fiscal Year	Proposals (P)		Awards (A)	
	N	Amount (\$)	N	Amount (\$)
2002-03	231	40,056,854	177	28,835,568
2003-04	288	37,183,501	202	22,226,432
2004-05	257	44,271,909	207	32,203,943
2005-06	296	47,263,423	222	33,071,632
2006-07	280	41,819,467	222	27,003,729
2007-08	352	42,777,178	273	37,101,834
2008-09	273	56,854,498	227	45,767,242
2009-10	365	53,717,963	254	39,754,021
2010-11	353	56,922,612	250	42,018,391
2011-12	227	42,435,603	185	38,326,824
2012-13*	220	46,942,575	156	41,181,950
2013-14	192	40,216,946	145	40,830,739

Highlights from the 2014 funding:

Five National Science Foundation awards; the most UNI has had at one time. These federal grants were awarded for research in education, geography and physics.

\$16 million in sponsored funding was directed at outreach projects that impacted people, communities, and environments throughout Iowa.

\$20 million in sponsored funding supported student aid and strengthened academic programming at UNI.

\$13.9 million in sponsored funding was directed to projects that supported Pre-K through 12th grade education.

\$1.8 million of sponsored funding was spent on student wages and assistantships. This funding stream provided students with opportunities to learn and earn.

Source: Office of Research and *Sponsored Programs and UNI Foundation*

*Starting 2012-2013 award, amount includes UNI Foundation awards

A photograph of a modern library building. The building features a combination of red brick and light-colored concrete or stucco. Large, rectangular windows are set into the brickwork, some of which are reflecting the surrounding trees. The building has a multi-level design with cantilevered sections. In the foreground, there are several trees with green and yellowing leaves, suggesting an autumn setting. A concrete walkway leads up to the building, flanked by a metal railing. In the bottom right corner, there is a large, lush bush with green leaves and yellow and orange flowers. The sky is clear and blue.

Library

A photograph of three students in a library or study area. A young woman with long dark hair, wearing a yellow t-shirt, is smiling broadly at two other students. The student on the left is seen from the back, wearing a red and black plaid shirt. The student on the right is partially visible, wearing a purple shirt. They are sitting at a table with books and a purple water bottle. The background shows a white fan and wooden shelving.

Library

Library Statistics: 2009 - 2014

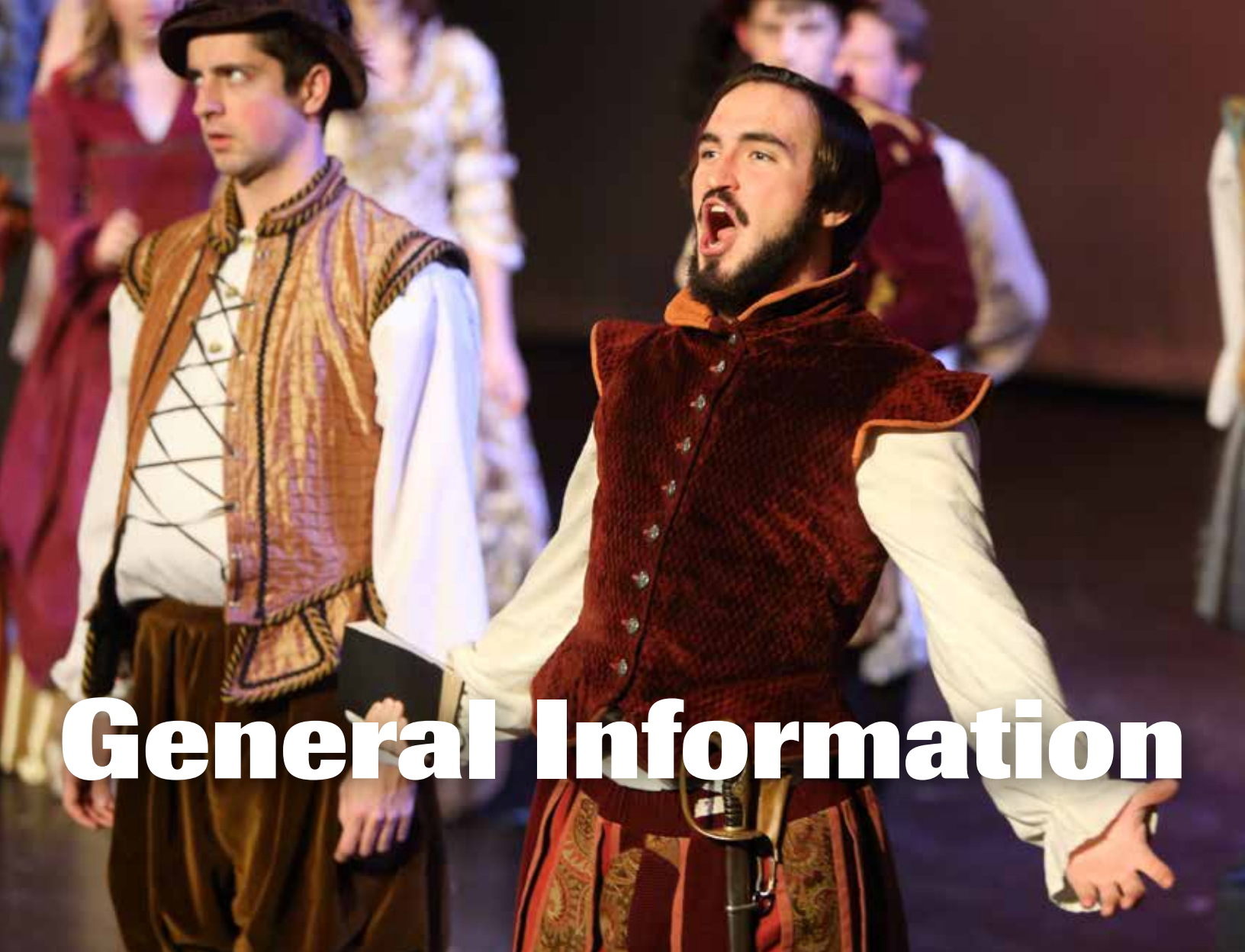
	2009	2010	2011	2012	2013	2014
PERSONNEL – FTE						
Library Faculty	19	19	19	20	18	20
Library Associates	12	11	11	11	11	10
Library Staff	24	24	24	21	20	21
Student Assistants	19	18	17	16	16	16
HOLDINGS/ACCESS						
Books	797,078	800,239	797,883	799,353	784,462	776,179
Periodicals	189,843	176,076	175,348	176,824	176,236	170,491
Electronic Books	39,022	46,304	77,877	14,245	205,638	262,564
Electronic Journals	44,174	44,350	52,924	50,909	59,434	65,717
Maps (sheets and folded)	41,453	41,425	41,438	41,567	40,949	40,957
Maps (electronic)						2,799
Government Documents (all)						
Paper	265,026	262,832	252,048	230,393	202,254	189,467
Microform	303,034	303,508	303,085	302,709	301,405	300,610
CD/DVD/Floppy	3,369	3,416	3,425	3,430	2,416	544
Subscriptions						
Periodicals (paper, w/ newspapers)	2,051	1,534	1,494	1,237	1,188	1,188
Periodicals (electronic, w/ newspapers)	1,231	1,527	1,590	1,198	1,114	1,114
Databases	148	140	96	123	151	184
Audiovisuals						
Sound recordings	16,797	17,330	17,923	18,155	18,516	19,289
Films and Videotapes	6,563	6,864	7,954	8,393	9,116	8,217
Other nonprint materials	9,663	9,583	9,583	3,634	2,946	2,853

Library Statistics: 2009 - 2014 (Continued)

	2009	2010	2011	2012	2013	2014
Microform Units (not govt. docs.)						
Microfilm	29,754	29,917	29,799	29,975	30,133	30,007
Microfiche	774,089	774,574	774,279	774,726	775,198	774,908
Microcards	17,076	17,076	17,076	17,076	17,076	14,076
Archives & Manuscripts (linear feet)	5,033	5,114	5,265	5,329	5,616	5,616
SERVICES						
Building Entrance Count	460,455	487,375	495,971	519,307	446,840	408,445
Circulation (first time loans)	166,380	161,881	140,130	134,571	104,980	85,307
Reference Transactions (all)	11,714	12,433	12,217	12,994	10,916	9,455
Interlibrary Loan						
Borrowed	5,641	5,055	4,357	3,847	3,691	3,555
Loaned	6,291	6,399	5,663	5,203	4,806	4,994
Library Instruction						
Classes	330	295	300	336	316	390
Persons served	7,465	6,128	6,746	6,400	5,725	7,098
Document Delivery						
On Campus	914	*	*	*	*	13
Off Campus	784	573	377	649	498	236

Source: *The Rod Library*

*Statistic No Longer Captured



General Information



General Information

International Students by Country: Fall 2014*

Country	N	Country	N	Country	N	Country	N
Armenia	1	Ghana	3	Netherlands	1	Venezuela	2
Australia	2	Honduras	1	New Zealand	2	Vietnam	9
Bahamas	1	Hong Kong	16	Nigeria	7	Zambia	1
Bangladesh	6	Hungary	2	Oman	2	Zimbabwe	2
Belgium	1	India	22	Pakistan	10		
Bosnia & Herzegovina	2	Indonesia	1	Peru	1		
Brazil	63	Iran	3	Poland	1		
Canada	10	Iraq	1	Russia	7		
Chile	6	Japan	16	Rwanda	2		
China	138	Jordan	1	Saudi Arabia	197		
Columbia	3	Kazakhstan	1	Scotland	1		
Costa Rica	1	Kenya	6	Sierra Leone	1		
Cyprus	1	Korea, Republic of	6	Singapore	1		
Ecuador	1	Kuwait	2	Spain	2		
Egypt	3	Malaysia	12	Taiwan	1		
El Salvador	1	Mali	1	Turkey	3		
Ethiopia	7	Mexico	5	Uganda	1		
Fmr Yugoslav Rep of							
Macedonia	1	Myanmar	1	Ukraine	1	TOTAL	626
France	5	Namibia	1	United Kingdom	4		
Germany	2	Nepal	10	Unknown Country	1	Number of Countries	64

Source: Office of the Registrar

*Includes undergraduates and graduates

International Students by College 2008-2014*

College	2008	2009	2010	2011	2012	2013	2014	1 Yr % Change	5 Yr % Change
TOTAL	464	453	480	488	454	520	626	20.4	12.1
Annual Percent Change	-1.7	-2.4	6.0	1.7	-7.0	6.6	37.9		
Business Administration	125	143	154	167	163	192	215	12.0	50.3
Education	38	29	29	35	43	58	63	8.6	117.2
Humanities, Arts and Sciences	-	-	-	178	145	152	172	13.2	-
Social and Behavioral Sciences	24	18	26	18	25	32	37	15.6	105.6
No Specific College	119	90	113	90	78	86	139	61.6	54.4

Source: Office of the Registrar

*Includes undergraduates and graduates

Top 5 Countries of Origin for International Students 2003-2014

Fall	Country	N	Country	N	Country	N	Country	N	Country	N	Total International Students
2003	Russia	51	Japan	43	Hong Kong	28	South Korea	25	PR China	21	384
2004	Russia	50	Japan	34	India	21	Peru	16	PR China	15	351
									South Korea	15	
2005	Russia	61	Hong Kong	33	Japan	30	South Korea	26	India	23	422
					Saudi Arabia	30					
2006	Saudi Arabia	70	Russia	51	Hong Kong	37	China	28	India	23	432
2007	Saudi Arabia	72	Russia	50	China	43	India	38	Hong Kong	24	472
2008	China	82	Saudi Arabia	71	Hong Kong	45	India	37	Russia	34	464
2009	Saudi Arabia	106	China	85	India	35	Russia	26	Hong Kong	17	453
2010	Saudi Arabia	146	China	100	India	27	Russia	23	South Korea	16	480
2011	Saudi Arabia	180	China	89	Russia	24	India	21	Hong Kong	18	488
2012	Saudi Arabia	163	China	88	India	21	Russia	16	Hong Kong	15	454
2013	Saudi Arabia	183	China	127	Hong Kong	19	India	19	Japan	14	520
2014	Saudi Arabia	197	China	138	Brazil	63	India	22	Hong Kong	16	626
									Japan	16	

Source: Office of the Registrar

Study Abroad Destinations: Fall 13/Spring 14/Summer 14*

Country	N	Country	N	Country	N
Australia	4	Guatemala	15	Puerto Rico	23
Austria	1	Hungary	27	Romania	27
Brazil	17	India	4	Russia	1
Chile	19	Ireland	109	Scotland	25
China	37	Italy	69	South Africa	32
Costa Rica	13	Japan	4	South Korea	5
Denmark	1	Kenya	1	Spain	17
England	155	Netherlands	1	Taiwan	7
France	67	New Zealand	2	Tanzania	10
Germany	3	Nicaragua	25	Thailand	1
Ghana	1	Philippines	1	Turkey	2
Greece	50	Poland	3	Wales	36
				Total	815
				Number of Countries	36

Source: *Study Abroad Center*

*Includes undergraduates and graduates

**Considered students traveling to multiple countries

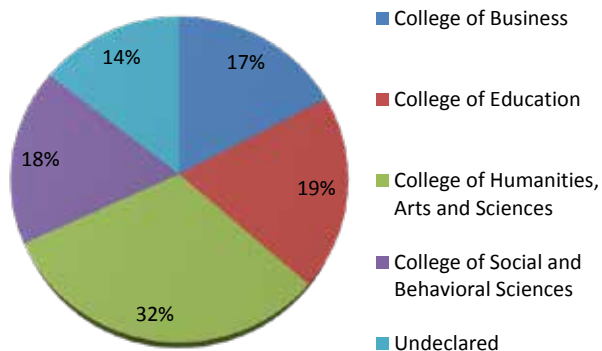
*** Does not consider Camp Adventure, International Student Teaching, Athletics nor School of Music

UNI Study Abroad Students by College and Classification: Fall 13/Spring 14/Summer 14*

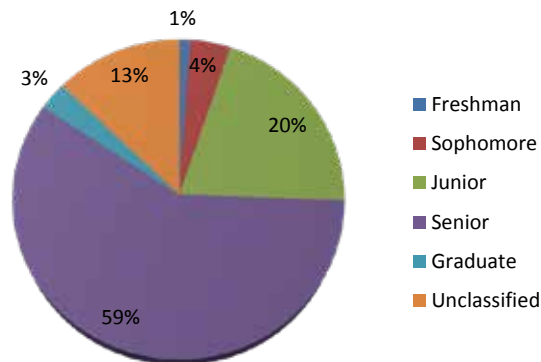
College	N
College of Business	97
College of Education	109
College of Humanities, Arts and Sciences	178
College of Social and Behavioral Sciences	99
Undeclared	81
Total	564

Classification	N
Freshman	6
Sophomore	23
Junior	115
Senior	332
Graduate	16
Unclassified	72
Total	564

Students by College



Students by Classification



Source: Study Abroad Center

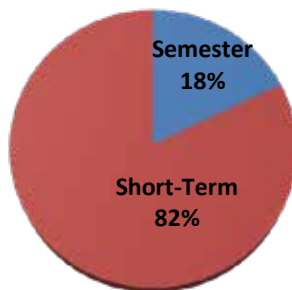
*Includes undergraduates and graduates

** Does not consider Camp Adventure, International Student Teaching, Athletics nor School of Music

UNI Study Abroad Students by Term*

Type of Program	Fall '13	Spring '14	Summer '14	Total
Semester	60	41		101
Short-Term	28	10	428	466
Total				567

Students by Type of Program



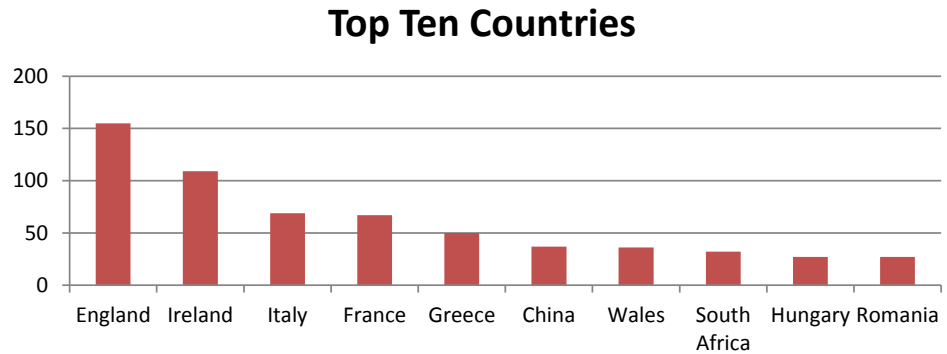
Source: Study Abroad Center

*Includes undergraduates and graduates

** Does not consider Camp Adventure, International Student Teaching, Athletics nor School of Music

UNI Study Abroad Top Ten Countries: Fall 13/Spring 14/Summer 14

Top 10 Countries	N
England	155
Ireland	109
Italy	69
France	67
Greece	50
China	37
Wales	36
South Africa	32
Hungary	27
Romania	27
Total	609

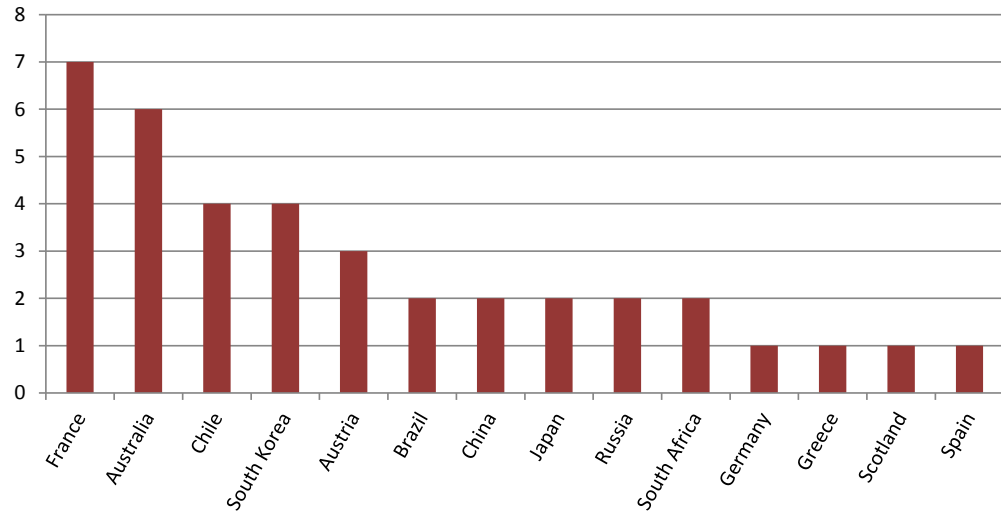


Source: *Study Abroad Center*

** Does not consider Camp Adventure, International Student Teaching, Athletics nor School of Music

Incoming International Exchange Students by Country: Fall 12/Spring 13/Summer 13

Country	N
France	7
Australia	6
Chile	4
South Korea	4
Austria	3
Brazil	2
China	2
Japan	2
Russia	2
South Africa	2
Germany	1
Greece	1
Scotland	1
Spain	1



Total 38

Number of Countries 21

Source: *Study Abroad Center*

*Includes undergraduates and graduates

** Does not consider Camp Adventure, International Student Teaching, Athletics nor School of Music

UNI Students Studying Abroad by Region*

Region: Fall 2001 - Fall 2014	N
Europe	2,910
Asia	640
Central America	831
South America	259
Africa	265
Oceania	100
Caribbean	20
Middle East	21
North America	23
Total	5,069

Region: Fall '13/Spring '14/Summer '14	N
Europe	343
Asia	59
Central America	53
South America	36
Africa	44
Oceania	6
Caribbean	0
Middle East	0
North America	23
Total	564

Source: *Study Abroad Center*

*Includes undergraduates and graduates

** Does not consider Camp Adventure, International Student Teaching, Athletics nor School of Music

Top 5 Countries for UNI Study Abroad Students FY 2002-FY 2014

FY	Country	Top 1	Country	Top 2	Country	Top 3	Country	Top 4	Country	Top 5
2000-2001	Spain	56	Russia	33	Mexico	22	Australia	19	Wales	14
2001-2002	Mexico	27	Spain	25	Russia	17	Austria	15	Poland	11
2002-2003	Spain	36	Mexico	32	Poland	26	Australia	20	Russia	16
2003-2004	France	53	Australia	33	Spain	28	Mexico	22	Russia	15
2004-2005	France	64	Spain	54	Mexico	35	Russia	25	Chile	20
2005-2006	Spain	59	China	40	Mexico	31	Australia	24	Russia	24
2006-2007	France	72	Spain	70	Mexico	36	Nicaragua	32	England	27
2007-2008	Nicaragua	52	Spain	46	England	43	France	32	Mexico	32
2008-2009	England	61	Greece	54	Nicaragua	52	Spain	52	Ireland	31
2009-2010	England	98	Italy	92	Spain	67	Ireland	62	France	54
2010-2011	Germany	302	Japan	145	Italy	119	England	112	Ireland	72
2011-2012	Germany	255	Japan	147	England	106	Italy	98	Ireland	63
2012-2013	Germany	235	Japan	140	England	131	Italy	98	France	75
2013-2014	England	155	Ireland	109	Italy	69	France	67	Greece	50

Source: Study Abroad Center

*Includes undergraduates and graduates

**For multiple destinations in one program, total count was included for all countries

** Does not consider Camp Adventure, International Student Teaching, Athletics nor School of Music

UNI Services to Businesses, Communities and Local Government

Divisions	Location	Telephone	Web Site
Center for Energy and Environmental Education	Cedar Falls, IA	319-273-2573	www.uni.edu/ceee
Geoinformatics Training, Research, Education and Extension	Cedar Falls, IA	319-273-3877	www.geotree.uni.edu
Heartland Economic Development Course	Cedar Falls, IA	319-273-6941	www.bcs.uni.edu/heartland
Institute for Decision Making	Cedar Falls, IA	319-273-6069	www.idm.uni.edu
Iowa Waste Reduction Center	Cedar Falls, IA	319-273-8905	www.iwrc.org
John Pappajohn Entrepreneurial Center	Cedar Falls, IA	319-273-5732	www.bcs.uni.edu/jpec
Materials Innovation Service	Cedar Falls, IA	319-273-3689	www.rttc.com
New Iowans Center	Cedar Falls, IA	319-273-3029	www.bcs.uni.edu/ICILI
Recycling and Reuse Technology Transfer	Cedar Falls, IA	319-273-7499	www.rttc.com
Regional Business Center	Cedar Falls, IA	319-273-4335	www.uni.edu/rbc
Strategic Marketing Services	Cedar Falls, IA	319-273-2886	www.sms.uni.edu
Sustainable Tourism and Environmental Program	Cedar Falls, IA	319-273-6840	www.uni.edu/step
Tallgrass Prairie Center	Cedar Falls, IA	319-273-3836	www.tallgrassprairiecenter.org
UNI Metal Casting Center	Cedar Falls, IA	319-273-2311	www.mcc.uni.edu

Source: *Business and Community Services*

UNI Carnegie Classification

Classification	Category
Basic	Master's L: Master's Colleges and Universities (larger programs)
Size and Setting	L4/R: Large four-year, primarily residential
Enrollment Profile	VHU: Very high undergraduate
Undergraduate Profile	FT4/S/HTI: Full-time four-year, selective, higher transfer-in
Undergraduate Instructional Program	Prof + A&S/SGC: Profession plus arts & sciences, some graduate coexistence
Graduate Instructional Program	Doc/Prof: Doctoral, professions dominant

This institution participated in the following elective classification:

Community Engagement	Curricular Engagement and Outreach and Partnerships
Level	4-year or above
Control	Public
Enrollment (Fall 2004)	12,927

Source: *The Carnegie Foundation for the Advancement of Teaching* - classification based on data from 2003 and 2004

NOTES:
 Graduate program classification is based on fewer than 50 degrees.
 Undergraduate program classification: the percentage is within 5 points of a category border (arts & sciences direction).

Apparent inconsistencies between basic and instructional program classifications are due to degree thresholds used in the basic classification.

Iowa Economic Impact Profile

Item	Details
Discretionary Spending and Tourism	11,928 current students
Provide Higher Ed	<p>Approximately 90% of students are from Iowa</p> <p>Credit courses were offered in 98 counties and 582 cities and towns</p> <p>32 off-campus degree and certification programs were offered</p> <p>14,481 enrollment in Continuing and Distance Education Credit courses</p> <p>15,276 non-credit educational activities</p>
Business Services and Community Impact	<p>Total number community service hours engaged in by UNI students is 563,889 (2012-2013)</p> <p>UNI provided service in all 99 counties to nearly 1,950 unique business, community and local government clients; another 28,000 individuals were engaged in the MyEntre.Net/ IA SourceLink entrepreneurial support system.</p>

Source: CIO's Office and Institutional Research

A woman with a purple mohawk hairstyle and a leopard-print headband is seated at a table. She is wearing a grey sweatshirt and a pink and grey patterned scarf. She is looking to her right with a slight smile. In front of her is a white name tag that reads "Tajja" and "Gabber Pug". There is a white coffee cup and some papers on the table. A black bag is visible to her right.

Peer Institutions

An aerial photograph of a university campus. In the foreground, a large green lawn is partially covered with shadows from trees. A winding path leads through the lawn. To the left, a large brick building with a red roof and a glass-enclosed staircase is visible. In the center-right, a tall brick clock tower stands next to a modern building with large glass windows. The background is filled with more campus buildings and a dense forest of trees with vibrant autumn foliage in shades of yellow, orange, and red. The overall scene is bright and sunny.

Peer Institutions

Undergraduate Enrollment and Costs 2012-2013

Institution	Location	UG	Student-	In-State	Out-of-State
			to-Faculty Ratio	Tuition & Fees	Tuition & Fees
Northern Arizona University	Flagstaff, AZ	21,768	21/1	\$22,254	\$22,254
California State University	Fresno, CA	19,719	26/1	\$20,756	\$32,414
Illinois State University	Normal, IL	18,257	19/1	\$25,416	\$32,706
Indiana State University	Terre Haute, IN	10,076	19/1	\$20,226	\$29,772
University of Northern Iowa	Cedar Falls, IA	10,655	16/1	\$19,418	\$28,504
Central Michigan University	Mt. Pleasant, MI	21,332	22/1	\$21,646	\$34,366
University of Minnesota	Duluth, MN	10,346	19/1	\$23,085	\$25,750
University of North Carolina	Greensboro, NC	15,039	17/1	\$17,706	\$31,504
Ohio University	Athens, OH	22,685	19/1	\$23,948	\$32,912
University of North Texas	Denton, TX	30,593	23/1	\$19,523	\$27,947
University of Wisconsin	Eau Claire, WI	10,520	21/1	\$18,467	\$26,040

Source: *IPEDS*

UG-Fall 2012 undergraduate enrollment

The cost here refers to the total dollar amount of living on campus thus including room and board.

Faculty by Rank 2012-2013

Institution	Location	Associate Professor		Assistant Professor
		Professor	Professor	Professor
Northern Arizona University	Flagstaff, AZ	263	205	175
California State University	Fresno, CA	227	149	111
Illinois State University	Normal, IL	214	236	352
Indiana State University	Terre Haute, IN	122	142	96
University of Northern Iowa	Cedar Falls, IA	148	178	112
Central Michigan University	Mt. Pleasant, MI	291	149	174
University of Minnesota	Duluth, MN	79	149	159
University of North Carolina	Greensboro, NC	161	249	119
Ohio University	Athens, OH	215	307	224
University of North Texas	Denton, TX	286	297	201
University of Wisconsin	Eau Claire, WI	133	108	139

Source: *IPEDS*

2012-2013 Academic year; full-time faculty on both 9/10 month and 11/12 month contract length

Faculty Average Salaries by Rank 2012-2013

Institution	Location	Associate Professor		Assistant Professor		All Ranks
		Professor	Professor	Professor	Instructor	
Northern Arizona University	Flagstaff, AZ	\$96,102	\$69,255	\$57,834	\$39,204	\$69,255
California State University	Fresno, CA	\$91,953	\$70,452	\$63,207	N/A	\$72,648
Illinois State University	Normal, IL	\$90,540	\$71,001	\$58,311	N/A	\$69,651
Indiana State University	Terre Haute, IN	\$83,970	\$62,973	\$57,141	\$39,969	\$62,334
University of Northern Iowa	Cedar Falls, IA	\$87,705	\$70,245	\$61,299	\$53,406	\$70,470
Central Michigan University	Mt. Pleasant, MI	\$98,010	\$74,781	\$65,142	\$51,651	\$73,728
University of Minnesota	Duluth, MN	\$91,872	\$71,208	\$57,258	\$47,331	\$65,475
University of North Carolina	Greensboro, NC	\$107,424	\$76,734	\$66,186	\$55,062	\$71,649
Ohio University	Athens, OH	\$98,757	\$75,312	\$61,326	\$42,003	\$73,809
University of North Texas	Denton, TX	\$118,782	\$92,322	\$76,131	\$19,791	\$82,656
University of Wisconsin	Eau Claire, WI	\$72,216	\$60,291	\$59,040	\$45,297	\$60,543

Source: *IPEDS*

2012-2013 Academic year; full-time faculty

Undergraduates Receiving Student Financial Aid: 2012-2013*

Institution	Location	Federal Grants**		State/Local Grants		Institutional Grants		Receiving Any Financial Aid
		N	\$	N	\$	N	\$	%
Northern Arizona University	Flagstaff, AZ	1,512	4,427	219	2,346	2,509	5,945	83
California State University	Fresno, CA	1,883	4,859	1,750	2,320	1,513	5,731	80
Illinois State University	Normal, IL	836	4,490	895	6,090	1,054	4,548	79
Indiana State University	Terre Haute, IN	1,414	4,296	1,066	5,294	1,905	2,964	92
University of Northern Iowa	Cedar Falls, IA	506	4,152	101	4,271	987	3,129	87
Central Michigan University	Mt. Pleasant, MI	1,181	4,015	443	751	2,229	6,571	92
University of Minnesota	Duluth, MN	468	4,372	637	3,638	1,133	3,197	83
University of North Carolina	Greensboro, NC	1,190	4,281	1,340	3,037	1,337	2,670	80
Ohio University	Athens, OH	991	4,233	621	964	2,031	4,078	79
University of North Texas	Denton, TX	1,728	4,406	2,156	4,028	2,363	3,939	89
University of Wisconsin	Eau Claire, WI	530	4,326	502	1,879	853	1,105	82

Source: *Integrated Postsecondary Education Data System (IPEDS)*

*Full-time, first-time, degree/certificate-seeking undergraduate students receiving financial aid.

\$: Average amount of aid received.

**Federal grant aid plus other federal grant aid (new in 2007-2008)

Retention and Graduation Rates Fall 2012 and 2013

Institution	Location	2012	2013
		Retention* %	Retention** %
Northern Arizona University	Flagstaff, AZ	76	72
California State University	Fresno, CA	83	83
Illinois State University	Normal, IL	82	82
Indiana State University	Terre Haute, IN	61	64
University of Northern Iowa	Cedar Falls, IA	81	83
Central Michigan University	Mt. Pleasant, MI	76	77
University of Minnesota	Duluth, MN	75	75
University of North Carolina	Greensboro, NC	76	74
Ohio University	Athens, OH	79	79
University of North Texas	Denton, TX	76	75
University of Wisconsin	Eau Claire, WI	83	82

Source: *Integrated Postsecondary Education Data System (IPEDS)*

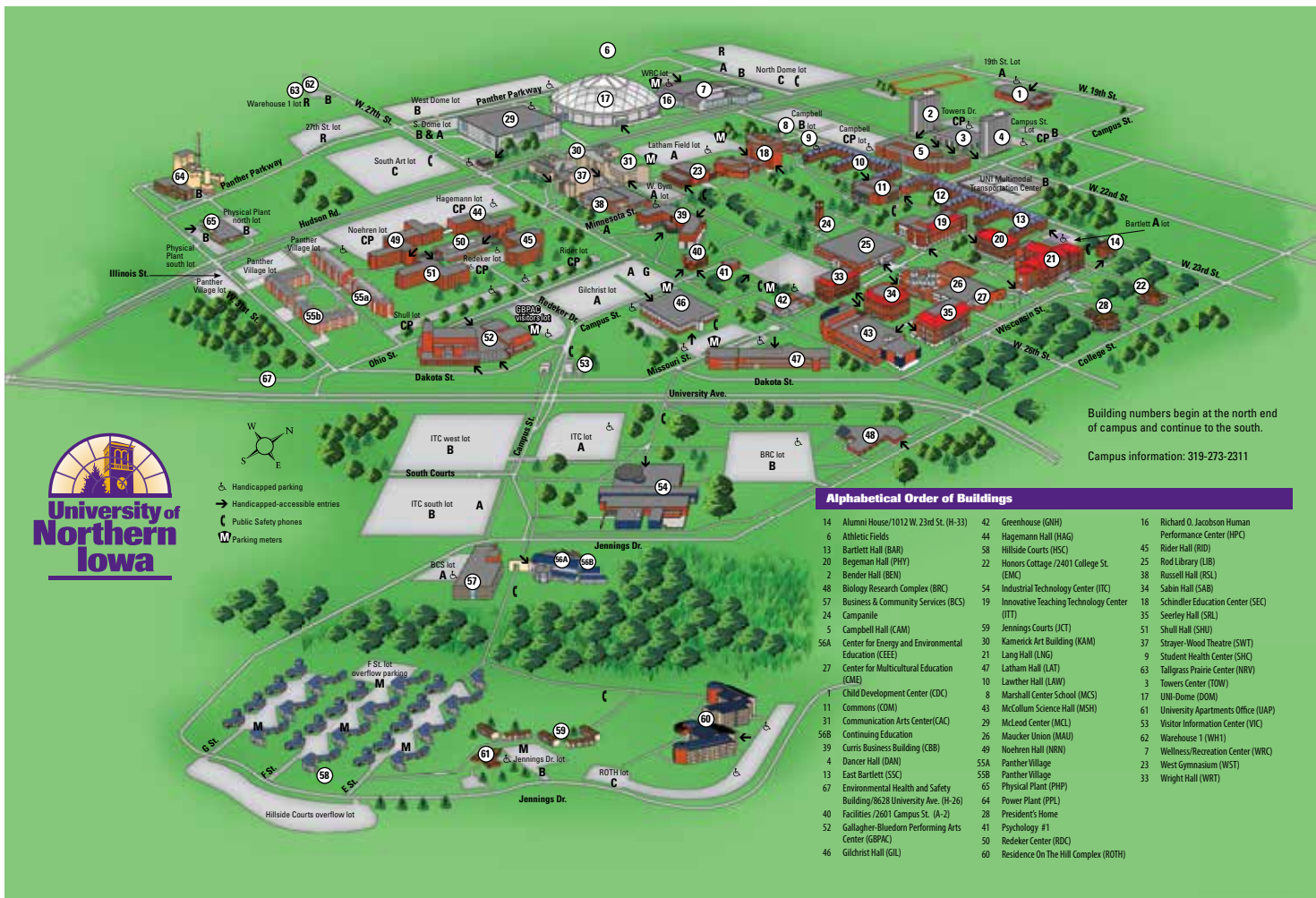
*Full-time retention rate, 2012-13 academic year

**Full-time retention rate, 2013-14 academic year

Degrees Granted In Academic Year 2012-2013

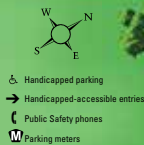
Institution	Location	Baccalaureate			Total
		(Bachelor's)	Master's	Doctorates	
Northern Arizona University	Flagstaff, AZ	4,427	1,423	100	5,950
California State University	Fresno, CA	3,702	831	49	4,582
Illinois State University	Normal, IL	4,438	722	51	5,211
Indiana State University	Terre Haute, IN	1,466	543	59	2,068
University of Northern Iowa	Cedar Falls, IA	2,349	496	30	2,875
Central Michigan University	Mt. Pleasant, MI	3,901	1,861	97	5,859
University of Minnesota	Duluth, MN	1,970	175	13	2,158
University of North Carolina	Greensboro, NC	2,979	909	134	4,022
Ohio University	Athens, OH	5,985	1,245	273	7,503
University of North Texas	Denton, TX	6,365	1,893	212	8,470
University of Wisconsin	Eau Claire, WI	2,129	155	9	2,293

Source: *Integrated Postsecondary Education Data System (IPEDS)*



Building numbers begin at the north end of campus and continue to the south.

Campus information: 319-273-2311



Alphabetical Order of Buildings

14 Alumni House/1012 W. 23rd St. (H-33)	42 Greenhouse (GNI)	16 Richard O. Jacobson Human Performance Center (HPC)
6 Athletic Fields	44 Hagemann Hall (HAG)	45 Rider Hall (RID)
58 Bartlett Hall (BAR)	58 Hillside Courts (HSC)	25 Rod Library (LUB)
20 Begeman Hall (PHY)	22 Honors Cottage/2401 College St. (EMC)	38 Russell Hall (RSL)
2 Bender Hall (BEN)	54 Industrial Technology Center (ITC)	34 Sabin Hall (SAB)
48 Biology Research Complex (BRC)	19 Innovative Teaching Technology Center (ITT)	18 Schindler Education Center (SEC)
57 Business & Community Services (BCS)	59 Jennings Courts (JCT)	35 Seerley Hall (SRL)
24 Campanile	30 Kamerick Art Building (KAM)	51 Shull Hall (SHU)
5 Campbell Hall (CAM)	21 Lang Hall (LNG)	37 Strayer-Wood Theatre (SWT)
56A Center for Energy and Environmental Education (CEE)	47 Latham Hall (LAT)	9 Student Health Center (SHC)
27 Center for Multicultural Education (CME)	10 Lawther Hall (LAW)	63 Tallgrass Prairie Center (NRV)
11 Child Development Center (CDC)	8 Marshall Center School (MCS)	3 Towers Center (TOW)
31 Commons (COM)	43 McCallum Science Hall (MSH)	17 UNI-Dome (DOM)
11 Communication Arts Center (CAC)	29 McLeod Center (MCL)	61 University Apartments Office (UAP)
56B Continuing Education	26 Maucker Union (MAU)	53 Visitor Information Center (VIC)
39 Curris Business Building (CBB)	49 Noehren Hall (NRN)	62 Warehouse 1 (WH1)
4 Dancer Hall (DAN)	55A Panther Village	7 Wellness/Recreation Center (WRC)
13 East Bartlett (SEC)	55B Panther Village	23 West Gymnasium (WST)
67 Environmental Health and Safety Building/8628 University Ave. (H-26)	65 Physical Plant (PHP)	33 Wright Hall (WRT)
40 Facilities/2601 Campus St. (A-2)	64 Power Plant (PPL)	
52 Gallagher-Blueborn Performing Arts Center (GBPAC)	28 President's Home	
46 Gilchrist Hall (GIL)	41 Psychology #1	
	50 Redeker Center (RDC)	
	60 Residence On The Hill Complex (ROTH)	



CIO's Office and Office of Institutional Research

University of Northern Iowa | Cedar Falls, Iowa 50614-0005
319-273-3050