

2010

University of Northern Iowa Fact Book, 2010-2011

University of Northern Iowa

Let us know how access to this document benefits you

Copyright ©2010 University of Northern Iowa.

Follow this and additional works at: https://scholarworks.uni.edu/ire_factbook



Part of the [Higher Education Commons](#)

Recommended Citation

University of Northern Iowa, "University of Northern Iowa Fact Book, 2010-2011" (2010). *University of Northern Iowa Fact Book*. 8.

https://scholarworks.uni.edu/ire_factbook/8

This Newsletter is brought to you for free and open access by the Institutional Effectiveness & Planning at UNI ScholarWorks. It has been accepted for inclusion in University of Northern Iowa Fact Book by an authorized administrator of UNI ScholarWorks. For more information, please contact scholarworks@uni.edu.

Offensive Materials Statement: Materials located in UNI ScholarWorks come from a broad range of sources and time periods. Some of these materials may contain offensive stereotypes, ideas, visuals, or language.



2010-2011

Fact Book

Office of Institutional Research



The University of Northern Iowa offers a world-class university education, providing personalized experiences and creating a lifetime of opportunities.

Message from President Benjamin J. Allen

I'm delighted to present you with the University of Northern Iowa's (UNI) 2010-2011 Fact Book. This compilation of facts and statistics about the university community and academic programs illustrates our uncompromising commitment to providing a high-quality education through premier undergraduate liberal arts-based education.

While the series of state budget cuts to the regent universities has taken a toll on the university community, they also present us with opportunities to reflect and reaffirm our commitment to academic excellence, community engagement, sustainability and service to Iowa. In fact, UNI has significant news to report for 2010.

For the second year in a row, UNI was named to the Presidential Higher Education Community Service Honor Roll, the highest federal recognition a school can achieve for its commitment to service-learning and civic engagement.

More good news came this fall as UNI marked its fourth straight year of enrollment growth. Our fall enrollment was 13,201. The net enrollment of admitted students (49.5 percent) was a record high. And our international-student enrollment is the largest in 10 years, at 480. The fact that more students are choosing UNI, and discovering success here, affirms the quality and relevance of our academic programs.

In presenting this data, I'm proud UNI continues to offer a high-quality university education that students can experience in a very personal manner, setting the stage for lifelong achievement and community engagement..

Sincerely,

Benjamin J. Allen
President, University of Northern Iowa





**University of
Northern
Iowa**

Fact Book

2010-2011

Office of Institutional Research

**University of Northern Iowa
Cedar Falls IA 50614-0005**

Table of Contents

Message from President Benjamin Allen	Inside front cover	First Major Only by College and Level: Fall 2004-2010	26
Mission Statement	1	Annual Degrees Awarded by Level 2000-2010	27
UNI Organizational Chart.....	2	Degrees Granted by College 2009-2010	28
UNI Administration.....	3	Undergraduate Retention and Graduation Rates 1992-2010	29
Definitions of Terms Used	4	Continuing Education Credit Enrollment Trends 2000-2010	30
Calendar	6	Continuing Education Courses Offered 2000-2010	31
		Web-based Learning Management System (LMS) 2007-2010.....	32
		Fall Semester Residence Hall Occupancy by Gender and Level 2000-2010	33
New Students			
Fall 2010 New Students.....	7	Alumni	
New Student Applications, Admissions, and Enrolled 2000-2010	8	Total Living Alumni by College 2004-2010	35
New Students Enrolled by Residence 2000-2010	9	Total Living Alumni by College	36
New Freshmen Enrollment by Residence 2004-2010.....	10	Alumni by State 2010	37
New Undergraduate Transfer Students by Type of Transfer College	11	Alumni by Iowa County 2010.....	38
New Freshmen ACT Composite Scores and High School Class Rank.....	12	Post-Graduation Status of 2009-2010 Bachelor's Degree Recipients	39
		Post-Graduation Status of 2009-2010 Graduate Degree Recipients.....	40
Enrollment		Undergraduate Plans for Further Education 2009-2010	41
Fall 2010 Students Profile by College.....	13	Graduate Plans for Further Education 2009-2010	42
Headcount Enrollment 2000-2010	14		
Headcount Enrollment by Level 1999-2010	15		
Undergraduate Enrollment by Age 2000-2010	16		
Undergraduate Headcount by College: Fall 2005-2010.....	17		
Fall 2010 Enrollment by Admission County	18		
Fall 2010 Enrollment by Residence	19		
Enrollment by Residence 2000-2010.....	20		
Enrollment by Level 2000-2010	21		
Fall 2010 Enrollment by Race/Ethnicity	22		
Enrollment by Race/Ethnicity 2000-2010	23		
Minority Student Enrollment 2000-2010.....	24		
Fall On-Campus Headcount and FTE Enrollment by Level 2000-2010	25		

Table of Contents (continued)

Faculty and Staff

Fall 2010 Faculty Profile by College	43
Faculty by College 2005-2010	44
Faculty by College and Gender 2005-2010	45
Faculty by Tenure Status 2000-2010	46
Faculty Tenure Status by Gender 2000-2010	47
Fall 2010 Faculty by Tenure Status and Minority	48
Faculty Tenure Status by Rank 2000-2010	49
Faculty by College and Tenure Status 2005-2010	50
Faculty by College, Gender and Tenure Status 2006-2010	51
Faculty by College and Rank 2005-2010	53
Faculty by College, Gender and Rank 2006-2010	54
Minority Faculty by Race/Ethnicity 2001-2010	56
UNI Workforce by Employment Categories 2000-2010	57
UNI Workforce by Race/Ethnicity 2003-2010	58
UNI Workforce by Employment Categories and Race/Ethnicity Fall 2010	59
UNI Workforce by Employment Categories and College 2009-2010	60
UNI Workforce by Employment Categories, Gender and College Fall 2010	61
UNI Workforce by Employment Categories, Level and College Fall 2010	62
UNI Workforce by Employment Categories, Level and Gender Fall 2010	63

Budget and Finance

Statement of Revenues, Expenses, and Changes in Net Assets 2003-2010	65
Financial Aid Programs by Source of Aid 2005-2010	67
Student Financial Aid Programs 2009-2010	68
Full-Time Undergraduate Student Tuition and Fees 1993-2010	69
Full-Time Graduate Student Tuition and Fees 1993-2010	70
Sponsored Project Proposals and Awards and Awards 2000-2010	71

Academic Departments

Fall Semester Total Student Credit Hours by Department 2006-2010	73
Fall Semester Student Credit Hours by College and Course Level	75

Faculty by Department and Gender 2009-2010	76
Faculty by Department and Rank 2007-2010	78
Faculty by Department and Tenure Status 2007-2010	80

Colleges

Business Administration 2006-2010	83
Education 2006-2010	85
Humanities and Fine Arts 2006-2010	87
Natural Sciences 2006-2010	89
Social and Behavioral Sciences 2006-2010	91

Graduate College

New Graduate Students by College: As Indicated on Application 2005-2010	93
New Students Enrolled by College and Residence 2001-2010	94
Fall 2010 Enrolled New Graduate Students by Admission County	95
Graduate Headcount by College 2001-2010	96
Graduate Source of Enrollment 2000-2010	97
Graduate Enrollment by Age 2000-2010	98
Average Debt upon Graduation 2002-2010	99

Library

Library Statistics: 2001-2010	101
-------------------------------------	-----



Table of Contents (continued)

General Information

International Students by Country: Fall 2010	103
International Students by College 2000-2010	104
Top 5 Countries of Origin for International Students 2000-2010	105
Study Abroad Host Country or Destination: Fall 09/Spring 10/Summer 10	106
UNI Services to Businesses, Communities and Local Government	107
UNI Carnegie Classification	108
Physical Facilities Inventory	109
Major Capital Projects since Year 2000	113
Iowa Economic Impact Profile	114

Peer Institutions

New Freshmen and Transfer Admission 2009-2010	115
Undergraduate Enrollment and Costs 2009-2010	116
Graduate Enrollment and Costs: 2009-2010	117
Faculty by Rank 2009-2010	118
Faculty Average Salaries by Rank 2009-2010	119
Undergraduates Receiving Student Financial Aid: 2008-2009	120
Retention and Graduation Rates Fall 2010	121
Degrees Granted in Academic Year 2009-2010	122

References

Quick References	123
Campus Map	124



University of Northern Iowa

FACT BOOK: 2010-2011

Office of Institutional Research

Student Contributors:

Nangai Yang

Corey Pottebaum

Graphic and Publication Support:

Office of University Relations

Phone: 319-273-3050

Fax: 319-273-3010

E-mail: instrsch@uni.edu





Mission Statement

Institutional Mission

The University of Northern Iowa provides transformative learning experiences that inspire students to embrace challenge, engage in critical inquiry and creative thought and contribute to society.

Vision Statement

The University of Northern Iowa will be nationally known for innovative education, preparing students for success in a rapidly changing, globally competitive, and culturally diverse world.

Values

As a university community we are guided by the following core values:

Academic Freedom – freedom of inquiry by students, faculty, and staff

Access– an affordable, inclusive educational environment

Values (Continued)

Accountability – integrity, responsibility and the highest ethical standards of students, faculty and staff

Community– an ethical, caring, and safe community characterized by civility

Diversity – a welcoming community that celebrates pluralism, multiculturalism, and the unique contributions of each person and group

Engagement – characterized by challenge, transformation, and lifelong learning in a global society

Excellence – in teaching and learning, scholarship and creative work, and service

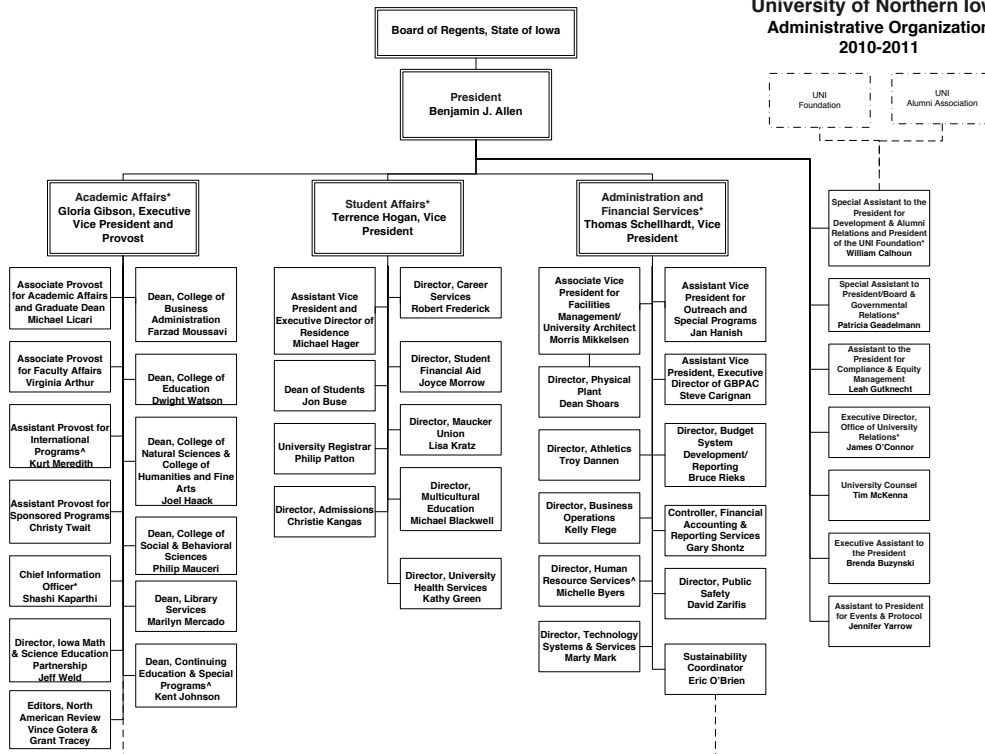
Sustainability – an attractive, well-maintained campus environment that enhances the living and learning experience with an emphasis on environmental stewardship



University of Northern Iowa
Administrative Organization
2010-2011



2



October 25, 2010

*President's Cabinet

^Interim

UNI Administration

PRESIDENT..... Dr. Benjamin J. Allen

EXECUTIVE VICE PRESIDENT and PROVOST..... Dr. Gloria Gibson

VICE PRESIDENTS

Vice President for Student Affairs..... Dr. Terrence Hogan

Vice President for Administration and Financial Services..... Mr. Thomas Schellhardt

SPECIAL ASSISTANTS to PRESIDENT

Special Assistant Board & Govment Relations..... Dr. Patricia L. Geadelmann

Development & Alumni Relations & President of the UNI Foundations..... Mr. William Calhoun

CHIEF INFORMATION OFFICER..... Dr. Shashi Kaparathi

DIRECTOR OF UNIVERSITY RELATIONS..... James E O'Connor

ASSOCIATE and ASSISTANT PROVOSTS

Associate Provost for Academic Affairs..... Dr. Michael Licari

Associate Provost for Faculty Affairs..... Dr. Virginia Arthur

Assistant Provost for Sponsored Programs..... Ms. Christine Twait

Assistant Provost for International Programs..... Dr. Kurt Meredith (Interim)

DEANS

College of Business Administration..... Dr. Farzad Moussavi

College of Education..... Dr. Dwright Watson

College of Humanities and Fine Arts..... Dr. Joel Haack

College of Natural Sciences..... Dr. Joel Haack

College of Social and Behavioral Sciences..... Dr. Philip Mauceri

Continuing Education and Special Programs..... Dr. Kent Johnson (Interim)

Graduate College..... Dr. Michael Licari

Library..... Ms. Marilyn Mercado



Definitions of Terms Used

ENROLLMENTS

Headcount: The count of each student enrolled for one or more courses taken in a semester following the second week of the semester's start.

Full-Time Student: An undergraduate student enrolled for 12 or more credit hours per semester and a graduate student enrolled for 9 or more credit hours per semester.

FTE (Full-Time Equivalent): An enrollment unit used to represent a student enrolled for a full course of study. It is calculated by dividing total credit hours generated by 15.0 for undergraduate students and by 9 for graduate students for a semester FTE.

Unclassified/Undeclared Student: A student who has enrolled in instructional courses but has not been officially accepted into one of the institution's authorized degree programs.

Freshman: A first-year undergraduate student.

First-Time First-Year Student: A student attending any institution for the first-time at the undergraduate level. Includes students enrolled in the fall term who attended college for the first time in the prior summer term. Also includes students who entered with advanced standing (college credits earned before graduate from high school).

First-Time Student: A student attending any institution for the first time at the level enrolled. Includes students enrolled in the fall term who attended a postsecondary institution for the first time at the same level in the prior summer term. Also includes students who entered with advanced standing (college credit earned before graduation from high school).

Graduation Rate: Rate required for disclosure and/or reporting purposes under Student Right-to-Know. Calculated as the total number of completers within 150 percent of normal time divided by the revised cohort minus any allowable exclusions.

FACULTY AND STAFF

Faculty (Instruction/Research/Public Service): Persons whose specific assignments customarily are made for the purpose of conducting instruction, research, or public service as a principle activity (or activities), and who hold academic rank titles of professor, associate professor, assistant professor, instructor, lecturer or the equivalent of any of these academic ranks. This category excludes president, vice presidents, and deans. Also excluded are faculty on leave without pay.

Executive, Administrative and Managerial: Persons whose assignments require primary (and major) responsibility for management of the institution, or a customarily recognized department or subdivision, thereof. Assignments require the performance of work directly related to management policies or general business operations of the institution, department or subdivision. It is assumed that assignments in this category customarily and regularly require the incumbent to exercise discretion and independent judgment, and to direct the work of others. Included in this category are all officers holding titles such as president, vice president, dean, director or the equivalent, as well as officers subordinated to any of these administrators with such titles as associate dean, assistant dean, executive officer of academic departments (department heads, or the equivalent) if their principal activity is administrative.

Definitions of Terms Used

BUDGET AND FINANCE

Current Funds Expenditures (and Transfers): The costs incurred for goods and services used in the conduct of the institution's operations. Includes the acquisition cost of capital assets, such as equipment and library books, to the extent current funds are budgeted for and used by operating departments for such purposes.

Current Funds Revenues: Unrestricted gifts, grants and other resources earned during the reporting period and restricted resources to the extent that such funds were expended for current operating purposes. Excludes restricted current funds received, but not expended because these revenues have not been earned.

Academic Support (Expenditures) for Public Institutions:

Expenditures for the support services that are an integral part of the public institution's primary mission of instruction, research or public service. Includes expenditures for libraries, museums, galleries, audiovisual services, academic computing support, ancillary support, academic administration, personnel development and course and curriculum development. Academic support expenditures for public institutions are measured differently than academic support expenses for private institutions because private institutions' academic support expenses include depreciation costs and interest costs in amounts associated with this function. In addition, private institutions exclude amounts of capital expenditures associated with the academic support function. Finally, operations and maintenance expenses associated with the academic support function are included in the amounts reported by private institutions but are reported separately by public institutions.

Auxiliary Enterprises (Expenditures) for public Institutions:

Expenditures for essentially self-supporting operations of the institution that exist to furnish a service to students, faculty or staff, and that charge a fee that is directly related to, although not necessarily equal to, the cost of the service. Includes mandatory and nonmandatory transfers. Examples are residence halls, food services, student health services, athletics, UNI-Dome and performing arts center. Auxiliary enterprise expenditures are measured differently for public and private institutions. Public institutions include capital expenditure amounts associated with auxiliary enterprise expenditures, but do not include depreciation, interest and operations and maintenance expenses. These amounts are included in private institutions' expenses of auxiliary enterprises.

OTHER

IPEDS: The Integrated Postsecondary Education Data System conducted by National Center for Education Statistics (NCES). IPEDS began in 1986 and involves annual data collections. Survey data are required from all postsecondary institutions that have a Program Participation Agreement (PPA) with the Office of Postsecondary Education, U.S. Department of Education. IPEDS also requests limited data from approximately 3,000 other schools offering postsecondary education programs.

NCA: North Central Association of Colleges and Schools



CALENDAR



6

Semester/Date

Fall 2010

Monday, August 23
 Monday, September 6
 Friday, October 15
 Monday, October 18
 Monday - Friday, November 22 - 26
 Thursday - Friday, November 25- 26
 Monday - Friday, December 13 - 17
 Saturday, December 18
 Friday & Monday, December 24 & 27

Spring 2011

Friday, December 31
 Monday, January 10
 Monday, January 17
 Friday, February 25
 Monday, February 28
 Monday - Friday, March 14 - 18
 Monday - Friday, May 2 - 6
 Saturday, May 7

Summer 2011

Monday, May 9
 Monday, May 9
 Monday, May 30
 Friday, June 3
 Monday, June 6
 Monday, June 6
 Friday, June 17
 Monday, June 20
 Friday, July 1
 Monday, July 4
 Tuesday, July 5
 Friday, July 29

Event

Semester begins
 University holiday
 First half ends
 Second half begins
 Thanksgiving break
 University holiday
 Final exam week
 Commencement
 University holiday

University holiday
 Semester begins
 University holiday
 First half ends
 Second half begins
 Spring break
 Final exam week
 Commencement

May session begins
 First 6 wk session begins
 University holiday
 First 4 wk session ends
 Second 4 wk session begins
 8 wk session begins
 First 6 wk session ends
 Second 6 wk session begins
 Second 4 wk session ends
 University holiday
 Third 4 wk session begins
 All session end

Semester/Date

Fall 2011

Monday, August 22
 Monday September 5
 Friday October 14
 Monday October 17
 Monday-Friday November 21-25
 Thursday - Friday, November 24-25
 Monday - Friday, December 12 - 16
 Saturday, December 17
 Friday & Monday, December 23 & 26

Spring 2012

Monday, January 2
 Monday, January 9
 Monday, January 16
 Friday, February 24
 Monday, February 27
 Monday - Friday, March 12 - 16
 Monday - Friday, April 30 - May 4
 Saturday, May 5

Summer 2012

Monday, May 7
 Monday, May 7
 Monday, May 28
 Friday, June 1
 Monday, June 4
 Monday, June 4
 Friday, June 15
 Monday, June 18
 Friday, June 29
 Wednesday, July 4
 Tuesday, July 3
 Friday, July 27



New Students

New Students

New Students



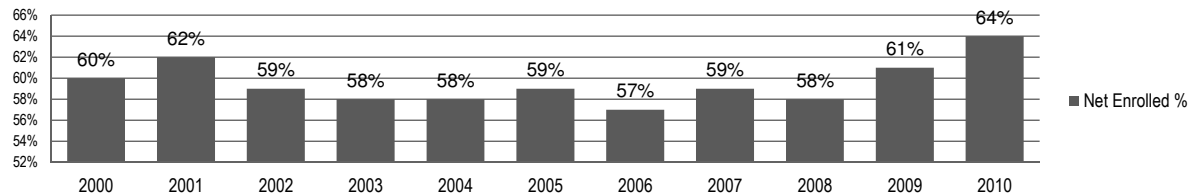
New Students

Fall 2010 New Students*

7

	Applications		Admissions		**Net Enrolled		NET ENROLLED					
							Resident		Non-Resident		International	
	N	%	N	%	N	%	N	%	N	%	N	%
TOTAL	7,131		5,421		3,529		3,200		205		124	
Percent				76.0		49.5		90.7		5.8		3.5
Undergraduate												
New Freshmen	4,092	68.0	3,370	69.1	1,978	63.5	1,833	63.4	107	71.3	38	51.4
Transfers	1,926	32.0	1,508	30.9	1,138	36.5	1,059	36.6	43	28.7	36	48.6
Total	6,018		4,878		3,116		2,892		150		74	
Percent				81.1		63.9		92.8		4.8		2.4
Graduate												
Students	1,113		543		413		308		55		50	
Percent				48.8		76.1		74.6		13.3		12.1

Net Enrolled % of Admitted



Source: Office of Admissions & Office of the Registrar

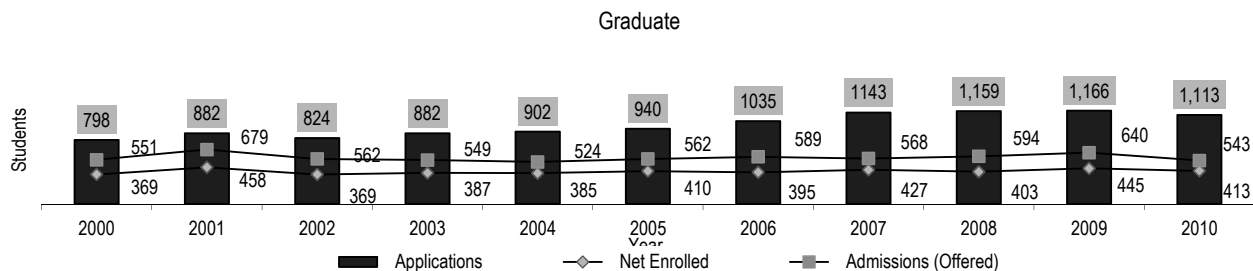
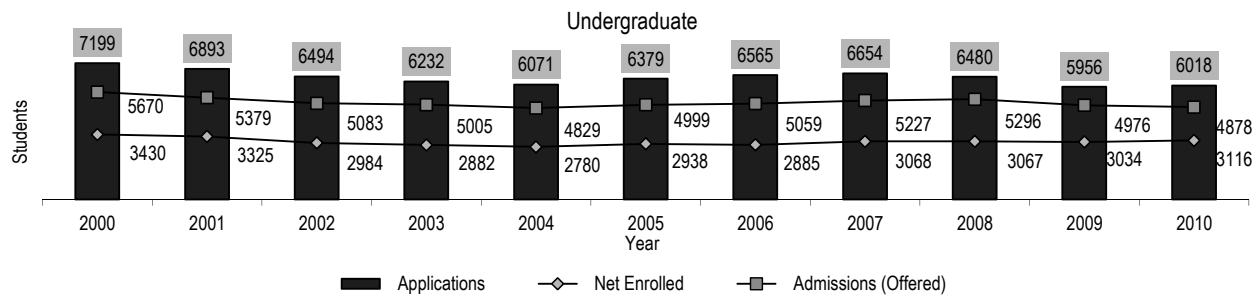
*The Undergraduate data does not reflect unclassified new students.



New Student Applications, Admissions and Enrolled Fall Semester 2000-2010



8



Source: Office of Enrollment Services & Office of the Registrar

New Students Enrolled By Residence 2000-2010

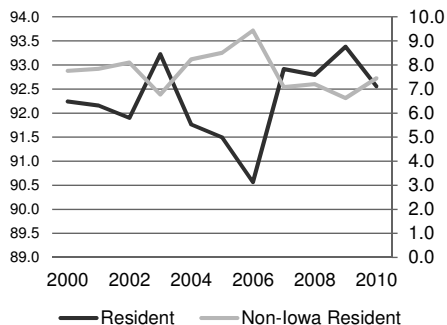
UNDERGRADUATE*

	Resident	Non-Resident	International Student
2000	3,294	173	104
2001	3,185	193	78
2002	2,848	164	87
2003	2,780	105	97
2004	2,640	151	86
2005	2,766	149	108
2006	2,688	152	128
2007	2,937	191	33
2008	2,846	178	43
2009	2,834	146	55
2010	2,884	158	74

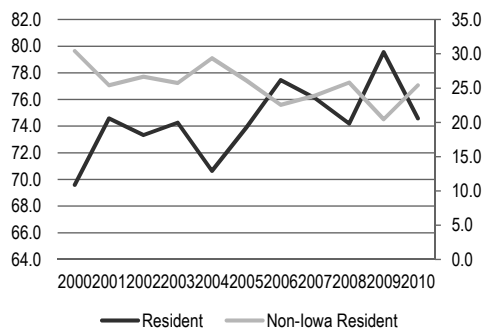
GRADUATE

	Resident	Non-Resident	International Student	Total	Annual Percent Change
2000	254	45	66	3,936	4.8
2001	317	34	74	3,881	-1.4
2002	264	43	53	3,459	-10.9
2003	277	42	54	3,355	-3.0
2004	272	57	56	3,262	-2.8
2005	303	43	64	3,433	5.2
2006	299	44	43	3,354	-2.3
2007	325	33	69	3,588	7.0
2008	299	51	53	3,470	-3.3
2009	354	50	41	3,480	0.3
2010	308	55	50	3,529	1.4

Undergraduate New Student %



Graduate New Student %



Source: Office of the Registrar

*New undergraduate students are only new freshmen and new transfers.

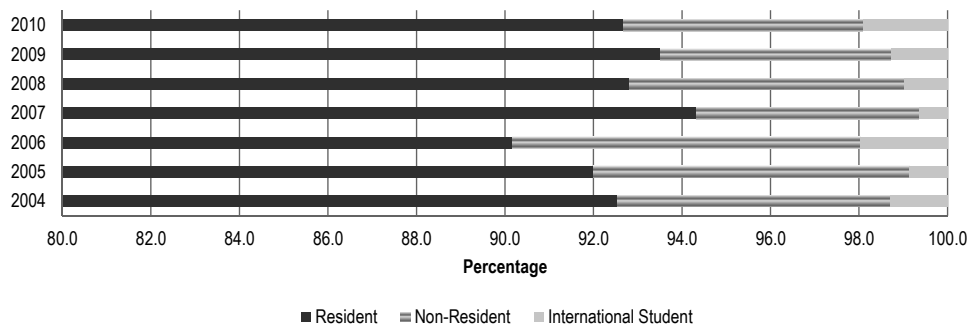
New Freshmen Enrollment by Residence 2004-2010



10

	2004		2005		2006		2007		2008		2009		2010	
	N	%	N	%	N	%	N	%	N	%	N	%	N	%
New Freshmen	1,700		1,737		1,768		1,991		2,015		1,946		1,978	
Annual Percent Change		-4.8		2.2		1.8		12.6		1.2		-3.4		1.6
Resident	1,573	92.5	1,598	92.0	1,594	90.2	1,878	94.3	1,870	92.8	1,820	93.5	1,833	92.7
Non-Resident	105	6.2	124	7.1	139	7.9	100	5.0	125	6.2	101	5.2	107	5.4
International Student	22	1.3	15	0.9	35	2.0	13	0.7	20	1.0	25	1.3	38	1.9

New Freshmen Enrollment by Residence

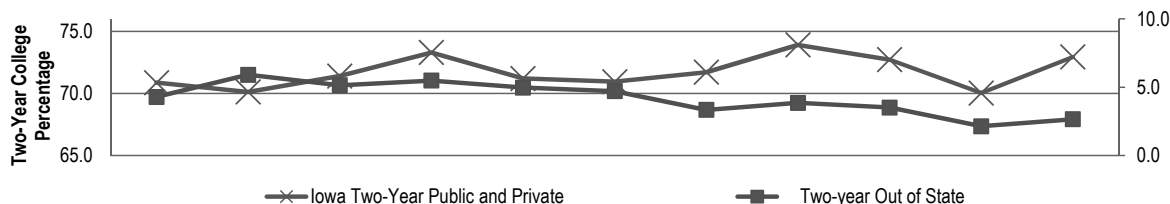


Source: Office of the Registrar

New Undergraduate Transfer Students by Type of Transfer College

	2000	2001	2002	2003	2004	2005	2006	2007	2008	2009	2010
TOTAL	1,167	1,235	1,119	1,097	1,080	1,201	1,117	1,077	1,052	1,088	1,138
Annual Percent Change	4.8	5.8	-9.4	-2.0	-1.5	11.2	-7.0	-3.6	-2.3	3.4	4.6
Iowa Two-Year Public and Private	827	866	799	804	769	852	801	796	765	762	830
Iowa Area Community Colleges	805	852	773	786	757	835	798	789	757	762	828
Iowa Two-Year Private	22	14	26	18	12	17	3	7	8	0	2
Iowa Four-Year Public and Private	203	184	170	162	167	203	197	165	171	186	183
Iowa Four-Year Public											
Iowa State University	37	42	22	43	45	35	26	30	23	32	32
University of Iowa	49	39	49	40	35	41	57	48	46	42	51
Subtotal	86	81	71	83	80	76	83	78	69	74	83
Iowa Four-Year Private	117	103	99	79	87	127	114	87	102	112	100
Non-Iowa (US) Total	137	185	150	131	144	146	119	116	116	140	125
Two-year Out of State	50	69	60	64	58	55	39	45	41	25	31
Four-year Out of State	87	116	90	67	86	91	80	71	75	115	94

Two-Year New Undergraduate Transfer Students



Source: Office of Admissions



New Freshmen ACT Composite Scores and High School Class Rank

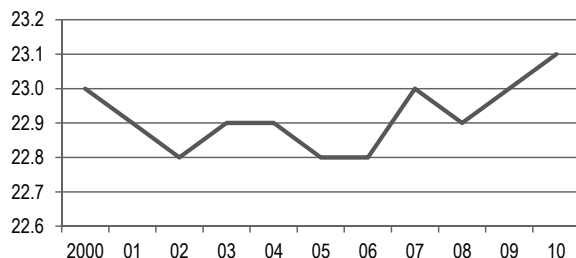


12

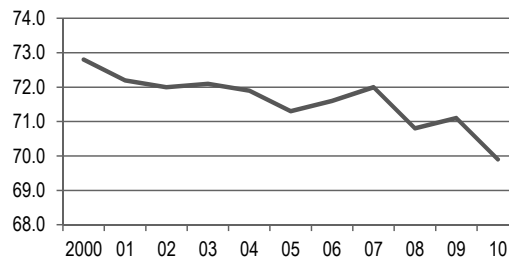
	ACT Composite Scores			High School Rank			
	Mean	75 th Percentile	25 th Percentile	Mean	Percent in Upper 10%	Percent in Upper 20%	Percent in Upper 50%
2000	23.0	25.8	20.0	72.8	18.7	40.6	91.4
2001	22.9	24.8	20.8	72.2	18.1	38.6	90.5
2002	22.8	25.0	20.0	72.0	17.7	37.5	89.9
2003	22.9	25.0	20.0	72.1	19.1	38.6	89.4
2004	22.9	25.1	20.0	71.9	19.1	38.5	89.7
2005	22.8	25.1	20.0	71.3	19.0	39.1	89.5
2006	22.8	25.8	21.0	71.6	18.2	37.6	88.7
2007	23.0	25.7	20.9	72.0	19.0	38.9	88.5
2008	22.9	25.7	20.9	70.8	18.6	37.6	85.3
2009	23.0	25.9	21.1	71.1	18.9	40.1	85.3
2010	23.1	25.0	21.1	69.9	17.6	36.2	84.0

Source: Office of Admissions

ACT Mean Composite Score



High School Mean Rank





Enrollment

Enrollment

Enrollment



Enrollment

Fall 2010 Students Profile by College

	Total University	Business	Education	H&F Arts	Natural Sciences	S&B Sciences	No Specific College
TOTAL	13,201	2,389	2,945	2,196	1,983	2,145	1,543
Percent		18.1	22.3	16.6	15.0	16.2	11.7
Full-Time	11,148	2,173	2,405	1,993	1,734	1,899	944
Part-Time	2,053	216	540	203	249	246	599
Female	7,727	937	2,161	1,497	760	1,302	1070
Male	5,474	1,452	784	699	1,223	843	473
Freshman	2,340	450	403	359	346	287	495
Sophomore	2,181	434	446	392	373	355	181
Junior	3,037	687	652	499	516	606	77
Senior	3,574	753	880	643	570	615	113
Unclassified	259	0	0	0	0	0	259
Graduate	1,810	65	564	303	178	282	418
International Students:	480	154	29	45	113	26	113
Undergraduate	333	132	5	14	76	14	92
Graduate	147	22	24	31	37	12	21
1st Majors:	13,201	2,389	2,945	2,196	1,983	2,145	1,543
Undergraduate	11,391	2,324	2,381	1,893	1,805	1,863	1,125
Graduate	1,810	65	564	303	178	282	418
2009-2010 Degrees Granted:	2,934	603	739	538	406	551	97
Baccalaureate (Bachelor's)	2,347	534	488	429	345	459	92
Master's	561	69	227	109	59	92	5
Specialists	6	-	6	-	-	-	-
Doctorates	20	-	18	-	2	-	-



Headcount Enrollment 2000-1010

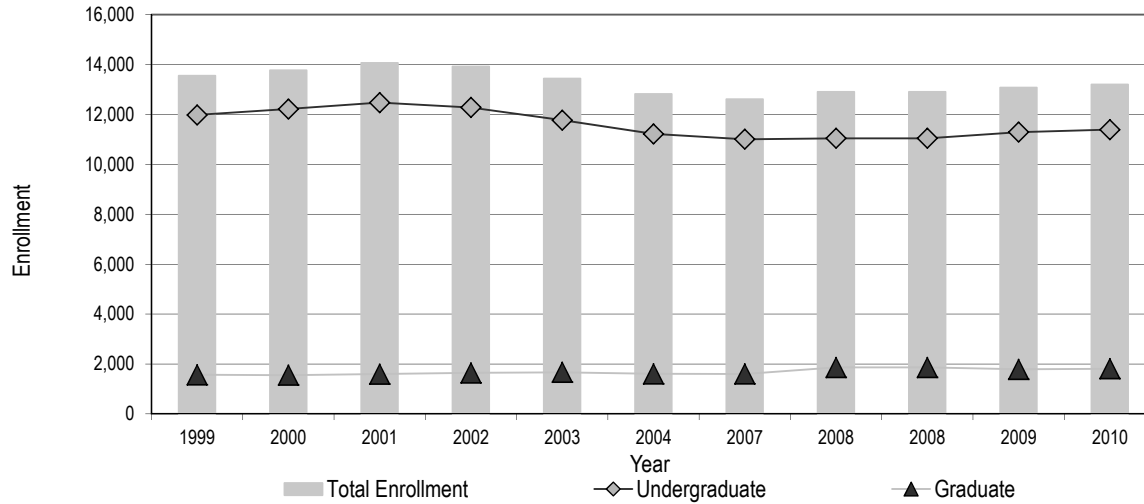


14

	UNDERGRADUATE		GRADUATE		Total	Annual
	Full-Time	Part-Time	Full-Time	Part-Time		Percent
						Change
2000	10,974	1,244	550	1,006	13,774	1.6
2001	11,209	1,265	577	1,019	14,070	2.1
2002	10,939	1,343	550	1,094	13,926	-1.0
2003	10,510	1,264	566	1,101	13,441	-3.5
2004	9,987	1,233	678	926	12,824	-4.6
2005	9,782	1,170	681	880	12,513	-2.4
2006	9,606	1,096	690	868	12,260	-2.0
2007	9,888	1,122	692	907	12,609	2.8
2008	10,028	1,019	731	1,130	12,908	2.4
2009	10,279	1,015	781	1,005	13,080	1.3
2010	10,378	1,013	770	1,040	13,201	0.9

Source: Office of the Registrar

Headcount Enrollment by Level 1999-2010*



Source: Office of the Registrar

*Includes Full-Time and Part-Time Students

Undergraduate Enrollment by Age 2000-2010

Fall Semester	2000	2001	2002	2003	2004	2005	2006	2007	2008	2009	2010
Total Enrollment	12,218	12,474	12,282	11,774	11,220	10,952	10,702	11,010	11,047	11,294	11,391
Under 18	146	423	110	52	106	108	106	113	91	94	102
18	1,930	2,028	1,553	1,004	1,435	1,463	1,526	1,729	1,758	1,708	1,733
19	2,030	2,257	1,979	1,734	1,712	1,669	1,699	1,756	1,950	1,915	1,909
20	2,352	2,407	2,472	2,053	1,964	2,062	1,974	1,986	2,013	2,254	2,201
21	2,308	2,293	2,453	2,461	2,338	2,067	2,120	2,114	2,045	2,054	2,300
22	1,496	1,361	1,682	1,978	1,682	1,584	1,353	1,417	1,383	1,330	1,322
23	605	474	615	980	665	677	686	596	579	577	527
24	267	226	291	361	290	289	312	312	258	292	264
25	174	174	177	192	184	194	165	191	184	174	197
26	113	109	130	145	118	121	120	129	126	139	137
27	87	84	80	104	100	92	77	90	88	98	91
28	77	60	80	79	77	78	73	69	74	91	69
29	61	53	52	60	51	58	58	66	57	69	71
30-39	317	293	355	341	290	294	263	268	256	310	301
40-49	198	176	178	159	148	138	116	120	120	127	104
50-64	55	55	73	68	59	55	51	49	61	60	61
65 and older	2	1	2	3	1	3	3	5	4	2	2

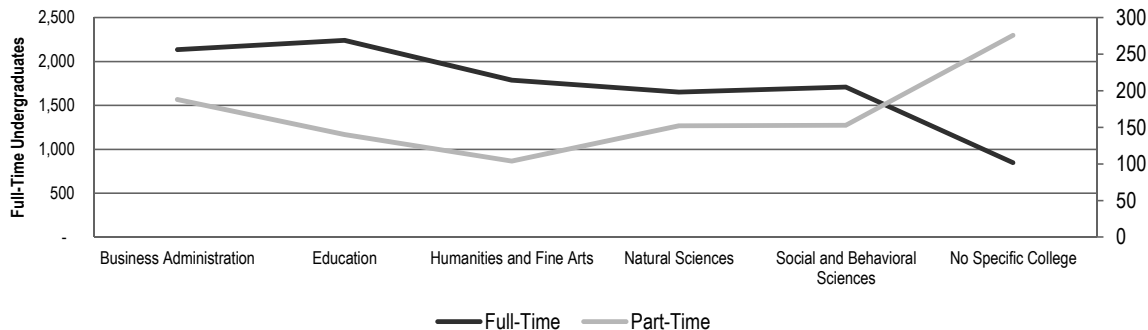
Source: Office of the Registrar

Undergraduate Headcount by College: Fall 2005 - 2010

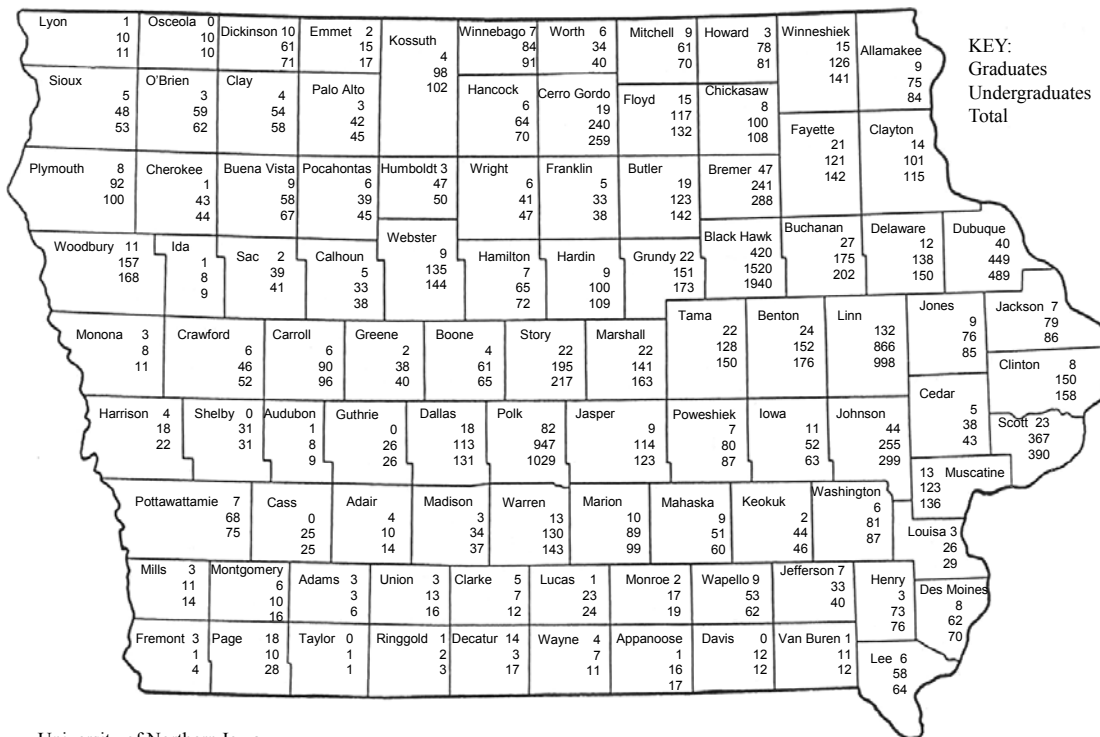
	Full-Time						Part-Time					
	2005	2006	2007	2008	2009	2010	2005	2006	2007	2008	2009	2010
Total University	9,782	9,606	9,888	10,028	10,279	10,378	1,170	1,096	1,122	1,019	1,015	1,013
Business Administration	2,205	2,141	2,178	2,265	2,152	2,136	235	192	181	181	198	188
Education	2,075	1,962	1,984	1,977	2,150	2,241	130	94	109	108	146	140
Humanities and Fine Arts	1,688	1,736	1,719	1,700	1,767	1,789	129	124	97	115	109	104
Natural Sciences	1,368	1,378	1,477	1,521	1,659	1,653	169	173	169	181	159	152
Social and Behavioral Sciences	1,668	1,661	1,643	1,613	1,684	1,710	147	132	122	137	119	153
No Specific College	778	728	887	952	867	849	360	381	444	297	284	276

Source: Office of the Registrar

Fall 2010 Undergraduates by College



FALL 2010 ENROLLMENT By Admission County



KEY:
Graduates
Undergraduates
Total

18

Fall 2010 Enrollment by Residence

	Iowa Resident		U.S. Non-Iowa Resident		International Student		TOTAL
	N	%	N	%	N	%	N
Enrollment	11,978	90.7	743	5.6	480	3.6	13,201
New Freshmen	1,833	92.7	107	5.4	38	1.9	1,978
Undergraduate	10,532	92.5	526	4.6	333	2.9	11,391
New Graduate	308	74.6	55	13.3	50	12.1	413
Graduate	1,446	79.9	217	12.0	147	8.1	1,810

Source: Office of the Registrar

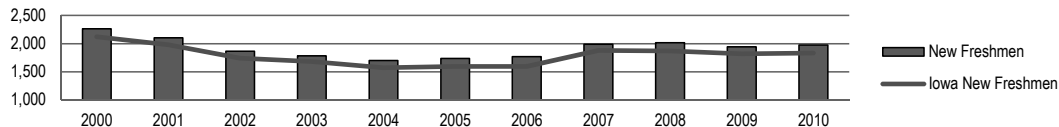
Enrollment by Residence 2000-2010



20

	2000	2001	2002	2003	2004	2005	2006	2007	2008	2009	2010	5 Yr % Change	10 Yr % Change
Fall Semester													
Enrollment	13,774	14,070	13,926	13,441	12,824	12,513	12,260	12,609	12,908	13,080	13,201	5.5	-4.2
Iowa Resident	12,790	13,010	12,781	12,356	11,793	11,400	11,129	11,444	11,562	11,896	11,978	5.1	-6.3
U.S., Non-Iowa Resident	645	705	779	701	680	691	699	693	882	731	743	7.5	15.2
International Student	339	355	366	384	351	422	432	472	464	453	480	13.7	41.6
New Freshmen	2,263	2,104	1,865	1,785	1,700	1,737	1,768	1,991	2,015	1,946	1,978	13.9	-12.6
Iowa Resident	2,123	1,979	1,743	1,683	1,573	1,598	1,594	1,878	1,870	1,820	1,833	14.7	-13.7
U.S., Non-Iowa Resident	117	112	110	88	105	124	139	100	125	101	107	-13.7	-8.5
International Student	23	13	12	14	22	15	35	13	20	25	38	153.3	65.2
Undergraduate	12,218	12,474	12,282	11,774	11,220	10,952	10,702	11,010	11,047	11,294	11,391	4.0	-6.8
Iowa Resident	11,536	11,754	11,504	11,061	10,516	10,185	9,907	10,157	10,185	10,469	10,532	3.4	-8.7
U.S., Non-Iowa Resident	498	529	571	507	516	537	542	555	598	541	526	-2.0	5.6
International Student	184	191	207	206	188	230	253	298	264	284	333	44.8	81.0
Graduate	1,556	1,596	1,644	1,667	1,604	1,561	1,558	1,599	1,861	1,786	1,810	16.0	16.3
Iowa resident	1,254	1,256	1,277	1,295	1,277	1,215	1,222	1,287	1,377	1,427	1,446	19.0	15.3
U.S., Non-Iowa Resident	147	176	208	194	164	154	157	138	284	190	217	40.9	47.6
International Student	155	164	159	178	163	192	179	174	200	169	147	-23.4	-5.2

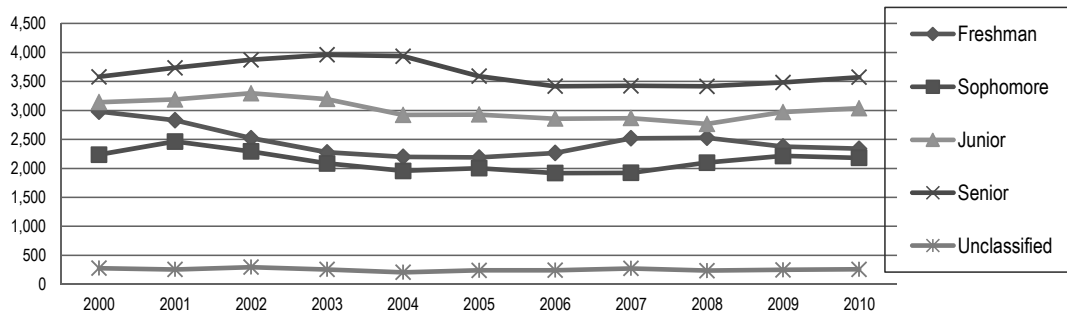
New Freshmen



Enrollment by Level 2000-2010

	Freshman	Sophomore	Junior	Senior	Unclassified	Undergraduate	Graduate
2000	2,979	2,238	3,143	3,580	278	12,218	1,556
2001	2,830	2,464	3,188	3,735	257	12,474	1,596
2002	2,522	2,293	3,296	3,874	297	12,282	1,644
2003	2,278	2,085	3,195	3,960	256	11,774	1,667
2004	2,199	1,957	2,921	3,936	207	11,220	1,604
2005	2,189	2,004	2,928	3,591	240	10,952	1,561
2006	2,266	1,919	2,857	3,418	242	10,702	1,558
2007	2,520	1,924	2,866	3,425	275	11,010	1,599
2008	2,528	2,100	2,766	3,416	237	11,047	1,861
2009	2,378	2,214	2,971	3,482	249	11,294	1,786
2010	2,340	2,181	3,037	3,574	259	11,391	1,810

Undergraduate Level



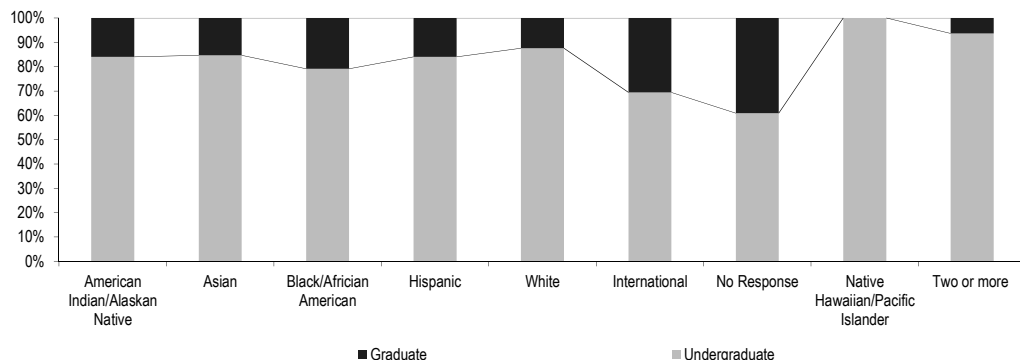
Source: Office of the Registrar

Fall 2010 Enrollment by Race/Ethnicity



22

	American Indian/ Alaskan Native		Asian		Black/ African American		Hispanic		White		International		No Response		Native Hawaiian/ Pacific Islander		Two or more	
	N	%	N	%	N	%	N	%	N	%	N	%	N	%	N	%	N	%
Enrollment	25	100	124	100	383	100	276	100	11,638	100	480	100	161	100	4	100	110	100
Undergraduate	21	84.0	105	84.7	303	79.1	232	84.1	10,192	87.6	333	69.4	98	60.9	4	100.0	103	93.6
Graduate	4	16.0	19	15.3	80	20.9	44	15.9	1,446	12.4	147	30.6	63	39.1	0	0.0	7	6.4
Percentage		0.2		0.9		2.9		2.1		88.2		3.6		1.2		0.0		0.8



Ug=11,391
G=1,810

Enrollment by Race/Ethnicity 2000-2010

	American Indian/ Alaskan Native	Asian/ Pacific Islander	Black/ African American	Hispanic/ Latino	Native Hawaiian/ Pacific Islander	White	Two or more	International	No Response
UNDERGRADUATE									
2000	31	124	283	119	-	11,089	-	184	388
2001	27	127	296	161	-	11,268	-	191	404
2002	25	109	319	195	-	11,023	-	207	404
2003	28	130	323	187	-	10,498	-	206	402
2004	30	114	324	200	-	9,978	-	188	386
2005	23	116	317	164	-	9,740	-	230	362
2006	28	131	288	181	-	9,463	-	253	358
2007	34	133	287	177	-	9,679	-	298	402
2008	28	121	300	199	-	9,758	-	264	377
2009	20	117	305	243	5	10,152	77	284	91
2010	21	105	303	232	4	10,192	77	333	98
GRADUATE									
2000	4	16	73	16	-	1,210	-	155	82
2001	3	15	74	19	-	1,242	-	164	79
2002	6	19	78	12	-	1,309	-	159	61
2003	4	11	103	21	-	1,282	-	178	68
2004	4	11	101	25	-	1,223	-	163	77
2005	3	13	98	22	-	1,154	-	192	79
2006	3	16	89	24	-	1,172	-	179	75
2007	2	18	70	24	-	1,224	-	174	87
2008	6	26	92	38	-	1,390	-	200	109
2009	3	19	72	39	0	1,416	4	169	64
2010	4	19	80	44	0	1,446	7	147	63

Source: Office of the Registrar

*Includes all international students; other categories include American citizens, immigrants, asylees, and

NOTE: The Race/Ethnicity reporting was changed in Fall 2009 semester to implement the new U.S. Department of Education guidelines.



Minority Student Enrollment 2000-2010



24

	UNDERGRADUATE						GRADUATE					
	American Indian/ Alaskan Native	Asian/ Pacific Islander	Black/ African American	Hispanic/ Latino	Native Hawaiian/ Pacific Islander	Two or more	American Indian/ Alaskan Native	Asian/ Pacific Islander	Black/ African American	Hispanic/ Latino	Native Hawaiian/ Pacific Islander	Two or more
2000	31	124	283	119			4	16	73	16		
2001	27	127	296	161			3	15	74	19		
2002	25	109	319	195			6	19	78	12		
2003	28	130	323	187			4	11	103	21		
2004	30	114	324	200			4	11	101	25		
2005	23	116	317	164			3	13	98	22		
2006	28	131	288	181			3	16	89	24		
2007	34	133	287	177			2	18	70	24		
2008	28	121	300	199			6	26	92	38		
2009	20	117	305	243	5	77	3	19	72	39	0	4
2010	21	105	303	232	4	103	4	19	80	44	0	7

Source: Office of the Registrar

Fall On-Campus Headcount and Full-Time Equivalent (FTE) Enrollment by Level 2000-2010

	Headcount							FTE Enrollment						
	Undergraduate					Graduate		Undergraduate					Graduate	
	F	S	Jr	Sr	Unclassified	Master's	Advanced	F	S	Jr	Sr	Unclassified	Master's	Advanced
2000	2,979	2,238	3,143	3,580	278	1,144	412	2,762	2,051	2,787	3,096	91	845	236
2001	2,830	2,464	3,188	3,735	257	1,174	422	2,561	2,246	2,827	3,226	81	888	252
2002	2,522	2,293	3,296	3,874	297	1,163	481	2,319	2,098	2,928	3,328	88	839	279
2003	2,278	2,085	3,195	3,960	256	1,173	494	2,063	1,890	2,848	3,403	79	862	279
2004	2,199	1,957	2,921	3,936	207	1,100	504	1,997	1,764	2,589	3,377	68	893	318
2005	2,189	2,004	2,928	3,591	240	1,112	449	2,045	1,869	2,665	3,133	89	933	282
2006	2,266	1,919	2,857	3,418	242	1,113	445	2,090	1,814	2,631	3,001	87	945	267
2007	2,520	1,924	2,866	3,425	275	1,157	442	2,299	1,808	2,646	3,003	100	998	253
2008	2,528	2,100	2,766	3,416	237	1,369	492	2,343	2,003	2,563	3,010	94	1,080	272
2009	2,377	2,214	2,971	3,482	250	1,300	486	2,172	2,109	2,772	3,057	93	1,098	270
2010	2,340	2,181	3,037	3,574	259	1,289	521	2,139	2,068	2,827	3,159	108	1,076	304

Source: Office of the Registrar

First Major Only by College and Level: Fall 2004 - 2010

	Undergraduate							Graduate						
	2004	2005	2006	2007	2008	2009	2010	2004	2005	2006	2007	2008	2009	2010
Total University	11,220	10,952	10,702	11,010	11,047	11,294	11,391	1,604	1,561	1,558	1,599	1,861	1,786	1,810
Business Administration	2,505	2,440	2,333	2,359	2,446	2,350	2,324	86	91	96	84	110	85	65
Education	2,245	2,205	2,056	2,093	2,085	2,296	2,381	715	658	666	695	670	667	564
Humanities and Fine Arts	1,819	1,817	1,860	1,816	1,815	1,876	1,893	280	261	252	244	253	274	303
Natural Sciences	1,584	1,537	1,551	1,646	1,702	1,818	1,805	129	115	107	149	164	191	178
Social and Behavioral Sciences	1,880	1,815	1,793	1,765	1,750	1,803	1,863	154	169	157	171	183	192	282
No Specific College	1,187	1,138	1,109	1,331	1,249	1,151	1,125	240	267	280	256	481	377	418

Source: Office of the Registrar

Annual Degrees Awarded by Level 2000-2010

	1999 - 2000	2000 - 2001	2001 - 2002	2002 - 2003	2003 - 2004	2004 - 2005	2005 - 2006	2006 - 2007	2007 - 2008	2008 - 2009	2009 - 2010	5 Yr % Change	10 Yr % Change
Total Degrees Awarded	2,830	2,665	2,851	3,018	3,039	3,176	2,933	2,748	2,720	2,751	2,934	-7.6	3.7
Baccalaureate	2,386	2,266	2,420	2,592	2,584	2,669	2,423	2,259	2,221	2,268	2,347	-12.1	-1.6
Master's	426	383	415	405	434	494	485	471	474	467	561	13.6	31.7
Specialists	10	3	4	9	11	3	7	10	9	6	6	100.0	-40.0
Doctorates	8	13	12	12	10	10	18	8	16	10	20	100.0	150.0
Undergraduate Degrees Awarded	2,386	2,266	2,420	2,592	2,584	2,669	2,423	2,259	2,221	2,268	2,347	-12.1	-1.6
Bachelor of Arts	2,254	2,144	2,307	2,449	2,463	2,514	2,272	2,148	2,121	2,148	2,201	-12.5	-2.4
Bachelor of Fine Arts	8	5	8	7	8	9	15	8	8	3	8	-11.1	0.0
Bachelor of Music	28	20	22	24	23	22	19	19	14	22	27	22.7	-3.6
Bachelor of Science	77	76	71	84	74	90	93	64	64	76	84	-6.7	9.1
Bachelor of Technology*	4	2	0	1	0	0	0	0	0	0	0	-	-
Bachelor of Liberal Studies	15	19	12	27	16	34	24	20	14	19	27	-20.6	80.0
Graduate Degrees Awarded	444	399	431	426	455	507	510	489	499	483	587	15.8	32.2
Master of Accounting	0	0	2	7	23	13	19	11	23	36	29	123.1	NA
Master of Arts in Education	127	92	107	114	127	147	108	129	119	99	147	0.0	15.7
Master of Arts	244	211	217	215	198	206	237	231	208	204	243	18.0	-0.4
Master of Business Administration	35	55	36	5	21	52	62	35	42	42	40	-23.1	14.3
Master of Music	5	6	11	12	11	19	12	13	22	14	24	26.3	380.0
Master of Public Policy	3	1	10	8	11	6	5	11	16	10	4	-33.3	33.3
Master of Science	12	18	16	17	13	21	15	10	10	16	15	-28.6	25.0
Master of Social Work	0	0	16	27	30	30	27	31	29	27	40	33.3	NA
Professional Science Master's	0	0	0	0	0	0	0	0	5	19	19	NA	NA
Specialist in Education	10	3	4	9	11	3	7	10	9	6	6	100.0	-40.0
Doctor of Industrial Technology	2	11	5	2	2	1	3	0	1	1	2	100.0	0.0
Doctor of Education	6	2	7	10	8	9	15	8	15	9	18	100.0	200.0

Source: Office of the Registrar

*The Bachelor of Technology Degree was dropped effective Fall 1996 when the Bachelor of Technology Major in Construction Management was changed to a Bachelor of Science Major in Construction Management.



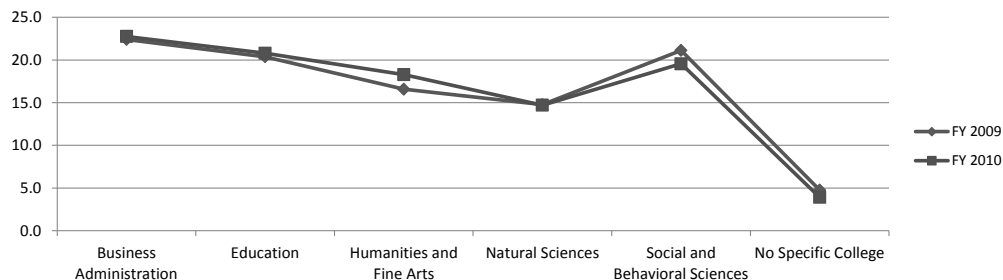
Degrees Granted by College 2009-2010



28

	Baccalaureates				Master's				Specialists				Doctorates			
	2008-2009		2009-2010		2008-2009		2009-2010		2008-2009		2009-2010		2008-2009		2009-2010	
	N	%	N	%	N	%	N	%	N	%	N	%	N	%	N	%
Total Degrees Granted	2,268	100	2,347	100	467	100	561	100	6	100	6	100	10	100	20	100
Business Administration	508	22.4	534	22.8	78	16.7	69	12.3	-	-	-	-	-	-	-	-
Education	462	20.4	488	20.8	162	34.7	227	40.5	6	100.0	6	100.0	9	90.0	18	90.0
Humanities and Fine Arts	376	16.6	429	18.3	107	22.9	109	19.4	-	-	-	-	-	-	-	-
Natural Sciences	335	14.8	345	14.7	57	12.2	59	10.5	-	-	-	-	1	10.0	2	10.0
Social and Behavioral Sciences	479	21.1	459	19.6	62	13.3	92	16.4	-	-	-	-	-	-	-	-
No Specific College	108	4.8	92	3.9	1	0.2	5	0.9	-	-	-	-	-	-	-	-

Source: Office of the Registrar



2009-2010 Degrees by College
2,934 Degrees Granted

Undergraduate Retention and Graduation Rates 1992-2010

Admit Year	Total First Time Freshmen	Continuing 2nd Year		Graduating 4th Year		Graduating 6th Year	
		N	%	N	%	N	%
1992	1,659	1,350	81.4	435	26.2	1,032	62.2
1993	1,807	1,449	80.2	489	27.1	1,136	62.9
1994	1,856	1,498	80.7	539	29.0	1,155	62.2
1995	2,007	1,641	81.8	604	30.1	1,289	64.2
1996	2,012	1,649	82.0	673	33.4	1,338	66.5
1997	1,919	1,582	82.4	552	28.8	1,252	65.2
1998	1,982	1,605	81.0	585	29.5	1,274	64.3
1999	2,124	1,729	81.4	712	33.5	1,380	65.0
2000	2,218	1,863	84.0	751	33.9	1,488	67.1
2001	2,064	1,681	81.4	666	32.3	1,342	65.0
2002	1,822	1,468	80.6	610	33.5	1,147	63.0
2003	1,740	1,417	81.4	613	35.2	1,157	66.5
2004	1,652	1,337	80.9	581	35.2	1,107	67.0
2005	1,694	1,390	82.1	604	35.7		
2006	1,684	1,386	82.3	635	37.7		
2007	1,922	1,608	83.7				
2008	1,976	1,627	82.3				
2009	1,913	1,582	82.5				
2010	1,942						

Source: Office of the Registrar

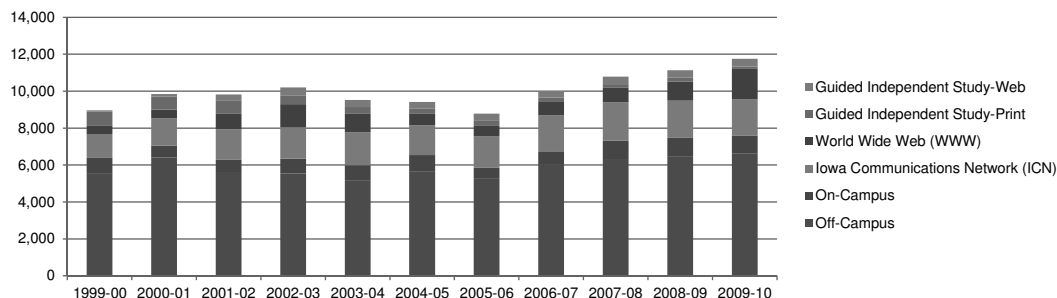
Continuing Education Credit Enrollment Trends 2000-2010



30

	1999 - 2000	2000 - 2001	2001 - 2002	2002 - 2003	2003 - 2004	2004 - 2005	2005 - 2006	2006 - 2007	2007 - 2008	2008 - 2009	2009 - 2010
Total	8,964	9,845	9,819	10,203	9,528	9,413	8,778	9,984	10,783	11,127	11,749
Annual Percent Change	-0.9	9.8	-0.3	3.9	-6.6	-1.2	-6.7	13.7	8.0	3.2	5.6
Off-Campus	5,561	6,408	5,617	5,543	5,182	5,629	5,246	6,048	6,330	6,477	6,617
On-Campus	823	645	689	809	814	910	596	700	1001	995	989
Iowa Communications Network (ICN)	1,268	1,484	1,631	1,686	1,768	1,606	1,719	1,936	2,070	2,009	1,967
World Wide Web (WWW)	494	464	828	1,260	1,002	630	595	735	782	1,044	1,633
Guided Independent Study-Print	743	700	706	454	372	294	273	229	200	197	130
Guided Independent Study-Web	75	144	348	451	390	344	349	336	400	405	413

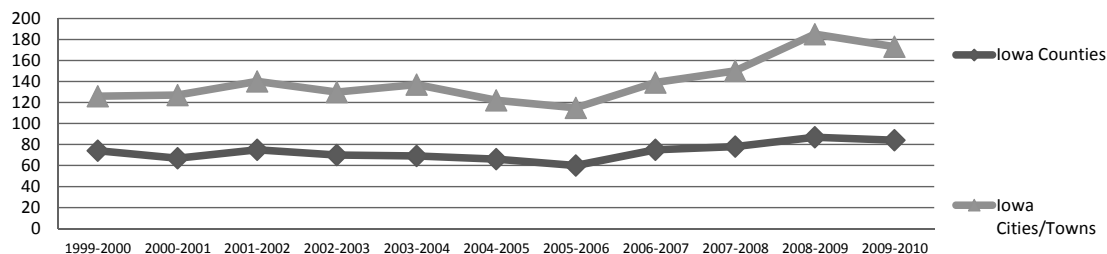
Source: *Continuing Education and Special Programs*



Continuing Education Courses Offered 2000-2010

	Iowa Counties	Iowa Cities/Towns	Number of Off-Campus Degree and Certificate Programs
1999-2000	74	126	20
2000-2001	67	127	20
2001-2002	75	140	20
2002-2003	70	130	18
2003-2004	69	137	19
2004-2005	66	122	20
2005-2006	60	115	21
2006-2007	75	139	22
2007-2008	78	150	21
2008-2009	87	185	23
2009-2010	84	173	24

Continuing Education Course Locations Offered



Source: *Continuing Education and Special Programs*

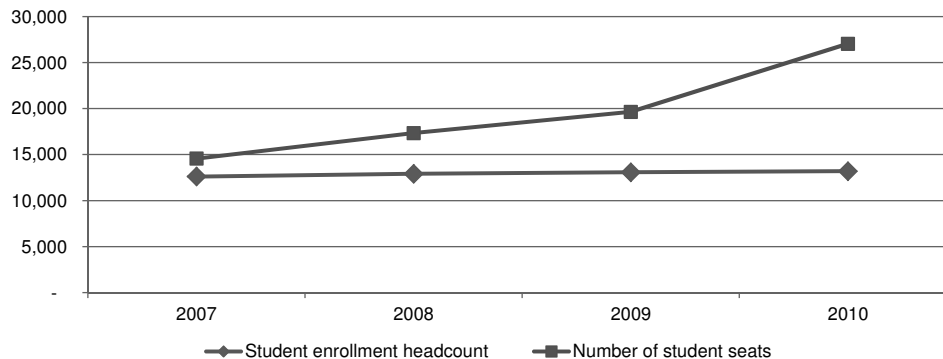
Web-based Learning Management System (LMS) 2007-2010



32

		Fall			
	2007	2008	2009	2010	
Student enrollment headcount	12,609	12,908	13,080	13,201	
Number of unique student users enrolled in LMS	8,723	9,658	10,108	11,263	
Number of student seats	14,570	17,333	19,644	27,032	
Number of instructors or designers	293	435	411	385	
Number of active sections in LMS	634	792	899	1,192	

Source: ITS - Educational Technology



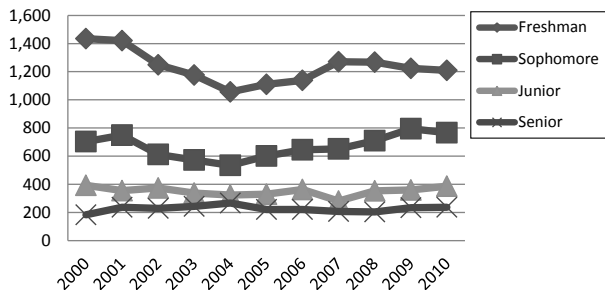
* A student seat is defined as access to the system by one student in connection with multiple learning contexts (e.g. one student in three online sections equals three student seats).

Fall Semester Residence Hall Occupancy by Gender and Level 2000-2010

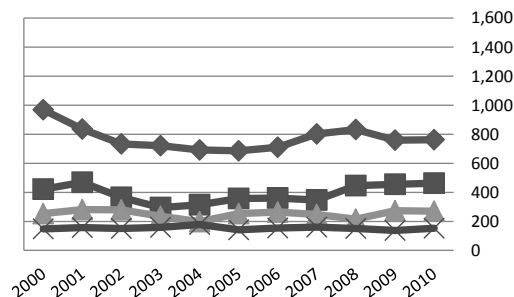
	Female				
	Freshman	Sophomore	Junior	Senior	Unclassified & Graduates
2000	1,434	703	392	183	66
2001	1,421	749	354	237	66
2002	1,249	611	374	228	81
2003	1,176	572	338	243	52
2004	1,057	535	323	266	95
2005	1,110	600	330	221	120
2006	1,138	645	363	220	103
2007	1,270	651	280	207	109
2008	1,267	710	353	203	104
2009	1,223	794	359	233	65
2010	1,209	767	386	237	101

	Male				
	Freshman	Sophomore	Junior	Senior	Unclassified & Graduates
2000	968	421	254	148	47
2001	835	469	281	157	44
2002	733	365	279	151	50
2003	721	295	236	159	26
2004	692	314	198	179	83
2005	686	357	253	142	79
2006	711	360	264	155	82
2007	802	347	247	161	103
2008	833	446	215	151	90
2009	759	455	274	138	69
2010	763	463	270	153	79

Undergraduates - Female



Male





**University of
Northern
Iowa**

Alumni

Alumni

Alumni



**University of
Northern
Iowa**

Alumni

Total Living Alumni by College 2004-2010

College	2004		2005		2006		2007		2008		2009		2010	
	N	%	N	%	N	%	N	%	N	%	N	%	N	%
Sub-total Alumni***	91,400	100	93,683	100	95,559	100	97,541	100	99,940	100	105,056	100	107,208	100
TOTAL living Alumni****					94,916		96,853		98,967		101,219		103,267	
Business Administration	17,840	19.5	18,418	19.7	18,974	19.9	19,513	20.0	20,019	20.0	20,554	19.6	21,047	19.6
Education*	31,696	34.7	32,091	34.3	32,200	33.7	32,487	33.3	32,818	32.8	33,122	31.5	33,502	31.2
Humanities and Fine Arts	15,491	16.9	15,945	17.0	16,437	17.2	16,889	17.3	17,355	17.4	17,799	16.9	18,233	17.0
Natural Sciences	12,190	13.3	12,518	13.4	12,793	13.4	13,056	13.4	13,129	13.1	13,654	13.0	13,974	13.0
Social and Behavioral Sciences	14,183	15.5	14,711	15.7	15,155	15.9	15,596	16.0	16,619	16.6	16,643	15.8	17,089	15.9
College Unassigned**											3,284	3.1	3,363	3.1

Source: Alumni Association

*Includes Alumni earning only Teaching Certificates Awarded pre-1960.

** Includes Individual Studies, General Studies and Liberal Studies majors + others

*** Alumni having earned degrees in different colleges are counted in each college; alumni earning multiple degrees in the same college are counted only once for that college.

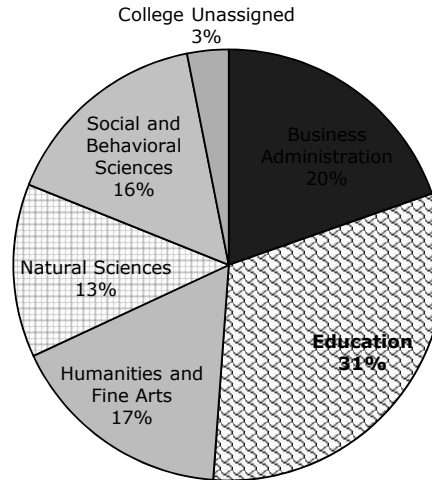
****Grads counted a single time even when earning multiple degree(s).



Total Living Alumni by College



36



Alumni = 107,208

Alumni by State 2010*

State	Alumni	State	Alumni
Alabama	171	Montana	166
Alaska	130	Nebraska	1,621
Arizona	1,956	Nevada	349
Arkansas	294	New Hampshire	65
California	2,565	New Jersey	212
Colorado	2,475	New Mexico	256
Connecticut	133	New York	486
Delaware	37	North Carolina	613
Florida	1,585	North Dakota	100
Georgia	632	Ohio	613
Hawaii	147	Oklahoma	319
Idaho	142	Oregon	513
Illinois	3,987	Pennsylvania	366
Indiana	651	Rhode Island	34
Iowa	62,059	South Carolina	255
Kansas	1,391	South Dakota	481
Kentucky	210	Tennessee	425
Louisiana	125	Texas	2,994
Maine	54	Utah	110
Maryland	309	Vermont	32
Massachusetts	207	Virginia	670
Michigan	601	Washington	768
Minnesota	5,049	West Virginia	25
Mississippi	71	Wisconsin	2,209
Missouri	1,948	Wyoming	148
		District of Columbia	68

Source: Alumni Association

*As of September 2010



Alumni by Iowa County 2010

County	Alumni	County	Alumni	County	Alumni	County	Alumni
Adair	59	Decatur	35	Johnson	1,964	Pocahontas	98
Adams	25	Delaware	423	Jones	342	Polk	10,272
Allamakee	251	Des Moines	342	Keokuk	142	Pottawattamie	615
Appanoose	79	Dickinson	337	Kossuth	326	Poweshiek	372
Audubon	73	Dubuque	1,754	Lee	222	Ringgold	37
Benton	675	Emmet	108	Linn	5,737	Sac	148
Black Hawk	10,669	Fayette	537	Louisa	104	Scott	2,369
Boone	356	Floyd	511	Lucas	54	Shelby	103
Bremer	1,636	Franklin	245	Lyon	43	Sioux	138
Buchanan	876	Fremont	31	Madison	170	Story	1,283
Buena Vista	216	Greene	151	Mahaska	231	Tama	630
Butler	746	Grundy	787	Marion	371	Taylor	29
Calhoun	190	Guthrie	140	Marshall	934	Union	78
Carroll	421	Hamilton	330	Mills	83	Van Buren	37
Cass	123	Hancock	220	Mitchell	272	Wapello	323
Cedar	306	Hardin	611	Monona	54	Warren	771
Cerro Gordo	1,285	Harrison	84	Monroe	57	Washington	315
Cherokee	119	Henry	204	Montgomery	50	Wayne	38
Chickasaw	426	Howard	229	Muscatine	513	Webster	646
Clarke	53	Humboldt	206	O'Brien	142	Winnebago	265
Clay	248	Ida	82	Osceola	34	Winneshiek	496
Clayton	361	Iowa	260	Page	80	Woodbury	585
Clinton	614	Jackson	293	Palo Alto	173	Worth	175
Crawford	130	Jasper	508	Plymouth	208	Wright	290
Dallas	1,096	Jefferson	123				
Davis	56						
						TOTAL	62,059

Source: Alumni Association

Post-Graduation Status of 2009-2010 Bachelor's Degree Recipients*

College	Graduates	No Information	Total Responding	Employed**	Graduate Education	Undergrad Education
Business	498	223	275	172	50	16
Education	471	241	230	141	27	21
Humanities & Fine Arts	402	196	206	130	33	10
Natural Sciences	317	147	170	109	35	6
Social & Behavioral Sciences	428	185	243	143	46	15
TOTAL	2,116	992	1,124	695	191	68
(1,124 of 2,116 (695 of 1,124) (191 of 1,124) (68 of 1,124)						
			53.1%	61.8%	17.0%	6.05%

Source: The Career Center

*Method: Data was collected through a survey of graduates attending commencement exercises and follow-up telephone calls.



Post-Graduation Status of 2009-2010 Graduate Degree Recipients*

College	Graduates	No Information	Total Responding	Employed**	Continuing Education	Other
Business	58	26	32	30	1	1
Education	157	90	67	59	4	4
Humanities & Fine Arts	87	31	56	48	6	2
Natural Sciences	46	21	25	21	2	2
Social & Behavioral Sciences	48	24	24	18	3	3
TOTAL	396	192	204	176	16	12
			(204 of 396)	(176 of 204)	(16 of 204)	(12 of 204)
			51.5%	86.3%	7.8%	5.9%

**63% Employed in Iowa

Source: Office of Institutional Research

*Method: Data was collected through a survey of graduates attending commencement exercises.

Undergraduate Plans for Further Education 2009-2010*

College	Completed Survey Item		Accepted to a Professional Program		Currently Applying to Programs		Accepted to Another Undergraduate Program	
	N	%	N	%	N	%	N	%
TOTAL	974	100	157	100	117	100	35	100
Business Administration	237	23.8	43	26.7	21	17.6	16	45.7
Education	193	19.4	32	19.9	7	5.9	5	14.3
Humanities and Fine Arts	179	18.0	28	17.4	25	21.0	2	5.7
Natural Sciences	155	15.6	24	14.9	24	20.2	3	8.6
Social and Behavioral Sciences	209	21.0	30	18.6	40	33.6	9	25.7
			(157 of 974)		(117 of 974)		(35 of 974)	
			16.1%		12.0%		3.6%	

Source: *Office of Institutional Research*

*December 2009 and May 2010 Graduating Senior Program Surveys



Graduate Plans for Further Education 2009-2010^{*}

College	Completed Survey Item		Accepted to a Graduate/Professional Program		Currently Applying to Programs		No Definite Plans for More Education Right Now	
	N	%	N	%	N	%	N	%
TOTAL	181	100.00%	11	6.08%	15	8.29%	155	85.64%
Business Administration	31	17.13%	2	6.45%	0	0.00%	29	93.55%
Education	60	33.15%	1	1.67%	2	3.33%	57	95.00%
Humanities and Fine Arts	45	24.86%	4	8.89%	8	17.78%	33	73.33%
Natural Sciences	24	13.26%	1	4.17%	4	16.67%	19	79.17%
Social and Behavioral Sciences	21	11.60%	3	14.29%	1	4.76%	17	80.95%
			(11 of 181)		(15 of 181)		(155 of 181)	
			6.1%		8.3%		85.6%	

Source: Office of Institutional Research

^{*}December 2009 and May 2010 Graduate Program Surveys



**University of
Northern
Iowa**

Faculty & Staff



Faculty & Staff

Fall 2010 Faculty Profile by College*

	Total University	Business	Education	H&F Arts	Natural Sciences	S&B Sciences	No Specific	Library
Faculty	824	84	216	208	145	144	10	17
Full-Time	623	63	161	159	108	107	9	16
Part-Time	201	21	55	49	37	37	1	1
Female	388	25	139	110	35	66	4	9
Male	436	59	77	98	110	78	6	8
American Indian/Alaskan Native	1	0	1	0	0	0	0	0
Asian/Pacific Islander	49	13	2	9	18	6	1	0
Black/African American	23	2	6	5	4	5	0	1
Hispanic/Latino	16	1	4	5	2	4	0	0
Native Hawaiian/Other Pacific Islander	1	0	0	1	0	0	0	0
Two or more races	9	3	1	3	1	1	0	0
White	725	65	202	185	120	128	9	16
Professors	198	23	33	52	50	37	1	2
Associate Professors	223	25	45	54	33	48	6	12
Assistant Professors	122	9	26	32	26	26	1	2
Instructors/Lecturers	281	27	112	70	36	33	2	1
Tenured	463	46	119	109	83	85	7	14
Tenure-Track	122	11	27	29	26	26	0	3
Non Tenure-Track	239	27	70	70	36	33	3	0

Source: Office of Institutional Research

*Excludes Deans and above



Faculty by College 2005-2010*



44

TOTAL

Business

Education

Humanities and Fine Arts

Natural Sciences

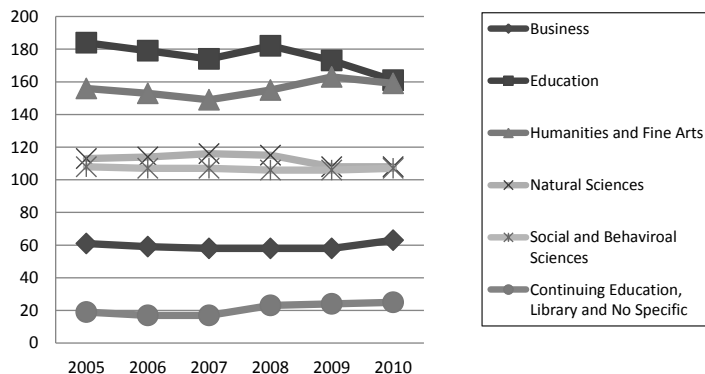
Social and Behavioral Sciences

Continuing Education, Library and No Specific

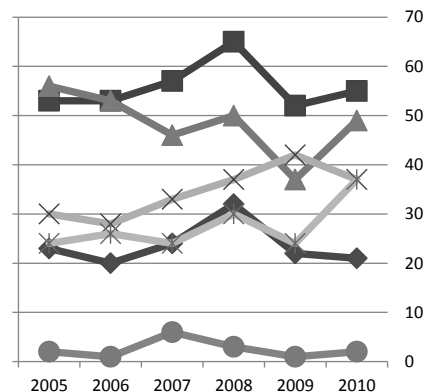
Full-Time						
2005	2006	2007	2008	2009	2010	
641	629	621	639	632	623	
61	59	58	58	58	63	
184	179	174	182	173	161	
156	153	149	155	163	159	
113	114	116	115	108	108	
108	107	107	106	106	107	
19	17	17	23	24	25	

Part-Time						
2005	2006	2007	2008	2009	2010	
188	181	190	217	178	201	
23	20	24	32	22	21	
53	53	57	65	52	55	
56	53	46	50	37	49	
30	28	33	37	42	37	
24	26	24	30	24	37	
2	1	6	3	1	2	

Faculty: Full-Time



Part-Time



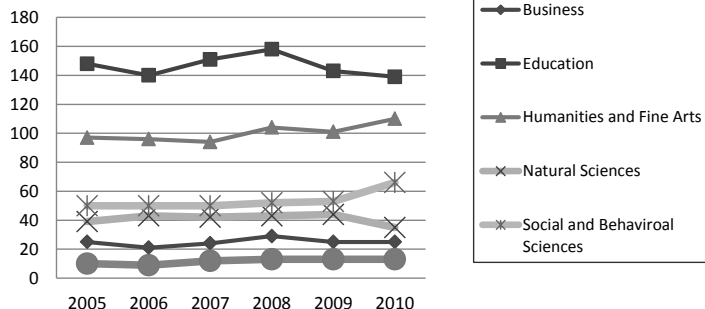
Source: Office of Institutional Research

*Excludes Deans and above

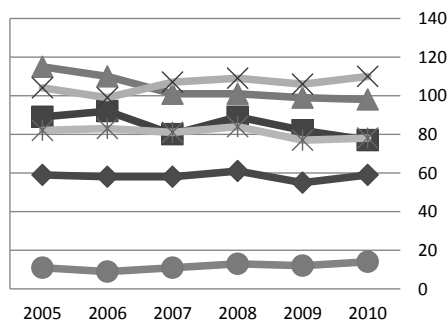
Faculty by College and Gender 2005-2010*

	Female						Male					
	2005	2006	2007	2008	2009	2010	2005	2006	2007	2008	2009	2010
TOTAL	369	359	373	399	379	388	460	451	438	457	431	436
Business	25	21	24	29	25	25	59	58	58	61	55	59
Education	148	140	151	158	143	139	89	92	80	89	82	77
Humanities and Fine Arts	97	96	94	104	101	110	115	110	101	101	99	98
Natural Sciences	39	43	42	43	44	35	104	99	107	109	106	110
Social and Behavioral Sciences	50	50	50	52	53	66	82	83	81	84	77	78
Continuing Education, Library and No Specific	10	9	12	13	13	13	11	9	11	13	12	14

Faculty: Female



Male



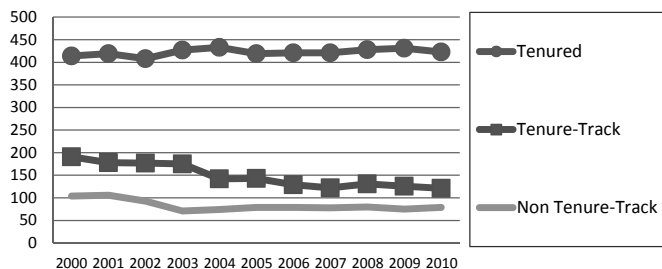
Source: Office of Institutional Research

*Excludes Deans and above

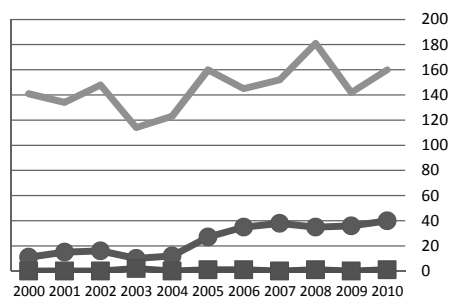
Faculty by Tenure Status 2000-2010*

Fall Semester	Tenured		Tenure-Track		Non Tenure-Track	
	Full-Time	Part-Time	Full-Time	Part-Time	Full-Time	Part-Time
2000	414	11	191	0	104	141
2001	419	15	178	0	106	134
2002	408	16	177	0	93	148
2003	427	10	175	2	71	114
2004	433	12	142	0	74	123
2005	419	27	143	1	79	160
2006	421	35	129	1	79	145
2007	421	38	122	0	78	152
2008	428	35	131	1	80	181
2009	431	36	126	0	75	142
2010	423	40	121	1	79	160

Faculty: Full-Time



Part-Time



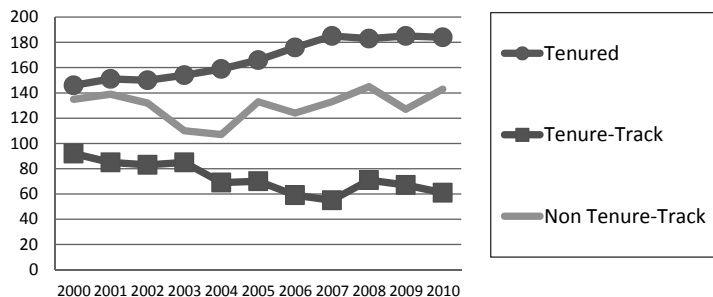
Source: Office of Institutional Research

*Excludes Deans and above

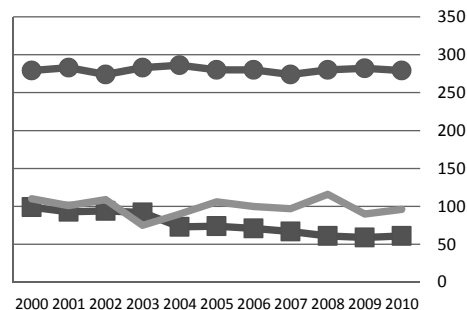
Faculty Tenure Status by Gender 2000-2010

Fall Semester	Tenured		Tenure-Track		Non Tenure-Track	
	Female	Male	Female	Male	Female	Male
2000	146	279	92	99	135	110
2001	151	283	85	93	139	101
2002	150	274	83	94	132	109
2003	154	283	85	92	110	75
2004	159	286	69	73	107	90
2005	166	280	70	74	133	106
2006	176	280	59	71	124	100
2007	185	274	55	67	133	97
2008	183	280	71	61	145	116
2009	185	282	67	59	127	90
2010	184	279	61	61	143	96

Faculty: Female



Male



Source: Office of Institutional Research

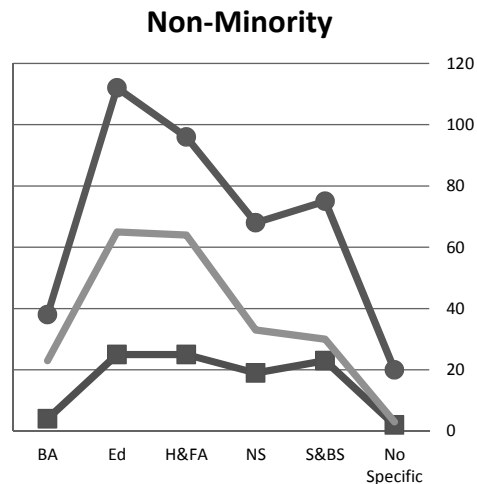
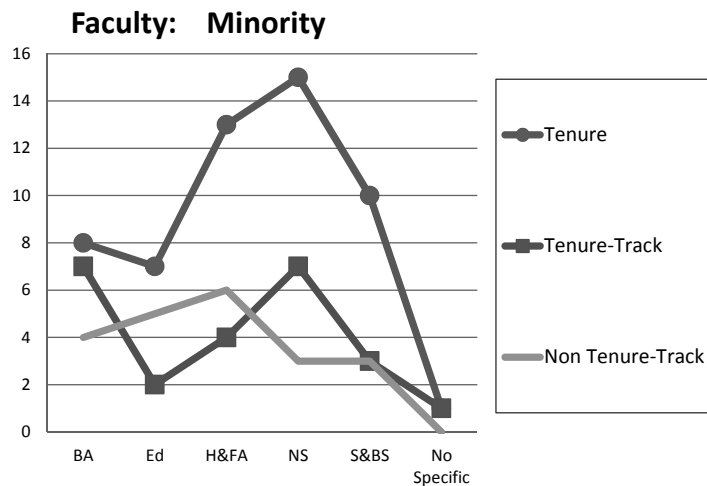
*Excludes Deans and above

Fall 2010 Faculty by Tenure Status and Minority



48

	Tenure		Tenure-Track		Non Tenure-Track	
	Minority	Non-minority	Minority	Non-minority	Minority	Non-minority
TOTAL	54	409	24	98	21	218
Business	8	38	7	4	4	23
Education	7	112	2	25	5	65
Humanities and Fine Arts	13	96	4	25	6	64
Natural Sciences	15	68	7	19	3	33
Social and Behavioral Sciences	10	75	3	23	3	30
Continuing Education, Library and No Specific	1	20	1	2	0	3

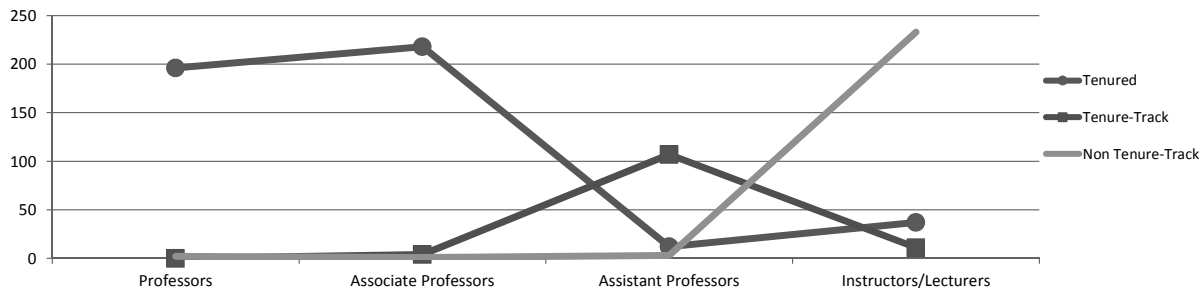


Source: Office of Institutional Research
Excludes Deans and above

Faculty Tenure Status by Rank 2000-2010*

	Tenured				Tenure-Track				Non Tenure-Track			
	Professors	Associate Professors	Assistant Professors	Instructors/Lecturers	Professors	Associate Professors	Assistant Professors	Instructors/Lecturers	Professors	Associate Professors	Assistant Professors	Instructors/Lecturers
2000	164	202	30	29	0	9	148	34	1	0	11	218
2001	180	197	29	28	0	8	143	27	4	1	10	207
2002	180	191	25	28	0	7	143	27	5	1	10	225
2003	180	205	24	28	0	6	150	21	4	0	5	176
2004	184	215	18	28	0	4	122	16	4	0	6	187
2005	187	213	17	29	0	2	126	16	4	0	4	231
2006	188	217	14	37	0	2	116	12	4	0	6	214
2007	181	225	12	41	0	1	109	12	4	0	6	220
2008	188	222	12	41	0	1	117	14	5	0	6	250
2009	199	217	12	39	0	4	112	10	5	0	3	209
2010	196	218	12	37	0	4	107	11	2	1	3	233

Fall 2010 Faculty Tenure Status by Rank



Source: Office of Institutional Research

*Excludes Deans and above



Faculty by College and Tenure Status 2005-2010*



50

Fall Semester	Total University	Business	Education	Humanities and Fine Arts	Natural Sciences	Social and Behavioral Sciences	Continuing Ed No Specific and Library
2005							
Tenured	446	47	117	111	82	74	15
Tenure-Track	144	11	40	30	26	33	4
Non Tenure-Track	239	26	80	71	35	25	2
2006							
Tenured	456	45	126	111	84	75	15
Tenure-Track	130	10	31	26	30	30	3
Non Tenure-Track	224	24	75	69	28	28	0
2007							
Tenured	459	40	129	107	87	77	19
Tenure-Track	122	10	30	27	28	24	3
Non Tenure-Track	230	32	72	61	34	30	1
2008							
Tenured	463	41	134	105	85	79	19
Tenure-Track	132	9	32	35	31	22	3
Non Tenure-Track	261	40	81	65	36	35	4
2009							
Tenured	467	45	131	108	83	80	20
Tenure-Track	126	8	27	33	31	24	3
Non Tenure-Track	217	27	67	59	36	26	2
2010							
Tenured	463	46	119	109	83	85	21
Tenure-Track	122	11	27	29	26	26	3
Non Tenure-Track	239	27	70	70	36	33	3

Source: Office of Institutional Research

*Excludes Deans and above

Faculty by College, Gender and Tenure Status 2006-2010

College	Full-Time										Part-Time										Total				
	06	07	08	09	10	06	07	08	09	10	06	07	08	09	10	06	07	08	09	10	06	07	08	09	10
	F	F	F	F	F	M	M	M	M	M	F	F	F	F	F	M	M	M	M	M					
Faculty	269	273	285	283	270	360	351	354	349	353	90	103	114	96	118	91	87	103	82	83	810	814	856	810	824
Tenured	160	168	167	168	164	261	253	261	263	259	16	17	16	17	20	19	21	19	19	20	456	459	463	467	463
Tenure-Track	59	58	70	67	60	70	67	61	59	61	0	0	1	0	1	1	0	0	0	0	130	125	132	126	122
Non Tenure-Track	50	47	48	48	46	29	31	32	27	33	74	86	97	79	97	71	66	84	63	63	224	230	261	217	239
Business Administration	18	18	17	18	18	41	40	41	40	45	3	6	12	7	7	17	18	20	15	14	79	82	90	80	84
Tenured	8	9	9	10	10	32	29	30	33	34	1	1	1	1	1	4	1	1	1	1	45	40	41	45	46
Tenure-Track	2	2	2	3	3	8	8	7	5	8	0	0	0	0	0	0	0	0	0	0	10	10	9	8	11
Non Tenure-Track	8	7	6	5	5	1	3	4	2	3	2	5	11	6	6	13	17	19	14	13	24	32	40	27	27
Education	110	111	115	107	99	69	63	67	66	62	30	40	43	36	40	23	17	22	16	15	232	231	247	225	216
Tenured	62	65	65	64	59	48	48	51	49	41	9	10	12	13	12	7	6	6	5	7	126	129	134	131	119
Tenure-Track	20	24	27	23	19	11	6	4	4	7	0	0	1	0	1	0	0	0	0	0	31	30	32	27	27
Non Tenure-Track	28	22	23	20	21	10	9	12	13	14	21	30	30	23	27	16	11	16	11	8	75	72	81	67	70
Humanities and Fine Arts	68	67	74	79	76	85	82	81	84	83	28	27	30	22	34	25	19	20	15	15	206	195	205	200	208
Tenured	47	47	46	48	47	60	57	57	59	60	2	1	1	0	2	2	2	1	1	0	111	107	105	108	109
Tenure-Track	12	11	18	16	15	14	16	17	17	14	0	0	0	0	0	0	0	0	0	0	26	27	35	33	29
Non Tenure-Track	9	9	10	15	14	11	9	7	8	9	26	26	29	22	32	23	17	19	14	15	69	61	65	59	70

Faculty by College, Gender and Tenure Status 2006-2010* (Continued)



52

College	Full-Time										Part-Time										Total				
	06	07	08	09	10	06	07	08	09	10	06	07	08	09	10	06	07	08	09	10	06	07	08	09	10
	F	F	F	F	F	M	M	M	M	M	F	F	F	F	F	M	M	M	M	M					
Natural Sciences	28	29	28	25	21	86	87	87	83	87	15	13	15	19	14	13	20	22	23	23	142	149	152	150	145
Tenured	14	15	14	12	13	63	63	61	59	59	2	2	2	2	2	5	7	8	10	9	84	87	85	83	83
Tenure-Track	11	8	9	9	4	19	20	22	22	22	0	0	0	0	0	0	0	0	0	0	30	28	31	31	26
Non Tenure-Track	3	6	5	4	4	4	4	4	2	6	13	11	13	17	12	8	13	14	13	14	28	34	36	36	36
Social and Behavioral Sciences	36	39	39	41	44	71	71	67	65	63	14	14	13	12	22	12	10	17	12	15	133	134	136	130	144
Tenured	21	24	25	25	26	52	50	52	53	54	2	1	0	1	3	0	2	2	1	2	75	77	79	80	85
Tenure-Track	13	12	12	14	17	16	15	10	10	9	0	0	0	0	0	1	0	0	0	0	30	27	22	24	26
Non Tenure-Track	2	3	2	2	1	3	6	5	2	0	12	13	13	11	19	11	8	15	11	13	28	30	35	26	33
Continuing Ed & Special Programs	0	0	0	0	0	0	0	0	0	0	0	0	0	0	0	0	0	0	0	0	0	0	0	0	0
Tenured	0	0	0	0	0	0	0	0	0	0	0	0	0	0	0	0	0	0	0	0	0	0	0	0	0
Tenure-Track	0	0	0	0	0	0	0	0	0	0	0	0	0	0	0	0	0	0	0	0	0	0	0	0	0
Non Tenure-Track	0	0	0	0	0	0	0	0	0	0	0	0	0	0	0	0	0	0	0	0	0	0	0	0	0
No Specific College	0	0	2	3	3	0	0	4	4	6	0	3	1	0	1	0	2	0	0	0	0	5	7	7	10
Tenured	0	0	1	2	2	0	0	4	4	5	0	2	0	0	0	0	2	0	0	0	0	4	5	6	7
Tenure-Track	0	0	0	0	0	0	0	0	0	0	0	0	0	0	0	0	0	0	0	0	0	0	0	0	0
Non Tenure-Track	0	0	1	1	1	0	0	0	0	1	0	1	1	0	1	0	0	0	0	0	0	1	2	1	3
Library	9	9	10	10	9	8	8	7	7	7	0	0	0	0	0	1	1	2	1	1	18	18	19	18	17
Tenured	8	8	7	7	7	6	6	6	6	6	0	0	0	0	0	1	1	1	1	1	15	15	14	14	14
Tenure-Track	1	1	2	2	2	2	2	1	1	1	0	0	0	0	0	0	0	0	0	0	3	3	3	3	3
Non Tenure-Track	0	0	1	1	0	0	0	0	0	0	0	0	0	0	0	0	0	1	0	0	0	0	2	1	0

Source: Office of Institutional Research

*Excludes Deans and above

Faculty by College and Rank 2005-2010*

Fall Semester	Total			Humanities	Natural	Social and	Continuing Ed
2005	University	Business	Education	and Fine Arts	Sciences	Behavioral Sciences	No Specific and Library
Professors	191	22	34	54	44	33	4
Associate Professors	215	21	47	56	39	42	10
Assistant Professors	147	15	35	31	29	33	4
Instructors/Lecturers	276	26	121	71	31	24	3
2006							
Professors	192	21	36	53	46	32	4
Associate Professors	219	22	46	57	38	45	11
Assistant Professors	136	13	33	27	32	30	1
Instructors/Lecturers	263	23	117	69	26	26	2
2007							
Professors	185	18	32	51	46	32	6
Associate Professors	226	22	51	55	41	45	12
Assistant Professors	127	12	29	28	29	27	2
Instructors/Lecturers	273	30	119	61	33	27	3
2008							
Professors	193	19	37	51	47	35	4
Associate Professors	223	22	49	54	38	45	15
Assistant Professors	135	10	30	36	32	23	4
Instructors/Lecturers	305	39	131	64	35	33	3
2009							
Professors	204	22	38	54	51	35	4
Associate Professors	221	24	50	53	32	46	16
Assistant Professors	127	8	25	34	32	24	4
Instructors/Lecturers	258	26	112	59	35	25	1
2010							
Professors	198	23	33	52	50	37	3
Associate Professors	223	25	45	54	33	48	18
Assistant Professors	122	9	26	32	26	26	3
Instructors/Lecturers	281	27	112	70	36	33	3

Source: Office of Institutional Research

*Excludes Deans and above



Faculty by College, Gender and Rank 2006-2010

College	Full-Time										Part-Time										Total				
	06	07	08	09	10	06	07	08	09	10	06	07	08	09	10	06	07	08	09	10	06	07	08	09	10
	F	F	F	F	F	M	M	M	M	M	F	F	F	F	F	M	M	M	M	M					
Faculty	269	270	285	283	270	360	351	354	349	353	90	103	114	96	118	91	87	103	82	83	810	811	856	810	824
Professors	40	38	45	45	37	133	126	125	137	136	10	10	10	10	13	9	11	13	12	12	192	185	193	204	198
Associate Professors	92	98	92	95	98	117	116	123	115	113	5	5	3	5	5	5	7	5	6	7	219	226	223	221	223
Assistant Professors	55	51	63	61	56	75	70	68	62	64	2	2	2	2	0	4	4	2	2	2	136	127	135	127	122
Instructors/Lecturers	82	83	85	82	79	35	39	38	35	40	73	86	99	79	100	73	65	83	62	62	263	273	305	258	281
Business Administration	18	18	17	18	18	41	40	41	40	45	3	6	12	7	7	17	18	20	15	14	79	82	90	80	84
Professors	1	1	1	2	2	17	16	17	19	20	1	1	1	1	1	2	0	0	0	0	21	18	19	22	23
Associate Professors	7	8	8	8	8	15	14	14	16	17	0	0	0	0	0	0	0	0	0	0	22	22	22	24	25
Assistant Professors	2	2	2	3	3	8	7	6	3	4	0	0	0	0	0	3	3	2	2	2	13	12	10	8	9
Instructors/Lecturers	8	7	6	5	5	1	3	4	2	4	2	5	11	6	6	12	15	18	13	12	23	30	39	26	27
Education	110	111	115	107	99	69	63	67	66	62	30	40	43	36	40	23	17	22	16	15	232	231	247	225	216
Professors	11	10	12	9	8	21	18	19	21	17	4	4	6	7	6	0	0	0	1	2	36	32	37	38	33
Associate Professors	22	25	23	27	24	18	19	20	17	14	3	4	3	4	4	3	3	3	2	3	46	51	49	50	45
Assistant Professors	19	21	22	18	16	13	7	7	6	10	1	1	1	1	0	0	0	0	0	0	33	29	30	25	26
Instructors/Lecturers	58	55	58	53	51	17	19	21	22	21	22	31	33	24	30	20	14	19	13	10	117	119	131	112	112
Humanities and Fine Arts	68	67	74	79	76	85	82	81	84	83	28	27	30	22	34	25	19	20	15	15	206	195	205	200	208
Professors	18	18	19	20	17	31	30	29	33	32	2	1	1	0	2	2	2	2	1	1	53	51	51	54	52
Associate Professors	29	29	27	28	29	27	25	26	24	25	0	0	0	0	0	1	1	1	1	0	57	55	54	53	54
Assistant Professors	11	10	17	15	15	16	18	19	19	17	0	0	0	0	0	0	0	0	0	0	27	28	36	34	32
Instructors/Lecturers	10	10	11	16	15	11	9	7	8	9	26	26	29	22	32	22	16	17	13	14	69	61	64	59	70

Faculty by College, Gender and Rank 2006-2010* (Continued)

College	Full-Time										Part-Time										Total				
	06	07	08	09	10	06	07	08	09	10	06	07	08	09	10	06	07	08	09	10	06	07	08	09	10
	F	F	F	F	F	M	M	M	M	M	F	F	F	F	F	M	M	M	M	M					
Natural Sciences	28	29	28	25	21	86	87	87	83	87	15	13	15	19	14	13	20	22	23	23	142	149	152	150	145
Professors	4	3	3	3	2	34	33	33	37	38	3	2	2	2	2	5	8	9	9	8	46	46	47	51	50
Associate Professors	10	11	10	8	10	28	30	28	22	21	0	0	0	0	0	0	0	0	2	2	38	41	38	32	33
Assistant Professors	11	8	9	9	4	20	20	22	22	22	1	1	1	1	0	0	0	0	0	0	32	29	32	32	26
Instructors/Lecturers	3	7	6	5	5	4	4	4	2	6	11	10	12	16	12	8	12	13	12	13	26	33	35	35	36
Social and Behavioral Sciences	36	36	39	41	44	71	71	67	65	63	14	14	13	12	22	12	10	17	12	15	133	131	136	130	144
Professors	5	5	8	9	7	27	26	25	25	27	0	0	0	0	2	0	1	2	1	1	32	32	35	35	37
Associate Professors	17	18	17	16	19	26	25	28	29	27	2	1	0	1	1	0	1	0	0	1	45	45	45	46	48
Assistant Professors	12	10	11	14	17	17	17	12	10	9	0	0	0	0	0	1	0	0	0	0	30	27	23	24	26
Instructors/Lecturers	2	3	3	2	1	1	3	2	1	0	12	13	13	11	19	11	8	15	11	13	26	27	33	25	33
Continuing Ed & Special Programs	0	0	0	0	0	0	0	0	0	0	0	0	0	0	0	0	0	0	0	0	0	0	0	0	0
Professors	0	0	0	0	0	0	0	0	0	0	0	0	0	0	0	0	0	0	0	0	0	0	0	0	0
Associate Professors	0	0	0	0	0	0	0	0	0	0	0	0	0	0	0	0	0	0	0	0	0	0	0	0	0
Assistant Professors	0	0	0	0	0	0	0	0	0	0	0	0	0	0	0	0	0	0	0	0	0	0	0	0	0
Instructors/Lecturers	0	0	0	0	0	0	0	0	0	0	0	0	0	0	0	0	0	0	0	0	0	0	0	0	0
No Specific	0	0	2	3	3	0	0	4	4	6	0	3	1	0	1	0	2	0	0	0	0	5	7	7	10
Professors	0	0	2	2	1	0	0	0	0	0	0	2	0	0	0	0	0	0	0	0	0	2	2	2	1
Associate Professors	0	0	0	1	1	0	0	3	3	5	0	0	0	0	0	0	1	0	0	0	0	1	3	4	6
Assistant Professors	0	0	0	0	0	0	0	1	1	1	0	0	0	0	0	0	1	0	0	0	0	1	1	1	1
Instructors/Lecturers	0	0	0	0	1	0	0	0	0	0	0	1	1	0	1	0	0	0	0	0	0	1	1	0	2
Library	9	9	10	10	9	8	8	7	7	7	0	0	0	0	0	1	1	2	1	1	18	18	19	18	17
Professors	1	1	0	0	0	3	3	2	2	2	0	0	0	0	0	0	0	0	0	0	4	4	2	2	2
Associate Professors	7	7	7	7	7	3	3	4	4	4	0	0	0	0	0	1	1	1	1	1	11	11	12	12	12
Assistant Professors	0	0	2	2	1	1	1	1	1	1	0	0	0	0	0	0	0	0	0	0	1	1	3	3	2
Instructors/Lecturers	1	1	1	1	1	1	1	0	0	0	0	0	0	0	0	0	0	1	0	0	2	2	2	1	1

Source: Office of Institutional Research

*Excludes Deans and above



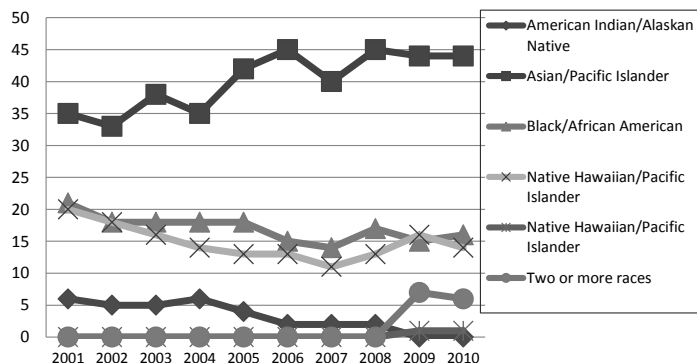
Minority Faculty By Race/Ethnicity 2001-2010*



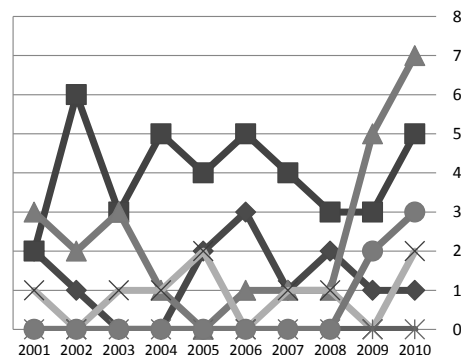
56

	Full-Time										Part-Time									
	2001	2002	2003	2004	2005	2006	2007	2008	2009	2010	2001	2002	2003	2004	2005	2006	2007	2008	2009	2010
Total	82	74	77	73	77	75	67	77	83	81	8	9	7	7	8	9	7	7	11	18
American Indian/Alaskan Native	6	5	5	6	4	2	2	2	0	0	2	1	0	0	2	3	1	2	1	1
Asian/Pacific Islander	35	33	38	35	42	45	40	45	44	44	2	6	3	5	4	5	4	3	3	5
Black/African American	21	18	18	18	18	15	14	17	15	16	3	2	3	1	0	1	1	1	5	7
Hispanic/Latino	20	18	16	14	13	13	11	13	16	14	1	0	1	1	2	0	1	1	0	2
Native Hawaiian/Pacific Islander	-	-	-	-	-	-	-	-	1	1	-	-	-	-	-	-	-	-	0	0
Two or more races	-	-	-	-	-	-	-	-	7	6	-	-	-	-	-	-	-	-	2	3

Minority Faculty: Full-Time



Part-Time



Source: Office of Institutional Research

*Excludes Deans and above

NOTE: The Race/Ethnicity reporting was changed in Fall 2009 semester to implement the new U.S. Department of Education guidelines.

UNI Workforce by Employment Categories 2000-2010

Categories	2000 N	2001 N	2002 N	2003 N	2004 N	2005 N	2006 N	2007 N	2008 N	2009 N	2010 N	5 Yr % Change	10 Yr % Change
Total Workforce**	1,868	1,859	1,823	1,820	1,769	1,776	1,781	1,791	1,850	1,846	1,811	2.0	-3.1
Annual Percent Change	4.9	-0.5	-1.9	-0.2	-2.8	0.4	0.3	0.6	3.3	-0.2	-1.9		
Executive/Managerial	104	101	97	99	98	92	94	102	110	112	98	6.5	-5.8
Faculty-Tenure/Tenure-Track [†]	561	555	549	561	533	547	542	536	550	549	556	1.6	-0.9
Professional/Scientific	508	511	504	513	509	521	529	541	570	577	578	10.9	13.8
Secretarial/Clerical	335	328	323	307	293	285	281	277	275	272	256	-10.2	-23.6
Technical/Paraprofessional	22	28	26	25	25	33	31	31	30	27	24	-27.3	9.1
Skilled Crafts	86	85	85	77	78	68	68	64	63	60	55	-19.1	-36.0
Service/Maintenance	252	251	239	238	233	230	236	240	252	249	244	6.1	-3.2

Source: Office of Human Resources

**Excludes temporary and second appointments

[†]Excludes some faculty with administrative appointments

UNI Workforce by Race/Ethnicity 2003-2010

Categories	2003		2004		2005		2006		2007		2008		2009		2010	
	N	%	N	%	N	%	N	%	N	%	N	%	N	%	N	%
Total Workforce**	1,820	100	1,769	100	1,776	100	1,781	100	1,791	100	1,850	100	1,846	100	1,811	100
Annual Percent Change		-0.2		-2.8		0.4		0.3		0.6		3.3		-0.2		-1.9
American Indian/Alaskan Native	9	0.5	10	0.6	9	0.5	7	0.4	7	0.4	7	0.4	5	0.3	3	0.2
Asian/Pacific Islander	44	2.4	46	2.6	55	3.1	57	3.2	52	2.9	54	2.9	54	2.9	57	3.1
Black/African American	101	5.5	96	5.4	92	5.2	81	4.5	77	4.3	79	4.3	75	4.1	79	4.4
Hispanic/Latino	25	1.4	22	1.2	22	1.2	24	1.3	26	1.5	30	1.6	32	1.7	34	1.9
White	1,640	90.1	1,594	90.1	1,598	90.0	1,612	90.5	1,629	91.0	1,680	90.8	1,669	90.4	1,627	89.8
Native Hawaiian/Pacific Islander	-	-	-	-	-	-	-	-	-	-	-	-	1	0.1	1	0.1
Two or more	-	-	-	-	-	-	-	-	-	-	-	-	10	0.5	10	0.6
Unknown	1	0.1	1	0.1	0	0.0	0	0.0	0	0.0	0	0.0	0	0.0	0	0.0

Source: *Office of Human Resources*

**Excludes temporary and second appointments

NOTE: Fall 2009 semester Race/Ethnicity reporting was changed to implement the U.S. Department of Education guidelines.

UNI Workforce by Employment Categories and Race/Ethnicity Fall 2010

Fall 2010	American Indian/ Alaskan Native	Asian	Black/ African American	Hispanic	White	Native Hawaiian/ Pacific Islander	Two or more	Total
Total Workforce**	3	57	79	34	1,627	1	10	1,811
Executive/Managerial	0	1	5	0	91	0	1	98
Faculty-Tenure/Tenure-Track*	1	42	13	15	479	1	5	556
Professional/Scientific	1	9	25	12	527	0	4	578
Secretarial/Clerical	0	1	11	2	242	0	0	256
Technical/Paraprofessional	0	0	3	1	20	0	0	24
Skilled Crafts	0	1	2	0	52	0	0	55
Service/Maintenance	1	3	20	4	216	0	0	244

Source: *Office of Human Resources*

**Excludes temporary and second appointments

*Excludes some faculty with administrative appointments

NOTE: Fall 2009 semester Race/Ethnicity reporting was changed to implement the U.S. Department of Education guidelines.



UNI Workforce by Employment Categories and College 2009-2010



60

	Total University		Business		Education		Humanities and Fine Arts		Natural Sciences		Social and Behavioral Sciences		No specific College	
	09	10	09	10	09	10	09	10	09	10	09	10	09	10
Total Workforce**	1,846	1,811	116	118	236	230	195	182	165	161	137	144	997	976
Executive/ Managerial	112	98	8	8	13	9	11	9	10	9	9	9	61	54
Faculty-Tenure/ Tenure-Track*	549	556	47	51	149	148	133	134	107	103	99	105	14	15
Professional/ Scientific	577	578	46	45	42	42	29	22	29	30	15	17	416	422
Secretarial/ Clerical	272	256	12	12	30	29	20	16	14	14	14	13	182	172
Technical/ Paraprofessional	27	24	3	2	1	1	1	1	3	3	0	0	19	17
Skilled Crafts	60	55	0	0	0	0	0	0	0	0	0	0	60	55
Service/ Maintenance	249	244	0	0	1	1	1	0	2	2	0	0	245	241

Source: Office of Human Resources

**Excludes temporary and second appointments

*Excludes some faculty with administrative appointments

UNI Workforce by Employment Categories, Gender and College Fall 2010

Fall 2010	Total University		Business		Education		Humanities and Fine Arts		Natural Sciences		Social and Behavioral Sciences		No specific College	
	F	M	F	M	F	M	F	M	F	M	F	M	F	M
Total Workforce**	996	815	49	69	158	72	95	87	51	110	68	76	575	401
Executive/ Managerial	40	58	3	5	6	3	0	9	1	8	3	6	27	27
Faculty-Tenure/ Tenure-Track*	240	316	11	40	92	56	68	66	19	84	44	61	6	9
Professional/ Scientific	328	250	23	22	31	11	11	11	17	13	9	8	237	185
Secretarial/ Clerical	249	7	12	0	28	1	16	0	14	0	12	1	167	5
Technical/ Paraprofessional	6	18	0	2	1	0	0	1	0	3	0	0	5	12
Skilled Crafts	4	51	0	0	0	0	0	0	0	0	0	0	4	51
Service/ Maintenance	129	115	0	0	0	1	0	0	0	2	0	0	129	112

Source: Office of Human Resources

**Excludes temporary and second appointments

*Excludes some faculty with administrative appointments



UNI Workforce by Employment Categories, Level and College Fall 2010



62

Fall 2010	Total University		Business		Education		Humanities and Fine Arts		Natural Sciences		Social and Behavioral Sciences		No specific College	
	F-T	P-T	F-T	P-T	F-T	P-T	F-T	P-T	F-T	P-T	F-T	P-T	F-T	P-T
Total Workforce**	1,659	152	111	7	199	31	172	10	135	26	132	12	910	66
Executive/ Managerial	96	2	8	0	9	0	9	0	8	1	9	0	53	1
Faculty-Tenure/ Tenure-Track*	507	49	49	2	127	21	128	6	91	12	98	7	14	1
Professional/ Scientific	532	46	41	4	38	4	20	2	21	9	14	3	398	24
Secretarial/ Clerical	215	41	11	1	23	6	14	2	11	3	11	2	145	27
Technical/ Paraprofessional	23	1	2	0	1	0	1	0	2	1	0	0	17	0
Skilled Crafts	55	0	0	0	0	0	0	0	0	0	0	0	55	0
Service/ Maintenance	231	13	0	0	1	0	0	0	2	0	0	0	228	13

Source: Office of Human Resources

**Excludes temporary and second appointments

*Excludes some faculty with administrative appointments

UNI Workforce by Employment Categories, Level and Gender Fall 2010

Fall 2010	Total University		Female		Male	
	F-T	P-T	F-T	P-T	F-T	P-T
Total Workforce**	1,659	152	880	116	779	36
Executive/ Managerial	96	2	39	1	57	1
Faculty-Tenure/ Tenure-Track*	507	49	212	28	295	21
Professional/ Scientific	532	46	293	35	239	11
Secretarial/ Clerical	215	41	208	41	7	0
Technical/ Paraprofessional	23	1	6	0	17	1
Skilled Crafts	55	0	4	0	51	0
Service/ Maintenance	231	13	118	11	113	2

Source: Office of Human Resources

**Excludes temporary and second appointments

*Excludes some faculty with administrative appointments





Budget & Finance



Budget & Finance

Statement of Revenues, Expenses and Changes In Net Assets, 2003-2010

	2003	2004	2005	2006	2007	2008	2009	2010
OPERATING REVENUES								
Tuition & Fees	\$54,885,895	\$62,130,476	\$65,569,360	\$65,855,127	\$70,720,879	\$73,394,127	\$77,260,450	\$81,866,942
Less Scholarship Allowance	-12,053,890	-13,052,007	-13,688,964	-13,350,571	-14,290,197	-15,870,780	-17,226,327	-21,202,125
Net Tuition & Fees	\$42,832,005	\$49,078,469	\$51,880,396	\$52,504,556	\$56,430,682	\$57,523,347	\$60,034,123	\$60,664,817
Receipts from Other Entities	852,445	991,345	82,965	100,477	86,580	143,924	241,941	111,554
Grants and Contracts	27,838,504	29,123,374	30,743,893	29,099,979	30,862,654	32,073,018	36,708,661	42,493,448
Sales, Rents and Services	6,518,849	6,821,839	7,313,541	8,475,634	6,191,782	7,420,630	5,774,668	7,687,525
Miscellaneous	2,176,483	2,279,986	784,868	771,949	805,056	720,116	607,771	2,868,615
Auxiliary Enterprises	36,927,912	36,856,387	38,523,713	41,966,903	47,559,182	50,176,930	54,859,014	55,193,227
Total Operating Revenues	\$117,146,198	\$125,151,400	\$129,329,376	\$132,919,498	\$141,935,936	\$148,057,965	\$158,226,178	\$169,019,186
OPERATING EXPENSES								
Instruction	\$62,067,503	\$64,082,106	\$64,417,699	\$67,144,722	\$68,768,086	\$72,605,101	\$76,484,933	\$71,168,267
Research	2,512,582	2,567,947	2,518,265	1,428,193	3,232,126	2,454,770	1,793,393	2,507,353
Public Service	18,381,946	19,978,192	22,165,366	22,588,956	23,487,990	24,184,724	31,097,013	31,497,042
Academic Support	20,658,691	19,793,658	19,401,042	19,904,061	19,770,673	22,050,064	22,729,813	23,894,367
Student Services	6,067,391	6,130,096	6,459,570	5,973,711	6,277,839	6,558,084	7,076,945	6,205,098
Institutional Support	22,716,306	22,827,463	23,561,674	23,310,720	19,162,659	20,230,830	29,348,125	26,713,928
Operation and Maintenance of Plant	19,716,928	20,471,446	16,740,161	20,576,055	20,686,896	21,396,250	22,185,917	20,177,365
Scholarships and Fellowships	6,562,983	6,414,569	5,454,063	4,860,728	4,495,486	4,884,137	5,712,482	6,760,209
Depreciation	12,511,725	12,833,137	12,646,439	11,468,934	12,517,313	13,291,606	13,975,476	14,461,097
Loan Cancellations and Write-offs	484,390	479,002	471,002	276,642	278,590	251,886	513,815	172,245
Auxiliary Enterprises	34,275,029	36,486,127	38,219,649	41,065,873	43,779,370	49,043,443	50,077,862	48,447,239
Total Operating Expenses	\$205,955,474	\$212,063,743	\$212,054,930	\$218,598,595	\$222,457,028	\$236,950,895	\$260,995,774	\$252,004,210
Operating (Loss)	(88,809,276)	(86,912,343)	(82,725,554)	(85,679,097)	(80,521,092)	(88,892,930)	(102,769,596)	(82,985,024)



Statement of Revenues, Expenses and Changes In Net Assets, 2003-2010* (Continued)



	2003	2004	2005	2006	2007	2008	2009	2010
NON-OPERATING REVENUES (EXPENSES)								
State Appropriations	\$83,106,612	\$79,256,054	\$79,128,080	\$83,585,131	86,531,082	\$95,363,638	\$101,686,218	\$97,861,782
Investment Return	2,791,518	1,666,942	2,152,908	2,694,287	5,246,906	1,687,404	-611,282	2,990,195
Gifts, Grants and Contracts	1,492,118	2,212,714	2,385,758	2,432,621	2,954,052	2,600,605	3,384,744	3,332,794
Interest Expense	-5,179,863	-5,179,283	-5,140,767	-5,009,671	-5,014,486	-5,765,266	-5,742,508	-6,274,646
Loss on Disposal of Capital Assets	-	-	-	-3,001,533	-	-	-	-
Principal Demutualization	-	-	-	-	-	-	-	-
Principal Demutualization Remitted to State	-	-	-	-	-	-	-	-
Amortization Expense	-101,239	-204,602	-65,720	-90,667	-77,102	-94,140	-101,839	-109,855
Miscellaneous Expense	-	-	-	-2,704	-114,674	-29,950	-22,289	-6,850
Net Non-Operating Revenue (Expenses)	\$82,109,146	\$77,751,825	\$78,460,259	\$80,607,464	\$89,525,778	\$93,762,291	\$98,593,044	\$97,793,420
(Loss) Before Other Revenues	-\$6,644,504	-\$9,958,043	-\$4,265,295	-\$5,071,633	\$9,004,686	\$4,869,361	-\$4,176,552	\$14,808,396
State Appropriations – Capital Projects	\$20,411,720	\$15,439,528	\$14,307,549	\$6,187,924	\$8,650,293	\$5,018,136	\$5,751,912	\$5,927,801
Capital Contributions and Grants	945,584	15,850,868	4,005,674	4,310,655	9,988,308	4,117,894	9,845,582	5,164,996
Casualty Reimbursement	-	-	-	3,170,000	-	0	0	0
Extraordinary Gain on Asset Impairment	-	-	-	3,804,941	-	0	0	0
Total Other Revenues	\$21,357,304	\$31,290,396	\$18,313,223	\$17,473,520	\$18,638,601	\$9,136,030	\$15,597,494	\$11,092,797
Change in Net Assets	\$14,657,174	\$22,129,878	\$14,047,928	\$12,401,887	\$27,643,287	\$14,005,391	\$11,420,942	\$25,901,193
NET ASSETS								
Total Net Assets – July 1	\$182,327,344	\$196,984,518	\$219,114,396	\$233,162,324	\$245,564,211	\$273,207,498	\$287,212,889	\$298,633,831
Total Net Assets – June 30	\$196,984,518	\$219,114,396	\$233,162,324	\$245,564,211	\$273,207,498	\$287,212,889	\$298,633,831	\$324,535,024

Source: Financial Accounting and Reporting Services

*Fiscal year runs July 1 through June 30.

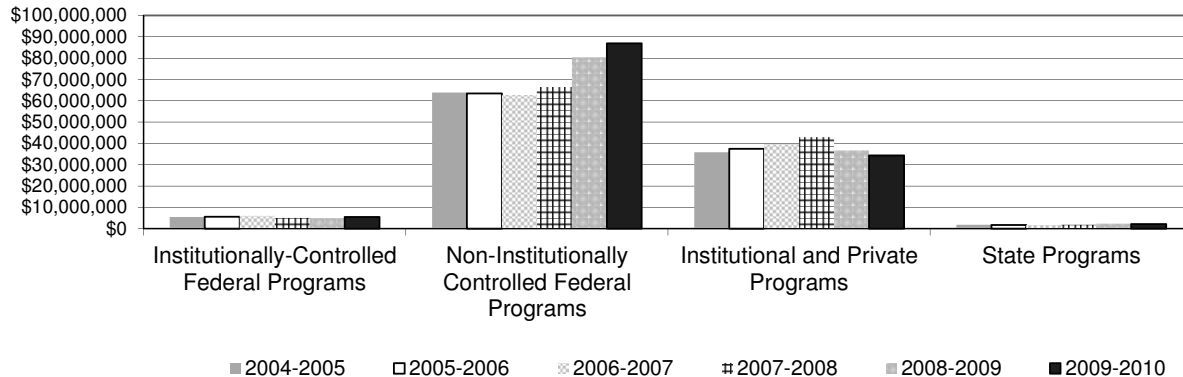
NOTE: Definition of Statement of Revenues, Expenses, and Changes In Net Assets has been changed since fiscal year 2002 in accordance with the new Governmental Accounting Standards Board (GASB) Statements No. 34 and 35.

Financial Aid Programs by Source of Aid 2005-2010

	2004-2005	2005-2006	2006-2007	2007-2008	2008-2009	2009-2010	1 Yr % Change	5 Yr % Change
TOTAL	\$106,885,448	\$108,098,431	\$110,016,744	\$116,186,986	\$124,372,381	\$128,829,476	3.6%	20.5%
Institutionally-Controlled Federal Programs	\$5,443,155	\$5,538,707	\$5,960,783	\$5,089,322	\$4,967,660	\$5,480,750	10.3%	0.7%
Non-Institutionally Controlled Federal Programs	\$63,849,517	\$63,440,923	\$62,671,914	\$66,386,640	\$80,337,778	\$86,925,180	8.2%	36.1%
Institutional and Private Programs	\$35,792,802	\$37,412,713	\$39,724,049	\$42,910,360	\$36,737,956	\$34,287,847	-6.7%	-4.2%
State Programs	\$1,799,974	\$1,706,088	\$1,659,998	\$1,800,664	\$2,328,987	\$2,135,699	-8.3%	18.7%

Source: Financial Aid Office

Source of Financial Aid
2004 through 2010



Student Financial Aid Programs 2009-2010



68

	2008-2009			2009-2010		
	Number of Awards	Value of Awards	Mean Award	Number of Awards	Value of Awards	Mean Award
TOTAL	37,136	\$124,372,381	\$3,349	38,145	\$128,829,476	\$3,377
Institutional & Private Gift Aid	9,005	\$19,085,997	\$2,119	9,702	\$19,984,057	\$2,060
Institutional Scholarships/Grants	5,607	10,422,989	\$1,859	6,968	12,017,114	\$1,725
Corporate/Private Scholarships	3,015	5,590,579	\$1,854	2,342	4,898,775	\$2,092
Athletic Scholarships	383	3,072,429	\$8,022	392	3,068,168	\$7,827
Federal & State Grants	5,535	\$13,320,398	\$2,407	6,405	\$16,776,728	\$2,619
Federal Pell Grant	2,567	7,642,360	\$2,977	3,309	10,882,051	\$3,289
Academic Competitiveness Grant	560	474,480	\$847	608	491,527	\$808
National SMART Grant	107	318,579	\$2,977	187	573,673	\$3,068
Supplemental Education Opportunity Grant	550	545,536	\$992	590	556,989	\$944
TEACH Grant	168	606,307	\$3,609	314	1,205,082	\$3,838
ROTC	17	111,631	\$6,567	8	62,471	\$7,809
Other Federal Grant/Scholarship Programs	490	1,393,872	\$2,845	439	988,018	\$2,251
All Iowa Opportunity Scholarship	87	502,028	\$5,770	55	295,792	\$5,378
IMAGES Grant	182	337,700	\$1,855	204	332,200	\$1,628
Iowa Grant	207	169,866	\$821	191	161,830	\$847
Vocational Rehabilitation	166	453,441	\$2,732	179	523,610	\$2,925
Commission for the Blind	3	10,821	\$0	2	11,163	\$5,582
Other State Grants	335	290,121	\$866	223	286,548	\$1,285
National Guard	96	463,656	\$1,855	96	405,774	\$4,227
Loans	17,396	\$80,741,386	\$4,641	17,273	\$80,608,345	\$4,667
State Loans	0	0	\$0	0	0	\$0
Federal Perkins	451	803,701	\$1,782	511	845,398	\$1,654
Direct Loans	15,751	72,515,429	\$4,604	16,118	75,876,571	\$4,708
Alternative Loans	1,194	7,422,256	\$6,216	644	3,886,376	\$6,035
Employment	5,200	\$11,224,600	\$2,159	4,765	\$11,460,346	\$2,405
Federal Work Study	515	678,925	\$1,318	512	769,415	\$1,503
Iowa Work Study	77	101,354	\$1,316	0	0	-
Graduate Teaching, Research Assistantships	380	2,320,737	\$6,107	362	2,263,481	\$6,253
UNI Employment	4,228	8,123,584	\$1,921	3,891	8,427,450	\$2,166

Source: Financial Aid Office

Full-Time Undergraduate Student Tuition and Fees 1993-2010

Academic Year	Academic Services	Activity	Athletics	Computing/ Technology	Facilities	General Student Services	Health Services	Health Facility	Surcharge	Total Mandatory Fees	UG Tuition	Total Tuition & Mandatory Fees
1993-94				\$80			\$80			\$160	\$2,192	\$2,352
1994-95				\$84			\$80			\$164	\$2,291	\$2,455
1995-96				\$88			\$84			\$172	\$2,386	\$2,558
1996-97				\$92			\$88			\$180	\$2,470	\$2,650
1997-98				\$96			\$90			\$186	\$2,566	\$2,752
1998-99				\$100			\$94			\$194	\$2,666	\$2,860
1999-00				\$104			\$98			\$202	\$2,786	\$2,988
2000-01				\$122			\$102			\$224	\$2,906	\$3,130
2001-02		\$92		\$126			\$106			\$324	\$3,116	\$3,440
2002-03		\$174		\$140			\$112			\$426	\$3,692	\$4,118
2003-04				\$150	\$180	\$102	\$116	\$26		\$574	\$4,342	\$4,916
2004-05				\$165	\$180	\$190	\$124	\$26		\$685	\$4,702	\$5,387
2005-06				\$116	\$198	\$222	\$144	\$32		\$712	\$4,890	\$5,602
2006-07				\$178	\$232	\$231	\$152	\$33	\$200	\$1,026	\$5,086	\$6,112
2007-08				\$187	\$237	\$223	\$158	\$33		\$838	\$5,352	\$6,190
2008-09				\$193	\$237	\$227	\$162	\$33		\$852	\$5,524	\$6,376
2009-10		\$35		\$200	\$235	\$215	\$166	\$29	\$100	\$980	\$5,756	\$6,736
2010-11		\$45		\$212	\$235	\$213	\$172	\$29		\$906	\$6,102	\$7,008

Source: Office of the Registrar

*All Non-College of Business Administration Resident Students



Full-Time Graduate Student Tuition and Fees 1993-2010

Academic Year	Academic Services	Activity	Athletics	Computing/ Technology	Facilities	General Student Services	Health Services	Health Facility	Surcharge	Total Mandatory Fees	Grad Tuition	Total Tuition & Mandatory Fees
1993-94				\$80			\$80			\$160	\$2,464	\$2,624
1994-95				\$84			\$80			\$164	\$2,655	\$2,819
1995-96				\$88			\$84			\$172	\$2,834	\$3,006
1996-97				\$92			\$88			\$180	\$2,932	\$3,112
1997-98				\$96			\$90			\$186	\$3,046	\$3,232
1998-99				\$100			\$94			\$194	\$3,166	\$3,360
1999-00				\$104			\$98			\$202	\$3,308	\$3,510
2000-01				\$122			\$102			\$224	\$3,452	\$3,676
2001-02		\$92		\$126			\$106			\$324	\$3,702	\$4,026
2002-03		\$174		\$140			\$112			\$426	\$4,388	\$4,814
2003-04				\$150	\$180	\$102	\$116	\$26		\$574	\$5,038	\$5,612
2004-05				\$165	\$180	\$190	\$124	\$26		\$685	\$5,488	\$6,173
2005-06				\$116	\$198	\$222	\$144	\$32		\$712	\$5,708	\$6,420
2006-07				\$178	\$232	\$231	\$152	\$33	\$200	\$1,026	\$5,936	\$6,962
2007-08				\$187	\$237	\$223	\$158	\$33		\$838	\$6,246	\$7,084
2008-09				\$193	\$237	\$227	\$162	\$33		\$852	\$6,446	\$7,298
2009-10		\$35		\$200	\$235	\$215	\$166	\$29	\$100	\$980	\$6,716	\$7,696
2010-11		\$45		\$212	\$235	\$213	\$172	\$29		\$906	\$7,120	\$8,026

Source: Office of the Registrar

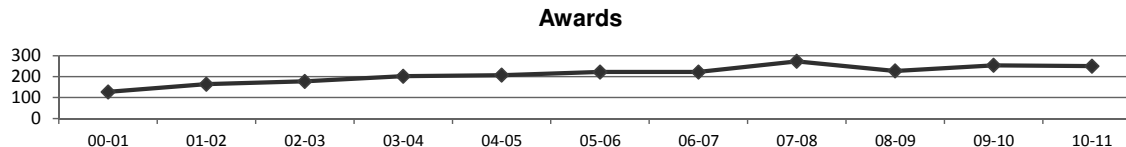
*Resident Student

Sponsored Project Proposals and Awards 2000-2010*

Fiscal Year	Proposals (P)		Awards (A)	
	N	Amount (\$)	N	Amount (\$)
2000-01	202	33,597,082	127	19,439,556
2001-02	213	31,687,716	164	23,400,612
2002-03	231	40,056,854	177	28,835,568
2003-04	288	37,183,501	202	22,226,432
2004-05	257	44,271,909	207	32,203,943
2005-06	296	47,263,423	222	33,071,632
2006-07	280	41,819,467	222	27,003,729
2007-08	352	42,777,178	273	37,101,834
2008-09	273	56,854,498	227	45,767,242
2009-10	365	53,717,963	254	39,754,021
2010-11	353	56,922,612	250	42,018,391

Source: Sponsored Programs

*Excluding Student Financial Aid, includes Amendments





Academic Departments

**Academic
Departments**

**Academic
Departments**



Academic Departments

Fall Semester Total Student Credit Hours By Department 2006-2010

	Total Student Credit Hours					% of Campus					1 Year
	2006	2007	2008	2009	2010	2006	2007	2008	2009	2010	% Change
Total Student Credit Hours	154,976	158,866	162,104	166,417	166,855						0.3
Business Administration	21,647	22,357	23,362	23,110	22,420	14	14	14	14	13	-3.0
Accounting	3,715	3,930	4,303	4,365	4,068	2	2	3	3	2	-6.8
Economics	6,209	6,087	6,241	6,141	5,988	4	4	4	4	4	-2.5
Finance	2,716	2,783	2,792	2,889	2,761	2	2	2	2	2	-4.4
Management	6,399	6,663	7,067	6,708	6,846	4	4	4	4	4	2.1
Marketing	2,608	2,894	2,959	3,007	2,757	2	2	2	2	2	-8.3
Education	29,289	29,298	29,395	32,131	31,028	19	18	18	19	19	-3.4
Curriculum and Instruction	6,171	5,861	6,044	6,440	6,672	4	4	4	4	4	3.6
Educational Leadership	1,223	1,189	1,331	2,214	911	1	1	1	1	1	-58.9
Psychology and Foundations	4,076	4,687	4,808	4,831	5,243	3	3	3	3	3	8.5
Health, Physical Education and Leisure Services	12,351	12,126	12,300	12,763	13,181	8	8	8	8	8	3.3
Special Education	1,328	1,226	1,210	1,533	1,706	1	1	1	1	1	11.3
Teaching	4,140	4,209	3,702	4,350	3,315	3	3	2	3	2	-23.8
Humanities and Fine Arts	35,514	35,095	35,541	35,861	38,070	23	22	22	22	23	6.2
Art	3,705	3,762	3,881	3,660	4,141	2	2	2	2	2	13.1
Communication Studies	7,683	7,614	8,029	8,186	8,306	5	5	5	5	5	1.5
Communication Sciences and Disorders	1,693	1,894	1,886	2,162	2,449	1	1	1	1	1	13.3
English Language and Literature	7,223	7,271	7,291	7,087	7,321	5	5	4	4	4	3.3
Modern Languages	4,359	3,833	3,731	3,535	3,685	3	2	2	2	2	4.2
School of Music	4,415	4,155	4,582	4,802	4,977	3	3	3	3	3	3.6
Philosophy and Religion	5,077	5,139	4,558	4,863	5,469	3	3	3	3	3	12.5
Theatre	1,359	1,427	1,583	1,566	1,722	1	1	1	1	1	10.0



Fall Semester Total Student Credit Hours By Department 2006-2010 (Continued)



74

	Total Student Credit Hours					% of Campus					1 Year
	2006	2007	2008	2009	2010	2006	2007	2008	2009	2010	% Change
Natural Sciences	27,382	29,627	31,077	32,028	30,727	18	19	19	19	18	-4.1
Biology	7,211	7,950	8,425	8,480	8,481	5	5	5	5	5	0.0
Chemistry and Biochemistry	3,198	3,172	3,686	3,211	3,308	2	2	2	2	2	3.0
Computer Science	1,374	1,671	1,968	2,076	2,252	1	1	1	1	1	8.5
Earth Science	2,479	2,385	2,225	2,766	2,303	2	2	1	2	1	-16.7
Industrial Technology	3,110	3,032	2,966	3,227	3,158	2	2	2	2	2	-2.1
Mathematics	8,443	9,323	10,121	9,972	9,454	5	6	6	6	6	-5.2
Physics	1,567	2,094	1,686	2,296	1,771	1	1	1	1	1	-22.9
Social and Behavioral Sciences	36,151	36,951	36,655	37,352	38,088	23	23	23	22	23	2.0
Geography	3,287	3,810	4,136	4,351	4,314	2	2	3	3	3	-0.9
History	8,334	8,378	7,597	8,793	9,115	5	5	5	5	5	3.7
Political Science	4,272	3,952	3,619	3,567	4,111	3	2	2	2	2	15.3
Psychology	7,322	7,307	7,514	7,358	6,678	5	5	5	4	4	-9.2
School of Applied Human Sciences^	4,702	4,631	5,078	4,554	5,501	3	3	3	3	3	20.8
Social Work	2,813	2,679	2,529	2,765	2,744	2	2	2	2	2	-0.8
Sociology, Anthropology and Criminology	5,421	6,194	6,182	5,964	5,625	3	4	4	4	3	-5.7
Other	4,993	5,538	6,074	5,935	6,522	3	3	4	4	4	9.9

Source: *Office of Institutional Research*

^Effective August 2010, Dept of Design, Textiles, Gerontology & Family Studies and School of Mental Health Counseling Programs (C of Ed) moved to School of Applied Human Sciences, CS&BS

Fall Semester Student Credit Hours by College and Course Level 2006-2010

College	2006		2007		2008		2009		2010	
	N	%	N	%	N	%	N	%	N	%
Total Student Credit Hours	155,281		159,111		162,342		166,417		166,855	
Undergraduate	144,370	93.0	147,847	92.9	150,188	92.5	153,609	92.3	157,028	94.1
Graduate	10,911	7.0	11,264	7.1	12,154	7.5	12,808	7.7	9,827	5.9
Business Administration	21,647		22,357		23,362		23,110		22,420	
Undergraduate	20,920	96.6	21,457	96.0	22,359	95.7	22,125	95.7	21,830	97.4
Graduate	727	3.4	900	4.0	1003	4.3	985	4.3	590	2.6
Education	29,289		29,298		29,395		32,131		31,028	
Undergraduate	26,088	89.1	26,297	89.8	26,455	90.0	28,418	88.4	28,489	91.8
Graduate	3,201	10.9	3,001	10.2	2,940	10.0	3,713	11.6	2,539	8.2
Humanities and Fine Arts	35,514		35,095		35,541		35,861		38,070	
Undergraduate	33,325	93.8	33,116	94.4	33,415	94.0	33,657	93.9	36,259	95.2
Graduate	2,189	6.2	1,979	5.6	2,126	6.0	2,204	6.1	1,811	4.8
Natural Sciences	27,578		29,751		31,223		32,028		30,727	
Undergraduate	27,046	98.1	28,794	96.8	30,313	97.1	30,882	96.4	30,159	98.2
Graduate	532	1.9	957	3.2	910	2.9	1146	3.6	568	1.8
Social and Behavioral Sciences	36,260		37,072		36,747		37,352		38,088	
Undergraduate	34,499	95.1	35,247	95.1	34,943	95.1	35,392	94.8	36,150	94.9
Graduate	1,761	4.9	1,825	4.9	1,804	4.9	1,960	5.2	1,938	5.1
Other	4,993		5,538		6,074		5,935		6,522	
Undergraduate	2,492	49.9	2,936	53.0	2,703	44.5	3,135	52.8	4,141	63.5
Graduate	2,501	50.1	2,602	47.0	3,371	55.5	2,800	47.2	2,381	36.5

Source: Office of Institutional Research



Faculty by Department and Gender 2009-2010*



76

College/Department Total Faculty	Full-Time					Part-Time					Total 2010 Faculty	1 Year % Change
	2009		2010			2009		2010			824	1.9
	F	M	F	M	Total	F	M	F	M	Total		
Total Faculty	283	348	270	353	623	96	82	118	83	201		
Business Administration	18	40	18	45	63	7	15	7	14	21	84	5.0
Accounting	3	6	3	8	11	3	3	2	4	6	17	13.3
Economics	2	9	2	10	12	0	3	0	1	1	13	-7.1
Finance	1	8	1	9	10	1	2	1	2	3	13	8.3
Management	9	10	9	11	20	3	6	4	6	10	30	7.1
Marketing	2	7	2	7	9	0	1	0	1	1	10	0.0
Other	1	0	1	0	1	0	0	0	0	0	1	0.0
Education	107	66	99	62	161	36	16	40	15	55	216	-4.0
Curriculum and Instruction	27	9	21	8	29	4	1	9	3	12	41	0.0
Educational Leadership	5	6	1	5	6	5	2	0	2	2	8	-55.6
Educational Psychology and Foundations	9	9	9	8	17	2	2	6	1	7	24	9.1
Health, Physical Education and Leisure Services	16	22	17	20	37	11	3	14	3	17	54	3.8
Special Education	9	2	9	4	13	1	2	0	1	1	14	0.0
Teaching	11	5	11	4	15	8	2	5	0	5	20	-23.1
Price Lab. School	29	13	30	12	42	5	4	6	5	11	53	3.9
Other	1	0	1	1	2	0	0	0	0	0	2	100.0
Humanities and Fine Arts	79	83	76	83	159	22	15	34	15	49	208	4.5
Art	7	10	7	10	17	3	0	2	0	2	19	-5.0
Communication Studies	20	8	20	8	28	2	4	5	3	8	36	5.9
Communicative Sciences and Disorders	6	5	5	4	9	5	0	8	0	8	17	6.3
English Language and Literature	14	18	12	16	28	5	1	10	3	13	41	7.9
Modern Languages	10	5	8	6	14	2	1	3	2	5	19	5.6
School of Music	12	23	13	24	37	4	7	6	6	12	49	6.5
Philosophy and Religion	4	8	5	8	13	0	2	0	1	1	14	0.0
Theatre	5	6	6	6	12	1	0	0	0	0	12	0.0
Other	1	0	0	1	1	0	0	0	0	0	1	0.0

Faculty by Department and Gender 2009-2010* (Continued)

College/Department	Full-Time					Part-Time					Total	1 Year
	2009		2010			2009		2010			2010	%
	F	M	F	M	Total	F	M	F	M	Total	Faculty	Change
Natural Sciences	25	83	21	87	108	19	23	14	23	37	145	-3.3
Biology	8	18	7	18	25	5	3	5	1	6	31	-8.8
Chemistry and Biochemistry	3	9	4	10	14	3	2	0	3	3	17	0.0
Computer Science	0	8	0	9	9	0	0	0	0	0	9	12.5
Earth Science	0	8	1	8	9	1	2	0	2	2	11	0.0
Industrial Technology	3	14	3	14	17	1	8	0	10	10	27	3.8
Mathematics	10	15	6	18	24	7	5	7	3	10	34	-8.1
Physics	0	9	0	9	9	1	1	1	2	3	12	9.1
Other	1	2	0	1	1	1	2	1	2	3	4	-33.3
Social and Behavioral Sciences	41	65	44	63	107	12	12	22	15	37	144	10.8
Geography	1	9	1	9	10	0	2	1	3	4	14	16.7
History	8	14	6	15	21	1	3	2	5	7	28	7.7
Political Science	4	8	5	7	12	0	3	0	3	3	15	0.0
Psychology	6	10	7	10	17	1	2	1	1	2	19	0.0
School of Applied Human Sciences^	6	4	9	4	13	6	0	9	0	9	22	37.5
Social Work	6	7	6	5	11	2	1	7	2	9	20	25.0
Sociology, Anthropology and Criminology	8	11	8	11	19	2	1	2	1	3	22	0.0
Other	2	2	2	2	4	0	0	0	0	0	4	0.0
Other	13	11	12	13	25	0	1	1	1	2	27	8.0
Library	10	7	9	7	16	0	1	0	1	1	17	-5.6
No Specific	3	4	3	6	9	0	0	1	0	1	10	42.9

Source: Office of Institutional Research

*Excludes Deans and above

^Effective August 2010, Dept of Design, Textiles, Gerontology & Family Studies and School of Mental Health Counseling Programs (C of Ed) moved to School of Applied Human Sciences, CS&BS



Faculty by Department and Rank 2007-2010



College/Department	Professor				Associate Professor				Assistant Professor				Instructor/ Lecturer				Total			
	07	08	09	10	07	08	09	10	07	08	09	10	07	08	09	10	07	08	09	10
Total Faculty	185	193	204	198	226	223	221	223	127	135	127	122	273	305	258	281	811	856	810	824
Business Administration	18	19	22	23	22	22	24	25	12	10	8	9	30	39	26	27	82	90	80	84
Accounting	2	3	4	5	5	5	4	3	4	3	2	2	4	5	5	7	15	16	15	17
Economics	4	4	5	5	6	6	6	6	1	1	0	0	2	3	3	2	13	14	14	13
Finance	4	4	4	4	2	2	3	3	1	0	1	2	5	7	4	4	12	13	12	13
Management	6	6	7	7	5	5	6	7	4	4	4	5	17	22	11	11	32	37	28	30
Marketing	2	2	2	2	3	3	4	5	2	2	1	0	2	2	3	3	9	9	10	10
Other	0	0	0	0	1	1	1	1	0	0	0	0	0	0	0	0	1	1	1	1
Education	32	37	38	33	51	49	50	45	29	30	25	26	119	131	112	112	231	247	225	216
Curriculum and Instruction	8	9	9	7	14	13	14	13	5	3	4	3	12	17	14	18	39	42	41	41
Educational Leadership	2	2	2	2	4	6	6	4	4	4	3	1	5	8	7	1	15	20	18	8
Educational Psychology and Foundations	3	4	5	3	13	12	12	10	5	5	2	4	5	5	3	7	26	26	22	24
Health, Physical Education and Leisure Services	11	13	14	13	12	12	13	14	9	10	8	7	23	25	17	20	55	60	52	54
Special Education	5	6	5	5	1	2	1	1	2	3	3	5	6	5	5	3	14	16	14	14
Teaching	1	1	1	0	3	2	2	1	2	3	3	3	19	22	20	16	25	28	26	20
Price Lab. School	1	2	2	2	3	1	1	1	1	2	2	3	49	49	46	47	54	54	51	53
Other	1	0	0	1	1	1	1	1	1	0	0	0	0	0	0	0	3	1	1	2
Humanities and Fine Arts	51	51	54	52	55	54	53	54	28	36	34	32	61	64	59	70	195	205	200	208
Art	9	9	10	9	3	2	1	1	2	2	2	4	5	8	7	5	19	21	20	19
Communication Studies	8	8	8	8	11	11	11	11	3	4	3	3	12	14	12	14	34	37	34	36
Communicative Sciences and Disorders	3	3	3	2	3	3	3	3	2	3	3	3	6	8	7	9	14	17	16	17
English Language and Literature	7	8	8	9	10	8	10	9	6	8	6	5	16	17	14	18	39	41	38	41
Modern Languages	4	3	4	4	8	9	6	8	4	4	4	2	2	3	4	5	18	19	18	19
School of Music	12	12	12	11	7	8	8	8	10	13	14	13	14	10	12	17	43	43	46	49
Philosophy and Religion	4	3	3	4	8	8	9	9	1	1	0	0	3	2	2	1	16	14	14	14
Theatre	4	4	4	4	5	5	5	5	0	1	2	2	3	2	1	1	12	12	12	12
Other	0	1	2	1	0	0	0	0	0	0	0	0	0	0	0	0	0	1	2	1

Faculty by Department and Rank 2007-2010¹ (Continued)

College/Department	Professor				Associate Professor				Assistant Professor				Instructor/ Lecturer				Total			
	07	08	09	10	07	08	09	10	07	08	09	10	07	08	09	10	07	08	09	10
Natural Sciences	46	47	51	50	41	38	32	33	29	32	32	26	33	35	35	36	149	152	150	145
Biology	11	11	12	10	10	8	7	8	6	8	8	7	7	7	7	6	34	34	34	31
Chemistry and Biochemistry	6	6	6	5	5	5	4	5	4	4	4	3	2	2	3	4	17	17	17	17
Computer Science	2	2	2	2	6	6	5	6	1	1	1	0	0	1	0	1	9	10	8	9
Earth Science	5	5	4	6	2	2	2	1	1	1	2	2	3	3	3	2	11	11	11	11
Industrial Technology	8	8	8	9	4	4	5	4	6	6	4	4	8	10	9	10	26	28	26	27
Mathematics	6	7	10	9	11	10	7	8	9	10	10	7	11	11	10	10	37	38	37	34
Physics	4	4	5	6	3	3	2	1	2	2	3	3	1	1	2	2	10	10	12	12
Other	4	4	4	3	0	0	0	0	0	0	0	0	1	0	1	1	5	4	5	4
Social and Behavioral Sciences	32	35	35	37	45	45	46	48	27	23	24	26	27	33	25	33	131	136	130	144
Geography	3	3	3	4	6	5	5	4	2	2	2	2	3	3	2	4	14	13	12	14
History	7	7	7	9	14	14	13	12	0	2	2	2	5	4	4	5	26	27	26	28
Political Science	3	3	2	2	4	4	5	5	6	3	4	5	2	6	4	3	15	16	15	15
Psychology	6	7	7	7	6	7	7	8	3	1	2	3	4	4	3	1	19	19	19	19
School of Applied Human Sciences [^]	1	2	2	2	4	2	3	5	4	5	4	5	6	8	7	10	15	17	16	22
Social Work	6	6	6	5	5	5	6	5	2	2	1	2	3	4	3	8	16	17	16	20
Sociology, Anthropology and Criminology	4	4	4	4	5	7	7	9	9	8	9	7	4	4	2	2	22	23	22	22
Other	2	3	4	4	1	1	0	0	1	0	0	0	0	0	0	0	4	4	4	4
Other	6	4	4	3	12	15	16	18	2	4	4	3	3	3	1	3	23	26	25	27
Continuing Education and Special Programs	0	0	0	0	0	0	0	0	0	0	0	0	0	0	0	0	0	0	0	0
Library	4	2	2	2	11	12	12	12	1	3	3	2	2	2	1	1	18	19	18	17
No Specific	2	2	2	1	1	3	4	6	1	1	1	1	1	1	0	2	5	7	7	10

Source: Office of Institutional Research

¹Excludes Deans and above

[^]Effective August 2010, Dept of Design, Textiles, Gerontology & Family Studies and School of Mental Health Counseling Programs (C of Ed) moved to School of Applied Human Sciences, CS&BS



Faculty by Department and Tenure Status 2007-2010



80

College/Department	Tenured				Tenure-Track				Non Tenure-Track				Total				2010 % of Department Faculty Tenure
	07	08	09	10	07	08	09	10	07	08	09	10	07	08	09	10	
Total Faculty	459	463	467	463	122	132	126	122	230	261	217	239	811	856	810	824	
Business Administration	40	41	45	46	10	9	8	11	32	40	27	27	82	90	80	84	
Accounting	7	8	8	8	3	2	1	2	5	6	6	7	15	16	15	17	47.1
Economics	10	10	11	11	1	1	0	0	2	3	3	2	13	14	14	13	84.6
Finance	6	6	6	6	1	0	2	3	5	7	4	4	12	13	12	13	46.2
Management	11	11	13	13	3	4	4	6	18	22	11	11	32	37	28	30	43.3
Marketing	5	5	6	7	2	2	1	0	2	2	3	3	9	9	10	10	70.0
Other	1	1	1	1	0	0	0	0	0	0	0	0	1	1	1	1	100.0
Education	129	134	131	119	30	32	27	27	72	81	67	70	231	247	225	216	
Curriculum and Instruction	28	30	30	27	3	1	4	2	8	11	7	12	39	42	41	41	65.9
Educational Leadership	6	8	8	6	4	3	3	1	5	9	7	1	15	20	18	8	75.0
Educational Psychology and Foundations	18	18	19	15	3	3	0	2	5	5	3	7	26	26	22	24	62.5
Health, Physical Education and Leisure Services	26	28	28	29	8	10	8	8	21	22	16	17	55	60	52	54	53.7
Special Education	6	9	7	7	2	3	3	4	6	4	4	3	14	16	14	14	50.0
Teaching	14	15	13	11	4	2	1	1	7	11	12	8	25	28	26	20	55.0
Price Lab. School	28	25	25	22	6	10	8	9	20	19	18	22	54	54	51	53	41.5
Other	3	1	1	2	0	0	0	0	0	0	0	0	3	1	1	2	100.0
Humanities and Fine Arts	107	105	108	109	27	35	33	29	61	65	59	70	195	205	200	208	
Art	12	11	11	10	3	3	3	4	4	7	6	5	19	21	20	19	52.6
Communication Studies	19	19	19	19	3	4	3	3	12	14	12	14	34	37	34	36	52.8
Communicative Sciences and Disorders	6	6	6	5	2	3	3	3	6	8	7	9	14	17	16	17	29.4
English Language and Literature	18	16	19	20	5	7	5	4	16	18	14	17	39	41	38	41	48.8
Modern Languages	12	12	10	11	4	4	4	1	2	3	4	7	18	19	18	19	57.9
School of Music	19	20	20	21	9	12	13	12	15	11	13	16	43	43	46	49	42.9
Philosophy and Religion	12	11	12	13	1	1	0	0	3	2	2	1	16	14	14	14	92.9
Theatre	9	9	9	9	0	1	2	2	3	2	1	1	12	12	12	12	75.0
Other	0	1	2	1	0	0	0	0	0	0	0	0	0	1	2	1	100.0

Faculty by Department and Tenure Status 2007-2010* (Continued)

College/Department	Tenured				Tenure-Track				Non Tenure-Track				Total				2010 % of Department Faculty Tenure
	07	08	09	10	07	08	09	10	07	08	09	10	07	08	09	10	
Natural Sciences	87	85	83	83	28	31	31	26	34	36	36	36	149	152	150	145	
Biology	21	19	19	18	6	8	8	7	7	7	7	6	34	34	34	31	58.1
Chemistry and Biochemistry	11	11	10	10	3	3	3	3	3	3	4	4	17	17	17	17	58.8
Computer Science	8	8	7	8	1	1	1	0	0	1	0	1	9	10	8	9	88.9
Earth Science	7	7	6	7	1	1	2	2	3	3	3	2	11	11	11	11	63.6
Industrial Technology	12	12	13	13	6	6	4	4	8	10	9	10	26	28	26	27	48.1
Mathematics	18	18	18	18	9	10	10	7	10	10	9	9	37	38	37	34	52.9
Physics	7	7	7	7	2	2	3	3	1	1	2	2	10	10	12	12	58.3
Other	3	3	3	2	0	0	0	0	2	1	2	2	5	4	5	4	50.0
Social and Behavioral Sciences	77	79	80	85	24	22	24	26	30	35	26	33	131	136	130	144	
Geography	9	8	8	8	1	1	2	2	4	4	2	4	14	13	12	14	57.1
History	21	21	20	21	0	2	2	2	5	4	4	5	26	27	26	28	75.0
Political Science	7	7	7	7	5	3	4	5	3	6	4	3	15	16	15	15	46.7
Psychology	12	14	14	15	3	1	2	3	4	4	3	1	19	19	19	19	78.9
School of Applied Human Sciences^	6	4	5	7	3	5	4	5	6	8	7	10	15	17	16	22	31.8
Social Work	10	10	11	10	2	2	1	2	4	5	4	8	16	17	16	20	50.0
Sociology, Anthropology and Criminology	9	11	11	13	9	8	9	7	4	4	2	2	22	23	22	22	59.1
Other	3	4	4	4	1	0	0	0	0	0	0	0	4	4	4	4	100.0
Other	19	19	20	21	3	3	3	3	1	4	2	3	23	26	25	27	
Continuing Education and Special Programs	0	0	0	0	0	0	0	0	0	0	0	0	0	0	0	0	-
Library	15	14	14	14	3	3	3	3	0	2	1	0	18	19	18	17	82.4
No Specific	4	5	6	7	0	0	0	0	1	2	1	3	5	7	7	10	70.0

Source: Office of Institutional Research

*Excludes Deans and above

^Effective August 2010, Dept of Design, Textiles, Gerontology & Family Studies and School of Mental Health Counseling Programs (C of Ed) moved to School of Applied Human Sciences, CS&BS





Colleges



Colleges

Colleges



Colleges

Business Administration - Enrollment

Fall Semester	2006	2007	2008	2009	2010	2010		
						UNiversity Total*	College	
						N	%	%
Student Enrollment	2,429	2,443	2,556	2,435	2,389	13,201		18.1
Full-Time	2,197	2,235	2,336	2,214	2,173	11,148	84.4	19.5
Part-Time	232	208	220	221	216	2,053	15.6	10.5
						13,201		
Female	978	997	1,020	947	937	7,727	58.5	12.1
Male	1,451	1,446	1,536	1,488	1,452	5,474	41.5	26.5
						13,201		
Iowa Resident	2,232	2,267	2,335	2,215	2,164	11,978	90.7	18.1
Non-Iowa Resident	95	88	96	77	71	743	5.6	9.6
International	102	88	125	143	154	480	3.6	32.1
						2,391		
As Indicated on Application: New Freshmen	381	408	431	363	367	1,978	82.7	18.6
Graduate	23	31	36	28	33	413	17.3	8.0
						11,132		
Freshman	467	484	515	435	450	2,340	21.0	19.2
Sophomore	475	440	488	456	434	2,181	19.6	19.9
Junior	658	753	704	696	687	3,037	27.3	22.6
Senior	733	682	739	763	753	3,574	32.1	21.1
						166,417		
Student Credit Hours - Undergraduate	20,920	21,457	22,359	22,125	22,125	153,609	92.3	14.4
Graduate	727	900	1,003	985	985	12,808	7.7	7.7
						13,201		
1st Majors - Undergraduate	2,333	2,359	2,446	2,350	2,324	11,391	86.3	20.4
Graduate	96	84	110	85	65	1,810	13.7	3.6
						2,908		
Degrees - Baccalaureates	575	496	477	508	534	2,347	80.7	22.8
Masters	81	46	65	78	69	561	19.3	12.3

Source: Office of Registrar

*University Total includes all enrolled students.



Business Administration - Faculty



84

Fall Semester	2006	2007	2008	2009	2010	2010		
						UNiversity Total N	%	College %
FACULTY*	79	82	90	80	84	824		10.2
Full-Time	59	58	58	58	63	623	75.6	7.6
Part-Time	20	24	32	22	21	201	24.4	2.5
Female	21	21	29	25	25	388	47.1	3.0
Male	58	58	61	55	59	436	52.9	7.2
Tenured	45	40	41	45	46	463	56.2	5.6
Tenure-Track	10	10	9	8	11	122	14.8	1.3
Non Tenure-Track	24	32	40	27	27	239	29.0	3.3
Professors	21	18	19	22	23	198	24.0	2.8
Associate Professors	22	22	22	24	25	223	27.1	3.0
Assistant Professors	13	12	10	8	9	122	14.8	1.1
Instructors/Lecturers	23	30	39	26	27	281	34.1	3.3
DEPARTMENT								Dept. %
Accounting	15	15	16	15	17			20.2
Economics	13	13	14	14	13			15.5
Finance	11	12	13	12	13			15.5
Management	29	32	37	28	30			35.7
Marketing	11	9	9	10	10			11.9
Other	0	1	1	1	1			1.2

Source: Office of Institutional Research

*Excludes Deans and above

Education - Enrollment

Fall Semester	2006	2007	2008	2009	2010	2010		
						UNiversity Total* N	%	College %
Student Enrollment	2,722	2,788	2,755	2,963	2,945	13,201		22.3
						13,201		
Full-Time	2,177	2,177	2,165	2,354	2,405	11,148	84.4	21.6
Part-Time	545	611	590	609	540	2,053	15.6	26.3
						13,201		
Female	2,048	2,082	2,057	2,200	2,161	7,727	58.5	28.0
Male	674	706	698	763	784	5,474	41.5	14.3
						13,201		
Iowa Resident	2,521	2,575	2,546	2,760	2,750	11,978	90.7	23.0
Non-Iowa Resident	153	167	171	174	166	743	5.6	22.3
International	48	46	38	29	29	480	3.6	6.0
						2,391		
As Indicated on Application: New Freshmen	279	304	337	334	355	1,978	82.7	17.9
Graduate	151	113	115	144	115	413	17.3	27.8
						11,132		
Freshman	346	390	405	409	403	2,340	21.0	17.2
Sophomore	364	348	373	444	446	2,181	19.6	20.4
Junior	551	558	492	622	652	3,037	27.3	21.5
Senior	795	797	815	821	880	3,574	32.1	24.6
						166,417		
Student Credit Hours - Undergraduate	26,088	26,297	26,455	28,418	28,418	153,609	92.3	18.5
Graduate	3,201	3,001	2,940	3,713	3,713	12,808	7.7	29.0
						13,201		
1st Majors - Undergraduate	2,056	2,093	2,085	2,296	2,381	11,391	86.3	20.9
Graduate	666	695	670	667	564	1,810	13.7	31.2
						2,908		
Degrees - Baccalaureates	533	482	444	462	488	2,347	80.7	20.8
Masters	176	197	189	162	227	561	19.3	40.5
Specialists	7	10	9	6	6	6	0.2	100.0
Doctorates	15	8	15	9	18	20	0.7	90.0

Source: Office of Registrar

*University Total includes all enrolled students.



Education - Faculty



86

Fall Semester	2006	2007	2008	2009	2010	2010		
						UNiversity Total N	%	College %
FACULTY*	232	231	247	225	216	824		26.2
Full-Time	179	174	182	173	161	623	75.6	19.5
Part-Time	53	57	65	52	55	201	24.4	6.7
Female	140	151	158	143	139	388	47.1	16.9
Male	92	80	89	82	77	436	52.9	9.3
Tenured	126	129	134	131	119	463	56.2	14.4
Tenure-Track	31	30	32	28	27	122	14.8	3.3
Non Tenure-Track	75	72	81	66	70	239	29.0	8.5
Professors	36	32	37	38	33	198	24.0	4.0
Associate Professors	46	51	49	50	45	223	27.1	5.5
Assistant Professors	33	29	30	25	26	122	14.8	3.2
Instructors/Lecturers	117	119	131	112	112	281	34.1	13.6
DEPARTMENT								Dept. %
Curriculum and Instruction	42	39	42	41	41			19.0
Educational Leadership	14	15	20	18	8			3.7
Educational Psychology and Foundations	25	26	26	22	24			11.1
Services	56	55	60	52	54			25.0
Special Education	15	14	16	14	14			6.5
Teaching	30	25	28	26	20			9.3
Price Lab. School	50	54	54	51	53			24.5
Other	0	3	1	1	2			0.9

Source: Office of Institutional Research

*Excludes Deans and above

Humanities and Fine Arts - Enrollment

Fall Semester	2006	2007	2008	2009	2010	2010		
						UNiversity Total*	College	
						N	%	%
Student Enrollment	2,112	2,060	2,068	2,150	2,196	13,201		16.6
						13,201		
Full-Time	1,916	1,881	1,874	1,950	1,993	11,148	84.4	17.9
Part-Time	196	179	194	200	203	2,053	15.6	9.9
						13,201		
Female	1,410	1,397	1,431	1,493	1,497	7,727	58.5	19.4
Male	702	663	637	657	699	5,474	41.5	12.8
						13,201		
Iowa Resident	1,895	1,870	1,869	1,971	2,017	11,978	90.7	16.8
Non-Iowa Resident	147	139	149	130	134	743	5.6	18.0
International	70	51	50	49	45	480	3.6	9.4
						2,391		
As Indicated on Application: New Freshmen	298	263	295	322	306	1,978	82.7	15.5
Graduate	70	75	75	74	93	413	17.3	22.5
						11,132		
Freshman	384	354	370	375	359	2,340	21.0	15.3
Sophomore	321	361	367	361	392	2,181	19.6	18.0
Junior	536	464	474	514	499	3,037	27.3	16.4
Senior	619	637	604	626	643	3,574	32.1	18.0
						166,417		
Student Credit Hours - Undergraduate	33,325	33,283	33,415	33,657	33,657	153,609	92.3	21.9
Graduate	2,189	2,063	2,126	2,204	2,204	12,808	7.7	17.2
						13,201		
1st Majors - Undergraduate	1,860	1,816	1,815	1,876	1,893	11,391	86.3	16.6
Graduate	252	244	253	274	303	1,810	13.7	16.7
						2,908		
Degrees - Baccalaureates	401	413	423	376	429	2,347	80.7	18.3
Masters	129	124	109	107	109	561	19.3	19.4

Source: Office of Registrar

*University Total includes all enrolled students.



Humanities and Fine Arts - Faculty



88

Fall Semester	2006	2007	2008	2009	2010	2010		
						UNiversity Total N	%	College %
FACULTY*	206	195	205	200	208	824		25.2
Full-Time	153	149	155	163	159	623	75.6	19.3
Part-Time	53	46	50	37	49	201	24.4	5.9
Female	96	94	104	101	110	388	47.1	13.3
Male	110	101	101	99	98	436	52.9	11.9
Tenured	111	107	105	108	109	463	56.2	13.2
Tenure-Track	26	27	35	33	29	122	14.8	3.5
Non Tenure-Track	69	61	65	59	70	239	29.0	8.5
Professors	53	51	51	54	52	198	24.0	6.3
Associate Professors	57	55	54	53	54	223	27.1	6.6
Assistant Professors	27	28	36	34	32	122	14.8	3.9
Instructors/Lecturers	69	61	64	59	70	281	34.1	8.5
DEPARTMENT								Dept. %
Art	22	19	21	20	19			9.1
Communication Studies	33	34	37	34	36			17.3
Communicative Sciences and Disorders	12	14	17	16	17			8.2
English Language and Literature	39	39	41	38	41			19.7
Modern Languages	20	18	19	18	19			9.1
School of Music	52	43	43	46	49			23.6
Philosophy and Religion	15	16	14	14	14			6.7
Theatre	13	12	12	12	12			5.8
Other	0	0	1	2	1			0.5

Source: Office of Institutional Research

*Excludes Deans and above

Natural Sciences - Enrollment

Fall Semester	2006	2007	2008	2009	2010	2010		
						UNiversity Total* N	%	College %
Student Enrollment	1,658	1,795	1,866	2,009	1,983	13,201		15.0
						13,201		
Full-Time	1,425	1,558	1,595	1,751	1,734	11,148	84.4	15.6
Part-Time	233	237	271	258	249	2,053	15.6	12.1
						13,201		
Female	632	714	712	771	760	7,727	58.5	9.8
Male	1,025	1,081	1,154	1,238	1,223	5,474	41.5	22.3
						13,201		
Iowa Resident	1,514	1,610	1,690	1,798	1,784	11,978	90.7	14.9
Non-Iowa Resident	76	73	68	87	86	743	5.6	11.6
International	68	112	108	124	113	480	3.6	23.5
						2,391		
As Indicated on Application: New Freshmen	245	308	300	327	281	1,978	82.7	14.2
Graduate	26	45	45	49	36	413	17.3	8.7
						11,132		
Freshman	330	403	389	407	346	2,340	21.0	14.8
Sophomore	288	293	367	392	373	2,181	19.6	17.1
Junior	424	407	427	492	516	3,037	27.3	17.0
Senior	509	543	519	527	570	3,574	32.1	15.9
						166,417		
Student Credit Hours - Undergraduate	27,046	28,794	30,313	30,882	30,882	153,609	92.3	20.1
Graduate	532	957	910	1,146	1,146	12,808	7.7	8.9
						13,201		
1st Majors - Undergraduate	1,551	1,646	1,702	1,818	1,805	11,391	86.3	15.8
Graduate	107	149	164	191	178	1,810	13.7	9.8
						2,908		
Degrees - Baccalaureates	319	296	304	335	345	2,347	80.7	14.7
Masters	40	36	42	57	59	561	19.3	10.5
Doctorates	3	0	1	1	2	20	0.7	10.0

Source: Office of Registrar

*University Total includes all enrolled students.



Natural Sciences - Faculty



90

Fall Semester	2006	2007	2008	2009	2010	2010		
						UNiversity N	%	College %
FACULTY*	142	149	152	150	145	824		17.6
Full-Time	114	116	115	108	108	623	75.6	13.1
Part-Time	28	33	37	42	37	201	24.4	4.5
Female	43	42	43	44	35	388	47.1	4.2
Male	99	107	109	106	110	436	52.9	13.3
Tenured	84	87	85	83	83	463	56.2	10.1
Tenure-Track	30	28	31	31	26	122	14.8	3.2
Non Tenure-Track	28	34	36	36	36	239	29.0	4.4
Professors	46	46	47	51	50	198	24.0	6.1
Associate Professors	38	41	38	32	33	223	27.1	4.0
Assistant Professors	32	29	32	32	26	122	14.8	3.2
Instructors/Lecturers	26	33	35	35	36	281	34.1	4.4
DEPARTMENT								Dept. %
Biology	35	34	34	34	31			21.4
Chemistry and Biochemistry	17	17	17	17	17			11.7
Computer Science	10	9	10	8	9			6.2
Earth Science	12	11	11	11	11			7.6
Industrial Technology	26	26	28	26	27			18.6
Mathematics	32	37	38	37	34			23.4
Physics	10	10	10	12	12			8.3
Other	0	5	4	5	4			2.8

Source: Office of Institutional Research

*Excludes Deans and above

Social and Behavioral Sciences - Enrollment

Fall Semester	2006	2007	2008	2009	2010	2010		
						UNiversity Total*	College	
						N	%	%
Student Enrollment	1,950	1,936	1,933	1,995	2,145	13,201		16.2
						13,201		
Full-Time	1,791	1,772	1,746	1,829	1,899	11,148	84.4	17.0
Part-Time	159	164	187	166	246	2,053	15.6	12.0
						13,201		
Female	1,201	1,155	1,178	1,212	1,302	7,727	58.5	16.9
Male	749	781	755	783	843	5,474	41.5	15.4
						13,201		
Iowa Resident	1,827	1,809	1,796	1,868	2,010	11,978	90.7	16.8
Non-Iowa Resident	98	104	113	109	109	743	5.6	14.7
International	25	23	24	18	26	480	3.6	5.4
						2,391		
As Indicated on Application: New Freshmen	245	218	219	225	230	1,978	82.7	11.6
Graduate	48	62	53	65	71	413	17.3	17.2
						11,132		
Freshman	323	280	291	292	287	2,340	21.0	12.3
Sophomore	295	318	303	347	355	2,181	19.6	16.3
Junior	568	554	561	550	606	3,037	27.3	20.0
Senior	607	613	595	614	615	3,574	32.1	17.2
						166,417		
Student Credit Hours - Undergraduate	34,499	35,247	34,943	35,392	35,392	153,609	92.3	23.0
Graduate	1,761	1,825	1,804	1,960	1,960	12,808	7.7	15.3
						13,201		
1st Majors - Undergraduate	1,793	1,765	1,750	1,803	1,863	11,391	86.3	16.4
Graduate	157	171	183	192	282	1,810	13.7	15.6
						2,908		
Degrees - Baccalaureates	481	470	476	479	459	2,347	80.7	19.6
Masters	59	68	69	62	92	561	19.3	16.4

Source: Office of Registrar

*University Total includes all enrolled students.



Social and Behavioral Sciences - Faculty



92

Fall Semester						2010		
	2006	2007	2008	2009	2010	UNiversity Total		College
						N	%	%
FACULTY*	133	131	136	130	144	824		17.5
Full-Time	107	107	106	106	107	623	75.6	13.0
Part-Time	26	24	30	24	37	201	24.4	4.5
Female	50	50	52	53	66	388	47.1	8.0
Male	83	81	84	77	78	436	52.9	9.5
Tenured	75	77	79	80	85	463	56.2	10.3
Tenure-Track	30	24	22	24	26	122	14.8	3.2
Non Tenure-Track	28	30	35	26	33	239	29.0	4.0
Professors	32	32	35	35	37	198	24.0	4.5
Associate Professors	45	45	45	46	48	223	27.1	5.8
Assistant Professors	30	27	23	24	26	122	14.8	3.2
Instructors/Lecturers	26	27	33	25	33	281	34.1	4.0
								Dept. %
Geography	13	14	13	12	14			9.7
History	27	26	27	26	28			19.4
Political Science	16	15	16	15	15			10.4
Psychology	21	19	19	19	19			13.2
School of Applied Human Sciences [^]	17	15	17	16	22			15.3
Social Work	15	16	17	16	20			13.9
Sociology, Anthropology and Criminology	24	22	23	22	22			15.3
Other	0	4	4	4	4			2.8

Source: Office of Institutional Research

^{*}Excludes Deans and above

[^]Effective August 2010, Dept of Design, Textiles, Gerontology & Family Studies and School of Mental Health Counseling Programs (C of Ed) moved to School of Applied Human Sciences, CS&BS



Graduate College



**University of
Northern
Iowa**

Graduate College



**University of
Northern
Iowa**

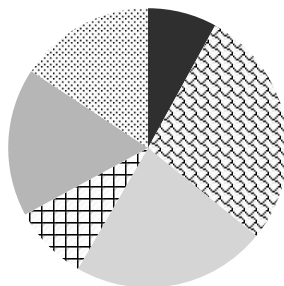
Graduate College

New Graduate Students by College: As Indicated on Application 2005-2010

	2005 N	%	2006 N	%	2007 N	%	2008 N	%	2009 N	%	2010 N	%
TOTAL	410		386		427		403		445		413	
Annual Percent Change		3.2		-5.9		10.6		-5.6		10.4		-7.2
Business Administration	32	8.3	23	5.4	31	7.7	36	8.1	28	6.8	33	8.0
Education	130	33.7	151	35.4	113	28.0	115	25.8	144	34.9	115	27.8
Humanities and Fine Arts	83	21.5	70	16.4	75	18.6	75	16.9	74	17.9	93	22.5
Natural Sciences	21	5.4	26	6.1	45	11.2	45	10.1	49	11.9	36	8.7
Social and Behavioral Sciences	66	17.1	48	11.2	62	15.4	53	11.9	65	15.7	71	17.2
No Specific College	78	20.2	68	15.9	101	25.1	79	17.8	85	20.6	65	15.7

Source: Office of the Registrar

2010



- Business Administration 8.0%
- ▤ Education 27.8%
- Humanities and Fine Arts 22.5%
- ⊕ Natural Sciences 8.7%
- ▨ Social and Behavioral Sciences 17.2%
- ⋈ No Specific College 15.7%

New Graduate Students Enrolled by College and Residence



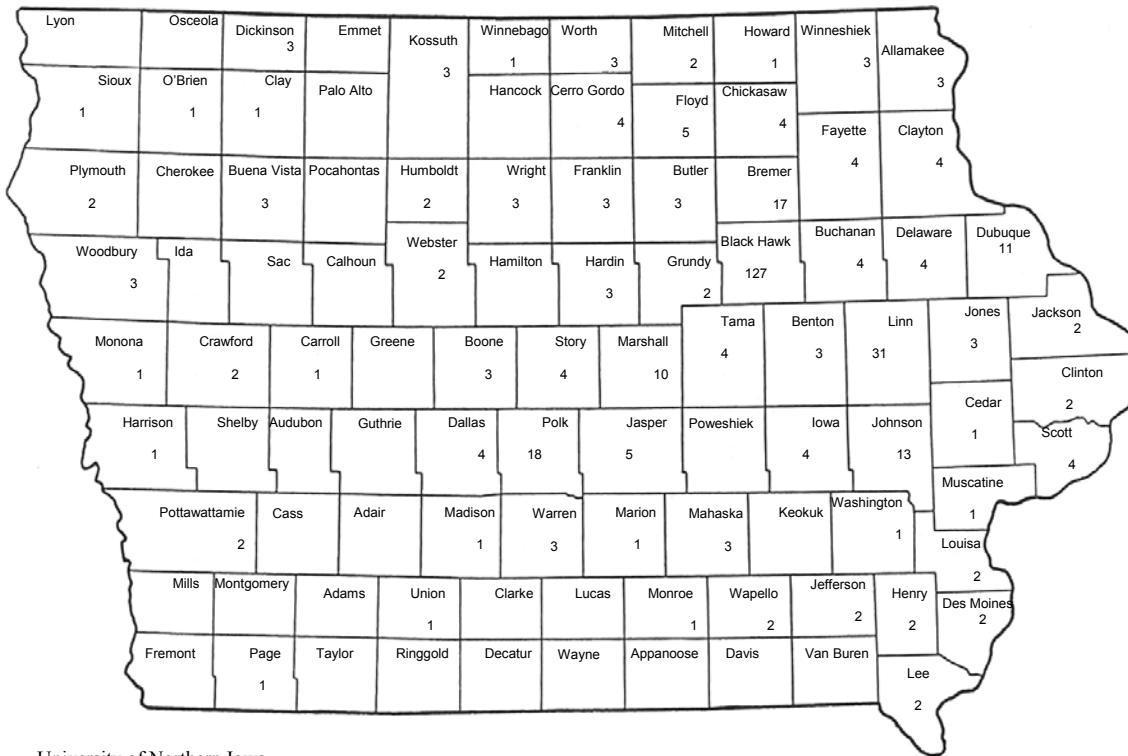
94

Graduate											1 Yr %	5 Yr %
Fall Semester	2001	2002	2003	2004	2005	2006	2007	2008	2009	2010	Change	Change
Total	425	360	373	385	410	386	427	403	445	413	-7.2	0.7
Resident	317	264	277	272	303	299	325	299	354	308	-13.0	1.7
U.S. Non-Iowa Resident	48	48	49	62	43	44	42	51	50	55	10.0	27.9
International Student	60	48	47	51	64	43	60	53	41	50	22.0	-21.9
Business Administration	60	34	24	24	32	23	31	36	28	33	17.9	3.1
Resident	47	25	19	15	22	17	23	22	20	22	10.0	0.0
U.S. Non-Iowa Resident	6	1	1	1	0	0	2	2	0	2	200.0	200.0
International Student	7	8	4	8	10	6	6	12	8	9	12.5	-10.0
Education	109	94	107	150	130	151	113	115	144	115	-20.1	-11.5
Resident	90	74	82	120	106	124	100	91	122	94	-23.0	-11.3
U.S. Non-Iowa Resident	11	17	17	17	14	17	8	17	19	13	-31.6	-7.1
International Student	8	3	8	13	10	10	5	7	3	8	166.7	-20.0
Humanities and Fine Arts	74	72	66	62	83	70	75	75	74	93	25.7	12.0
Resident	39	37	40	32	44	47	45	48	54	60	11.1	36.4
U.S. Non-Iowa Resident	12	15	11	10	13	8	15	14	15	22	46.7	69.2
International Student	23	20	15	20	26	15	15	13	5	11	120.0	-57.7
Natural Sciences	25	17	19	25	21	26	45	45	49	36	-26.5	71.4
Resident	19	7	6	12	10	18	22	27	30	24	-20.0	140.0
U.S. Non-Iowa Resident	0	2	0	9	4	2	2	5	4	3	-25.0	-25.0
International Student	6	8	13	4	7	6	21	13	15	9	-40.0	28.6
Social and Behavioral Sciences	45	43	44	58	66	48	62	53	65	71	9.2	7.6
Resident	30	30	33	31	46	35	42	41	50	53	6.0	15.2
U.S. Non-Iowa Resident	7	8	8	21	12	8	11	8	9	13	44.4	8.3
International Student	8	5	3	6	8	5	9	4	6	5	-16.7	-37.5
No Specific College	112	100	113	66	78	68	101	79	85	65	-23.5	-16.7
Resident	92	91	97	62	75	58	93	70	78	55	-29.5	-26.7
U.S. Non-Iowa Resident	12	5	12	4	0	9	4	5	3	2	-33.3	200.0
International Student	8	4	4	0	3	1	4	4	4	8	100.0	166.7

Source: Office of the Registrar

FALL 2010 ENROLLED NEW GRADUATE STUDENTS

By Admission County



University of Northern Iowa
Office of the Registrar
September 2010



Graduate Headcount by College 2001-2010



96

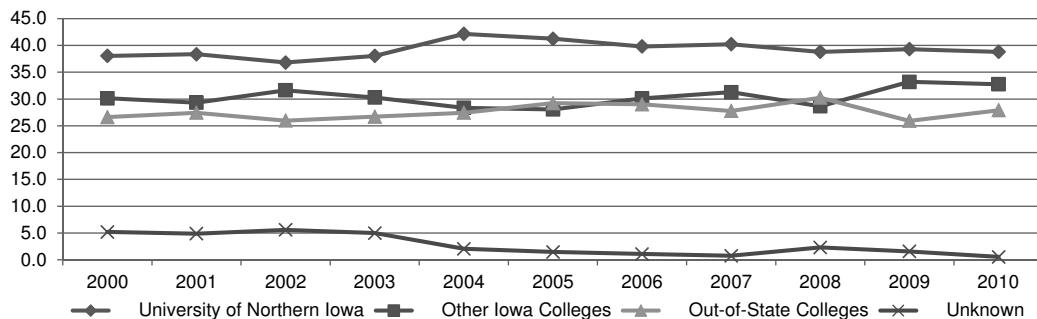
GRADUATE											1 Yr %	5 Yr %
Fall Semester											Change	Change
2001	2002	2003	2004	2005	2006	2007	2008	2009	2010			
Total	1,596	1,644	1,667	1,604	1,561	1,558	1,599	1,861	1,786	1,810	-2.7	12.8
Annual Percent Change	2.6	3.0	4.4	-3.8	-2.7	-0.2	2.6	16.4	11.7	-2.7		
Full-Time	577	550	566	678	681	690	692	731	781	770	5.3	13.6
Annual Percent Change	4.9	-4.7	-1.9	19.8	0.4	1.3	0.3	5.6	12.9	5.3		
Business Administration	37	36	43	29	43	56	57	71	62	37	-40.3	-14.0
Education	184	188	177	246	226	215	193	188	204	164	-19.6	-27.4
Humanities and Fine Arts	166	165	171	181	184	180	162	174	183	204	11.5	10.9
Natural Sciences	59	52	44	59	49	47	81	74	92	81	-12.0	65.3
Social and Behavioral Sciences	104	104	112	131	138	130	129	133	145	189	30.3	37.0
No Specific College	27	5	19	32	41	62	70	91	95	95	0.0	131.7
Part-Time	1,019	1,094	1,101	926	880	868	907	1,130	1,005	1,040	-8.0	12.3
Annual Percent Change	7.4	7.4	8.0	-15.9	-5.0	-1.4	4.5	24.6	10.8	-8.0		
Business Administration	56	65	79	57	48	40	27	39	23	28	21.7	-41.7
Education	471	483	447	469	432	451	502	482	463	400	-13.6	-7.4
Humanities and Fine Arts	93	85	99	99	77	72	82	79	91	99	8.8	28.6
Natural Sciences	79	68	71	70	66	60	68	90	99	97	-2.0	47.0
Social and Behavioral Sciences	19	25	19	23	31	27	42	50	47	93	97.9	200.0
No Specific College	301	368	386	208	226	218	186	390	282	323	14.5	42.9

Source: Office of the Registrar

Graduate Source of Enrollment 2000-2010

Fall Semester	2000	2001	2002	2003	2004	2005	2006	2007	2008	2009	2010
TOTAL	1,556	1,596	1,644	1,667	1,604	1,561	1,558	1,599	1,861	1,786	1,810
Annual Percent Change	-0.8	2.6	3.0	1.4	-3.8	-2.7	-0.2	2.6	16.4	-4.0	1.3
University of Northern Iowa	592	612	605	634	676	644	620	643	722	702	702
Other Iowa Colleges	469	468	520	505	455	438	469	500	533	593	593
Out-of-State Colleges	414	438	427	445	440	456	452	444	563	463	505
Unknown	81	78	92	83	33	23	17	12	43	28	10

Percentage of Graduate Source of Enrollment



Graduate Enrollment by Age 2000-2010											
Fall Semester	2000	2001	2002	2003	2004	2005	2006	2007	2008	2009	2010
Total Enrollment	1,556	1,596	1,644	1,667	1,604	1,561	1,558	1,599	1,861	1,786	1,810
Under 18	0	0	0	0	0	0	0	0	0	0	0
18	0	0	0	0	0	0	0	0	0	0	0
19	0	0	0	0	2	0	0	0	0	0	0
20	2	2	1	0	1	2	2	1	0	1	2
21	8	27	7	4	15	13	17	14	23	27	21
22	75	95	100	69	114	112	109	125	161	161	179
23	132	144	121	145	154	187	149	175	184	202	192
24	104	123	132	123	140	132	152	150	159	130	155
25	91	94	105	112	95	120	103	115	113	137	100
26	71	100	80	106	101	79	100	81	102	105	110
27	81	74	88	77	85	91	76	79	70	100	96
28	68	68	85	70	60	65	66	63	78	71	77
29	58	58	66	69	67	53	61	51	70	63	65
30-39	435	385	403	436	370	366	375	401	433	409	427
40-49	315	307	309	277	246	223	226	231	272	229	221
50-64	115	119	146	179	153	116	122	111	192	147	162
65 or older	1	0	1	0	1	2	0	2	4	4	3

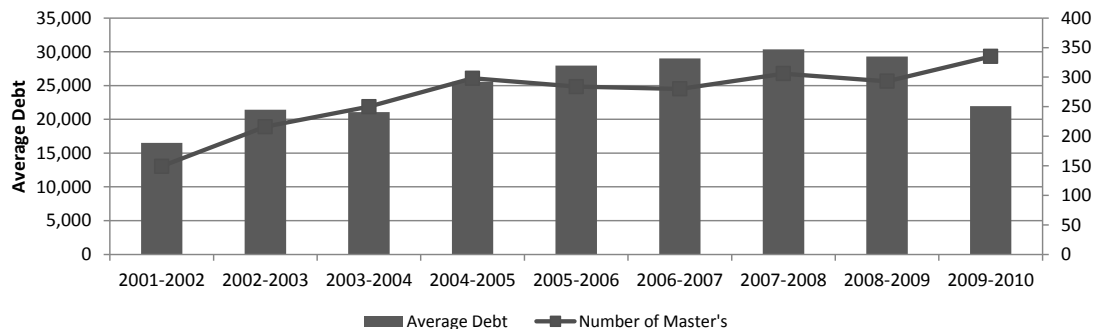
Source: *Office of the Registrar*

Average Debt Upon Graduation 2002-2010

Graduates	2001-2002		2002-2003		2003-2004		2004-2005		2005-2006		2006-2007		2007-2008		2008-2009		2009-2010	
	N	\$	N	\$	N	\$	N	\$	N	\$	N	\$	N	\$	N	\$	N	\$
Master's	149	16,517	216	21,421	250	21,058	298	25,552	284	27,974	280	29,029	306	30,369	293	29,318	335	21,944
Doctorate	-	-	-	-	1	87,799	-	-	-	-	1	39,604	1	10,625	-	-	1	43,339

Source: *Financial Aid Office*

Average Master's Debt Upon Graduation





Library

Library

Library



Library

Library Statistics: 2001 - 2010

	2001	2002	2003	2004	2005	2006	2007	2008	2009	2010
PERSONNEL – FTE										
Library Faculty	22	22	22	21	20	19	19	19	19	19
Library Associates	7	6	7	7	9	11	11	11	12	11
Library Staff	32	32	30	28	27	26	25	25	24	24
Student Assistants	32	25	21	21	21	21	20	19	19	18
HOLDINGS/ACCESS										
Bound Volumes										
Books	724,186	734,793	750,309	760,547	771,176	780,122	785,340	793,864	797,078	800,239
Periodicals	162,194	166,553	170,937	175,360	178,954	181,685	184,726	187,846	189,843	176,076
Government Documents (all)										
Paper	275,904	270,729	269,465	265,562	264,715	264,683	265,728	263,226	265,026	262,832
Microform	300,708	304,332	301,149	293,980	298,331	297,657	300,569	301,813	303,034	303,508
CD/DVD/Floppy	2,616	2,784	2,898	2,942	3,058	3,134	3,780	3,832	3,369	3,416
Subscriptions										
Periodicals (paper, w/o newspapers)	3,305	3,322	3,409	3,762	2,654	2,467	2,275	2,143	2,035	1,519
Periodicals (electronic, w/o newspapers)	-	-	-	-	1,219	1,346	1,461	1,386	1,227	1,525
Newspapers	53	50	51	48	37	35	23	28	16	15
Newspapers - electronic	-	-	-	-	-	6	5	4	4	2
Non-Periodical Continuations	3,313	3,255	2,691	2,566	2,469	2,263	2,027	1,973	1,503	1,219
Maps (sheets and folded)	40,737	40,866	40,637	40,668	40,965	41,140	41,210	41,291	41,453	41,425
Audiovisuals										
Sound recordings	14,190	13,993	14,673	15,132	15,784	15,451	15,983	16,100	16,797	17,330
Films and Videotapes	2,458	2,927	3,441	3,799	4,162	4,859	4,841	5,393	6,563	6,864
Other nonprint materials	7,303	7,194	8,844	8,934	8,968	9,113	9,671	9,711	9,663	9,583

Library Statistics: 2001 - 2010 (Continued)

	2001	2002	2003	2004	2005	2006	2007	2008	2009	2010
Microform Units (not govt. docs.)										
Microfilm	27,292	27,671	28,061	28,366	28,702	29,041	29,321	29,570	29,754	29,917
Microfiche	720,321	737,417	750,845	768,993	769,297	770,576	770,757	773,761	774,089	774,574
Microcards	11,668	11,668	12,438	15,098	17,072	17,076	17,076	17,076	17,076	17,076
Archives & Manuscripts (linear feet)	4,063	4,167	4,311	4,383	4,571	4,677	4,868	4,986	5,033	5,114
SERVICES										
Building Entrance Count	705,184	737,407	691,274	617,692	517,670	487,335	455,723	466,476	460,455	487,375
Circulation (first time loans)	231,066	239,050	237,510	217,305	184,900	169,991	166,054	166,508	166,380	161,881
Reference Transactions (all)	33,045	32,497	27,402	18,473	15,924	13,606	12,448	11,318	11,714	12,433
Interlibrary Loan										
Borrowed	9,135	8,249	7,727	6,437	5,368	5,601	5,744	5,776	5,641	5,055
Loaned	8,256	8,375	7,794	6,519	6,900	7,664	6,699	6,476	6,291	6,399
Library Instruction										
Classes	373	350	376	239	273	289	273	284	330	295
Persons served	7,727	7,746	7,347	5,716	6,067	6,704	5,616	6,020	7,465	6,128
Document Delivery										
On Campus	-	75	2,276	2,667	8,945	5,123	2,706	1,093	914	*
Off Campus	-	1,059	924	424	673	573	736	702	784	573
Electronic Journals	-	-	-	-	11,455	22,370	25,762	30,879	44,174	44,350

Source: *The Rod Library*

*Statistic No Longer Captured



General Information





General Information

International Students by Country: Fall 2010*

Country	N	Country	N	Country	N	Country	N
Australia	2	Hong Kong	14	Poland	4		
Austria	1	India	27	Portugal	1		
Bangladesh	1	Indonesia	1	Romania	1		
Belgium	1	Iran	2	Russia	23		
Brazil	11	Iraq	1	Rwanda	6		
Burma	1	Israel	1	Saudi Arabia	146		
Canada	8	Italy	1	Senegal	1		
Chile	4	Japan	13	Sierre Leone	1		
China	100	Jordan	2	Slovenia	1		
Columbia	5	Kazakhstan	3	South Korea	16		
Denmark	1	Kenya	1	Spain	3		
Dominica	1	Kyrgyzstan	1	Sri Lanka	2		
Ecuador	2	Lebanon	1	Taiwan	6		
Egypt	1	Malaysia	11	Tanzania	1		
France	3	Mali	1	Trinidad/Tobago	1		
Gambia	3	Mexico	4	Turkey	14		
Germany	1	Morocco	1	Ukraine	1		
Guatemala	1	Nepal	6	United Kingdom	4	TOTAL	480
Guernsey	1	Nigeria	4	Venezuela	1		
Guinea-Bissau	1	Peru	1	Vietnam	2	Number of Countries	60

Source: Office of the Registrar

*Includes undergraduates and graduates



International Students by College 2000-2010*

104

College	2000	2001	2002	2003	2004	2005	2006	2007	2008	2009	2010	1 Yr % Change	5 Yr % Change
TOTAL	339	355	366	384	351	422	432	472	464	453	480		13.7
Annual Percent Change		4.7	3.1	4.9	-8.6	20.2	2.4	9.3	-1.7	-2.4	6.0		
Business Administration	56	58	59	80	57	89	102	88	125	143	154	7.7	73.0
Education	47	53	47	42	55	51	48	46	38	29	29	0.0	-43.1
Humanities and Fine Arts	73	69	68	71	70	82	70	51	50	49	45	-8.2	-45.1
Natural Sciences	52	61	63	64	65	52	68	112	108	124	113	-8.9	117.3
Social and Behavioral Sciences	26	36	36	28	26	33	25	23	24	18	26	44.4	-21.2
No Specific College	85	78	93	99	78	115	119	152	119	90	113	25.6	-1.7

Source: *Office of the Registrar*

*Includes undergraduates and graduates

Top 5 Countries of Origin for International Students 2000-2010

Fall	Country	N	Country	N	Country	N	Country	N	Country	N	Total International Students
2000	Russia	42	Japan	27	PR China	21	Saudia Arabia	19	South Korea	11	339
2001	Russia	48	Japan	24	PR China	24	South Korea	19	Canada	13	355
2002	Japan	51	Russia	45	PR China	18	India	17	Taiwan	14	366
					South Korea	18					
2003	Russia	51	Japan	43	Hong Kong	28	South Korea	25	PR China	21	384
2004	Russia	50	Japan	34	India	21	Peru	16	PR China	15	351
									South Korea	15	
2005	Russia	61	Hong Kong	33	Japan	30	South Korea	26	India	23	422
					Saudi Arabia	30					
2006	Saudi Arabia	70	Russia	51	Hong Kong	37	China	28	India	23	432
2007	Saudi Arabia	72	Russia	50	China	43	India	38	Hong Kong	24	472
2008	China	82	Saudi Arabia	71	Hong Kong	45	India	37	Russia	34	464
2009	Saudi Arabia	106	China	85	India	35	Russia	26	Hong Kong	17	453
2010	Saudi Arabia	146	China	100	India	27	Russia	23	South Korea	16	480

Source: Office of the Registrar



Study Abroad Host Country or Destination: Fall 09/Spring 10/Summer 10/Fall 10*



106

Country	N	Country	N
Argentina	2	Ireland	52
Australia	11	Italy	66
Austria	7	Japan	6
Brazil	4	Mexico	13
Canada	1	Netherlands	1
Chile	23	New Zealand	6
China	25	Nicaragua	50
Costa Rica	8	Poland	11
Ecuador	1	Russia	15
England	42	Scotland	1
France	30	South Africa	9
Germany	16	South Korea	2
Greece	35	Spain	41
India	1	Wales	3
		TOTAL	482
		Number of Countries	28

Source: *Study Abroad Center and International Programs*

*Includes undergraduates and graduates

UNI Services to Businesses, Communities and Local Government

Divisions	Location	Telephone	Web Site
Center for Energy and Environmental Education	Cedar Falls, IA	319-273-2573	www.uni.edu/ceee
Executive Development Center	Cedar Falls, IA	319-273-5851	www.bcs.uni.edu/execdev
Geoinformatics Training, Research, Education and Extension	Cedar Falls, IA	319-273-3816	www.geotree.uni.edu
Heartland Economic Development Course	Cedar Falls, IA	319-273-2969	www.bcs.uni.edu/heartland
Institute for Decision Making	Cedar Falls, IA	319-273-6941	www.bcs.uni.edu/idm
Iowa Center for Immigrant Leadership and Integration	Cedar Falls, IA	319-273-3029	www.bcs.uni.edu/ICILI
Iowa Waste Reduction Center	Cedar Falls, IA	319-273-8905	www.iwrc.org
John Pappajohn Entrepreneurial Center	Cedar Falls, IA	319-273-5732	www.bcs.uni.edu/jpec
Materials Innovation Service	Cedar Falls, IA	319-273-7499	www.rttc.com
National Ag-Based Industrial Lubricants	Waverly, IA	319-352-5218	www.uni.edu/nabl
Recycling and Reuse Technology Transfer	Cedar Falls, IA	319-273-3689	www.uni.edu/rrtc
Regional Business Center	Waterloo, IA	319-236-8123	www.uni.edu/rbc
Strategic Marketing Services	Cedar Falls, IA	319-273-2886	www.sms.uni.edu
Sustainable Tourism and Environmental Program	Cedar Falls, IA	319-273-6840	www.uni.edu/step
Tallgrass Prairie Center	Cedar Falls, IA	319-273-2238	www.tallgrassprairiecenter.org
UNI Metal Casting Center	Cedar Falls, IA	319-273-6894	www.mcc.uni.edu

Source: *Business and Community Services*



UNI Carnegie Classification



108

Classification	Category
Basic	Master's L: Master's Colleges and Universities (larger programs)
Size and Setting	L4/R: Large four-year, primarily residential
Enrollment Profile	VHU: Very high undergraduate
Undergraduate Profile	FT4/S/HTI: Full-time four-year, selective, higher transfer-in
Undergraduate Instructional Program	Prof + A&S/SGC: Profession plus arts & sciences, some graduate coexistence
Graduate Instructional Program	Doc/Prof: Doctoral, professions dominant

This institution participated in the following elective classification:

Community Engagement	Curricular Engagement and Outreach and Partnerships
Level	4-year or above
Control	Public
Enrollment (Fall 2004)	12,927

Source: *The Carnegie Foundation for the Advancement of Teaching* - classification based on data from 2003 and 2004

NOTES:

Graduate program classification is based on fewer than 50 degrees.

Undergraduate program classification: the percentage is within 5 points of a category border (arts & sciences direction).

Apparent inconsistencies between basic and instructional program classifications are due to degree thresholds used in the basic classification.

Physical Facilities Inventory¹

FACILITY	Year of Construction	Gross Sq. Ft.	Net Assign Sq. Ft.
GENERAL ACADEMIC			
Begeman Hall	1906, 2008	29,722	15,040
Biology Research	1972	17,555	11,981
Business Community Service Center	2008	30,177	21,433
Center for Energy & Environmental Education	1994	29,268	14,328
Communication Arts Center	1978	54,456	29,178
Curris Business Building	1990	101,027	61,128
UNI Botanical Center	1938, 1961, 2004, 2008	20,906	13,386
Greenhouse 1	2007	2,400	2,196
Richard O Jacobson Human Performance Center	2007	31,618	22,632
Industrial Technology Center	1974, 1991, 1995	64,438	44,149
Innovative Teaching & Technology Center	1904, 1939, 2006	104,576	48,515
Kamerick Art Building	1983, 1985	76,297	53,134
Lang Hall	1900, 1953, 1960, 2001, 2007	106,668	53,479
Latham Hall	1950, 1961, 1991	50,107	29,362
McCollum Science Hall	1966-68, 2004, 2008	172,405	92,977
Performing Arts Center/School of Music	2000	125,821	53,554
Price Lab School	1953, 1955, 1957, 1995	180,521	111,108
Russell Hall	1962, 1993, 2007	73,563	40,862
Sabin Hall	1912, 1969	55,463	31,680
Schindler Education	1972-73	150,480	91,435
Seerley Hall	1907, 1964, 1993	56,243	26,502
Strayer-Wood Theatre	1978	56,209	28,661
Trailers-1/2/3/4	1998*	1,989	1,794
West Gymnasium	1923	52,868	37,914
Wright Hall	1914, 1992	42,084	21,428
Wellness/Recreation Center	1970, 1998	244,764	201,592
ACADEMIC SUBTOTAL		1,931,625	1,159,448



Physical Facilities Inventory (Continued)¹



110

FACILITY	Year of Construction	Gross Sq. Ft.	Net Assign Sq. Ft.
SUPPORT			
2401 College	1890	5,232	3,305
2401 College Garage	1935	616	520
Art #2	1932, 1948, 1951	15,470	7,976
Baker Hall	1936, 1938, 1956	90,107	49,742
Campanile	1926, 1996	1,905	1,065
Center for Educational Technology	1992*	11,293	8,513
Commons (2/3)	1933, 1966, 1995	36,449	23,316
Gilchrist Hall	1966, 1969, 2009	68,378	49,266
House #2 (Camp Adventure) 1223 W. 22nd St.	1967*	3,444	2,624
House #26 (Coll. Of Business) 8628 University Ave.	1993*	2,456	1,729
House #32 (Conf. and Visitor Cntr.) 2637 Hudson Rd.	1999*	3,202	2,505
House #33 (International Services/Individual Studies)	1906	3,987	2,636
Marshall Center School	1987*	927	857
Maucker Union	1969, 1990, 2004	120,083	74,011
McLeod Center	2007	142,465	93,132
Museum	1985*	10,404	8,362
Observatory Dome	1973	402	338
President's Garage	1933	490	422
President's House	1908	11,598	8,568
Psychology #1	1936	4,526	2,728
Rod Library	1965, 1973, 1996	236,004	174,018
Storage Building 2	2005	1,563	1,483
Student Health Center	1962, 2006	24,771	12,447
Student Services Center	1915, 1986	36,751	22,320
UNI-Dome	1976	242,721	158,713
Visitor & Information Center	1986	135	75
SUPPORT SUBTOTAL		1,075,379	710,671

Physical Facilities Inventory (Continued)¹

FACILITY	Year of Construction	Gross Sq. Ft.	Net Assign Sq. Ft.
PHYSICAL PLANT			
Cooling Tower	1975	625	375
Heckroth Storage	1987*	1,200	1,100
Landscaping Buildings	1948, 1967	2,843	2,529
Physical Plant	1967-70, 2004	40,001	34,351
Power Plant	1970, 1978, 1981, 1989	53,970	1,658
Storage Building 1	2005	976	522
Storage Building 9	2005	2,800	2,676
Storage Building 10	2008	3,200	3,050
Warehouse #1	1996*	35,629	29,182
PHYSICAL PLANT SUBTOTAL		141,244	75,443
MISCELLANEOUS			
House #21 1215 23rd St.	2004*	3,429	3,025
House #22 (Sorority) 1209 W. 23rd St.	1980*	3,041	2,684
House #24 1233 W. 22nd St.	1992*	1,850	1,312
House #25 2115 Merner	2001*	2,786	1,811
House #29 3214 Hudson Rd.	1994*	1,364	900
House #30 8712 University Ave.	1995*	3,279	1,484
House #31 2604 College St.	2002*	2,160	1,477
House #34 3204 Panther Lane	2002*	1,345	920
House #35 3104 Hudson Rd	2008*	1,604	1,155
House #36 3308 Hudson Rd	2009*	3,690	2,657
House #37 3306 Hudson Rd	2009*	200	132
Transmitter (KUNI-FM)	2009*	-	-
MISCELLANEOUS SUBTOTAL		24,748	17,557



Physical Facilities Inventory (Continued)¹



112

FACILITY	Year of Construction	Gross Sq. Ft.	Net Assign Sq. Ft.
RESIDENCE HALLS			
Bartlett Hall	1915-17, 1923-24	104,437	59,176
Bender Hall	1969	109,687	68,244
Campbell Hall	1953, 1956, 1964	132,442	90,636
Commons (1/3 - Food Service)	1933, 1966, 1995	18,279	11,693
Dancer Hall	1969	109,711	68,598
Hagemann Hall	1965	87,880	58,145
Lawther Hall	1938, 1950	107,085	66,141
Noehren Hall	1967	149,952	97,444
Redeker Center	1965-67, 2002	68,066	42,284
Rider Hall	1961	85,938	54,616
Shull Hall	1964	85,283	50,549
Towers Center	1969, 2004	58,229	33,911
RESIDENCE HALLS SUBTOTAL		1,116,989	701,437
APARTMENTS			
College Courts	1956, 1958	31,875	28,555
Hillside Courts	1972	206,247	171,893
Residence On The Hill	1993	6,799	2,894
Eiklor Hall (A)	1993	17,830	13,232
Pendergraft Hall (B)	1993	24,175	19,812
McGovern Hall (D)	1993	27,565	19,369
Holmes Hall (E)	1993	19,876	16,775
University Apartments Office	1977	7,093	3,956
Jennings Courts	1977	28,946	27,113
APARTMENT SUBTOTAL		370,406	303,599
UNIVERSITY GRAND TOTALS		4,660,391	2,968,155

Source: Office of Facilities Planning

¹Building Inventory as of July 1, 2009

^{*}Indicates year building purchased

Major Capital Projects Since Year 2000

Project	Gross Sq. Ft.	Cost	Date Opened
Gallagher-Bluedorn PAC	125,821	\$21,894,000	2000
Lang Hall Renovation	106,027	\$13,500,000	2001
Redeker Center	68,066	\$10,420,000	2001
McCollum Science Hall Addition	62,470	\$16,900,000	2004
Maucker Union Renovation/Expansion	120,083	\$13,000,000	2004
Student Health Center Renovation/Expansion	21,658	\$3,750,000	2005
Towers Dining Center	58,229	\$8,700,000	2005
East Gym -- Innovation Teaching and Technology Center	80,917	\$18,100,000	2006
McLeod Center	110,000	\$26,609,000	2006
Business & Community Services	26,662	\$5,608,000	2007
Science Buildings Renovation Physics, McCollum Science Hall, Greenhouse	50,338	\$11,100,000	2008
Russell Hall Renovation	61,687	\$9,800,000	2008
Human Performance Center	38,270	\$6,950,000	2008
Gilchrist Renovation	68,378	\$7,671,010	2009
Total	998,606	\$174,002,010	

Source: Office of Facilities Planning



Iowa Economic Impact Profile



114

Item	Details	Amount
Purchase Power	Goods and services purchased in Iowa (2009-2010)	\$15,148,978
Discretionary Spending and Tourism	13,201 current students	
	32,923 attendees at GBPAC Artist Series events (2009-2010)	
	249,430 attendees at UNI-Dome and McLeod for non sporting events (2009-2010)	
	185,800 attendees at UNI-Dome and McLeod for UNI athletic events (2009-2010)	
Provide Higher Ed	90.7% of students are from Iowa	
	UNI continues to be the largest higher education user of Iowa Communication Network (ICN) video	
	11,749 enrollment in Continuing and Distance Education Credit courses	
	21,506 individuals took advantage of non-credit offerings (some were out-of-state)	
Business Services and Community Impact	More than 4,200 business and community clients were served by UNI's Business & Community Services (FY 2009)	
	Total number Community Service hours engaged in by UNI students is 221,958 (2009-2010)	

Source: Office of University Relations



Peer Institutions

Peer Institutions



Peer Institutions



New Freshmen and Transfer Admission 2009-2010

Institution	Location	% Accepted	SAT Scores*		ACT
			Critical Reading	Math	Composite Scores
Northern Arizona University	Flagstaff, AZ	73	470-580	470-590	20 - 25
California State University	Fresno, CA	72	400 - 520	420 - 540	17 - 22
Illinois State University	Normal, IL	62	-	-	22 - 26
Indiana State University	Terre Haute, IN	68	410 - 510	420 - 520	17 - 22
University of Northern Iowa	Cedar Falls, IA	85			21 - 26
Central Michigan University	Mt. Pleasant, MI	73	440 - 560	450 - 570	20 - 25
University of Minnesota	Duluth, MN	71	-	-	20 - 26
University of North Carolina	Greensboro, NC	73	460 - 560	470 - 570	-
Ohio University	Athens, OH	82	480 - 600	490 - 600	21 - 26
University of North Texas	Denton, TX	64	480 - 590	490 - 600	20 - 25
University of Wisconsin	Eau Claire, WI	67	520 - 640	520 - 670	23 - 26

Source: *College Board*

2009-2010 Academic year

UG-Fall 2009 undergraduate enrollment

*SAT Scores represent the middle 50% of first-year students' scores.



Undergraduate Enrollment and Costs 2009-2010



116

Institution	Location	UG	Student- to- Faculty Ratio	In-State Tuition & Fees	Out-of-State Tuition & Fees
Northern Arizona University	Flagstaff, AZ	18,300	19/1	\$19,755	\$30,981
California State University	Fresno, CA	18,343	24/1	\$18,444	\$29,604
Illinois State University	Normal, IL	18,389	19/1	\$22,751	\$28,781
Indiana State University	Terre Haute, IN	8,460	18/1	\$18,722	\$27,298
University of Northern Iowa	Cedar Falls, IA	11,381	16/1	\$18,077	\$26,341
Central Michigan University	Mt. Pleasant, MI	20,581	21/1	\$20,297	\$33,797
University of Minnesota	Duluth, MN	10,506	22/1	\$21,378	\$23,378
University of North Carolina	Greensboro, NC	17,455	16/1	\$14,691	\$26,452
Ohio University	Athens, OH	18,589	19/1	\$22,905	\$31,869
University of North Texas	Denton, TX	27,468	23/1	\$17,565	\$24,213
University of Wisconsin	Eau Claire, WI	10,617	22/1	\$15,419	\$22,992

Source: *IPEDS*

UG-Fall 2009 undergraduate enrollment

The cost here refers to the total dollar amount of living on campus thus including room and board.

Graduate Enrollment and Costs: 2009-2010

Institution	Location	Graduate	In-State Tuition & Fees	Out-of-State Tuition & Fees
Northern Arizona University	Flagstaff, AZ	5,297	\$6,546	\$17,060
California State University	Fresno, CA	3,157	\$5,608	\$16,768
Illinois State University	Normal, IL	2,795	\$7,145	\$12,833
Indiana State University	Terre Haute, IN	2,074	\$8,072	\$15,680
University of Northern Iowa	Cedar Falls, IA	1,922	\$7,596	\$16,052
Central Michigan University	Mt. Pleasant, MI	6,666	\$10,416	\$18,384
University of Minnesota	Duluth, MN	1,158	\$13,535	\$20,633
University of North Carolina	Greensboro, NC	3,851	\$4,688	\$16,168
Ohio University	Athens, OH	4,058	\$9,444	\$17,436
University of North Texas	Denton, TX	7,535	\$5,396	\$10,382
University of Wisconsin	Eau Claire, WI	599	\$7,628	\$17,693

Source: *Integrated Postsecondary Education Data System (IPEDS)*

Graduate enrollment here includes all graduate and first professional students

Graduate tuition and fees do not include fees for room and board



Faculty by Rank 2009-2010



118

Institution	Location	Professor	Associate	Assistant
			Professor	Professor
Northern Arizona University	Flagstaff, AZ	259	201	195
California State University	Fresno, CA	225	134	177
Illinois State University	Normal, IL	234	264	212
Indiana State University	Terre Haute, IN	126	151	125
University of Northern Iowa	Cedar Falls, IA	157	192	121
Central Michigan University	Mt. Pleasant, MI	281	156	229
University of Minnesota	Duluth, MN	82	127	140
University of North Carolina	Greensboro, NC	187	234	149
Ohio University	Athens, OH	234	299	279
University of North Texas	Denton, TX	261	276	251
University of Wisconsin	Eau Claire, WI	125	116	115

Source: *IPEDS*

2009-2010 Academic year; full-time faculty on both 9/10 month and 11/12 month contract length

Faculty Average Salaries by Rank 2009-2010

Institution	Location	Associate Professor		Assistant Professor		Instructor	All Ranks
		Professor	Professor	Professor	Professor		
Northern Arizona University	Flagstaff, AZ	\$86,980	\$66,460	\$56,921	\$34,735		\$66,703
California State University	Fresno, CA	\$96,218	\$73,003	\$61,945	\$46,416		\$75,165
Illinois State University	Normal, IL	\$89,236	\$67,812	\$62,981	N/A		\$67,356
Indiana State University	Terre Haute, IN	\$79,131	\$61,745	\$54,467	\$36,243		\$62,043
University of Northern Iowa	Cedar Falls, IA	\$83,693	\$66,663	\$54,188	\$48,284		\$65,332
Central Michigan University	Mt. Pleasant, MI	\$95,929	\$72,614	\$58,140	\$38,073		\$71,416
University of Minnesota	Duluth, MN	\$93,058	\$74,138	\$57,126	\$49,900		\$67,645
University of North Carolina	Greensboro, NC	\$108,519	\$77,623	\$63,845	\$55,605		\$73,996
Ohio University	Athens, OH	\$97,593	\$73,744	\$57,791	\$41,507		\$71,590
University of North Texas	Denton, TX	\$107,179	\$80,952	\$66,659	\$60,950		\$78,657
University of Wisconsin	Eau Claire, WI	\$72,452	\$59,945	\$56,055	\$45,366		\$59,597

Source: *IPEDS*

2009-2010 Academic year; full-time faculty



Undergraduates Receiving Student Financial Aid: 2008-2009*

Institution	Location	Federal Grants**		State/Local Grants		Institutional Grants		Loans		Receiving Any Financial Aid
		N	\$	N	\$	N	\$	N	\$	%
Northern Arizona University	Flagstaff, AZ	1,212	5,492	166	2,116	1,886	4,514	1,560	5,383	79
California State University	Fresno, CA	2,493	5,452	1,464	2,200	1,469	3,973	698	4,101	76
Illinois State University	Normal, IL	856	5,255	758	5,560	620	4,809	1,873	6,512	68
Indiana State University	Terre Haute, IN	1,201	4,758	1,029	4,324	957	2,947	1,087	5,852	89
University of Northern Iowa	Cedar Falls, IA	801	5,326	166	4,216	1,191	2,899	1,238	5,891	88
Central Michigan University	Mt. Pleasant, MI	1,366	5,146	2,098	1,288	2,028	4,452	2,463	7,281	87
University of Minnesota	Duluth, MN	733	5,272	632	3,266	1,848	1,708	1,369	8,656	88
University of North Carolina	Greensboro, NC	1,482	4,916	1,237	4,557	898	2,449	1,199	4,888	73
Ohio University	Athens, OH	1,351	5,526	531	1,899	2,042	3,495	2,492	6,828	81
University of North Texas	Denton, TX	1,515	4,869	1,310	3,898	1,043	2,886	1,975	5,036	75
University of Wisconsin	Eau Claire, WI	587	6,301	300	2,753	238	1,548	1,000	5,293	68

Source: *Integrated Postsecondary Education Data System (IPEDS)*

*Full-time, first-time, degree/certificate-seeking undergraduate students receiving financial aid, by type of aid for Fall 2006 cohort.

\$: Average amount of aid received.

**Federal grant aid plus other federal grant aid (new in 2007-2008)

Retention and Graduation Rates Fall 2010

Institution	Location	Retention [*]	Graduation Rates ^{**}
		%	Total
Northern Arizona University	Flagstaff, AZ	72	48
California State University	Fresno, CA	80	48
Illinois State University	Normal, IL	85	65
Indiana State University	Terre Haute, IN	64	41
University of Northern Iowa	Cedar Falls, IA	82	65
Central Michigan University	Mt. Pleasant, MI	76	57
University of Minnesota	Duluth, MN	76	50
University of North Carolina	Greensboro, NC	77	50
Ohio University	Athens, OH	82	70
University of North Texas	Denton, TX	76	44
University of Wisconsin	Eau Claire, WI	86	60

Source: *Integrated Postsecondary Education Data System (IPEDS)*

^{*}Full-time retention rate, 2009-10 academic year

^{**}Graduation rates within 150% of normal time Fall 2009



Degrees Granted In Academic Year 2009-2010



122

Institution	Location	Baccalaureate	Master's	Doctorates	Total
		(Bachelor's)			
Northern Arizona University	Flagstaff, AZ	3,151	1,719	103	4,973
California State University	Fresno, CA	3,549	813	12	4,374
Illinois State University	Normal, IL	4,117	713		4,830
Indiana State University	Terre Haute, IN	1,456	492	62	2,010
University of Northern Iowa	Cedar Falls, IA	2,268	473	10	2,751
Central Michigan University	Mt. Pleasant, MI	3,571	1,990		5,561
University of Minnesota	Duluth, MN	1,783	195		1,978
University of North Carolina	Greensboro, NC	2,441	985	107	3,533
Ohio University	Athens, OH	3,917	886		4,803
University of North Texas	Denton, TX	5,728	1,528	212	7,468
University of Wisconsin	Eau Claire, WI	1,876	144		2,020

Source: Integrated Postsecondary Education Data System (IPEDS)



References



References

Quick Reference

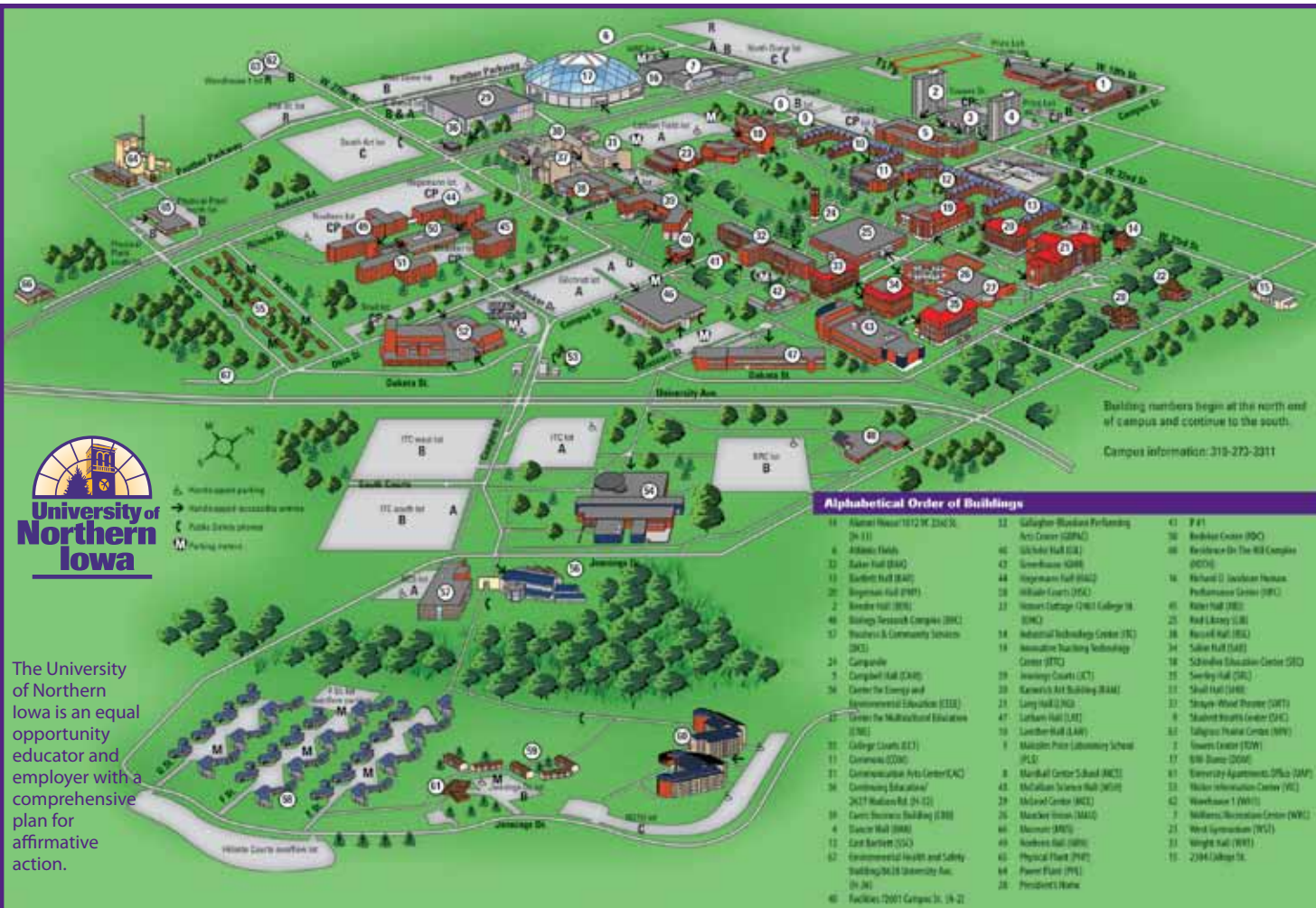
University President...	Benjamin J. Allen	Number of Financial Aid Awards	38,145
Board of Regents President	David W. Miles	Fall 2010 Employees	
University Accreditation	North Central Association of Colleges and Schools (NCA)	Full-Time	
		Faculty and Institutional Officers	603
		Professional and Scientific	532
		General Service Staff	524
Number of Colleges	5	Part-Time	
		Faculty and Institutional Officers	51
Number of Academic Departments	33	Professional and Scientific	46
		General Service Staff	55
Enrollment 2010 (Fall Headcount)		Total	1,811
Undergraduate	11,391	2010 Current Funds Revenues	\$320,412,449
Graduate	1,810		
Total	13,201	2009-10 Sponsored Funding Awarded	\$29,626,597
Enrollment 2010 (Fall FTE)		Academic Year 2010-11 Tuition and Fees	
Undergraduate	10,301	Undergraduate Resident	\$7,008.00
Graduate	1,380	Graduate Resident	\$8,026.00
Total	11,681	Undergraduate Nonresident	\$15,348.00
		Graduate Nonresident	\$16,534.00
2009-10 Degrees Awarded		Academic year 2009-10 Room & Board (19 meals/wk)	\$7,120
Baccalaureate (Bachelor's)	2,347		
Master's	561	Electronic Journals available in Librar	44,350
Specialist	6		
Doctorate	20		
Total	2,934		
Total Living Alumni (Fall 2010)	103,267	Location	Cedar Falls, IA
Student Financial Aid	\$128,829,476	Homepage Address	http://www.uni.edu
		Office of Enrollment Services Phone Number.....	800-772-2037
Residence Hall Occupancy	4,428	For an electronic version of the fact book, visit our Web site at http://www.ir.uni.edu/dbWeb/	
2008-09 Bachelor Degrees Employed	63.8%		

UNI students have over 1,000 academic study abroad programs to select from located in over 60 countries.





The University of Northern Iowa is an equal opportunity educator and employer with a comprehensive plan for affirmative action.



Building numbers begin at the north end of campus and continue to the south.

Campus information: 319-273-3311

Alphabetical Order of Buildings

14. Alumni House/1012 W. 23rd St. (H 11)	32. Gallagher Bluestone Performing Arts Center (GPAAC)	43. F&E
6. Athletics Fields	46. Gilchrist Hall (GIL)	36. Residence On The Hill Complex (OCHC)
32. Baker Hall (BAK)	47. Greenhouse (GRN)	16. Richard D. Jacobson Human Performance Center (HPC)
13. Barker Hall (BAK)	48. Hagerman Hall (HAG)	45. Rider Hall (RID)
20. Bergeson Hall (BER)	58. Hildebrandt Hall (HIL)	25. Rod Library (ROD)
2. Breder Hall (BRE)	23. Watson Cottage (2461 College St. (WAT))	38. Russell Hall (RUS)
46. Biology Research Complex (BRC)	34. Industrial Technology Center (ITC)	34. Saker Hall (SAK)
17. Business & Community Services (BSCS)	19. Innovation Teaching Technology Center (ITTC)	18. Schneider Education Center (SEC)
24. Campusville	29. Innovation Courts (ICT)	35. Seelye Hall (SEL)
1. Campbell Hall (CAM)	20. Kiewit's Art Building (KAB)	31. Shell Hall (SHE)
24. Center for Energy and Environmental Education (CEE)	27. Lang Hall (LANG)	37. Shoup-Wood Theater (SWT)
27. Center for Multicultural Education (CME)	47. Latham Hall (LAM)	9. Shoup-Wood Theater (SWT)
31. College Courts (CCS)	10. Latham Hall (LAM)	33. Sullivan Physical Center (SPC)
11. Commons (COM)	9. Malcom Price Laboratory School (MPLS)	17. Towers Center (TOW)
31. Contemporary Arts Center (CAC)	8. Marshall Center School (MCS)	17. SWB Bldg (SWB)
34. Continuing Education/2417 Madison Rd. (H 12)	43. McCallum Science Hall (MCH)	81. University Apartments/Office (UAP)
19. Davis Business Building (DBB)	39. McFarland Center (MFC)	33. Walker Information Center (WIC)
4. Decker Hall (DEK)	26. Mackay House (MAK)	42. Woodhouse 1 (WH1)
13. East Barnhart (EAC)	46. Moore Hall (MOO)	17. Wolfers Recreation Center (WRC)
62. Environmental Health and Safety Building/3618 University Ave. (H 36)	49. Norwalk Hall (NOR)	23. Wood Symposium (WSY)
46. Facilities/2001 Campus St. (H 21)	40. Physical Plant (PHY)	31. Wright Hall (WRI)
	28. President's House	15. 2394 College St.



Office of Institutional Research
University of Northern Iowa
Cedar Falls, Iowa 50614-0005

319-273-3050

