

2016

[Social Work] Newsletter, 2016

University of Northern Iowa. Department of Social Work.

Let us know how access to this document benefits you

Copyright ©2016 Department of Social Work, University of Northern Iowa

Follow this and additional works at: <https://scholarworks.uni.edu/swnews>



Part of the [Social Work Commons](#)

Recommended Citation

University of Northern Iowa. Department of Social Work., "[Social Work] Newsletter, 2016" (2016). *Social Work Newsletter*. 4.

<https://scholarworks.uni.edu/swnews/4>

This Newsletter is brought to you for free and open access by the Newsletters at UNI ScholarWorks. It has been accepted for inclusion in Social Work Newsletter by an authorized administrator of UNI ScholarWorks. For more information, please contact scholarworks@uni.edu.

Offensive Materials Statement: Materials located in UNI ScholarWorks come from a broad range of sources and time periods. Some of these materials may contain offensive stereotypes, ideas, visuals, or language.

NEWSLETTER

20
16

FROM THE
DEPARTMENT HEAD:

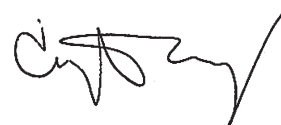
YEAR IN REVIEW

FALL 2015 - SPRING 2016

This has been an exciting and active year for students, faculty, and staff in the Department of Social Work. A highlight was the implementation of our MSW distance education program. We admitted the first Foundation cohort in January and plan to admit an Advanced Standing cohort in January 2017. The intent of the program is to reach out to Iowans whose circumstances do not provide them with the opportunity to attend on-site, campus MSW programs.

Throughout this newsletter you will see examples of efforts and achievements by our students and faculty that make our department the success that it is. Our success also depends on our alumni and agency partners. We value our on-going relationships and continue to find ways to let that be known.

As the Department Head of Social Work, I am extremely proud of all our accomplishments and activities. I cherish the news and updates we receive from alumni and friends, including hearing about any impacts you are making in the profession. We ask you to share your updates by emailing our Field Director, Jenny Becker (jennifer.becker@uni.edu), and I welcome your questions or comments at any time via email at cynthia.juby@uni.edu or by phone at 319-273-6249.

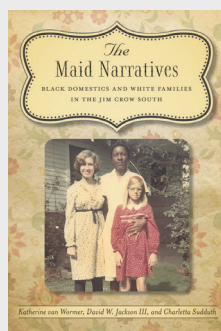


Cindy Juby, Ph.D.



DEPARTMENT OF SOCIAL WORK
University of Northern Iowa

PROFESSOR SPOTLIGHT



Katherine van Wormer

Celebrated her 25-year anniversary!

Katherine van Wormer, professor of social work, arrived to the U.S. in 1990 after living in Norway for two years doing alcoholism counseling. In 1995, she published her first book on alcoholism treatment. Including all the new editions, she has authored or co-authored 21 books on a wide range of subjects such as murder-suicide, restorative justice, confronting oppression, social work with gays and lesbians, social welfare policy and human behavior. The book she most cares about is "The Maid Narratives: Black Domestic Workers and White Families in the Jim Crow South" (LSU Press) recently released in paperback. Growing up in the 1950s in New Orleans and active in the Civil Rights movement in North Carolina, van Wormer drew on her personal knowledge of southern segregation to provide a historical background for "The Maid Narratives." To view photos from the book, see The Maid Narratives on Facebook. The book was a main source of inspiration for stories she discussed with co-author Charletta Sudduth on The Steele Report (KWWL) during Black History Month this past February, where the authors discussed women of the Great Migration who came from Mississippi to Waterloo, Iowa.

PROFESSOR HIGHLIGHTS



Laura Praglin

Received the CSBS Outstanding Service Award.



James McCullagh

Received the CSBS Outstanding Teaching Award.

- Published in The Chronicles of Oklahoma: "The Cherokee Male Seminary Baseball Team, 1876-1908."
- Published "The Road Not Taken: Discovering a World I Never Knew," in Reflections.



Steven Onken

- Facilitated The New Asylums: Mental Illness and the Criminal Justice System panel discussion.
- Council on Social Work Education Faculty Learning Collaborative on the Core Concepts of Understanding Traumatic Stress Responses.
- "Realizing Recovery: A Strengths-base Practice Framework," opening book chapter of the Francis et al 2015 text; "Social Work in Mental Health: Cross-Cultural Perspectives," New Delhi, India.
- Ongoing training and technical assistance with the IA First Judicial District and the Northeast Iowa Behavioral Health Center regarding trauma informed practices as well as a national webinar series for the SAMHSA Recovery to Practice Initiative.
- Workshops on trauma, recovery and/or personal wellbeing for IA Child Protection Centers, National Alliance on Mental Illness (NAMI), Black Hawk County and Waterloo Legal Aid Office.



James Hanson

Celebrated his 25-year anniversary!



Augustina Naami

Dr. Naami returned to her home country this spring after she was hired by the University of Ghana. She will be missed!

Received the CSBS Tenure-Track Faculty Award.

- Published "25 Years Post ADA: A Social Worker's Experience and Reflections About Environmental Barriers," in Reflections.



Ga-Young Choi

Received Tenure.

Celebrated her 5-year anniversary!

PUBLICATIONS

- Koh, E., Choi, G.-Y., & Cho, J. Y. (2016). "Effectiveness of an Ongoing, Community-Based Breast Cancer Prevention Program for Korean American Women," *Health and Social Work*, 41 (1), 51-59. doi: 10.1093/hsw/hlv086.
- Choi, G.-Y. (2016). "Secondary Traumatic Stress and Empowerment Among Social Workers Working with Family Violence or Sexual Assault Survivors," *Journal of Social Work*. doi: 10.1177/1468017316640194.

CONFERENCE PRESENTATIONS

- E-poster presentation at the Society of Social Work Research (SSWR, a national social work research conference), January 2016.
- Choi, G.-Y., Koh, E., & Cho, J.-Y. (January 2016). "Understanding Impact of Cultural Perceptions on Breast Cancer Screening Behaviors Among Korean American Women," *Society for Social Work and Research (SSWR) 2016 conference*, Washington D. C.



Anita Gordon

Research scholar, adjunct instructor of social work.

Celebrated her 10-year anniversary!

- Co-sponsor for the 2015 Conference on Ethics in Higher Education.
- 2nd year of funding for "Moral Intensity and Rational Choice as Predictors of Research Misconduct."

2015 Conference on Ethics in Higher Education at UNI

- Oral presentation - Factors Contributing to Faculty Research Misconduct
- Poster presentation - University Faculty Perceptions of Research Practices and Misconduct

American Association for the Advancement of Science in Washington, D.C.

- Poster presentation - Perceptions and Predictors of Questionable Research Practices in the Biological Sciences

Association for Practical and Professional Ethics in Washington, D.C.

- Oral presentation - Perceptions and Predictors of Questionable Research Practices in the Social Sciences
- Poster presentation - Perceptions and Predictors of Questionable Research Practices in the Biological Sciences

STAFF HIGHLIGHTS



Debra Laneville

MSW administrative assistant
Panther First Award for
Teamwork and Attitude



Ann Thill

BASW administrative assistant
Panther First Award for
Teamwork and Attitude

DEPARTMENT NEWS

UNI MSW program ranked in U.S. News & World Report's best graduate school listing (March 16, 2016)

DISTANCE EDUCATION MSW Lifelong learning. Lifelong success.

MSW's Distance Education program kicked off this past spring. Its goal is to develop the social work specialization workforce in underserved areas of Iowa with a focus on individuals who have barriers or challenges with on-campus attendance. Courses are offered through an online learning management system, with Tuesday evening classes offered via interactive video conferencing and some hands-on experiences on the UNI campus or regional face-to-face meetings. We're excited to see the talent that comes out of this great new program!

EXPLORING KOREAN EXCHANGE PROGRAMS

Department head Cindy Juby and field director Jenny Becker accompanied Philip Plourde, director of International Programs, in June to Korea to explore international internship exchanges with Kyungpook National University in Daegu and Seoul Women's University in Seoul. The opportunity came about through social work student requests for international field experience options and a recommendation from Dr. Ga-Young Choi from the social work department, who completed her undergraduate studies at Seoul Women's University. If approved, this international exchange will be a first for the department and will support student efforts at expanding their knowledge based of diversity and difference beyond the boundaries of the Cedar Valley. Dr. Juby and Jenny Becker met with the Departments of Social Welfare at both universities to discuss faculty and student exchanges. In addition, they went on three social welfare agency visits in Seoul, which included tours of the National Center for Mental Health, the Taiwha Christian Community Center and the Senior Welfare Center of Seoul to learn about their service delivery models, interventions and services.

DEPARTMENT-WIDE EVENTS



Department head Cindy Juby with Frederic Reamer, Code of Ethics: Evolution and Emerging Issues panelist, professor at the Rhode Island College School of Social Work and author of "The Social Work Ethics Case Book"

SOCIAL WORK ETHICS CONFERENCE

The social work department hosted national speaker and ethics expert Frederic G. Reamer for their fall conference in October 2015. Topics included ethical dilemmas faced by social workers and how they have evolved over time as well as ethics in the classroom, field and continuing education. This conference was made available to social work students and community social workers.



COUNCIL ON SOCIAL WORK EDUCATION NATIONAL CONFERENCE

Denver, CO - October 2015

IOWA NASW SYMPOSIUM

As a course assignment in Injustice & Oppression fall 2015 semester, a group of foundation MSW students organized and hosted a panel of Burmese refugee youths to increase community awareness about the youths' struggles adjusting to their schools and the U.S.

Students submitted an abstract based on their panel project experience and presented it at the NASW IA Symposium in Des Moines this past April.

ANNUAL AWARDS AND SCHOLARSHIPS CEREMONY



The Social Work Department's annual Awards and Scholarships Ceremony was held on Wednesday, April 27, 2016. Faculty, staff, students, university partners, community partners and family turned out to recognize the following students in accepting their awards and scholarships:

Diane H. Schaeffer Scholarship - Jonna Gutknecht

Mary L. Padovan Endowed School Social Work Scholarship - Breann Kragt and Lanna Whitlock

Robert A. Schneider Award for Excellence in Leadership - Courtney Klein

Substance Abuse Award - Colleen Borczon

Robert Runkle Endowed Scholarship in Social Work - Nicholas Rosauer and Micah Webb

Anna McCullagh Memorial Endowed Scholarship - Brittany Greig, Elizabeth Keesy and Jamie Lindstrom

Dr. James McCullagh Award for Academic Excellence - Marie Nielsen

Outstanding Graduate Research Paper Award - Anna Nelson

Outstanding Graduate Service Award - Vanessa McNeal

Community Partnership Recognitions - Allen Hospital, Family and Children's Council, Pathways Behavioral Services





2016 TRAUMA CONFERENCE: ADVANCING TRAUMA UNDERSTANDING AND RESPONSE IN 2016

The annual two-day trauma conference helps give MSW participants a better understanding of complex trauma. This year's conference focused particularly on the importance of creating a culture of collaboration and reassurance in order to safeguard against any unintentional re-traumatization and secondary trauma exposure and stress. The featured instructor was Mary Jo Barrett, MSW, the executive director and founder of The Center for Contextual Change, Ltd.

This year's co-sponsors included Orchard Place, Waterloo Community Schools Project AWARE Grant, Quakerdale, Heart & Solutions: A Strength Based Counseling Agency, County Social Services, Lutheran Services of Iowa, Cedar Valley Community Support Services and Exceptional Persons Incorporated (EPI).

IN THE FIELD

"Every job is a self-portrait of the person who did it. Autograph your work with excellence."
– Unknown

Being able to practice in the field of social work before entering the working world as a paid employee is one of the best aspects of our social work program. In fact, it is what we call our signature pedagogy. Our students experience a first-person account of what it is like to advocate for the oppressed, treat the vulnerable and help raise up those who have stumbled along the way. Whether it is through direct practice, case management, policy and program design, or advocating at the local, state or federal levels, our students graduate with a competitive advantage and skills that enable them to stand out in the workforce.

From May 2015 through May 2016, 63 undergraduate and 50 graduate social work students participated in field experiences. Our first international field experience took place during the summer of 2015 (Cory Cypher, BA graduate December 2015) with a field placement in Valencia, Spain, at the Islamic Cultural Center. This field experience was made possible through collaboration between the social work department, the UNI Study Abroad Center and World Endeavors. Our second international field experience took place this past summer of 2016 with Wendy Broich (BA graduate July 2016) going to Cape Town, South Africa to work with Yabonga, an organization that aims to enable children and youth disadvantaged through socioeconomic circumstances and the impact of HIV to reach their full potential. We continue to expand our field presence around the state through our Distance Education MSW program, which launched in the spring of 2016. The first field group starts their internships this fall, and we are reaching out to individuals and potential field sites in remote areas of the state to continue to strengthen our social work workforce.

We are fortunate to have such wonderful agency partners who provide excellent field experiences for our social work students. Currently, we have 253 sites throughout 69 Iowa communities. We recognized a couple of our local partners during our annual Scholarships and Awards Ceremony in April of 2016 for their contributions to our internship program: UnityPoint Allen Hospital, who has taken 73 students since 2000; Pathways Behavioral Services, who has taken 79 students for internships since 2000; and the Family and Children's Council, who has taken 63 students since 2000. We appreciate what they, as well as all of our partners, do for our students.

–Jenny Becker, Director of Field Instruction



AGENCY HIGHLIGHTS



Jen Alexander

MA, NCC, SB-RPT,
School Counselor, Hansen
Elementary, Cedar Falls
MSW Trauma Informed
Care Intern Feedback
(Jude Buchheit)

Devoted, understanding and compassionate are three words that describe Jen Alexander. Her knowledge about the trauma and counseling seems to have no bounds. As an intern at Hansen, I was lucky to be able to experience the ins and outs of counseling in an elementary school. My learning was enhanced and fostered with the multitude of diverse activities that Jen assigned, like providing services to a play therapy caseload, classroom lesson planning and teaching, student outreach and several other enjoyable tasks. Not only did I learn how to communicate and connect effectively with children in grades from K through 6, but I also learned first-hand what an impact true trauma-informed care can have on a student's education and life. Through play therapy, sand tray therapy, group counseling and individual counseling, I observed how Jen helped many students progress through difficult situations and learn coping skills to help them continue to positively move forward.

Jen Alexander is a practitioner that many social work students strive to become. By cultivating a fun, informative and supportive environment not only in her office but also throughout Hansen Elementary, Jen spreads the word of trauma-informed care and role models exceptional therapeutic work with students every day.



Peg DeArmond

LISW, Quakerdale,
Waterloo, IA
MSW Trauma Informed
Care Intern Feedback
(Shoshannah Harwell)

Interning at Quakerdale
has been a wonderful

experience, not only because of what I've learned in the agency but what I've learned outside the agency. Peg has done an excellent job in making sure the other intern (Darian Baker) and I are getting all the experience we possibly can. Not only are we learning things at Quakerdale, but Peg has been making sure that she connects us to other places in the area to gain experience. We have toured the Mental Health Institute in Independence, the State Training School in Eldora and the Juvenile Detention Center in Waterloo. We have also been able to follow around a therapist at Families First, a juvenile court officer in Waterloo, and have been able to sit in on some interesting court cases. Peg has stated from the beginning that Quakerdale has good things to offer us, but because of her connections, she can make our educational experience even better. Because of this, I have been able to figure out where my strengths are, where my interests are and how they all tie together. I definitely have Peg to thank for the wonderful intern experience I have received, and I feel like I'm ready for the real world of social work!



Sheri Floyd

MSW, Iowa Correctional Institution for Women
MSW Trauma Informed Care Intern Feedback (Lacey Combs)

Thanks to the help of my field instructor, Sheri Floyd, I have had many valuable experiences at ICIW. I have been assigned to facilitate multiple classes for the women at ICIW and with these classes, have mastered the ability to balance a professional role while still teaching the women lifelong skills they'll be able to use both while in the institution and when reentering society.

Overall, Sheri has helped me engage with the women of ICIW in so many ways. I have had the chance to work hands-on in a very regimented atmosphere while engaging with professionals on a level that I did not anticipate. Thanks to Sheri Floyd, I believe I have found my passion for working with women in the Department of Corrections setting, and have had the experience of a lifetime.



A SPIRITUAL AWAKENING: FROM INCARCERATION TO FULL-TIME STUDENT

Deterius Kimbrough, an undergraduate social work student, has courageously chronicled his journey from incarceration to full-time student, parent and small business owner in a video titled "A Spiritual Awakening." Kimbrough credits the Waterloo and UNI community for his success in this moving account of his experience with the criminal justice system and the perseverance needed to overcome his adversity. Kimbrough was appointed to the NAACP Youth Advisory Board and has goals of helping other youth overcome their own adversity.

Recently, he drove a truck of water to the community center in Flint, Michigan, to assist with their recovery efforts from their water crisis.



MSW FOUNDATION STUDENTS KICKOFF AMERICORPS PROGRAM

This spring semester, three MSW Foundation students started AmeriCorps positions at Big Brothers Big Sisters of Northeast Iowa in Waterloo. This experience was made possible through a collaboration between Big Brothers Big Sisters, the UNI social work department and AmeriCorps, who generously funds this job experience for the professional development of our students.

Marshall Abbe, Danielle Ballard and Vanessa McNeal have been working in their AmeriCorps positions while attending the MSW program full time. They agree that this experience has been a great integration to what they have learned in class regarding understanding cultural awareness, understanding organizational frameworks, working with communities and using interviewing skills. Furthermore, they shared it has been very rewarding in being able to positively impact a child's life by providing them with a mentor.

STUDENT HIGHLIGHTS

Trevor Dismore

Trevor graduated this past May with his Masters in Social Work. Although he went into the social work program thinking it would be the hardest year of school in his life, he was overwhelmed by how his professors helped make the program understandable, interesting and doable. He particularly enjoyed the Advanced Groups course with Peter Cote and overall felt that the social work graduate program opened his eyes to the "trauma informed world," teaching him the therapeutic skills necessary for his future profession. "At the end of the day, or end of my life, I can look back at my profession and be proud of myself because I chose a road that put others first before myself." Trevor's two-fold plan after graduation is to: 1) pass the licensing exam for his LMSW and 2) find a job as a licensed mental health therapist within the Cedar Valley or Northeast Iowa. Good luck Trevor!

Vanessa McNeal

Vanessa McNeal is a first year graduate student in the social work program. So far she has particularly enjoyed the classes she's had with Ga-Young Choi and overall likes that the program specializes in trauma informed care and focuses on developing skills that will help her in the real world. She also recently joined the MSW Student Association and stated that it has enriched her overall college experience. "I feel like I am a part of a team of people with similar interests and intentions. We all have a passion to help others, so it is awesome to be around like-minded people." After graduation, Vanessa plans to work in a school or hospital setting and will continue to work with survivors of sexual violence.



DEPARTMENT OF SOCIAL WORK
University of Northern Iowa

Sabin Hall 235
Cedar Falls, IA 50614

SNAPSHOTS

