

2005

University of Northern Iowa Fact Book, 2005-2006

University of Northern Iowa

Let us know how access to this document benefits you

Copyright ©2006 University of Northern Iowa.

Follow this and additional works at: https://scholarworks.uni.edu/ire_factbook



Part of the [Higher Education Commons](#)

Recommended Citation

University of Northern Iowa, "University of Northern Iowa Fact Book, 2005-2006" (2005). *University of Northern Iowa Fact Book*. 3.

https://scholarworks.uni.edu/ire_factbook/3

This Newsletter is brought to you for free and open access by the Institutional Effectiveness & Planning at UNI ScholarWorks. It has been accepted for inclusion in University of Northern Iowa Fact Book by an authorized administrator of UNI ScholarWorks. For more information, please contact scholarworks@uni.edu.

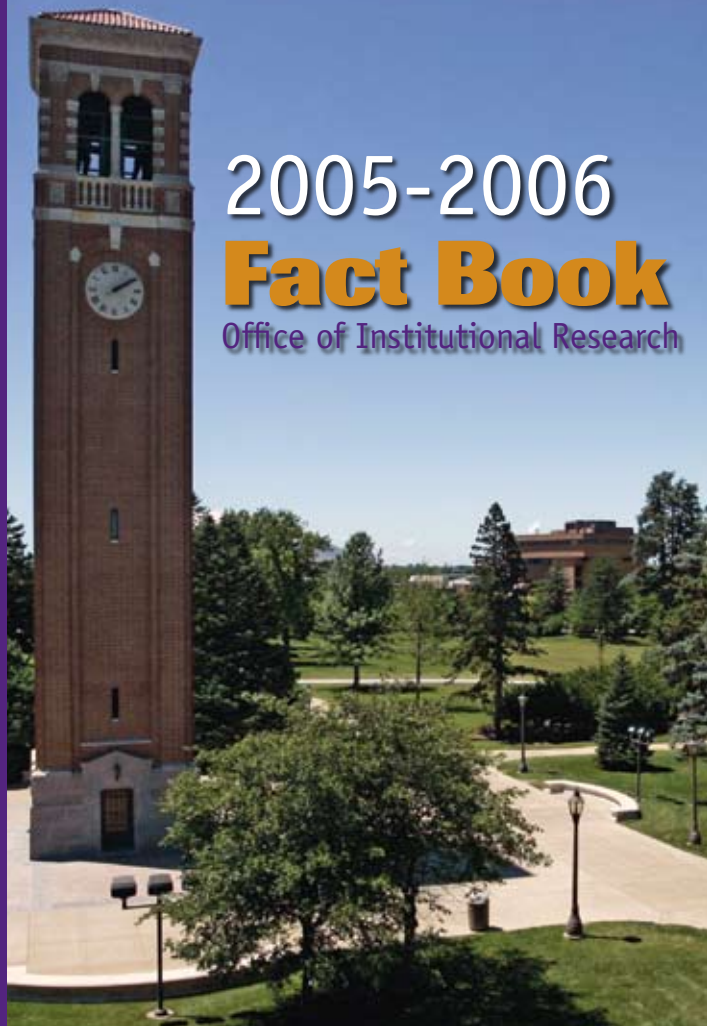
Offensive Materials Statement: Materials located in UNI ScholarWorks come from a broad range of sources and time periods. Some of these materials may contain offensive stereotypes, ideas, visuals, or language.



**University of
Northern
Iowa**

**Students
First**

The University of Northern Iowa offers a world-class university education, providing personalized experiences and creating a lifetime of opportunities.



2005-2006 **Fact Book**

Office of Institutional Research



Quick Reference

University President..... Robert D. Koob

Board of Regents President..... Michael G. Gartner

University AccreditationNorth Central Association
of Colleges and Schools (NCA)

Number of Colleges..... 5

Number of Academic Departments 31

Enrollment 2005 (Fall Headcount)

Undergraduate..... 10,952

Graduate..... 1,561

Total 12,513

Enrollment 2005 (Fall FTE)

Undergraduate..... 9,801

Graduate..... 1,215

Total 11,016

2004-05 Degrees Awarded

Baccalaureate (Bachelor's)..... 2,669

Master's 494

Specialist 3

Doctorate 10

Total 3,176

Total Living Alumni (Fall 2005) 93,683

Student Financial Aid \$104,165,681

Number of Student Financial Aid Awards 31,822

Fall 2005 Employees

Full-Time

Faculty and Institutional Officers..... 613

Professional and Scientific..... 485

General Service Staff..... 558

Part-Time

Faculty and Institutional Officers..... 26

Professional and Scientific..... 36

General Service Staff..... 58

Total 1,776

2005 Current Funds Revenues \$246,895,371

2004-05 Sponsored Funding Awarded \$24,783,909

Academic Year 2005-06 Tuition and Fees

Undergraduate Resident..... \$5,602

Graduate Resident \$6,420

Undergraduate Nonresident..... \$13,214

Graduate Nonresident..... \$14,244

Academic year 2005-06 Room & Board (19 meals/wk).. \$5,537

Location Cedar Falls, IA

Homepage Address www.uni.edu

Office of Enrollment Services Phone Number800-772-2037

For an electronic version of the fact book, visit our Web site
at www.uni.edu/instrsch



**University of
Northern
Iowa**

Fact Book

2005-2006

Office of Institutional Research

**University of Northern Iowa
Cedar Falls IA 50614-0005**

Table of Contents



Quick Reference	Inside front cover
Mission Statement	1
UNI Organizational Chart	2
UNI Administration	3
Definitions of Terms Used	4

New Students

New Student Applications, Admissions and Enrolled	7
New Students Enrolled	9
New Freshmen Enrolled by Residence	10
New Freshmen by College as Indicated on Application for Admission	11
New Freshmen ACT Composite Scores and High School Class Rank	12
New Undergraduate Transfer Students by Type of Transfer College	13

Enrollment

Student Profile by College	15
Headcount Enrollment	16
Headcount by College	18
Average Course Load: 1996 - 2004	20
Enrollment by Term	21
Fall On-Campus Headcount and FTE Enrollment by Level	22
Enrollment by Level and Gender	24
Fall 2005 Enrollment by Admission County	25
Enrollment by College, Level and Gender	26
Enrollment by Race/Ethnicity	29

Minority Student Enrollment (Fall Semester)	30
Enrollment by Age	32
Enrollment by Residence	34
International Students by Country: Fall 2005	36
Top 5 Countries of Origin for International Students	37
International Students by College	38
Majors by College and Level (First Major Only)	39
Continuing Education Credit Enrollment Trends	44
Continuing Education Courses Offered	45
Annual Degrees Awarded by Level	46
Degrees Granted by College: Years 2000 - 2005	48
2004-2005 Degrees Granted by College	50
Retention and Graduation Analysis	51
Residence Hall Occupancy by Level, Gender and Year: 2001-2005	52

Alumni

Total Living Alumni by College	53
Alumni by State	55
Post-Graduation Status of 2002-03 Bachelor's Degree Recipients	56
Post-Graduation Status of 2002-03 Graduate Degree Recipients	57
Senior Exit Survey Results: Plans for Further Education	58
Graduate Program Survey Results: Plans for Further Education	59

Table of Contents, continued

Faculty and Staff

Faculty Profile by College	61
Faculty by Tenure Status	62
Faculty by Gender and Tenure Status	63
Faculty by Rank	64
Fall 2005 Faculty by College and Gender	65
Faculty by College, Rank and Gender	68
Minority Faculty by Race/Ethnicity	71
UNI Workforce by Employment Categories	72
UNI Workforce by Race/Ethnicity	73
UNI Workforce by Employment Categories and Race/ Ethnicity	74

Library

Library Statistics: 2000-2005	75
-------------------------------------	----

Budget and Finance

Statement of Revenues, Expenses, and Changes In Net Assets, Fiscal Years 2002-2005	77
Funds, Revenues, and Expenditures, Fiscal Years 1998-2001	79
Financial Aid Programs by Source of Aid	81
Student Financial Aid Programs	82
Graduate Student Financial Aid	84
Full-Time Undergraduate Student Tuition and Fees	85
Full-Time Graduate Student Tuition and Fees	86
Sponsored Project Proposals and Awards as Reported to the Board of Regents	87

Academic Departments

Faculty by Department and Rank	89
Faculty by Department and Tenure Status	91
Fall 2005 Faculty by Department and Gender	94
Fall Semester Total Student Credit Hours	96
Fall Semester Student Credit Hours by College and Course Level	98

Peer Institutions

New Freshmen and Transfer Admission	101
Undergraduate Enrollment and Costs	102
Graduate Enrollment and Costs: 2003-2004	103
Faculty by Rank	104
Faculty Average Salaries by Rank	105
Undergraduates Receiving Student Financial Aid: 2003-04	106
Retention and Graduation Rates	107
Degrees Granted in 2003-2004	108

Campus Map	Inside back cover
------------------	-------------------





iv

**University of Northern Iowa
Fact Book: 2005-2006**

January 2006

Staff Contributors:

Pat Hart
Thulasi Kumar

Graphic and Publication Support:

University Marketing & Public Relations

Phone: 319-273-3050 Fax: 319-273-3010 E-mail: instrsch@uni.edu

Mission Statement

Institutional Mission

The University of Northern Iowa is a comprehensive institution dedicated to providing a personalized learning environment, founded on a strong liberal arts curriculum. It is committed to being an intellectually and culturally diverse community. The university focuses both on undergraduate education, and on selected master's, doctoral and other graduate programs. It is characterized by excellence in three areas: teaching and learning; research, scholarship, and creative work; and service. Through its varied endeavors, UNI shares its expertise with, and provides service to, individuals, communities and organizations throughout the state, the nation and the world.

Vision Statement

The University of Northern Iowa will be the leader among the nation's finest public comprehensive universities, characterized by a multicultural and inclusive community with high-quality teaching/ learning environments and socially responsible contributions to the state of Iowa, the nation, and the world.

Values

The University of Northern Iowa community values:

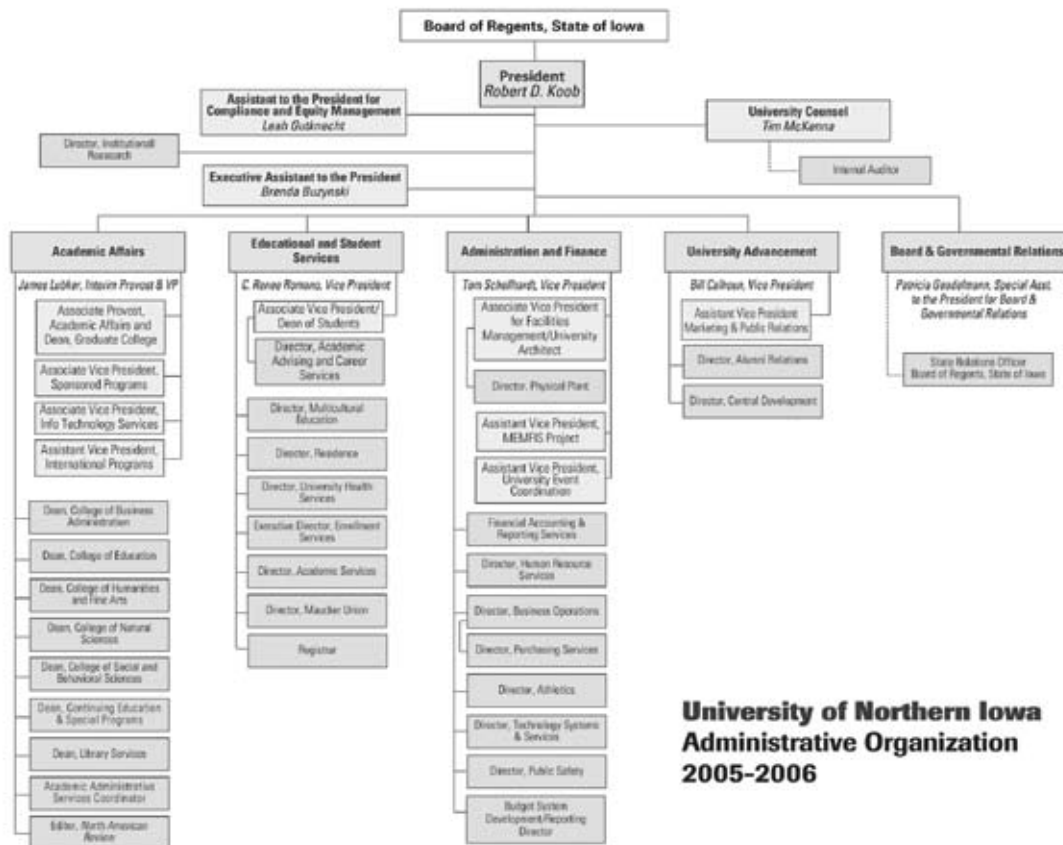
- Excellence in all its endeavors
- Intellectual vitality
- Intellectual and academic freedom, dialogue and the free exchange of ideas
- Expansive awareness of multiple perspectives characteristic of a global society
- An ethical, caring and diverse community characterized by pluralism and civility
- Personalized learning
- The well being of its students, faculty and staff
- Service to the citizens of the state of Iowa, the nation and the world
- An appreciation of people with different backgrounds with an emphasis on gender, race/ ethnicity, religion, age, sexual orientation, physical abilities, socioeconomic class, and national origin.



UNI Organizational Chart



2



**University of Northern Iowa
Administrative Organization
2005-2006**

UNI Administration

PRESIDENT..... Dr. Robert D. Koob

SPECIAL ASSISTANT to PRESIDENTDr. Patricia L. Geadelmann

PROVOST and VICE PRESIDENT..... Dr. James F. Lubker (Interim)

ASSOCIATE PROVOST, ACADEMIC AFFAIRSDr. Susan Koch

VICE PRESIDENTS/ASSOCIATE and ASSISTANT VICE PRESIDENTS

Vice President for Educational and Student ServicesDr. Renee Romano

Vice President for Administration and Finance Thomas Schellhardt

Vice President for Advancement Mr. William Calhoun

Associate Vice President for Sponsored Programs.....Dr. Jill Trainer (Interim)

Associate Vice President for Information Technology Mr. Garrett A. Bozylinsky

Assistant Vice President for International Programs..... Dr. Timothy E. O'Connor

DEANS

College of Business Administration.....Dr. Farzad Moussavi

College of Education.....Dr. Jeffrey Cornett

College of Humanities and Fine Arts.....Dr. Reinhold Bubser (Interim)

College of Natural Sciences.....Dr. Joel Haack (Interim)

College of Social and Behavioral Sciences Dr. Julia Wallace

Continuing Education and Special Programs Dr. James Bodensteiner

Graduate CollegeDr. Susan Koch

LibraryMs. Marilyn Mercado

The standard convention for UNI e-mail addresses is firstname.lastname@uni.edu



Definitions of Terms Used



ENROLLMENTS

Headcount: The count of each student enrolled for one or more courses taken in a semester following the second week of the semester's start.

Full-Time Student: An undergraduate student enrolled for 12 or more credit hours per semester and a graduate student enrolled for 9 or more credit hours per semester.

FTE (Full-Time Equivalent): An enrollment unit used to represent a student enrolled for a full course of study. It is calculated by dividing total credit hours generated by 15.0 for undergraduate students and by 9 for graduate students for a semester FTE.

Unclassified/Undeclared Student: A student who has enrolled in instructional courses but has not been officially accepted into one of the institution's authorized degree programs.

Freshman: A first-year undergraduate student.

First-Time First-Year Student: A student attending any institution for the first time at the undergraduate level. Includes students enrolled in the fall term who attended college for the first time in the prior summer term. Also includes students who entered with advanced standing (college credits earned before graduation from high school).

First-Time Student: A student attending any institution for the first time at the level enrolled. Includes students enrolled in the fall term who attended a postsecondary institution for the first time at the same level in the prior

summer term. Also includes students who entered with advanced standing (college credit earned before graduation from high school).

Graduation Rate: Rate required for disclosure and/or reporting purposes under Student Right-to-Know. Calculated as the total number of completers within 150 percent of normal time divided by the revised cohort minus any allowable exclusions.

FACULTY & STAFF

Faculty (Instruction/Research/Public Service): Persons whose specific assignments customarily are made for the purpose of conducting instruction, research, or public service as a principle activity (or activities), and who hold academic rank titles of professor, associate professor, assistant professor, instructor, lecturer or the equivalent of any of these academic ranks. This category excludes president, vice presidents and deans. Also excluded are faculty on leave without pay.

Executive, Administrative and Managerial: Persons whose assignments require primary (and major) responsibility for management of the institution, or a customarily recognized department or subdivision, thereof. Assignments require the performance of work directly related to management policies or general business operations of the institution, department or subdivision. It is assumed that assignments in this category customarily and regularly require the incumbent to exercise discretion and independent judgment, and to direct the work of others. Included in this category are all officers holding titles such as president, vice president, dean, director or

the equivalent, as well as officers subordinate to any of these administrators with such titles as associate dean, assistant dean, executive officer of academic departments (department heads, or the equivalent) if their principal activity is administrative.

BUDGET AND FINANCE

Current Funds Expenditures (and Transfers): The costs incurred for goods and services used in the conduct of the institution's operations. Includes the acquisition cost of capital assets, such as equipment and library books, to the extent current funds are budgeted for and used by operating departments for such purposes.

Current Funds Revenues: Unrestricted gifts, grants and other resources earned during the reporting period and restricted resources to the extent that such funds were expended for current operating purposes. Excludes restricted current funds received, but not expended because these revenues have not been earned.

Academic Support (Expenditures) for Public

Institutions: Expenditures for the support services that are an integral part of the public institution's primary mission of instruction, research or public service. Includes expenditures for libraries, museums, galleries, audiovisual services, academic computing support, ancillary support, academic administration, personnel development and course and curriculum development. Academic support expenditures for public institutions are measured differently than academic support expenses for private institutions because private institutions' academic support expenses include depreciation costs and interest costs in amounts associated with this function. In addition, private institutions exclude amounts of capital expenditures associated with

the academic support function. Finally, operations and maintenance expenses associated with the academic support function are included in the amounts reported by private institutions but are reported separately by public institutions.

Auxiliary Enterprises (Expenditures) for Public

Institutions: Expenditures for essentially self-supporting operations of the institution that exist to furnish a service to students, faculty or staff, and that charge a fee that is directly related to, although not necessarily equal to, the cost of the service. Includes mandatory and nonmandatory transfers. Examples are residence halls, food services, student health services, athletics, UNI-Dome and performing arts center. Auxiliary enterprise expenditures are measured differently for public and private institutions. Public institutions include capital expenditure amounts associated with auxiliary enterprise expenditures, but do not include depreciation, interest and operations and maintenance expenses. These amounts are included in private institutions' expenses of auxiliary enterprises.

OTHER

IPEDS: The Integrated Postsecondary Education Data System conducted by National Center for Education Statistics (NCES). IPEDS began in 1986 and involves annual data collections. Survey data are required from all postsecondary institutions that have a Program Participation Agreement (PPA) with the Office of Postsecondary Education, U.S. Department of Education. IPEDS also requests limited data from approximately 3,000 other schools offering postsecondary education programs.

NCA: North Central Association of Colleges and Schools



New Students

New Students

New Student Applications, Admissions and Enrolled (Fall Semester[^])

	1996	1997	1998	1999	2000	2001	2002	2003	2004	2005
Undergraduate										
Applications	6,418	6,518	6,430	6,910	7,199	6,893	6,494	6,232	6,071	6,379
New Freshmen	4,498	4,489	4,479	4,700	4,970	4,688	4,446	4,350	4,216	4,360
Transfers	1,774	1,878	1,824	2,079	2,229	2,205	2,048	1,882	1,855	2,019
Admissions (Offered)	5,214	5,201	5,206	5,332	5,670	5,379	5,083	5,005	4,829	4,999
New Freshmen	3,781	3,707	3,776	3,851	4,066	3,786	3,554	3,518	3,360	3,422
Transfers	1,433	1,494	1,430	1,481	1,604	1,593	1,529	1,487	1,469	1,577
Net Enrolled	3,100	3,044	3,088	3,291	3,430	3,325	2,984	2,882	2,780	2,938
Annual Percent Change	-2.0	-1.8	1.4	6.6	4.2	-3.1	-10.3	-3.4	-3.5	5.7
New Freshmen	2,051	1,957	2,023	2,177	2,263	2,104	1,865	1,785	1,700	1,737
Transfer	1,049	1,087	1,065	1,114	1,167	1,221	1,119	1,097	1,080	1,201
Graduate										
Applications	654	735	774	715	798	882	824	882	902	940
Admissions (Offered)	387	502	526	477	551	679	562	549	524	562
Admitted/Withdrew	112	134	214	134	182	221	193	162	139	152
Net Enrolled	275	368	312	343	369	458	369	387	385	410
Annual Percent Change	-16.4	33.8	-15.2	9.9	7.6	24.1	-19.4	4.9	-0.5	6.5

Source: Office of Enrollment Services & Office of the Registrar

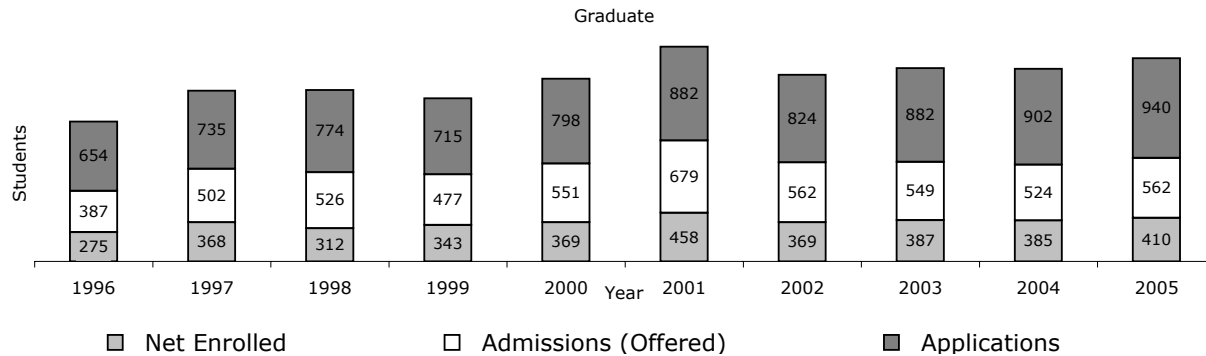
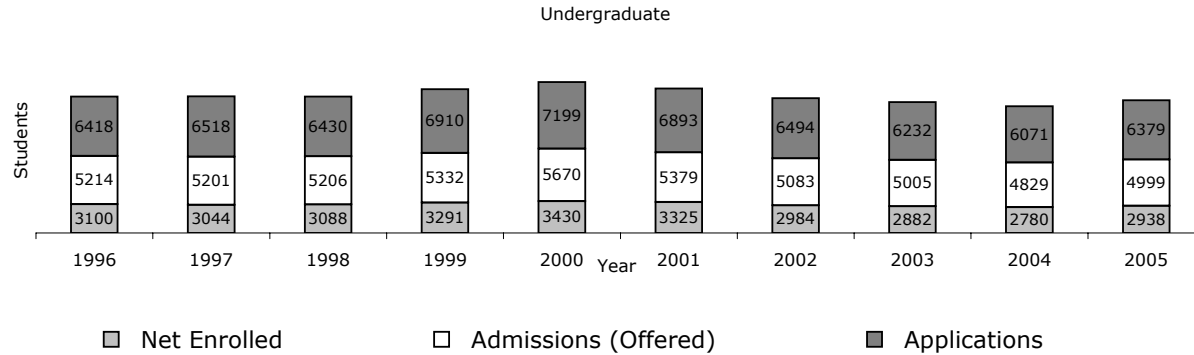
[^]NOTE: Fall 2004 semester reporting was changed to the end of the second week of the semester. Prior to Fall 2004 Undergraduate enrollment reporting was done at the end of the third week of the semester and Graduate enrollment reporting was done at final semester counts.



New Student Applications, Admissions and Enrolled Fall Semester



8



Source: Office of Enrollment Services & Office of the Registrar

New Students Enrolled

	2001		2002		2003		2004		2005	
	N	%	N	%	N	%	N	%	N	%
Total	3,881	100.0	3,459	100.0	3,355	100.0	3,262	100.0	3,433	100.0
Annual Percent Change		-1.4		-10.9		-3.0		-2.8		5.2
Undergraduate	3,456	89.0	3,099	89.6	2,982	88.9	2,877	88.2	3,023	88.1
Resident	3,185	92.2	2,848	91.9	2,780	93.2	2,640	91.8	2,766	91.5
Non-Resident	193	5.6	164	5.3	105	3.5	151	5.2	149	4.9
International	78	2.3	87	2.8	97	3.3	86	3.0	108	3.6
New Freshmen	2,104	60.9	1,865	60.2	1,785	59.9	1,700	59.1	1,737	57.5
Transfer	1,221	35.3	1,119	36.1	1,097	36.8	1,080	37.5	1,201	39.7
Unclassified	131	3.8	115	3.7	100	3.4	97	3.4	85	2.8
Graduate	425	11.0	360	10.4	373	11.1	385	11.8	410	11.9
Resident	317	74.6	264	73.3	277	74.3	272	70.6	303	73.9
Non-Resident	34	8.0	43	11.9	42	11.3	57	14.8	43	10.5
International	74	17.4	53	14.7	54	14.5	56	14.5	64	15.6

Source: Office of the Registrar



New Freshmen Enrollment by Residence

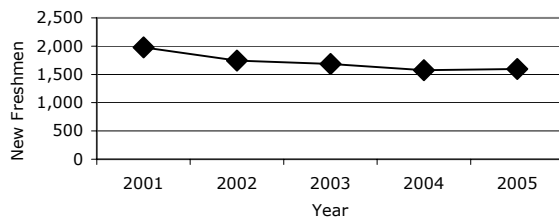
	2001		2002		2003		2004		2005	
	N	%	N	%	N	%	N	%	N	%
New Freshmen	2,104	54.2*	1,865	53.9*	1,785	53.2*	1,700	52.1*	1,737	52.1*
Annual Percent Change		-7.0		-11.4		-4.3		-4.8		2.2
Residents	1,979	94.1	1,743	93.5	1,683	94.3	1,573	92.5	1,598	92.0
Non-Residents	112	5.3	110	5.9	88	4.9	105	6.2	124	7.1
International Students	13	0.6	12	0.6	14	0.8	22	1.3	15	0.9

10

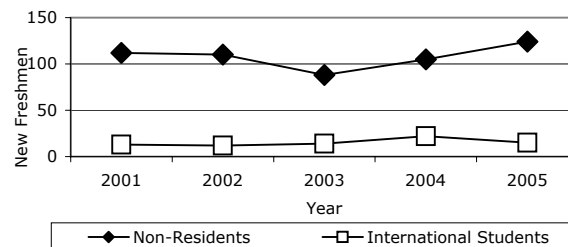
Source: Office of the Registrar

*Percentage of new students who are freshmen

Residents



Non-Residents and International Students



New Freshmen By College: As Indicated on Application for Admission

	2003		2004		2005	
	N	%	N	%	N	%
New Freshmen Total	1,785	100.0	1,700	100.0	1,737	100.0
Annual Percent Change				-4.8		2.2
Business Administration	356	19.9	383	22.5	343	19.8
Education	285	16.0	284	16.7	294	16.9
Humanities and Fine Arts	242	13.6	262	15.4	259	14.9
Natural Sciences	213	11.9	219	12.9	201	11.6
Social and Behavioral Sciences	253	14.2	217	12.8	204	11.7
No Specific College	436	24.4	335	19.7	436	25.1

Source: Office of Enrollment Services

New Freshmen ACT Composite Scores and High School Class Rank



12

	1996	1997	1998	1999	2000	2001	2002	2003	2004	2005
ACT Composite Scores										
Mean	23.2	23.6	23.3	23.0	23.0	22.9	22.8	22.9	22.9	22.8
75 th Percentile	26.1	26.0	26.2	25.9	25.8	24.8	25.0	25.0	25.1	25.1
25 th Percentile	21.3	21.1	20.2	21.0	20.0	20.8	20.0	20.0	20.0	20.0
High School Rank										
Mean	73.2	72.6	72.7	72.9	72.8	72.2	72.0	72.1	71.9	71.3
Percent in Upper 10%	18.9	17.5	18.0	19.1	18.7	18.1	17.7	19.1	19.1	19.0
Percent in Upper 20%	39.9	37.9	40.0	39.7	40.6	38.6	37.5	38.6	38.5	39.1
Percent in Upper 50%	92.7	91.9	91.4	91.5	91.4	90.5	89.9	89.4	89.7	89.5

Source: Office of Enrollment Services

New Undergraduate Transfer Students by Type of Transfer College

	1996	1997	1998	1999	2000	2001	2002	2003	2004	2005
TOTAL	1,049	1,087	1,065	1,114	1,167	1,235	1,119	1,097	1,080	1,201
Annual Percent Change	-6.2	3.6	-2.0	4.6	4.8	5.8	-9.4	-2.0	-1.5	11.2
Iowa Two-Year Public and Private	692	787	731	790	827	866	799	804	769	852
Iowa Area Community Colleges	673	758	704	775	805	852	773	786	757	835
Iowa Two-Year Private	19	29	27	15	22	14	26	18	12	17
Iowa Four-Year Public and Private	204	175	201	196	203	184	170	162	167	203
Iowa Four-Year Public										
Iowa State University	51	36	46	41	37	42	22	43	45	35
University of Iowa	45	48	38	53	49	39	49	40	35	41
Subtotal	96	84	84	94	86	81	71	83	80	76
Iowa Four-Year Private	108	91	117	102	117	103	99	79	87	127
Non-Iowa (US) Total	153	125	133	128	137	185	150	131	144	146
Two-year Out of State	48	28	40	38	50	69	60	64	58	55
Four-year Out of State	105	97	93	90	87	116	90	67	86	91

Source: Office of Enrollment Services





Enrollment

Enrollment

Fall 2005 Students Profile by College

	Total University	Business	Education	H&F Arts	Natural Sciences	S&B Sciences	No Specific College
TOTAL	12,513	2,531	2,863	2,078	1,652	1,984	1,405
Percent	100.0	20.2	22.9	16.6	13.2	15.9	11.2
Full-Time	10,463	2,248	2,301	1,872	1,417	1,806	819
Part-Time	2,050	283	562	206	235	178	586
Female	7,294	1,038	2,167	1,358	623	1,253	855
Male	5,219	1,493	696	720	1,029	731	550
Freshman	2,189	476	380	327	314	290	402
Sophomore	2,004	426	372	384	287	330	205
Junior	2,928	712	572	510	436	555	143
Senior	3,591	826	881	596	500	640	148
Unclassified	240	0	0	0	0	0	240
Graduate	1,561	91	658	261	115	169	267
International Students	422	89	51	82	52	33	115
1 st Majors:	12,513	2,531	2,863	2,078	1,652	1,984	1,405
Undergraduate	10,952	2,440	2,205	1,817	1,537	1,815	1,138
Graduate	1,561	91	658	261	115	169	267
2004-2005 Degrees Granted:	3,176	674	785	585	417	579	136
Baccalaureate (Bachelor's)	2,669	609	574	462	368	520	136
Master's	494	65	199	123	48	59	0
Specialists	3	0	3	0	0	0	0
Doctorates	10	0	9	0	1	0	0



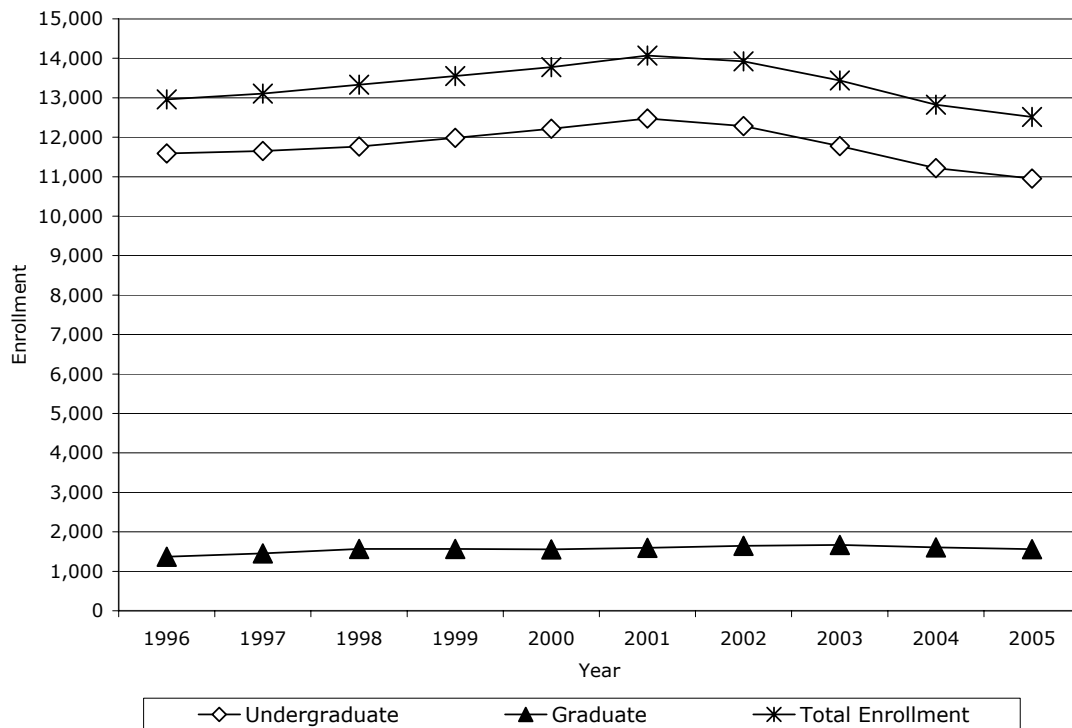
Headcount Enrollment



	1996	1997	1998	1999	2000	2001	2002	2003	2004	2005
Enrollment	12,957	13,108	13,329	13,553	13,774	14,070	13,926	13,441	12,824	12,513
Annual Percent Change	1.2	1.2	1.7	1.7	1.6	2.1	-1.0	-3.5	-4.6	-2.4
Full-Time	10,735	10,863	10,999	11,227	11,524	11,786	11,489	11,076	10,665	10,463
Part-Time	2,222	2,245	2,330	2,326	2,250	2,284	2,437	2,365	2,159	2,050
Undergraduate	11,587	11,654	11,764	11,984	12,218	12,474	12,282	11,774	11,220	10,952
Annual Percent Change	1.5	0.6	0.9	1.9	2.0	2.1	-1.5	-4.1	-4.7	-2.4
Full-Time	10,232	10,352	10,490	10,687	10,974	11,209	10,939	10,510	9,987	9,782
Part-Time	1,355	1,302	1,274	1,297	1,244	1,265	1,343	1,264	1,233	1,170
Graduate	1,370	1,454	1,565	1,569	1,556	1,596	1,644	1,667	1,604	1,561
Annual Percent Change	-1.4	6.1	7.6	0.3	-0.8	2.6	3.0	1.4	-3.8	-2.7
Full-Time	503	511	509	540	550	577	550	566	678	681
Part-Time	867	943	1,056	1,029	1,006	1,019	1,094	1,101	926	880

Source: Office of the Registrar

Headcount Enrollment by Level*



Source: Office of the Registrar

*Includes Full-Time and Part-Time Students

Headcount by College



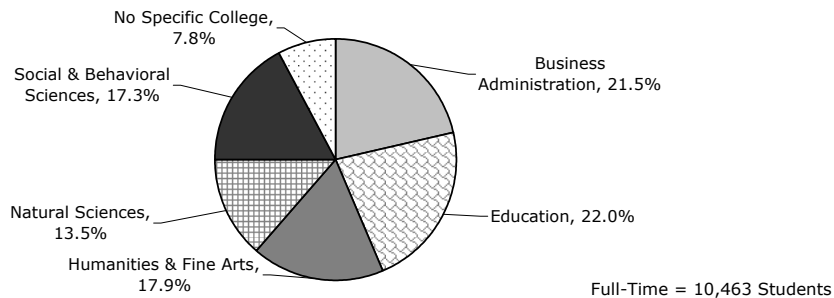
18

	2001		2002		2003		2004		2005	
	N	%	N	%	N	%	N	%	N	%
Total	14,070	100.0	13,926	100.0	13,441	100.0	12,824	100.0	12,513	100.0
Full-Time	11,786	83.8	11,489	82.5	11,076	82.4	10,665	83.2	10,463	83.6
Part-Time	2,284	16.2	2,437	17.5	2,365	17.6	2,159	16.8	2,050	16.4
Business Administration	2,908	20.7	2,855	20.5	2,736	20.4	2,591	20.2	2,531	20.2
Full-Time	2,649	91.1	2,587	90.6	2,422	88.5	2,297	88.7	2,248	88.8
Part-Time	259	8.9	268	9.4	314	11.5	294	11.3	283	11.2
Education	3,273	23.3	3,271	23.5	3,105	23.1	2,960	23.1	2,863	22.9
Full-Time	2,641	80.7	2,630	80.4	2,545	82.0	2,340	79.1	2,301	80.4
Part-Time	632	19.3	641	19.6	560	18.0	620	20.9	562	19.6
Humanities and Fine Arts	2,192	15.6	2,177	15.6	2,155	16.0	2,099	16.4	2,078	16.6
Full-Time	1,967	89.7	1,930	88.7	1,923	89.2	1,889	90.0	1,872	90.1
Part-Time	225	10.3	247	11.3	232	10.8	210	10.0	206	9.9
Natural Sciences	1,821	12.9	1,779	12.8	1,745	13.0	1,713	13.4	1,652	13.2
Full-Time	1,540	84.6	1,505	84.6	1,473	84.4	1,426	83.2	1,417	85.8
Part-Time	281	15.4	274	15.4	272	15.6	287	16.8	235	14.2
Social and Behavioral Sciences	1,964	14.0	2,025	14.5	2,041	15.2	2,034	15.9	1,984	15.9
Full-Time	1,812	92.3	1,833	90.5	1,860	91.1	1,856	91.2	1,806	91.0
Part-Time	152	7.7	192	9.5	181	8.9	178	8.8	178	9.0
No Specific College	1,912	13.6	1,819	13.1	1,659	12.3	1,427	11.1	1,405	11.2
Full-Time	1,177	61.6	1,004	55.2	853	51.4	857	60.1	819	58.3
Part-Time	735	38.4	815	44.8	806	48.6	570	39.9	586	41.7

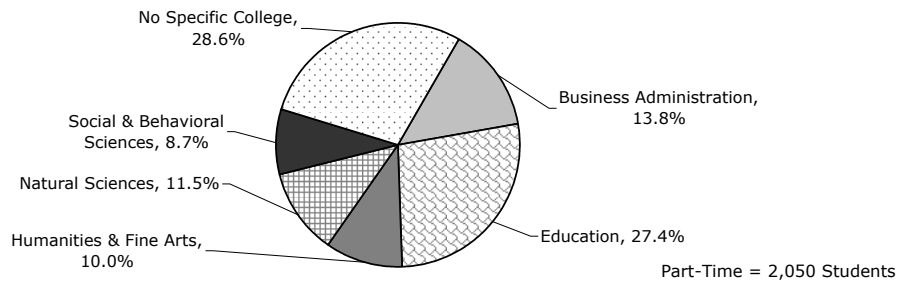
Source: Office of the Registrar

Fall 2005 Headcount by College

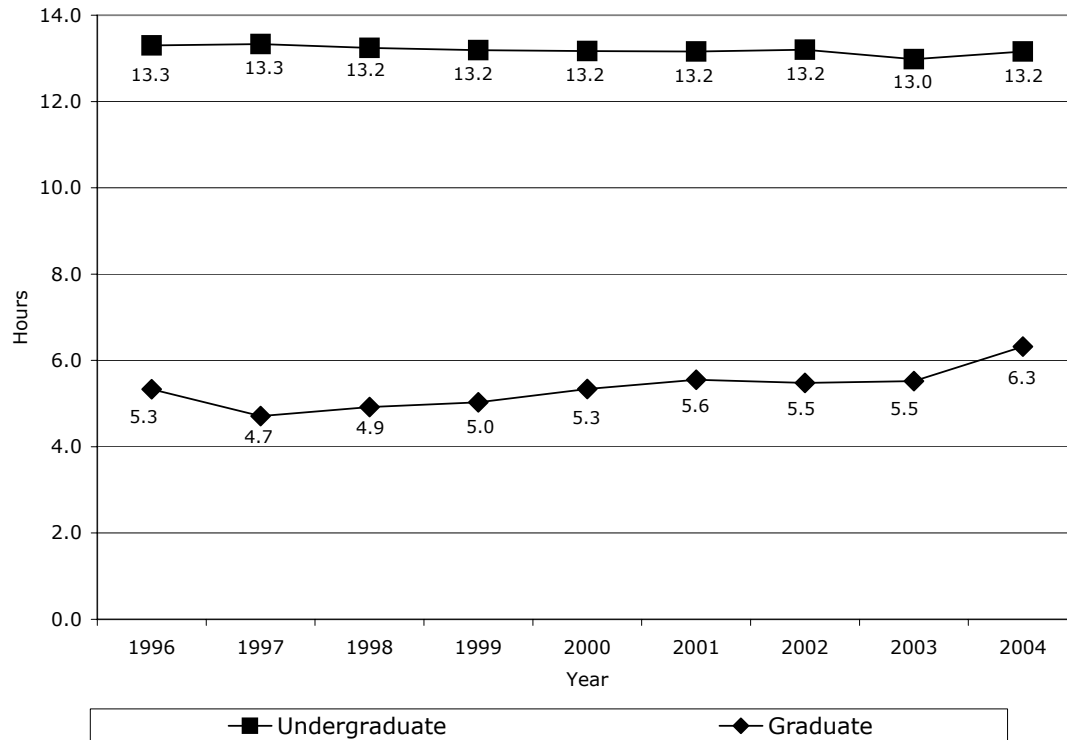
Full-Time



Part-Time



Average Course Load: 1996 - 2004



Enrollment by Term

	2001-2002		2002-2003		2003-2004		2004-2005		2005-2006	
	N	%	N	%	N	%	N	%	N	%
SUMMER	5,997	100.0	6,214	100.0	5,982	100.0	5,505	100.0	5,198	100.0
Annual Percent Change		1.5		3.6		-3.7		-8.0		-5.6
Undergraduate	4,093	68.3	4,168	67.1	4,087	68.3	3,900	70.8	3,596	69.2
Graduate	1,904	31.7	2,046	32.9	1,895	31.7	1,605	29.2	1,602	30.8
FALL	14,070	100.0	13,926	100.0	13,441	100.0	12,824	100.0	12,513	100.0
Annual Percent Change		2.1		-1.0		-3.5		-4.6		-2.4
Undergraduate	12,474	88.7	12,282	88.2	11,774	87.6	11,220	87.5	10,952	87.5
Graduate	1,596	11.3	1,644	11.8	1,667	12.4	1,604	12.5	1,561	12.5
SPRING	13,201	100.0	13,017	100.0	12,415	100.0	11,896	100.0		
Annual Percent Change		1.7		-1.4		-4.6		-4.2		
Undergraduate	11,447	86.7	11,262	86.5	10,807	87.0	10,315	86.7		
Graduate	1,754	13.3	1,755	13.5	1,608	13.0	1,581	13.3		

Source: Office of the Registrar

Note: Reporting= Spring-Third Week; Summer-Final; Fall-Second Week and prior to 2004 Third Week
(reported by calendar year)



Fall On-Campus Headcount and Full-Time Equivalent (FTE) Enrollment by Level

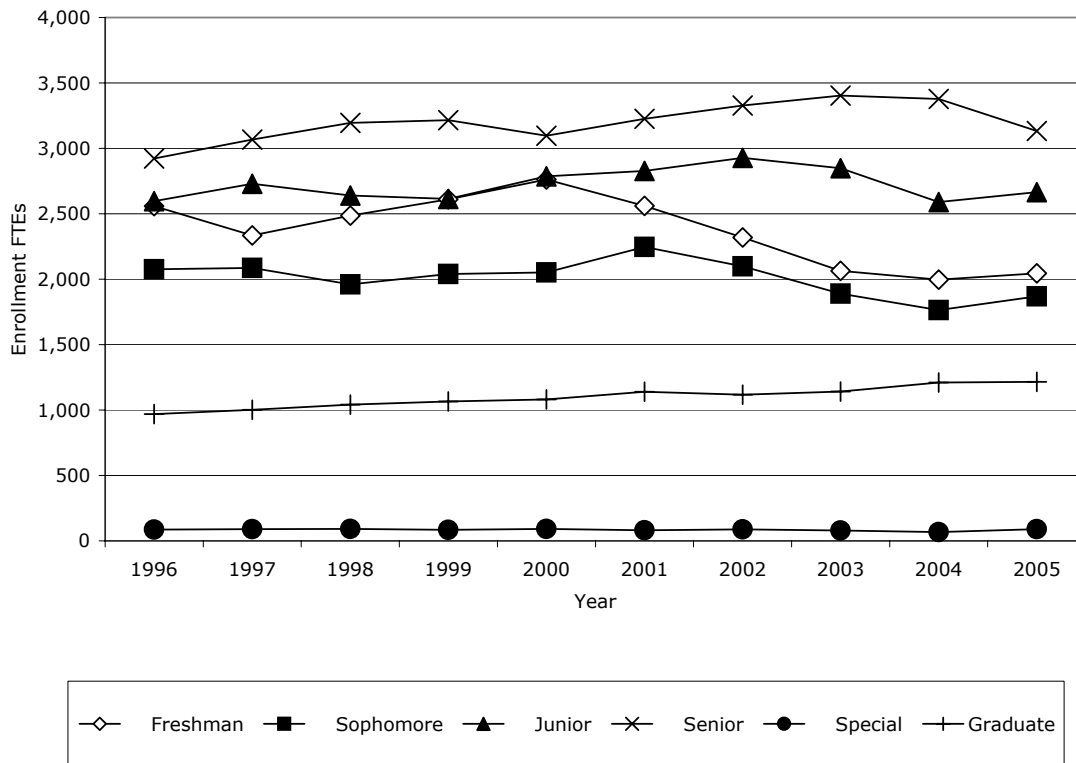


22

	1996	1997	1998	1999	2000	2001	2002	2003	2004	2005
Headcount Enrollment	12,957	13,108	13,329	13,553	13,774	14,070	13,926	13,441	12,824	12,513
Annual Percent Change	1.2	1.2	1.7	1.7	1.6	2.1	-1.0	-3.5	-4.6	-2.4
Undergraduate	11,587	11,654	11,764	11,984	12,218	12,474	12,282	11,774	11,220	10,952
Freshman	2,711	2,524	2,678	2,812	2,979	2,830	2,522	2,278	2,199	2,189
Sophomore	2,234	2,275	2,158	2,224	2,238	2,464	2,293	2,085	1,957	2,004
Junior	2,897	3,025	2,948	2,941	3,143	3,188	3,296	3,195	2,921	2,928
Senior	3,452	3,536	3,684	3,737	3,580	3,735	3,874	3,960	3,936	3,591
Special	293	294	296	270	278	257	297	256	207	240
Graduate	1,370	1,454	1,565	1,569	1,556	1,596	1,644	1,667	1,604	1,561
Master's	1,004	1,081	1,154	1,133	1,144	1,174	1,163	1,173	1,100	1,112
Advanced	366	373	411	436	412	422	481	494	504	449
FTE Enrollment	11,209	11,309	11,415	11,628	11,868	12,081	11,879	11,424	11,006	11,016
Annual Percent Change	1.0	0.9	0.9	1.9	2.1	1.8	-1.7	-3.8	-3.7	0.1
Undergraduate	10,240	10,308	10,374	10,563	10,787	10,941	10,761	10,283	9,795	9,801
Freshman	2,558	2,335	2,487	2,610	2,762	2,561	2,319	2,063	1,997	2,045
Sophomore	2,076	2,087	1,960	2,039	2,051	2,246	2,098	1,890	1,764	1,869
Junior	2,597	2,729	2,640	2,614	2,787	2,827	2,928	2,848	2,589	2,665
Senior	2,922	3,067	3,195	3,216	3,096	3,226	3,328	3,403	3,377	3,133
Special	87	90	92	84	91	81	88	79	68	89
Graduate	969	1,001	1,041	1,065	1,081	1,140	1,118	1,141	1,211	1,215
Master's	744	763	787	800	845	888	839	862	893	933
Advanced	225	238	254	265	236	252	279	279	318	282

Source: Office of the Registrar

Full-Time Equivalent (FTE) Enrollment by Level



Source: Office of the Registrar

Enrollment by Level and Gender

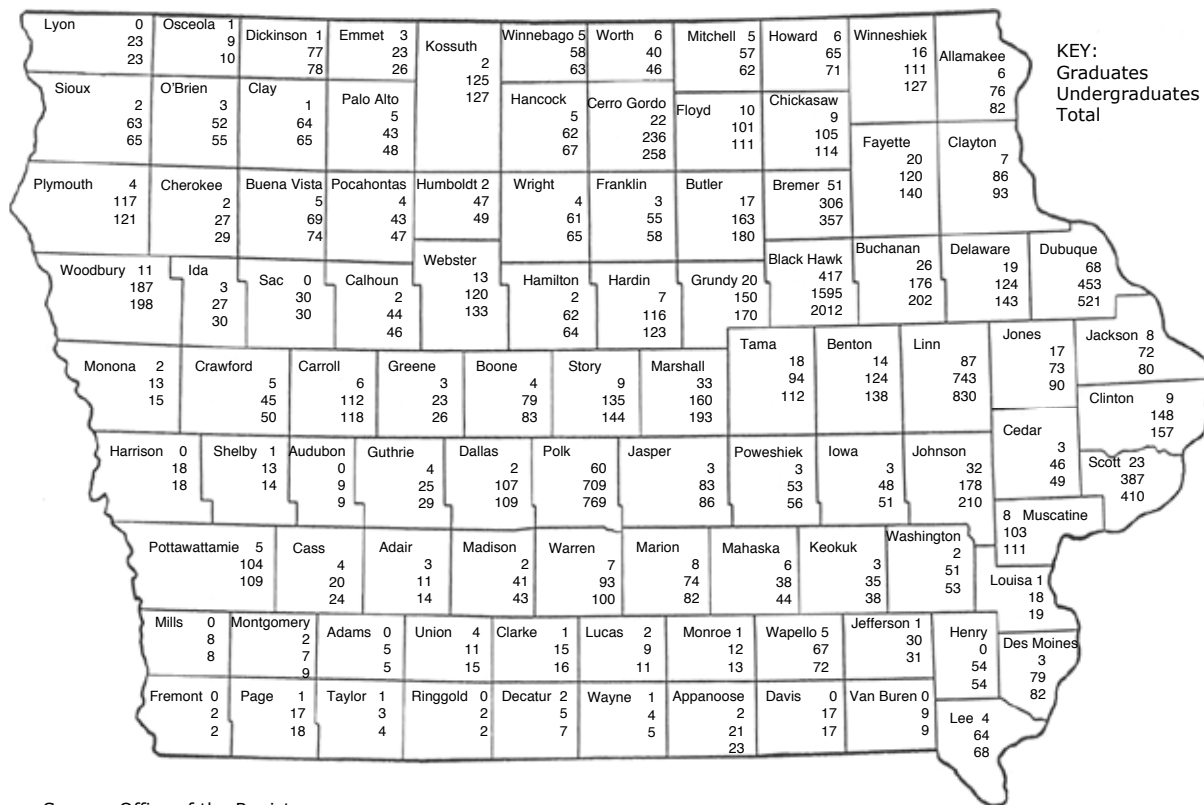


24

	1996	1997	1998	1999	2000	2001	2002	2003	2004	2005
Enrollment	12,957	13,108	13,329	13,553	13,774	14,070	13,926	13,441	12,824	12,513
Female	7,525	7,665	7,812	7,916	8,064	8,292	8,144	7,877	7,457	7,294
Percent	58.1	58.5	58.6	58.4	58.5	58.9	58.5	58.6	58.1	58.3
Male	5,432	5,443	5,517	5,637	5,710	5,778	5,782	5,564	5,367	5,219
Percent	41.9	41.5	41.4	41.6	41.5	41.1	41.5	41.4	41.9	41.7
Undergraduate	11,587	11,654	11,764	11,984	12,218	12,474	12,282	11,774	11,220	10,952
Female	6,658	6,710	6,739	6,892	7,048	7,245	7,042	6,767	6,383	6,258
Percent	57.5	57.6	57.3	57.5	57.7	58.1	57.3	57.5	56.9	57.1
Male	4,929	4,944	5,025	5,092	5,170	5,229	5,240	5,007	4,837	4,694
Percent	42.5	42.4	42.7	42.5	42.3	41.9	42.7	42.5	43.1	42.9
Graduate	1,370	1,454	1,565	1,569	1,556	1,596	1,644	1,667	1,604	1,561
Female	867	955	1,073	1,024	1,016	1,047	1,102	1,110	1,074	1,036
Percent	63.3	65.7	68.6	65.3	65.3	65.6	67.0	66.6	67.0	66.4
Male	503	499	492	545	540	549	542	557	530	525
Percent	36.7	34.3	31.4	34.7	34.7	34.4	33.0	33.4	33.0	33.6

Source: Office of the Registrar

Fall 2005 Enrollment by Admission County



Source: Office of the Registrar

Enrollment by College, Level and Gender



College	2001		2002		2003		2004		2005	
	Female	Male	Female	Male	Female	Male	Female	Male	Female	Male
Enrollment	8,292	5,778	8,144	5,782	7,877	5,564	7,457	5,367	7,294	5,219
Freshman	1,696	1,134	1,526	996	1,359	919	1,295	904	1,314	875
Sophomore	1,390	1,074	1,351	942	1,252	833	1,139	818	1,170	834
Junior	1,811	1,377	1,765	1,531	1,785	1,410	1,603	1,318	1,602	1,326
Senior	2,189	1,546	2,232	1,642	2,228	1,732	2,217	1,719	2,036	1,555
Graduate	1,047	549	1,102	542	1,110	557	1,074	530	1,036	525
Unclassified	159	98	168	129	143	113	129	78	136	104
Business Administration	1,259	1,649	1,204	1,651	1,147	1,589	1,083	1,508	1,038	1,493
Freshman	295	350	227	303	210	291	199	280	190	286
Sophomore	245	348	257	323	203	262	168	257	174	252
Junior	339	466	308	499	337	462	307	423	277	435
Senior	353	419	375	462	351	498	381	490	361	465
Graduate	27	66	37	64	46	76	28	58	36	55
Education	2,566	707	2,550	721	2,408	697	2,247	713	2,167	696
Freshman	413	71	370	89	310	66	269	71	300	80
Sophomore	368	112	358	84	331	87	286	80	295	77
Junior	556	144	540	188	518	162	431	154	435	137
Senior	762	202	792	186	804	206	738	216	670	211
Graduate	467	178	490	174	445	176	523	192	467	191
Humanities and Fine Arts	1,457	735	1,417	760	1,390	765	1,360	739	1,358	720
Freshman	254	125	230	128	205	115	226	106	215	112
Sophomore	249	158	235	118	254	134	224	124	242	142
Junior	338	178	318	234	320	187	297	190	323	187
Senior	413	220	436	232	407	266	401	251	378	218
Graduate	203	54	198	48	204	63	212	68	200	61

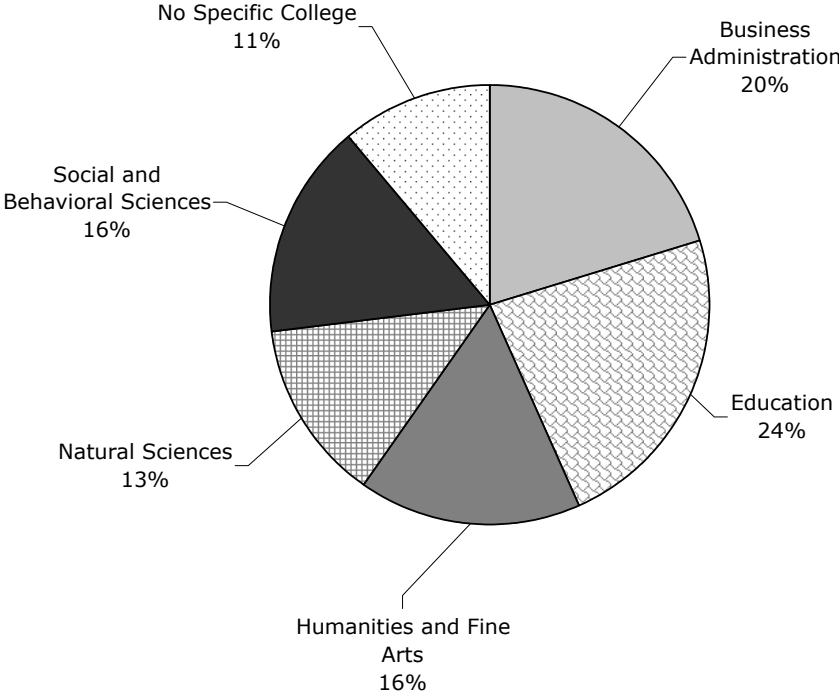
Enrollment by College, Level and Gender (Continued)

College	2001		2002		2003		2004		2005	
	Female	Male	Female	Male	Female	Male	Female	Male	Female	Male
Natural Sciences	664	1,157	631	1,148	620	1,125	612	1,101	623	1,029
Freshman	140	205	136	170	136	183	124	168	157	157
Sophomore	124	206	121	209	122	173	108	178	107	180
Junior	146	293	154	314	129	314	151	265	147	289
Senior	204	367	181	377	189	387	176	414	163	337
Graduate	50	86	39	78	44	68	53	76	49	66
Social and Behavioral Sciences	1,206	758	1,251	774	1,275	766	1,262	772	1,253	731
Freshman	212	131	230	113	205	105	184	116	187	103
Sophomore	222	141	215	123	217	119	196	117	218	112
Junior	332	219	373	224	396	226	362	220	352	203
Senior	364	221	355	264	381	262	421	264	390	250
Graduate	76	46	78	50	76	54	99	55	106	63
No Specific College	1,140	772	1,091	728	1,037	622	893	534	855	550
Freshman	382	252	333	193	293	159	293	163	265	137
Sophomore	182	109	165	85	125	58	157	62	134	71
Junior	100	77	72	72	85	59	55	66	68	75
Senior	93	117	93	121	96	113	100	84	74	74
Graduate	224	119	260	128	295	120	159	81	178	89
Unclassified	159	98	168	129	143	113	129	78	136	104

Source: Office of the Registrar



Fall 2005 Enrollment by College



Fall Enrollment = 12,513

Enrollment by Race/Ethnicity

	2001		2002		2003		2004		2005	
	N	%	N	%	N	%	N	%	N	%
Enrollment	14,070	100.0	13,926	100.0	13,441	100.0	12,824	100.0	12,513	100.0
American Indian/Alaskan Native	30	0.2	31	0.2	32	0.2	34	0.3	26	0.2
Asian/Pacific Islander	142	1.0	128	0.9	141	1.0	125	1.0	129	1.0
Black/African American	370	2.6	397	2.9	426	3.2	425	3.3	415	3.3
Hispanic/Latino	180	1.3	207	1.5	208	1.5	225	1.8	186	1.5
White	12,510	88.9	12,332	88.6	11,780	87.6	11,201	87.3	10,894	87.1
International	355	2.5	366	2.6	384	2.9	351	2.7	422	3.4
No Response	483	3.4	465	3.3	470	3.5	463	3.6	441	3.5
Undergraduate	12,474	100.0	12,282	100.0	11,774	100.0	11,220	100.0	10,952	100.0
American Indian/Alaskan Native	27	0.2	25	0.2	28	0.2	30	0.3	23	0.2
Asian/Pacific Islander	127	1.0	109	0.9	130	1.1	114	1.0	116	1.1
Black/African American	296	2.4	319	2.6	323	2.7	324	2.9	317	2.9
Hispanic/Latino	161	1.3	195	1.6	187	1.6	200	1.8	164	1.5
White	11,268	90.3	11,023	89.7	10,498	89.2	9,978	88.9	9,740	88.9
International	191	1.5	207	1.7	206	1.7	188	1.7	230	2.1
No Response	404	3.2	404	3.3	402	3.4	386	3.4	362	3.3
Graduate	1,596	100.0	1,644	100.0	1,667	100.0	1,604	100.0	1,561	100.0
American Indian/Alaskan Native	3	0.2	6	0.4	4	0.2	4	0.2	3	0.2
Asian/Pacific Islander	15	0.9	19	1.2	11	0.7	11	0.7	13	0.8
Black/African American	74	4.6	78	4.7	103	6.2	101	6.3	98	6.3
Hispanic/Latino	19	1.2	12	0.7	21	1.3	25	1.6	22	1.4
White	1,242	77.8	1,309	79.6	1,282	76.9	1,223	76.2	1,154	73.9
International	164	10.3	159	9.7	178	10.7	163	10.2	192	12.3
No Response	79	4.9	61	3.7	68	4.1	77	4.8	79	5.1

Source: Office of the Registrar



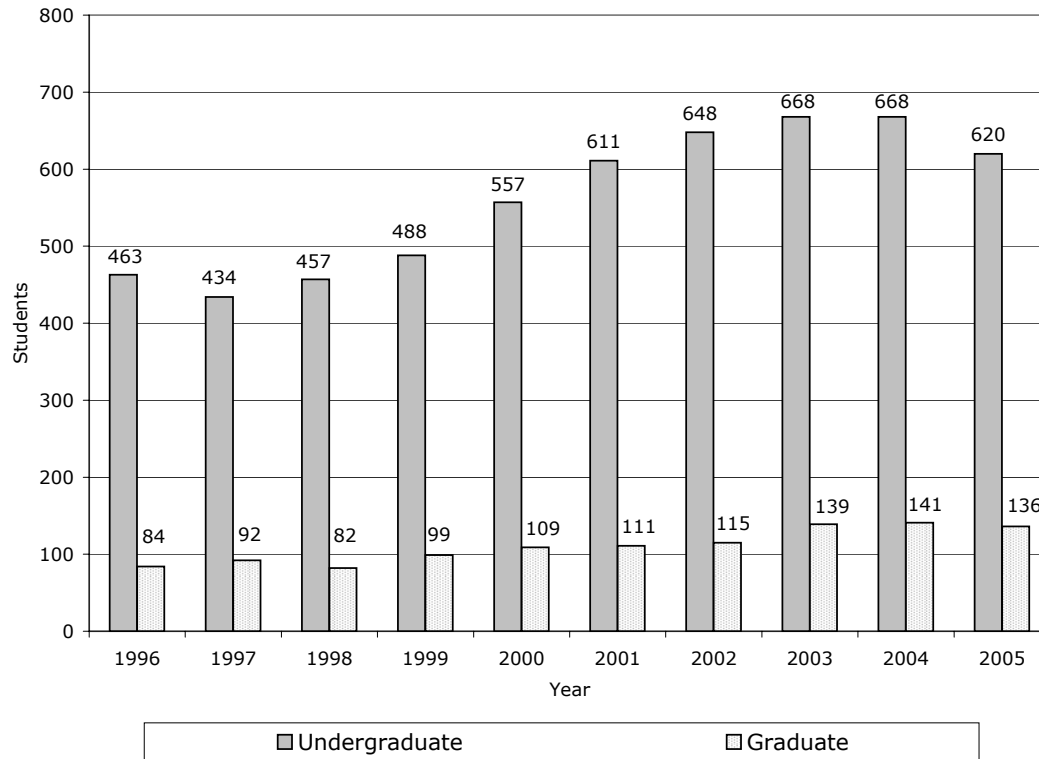
Minority Student Enrollment (Fall Semester)



	1996	1997	1998	1999	2000	2001	2002	2003	2004	2005
Enrollment	547	526	539	587	666	722	763	807	809	756
Annual Percent Change	-3.5	-3.8	2.5	8.9	13.5	8.4	5.7	5.8	0.2	-6.6
American Indian/Alaskan	28	27	25	33	35	30	31	32	34	26
Asian/Pacific Islander	160	149	139	141	140	142	128	141	125	129
Black/African American	262	256	283	308	356	370	397	426	425	415
Hispanic/Latino	97	94	92	105	135	180	207	208	225	186
Undergraduate	463	434	457	488	557	611	648	668	668	620
Annual Percent Change	-1.9	-6.3	5.3	6.8	14.1	9.7	6.1	3.1	0.0	-7.2
American Indian/Alaskan	26	24	23	28	31	27	25	28	30	23
Asian/Pacific Islander	146	132	126	128	124	127	109	130	114	116
Black/African American	200	198	222	242	283	296	319	323	324	317
Hispanic/Latino	91	80	86	90	119	161	195	187	200	164
Graduate	84	92	82	99	109	111	115	139	141	136
Annual Percent Change	-11.6	9.5	-10.9	20.7	10.1	1.8	3.6	20.9	1.4	-3.5
American Indian/Alaskan	2	3	2	5	4	3	6	4	4	3
Asian/Pacific Islander	14	17	13	13	16	15	19	11	11	13
Black/African American	62	58	61	66	73	74	78	103	101	98
Hispanic/Latino	6	14	6	15	16	19	12	21	25	22

Source: Office of the Registrar

Minority Student Enrollment



Source: Office of the Registrar

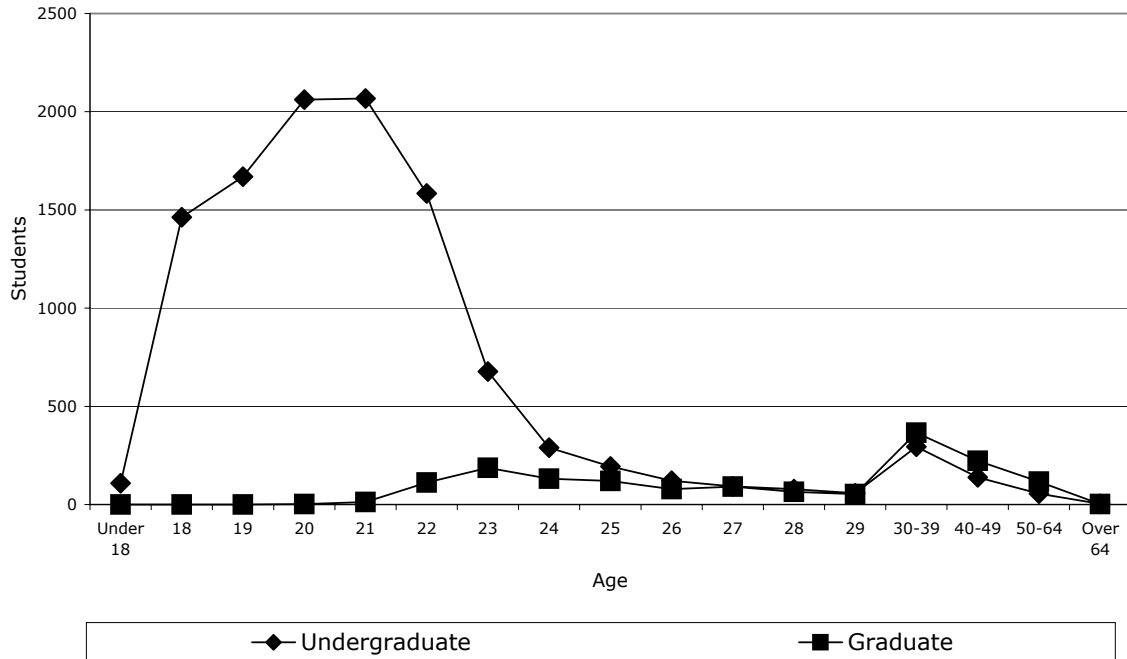
Enrollment by Age



	2000		2001		2002		2003		2004		2005	
	UG	G	UG	G	UG	G	UG	G	UG	G	UG	G
Total Enrollment	12,218	1,556	12,474	1,596	12,282	1,644	11,774	1,667	11,220	1,604	10,952	1,561
Under 18	146	0	423	0	110	0	52	0	106	0	108	0
18	1,930	0	2,028	0	1,553	0	1,004	0	1,435	0	1,463	0
19	2,030	0	2,257	0	1,979	0	1,734	0	1,712	2	1,669	0
20	2,352	2	2,407	2	2,472	1	2,053	0	1,964	1	2,062	2
21	2,308	8	2,293	27	2,453	7	2,461	4	2,338	15	2,067	13
22	1,496	75	1,361	95	1,682	100	1,978	69	1,682	114	1,584	112
23	605	132	474	144	615	121	980	145	665	154	677	187
24	267	104	226	123	291	132	361	123	290	140	289	132
25	174	91	174	94	177	105	192	112	184	95	194	120
26	113	71	109	100	130	80	145	106	118	101	121	79
27	87	81	84	74	80	88	104	77	100	85	92	91
28	77	68	60	68	80	85	79	70	77	60	78	65
29	61	58	53	58	52	66	60	69	51	67	58	53
30-39	317	435	293	385	355	403	341	436	290	370	294	366
40-49	198	315	176	307	178	309	159	277	148	246	138	223
50-64	55	115	55	119	73	146	68	179	59	153	55	116
Over 64	2	1	1	0	2	1	3	0	1	1	3	2

Enrollment by Age

2005



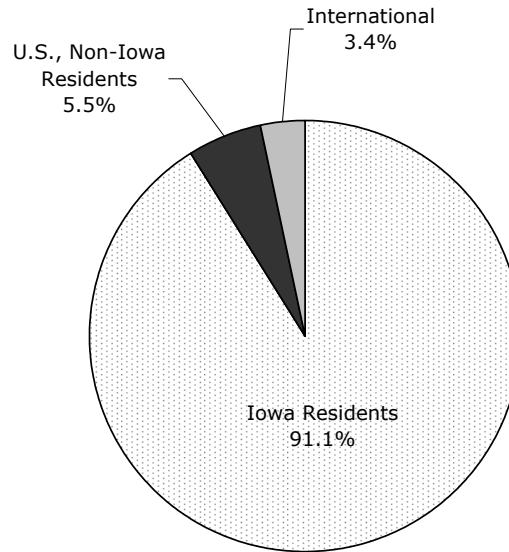
Enrollment by Residence



	2001		2002		2003		2004		2005	
	N	%	N	%	N	%	N	%	N	%
Enrollment	14,070	100.0	13,926	100.0	13,441	100.0	12,824	100.0	12,513	100.0
Iowa Resident	13,010	92.5	12,781	91.8	12,356	91.9	11,793	92.0	11,400	91.1
U.S., Non-Iowa Resident	705	5.0	779	5.6	701	5.2	680	5.3	691	5.5
International	355	2.5	366	2.6	384	2.9	351	2.7	422	3.4
New Freshmen	2,104	100.0	1,865	100.0	1,785	100.0	1,700	100.0	1,737	100.0
Iowa Resident	1,979	94.1	1,743	93.5	1,683	94.3	1,573	92.5	1,598	92.0
U.S., Non-Iowa Resident	112	5.3	110	5.9	88	4.9	105	6.2	124	7.1
International	13	0.6	12	0.6	14	0.8	22	1.3	15	0.9
Undergraduate	12,474	100.0	12,282	100.0	11,774	100.0	11,220	100.0	10,952	100.0
Iowa Resident	11,754	94.2	11,504	93.7	11,061	93.9	10,516	93.7	10,185	93.0
U.S., Non-Iowa Resident	529	4.2	571	4.6	507	4.3	516	4.6	537	4.9
International	191	1.5	207	1.7	206	1.7	188	1.7	230	2.1
Graduate	1,596	100.0	1,644	100.0	1,667	100.0	1,604	100.0	1,561	100.0
Iowa resident	1,256	78.7	1,277	77.7	1,295	77.7	1,277	79.6	1,215	77.8
U.S., Non-Iowa Resident	176	11.0	208	12.7	194	11.6	164	10.2	154	9.9
International	164	10.3	159	9.7	178	10.7	163	10.2	192	12.3

Source: Office of the Registrar

Percentage of Enrollment by Residence*



Fall 2005 Enrollment = 12,513

Source: Office of the Registrar

*Includes undergraduates and graduates

International Students by Country: Fall 2005*



36

Country	N	Country	N	Country	N	Country	N
Albania	1	Ecuador	5	Mali	1	Sweden	2
Argentina	5	Finland	1	Mexico	4	Switzerland	4
Australia	1	France	4	Mongolia	1	Taiwan	15
Austria	3	Germany	2	Nepal	6	Tanzania	3
Bahrain	2	Ghana	2	Netherlands	1	Thailand	2
Bangladesh	1	Hong Kong	33	Nigeria	2	Trinidad/Tobago	1
Barbados	1	India	23	Oman	1	Turkey	3
Belize	1	Indonesia	15	Peru	8	Ukraine	1
Brazil	9	Iran	2	Philippines	2	United Kingdom	3
Bulgaria	1	Israel	1	Poland	7	Upper Volta	1
Burma	1	Italy	1	Portugal	1	Vietnam	4
Canada	12	Jamaica	1	Romania	5	Zaire	2
Chile	2	Japan	30	Russia	61	Zimbabwe	1
China	22	Jordan	1	Rwanda	3		
Colombia	5	Kazakhstan	2	Saudi Arabia	30		
Costa Rica	1	Kenya	6	Siera Leone	1		
Croatia	2	Kuwait	3	Singapore	3		
Cypress	1	Latvia	1	Slovakia	1		
Czechoslovakia	1	Madagascar	2	South Korea	26		
Denmark	4	Malaysia	4	Sudan	1	TOTAL	422

Source: Office of the Registrar

*Includes undergraduates and graduates

Top 5 Countries of Origin for International Students

Fall	Country	N	Country	N	Country	N	Country	N	Country	N	Total International Students
2000	Russia	42	Japan	27	PR China	21	Saudia Arabia	19	South Korea	15	339
2001	Russia	48	Japan	24	PR China	24	South Korea	19	Canada	13	355
2002	Japan	51	Russia	45	PR China	18	India	17	Taiwan	14	366
					South Korea	18					
2003	Russia	51	Japan	43	Hong Kong	28	South Korea	25	PR China	21	384
2004	Russia	50	Japan	34	India	21	Peru	16	PR China	15	351
									South Korea	15	
2005	Russia	61	Hong Kong	33	Japan	30	South Korea	26	India	23	422
					Saudi Arabia	30					

Source: Office of the Registrar



International Students by College*



College	2001		2002		2003		2004		2005	
	N	%	N	%	N	%	N	%	N	%
TOTAL	355	100.0	366	100.0	384	100.0	351	100.1	422	100.0
Annual Percent Change		4.7		3.1		4.9		-8.6		20.2
Business Administration	58	16.3	59	16.1	80	20.8	57	16.2	89	21.1
Education	53	14.9	47	12.8	42	10.9	55	15.7	51	12.1
Humanities and Fine Arts	69	19.4	68	18.7	71	18.5	70	20.0	82	19.4
Natural Sciences	61	17.2	63	17.2	64	16.7	65	18.5	52	12.3
Social and Behavioral Sciences	36	10.1	36	9.8	28	7.3	26	7.4	33	7.8
No Specific College	78	22.0	93	25.4	99	25.8	78	22.2	115	27.3

38

Source: Office of the Registrar

*Includes undergraduates and graduates

Majors by College and Level (1st Major Only)

	1996	1997	1998	1999	2000	2001	2002	2003	2004	2005
Business Administration										
Undergraduate	2,604	2,588	2,638	2,672	2,727	2,815	2,754	2,614	2,505	2,440
Graduate	77	87	93	81	87	93	101	122	86	91
Total	2,681	2,675	2,731	2,753	2,814	2,908	2,855	2,736	2,591	2,531
Education										
Undergraduate	2,136	2,284	2,441	2,485	2,539	2,628	2,607	2,484	2,245	2,205
Graduate	504	500	599	703	662	645	664	621	715	658
Total	2,640	2,784	3,040	3,188	3,201	3,273	3,271	3,105	2,960	2,863
Humanities and Fine Arts										
Undergraduate	1,699	1,753	1,746	1,887	1,956	1,935	1,931	1,888	1,819	1,817
Graduate	240	279	313	257	257	257	246	267	280	261
Total	1,939	2,032	2,059	2,144	2,213	2,192	2,177	2,155	2,099	2,078
Natural Sciences										
Undergraduate	1,565	1,612	1,623	1,801	1,696	1,685	1,662	1,633	1,584	1,537
Graduate	129	118	106	120	146	136	117	112	129	115
Total	1,694	1,730	1,729	1,921	1,842	1,821	1,779	1,745	1,713	1,652
Social and Behavioral Sciences										
Undergraduate	1,822	1,797	1,765	1,701	1,759	1,842	1,897	1,911	1,880	1,815
Graduate	103	105	91	97	102	122	128	130	154	169
Total	1,925	1,902	1,856	1,798	1,861	1,964	2,025	2,041	2,034	1,984

Majors by College and Level (Continued)

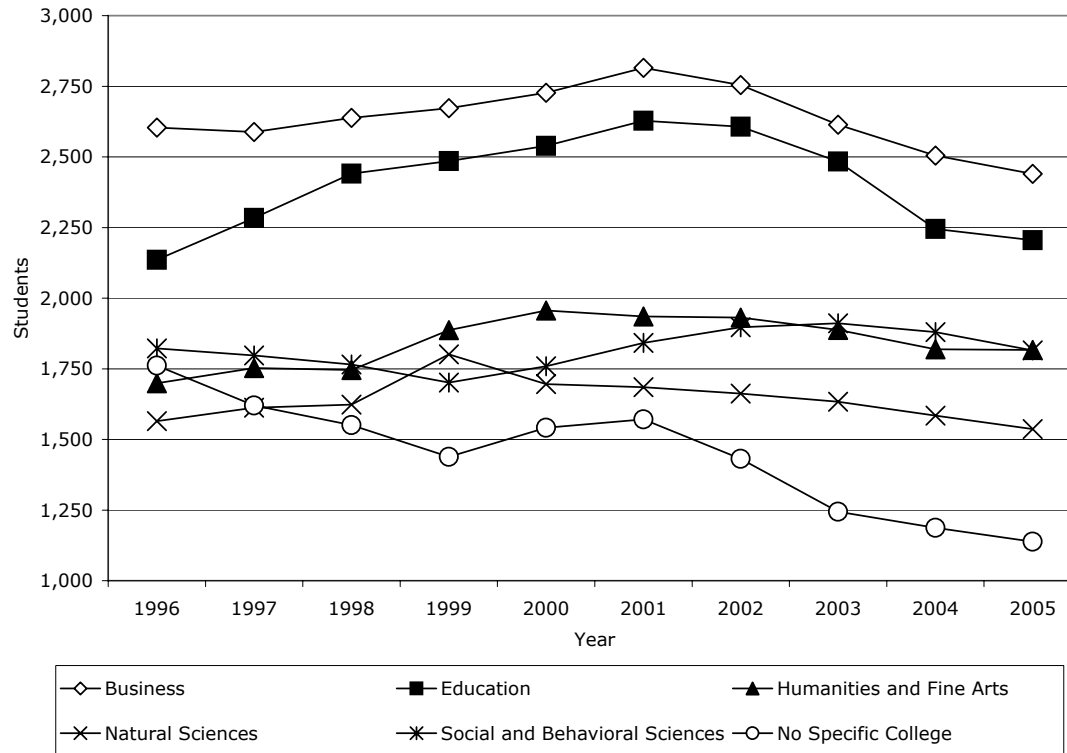


40

	1996	1997	1998	1999	2000	2001	2002	2003	2004	2005
Pre-Professionals										
Undergraduate	261	193	179	140	120	113	121	127	140	145
Graduate	0	0	0	0	0	0	0	0	0	0
Total	261	193	179	140	120	113	121	127	140	145
Undecided										
Undergraduate	788	726	673	671	800	865	738	645	583	551
Graduate	0	0	0	0	0	2	0	0	0	0
Total	788	726	673	671	800	867	738	645	583	551
Unclassified										
Undergraduate	293	294	296	204	189	184	185	126	137	154
Graduate	0	0	0	0	0	0	0	0	0	0
Total	293	294	296	204	189	184	185	126	137	154
Special										
Undergraduate	67	66	52	66	89	73	65	66	71	60
Graduate	0	0	0	0	0	0	0	0	0	0
Total	67	66	52	66	89	73	65	66	71	60
Non-Degree Graduates										
Total	317	365	363	311	302	341	388	415	240	267
Gen Studies & Ind. Studies, BLS										
Undergraduate	352	341	351	357	343	334	322	280	256	228
Total Other Program	2,078	1,985	1,914	1,749	1,843	1,912	1,819	1,659	1,427	1,405

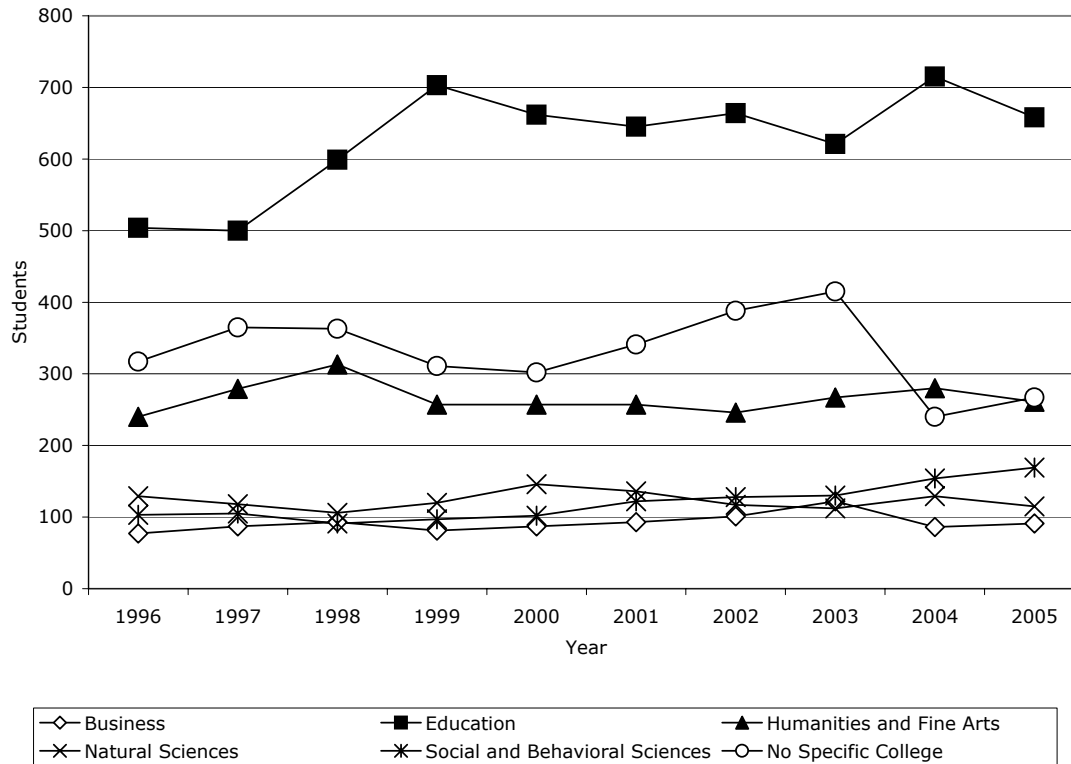
Source: Office of the Registrar

Undergraduate Majors by College

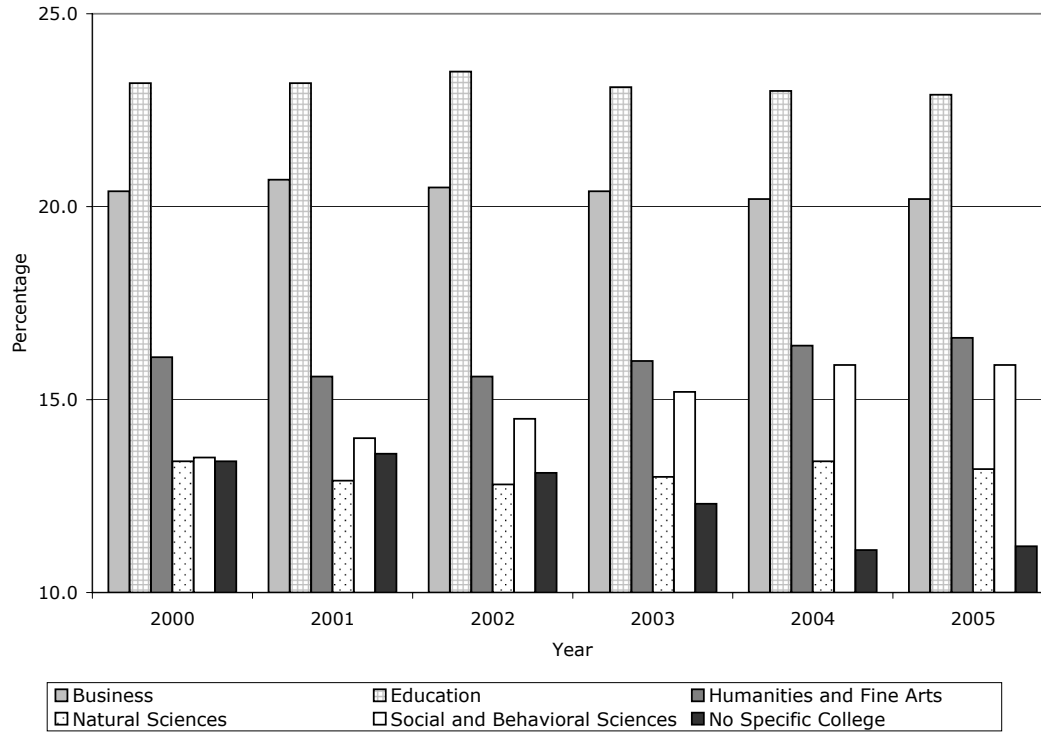


Source: Office of the Registrar

Graduate Majors by College



Percentage of 1st Majors Only by College*



Source: Office of the Registrar

*Includes undergraduates and graduates

Continuing Education Credit Enrollment Trends



	1999-2000	2000-2001	2001-2002	2002-2003	2003-2004	2004-2005
Total	8,964	9,845	9,819	10,203	9,528	9,413
Annual Percent Change	-0.9	9.8	-0.3	3.9	-6.6	-1.2
Off-Campus	5,561	6,408	5,617	5,543	5,182	5,629
On-Campus	823	645	689	809	814	910
Iowa Communications Network (ICN)	1,268	1,484	1,631	1,686	1,768	1,606
World Wide Web (WWW)	494	464	828	1,260	1,002	630
Guided Independent Study-Print	743	700	706	454	372	294
Guided Independent Study-Web	75	144	348	451	390	344

44

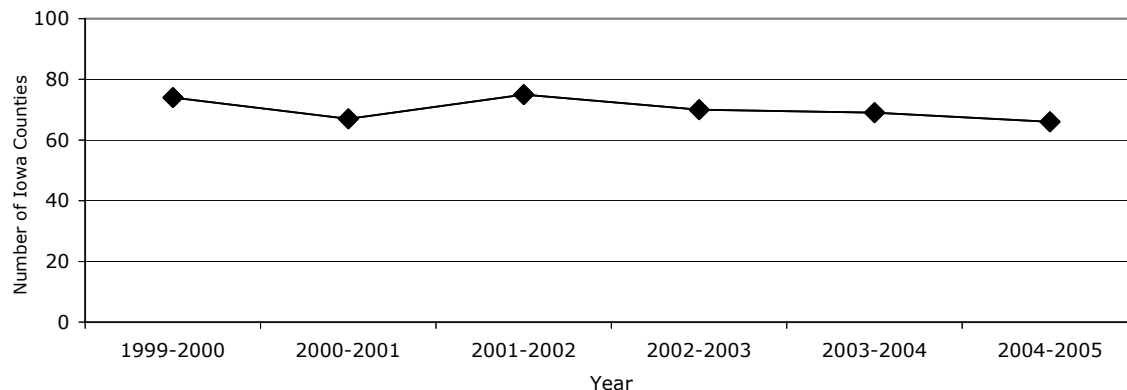
Source: Continuing Education and Special Programs

Continuing Education Courses Offered

	1999-2000	2000-2001	2001-2002	2002-2003	2003-2004	2004-2005
Iowa Counties	74	67	75	70	69	66
Iowa Cities/Towns	126	127	140	130	137	122
Number of Off-Campus Degree and Certificate Programs	20	20	20	18	19	20

Source: Continuing Education and Special Programs

Continuing Education Courses Offered in Iowa Counties



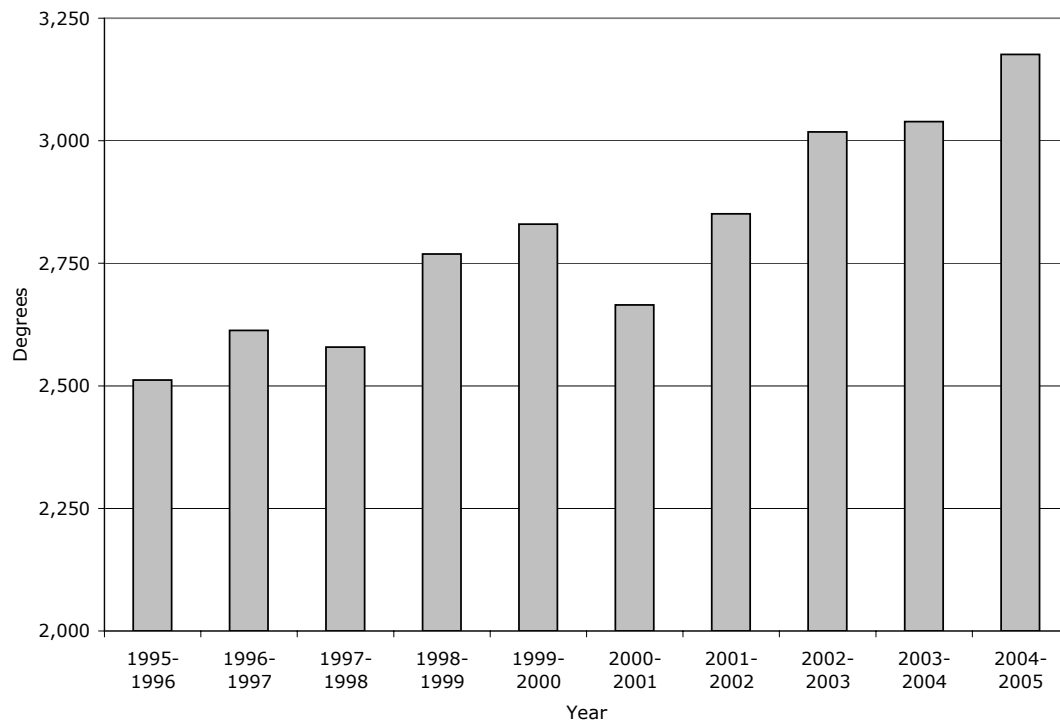
Annual Degrees Awarded by Level



	1995- 1996	1996- 1997	1997- 1998	1998- 1999	1999- 2000	2000- 2001	2001- 2002	2002- 2003	2003- 2004	2004- 2005
Total Degrees Awarded	2,512	2,613	2,579	2,769	2,830	2,665	2,851	3,018	3,039	3,176
Baccalaureate	2,135	2,175	2,214	2,327	2,386	2,266	2,420	2,592	2,584	2,669
Master's	357	425	353	429	426	383	415	405	434	494
Specialists	8	3	2	6	10	3	4	9	11	3
Doctorates	12	10	10	7	8	13	12	12	10	10
Undergraduate Degrees Awarded	2,135	2,175	2,214	2,327	2,386	2,266	2,420	2,592	2,584	2,669
Bachelor of Arts	2,046	2,066	2,111	2,229	2,254	2,144	2,307	2,449	2,463	2,514
Bachelor of Fine Arts	7	3	4	2	8	5	8	7	8	9
Bachelor of Music	20	26	21	17	28	20	22	24	16	22
Bachelor of Science	30	54	65	63	77	76	71	84	23	90
Bachelor of Technology	22	16	3	5	4	2	0	1	74	0
Bachelor of Liberal Studies	10	10	10	11	15	19	12	27	0	34
Graduate Degrees Awarded	377	438	365	442	444	399	431	426	455	507
Master of Accounting	0	0	0	0	0	0	2	7	23	13
Master of Arts in Education	140	125	126	121	127	92	107	114	127	147
Master of Arts	184	253	172	242	244	211	217	215	198	206
Master of Business Administration	20	27	33	37	35	55	36	5	21	52
Master of Music	7	7	6	13	5	6	11	12	11	19
Master of Philosophy	0	0	0	0	0	0	0	0	0	0
Master of Public Policy	2	5	7	7	3	1	10	8	11	6
Master of Science	4	8	9	9	12	18	16	17	13	21
Master of Social Work	0	0	0	0	0	0	16	27	30	30
Specialist in Education	8	3	2	6	10	3	4	9	11	3
Specialist	0	0	0	0	0	0	0	0	0	0
Doctor of Industrial Technology	4	6	2	2	2	11	5	2	2	1
Doctor of Education	8	4	8	5	6	2	7	10	8	9

Source: Office of the Registrar

Annual Degrees Awarded*



Source: Office of the Registrar

*Includes undergraduates and graduates



Degrees Granted by College: Years 2000 - 2005



	2000- 2001	2001- 2002	2002- 2003	2003- 2004	2004- 2005
Total Degrees Awarded	2,665	2,851	3,016	3,039	3,176
Baccalaureate	2,266	2,420	2,590	2,584	2,669
Master's	383	415	405	434	494
Specialists	3	4	9	11	3
Doctorates	13	12	12	10	10
Business Administration	499	575	568	615	674
B.A./Teaching	2	4	5	8	3
B.A./Liberal Arts	442	533	551	563	606
M.B.A.	55	36	5	21	52
Master of Accounting	0	2	7	23	13
Education	698	752	809	802	785
B.A./Teaching	417	449	481	452	397
B.A./Liberal Arts	113	125	119	138	177
M.A./Education	92	107	114	127	147
M.A./Liberal Arts	71	60	76	66	52
Specialist in Ed.	3	4	9	11	3
Doctor of Education	2	7	10	8	9
Humanities and Fine Arts	534	537	585	542	585
B.A./Teaching	88	65	90	64	82
B.A./Liberal Arts	306	325	347	351	349
Bachelor Fine Arts	5	8	7	8	9
Bachelor of Music	20	22	24	23	22
M.A./Liberal Arts	109	106	105	85	104
Master of Music	6	11	12	11	19

Degrees Granted by College: Years 2000 - 2005 (Continued)

	2000- 2001	2001- 2002	2002- 2003	2003- 2004	2004- 2005
Natural Sciences	395	386	390	359	417
B.A./Teaching	53	60	59	45	58
B.A./Liberal Arts	222	207	203	203	220
Bachelor of Science	73	67	83	74	90
Bachelor of Technology	2	0	1	0	0
M.A./Liberal Arts	16	31	25	22	27
Master of Science	18	16	17	13	21
Doctor of Industrial Tech	11	5	2	2	1
Social and Behavioral Sciences	402	466	516	593	579
B.A./Teaching	45	48	56	46	57
B.A./Liberal Arts	338	368	415	481	463
Bachelor of Science	3	4	1	0	0
M.A./Liberal Arts	15	20	9	25	23
Master of Public Policy	1	10	8	11	6
Master of Social Work	0	16	27	30	30
No Specific College	137	135	148	128	136
B.A./Liberal Arts	118	123	121	112	102
Bachelor of Liberal Studies	19	12	27	16	34

Source: Office of the Registrar

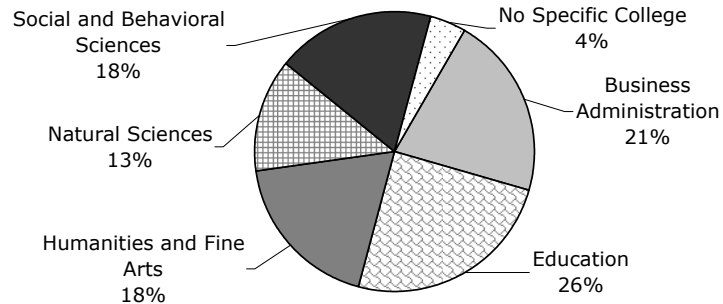
2004 - 2005 Degrees Granted by College



50

	Baccalaureates		Master's		Specialists		Doctorates	
	N	%	N	%	N	%	N	%
Total Degrees Granted	2,669	100.0	494	100.0	3	100.0	10	100.0
Business Administration	609	22.8	65	13.2	-	-	-	-
Education	574	21.5	199	40.3	3	100.0	9	90.0
Humanities and Fine Arts	462	17.3	123	24.9	-	-	-	-
Natural Sciences	368	13.8	48	9.7	-	-	1	10.0
Social and Behavioral Sciences	520	19.5	59	11.9	-	-	-	-
No Specific College	136	5.1	0	0.0	-	-	-	-

Source: Office of the Registrar



2004-2005 Degrees by College
3,176 Degrees Granted

Retention and Graduation Analysis

Admit Year	Total First Time Freshmen	Continuing 2nd Year		Graduating 4th Year		Graduating 6th Year	
		N	%	N	%	N	%
1992	1,659	1,350	81.4	435	26.2	1,032	62.2
1993	1,807	1,449	80.2	489	27.1	1,136	62.9
1994	1,856	1,498	80.7	539	29.0	1,155	62.2
1995	2,007	1,641	81.8	604	30.1	1,289	64.2
1996	2,012	1,649	82.0	673	33.4	1,338	66.5
1997	1,919	1,582	82.4	552	28.8	1,252	65.2
1998	1,982	1,605	81.0	585	29.5	1,274	64.3
1999	2,124	1,729	81.4	712	33.5	1,380	65.0
2000	2,218	1,863	84.0	751	33.9	-	-
2001	2,064	1,681	81.4	666	32.3	-	-
2002	1,822	1,468	80.6	-	-		
2003	1,742	1,417	81.4				
2004	1,657	1,337	80.9				
2005	1,694						

Source: Office of the Registrar

Residence Hall Occupancy by Level, Gender and Year: 2001 - 2005

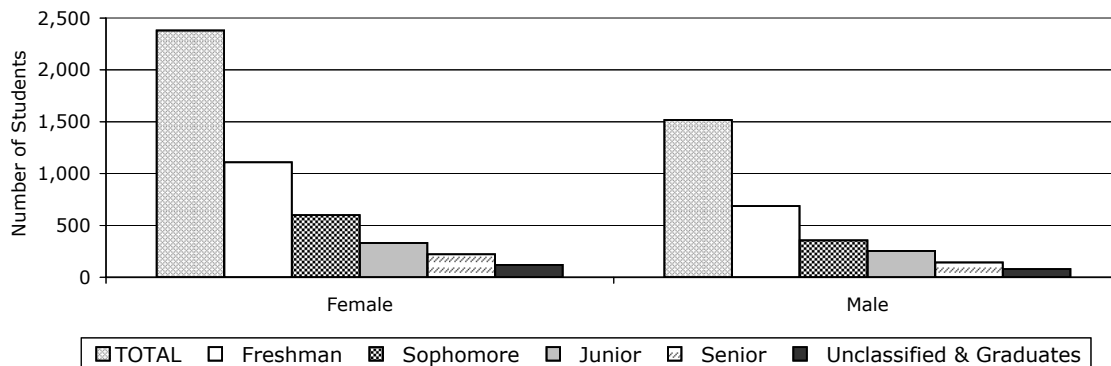


52

Fall 2005	Female	Male	Total	Year	Total
TOTAL	2,381	1,517	3,898		
Freshman	1,110	686	1,796	2001	4,613
Sophomore	600	357	957	2002	4,121
Junior	330	253	583	2003	3,818
Senior	221	142	363	2004	3,742
Unclassified & Graduates	120	79	199	2005	3,898

Source: Department of Residence

Residence Hall Occupancy - Fall 2005





**University of
Northern
Iowa**

Alumni

Alumni

Total Living Alumni by College

College	2002		2003		2004		2005***	
	N	%	N	%	N	%	N	%
TOTAL Living Alumni**	87,664	100.0	89,863	100.0	91,400	100.0	93,683	100.0
Business Administration	16,677	19.0	17,166	19.1	17,840	19.5	18,418	19.7
Education*	31,480	35.9	32,186	35.8	31,696	34.7	32,091	34.2
Humanities and Fine Arts	14,657	16.7	15,052	16.8	15,491	17.0	15,945	17.0
Natural Sciences	11,619	13.3	11,867	13.2	12,190	13.3	12,518	13.4
Social and Behavioral Sciences	13,231	15.1	13,592	15.1	14,183	15.5	14,711	15.7

Source: Alumni Association

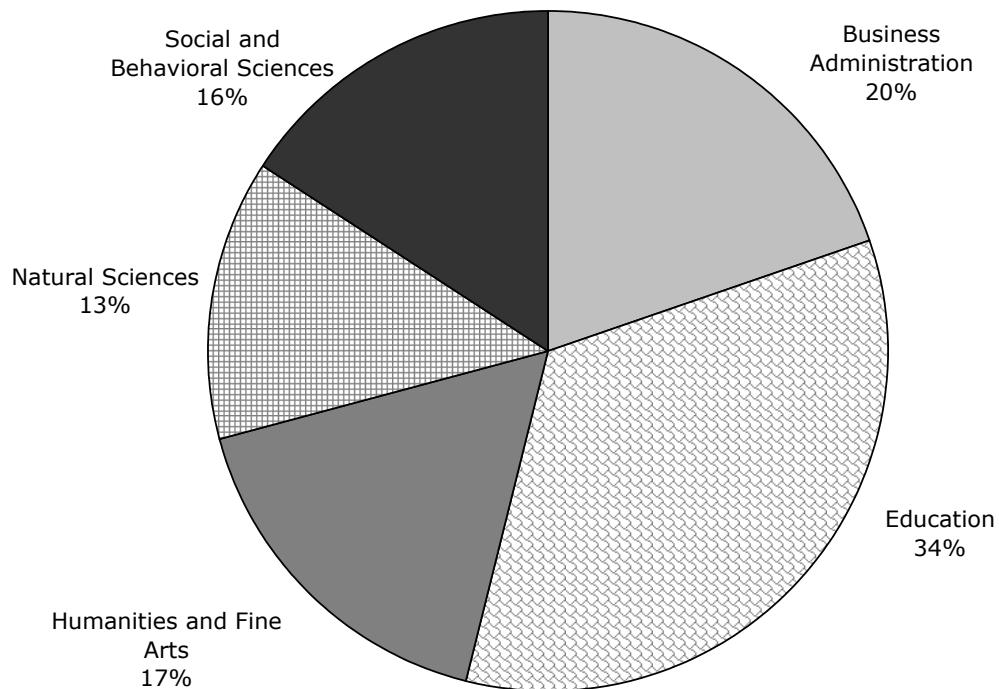
*Includes Alumni earning only Teaching Certificates Awarded pre-1960.

**Alumni having earned degrees in different colleges are counted in each college.

***As of September 2005

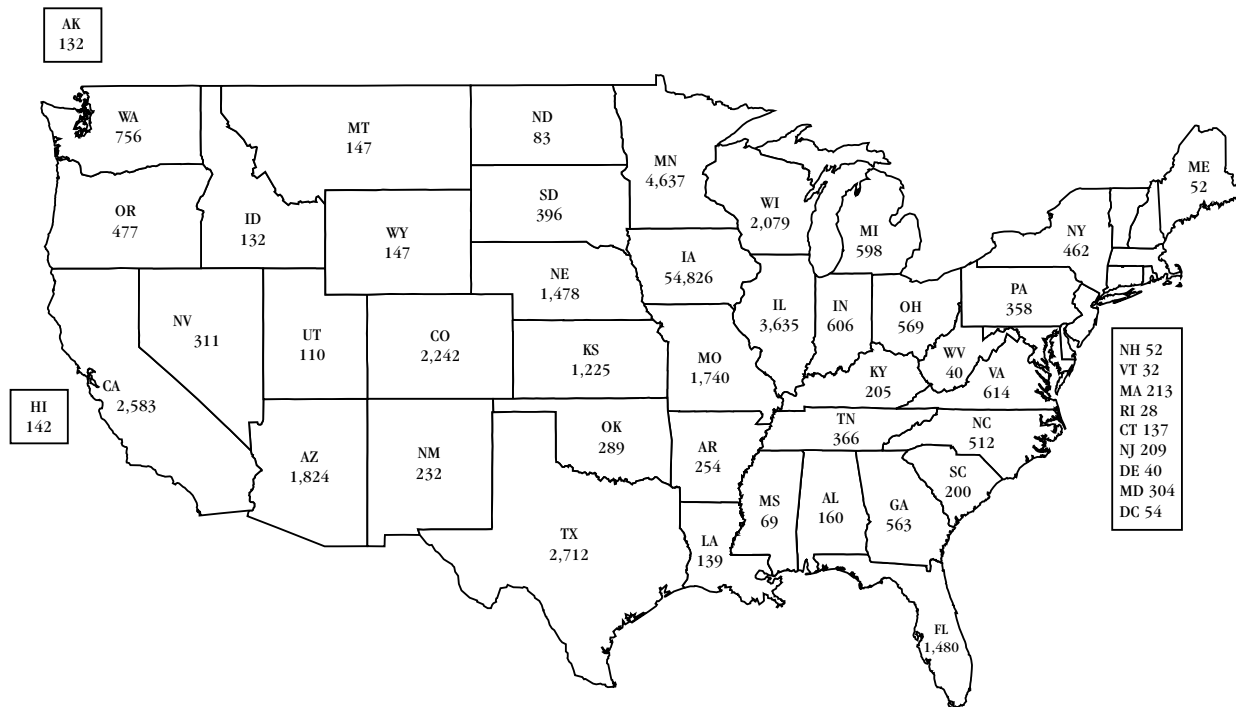


Total Living Alumni by College



Total Alumni = 93,683

Alumni by State



Source: Alumni Association



Post-Graduation Status of 2002-03 Bachelor's Degree Recipients



College	Graduates	No Information	Total Responding	Continuing Education	Employed		Seeking Employment	Not Seeking Employment
					In Iowa	Out of Iowa		
Business	589	63	526	35	211	91	75	114
Education	757	139	618	54	163	62	138	201
Humanities & Fine Arts	539	160	379	81	47	18	99	134
Natural Sciences	351	87	264	68	51	20	42	83
Social & Behavioral Sciences	508	176	332	83	30	24	67	128
General, Interdisciplinary & Special Programs	132	47	85	5	10	3	12	55
TOTAL	2,876	672	2,204	326	512	218	433	715
			(2,204 of 2,876)	(326 of 2,204)	(730 of 2,204)		(433 of 2,204)	(715 of 2,204)
			76.6%	14.8%	33.1%		19.6%	32.4%

56

Source: The Career Center

Method: Data was collected through a survey of graduates attending commencement exercises and follow-up telephone calls.

Post-Graduation Status of 2002-03 Graduate Degree Recipients

College	Graduates	No Information	Total Responding	Continuing Education	Employed		Seeking Employment	Not Seeking Employment
					In Iowa	Out of Iowa		
Business	56	12	44	1	28	2	3	10
Education	352	100	252	11	122	13	13	93
Humanities & Fine Arts	210	76	134	13	26	10	14	71
Natural Sciences	64	36	28	2	12	1	1	12
Social & Behavioral Sciences	44	22	22	2	2	2	3	13
TOTAL	726	246	480	29	190	28	34	199
			(408 of 480)	(29 of 480)	(218 of 480)		(34 of 480)	(199 of 480)
			66.1%	6.0%	45.4%		7.1%	41.5%

Source: The Career Center

Method: Data was collected through a survey of graduates attending commencement exercises and follow-up telephone calls.

Senior Exit Survey Results: Plans for Further Education*



58

College	Completed Survey		Accepted to a Graduate/Professional Program		Currently applying to Programs		Accepted to another undergraduate Program	
	N	%	N	%	N	%	N	%
TOTAL	348	100.0	169	100.0	157	100.0	22	100.0
Business Administration	51	14.7	28	16.6	14	8.9	9	40.9
Education	51	14.7	21	12.4	25	15.9	5	22.7
Humanities and Fine Arts	70	20.1	40	23.7	30	19.1	0	0.0
Natural Sciences	82	23.6	46	27.2	34	21.7	2	9.1
Social and Behavioral Sciences	94	27.0	34	20.1	54	34.4	6	27.3
			(169 of 348) 48.6%		(157 of 348) 45.1%		(22 of 348) 6.3%	

Source: Office of Institutional Research

*December 2004 and May 2005 Program Surveys

Graduate Program Survey Results: Plans for Further Education*

College	Completed Survey		Accepted to a Graduate/Professional Program		Currently applying to Programs		No Definite Plans for More Education Right Now	
	N	%	N	%	N	%	N	%
TOTAL	176	100.0	13	100.0	14	100.0	149	100.0
Business Administration	26	14.8	1	7.7	0	0.0	25	16.8
Education	68	38.6	3	23.1	5	35.7	60	40.3
Humanities and Fine Arts	49	27.8	6	46.2	8	57.1	35	23.5
Natural Sciences	19	10.8	3	23.1	0	0.0	16	10.7
Social and Behavioral Sciences	14	8.0	0	0.0	1	7.1	13	8.7
			(13 of 176)		(14 of 176)		(149 of 176)	
			7.4%		8.0%		84.6%	

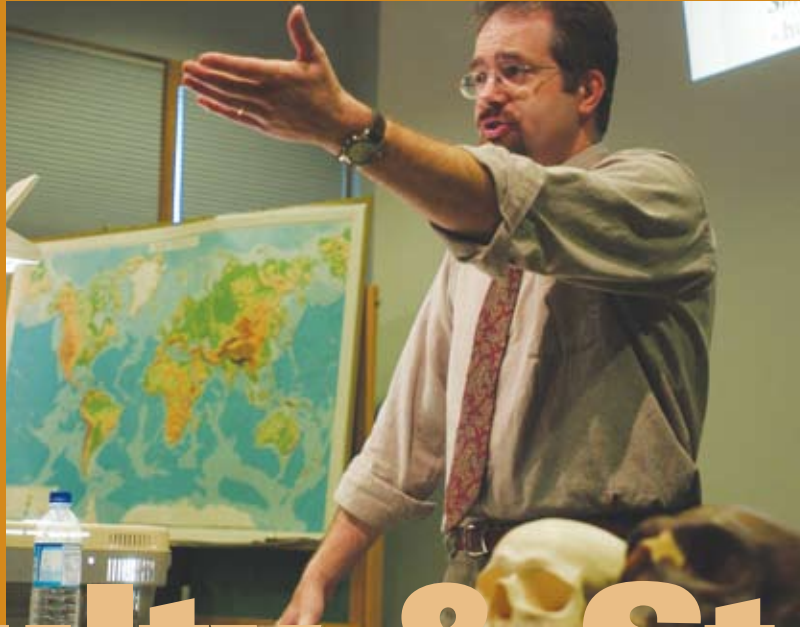
Source: Office of Institutional Research

*December 2004 and May 2005 Program Surveys





**University of
Northern
Iowa**



Faculty & Staff

Faculty & Staff

Fall 2005 Faculty Profile by College

	Total University	Business	Education	H&F Arts	Natural Sciences	S&B Sciences	Continuing Ed & Special Programs	Library
Faculty	829	84	237	212	143	132	1	20
Full-Time	641	61	184	156	113	108	0	19
Part-Time	188	23	53	56	30	24	1	1
Female	369	25	148	97	39	50	1	9
Male	460	59	89	115	104	82	0	11
American Indian/Alaskan Native	6	0	1	1	2	1	0	1
Asian/Pacific Islander	46	14	5	8	14	5	0	0
Black/African American	18	1	6	3	3	5	0	0
Hispanic/Latino	15	1	3	7	2	2	0	0
White	744	68	222	193	122	119	1	19
Professors	191	22	34	54	44	33	0	4
Associate Professors	215	21	47	56	39	42	0	10
Assistant Professors	147	15	35	31	29	33	0	4
Instructors/Lecturers	276	26	121	71	31	24	1	2
Tenured	446	47	117	111	82	74	0	15
Tenure-Track	144	11	40	30	26	33	0	4
Non Tenure-Track	239	26	80	71	35	25	1	1

*Excludes Deans and above



Faculty by Tenure Status



	2001		2002		2003		2004		2005	
	N	%	N	%	N	%	N	%	N	%
Faculty	852	100.0	842	100.0	799	100.0	784	100.0	829	100.0
Annual Percent Change		-1.0		-1.2		-5.1		-1.9		5.7
Full-Time	703	82.5	678	80.5	673	84.2	649	82.8	641	77.3
Part-Time	149	17.5	164	19.5	126	15.8	135	17.2	188	22.7
Tenured	434	100.0	424	100.0	437	100.0	445	100.0	446	100.0
Annual Percent Change		2.1		-2.3		3.1		1.8		0.2
Full-Time	419	96.5	408	96.2	427	97.7	433	97.3	419	93.9
Part-Time	15	3.5	16	3.8	10	2.3	12	2.7	27	6.1
Tenure-Track	178	100.0	177	100.0	177	100.0	142	100.0	144	100.0
Annual Percent Change		-6.8		-0.6		0.0		-19.8		1.4
Full-Time	178	100.0	177	100.0	175	98.9	142	100.0	143	99.3
Part-Time	0	0.0	0	0.0	2	1.1	0	0.0	1	0.7
Non Tenure-Track	240	100.0	241	100.0	185	100.0	197	100.0	239	100.0
Annual Percent Change		-2.0		0.4		-23.2		6.5		21.3
Full-Time	106	44.2	93	38.6	71	38.4	74	37.6	79	33.1
Part-Time	134	55.8	148	61.4	114	61.6	123	62.4	160	66.9

Source: Office of Institutional Research

*Excludes Deans and above

Faculty by Gender and Tenure Status

	2001		2002		2003		2004		2005	
	N	%	N	%	N	%	N	%	N	%
Faculty	852	100.0	842	100.0	799	100.0	784	100.0	829	100.0
Female	375	44.0	365	43.3	349	43.7	335	42.7	369	44.5
Male	477	56.0	477	56.7	450	56.3	449	57.3	460	55.5
Tenured	434	100.0	424	100.0	437	100.0	445	100.0	446	100.0
Female	151	34.8	150	35.4	154	35.2	159	35.7	166	37.2
Male	283	65.2	274	64.6	283	64.8	286	64.3	280	62.8
Tenure-Track	178	100.0	177	100.0	177	100.0	142	100.0	144	100.0
Female	85	47.8	83	46.9	85	48.0	69	48.6	70	48.6
Male	93	52.2	94	53.1	92	52.0	73	51.4	74	51.4
Non Tenure-Track	240	100.0	241	100.0	185	100.0	197	100.0	239	100.0
Female	139	57.9	132	54.8	110	59.5	107	54.3	133	55.6
Male	101	42.1	109	45.2	75	40.5	90	45.7	106	44.4

Source: Office of Institutional Research

*Excludes Deans and above

Faculty by Rank

	2001		2002		2003		2004		2005	
	N	%	N	%	N	%	N	%	N	%
Faculty	834	100.0	842	100.0	799	100.0	784	100.0	829	100.0
Professors	184	22.1	185	22.0	184	23.0	188	24.0	191	23.0
Associate Professors	206	24.7	199	23.6	211	26.4	219	27.9	215	25.9
Assistant Professors	182	21.8	178	21.1	179	22.4	146	18.6	147	17.7
Instructors/Lecturers	262	31.4	280	33.3	225	28.2	231	29.5	276	33.3
Tenured	434	100.0	424	100.0	437	100.0	445	100.0	446	100.0
Professors	180	41.5	180	42.5	180	41.2	184	41.3	187	41.9
Associate Professors	197	45.4	191	45.0	205	46.9	215	48.3	213	47.8
Assistant Professors	29	6.7	25	5.9	24	5.5	18	4.0	17	3.8
Instructors/Lecturers	28	6.5	28	6.6	28	6.4	28	6.3	29	6.5
Tenure-Track	178	100.0	177	100.0	177	100.0	142	92.3	144	100.0
Professors	0	0.0	0	0.0	0	0.0	0	0.0	0	0.0
Associate Professors	8	4.5	7	4.0	6	3.4	4	2.8	2	1.4
Assistant Professors	143	80.3	143	80.8	150	84.7	122	85.9	126	87.5
Instructors/Lecturers	27	15.2	27	15.3	21	11.9	16	3.6	16	11.1
Non Tenure-Track	222	100.0	241	56.8	185	100.0	197	100.0	239	100.0
Professors	4	1.8	5	1.2	4	2.2	4	2.0	4	1.7
Associate Professors	1	0.5	1	0.2	0	0.0	0	0.0	0	0.0
Assistant Professors	10	4.5	10	2.4	5	2.7	6	3.0	4	1.7
Instructors/Lecturers	207	93.2	225	53.1	176	95.1	187	94.9	231	96.7

Source: Office of Institutional Research

*Excludes Deans and above

Fall 2005 Faculty by College and Gender

College	Full-Time			Part-Time			Faculty	
	F	M	Total	F	M	Total	Total	%
Faculty	275	366	641	94	94	188	829	100.0
Tenured	156	263	419	10	17	27	446	53.8
Tenure-Track	70	73	143	0	1	1	144	17.4
Non Tenure-Track	49	30	79	84	76	160	239	28.8
Business Administration	18	43	61	7	16	23	84	100.0
Tenured	8	33	41	1	5	6	47	56.0
Tenure-Track	3	8	11	0	0	0	11	13.1
Non Tenure-Track	7	2	9	6	11	17	26	30.9
Education	114	70	184	34	19	53	237	100.0
Tenured	58	47	105	6	6	12	117	49.4
Tenure-Track	26	14	40	0	0	0	40	16.9
Non Tenure-Track	30	9	39	28	13	41	80	33.7
Humanities and Fine Arts	67	89	156	30	26	56	212	100.0
Tenured	47	62	109	1	1	2	111	52.4
Tenure-Track	14	16	30	0	0	0	30	14.2
Non Tenure-Track	6	11	17	29	25	54	71	33.4

Fall 2005 Faculty by College and Gender (Continued)



66

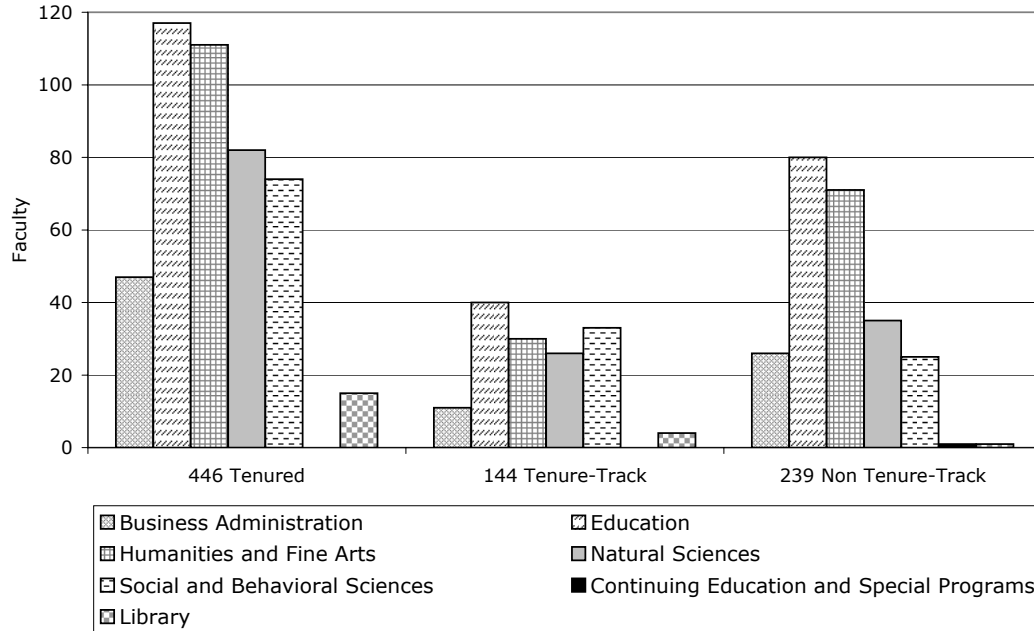
College	Full-Time			Part-Time			Faculty	
	F	M	Total	F	M	Total	Total	%
Natural Sciences	30	83	113	9	21	30	143	100.0
Tenured	17	62	79	0	3	3	82	57.3
Tenure-Track	9	17	26	0	0	0	26	18.2
Non Tenure-Track	4	4	8	9	18	27	35	24.5
Social and Behavioral Sciences	37	71	108	13	11	24	132	100.0
Tenured	18	53	71	2	1	3	74	56.1
Tenure-Track	17	15	32	0	1	1	33	25.0
Non Tenure-Track	2	3	5	11	9	20	25	18.9
Continuing Ed and Special Programs	0	0	0	1	0	1	1	100.0
Tenured	0	0	0	0	0	0	0	0.0
Tenure-Track	0	0	0	0	0	0	0	0.0
Non Tenure-Track	0	0	0	1	0	1	1	100.0
Library	9	10	19	0	1	1	20	100.0
Tenured	8	6	14	0	1	1	15	75.0
Tenure-Track	1	3	4	0	0	0	4	20.0
Non Tenure-Track	0	1	1	0	0	0	1	5.0

Source: Office of Institutional Research

*Excludes Deans and above

Faculty by College and Tenure*

Fall 2005
Full-Time and Part-Time Faculty



Source: Office of Institutional Research

*Excludes Deans and above

Faculty by College, Rank and Gender



College	2004							2005						
	Full-Time			Part-Time			Faculty Total	Full-Time			Part-Time			Faculty Total
	F	M	Total	F	M	Total		F	M	Total	F	M	Total	
Faculty	274	375	649	61	74	135	784	275	366	641	94	94	188	829
Professors	43	139	182	1	5	6	188	45	132	177	7	7	14	191
Associate Professors	91	123	214	0	5	5	219	86	120	206	4	5	9	215
Assistant Professors	67	75	142	1	3	4	146	66	75	141	2	4	6	147
Instructors/Lecturers	73	38	111	59	61	120	231	78	39	117	81	78	159	276
Business Administration	16	44	60	3	16	19	79	18	43	61	7	16	23	84
Professors	3	19	22	0	2	2	24	1	18	19	1	2	3	22
Associate Professors	4	14	18	0	2	2	20	6	14	20	0	1	1	21
Assistant Professors	3	9	12	0	2	2	14	4	9	13	0	2	2	15
Instructors/Lecturers	6	2	8	3	10	13	21	7	2	9	6	11	17	26
Education	117	76	193	19	12	31	224	114	70	184	34	19	53	237
Professors	15	21	36	0	0	0	36	12	19	31	3	0	3	34
Associate Professors	25	21	46	0	1	1	47	22	20	42	3	2	5	47
Assistant Professors	24	12	36	0	0	0	36	22	12	34	1	0	1	35
Instructors/Lecturers	53	22	75	19	11	30	105	58	19	77	27	17	44	121
Humanities and Fine Arts	63	88	151	22	19	41	192	67	89	156	30	26	56	212
Professors	15	30	45	1	1	2	47	20	32	52	1	1	2	54
Associate Professors	30	29	59	0	1	1	60	27	28	55	0	1	1	56
Assistant Professors	12	19	31	0	0	0	31	13	18	31	0	0	0	31
Instructors/Lecturers	6	10	16	21	17	38	54	7	11	18	29	24	53	71

Faculty by College, Rank and Gender (Continued)

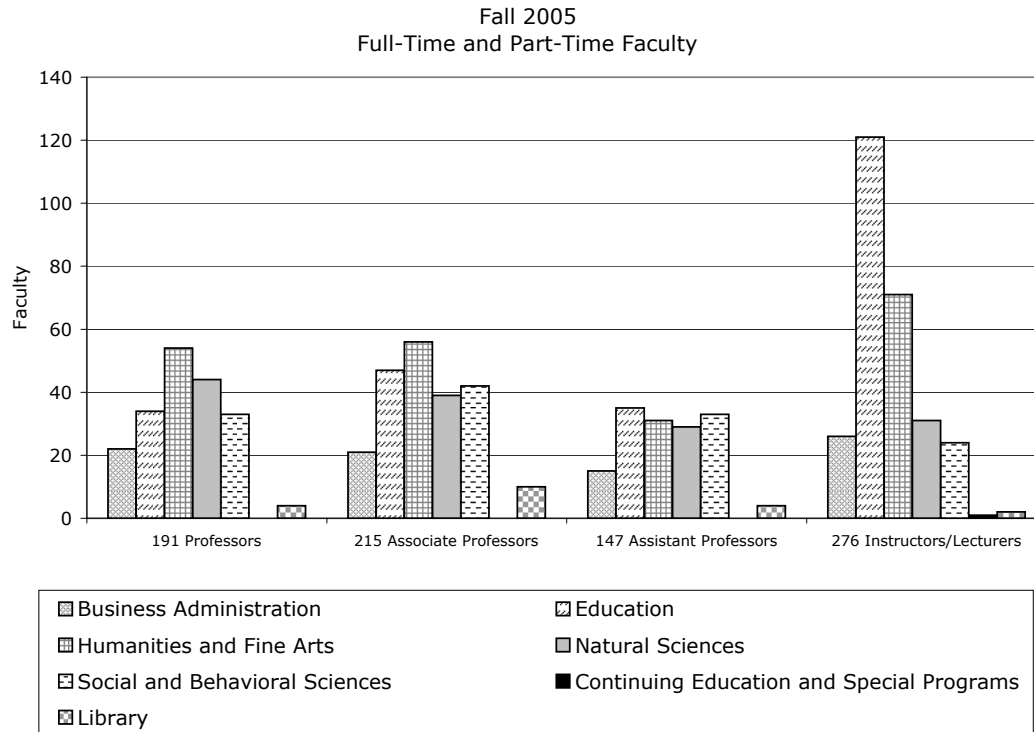
College	2004							2005						
	Full-Time			Part-Time			Faculty Total	Full-Time			Part-Time			Faculty Total
	F	M	Total	F	M	Total		F	M	Total	F	M	Total	
Natural Sciences	28	86	114	9	15	24	138	30	83	113	9	21	30	143
Professors	6	38	44	0	1	1	45	7	33	40	1	3	4	44
Associate Professors	10	31	41	0	0	0	41	10	29	39	0	0	0	39
Assistant Professors	7	14	21	1	1	2	23	9	18	27	1	1	2	29
Instructors/Lecturers	5	3	8	8	13	21	29	4	3	7	7	17	24	31
Social and Behavioral Sciences	40	72	112	8	11	19	131	37	71	108	13	11	24	132
Professors	3	28	31	0	1	1	32	4	27	31	1	1	2	33
Associate Professors	16	26	42	0	0	0	42	14	27	41	1	0	1	42
Assistant Professors	19	17	36	0	0	0	36	17	15	32	0	1	1	33
Instructors/Lecturers	2	1	3	8	10	18	21	2	2	4	11	9	20	24
Continuing Ed	1	0	1	0	0	0	1	0	0	0	1	0	1	1
Professors	0	0	0	0	0	0	0	0	0	0	0	0	0	0
Associate Professors	0	0	0	0	0	0	0	0	0	0	0	0	0	0
Assistant Professors	0	0	0	0	0	0	0	0	0	0	0	0	0	0
Instructors/Lecturers	1	0	1	0	0	0	1	0	0	0	1	0	1	1
Library	9	9	18	0	1	1	19	9	10	19	0	1	1	20
Professors	1	3	4	0	0	0	4	1	3	4	0	0	0	4
Associate Professors	6	2	8	0	1	1	9	7	2	9	0	1	1	10
Assistant Professors	2	4	6	0	0	0	6	1	3	4	0	0	0	4
Instructors/Lecturers	0	0	0	0	0	0	0	0	2	2	0	0	0	2

Source: Office of Institutional Research

*Excludes Deans and above



Faculty by College and Rank*



Source: Office of Institutional Research

*Excludes Deans and above

Minority Faculty By Race/Ethnicity*

Full-Time	2000	2001	2002	2003	2004	2005
Total	83	82	74	77	73	77
American Indian/Alaskan Native	7	6	5	5	6	4
Asian/Pacific Islander	31	35	33	38	35	42
Black/African American	25	21	18	18	18	18
Hispanic/Latino	20	20	18	16	14	13

Part-Time	2000	2001	2002	2003	2004	2005
Total	11	8	9	7	7	8
American Indian/Alaskan Native	0	2	1	0	0	2
Asian/Pacific Islander	6	2	6	3	5	4
Black/African American	3	3	2	3	1	0
Hispanic/Latino	2	1	0	1	1	2

Source: Office of Institutional Research

*Excludes Deans and above



UNI Workforce by Employment Categories

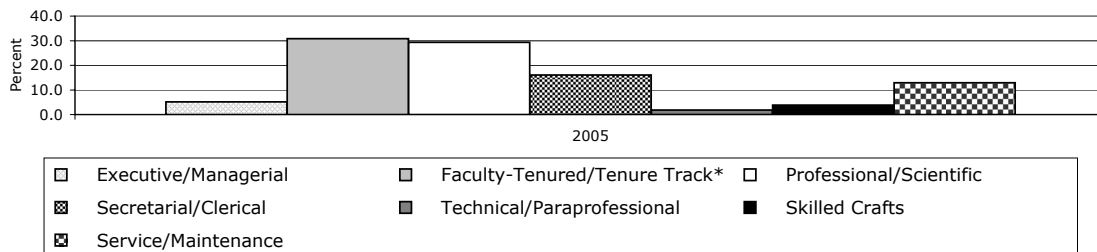


72

Categories	1999		2000		2001		2002		2003		2004		2005	
	N	%	N	%	N	%	N	%	N	%	N	%	N	%
Total Workforce	1,780	100.0	1,868	100.0	1,859	100.0	1,823	100.0	1,820	100.0	1,769	100.0	1,776	100.0
Annual Percent Change		2.5		4.9		-0.5		-1.9		-0.2		-2.8		0.4
Executive/Managerial	101	5.7	104	5.6	101	5.4	97	5.3	99	5.4	98	5.5	92	5.2
Faculty-Tenured/Tenure Track*	557	31.3	561	30.0	555	29.9	549	30.1	561	30.8	533	30.1	547	30.8
Professional/Scientific	451	25.3	508	27.2	511	27.5	504	27.7	513	28.2	509	28.8	521	29.3
Secretarial/Clerical	310	17.4	335	17.9	328	17.6	323	17.7	307	16.9	293	16.6	285	16.0
Technical/Paraprofessional	24	1.4	22	1.2	28	1.5	26	1.4	25	1.4	25	1.4	33	1.9
Skilled Crafts	89	5.0	86	4.6	85	4.6	85	4.7	77	4.2	78	4.4	68	3.8
Service/Maintenance	248	13.9	252	13.5	251	13.5	239	13.1	238	13.1	233	13.2	230	13.0

Source: Office of Human Resources

*Excludes some faculty with administrative appointments



UNI Workforce by Race/Ethnicity

Categories	2000		2001		2002		2003		2004		2005	
	N	%	N	%	N	%	N	%	N	%	N	%
Total Workforce	1,868	100.0	1,859	100.0	1,823	100.0	1,820	100.0	1,769	100.0	1,776	100.0
Annual Percent Change		4.9		-0.5		-1.9		-0.2		-2.8		0.4
American Indian/Alaskan Native	12	0.6	11	0.6	9	0.5	9	0.5	10	0.6	9	0.5
Asian/Pacific Islander	36	1.9	39	2.1	38	2.1	44	2.4	46	2.6	55	3.1
Black/African American	115	6.2	102	5.5	100	5.5	101	5.5	96	5.4	92	5.2
Hispanic/Latino	29	1.6	28	1.5	27	1.5	25	1.4	22	1.2	22	1.2
White	1,675	89.7	1,676	90.2	1,648	90.4	1,640	90.1	1,594	90.1	1,598	90.0
Unknown	1	0.1	3	0.2	1	0.1	1	0.1	1	0.1	0	0.0

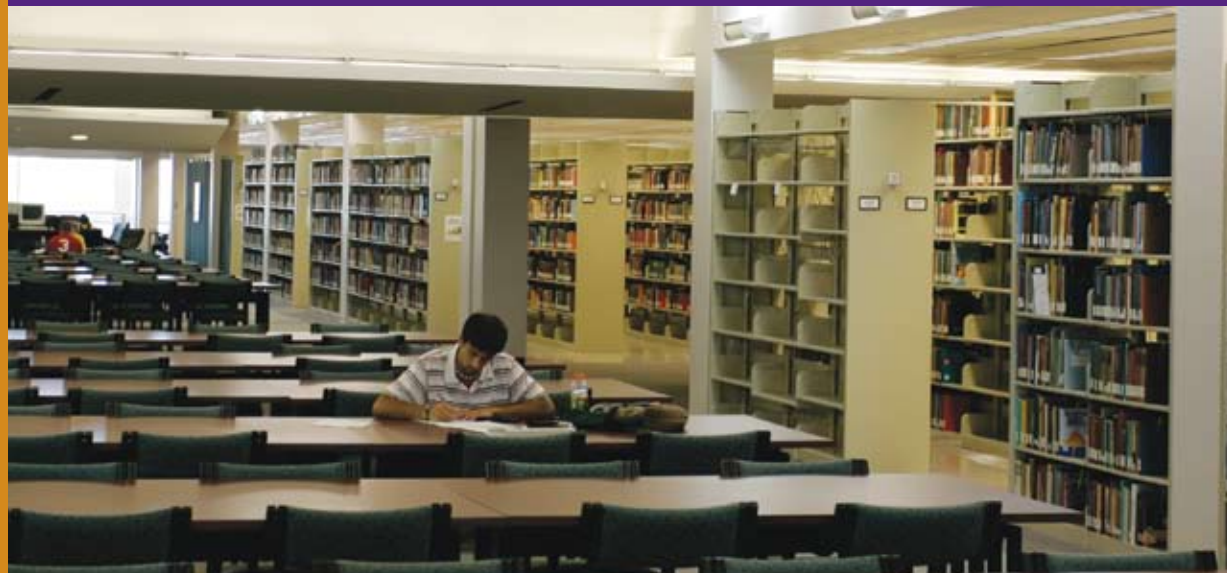
Source: Office of Human Resources

UNI Workforce by Employment Categories and Race/Ethnicity

Fall 2005	American Indian/ Alaskan Native	Asian/ Pacific Islander	Black/ African American	Hispanic/ Latino	White	Total
Total Workforce	9	55	92	22	1,598	1,776
Executive/Managerial	0	1	3	2	86	92
Faculty-Tenured/Tenure Track	5	40	16	11	475	547
Professional/Scientific	1	9	28	6	477	521
Secretarial/Clerical	0	0	13	1	271	285
Technical/Paraprofessional	0	0	5	0	28	33
Skilled Crafts	0	1	2	0	65	68
Service/Maintenance	3	4	25	2	196	230

Source: Office of Human Resources





Library

Library Statistics: 2000 - 2005

	2000	2001	2002	2003	2004	2005
PERSONNEL – FTE						
Library Faculty	23	22	22	22	21	20
Library Associates	6	7	6	7	7	9
Library Staff	33	32	32	30	28	27
Student Assistants	33	32	25	21	21	21
HOLDINGS/ACCESS						
Bound Volumes						
Books	708,184	724,186	734,793	750,309	760,547	771,176
Periodicals	159,160	162,194	166,553	170,937	175,360	178,954
Government Documents (all)						
Paper	274,278	275,904	270,729	269,465	265,562	264,715
Microform	295,792	300,708	304,332	301,149	293,980	298,331
CD/DVD/Floppy	2,411	2,616	2,784	2,898	2,942	3,058
Other	0	0	0	0	0	0
Subscriptions						
Periodicals (paper, w/o newspapers)	3,216	3,305	3,322	3,409	3,762	2,654
Periodicals (electronic, w/o newspapers)	-	-	-	-	-	1,219
Newspapers	52	53	50	51	48	37
Non-Periodical Continuations	3,408	3,313	3,255	2,691	2,566	2,469
Maps (sheets and folded)	40,627	40,737	40,866	40,637	40,668	40,965

Library Statistics: 2000 - 2005 (Continued)



76

	2000	2001	2002	2003	2004	2005
Audiovisuals						
Sound recordings	14,197	14,190	13,993	14,673	15,132	15,784
Films and Videotapes	1,998	2,458	2,927	3,441	3,799	4,162
Other nonprint materials	7,064	7,303	7,194	8,844	8,934	8,968
Microform Units (not govt. docs.)						
Microfilm	26,838	27,292	27,671	28,061	28,366	28,702
Microfiche	702,212	720,321	737,417	750,845	768,993	769,297
Microcards	11,826	11,668	11,668	12,438	15,098	17,072
Archives & Manuscripts (linear feet)	3,953	4,063	4,167	4,311	4,383	4,571
SERVICES						
Building Entrance Count	683,007	705,184	737,407	691,274	617,692	517,670
Circulation (first time loans)	262,932	231,066	239,050	237,510	217,305	184,900
Reference Transactions (all)	38,264	33,045	32,497	27,402	18,473	15,924
Interlibrary Loan						
Borrowed	7,947	9,135	8,249	7,727	6,437	5,368
Loaned	9,017	8,256	8,375	7,794	6,519	6,900
Library Instruction						
Classes	341	373	350	376	239	273
Persons served	6,083	7,727	7,746	7,347	5,716	6,067
Document Delivery						
On Campus	-	-	75	47	18	5
Off Campus	-	-	1,059	924	424	673

Source: The Rod Library



Budget & Finance

Budget & Finance



Statement of Revenues, Expenses and Changes In Net Assets, 2002-2005*

	2002	2003	2004	2005
OPERATING REVENUES				
Tuition & Fees	\$47,695,133	\$54,885,895	\$62,130,476	\$65,569,360
Less Scholarship Allowance	<u>-10,360,867</u>	<u>-12,053,890</u>	<u>-13,052,007</u>	<u>-13,688,964</u>
Net Tuition & Fees	\$37,334,266	\$42,832,005	\$49,078,469	\$51,880,396
Receipts from Other Entities	2,823,088	852,445	991,345	82,965
Grants and Contracts	28,149,689	27,838,504	29,123,374	30,743,893
Sales, Rents and Services	5,350,853	6,518,849	6,821,839	7,313,541
Miscellaneous	811,011	2,176,483	2,279,986	784,868
Auxiliary Enterprises	<u>34,576,672</u>	<u>36,927,912</u>	<u>36,856,387</u>	<u>38,523,713</u>
Total Operating Revenues	<u>\$109,045,579</u>	<u>\$117,146,198</u>	<u>\$125,151,400</u>	<u>\$129,329,376</u>
OPERATING EXPENSES				
Instruction	\$58,352,384	\$62,067,503	\$64,082,106	\$64,417,699
Research	2,961,228	2,512,582	2,567,947	2,518,265
Public Service	20,394,259	18,381,946	19,978,192	22,165,366
Academic Support	20,845,767	20,658,691	19,793,658	19,401,042
Student Services	5,914,409	6,067,391	6,130,096	6,459,570
Institutional Support	20,211,312	22,716,306	22,827,463	23,561,674
Operation and Maintenance of Plant	25,292,575	19,716,928	20,471,446	16,740,161
Scholarships and Fellowships	5,922,198	6,562,983	6,414,569	5,454,063
Depreciation	12,631,002	12,511,725	12,833,137	12,646,439
Loan Cancellations and Write-offs	790,100	484,390	479,002	471,002
Auxiliary Enterprises	<u>33,382,483</u>	<u>34,275,029</u>	<u>36,486,127</u>	<u>38,219,649</u>
Total Operating Expenses	<u>\$206,697,717</u>	<u>\$205,955,474</u>	<u>\$212,063,743</u>	<u>\$212,054,930</u>
Operating (Loss)	(97,652,138)	(88,809,276)	(86,912,343)	(82,725,554)

Statement of Revenues, Expenses and Changes In Net Assets, 2002-2005* (Continued)



	2002	2003	2004	2005
NON-OPERATING REVENUES (EXPENSES)				
State Appropriations	\$85,102,778	\$83,106,612	\$79,256,054	\$79,128,080
Investment Income	1,774,856	2,847,144	869,417	1,887,657
Gifts, Grants and Contracts	2,782,051	1,492,118	2,212,714	2,385,758
Interest Expense	-4,503,738	-5,179,863	-5,179,283	-5,140,767
Principal Demutualization	12,816,904	-	-	-
Principal Demutualization Remitted to State	-5,936,000	-	-	-
Amortization Expense	-53,935	-101,239	-204,602	-65,720
Net Non-Operating Revenue (Expenses)	<u>\$91,982,916</u>	<u>\$82,164,772</u>	<u>\$76,954,300</u>	<u>\$78,195,008</u>
(Loss) Before Other Revenues	<u>-\$5,669,222</u>	<u>-\$6,644,504</u>	<u>-\$9,958,043</u>	<u>-\$4,530,546</u>
State Appropriations – Capital Projects	\$16,542,463	\$20,411,720	\$15,439,528	\$14,307,549
Capital Contributions and Grants	484,788	945,584	15,850,868	4,005,674
Other Revenue (Expense)	-	-55,626	797,525	265,251
Total Other Revenues	<u>\$17,027,251</u>	<u>\$21,301,678</u>	<u>\$32,087,921</u>	<u>\$18,578,474</u>
Change in Net Assets	<u>\$11,358,029</u>	<u>\$14,657,174</u>	<u>\$22,129,878</u>	<u>\$14,047,928</u>
NET ASSETS				
Total Net Assets – July 1	<u>\$170,969,315</u>	<u>\$182,327,344</u>	<u>\$196,984,518</u>	<u>\$219,114,396</u>
Total Net Assets – June 30	<u>\$182,327,344</u>	<u>\$196,984,518</u>	<u>\$219,114,396</u>	<u>\$233,162,324</u>

Source: Financial Accounting and Reporting Services

*Fiscal year runs July 1 through June 30.

NOTE: Definition of Statement of Revenues, Expenses, and Changes In Net Assets has been changed since fiscal year 2002 in accordance with the new Governmental Accounting Standards Board (GASB) Statements No. 34 and 35.

Funds, Revenues and Expenditures, Fiscal years 1998-2001

	1998	1999	2000	2001
REVENUES				
Tuition and Fees	\$35,484,903	\$37,447,252	\$39,829,092	\$42,963,437
Federal Appropriations	1,983,741	1,813,658	2,416,722	3,963,945
State Appropriations	84,685,875	89,003,469	93,569,079	97,981,604
Federal Grants and Contracts	11,652,103	12,200,123	13,714,266	14,767,225
State Grants and Contracts	3,239,499	3,580,811	4,024,559	4,440,916
Local Grants and Contracts	176,612	222,522	274,273	135,690
Other Gifts, Grants and Contracts	1,917,394	2,773,133	4,746,184	2,459,125
Investment and Endowment Income	1,528,331	1,289,997	1,366,541	1,728,391
Sales and Service of Educational Activities	6,721,529	7,030,245	7,043,500	7,234,903
Sales and Service of Auxiliary Enterprises	25,943,362	26,786,380	29,491,785	35,821,898
Total Current Revenues	\$173,333,349	\$182,147,590	\$196,476,001	\$211,497,134
EXPENDITURES AND MANDATORY TRANSFER				
Educational and General				
Instruction	\$50,051,575	\$53,378,773	\$57,895,283	\$60,041,377
Research	2,347,516	2,149,601	2,536,650	2,629,161
Public Service	15,175,803	16,571,190	17,453,489	19,736,512
Academic Support	21,197,428	22,040,995	23,751,116	25,900,240
Student Services	5,245,084	4,765,311	5,327,322	5,790,606
Institutional Support	14,048,666	16,983,107	15,042,093	16,473,844
Operation and Maintenance of Plant	12,807,144	15,661,262	14,292,226	14,838,080
Scholarship and Fellowship	12,448,197	13,711,752	13,996,030	14,626,520
Educational and General Expenditures	\$133,321,413	\$145,261,991	\$150,294,209	\$160,036,340
Mandatory Transfer				
Principal and Interest	\$5,359,202	\$5,615,969	\$5,504,517	\$5,766,370
Federal Perkins Loan Fund Matching Grant	133,718	116,837	85,601	83,669
Federal SEOG Program Matching Grant				
Total Educational and General	\$138,814,333	\$150,994,797	\$155,884,327	\$165,886,379

Funds, Revenues and Expenditures, Fiscal Years 1998-2001 (Continued)



80

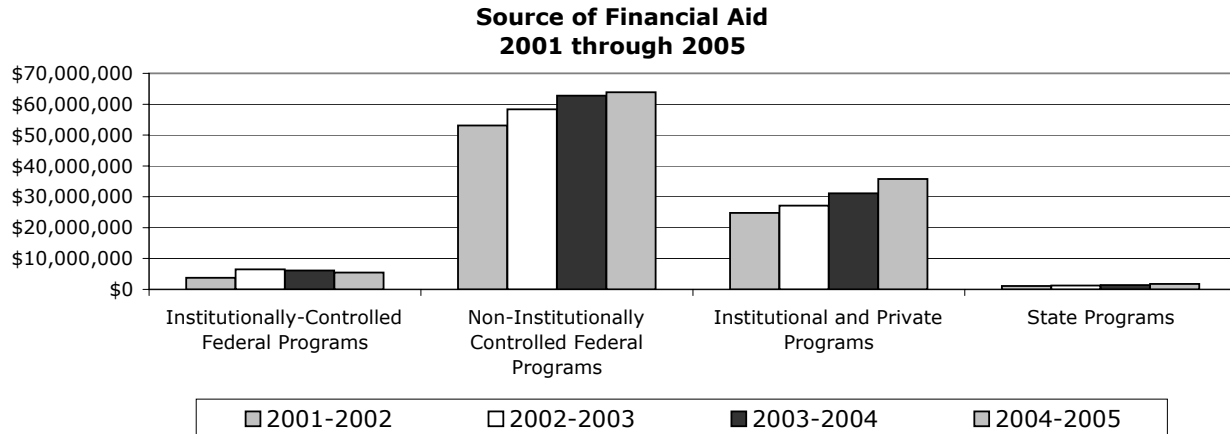
	1998	1999	2000	2001
Auxiliary Enterprises				
Expenditures	\$25,564,046	\$26,950,228	\$30,229,193	\$35,010,637
Mandatory Transfers				
Principal and Interest	1,556,175	1,542,548	1,898,452	2,882,036
Renewals and Replacements	250,000	250,000	250,000	250,000
Total Auxiliary Enterprises	\$27,370,221	\$28,742,776	\$32,377,645	\$38,142,673
Total Expenditures and Mandatory transfers	\$166,184,554	\$179,737,573	\$188,261,972	\$204,029,052
OTHER TRANSFERS AND ADDITIONS				
Excess of Restricted Receipts Over Transfer	\$370,722	\$77,926	\$178,359	(\$450,941)
Nonmandatory, Net	(4,847,930)	(4,797,533)	(4,790,296)	(6,073,553)
Total Other Transfers and Additions	(\$4,477,208)	(\$4,719,607)	(\$4,611,937)	(\$6,524,494)
NET INCREASE (DECREASE) IN FUND BALANCE	\$2,671,587	(\$2,309,590)	\$3,602,092	\$943,588

Source: Financial Accounting and Reporting Services

Financial Aid Programs by Source of Aid

	2001-2002	2002-2003	2003-2004	2004-2005	Percent Change 2003-2004 to 2004-2005
TOTAL	\$82,768,941	\$93,232,721	\$101,459,769	\$104,165,681	2.7
Institutionally-Controlled Federal Programs	\$3,785,817	\$6,521,113	\$6,146,645	\$5,443,155	-11.4
Non-Institutionally Controlled Federal	\$53,109,000	\$58,338,124	\$62,785,280	\$63,849,517	1.7
Institutional and Private Programs	\$24,755,710	\$27,134,502	\$31,126,772	\$33,073,035	6.3
State Programs	\$1,118,414	\$1,238,982	\$1,401,072	\$1,799,974	28.5

Source: Office of Enrollment Services



Student Financial Aid Programs

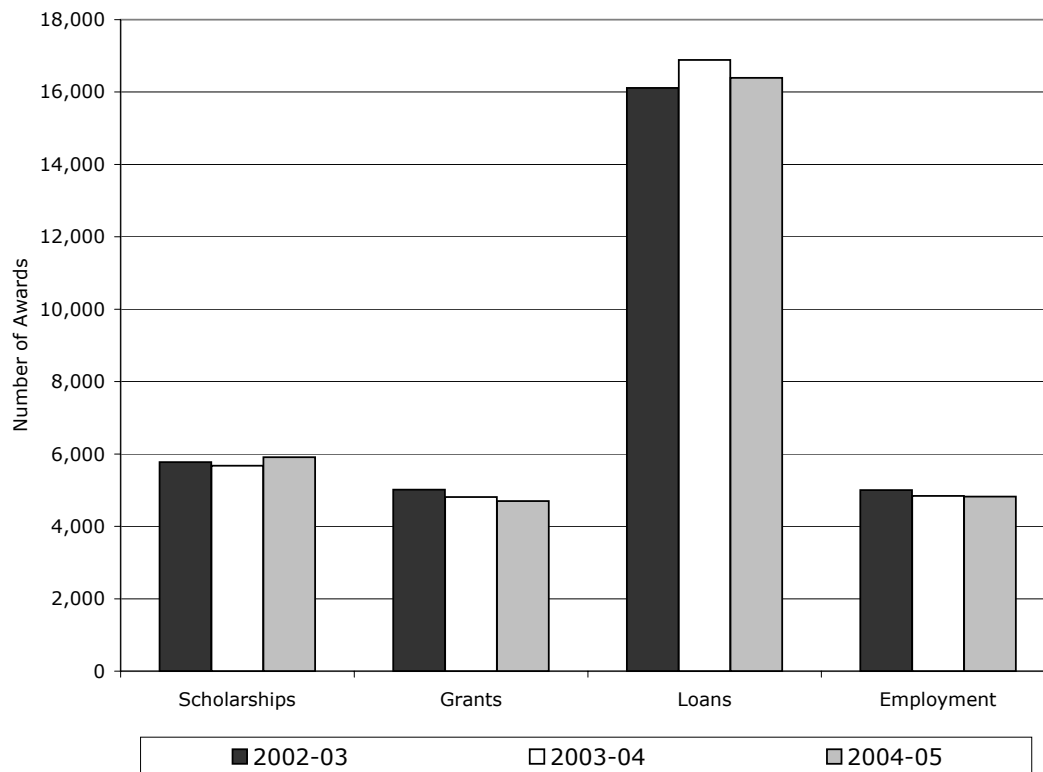


82

	2003-2004			2004-2005		
	Number of Awards	Value of Awards	Mean Award	Number of Awards	Value of Awards	Mean Award
TOTAL	32,218	\$101,459,769	\$3,149	31,822	\$104,165,681	\$3,273
Scholarships	5,676	\$12,048,415	\$2,123	5,910	\$12,529,029	\$2,120
Institutional Need Based Scholarships	2,274	3,853,659	1,695	2,418	3,228,608	1,335
Institutional Academic and Talent Scholarships	1,137	4,830,673	4,249	1,409	6,017,277	4,271
Federal Graduate Fellowships/Assistantships/ Traineeships	50	245,324	4,906	35	189,102	5,403
Bureau of Indian Affairs	1	3,000	3,000	1	2,000	2,000
Corporate/Private Scholarships	2,104	3,071,959	1,460	1,951	3,054,242	1,565
State of Iowa Scholarships	110	43,800	398	96	37,800	394
Grants	4,813	\$10,374,409	\$2,155	4,697	\$10,323,340	\$2,198
Federal Pell Grant	3,177	7,488,437	2,357	2,904	6,997,885	2,410
Other Federal Grant/Scholarship Programs	427	1,250,963	2,930	423	1,213,601	2,869
Supplemental Education Opportunity Grant	623	554,103	889	702	634,520	904
IMAGES Grant	183	336,573	1,839	182	333,559	1,833
Iowa Grant	122	103,629	849	163	134,922	828
Vocational Rehabilitation	162	361,837	2,234	154	361,986	2,351
Commission for the Blind	6	23,500	3,917	7	39,014	5,573
ROTC	13	60,384	4,645	7	34,660	4,951
Other State Grants	20	27,520	1,376	49	72,461	1,479
National Guard	80	167,463	2,093	106	500,732	4,724
Loans	16,885	\$69,158,789	\$4,096	16,395	\$71,096,106	\$4,336
State Loans	122	336,750	2,760	114	319,500	2,803
Federal Perkins	1,711	3,107,797	1,816	1,446	2,520,569	1,743
Direct Loans	13,165	55,233,459	4,195	13,018	56,814,972	4,364
Alternative Loans	1,887	10,480,783	5,554	1,817	11,441,065	6,297
Employment	4,844	\$9,878,156	\$8,385	4,820	\$10,217,206	\$2,120
Federal Work Study	658	988,458	1,502	574	885,363	1,542
Iowa Work Study	0	0	0	0	0	0
Graduate Teaching, Research Assistantships	359	1,806,479	5,032	365	2,007,407	5,500
UNI Employment	3,827	7,083,219	1,851	3,881	7,324,436	1,887

Source: Office of Enrollment Services

Student Financial Aid Awarded



Source: Office of Enrollment Services

Graduate Student Financial Aid



84

	2002-2003		2003-2004		2004-2005	
	N	%	N	%	N	%
Enrollment	1,644		1,667		1,604	
Annual Percent Change				1.4		-3.8
Residents	1,277	77.7	1,295	77.7	1,277	79.6
Non-Residents	367	22.3	372	22.3	327	20.4
Number Receiving Aid	1,062	64.6	1,148	68.9	1,206	75.2
Annual Percent Change				8.1		5.1
Residents	819	77.1	840	73.2	909	75.4
Non-Residents	243	22.9	308	26.8	297	24.6
Amount Received	\$ 10,017,917		\$12,326,595		\$14,158,733	
Annual Percent Change				23.0		14.9
Residents	\$7,235,855	72.2	\$8,899,764	72.2	\$10,117,191	71.5
Non-Residents	\$2,782,062	27.8	\$3,426,831	27.8	\$4,041,542	28.5

Source: Office of Enrollment Services

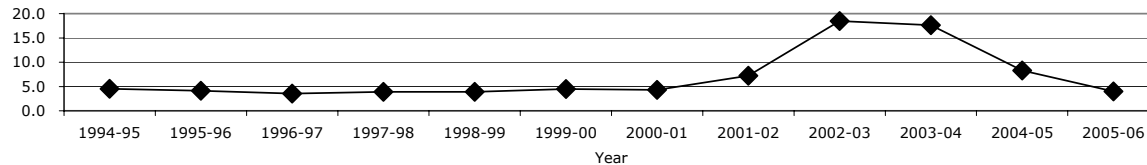
Full-Time Undergraduate Student Tuition and Fees*

Academic Year	Academic Services	Activity	Athletics	Computing/ Technology	Facilities	General Student Services	Health Services	Health Facility	Misc.	Total Mandatory Fees	UG Tuition	Total Tuition & Mandatory Fees
1993-94				\$80			\$80			\$160	\$2,192	\$2,352
1994-95				\$84			\$80			\$164	\$2,291	\$2,455
1995-96				\$88			\$84			\$172	\$2,386	\$2,558
1996-97				\$92			\$88			\$180	\$2,470	\$2,650
1997-98				\$96			\$90			\$186	\$2,566	\$2,752
1998-99				\$100			\$94			\$194	\$2,666	\$2,860
1999-00				\$104			\$98			\$202	\$2,786	\$2,988
2000-01				\$122			\$102			\$224	\$2,906	\$3,130
2001-02		\$92		\$126			\$106			\$324	\$3,116	\$3,440
2002-03		\$174		\$140			\$112			\$426	\$3,692	\$4,118
2003-04				\$150	\$180	\$102	\$116	\$26		\$574	\$4,342	\$4,916
2004-05				\$165	\$180	\$190	\$124	\$26		\$685	\$4,702	\$5,387
2005-06				\$116	\$198	\$222	\$144	\$32		\$712	\$4,890	\$5,602

Source: Office of the Registrar

*Resident Student

**Undergraduate Tuition
Annual Percent Change**



Full-Time Graduate Student Tuition and Fees*



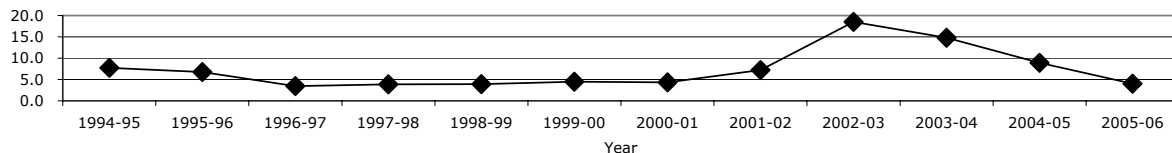
86

Academic Year	Academic Services	Activity	Athletics	Computing/ Technology	Facilities	General Student Services	Health Services	Health Facility	Misc.	Total Mandatory Fees	Grad Tuition	Total Tuition & Mandatory Fees
1993-94				\$80			\$80			\$160	\$2,464	\$2,624
1994-95				\$84			\$80			\$164	\$2,655	\$2,819
1995-96				\$88			\$84			\$172	\$2,834	\$3,006
1996-97				\$92			\$88			\$180	\$2,932	\$3,112
1997-98				\$96			\$90			\$186	\$3,046	\$3,232
1998-99				\$100			\$94			\$194	\$3,166	\$3,360
1999-00				\$104			\$98			\$202	\$3,308	\$3,510
2000-01				\$122			\$102			\$224	\$3,452	\$3,676
2001-02		\$92		\$126			\$106			\$324	\$3,702	\$4,026
2002-03		\$174		\$140			\$112			\$426	\$4,388	\$4,814
2003-04				\$150	\$180	\$102	\$116	\$26		\$574	\$5,038	\$5,612
2004-05				\$165	\$180	\$190	\$124	\$26		\$685	\$5,488	\$6,173
2005-06				\$116	\$198	\$222	\$144	\$32		\$712	\$5,708	\$6,420

Source: Office of the Registrar

*Resident Student

**Graduate Tuition
Annual Percent Change**

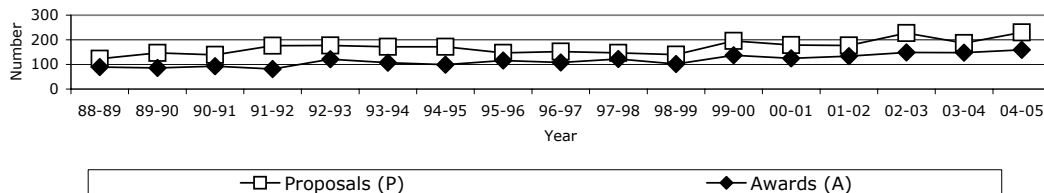


Sponsored Project Proposals and Awards as Reported to the Board of Regents*

Fiscal Year	Proposals (P)		Awards (A)		% of Proposals Funded (A/P)	% of Total Dollars Funded (A/P)
	N	Amount (\$)	N	Amount (\$)		
1988-89	123	8,727,303	89	3,592,373	72	41
1989-90	147	8,799,839	86	3,868,238	59	44
1990-91	139	12,391,770	93	4,286,672	67	35
1991-92	176	21,518,651	81	10,321,825	46	48
1992-93	177	18,972,341	121	9,677,200	68	51
1993-94	172	35,429,954	107	9,971,394	62	28
1994-95	172	19,935,167	99	11,795,517	58	59
1995-96	147	18,154,560	116	10,501,022	79	58
1996-97	152	18,746,106	108	10,581,134	71	56
1997-98	147	19,464,620	122	11,930,516	83	61
1998-99	140	19,228,031	102	10,148,015	73	53
1999-00	196	31,533,321	137	18,149,087	70	58
2000-01	179	30,431,299	125	19,444,113	73	64
2001-02	177	28,163,358	134	20,721,442	76	74
2002-03	227	32,701,941	149	18,071,093	66	55
2003-04	187	37,801,214	148	23,735,528	79	63
2004-05	230	35,337,699	159	24,783,909	69	70

Source: The Graduate College

*Excluding Student Financial Aid





Academic Departments

**Academic
Departments**

Faculty by Department and Rank*

College/Department	Professor		Associate Professor		Assistant Professor		Instructor/ Lecturer		Total	
	2004	2005	2004	2005	2004	2005	2004	2005	2004	2005
Total Faculty	188	191	219	215	146	147	231	276	784	829
Business Administration	24	22	20	21	14	15	21	26	79	84
Accounting	4	2	2	4	5	5	2	4	13	15
Economics	4	4	4	4	3	3	2	3	13	14
Finance	4	4	2	2	2	2	3	4	11	12
Management	9	9	9	8	2	2	13	14	33	33
Marketing	3	3	3	3	2	3	1	1	9	10
Education	36	34	47	47	36	35	105	121	224	237
Curriculum and Instruction	1	8	1	12	2	8	2	14	6	42
Educational Leadership	3	3	4	3	3	4	4	6	14	16
Educational Psychology and Foundations	3	3	12	12	7	7	4	4	26	26
Health, Physical Education and Leisure Services	14	14	9	10	10	12	19	19	52	55
Special Education	6	5	3	3	3	2	4	4	16	14
Teaching	9	1	15	5	11	1	29	27	64	34
Price Lab. School	0	0	3	2	0	1	43	47	46	50
Humanities and Fine Arts	47	54	60	56	31	31	54	71	192	212
Art	9	10	4	4	3	3	5	3	21	20
Communication Studies	8	9	13	11	2	3	10	14	33	37
Communicative Disorders	3	3	2	2	1	1	5	7	11	13
English Language and Literature	7	9	14	12	8	8	9	16	38	45
Modern Languages	3	4	7	7	4	4	5	4	19	19
School of Music	10	12	8	9	9	8	15	22	42	51
Philosophy and Religion	4	3	7	7	3	3	4	4	18	17
Theatre	3	4	5	4	1	1	1	1	10	10

Faculty by Department and Rank* (Continued)



College/Department	Professor		Associate Professor		Assistant Professor		Instructor/ Lecturer		Total	
	2004	2005	2004	2005	2004	2005	2004	2005	2004	2005
Natural Sciences	45	44	41	39	23	29	29	31	138	143
Biology	12	12	11	11	5	6	8	7	36	36
Chemistry	7	6	4	4	4	5	1	2	16	17
Computer Science	2	2	5	5	1	2	1	2	9	11
Earth Science	5	5	4	4	0	0	2	3	11	12
Industrial Technology	8	7	3	3	7	7	9	10	27	27
Mathematics	8	8	9	9	5	7	7	6	29	30
Physics	3	4	5	3	1	2	1	1	10	10
Social and Behavioral Sciences	32	33	42	42	36	33	21	24	131	132
Design, Family and Consumer Sciences	1	1	4	5	6	4	5	7	16	17
Geography	4	3	4	5	1	1	2	3	11	12
History	5	6	13	13	4	4	4	4	26	27
Political Science	3	5	5	4	5	5	3	3	16	17
Psychology	6	6	6	6	9	8	2	1	23	21
Social Work	6	6	4	4	4	2	2	3	16	15
Sociology, Anthropology and Criminology	7	6	6	5	7	9	3	3	23	23
Other	4	4	9	10	6	4	1	3	20	21
Continuing Education and Special Programs	0	0	0	0	0	0	1	1	1	1
Library	4	4	9	10	6	4	0	2	19	20

Source: Office of Institutional Research

*Excludes Deans and above

Faculty by Department and Tenure*

College/Department	Tenured		Tenure-Track		Non Tenure-Track		Total	
	2004	2005	2004	2005	2004	2005	2004	2005
Total Faculty	445	446	142	144	197	239	784	829
Business Administration	46	47	11	11	22	26	79	84
Accounting	9	9	2	2	2	4	13	15
Economics	8	8	2	3	3	3	13	14
Finance	6	6	2	2	3	4	11	12
Management	17	17	3	2	13	14	33	33
Marketing	6	7	2	2	1	1	9	10
Education	117	117	41	40	66	80	224	237
Curriculum and Instruction	4	27	0	6	2	9	6	42
Educational Leadership	7	6	3	5	4	5	14	16
Educational Psychology and Foundations	18	18	4	4	4	4	26	26
Health, Physical Education and Leisure	25	26	10	11	17	18	52	55
Special Education	9	8	2	2	5	4	16	14
Teaching	36	13	13	3	15	18	64	34
Price Lab. School	18	19	9	9	19	22	46	50
Humanities and Fine Arts	109	111	29	30	54	71	192	212
Art	13	14	3	4	5	2	21	20
Communication Studies	21	20	2	3	10	14	33	37
Communicative Disorders	5	5	1	1	5	7	11	13
English Language and Literature	22	22	7	7	9	16	38	45
Modern Languages	10	11	4	4	5	4	19	19
School of Music	20	21	8	7	14	23	42	51
Philosophy and Religion	10	10	3	3	5	4	18	17
Theatre	8	8	1	1	1	1	10	10

Faculty by Department and Tenure* (Continued)



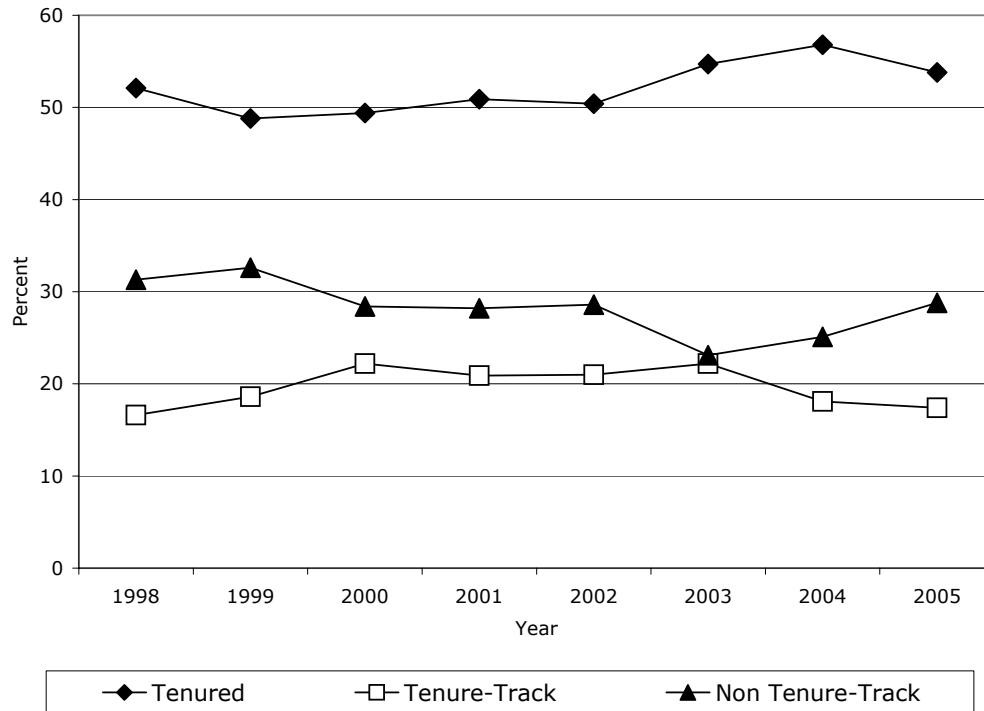
92

College/Department	Tenured		Tenure-Track		Non Tenure-Track		Total	
	2004	2005	2004	2005	2004	2005	2004	2005
Natural Sciences	85	82	22	26	31	35	138	143
Biology	23	23	5	6	8	7	36	36
Chemistry	11	11	2	3	3	3	16	17
Computer Science	7	7	1	2	1	2	9	11
Earth Science	9	9	0	0	2	3	11	12
Industrial Technology	10	9	8	8	9	10	27	27
Mathematics	18	16	5	6	6	8	29	30
Physics	7	7	1	1	2	2	10	10
Social and Behavioral Sciences	74	74	34	33	23	25	131	132
Design, Family and Consumer Sciences	6	7	5	3	5	7	16	17
Geography	8	8	1	1	2	3	11	12
History	18	19	4	4	4	4	26	27
Political Science	8	9	5	5	3	3	16	17
Psychology	12	12	8	8	3	1	23	21
Social Work	9	8	4	3	3	4	16	15
Sociology, Anthropology and Criminology	13	11	7	9	3	3	23	23
Other	14	15	5	4	1	2	20	21
Continuing Education and Special Programs	0	0	0	0	1	1	1	1
Library	14	15	5	4	0	1	19	20

Source: Office of Institutional Research

*Excludes Deans and above

Faculty Tenure Status*



Source: Office of Institutional Research

*Excludes Deans and above

Fall 2005 Faculty by Department and Gender*



College/Department	Full-Time			Part-Time			Total Faculty
	Female	Male	Total	Female	Male	Total	
Total Faculty	275	366	641	94	94	188	829
Business Administration	18	43	61	7	16	23	84
Accounting	3	6	9	1	5	6	15
Economics	3	10	13	1	0	1	14
Finance	1	8	9	1	2	3	12
Management	9	12	21	3	9	12	33
Marketing	2	7	9	1	0	1	10
Education	114	70	184	34	19	53	237
Curriculum and Instruction	23	13	36	5	1	6	42
Educational Leadership	4	6	10	5	1	6	16
Educational Psychology and Foundations	10	11	21	2	3	5	26
Health, Physical Education and Leisure	24	22	46	5	4	9	55
Special Education	6	4	10	3	1	4	14
Teaching	16	5	21	9	4	13	34
Price Lab. School	31	9	40	5	5	10	50
Humanities and Fine Arts	67	89	156	30	26	56	212
Art	6	12	18	1	1	2	20
Communication Studies	17	10	27	5	5	10	37
Communicative Disorders	3	5	8	4	1	5	13
English Language and Literature	13	18	31	6	8	14	45
Modern Languages	10	5	15	2	2	4	19
School of Music	9	25	34	11	6	17	51
Philosophy and Religion	5	9	14	0	3	3	17
Theatre	4	5	9	1	0	1	10

Fall 2005 Faculty by Department and Gender* (Continued)

College/Department	Full-Time			Part-Time			Total Faculty
	Female	Male	Total	Female	Male	Total	
Natural Sciences	30	83	113	9	21	30	143
Biology	14	16	30	3	3	6	36
Chemistry	4	9	13	2	2	4	17
Computer Science	1	8	9	0	2	2	11
Earth Science	1	9	10	0	2	2	12
Industrial Technology	3	14	17	1	9	10	27
Mathematics	7	18	25	3	2	5	30
Physics	0	9	9	0	1	1	10
Social and Behavioral Sciences	37	71	108	13	11	24	132
Design, Family and Consumer Sciences	6	5	11	6	0	6	17
Geography	1	8	9	1	2	3	12
History	7	15	22	1	4	5	27
Political Science	2	13	15	1	1	2	17
Psychology	6	12	18	2	1	3	21
Social Work	6	7	13	1	1	2	15
Sociology, Anthropology and Criminology	9	11	20	1	2	3	23
Other	9	10	19	1	1	2	21
Continuing Education and Special Programs	0	0	0	1	0	1	1
Library	9	10	19	0	1	1	20

Source: Office of Institutional Research

*Excludes Deans and above



Fall Semester Total Student Credit Hours



	Total Student Credit Hours				% of Campus				04-05	Difference
	2002	2003	2004	2005	2002	2003	2004	2005	SCH	% Change
Total Student Credit Hours	172,559	166,618	160,595	154,687					-5,908	-3.7
Business Administration	25,028	24,102	23,319	22,455	15	15	15	14	-864	-3.7
Accounting	4,084	3,807	3,779	3,874	2	2	2	2	95	2.5
Economics	6,738	6,387	6,141	6,042	4	4	4	4	-99	-1.6
Finance	2,807	2,673	2,927	2,796	2	2	2	2	-131	-4.5
Management	8,151	7,985	7,388	6,833	5	5	5	4	-555	-7.5
Marketing	3,248	3,250	3,084	2,910	2	2	2	2	-174	-5.6
Education	33,471	34,792	32,885	31,017	19	20	20	20	-1,868	-5.7
Curriculum and Instruction	9,100	8,359	7,290	6,377	5	5	5	4	-913	-12.5
Educational Leadership	1,415	1,436	1,697	1,498	1	1	1	1	-199	-11.7
Psychology and Foundations	5,432	5,554	4,987	4,410	3	3	3	3	-577	-11.6
Health, Physical Education and Leisure Services	10,041	12,087	12,031	12,949	6	7	7	8	918	7.6
Special Education	2,016	1,964	1,683	1,442	1	1	1	1	-241	-14.3
Teaching	5,467	5,392	5,197	4,341	3	3	3	3	-856	-16.5
Humanities and Fine Arts	40,232	36,572	35,470	34,695	24	23	22	23	-775	-2.2
Art	4,967	4,274	4,018	3,634	3	3	2	2	-384	-9.6
Communication Studies	7,889	7,484	7,345	7,264	5	4	4	5	-81	-1.1
Communication Disorders	1,161	1,174	1,411	1,625	1	1	1	1	214	15.2
English Language and Literature	10,358	7,861	6,806	7,375	6	5	4	5	569	8.4
Modern Languages	4,242	3,891	4,403	3,740	2	2	3	2	-663	-15.1
School of Music	4,431	4,420	4,250	4,255	3	3	3	3	5	0.1
Philosophy and Religion	5,514	5,889	5,763	5,398	3	4	4	4	-365	-6.3
Theatre	1,670	1,579	1,474	1,404	1	1	1	1	-70	-4.7

Fall Semester Total Student Credit Hours (Continued)

	Total Student Credit Hours				% of Campus				04-05 Difference	
	2002	2003	2004	2005	2002	2003	2004	2005	SCH % Change	
Natural Sciences	33,184	30,771	29,443	27,635	19	18	18	18	-1,808	-6.1
Biology	8,499	8,159	7,556	6,954	5	5	5	4	-602	-8.0
Chemistry	3,542	2,842	3,052	3,138	2	2	2	2	86	2.8
Computer Science	2,270	2,197	1,674	1,472	1	1	1	1	-202	-12.1
Earth Science	2,493	2,348	2,504	2,345	2	1	1	2	-159	-6.3
Industrial Technology	3,482	3,372	3,589	3,173	2	2	2	2	-416	-11.6
Mathematics	10,499	9,588	9,037	8,921	6	6	6	6	-116	-1.3
Physics	2,399	2,265	2,031	1,632	1	1	1	1	-399	-19.6
Social and Behavioral Sciences	39,087	38,685	38,171	37,440	22	23	24	24	-731	-1.9
Design, Family and Consumer Services	4,986	4,915	4,639	4,587	3	3	3	3	-52	-1.1
Geography	3,878	3,709	3,857	3,650	2	2	2	2	-207	-5.4
History	9,518	8,300	8,004	8,582	6	5	5	5	578	7.2
Political Science	3,903	4,923	4,693	4,396	2	3	3	3	-297	-6.3
Psychology	6,898	6,959	7,078	7,249	4	4	5	5	171	2.4
Social Work	2,471	2,716	2,944	2,823	1	2	2	2	-121	-4.1
Sociology, Anthropology and Criminology	7,433	7,163	6,956	6,153	4	4	4	4	-803	-11.5
Other	1,557	1,696	1,307	1,445	1	1	1	1	138	10.6

Source: Office of Institutional Research



Fall Semester Student Credit Hours by College and Course Level

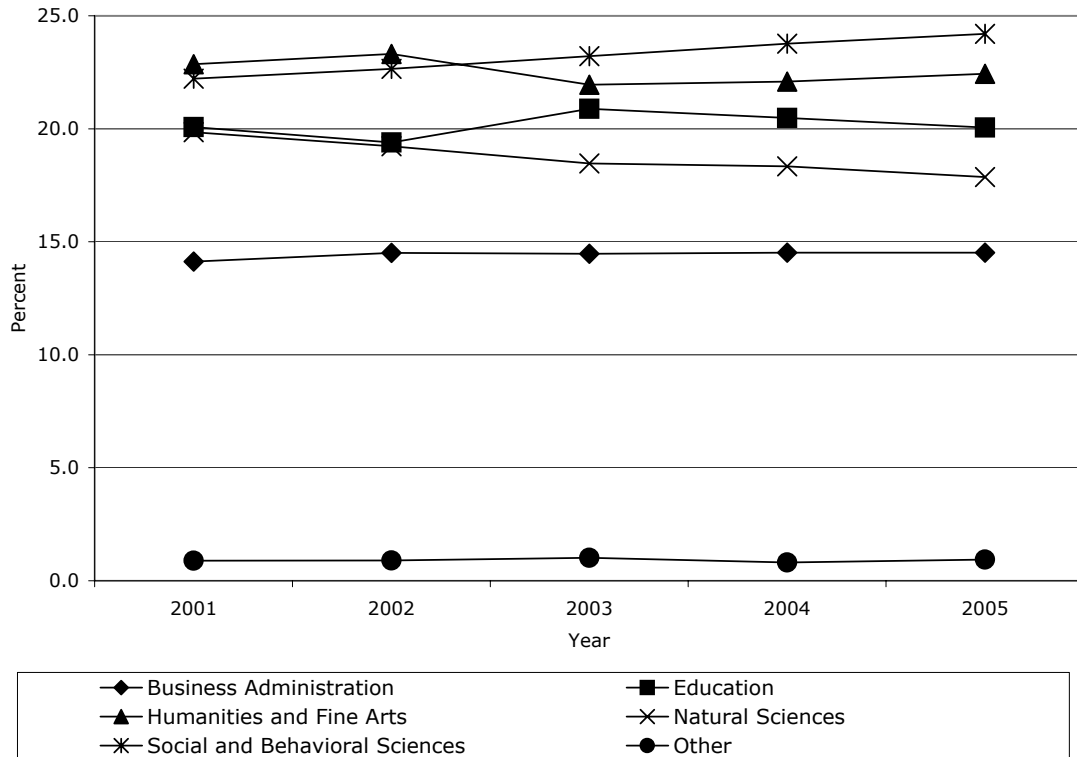


98

College	2002		2003		2004		2005	
	N	%	N	%	N	%	N	%
Total Student Credit Hours	172,559		166,618		160,595		154,687	
Undergraduate	166,498	96.5	160,351	96.2	153,687	95.7	148,067	95.7
Graduate	6,061	3.5	6,267	3.8	6,908	4.3	6,620	4.3
Business Administration	25,028		24,102		23,319		22,455	
Undergraduate	24,531	98.0	23,548	97.7	22,748	97.6	21,980	97.9
Graduate	497	2.0	554	2.3	571	2.4	475	2.1
Education	33,471		34,792		32,885		31,017	
Undergraduate	30,665	91.6	31,850	91.5	29,619	90.1	28,070	90.5
Graduate	2,806	8.4	2,942	8.5	3,266	9.9	2,947	9.5
Humanities and Fine Arts	40,232		36,572		35,470		34,695	
Undergraduate	38,928	96.8	35,221	96.3	34,069	96.1	33,261	95.9
Graduate	1,304	3.2	1,351	3.7	1,401	3.9	1,434	4.1
Natural Sciences	33,184		30,771		29,443		27,635	
Undergraduate	32,754	98.7	30,389	98.8	29,053	98.7	27,230	98.5
Graduate	430	1.3	382	1.2	390	1.3	405	1.5
Social and Behavioral Sciences	39,087		38,685		38,171		37,440	
Undergraduate	38,063	97.4	37,657	97.3	36,891	96.6	36,093	96.4
Graduate	1,024	2.6	1,028	2.7	1,280	3.4	1,347	3.6
Other	1,557		1,696		1,307		1,445	
Undergraduate	1,557	100.0	1,686	99.4	1,307	100.0	1,433	99.2
Graduate	0	0.0	10	0.6	0	0.0	12	0.8

Source: Office of Institutional Research

Fall Semester Total Student Credit Hours by College





**University of
Northern
Iowa**

Peer Institutions

New Freshmen and Transfer Admission

Institution	Location	% Accepted	SAT Scores*		ACT Composite Scores
			Verbal	Math	
Northern Arizona University	Flagstaff, AZ	85	470 - 590	470 - 590	19 - 25
California State University	Fresno, CA	95	410 - 530	430 - 550	16 - 22
Illinois State University	Normal, IL	75	-	-	22 - 26
Indiana State University	Terre Haute, IN	83	420 - 520	420 - 530	17 - 22
University of Northern Iowa	Cedar Falls, IA	80	430 - 600	480 - 610	20 - 25
Central Michigan University	Mt. Pleasant, MI	74	470 - 580	460 - 590	19 - 24
University of Minnesota	Duluth, MN	78	-	-	20 - 25
University of North Carolina	Greensboro, NC	78	470 - 570	470 - 570	-
Ohio University	Athens, OH	86	490 - 600	490 - 600	20 - 25
University of North Texas	Denton, TX	71	490 - 620	490 - 620	20 - 25
University of Wisconsin	Eau Claire, WI	66	500 - 600	500 - 640	22 - 26

Source: College Board

2004-2005 Academic year

UG-Fall 2004 undergraduate enrollment

*SAT Scores represent the middle 50% of first-year students' scores.



Undergraduate Enrollment and Costs



102

Institution	Location	UG	Student-to-Faculty Ratio	In-State Tuition & Fees	Room/Board	Out-of-State Tuition & Fees
Northern Arizona University	Flagstaff, AZ	13,333	17/1	\$4,393	\$5,960	\$13,023
California State University	Fresno, CA	16,650	18/1	\$2,933	\$6,584	\$13,103
Illinois State University	Normal, IL	17,878	19/1	\$7,091	\$5,748	\$12,971
Indiana State University	Terre Haute, IN	9,321	17/1	\$5,864	\$5,615	\$11,780
University of Northern Iowa	Cedar Falls, IA	11,266	16/1	\$5,602	\$5,537	\$13,214
Central Michigan University	Mt. Pleasant, MI	19,916	23/1	\$5,365*	\$6,160*	\$12,467*
University of Minnesota	Duluth, MN	9,441	22/1	\$8,929	\$5,546	\$20,036
University of North Carolina	Greensboro, NC	11,441	16/1	\$3,467	\$5,400	\$14,735
Ohio University	Athens, OH	16,950	19/1	\$8,235	\$7,686	\$17,199
University of North Texas	Denton, TX	24,274	18/1	\$6,100	\$5,350	\$14,380
University of Wisconsin	Eau Claire, WI	10,034	20/1	\$5,226	\$4,266	\$15,492

Source: U.S. News & World Report

UG-Fall 2004 undergraduate enrollment

Tuition and Fees and Room/Board - The institution's 2005-2006 academic year costs of attendance available at the time of completing the U.S. News & World Report's survey.

*2004-2005 Academic year

Graduate Enrollment and Costs: 2003-2004

Institution	Location	Graduate	In-State Tuition & Fees	Out-of-State Tuition & Fees
Northern Arizona University	Flagstaff, AZ	5,674	\$4,273	\$12,793
California State University	Fresno, CA	2,999	\$3,190	\$13,360
Illinois State University	Normal, IL	2,879	\$4,749	\$8,541
Indiana State University	Terre Haute, IN	1,847	\$6,152	\$12,128
University of Northern Iowa	Cedar Falls, IA	1,661	\$6,173	\$13,697
Central Michigan University	Mt. Pleasant, MI	7,767	\$5,715	\$10,560
University of Minnesota	Duluth, MN	685	\$9,397	\$16,496
University of North Carolina	Greensboro, NC	3,706	\$3,519	\$14,569
Ohio University	Athens, OH	2,765	\$8,670	\$16,662
University of North Texas	Denton, TX	6,881	\$4,450	\$9,100
University of Wisconsin	Eau Claire, WI	546	\$5,918	\$16,528

Source: Integrated Postsecondary Education Data System (IPEDS)



Faculty by Rank



104

Institution	Location	Professor	Associate Professor	Assistant Professor
Northern Arizona University	Flagstaff, AZ	240	217	156
California State University	Fresno, CA	270	87	129
Illinois State University	Normal, IL	234	197	277
Indiana State University	Terre Haute, IN	146	127	166
University of Northern Iowa	Cedar Falls, IA	175	206	136
Central Michigan University	Mt. Pleasant, MI	250	167	205
University of Minnesota	Duluth, MN	88	106	130
University of North Carolina	Greensboro, NC	156	162	184
Ohio University	Athens, OH	202	284	250
University of North Texas	Denton, TX	248	239	214
University of Wisconsin	Eau Claire, WI	147	111	94

Source: ACADEME Bulletin of the American Association of University Professors
2004-2005 Academic year; full-time faculty

Faculty Average Salaries by Rank

Institution	Location	Professor	Associate Professor	Assistant Professor
Northern Arizona University	Flagstaff, AZ	\$74,000	\$55,900	\$47,300
California State University	Fresno, CA	\$83,800	\$65,900	\$51,400
Illinois State University	Normal, IL	\$75,300	\$58,100	\$52,700
Indiana State University	Terre Haute, IN	\$73,000	\$58,100	\$49,900
University of Northern Iowa	Cedar Falls, IA	\$80,700	\$62,400	\$52,900
Central Michigan University	Mt. Pleasant, MI	\$81,600	\$63,700	\$51,800
University of Minnesota	Duluth, MN	\$80,900	\$66,900	\$51,100
University of North Carolina	Greensboro, NC	\$86,400	\$63,200	\$54,800
Ohio University	Athens, OH	\$88,200	\$65,900	\$54,400
University of North Texas	Denton, TX	\$80,700	\$61,800	\$52,100
University of Wisconsin	Eau Claire, WI	\$66,500	\$54,700	\$47,500

Source: ACADEME Bulletin of the American Association of University Professors

2004-2005 Academic year; full-time faculty

The salary figure represents the contracted salary excluding summer teaching, stipends, extra load, or other forms of remuneration.



Undergraduates Receiving Student Financial Aid: 2003-04*



106

Institution	Location	Federal Grants		State/Local Grants		Institutional Grants		Loans	
		N	\$	N	\$	N	\$	N	\$
Northern Arizona University	Flagstaff, AZ	502	3,063	11	1,492	1,459	3,183	927	3,454
California State University	Fresno, CA	1,087	3,438	1,267	1,923	1,204	2,633	540	2,682
Illinois State University	Normal, IL	545	2,721	950	3,688	329	3,980	1,425	3,406
Indiana State University	Terre Haute, IN	548	2,864	601	3,366	701	2,542	992	3,813
University of Northern Iowa	Cedar Falls, IA	387	2,635	150	901	810	2,647	1,045	4,036
Central Michigan University	Mt. Pleasant, MI	871	2,539	2,579	1,784	1,970	2,501	2,012	4,080
University of Minnesota	Duluth, MN	399	2,681	579	2,508	1,216	1,584	1,233	3,948
University of North Carolina	Greensboro, NC	604	2,461	819	1,217	288	2,677	1,532	3,342
Ohio University	Athens, OH	578	2,802	451	1,515	1,177	3,955	1,747	4,018
University of North Texas	Denton, TX	742	2,821	1,290	2,373	507	1,979	1,716	3,646
University of Wisconsin	Eau Claire, WI	331	3,049	683	1,731	214	1,113	917	3,634

Source: U.S. Department of Education,
National Center for Education Statistics,
Integrated Postsecondary Education Data System (IPEDS)

* Full-time, first-time, degree/certificate-seeking undergraduate students receiving financial aid, by type of aid for Fall 2003 cohort.

\$: Average amount of aid received.

Retention and Graduation Rates

Institution	Location	Retention* %	Graduation Rates** %
Northern Arizona University	Flagstaff, AZ	70	50
California State University	Fresno, CA	84	46
Illinois State University	Normal, IL	84	62
Indiana State University	Terre Haute, IN	68	42
University of Northern Iowa	Cedar Falls, IA	81	64
Central Michigan University	Mt. Pleasant, MI	78	55
University of Minnesota	Duluth, MN	76	46
University of North Carolina	Greensboro, NC	77	50
Ohio University	Athens, OH	82	70
University of North Texas	Denton, TX	74	40
University of Wisconsin	Eau Claire, WI	79	57

Source: Integrated Postsecondary Education Data System (IPEDS)

*2003-04 Academic year

**2004



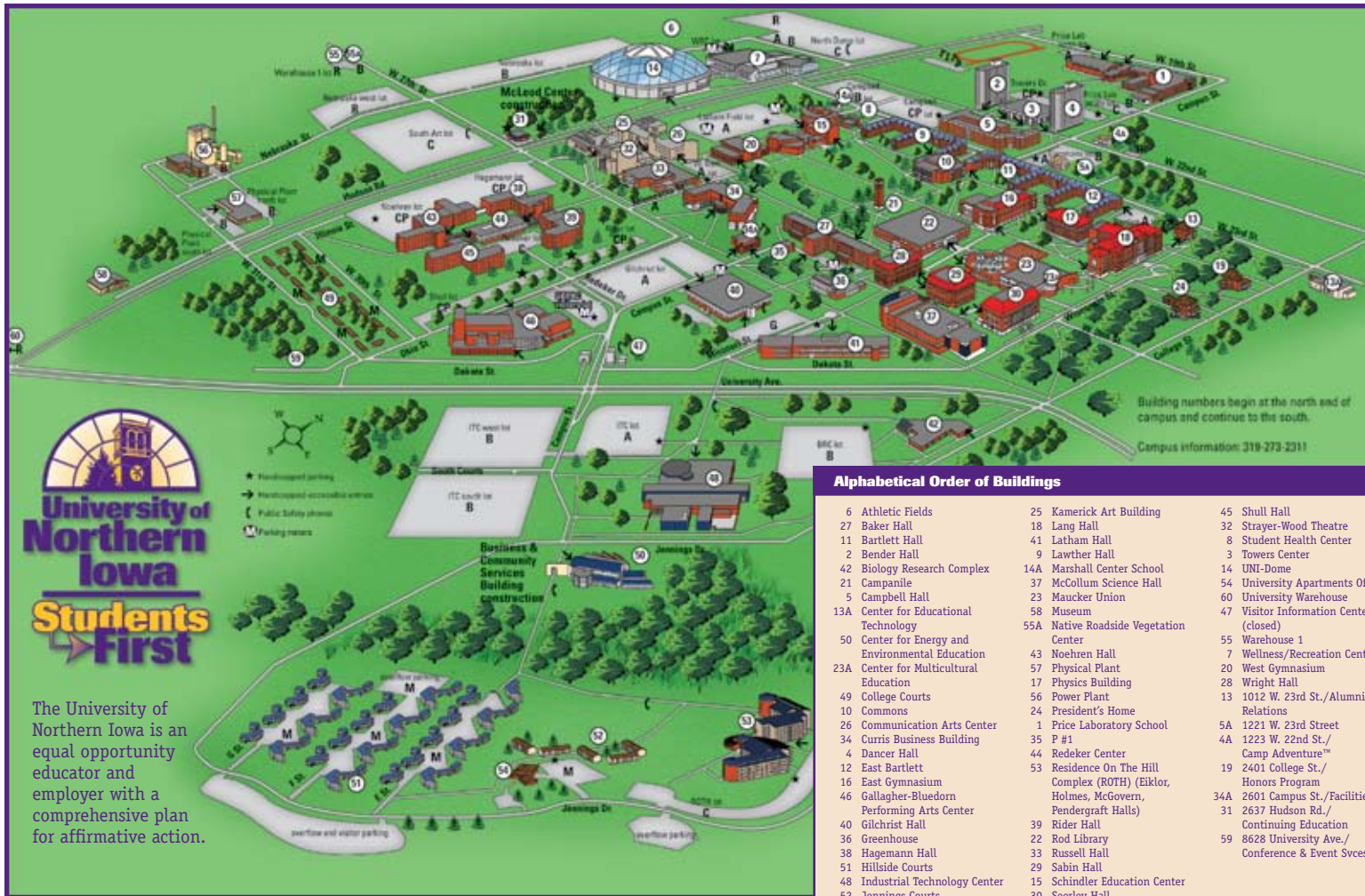
Degrees Granted In 2003-2004



108

Institution	Location	Baccalaureate (Bachelor's)	Master's	Doctorates	Total
Northern Arizona University	Flagstaff, AZ	2,931	2,059	75	5,065
California State University	Fresno, CA	2,922	563	2	3,487
Illinois State University	Normal, IL	4,148	678	43	4,869
Indiana State University	Terre Haute, IN	1,413	431	33	1,877
University of Northern Iowa	Cedar Falls, IA	2,584	445	10	3,039
Central Michigan University	Mt. Pleasant, MI	3,548	2,518	53	6,119
University of Minnesota	Duluth, MN	1,562	185	0	1,747
University of North Carolina	Greensboro, NC	2,076	1,001	85	3,162
Ohio University	Athens, OH	4,148	1,050	111	5,309
University of North Texas	Denton, TX	4,238	1,343	153	5,734
University of Wisconsin	Eau Claire, WI	1,814	134	0	1,948

Source: Integrated Postsecondary Education Data System (IPEDS)



Alphabetical Order of Buildings

6 Athletic Fields	25 Kamerick Art Building	45 Shull Hall
27 Baker Hall	18 Lang Hall	32 Strayer-Wood Theatre
11 Bartlett Hall	41 Latham Hall	8 Student Health Center
2 Bender Hall	9 Lawther Hall	3 Towers Center
42 Biology Research Complex	14A Marshall Center School	14 UNI-Dome
21 Campanile	37 McCollum Science Hall	54 University Apartments Office
5 Campbell Hall	23 Maucker Union	60 University Warehouse
13A Center for Educational Technology	58 Museum	47 Visitor Information Center (closed)
50 Center for Energy and Environmental Education	55A Native Roadside Vegetation Center	55 Warehouse 1
23A Center for Multicultural Education	43 Noehren Hall	7 Wellness/Recreation Center
49 College Courts	57 Physical Plant	20 West Gymnasium
10 Commons	17 Physics Building	28 Wright Hall
26 Communication Arts Center	56 Power Plant	13 1012 W. 23rd St./Alumni Relations
34 Curris Business Building	24 President's Home	5A 1221 W. 23rd Street
4 Dancer Hall	35 P #1	4A 1223 W. 22nd St./Camp Adventure™
12 East Bartlett	44 Redeker Center	19 2401 College St./Honors Program
16 East Gymnasium	53 Residence On The Hill Complex (ROTH) (Eiklor, Holmes, McGovern, Pendergraft Halls)	34A 2601 Campus St./Facilities
46 Gallagher-Bluedorn Performing Arts Center	39 Rider Hall	31 2637 Hudson Rd./Continuing Education
40 Gilchrist Hall	22 Rod Library	59 8628 University Ave./Conference & Event Svcs.
38 Hagemann Hall	33 Russell Hall	
51 Hillside Courts	37 Sabin Hall	
48 Industrial Technology Center	15 Schindler Education Center	
52 Jennings Courts	30 Seerley Hall	



Office of Institutional Research
University of Northern Iowa
Cedar Falls, Iowa 50614-0005

319-273-3050

