

Winter 2009

CSBS Statements, v11, Winter 2009

University of Northern Iowa. College of Social and Behavioral Sciences.

Let us know how access to this document benefits you

Copyright ©2009 College of Social and Behavioral Sciences, University of Northern Iowa

Follow this and additional works at: <https://scholarworks.uni.edu/csbsstatements>



Part of the [Higher Education Commons](#), and the [Social and Behavioral Sciences Commons](#)

Recommended Citation

University of Northern Iowa. College of Social and Behavioral Sciences., "CSBS Statements, v11, Winter 2009" (2009). *CSBS Statements*. 2.

<https://scholarworks.uni.edu/csbsstatements/2>

This Newsletter is brought to you for free and open access by the CSBS Newsletters/Magazines at UNI ScholarWorks. It has been accepted for inclusion in CSBS Statements by an authorized administrator of UNI ScholarWorks. For more information, please contact scholarworks@uni.edu.

Offensive Materials Statement: Materials located in UNI ScholarWorks come from a broad range of sources and time periods. Some of these materials may contain offensive stereotypes, ideas, visuals, or language.

University of Northern Iowa

CSBS *Statements*

College of Social and Behavioral Sciences

Winter 2009

Sabin Hall:
Building on the past,
Foundation for the future



CSBS Statements Volume 11 Winter 2009

CSBS Statements is published annually by the College of Social and Behavioral Sciences at the University of Northern Iowa for its alumni and friends.

Interim Dean: Dr. John W. Johnson

Associate Dean: Dr. Brenda Bass

Department Heads:

Design, Textiles, Gerontology, & Family Studies: Dr. Howard Barnes; Geography: Dr. Patrick Pease; History: Dr. Robert Martin; Political Science: Dr. Philip Mauceri; Psychology: Dr. Carolyn Hildebrandt (interim); Social Work: Dr. Thomas Keefe; Sociology, Anthropology, and Criminology: Dr. Kent Sandstrom
Editor: Holly Bokelman

The College of Social and Behavioral Sciences encourages correspondence from alumni and friends. Send letters to
CSBS Dean's Office
59 Baker Hall
Cedar Falls, Iowa 50614-0403

The University of Northern Iowa is an equal-opportunity educator and employer with a comprehensive plan for affirmative action.

Thanks to those who provided additional photos for *CSBS Statements*— Cover: University of Northern Iowa Archives; p3: Brooks Borg Skiles Architecture Engineering; p4: original artwork by Gary Kelley; p5: Ramanathan Sugumaran and GeoTREE Center; p6: University Marketing and Public Relations, Carol Cook, Mitchell Strauss; p7: Kay Weller, Raymond Ostertag; the UNI Museum; p8: Mary Losch, Mitchell Strauss; p9: Phyllis Baker; p10: R. Allen Hays; p11: Patrick Pease; p12: Donald Gaff, Mitchell Strauss; p13: Codye Lazear; p14: Ranya Ahmed, Lisa Akre; p15: Matt Sexton; pp16-17: John Aronowitz; pp19-20: University of Northern Iowa Archives.

Special thanks to Gerald Peterson and David Glime at UNI Archives and to Molly Grady

From the desk of the (Interim) Dean...

Like many of you, about a year ago I was reading Dean Julia Wallace's comments in *CSBS Statements*. Now I'm writing comments in this same space. What happened?

Well, first of all, in late 2007 Dr. Wallace accepted the position of Provost and Executive Vice President at Central Michigan University. We were sorry to see her leave UNI, but her new administrative appointment represented a wonderful career opportunity. To provide a bridge to her successor, I agreed to serve as Interim Dean of the College of Social and Behavioral Sciences from January 1, 2008, until June 30, 2009.

Taking over as the leader (albeit a temporary one) of a large and busy college in the middle of an academic year proved to be quite a challenge. During the 2008 spring semester, CSBS hired eleven new tenure-track faculty members. Much of my time that semester consisted of working with the architects and UNI's Office of Facilities Planning on the renovation of Sabin Hall—discussed elsewhere in *CSBS Statements*. This labor of love is continuing in the current academic year.

During the summer of 2008 we hired a new secretary, Karla Whitney, and a new interim head of the Department of Psychology, Carolyn Hildebrandt. And this fall, we welcomed Brenda Bass, associate professor of Family Services, as the college's new associate dean and John Aronowitz as our director of development.

Now, in the 2008-09 academic year, we have completed three tenure-track searches and have one more pending. We are also working on a new diversity recruitment and retention plan for the college. In 2007-08, CSBS faculty once again taught the largest number of student credit hours of any of the five college faculties at UNI. The college also continues to support an increasing number of students enrolled in study abroad courses and sponsors a myriad of academic lectures and workshops.

As you can see, the faculty and staff in CSBS are busy folks. We could not, however, accomplish all we do for our students and the people of Iowa without the help of alumni and friends who have given generously to the college. I thank you profoundly for your past and future financial support. And I promise to do my part to ensure a smooth transition to my successor—who will no doubt be writing in this space a year from now.



Dr. John Johnson, *Interim Dean*,
College of Social and Behavioral Sciences

In this issue:

- 2 Sabin Hall Renovation
- 4 CSBS News
- 6 College and Department Briefs
- 8 Faculty News: CSBS Faculty lead on issues of gender
- 10 Faculty Briefs
- 12 Student News
- 14 Student News: Opportunities Abound
- 16 College Development, Donors, and Scholarships
- 18 Alumni Updates...and your chance to be in our next edition

Sabin Hall Renovation Set to Begin

In January, faculty and staff vacated Sabin Hall as the university prepared to renovate the 95-year-old building for a new century of education. The project team for the renovation — comprised of members from the university's facilities planning division, the architectural firm Brooks Borg Skiles, and faculty, staff, and student representatives from CSBS — is nearing the end of the design phase. Once the demolition phase begins later this year, Sabin will be closed for eighteen months while the entire interior is gutted and renovated. The building's facade will remain largely unchanged, but the finished interior will include state-of-the-art classrooms and computer labs, streamlined offices, and entirely new mechanical systems. The project will also include an effort to restore and reuse many of the unique features of the original building, including the terrazzo floors and marble fixtures.

Another unique feature will be the interior light well. When constructed, the building included a shaft through its center that resembled a courtyard area. Walled and lined with windows, it allowed natural light to reach the interior rooms on each level. Over time, the light well was enclosed in order to add more interior square-footage, an elevator, and mechanical rooms. The new architectural design will restore the light well concept in an effort to honor the original building design and to capitalize on natural lighting. The new light well, however, will be an interior feature to increase efficiency, add an identifying central feature, and make room for student lounge areas.

The guiding principal for the design, construction, and use of the new building has been sustainability. UNI has increasingly been incorporating sustainable features into many of its practices and projects, and one of President Allen's early acts was to establish an energy commission. The Sabin Hall renovation, however, has the potential to be the leading campus example of sustainable design and function. One of the goals of the project is to achieve Leadership in Energy and Environmental Design (LEED) certification by the U.S. Green Building Council. This four-tiered rating system establishes standards for environmentally sustainable water usage, energy consumption, design innovation, and building materials, with a focus on easily renewable materials and reuse of existing materials. If the project is successful in meeting those standards, Sabin Hall will be the first LEED-certified building on UNI's campus.

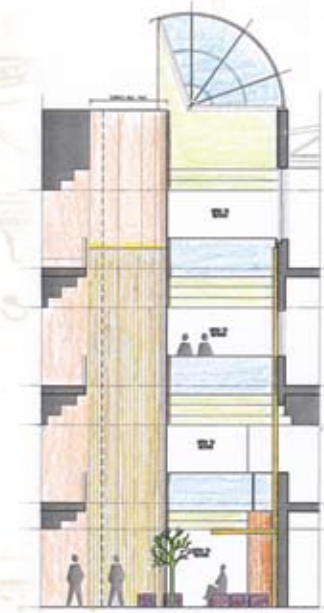
When completed, Sabin Hall will be a unique educational space. In addition to being an improved venue for the classroom experience, this model building will educate users to become more aware of their relationship to interior spaces and to be better stewards of resources. Scheduled to re-open in the fall of 2010, Sabin Hall will take UNI and the College of Social and Behavioral Sciences much further into the future.



Designing the renovated building is the architectural and engineering team of Brooks Borg Skiles, a direct descendant of the firm that designed the original Sabin Hall in the early 1900s.

Left: A preliminary architectural rendering proposing the renovated light well. A sky light, shown here as arched, will cover the space at the roofline, and the interior below will be open to the ground floor. Balconies will overlook the light well on its east and west sides.

Below: The proposed north wall of the light well. A series of windows will allow for natural day-lighting to reach the north corridors of the top two floors. The south side of the light well will feature a glass elevator flanked by balcony areas that will also lend light to the south wing. The image below is just one of many options the project team has discussed for color scheme and interior finish options.



WEST ELEVATION

Above: A student lounge area is proposed at the base of the light well. Plans include space for a small "light lounge", an area treated with spectrally enhanced lighting during the winter months to help with the ill effects caused by lack of sunlight.



NORTH ELEVATION

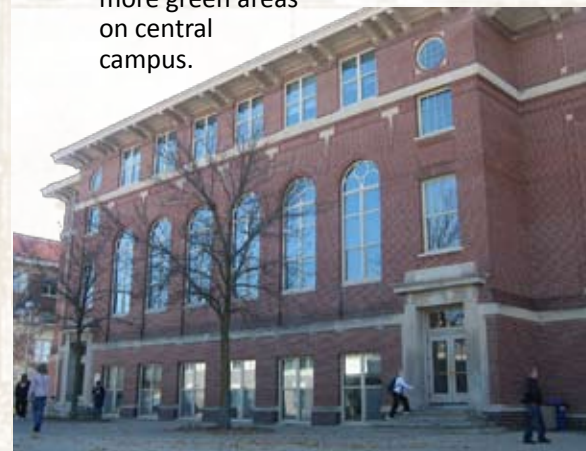
Below: Entrances to the building will be upgraded, and a new door will be added to the east side to help relieve congestion. Sabin's characteristic north windows will remain, though the large lecture hall behind them will be moved to the ground floor to create more usable space in the building. It will occupy the space behind the lowest row of windows seen here, Sabin's original gymnasium but long ago carved into offices and storage.

The plaza around the building, particularly the area between Sabin and Maucker Union, will include new landscaping and hardscaping to continue with the university's goal to use less concrete and include more green areas on central campus.



Above: The original courtyard area of the building was preserved on the top floor of Sabin. The renovation will add a skylight to the roof and a light well to extend through the entire center of the building. The vantage here is the same as the west elevation plan above; the proposed design would add a wall of windows at the right, a glass elevator on the left, and open balconies on the remaining sides.

The renovation planning process has been an experiential learning opportunity for students in the college's interior design program. Under the direction of professor Gowri Betrabet Gulwadi (*far right*), advanced design students have participated in several planning and design exercises. Students are shown here at an "eco-charette" session devoted to discussing sustainable concepts.



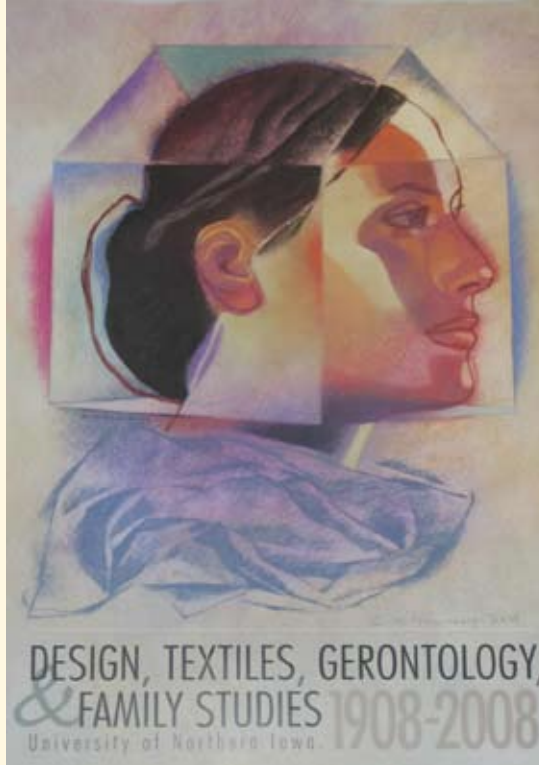
100th Anniversary Celebration

"Celebrating the past, creating new futures" is the theme for the 100th anniversary of the Department of Design, Textiles, Gerontology, & Family Studies.

While the department has seen many modifications of both name and curriculum over the past century, it has only grown in order to meet the changing needs of students and the discipline.

Originally offered as a vocational program through the Manual Training Department of ISNS, the two-year curriculum quickly grew into a four-year degree. Manual Training and Domestic Science eventually formed the Department of Home Economics, which it remained until 1992 when it was renamed the Department of Design, Family, and Consumer Sciences. In 2005, the name changed to the Department of Design, Textiles, Gerontology, and Family Studies in order to more accurately reflect the diverse course offerings, which now include Family Services, Gerontology, Interior Design, and Textiles and Apparel.

One of the anniversary celebration's events included the unveiling of an original artwork commissioned to represent the department's milestone. The piece is titled "A century of helping people specialize in living," which reflects both the long history of the department and its mission for the years ahead.



Gary Kelley, Cedar Falls artist and UNI alumnus, was commissioned to create artwork in honor the 100th anniversary. Posters are available for purchase; call (319) 273-2555 for more information.

GeoTREE

Eastern Iowa experienced more than its share of natural disasters this year, from deadly tornadoes to devastating floods. Fortunately, a geography program has been assisting local and state government agencies in better addressing such issues.

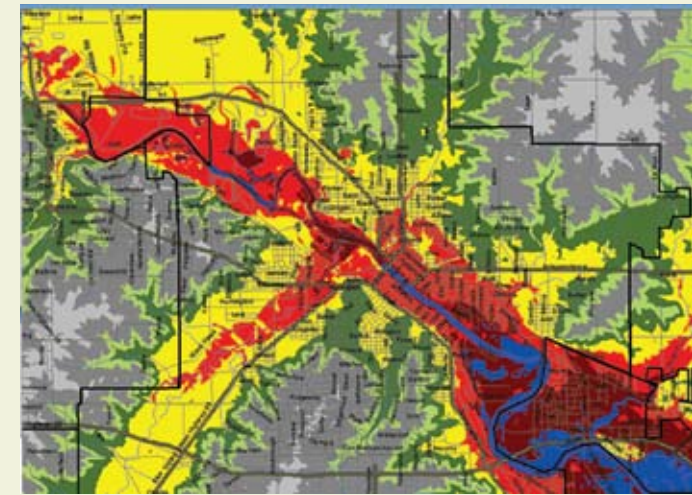
The department is home to the GeoInformatics Training, Research, Education, and Extension Center, or GeoTREE. Its primary goal is to train individuals from public agencies, including federal, state, local, and tribal agencies, to use geospatial technologies like geographical information systems (GIS), satellite remote sensing, and global positioning systems (GPS). The center's education programs, multi-disciplinary research, and outreach activities are designed to help agencies use those technologies to improve decision-making about resource management, environmental impact assessment, urban planning, cartography, and logistics to name a few. For example, such technology can ultimately help emergency personnel more easily gauge response times in the event of a natural disaster.

In October, GeoTREE hosted the 2008 Eastern Iowa GIS Day, part of an international educational event to showcase real-world applications of GIS.

The event, *Geospatial technologies for natural disaster management*, featured activities to inform a broad cross-section of users about latest GIS technology and applications, to share GIS data, and to foster an Iowa GIS network.

GeoTREE is also a key player in the Iowa LiDAR Mapping Project. LiDAR (light detection and ranging) is similar to radar, but it uses laser pulses rather than sound waves. GeoTREE is serving as the host site of the project, storing the high-resolution topographic data collected by the DNR and DOT for the entire state of Iowa. The center has already developed several software tools to aid users of the data sets. Beyond geography, it has applications in seismology, meteorology, geology, forestry, oceanography, and law enforcement, but of particular interest this spring was the use of LiDAR to identify areas in Waterloo and Cedar Falls at risk of flooding.

The GeoTREE project is directed by Ramanathan Sugumaran and aided by geography faculty Patrick Pease, Alex Oberle, and Tim Strauss. Several other UNI and CSBS affiliates are also included among the center's members.



GeoTree used data to create this map as the Cedar River flooded many areas of eastern Iowa this spring. The map identified areas of Waterloo/Cedar Falls susceptible to flooding should the levees have failed.



New Editorial Effort in CSBS

The Department of Sociology, Anthropology, and Criminology will soon be bringing a prestigious journal to campus. Kent Sandstrom, department head, and Marybeth Stalp, associate professor, have recently been named co-editors of the *Journal of Contemporary Ethnography* (JCE). Carissa Froyum, assistant professor, will be a deputy editor.

JCE is a flagship journal in ethnography, the scientific study of cultures and societies, and provides an international and interdisciplinary forum for research that uses ethnographic methods to investigate human behavior. Established in 1972, the journal has more than 1,990 institutional subscribers and provides online access to almost 5,000 academic institutions around the world. The journal will not only benefit faculty and students in sociology, anthropology, and criminology, but also the university's programs in education, women's studies, health studies, management, marketing, race and ethnic studies, gerontology, and religious studies.

Bringing JCE to campus will further the national and international visibility of the department, the college, and the university as well as advance the core components of President Allen's SERVE initiative: Service, Education, Research, Vocation, and Excellence. More specifically, the project will help enforce the importance of research, scholarship, and writing; highlight the unique opportunities for students to learn more about research and publishing; and enhance the research-related visibility of the department, the college, and the university. The college is proud to welcome this new venture and wishes the project a successful tenure.



Sociologists Marybeth Stalp and Kent Sandstrom will be co-editors of *The Journal of Contemporary Ethnography* for the next four to five years. The multi-disciplinary journal will provide faculty with a new level of professional engagement and will provide students with unique internship opportunities.

College and Department Briefs

This year has brought many changes to the **College of Social and Behavioral Sciences**. In addition to new administrators and support staff, the dean's office relocated to the lower level of Baker Hall for the duration of the Sabin Hall renovation. The next big project after the relocation will be a redesign of the CSBS Web site, which will include more features and more information for alumni.

U.S. Senator Charles and Barbara Grassley have announced a provision in their estate that will be used to endow the Chuck and Barbara Grassley Endowed Professorship in Political Science. Sen. Grassley received a bachelor's degree in political science education in 1955 and a master's in social science education in 1956. Mrs. Grassley received a bachelor's degree in accounting in 1983 after having raised their five children.



Pictured above at the announcement of the Grassley endowment are (L to R) Philip Mauceri, head of the Department of Political Science; President Allen; and the Grassleys.

This summer, the **Department of Social Work** again collaborated with the UNI Study Abroad Program to offer the course *Social Services in Nicaragua*. The course explored the core issues of family and community development, health care, orphaned children, and pressing social problems.



The **Department of History** continues to be involved in study abroad programs. Current offerings include summer Capstone courses in Poland with Konrad Sadkowski; in Greece with Greg Bruess; and in Italy with Jay Lees.

The **Department of Design, Textiles, Gerontology, & Family Studies** hosted the 16th Annual Textiles and Apparel Student Design Show, *The Look*, in April.

Entirely the work of students, the expo featured designs inspired by such iconic figures as Audrey Hepburn, Twiggy, Grace Kelly, and Marilyn Monroe.



This gown, designed by Leigh Jensen, was included in the 2008 design show. For more information, see page 12.

Tom Patterson of Harvard's John F. Kennedy School of Government gave the **Hoxie Lecture** this year, co-sponsored by the Departments of History and Political Science, on the role of the press during the presidential primaries.

The **Iowa Center for Immigrant Leadership and Integration (ICILI)** continues to guide communities as they accommodate immigrant and refugee newcomers living and working in Iowa. Director Mark Grey (Anthropology) was very involved with the Postville community and served as a strong advocate for the immigrant population after last year's immigration raids.



Above: The Social Work group that traveled to Nicaragua this summer included (L to R) Marissa Finn, instructor Carol Cook, Kelli Case, Casey Herkelman, and Lindsay Killian. Left: A three-generation Nicaraguan family plagued by poverty and abuse seeks a better life in a shelter by making greeting cards and other craft items.



Above: Kay Weller and husband Ray at Lake Atitlan and one of Guatemala's active volcanoes. Below: The Jaguar Temple at Tikal.

The **Geographic Alliance of Iowa**, led by Kay Weller, took 14 teachers and families to Guatemala for a workshop in June. "The Marginalization of the Maya" ran over an 11-day period and included visits to Lake Atitlan, the deepest lake in Central America, and Chichicastenango, the largest marketplace of the indigenous people.



The group also visited Tikal, a World Heritage Site settled in 700 B.C. The site is also famous for its unique appearance and served as the filming location for the rebel base in the original *Star Wars* film.

The **Center for Social and Behavioral Research (CSBR)** secured \$4.8 million in external funding for 28 projects last year. The majority of these projects addressed issues of public health in Iowa, specifically tobacco use and cessation, unintended pregnancy, problem gambling, and behavioral health risks.

The **Department of Psychology** hosted the 15th Annual College of Social and Behavioral Research Conference this spring. The conference is a venue for student researchers from UNI and other Midwestern universities to present original research, and its purpose is to facilitate research, advance scholarly activities, and promote fellowship in the social sciences.

The **Department of Sociology, Anthropology, and Criminology** hosted a series of speakers last year. Guests included Ron Berger (University of Wisconsin), who lectured on the Holocaust; Michael Bohlander (University of Durham, UK), who spoke about collateral civilian damage in armed conflicts; and Jules Lobel (University of Pittsburgh), who spoke about the Constitution and the war on terror.

The **Department of Political Science** hosted the 11th annual Great Plains Political Science Association conference in September. Organized by Christopher Larimer, assistant professor and vice-president of the association, the event drew academics and practitioners from throughout the Midwest and Great Plains. The event promotes the study of political science and public affairs and serves as a forum for faculty and student presentations, faculty development, and workshops.

The college recently awarded **Adele Whitenack Davis Gerontology Awards** to four UNI faculty. The stipends allow recipients to conduct publishable gerontological research in their respective areas of expertise. Two CSBS faculty are among this year's recipients: Helen Harton (Psychology) will be conducting research on retirement communities, and Elaine Eshbaugh (Family Services) will investigate why students choose careers in aging-related fields.

The **Department of Geography** helped the UNI Museum during their hosting of a special program this spring titled *Earth from Space*. The program is a traveling exhibit developed by the Smithsonian Institution that displays how satellites and satellite remote sensing are changing our view and understanding of the Earth. Faculty also helped set up an interactive link to real-time satellite information, and professors Alex Oberle and Ramanathan "Sugu" Sugumaran presented.



Earth from Space at the UNI Museum.

The **CSBR** engaged a record 151 students in its projects last year. Student researchers gain valuable experience in data collection, literature review, questionnaire construction, data analysis, report preparation, and presentation of findings. In addition to offering increased opportunities to students, the Center has expanded to now employ nine professional staff members. It also moved to a new permanent home when Sabin Hall closed at the beginning of this year.

CSBS faculty take the lead on women's and gender issues

Several initiatives are underway in the College of Social and Behavioral Sciences to address timely issues of health and safety for Iowa's women.



Mary Losch has been assistant director of the Center for Social and Behavioral Research (CSBR) since 1998.

Mary Losch, professor of psychology and associate director of the Center for Social and Behavioral Research, is heading a 5-year, \$11.5-million project to develop and assess the effectiveness of programs aimed at reducing the rate of unintended pregnancies among Iowa women aged 18 to 30. Currently, about half of all pregnancies in Iowa are unintended—either mistimed or unwanted. The ultimate goal of the program will be to determine the best ways to increase knowledge and influence behaviors that will result in fewer unintended pregnancies and fewer abortions.

Losch's project is titled the Iowa Initiative Research Program. Part of the Iowa Initiative to Reduce Unintended Pregnancies, directed by Iowa's former first lady Christie Vilsack, the program will include five individual studies designed to increase knowledge of contraception and improve contraceptive behaviors.

The initial phase will include the development of the individual studies. These individual projects will include salon intervention, in which stylists are trained to provide a handful of public health messages on the topic as well as referrals for family planning; pharmacy intervention, in which pharmacies are encouraged to increase the visibility and accessibility of over-the-counter contraceptives; radio serials with reproductive health messages aimed at African-American and Hispanic audiences; and social marketing campaigns, which will provide educational messages via local events, social networking Web sites, and other media.

Losch was selected to lead the project because of her extensive history of working with child and maternal health in Iowa and with research participant protections and quality standards. She is collaborating with UNI assistant professor Susan Roberts-Dobie in addition to faculty at the University of Iowa and the University of Alabama Birmingham to direct the projects, along with a research support staff of about 25 individuals. The project activities will run from 2009-2011, and the final year of the project will be devoted to evaluation and dissemination of findings.

Annette Lynch, professor of textiles and apparel, is continuing her work on a program to combat gender-based violence on Iowa's university and college campuses.

The Regents Campus Gender Violence Prevention Project is part of a nearly \$1-million grant from the US Department of Justice. UNI is one of only four institutions to receive this grant and was selected largely due to Lynch's work on a handful of similar programs that have served as models for other campuses across the country.

The grant has established UNI as the flagship of a collaboration that includes



Annette Lynch was director of UNI's women's studies program from 1999 to 2002.

the University of Iowa and Iowa State University. The main goal of the program is to reduce the probability of gender-based violence by implementing a mandatory education program for new students, enhancing the training of campus police, developing courses and curricula to better educate students and faculty on victim services and gender violence prevention, and creating a statewide Men's Gender Violence Prevention Institute.

Most recently, the program has taken on an even larger leadership role. In light of a high-profile sexual-assault investigation at the U of I, the Board of Regents has called for a review of safety policy and procedures on each of its campuses. Lynch will be leading the review effort as well as the charge to develop and implement national best-practice sexual-assault and misconduct policies and procedures on all three campuses.

Other UNI affiliates working on the grant are W. Michael Fleming, associate professor of family studies; Harry Brod, professor of philosophy; Karen Mitchell, professor of communication studies; and Jennifer Crawford, graduate student in psychology.

The Women's and Gender Studies (WSG) Program is a multidisciplinary program sponsored by CSBS and the College of Humanities and Fine Arts. In addition to its academic curriculum for both undergraduate and graduate students, WGS continues to offer programming and foster interdisciplinary collaboration on a variety of gender-related issues.

Safe Date Tailgate: This year, students and faculty in the program hosted the third annual event. Held before the UNI homecoming football game, it raises awareness about safe dating and violence prevention on campus. Around 400 campus and community members attended the tailgate for free food, drinks, and tailgating games.

Volunteers provided homecoming tailgaters with educational materials on safe dating, including information about violence intervention services. Dating safety is a particular concern in situations like tailgating and weekend partying where alcohol is involved.

SAVE: Students against a Violent Environment is a UNI group committed to reducing gender-based violence on campus. They seek to create a safer and more equitable environment, inclusive of all students, through mentorship, activism, advocacy and theatre. The SAVE Forum actors are a peer theatre group that presents workshops about college social life, sexual intimacy, gender issues, and UNI's policy on sexual misconduct to various groups including new students, student athletes, fraternities and sororities, and other student organizations.

UNI-GLBTAU: This group provides support for members of the UNI community who are gay, lesbian, bisexual, or transgendered, and their family and friends. Education is another primary function and the group sponsors many programs and campus activities for this purpose. Anyone who supports the purpose of the organization can be a member, regardless of sexual orientation.

CROW Forum: Each year, WGS sponsors the Current Research on Women Forum Series. Open to the university and community, the monthly series features UNI faculty presenting their research on various women's and gender issues.



Above: Students take part in the third annual Safe Date Tailgate before the 2008 Homecoming game.



Left: Phyllis Baker, professor of sociology, is director of the Women's and Gender Studies program.

Faculty Briefs

R. Allen Hays (Public Policy) spent last fall teaching and researching on citizenship and community organization at Queens University in Belfast, Northern Ireland.



Al Hays, director of UNI's graduate program in Public Policy and shown above in Northern Ireland, was a 2007 Fulbright Scholar.

William Downs (Social Work) is heading a pilot study on the victimization, mental health problems, and substance abuse of deaf women. Little study has been done on the subject, the major barriers to which have been the inability to translate existing measures into sign language and the inability of researchers to understand the complexities of the deaf population. He hopes the study will lead to a project examining the issues of Iowa's deaf women.

Annette Lynch and **Mitchell Strauss** (Textiles and Apparel) have authored a new book, *Changing Fashion: A Critical Introduction to Trend Analysis and Meaning*. A multi-disciplinary approach to fashion change, the book examines theories from the perspective of fashion studies, cultural studies, sociology, psychology, and art history.

Reinier Hesselink (History) is spending the 2008-2009 academic year in Portugal under a fellowship from the National Endowment for the Humanities. He is the first UNI faculty member to receive this particular prestigious NEH fellowship.

Elaine Eshbaugh (Family Services) was named the recipient of the Charles Hill Award for Non-Tenured Faculty. The award, established to retain quality professors, will allow her release time to research the topic of predicting parenting stress among low-income adolescent mothers.

Helen Harton (Psychology) received the award for Outstanding Contributions to Graduate Education for her role in graduate student development and success. She also coordinates the graduate program in psychology.

Laura Kaplan (Social Work) collaborated this summer with a faculty member from UNI's School of HPELS to study college women's perceptions of their appearance and body shape. The results of the study contribute to the understanding of body satisfaction and dissatisfaction across the lifespan and will be incorporated into courses in social work, mental health, family services, and health/wellness.

Tim Strauss (Geography) directs the Midwest Transportation Consortium (MTC), funded by the US Department of Transportation. MTC supports graduate student education and research in transportation, especially in the use of spatial analysis tools and methodologies to promote transportation safety. Entering its tenth year at UNI, MTC's current partners are Iowa State University and the University of Iowa.



James (Fred) Fryman (above) retired last spring after 30 years of teaching in the Department of Geography. **Melba Widmer** retired last summer after 31 years of teaching in the area of interior design.

Linda Walsh (Psychology) is on the steering committee of the Iowa Teachers of Psychology Conference. Now in its ninth year, the conference draws teachers and teachers-in-preparation of all levels.

Kay Weller (Geography) received an "Apple Polisher" award from UNI's Student Admissions Ambassadors in recognition of her positive influence on students. She was also named an honorary football coach for one game due to her long history of working with student athletes—and her *Geography of Sports* class has long been one of the most sought-after classes in geography.

M. Catherine DeSoto and **Robert Hitlan** (Psychology) will soon present at an autism conference in Warsaw, Poland. Their publication on the topic was named one of the 10 most-read articles for biology in Dec. 2007.

Faculty Awards

Each year, the College of Social and Behavioral Sciences honors outstanding faculty members who excel in teaching, research, and service. The following award winners were recognized at the annual State of the College Address this fall.

Congratulations to our outstanding faculty of 2008!

Kristin Mack (Sociology): Regents Award for Faculty Excellence

Otto MacLin (Psychology): UNI Distinguished Scholar Award

M. Catherine DeSoto (Psychology) and **Ramanathan Sugumaran** (Geography): Outstanding Scholarship Award

Anne Woodrick (Anthropology): Outstanding Service Award

Ronald (Joe) Gorton (Criminology): Outstanding Teaching Award

Richard Featherstone (Criminology): Outstanding Teaching Award for Untenured Faculty

Among the recent works of History faculty are two books: *The Early American Table: Food and Society in the New World* by **Trudy Eden** and *The Darbar of the Sikh Gurus: The Court of God in the World of Men* by **Louis Fenech**.

Ramanathan "Sugu" Sugumaran (Geography) won a 2008 Veridian Credit Union Community Engagement Award for his work with the GeoTREE Center. The center is an invaluable technological resource to public agencies as well as to UNI graduate and undergraduate students. The award honors faculty who combine their instructional and scholarly efforts with projects that benefit the greater community.

Congratulations to our faculty who earned tenure and promotions last year! Such an achievement requires rigorous scholarly activity and rewards our faculty's dedication to the highest quality of scholarship, service, and teaching. Receiving tenure and promotion to the rank of Associate Professor were **Seth Brown** (Psychology), **Richard Featherstone** (Criminology), **Robert Hitlan** (Psychology), **Marybeth Stalp** (Sociology), and **John Williams** (Psychology). Promoted to full Professor were **Carolyn Hildebrandt** (Psychology), **Mary Losch** (Psychology), and **Annette Lynch** (Textiles and Apparel)

New Faculty

We've had a bumper crop of new faculty this year. Eleven in all, it's our largest cohort in recent memory.

Design, Textiles, Gerontology, & Family Studies: **Patricia Gross** (PhD, Univ. of Arizona), family services; **Jillisa Moorman** (MFA, Iowa State), interior design

Geography: **Andrey Petrov** (PhD, Univ. of Toronto), geospatial technology

History: **Emily Machen** (PhD, Univ. of Mississippi), European women's history;

Pablo Ben (PhD, Univ. of Chicago), Latin American history

Political Science: **Justin Holmes** (PhD, Univ. of Minnesota), American politics;

Ramona McNeal (PhD, Kent State), American politics, public policy.

Psychology: **Sundé Nesbit** (PhD, Purdue), clinical psychology

Sociology, Anthropology, and Criminology: **Steven Briggs** (PhD, Univ. of Nebraska), criminology; **Ruth Chananie-Hill** (PhD, Southern Illinois), sociology;

Donald Gaff (PhD, Michigan State), anthropology



New CSBS faculty (L to R): Pablo Ben, Jillissa Moorman, Steven Briggs, Ruth Chananie-Hill, Justin Holmes, Emily Machen, Andrey Petrov, Patricia Gross, Donald Gaff, Ramona McNeal, and Sundé Nesbit.

Student News

Digging In

Last summer, a group of anthropology students had the opportunity to participate in an archaeological field school at Hartman Reserve Nature Center in Cedar Falls.

Under the direction of Donald Gaff of the Department of Sociology, Anthropology, and Criminology, the students carefully mapped, sifted, and documented a dig site nestled among the trees of the reserve. The team recovered many prehistoric artifacts, including ceramics and stone tools from approximately



Above: Anthropology students participate in an archaeological field school this summer at Hartman Reserve.

AD 400-1200. Among the more unique finds were three miniature projectile points (arrowheads) smaller than one inch in length.

Preliminary results suggest that the site was once a small Native American summer camp, and several of the students presented their research at the Midwest Archaeological Conference in Milwaukee this fall. Opportunities like these exemplify the ways in which the college strives to supplement classroom learning with experiential activities.

Dressed for Success

The 16th Annual Textiles and Apparel Student Design Show, *The Look*, was held in April. The highlight of the TAPP students' academic year, the expo featured designs inspired by fashion icons and once again brought a full house to the Lang Hall auditorium. One of the stars of the 2007 show, however, is still turning heads with her work.

Claire Brooks, a senior from Floyd, Iowa, began the design of her garment after a workshop with the apparel designer and artist known as Cat Chow. The artist visited UNI



in 2007 and worked with students from TAPP, art, and theater on non-traditional apparel designs. Inspired by working with her, Claire began constructing her garment (left) with plastic tubing from a plumbing supply store. She cut the tubing into sections and inserted beads to create color and pattern, and she then reconnected the tubing with metal wire hoops she designed in the Cat Chow workshop.

In October, Claire traveled to Akron, Ohio, to present her work at the annual symposium of the Costume Society of America. She says of her experience, "I [was able] to experience at an undergraduate level research that is normally conducted on a graduate level. It will definitely benefit me in the future as I continue my education and begin to look at graduate schools in the field."

Above: The directors of the 2008 TAPP show (L to R) Leigh Jensen, Stephanie Nederhoff, Caley Lensch, and Krystle Hovey. Left: A model shows off Claire Brooks' garment at the 2007 design show. For more photos of the show, see www.uni.edu/tapp/design_shows.htm Photos courtesy of TAPP professor Mitchell Strauss



Denmark's the Spot

Codye Lazear, a junior textile and apparel major from Des Moines, is readjusting to American living after having spent half of last year abroad.

She and her friend Justin both studied in Aalborg, Denmark, during the spring semester. Along with negotiating a different culture and language, they also encountered a different academic structure. The semester is longer, and courses only meet once per week, which means a lot of independent studying for the students. Among the courses she was enrolled in, her favorite was about the Beat Generation and the works of Beat writers William Burroughs, Allen Ginsberg, and Jack Kerouac.

Outside class, Codye and Justin traveled extensively. In addition to visiting England and Scandinavia, they also traveled Europe as far south as Hungary. In Denmark, they became fast friends with two Korean students, so much so that Codye is planning a trip to South Korea and Japan this summer. She says, "I've started to learn Korean and am very interested in that culture."

Codye loves Iowa and spent much of her time abroad telling people all about it. But she can't wait to see more of the world. She encourages other students to study abroad but cautions them to research the institutions and programs, as the education is important and studying abroad is definitely not just a vacation.

After graduation, Codye would like to find a career in fashion show production. Such a search will likely take her far from home, but she already has a lot of experience there.



Codye Lazear and her boyfriend Justin Thye visited rural western Norway, allowing them to see his great-great grandmother's childhood home and visit relatives there. Codye is also one of CSBS's Alderman Scholars.



Student Briefs

Elisabeth Pastrano (Public Administration) interned at the U.S. Department of Commerce in Washington, D.C.

Nick Kirk (Geography), a left-handed pitcher for UNI baseball, threw the first Panther no-hitter in 13 years. Striking out 15 players earned him the title Louisville Slugger's National Player of the Week.

Students in **Phi Alpha Theta** and the **UNI History Club** organized their first student-sponsored lecture series, which centered on the history of sexuality.

Sergiu Barbu (Political Science) interned at the U.S. Embassy Political Section in Bucharest, Romania.

The **Student Social Work Association** (SSWA) continues to be active in the community. Their 2007 project was a playroom for the Salvation Army battered women's shelter, and the 2008 effort was a hope quilt for Project Recovery.

Joshua Tieskotter (History)

interned at the Navy Historic Center, a naval museum in Washington, D.C.

Adam Lee (Geography) won first prize at the 15th Annual College of Social and Behavioral Research Conference in April for his research project with professor Ramanathan Sugumaran titled *MUSLE-based Soil Erosion Modeling Using ArcGIS*.

Students in the areas of **Family Services** and **Gerontology** volunteered more than 29,000 hours to local non-profit service agencies last year.

Graduate students **Finn Kolsrud** (Sociology) and **Josephine Kipgen** (Women's and Gender Studies) presented at the Midwest Sociological Society Annual Meeting in St. Louis in March. Researched under the guidance of professor Marybeth Stalp, their presentation was titled, *Men (and Women) in Tights: The Carnival Atmosphere of RAGBRAI*.

Field of Opportunities

No matter your interest in politics, we can all agree that 2008 was a politically historic year. It was also a year of exciting opportunities for many CSBS and Political Science students.



Ranya Ahmed in Washington

Ranya Ahmed always knew she wanted to study political science. Her father started teaching her about history and politics when she was three, and she's been in love with politics ever since. She also thought political science was a major she could travel with, a degree that could take her anywhere.

Ranya came to Cedar Falls from the city of Riffa in Bahrain, a tiny island kingdom in the Persian Gulf not quite three times the size of the Cedar Valley. Of the many options available to her around the world, Ranya chose to attend UNI because, she says, "It's a great school in a politically important state." She's been heavily involved in both school and politics since she

arrived. On campus, she is especially active in the International Student Association and as the international student director for the Northern Iowa Student Government. Off campus, Ranya began working as an intern for Senator Obama's campaign before the Iowa caucuses and has been working for the campaign or the Democratic Party since then. Because of her efforts, she was rewarded with a ticket to President Obama's inauguration in Washington, D.C. While there, Ranya also attended the staff celebration held for the event, "which was definitely the highlight for me," she says.

She has been active in Model UN, including Bahrain Model UN and serving as a student ambassador for the group at The Hague. After graduation in May, she will put all her experience to good use when she begins working for the United Nations in New York City.

Ranya has a personal goal of visiting 50 countries before she turns 50 years old. She's already been to 25 countries, and we know this promising young woman will reach her goal—and probably long before she's 50.

Lisa Akre, a senior in political communication and an SBS Scholar from Clive, had never been to Washington, D.C., but she spent the spring semester studying and working there. Through The Washington Center, a program designed to connect college students from around the world with internships in our nation's capital, Lisa was placed as an investigative intern with the Georgetown University Law Center Criminal Justice Clinic. And by combining the internship with one class, she earned a full semester's worth of college credit.

Lisa says, "As a future law student, I gained valuable hands-on experiences that reaffirmed my interest in this field. Daily tasks required going to court, serving subpoenas, taking witness statements, measuring crime scenes, meeting with clients, and visiting clients in jail. Outside the internship, I had the chance to make great friends while exploring D.C. together. Some of the highlights for me were hearing oral arguments at the Supreme Court, meeting the Mexican First Lady, experiencing the National Cherry Blossom Festival, and, of course, visiting the variety of monuments and museums that D.C. has to offer."

Lisa has already been accepted to a handful of law schools. She's still deciding which one she will attend in the fall, but we are certain she'll do well whatever she decides.



Lisa Akre (center) and friends at the White House

Matt Sexton, a freshman political science major from Ankeny, lists two loves: politics and debating politics. Fortunately for him, he was presented with an outstanding opportunity last summer. A few weeks before even arriving on campus for his first year of college, he accepted the position of the UNI chair of the group *Students for McCain*. While the prospect was a little daunting at first, he accepted the challenge and jumped right in to rally support for the presidential candidate all the way to the local candidates.

His position afforded Matt many unique opportunities, including speaking to classrooms of students, chatting with students in the union, engaging in debates across campus, networking with supporters from across the state, and meeting John McCain himself. Matt describes the experience he gained as invaluable, and he projects a positive attitude despite an outcome different from the one he worked so hard for. "There is no bitterness or resentment on this end. I fought for something that I believed in to the best of my ability. A majority of the American people simply didn't see things as I did. Barack Obama is my president now and I sincerely hope his presidency is a success."

After completing his bachelor's degree, Matt plans to join the United States Air Force for a six-year military commitment. He hopes to then use the G.I. Bill to apply to law school. "I certainly wouldn't rule out my own run for elected office when the time is right," Matt says. "I still have a lot to do for my community and country first, and I'd like to think that began with what I did here."



Matt Sexton and Senator John McCain

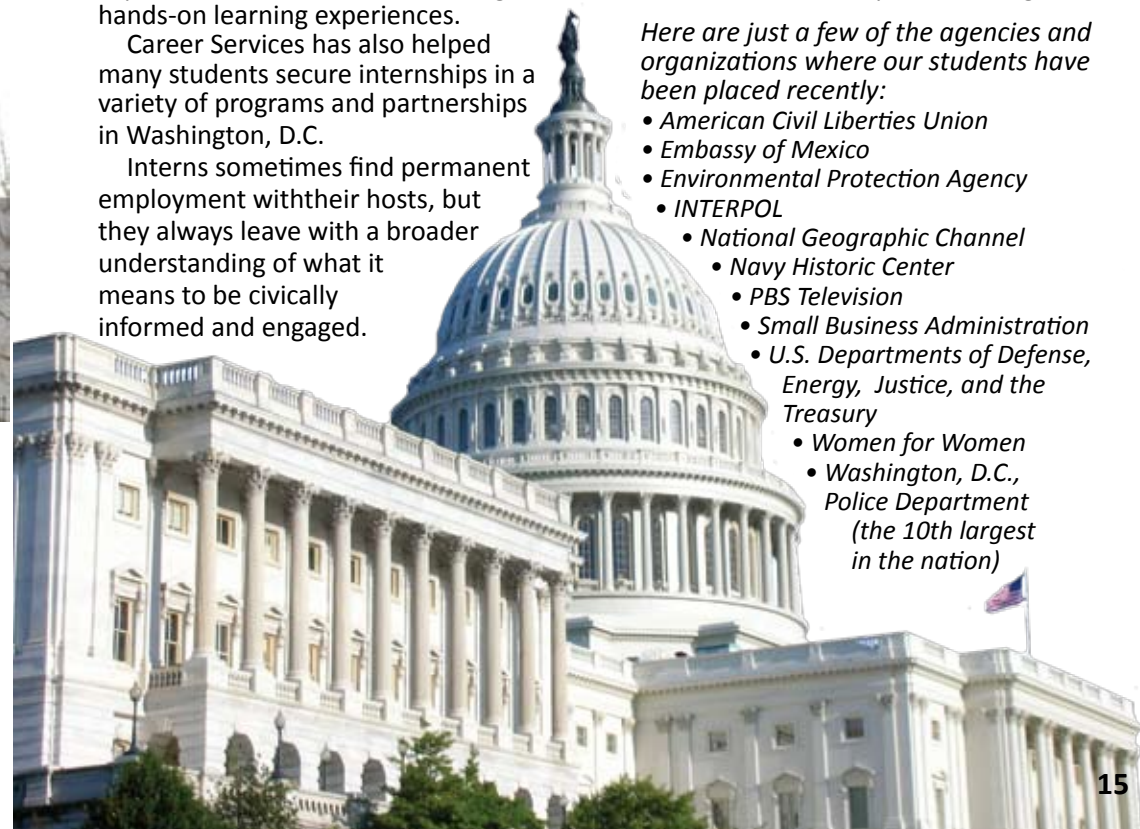
UNI's Career Services offers many opportunities for students, including career exploration resources, interviewing and résumé assistance, and help with finding hands-on learning experiences.

Career Services has also helped many students secure internships in a variety of programs and partnerships in Washington, D.C.

Interns sometimes find permanent employment with their hosts, but they always leave with a broader understanding of what it means to be civically informed and engaged.

Here are just a few of the agencies and organizations where our students have been placed recently:

- American Civil Liberties Union
- Embassy of Mexico
- Environmental Protection Agency
- INTERPOL
- National Geographic Channel
- Navy Historic Center
- PBS Television
- Small Business Administration
- U.S. Departments of Defense, Energy, Justice, and the Treasury
- Women for Women
- Washington, D.C., Police Department (the 10th largest in the nation)





John Aronowitz
UNI Foundation, CSBS
Director of Development

Greetings from campus!

As an alumnus and as an employee of the University of Northern Iowa, I am amazed at how the academic year seems to pass by at a frantic pace.

The fall semester begins by welcoming new students to campus who are eager to begin their academic careers and participate in everything the university has to offer. During the spring semester the activity level reaches its highest level with lectures, concerts, the winter sports season and the natural beauty of our campus covered by snow.

While we have a lot to offer at UNI, please know that the opportunities on our campus

are not created in a vacuum. Many of our students started the year through the generosity of alumni and friends who have provided funds for student scholarships. Our outstanding academic programs are enhanced through lectures, travel opportunities, and research experiences funded by private support. Our ability to retain the exceptional faculty members who teach in our classrooms is only possible with funding beyond what the state provides.

The UNI campus would be a very different place without the support of alumni and friends like you who choose to give generously and make an impact on our students, programs, and faculty. Consider the journey and success that has occurred in your life since your time at UNI.

Today we are preparing another group of students to take a similar path. Please consider some of the following ways in which you might give back and help our students be successful now and in the future.

Support the CSBS Dean's Fund for Excellence. This fund provides direct support to students and faculty in a variety of ways each year, including student research, educational technology, study abroad, and public service programs.

Give to the UNI annual fund. With an annual fund gift of \$1,000 or more, you will become a member of the Campanile Society and will join others who are committed to the long-term growth and mission of UNI. The annual fund is critical in providing funds to the university that can be used immediately where they are needed most.

Endow a scholarship. State support for UNI has declined to less than 50 percent of our budget, and our students have experienced significant tuition hikes since 2000. Endowed scholarships create a permanent fund that provides vital financial support for our students and help give UNI an advantage when recruiting students.

Join UNI's Old Central Associates by creating a legacy for the future with a planned gift. By including UNI in your estate planning, or making a planned gift now, you can help students and programs in a way you never thought possible.

Thank you for your support and your loyalty to UNI. Please feel free to contact me at (800)782-952, (319)273-5468, or john.aronowitz@uni.edu.

Donor Spotlight: Tim Hilby

Tim Hilby (History '98) believes that his experience as a history student at UNI not only gave him a great education, it allowed him to become a better citizen and gain a greater understanding of the world.

Tim had several professors at UNI who made a positive impact on him. "Don Shepardson was very interesting in his teaching and knowledge of European diplomacy, and he was very approachable. I also learned a lot from my classes with John Johnson and Konrad Sadkowski."

Tim wanted to help students who had a similar interest in history and decided to establish an annual scholarship. He also took advantage of a donation match offered by his employer, John Deere, to increase the amount of his gift. In addition, Tim has made a gift in his estate plan that will provide support for the Department of History. "Giving back is something that I feel privileged to do. It really makes me feel good to be able to help and is my way of saying thanks."

Tim continues to stay involved on campus by attending events as well as using the Rod Library and Wellness and Recreation Center as a member of the Alumni Association. He is also continuing his passion for learning by pursuing a second bachelor's degree in industrial technology at UNI. "UNI has certainly had a positive impact on my life, and I have always appreciated the opportunity to learn."

There are a variety of ways that you can give to the College of Social and Behavioral Sciences that will make an impact on our students, faculty, and programs. If you have questions about supporting the college, please contact John Aronowitz, director of development, at (319) 273-5468 or john.aronowitz@uni.edu.



The Gift of a Lifetime

There are many ways in which private support helps continue UNI's tradition of providing excellent teaching, individual opportunities for students, and an enriched campus community.

Dr. Everett Alderman died in 1997, leaving the College an estate gift worth \$3.6 million. Though Alderman never attended UNI, he made his bequest in memory of his parents, early 20th-century graduates of Iowa State Normal School, and his wife. Alderman's criterion was that the money support scholarships for "needy, worthy, and appreciative" students—those who may not have otherwise been able to attend college, those who have faced challenges in life, and those who generally show the promise of producing a good return on the investment represented by the award.

The Everett Alderman Endowment Fund remains one of the largest private gifts to the university and allows CSBS to offer one of the largest collegiate scholarships on campus. The Alderman Scholars Program supports scholarships of \$6,000 per year for approximately 10 new students annually and upwards of 40 total students each year.

Having just entered its second decade, the program has helped nearly 150 CSBS students attend UNI. Dr. Alderman's gift continues to support students he never met at an institution he never attended. Imagine the impact your gift could have on the students of tomorrow.

For more information on giving, visit www.uni-foundation.org.




Imagine the
IMPACT
The Campaign for the University of Northern Iowa

Dorothy Jean Ray had a passion for understanding the world around us. She died in 2007.
This year she helped a student understand native groups in North America.

Your thoughtful estate planning can create a promising future for UNI students. A bequest to the University of Northern Iowa impacts students and may provide you with many benefits, including:

- Your assets remain in your control during your lifetime
- You can direct your bequest to a particular purpose, program, school or college
- You can modify your bequest at anytime

Endow your passion. Contact John Aronowitz, director of development, College of Social & Behavioral Sciences, 319-273-6078
Or visit UNI's Planned Giving Web site: www.unicompass.com.

CSBS Alumni Updates

1950s

Darwyn H. Lumley (Social Science '57) is retired and lives in California. He was elected president of the Society of Automotive Historians, an affiliate of the American Historical Association, in October 2007.

Gerald W. Thompson (Social Science BA '58, MA '62) is a dealer of Oriental rugs in West Virginia, specializing in semi-antique and antique carpets. He frequently lectures at The Textile Museum in Washington, DC, and has had many carpets featured in books and museums.

Richard B. Faber (Social Studies MA '59) is a former teacher, government official, and Air Force officer. Now retired and living in Des Moines, he has authored a new book on the domestic programs of the American presidents.

1960s

Raymond Bachman (Social Science BA '62, MA '68) is retired after 37 years of teaching in Postville and Clinton, Iowa, and Beloit, Wisc. He continues to live in Beloit and enjoys reading, biking, walking, and old-time radio programs.

Margaret Hoppes Melick (Social Studies '66) is retired but works part-time in customer relations for her family business in Menomonie, Wisc., that specializes in energy-efficient lighting. She also enjoys being a grandmother.

Lois (Jordan) Knoke (Home Ec '67) is semi-retired in Huron, S.D. She enjoys reading, walking, and volunteering for various organizations, particularly the state's Mental Health Planning and Coordination Advisory Council and NAMI.

1970s

Karl Anderson (History '75) is a production control supervisor with John Deere Des Moines Works. He enjoys biking trails in Iowa and surrounding states and would like to start traveling more.

Duane E Hoffmeyer (Political Science '79) is chief judge of Iowa's Third Judicial District in northwest Iowa. Prior to being appointed to the bench, he was involved in private practice for over 18 years. He is married with two children.

1980s

Steve Brown (Psychology '80) earned an EdS from the University of Georgia and is now a high school counselor with the Newton County, Georgia, school system. He and wife Cathy were married in 2001, giving him two stepchildren.

Peter Fagen (Political Science '83) is an attorney and partner with Fagen Friedman & Fulfrost, a California firm that specializes in public education law.

John Cacciatore (Political Science '84) is a government affairs and public affairs consultant for PolicyWorks after 16 years in state government—8 years in the Iowa Senate and 8 years with Gov. Vilsack. He and wife Robin live in Des Moines with their puppy, Abbie.

Carole (Griffin) Gustafson (Social Work '86, Family Studies MA '92, MSW '06) is a social worker with the Waterloo schools. She founded El Centro Latino-Americano Resource Center, an advocate for immigrant and refugee populations in the Cedar Valley, in 2001.

1990s

Steve Warren (Political Science '92) has worked in emergency services for 10 years as a firefighter and paramedic, and he is also an EMS educator at Blank Children's Hospital. He and his wife are the parents of twins, Matthew and Amanda.

Judith (Condon) Wightman (Psychology '95) earned her MA in I/O Psychology from the Univ. of Nebraska and is an instructor at Kirkwood Community College. She and husband Mick ('92) have a son (Sept. 2004).

Andrew Menken (Social Work '99) is a juvenile court officer with the State of Iowa in Carroll County, having previously spent seven years as the Waverly-Shell Rock school liaison officer. He and wife Rachel ('02) have twins.

2000s

Donna (McDermott) Brumm (Interior Design '00) works in residential design in Rochester, Minn. She is a member of the American Society of Interior Designers and is a certified kitchen designer.

Rebel Saffold III (Political Science '00) and **Sarah (Bjorklund) Saffold** (Social Work '03) live in St. Louis. Rebel is a development database administrator with MICDS, a preparatory school. Sarah worked at the Missouri Alliance for Children and Families until the birth of their daughter (Aug. 2007).

Joshua J. Walsh (Social Science '01) is an attorney with Gailey and Walsh Law Office in Newell and became a Buena Vista magistrate in 2007. He and wife Cynthia (Eldred, '02) have two children.

Lisa Groth (Interior Design '03) is an interior design manager with The Melting Pot Restaurants, where she is responsible for the interior design of restaurants nationwide. She and Curt Switzer ('03) married in July 2008.

Kathryn (Katie) Hansen (Textiles and Apparel '03) is involved in development with Mercy High School in Omaha.

continued on page 20



Bernard Brommel (Social Science, Speech '51) was raised near St. Marys, Iowa, one of nine children in a family with a long tradition of farming. In an era when many young men abandoned school for the the farm—and from a family with little interest in higher education—he may never have considered college were it not for the teacher he first befriended in seventh grade. Miss Grace Laird, a 1920 graduate of Iowa State Teachers College, was his mentor throughout middle and high

school, and it was she who encouraged his interest in learning and education. Brommel was completely responsible for the cost of his education and relied on scholarships and part-time jobs. Only Miss Laird wrote to him at college. She offered both support and criticism, returning to him with corrections the letters he had sent her. After earning his degrees, he spent eight years teaching high school in Iowa and began his family, which would grow to six children. Brommel also continued his own education. Through Saturday classes, night classes, and 11 consecutive years of summer school, he would earn four more degrees. In 1963, he completed his doctorate in communication and eventually settled at Northeastern Illinois, where he taught for 28 years.

Although he formally retired from teaching in 1999, Brommel continues to lecture, author books, and counsel families in private practice. He remains close with many of the students he has mentored, who recall his reputation as a “hard-nose” and for rationing high marks. Brommel admits he was tough but says, “I learned high standards at Teachers College,”

His fondest memories of campus are participating in theater, which cultivated his love of the arts, and the friends he made. He recalls with great esteem many of the old instructors. But his greatest mentor here was Erma Plaehn, about whom he speaks with almost as much affection as his “beloved Miss Laird.” In Miss Laird's memory, Brommel established an endowed scholarship at UNI for students from his old high school. He also serves on the UNI Alumni Association board of directors and is a friend UNI in many other ways. He acclaims the culture of giving here and has used that model to extend his philanthropy to all the schools at which he has learned and taught.

Though he has many degrees from several fine institutions, Dr. Brommel credits UNI for providing him a solid education and a strong foundation for his lifetime of learning. This summer, he took a course in order to learn Spanish. He thought that in today's climate it might be of better use to him than his command of German and French. Miss Laird would be very proud indeed.



Dr. Erma Plaehn taught at UNI for 37 years and was the first head of the Dept. of Political Science.



In Memoriam

This fall the Department of History and the College lost a distinguished alumnus and good friend.

Ray Smalling Johnston, West Virginia real-estate developer and community leader, former high school social studies teacher and Minnesota state legislator, and a B.A. ('59) and M.A. ('64) graduate of the UNI history department, died on November 14, 2008, after an extended illness. He was 74 years of age.

Ray is survived by his wife of 51 years, Madeline V. Johnston; daughters Joy and Sally and their husbands; and five grandchildren. Ray and Madeline recently provided a gift to UNI to fund a graduate assistantship in history. While running his successful business, The Woods Resort in Hedgsville, West Virginia, Ray found the time to indulge passions in local history, archaeology, geology, travel, political commentary, and golf. He will be missed.

Alumni updates *continued from page 18*

Kathy (Harder) Moore (Social Work '03) is a caseworker with Gift of Love International Adoptions and a full-time mom. She and husband Josh have a son (2007).

Holly (Jansen) Lester (Social Work '03) married Brandon in 2004 and welcomed their first son in March 2008. She is currently working for the Jasper County office of Central Iowa Aging Resources.

Amber (Hines) Lonsdale (Family Services '04) earned a master's degree from ISU and is a therapist with Jackson Recovery Center in Sioux City. She married Damian in Oct. 2007.

Cari Dufel (Social Work '05) earned her master's degree from the University of Chicago in 2007 and is a therapist/LGBT project manager with South Suburban Family Shelter in Homewood, Illinois.

Christina R. Karlowski-Tyler (Social Work '06, MSW '07) is a multiple sclerosis unit care manager with Independence Care System in New York City. She has also been working toward a PhD in clinical psychology.

Jennifer Ostwinkle (History MA '08) was accepted into the PhD program in history at Harvard University, the first MA in history from UNI to be so honored.

Please complete and submit the form on the facing page if you would like to be included in next year's edition of CSBS Statements.

As this is an annual publication, information in the Alumni Updates may have been submitted up to a year ago. Try as we might to be accurate, we apologize if any information is incorrect or outdated.

Alumni Updates

We'd like to include you in next year's edition!

Name _____

Address _____

Phone # _____ E-mail _____

Year of Graduation _____ Degree/Major _____

Occupation _____

Current Employer _____

Items you'd like to share about yourself in next year's edition:

Return to: CSBS Statements, College of Social & Behavioral Sciences, University of Northern Iowa, Cedar Falls, Iowa 50614-0403. Information can also be e-mailed to holly.bokelman@uni.edu, or you can write us a longer letter. We love hearing from our alumni and our friends!

Stay United with UNI

CSBS alumni live all over the globe, but the Alumni Association offers many opportunities to stay involved with the university no matter where you live. Below are just a few of the association's programs. All alumni can participate, regardless of whether you're a member of the Alumni Association.

Panther Volunteer Network Share your UNI experience with a current or prospective student, become a mentor or advisor, or help out with alumni or recruiting events. You can choose your level of involvement, and opportunities are available across the state and nationwide.

Alumni Travel Program Meet other alumni and share memories of campus while you travel the world in and style. Destinations for 2009 include Italy, Ireland, India, and Beijing.

Career Services There is always a demand for quality internships for UNI students. UNI seeks alumni who are interested in mentoring students making career decisions, alumni who are willing to come back to campus and share their experiences with students, and employers who are interested in hiring highly qualified graduates.

Legislative Advocacy UNITE (*UNI Together for Education*) encourages alumni, faculty, staff, students, parents, and friends of the university to participate in grassroots advocacy to ensure that

public higher education in the state of Iowa and UNI remain a top priority. Visit www.unialum.org/unite to learn more about the issues, how to join the effort, and how to get started.

Are you a member of the UNI Alumni Association? For as little as \$35 per year, you can take advantage of many member benefits while supporting the mission and programs of the association and the university. Visit www.unialum.org for more information about levels and benefits of membership.



There's not much difference between how the top floor of Sabin Hall looked in 1986 (*right*) and how it looks today (*below*)—except for the fashion, perhaps.



Generations of students have used Sabin Hall. It served as the campus laboratory school from 1914 until the late 50s when the Price Laboratory School was built. Since then, the building has accommodated classes for business, economics, and the disciplines that are now housed within the College of Social and Behavioral Sciences.

The building also had science laboratories and even a studio theatre until the early 1980s.

Do you have memories of Sabin Hall? Perhaps you did your student teaching when Sabin Hall was the lab school. Perhaps in addition to being a UNI alum you grew up in the area and attended grade school or high school in Sabin. Perhaps you remember something about attending class in the large lecture hall... or even the unique "character" of the restrooms!

If you have any special memories of Sabin Hall, please share them with us. We'll print some of them in next year's edition while we're under construction. And please come visit the new building when it's finished.

WE'VE MOVED!

Sabin Hall is now closed for renovation until fall 2010. CSBS offices and departments have relocated to other buildings on campus .

Our telephone numbers and campus ZIP codes will remain the same, but you'll have to find us if you want to visit!



Office of the Dean:

59 Baker Hall

Political Science:

5 Curris Business Building

Social Work:

214 East Bartlett Hall

Center for Social and Behavioral Research (CSBR):

Center for Educational Technology

Help us conserve resources.

Visit www.uni.edu/csbs/newsletter to read the current and past issues of our newsletter and to sign up to receive your newsletter via email.



College of Social and Behavioral Sciences
Cedar Falls, Iowa
50614-0403

Non-Profit
Organization
U.S. Postage
PAID
UNI